

V&V Reference Report

L2 ASCDS Version : 7.6.7.2

Observation 4509 - L2 Version 001
Chandra X-Ray Center

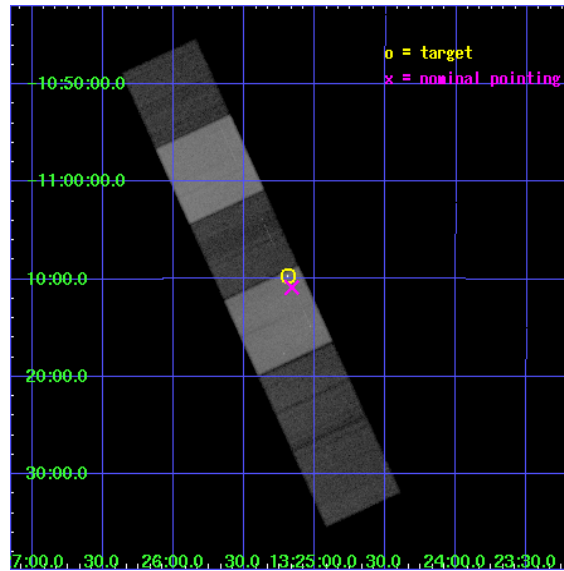
L2 Processing Date : May 31 2006

Contents

1	Front	2
2	OBI	3
2.1	OBI	3
2.1.1	Images	3
2.1.2	Bias	3
2.1.3	Parameters	4
2.1.4	Events	4
2.2	Compared Parameters	5
2.3	Aspect	6
2.4	Star Slots	9
2.4.1	Slot 3	9
2.4.2	Slot 4	10
2.4.3	Slot 5	11
2.4.4	Slot 6	12
2.4.5	Slot 7	13
2.5	FID Slots	14
2.5.1	Slot 0	14
2.5.2	Slot 1	15
2.5.3	Slot 2	16
3	Gratings	17
3.1	LETG Arm	17
A	Summary	19
A.1	Status	19
A.2	Comments	19

1 Front

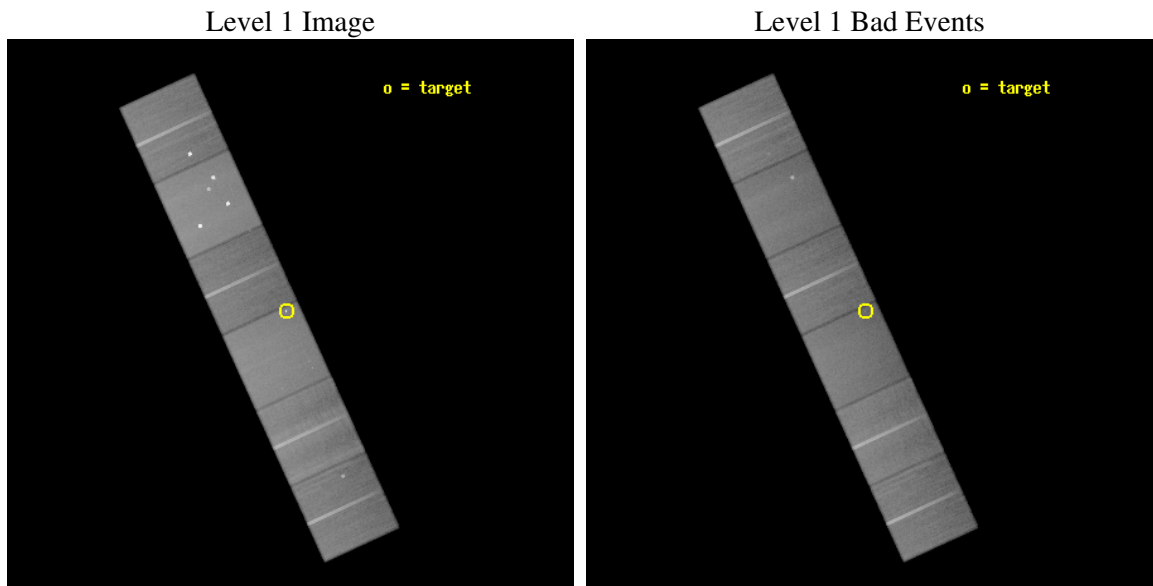
seq_num	200278
obs_id	4509
title	Using LETG Spectra to Probe Anomalous Heating in the Upper Atmospheres of B Stars
observer	Dr. Joseph Cassinelli
object	Spica (Alpha Vir)
dtcycle	0
cycle	P
ra_targ	201.298333
dec_targ	-11.161306
ra_nom	201.29089652129
dec_nom	-11.181065295827
roll_nom	65.349435667534
revision	2
ontime	90182.358673781
livetime	89040.415346957
ontime4	90185.599664032
ontime5	90182.358673781
ontime6	90185.599664032
ontime7	90182.358673781
ontime8	90185.599664032
ontime9	90185.599664032
l2events	929738



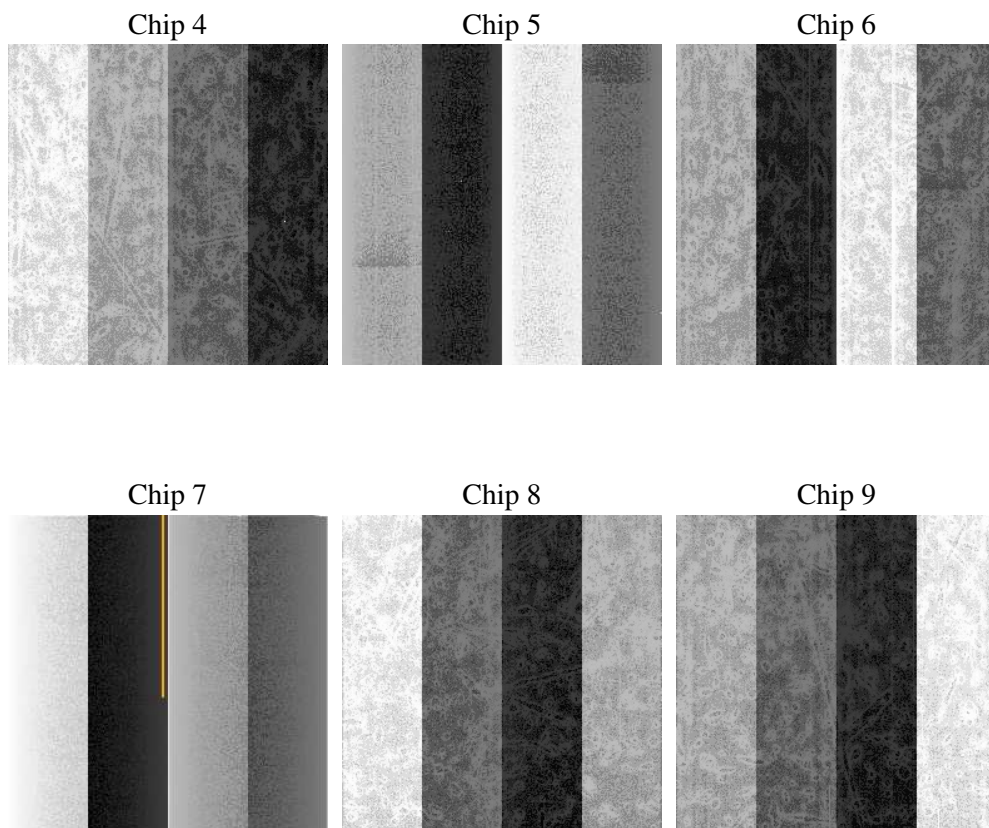
2 OBI

2.1 OBI

2.1.1 Images



2.1.2 Bias



2.1.3 Parameters

obi_num	0
ascdsver	7.6.7.2
caldsver	3.2.2
date	2006-05-31T17:04:38
revision	2

sched_exp_time	90000.000000
ontime	91594.231027395
ontime4	91484.03561762
ontime5	91594.231027395
ontime6	91490.517697632
ontime7	91594.231027395
ontime8	91493.758737624
ontime9	91490.517697632
l1events	4538209

2.1.4 Events

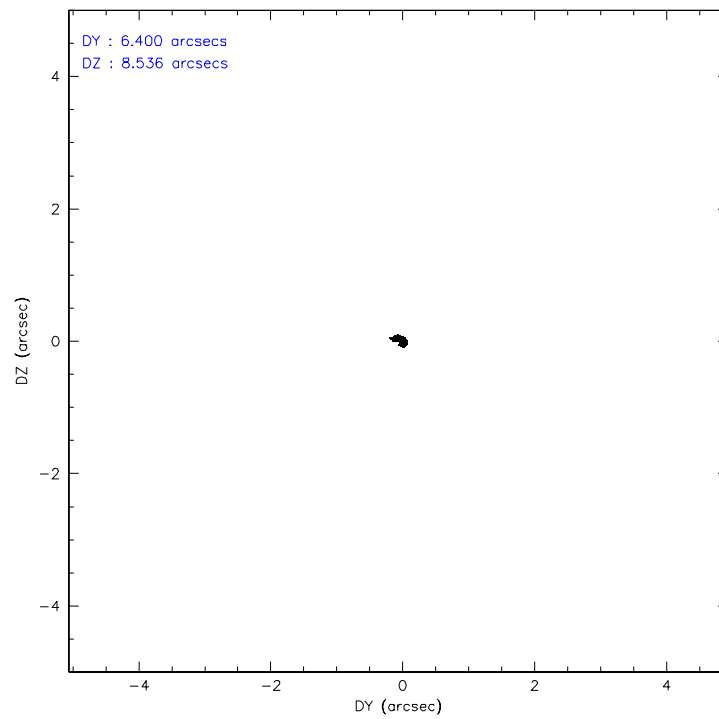
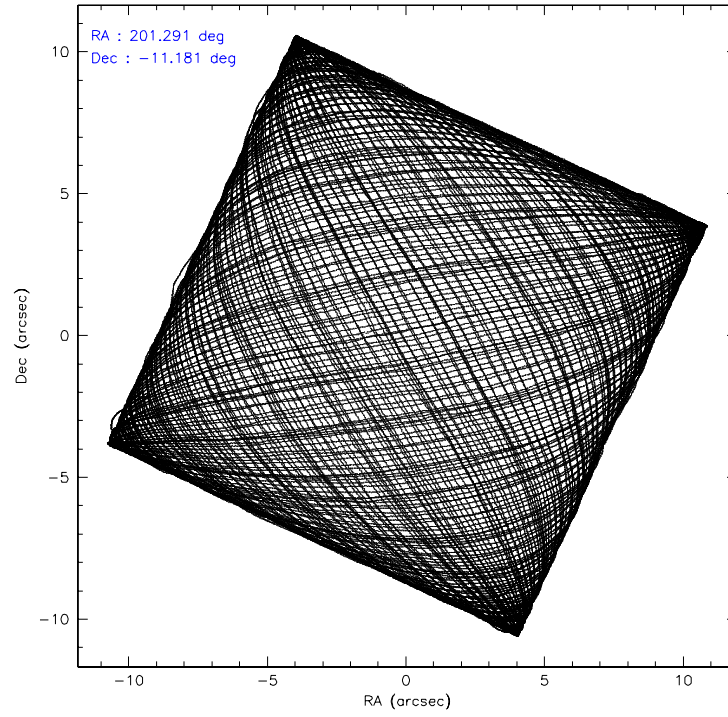
	ccd 4	ccd 5	ccd 6	ccd 7	ccd 8	ccd 9
level 1 events	709181	973297	613444	837048	783898	621341
rejected events	612955	526884	543154	524325	624898	545987
rejected %	86%	54%	88%	62%	79%	87%

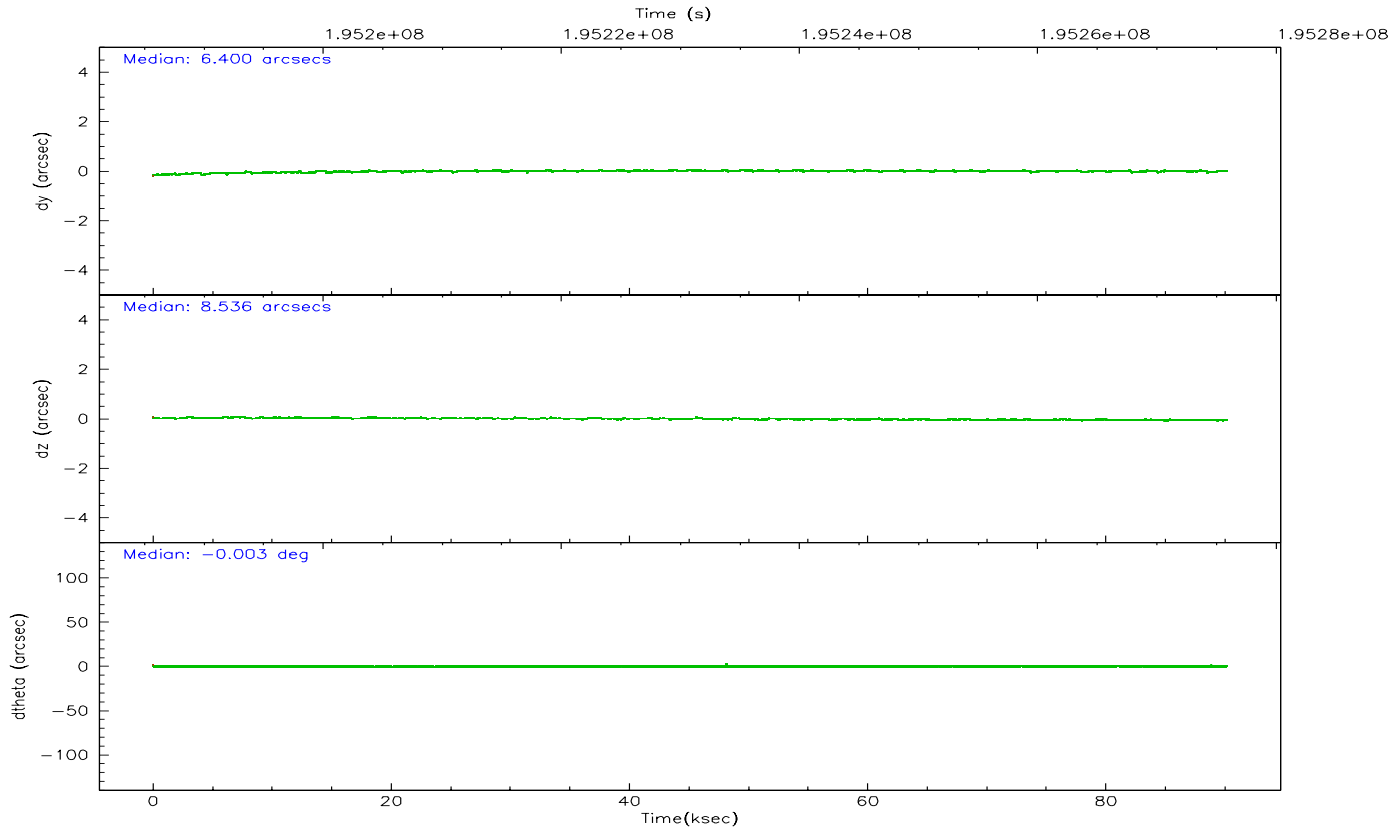
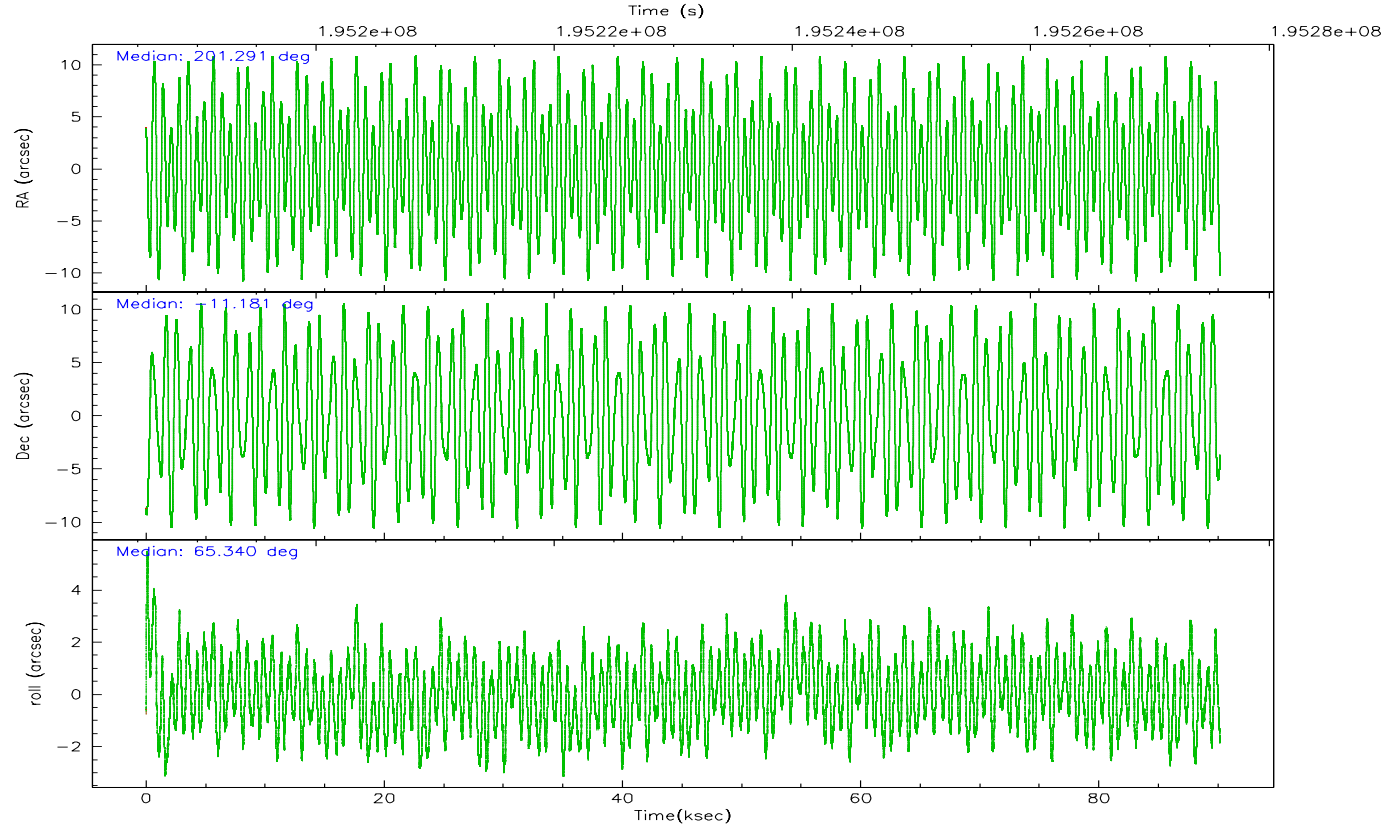
	ccd 4	ccd 5	ccd 6	ccd 7	ccd 8	ccd 9
grade 0 events	54667	75472	27426	19352	49702	32526
	7%	7%	4%	2%	6%	5%
grade 1 events	701	816	277	506	499	336
	0%	0%	0%	0%	0%	0%
grade 2 events	15536	129789	15097	77974	35878	14629
	2%	13%	2%	9%	4%	2%
grade 3 events	7832	8555	7157	15322	16889	7556
	1%	0%	1%	1%	2%	1%
grade 4 events	7491	8394	7046	15021	15975	7178
	1%	0%	1%	1%	2%	1%
grade 5 events	27653	44376	28753	54356	37746	30375
	3%	4%	4%	6%	4%	4%
grade 6 events	12090	231142	14607	189862	42705	14702
	1%	23%	2%	22%	5%	2%
grade 7 events	583211	474753	513081	464655	584504	514039
	82%	48%	83%	55%	74%	82%

2.2 Compared Parameters

Parameter	Planned	Actual	Parameter	Planned	Actual
Instrument	ACIS	ACIS	Obspar format version number	6	6
Detector	ACIS-456789	ACIS-456789	Obspar file type	PREDICTED	ACTUAL
Grating	LETG	LETG	Obspar update status	NONE	UPDATED
Data mode	FAINT	FAINT	On-chip summing requested	N	N
Observation mode	POINTING	POINTING	Subarray requested	NONE	NONE
Pointing RA	201.293863	201.2908965212925	Alternating exposures requested	N	N
Pointing Dec	-11.208120	-11.18106529582681	Primary exposure time	0.000000	3.2
Pointing Roll	65.193384	65.34943566753407			
SIM focus pos (mm)	-0.684267	-0.6828225247311905			
SIM defocus (mm)	0	0.001444936568705701			
SIM translation stage pos (mm)	-182.132523	-182.1370004450064			
SIM translation stage offset (mm)	-8	-7.995522138001405			
Observation start time	195185906.184000	195184127.19242			
Observation start date	2004-03-09T02:17:22	2004-03-09T01:48:47			
Observation end time	195275906.184000	195276767.20898			
Observation end date	2004-03-10T03:17:22	2004-03-10T03:32:47			
Read mode	TIMED	TIMED			

2.3 Aspect



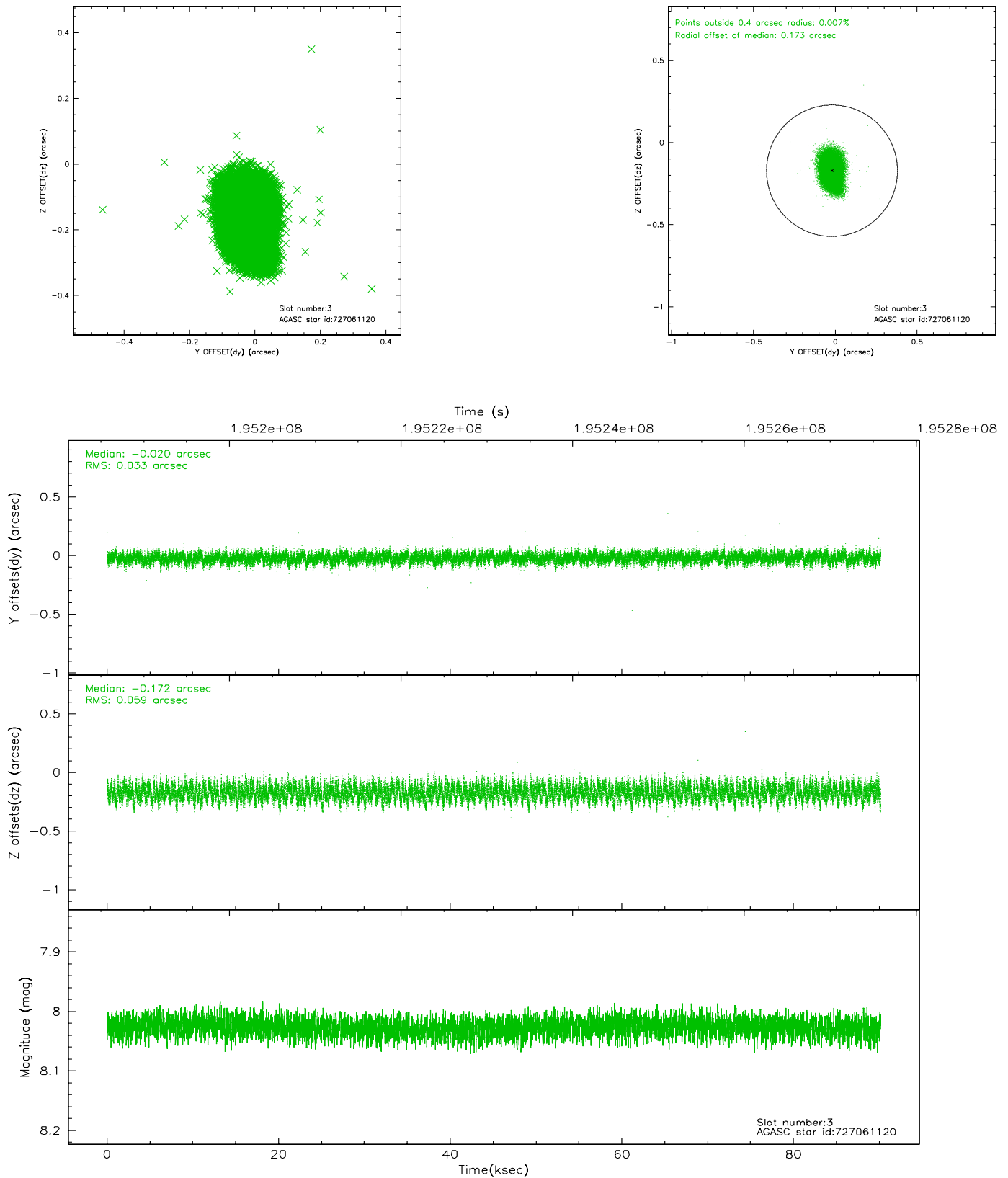


Slot Statistics

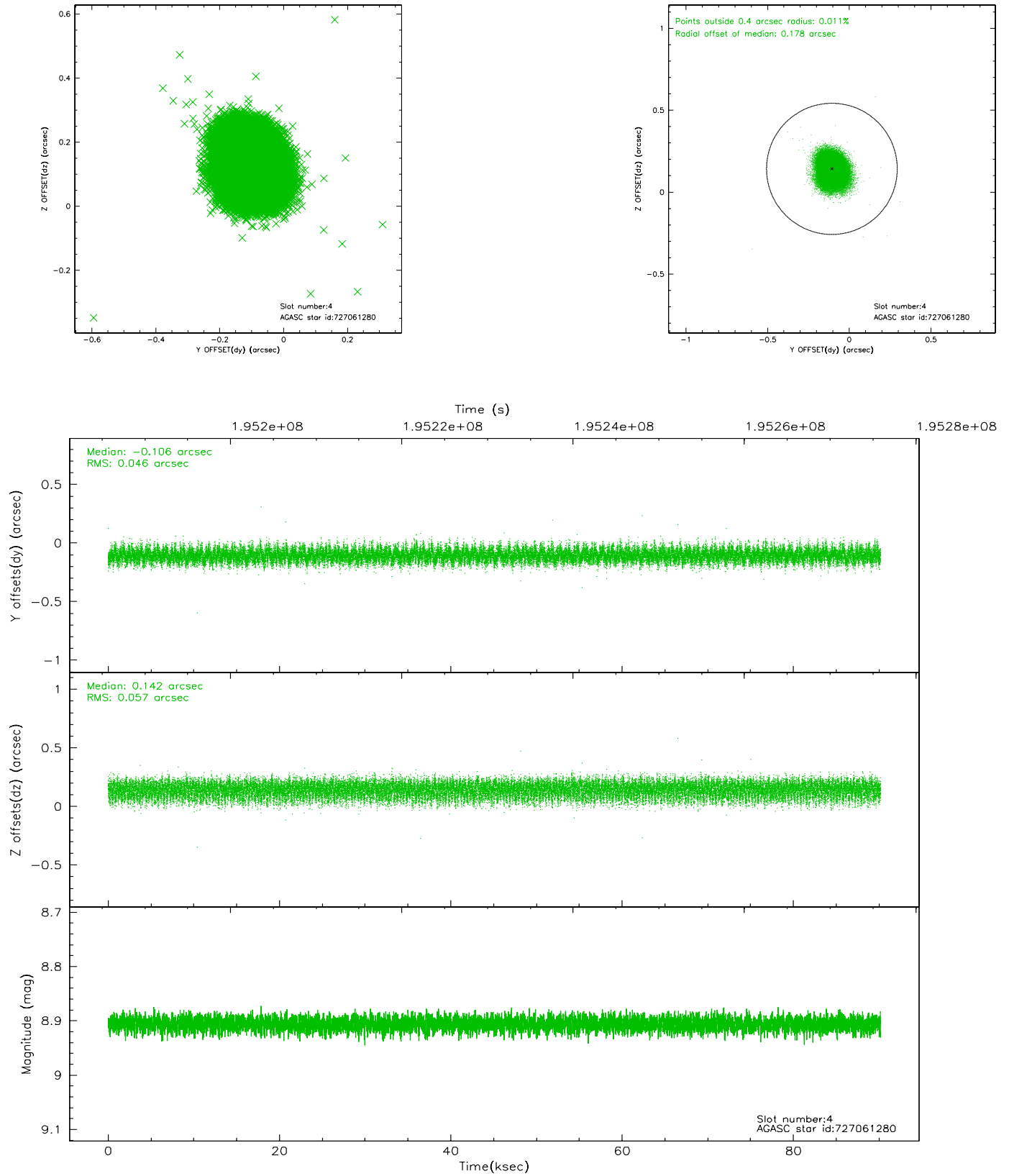
slot	status	id	mag	n_pts	med_dy	med_dz	dr1	dr2	ra	dec	mean_y	mean_z
0	FID	ACIS-S-2	7.09	21996	-0.059	-0.120	0.007	0.011	0.000000	0.000000	-758.65	-1894.56
1	FID	ACIS-S-4	7.18	21997	0.096	0.060	0.005	0.009	0.000000	0.000000	2154.86	14.11
2	FID	ACIS-S-5	7.23	21997	-0.069	0.068	0.006	0.010	0.000000	0.000000	-1811.56	7.78
3	GUIDE	727061120	8.03	43984	-0.020	-0.172	0.071	0.119	200.985274	-10.870950	643.39	1499.66
4	GUIDE	727061280	8.91	43970	-0.106	0.142	0.078	0.125	200.827637	-11.041352	-147.50	1747.07
5	GUIDE	727062912	9.57	43786	0.291	-0.196	0.098	0.165	200.598562	-11.533685	-2095.33	1733.08
6	GUIDE	727188072	8.50	43981	-0.133	0.226	0.073	0.117	202.075542	-11.046389	1684.46	-2263.60
7	GUIDE	727190192	9.49	43958	-0.029	0.007	0.098	0.164	202.111220	-10.929878	2118.49	-2203.44

2.4 Star Slots

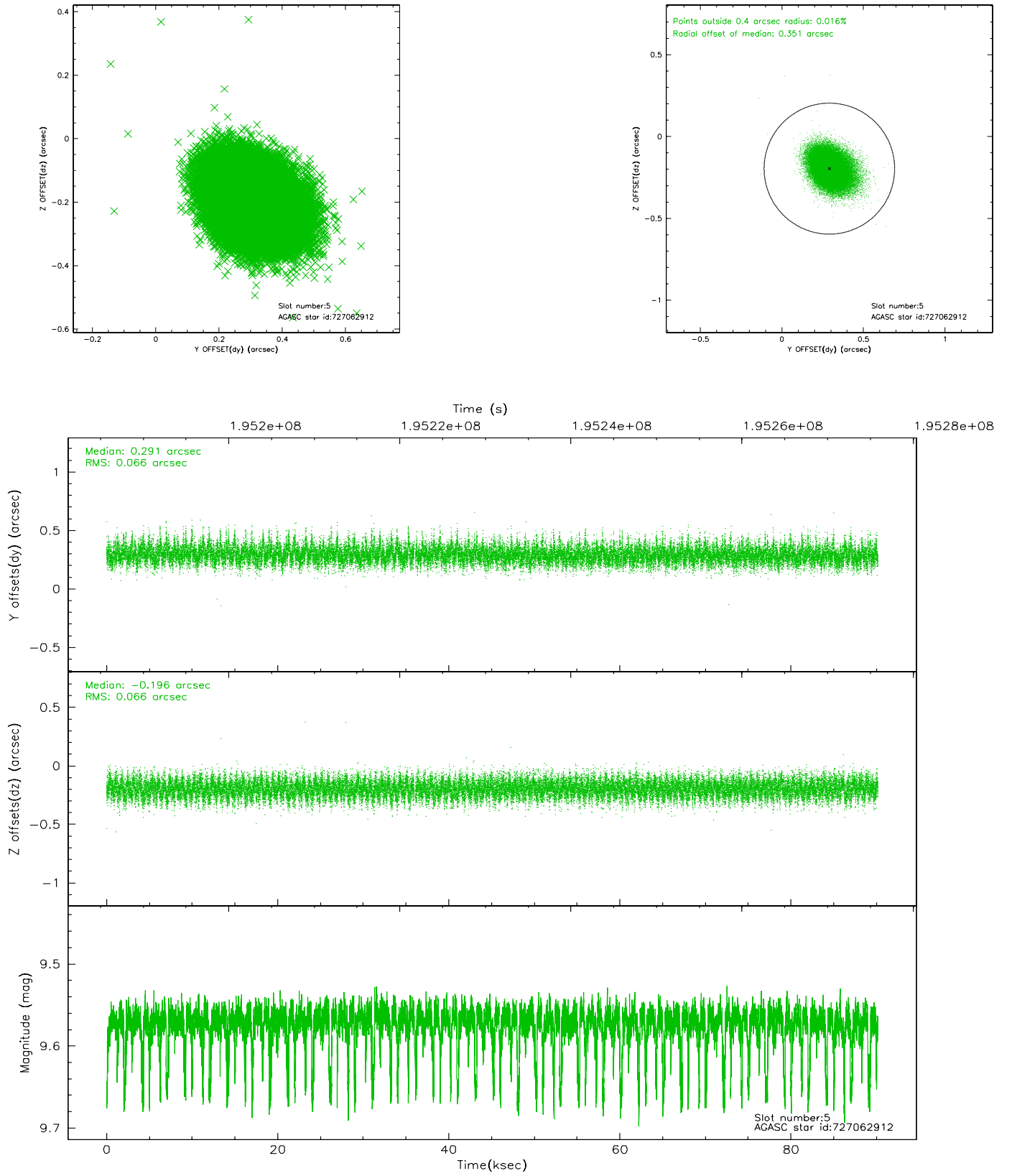
2.4.1 Slot 3



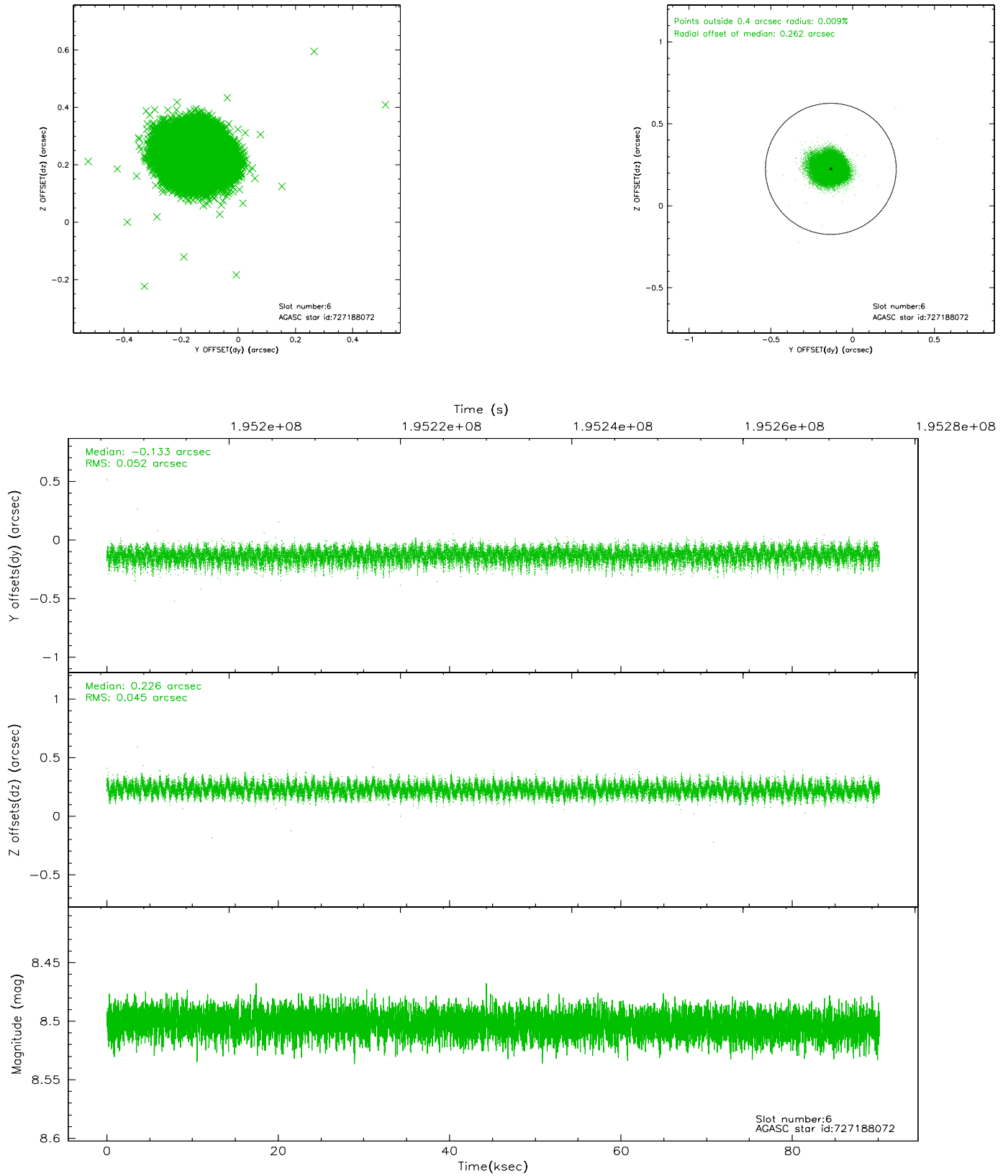
2.4.2 Slot 4



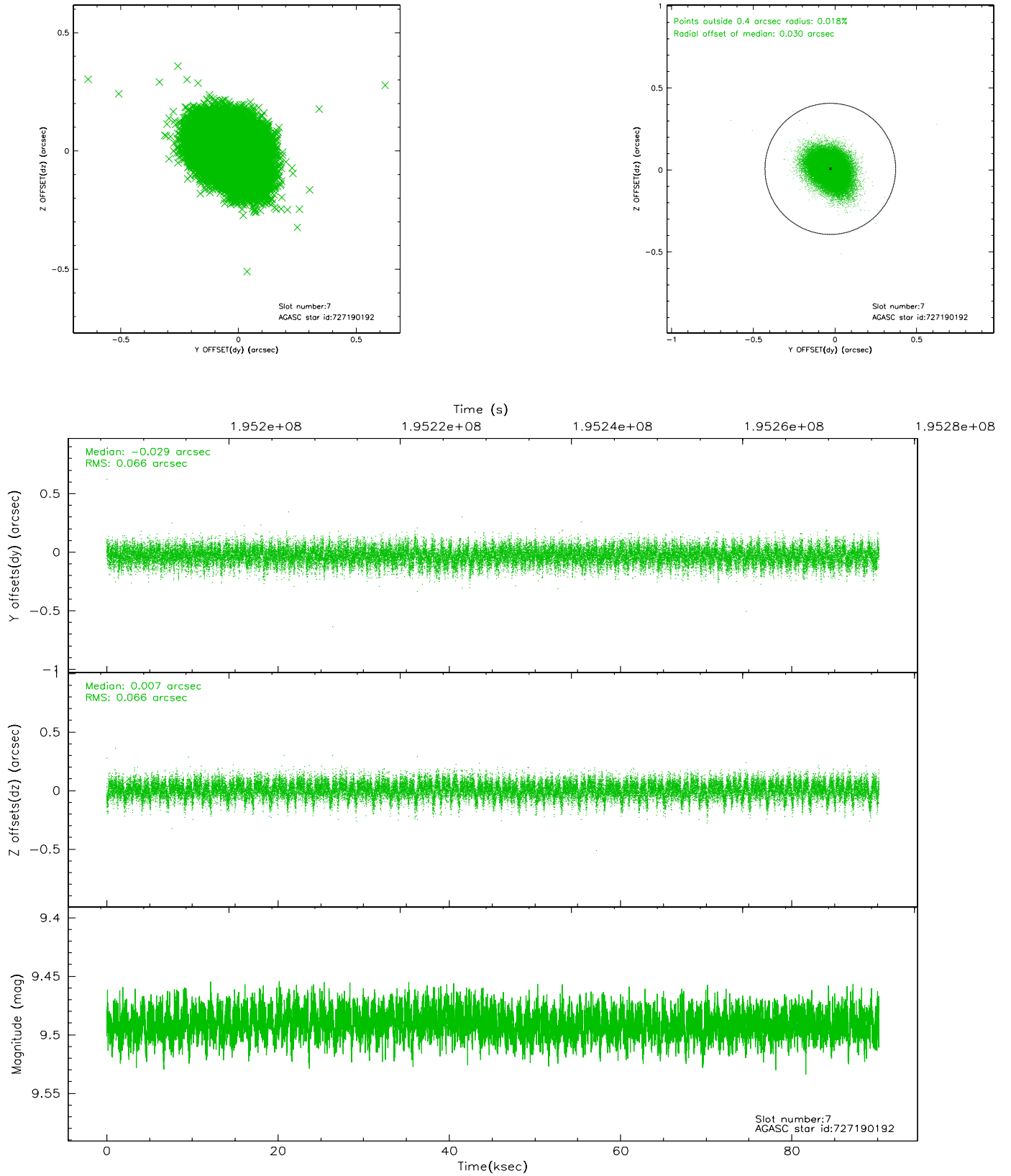
2.4.3 Slot 5



2.4.4 Slot 6

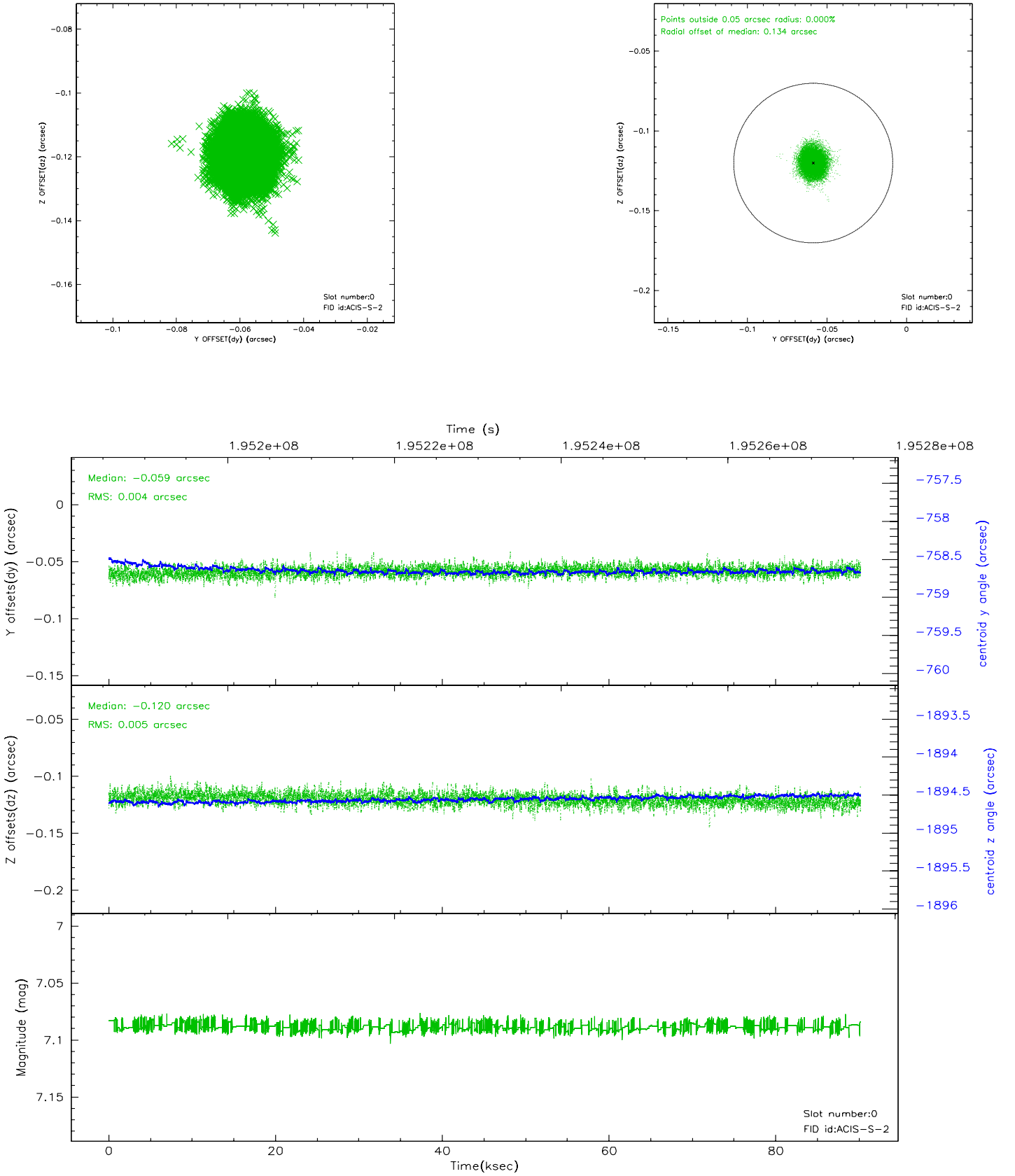


2.4.5 Slot 7

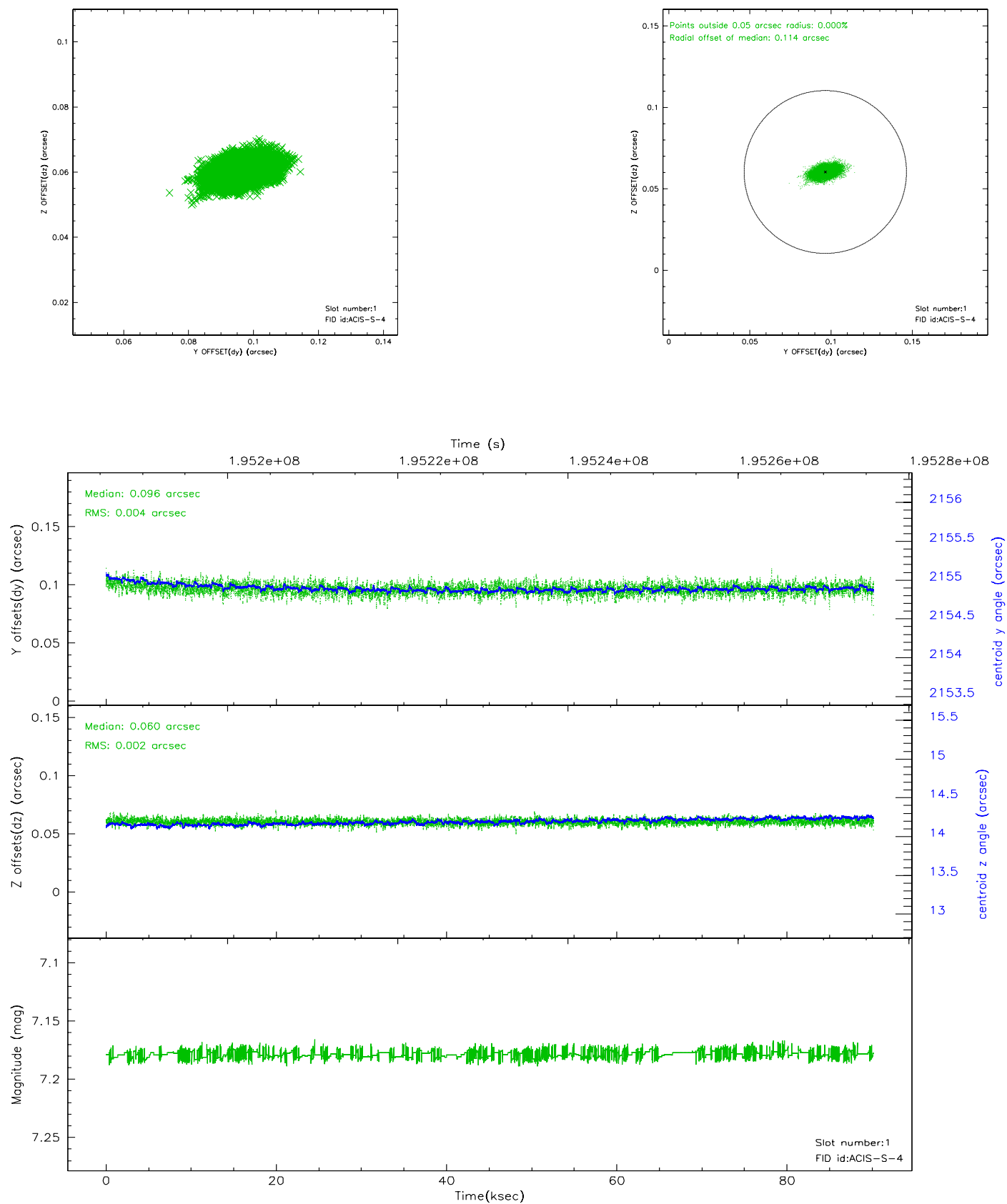


2.5 FID Slots

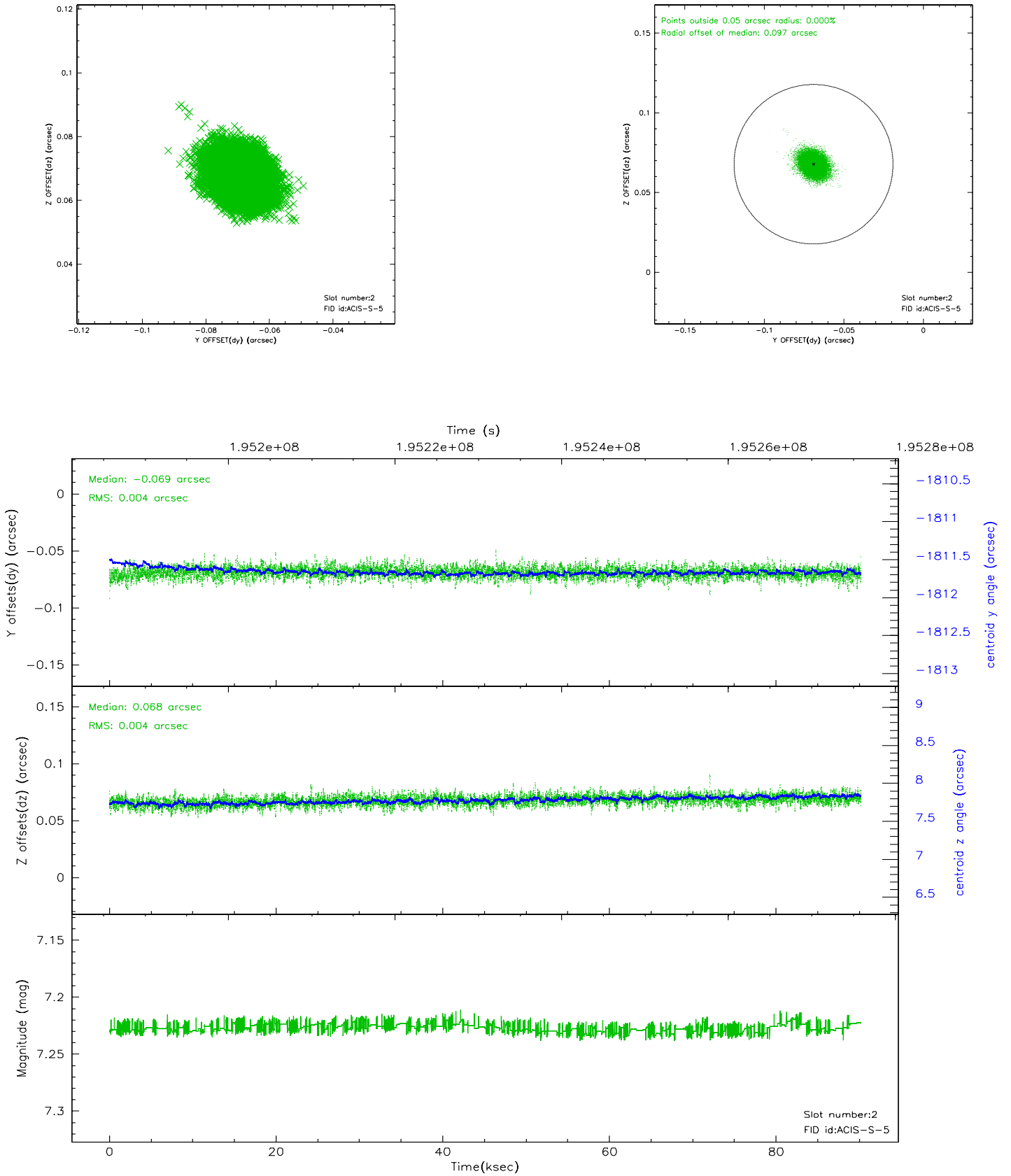
2.5.1 Slot 0



2.5.2 Slot 1

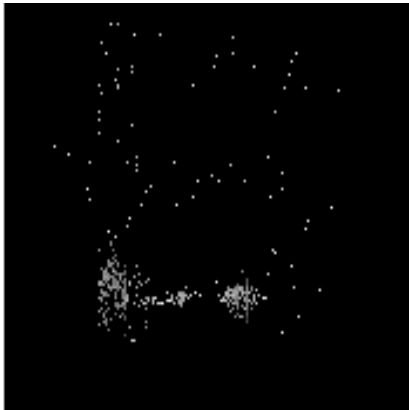


2.5.3 Slot 2

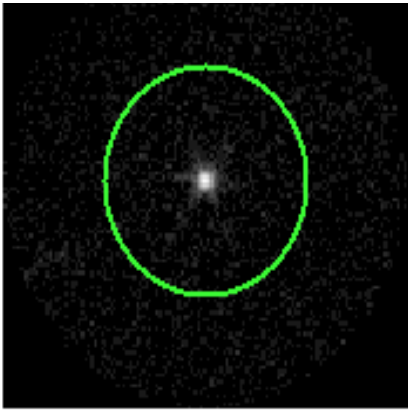


3 Gratings

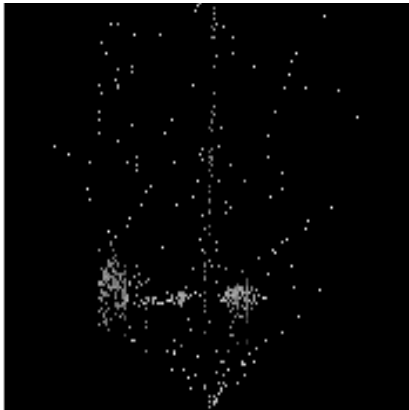
3.1 LETG Arm



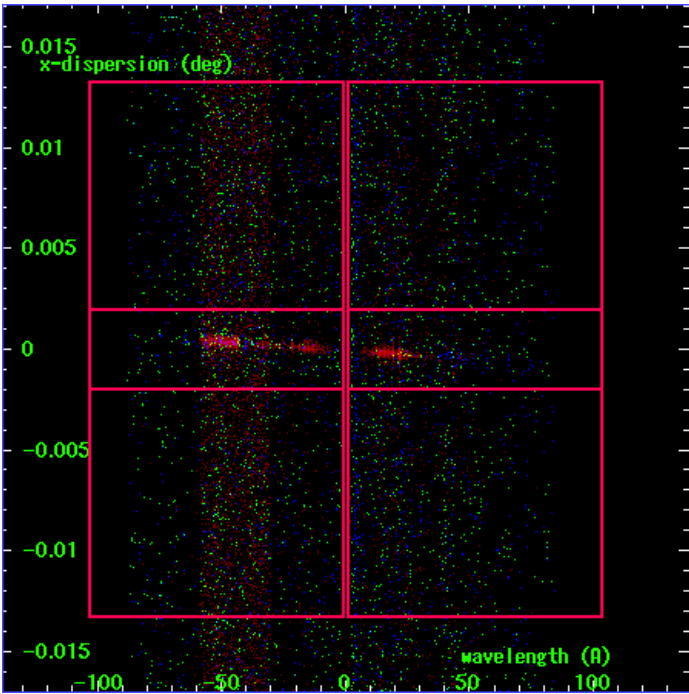
LETG Order Sort 123



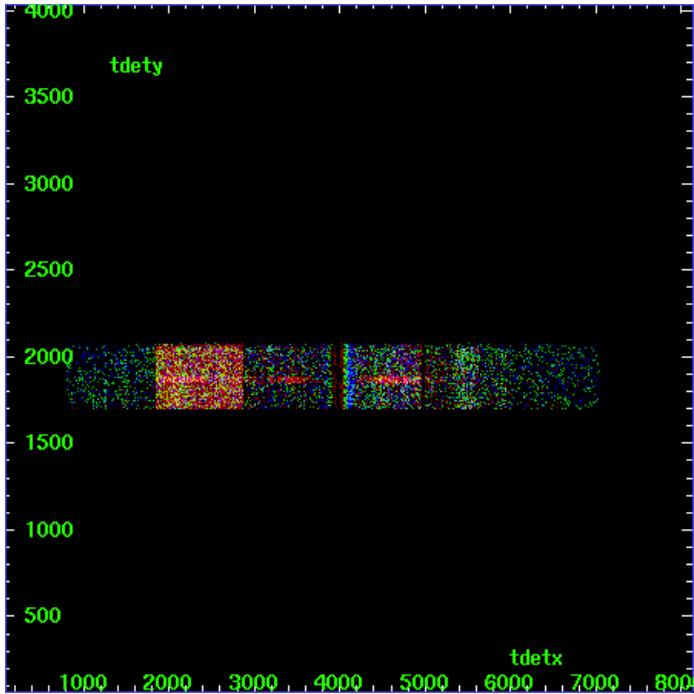
LETG Zero Order



LETG Order Sort ALL

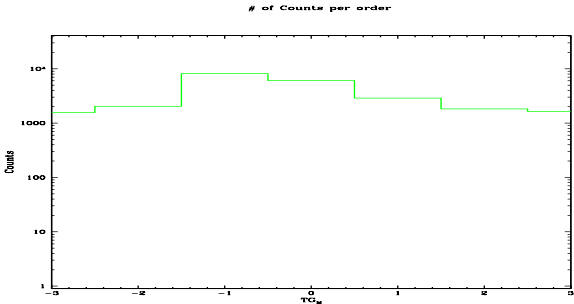


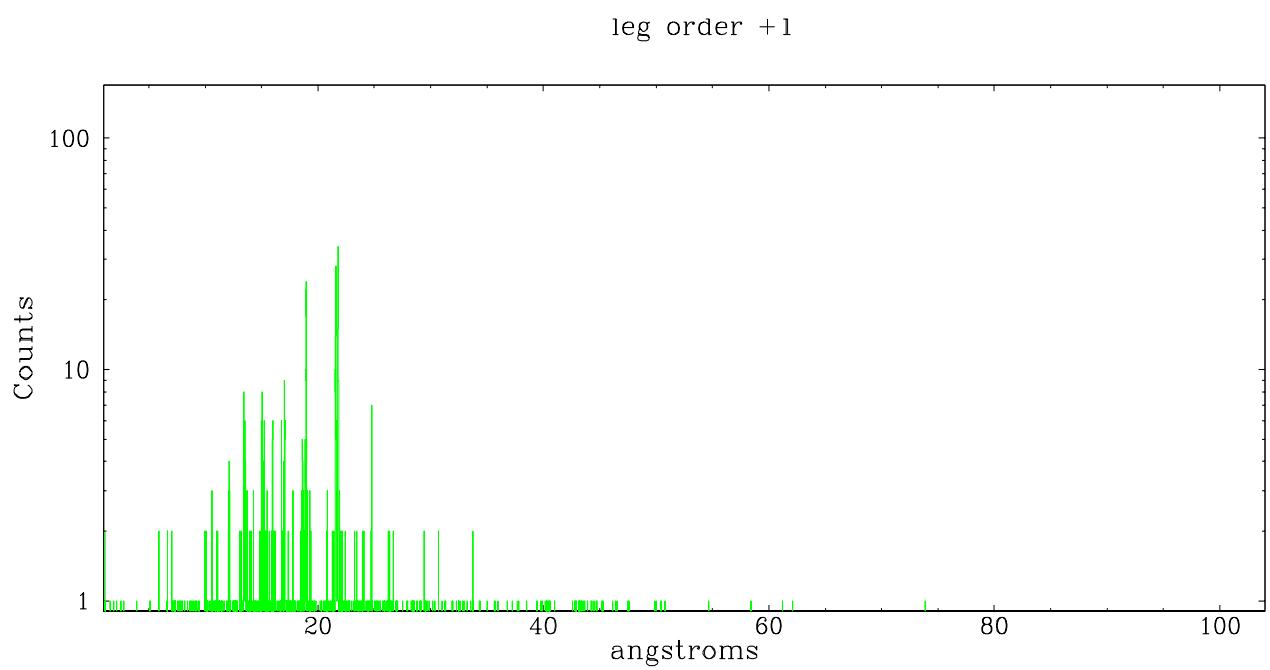
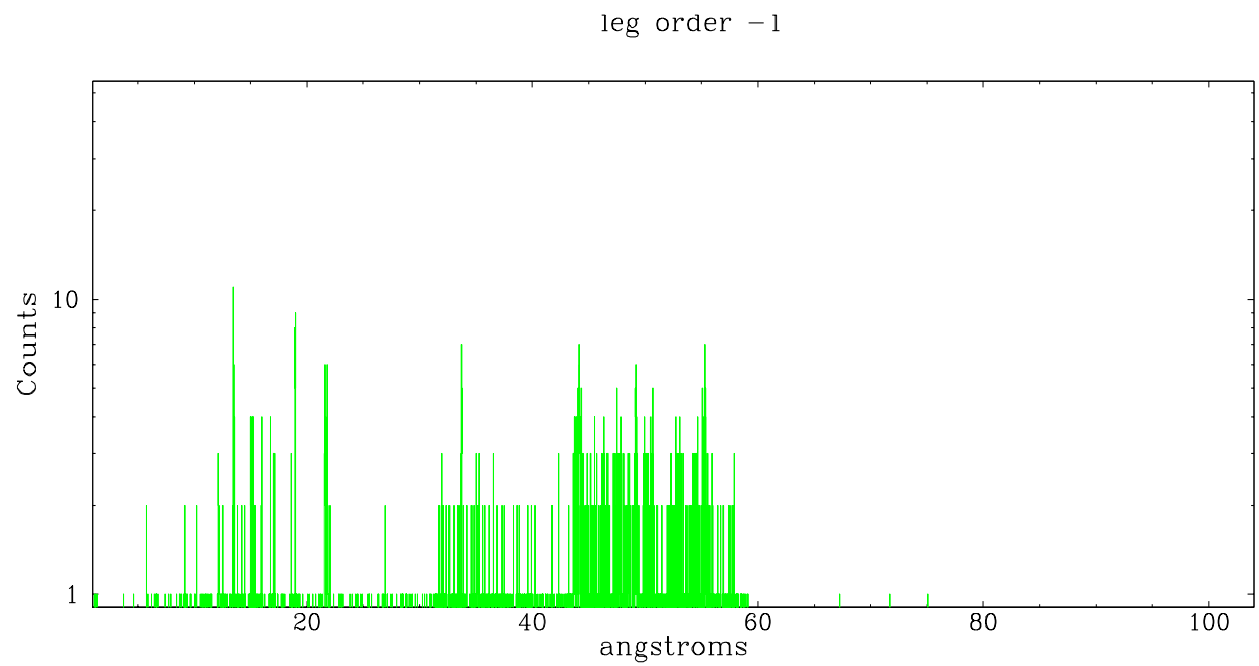
Spot Image LETG



Full Detector LETG

	order -3	order -2	order -1	order 0	order 1	order 2	order 3
Events	1569	2035	8137	6064	2888	1831	1652





A Summary

A.1 Status

V&V Scientist	Jen Lauer
V&V Date (YYYY-MM-DD)	2006.06.01
V&V Edition	1
V&V Disposition and Status	OK
V&V Charge Time	90.182

A.2 Comments

Target is offset to near the edge of chip.