

V&V Reference Report

L2 ASCDS Version : 7.6.8

Observation 4259 - L2 Version 001
Chandra X-Ray Center

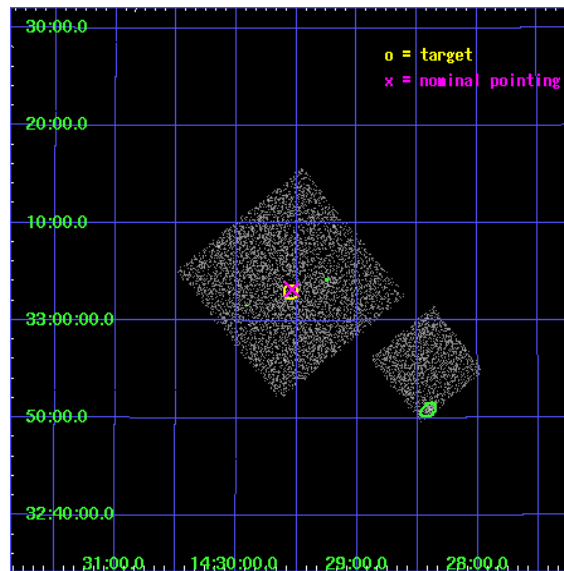
L2 Processing Date : Jul 30 2006

Contents

1	Front	2
2	OBI	3
2.1	OBI	3
2.1.1	Images	3
2.1.2	Bias	3
2.1.3	Parameters	4
2.1.4	Events	4
2.2	Compared Parameters	5
2.3	Aspect	6
2.4	Star Slots	9
2.4.1	Slot 3	9
2.4.2	Slot 4	10
2.4.3	Slot 5	11
2.4.4	Slot 6	12
2.4.5	Slot 7	13
2.5	FID Slots	14
2.5.1	Slot 0	14
2.5.2	Slot 1	15
2.5.3	Slot 2	16
3	Point Sources	17
A	Summary	18
A.1	Status	18
A.2	Comments	18

1 Front

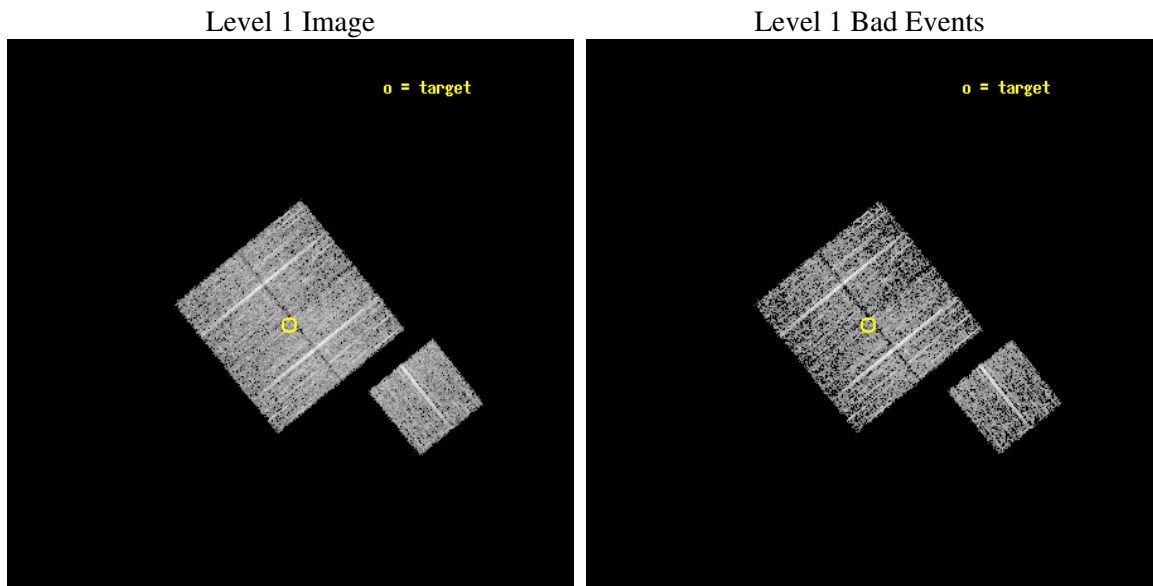
seq_num	900302
obs_id	4259
title	A CHANDRA WIDE-FIELD SURVEY TO MAP THE COSMIC WEB AND INVESTIGATE THE EVOLUTION OF NUCLEAR ACCRETION
observer	Dr. Christine Jones
object	SS20
dtcycle	0
cycle	P
ra_targ	217.38708
dec_targ	33.04953
ra_nom	217.38446255773
dec_nom	33.053579620393
roll_nom	141.0101128078
revision	2
ontime	4569.3590109646
livetime	4509.6569715732
ontime0	4572.4999912083
ontime1	4572.4999912083
ontime2	4572.4999912083
ontime3	4569.3590109646
ontime6	4569.3590209782
l2events	9294



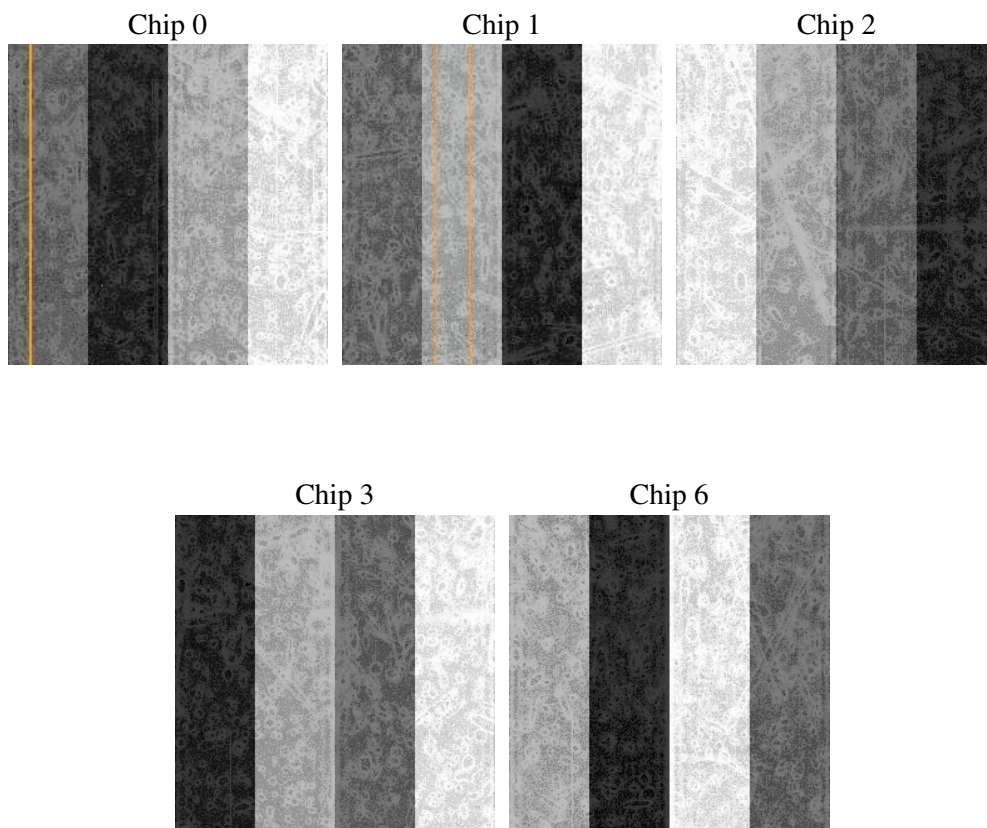
2 OBI

2.1 OBI

2.1.1 Images



2.1.2 Bias



2.1.3 Parameters

obi_num	1
ascdsver	7.6.8
caldsver	3.2.2
date	2006-07-30T07:46:05
revision	2

sched_exp_time	4800.000000
ontime	4573.3031229377
ontime0	4576.4441429973
ontime1	4576.4441230893
ontime2	4576.4441230893
ontime3	4573.3031229377
ontime6	4573.3031528592
l1events	113227

2.1.4 Events

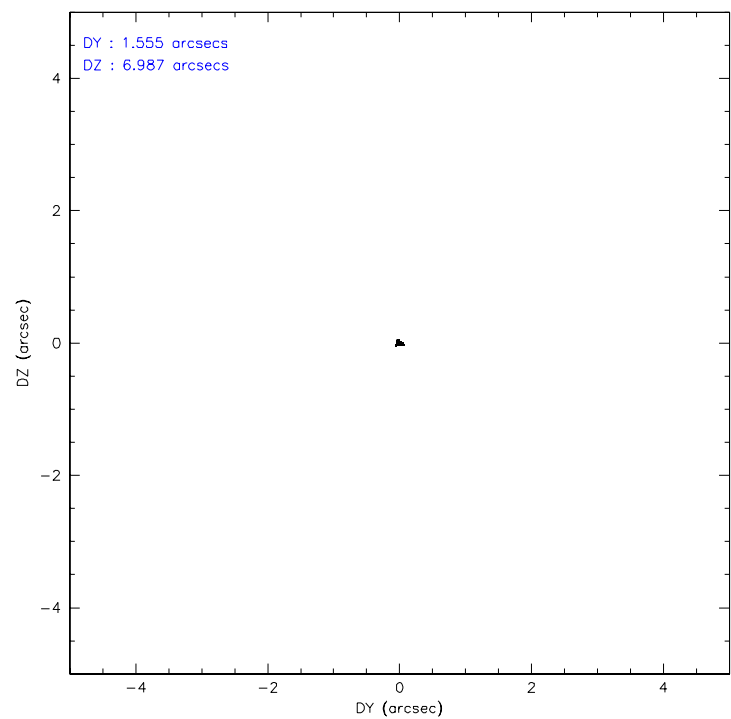
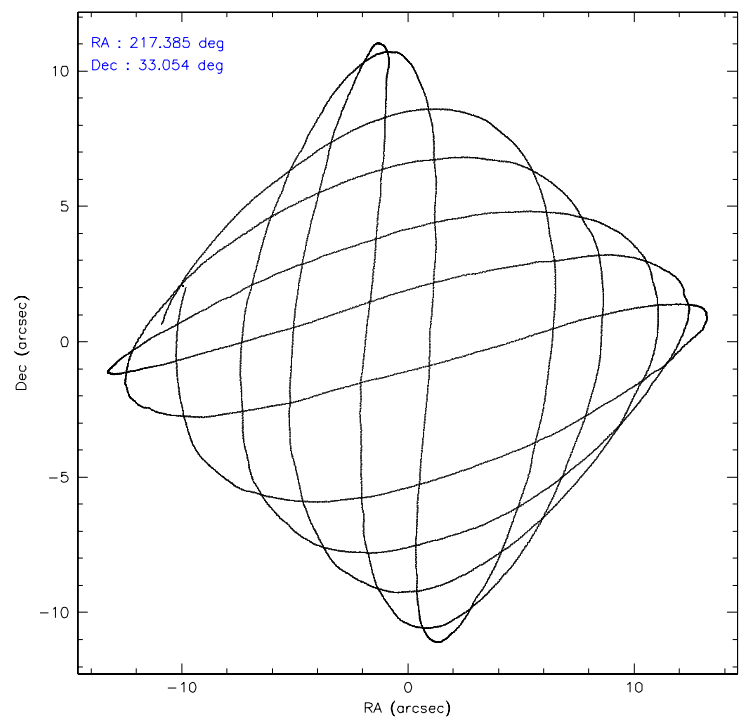
	ccd 0	ccd 1	ccd 2	ccd 3	ccd 6
level 1 events	21500	21626	25341	23042	21718
rejected events	19317	19229	23107	20820	19479
rejected %	89%	88%	91%	90%	89%

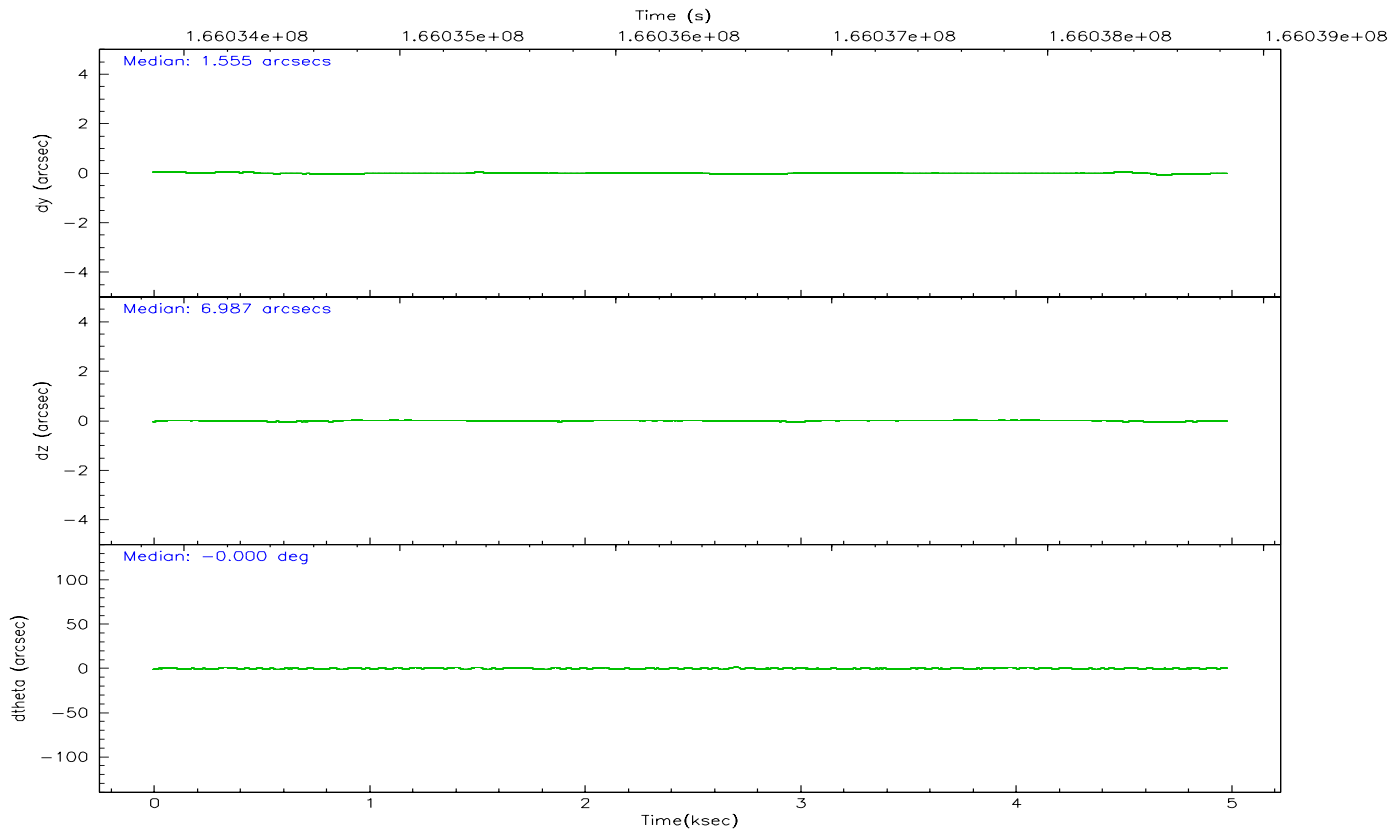
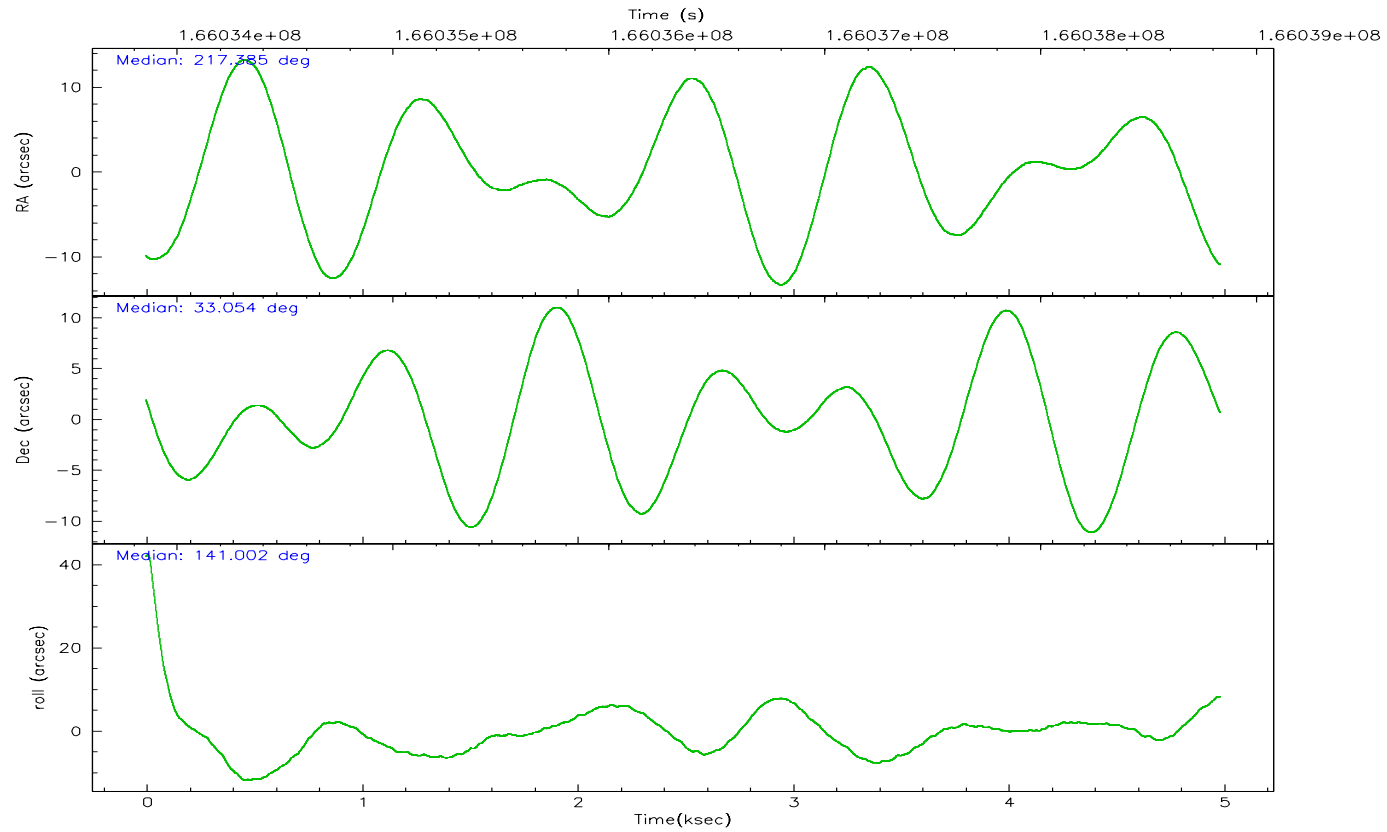
	ccd 0	ccd 1	ccd 2	ccd 3	ccd 6
grade 0 events	792	836	867	831	868
	3%	3%	3%	3%	3%
grade 1 events	13	6	12	9	11
	0%	0%	0%	0%	0%
grade 2 events	451	529	516	414	494
	2%	2%	2%	1%	2%
grade 3 events	285	286	237	274	244
	1%	1%	0%	1%	1%
grade 4 events	241	303	256	264	236
	1%	1%	1%	1%	1%
grade 5 events	656	795	587	781	769
	3%	3%	2%	3%	3%
grade 6 events	415	445	359	440	397
	1%	2%	1%	1%	1%
grade 7 events	18647	18426	22507	20029	18699
	86%	85%	88%	86%	86%

2.2 Compared Parameters

Parameter	Planned	Actual	Parameter	Planned	Actual
Instrument	ACIS	ACIS	Obspar format version number	6	6
Detector	ACIS-01236	ACIS-01236	Obspar file type	PREDICTED	ACTUAL
Grating	NONE	NONE	Obspar update status	NONE	UPDATED
Data mode	VFAINT	VFAINT	On-chip summing requested	N	N
Observation mode	POINTING	POINTING	Subarray requested	NONE	NONE
Pointing RA	217.416764	217.3844625577345	Alternating exposures requested	N	N
Pointing Dec	33.049442	33.05357962039297	Primary exposure time	0.000000	3.1
Pointing Roll	140.783814	141.0101128078036			
SIM focus pos (mm)	-0.782348	-0.7809083437167272			
SIM defocus (mm)	0	0.001439871863259334			
SIM translation stage pos (mm)	-233.592463	-233.5874344608287			
SIM translation stage offset (mm)	0	-0.005018542100998502			
Observation start time	166034035.184000	166033659.45207			
Observation start date	2003-04-06T16:32:51	2003-04-06T16:27:39			
Observation end time	166038835.184000	166038969.4648			
Observation end date	2003-04-06T17:52:51	2003-04-06T17:56:09			
Read mode	TIMED	TIMED			

2.3 Aspect



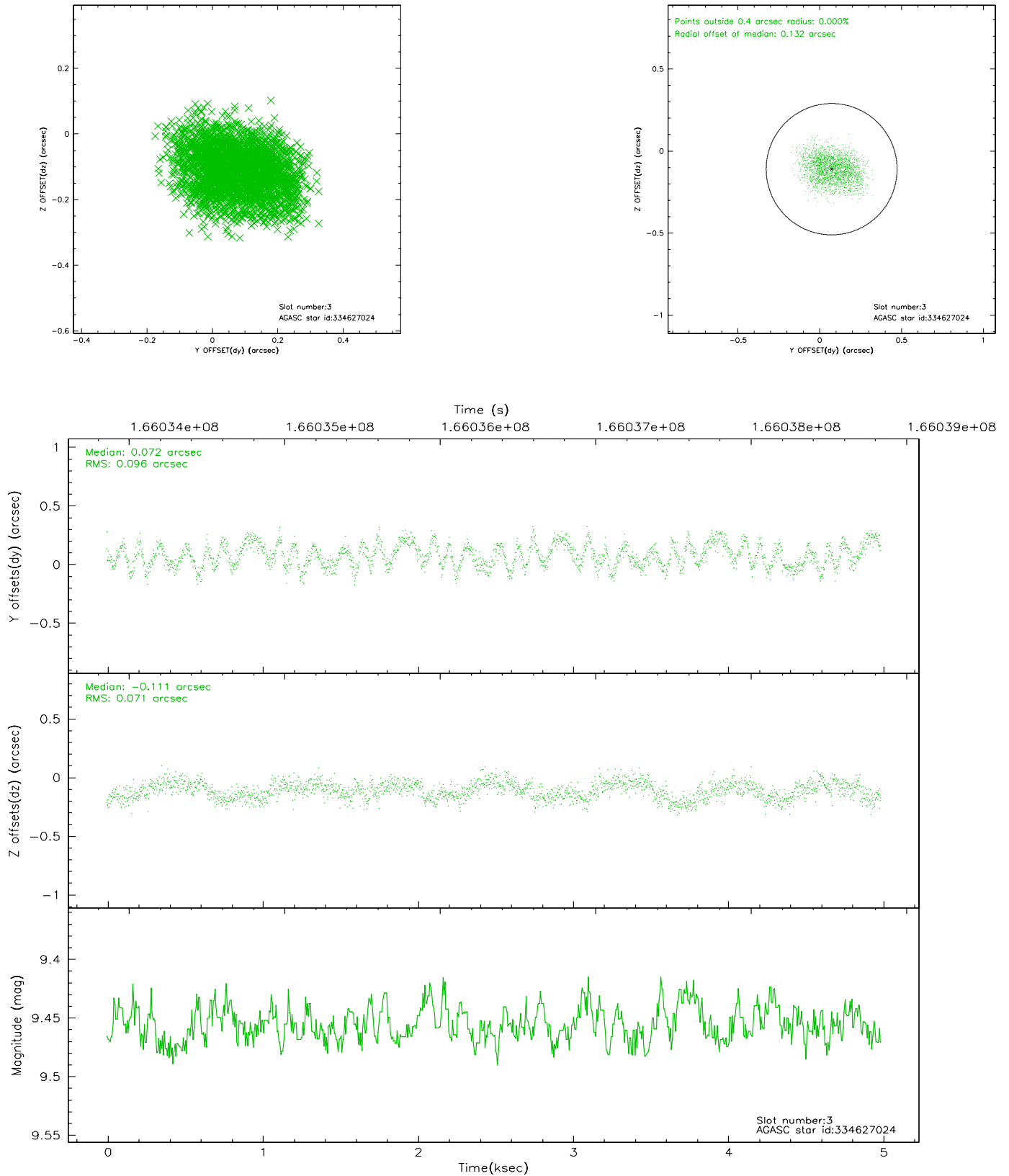


Slot Statistics

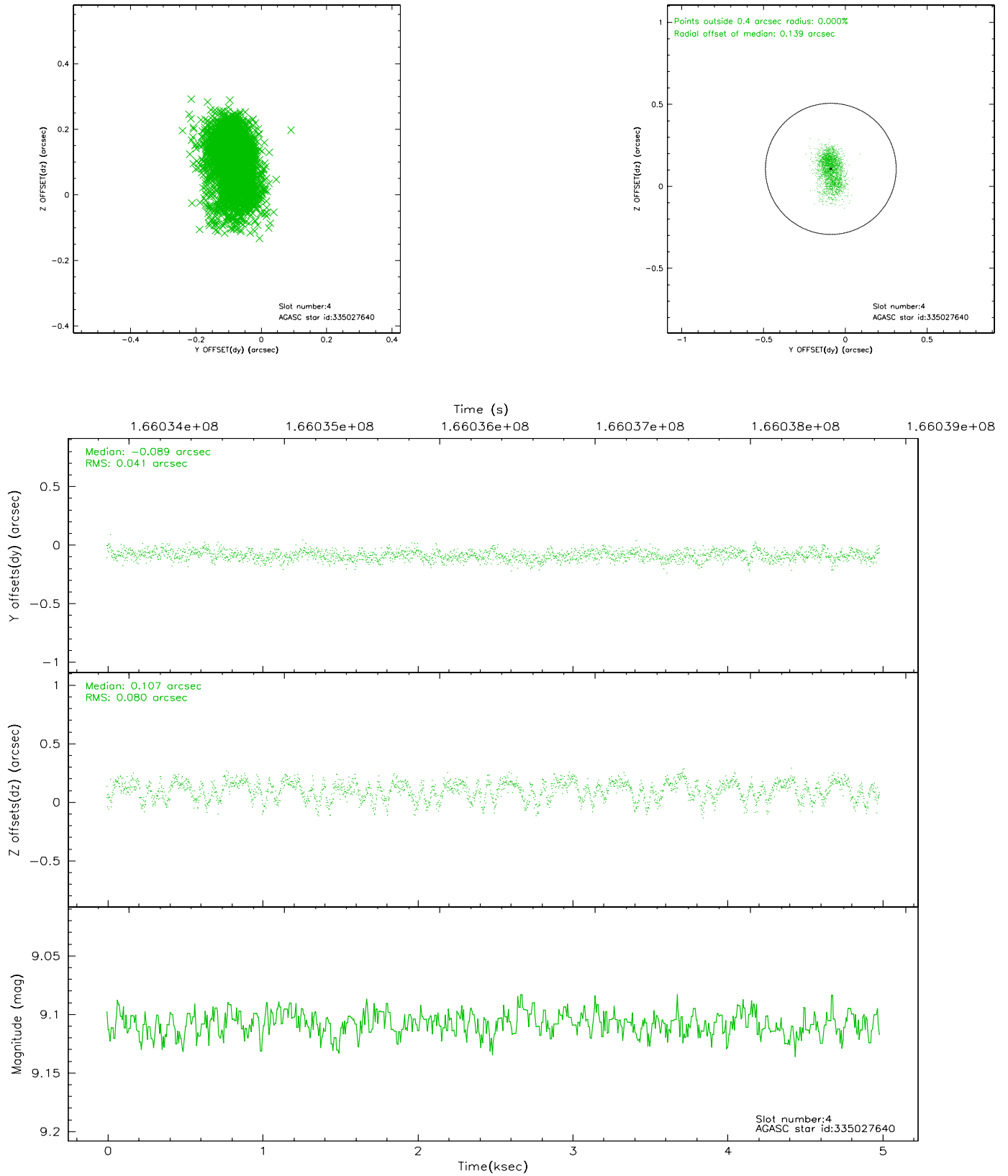
slot	status	id	mag	n_pts	med_dy	med_dz	dr1	dr2	ra	dec	mean_y	mean_z
0	FID	ACIS-I-1	7.25	1216	-0.011	0.038	0.006	0.009	0.000000	0.000000	938.24	-830.36
1	FID	ACIS-I-5	7.24	1216	-0.048	0.045	0.006	0.010	0.000000	0.000000	-1809.17	1066.60
2	FID	ACIS-I-6	7.27	1216	-0.032	-0.013	0.006	0.011	0.000000	0.000000	402.51	1712.37
3	GUIDE	334627024	9.46	2432	0.072	-0.111	0.129	0.199	217.318801	32.278221	-1524.48	2339.24
4	GUIDE	335027640	9.11	2433	-0.089	0.107	0.093	0.159	218.092211	33.193770	-1244.14	-1693.22
5	GUIDE	335028696	9.18	2433	0.063	0.150	0.111	0.192	217.260519	33.844112	2171.04	-1921.59
6	GUIDE	335029808	9.07	2433	-0.091	-0.043	0.081	0.131	216.789548	33.180488	1766.97	824.45
7	GUIDE	335022112	9.22	2431	0.038	-0.093	0.101	0.157	216.659296	32.794758	1202.07	2153.85

2.4 Star Slots

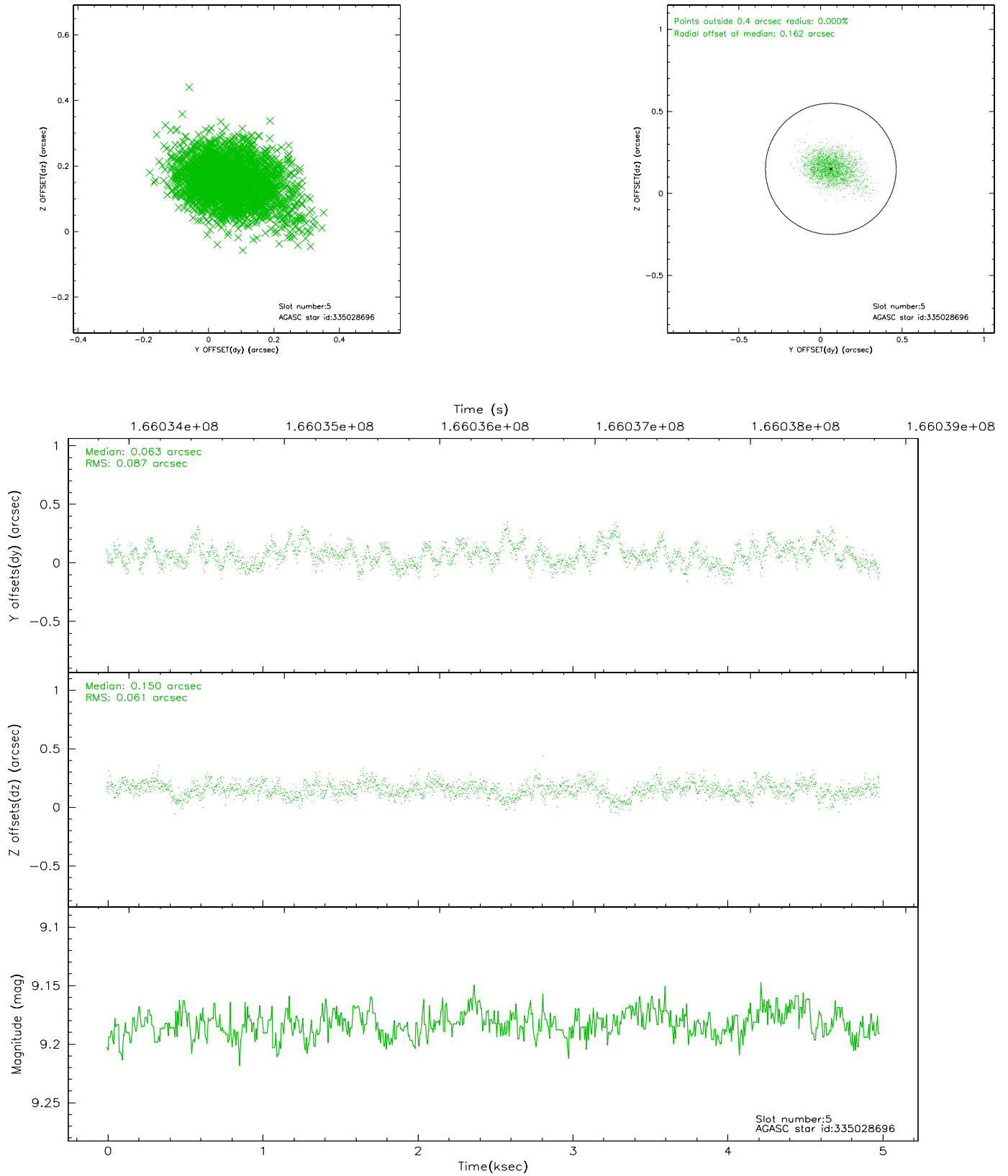
2.4.1 Slot 3



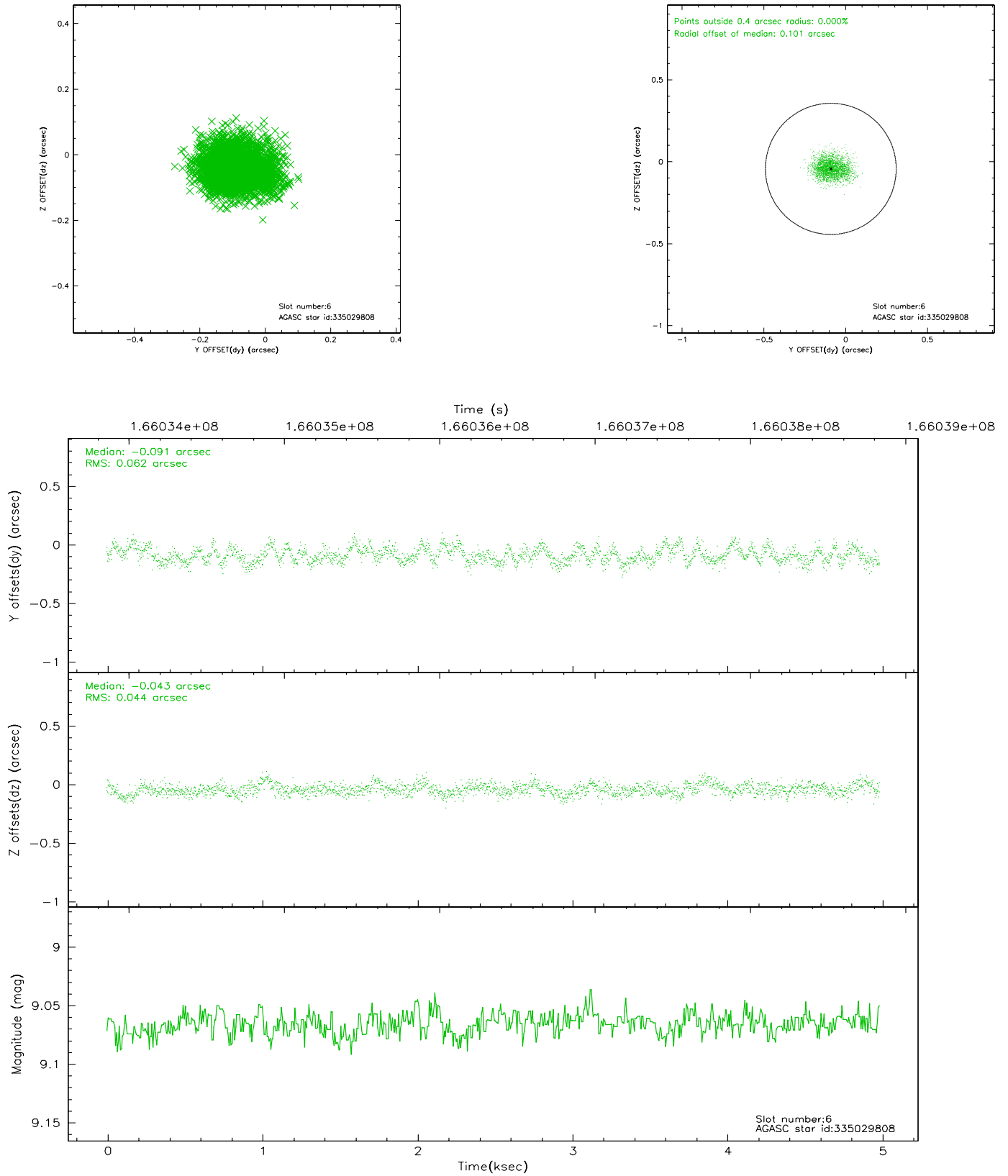
2.4.2 Slot 4



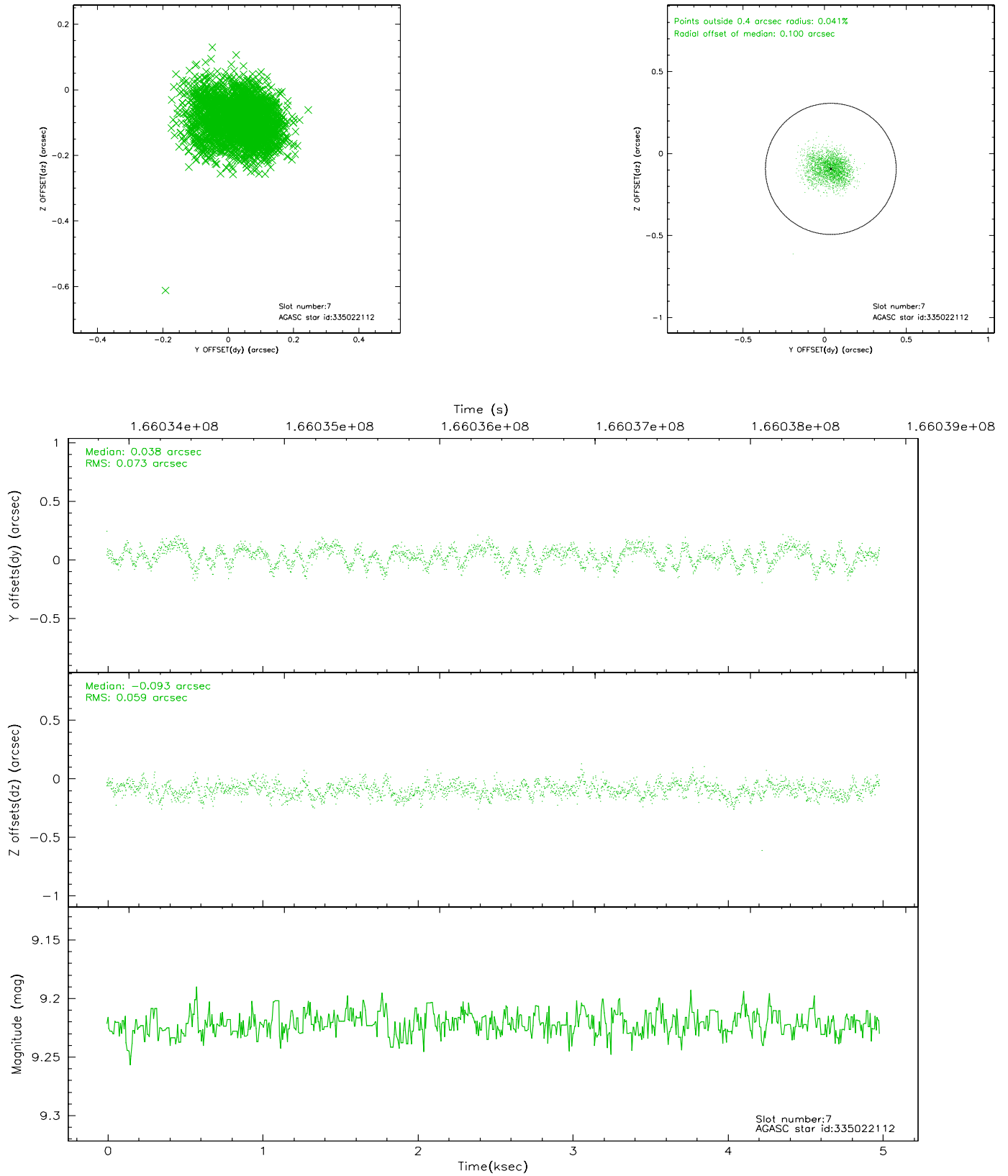
2.4.3 Slot 5



2.4.4 Slot 6

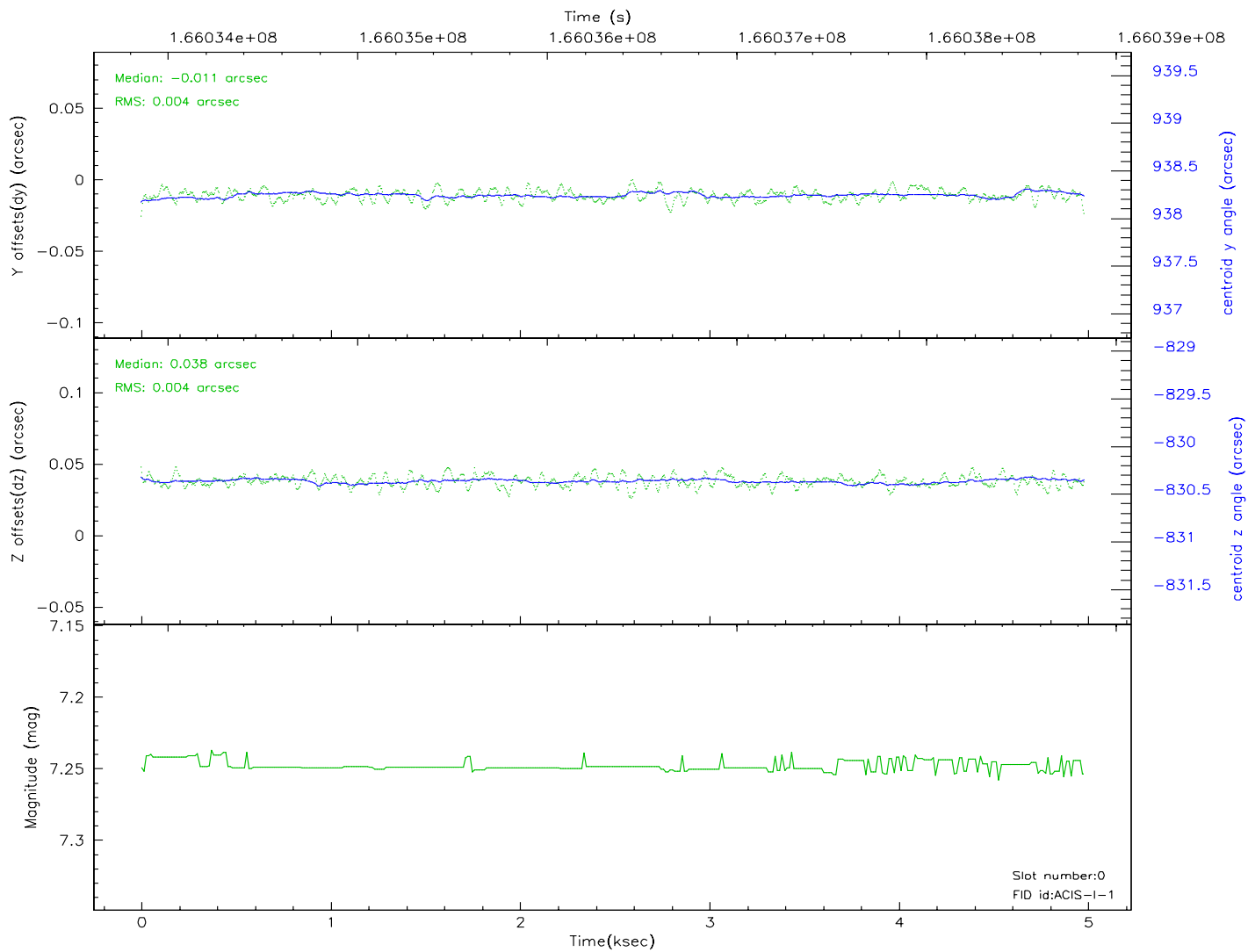
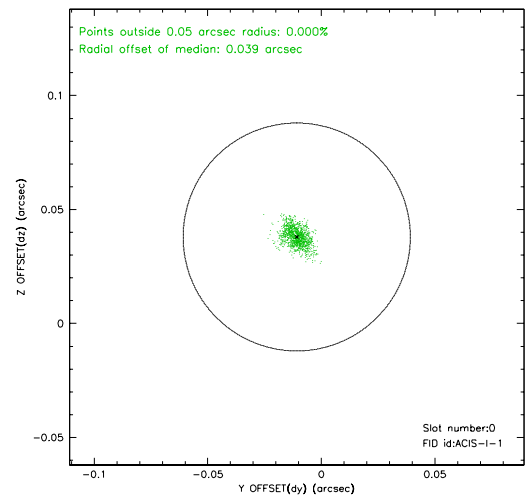
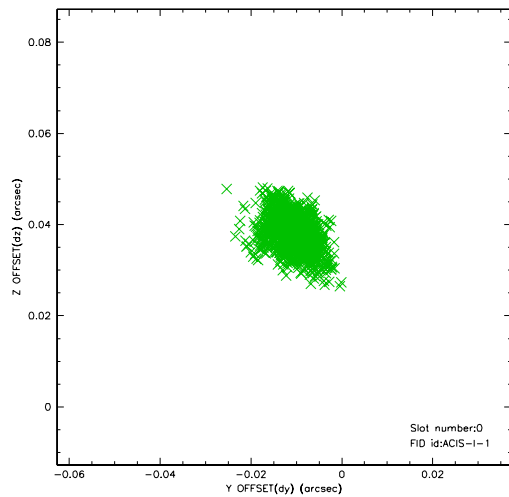


2.4.5 Slot 7

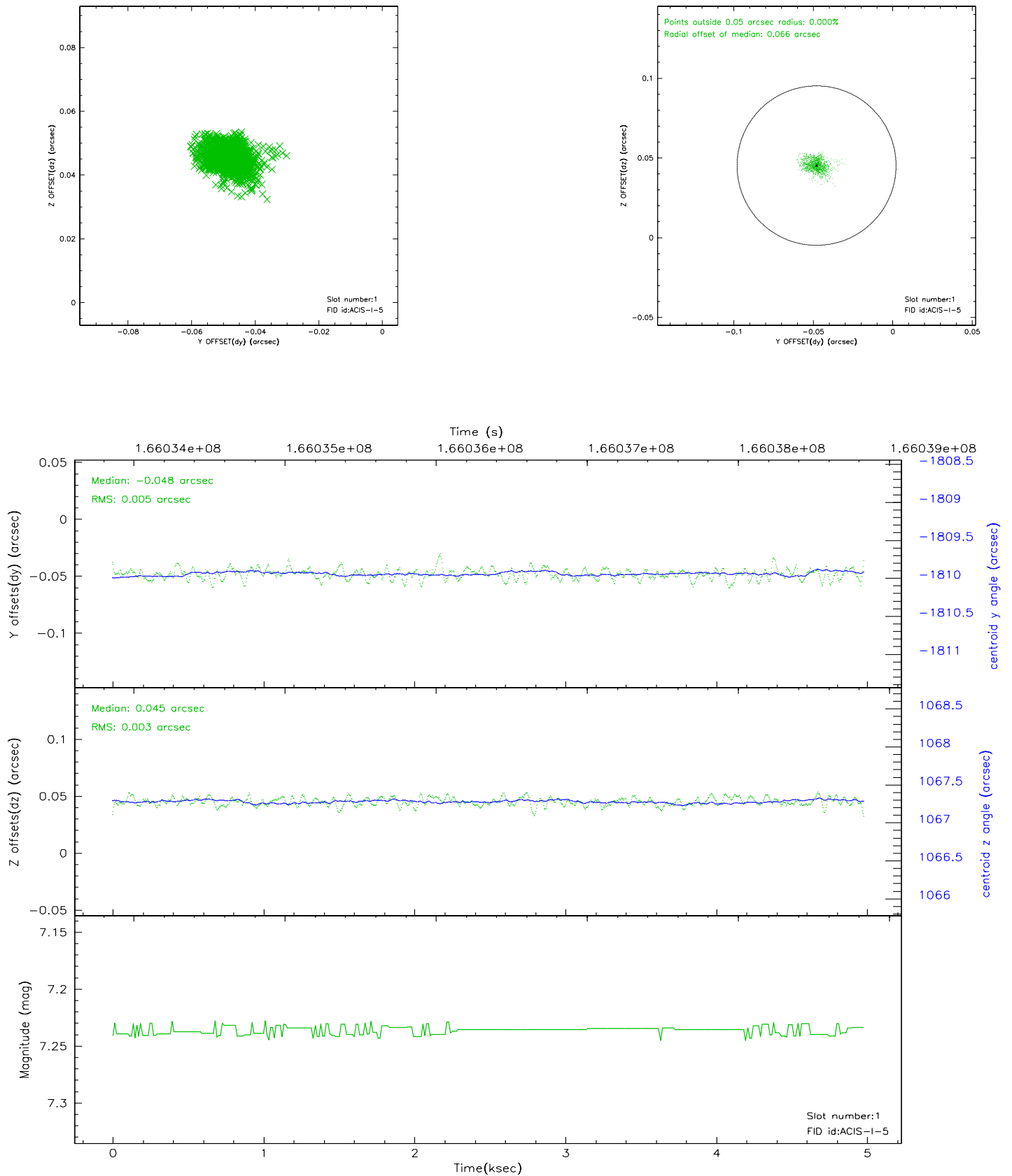


2.5 FID Slots

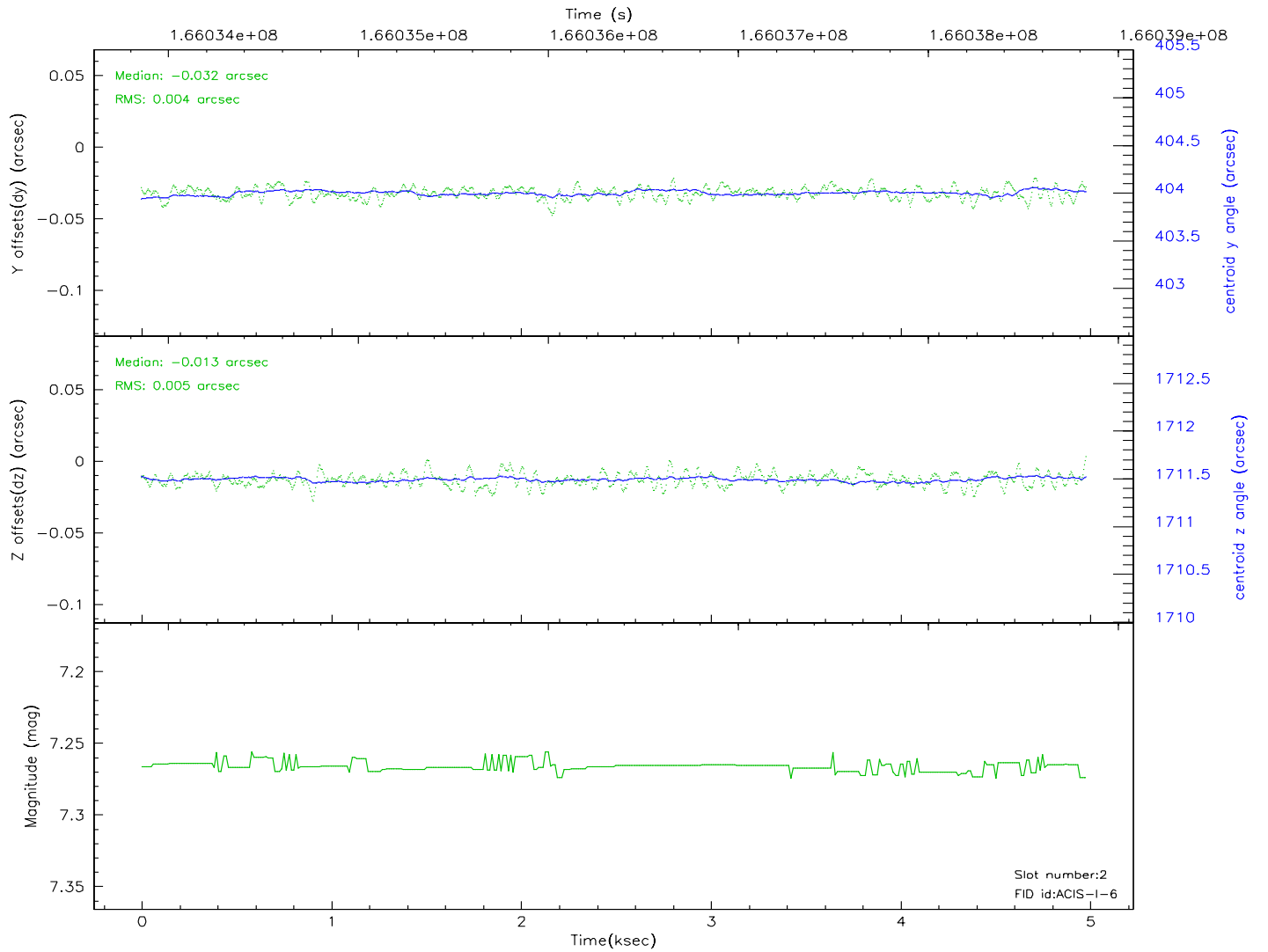
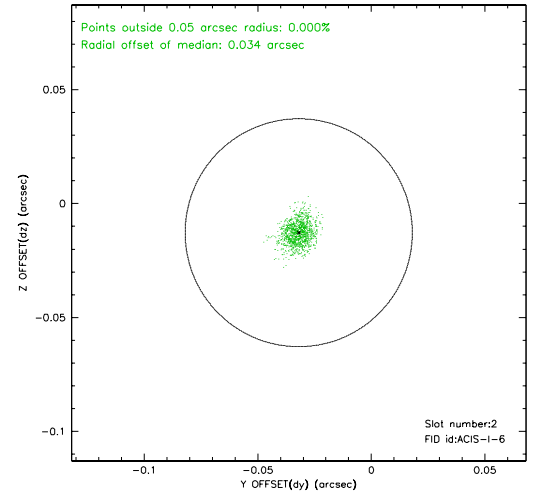
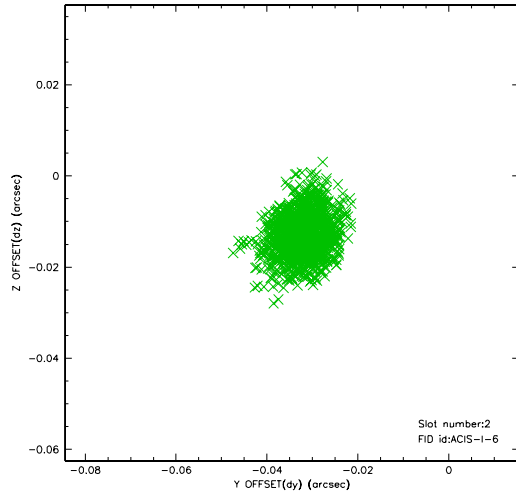
2.5.1 Slot 0



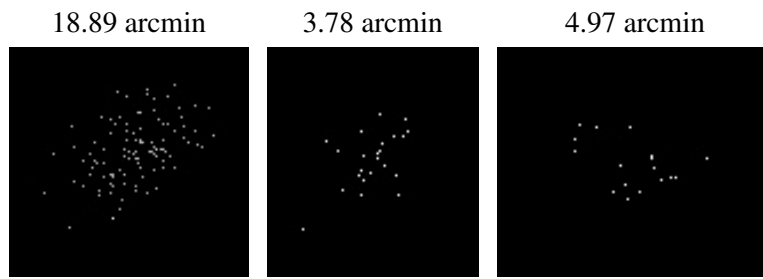
2.5.2 Slot 1



2.5.3 Slot 2



3 Point Sources



A Summary

A.1 Status

V&V Scientist	Jen Lauer
V&V Date (YYYY-MM-DD)	2006.07.30
V&V Edition	1
V&V Disposition and Status	OK
V&V Charge Time	4.569

A.2 Comments