

# V&V Reference Report

## L2 ASCDS Version : 7.6.8

Observation 4089 - L2 Version 001  
Chandra X-Ray Center

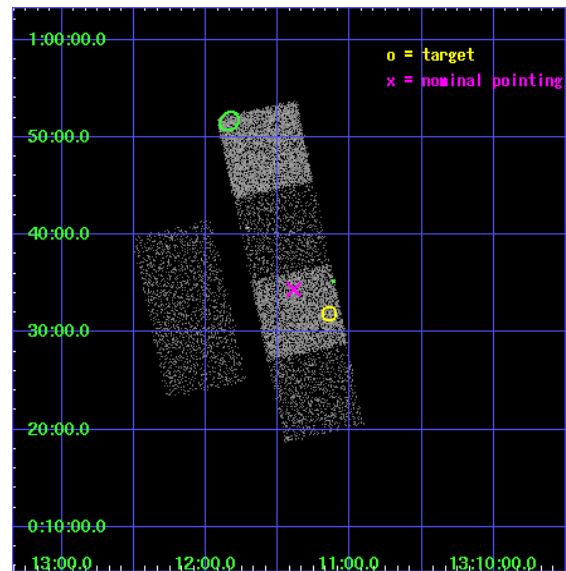
L2 Processing Date : Jul 22 2006

## Contents

<b>1</b>	<b>Front</b>	<b>2</b>
<b>2</b>	<b>OBI</b>	<b>3</b>
2.1	OBI . . . . .	3
2.1.1	Images . . . . .	3
2.1.2	Bias . . . . .	3
2.1.3	Parameters . . . . .	4
2.1.4	Events . . . . .	4
2.2	Compared Parameters . . . . .	5
2.3	Aspect . . . . .	6
2.4	Star Slots . . . . .	9
2.4.1	Slot 3 . . . . .	9
2.4.2	Slot 4 . . . . .	10
2.4.3	Slot 5 . . . . .	11
2.4.4	Slot 6 . . . . .	12
2.4.5	Slot 7 . . . . .	13
2.5	FID Slots . . . . .	14
2.5.1	Slot 0 . . . . .	14
2.5.2	Slot 1 . . . . .	15
2.5.3	Slot 2 . . . . .	16
<b>3</b>	<b>Point Sources</b>	<b>17</b>
<b>A</b>	<b>Summary</b>	<b>18</b>
A.1	Status . . . . .	18
A.2	Comments . . . . .	18

# 1 Front

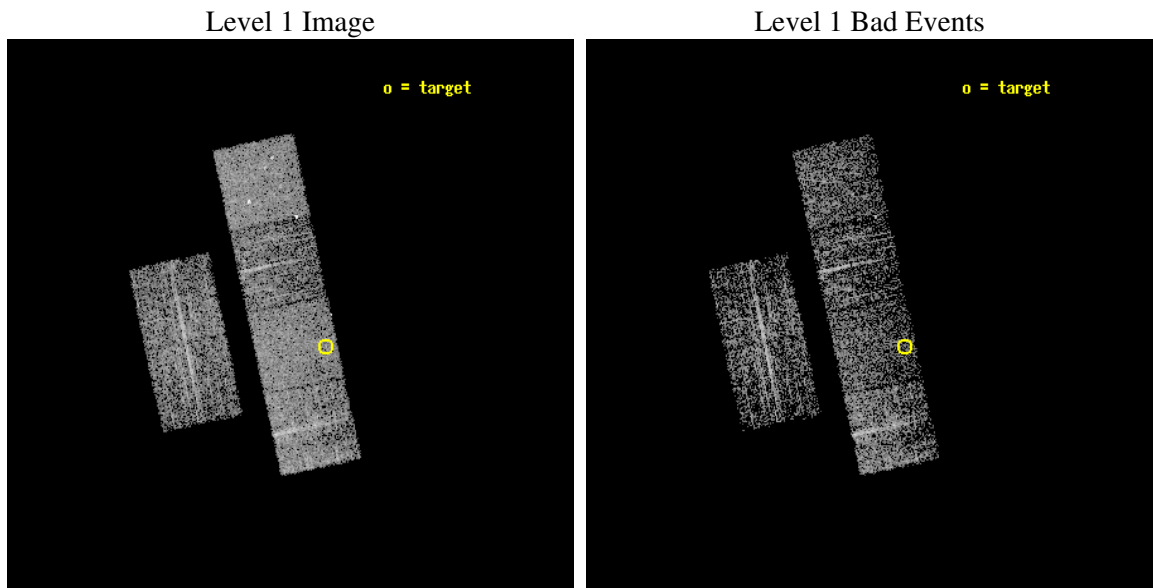
seq_num	700768
obs_id	4089
title	ARE ALL NARROW-LINE SEYFERT 1S ULTRASOFT X-RAY SOURCES?
observer	Prof RICHARD POGGE
object	SDSS J131108.48+003151.8
dtcycle	0
cycle	P
ra_targ	197.785417
dec_targ	0.531056
ra_nom	197.84725687881
dec_nom	0.57277490608382
roll_nom	77.965725962919
revision	3
ontime	1753.5999934673
livetime	1731.3948544589
ontime2	1753.5999934673
ontime3	1753.5999934673
ontime5	1753.5999934673
ontime6	1753.5999934673
ontime7	1753.5999934673
ontime8	1750.3590132296
l2events	16897



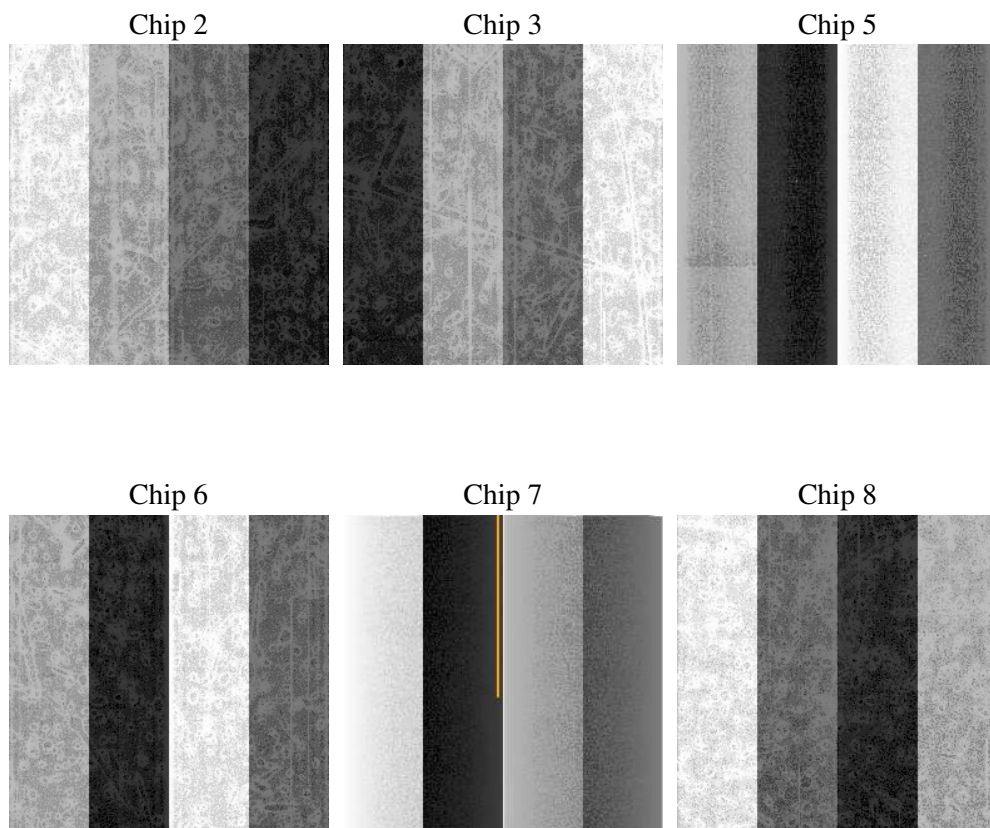
## 2 OBI

### 2.1 OBI

#### 2.1.1 Images



#### 2.1.2 Bias



### 2.1.3 Parameters

obi_num	1
ascdsver	7.6.8
caldbver	3.2.2
date	2006-07-22T10:59:23
revision	3

sched_exp_time	2000.000000
ontime	1759.8683037162
ontime2	1759.8683037162
ontime3	1759.8683037162
ontime5	1759.8683037162
ontime6	1759.8683037162
ontime7	1759.8683037162
ontime8	1756.6272238791
l1events	83614

### 2.1.4 Events

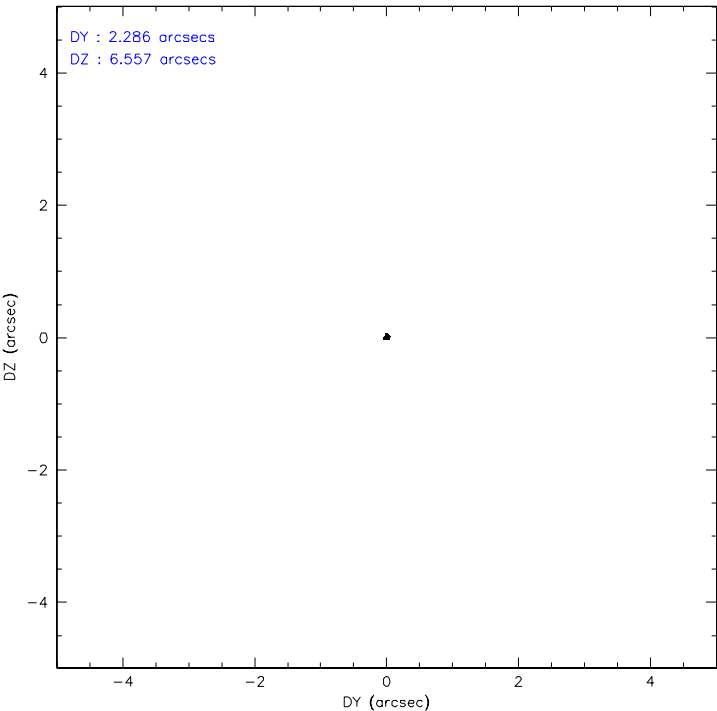
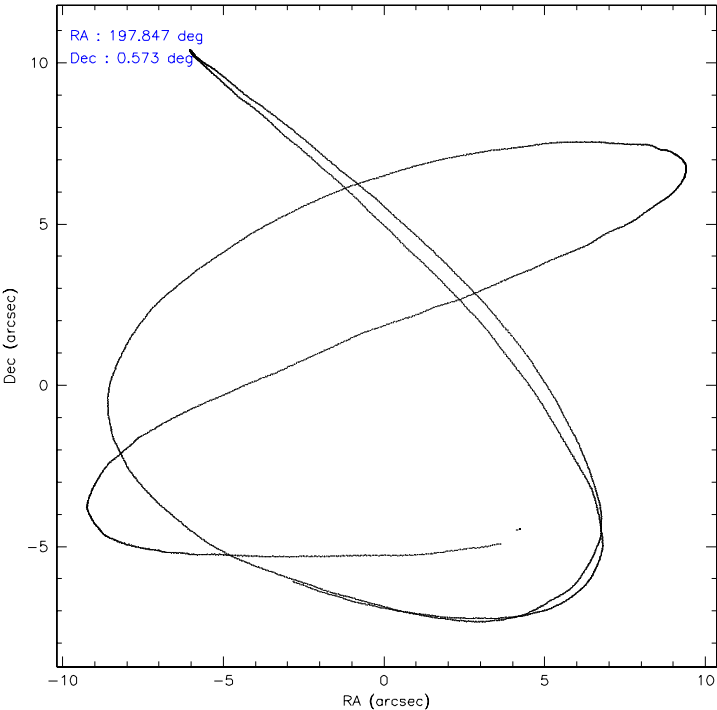
	ccd 2	ccd 3	ccd 5	ccd 6	ccd 7	ccd 8
level 1 events	11970	11492	17183	10959	15243	16767
rejected events	10672	10269	9561	9630	9442	14141
rejected %	89%	89%	55%	87%	61%	84%

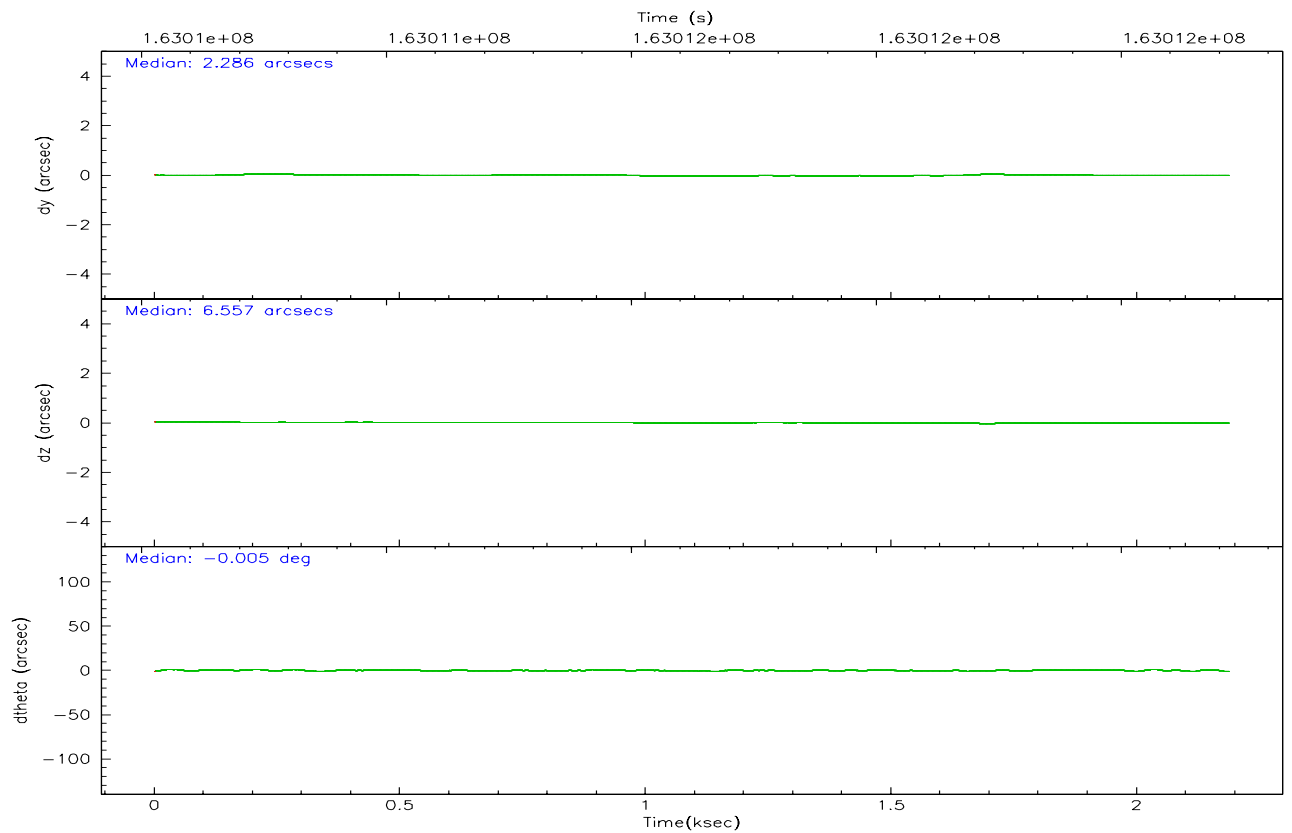
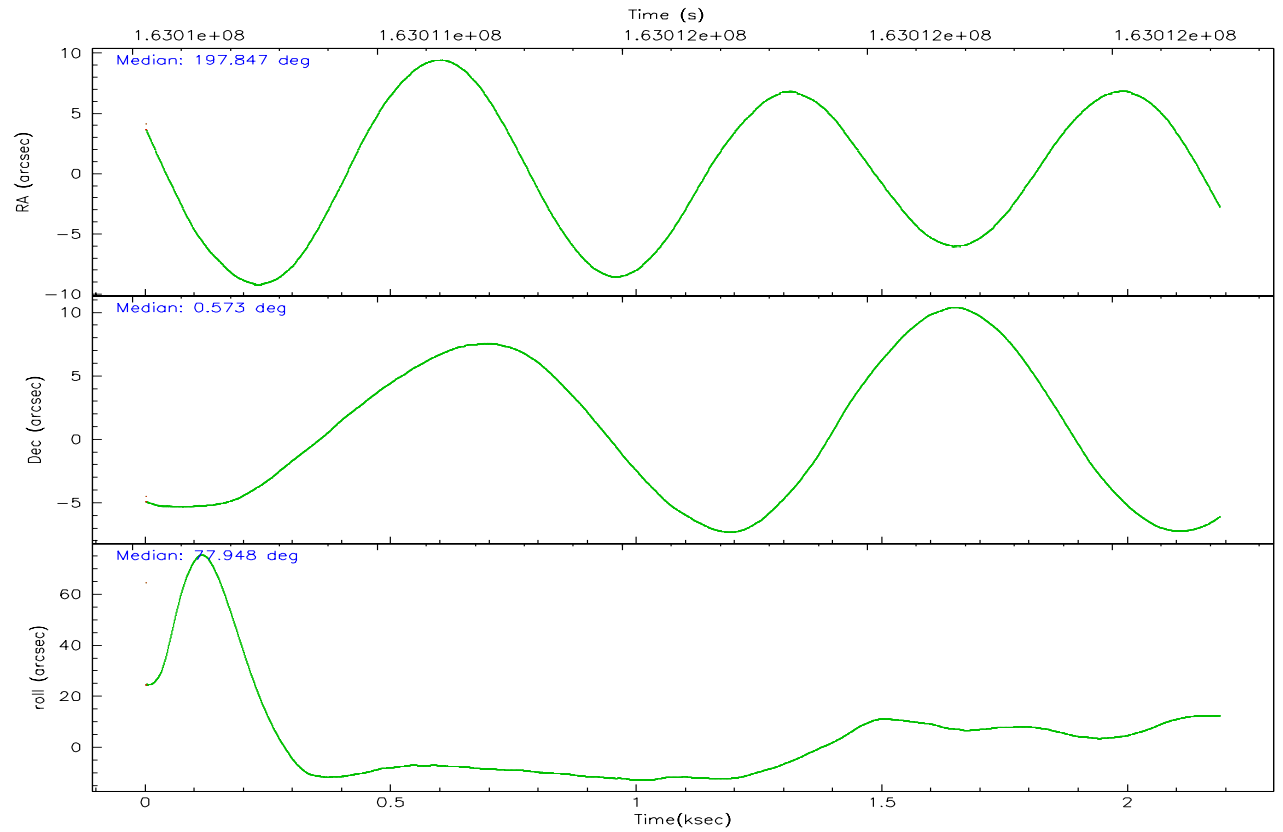
	ccd 2	ccd 3	ccd 5	ccd 6	ccd 7	ccd 8
grade 0 events	577	561	763	554	361	778
	4%	4%	4%	5%	2%	4%
grade 1 events	6	7	35	6	10	20
	0%	0%	0%	0%	0%	0%
grade 2 events	244	232	2325	260	1512	600
	2%	2%	13%	2%	9%	3%
grade 3 events	132	122	207	136	304	301
	1%	1%	1%	1%	1%	1%
grade 4 events	128	117	183	121	258	273
	1%	1%	1%	1%	1%	1%
grade 5 events	455	493	858	475	979	572
	3%	4%	4%	4%	6%	3%
grade 6 events	220	200	4168	263	3386	705
	1%	1%	24%	2%	22%	4%
grade 7 events	10208	9760	8644	9144	8433	13518
	85%	84%	50%	83%	55%	80%

## 2.2 Compared Parameters

Parameter	Planned	Actual	Parameter	Planned	Actual
Instrument	ACIS	ACIS	Obspar format version number	6	6
Detector	ACIS-235678	ACIS-235678	Obspar file type	PREDICTED	ACTUAL
Grating	NONE	NONE	Obspar update status	NONE	UPDATED
Data mode	FAINT	FAINT	On-chip summing requested	N	N
Observation mode	POINTING	POINTING	Subarray requested	NONE	NONE
Pointing RA	197.856084	197.8472568788125	Alternating exposures requested	N	N
Pointing Dec	0.547167	0.5727749060838219	Primary exposure time	0.000000	3.2
Pointing Roll	77.809350	77.96572596291918			
SIM focus pos (mm)	-0.684267	-0.6828225247311905			
SIM defocus (mm)	0	0.001444936568705701			
SIM translation stage pos (mm)	-190.132523	-190.1425803651734			
SIM translation stage offset (mm)	0	0.01005778216563158			
Observation start time	163010718.184000	163010276.27468			
Observation start date	2003-03-02T16:44:14	2003-03-02T16:37:56			
Observation end time	163012718.184000	163013154.4748			
Observation end date	2003-03-02T17:17:34	2003-03-02T17:25:54			
Read mode	TIMED	TIMED			

### 2.3 Aspect





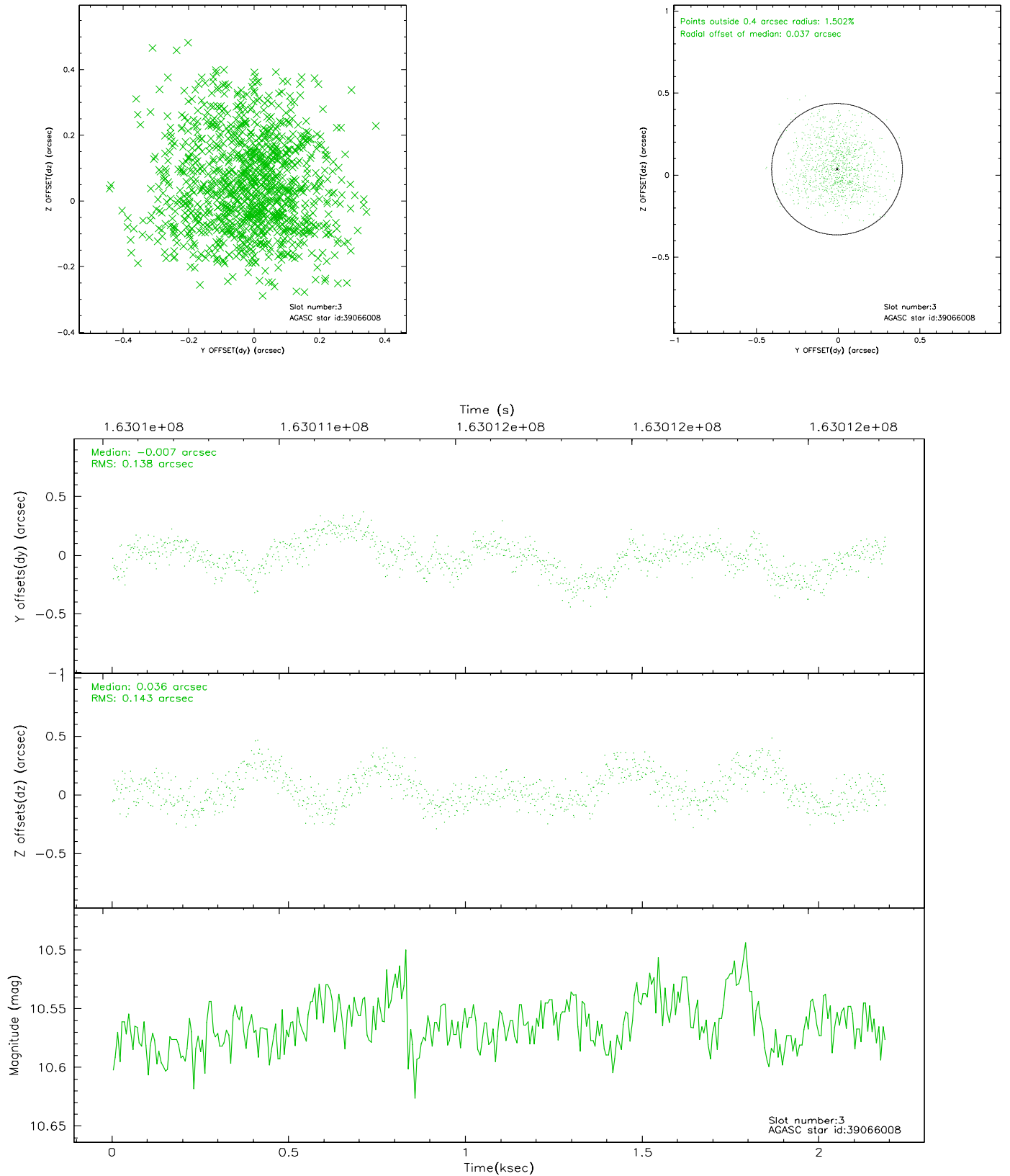
### Slot Statistics

slot	status	id	mag	n_pts	med_dy	med_dz	dr1	dr2	ra	dec	mean_y	mean_z
0	FID	ACIS-S-2	7.11	534	-0.032	0.026	0.006	0.009	0.000000	0.000000	-754.91	-1727.65
1	FID	ACIS-S-4	7.21	534	-0.044	0.008	0.004	0.008	0.000000	0.000000	2156.98	177.79
2	FID	ACIS-S-5	7.24	534	0.044	-0.026	0.006	0.009	0.000000	0.000000	-1803.87	174.75
3	GUIDE	39066008	10.56	1065	-0.007	0.036	0.217	0.340	197.446837	0.858969	786.81	1676.78
4	GUIDE	39066384	9.83	1063	0.088	-0.160	0.168	0.251	197.255307	0.655946	-72.56	2197.33
5	GUIDE	39193952	10.04	1045	-0.069	-0.036	0.108	0.174	197.855382	1.078271	1868.82	408.66
6	GUIDE	39198040	10.12	1060	0.079	0.207	0.129	0.209	197.984957	0.836282	1118.35	-233.21
7	GUIDE	39194296	10.14	1040	-0.082	-0.063	0.163	0.247	197.857882	1.097548	1939.95	411.85

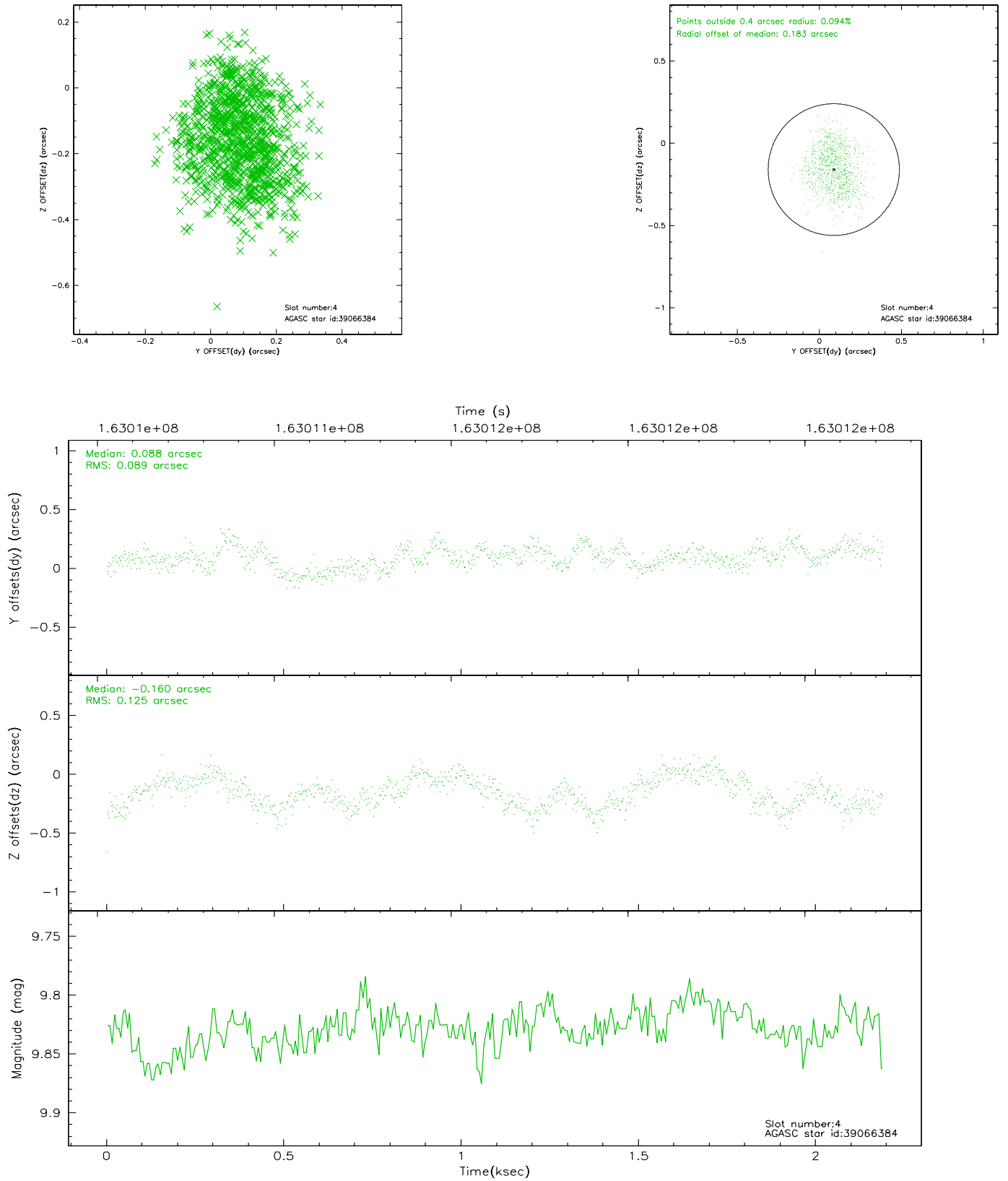


## 2.4 Star Slots

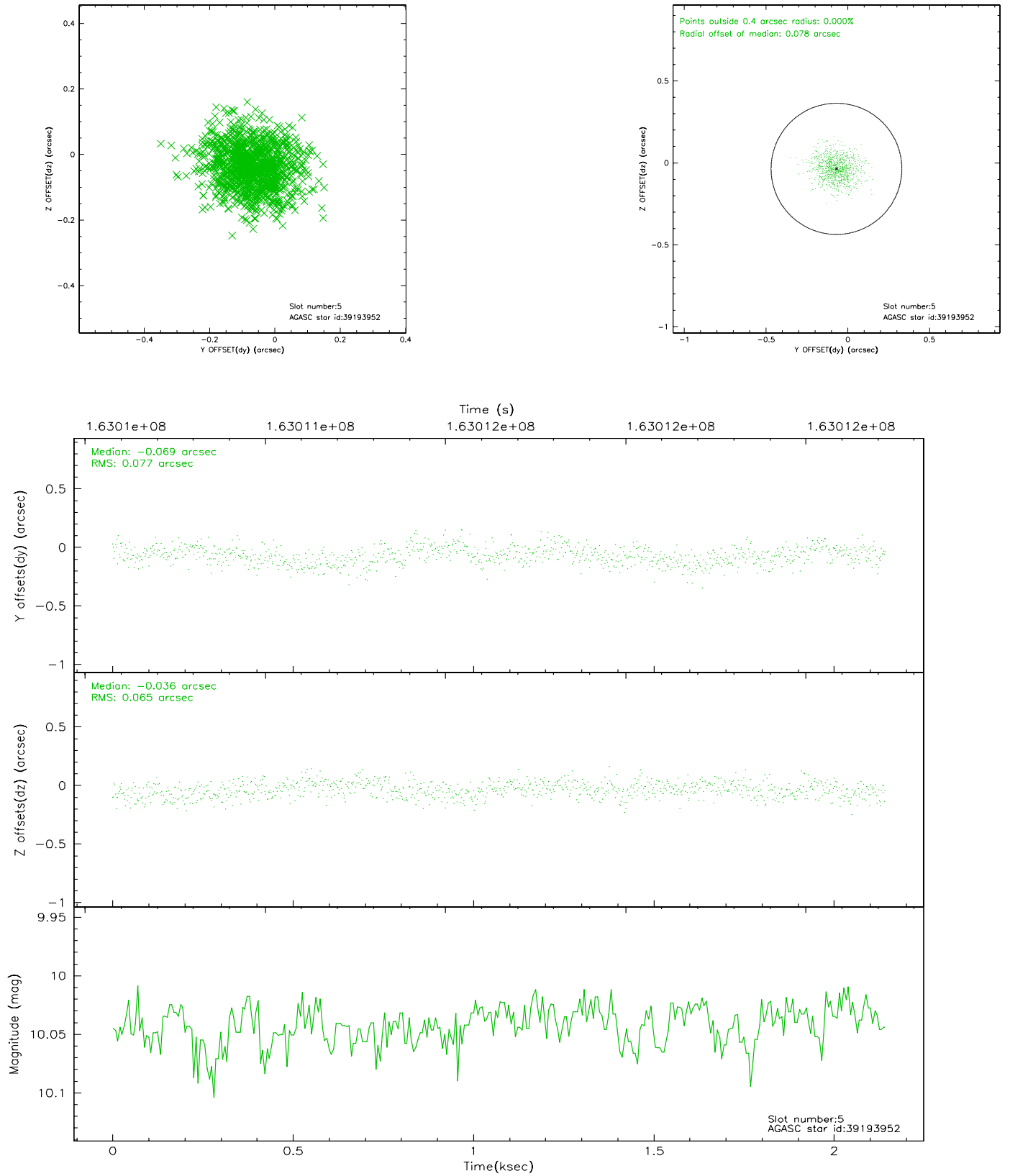
### 2.4.1 Slot 3



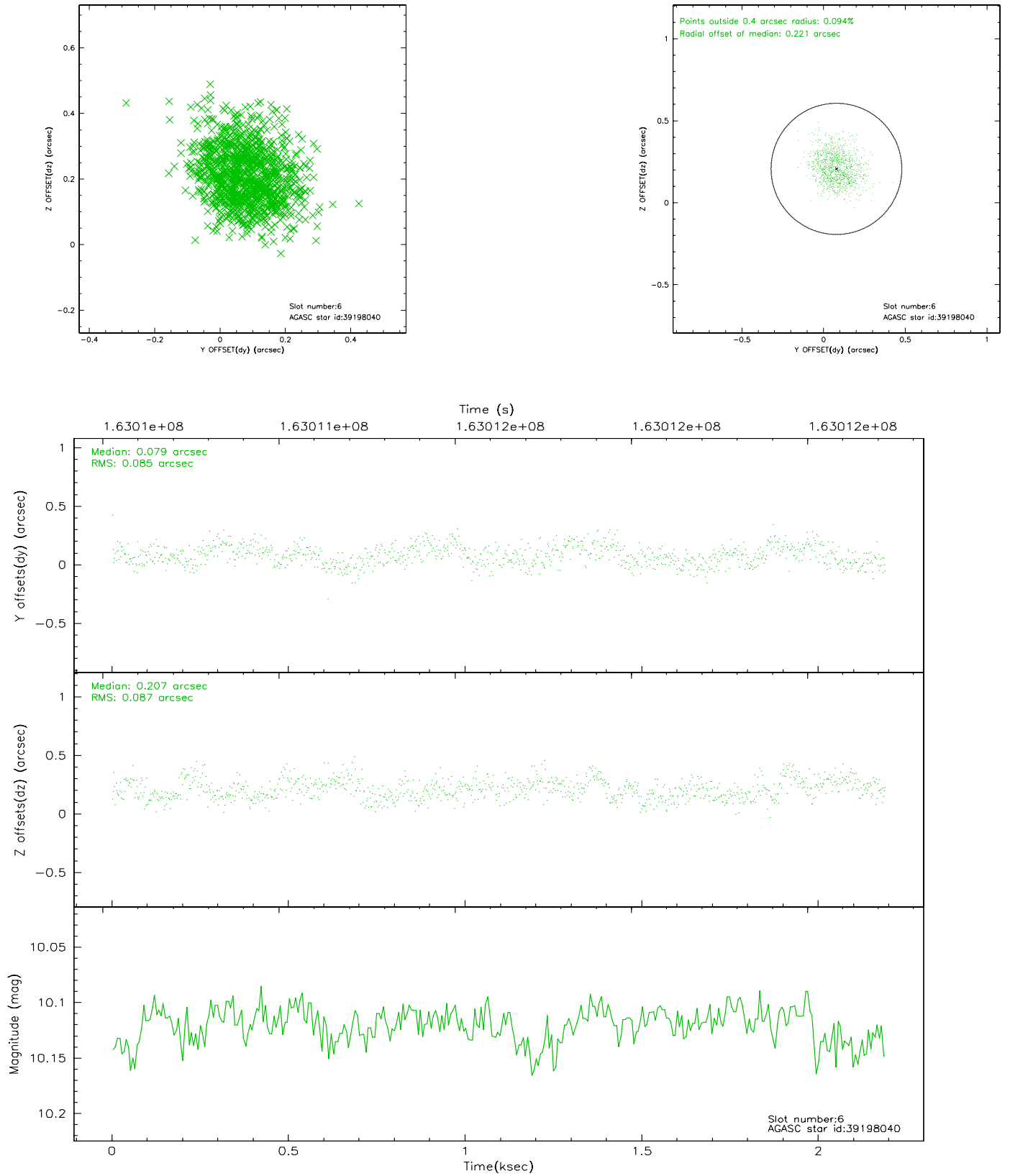
## 2.4.2 Slot 4



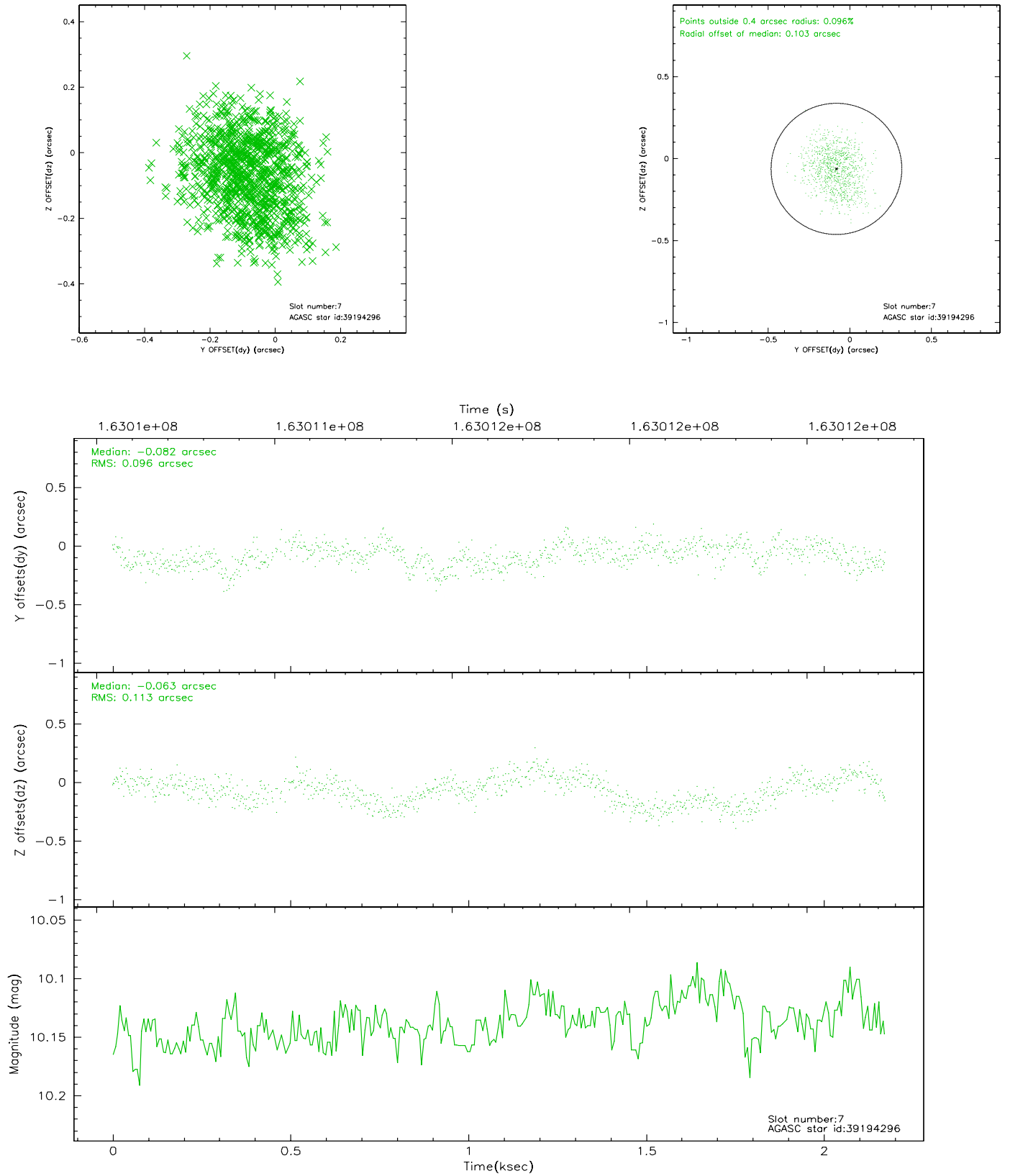
### 2.4.3 Slot 5



## 2.4.4 Slot 6

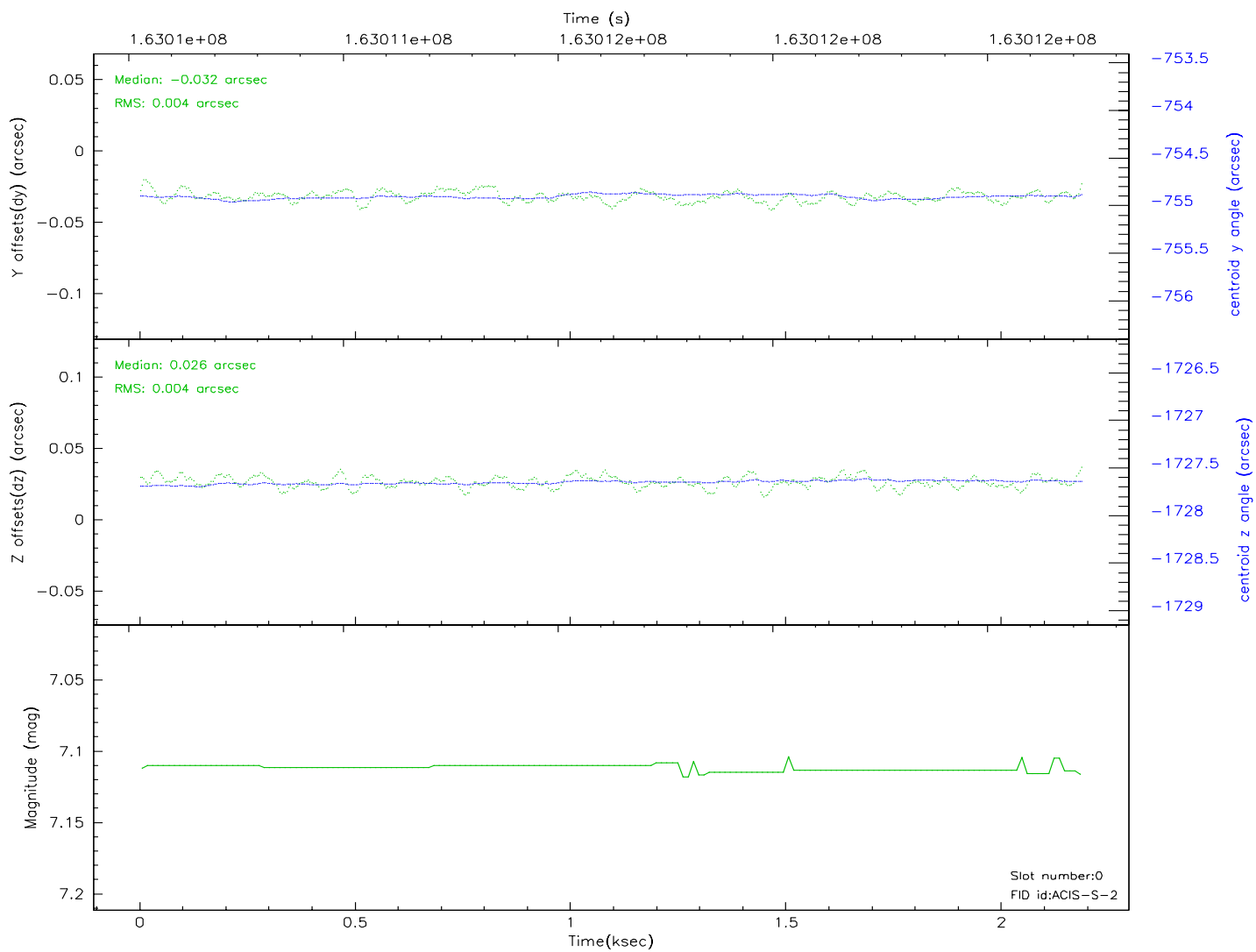
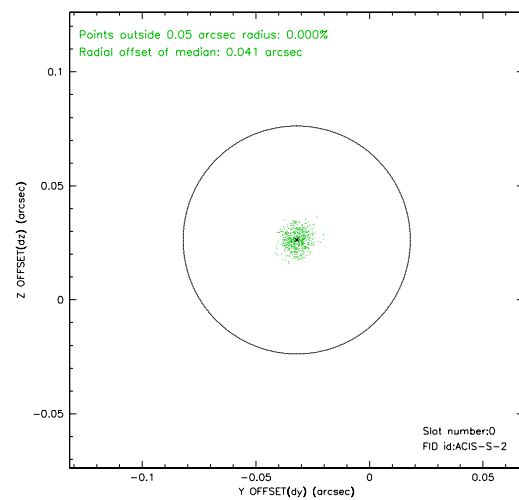
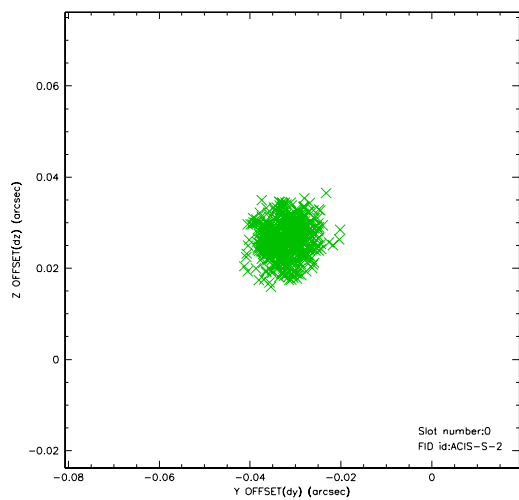


## 2.4.5 Slot 7

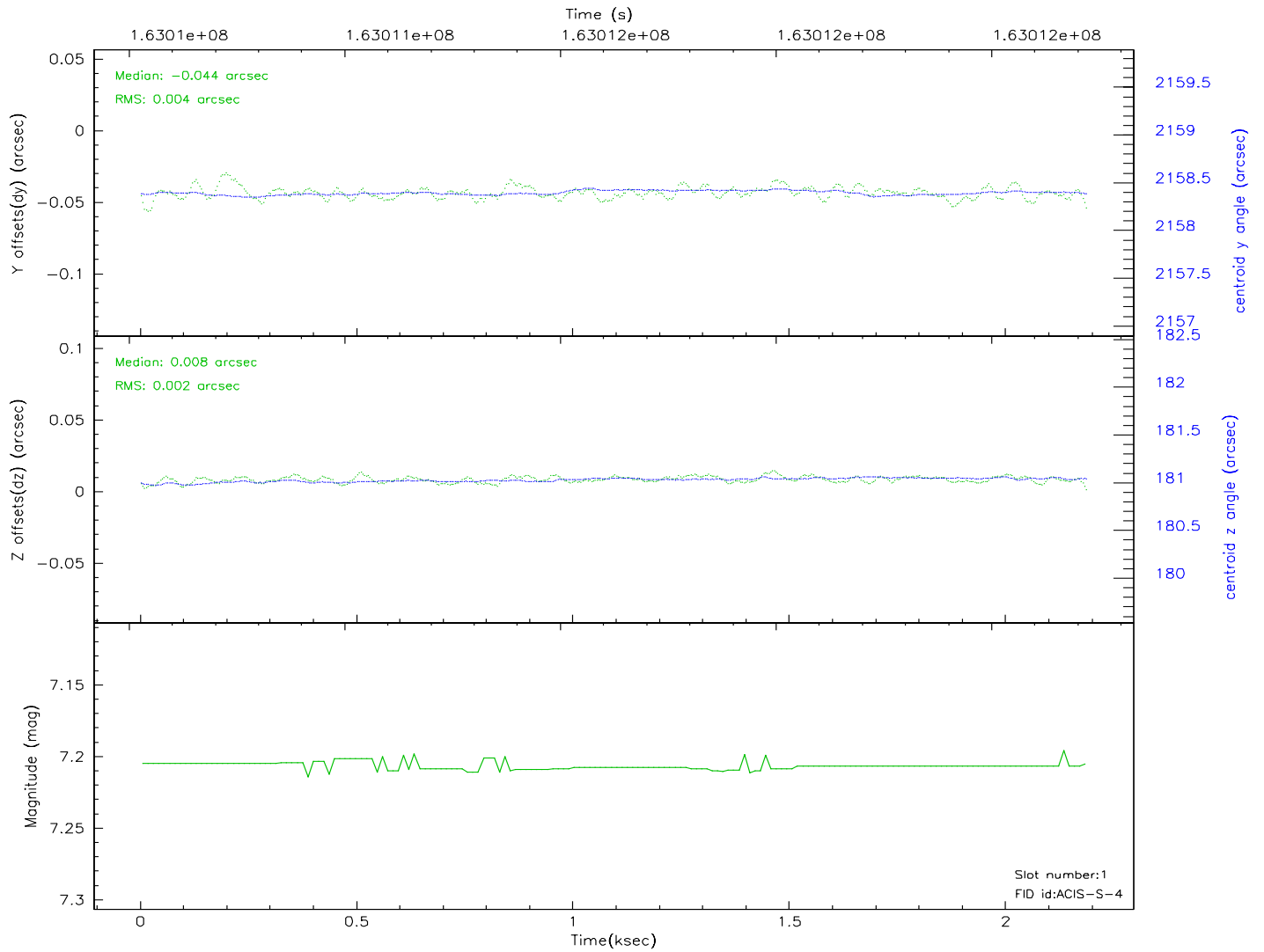
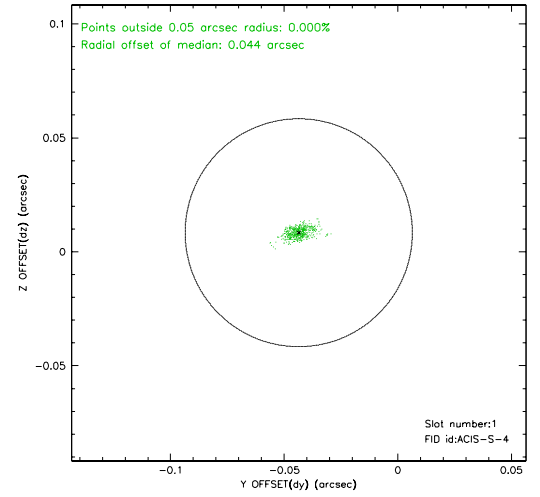
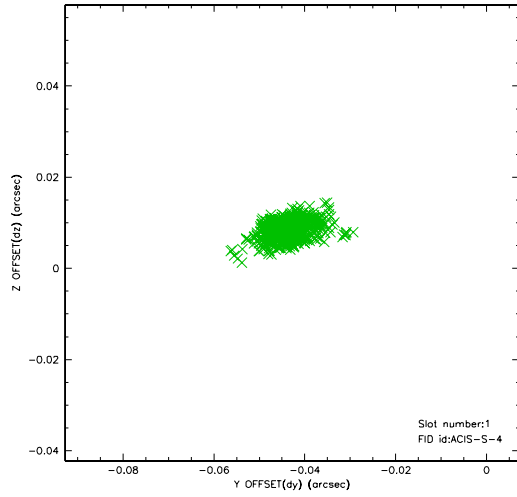


## 2.5 FID Slots

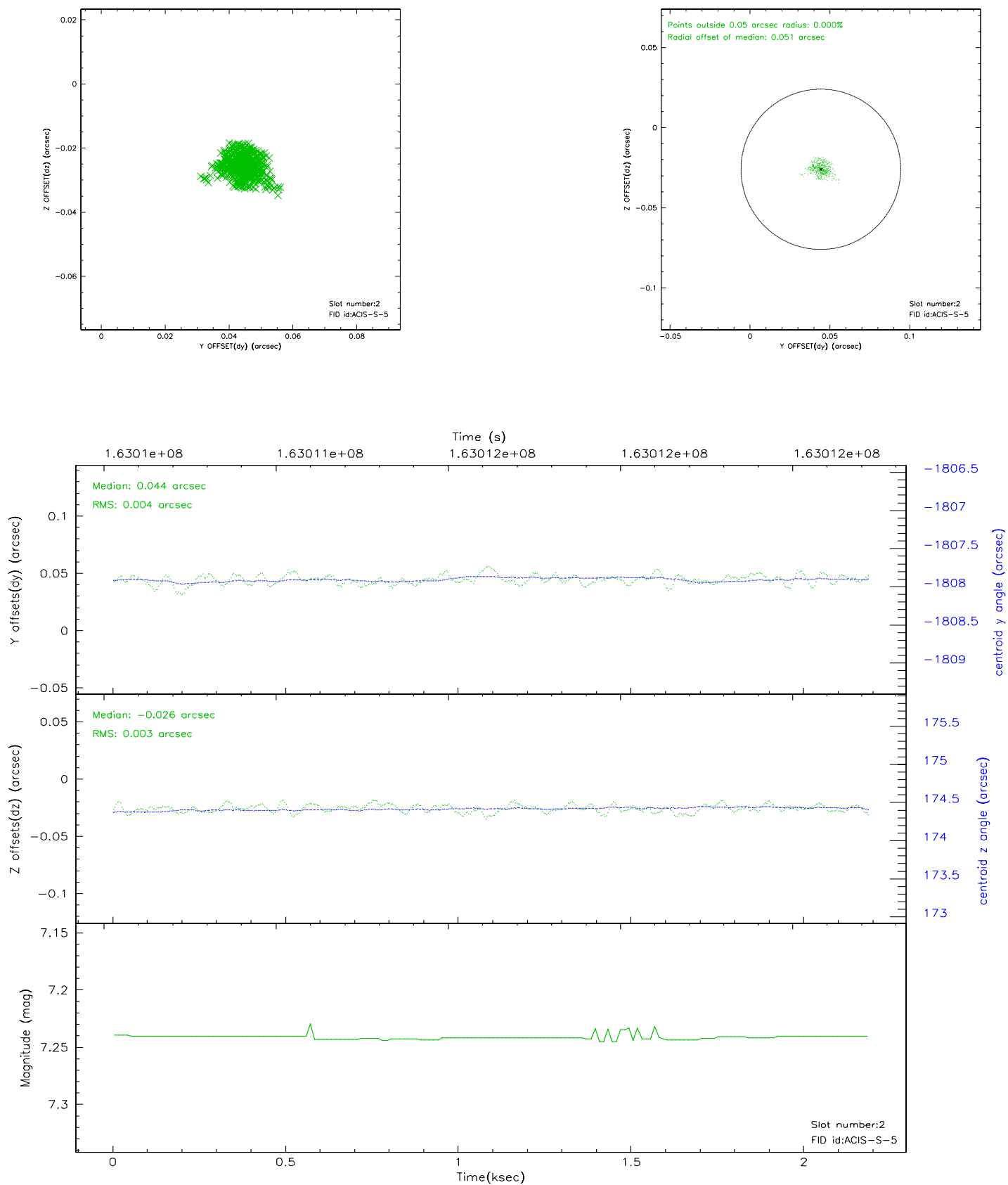
### 2.5.1 Slot 0



## 2.5.2 Slot 1



### 2.5.3 Slot 2





### 3 Point Sources

4.29 arcmin



## A Summary

### A.1 Status

V&V Scientist	Joy Nichols
V&V Date (YYYY-MM-DD)	2006.07.24
V&V Edition	2
V&V Disposition and Status	OK
V&V Charge Time	2

### A.2 Comments

Charge time for this ObsId remains at original value of 2.0 ks,  
although  
with the current processing the charge time would have been 1.7536 ksec.