

V&V Reference Report

L2 ASCDS Version : 7.6.8

Observation 3939 - L2 Version 001
Chandra X-Ray Center

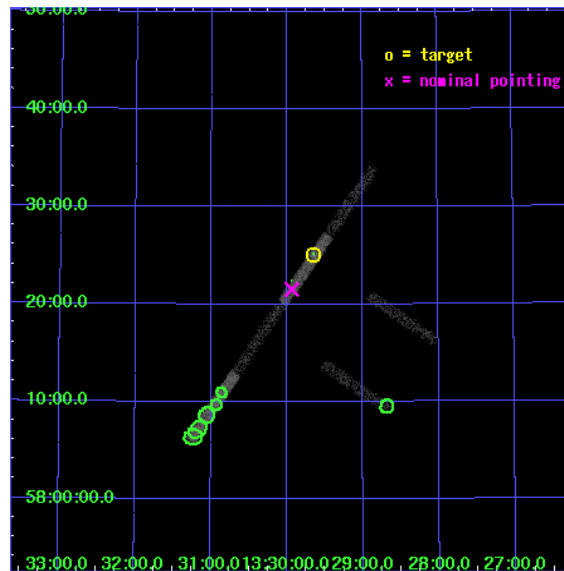
L2 Processing Date : Jul 7 2006

Contents

1	Front	2
2	OBI	3
2.1	OBI	3
2.1.1	Images	3
2.1.2	Bias	3
2.1.3	Parameters	4
2.1.4	Events	4
2.2	Compared Parameters	5
2.3	Aspect	6
2.4	Star Slots	9
2.4.1	Slot 3	9
2.4.2	Slot 4	10
2.4.3	Slot 5	11
2.4.4	Slot 6	12
2.4.5	Slot 7	13
2.5	FID Slots	14
2.5.1	Slot 0	14
2.5.2	Slot 1	15
2.5.3	Slot 2	16
3	Point Sources	17
A	Summary	18
A.1	Status	18
A.2	Comments	18

1 Front

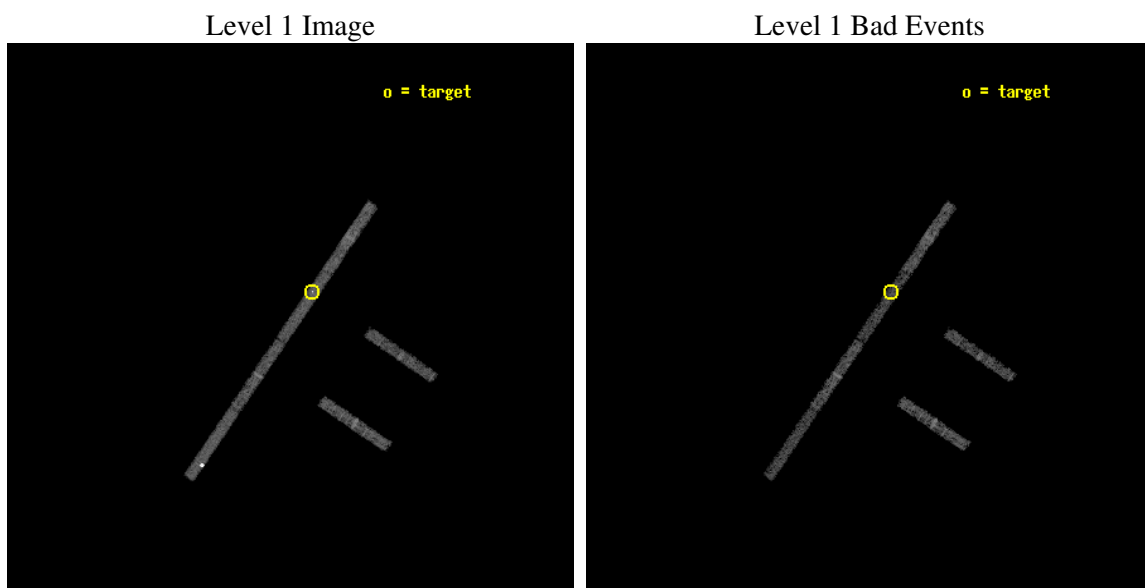
seq_num	600313
obs_id	3939
title	PROBING THE SPECTRAL VARIABILITY OF THE ULTRALUMINOUS X-RAY SOURCE NGC 5204 X-1
observer	Dr Timothy Roberts
object	NGC 5204 X-1
dtcycle	0
cycle	P
ra_targ	202.410833
dec_targ	58.418333
ra_nom	202.48383983816
dec_nom	58.358912263621
roll_nom	304.23739060302
revision	3
ontime	5443.8999072909
livetime	5142.4078796066
ontime2	5443.8999072909
ontime3	5443.8999072909
ontime5	5443.8999072909
ontime6	5443.8999072909
ontime7	5443.8999072909
ontime8	5443.8999072909
l2events	8561



2 OBI

2.1 OBI

2.1.1 Images



2.1.2 Bias

Chip 2

Chip 3

Chip 5



Chip 6

Chip 7

Chip 8



2.1.3 Parameters

obi_num	0
ascdsver	7.6.8
caldsver	3.2.2
date	2006-07-07T16:52:46
revision	3

sched_exp_time	4932.000000
ontime	5445.8363330364
ontime2	5445.8363330364
ontime3	5445.8363330364
ontime5	5445.8363330364
ontime6	5445.8363330364
ontime7	5445.8363330364
ontime8	5445.8363330364
l1events	48233

2.1.4 Events

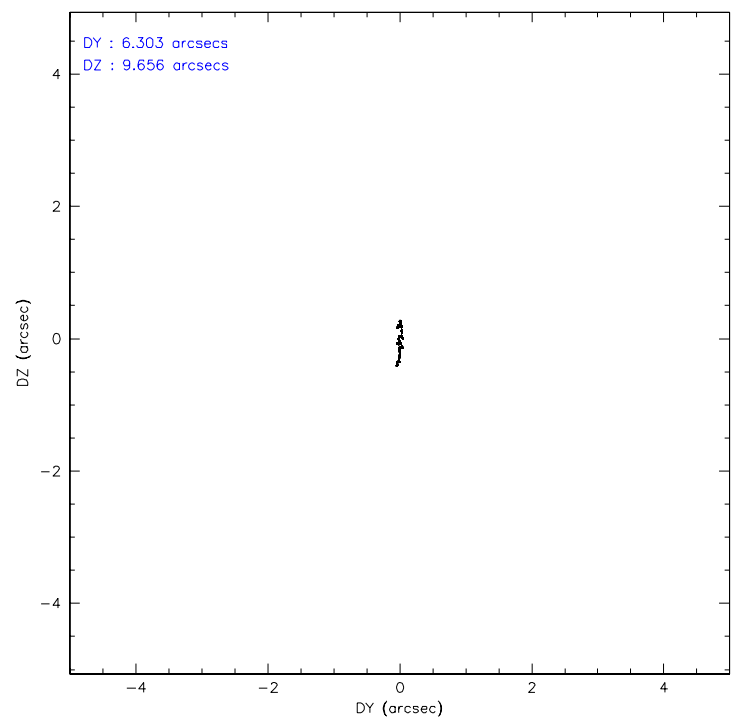
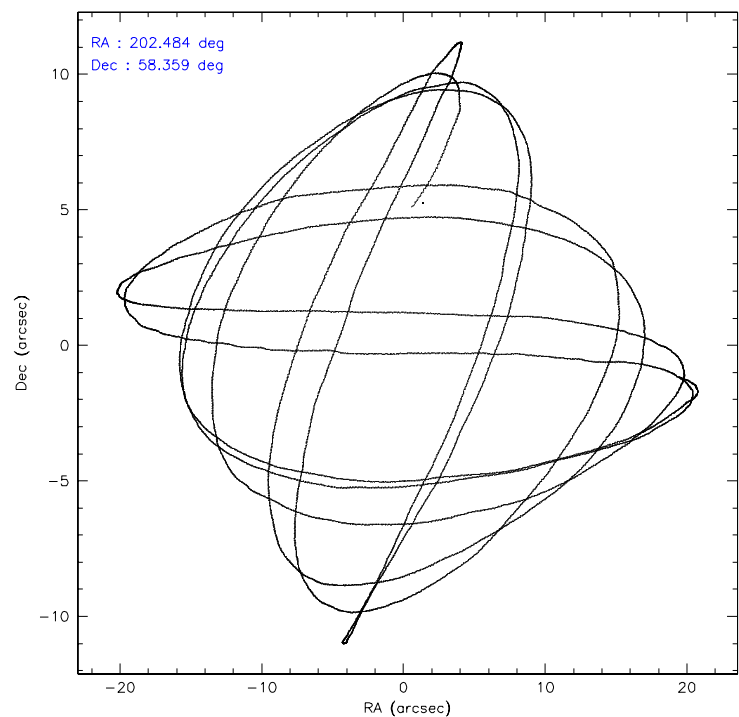
	ccd 2	ccd 3	ccd 5	ccd 6	ccd 7	ccd 8
level 1 events	6889	5452	14071	6441	7306	8074
rejected events	6183	4800	3875	5755	3872	6766
rejected %	89%	88%	27%	89%	52%	83%

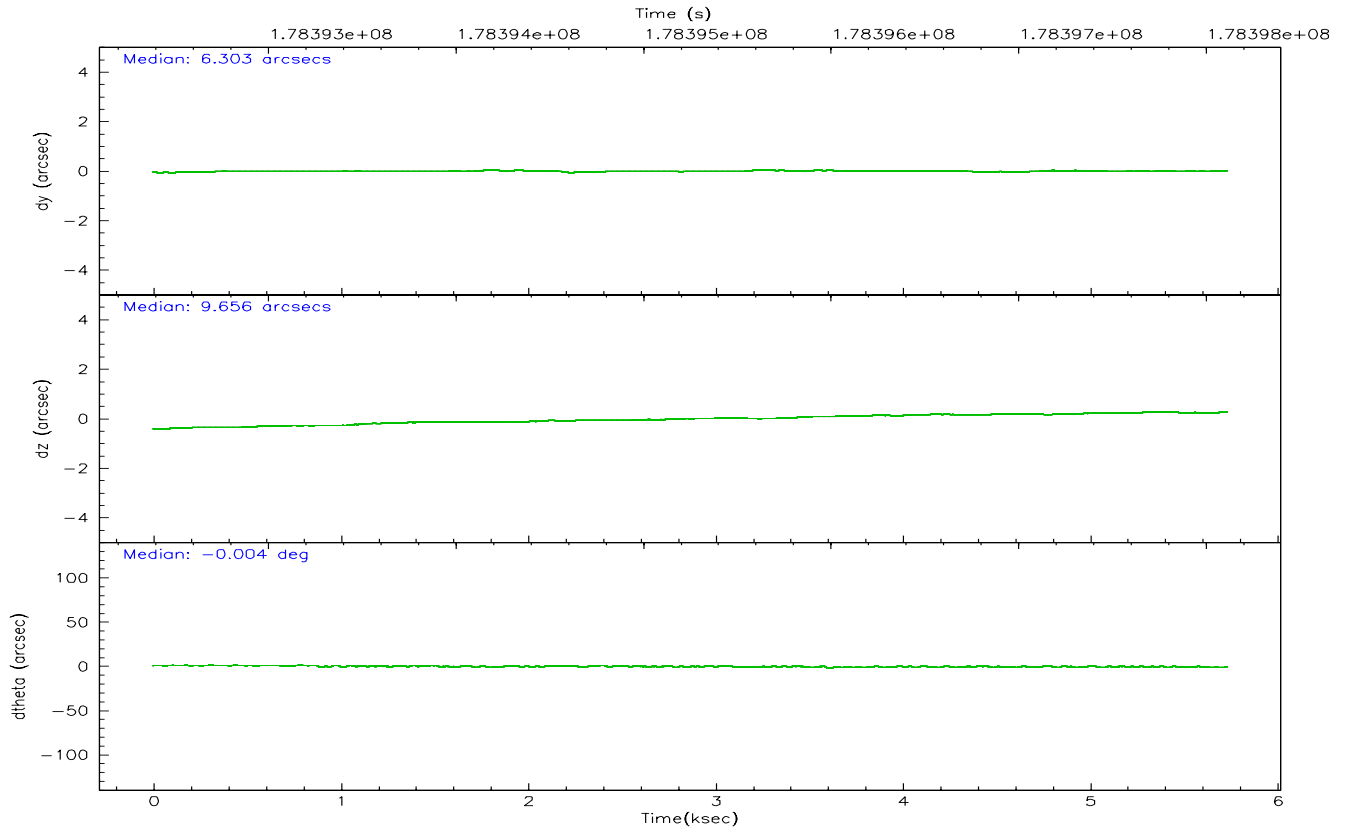
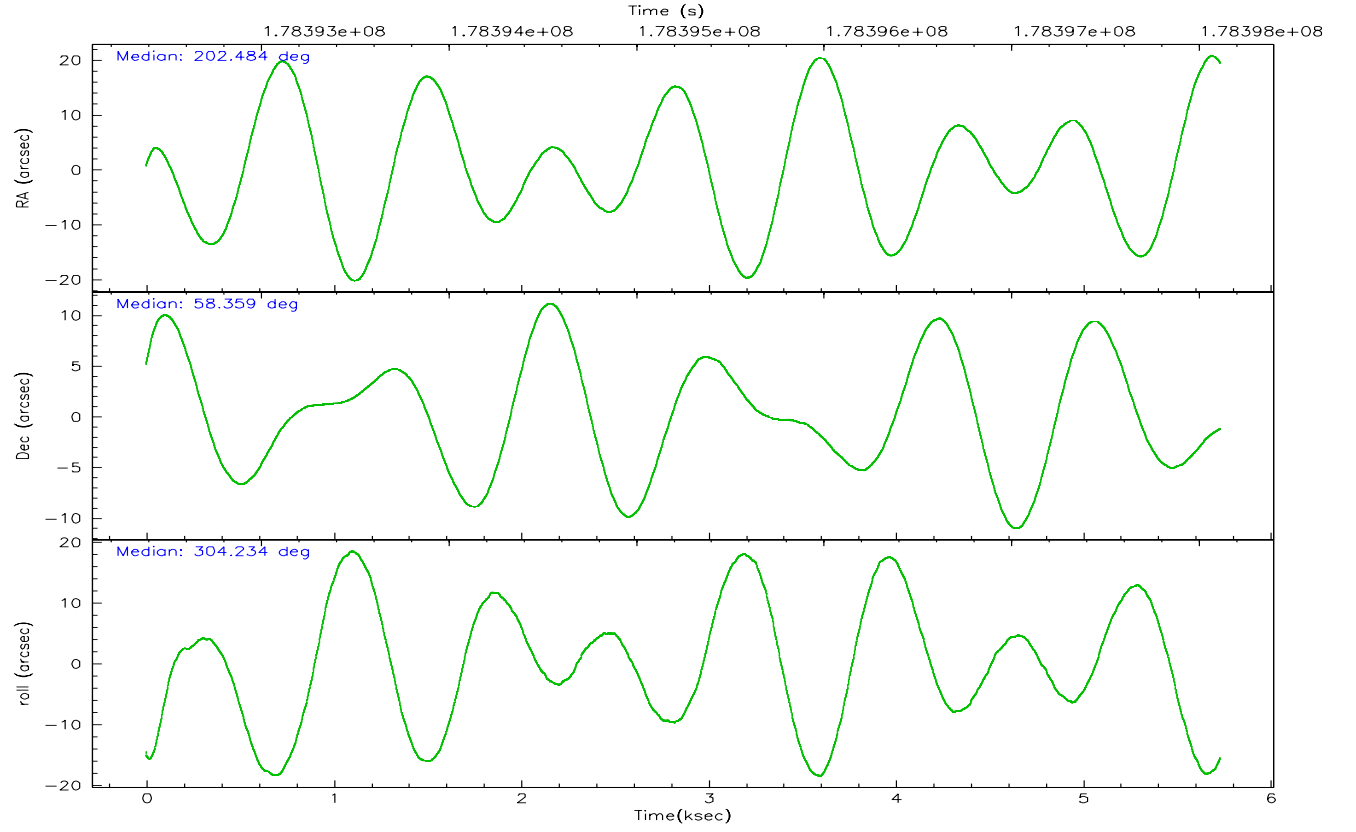
	ccd 2	ccd 3	ccd 5	ccd 6	ccd 7	ccd 8
grade 0 events	240	252	5257	259	457	366
	3%	4%	37%	4%	6%	4%
grade 1 events	1	1	17	0	5	3
	0%	0%	0%	0%	0%	0%
grade 2 events	125	90	2799	100	843	267
	1%	1%	19%	1%	11%	3%
grade 3 events	106	118	139	104	298	156
	1%	2%	0%	1%	4%	1%
grade 4 events	132	86	241	100	294	144
	1%	1%	1%	1%	4%	1%
grade 5 events	186	176	347	222	464	251
	2%	3%	2%	3%	6%	3%
grade 6 events	104	107	1763	123	1544	376
	1%	1%	12%	1%	21%	4%
grade 7 events	5995	4622	3508	5533	3401	6511
	87%	84%	24%	85%	46%	80%

2.2 Compared Parameters

Parameter	Planned	Actual	Parameter	Planned	Actual
Instrument	ACIS	ACIS	Obspar format version number	6	6
Detector	ACIS-235678	ACIS-235678	Obspar file type	PREDICTED	ACTUAL
Grating	NONE	NONE	Obspar update status	NONE	UPDATED
Data mode	FAINT	FAINT	On-chip summing requested	N	N
Observation mode	POINTING	POINTING	Subarray requested	1/8	1/8
Pointing RA	202.436770	202.4838398381609	Subarray start row	0	449
Pointing Dec	58.370351	58.35891226362077	Subarray row count	1024	128
Pointing Roll	304.120865	304.2373906030185	Alternating exposures requested	N	N
SIM focus pos (mm)	-0.684267	-0.6828225247311905	Primary exposure time	0.000000	0.7
SIM defocus (mm)	0	0.001444936568705701			
SIM translation stage pos (mm)	-190.132523	-190.1400660498719			
SIM translation stage offset (mm)	0	0.00754346686406393			
Observation start time	178393182.184000	178391910.21467			
Observation start date	2003-08-27T17:38:38	2003-08-27T17:18:30			
Observation end time	178398114.184000	178398662.40246			
Observation end date	2003-08-27T19:00:50	2003-08-27T19:11:02			
Read mode	TIMED	TIMED			

2.3 Aspect



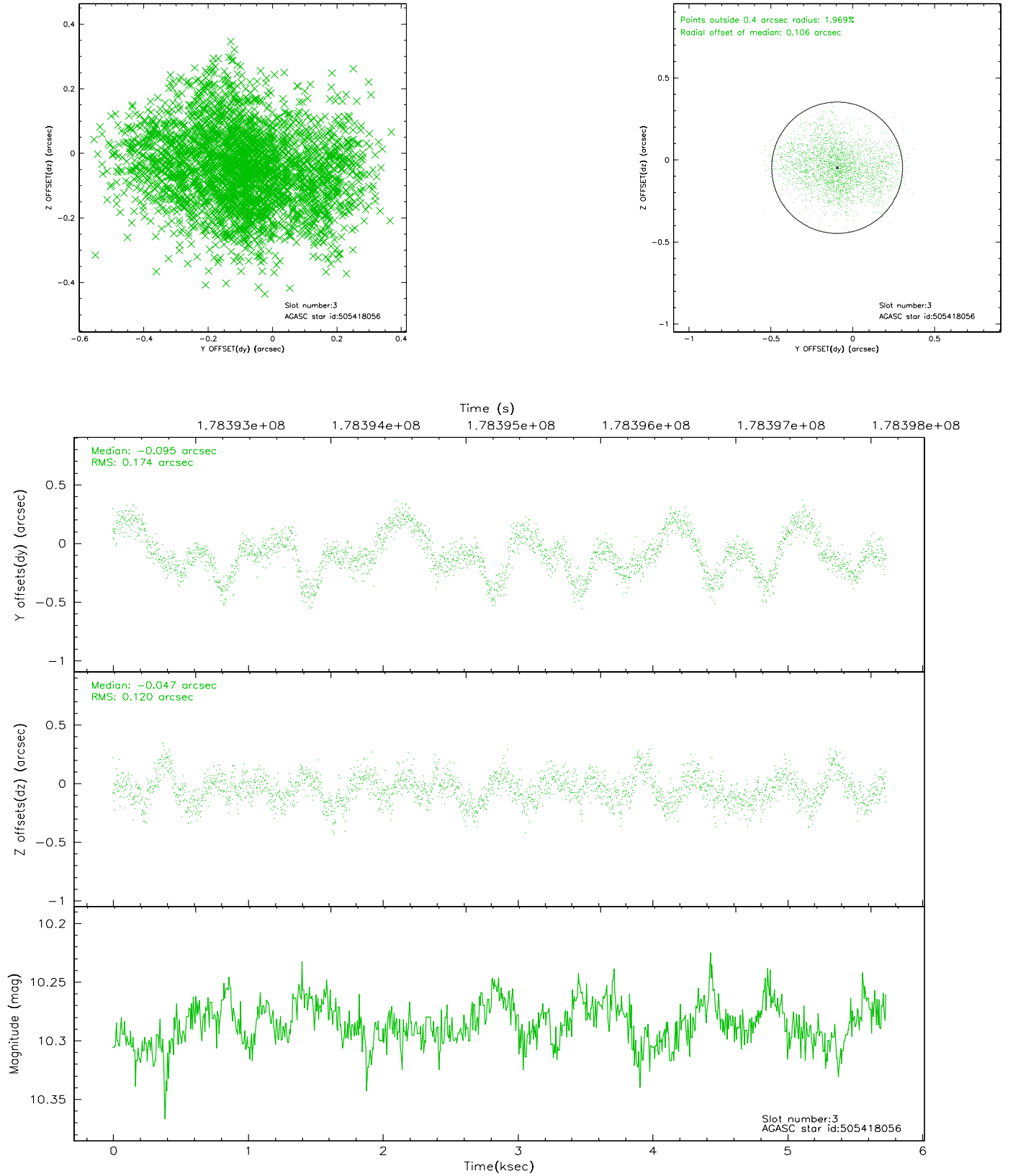


Slot Statistics

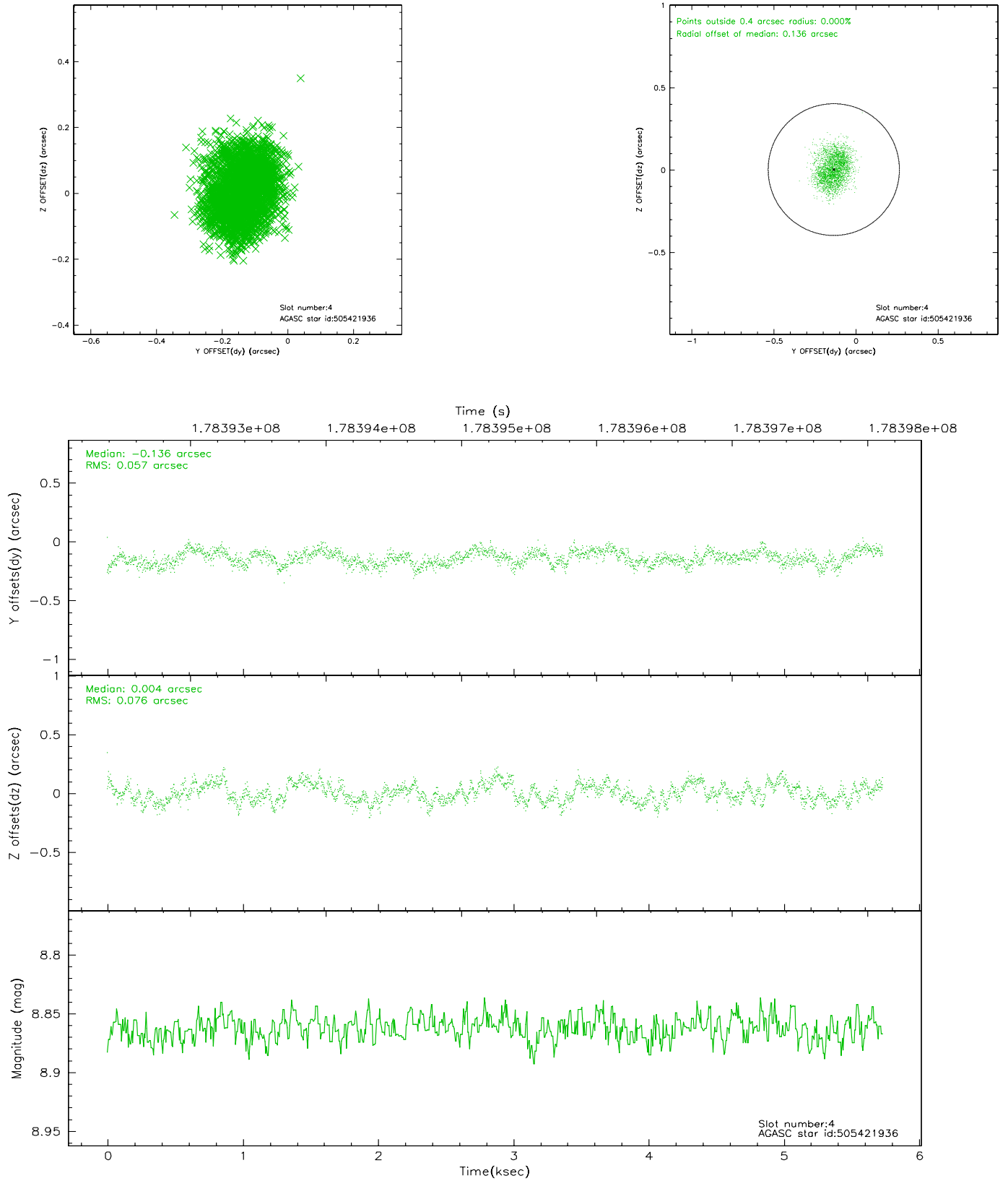
slot	status	id	mag	n_pts	med_dy	med_dz	dr1	dr2	ra	dec	mean_y	mean_z
0	FID	ACIS-S-2	7.10	1400	-0.041	-0.014	0.006	0.010	0.000000	0.000000	-759.07	-1730.89
1	FID	ACIS-S-4	7.20	1399	0.024	0.031	0.006	0.010	0.000000	0.000000	2153.79	176.57
2	FID	ACIS-S-6	7.35	1399	-0.010	-0.009	0.007	0.012	0.000000	0.000000	404.27	815.10
3	GUIDE	505418056	10.29	2793	-0.095	-0.047	0.232	0.359	201.348041	58.344804	-1090.93	-1745.00
4	GUIDE	505421936	8.86	2797	-0.136	0.004	0.102	0.156	201.854843	57.887820	809.53	-1894.06
5	GUIDE	505422344	8.62	2797	0.010	0.033	0.088	0.134	202.767077	57.846963	1914.47	-532.54
6	GUIDE	505419736	10.70	2798	0.157	0.086	0.275	0.441	201.540610	58.189000	-421.28	-1767.66
7	GUIDE	505422504	10.08	2795	0.068	-0.058	0.137	0.225	202.156173	59.054723	-2331.54	951.97

2.4 Star Slots

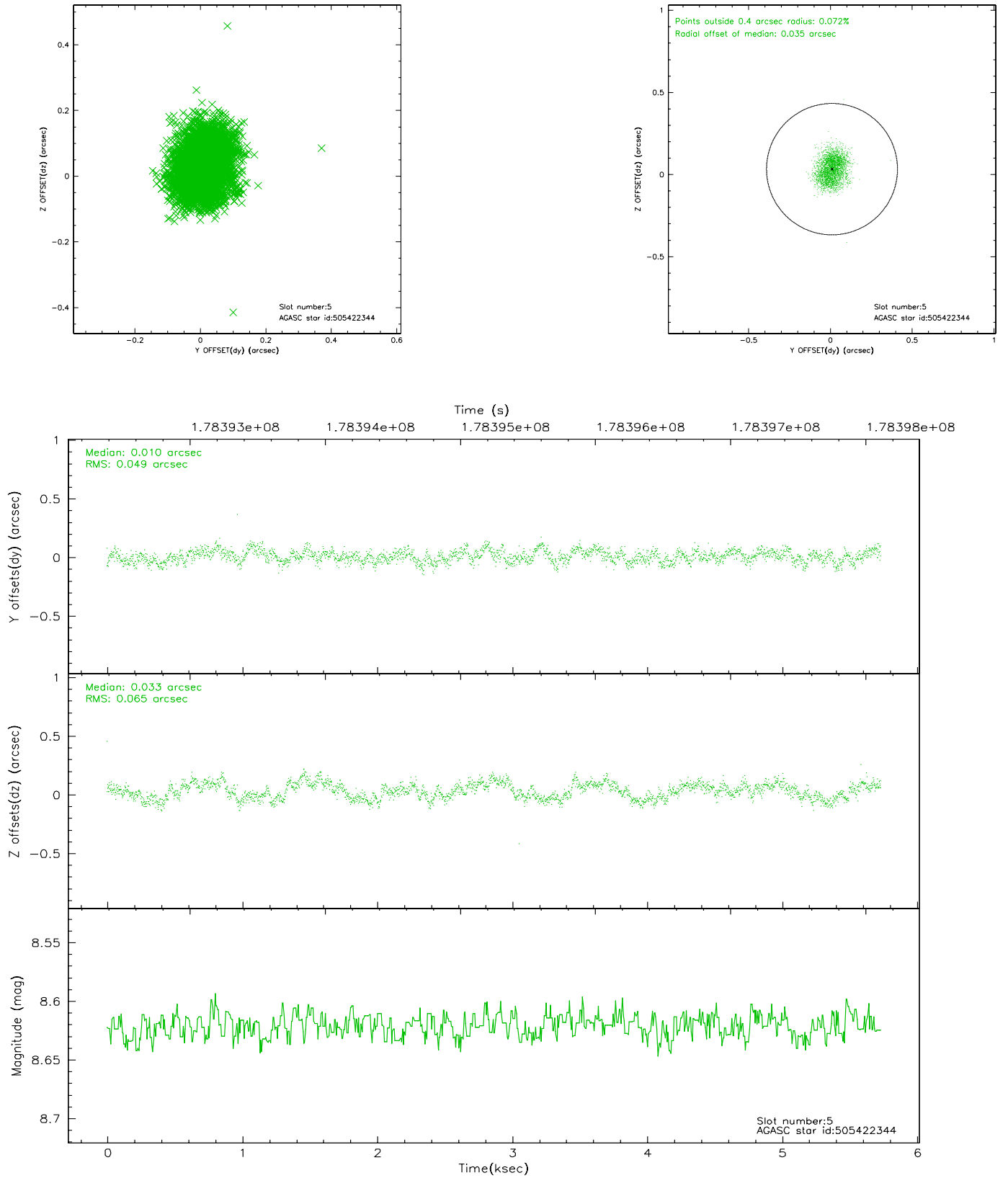
2.4.1 Slot 3



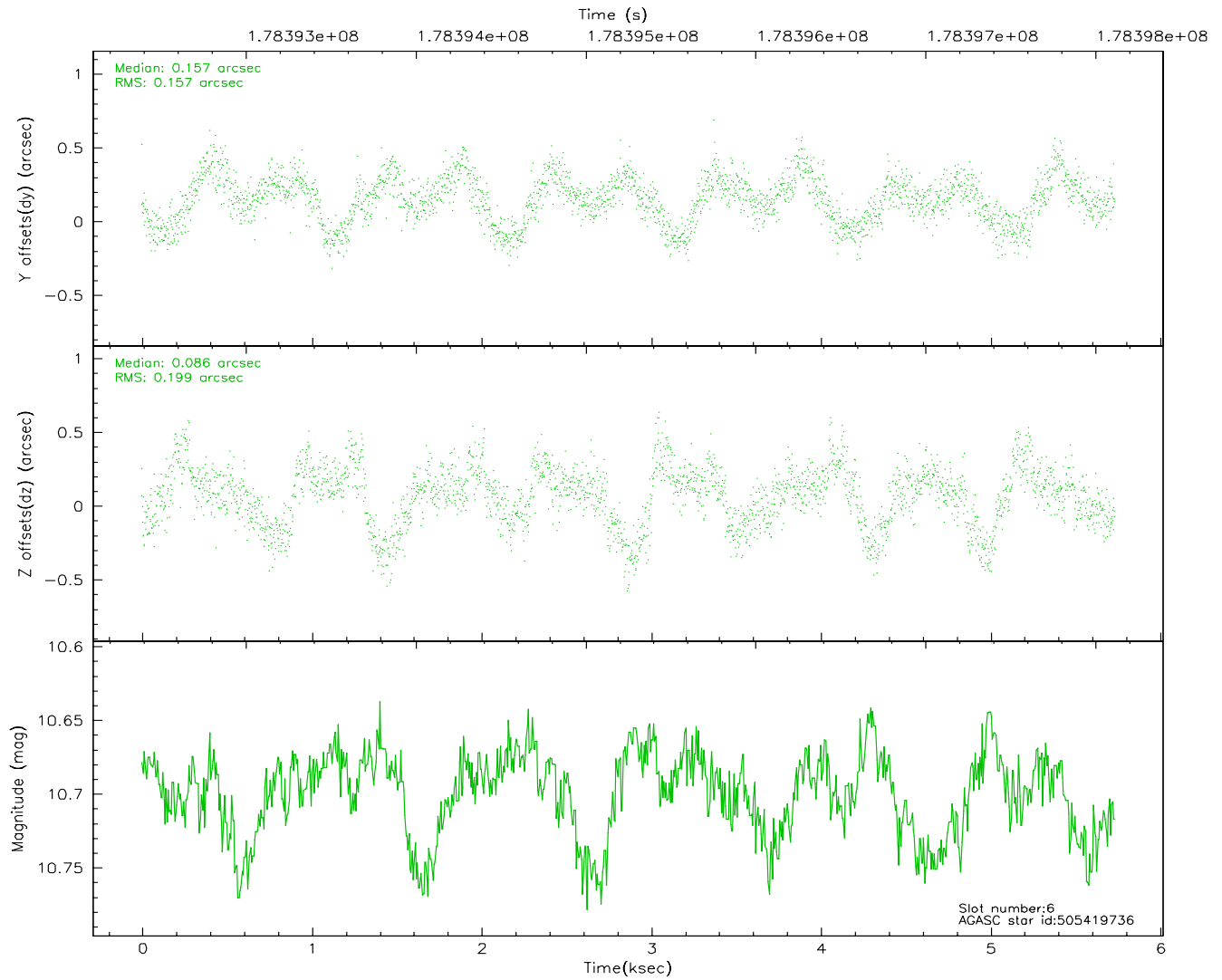
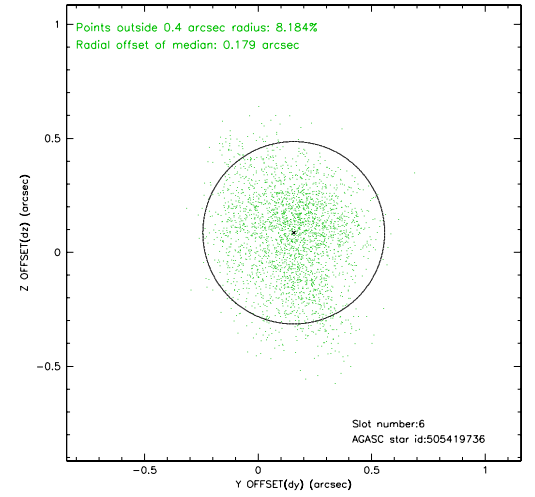
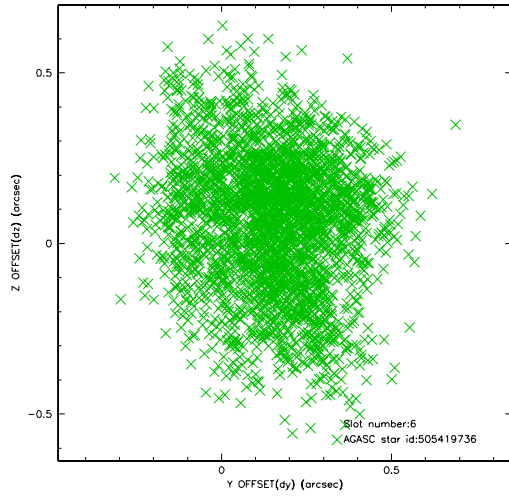
2.4.2 Slot 4



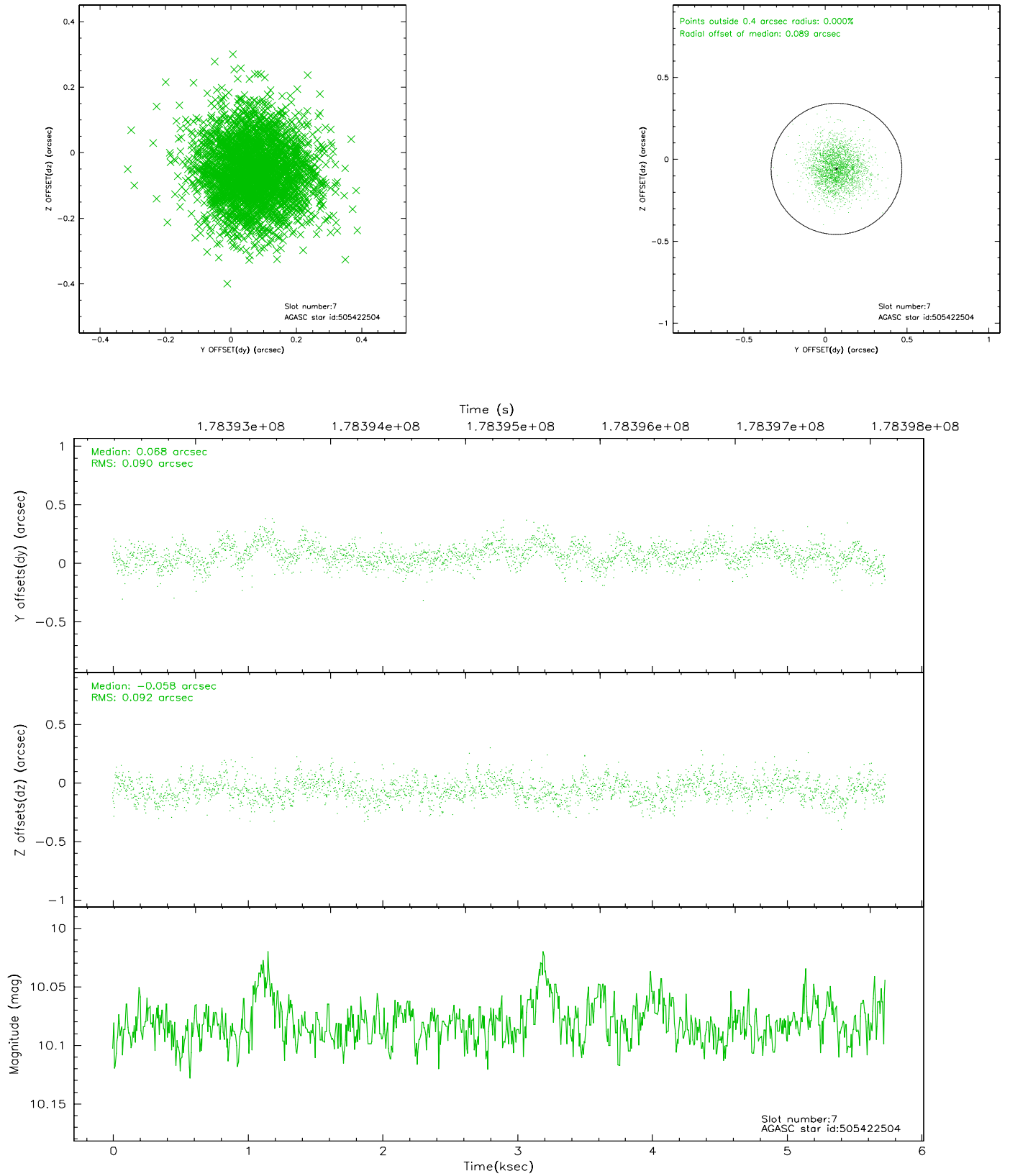
2.4.3 Slot 5



2.4.4 Slot 6

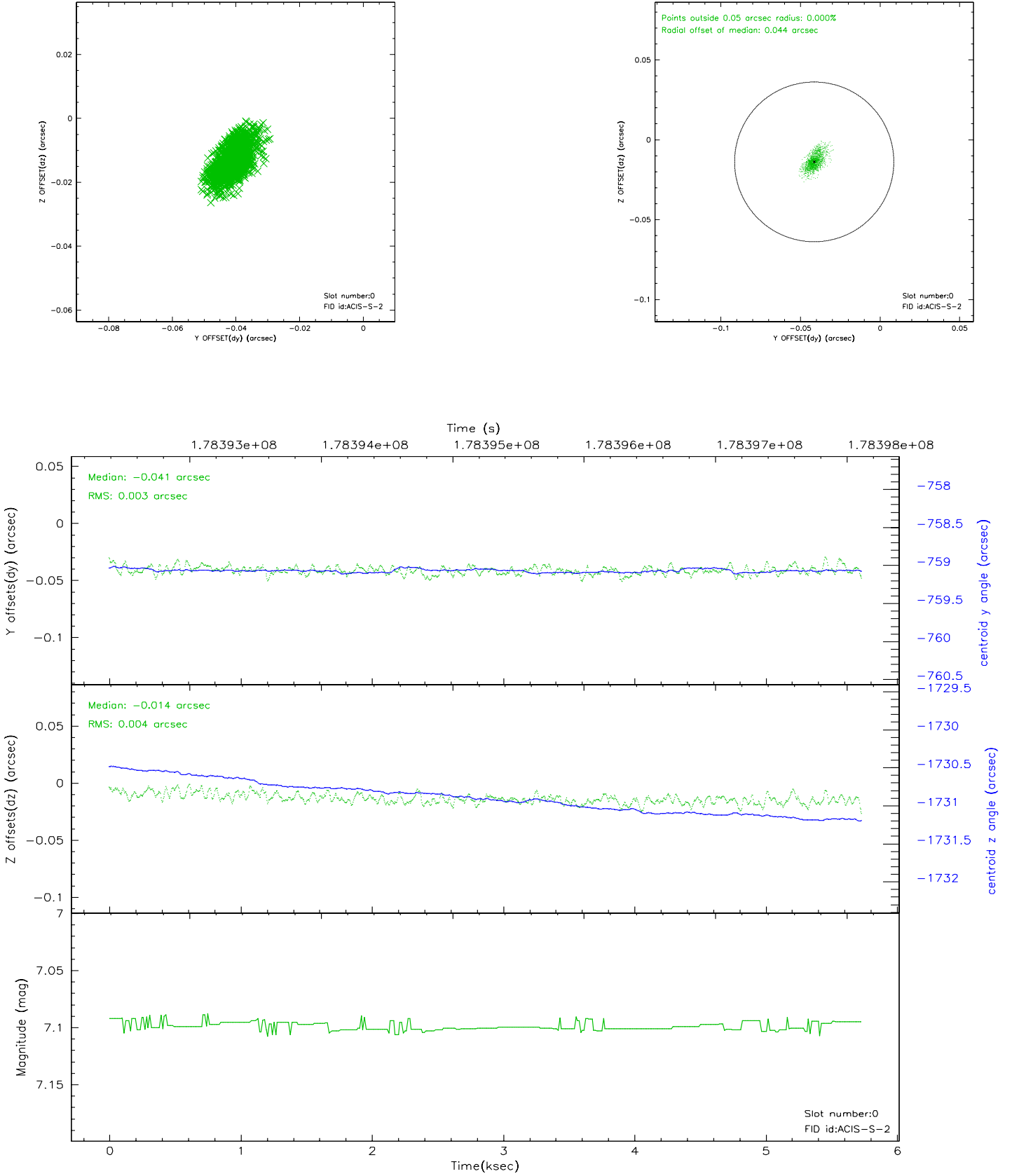


2.4.5 Slot 7

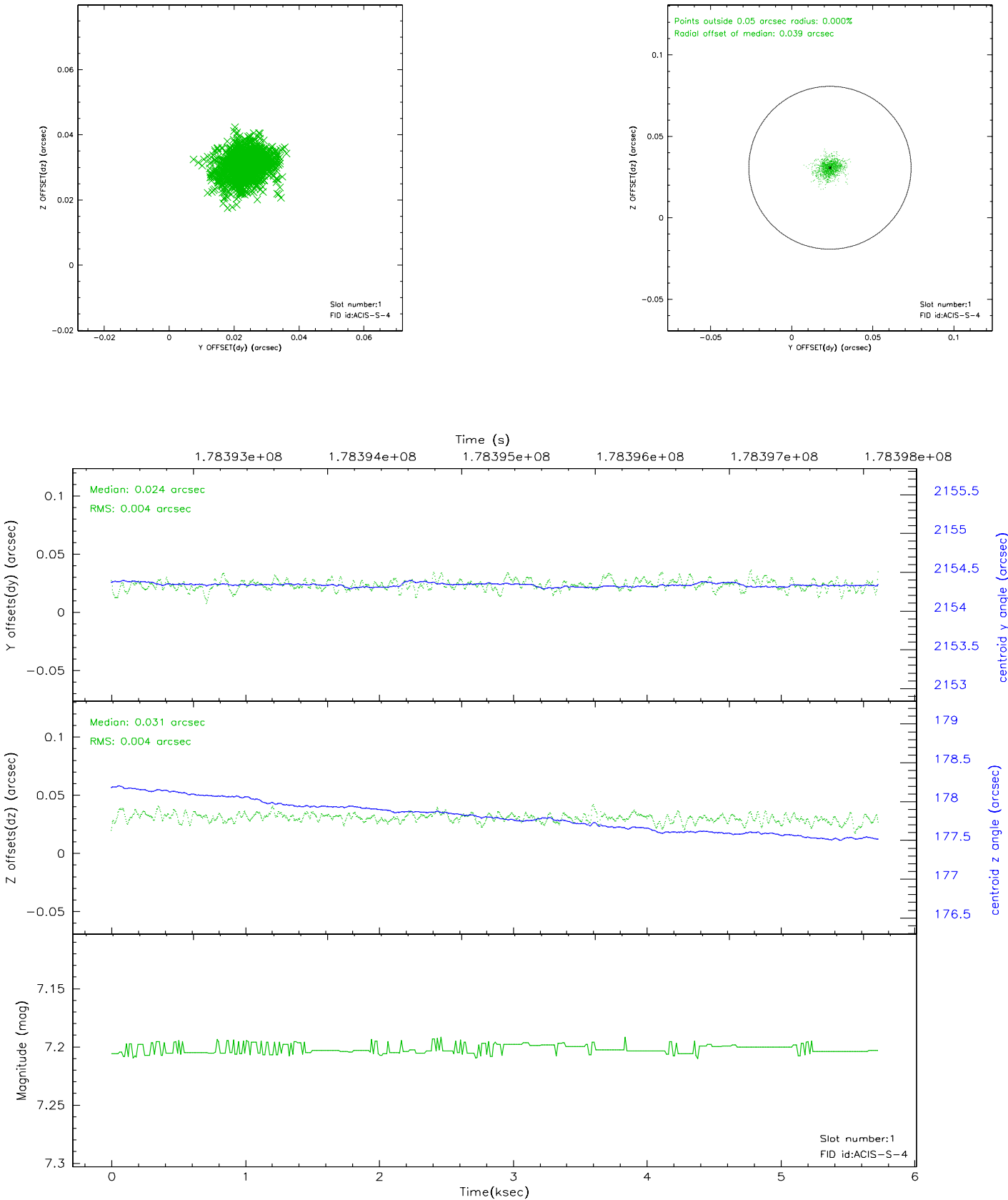


2.5 FID Slots

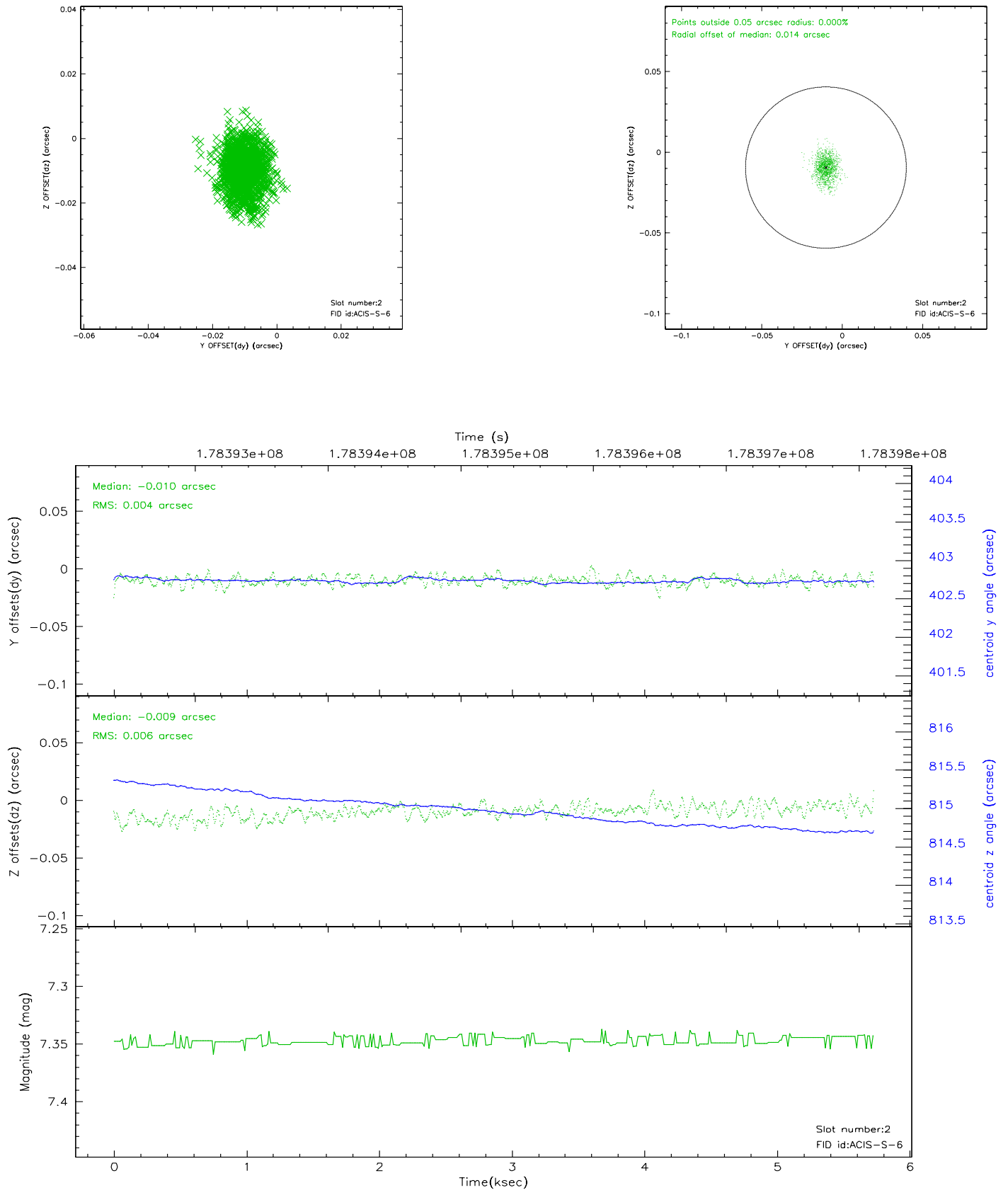
2.5.1 Slot 0



2.5.2 Slot 1

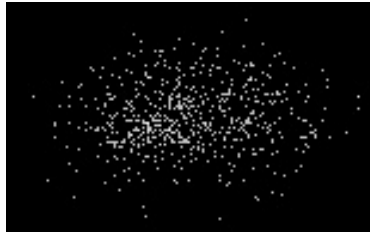


2.5.3 Slot 2

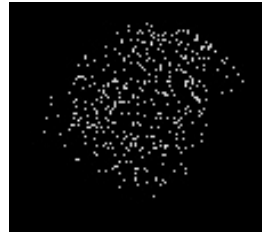


3 Point Sources

4.23 arcmin



18.31 arcmin



A Summary

A.1 Status

V&V Scientist	Beth Sundheim
V&V Date (YYYY-MM-DD)	2006.07.07
V&V Edition	1
V&V Disposition and Status	OK
V&V Charge Time	5.444

A.2 Comments