

V&V Reference Report

L2 ASCDS Version : 8.4.5

Observation 3579 - L2 Version 3
Chandra X-Ray Center

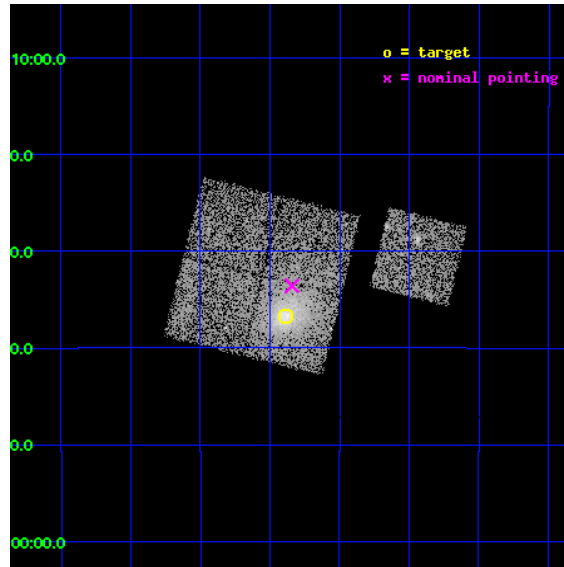
L2 Processing Date : Nov 1 2012

Contents

1	Front	2
2	OBI	3
2.1	OBI	3
2.1.1	Images	3
2.1.2	Bias	3
2.1.3	Parameters	4
2.1.4	Events	4
2.2	Compared Parameters	5
2.3	Aspect	6
2.4	Star Slots	9
2.4.1	Slot 3	9
2.4.2	Slot 4	10
2.4.3	Slot 5	11
2.4.4	Slot 6	12
2.4.5	Slot 7	13
2.5	FID Slots	14
2.5.1	Slot 0	14
2.5.2	Slot 1	15
2.5.3	Slot 2	16
A	Summary	17
A.1	Status	17
A.2	Comments	17

1 Front

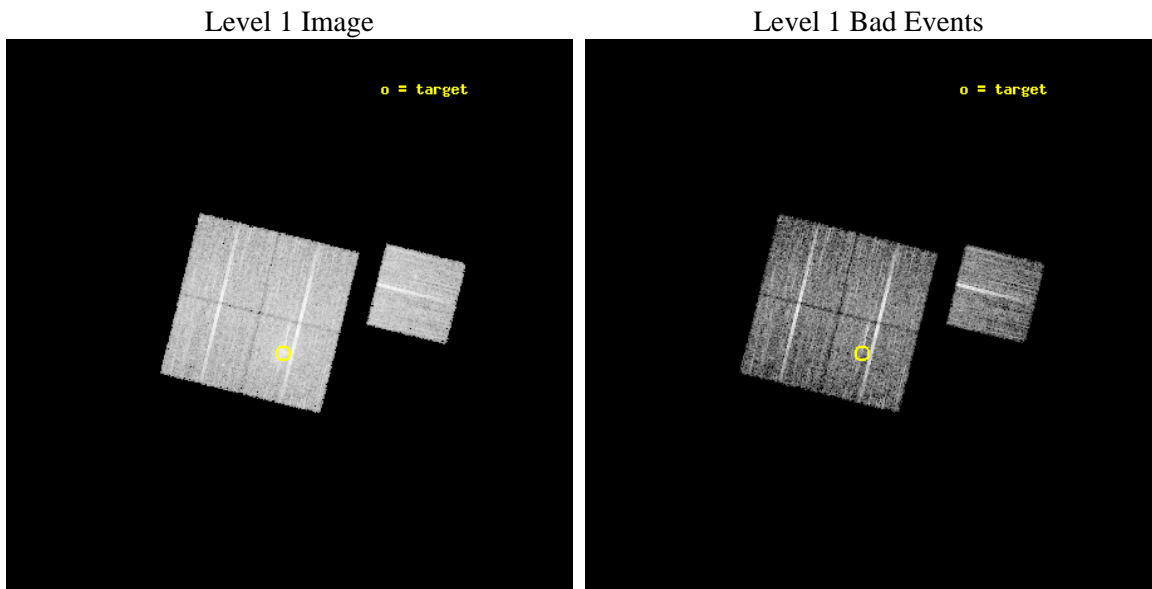
seq_num	800300	Sequence number
obs_id	3579	Observation id
title	X-RAY/SZ DETERMINATION OF COSMOLOGICAL PARAMETERS	Proposal title
observer	DR. LEON VANSPEYBROECK	Principal investigator
object	A209	Source name
dtcycle	0	
cycle	P	events from which exps? Prim/Second/Both
ra_targ	22.972083	Observer's specified target RA [deg]
dec_targ	-13.613	Observer's specified target Dec [deg]
ra_nom	22.960650438565	Nominal RA [deg]
dec_nom	-13.559840846588	Nominal Dec [deg]
roll_nom	103.85708385139	Nominal Roll [deg]
revision	3	Processing version of data
ontime	10117.216346473	Sum of GTIs [s]
livetime	9985.0274667195	Livetime [s]
ontime0	10117.093226463	Sum of GTIs [s]
ontime1	10117.134266466	Sum of GTIs [s]
ontime2	10114.034356147	Sum of GTIs [s]
ontime3	10117.216346473	Sum of GTIs [s]
ontime6	10117.052186459	Sum of GTIs [s]
l2events	32293	Number of level 2 events



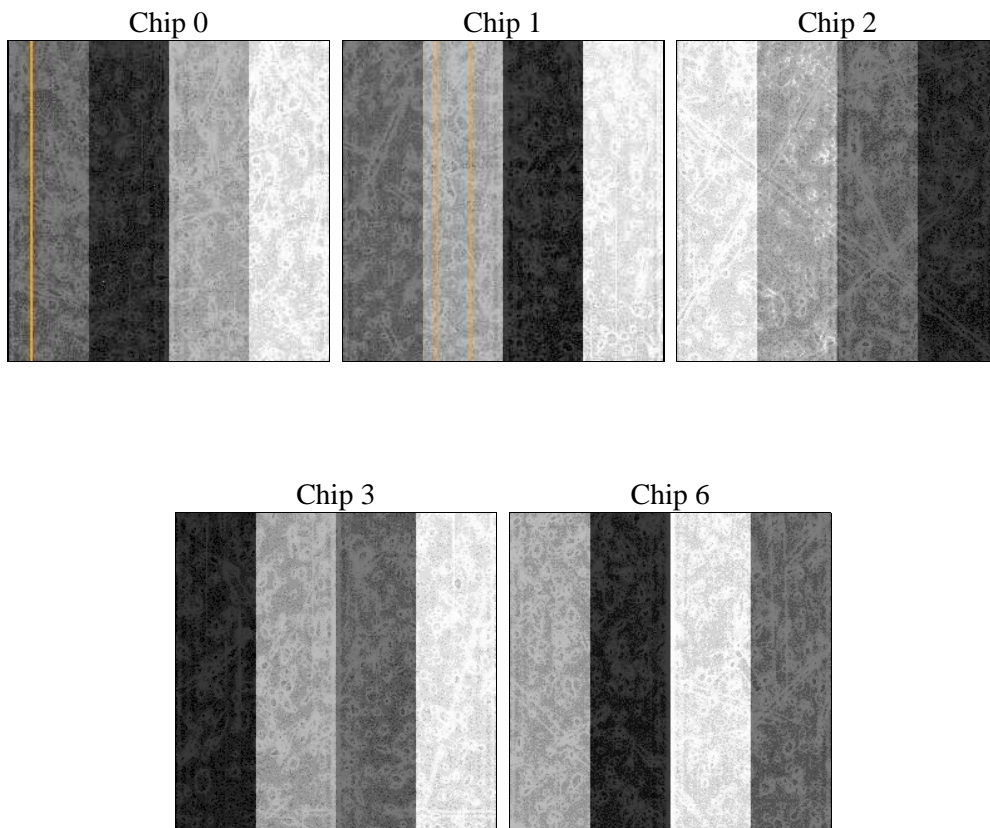
2 OBI

2.1 OBI

2.1.1 Images



2.1.2 Bias



2.1.3 Parameters

obi_num	1	Obi number	sched_exp_time	10000.000000	[s] Scheduled observation exposure time
ascdsver	8.4.5	Processing system revision	ontime	10117.216346473	Sum of GTIs [s]
caldbver	4.5.2	 	ontime0	10117.093226463	Sum of GTIs [s]
date	2012-11-01T10:35:57	Date and time of file creation	ontime1	10117.134266466	Sum of GTIs [s]
revision	3	Processing version of data	ontime2	10114.034356147	Sum of GTIs [s]
			ontime3	10117.216346473	Sum of GTIs [s]
			ontime6	10117.052186459	Sum of GTIs [s]
			l1events	260688	Number of level 1 events

2.1.4 Events

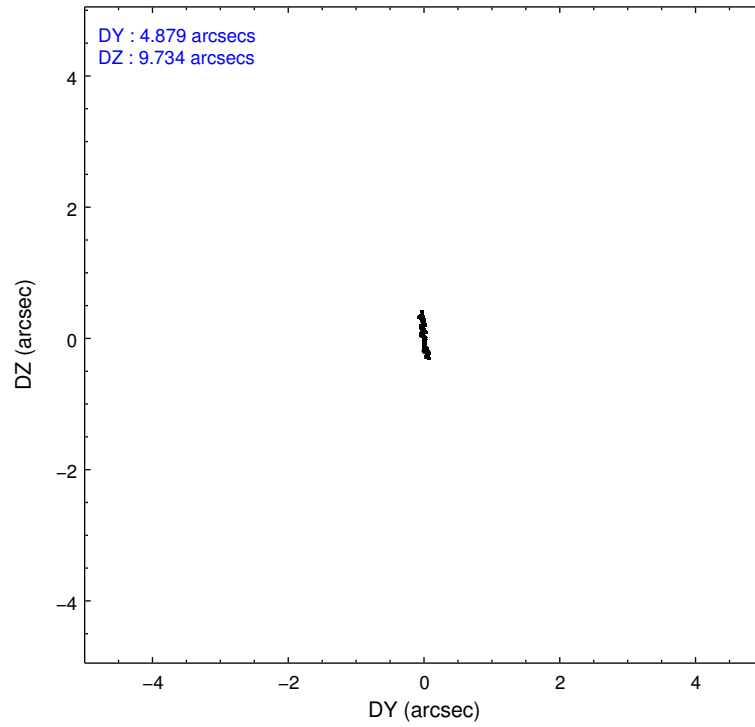
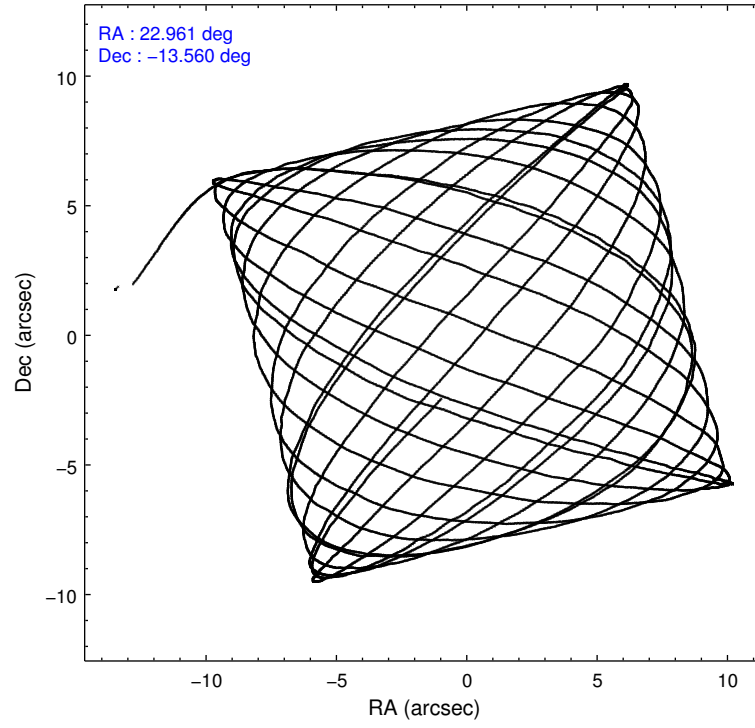
	ccd 0	ccd 1	ccd 2	ccd 3	ccd 6
level 1 events	47996	46822	54380	59290	52200
rejected events	42776	40656	48370	45040	46614
rejected %	89%	86%	88%	75%	89%

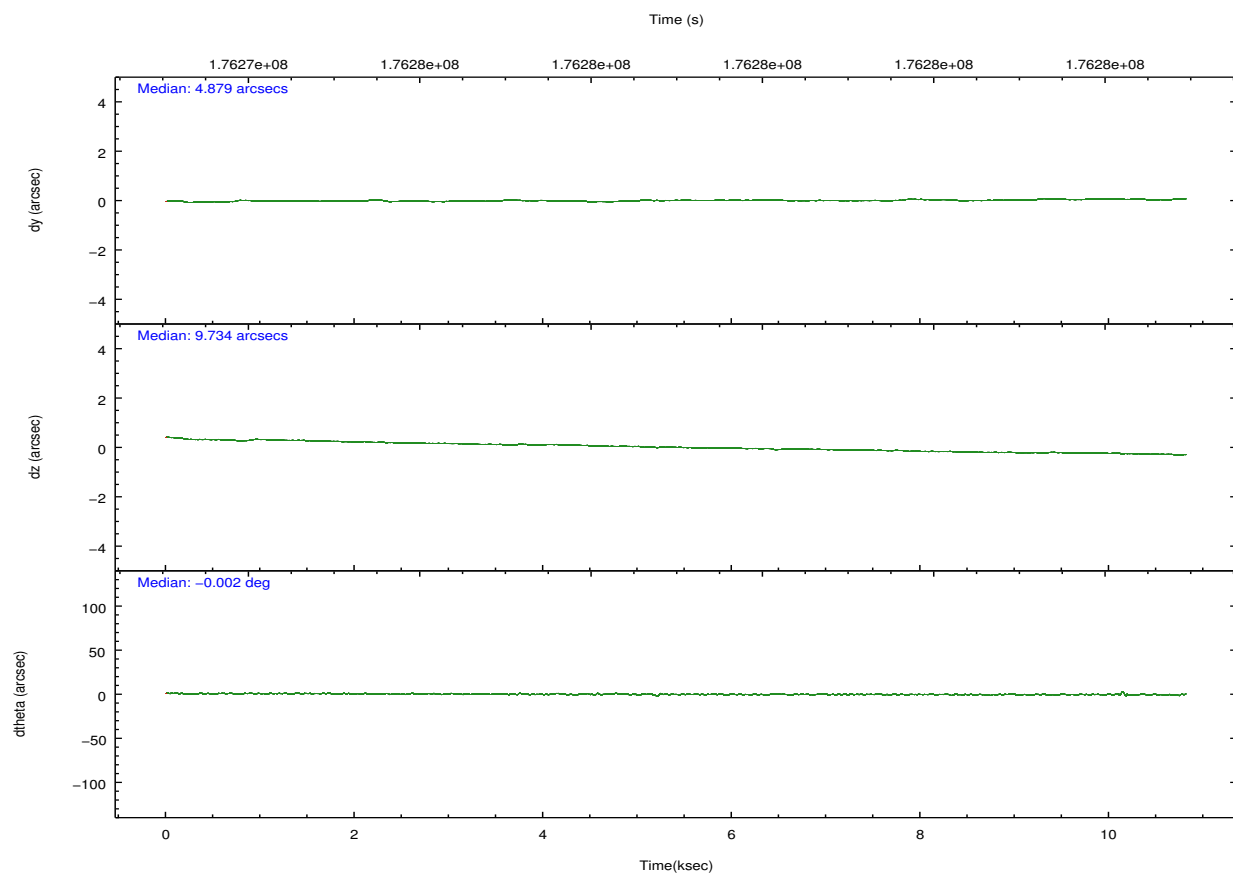
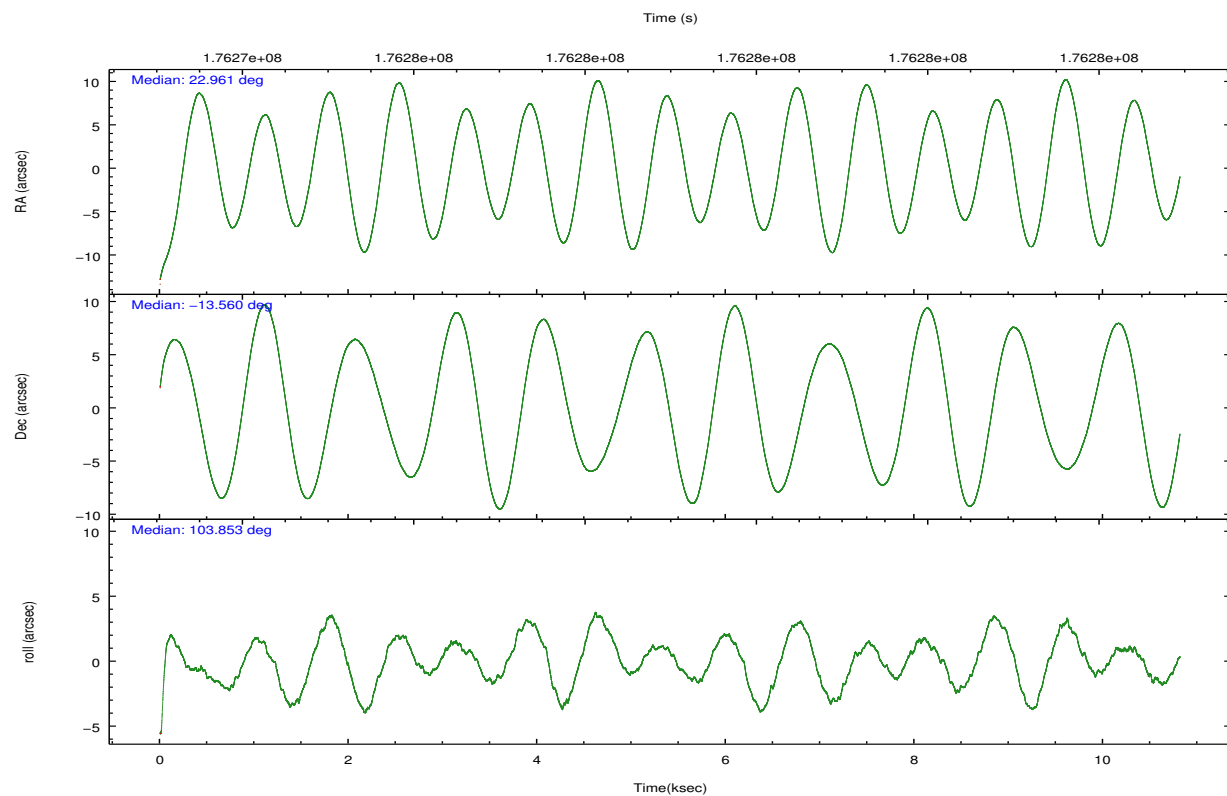
	ccd 0	ccd 1	ccd 2	ccd 3	ccd 6
grade 0 events	1885	2344	2582	9353	2023
	3%	5%	4%	15%	3%
grade 1 events	23	16	26	75	17
	0%	0%	0%	0%	0%
grade 2 events	1166	1253	1274	1999	1198
	2%	2%	2%	3%	2%
grade 3 events	585	718	585	859	617
	1%	1%	1%	1%	1%
grade 4 events	596	664	601	853	624
	1%	1%	1%	1%	1%
grade 5 events	1778	1982	1714	2101	1999
	3%	4%	3%	3%	3%
grade 6 events	994	1192	973	1196	1128
	2%	2%	1%	2%	2%
grade 7 events	40969	38653	46625	42854	44594
	85%	82%	85%	72%	85%

2.2 Compared Parameters

Parameter	Planned	Actual	Parameter	Planned	Actual
Instrument	ACIS	ACIS	Obspar format version number	7	7
Detector	ACIS-01236	ACIS-01236	Obspar file type	PREDICTED	ACTUAL
Grating	NONE	NONE	Obspar update status	NONE	UPDATED
Data mode	VFAINT	VFAINT	Number of optional ACIS chips dropped	0	0
Observation mode	POINTING	POINTING	On-chip summing requested	N	N
[deg] Pointing RA	22.980302	22.96065043856468	Subarray requested	NONE	NONE
[deg] Pointing Dec	-13.579507	-13.559840846588	Alternating exposures requested	N	N
[deg] Pointing Roll	103.653016	103.857083851389	[s] Primary exposure time	0.000000	3.1
[mm] SIM focus pos	-0.782348	-0.7809083437167272			
[mm] SIM defocus	0	0.001439871863259334			
[mm] SIM translation stage pos	-225.840463	-225.8458576473255			
[mm] SIM translation stage offset	-7.752	-7.746595355604228			
[s] Observation start time (MET)	176274405.184000	176273130.06159			
Observation start date	2003-08-03T05:05:41	2003-08-03T04:45:30			
[s] Observation end time (MET)	176284405.184000	176284758.17459			
Observation end date	2003-08-03T07:52:21	2003-08-03T07:59:18			
Read mode	TIMED	TIMED			

2.3 Aspect



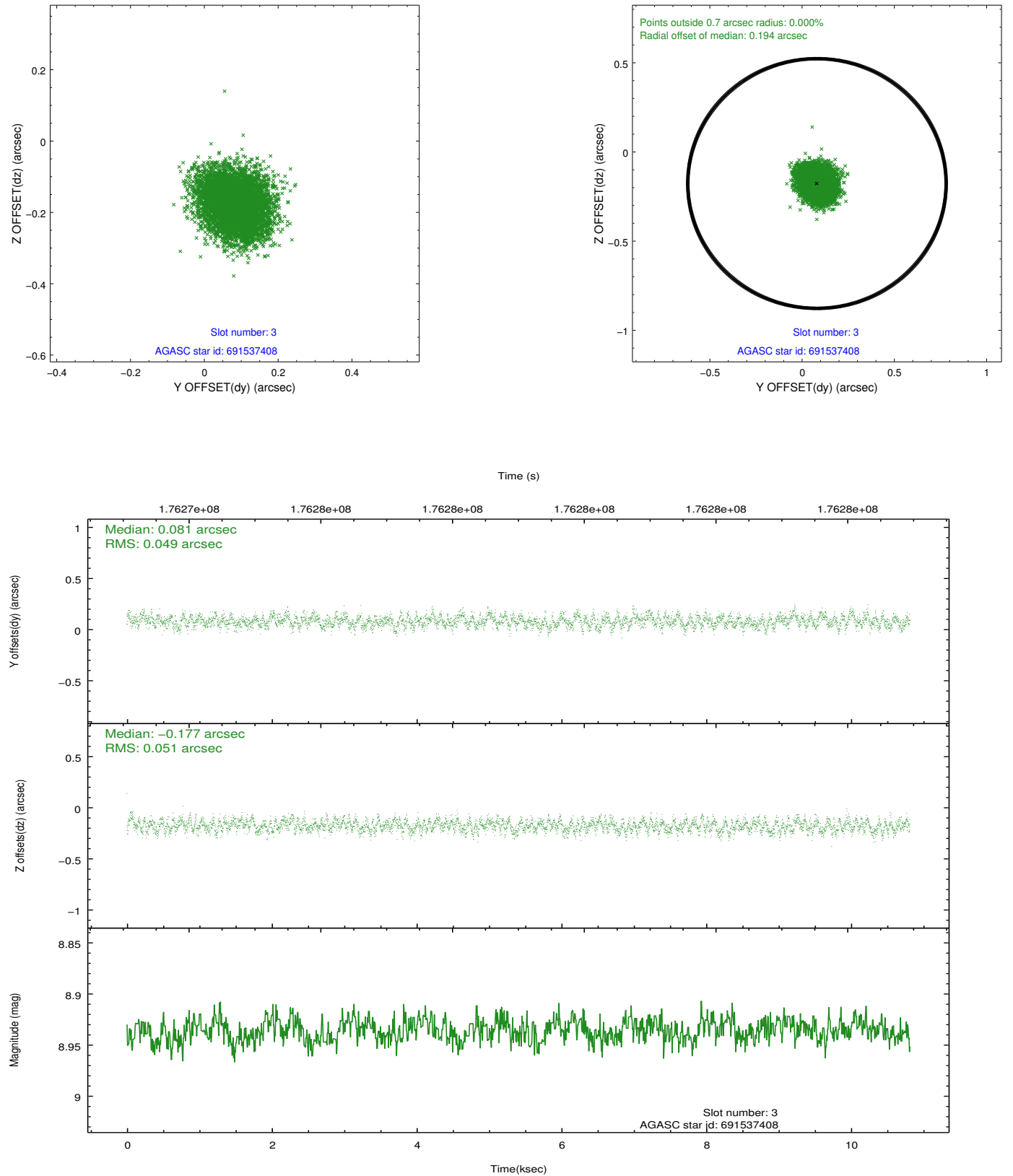


Slot Statistics

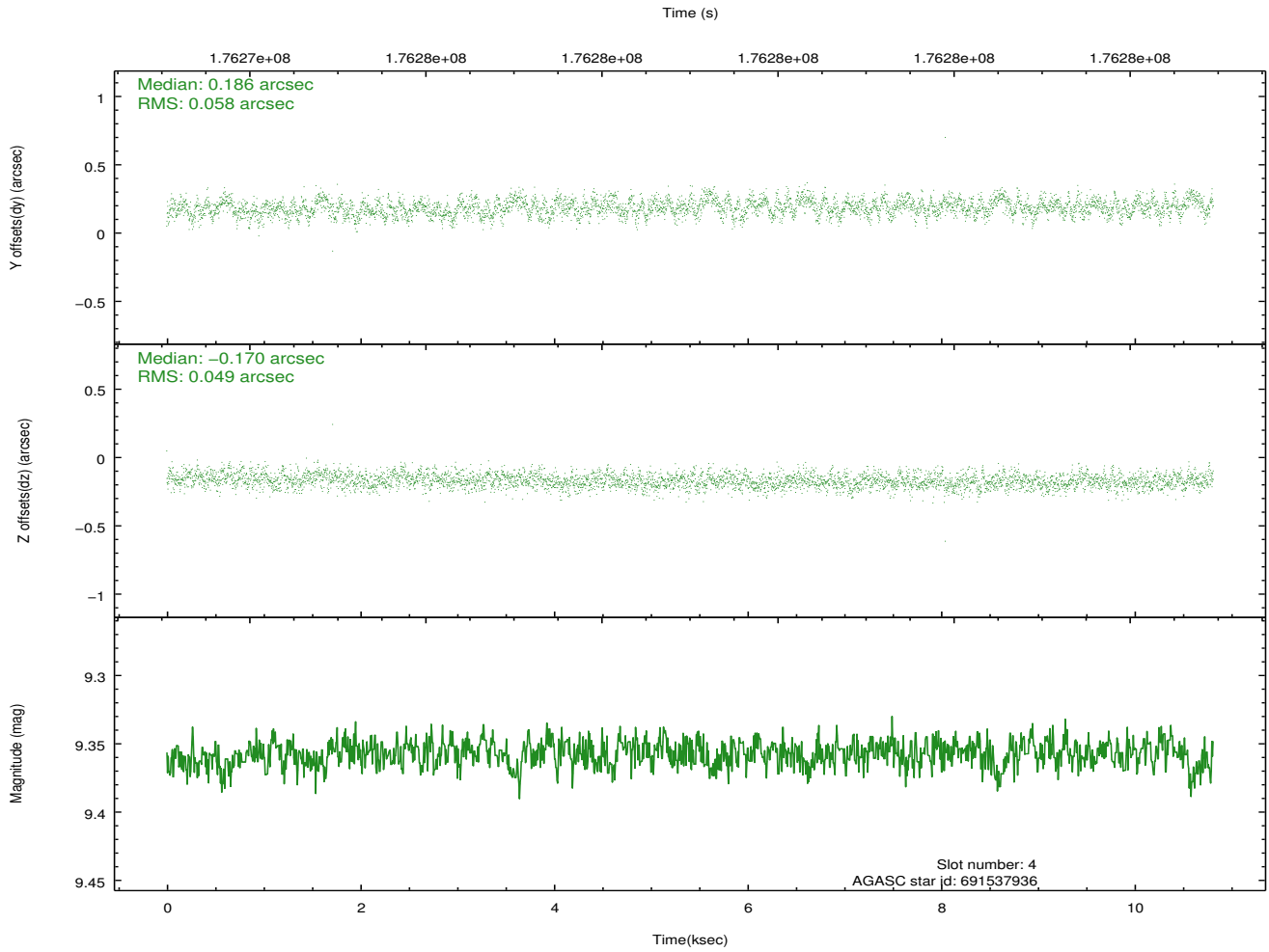
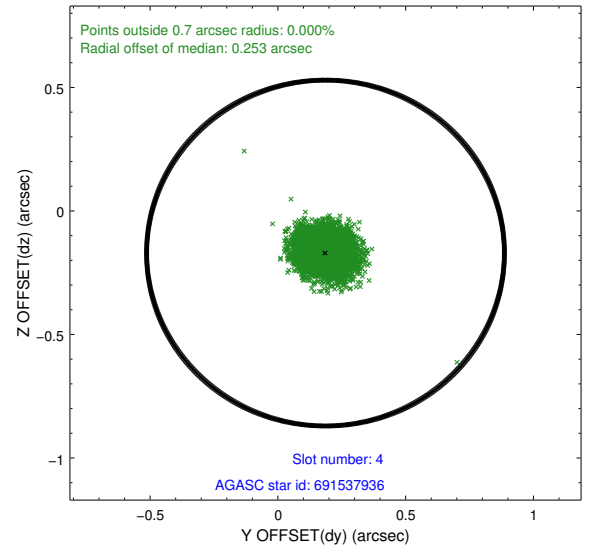
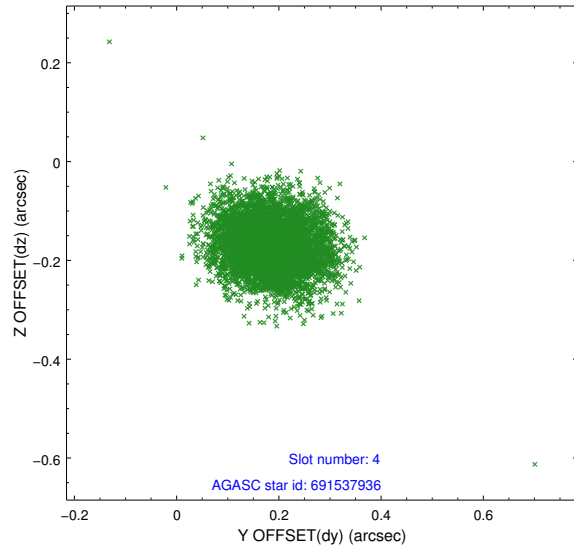
slot	status	id	mag	n_pts	med_dy	med_dz	dr1	dr2	ra	dec	mean_y	mean_z
0	FID	ACIS-I-1	7.23	2638	0.072	-0.061	0.016	0.029	0.000000	0.000000	934.79	-992.31
1	FID	ACIS-I-5	7.21	2637	-0.226	0.065	0.013	0.024	0.000000	0.000000	-1813.35	905.02
2	FID	ACIS-I-6	7.25	2637	0.063	0.068	0.010	0.018	0.000000	0.000000	399.81	1550.07
3	GUIDE	691537408	8.94	5270	0.081	-0.177	0.077	0.121	22.895794	-13.690101	-317.58	381.11
4	GUIDE	691537936	9.36	5274	0.186	-0.170	0.081	0.129	22.686545	-14.169763	-1823.30	1497.89
5	GUIDE	691537616	8.14	5275	-0.347	-0.138	0.053	0.085	22.649107	-12.975933	2384.39	616.66
6	GUIDE	691933096	9.32	5266	-0.087	0.150	0.108	0.172	23.143345	-12.852683	2408.01	-1173.32
7	GUIDE	691937904	9.76	5266	0.164	0.334	0.108	0.177	23.765212	-13.896255	-1758.94	-2395.32

2.4 Star Slots

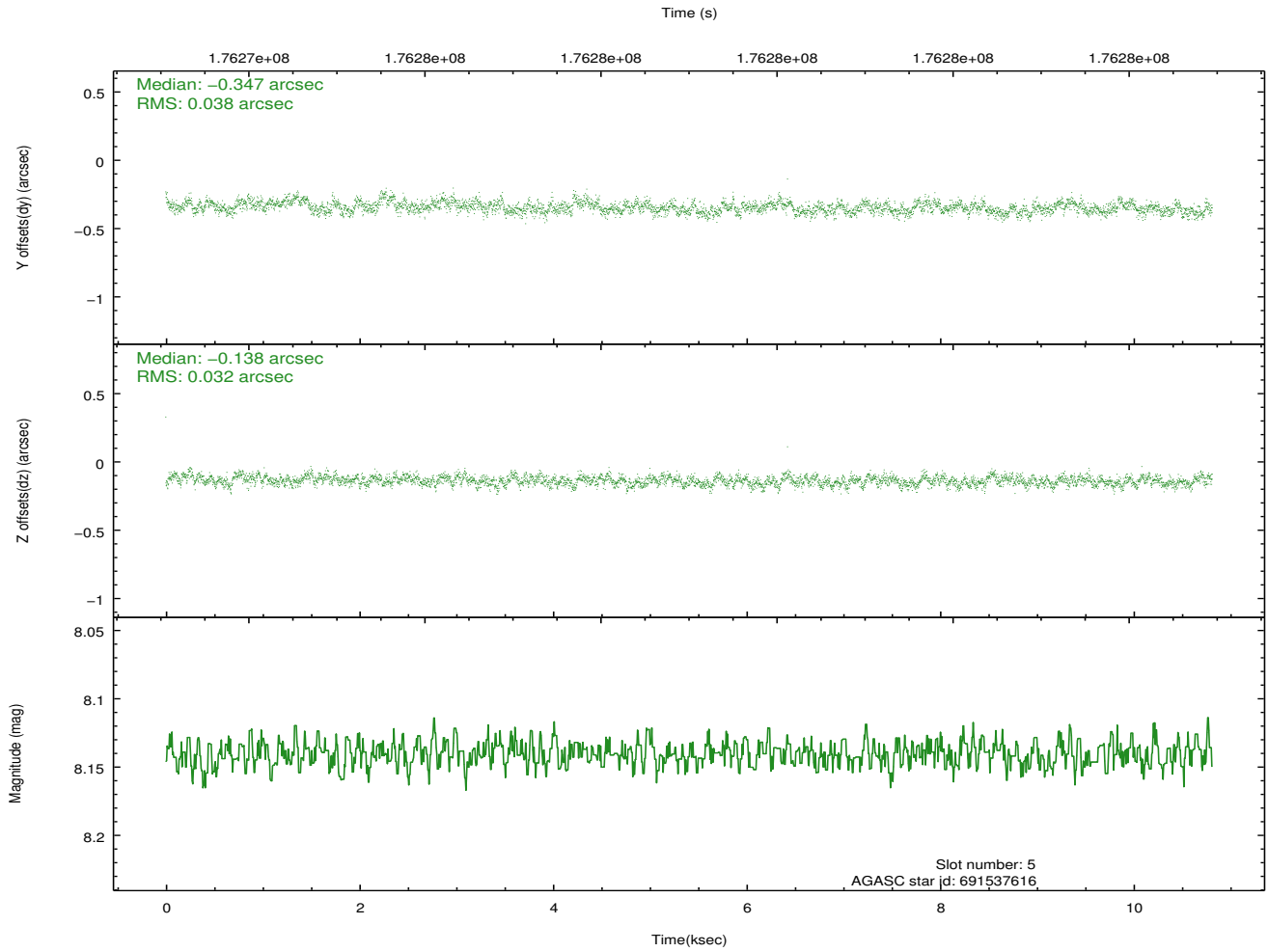
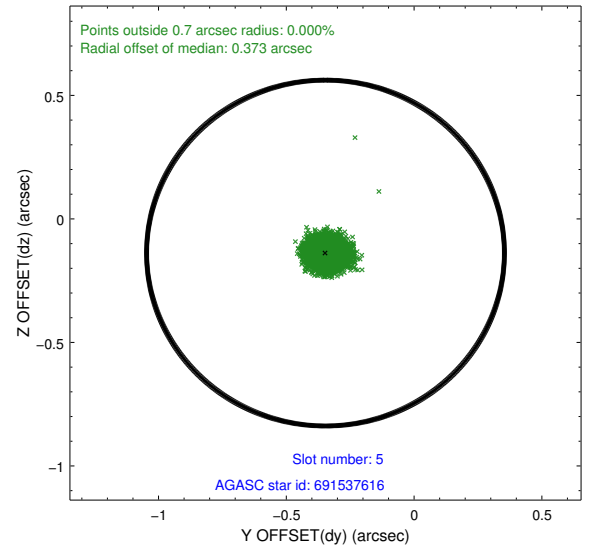
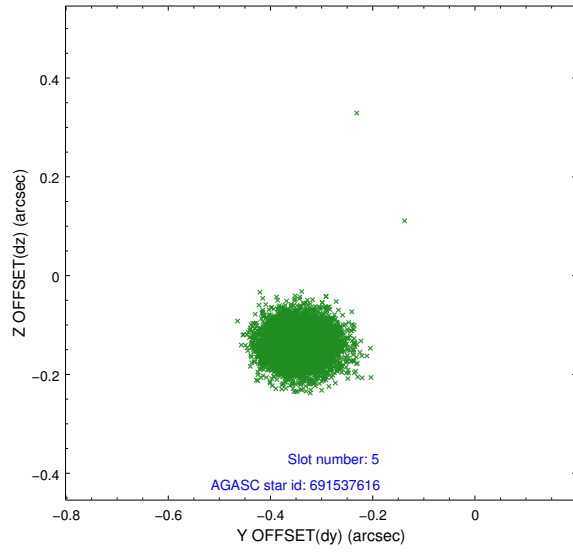
2.4.1 Slot 3



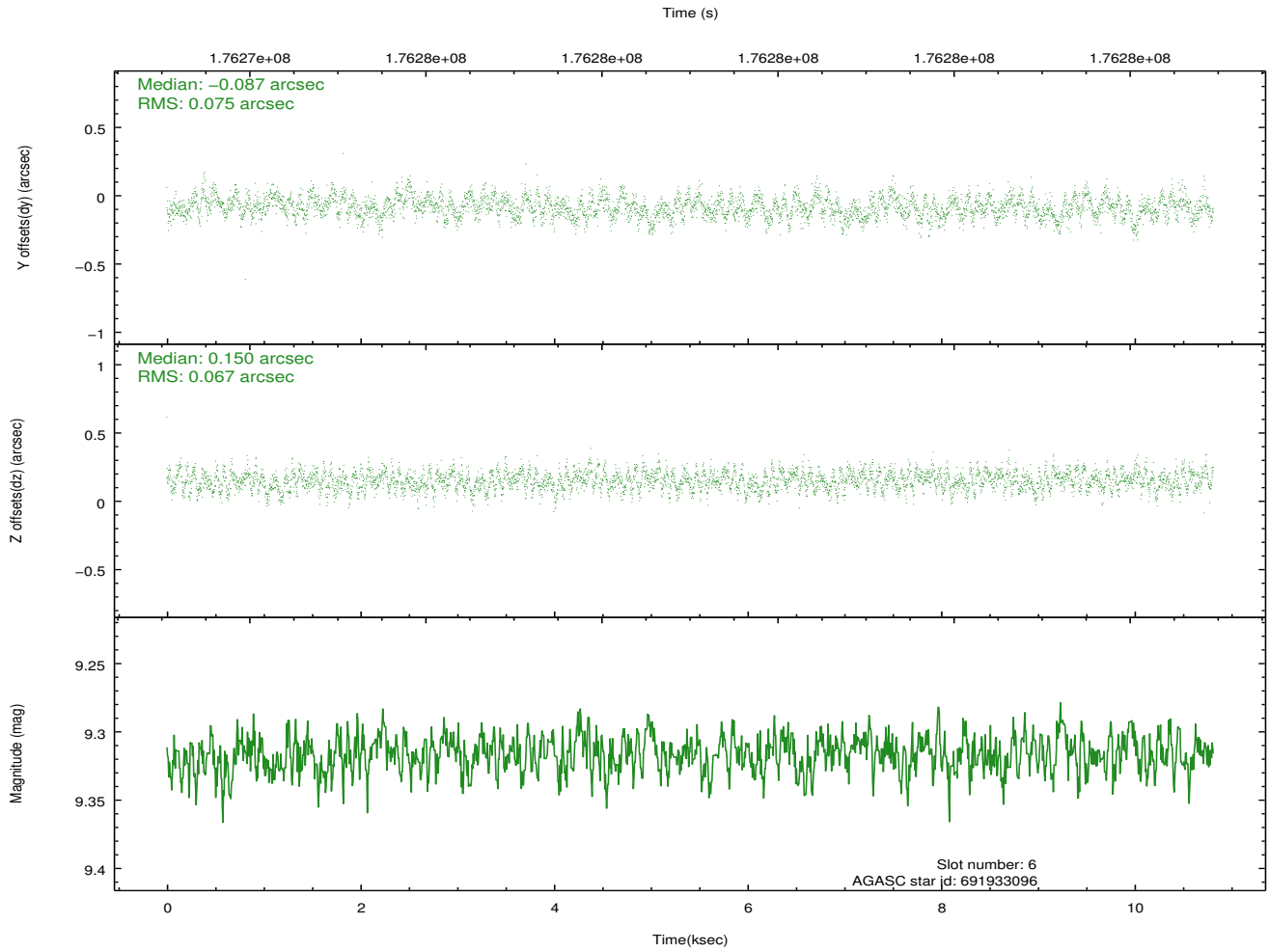
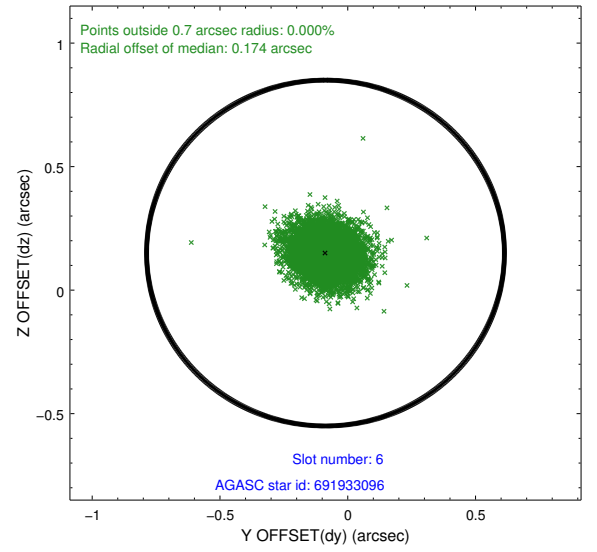
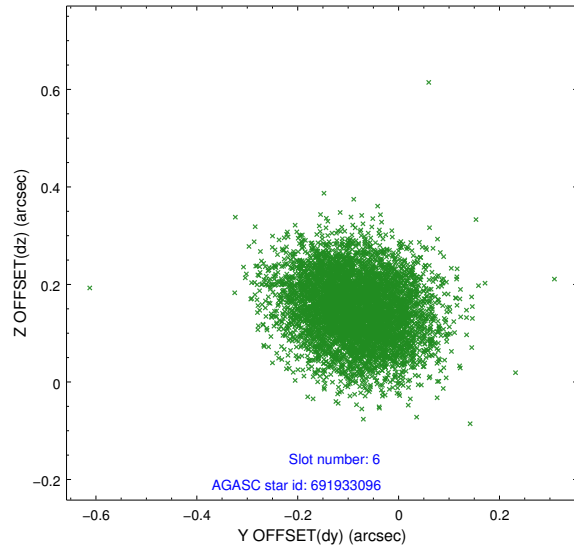
2.4.2 Slot 4



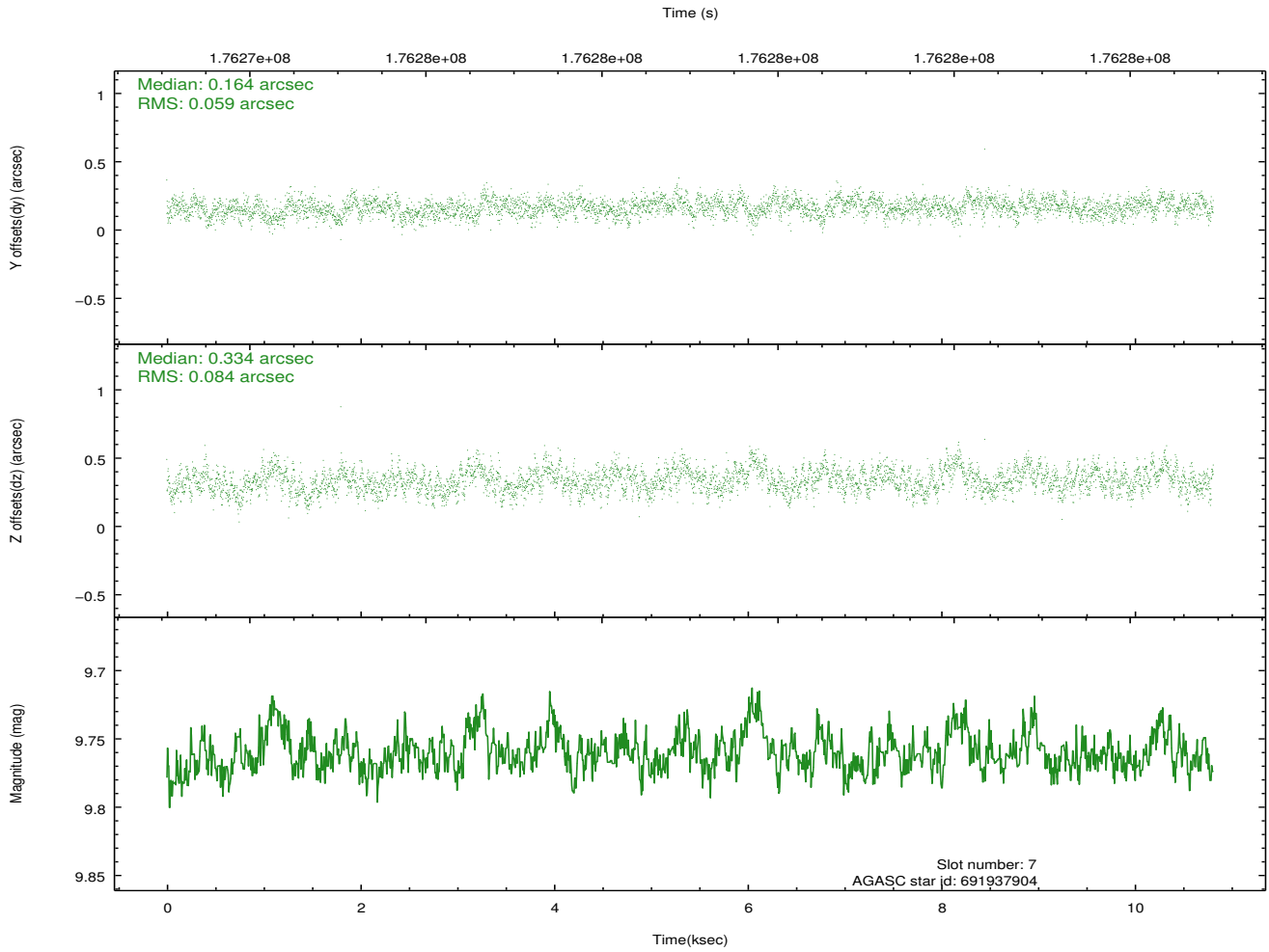
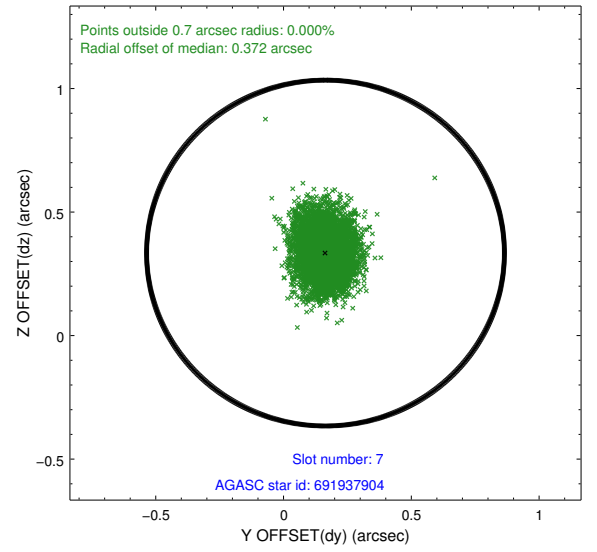
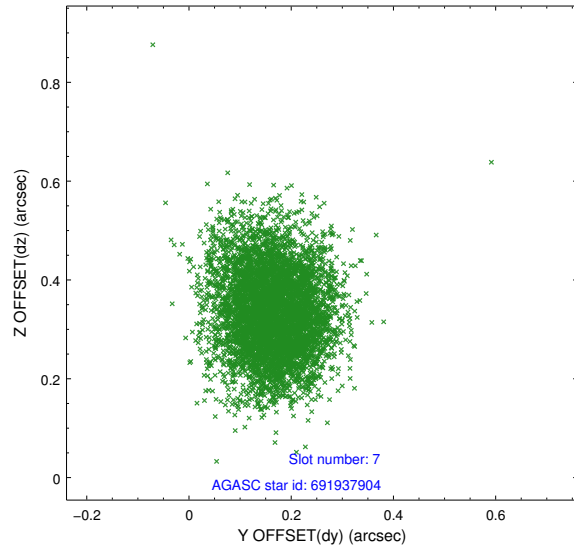
2.4.3 Slot 5



2.4.4 Slot 6

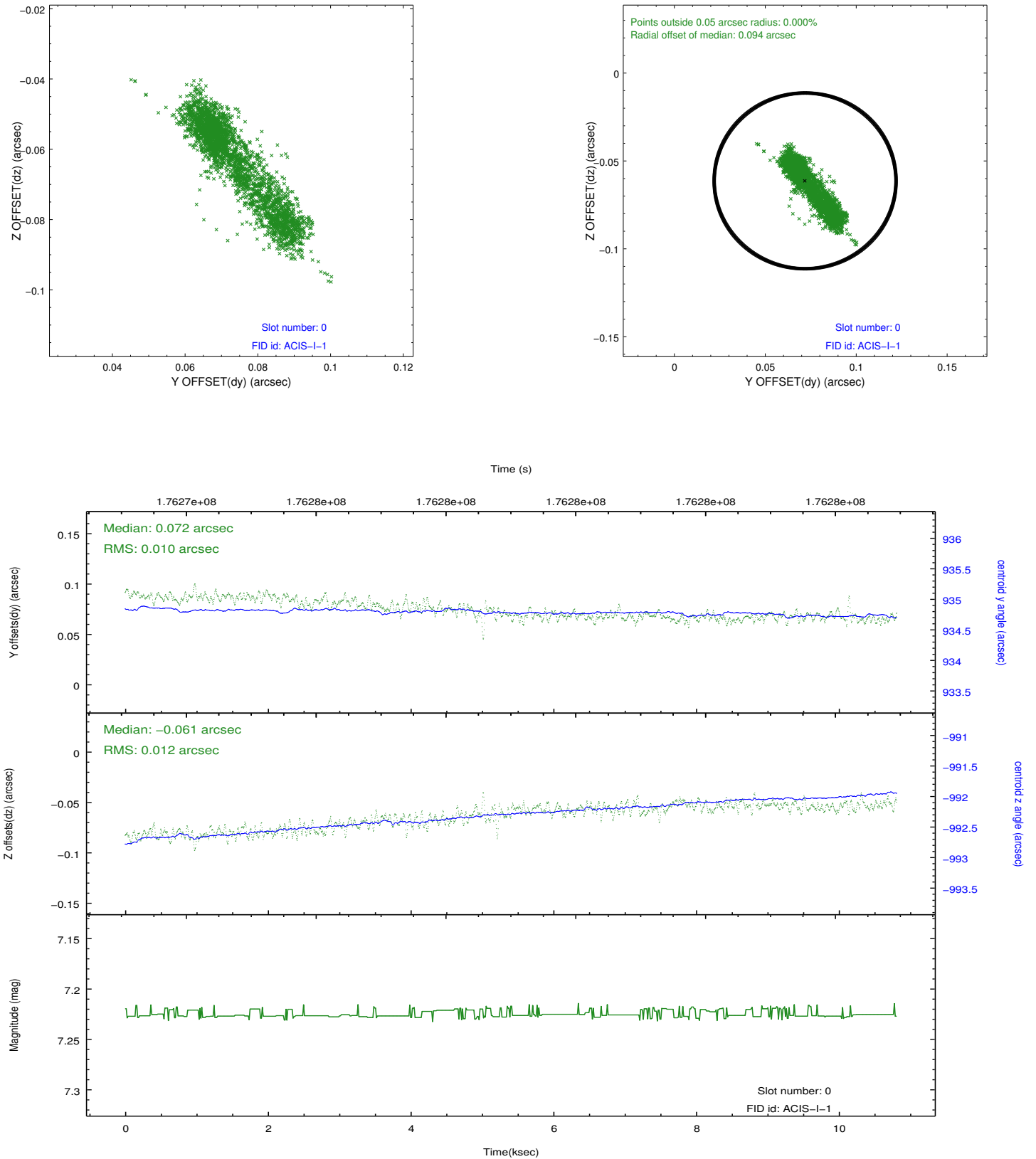


2.4.5 Slot 7

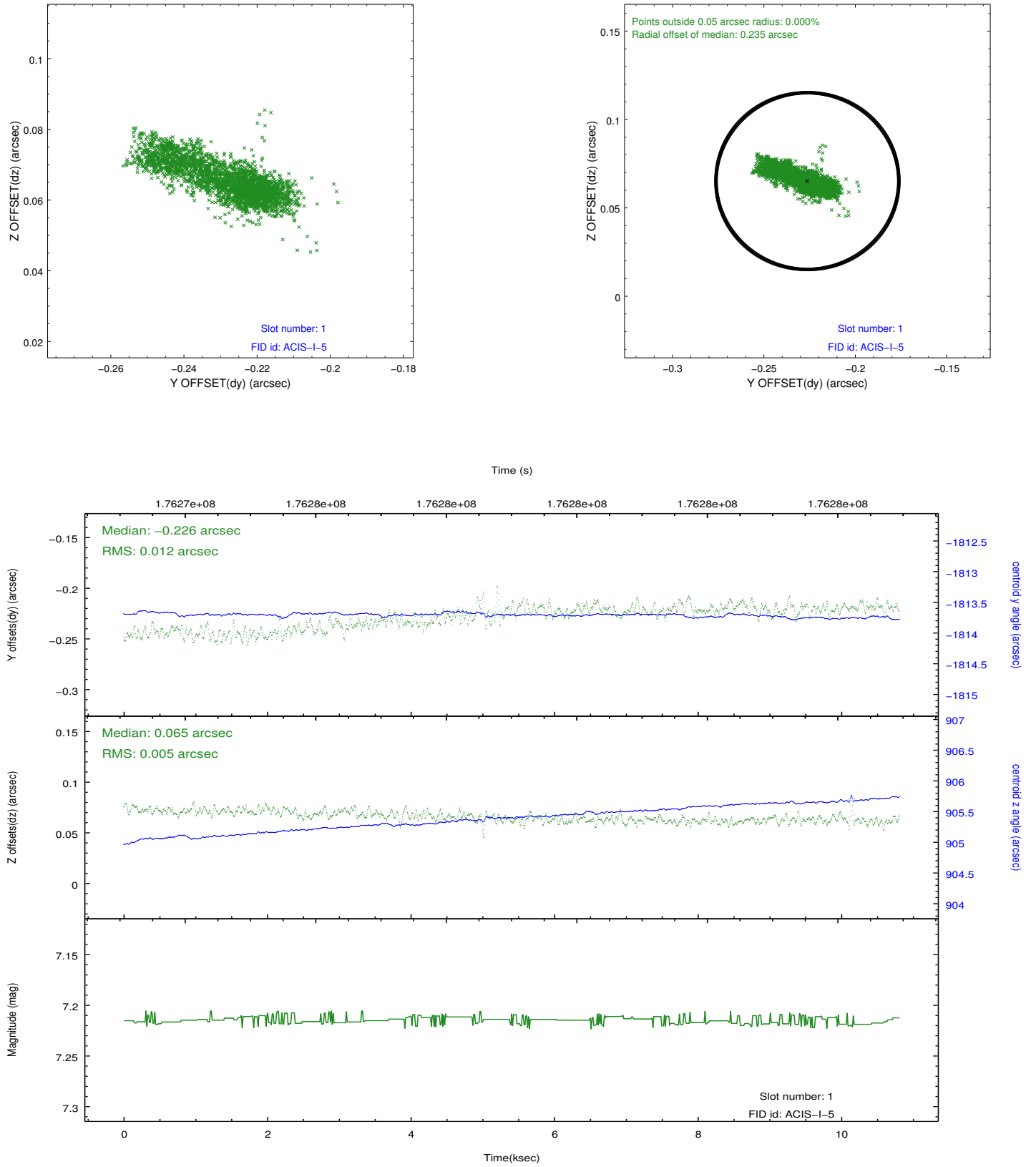


2.5 FID Slots

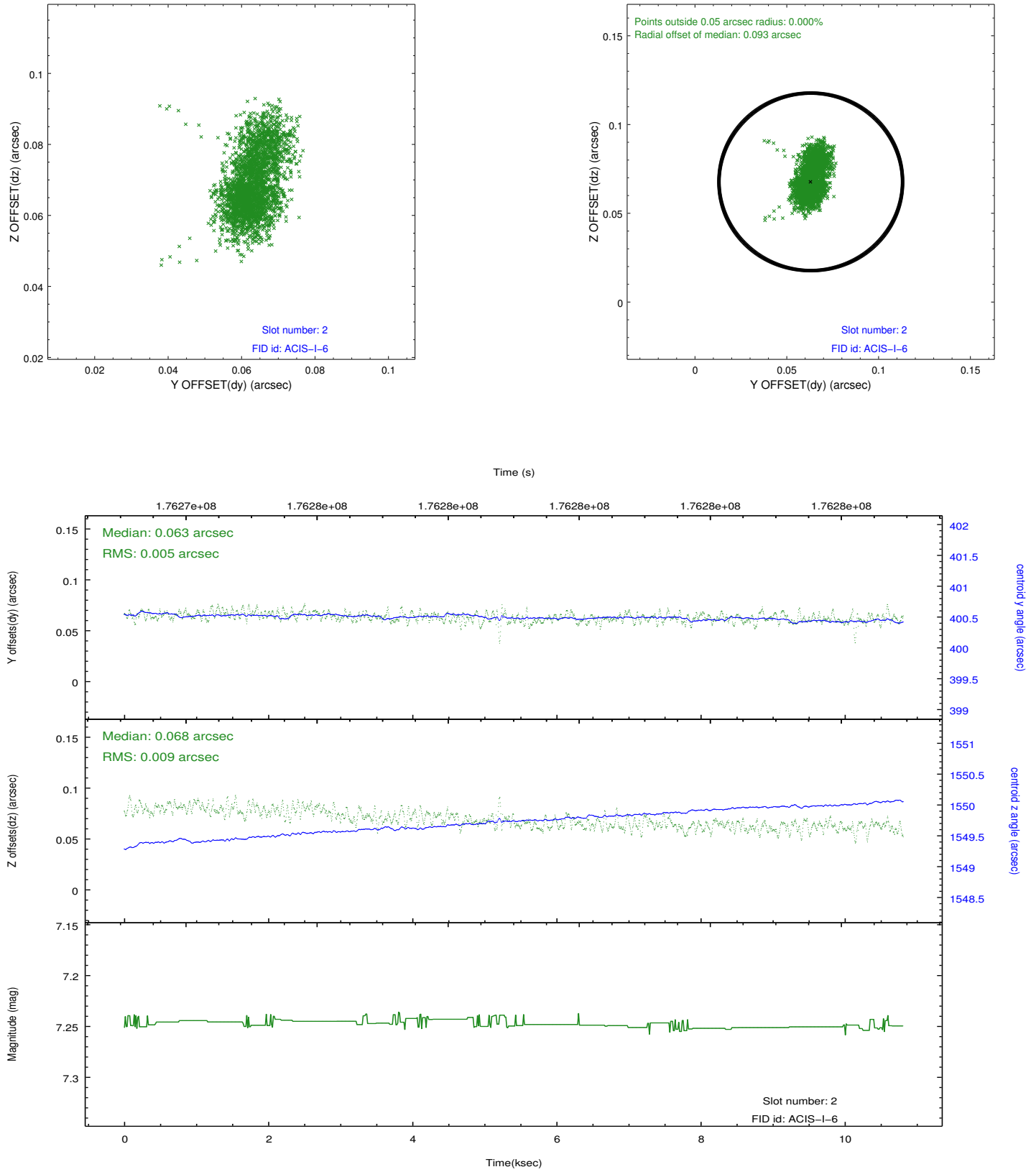
2.5.1 Slot 0



2.5.2 Slot 1



2.5.3 Slot 2



A Summary

A.1 Status

V&V Scientist	Jen Lauer
V&V Date (YYYY-MM-DD)	2012.11.16
V&V Edition	1
V&V Disposition and Status	OK
V&V Charge Time	10.118

A.2 Comments