

V&V Reference Report

L2 ASCDS Version : 8.4.5

Observation 3559 - L2 Version 3
Chandra X-Ray Center

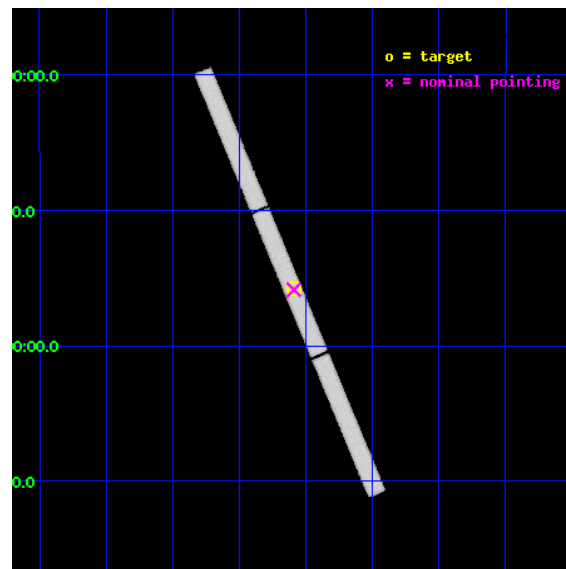
L2 Processing Date : Oct 29 2012

Contents

1	Front	2
2	OBI	3
2.1	OBI	3
2.1.1	Images	3
2.1.2	Parameters	4
2.1.3	Events	4
2.2	Compared Parameters	5
2.3	Aspect	6
2.4	Star Slots	9
2.4.1	Slot 3	9
2.4.2	Slot 4	10
2.4.3	Slot 5	11
2.4.4	Slot 6	12
2.4.5	Slot 7	13
2.5	FID Slots	14
2.5.1	Slot 0	14
2.5.2	Slot 1	15
2.5.3	Slot 2	16
3	Gratings	17
3.1	LETG Arm	17
A	Summary	19
A.1	Status	19
A.2	Comments	19

1 Front

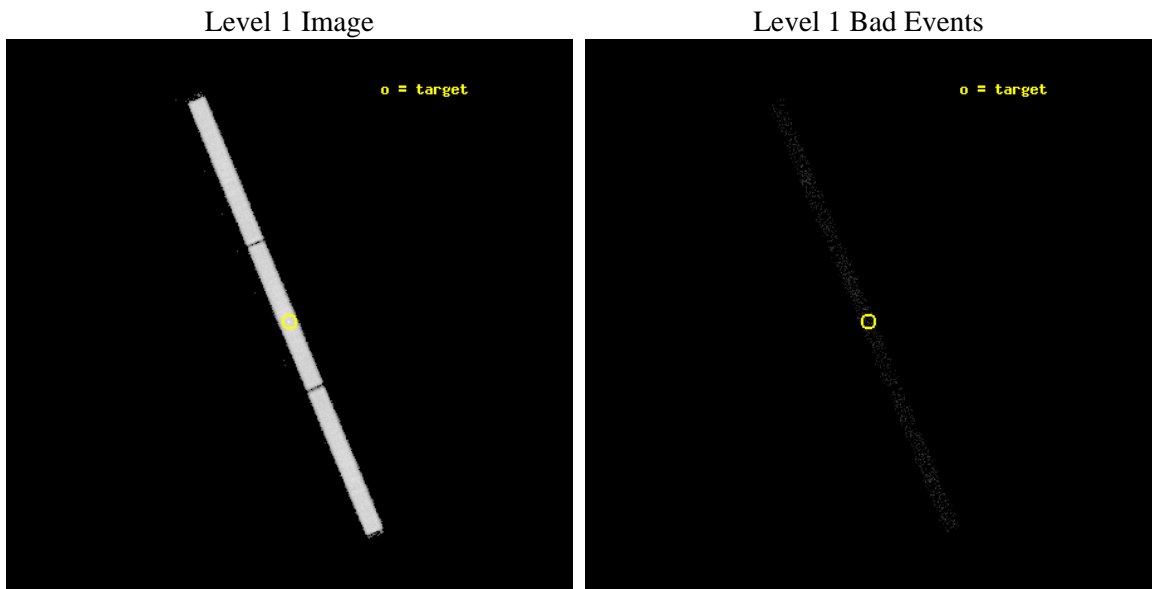
seq_num	700621	Sequence number
obs_id	3559	Observation id
title	CHANDRA LETG SPECTROSCOPY OF THE GAMMA-RAY BLAZAR 3C 279 AS PART OF A MULTIFREQUENCY CAMPAIGN	Proposal title
observer	Dr. Peter Predehl	Principal investigator
object	3C 279	Source name
ra_targ	194.046667	Observer's specified target RA [deg]
dec_targ	-5.789306	Observer's specified target Dec [deg]
ra_nom	194.0447134499	Nominal RA [deg]
dec_nom	-5.7937926878991	Nominal Dec [deg]
roll_nom	247.2668688127	Nominal Roll [deg]
revision	3	Processing version of data
ontime	4981.7564612925	[s]
livetime	4955.5774921336	Ontime multiplied by DTCOR
l2events	205109	Number of level 2 events



2 OBI

2.1 OBI

2.1.1 Images



2.1.2 Parameters

obi_num	1	Obi number	sched_exp_time	5000.000000	[s] Scheduled observation exposure time
ascdsver	8.4.5	Processing system revision	ontime	4981.7564612925	[s]
caldsver	4.5.2	 	l1events	292613	Number of level 1 events
date	2012-10-29T04:25:02	Date and time of file creation			
revision	3	Processing version of data			

2.1.3 Events

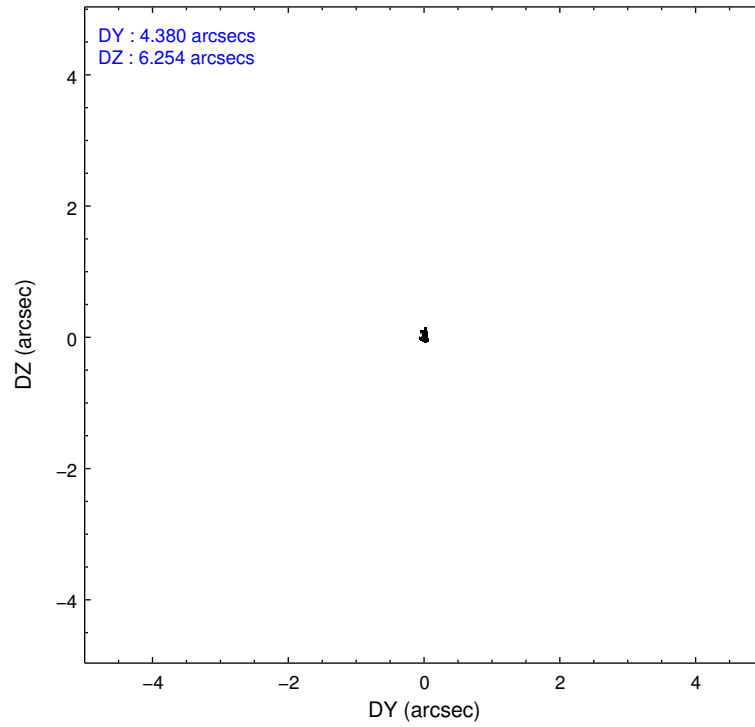
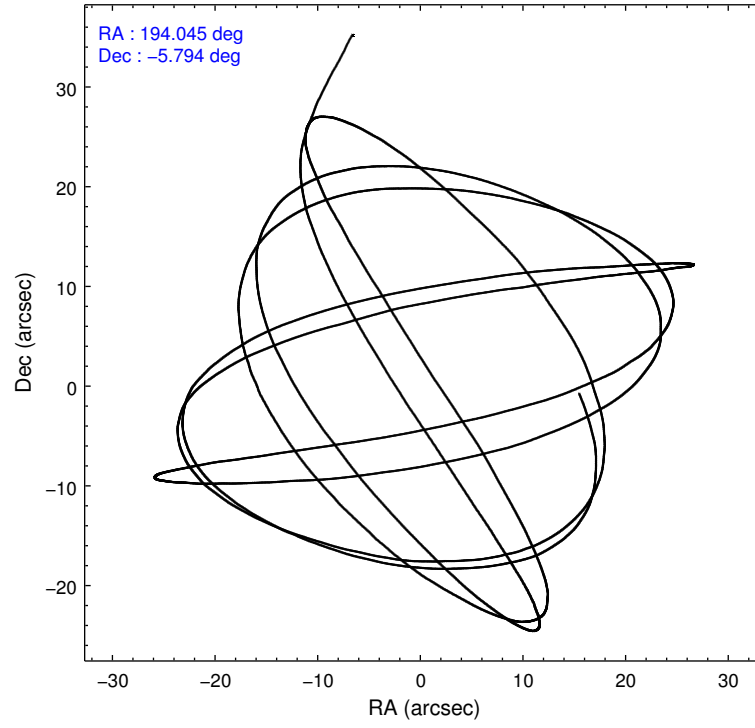
Level 1 Events

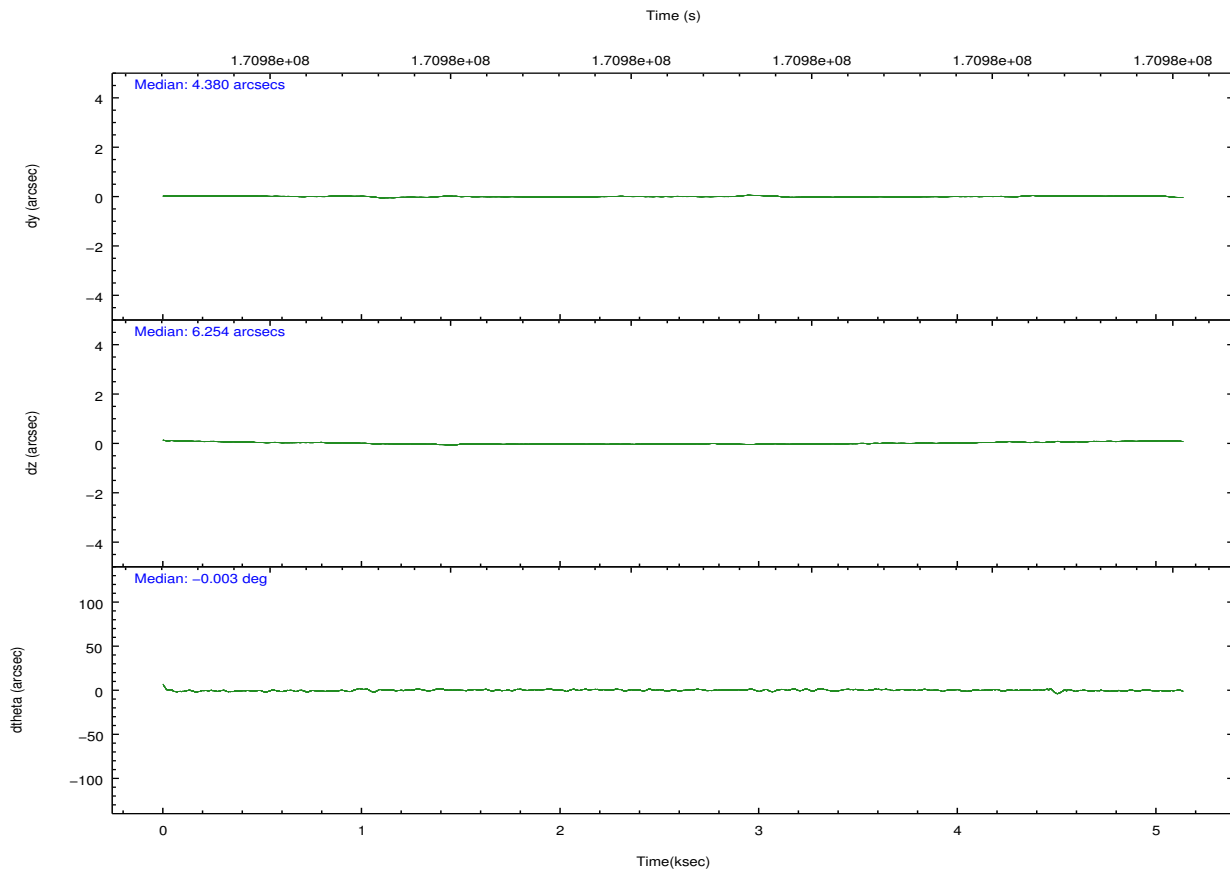
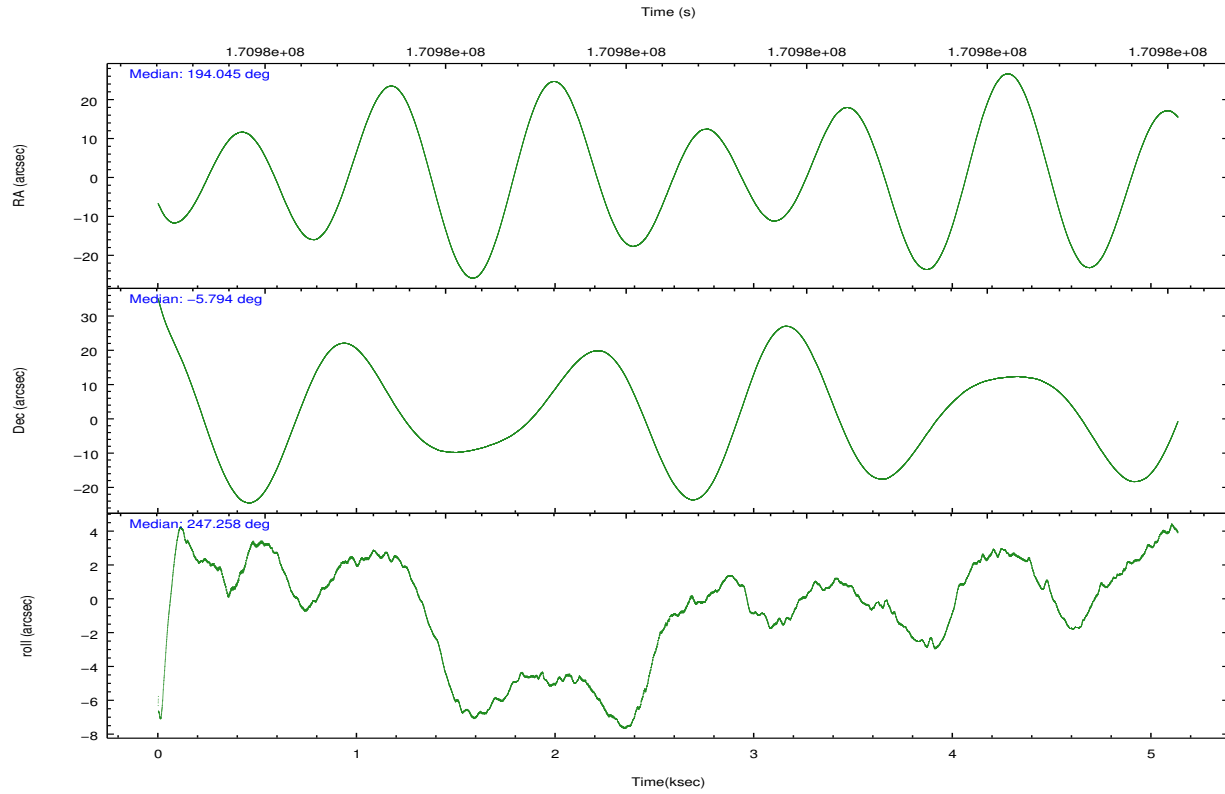
	segment 1	segment 2	segment 3
level 1 events	97719	96646	98248
rejected events	1475	1571	1555
rejected %	1%	1%	1%

2.2 Compared Parameters

Parameter	Planned	Actual	Parameter	Planned	Actual
Instrument	HRC	HRC	Obspar format version number	7	7
Detector	HRC-S	HRC-S	Obspar file type	PREDICTED	ACTUAL
Grating	LETG	LETG	Obspar update status	NONE	UPDATED
Data mode	OBSERVING	OBSERVING			
Observation mode	POINTING	POINTING			
[deg] Pointing RA	194.039683	194.044713449902			
[deg] Pointing Dec	-5.765409	-5.79379268789906			
[deg] Pointing Roll	247.199048	247.2668688126998			
[mm] SIM focus pos	-1.429586	-1.428180813131781			
[mm] SIM defocus	0.1037507710433287	0.1051558262725154			
[mm] SIM translation stage pos	250.455976	250.466033080201			
[mm] SIM translation stage offset	0	-0.01005468664627074			
[s] Observation start time (MET)	170975801.184000	170974679.84863			
Observation start date	2003-06-02T21:15:37	2003-06-02T20:57:59			
[s] Observation end time (MET)	170980801.184000	170981391.03642			
Observation end date	2003-06-02T22:38:57	2003-06-02T22:49:51			

2.3 Aspect



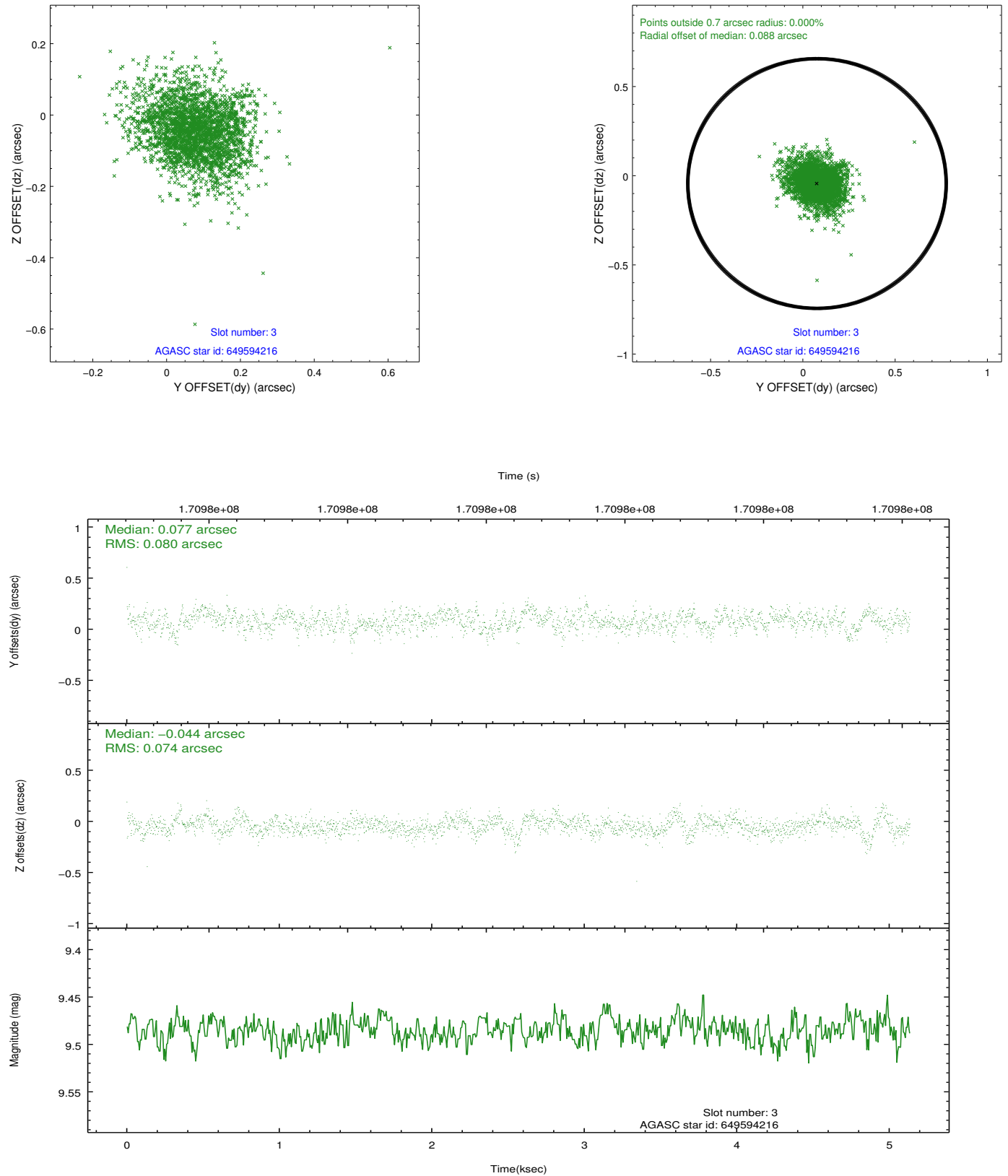


Slot Statistics

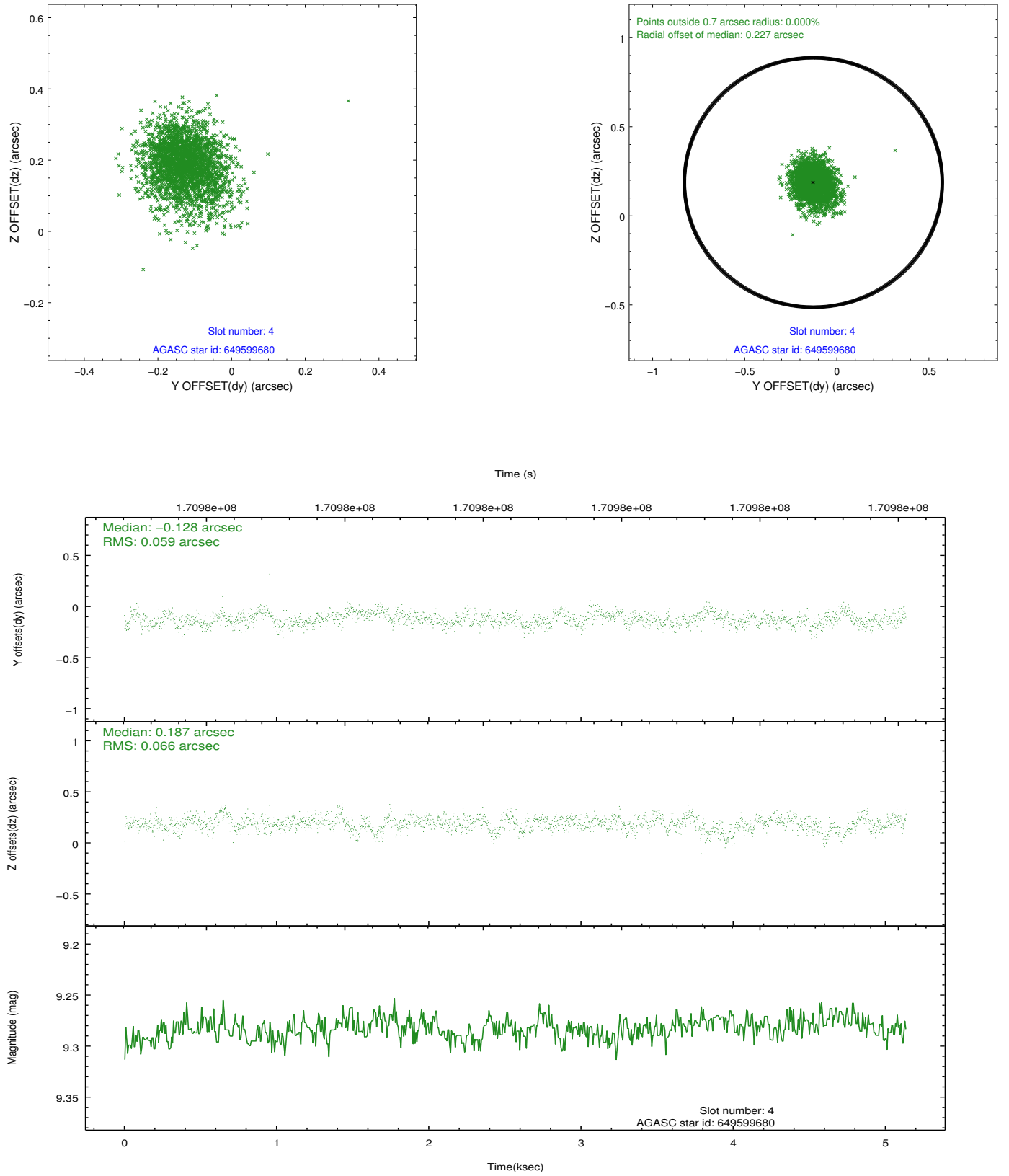
slot	status	id	mag	n_pts	med_dy	med_dz	dr1	dr2	ra	dec	mean_y	mean_z
0	FID	HRC-S-2	7.03	1253	0.119	-0.166	0.008	0.014	0.000000	0.000000	1241.20	-447.50
1	FID	HRC-S-3	7.04	1253	0.155	-0.105	0.005	0.009	0.000000	0.000000	-1160.16	574.41
2	FID	HRC-S-4	6.99	1253	0.131	-0.025	0.008	0.014	0.000000	0.000000	1238.87	577.83
3	GUIDE	649594216	9.49	2504	0.077	-0.044	0.114	0.185	193.273989	-6.022654	1917.89	-2167.57
4	GUIDE	649599680	9.28	2505	-0.128	0.187	0.093	0.157	194.094993	-5.408421	-1261.43	-316.44
5	GUIDE	649599704	8.67	2505	0.044	0.062	0.059	0.100	194.128261	-6.327014	1739.89	1075.50
6	GUIDE	649601232	8.46	2506	-0.053	0.120	0.081	0.125	194.416640	-6.392285	1558.03	2118.57
7	GUIDE	649600632	9.20	2504	0.053	-0.328	0.092	0.146	194.611004	-6.048463	147.65	2281.13

2.4 Star Slots

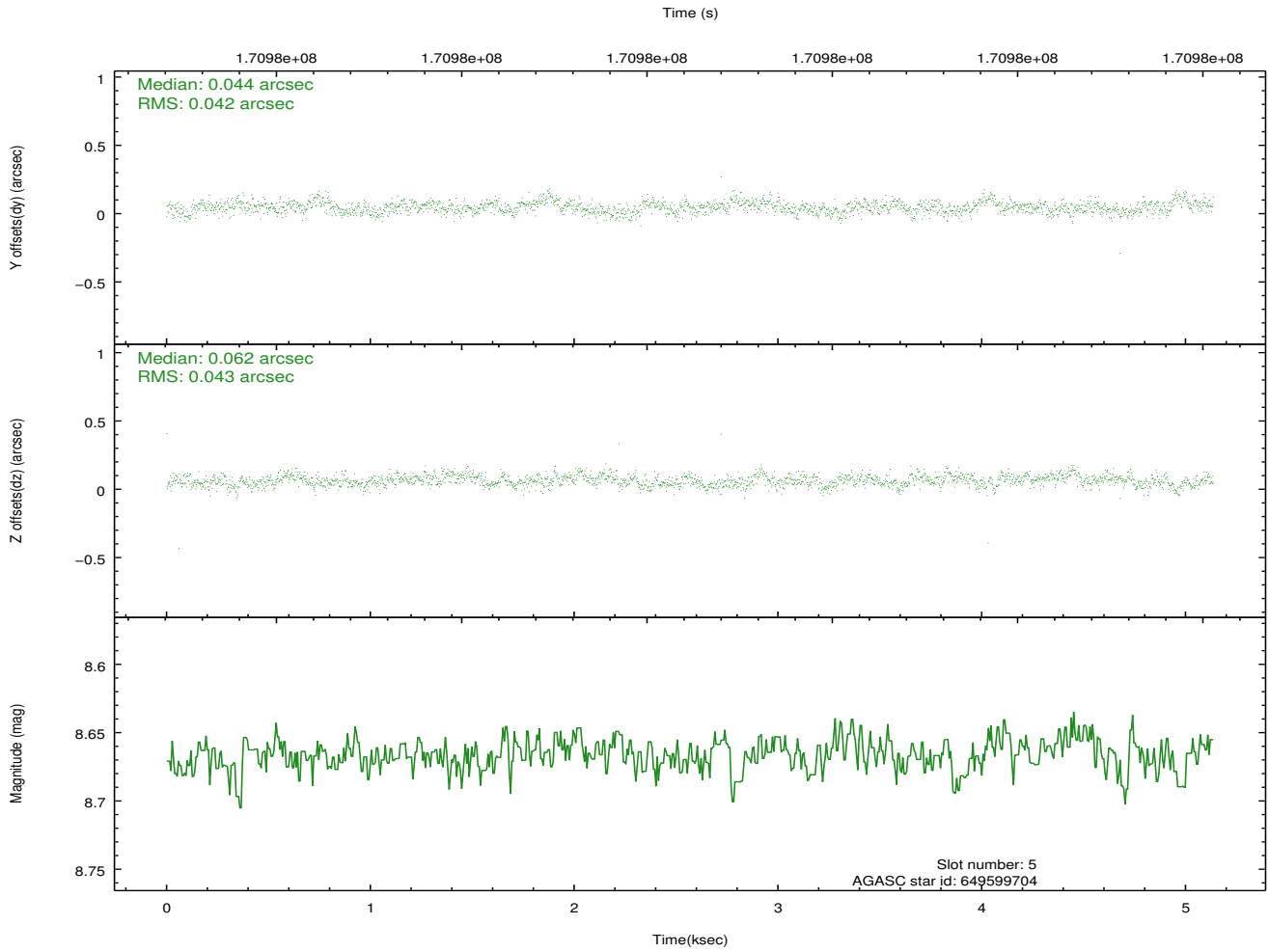
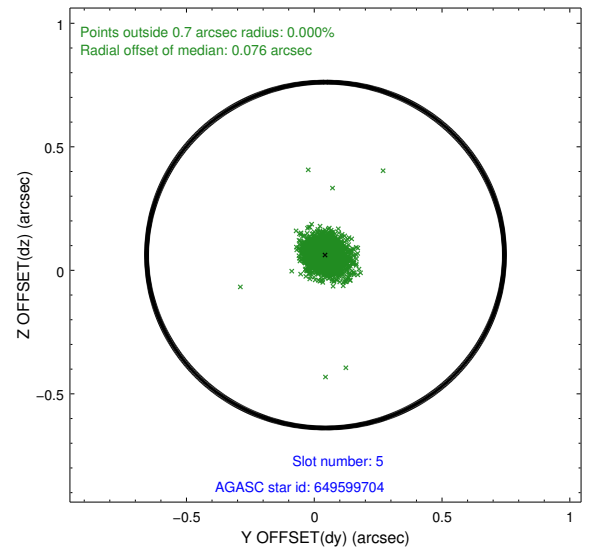
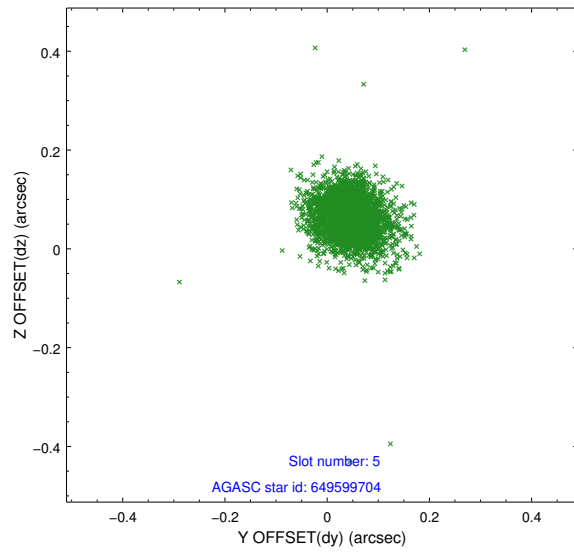
2.4.1 Slot 3



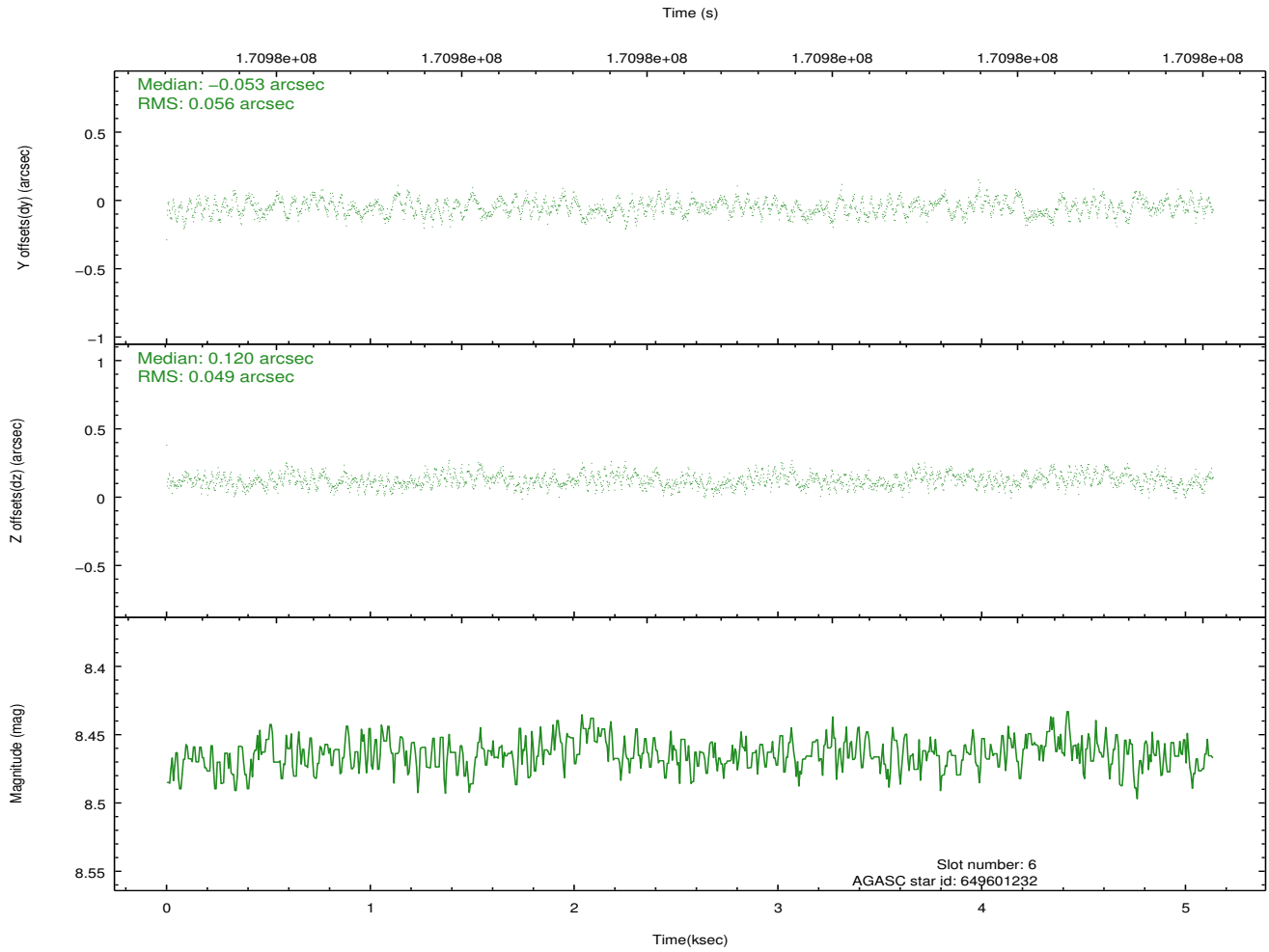
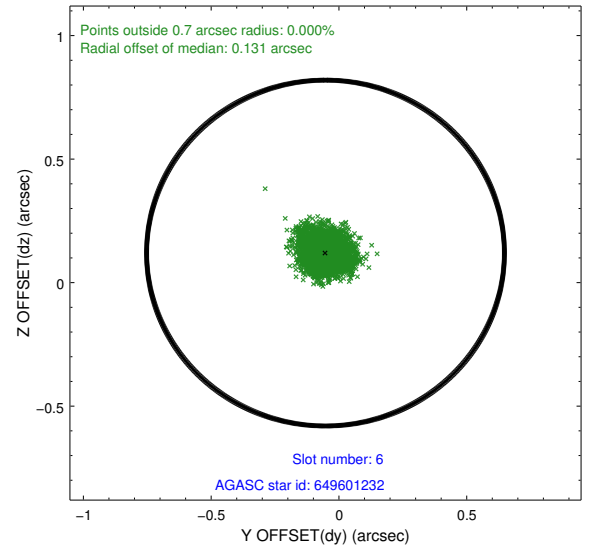
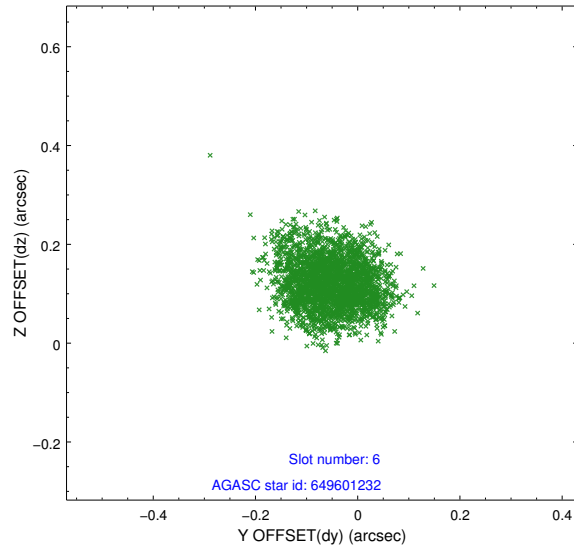
2.4.2 Slot 4



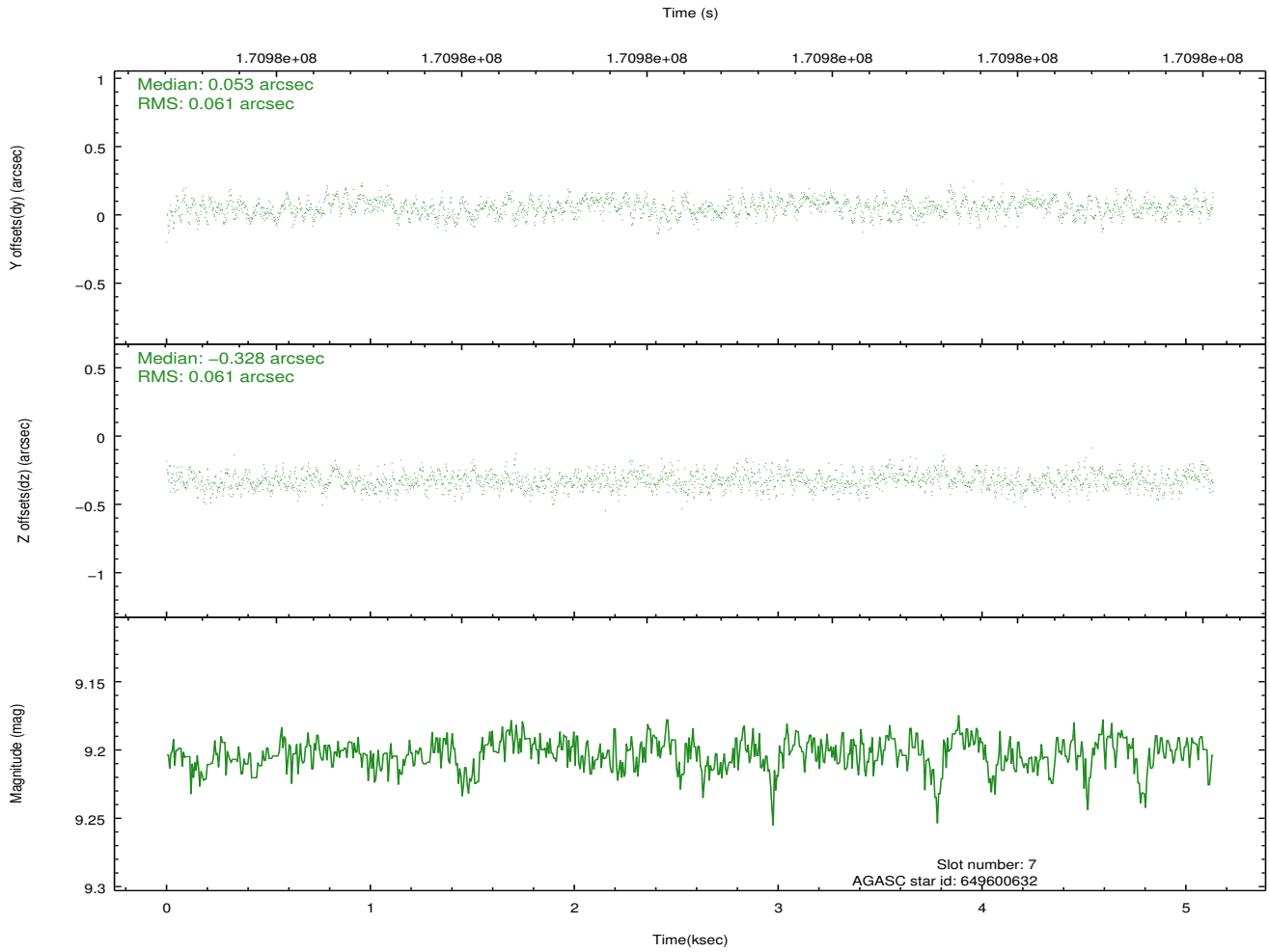
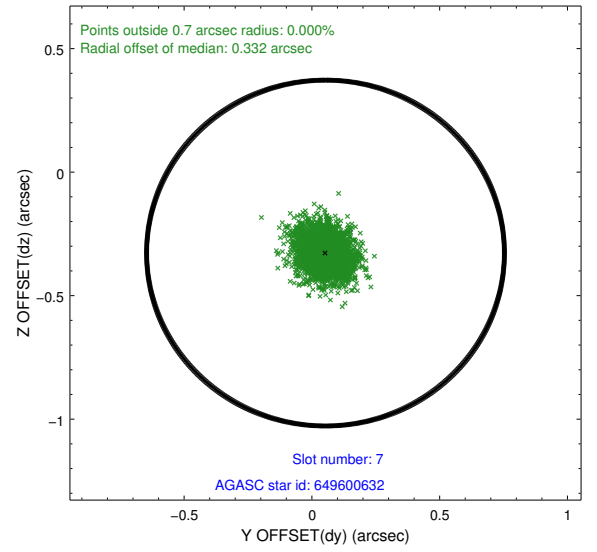
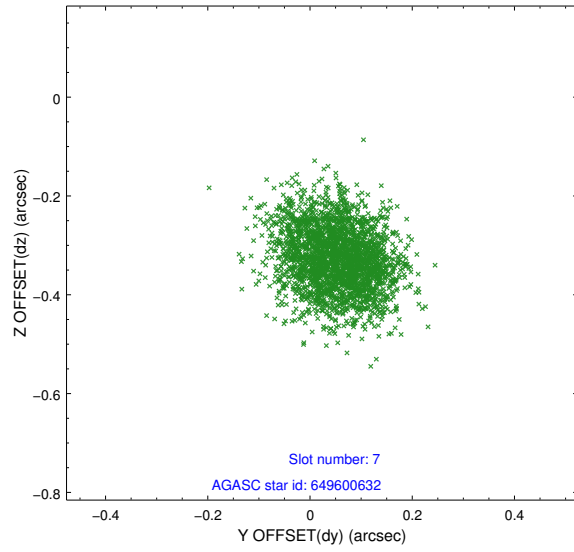
2.4.3 Slot 5



2.4.4 Slot 6

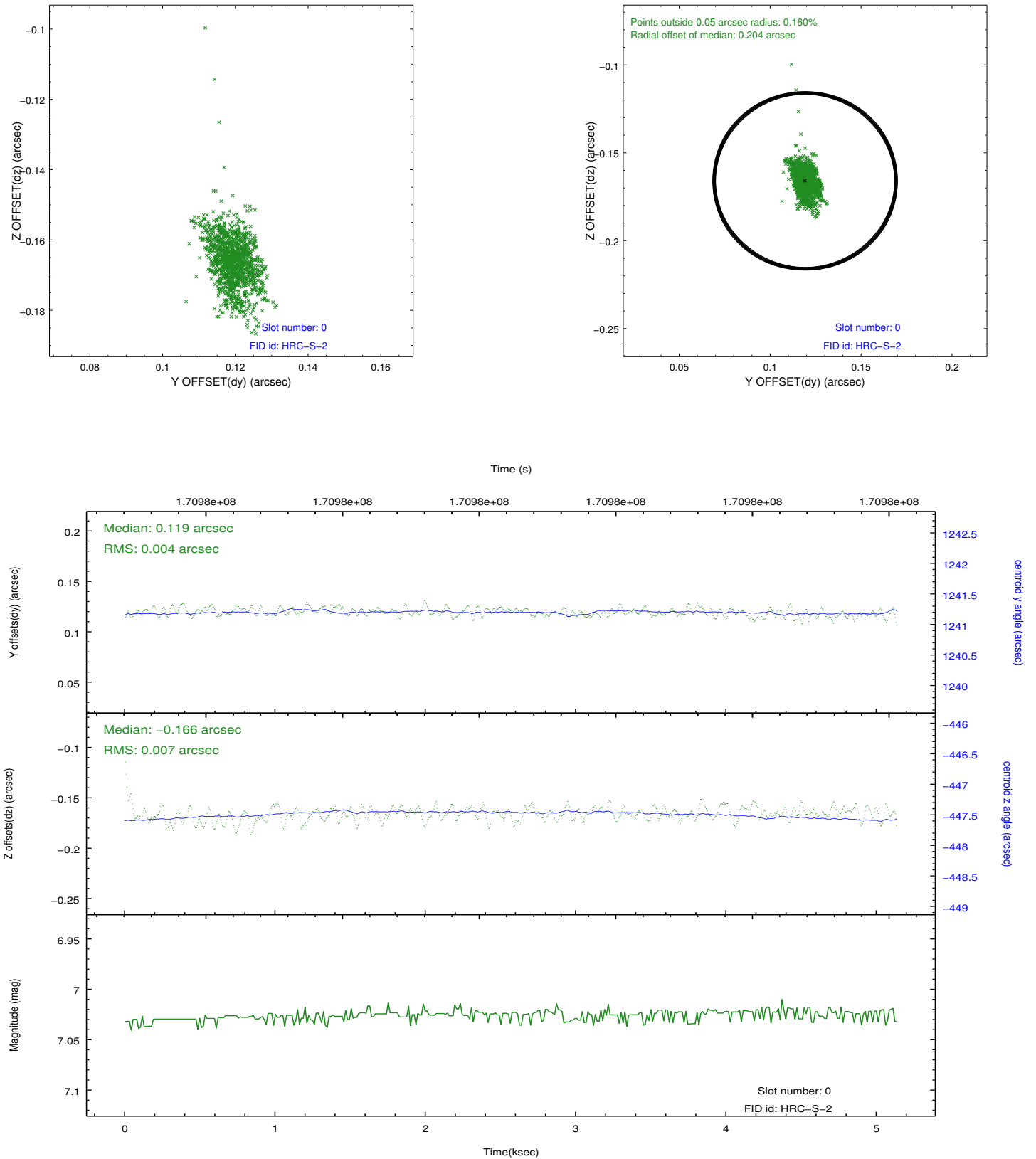


2.4.5 Slot 7

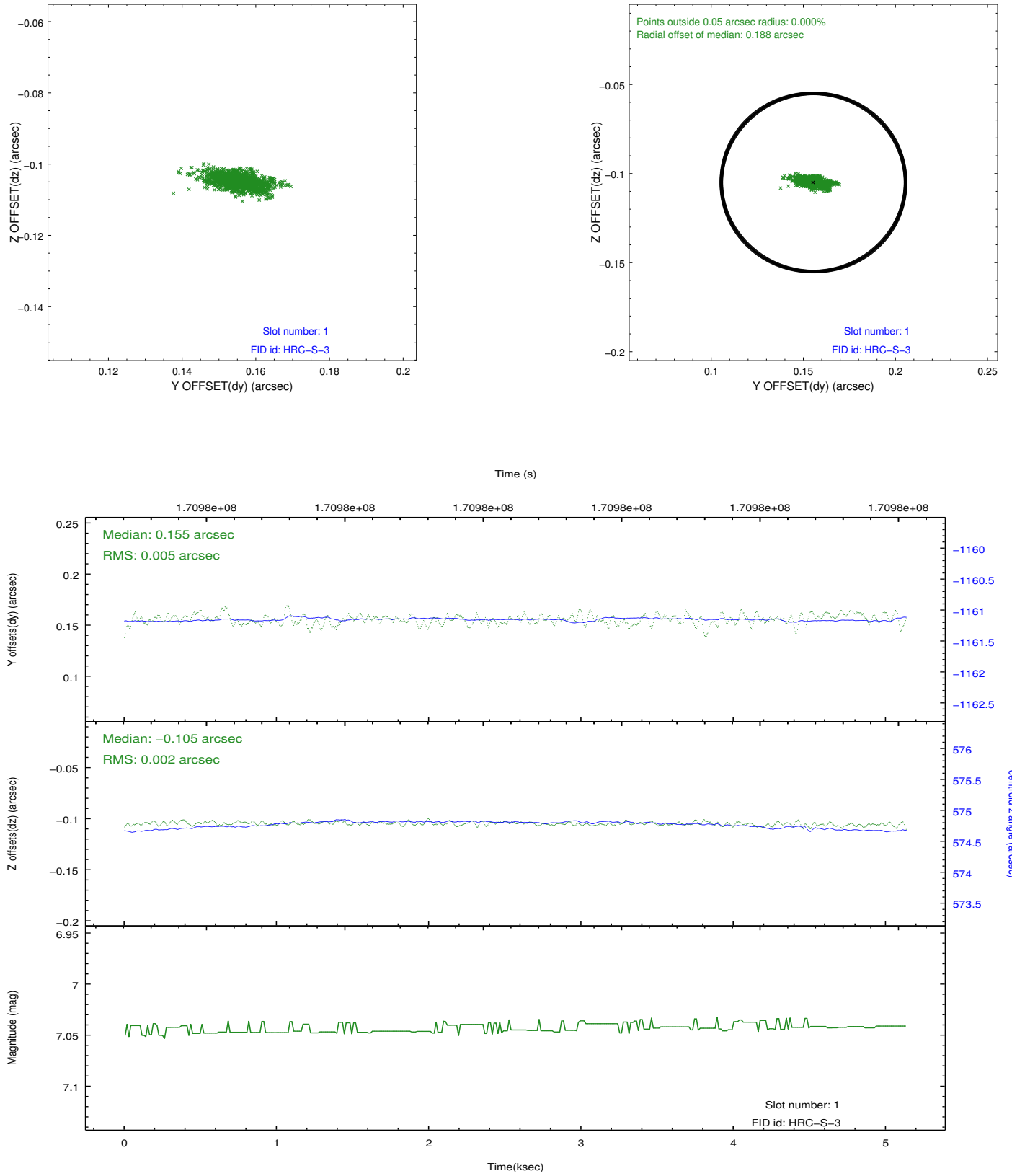


2.5 FID Slots

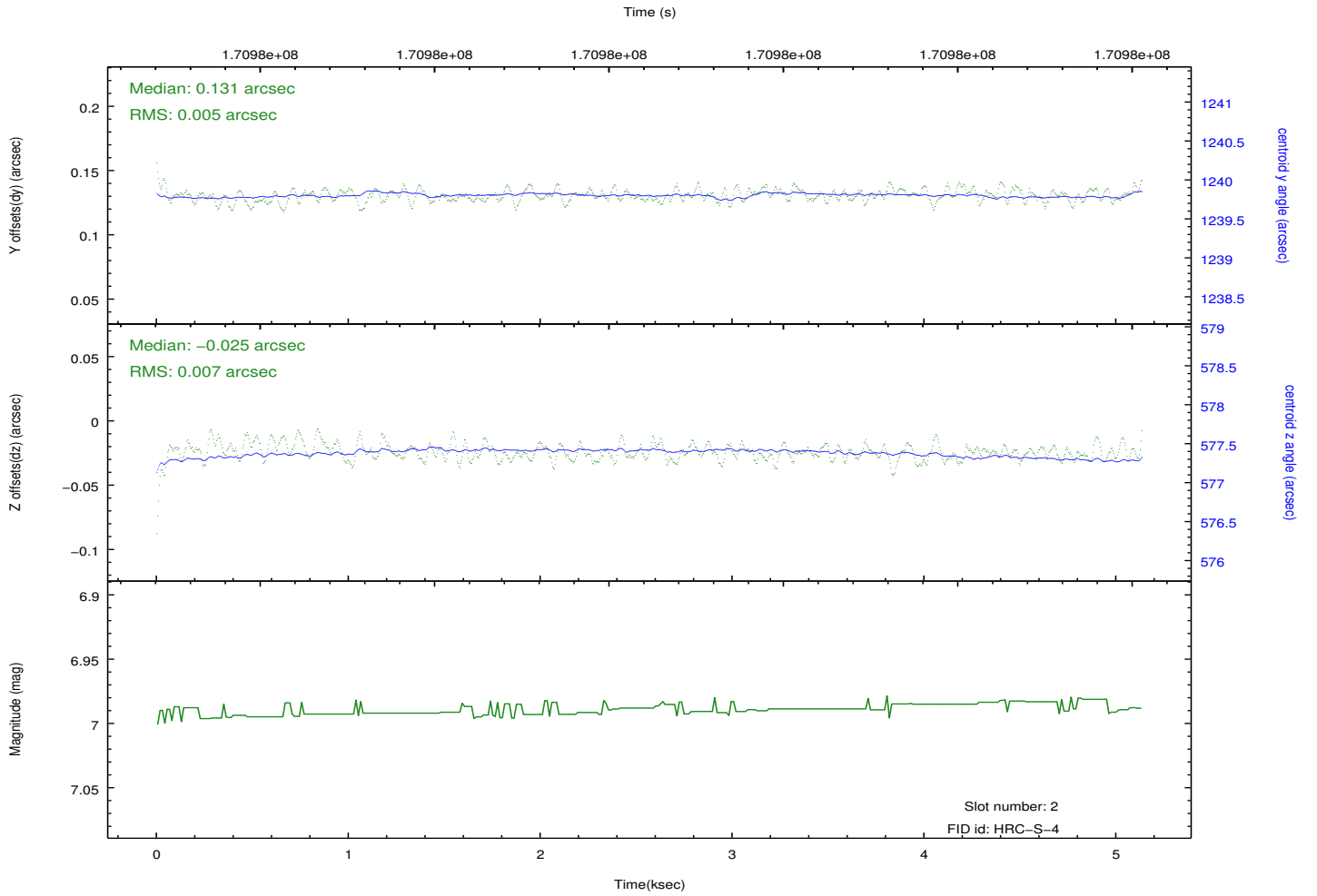
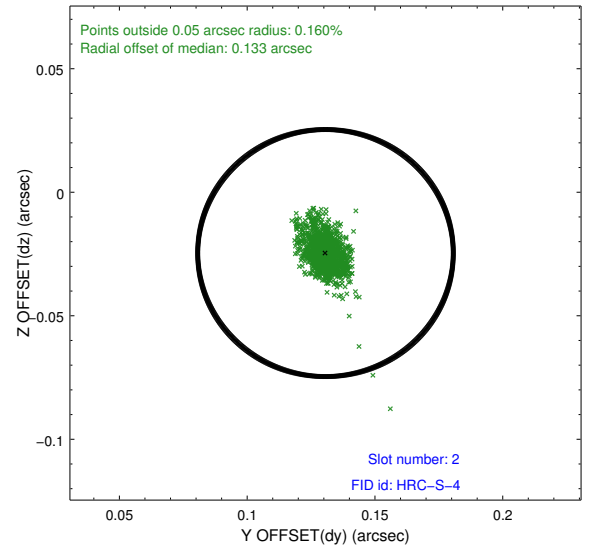
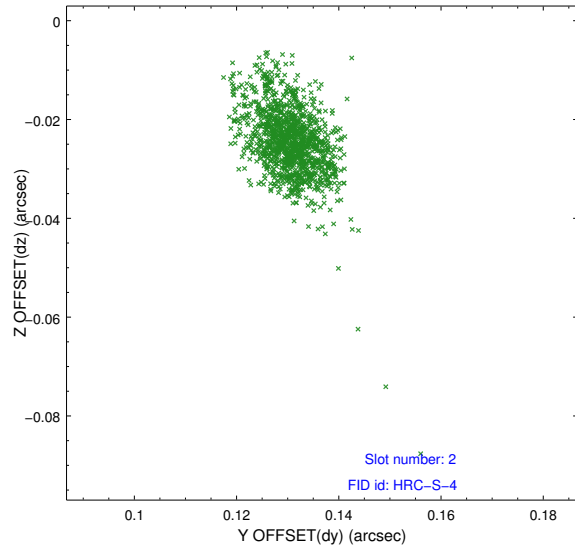
2.5.1 Slot 0



2.5.2 Slot 1

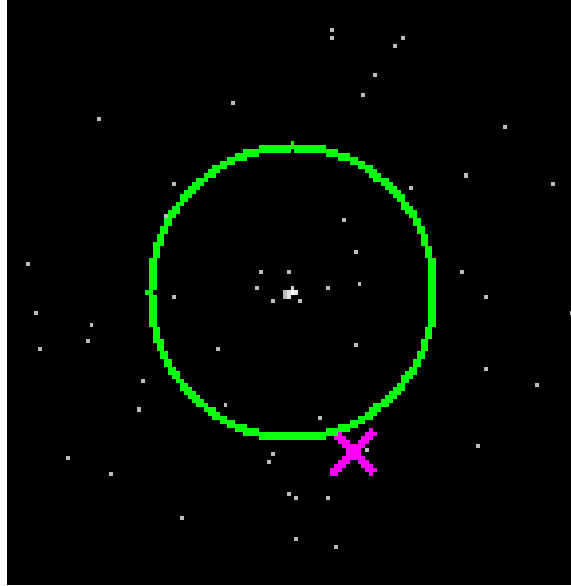


2.5.3 Slot 2

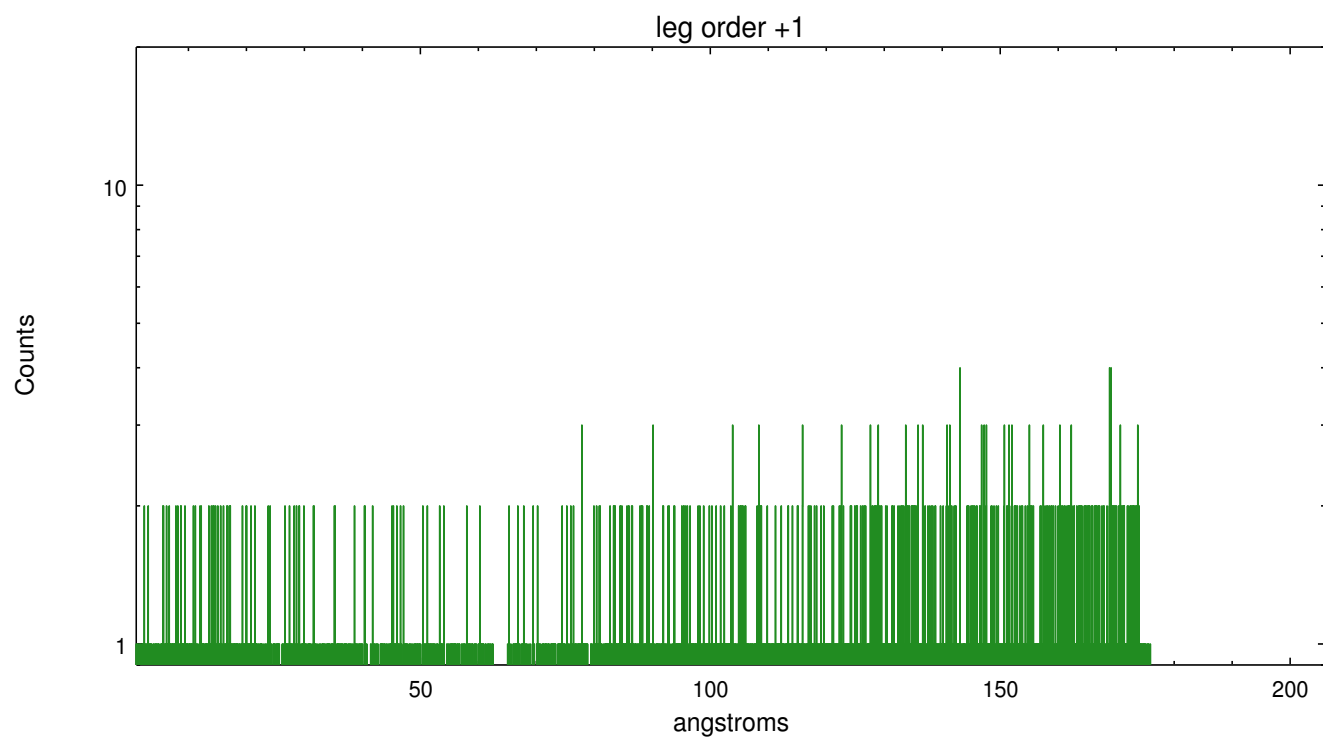
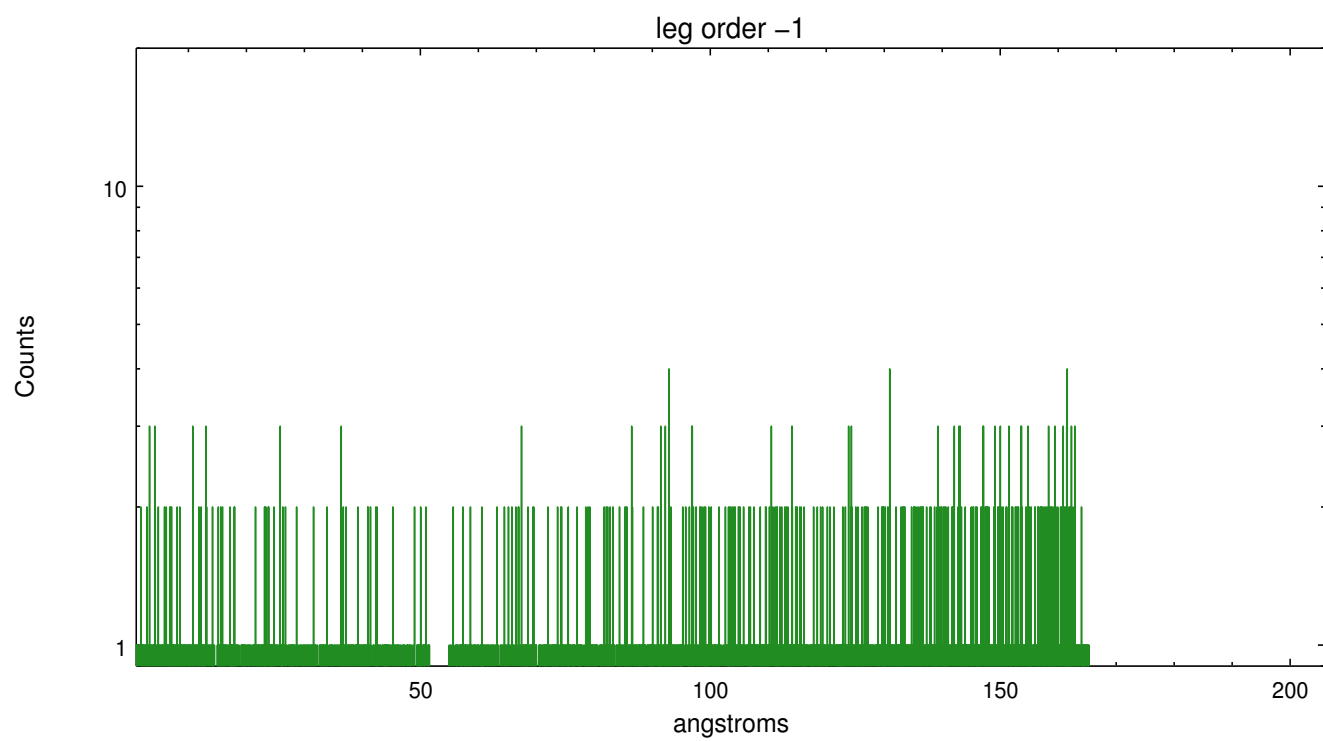


3 Gratings

3.1 LETG Arm



LETG Zero Order



A Summary

A.1 Status

V&V Scientist	Joy Nichols
V&V Date (YYYY-MM-DD)	2012.11.09
V&V Edition	1
V&V Disposition and Status	OK
V&V Charge Time	4.981

A.2 Comments

Observation did not meet requested time window to coordinate with INTEGRAL. It's possible the INTEGRAL schedule changed after the request was entered and the time window was modified to match INTEGRAL.