

V&V Reference Report

L2 ASCDS Version : 7.6.9

Observation 3289 - L2 Version 001
Chandra X-Ray Center

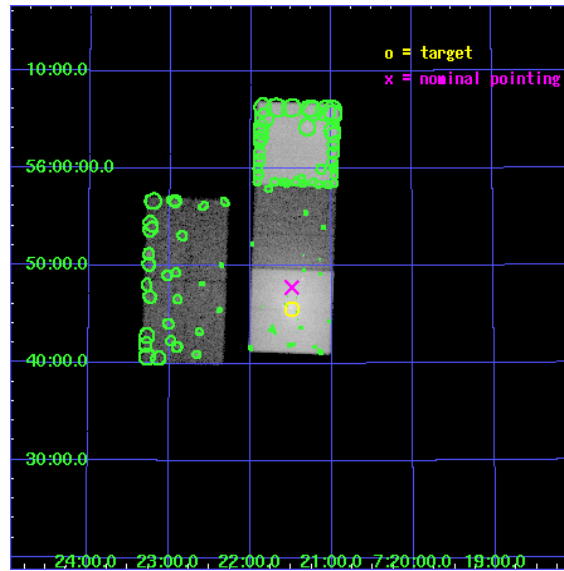
L2 Processing Date : Oct 11 2006

Contents

1	Front	2
2	OBI	3
2.1	OBI	3
2.1.1	Images	3
2.1.2	Bias	3
2.1.3	Parameters	4
2.1.4	Events	4
2.2	Compared Parameters	5
2.3	Aspect	6
2.4	Star Slots	9
2.4.1	Slot 3	9
2.4.2	Slot 4	10
2.4.3	Slot 5	11
2.4.4	Slot 6	12
2.4.5	Slot 7	13
2.5	FID Slots	14
2.5.1	Slot 0	14
2.5.2	Slot 1	15
2.5.3	Slot 2	16
3	Point Sources	17
A	Summary	18
A.1	Status	18
A.2	Comments	18

1 Front

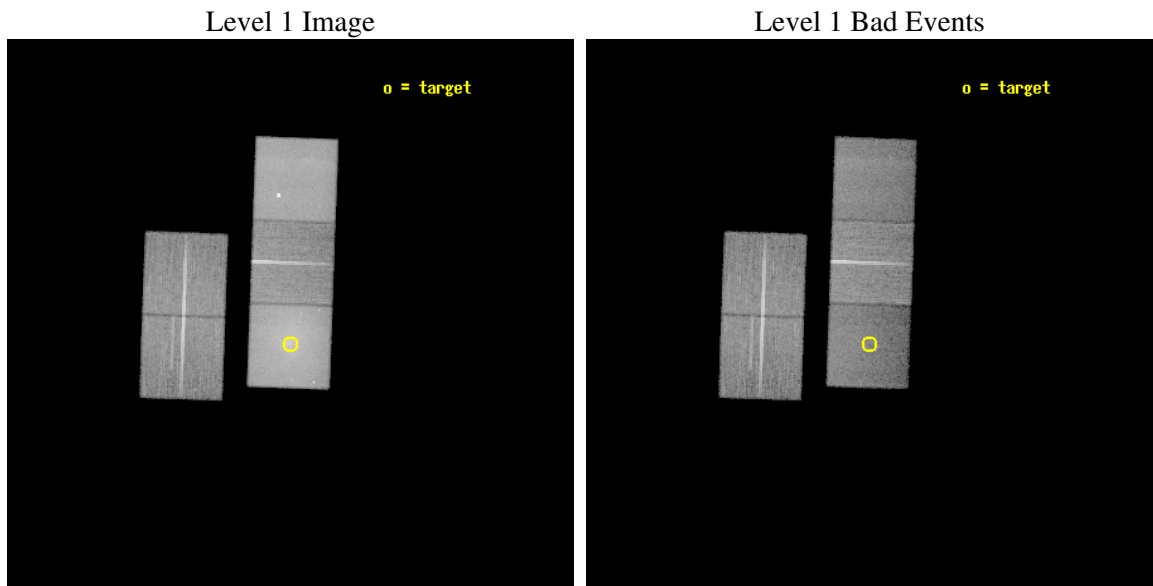
seq_num	800289
obs_id	3289
title	REHEATING THE GAS IN CLUSTER COOLING FLOWS
observer	Dr. Laurence David
object	ABELL 576
dtcycle	0
cycle	P
ra_targ	110.372083
dec_targ	55.759722
ra_nom	110.3728777707
dec_nom	55.797119078474
roll_nom	92.035925876173
revision	2
ontime	39103.399924815
livetime	38592.485217293
ontime2	39093.977024168
ontime3	39097.117994338
ontime5	39103.399924815
ontime6	39100.258954585
ontime7	39103.399924815
l2events	543486



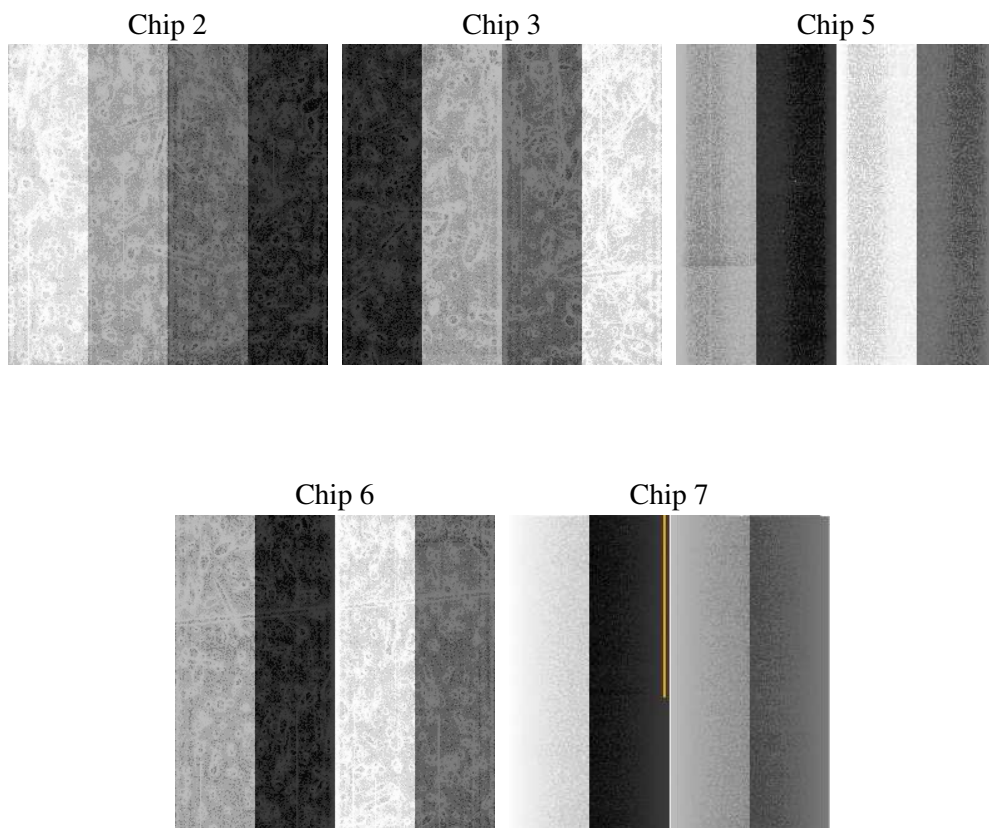
2 OBI

2.1 OBI

2.1.1 Images



2.1.2 Bias



2.1.3 Parameters

obi_num	1
ascdsver	7.6.9
caldbver	3.2.3
date	2006-10-11T20:42:53
revision	2

sched_exp_time	38997.068000
ontime	39108.618955314
ontime2	39099.196034759
ontime3	39102.33700493
ontime5	39108.618955314
ontime6	39105.477965176
ontime7	39108.618955314
l1events	1319160

2.1.4 Events

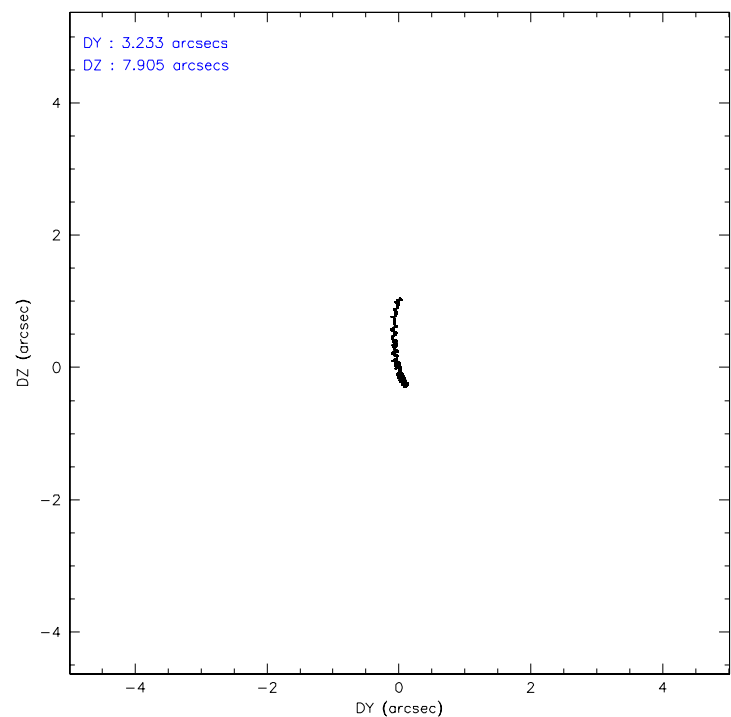
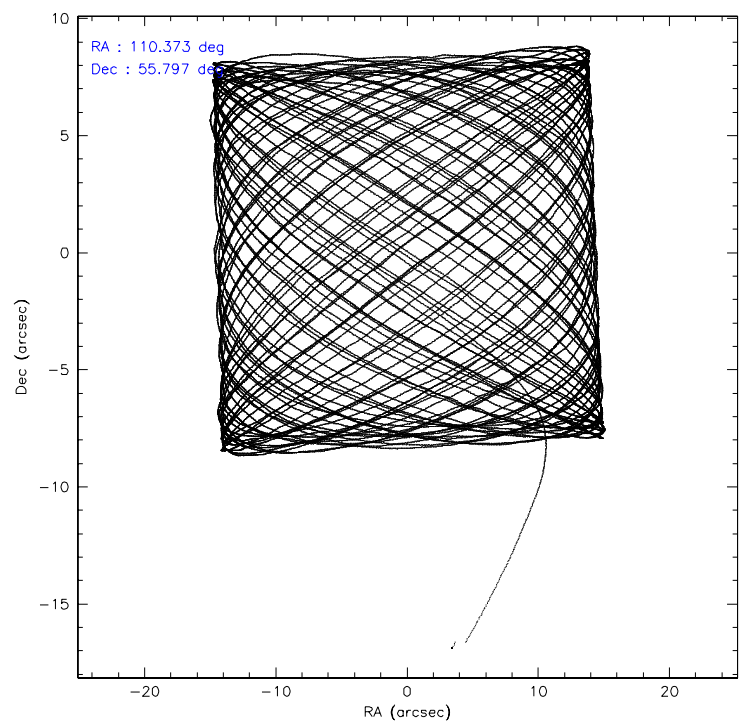
	ccd 2	ccd 3	ccd 5	ccd 6	ccd 7
level 1 events	198610	193470	331313	212344	383423
rejected events	176388	170615	126861	174743	107751
rejected %	88%	88%	38%	82%	28%

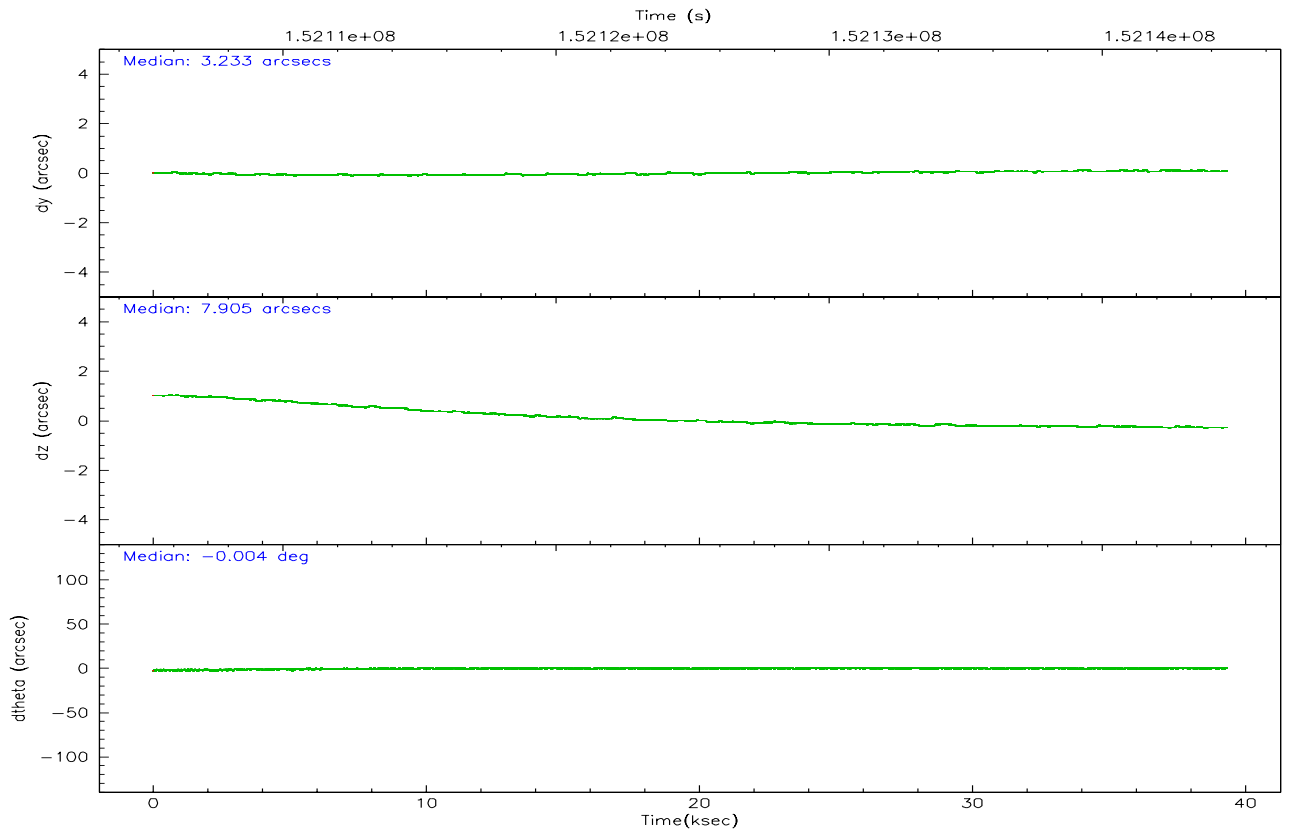
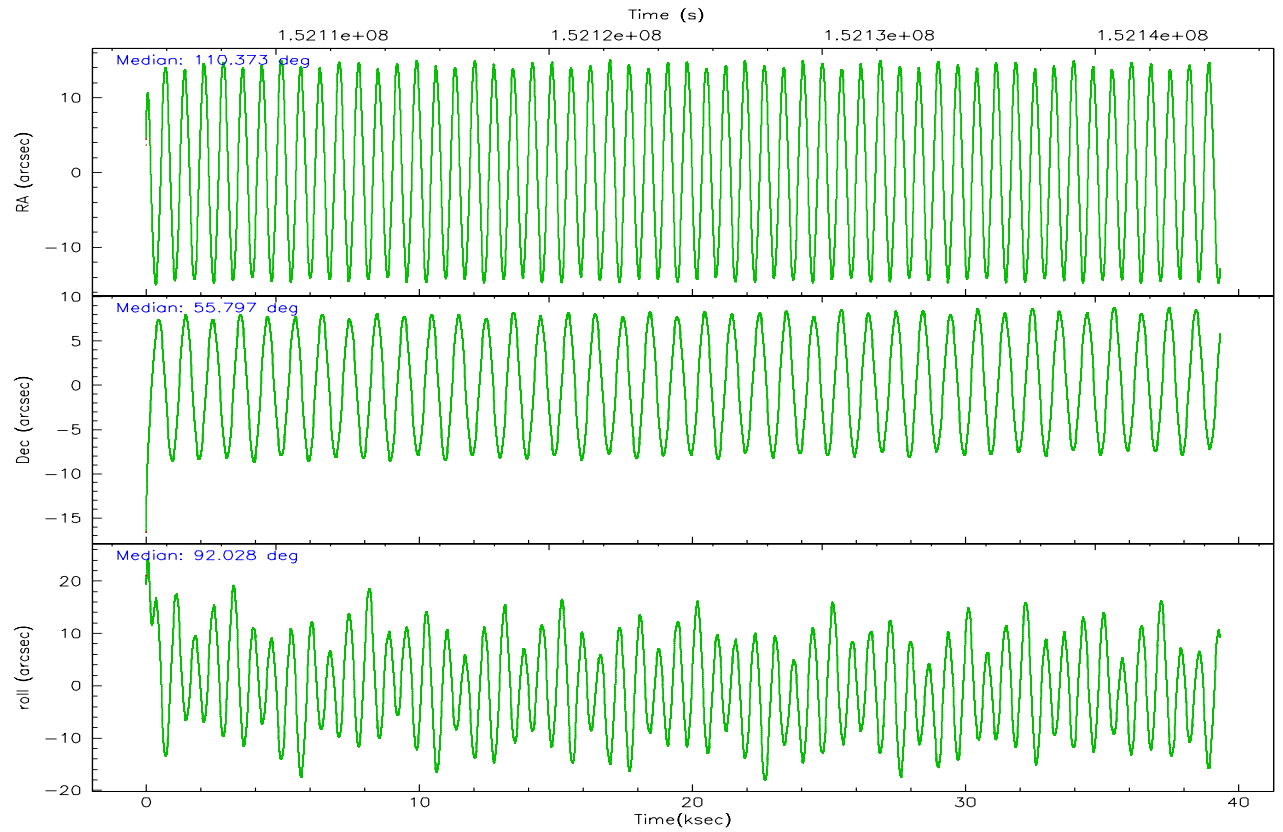
	ccd 2	ccd 3	ccd 5	ccd 6	ccd 7
grade 0 events	10378	11108	20108	22501	42781
	5%	5%	6%	10%	11%
grade 1 events	106	109	73	133	129
	0%	0%	0%	0%	0%
grade 2 events	4434	4118	65661	5630	69212
	2%	2%	19%	2%	18%
grade 3 events	2131	2231	6750	2696	22041
	1%	1%	2%	1%	5%
grade 4 events	2147	2090	6510	2616	22024
	1%	1%	1%	1%	5%
grade 5 events	5156	6132	13805	6397	15924
	2%	3%	4%	3%	4%
grade 6 events	3136	3309	105492	4160	119685
	1%	1%	31%	1%	31%
grade 7 events	171122	164373	112914	168211	91627
	86%	84%	34%	79%	23%

2.2 Compared Parameters

Parameter	Planned	Actual	Parameter	Planned	Actual
Instrument	ACIS	ACIS	Obspar format version number	6	6
Detector	ACIS-23567	ACIS-23567	Obspar file type	PREDICTED	ACTUAL
Grating	NONE	NONE	Obspar update status	NONE	UPDATED
Data mode	VFAINT	VFAINT	Number of optional ACIS chips dropped	0	0
Observation mode	POINTING	POINTING	On-chip summing requested	N	N
Pointing RA	110.399104	110.3728777707047	Subarray requested	NONE	NONE
Pointing Dec	55.774231	55.79711907847403	Alternating exposures requested	N	N
Pointing Roll	91.857614	92.03592587617304	Primary exposure time	0.000000	3.1
SIM focus pos (mm)	-0.684267	-0.6828225247311905			
SIM defocus (mm)	0	0.001444936568705701			
SIM translation stage pos (mm)	-190.132523	-190.1400660498719			
SIM translation stage offset (mm)	0	0.00754346686406393			
Observation start time	152105569.184000	152104522.33135			
Observation start date	2002-10-27T11:31:45	2002-10-27T11:15:22			
Observation end time	152144566.184000	152144881.19553			
Observation end date	2002-10-27T22:21:42	2002-10-27T22:28:01			
Read mode	TIMED	TIMED			

2.3 Aspect



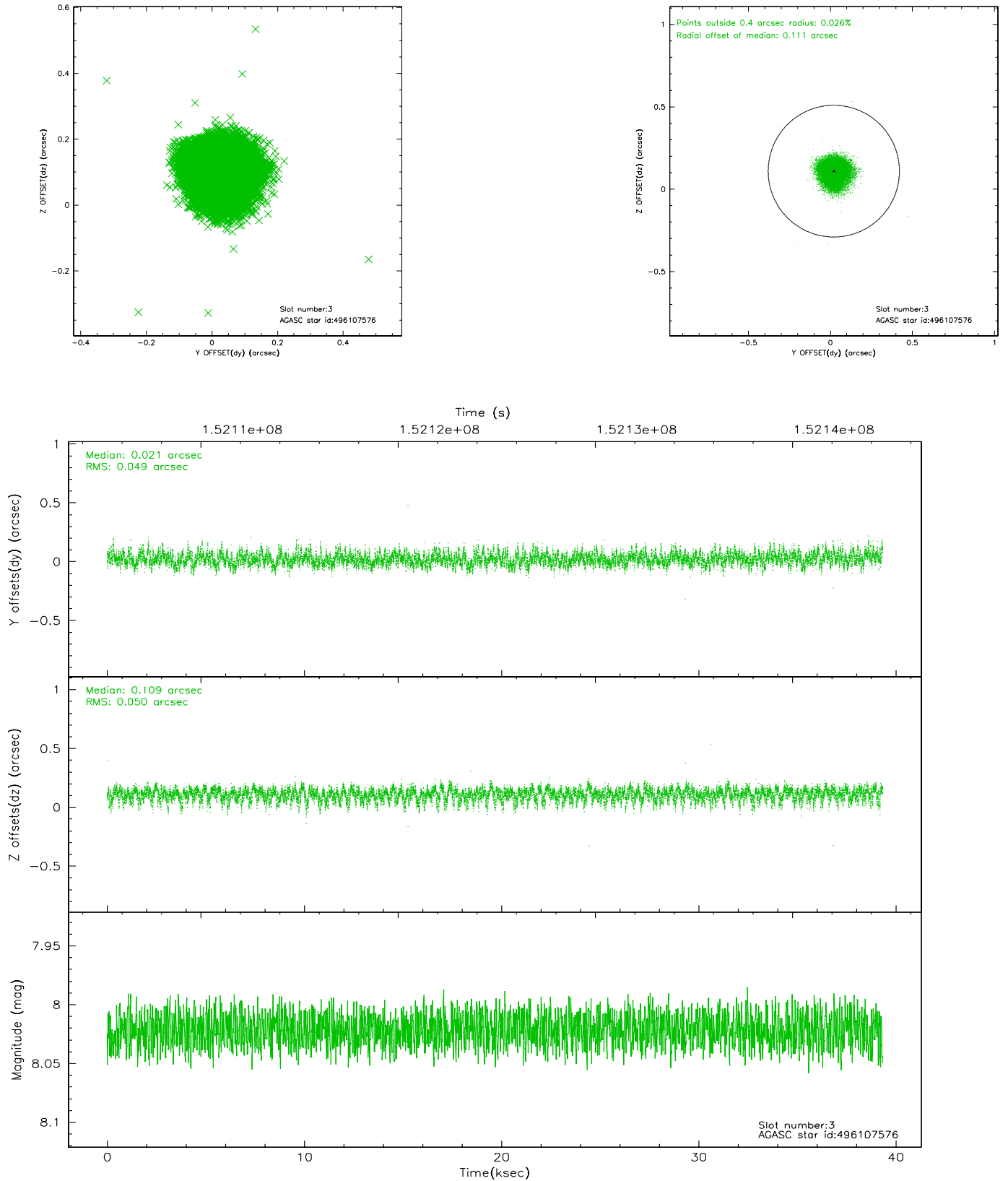


Slot Statistics

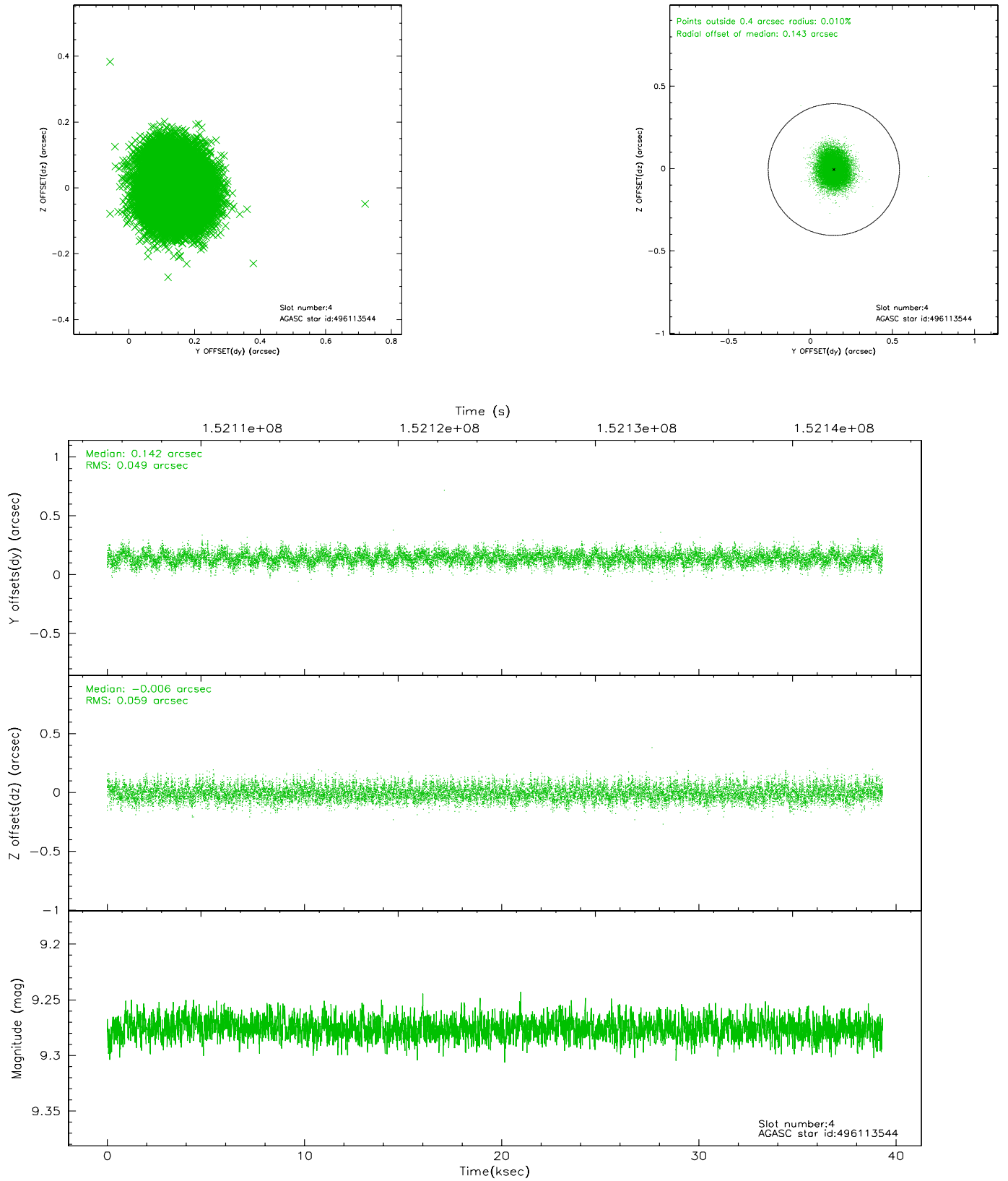
slot	status	id	mag	n_pts	med_dy	med_dz	dr1	dr2	ra	dec	mean_y	mean_z
0	FID	ACIS-S-2	7.11	9595	-0.000	0.013	0.008	0.013	0.000000	0.000000	-755.89	-1729.23
1	FID	ACIS-S-4	7.20	9593	-0.033	-0.003	0.006	0.013	0.000000	0.000000	2157.35	179.20
2	FID	ACIS-S-5	7.24	9593	0.003	-0.001	0.007	0.012	0.000000	0.000000	-1808.70	172.91
3	GUIDE	496107576	8.02	19183	0.021	0.109	0.075	0.118	110.724447	55.340894	-1579.87	-614.81
4	GUIDE	496113544	9.28	19182	0.142	-0.006	0.082	0.132	111.064429	55.460313	-1167.77	-1320.41
5	GUIDE	496115632	9.22	19178	0.091	0.086	0.079	0.127	110.749817	55.481092	-1076.76	-680.56
6	GUIDE	496631856	8.98	19176	-0.184	0.183	0.071	0.117	110.477341	56.296545	1873.41	-216.25
7	GUIDE	495980392	10.10	19162	-0.075	-0.371	0.168	0.265	109.248928	56.110741	1303.83	2267.92

2.4 Star Slots

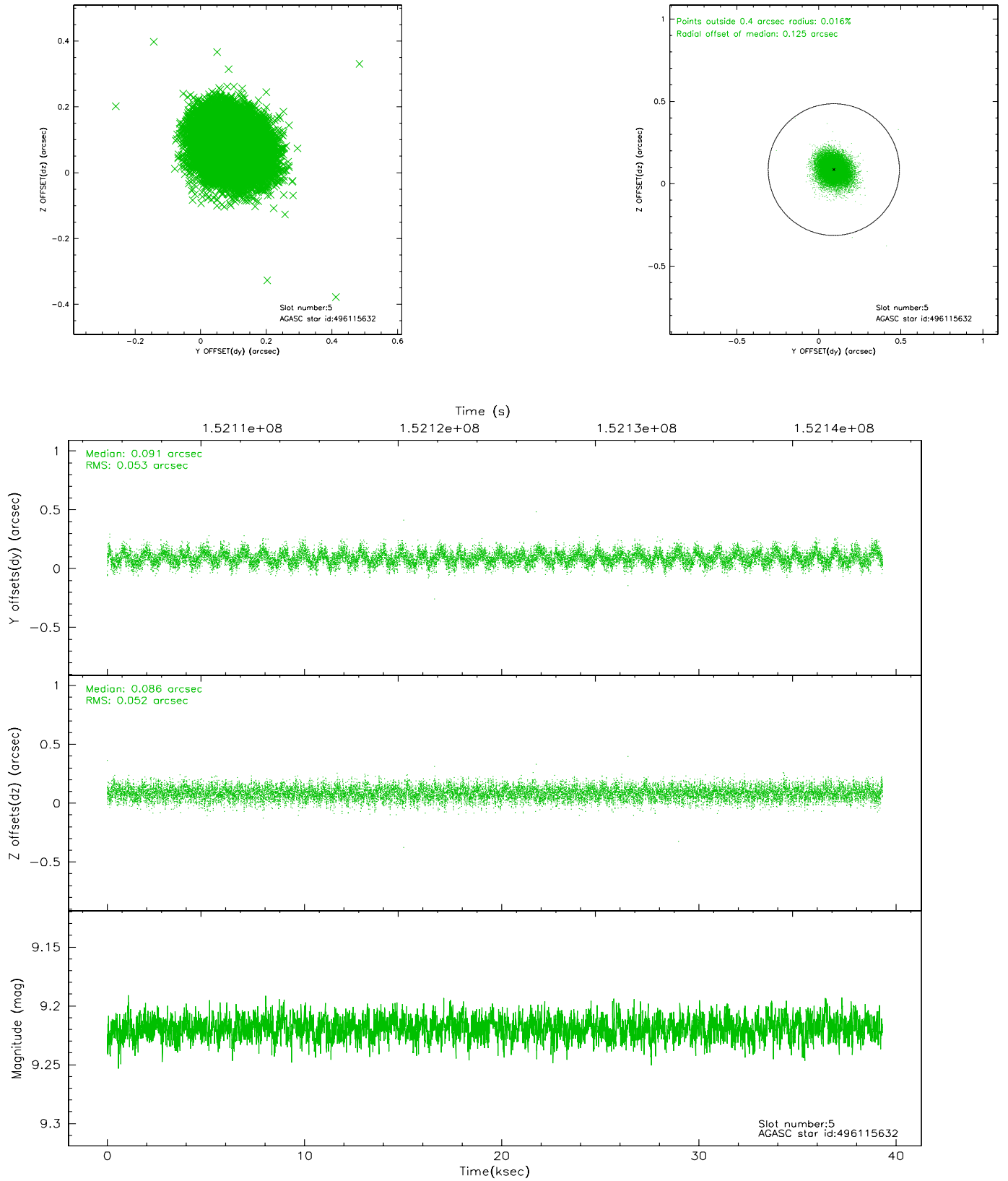
2.4.1 Slot 3



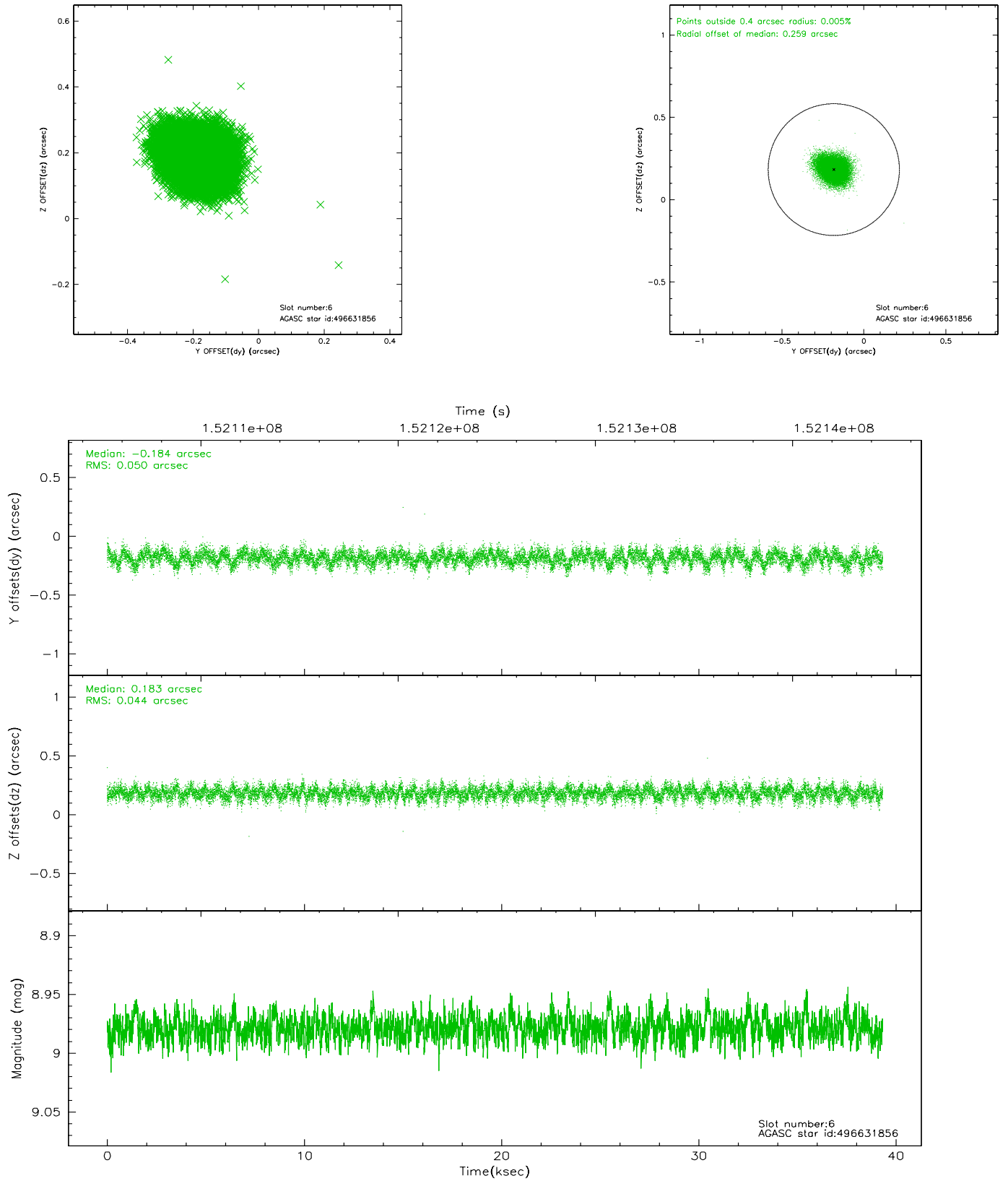
2.4.2 Slot 4



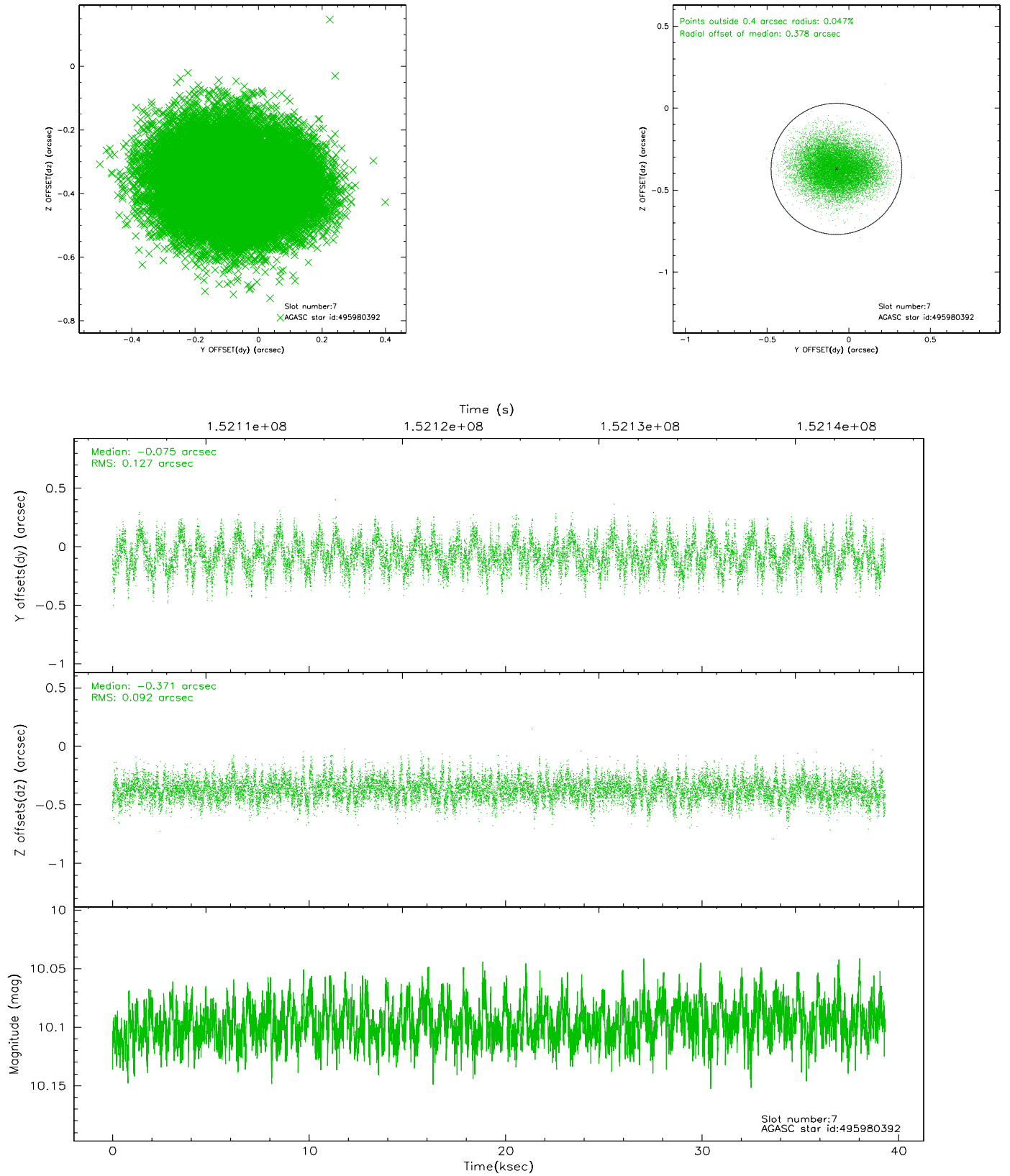
2.4.3 Slot 5



2.4.4 Slot 6

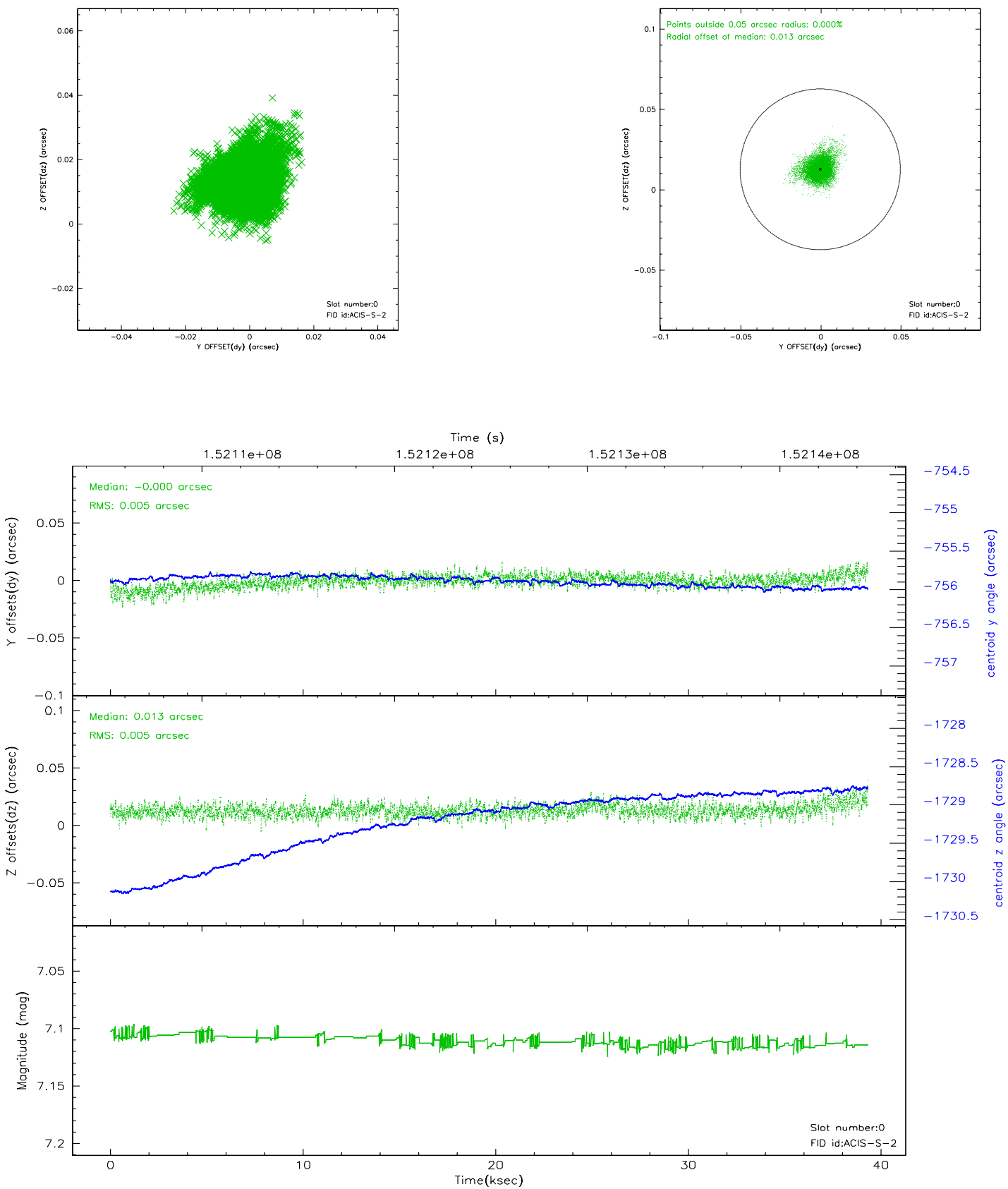


2.4.5 Slot 7

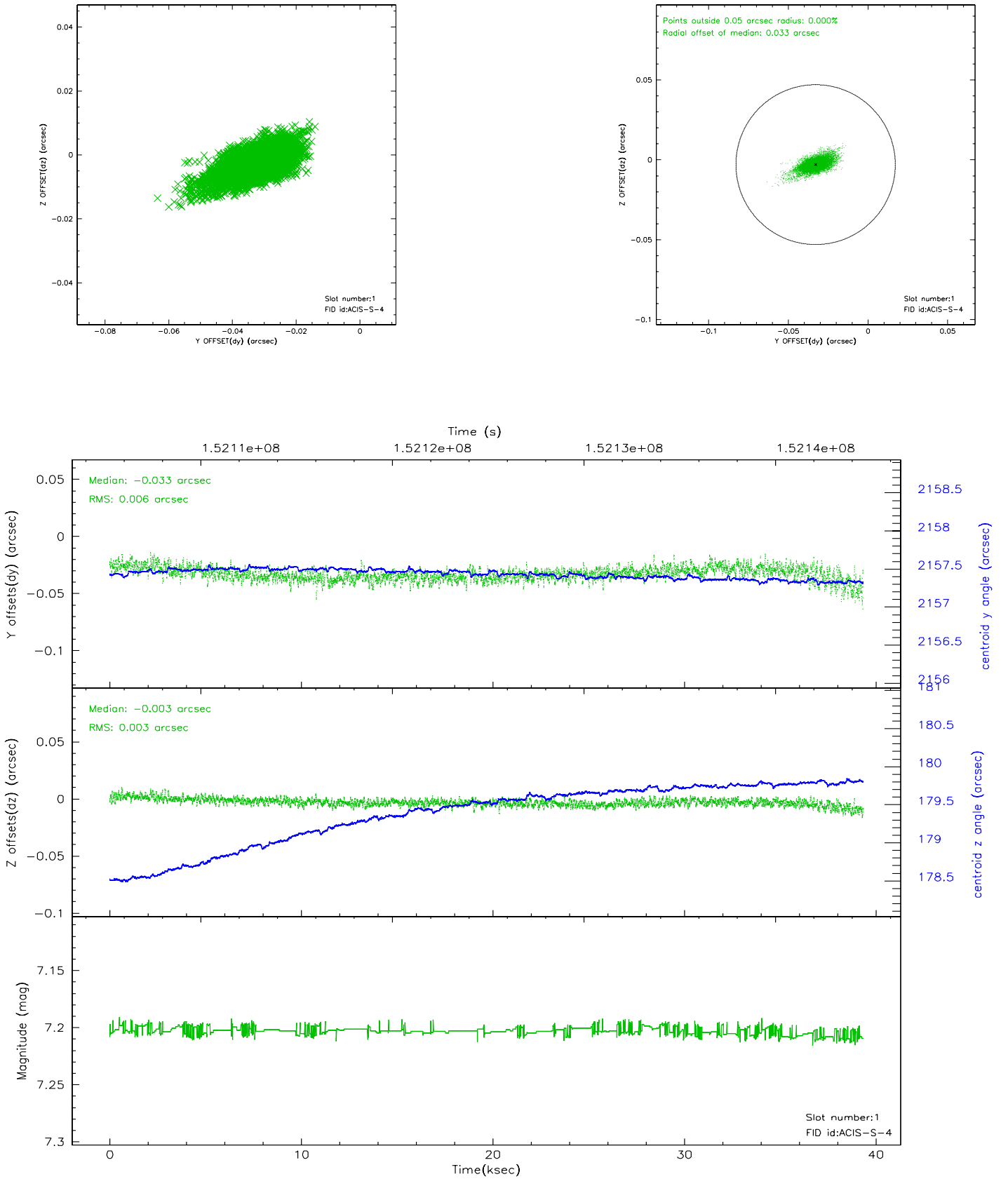


2.5 FID Slots

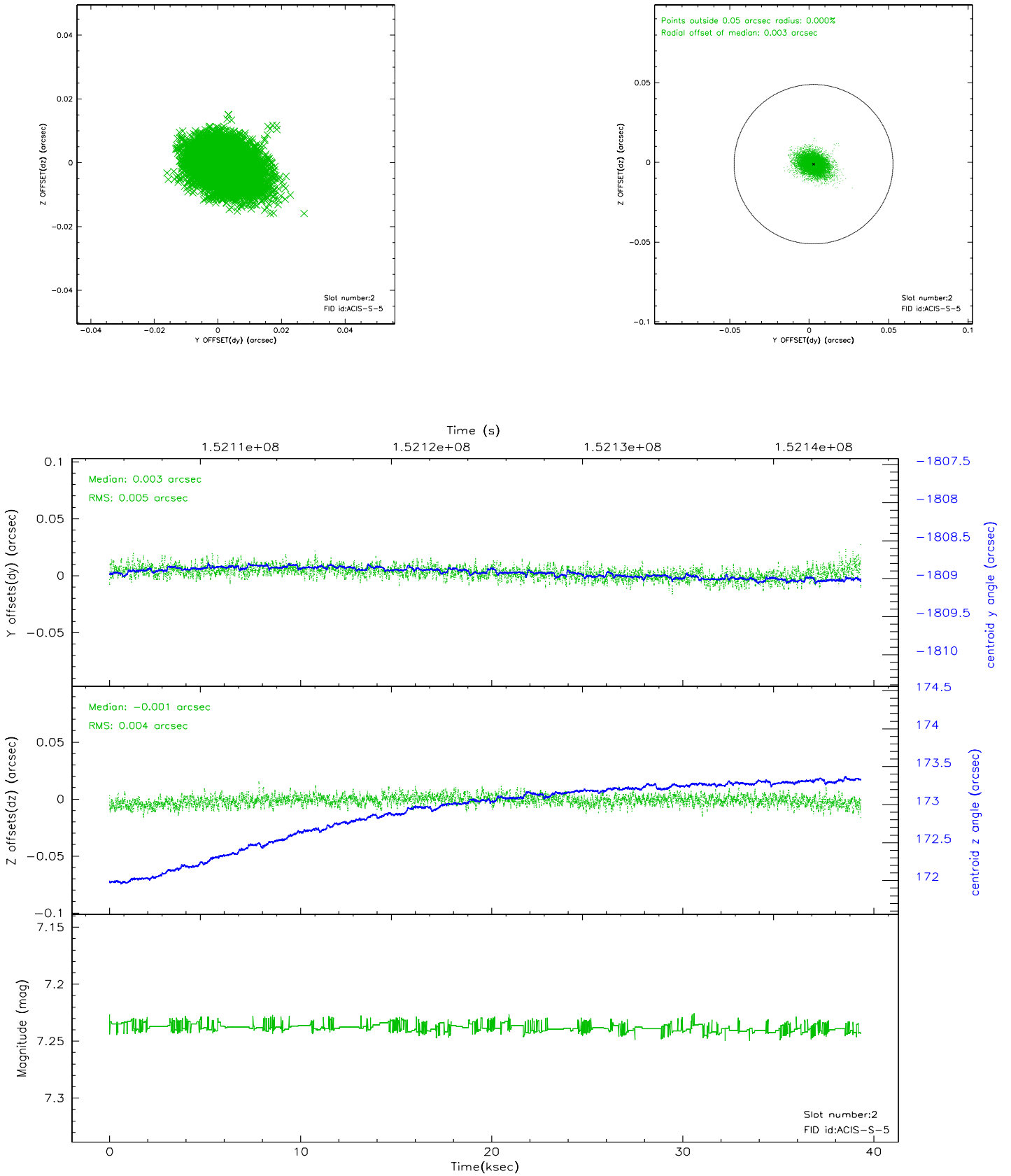
2.5.1 Slot 0



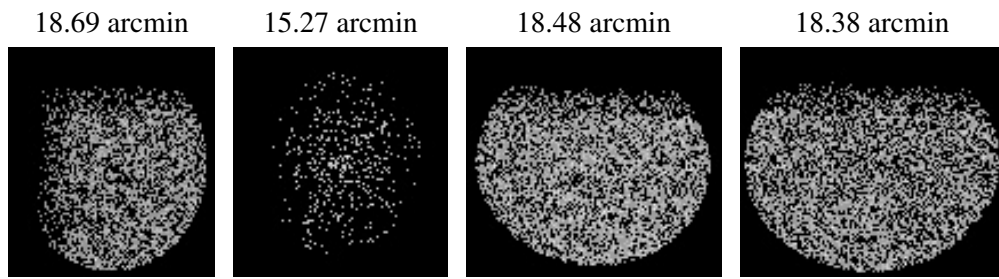
2.5.2 Slot 1



2.5.3 Slot 2



3 Point Sources



A Summary

A.1 Status

V&V Scientist	Jen Lauer
V&V Date (YYYY-MM-DD)	2006.10.12
V&V Edition	1
V&V Disposition and Status	OK
V&V Charge Time	39.103

A.2 Comments