

V&V Reference Report

L2 ASCDS Version : 8.4.5

Observation 2709 - L2 Version 3
Chandra X-Ray Center

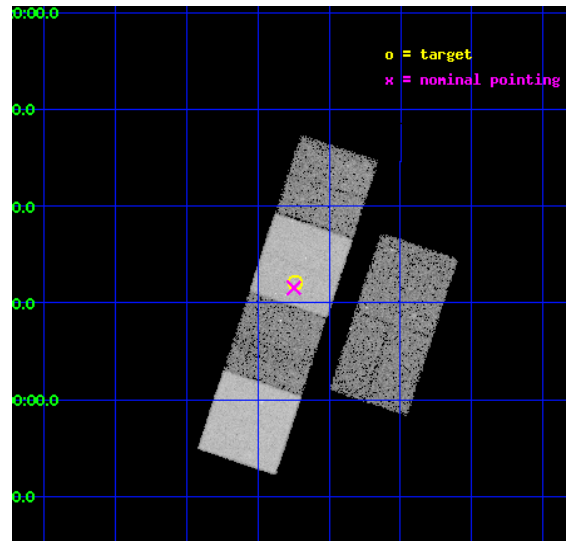
L2 Processing Date : Oct 17 2012

Contents

1	Front	2
2	OBI	3
2.1	OBI	3
2.1.1	Images	3
2.1.2	Bias	3
2.1.3	Parameters	4
2.1.4	Events	4
2.2	Compared Parameters	5
2.3	Aspect	6
2.4	Star Slots	9
2.4.1	Slot 3	9
2.4.2	Slot 4	10
2.4.3	Slot 5	11
2.4.4	Slot 6	12
2.4.5	Slot 7	13
2.5	FID Slots	14
2.5.1	Slot 0	14
2.5.2	Slot 1	15
2.5.3	Slot 2	16
A	Summary	17
A.1	Status	17
A.2	Comments	17

1 Front

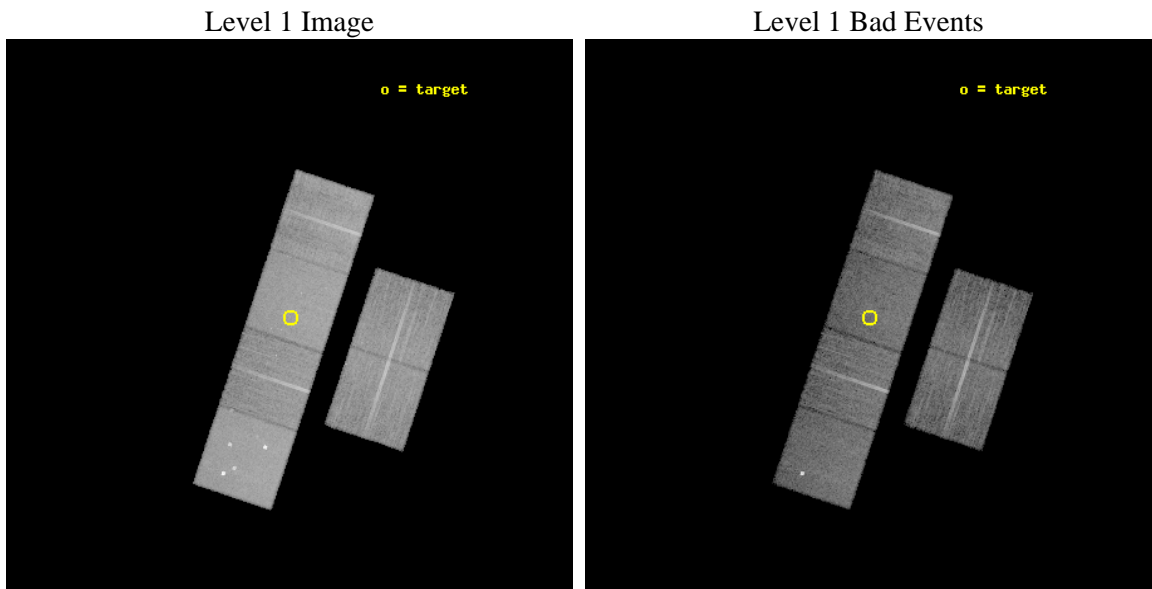
seq_num	400189	Sequence number
obs_id	2709	Observation id
title	THE HIGH LATITUDE NEUTRON STAR X-RAY TRANSIENT XTE J2123-058	Propo
observer	Dr. John Tomsick	Principal investigator
object	XTE J2123-058	Source name
dtcycle	0	
cycle	P	events from which exps? Prim/Second/Both
ra_targ	320.810417	Observer's specified target RA [deg]
dec_targ	-5.798028	Observer's specified target Dec [deg]
ra_nom	320.81182806606	Nominal RA [deg]
dec_nom	-5.8076028754216	Nominal Dec [deg]
roll_nom	288.34156719617	Nominal Roll [deg]
revision	3	Processing version of data
ontime	17932.210270286	Sum of GTIs [s]
livetime	17705.141826363	Livetime [s]
ontime2	17932.251310289	Sum of GTIs [s]
ontime3	17932.087150276	Sum of GTIs [s]
ontime5	17932.169230282	Sum of GTIs [s]
ontime6	17932.128190279	Sum of GTIs [s]
ontime7	17932.210270286	Sum of GTIs [s]
ontime8	17932.046110302	Sum of GTIs [s]
l2events	172395	Number of level 2 events



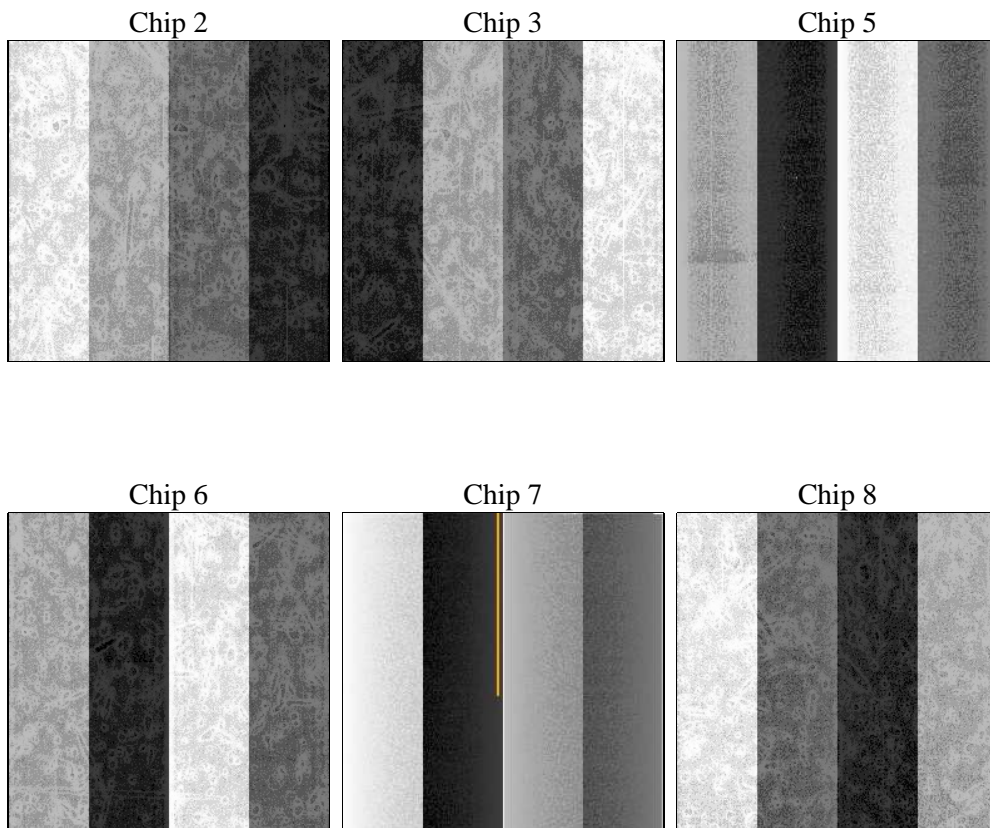
2 OBI

2.1 OBI

2.1.1 Images



2.1.2 Bias



2.1.3 Parameters

obi_num	1	Obi number	sched_exp_time	18000.000000	[s] Scheduled observation exposure time
ascdsver	8.4.5	Processing system revision	ontime	17932.210270286	Sum of GTIs [s]
caldsver	4.5.2	 	ontime2	17932.251310289	Sum of GTIs [s]
date	2012-10-17T12:06:56	Date and time of file creation	ontime3	17932.087150276	Sum of GTIs [s]
revision	3	Processing version of data	ontime5	17932.169230282	Sum of GTIs [s]
			ontime6	17932.128190279	Sum of GTIs [s]
			ontime7	17932.210270286	Sum of GTIs [s]
			ontime8	17932.046110302	Sum of GTIs [s]
			l1events	776799	Number of level 1 events

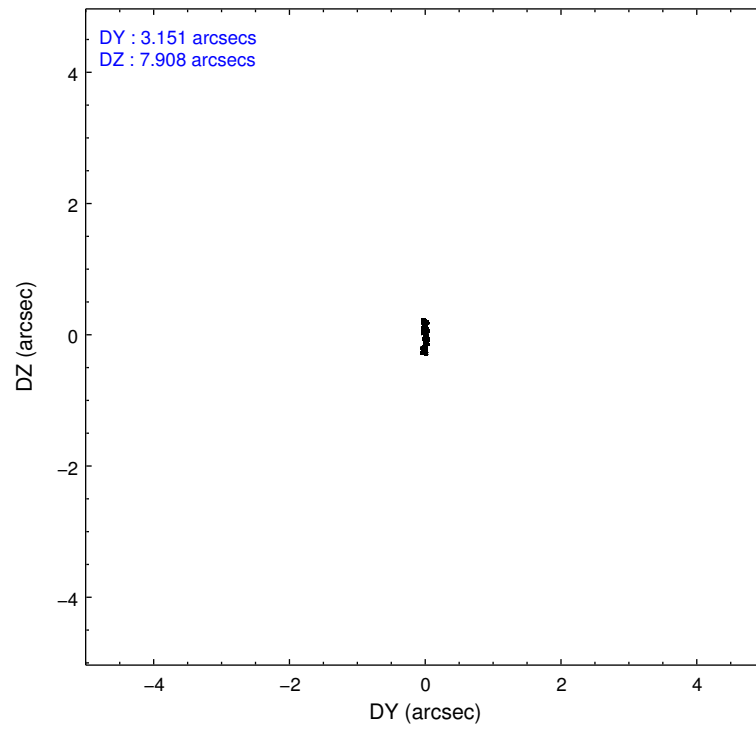
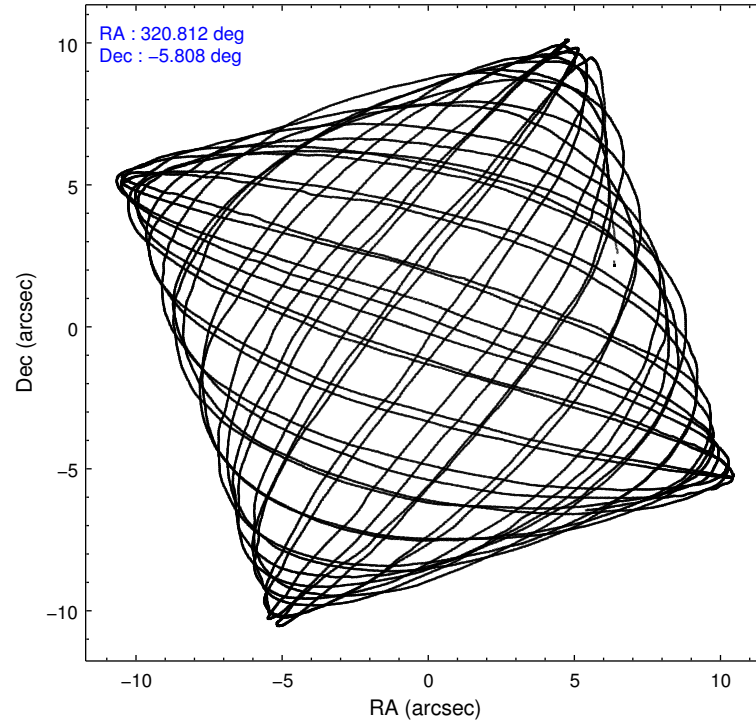
2.1.4 Events

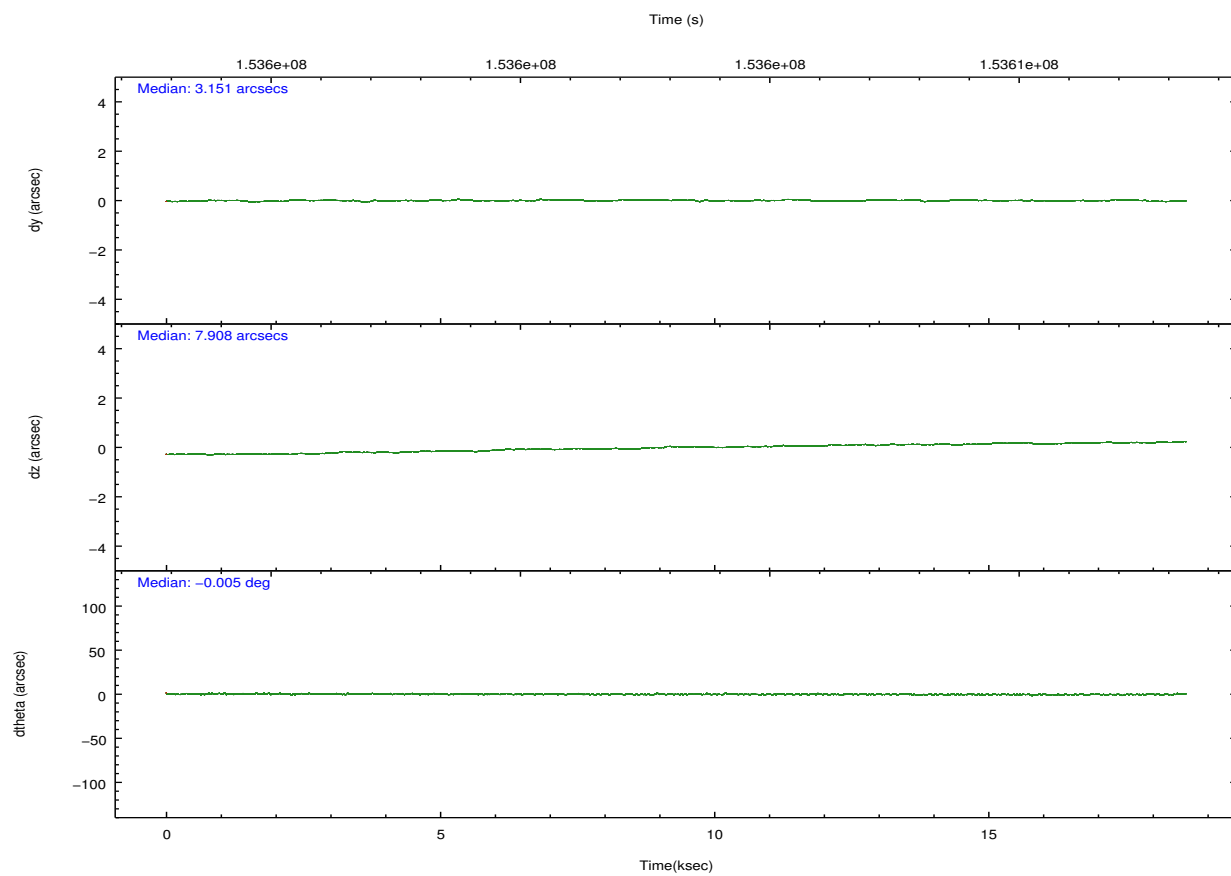
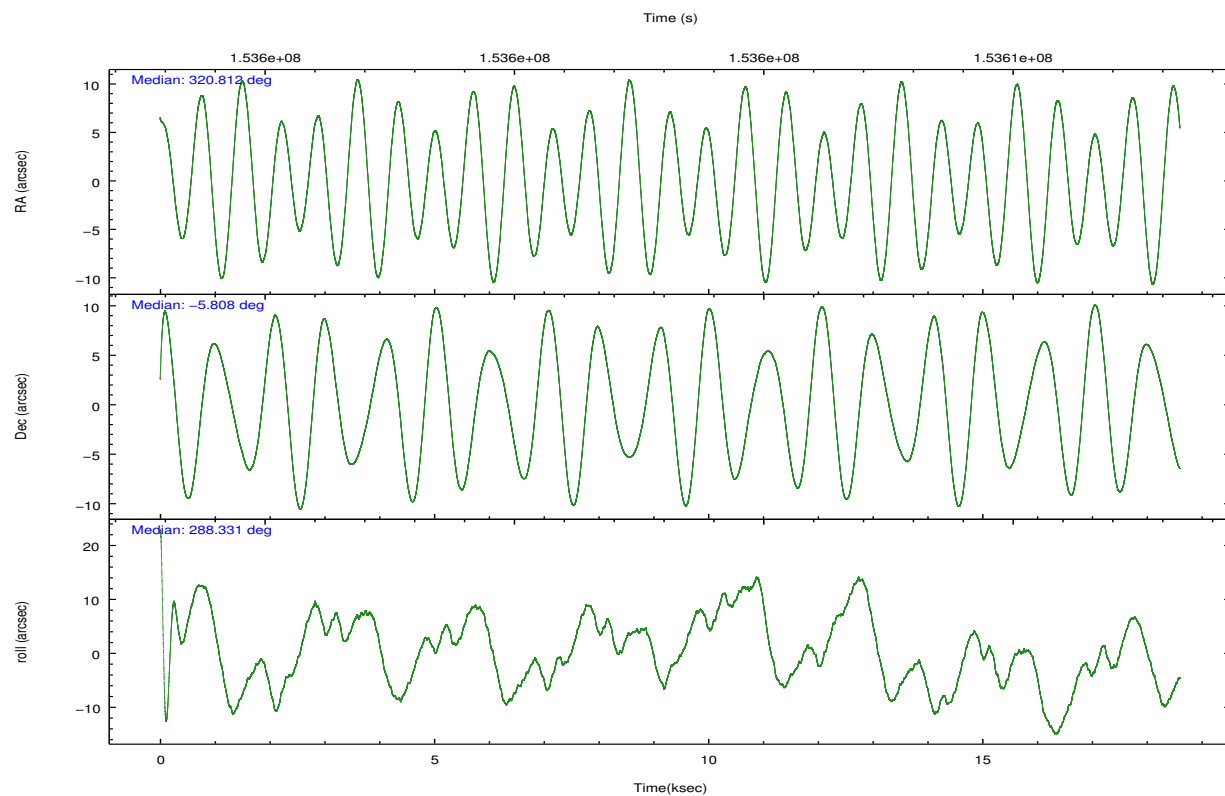
	ccd 2	ccd 3	ccd 5	ccd 6	ccd 7	ccd 8		ccd 2	ccd 3	ccd 5	ccd 6	ccd 7	ccd 8
level 1 events	109657	106704	168548	108875	145031	137984	grade 0 events	5677	5446	13135	5243	5496	9303
rejected events	96836	94313	88752	95880	85170	109155		5%	5%	7%	4%	3%	6%
rejected %	88%	88%	52%	88%	58%	79%	grade 1 events	60	62	224	53	132	85
								0%	0%	0%	0%	0%	0%
							grade 2 events	2590	2328	22867	2548	11947	6164
								2%	2%	13%	2%	8%	4%
							grade 3 events	1216	1225	2920	1322	5265	3135
								1%	1%	1%	1%	3%	2%
							grade 4 events	1224	1267	2940	1305	5322	2906
								1%	1%	1%	1%	3%	2%
							grade 5 events	4168	4602	11755	4808	13751	6187
								3%	4%	6%	4%	9%	4%
							grade 6 events	2116	2129	37951	2583	31843	7328
								1%	1%	22%	2%	21%	5%
							grade 7 events	92606	89645	76756	91013	71275	102876
								84%	84%	45%	83%	49%	74%

2.2 Compared Parameters

Parameter	Planned	Actual	Parameter	Planned	Actual
Instrument	ACIS	ACIS	Obspar format version number	7	7
Detector	ACIS-235678	ACIS-235678	Obspar file type	PREDICTED	ACTUAL
Grating	NONE	NONE	Obspar update status	NONE	UPDATED
Data mode	FAINT	FAINT	Number of optional ACIS chips dropped	0	0
Observation mode	POINTING	POINTING	On-chip summing requested	N	N
[deg] Pointing RA	320.791113	320.8118280660646	Subarray requested	NONE	NONE
[deg] Pointing Dec	-5.789773	-5.807602875421566	Alternating exposures requested	N	N
[deg] Pointing Roll	288.182817	288.3415671961652	[s] Primary exposure time	0.000000	3.2
[mm] SIM focus pos	-0.684267	-0.6828225247311905			
[mm] SIM defocus	0	0.001444936568705701			
[mm] SIM translation stage pos	-190.132523	-190.1425803651734			
[mm] SIM translation stage offset	0	0.01005778216563158			
[s] Observation start time (MET)	153594419.184000	153593251.35576			
Observation start date	2002-11-13T17:05:55	2002-11-13T16:47:31			
[s] Observation end time (MET)	153612419.184000	153612975.94408			
Observation end date	2002-11-13T22:05:55	2002-11-13T22:16:15			
Read mode	TIMED	TIMED			

2.3 Aspect



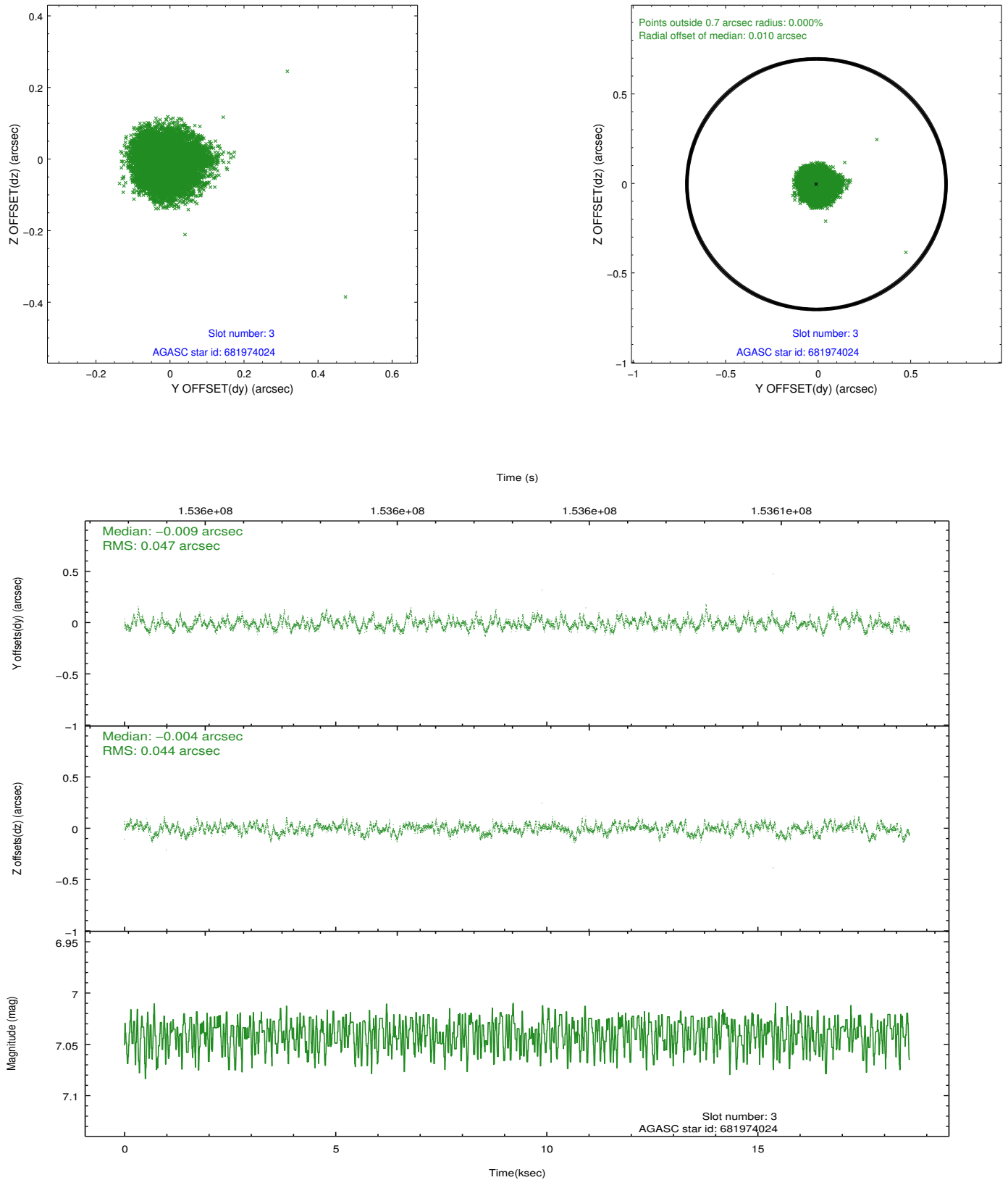


Slot Statistics

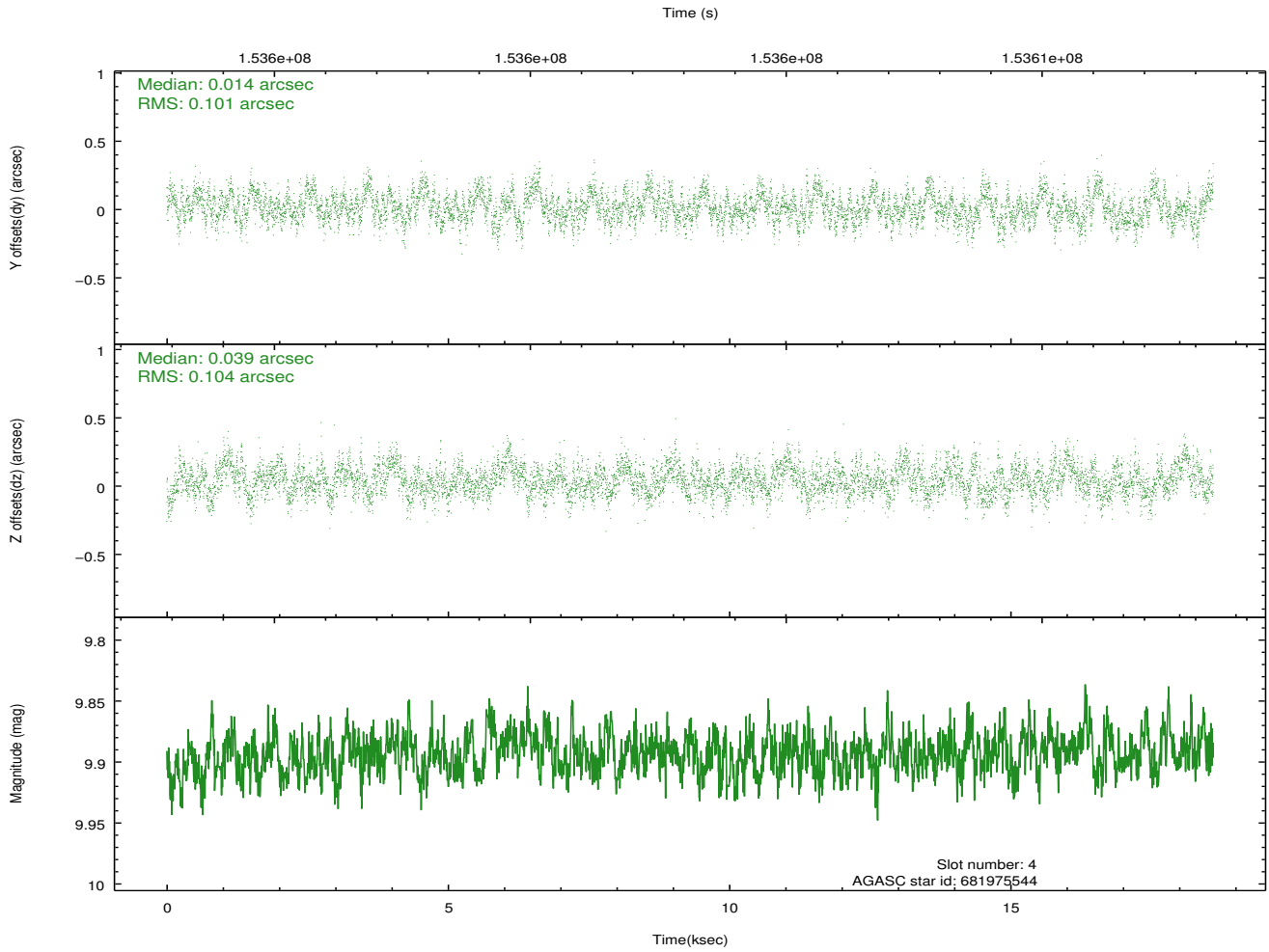
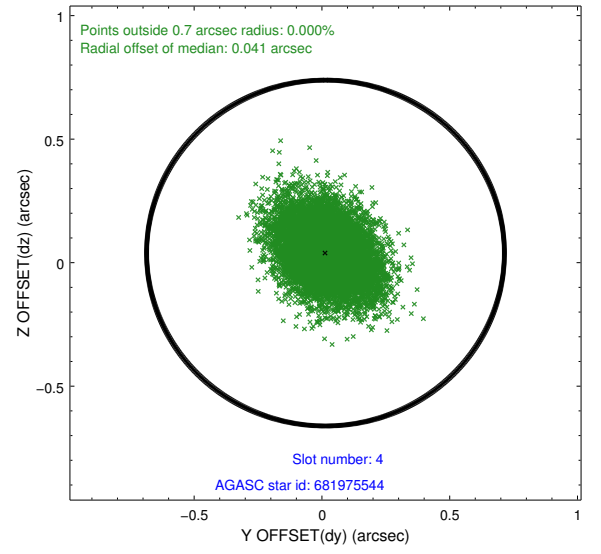
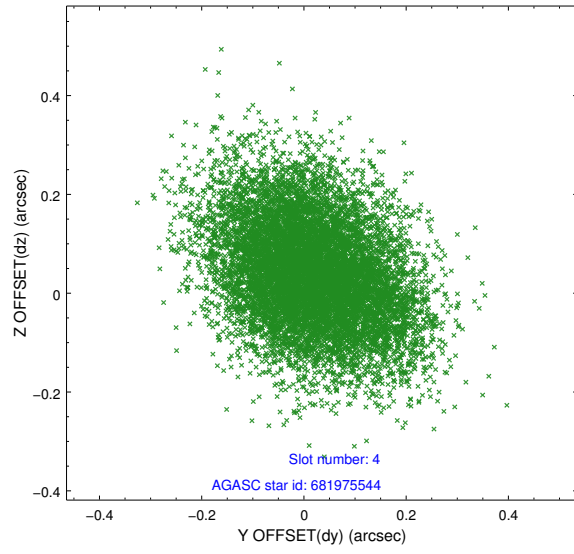
slot	status	id	mag	n_pts	med_dy	med_dz	dr1	dr2	ra	dec	mean_y	mean_z
0	FID	ACIS-S-1	7.19	4538	0.047	-0.029	0.009	0.015	0.000000	0.000000	940.26	-1724.69
1	FID	ACIS-S-5	7.24	4536	-0.040	0.049	0.006	0.010	0.000000	0.000000	-1808.67	172.76
2	FID	ACIS-S-6	7.36	4535	-0.028	-0.009	0.010	0.016	0.000000	0.000000	405.55	816.87
3	GUIDE	681974024	7.04	9071	-0.009	-0.004	0.070	0.107	321.178430	-5.581308	-280.00	1552.02
4	GUIDE	681975544	9.89	9068	0.014	0.039	0.154	0.252	321.128432	-5.005667	-2304.79	2029.51
5	GUIDE	682496328	8.45	9069	0.027	0.071	0.072	0.116	321.279739	-5.699757	238.16	1763.73
6	GUIDE	681847232	10.01	8997	-0.025	0.012	0.155	0.251	320.011090	-5.587544	-1561.98	-2429.14
7	GUIDE	681845088	8.89	9071	-0.010	-0.121	0.089	0.138	320.406640	-5.318699	-2041.14	-781.47

2.4 Star Slots

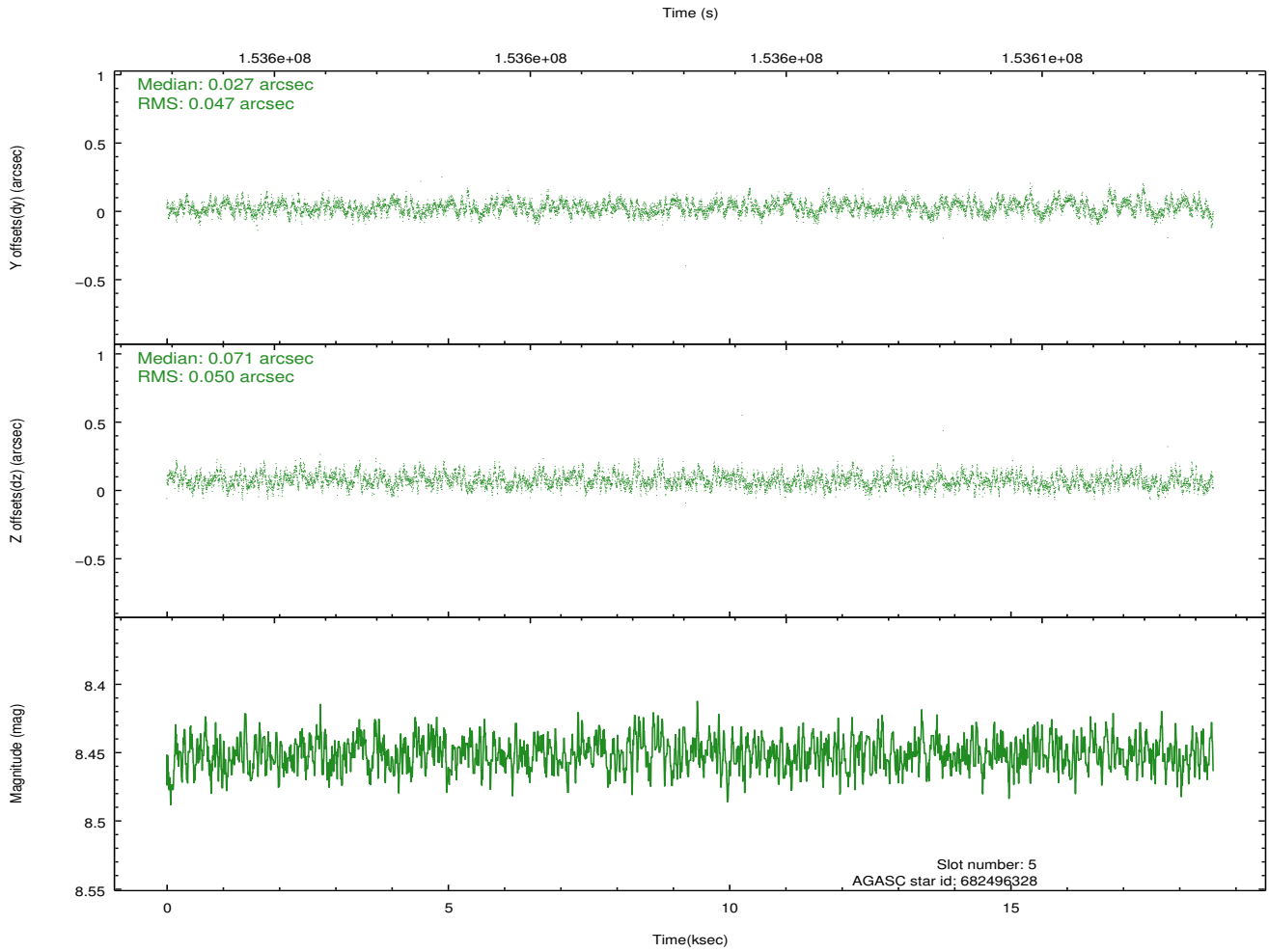
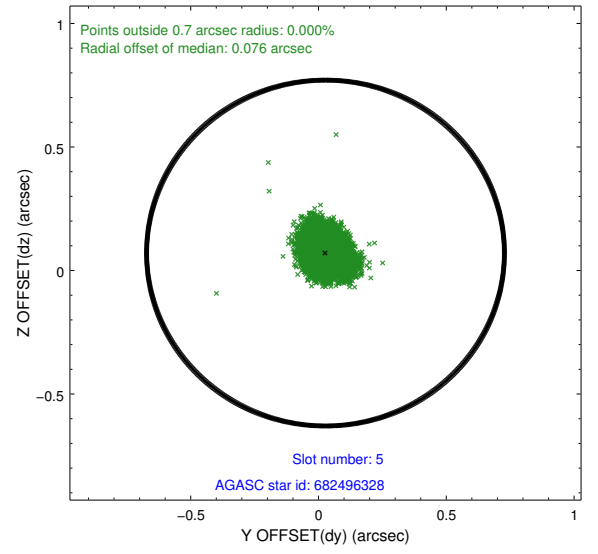
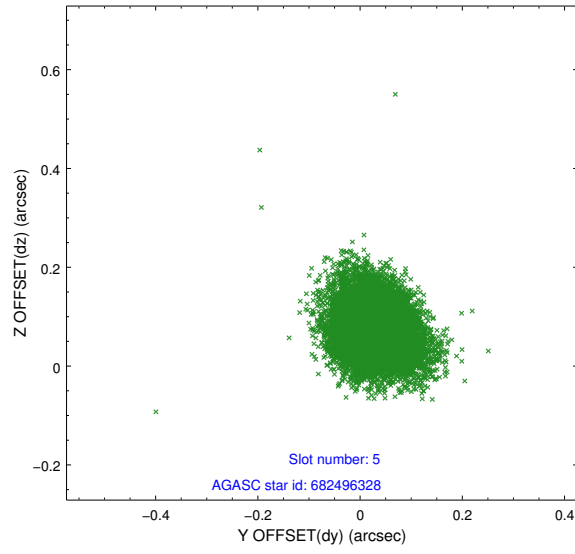
2.4.1 Slot 3



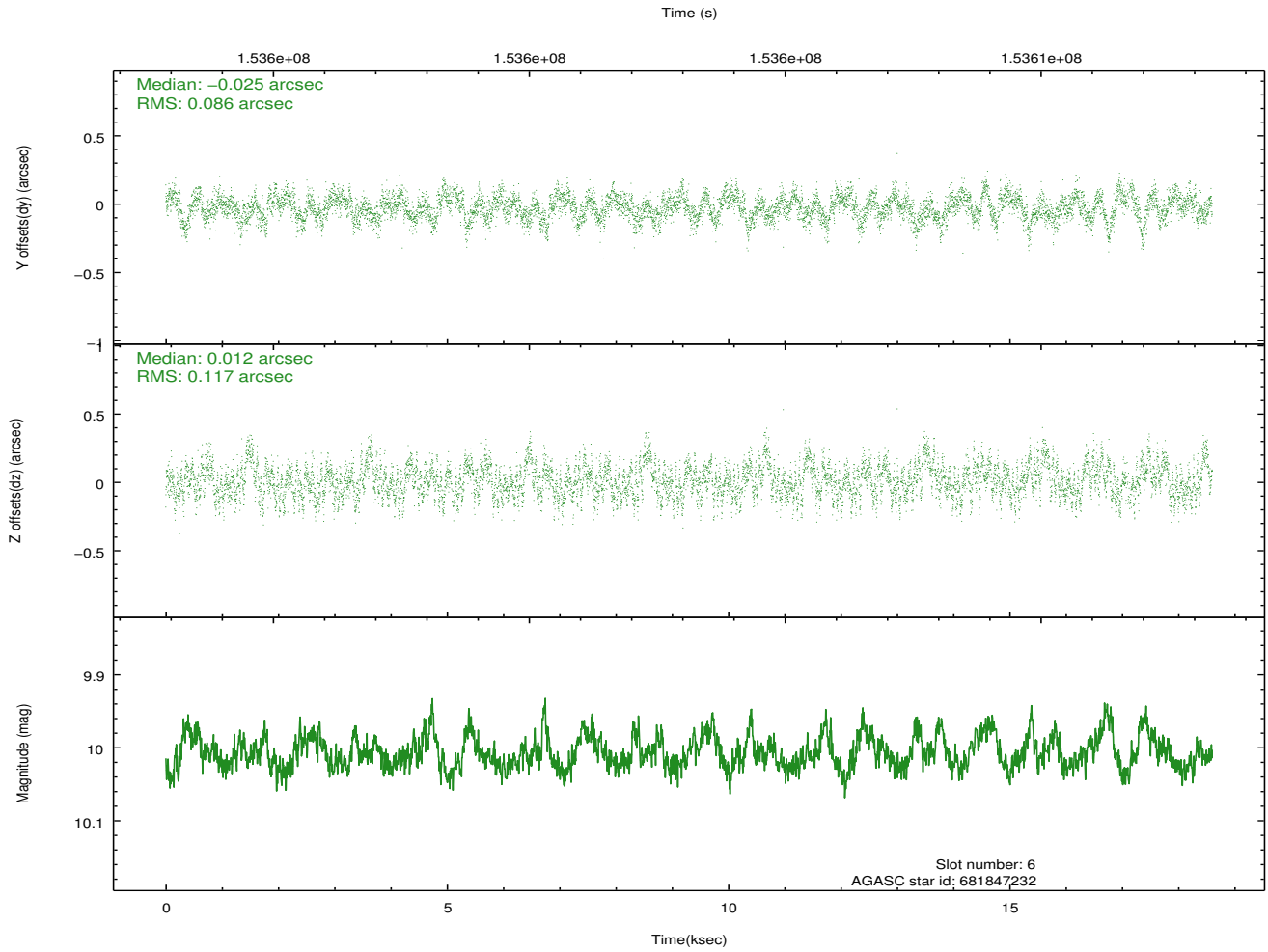
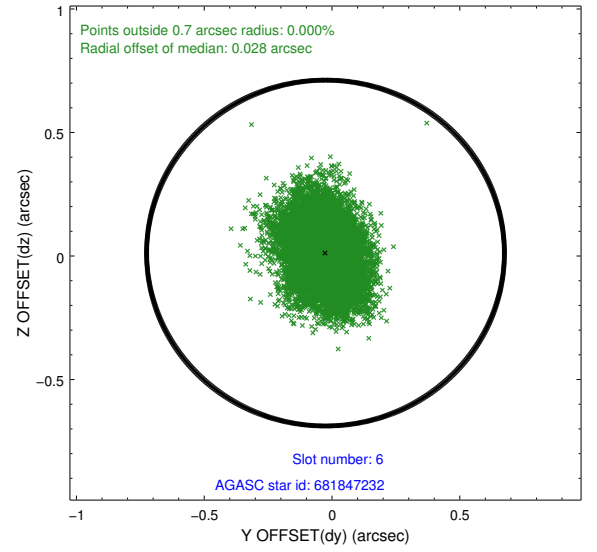
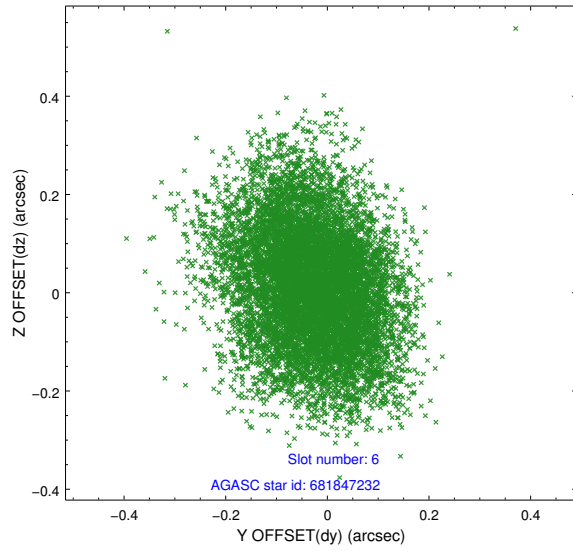
2.4.2 Slot 4



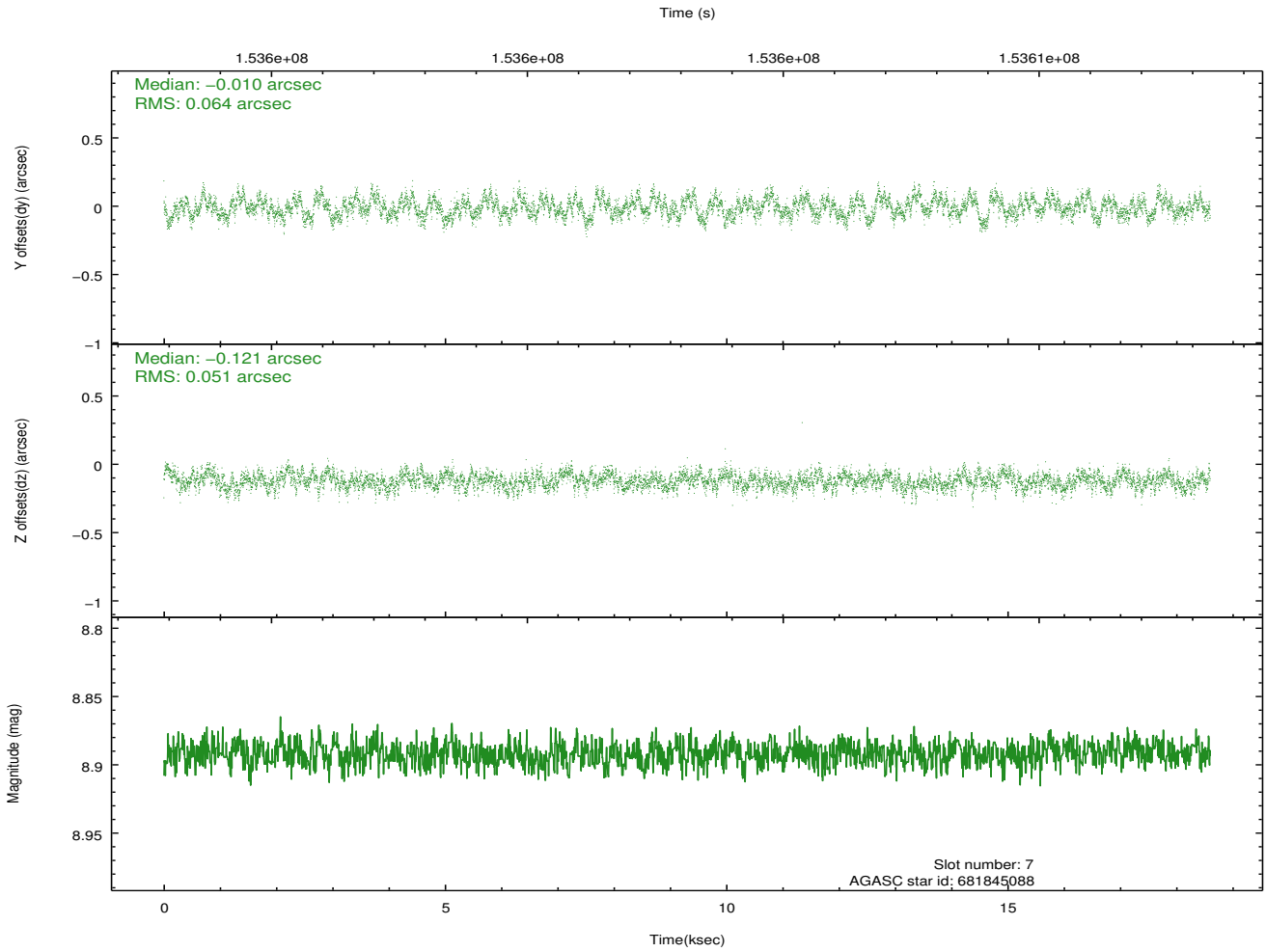
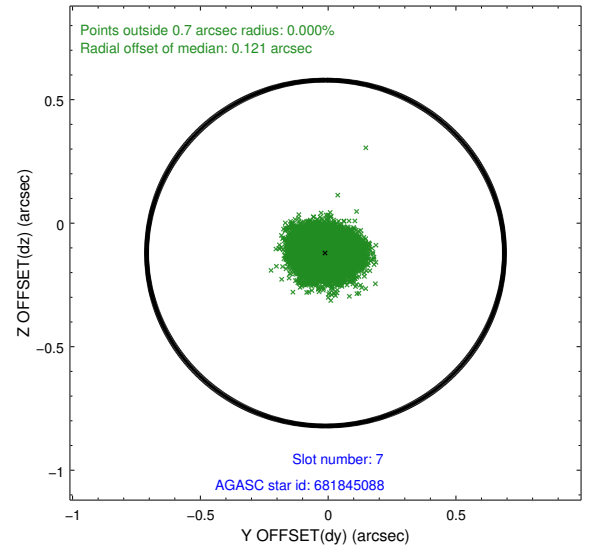
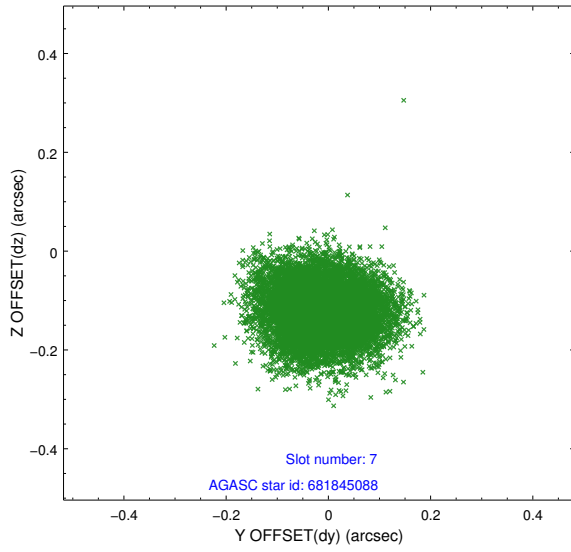
2.4.3 Slot 5



2.4.4 Slot 6

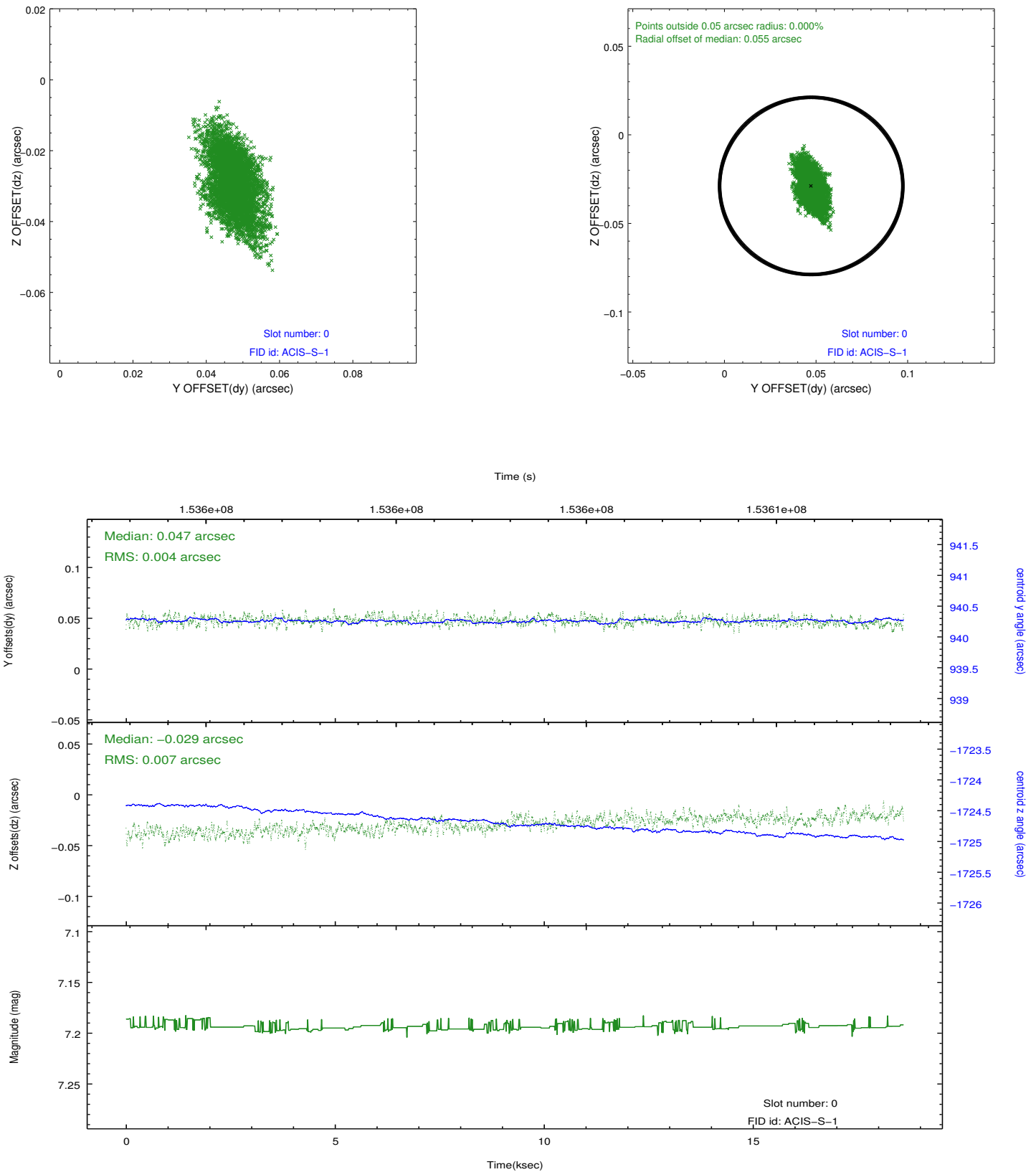


2.4.5 Slot 7

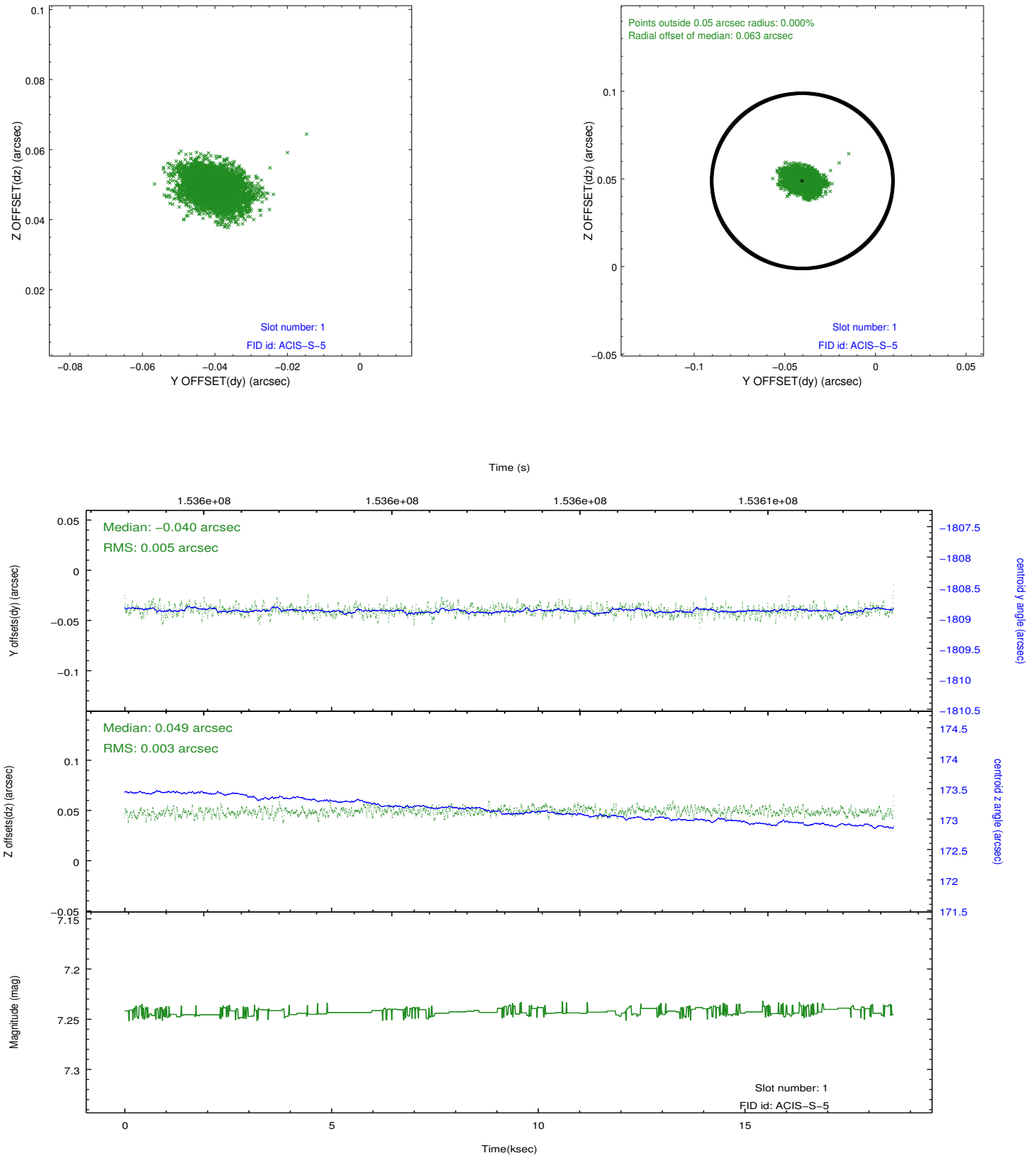


2.5 FID Slots

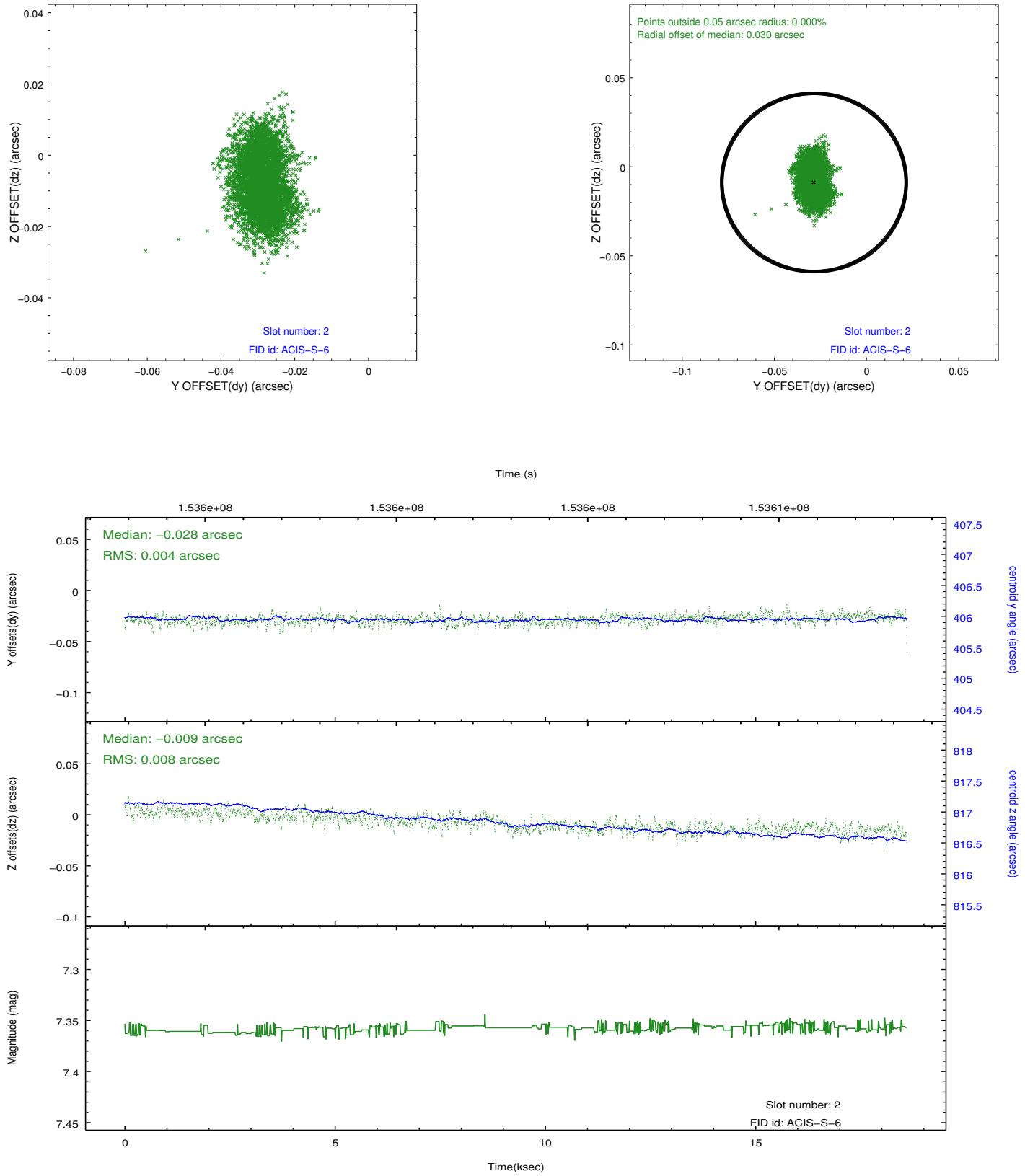
2.5.1 Slot 0



2.5.2 Slot 1



2.5.3 Slot 2



A Summary

A.1 Status

V&V Scientist	Jen Lauer
V&V Date (YYYY-MM-DD)	2012.10.26
V&V Edition	1
V&V Disposition and Status	OK
V&V Charge Time	17.932

A.2 Comments