

# V&V Reference Report

## L2 ASCDS Version : 7.6.9

Observation 2079 - L2 Version 001  
Chandra X-Ray Center

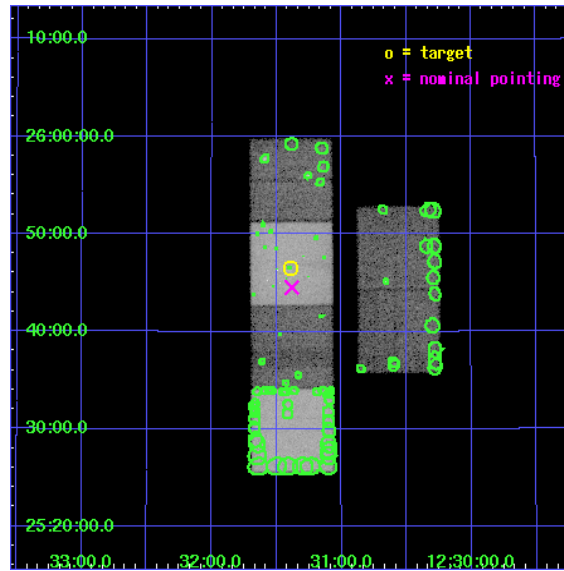
L2 Processing Date : Dec 19 2006

## Contents

<b>1</b>	<b>Front</b>	<b>2</b>
<b>2</b>	<b>OBI</b>	<b>3</b>
2.1	OBI . . . . .	3
2.1.1	Images . . . . .	3
2.1.2	Bias . . . . .	3
2.1.3	Parameters . . . . .	4
2.1.4	Events . . . . .	4
2.2	Compared Parameters . . . . .	5
2.3	Aspect . . . . .	6
2.4	Star Slots . . . . .	9
2.4.1	Slot 3 . . . . .	9
2.4.2	Slot 4 . . . . .	10
2.4.3	Slot 5 . . . . .	11
2.4.4	Slot 6 . . . . .	12
2.4.5	Slot 7 . . . . .	13
2.5	FID Slots . . . . .	14
2.5.1	Slot 0 . . . . .	14
2.5.2	Slot 1 . . . . .	15
2.5.3	Slot 2 . . . . .	16
<b>3</b>	<b>Point Sources</b>	<b>17</b>
<b>A</b>	<b>Summary</b>	<b>18</b>
A.1	Status . . . . .	18
A.2	Comments . . . . .	18

# 1 Front

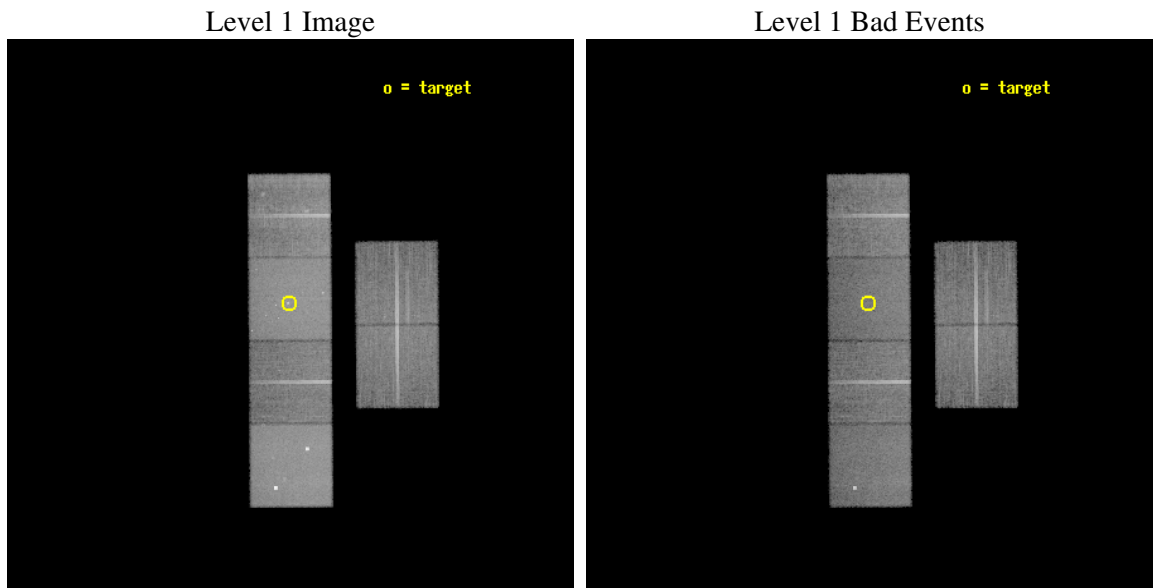
seq_num	600213
obs_id	2079
title	GALACTIC WINDS AND COOLING FLOWS IN ELLIPTICAL GALAXIES
observer	DR. Joel Bregman
object	NGC 4494
dtcycle	0
cycle	P
ra_targ	187.847917
dec_targ	25.775556
ra_nom	187.84566998634
dec_nom	25.74231636138
roll_nom	269.58424436651
revision	2
ontime	25155.200023428
livetime	24836.669734088
ontime2	25155.200023428
ontime3	25151.959073171
ontime5	25155.200023428
ontime6	25148.718102917
ontime7	25155.200023428
ontime8	25155.200023428
l2events	331291



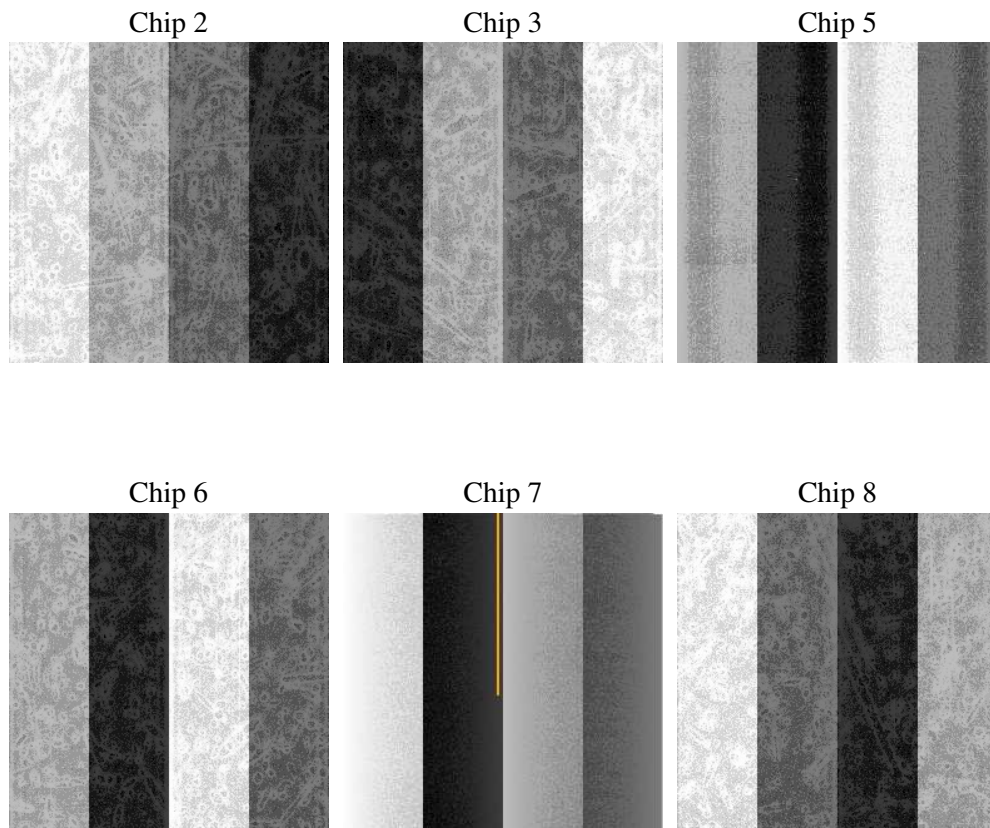
## 2 OBI

### 2.1 OBI

#### 2.1.1 Images



#### 2.1.2 Bias



### 2.1.3 Parameters

obi_num	0
ascdsver	7.6.9
caldsver	3.2.4
date	2006-12-19T10:31:24
revision	2

sched_exp_time	25000.000000
ontime	25166.344940662
ontime2	25166.344940662
ontime3	25163.103990406
ontime5	25166.344940662
ontime6	25159.863020152
ontime7	25166.344940662
ontime8	25166.344910756
l1events	1247940

### 2.1.4 Events

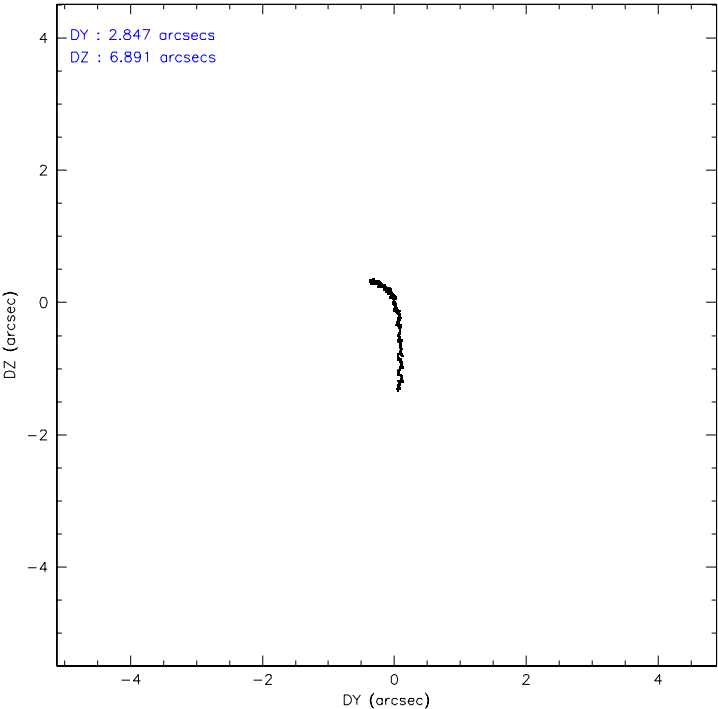
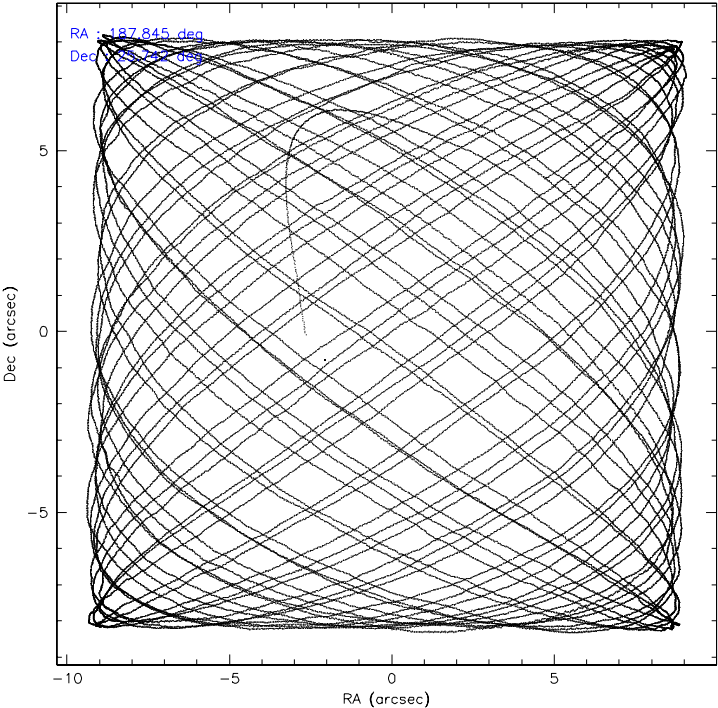
	ccd 2	ccd 3	ccd 5	ccd 6	ccd 7	ccd 8
level 1 events	170774	162437	275723	171239	253848	213919
rejected events	149517	141554	135535	147117	132772	166255
rejected %	87%	87%	49%	85%	52%	77%

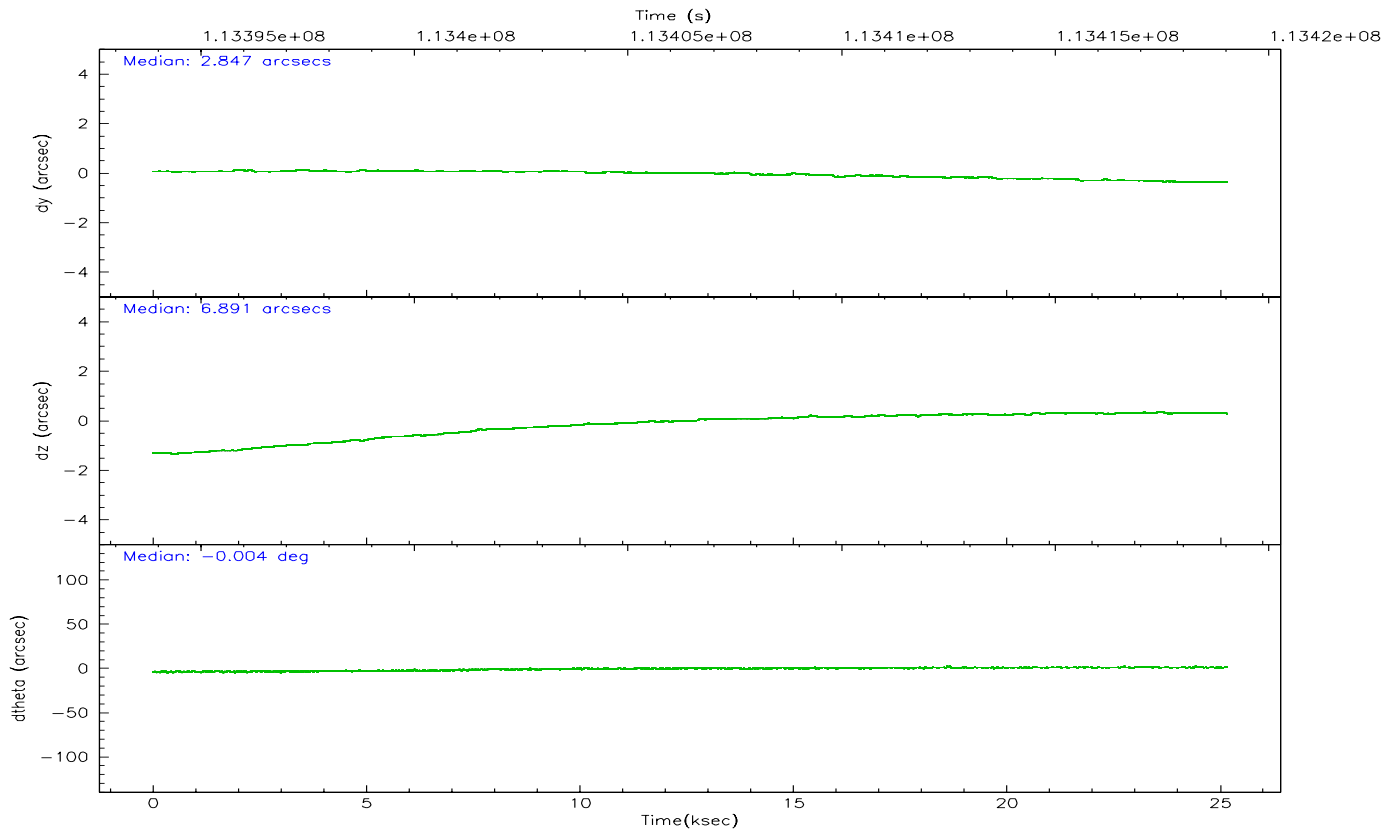
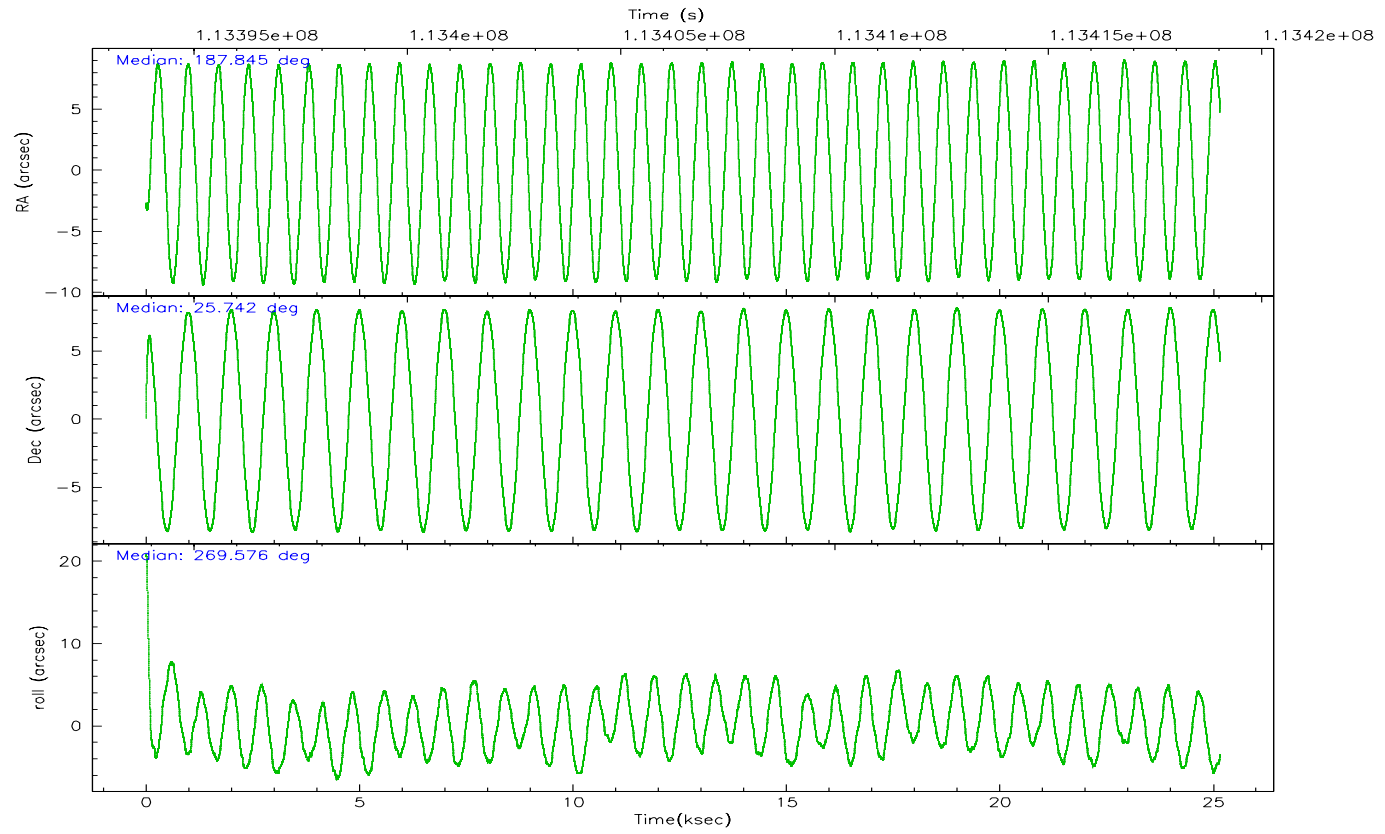
	ccd 2	ccd 3	ccd 5	ccd 6	ccd 7	ccd 8
grade 0 events	9767	9630	16619	11905	10356	18134
	5%	5%	6%	6%	4%	8%
grade 1 events	84	101	2388	91	127	122
	0%	0%	0%	0%	0%	0%
grade 2 events	4498	4166	42251	4549	27634	10038
	2%	2%	15%	2%	10%	4%
grade 3 events	1806	1853	3936	1921	6850	4591
	1%	1%	1%	1%	2%	2%
grade 4 events	1795	1838	3796	1898	6698	4273
	1%	1%	1%	1%	2%	1%
grade 5 events	5602	6091	11878	7104	14403	8720
	3%	3%	4%	4%	5%	4%
grade 6 events	3395	3402	73606	3855	69590	10659
	1%	2%	26%	2%	27%	4%
grade 7 events	143827	135356	121249	139916	118190	157382
	84%	83%	43%	81%	46%	73%

## 2.2 Compared Parameters

Parameter	Planned	Actual	Parameter	Planned	Actual
Instrument	ACIS	ACIS	Obspar format version number	6	6
Detector	ACIS-235678	ACIS-235678	Obspar file type	PREDICTED	ACTUAL
Grating	NONE	NONE	Obspar update status	NONE	UPDATED
Data mode	FAINT	FAINT	Number of optional ACIS chips dropped	0	0
Observation mode	POINTING	POINTING	On-chip summing requested	N	N
Pointing RA	187.830409	187.8456699863376	Subarray requested	NONE	NONE
Pointing Dec	25.765872	25.74231636138035	Alternating exposures requested	N	N
Pointing Roll	269.434245	269.5842443665078	Primary exposure time	0.000000	3.2
SIM focus pos (mm)	-0.684267	-0.6828225247311905			
SIM defocus (mm)	0	0.001444936568705701			
SIM translation stage pos (mm)	-190.132523	-190.1400660498719			
SIM translation stage offset (mm)	0	0.00754346686406393			
Observation start time	113394031.184000	113392812.76408			
Observation start date	2001-08-05T10:19:27	2001-08-05T10:00:12			
Observation end time	113419031.184000	113419989.61515			
Observation end date	2001-08-05T17:16:07	2001-08-05T17:33:09			
Read mode	TIMED	TIMED			

2.3 Aspect



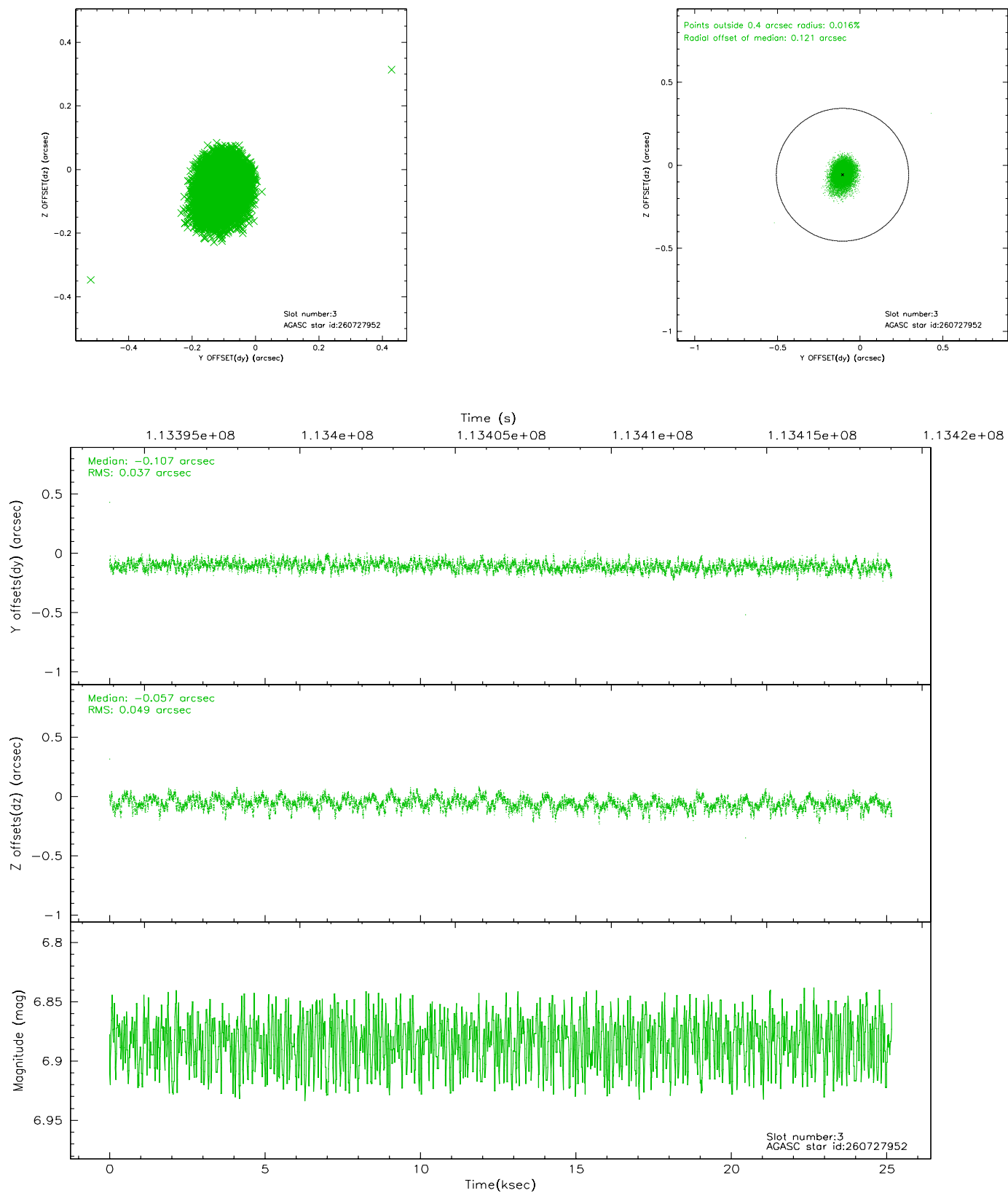


### Slot Statistics

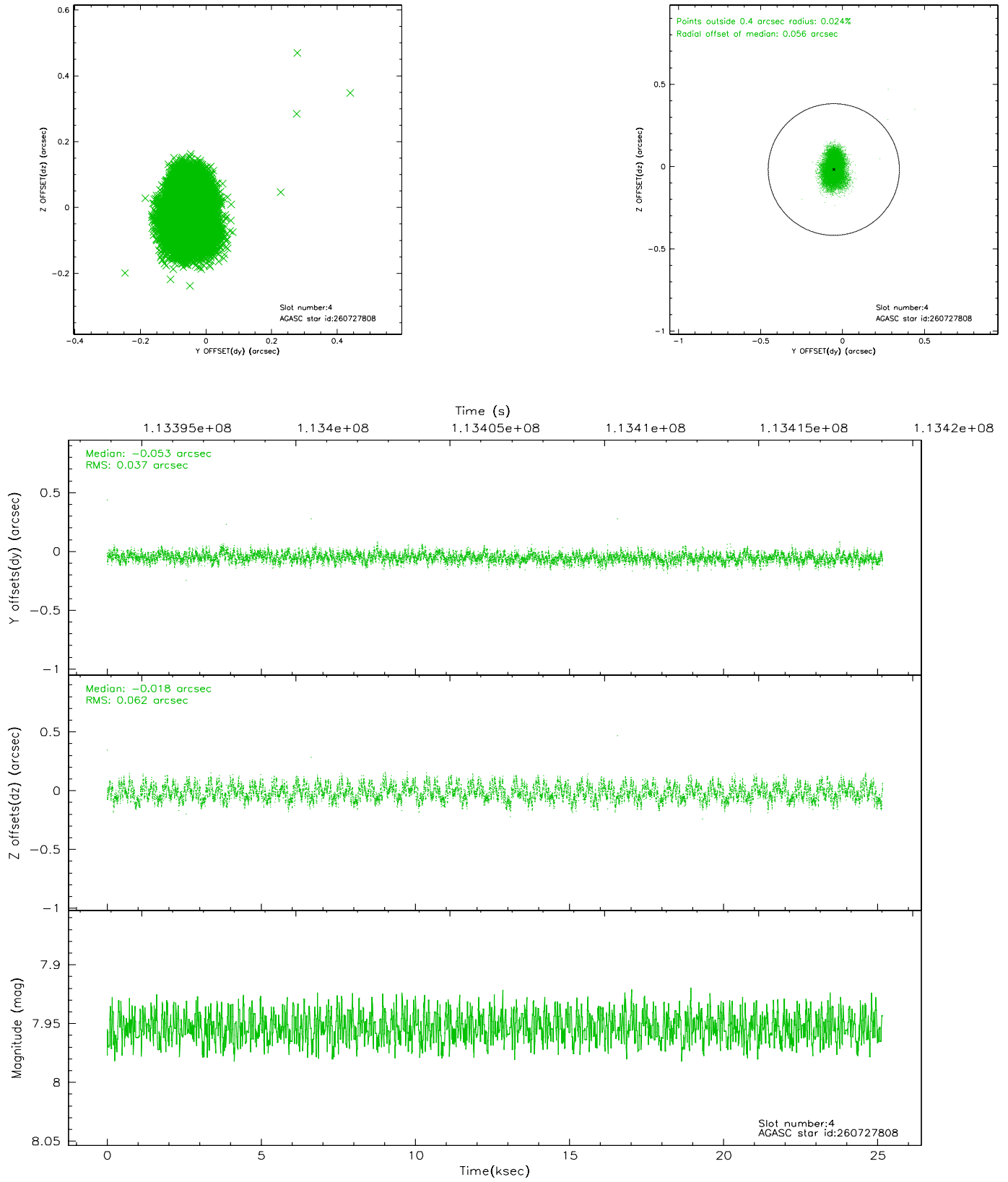
slot	status	id	mag	n_pts	med_dy	med_dz	dr1	dr2	ra	dec	mean_y	mean_z
0	FID	ACIS-S-2	7.11	6137	-0.004	0.029	0.015	0.020	0.000000	0.000000	-755.42	-1727.83
1	FID	ACIS-S-4	7.20	6136	-0.088	-0.005	0.010	0.021	0.000000	0.000000	2157.70	180.53
2	FID	ACIS-S-5	7.24	6135	0.062	-0.012	0.013	0.018	0.000000	0.000000	-1808.06	174.28
3	GUIDE	260727952	6.88	12275	-0.107	-0.057	0.065	0.105	187.158984	26.226958	-1643.91	-2184.00
4	GUIDE	260727808	7.95	12274	-0.053	-0.018	0.077	0.122	187.491479	26.120798	-1268.41	-1107.51
5	GUIDE	260718872	9.83	12259	0.232	-0.103	0.172	0.263	187.446779	25.247480	1876.87	-1229.64
6	GUIDE	260717160	9.26	12270	0.044	0.107	0.083	0.134	188.060460	25.970238	-743.63	738.01
7	GUIDE	261097208	8.51	12269	-0.121	0.058	0.102	0.159	188.588563	26.289040	-1915.17	2429.29

## 2.4 Star Slots

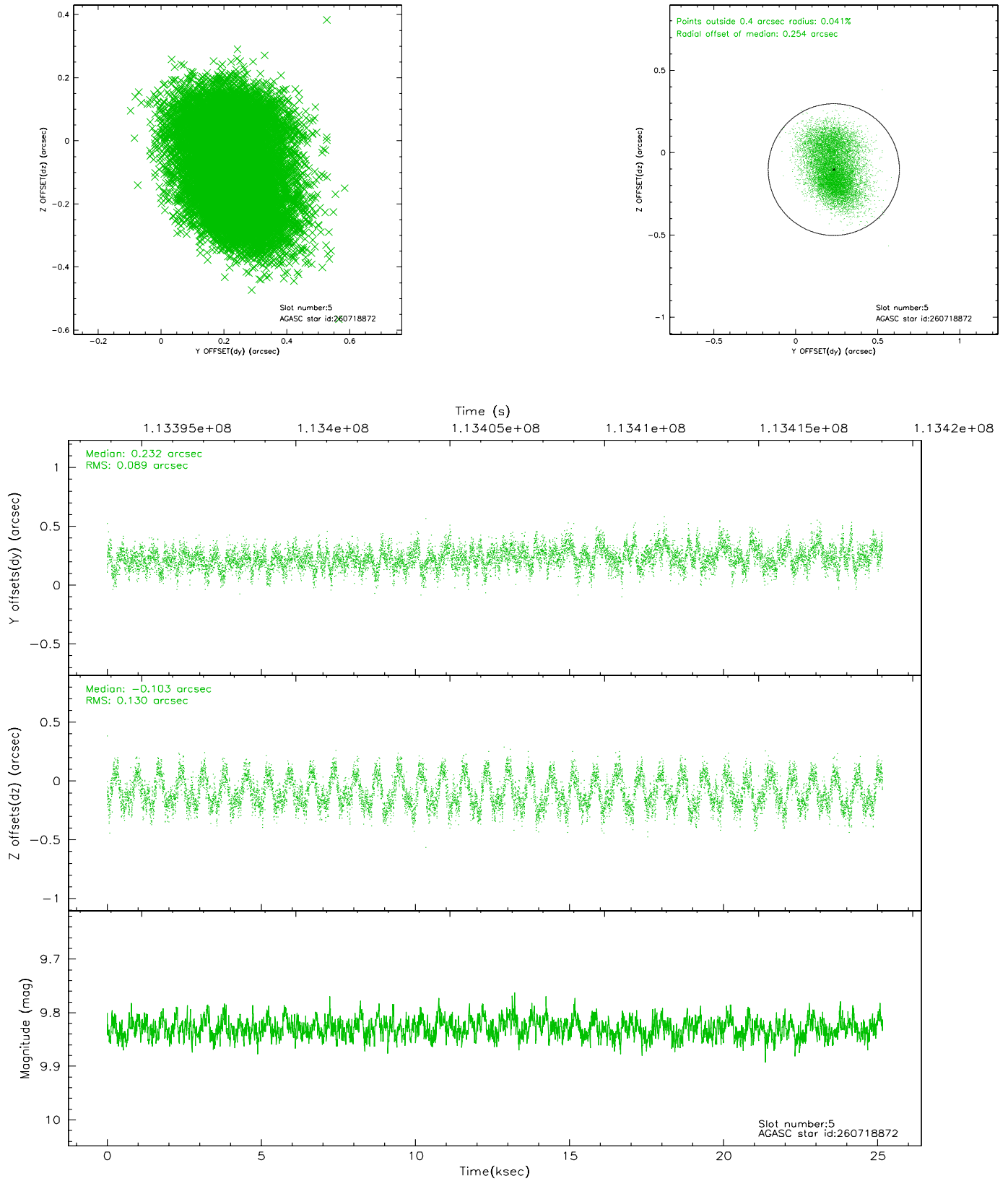
### 2.4.1 Slot 3



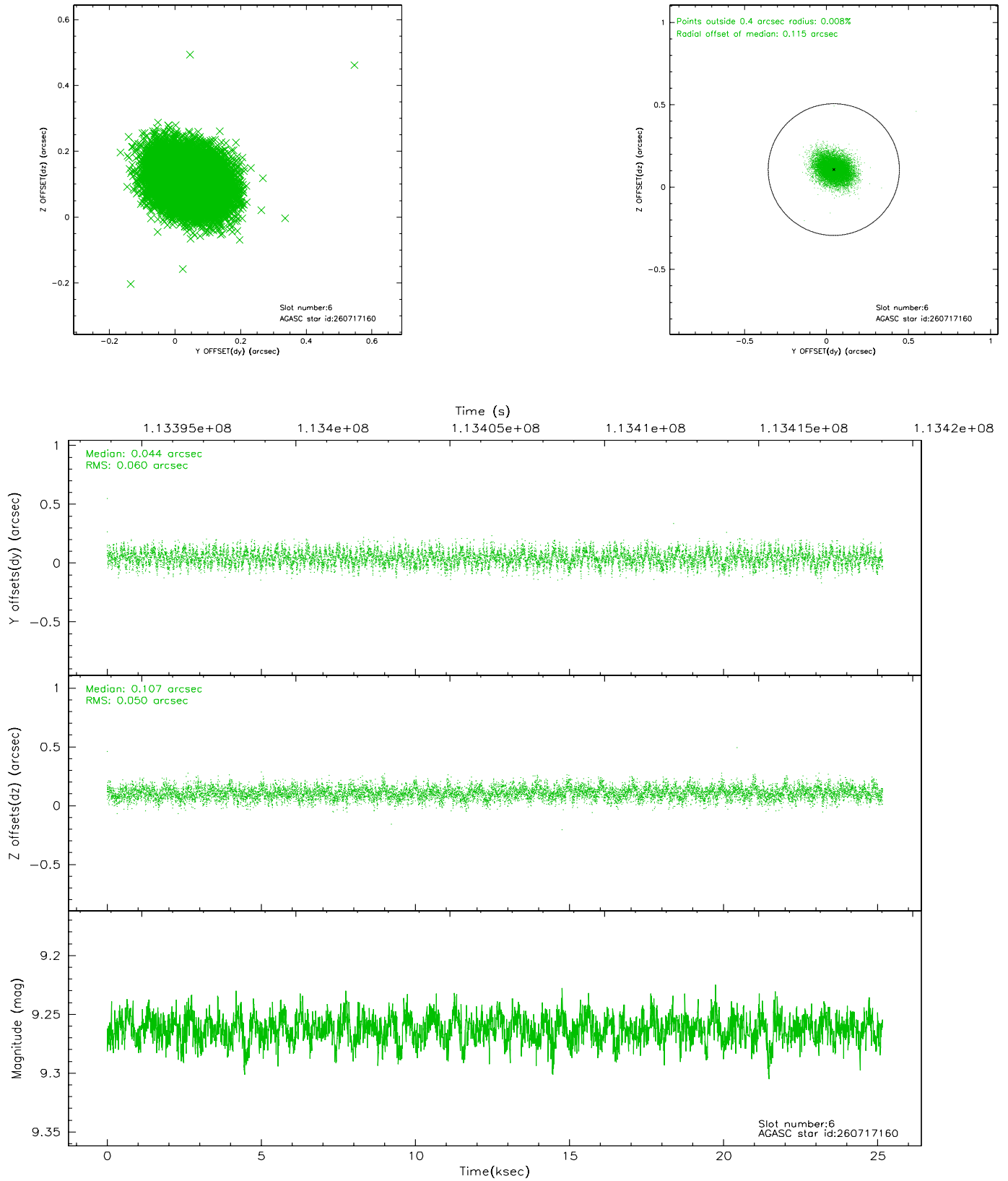
## 2.4.2 Slot 4



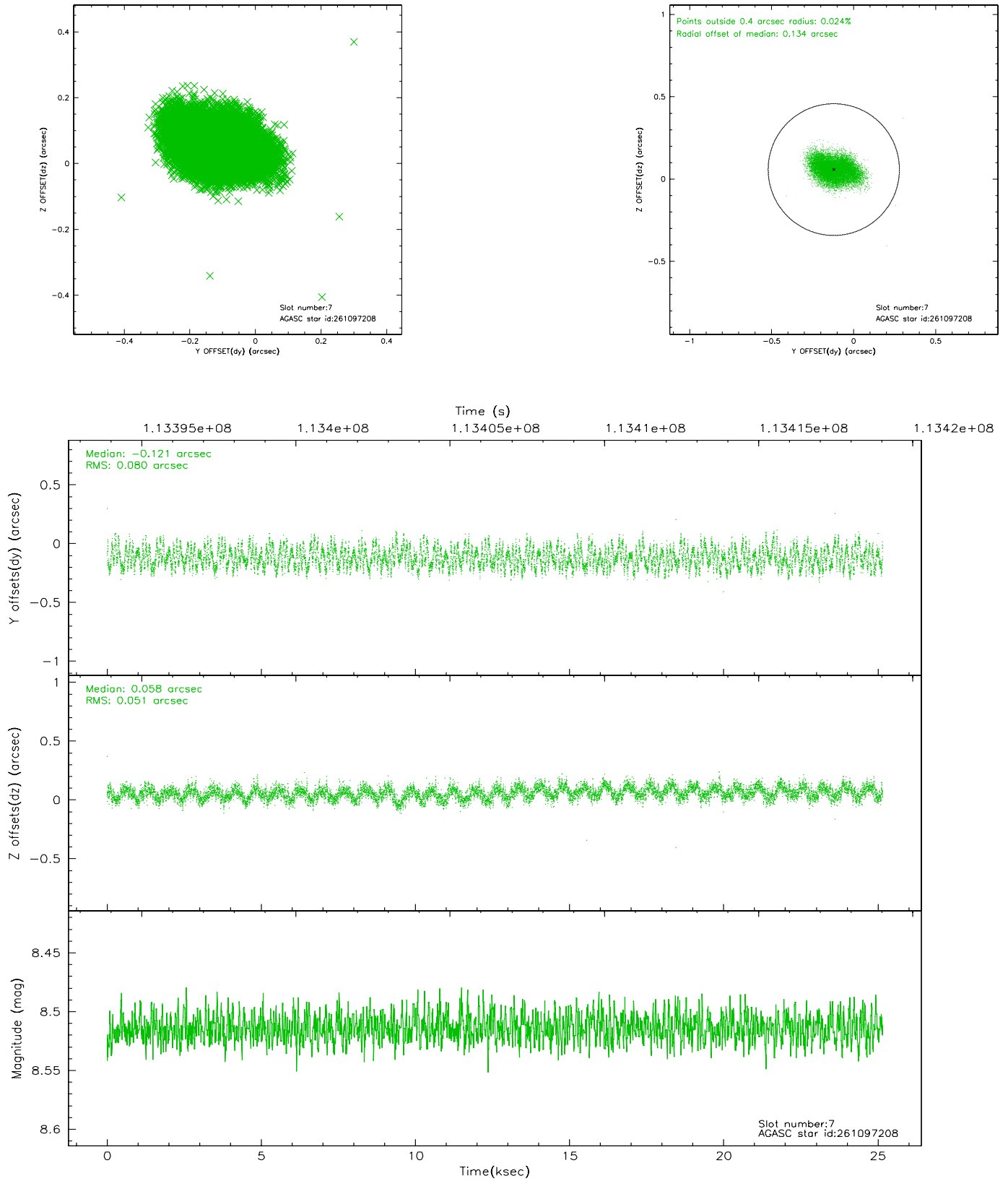
### 2.4.3 Slot 5



## 2.4.4 Slot 6

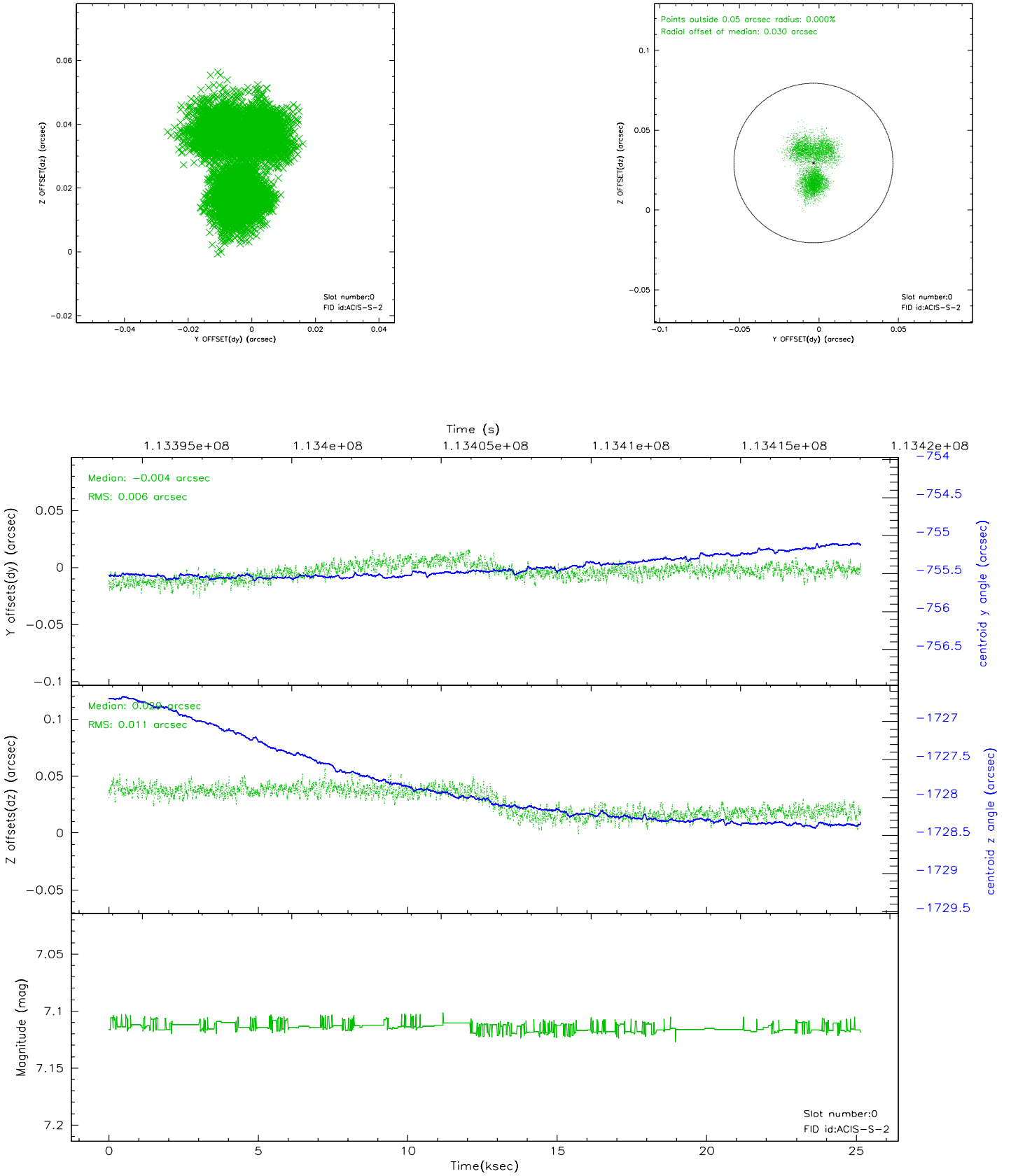


## 2.4.5 Slot 7

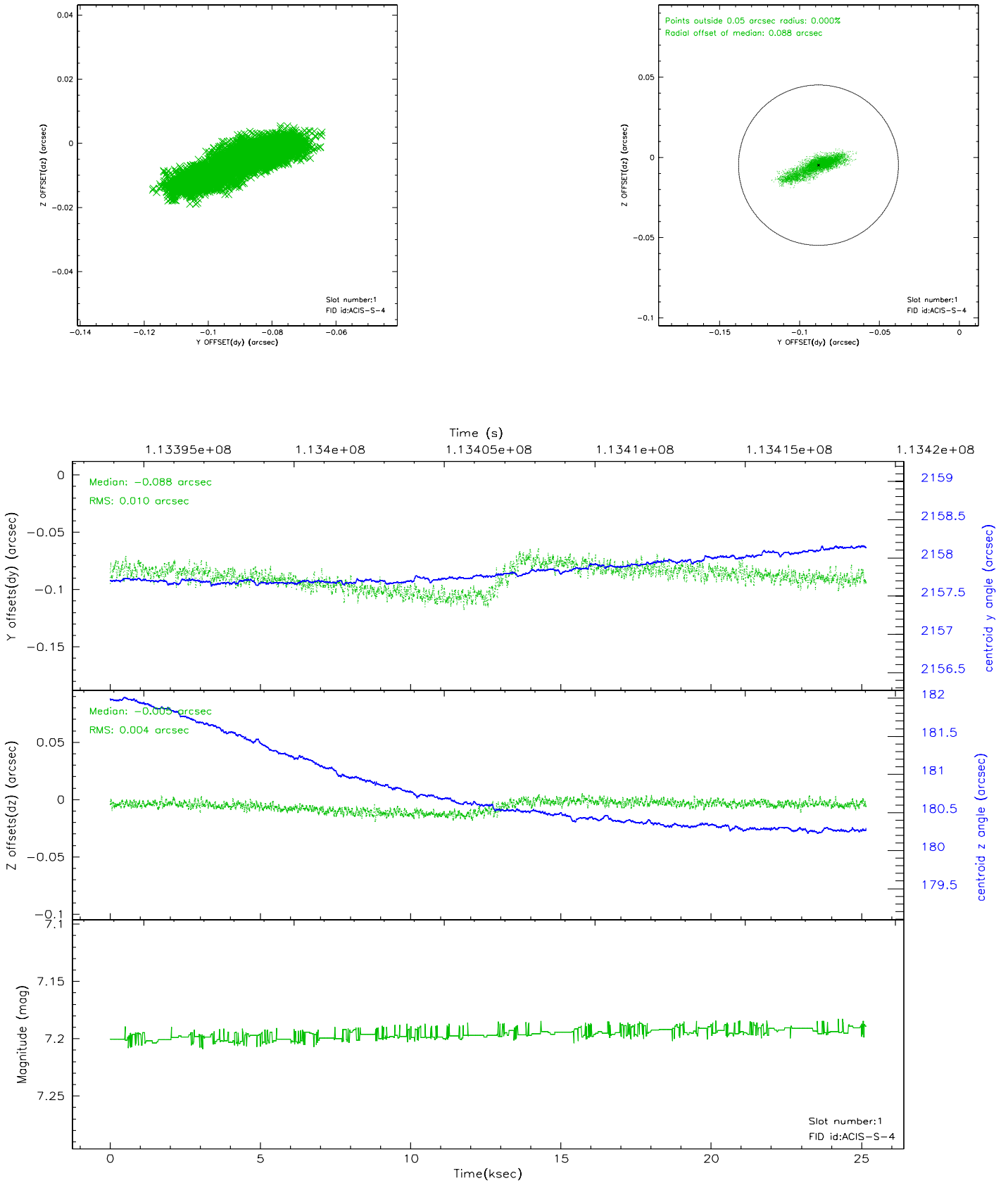


## 2.5 FID Slots

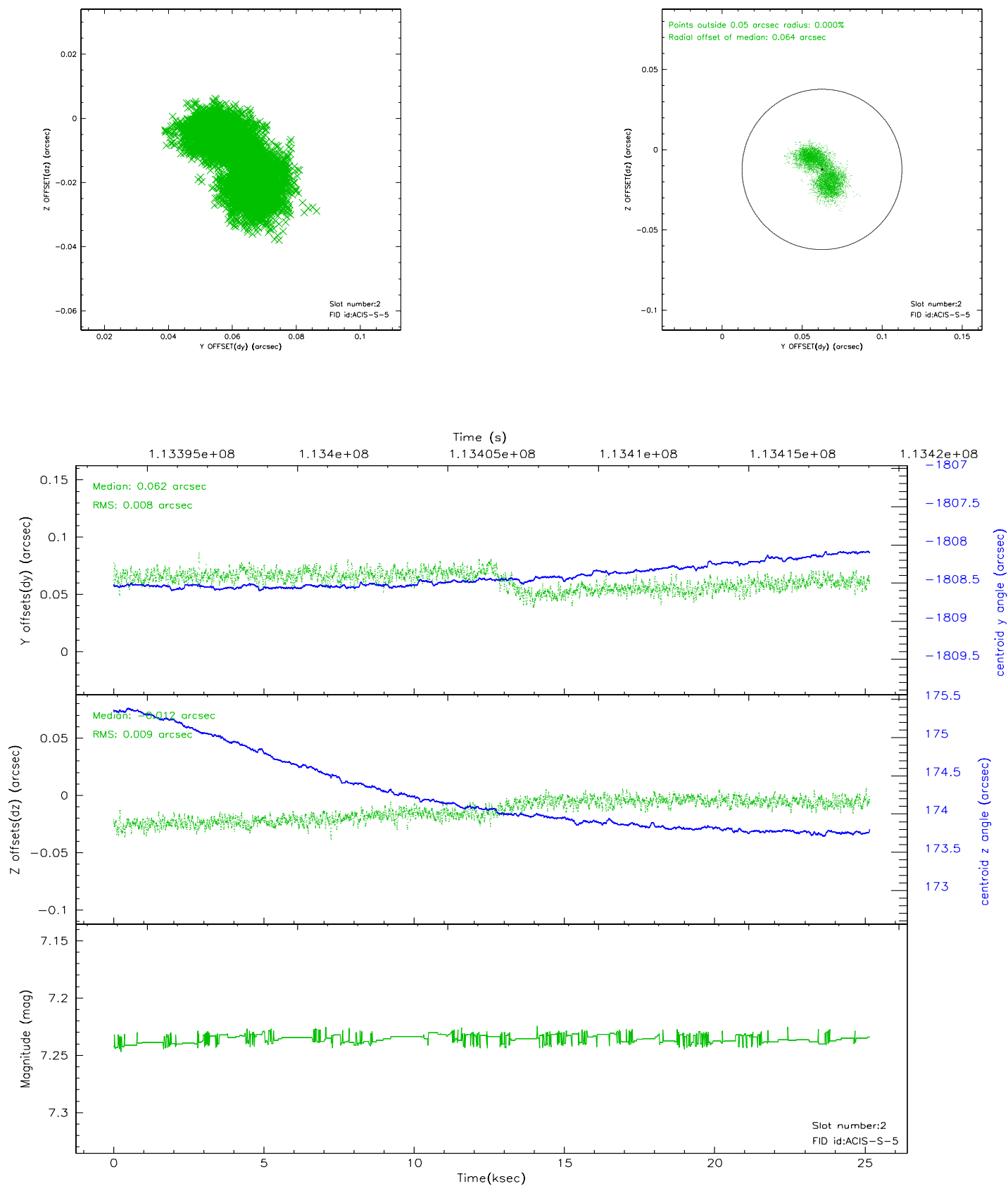
### 2.5.1 Slot 0



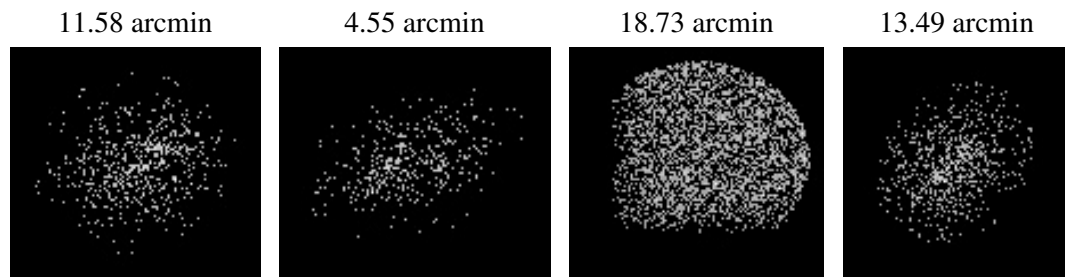
## 2.5.2 Slot 1



### 2.5.3 Slot 2



### 3 Point Sources



## A Summary

### A.1 Status

V&V Scientist	Jen Lauer
V&V Date (YYYY-MM-DD)	2006.12.19
V&V Edition	1
V&V Disposition and Status	OK
V&V Charge Time	25.155

### A.2 Comments