

V&V Reference Report

L2 ASCDS Version : 10.4.2.1

Observation 18709 - L2 Version 2
Chandra X-Ray Center

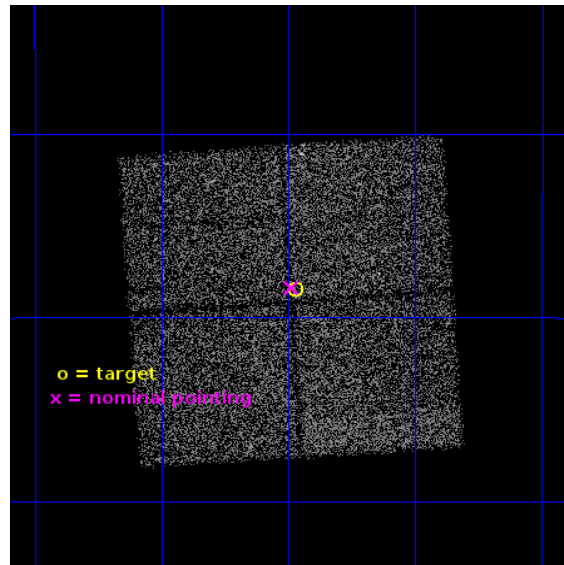
L2 Processing Date : Nov 24 2015

Contents

1	Front	2
2	OBI	3
2.1	OBI	3
2.1.1	Images	3
2.1.2	Bias	3
2.1.3	Parameters	4
2.1.4	Events	4
2.2	Compared Parameters	5
2.3	Aspect	6
2.4	Star Slots	9
2.4.1	Slot 3	9
2.4.2	Slot 4	10
2.4.3	Slot 5	11
2.4.4	Slot 6	12
2.5	FID Slots	13
2.5.1	Slot 0	13
2.5.2	Slot 1	14
2.5.3	Slot 2	15
A	Summary	16
A.1	Status	16
A.2	Comments	16

1 Front

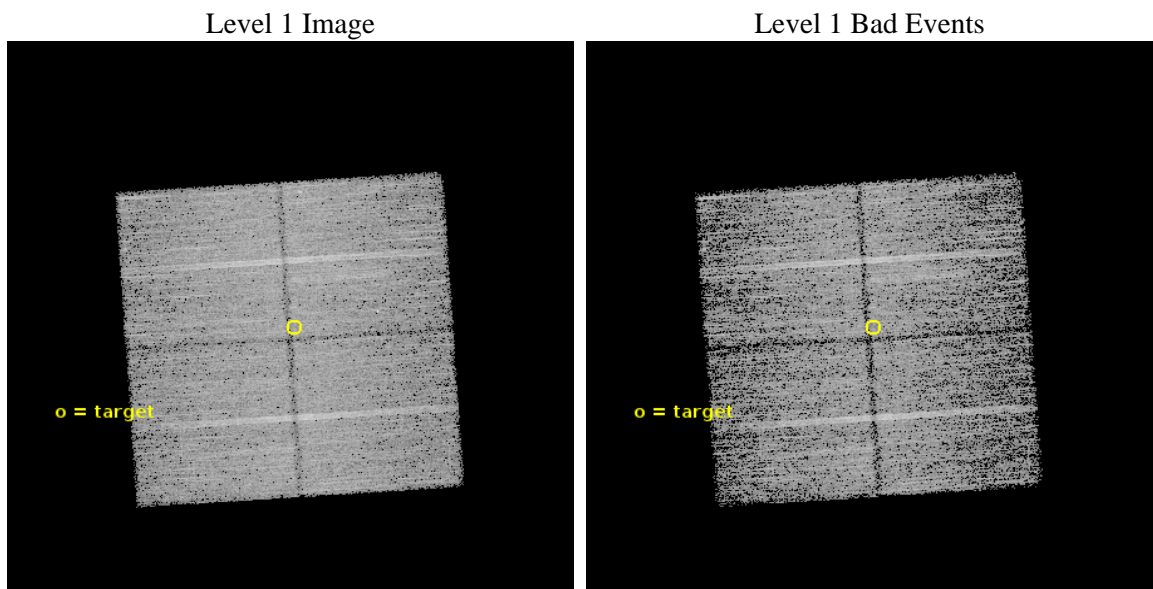
seq_num	901115	Sequence number
obs_id	18709	Observation id
title	The Chandra Deep Field-South: A Peerless Ultradeep Survey for Exploring the Distant X-ray Universe	Proposal title
observer	Prof. William Brandt	Principal investigator
object	Chandra Deep Field-South	Source name
dtcycle	0	
cycle	P	events from which exps? Prim/Second/Both
ra_targ	53.117083	Observer's specified target RA [deg]
dec_targ	-27.807333	Observer's specified target Dec [deg]
ra_nom	53.121965888466	Nominal RA [deg]
dec_nom	-27.806217523295	Nominal Dec [deg]
roll_nom	356.21096333801	Nominal Roll [deg]
revision	2	Processing version of data
ontime	17084.100131512	Sum of GTIs [s]
livetime	16860.883786162	Livetime [s]
ontime0	17084.100131512	Sum of GTIs [s]
ontime1	17084.100131512	Sum of GTIs [s]
ontime2	17084.100131512	Sum of GTIs [s]
ontime3	17084.100131512	Sum of GTIs [s]
l2events	36125	Number of level 2 events



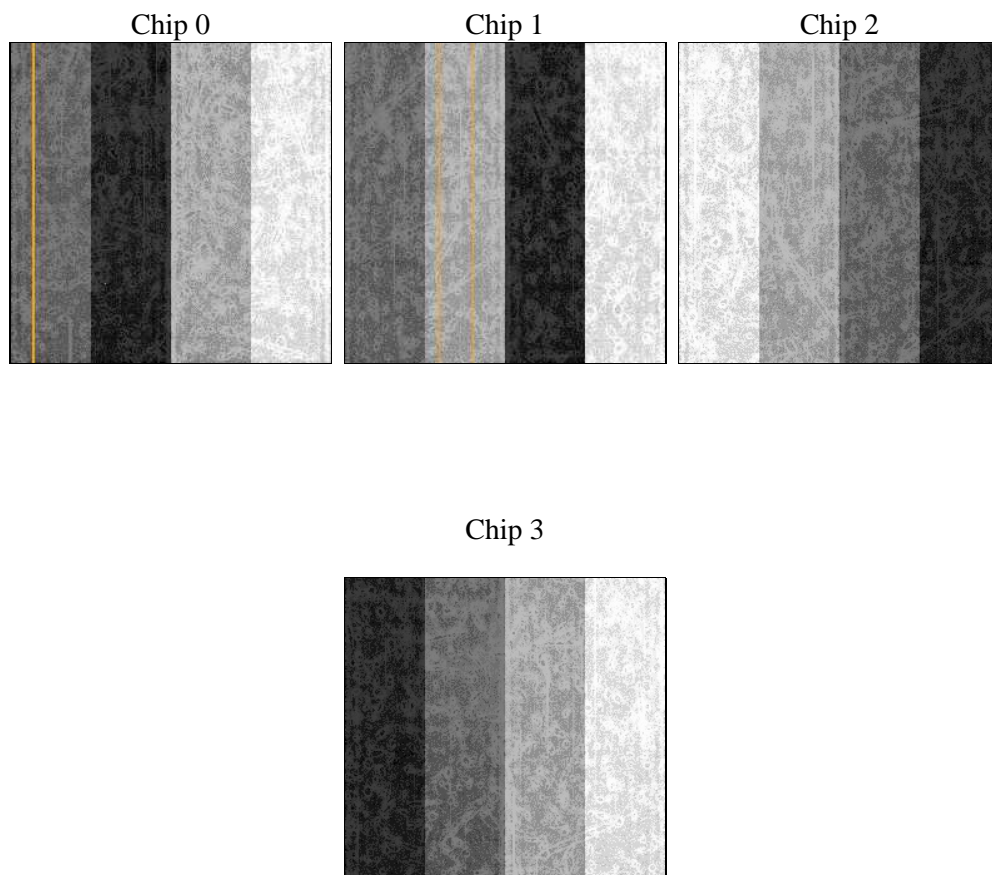
2 OBI

2.1 OBI

2.1.1 Images



2.1.2 Bias



2.1.3 Parameters

obi_num	1	Obi number	sched_exp_time	17000.000000	[s] Scheduled observation exposure time
ascdsver	10.4.2.1	Processing system revision	ontime	17084.100131512	Sum of GTIs [s]
caldbver	4.6.10a	 	ontime0	17084.100131512	Sum of GTIs [s]
date	2015-11-24T22:34:12	Date and time of file creation	ontime1	17084.100131512	Sum of GTIs [s]
revision	2	Processing version of data	ontime2	17084.100131512	Sum of GTIs [s]
			ontime3	17084.100131512	Sum of GTIs [s]
			l1events	372354	Number of level 1 events

2.1.4 Events

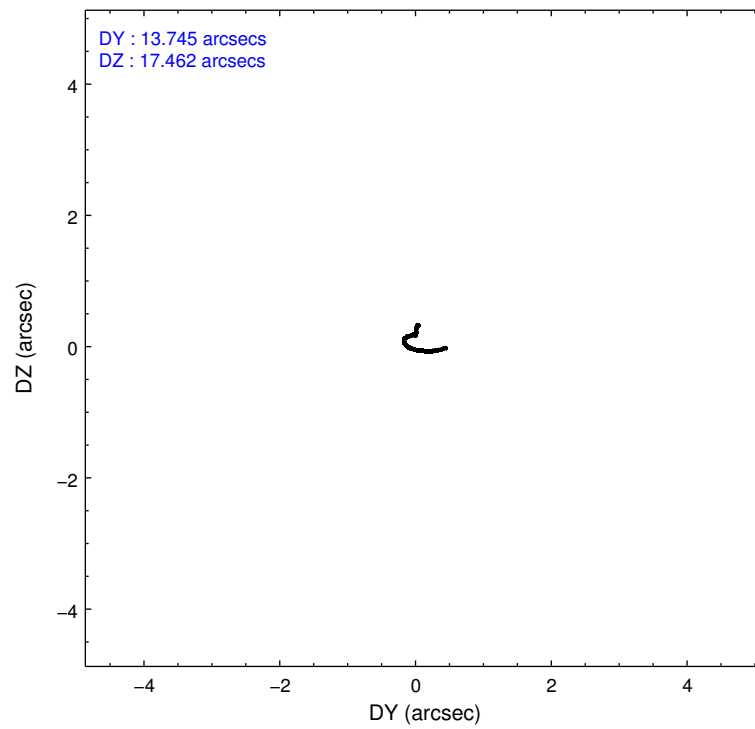
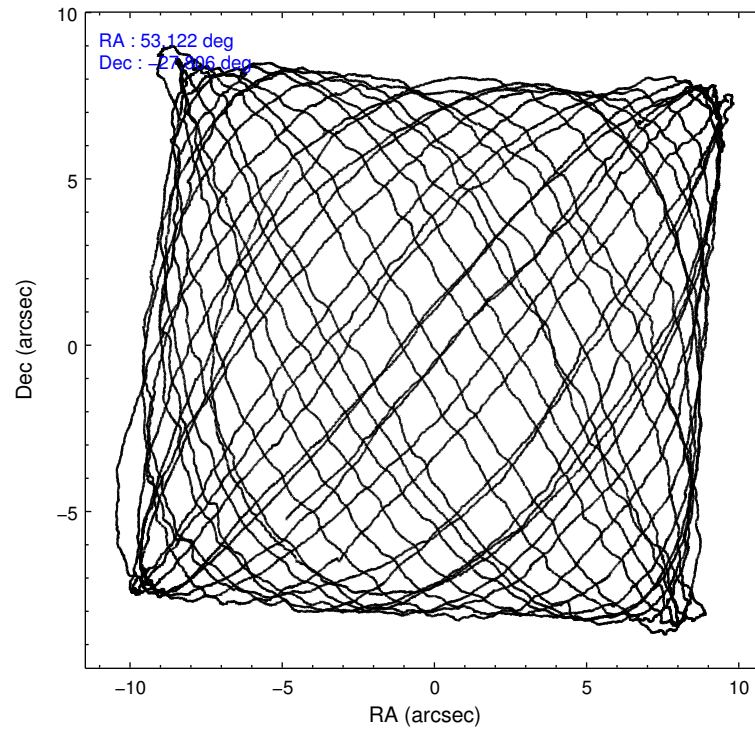
	ccd 0	ccd 1	ccd 2	ccd 3
level 1 events	90692	88774	96974	95914
rejected events	80104	77049	86541	85653
rejected %	88%	86%	89%	89%

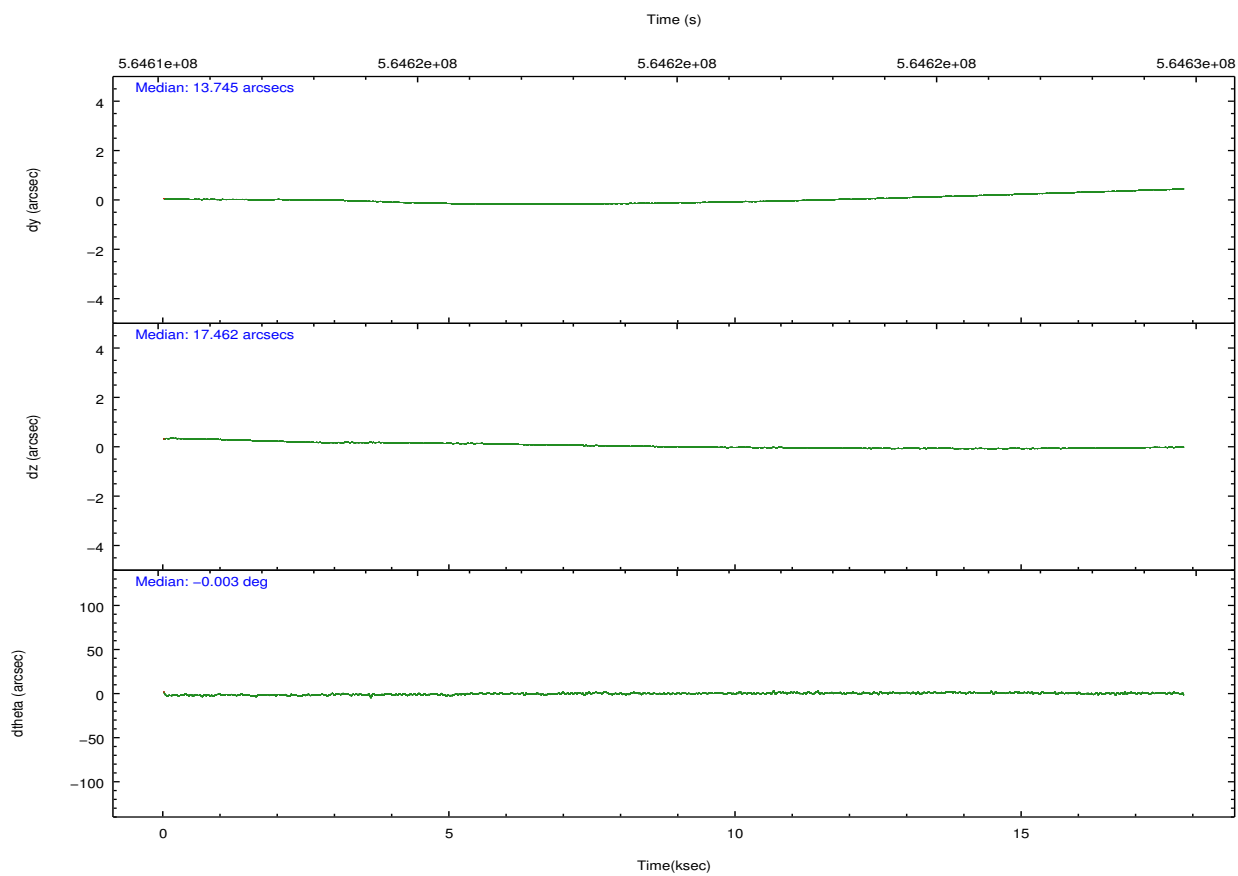
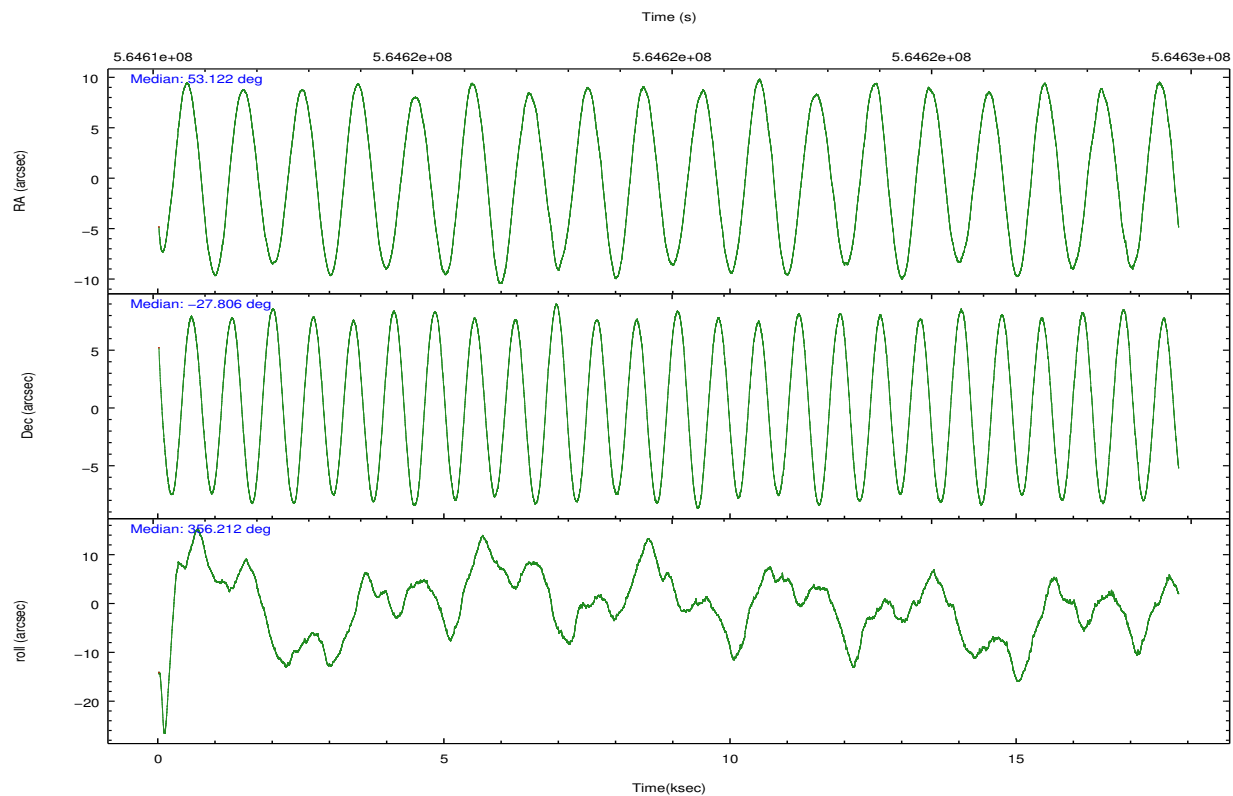
	ccd 0	ccd 1	ccd 2	ccd 3
grade 0 events	3600	3758	3644	3745
	3%	4%	3%	3%
grade 1 events	44	41	39	51
	0%	0%	0%	0%
grade 2 events	2606	3011	2520	2152
	2%	3%	2%	2%
grade 3 events	1123	1112	1051	1118
	1%	1%	1%	1%
grade 4 events	997	1151	1092	1054
	1%	1%	1%	1%
grade 5 events	4284	4407	4042	4835
	4%	4%	4%	5%
grade 6 events	2263	2693	2132	2196
	2%	3%	2%	2%
grade 7 events	75775	72601	82454	80763
	83%	81%	85%	84%

2.2 Compared Parameters

Parameter	Planned	Actual	Parameter	Planned	Actual
Instrument	ACIS	ACIS	Obspar format version number	7	7
Detector	ACIS-0123	ACIS-0123	Obspar file type	PREDICTED	ACTUAL
Grating	NONE	NONE	Obspar update status	NONE	UPDATED
Data mode	VFAINT	VFAINT	Number of optional ACIS chips dropped	0	0
Observation mode	POINTING	POINTING	On-chip summing requested	N	N
[deg] Pointing RA	53.093997	53.12196588846585	Subarray requested	NONE	NONE
[deg] Pointing Dec	-27.818498	-27.80621752329525	Alternating exposures requested	N	N
[deg] Pointing Roll	355.989225	356.2109633380131	[s] Primary exposure time	0.000000	3.1
[mm] SIM focus pos	-0.782348	-0.7809083437167272			
[mm] SIM defocus	0	0.001439871863259334			
[mm] SIM translation stage pos	-233.592463	-233.5874344608287			
[mm] SIM translation stage offset	0	-0.005018542100998502			
[s] Observation start time (MET)	564611849.184000	564610533.03557			
Observation start date	2015-11-22T20:36:21	2015-11-22T20:15:33			
[s] Observation end time (MET)	564628849.184000	564629393.03664			
Observation end date	2015-11-23T01:19:41	2015-11-23T01:29:53			
Read mode	TIMED	TIMED			

2.3 Aspect



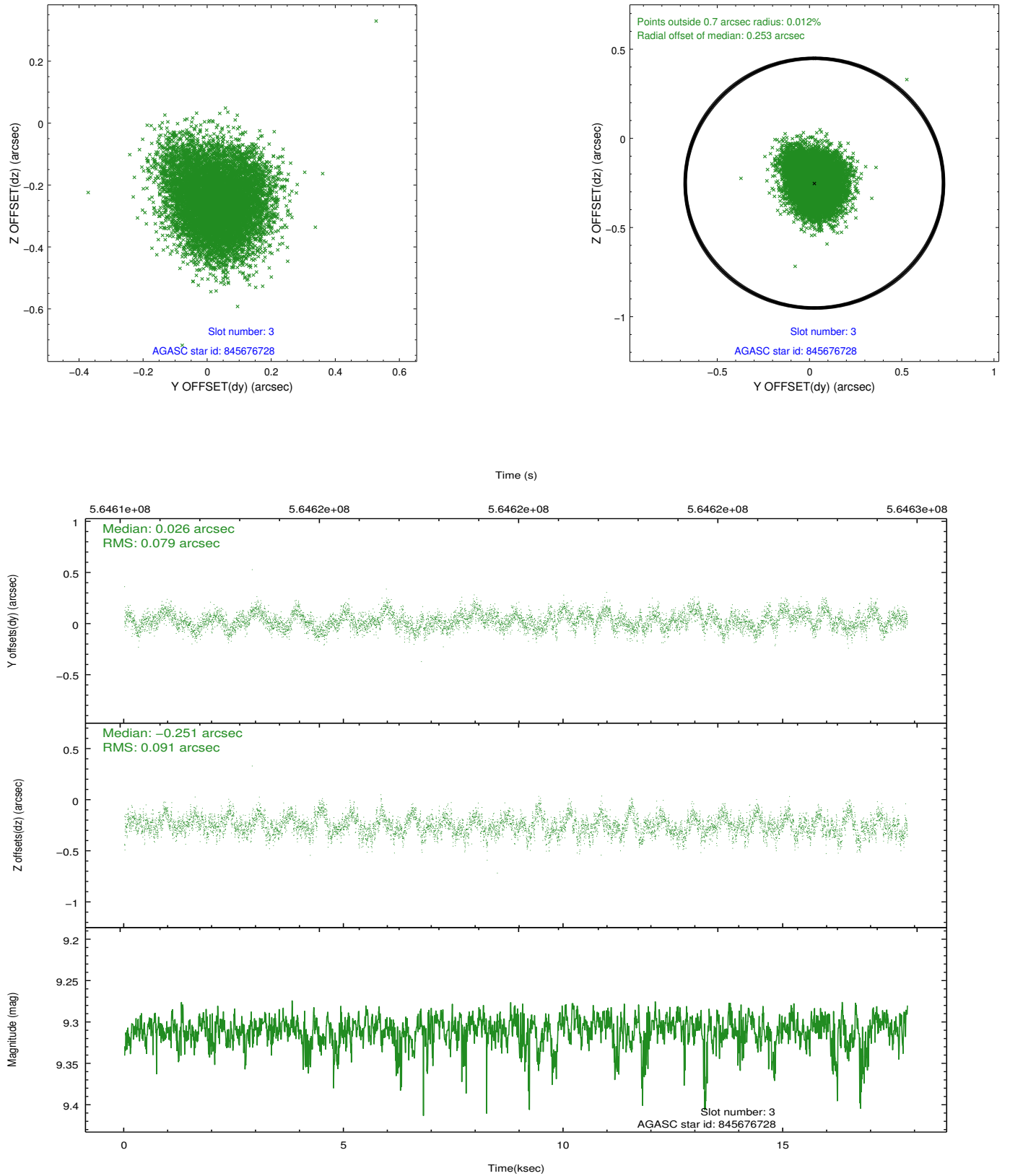


Slot Statistics

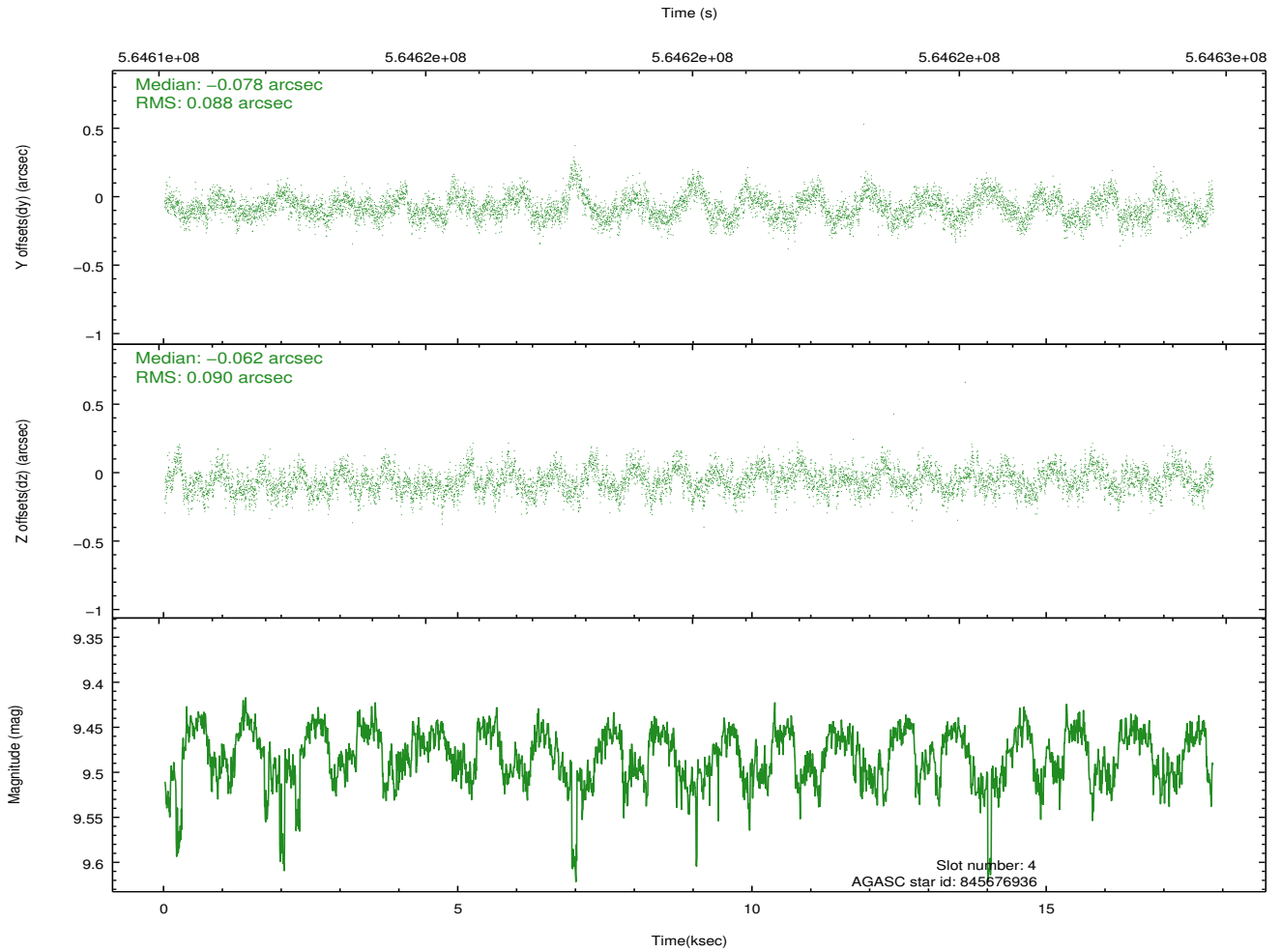
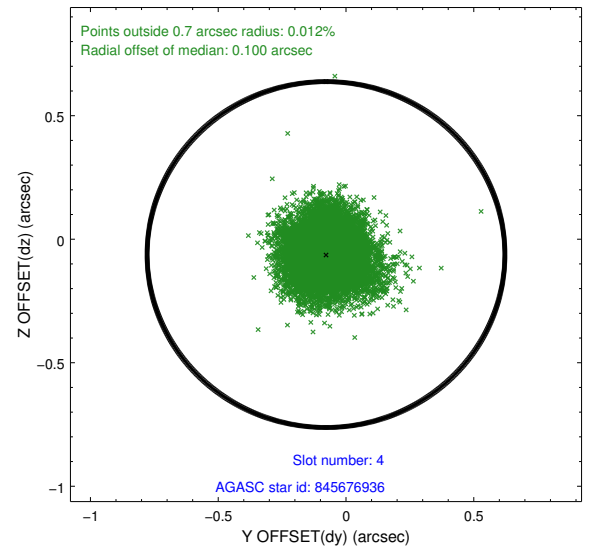
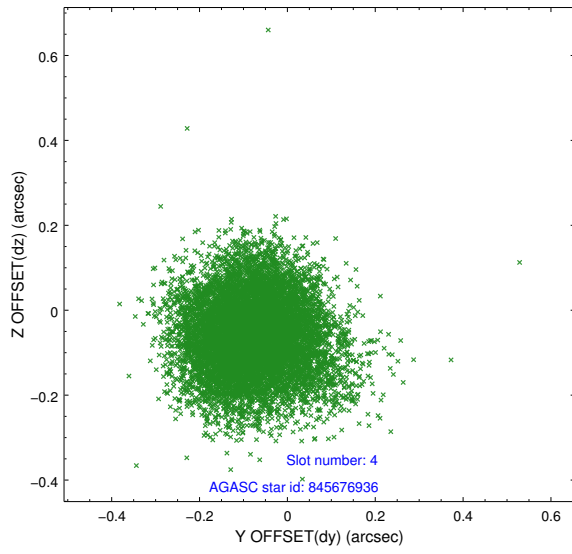
slot	status	used	id	mag	n_pts	med_dy	med_dz	dr1	dr2	ra	dec	mean_y	mean_z
0	FID		ACIS-I-2	7.15	4343	-0.216	-0.082	0.016	0.027	0.000000	0.000000	-768.65	-847.63
1	FID		ACIS-I-4	7.17	4346	0.424	0.138	0.009	0.017	0.000000	0.000000	2145.91	1058.67
2	FID		ACIS-I-5	7.26	4347	-0.309	0.013	0.012	0.019	0.000000	0.000000	-1822.30	1056.61
3	GUIDE	used	845676728	9.31	8682	0.026	-0.251	0.130	0.206	52.877179	-27.664318	-728.04	504.59
4	GUIDE	used	845676936	9.48	8684	-0.078	-0.062	0.135	0.213	52.843773	-27.880153	-777.96	-277.57
5	GUIDE	used	845683408	9.18	8686	0.188	0.305	0.137	0.214	52.484531	-28.338862	-1794.56	-2008.53
6	GUIDE	used	845807880	8.76	8689	-0.161	0.017	0.207	0.327	53.382027	-27.886093	931.34	-179.86
7	OMITTED			0.00	0	0.000	0.000	0.000	0.000	0.000000	0.000000	0.00	0.00

2.4 Star Slots

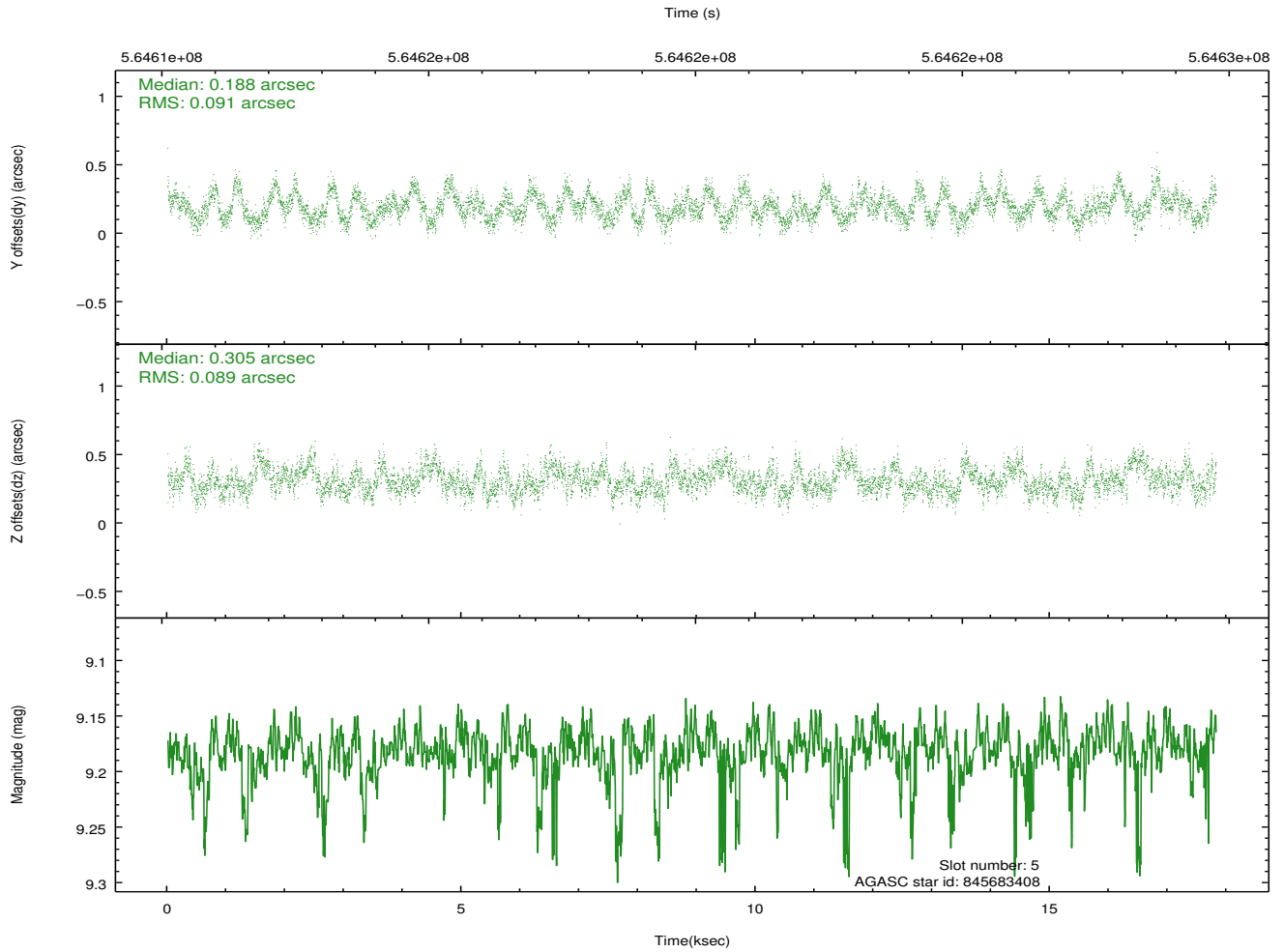
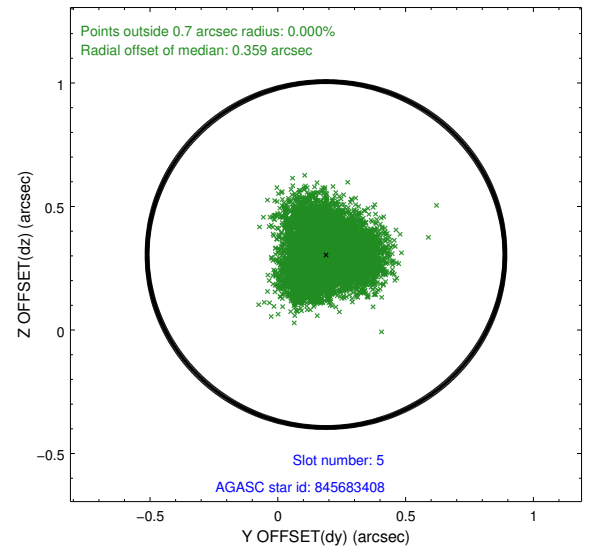
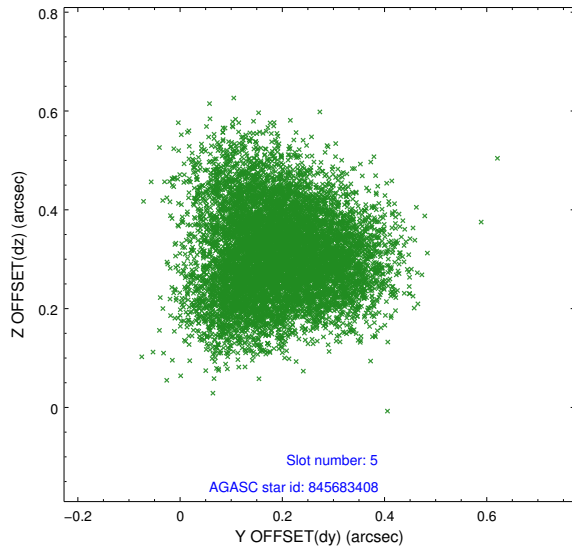
2.4.1 Slot 3



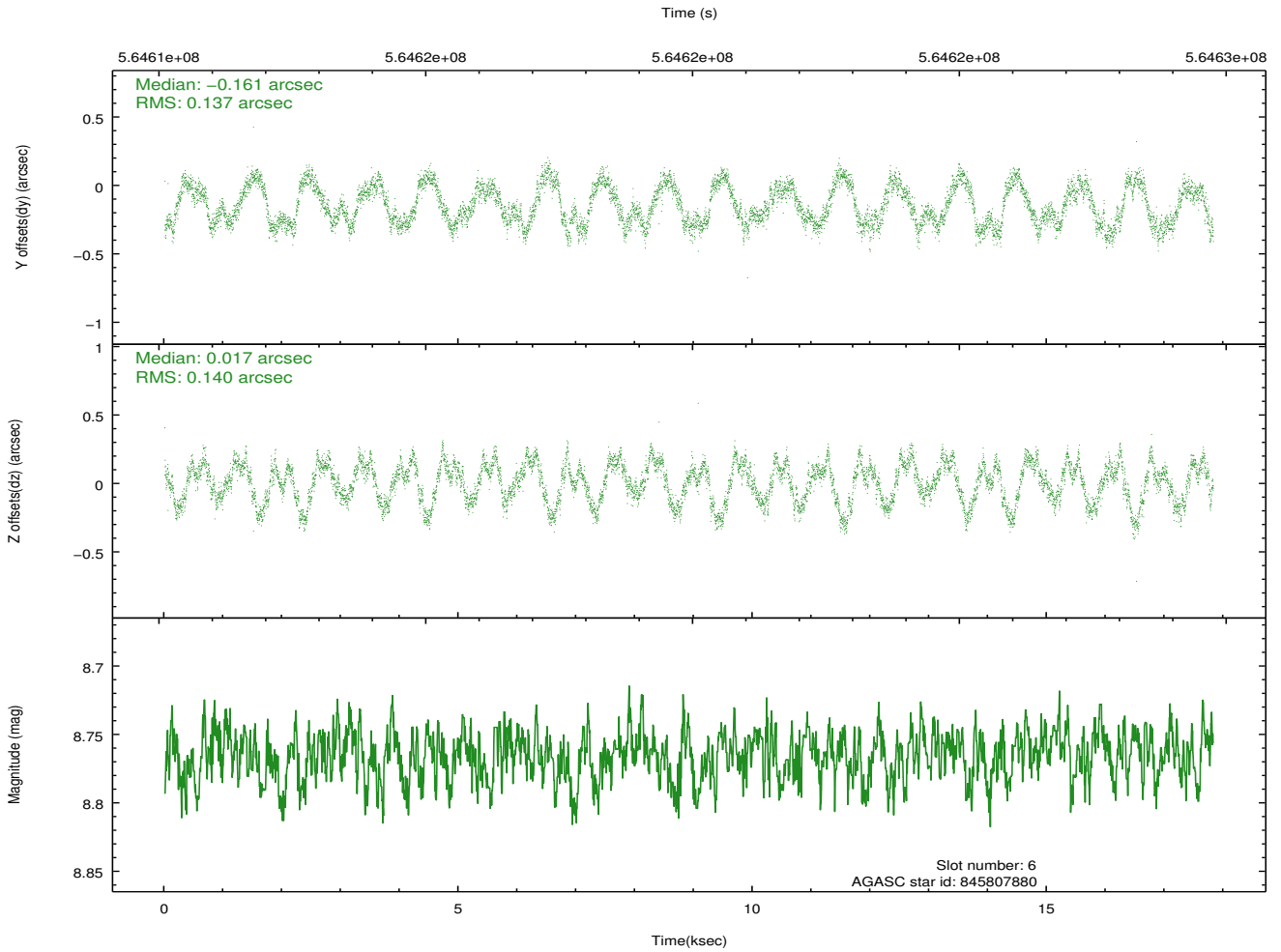
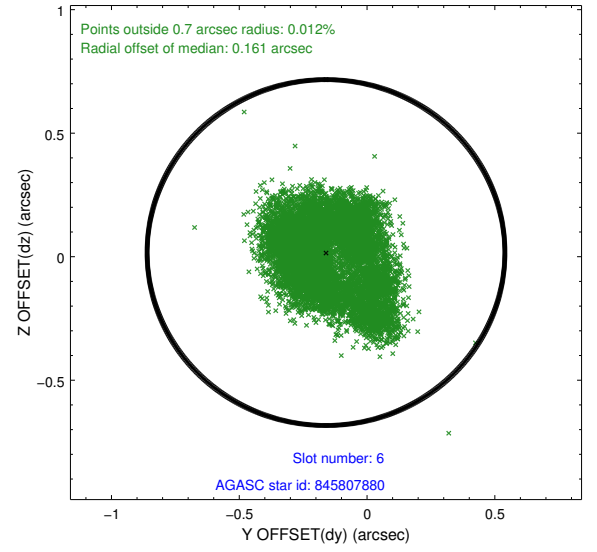
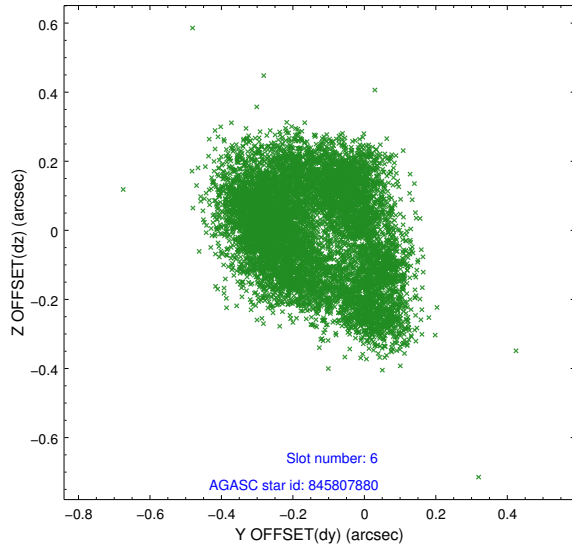
2.4.2 Slot 4



2.4.3 Slot 5

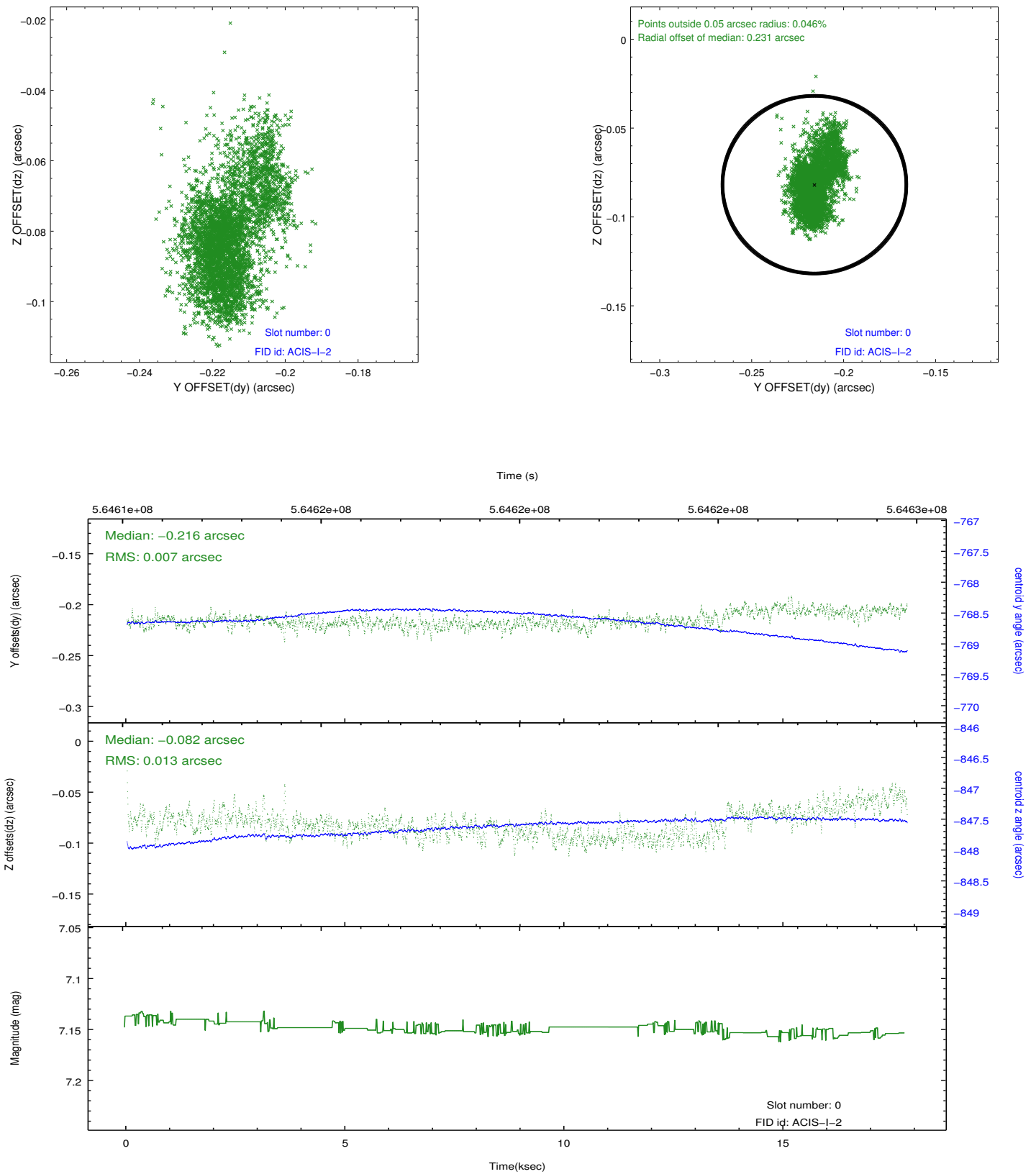


2.4.4 Slot 6

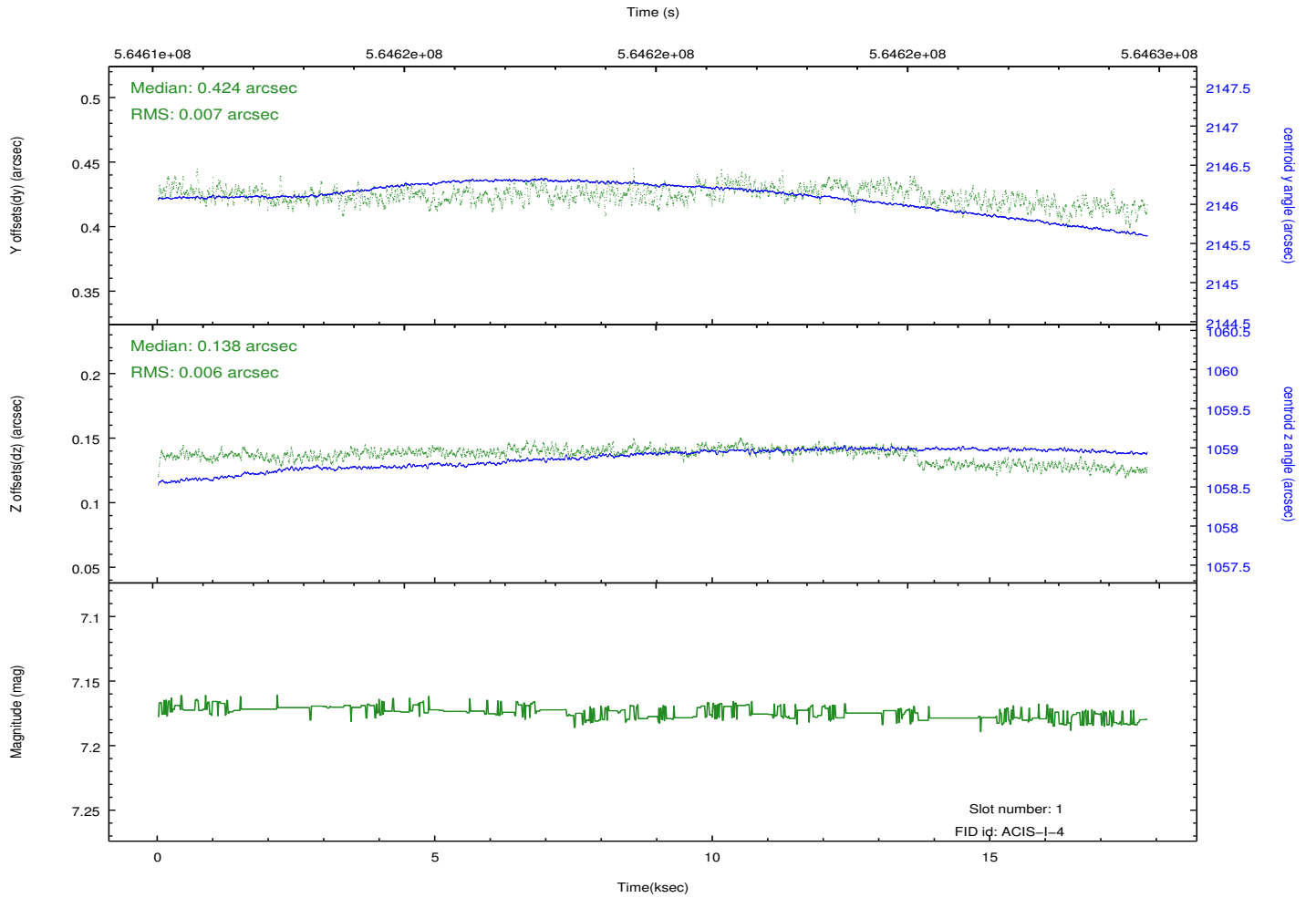
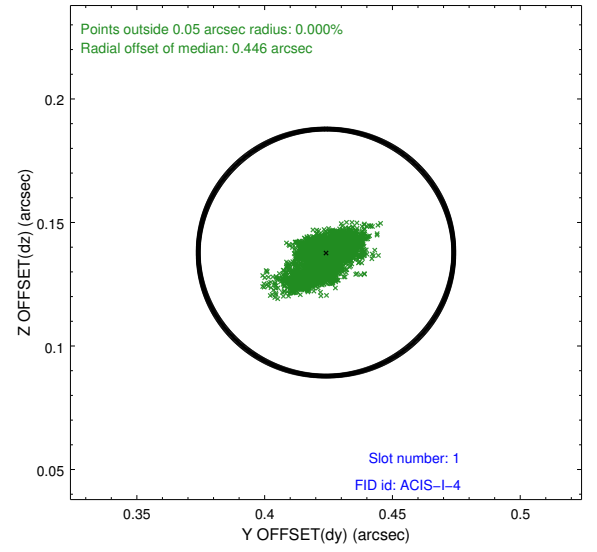
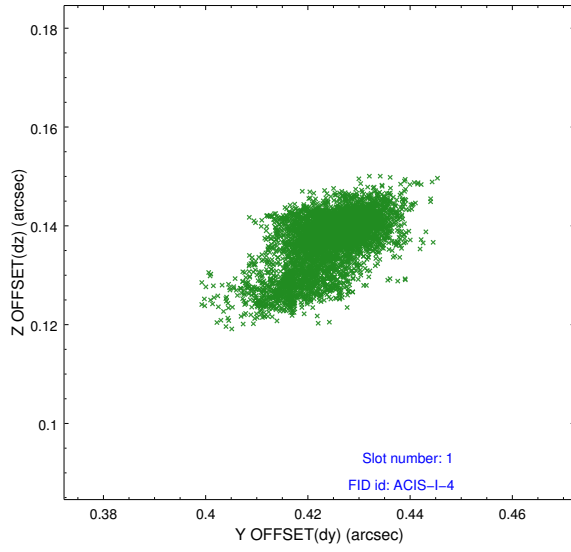


2.5 FID Slots

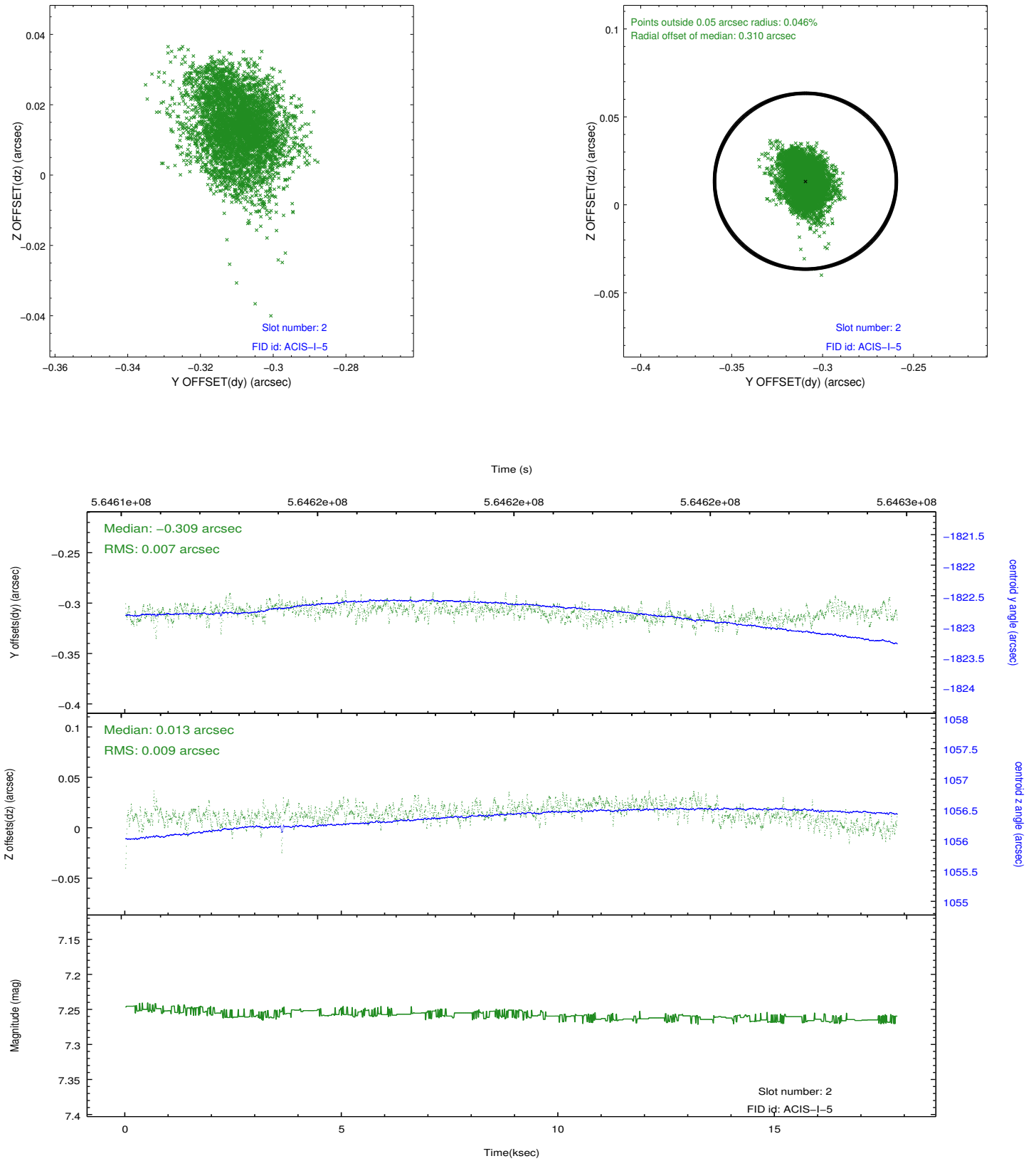
2.5.1 Slot 0



2.5.2 Slot 1



2.5.3 Slot 2



A Summary

A.1 Status

V&V Scientist	David Huenemoerder
V&V Date (YYYY-MM-DD)	2015.11.24
V&V Edition	1
V&V Disposition and Status	OK
V&V Charge Time	17.084100131512

A.2 Comments

Aspect review indicates solution is good including fid slot 1;

Comments for Obi 1

Fid in slot 1 radial offset > 0.400000 arcsec