

# V&V Reference Report

## L2 ASCDS Version : 7.6.9

Observation 1699 - L2 Version 001  
Chandra X-Ray Center

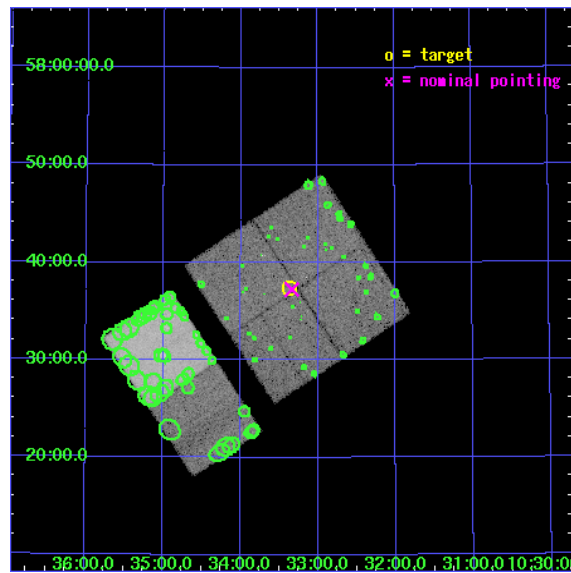
L2 Processing Date : Nov 29 2006

## Contents

<b>1</b>	<b>Front</b>	<b>2</b>
<b>2</b>	<b>OBI</b>	<b>3</b>
2.1	OBI . . . . .	3
2.1.1	Images . . . . .	3
2.1.2	Bias . . . . .	3
2.1.3	Parameters . . . . .	4
2.1.4	Events . . . . .	4
2.2	Compared Parameters . . . . .	5
2.3	Aspect . . . . .	6
2.4	Star Slots . . . . .	9
2.4.1	Slot 3 . . . . .	9
2.4.2	Slot 4 . . . . .	10
2.4.3	Slot 5 . . . . .	11
2.4.4	Slot 6 . . . . .	12
2.4.5	Slot 7 . . . . .	13
2.5	FID Slots . . . . .	14
2.5.1	Slot 0 . . . . .	14
2.5.2	Slot 1 . . . . .	15
2.5.3	Slot 2 . . . . .	16
<b>3</b>	<b>Point Sources</b>	<b>17</b>
<b>A</b>	<b>Summary</b>	<b>18</b>
A.1	Status . . . . .	18
A.2	Comments . . . . .	18

# 1 Front

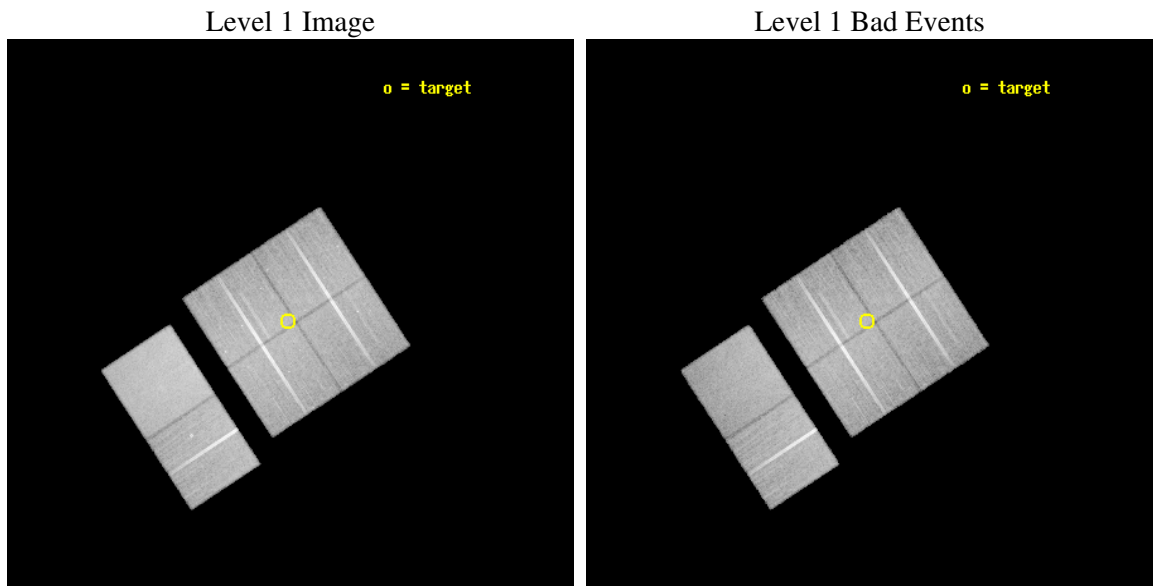
seq_num	900058
obs_id	1699
title	CHANDRA OBSERVATIONS OF THE DEEP ISO FIELD
observer	Dr. Richard Mushotzky
object	ISO NW #2
dtcycle	0
cycle	P
ra_targ	158.341667
dec_targ	57.623611
ra_nom	158.33426083596
dec_nom	57.620959061694
roll_nom	236.65568284015
revision	2
ontime	41257.600038424
livetime	40735.171464393
ontime0	41257.600038424
ontime1	41257.600038424
ontime2	41257.600038424
ontime3	41257.600038424
ontime6	41254.359048262
ontime7	41257.600038424
l2events	238422



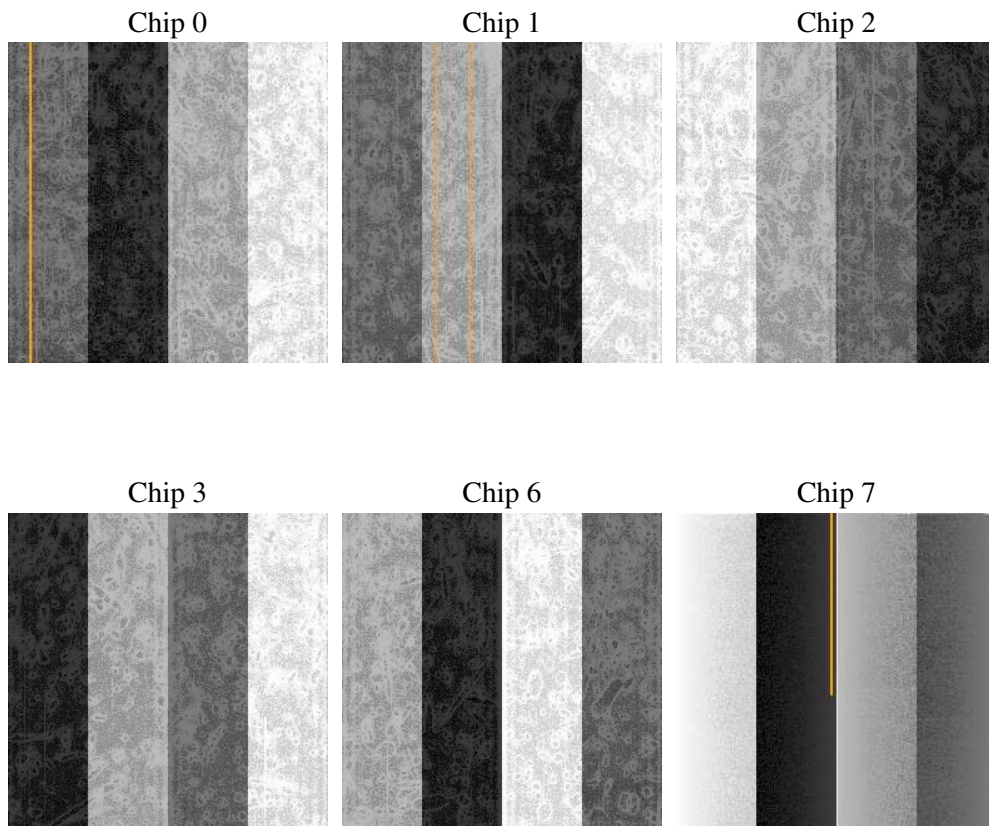
## 2 OBI

### 2.1 OBI

#### 2.1.1 Images



#### 2.1.2 Bias



### 2.1.3 Parameters

obi_num	1
ascdsver	7.6.9
caldsver	3.2.4
date	2006-11-29T14:07:14
revision	2

sched_exp_time	41300.000000
ontime	41261.146752208
ontime0	41264.387762278
ontime1	41261.146752208
ontime2	41261.146752208
ontime3	41261.146752208
ontime6	41257.905762047
ontime7	41261.146772116
l1events	1493360

### 2.1.4 Events

	ccd 0	ccd 1	ccd 2	ccd 3	ccd 6	ccd 7
level 1 events	219064	226267	242983	241719	254347	308980
rejected events	190128	195505	214652	213532	225342	191776
rejected %	86%	86%	88%	88%	88%	62%

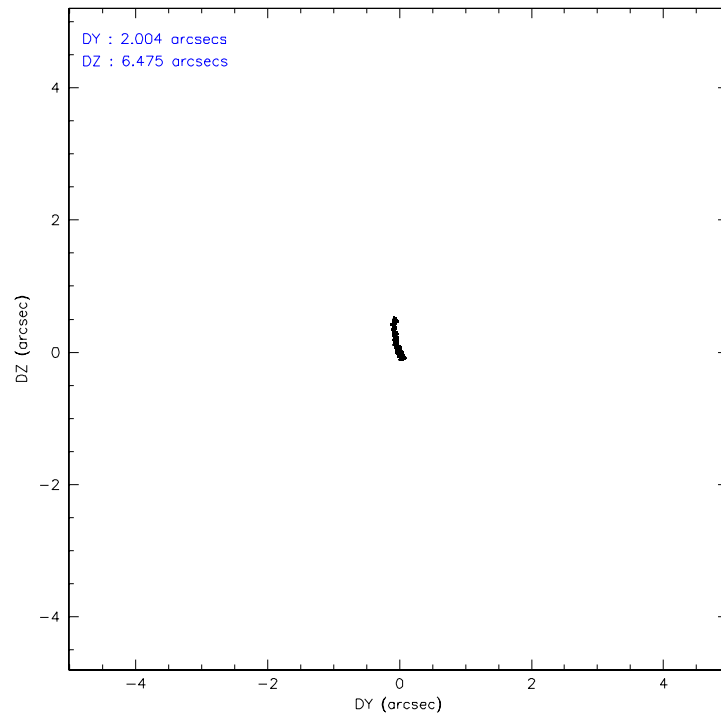
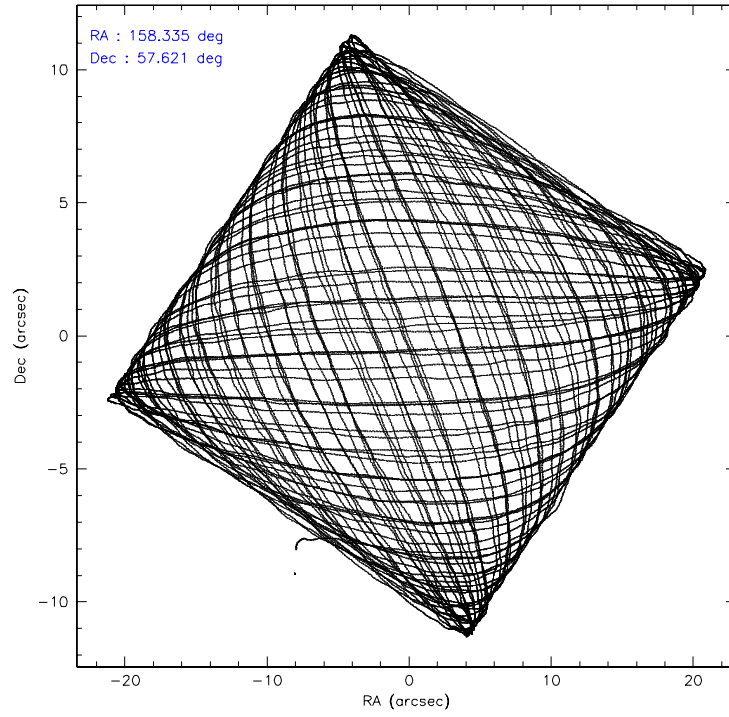
	ccd 0	ccd 1	ccd 2	ccd 3	ccd 6	ccd 7
grade 0 events	12259	12544	12156	12069	11922	7268
	5%	5%	5%	4%	4%	2%
grade 1 events	104	101	98	111	130	200
	0%	0%	0%	0%	0%	0%
grade 2 events	6252	6328	6039	5737	5911	28701
	2%	2%	2%	2%	2%	9%
grade 3 events	2732	3073	2700	2625	2782	6102
	1%	1%	1%	1%	1%	1%
grade 4 events	2687	3130	2531	2705	2666	5945
	1%	1%	1%	1%	1%	1%
grade 5 events	8755	9360	8351	9504	10403	20499
	3%	4%	3%	3%	4%	6%
grade 6 events	5007	5688	4907	5051	5725	69195
	2%	2%	2%	2%	2%	22%
grade 7 events	181268	186043	206201	203917	214808	171070
	82%	82%	84%	84%	84%	55%

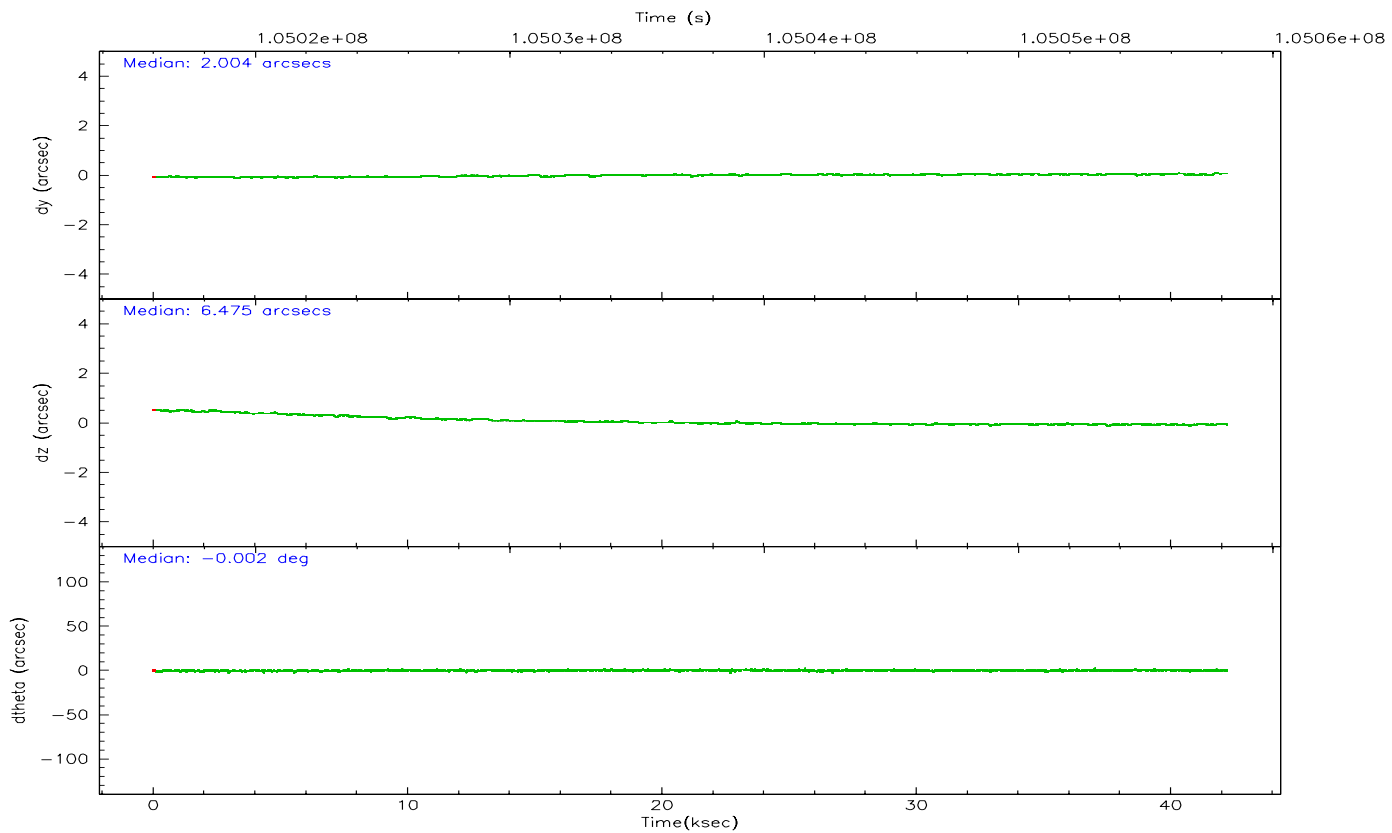
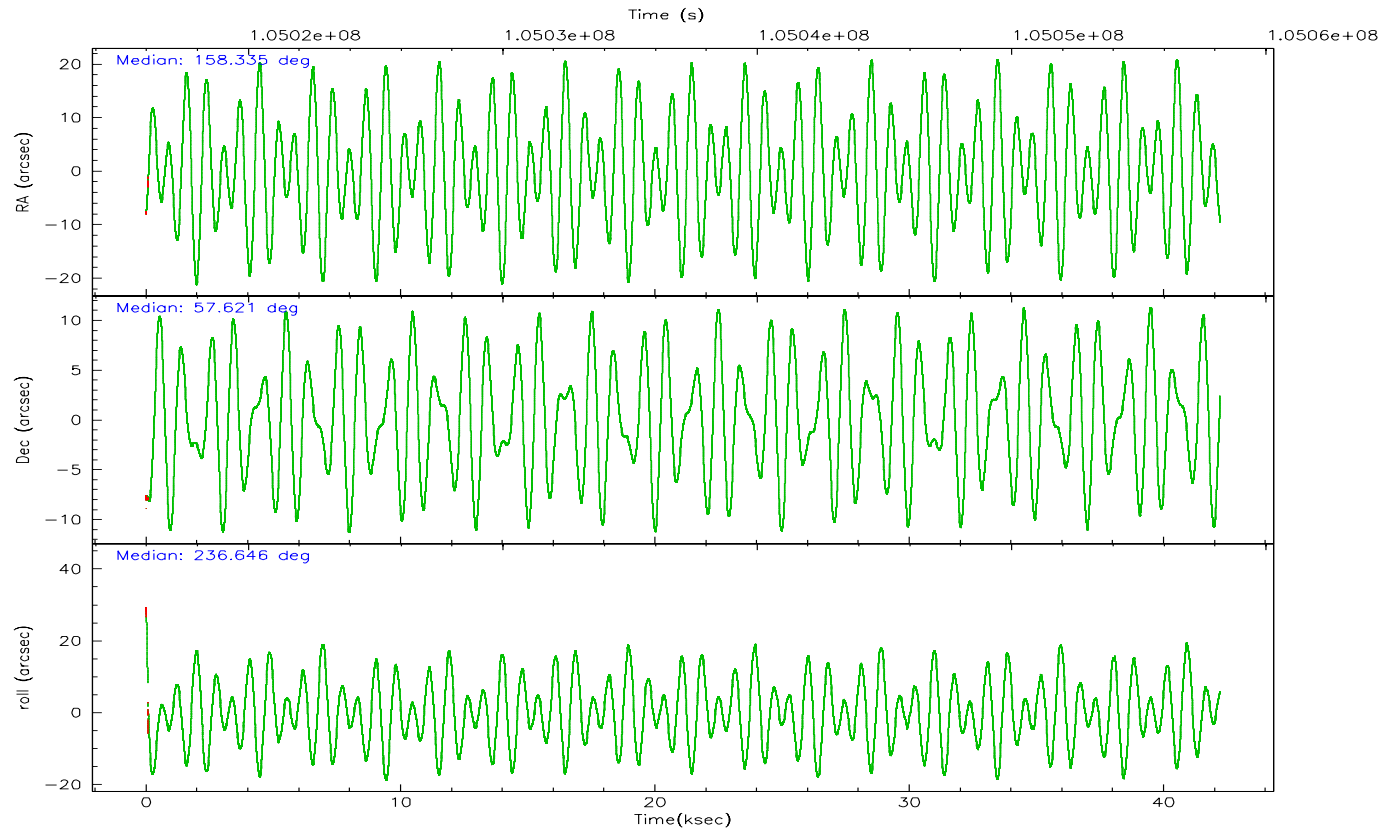


## 2.2 Compared Parameters

Parameter	Planned	Actual	Parameter	Planned	Actual
Instrument	ACIS	ACIS	Obspar format version number	6	6
Detector	ACIS-012367	ACIS-012367	Obspar file type	PREDICTED	ACTUAL
Grating	NONE	NONE	Obspar update status	NONE	UPDATED
Data mode	FAINT	FAINT	Number of optional ACIS chips dropped	0	0
Observation mode	POINTING	POINTING	On-chip summing requested	N	N
Pointing RA	158.337232	158.3342608359578	Subarray requested	NONE	NONE
Pointing Dec	57.648384	57.62095906169378	Alternating exposures requested	N	N
Pointing Roll	236.444482	236.6556828401549	Primary exposure time	0.000000	3.2
SIM focus pos (mm)	-0.782348	-0.7809083437167272			
SIM defocus (mm)	0	0.001439871863259334			
SIM translation stage pos (mm)	-233.592463	-233.5874344608287			
SIM translation stage offset (mm)	0	-0.005018542100998502			
Observation start time	105016902.184000	105015578.14967			
Observation start date	2001-04-30T11:20:38	2001-04-30T10:59:38			
Observation end time	105058202.184000	105059234.95137			
Observation end date	2001-04-30T22:48:58	2001-04-30T23:07:14			
Read mode	TIMED	TIMED			

## 2.3 Aspect



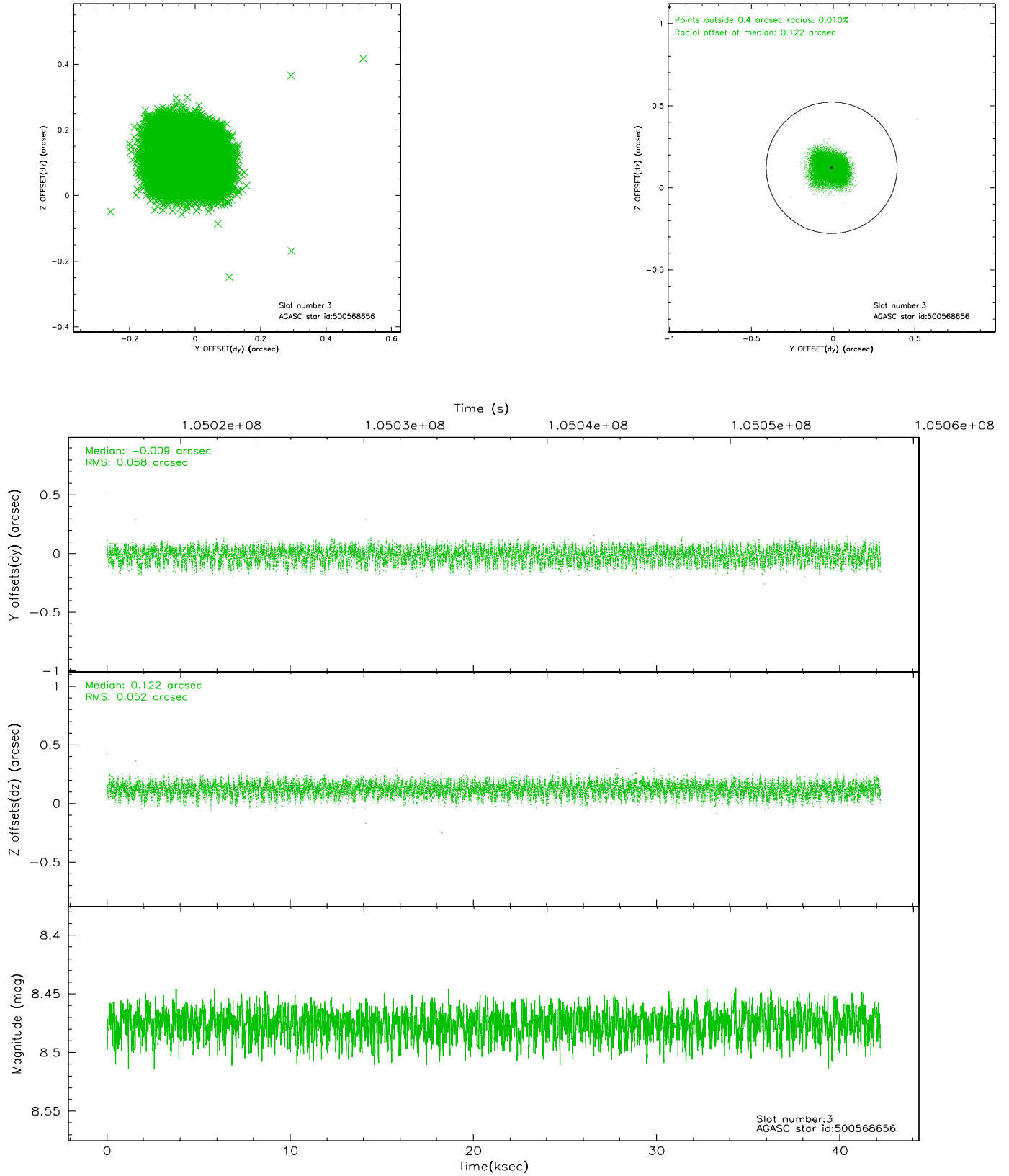


### Slot Statistics

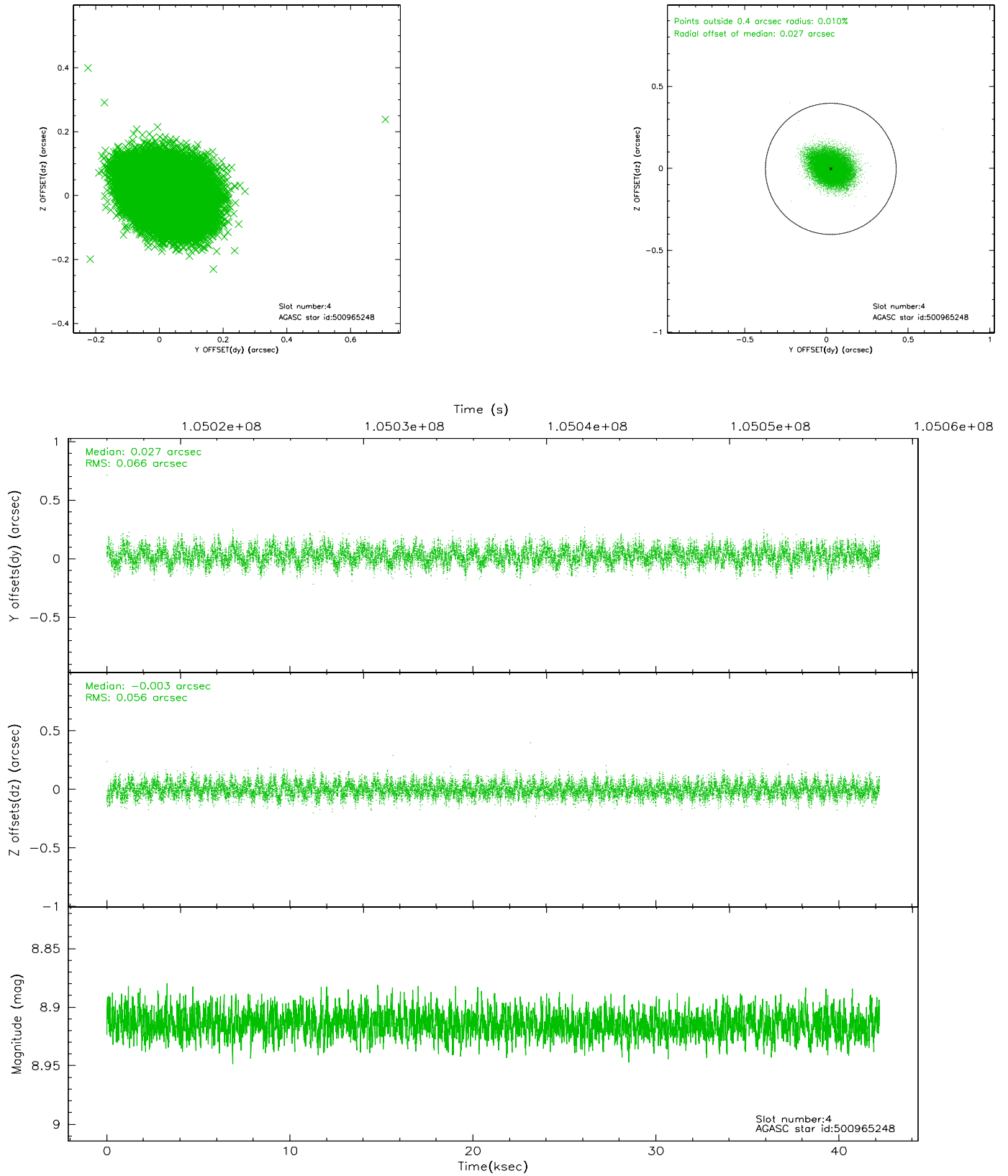
slot	status	id	mag	n_pts	med_dy	med_dz	dr1	dr2	ra	dec	mean_y	mean_z
0	FID	ACIS-I-2	7.15	10290	-0.035	-0.048	0.009	0.015	0.000000	0.000000	-756.37	-836.35
1	FID	ACIS-I-4	7.18	10285	-0.052	0.041	0.006	0.011	0.000000	0.000000	2157.65	1069.92
2	FID	ACIS-I-5	7.23	10289	-0.014	0.076	0.010	0.017	0.000000	0.000000	-1810.18	1067.79
3	GUIDE	500568656	8.48	20572	-0.009	0.122	0.084	0.132	159.217900	57.306375	70.64	2101.41
4	GUIDE	500965248	8.91	20575	0.027	-0.003	0.092	0.147	157.040068	57.653140	1347.91	-2104.59
5	GUIDE	500569128	9.03	20505	0.041	-0.084	0.071	0.121	157.930103	57.115848	2036.09	394.98
6	GUIDE	500959408	9.50	20570	0.052	-0.044	0.088	0.144	157.361573	57.862425	380.56	-1990.50
7	GUIDE	500962432	9.53	20572	-0.104	0.011	0.079	0.131	158.977500	58.020820	-1796.30	272.42

## 2.4 Star Slots

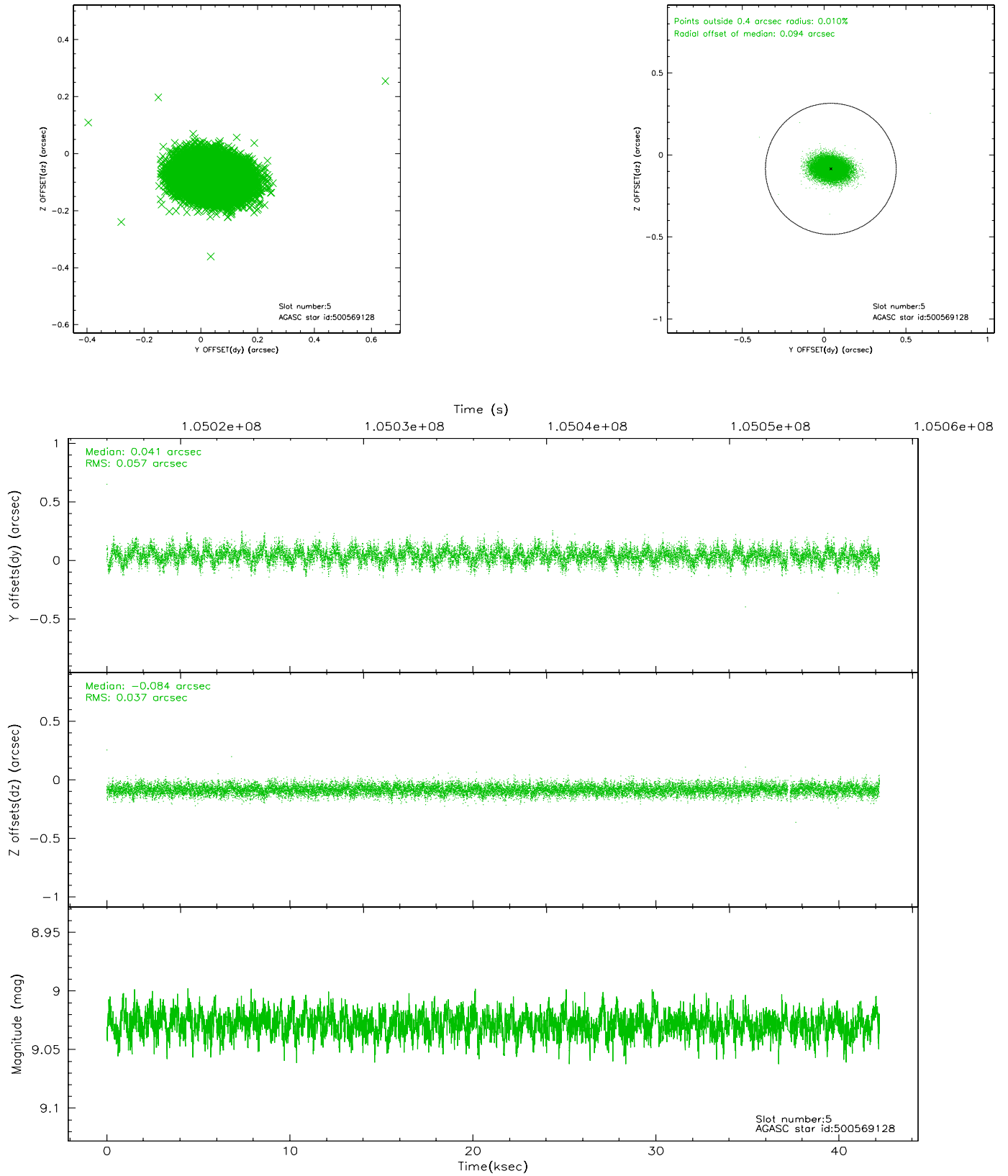
### 2.4.1 Slot 3



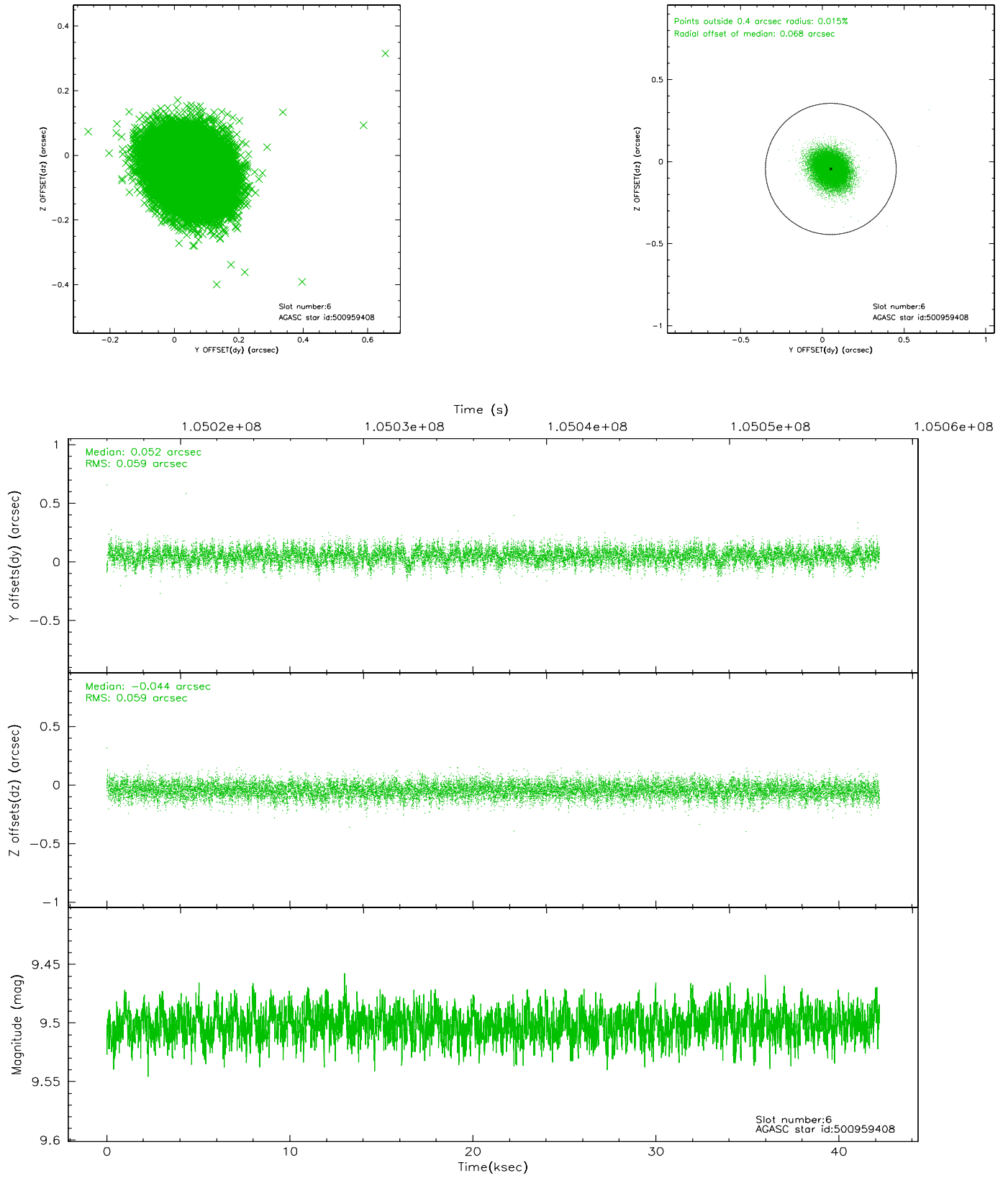
## 2.4.2 Slot 4



### 2.4.3 Slot 5

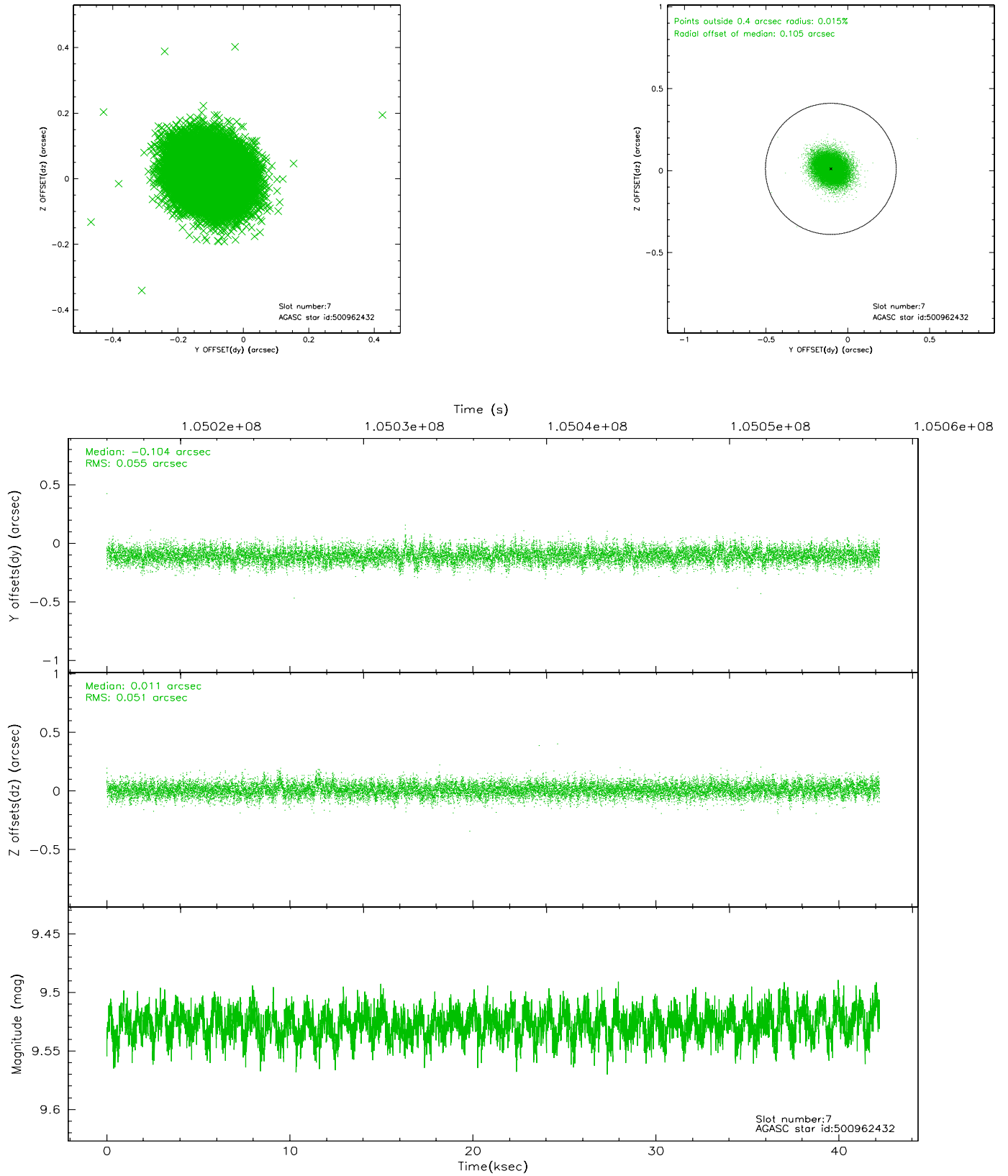


## 2.4.4 Slot 6



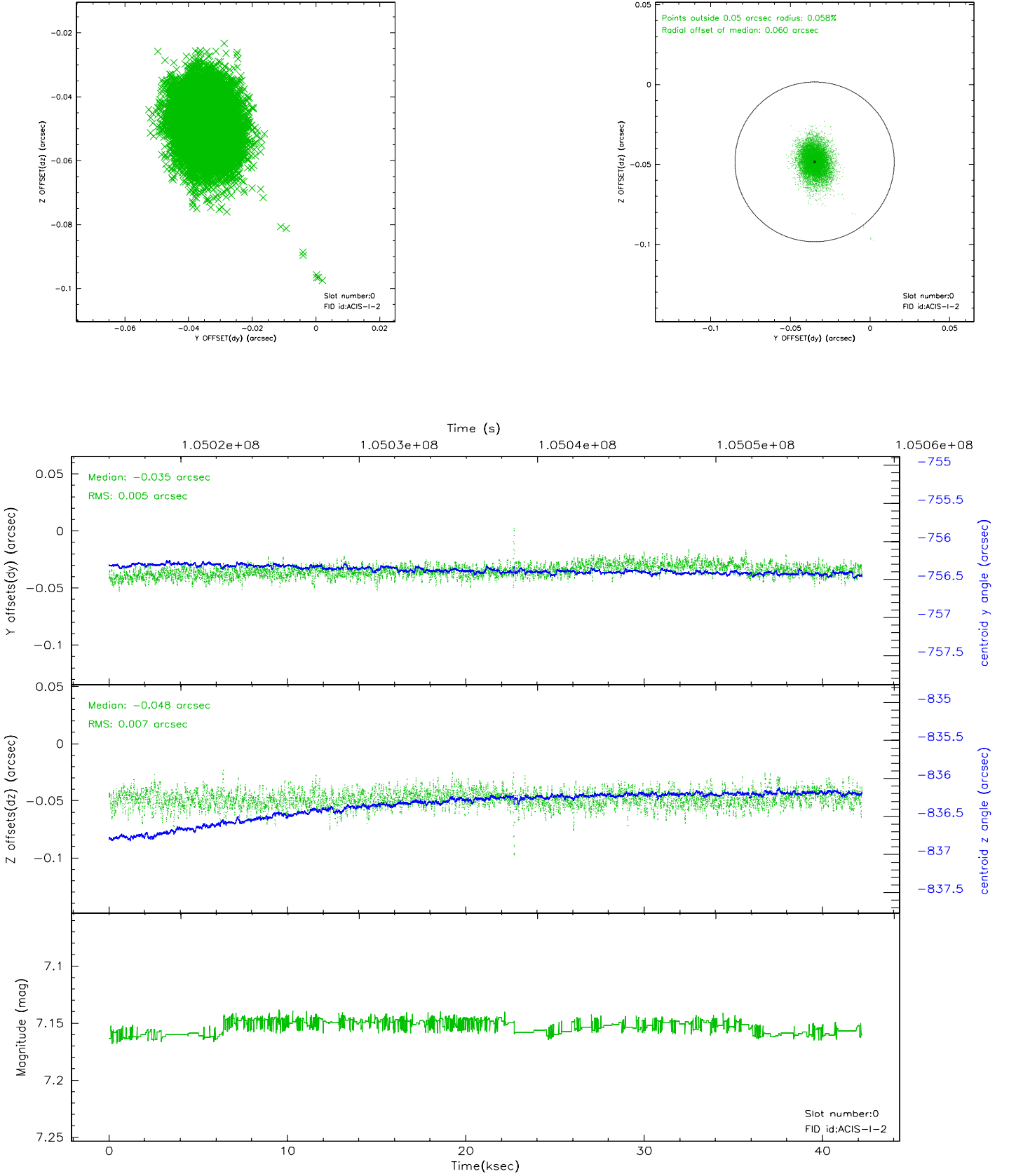


## 2.4.5 Slot 7

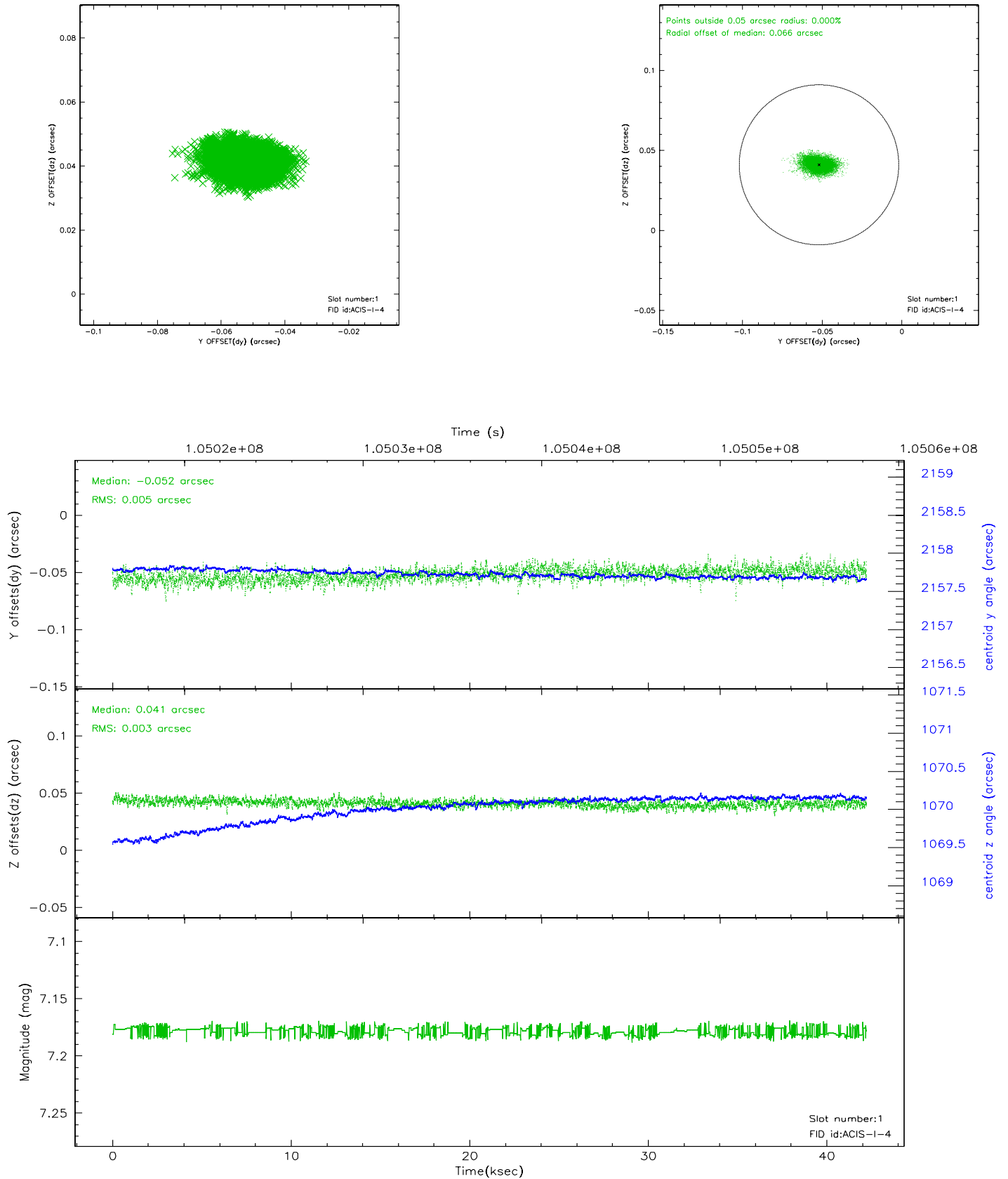


## 2.5 FID Slots

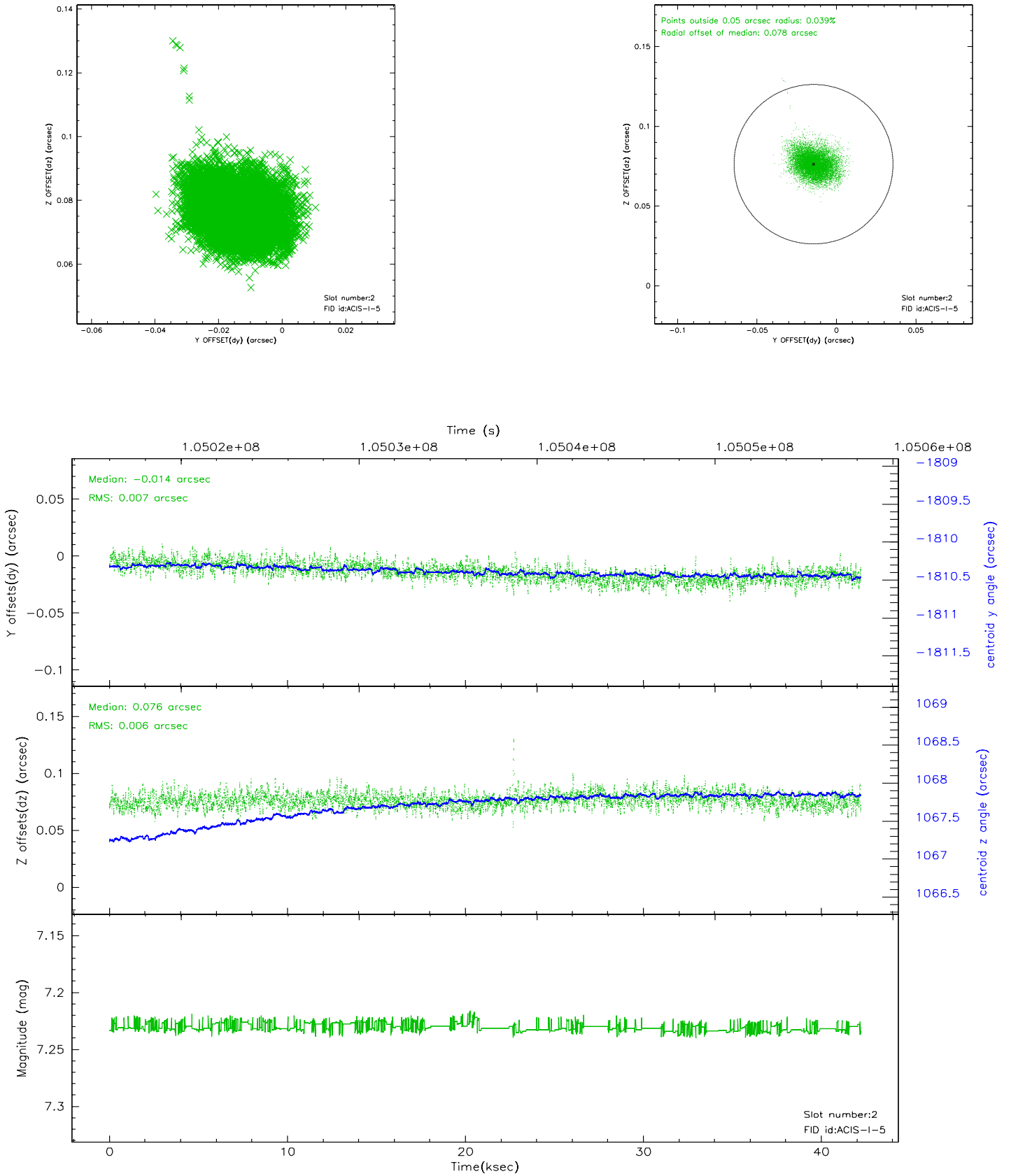
### 2.5.1 Slot 0



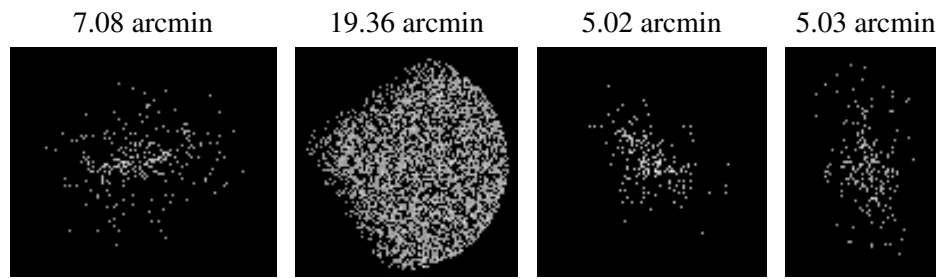
## 2.5.2 Slot 1



### 2.5.3 Slot 2



### 3 Point Sources



## A Summary

### A.1 Status

V&V Scientist	Beth Sundheim
V&V Date (YYYY-MM-DD)	2006.11.29
V&V Edition	1
V&V Disposition and Status	OK
V&V Charge Time	41.3

### A.2 Comments