

V&V Reference Report

L2 ASCDS Version : 10.3.1

Observation 15739 - L2 Version 1
Chandra X-Ray Center

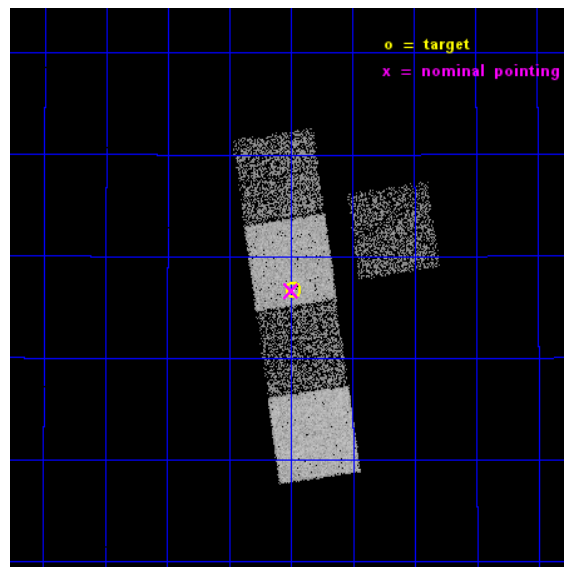
L2 Processing Date : Jan 16 2015

Contents

1	Front	2
2	OBI	3
2.1	OBI	3
2.1.1	Images	3
2.1.2	Bias	3
2.1.3	Parameters	4
2.1.4	Events	4
2.2	Compared Parameters	5
2.3	Aspect	6
2.4	Star Slots	9
2.4.1	Slot 3	9
2.4.2	Slot 4	10
2.4.3	Slot 5	11
2.4.4	Slot 6	12
2.4.5	Slot 7	13
2.5	FID Slots	14
2.5.1	Slot 0	14
2.5.2	Slot 1	15
2.5.3	Slot 2	16
A	Summary	17
A.1	Status	17
A.2	Comments	17

1 Front

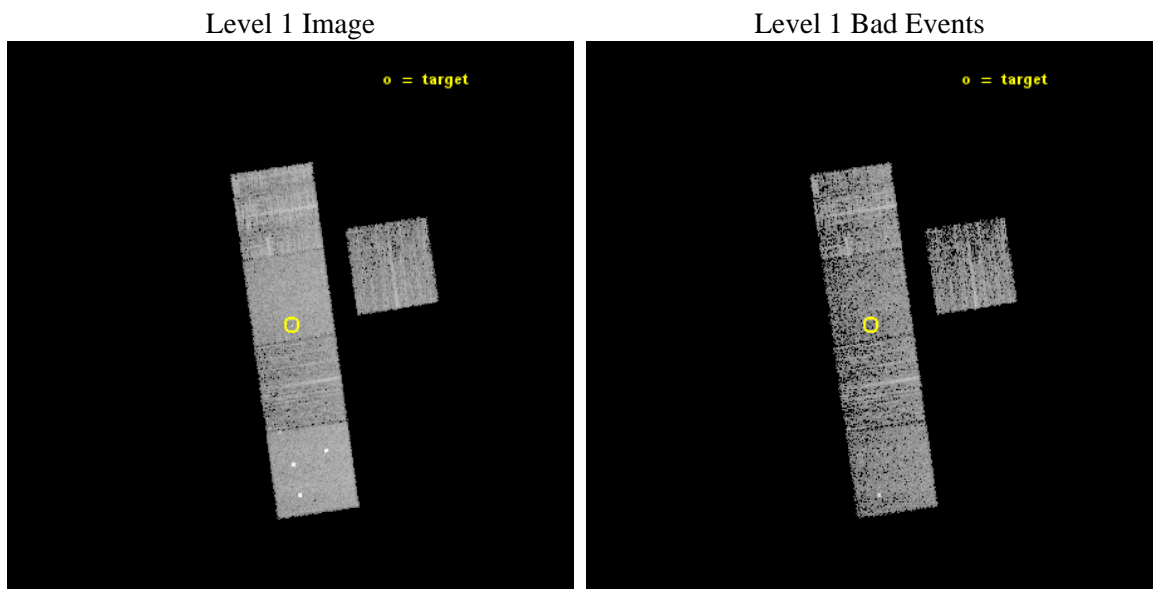
seq_num	300323	Sequence number
obs_id	15739	Observation id
title	Spatial Diagnostics of Potential X-ray Remnants in Old Novae T Aur and DK Lac	Proposal title
observer	Jeremy Drake	Principal investigator
object	T Aur	Source name
dtcycle	0	
cycle	P	events from which exps? Prim/Second/Both
ra_targ	82.99625	Observer's specified target RA [deg]
dec_targ	30.445833	Observer's specified target Dec [deg]
ra_nom	82.99891986495	Nominal RA [deg]
dec_nom	30.443805938599	Nominal Dec [deg]
roll_nom	261.64234550434	Nominal Roll [deg]
revision	1	Processing version of data
ontime	5062.300039053	Sum of GTIs [s]
livetime	4996.1573622317	Livetime [s]
ontime3	5062.300039053	Sum of GTIs [s]
ontime5	5062.300039053	Sum of GTIs [s]
ontime6	5062.300039053	Sum of GTIs [s]
ontime7	5062.300039053	Sum of GTIs [s]
ontime8	5062.300039053	Sum of GTIs [s]
l2events	43715	Number of level 2 events



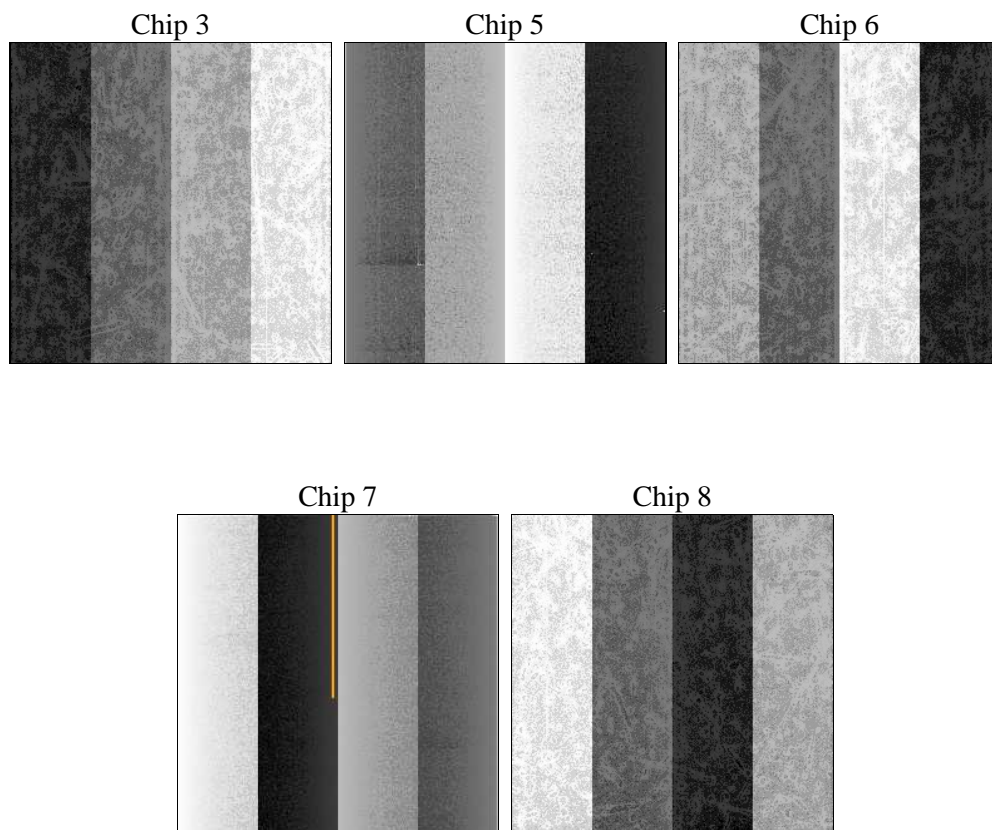
2 OBI

2.1 OBI

2.1.1 Images



2.1.2 Bias



2.1.3 Parameters

obi_num	0	Obi number	sched_exp_time	5000.000000	[s] Scheduled observation exposure time
ascdsver	10.3.1	Processing system revision	ontime	5062.300039053	Sum of GTIs [s]
caldsver	4.6.5	 	ontime3	5062.300039053	Sum of GTIs [s]
date	2015-01-17T01:06:58	Date and time of file creation	ontime5	5062.300039053	Sum of GTIs [s]
revision	1	Processing version of data	ontime6	5062.300039053	Sum of GTIs [s]
			ontime7	5062.300039053	Sum of GTIs [s]
			ontime8	5062.300039053	Sum of GTIs [s]
			l1events	170723	Number of level 1 events

2.1.4 Events

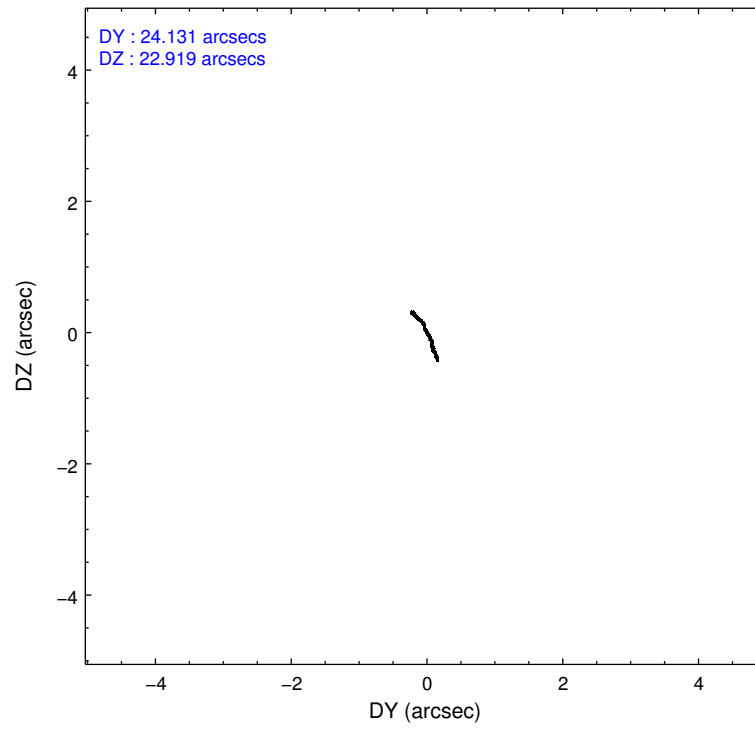
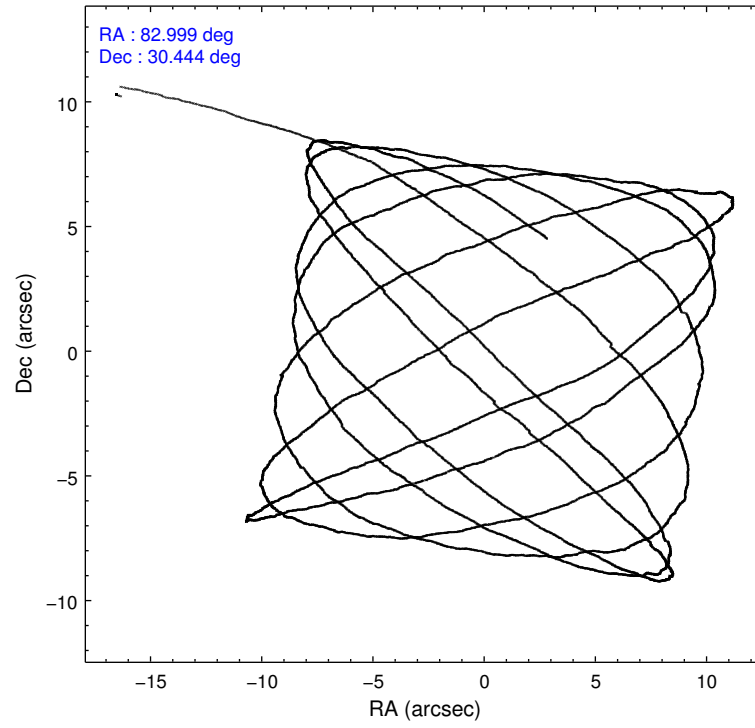
	ccd 3	ccd 5	ccd 6	ccd 7	ccd 8
level 1 events	24648	46749	26120	35745	37461
rejected events	21892	22679	22964	19953	27227
rejected %	88%	48%	87%	55%	72%

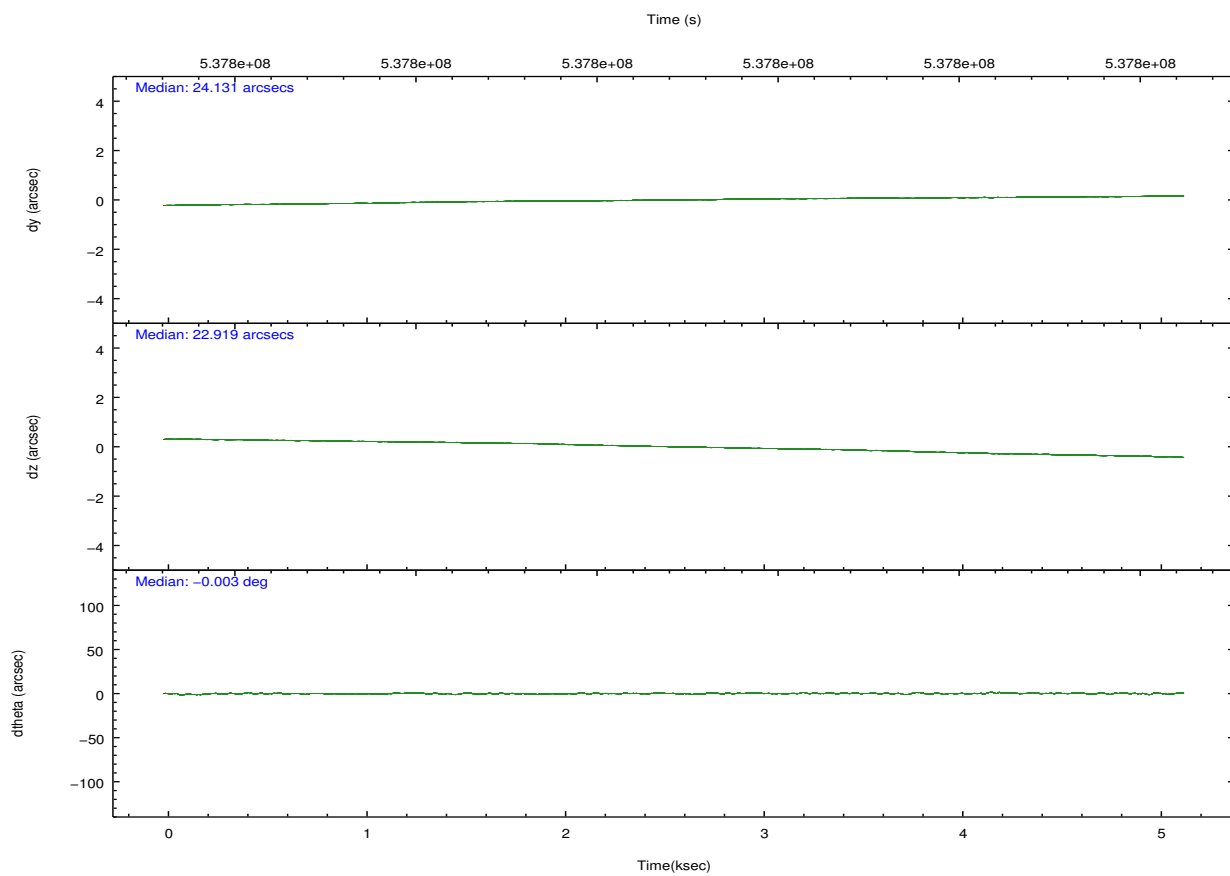
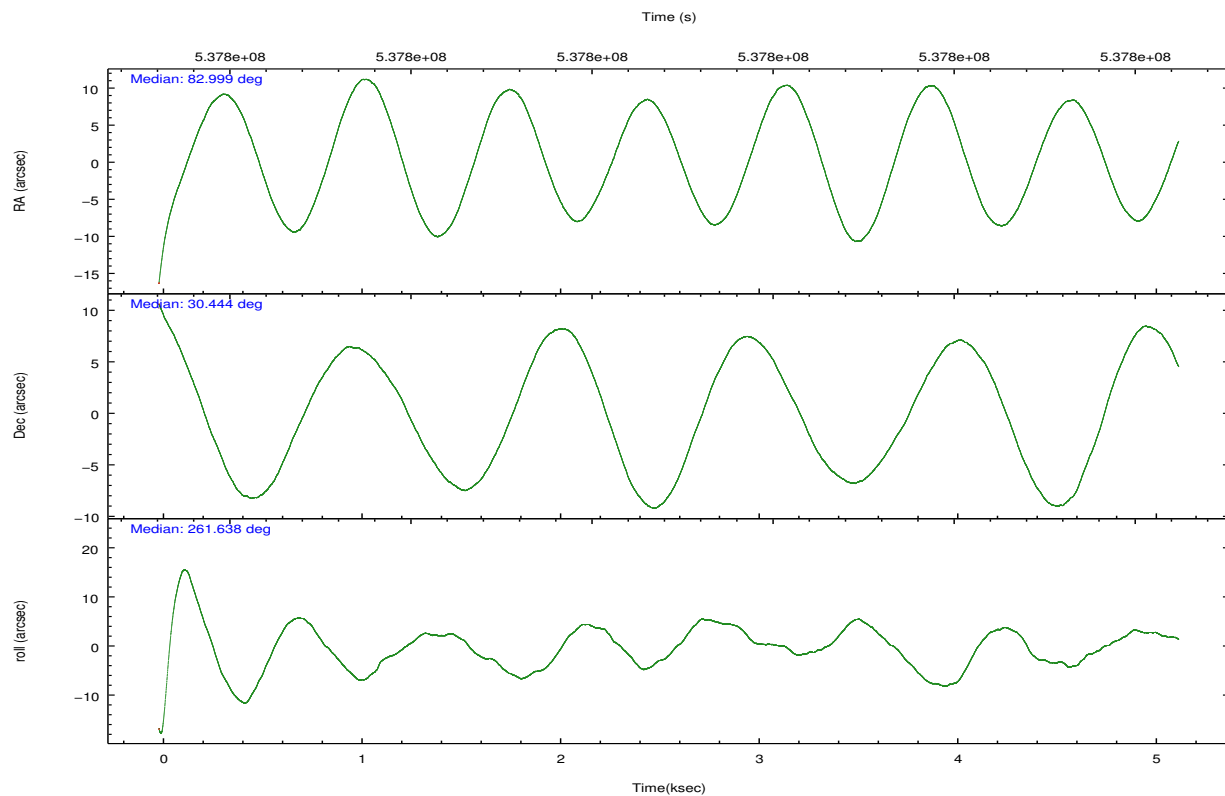
	ccd 3	ccd 5	ccd 6	ccd 7	ccd 8
grade 0 events	875	4327	1021	1305	2930
	3%	9%	3%	3%	7%
grade 1 events	15	113	10	38	25
	0%	0%	0%	0%	0%
grade 2 events	664	6970	747	3222	2404
	2%	14%	2%	9%	6%
grade 3 events	317	726	337	1312	1095
	1%	1%	1%	3%	2%
grade 4 events	305	750	325	1369	1033
	1%	1%	1%	3%	2%
grade 5 events	1388	3295	1341	3719	1976
	5%	7%	5%	10%	5%
grade 6 events	595	11308	730	8590	2773
	2%	24%	2%	24%	7%
grade 7 events	20489	19260	21609	16190	25225
	83%	41%	82%	45%	67%

2.2 Compared Parameters

Parameter	Planned	Actual	Parameter	Planned	Actual
Instrument	ACIS	ACIS	Obspar format version number	7	7
Detector	ACIS-35678	ACIS-35678	Obspar file type	PREDICTED	ACTUAL
Grating	NONE	NONE	Obspar update status	NONE	UPDATED
Data mode	VFAINT	VFAINT	CCD I0 on	N	N
Observation mode	POINTING	POINTING	CCD I1 on	N	N
[deg] Pointing RA	82.986804	82.99891986494961	CCD I2 on	N	N
[deg] Pointing Dec	30.469125	30.44380593859933	CCD I3 on	O4	Y
[deg] Pointing Roll	261.491968	261.6423455043364	CCD S0 on	N	N
[mm] SIM focus pos	-0.684267	-0.6828225247311905	CCD S1 on	O3	Y
[mm] SIM defocus	0	0.001444936568705701	CCD S2 on	O2	Y
[mm] SIM translation stage pos	-190.132523	-190.1425803651734	CCD S3 on	Y	Y
[mm] SIM translation stage offset	0	0.01005778216563158	CCD S4 on	O1	Y
[s] Observation start time (MET)	537796977.184000	537795729.70163	CCD S5 on	N	N
Observation start date	2015-01-16T12:01:50	2015-01-16T11:42:09	Number of optional ACIS chips dropped	0	0
[s] Observation end time (MET)	537801977.184000	537802867.28953	On-chip summing requested	N	N
Observation end date	2015-01-16T13:25:10	2015-01-16T13:41:07	Subarray requested	NONE	NONE
Read mode	TIMED	TIMED	Alternating exposures requested	N	N
			[s] Primary exposure time	0.000000	3.1

2.3 Aspect



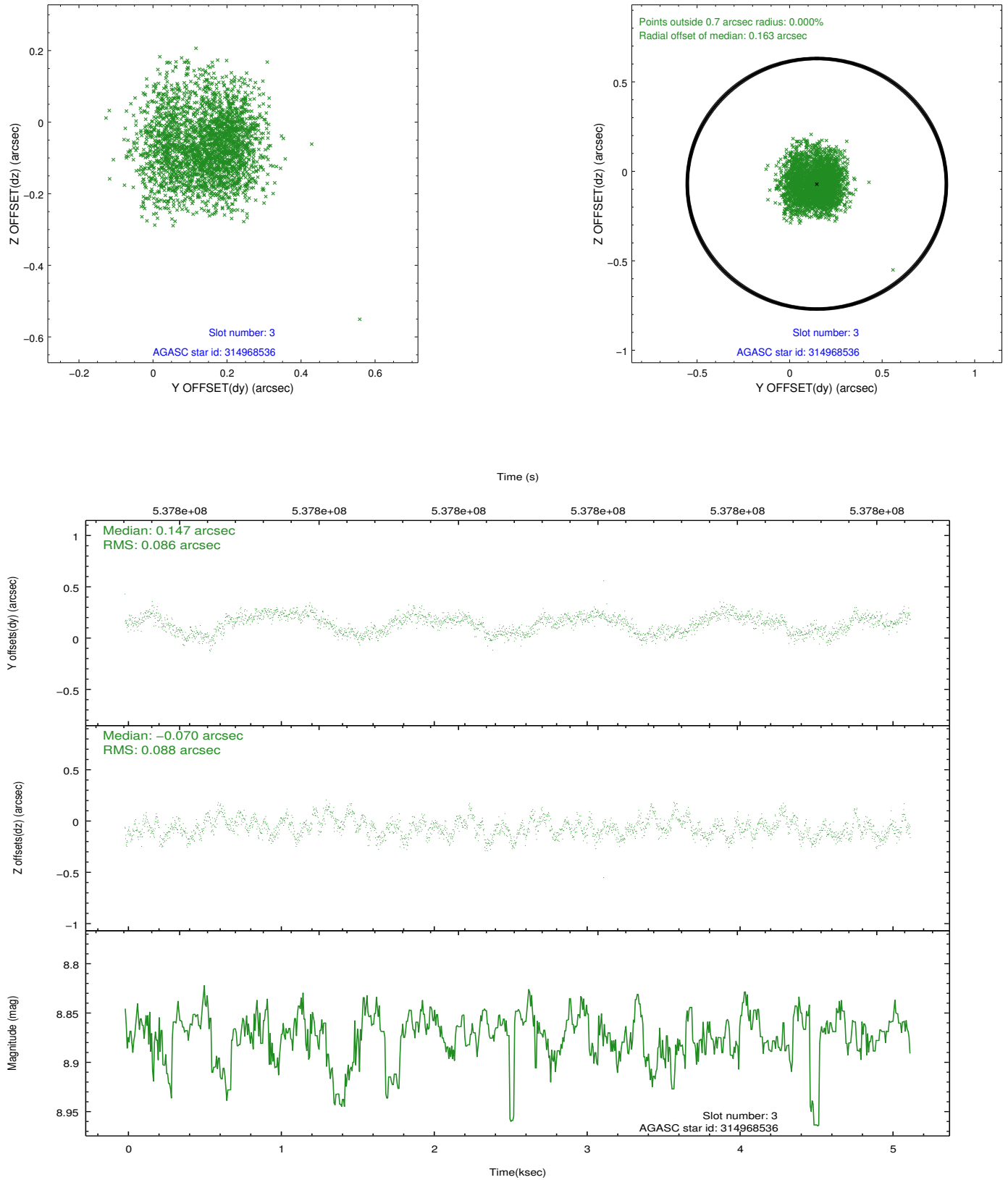


Slot Statistics

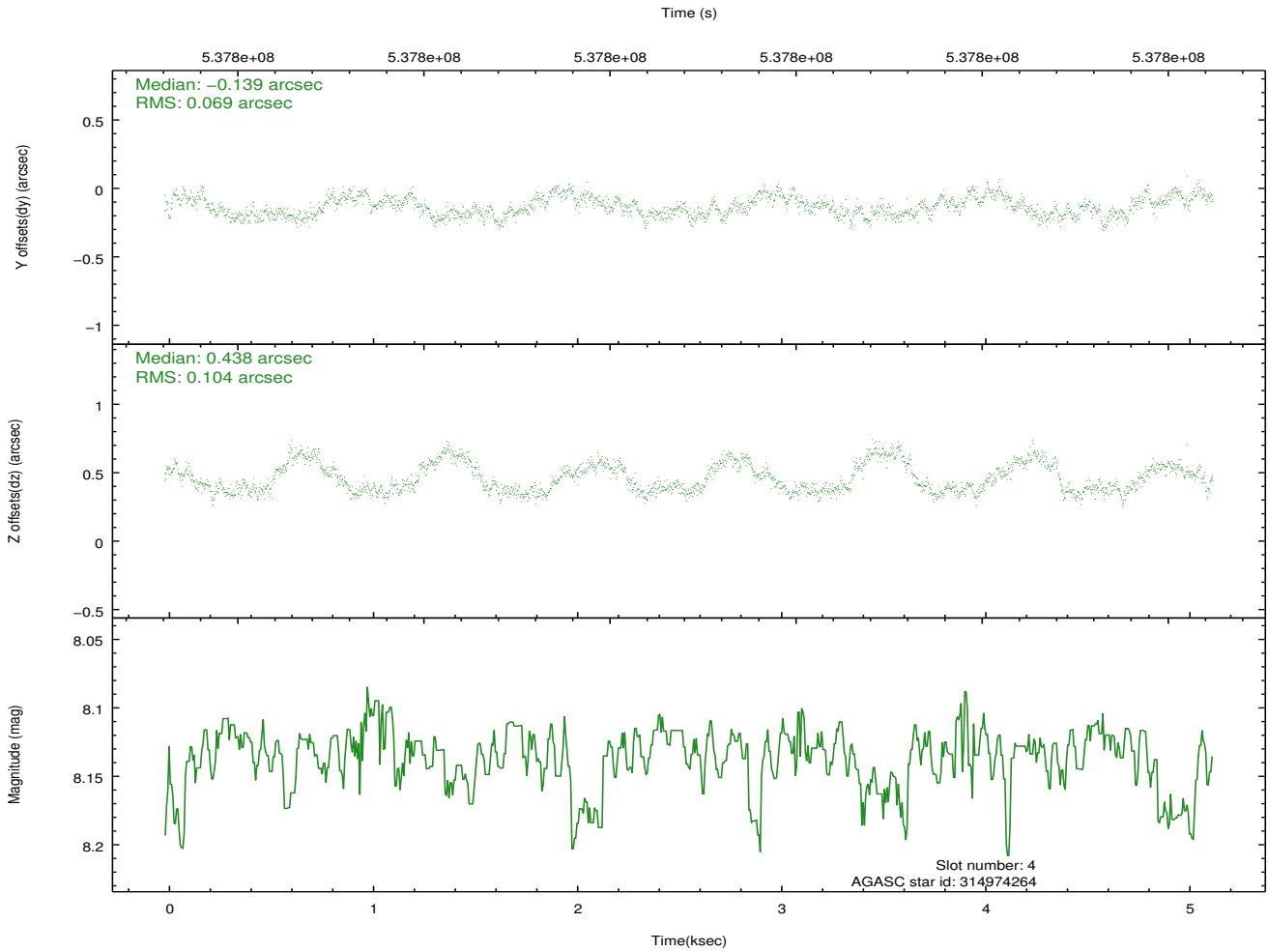
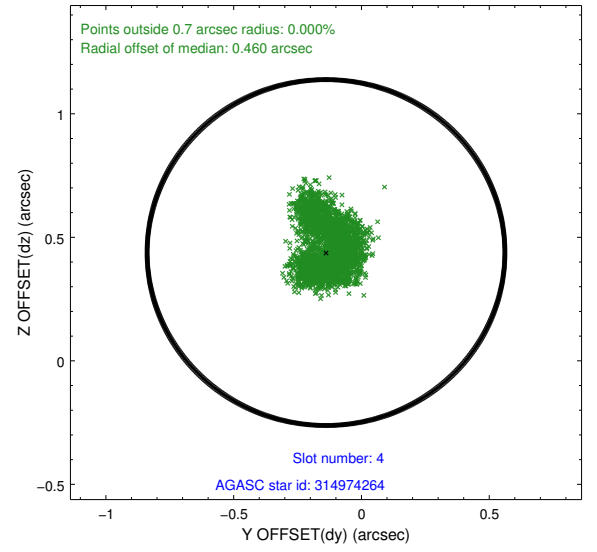
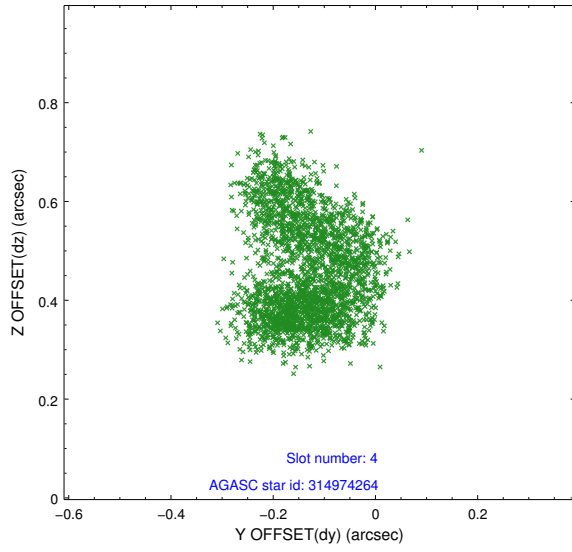
slot	status	used	id	mag	n_pts	med_dy	med_dz	dr1	dr2	ra	dec	mean_y	mean_z
0	FID		ACIS-S-1	7.03	1253	-0.068	0.001	0.009	0.016	0.000000	0.000000	918.57	-1740.10
1	FID		ACIS-S-4	7.02	1253	0.167	0.033	0.006	0.011	0.000000	0.000000	2136.91	162.82
2	FID		ACIS-S-6	7.17	1253	-0.122	-0.023	0.009	0.014	0.000000	0.000000	386.04	801.52
3	GUIDE	used	314968536	8.87	2505	0.147	-0.070	0.133	0.204	82.399706	30.750767	-737.94	-1946.51
4	GUIDE	used	314974264	8.13	2506	-0.139	0.438	0.133	0.212	82.975618	30.927133	-1625.49	-277.82
5	GUIDE	used	315099312	9.24	2504	-0.079	-0.424	0.187	0.311	83.635381	30.616594	-828.44	1908.01
6	GUIDE	used	314972600	9.08	2506	0.080	0.133	0.142	0.219	82.939074	31.114077	-2274.27	-487.57
7	GUIDE	used	315103056	9.00	2505	-0.008	-0.112	0.112	0.183	83.669409	31.033274	-2327.06	1781.40

2.4 Star Slots

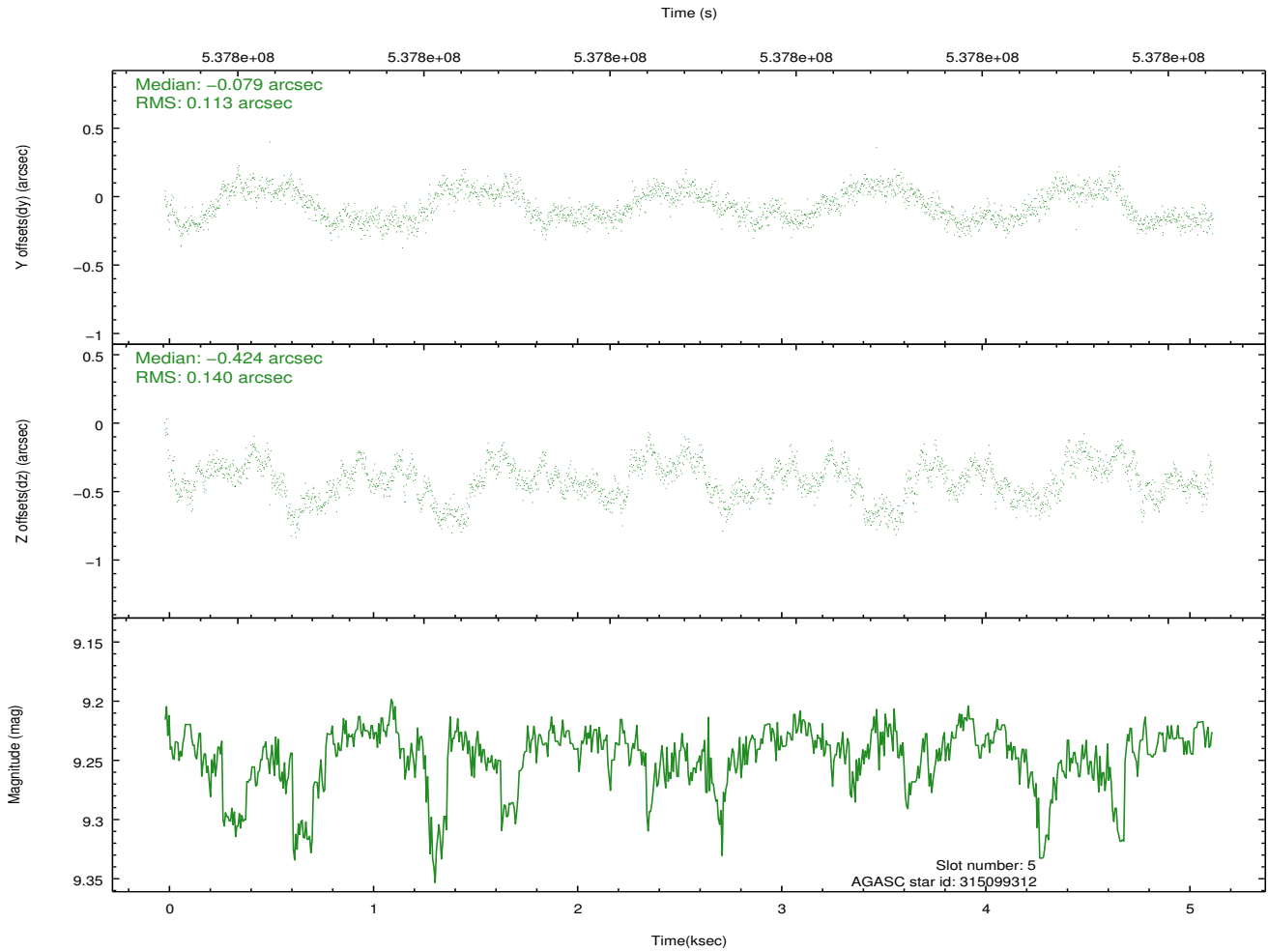
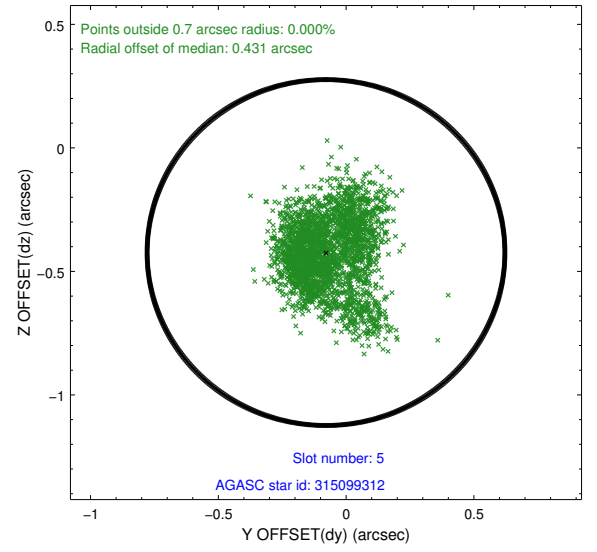
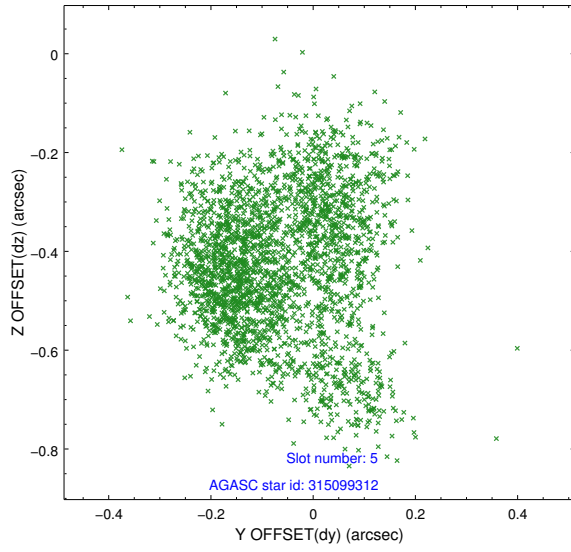
2.4.1 Slot 3



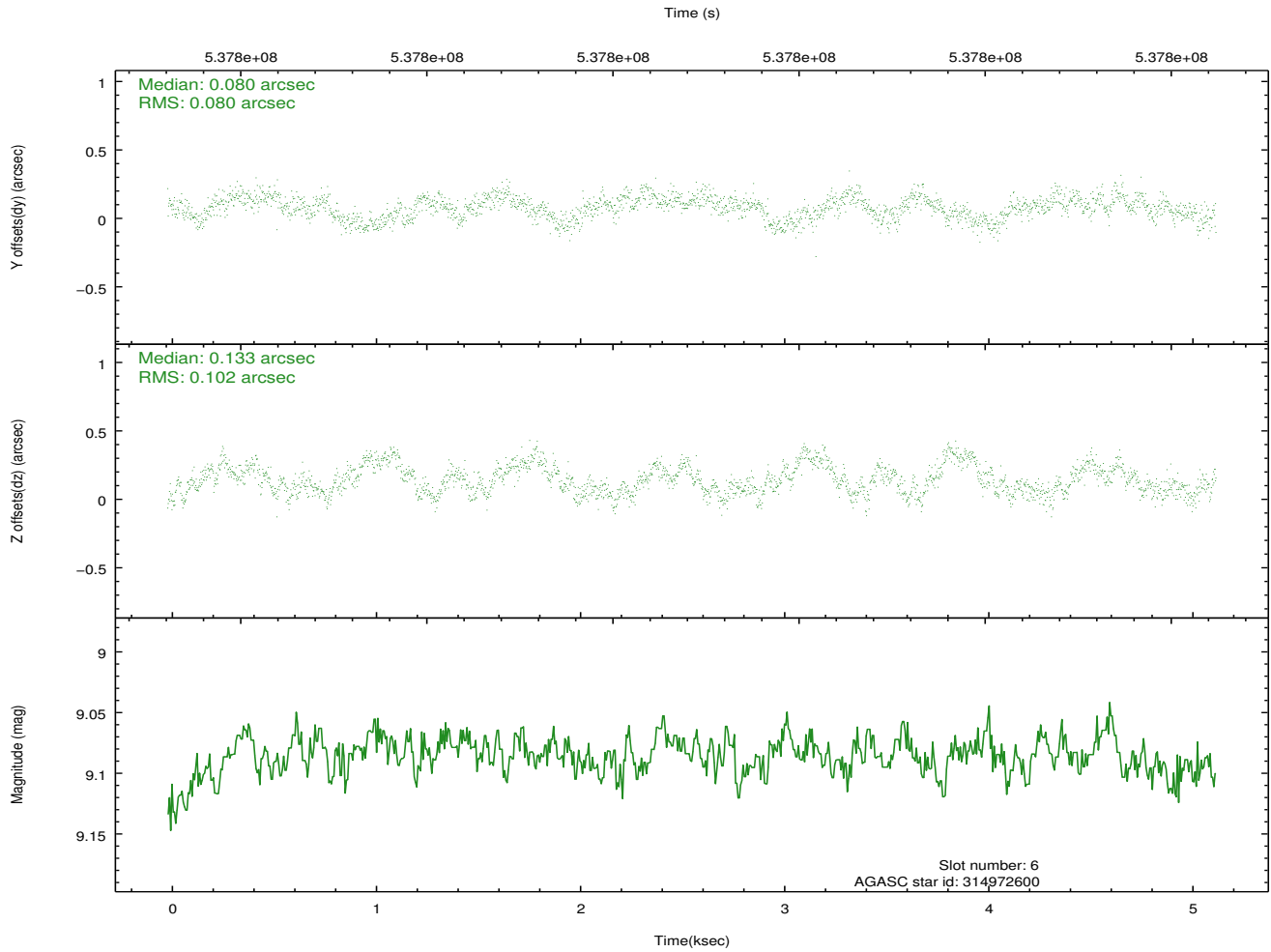
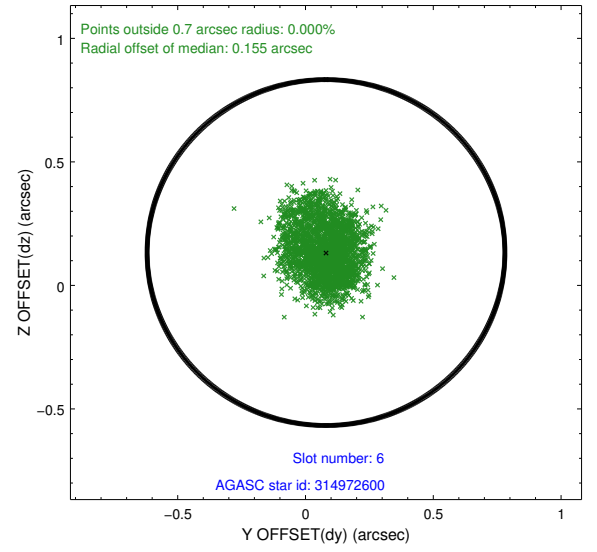
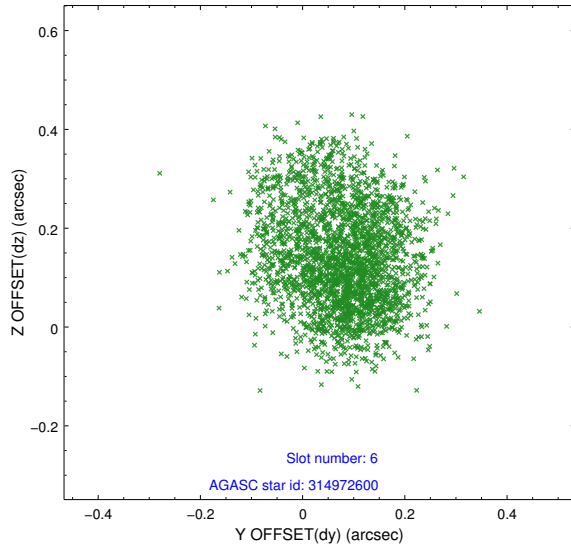
2.4.2 Slot 4



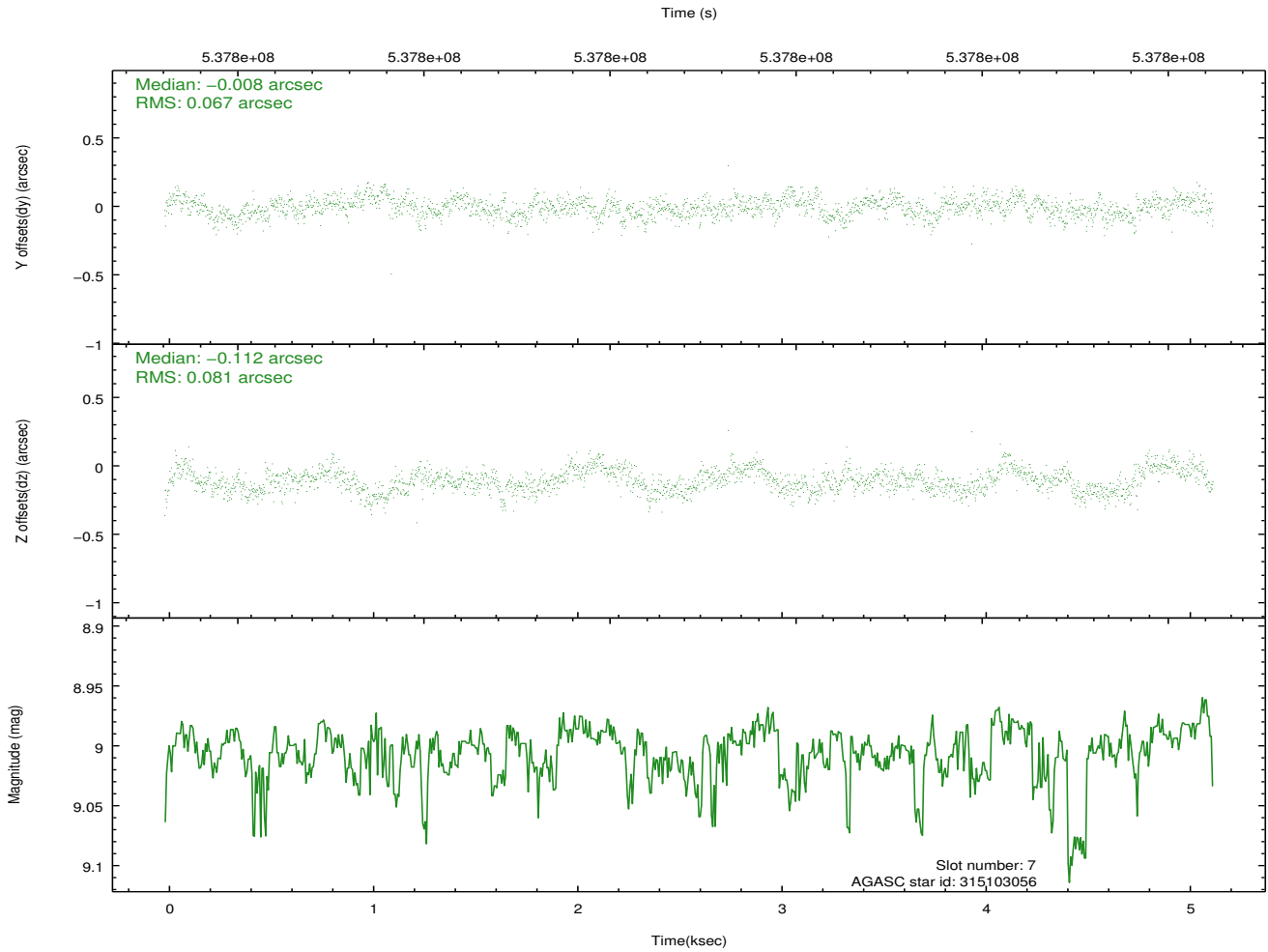
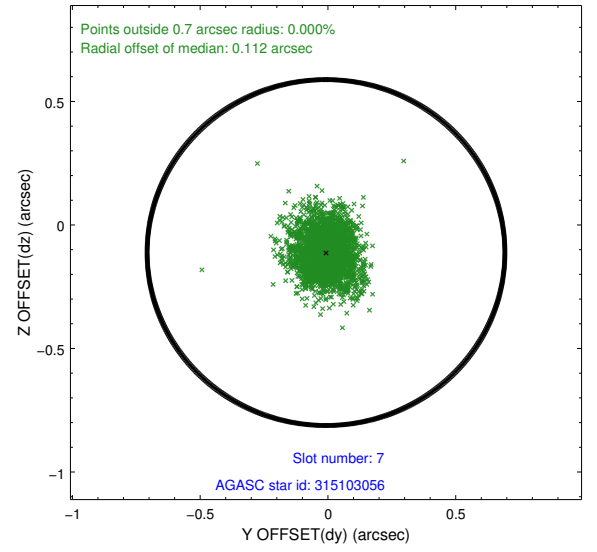
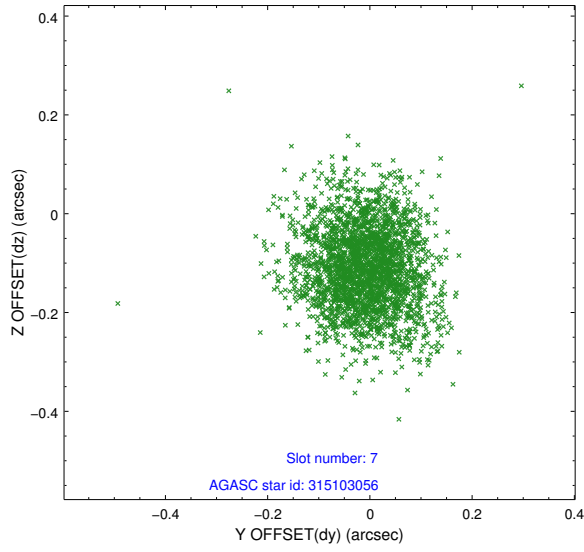
2.4.3 Slot 5



2.4.4 Slot 6

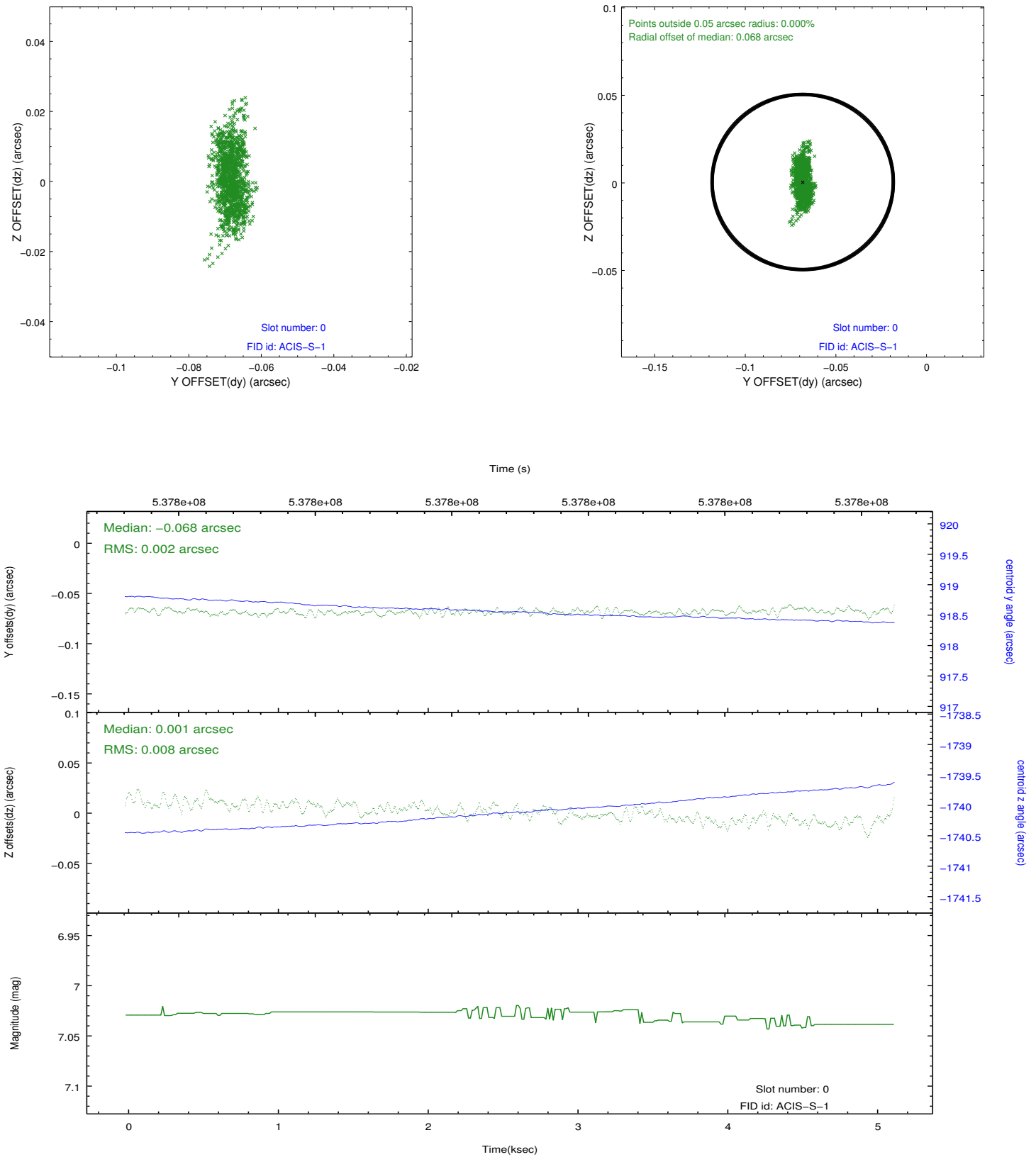


2.4.5 Slot 7

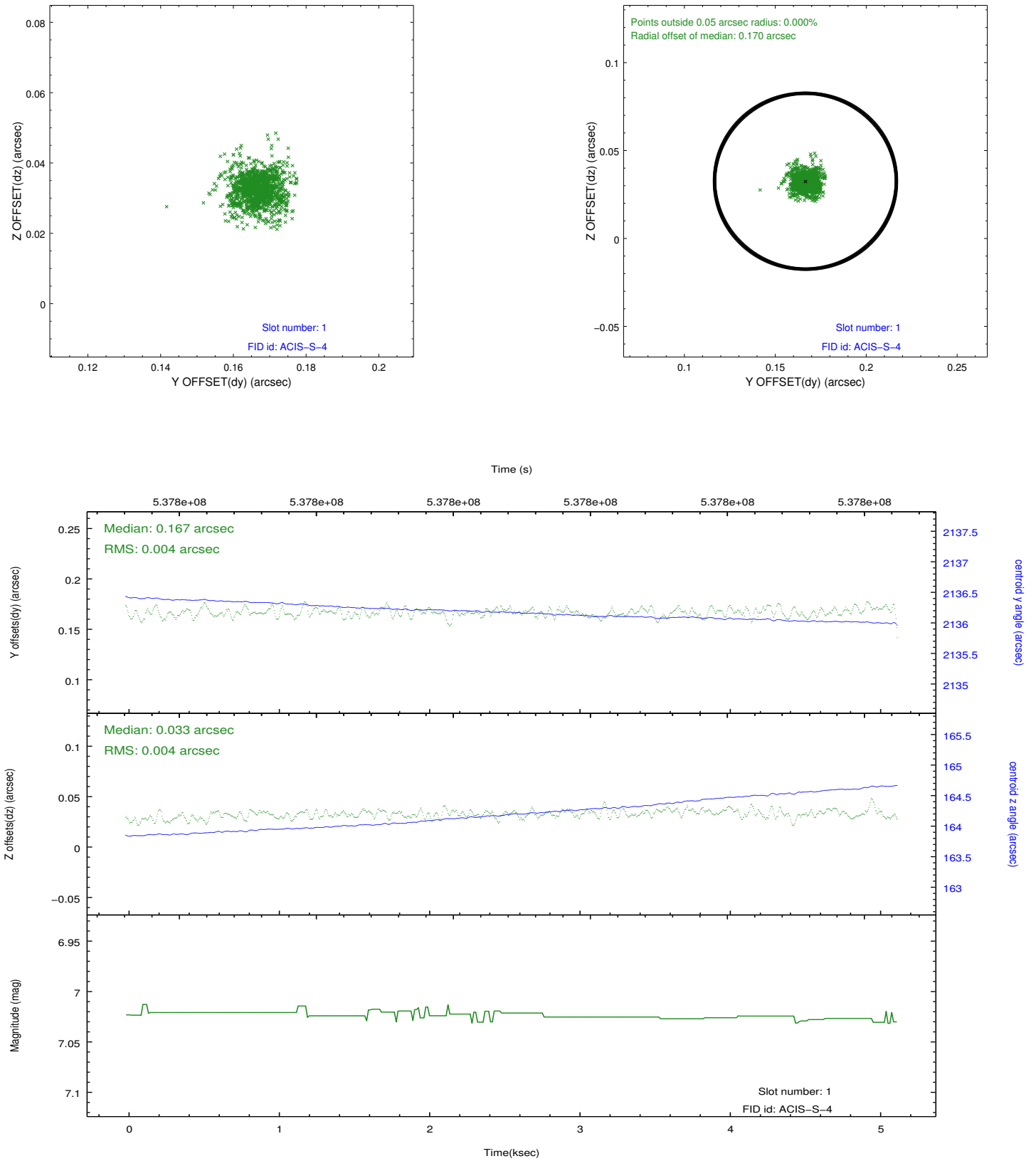


2.5 FID Slots

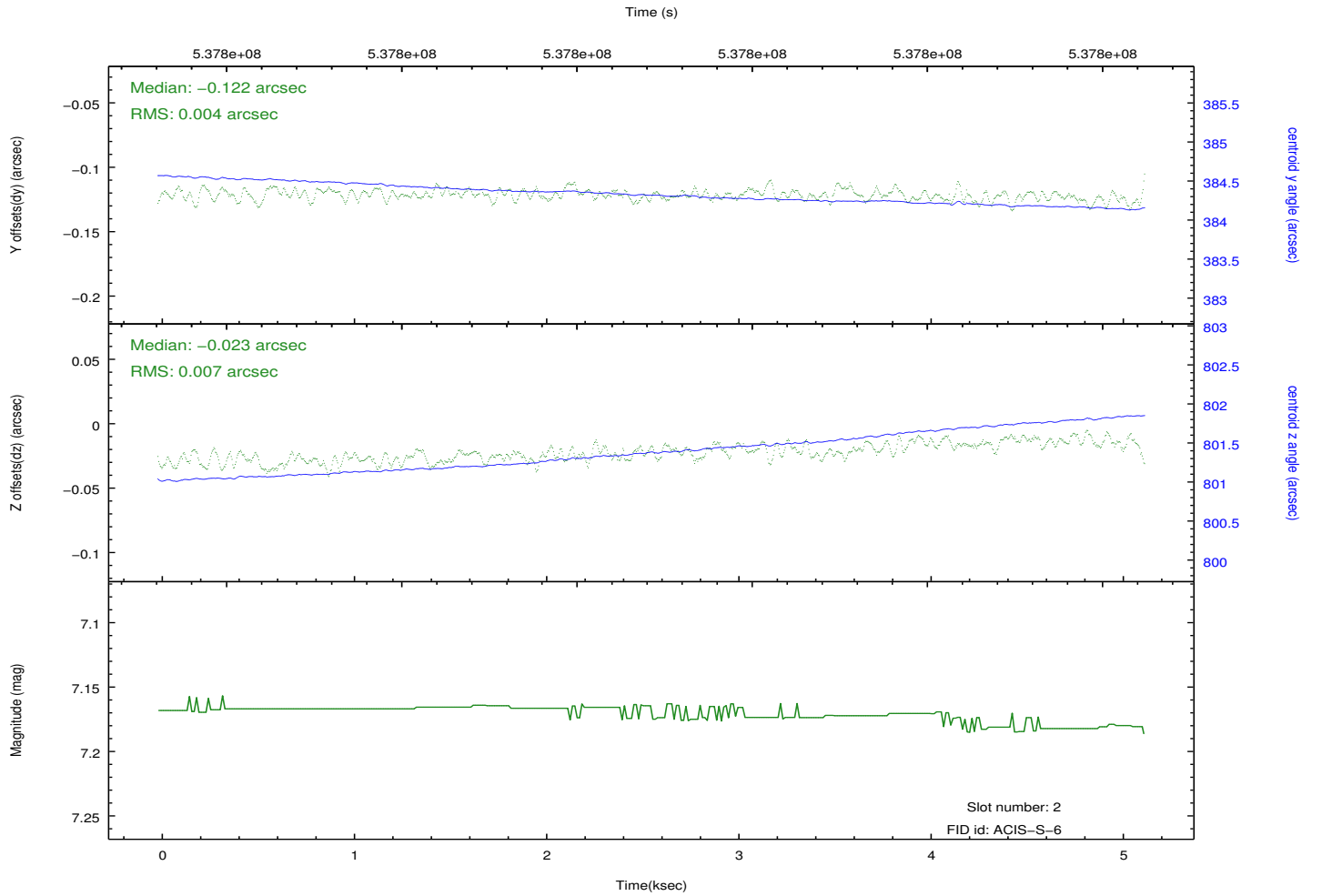
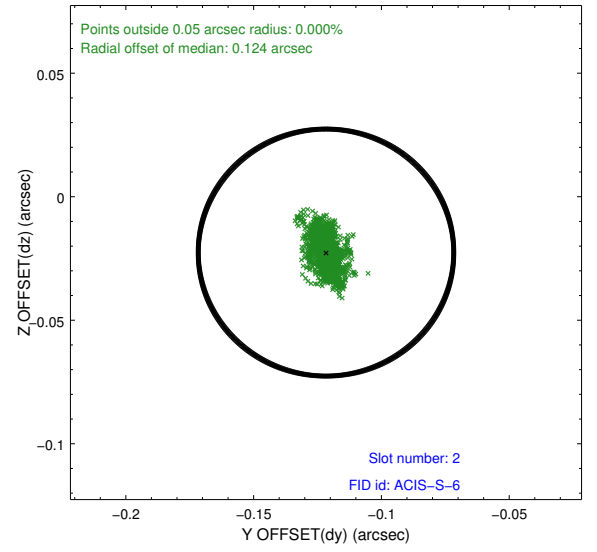
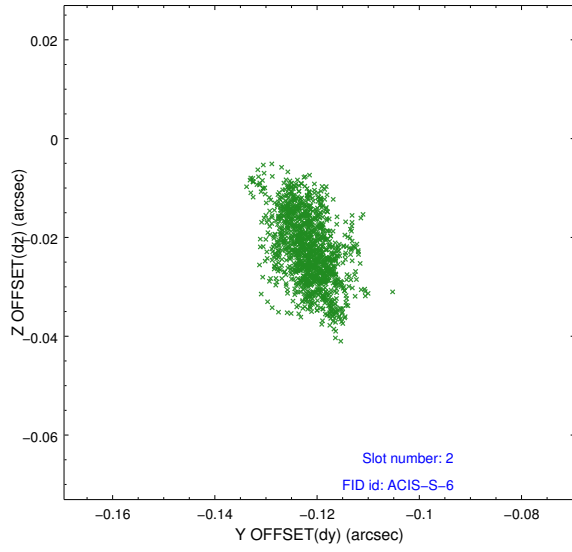
2.5.1 Slot 0



2.5.2 Slot 1



2.5.3 Slot 2



A Summary

A.1 Status

V&V Scientist	Jen Lauer
V&V Date (YYYY-MM-DD)	2015.01.19
V&V Edition	1
V&V Disposition and Status	OK
V&V Charge Time	5.062300039053

A.2 Comments