

V&V Reference Report

L2 ASCDS Version : 10.1.1

Observation 15719 - L2 Version 2
Chandra X-Ray Center

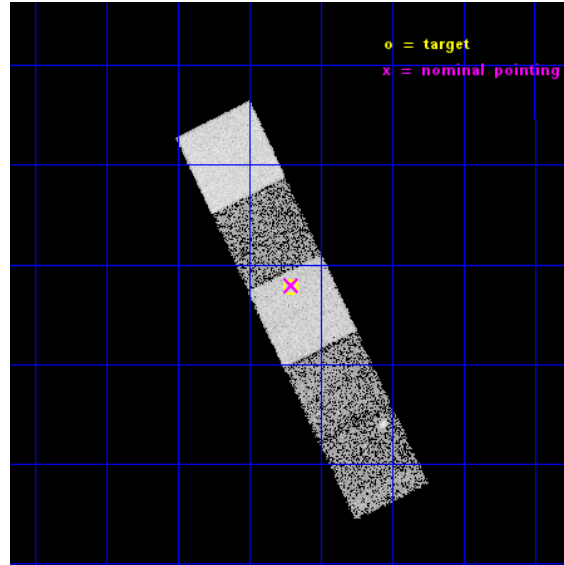
L2 Processing Date : Dec 8 2014

Contents

1	Front	2
2	OBI	3
2.1	OBI	3
2.1.1	Images	3
2.1.2	Bias	3
2.1.3	Parameters	4
2.1.4	Events	4
2.2	Compared Parameters	5
2.3	Aspect	6
2.4	Star Slots	9
2.4.1	Slot 3	9
2.4.2	Slot 4	10
2.4.3	Slot 5	11
2.4.4	Slot 6	12
2.4.5	Slot 7	13
2.5	FID Slots	14
2.5.1	Slot 0	14
2.5.2	Slot 1	15
2.5.3	Slot 2	16
A	Summary	17
A.1	Status	17
A.2	Comments	17

1 Front

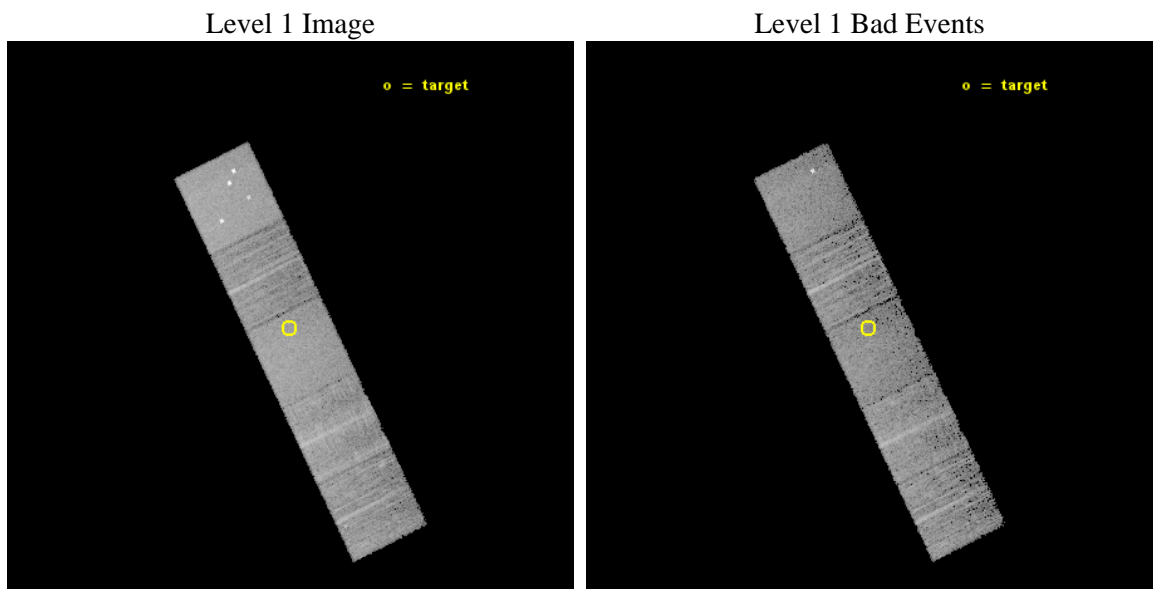
seq_num	200932	Sequence number
obs_id	15719	Observation id
title	Do exoplanets spin up their host stars?	Proposal title
observer	Dr. Katja Poppenhaeager	Principal investigator
object	HD 46375	Source name
dtcycle	0	
cycle	P	events from which exps? Prim/Second/Both
ra_targ	98.302917	Observer's specified target RA [deg]
dec_targ	5.462583	Observer's specified target Dec [deg]
ra_nom	98.301364812855	Nominal RA [deg]
dec_nom	5.4652024498799	Nominal Dec [deg]
roll_nom	63.992467564507	Nominal Roll [deg]
revision	2	Processing version of data
ontime	10062.600077391	Sum of GTIs [s]
livetime	9931.1247994012	Livetime [s]
ontime5	10062.600077391	Sum of GTIs [s]
ontime6	10062.600077391	Sum of GTIs [s]
ontime7	10062.600077391	Sum of GTIs [s]
ontime8	10062.600077391	Sum of GTIs [s]
ontime9	10062.600077391	Sum of GTIs [s]
l2events	81942	Number of level 2 events



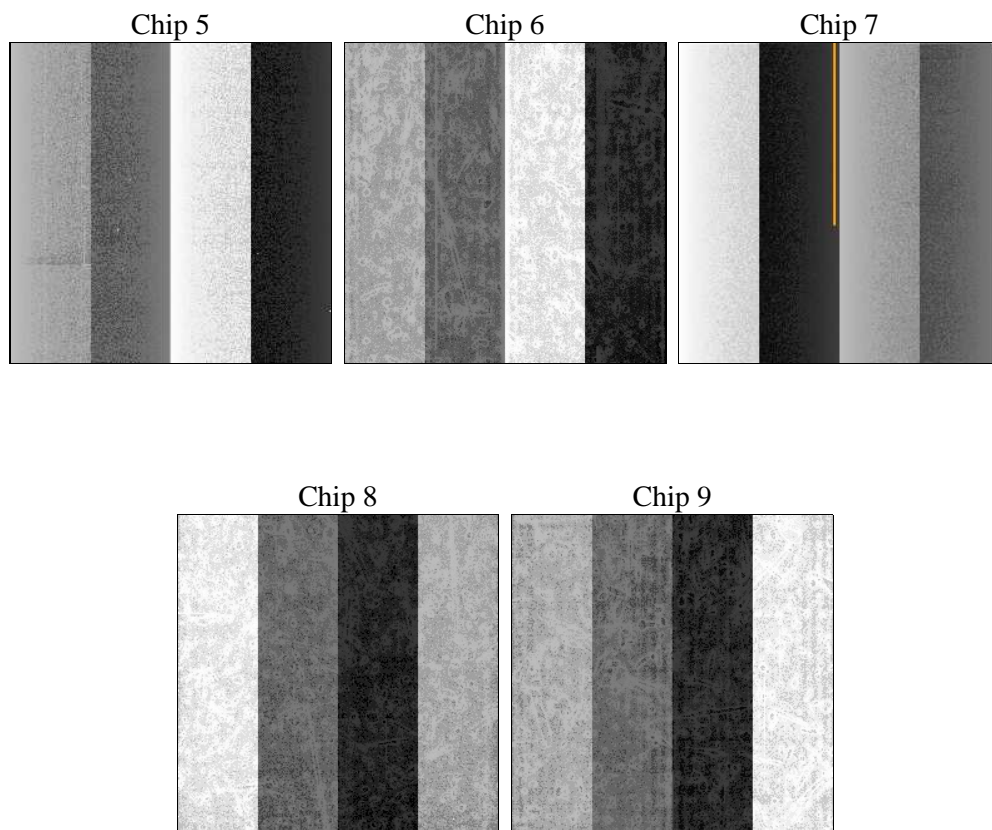
2 OBI

2.1 OBI

2.1.1 Images



2.1.2 Bias



2.1.3 Parameters

obi_num	0	Obi number	sched_exp_time	9999.737000	[s] Scheduled observation exposure time
ascdsver	10.3.1	Processing system revision	ontime	10062.600077391	Sum of GTIs [s]
caldsver	4.6.4	 	ontime5	10062.600077391	Sum of GTIs [s]
date	2014-12-08T06:11:20	Date and time of file creation	ontime6	10062.600077391	Sum of GTIs [s]
revision	2	Processing version of data	ontime7	10062.600077391	Sum of GTIs [s]
			ontime8	10062.600077391	Sum of GTIs [s]
			ontime9	10062.600077391	Sum of GTIs [s]
			l1events	321150	Number of level 1 events

2.1.4 Events

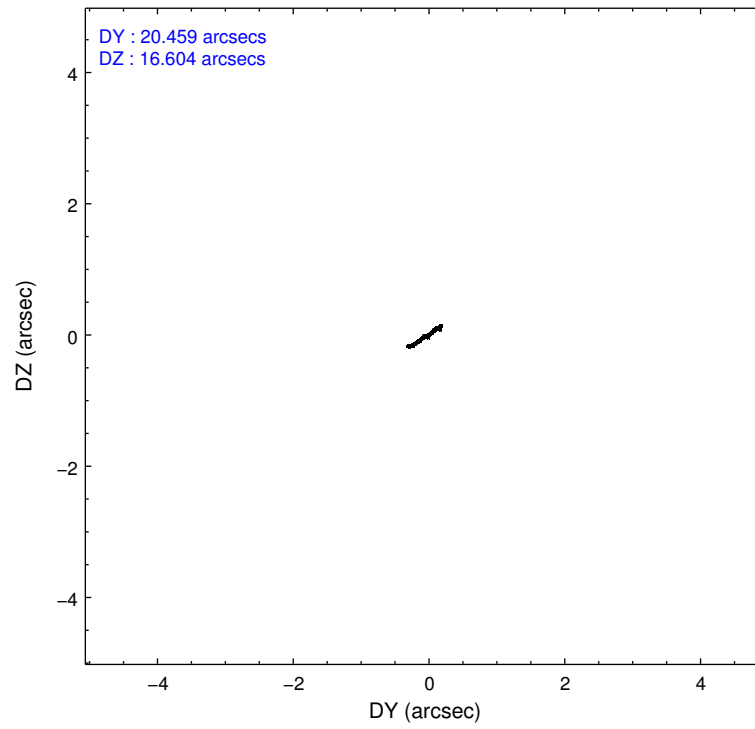
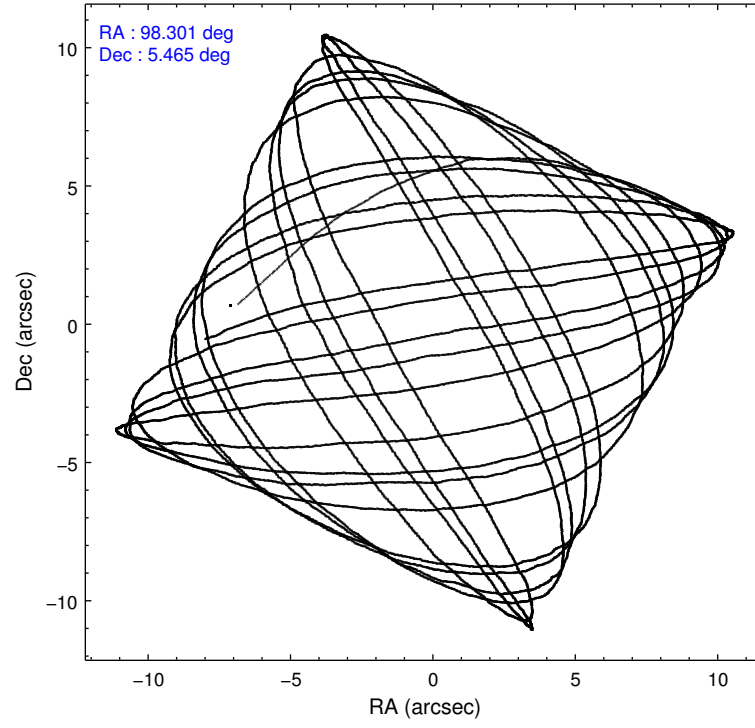
	ccd 5	ccd 6	ccd 7	ccd 8	ccd 9
level 1 events	87601	49261	67283	66584	50421
rejected events	43425	43296	38393	49246	43610
rejected %	49%	87%	57%	73%	86%

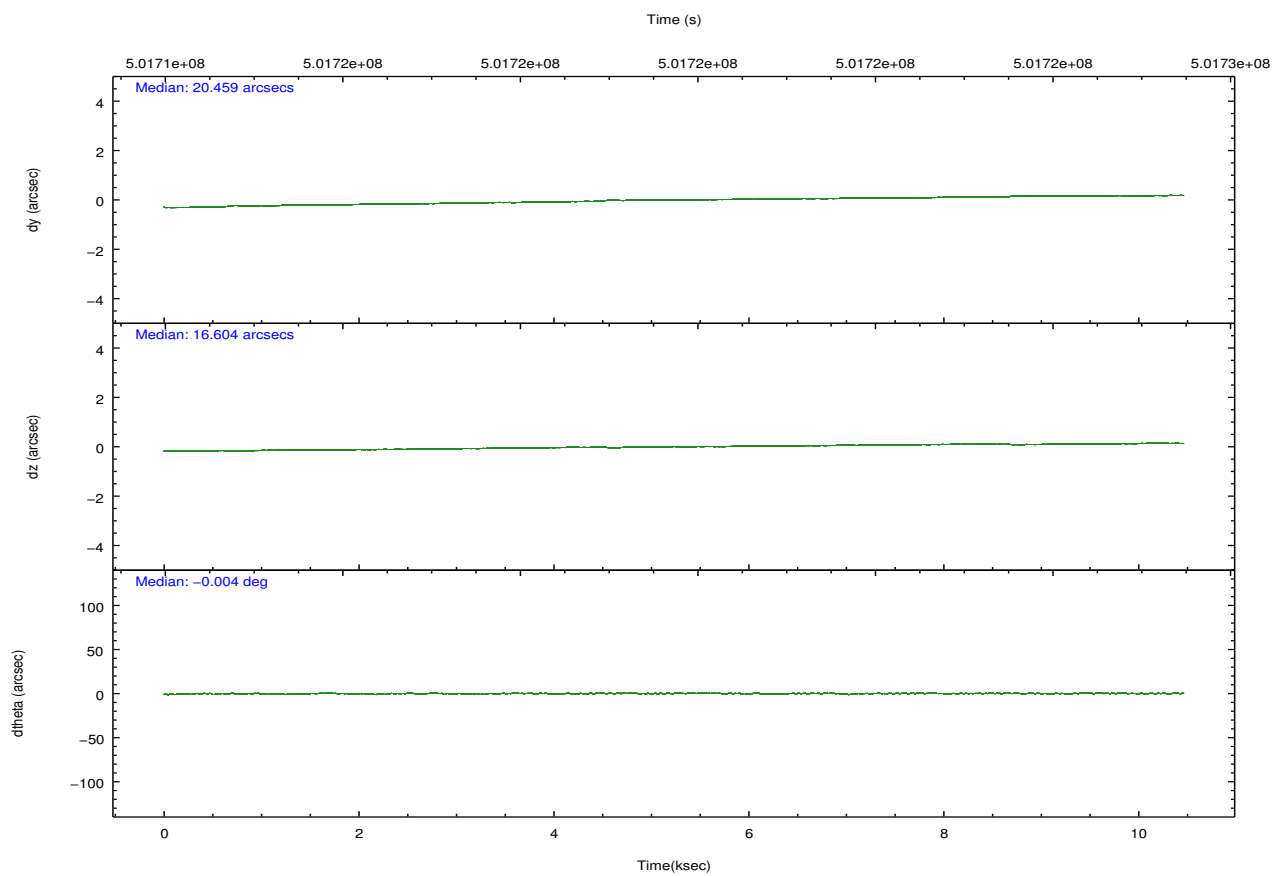
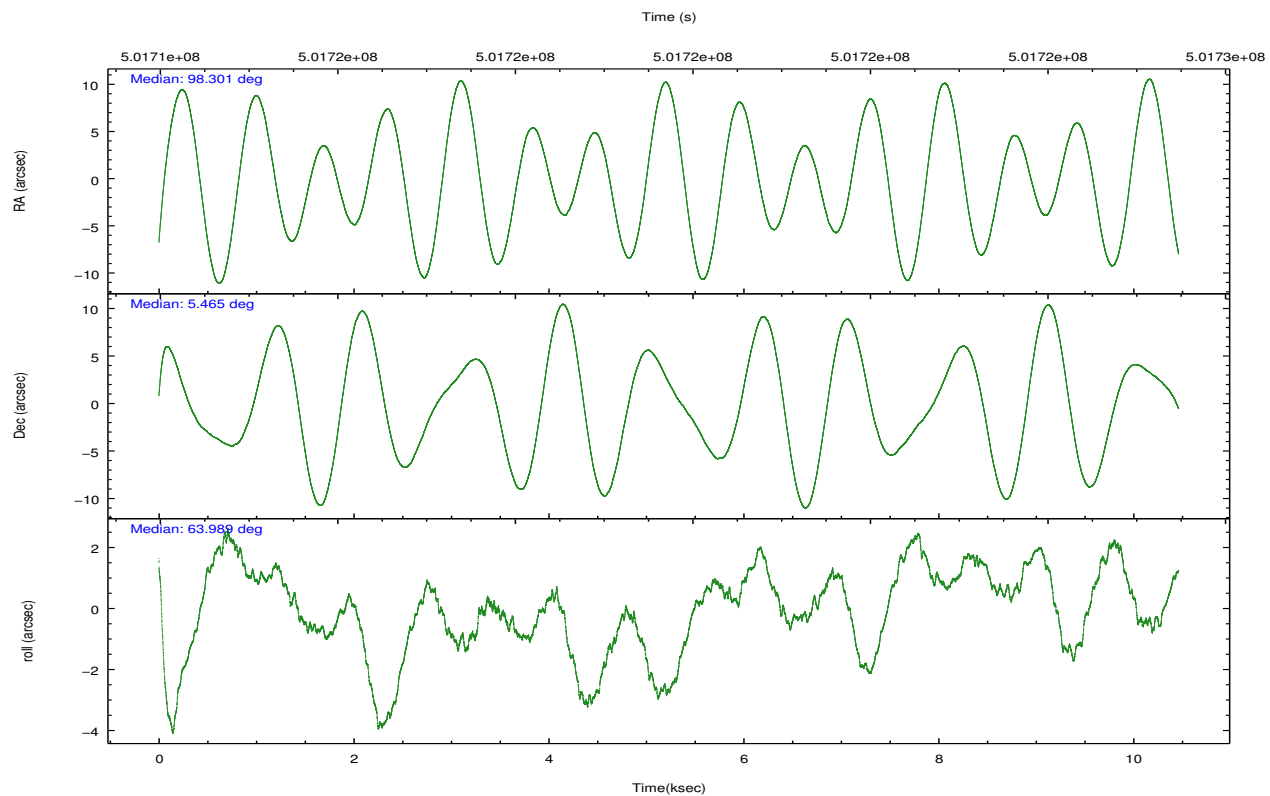
	ccd 5	ccd 6	ccd 7	ccd 8	ccd 9
grade 0 events	8066	2001	2537	4720	2695
	9%	4%	3%	7%	5%
grade 1 events	129	24	91	46	45
	0%	0%	0%	0%	0%
grade 2 events	12412	1347	5933	4234	1432
	14%	2%	8%	6%	2%
grade 3 events	1393	632	2528	1863	673
	1%	1%	3%	2%	1%
grade 4 events	1241	599	2480	1632	631
	1%	1%	3%	2%	1%
grade 5 events	6259	2679	6831	3720	2880
	7%	5%	10%	5%	5%
grade 6 events	21079	1388	15422	4900	1382
	24%	2%	22%	7%	2%
grade 7 events	37022	40591	31461	45469	40683
	42%	82%	46%	68%	80%

2.2 Compared Parameters

Parameter	Planned	Actual	Parameter	Planned	Actual
Instrument	ACIS	ACIS	Obspar format version number	7	7
Detector	ACIS-56789	ACIS-56789	Obspar file type	PREDICTED	ACTUAL
Grating	NONE	NONE	Obspar update status	NONE	UPDATED
Data mode	VFAINT	VFAINT	CCD I0 on	N	N
Observation mode	POINTING	POINTING	CCD I1 on	N	N
[deg] Pointing RA	98.303617	98.3013648128552	CCD I2 on	N	N
[deg] Pointing Dec	5.437919	5.465202449879929	CCD I3 on	N	N
[deg] Pointing Roll	63.835622	63.99246756450684	CCD S0 on	O1	N
[mm] SIM focus pos	-0.684267	-0.6828225247311905	CCD S1 on	O3	Y
[mm] SIM defocus	0	0.001444936568705701	CCD S2 on	O5	Y
[mm] SIM translation stage pos	-190.132523	-190.1425803651734	CCD S3 on	Y	Y
[mm] SIM translation stage offset	0	0.01005778216563158	CCD S4 on	O4	Y
[s] Observation start time (MET)	501714957.184000	501713876.043	CCD S5 on	O2	Y
Observation start date	2013-11-24T21:14:50	2013-11-24T20:57:56	Number of optional ACIS chips dropped	1	1
[s] Observation end time (MET)	501724956.184000	501725183.33112	On-chip summing requested	N	N
Observation end date	2013-11-25T00:01:29	2013-11-25T00:06:23	Subarray requested	NONE	NONE
Read mode	TIMED	TIMED	Alternating exposures requested	N	N
			[s] Primary exposure time	0.000000	3.1

2.3 Aspect



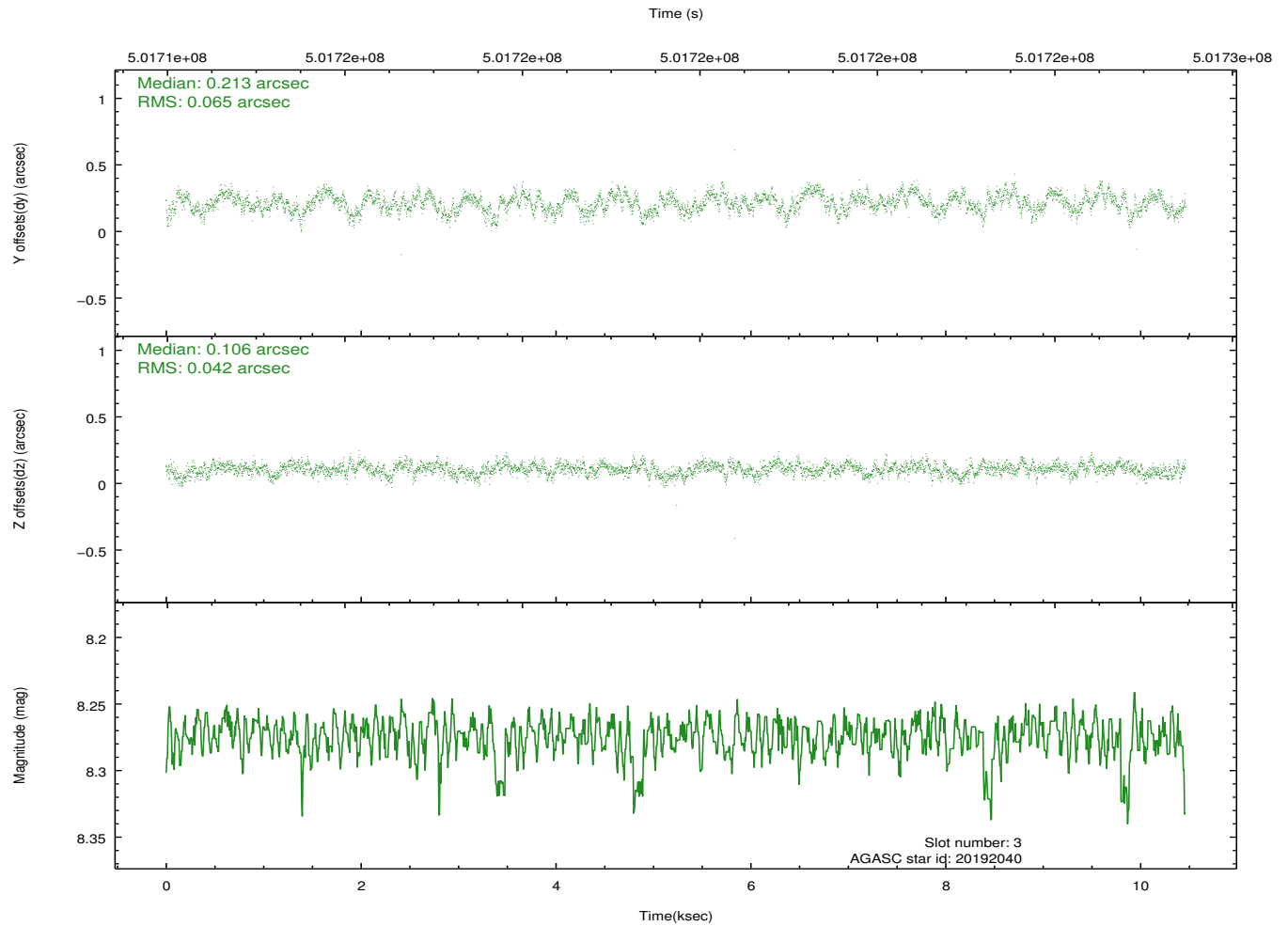
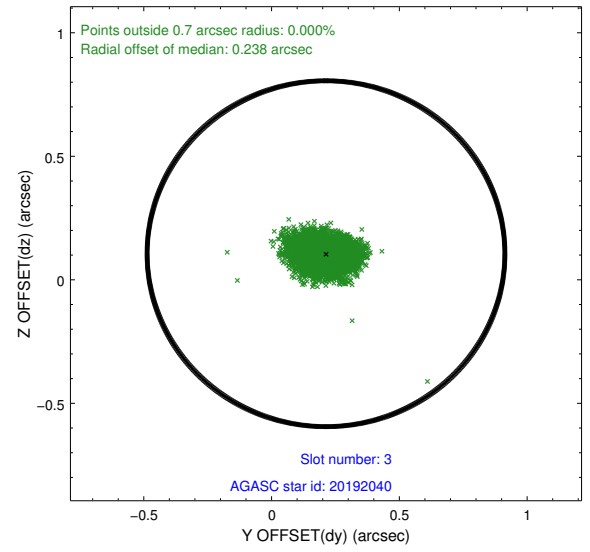
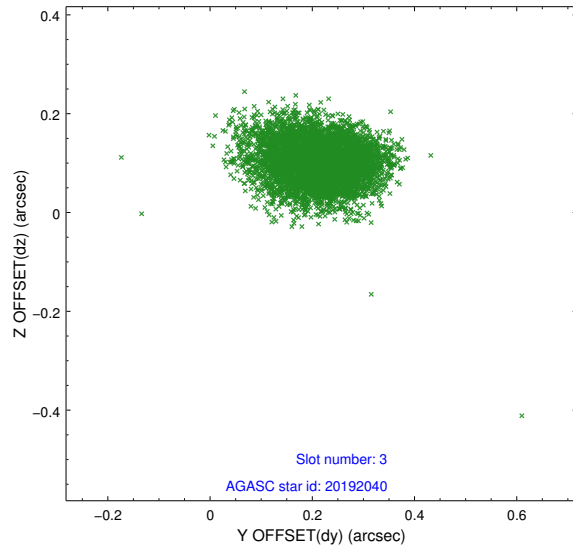


Slot Statistics

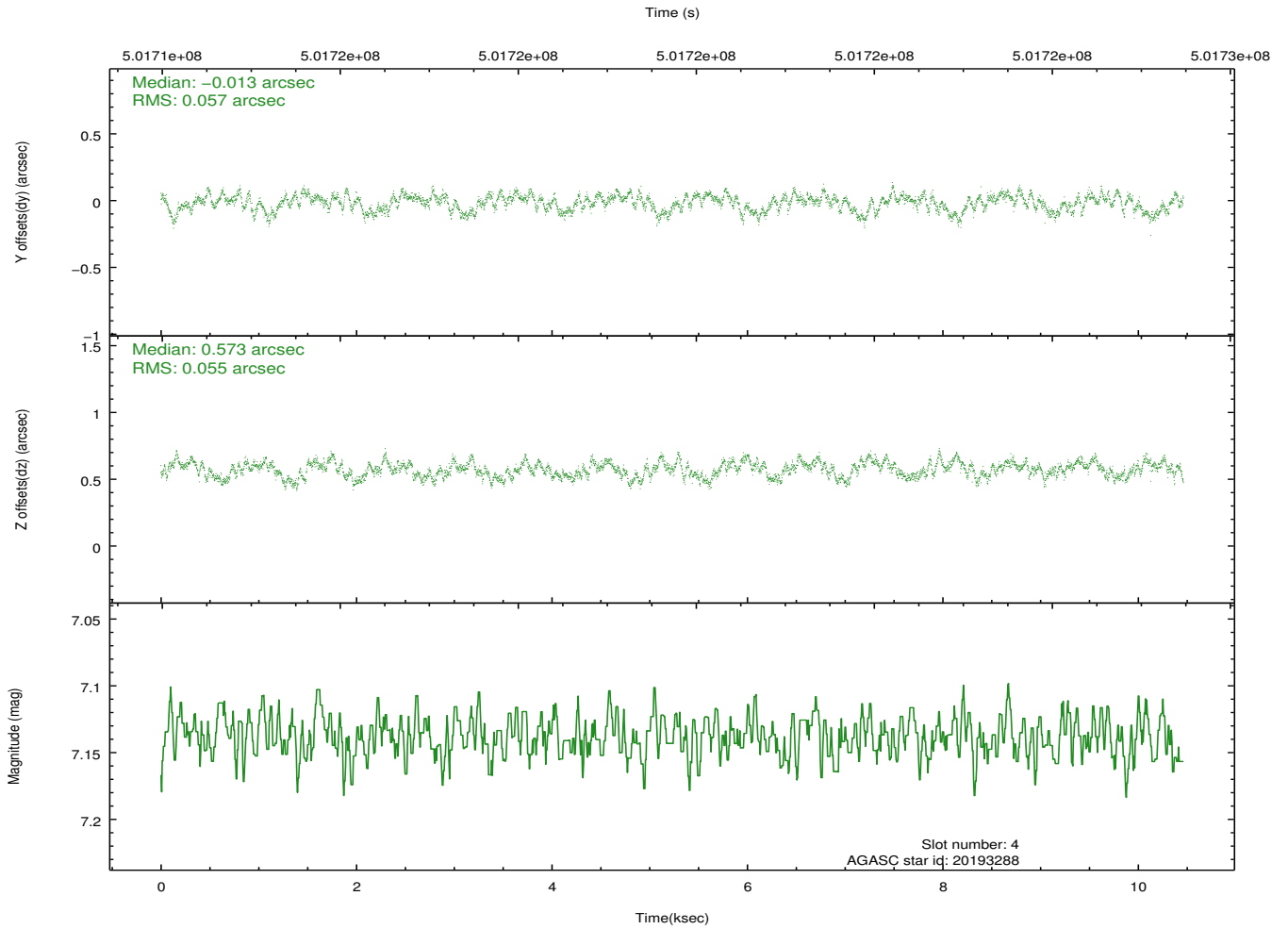
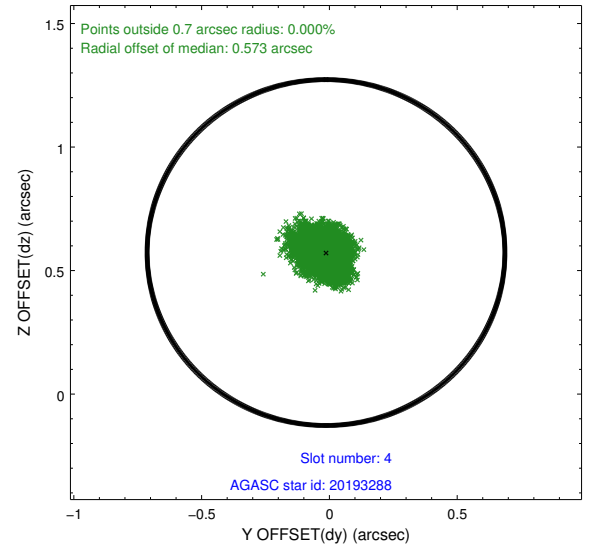
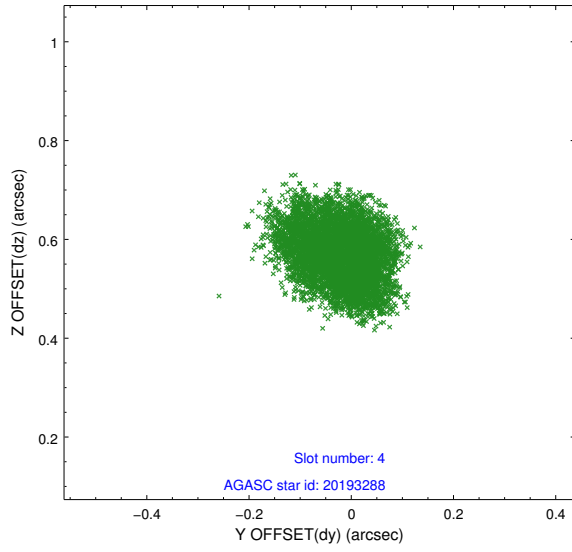
slot	status	used	id	mag	n_pts	med_dy	med_dz	dr1	dr2	ra	dec	mean_y	mean_z
0	FID		ACIS-S-2	7.00	2552	-0.122	-0.015	0.007	0.012	0.000000	0.000000	-773.68	-1737.97
1	FID		ACIS-S-4	7.09	2552	0.261	0.063	0.010	0.017	0.000000	0.000000	2139.76	170.05
2	FID		ACIS-S-5	7.12	2552	-0.170	-0.040	0.010	0.015	0.000000	0.000000	-1825.92	164.21
3	GUIDE	used	20192040	8.27	5101	0.213	0.106	0.081	0.134	97.909981	5.026773	-1950.25	614.66
4	GUIDE	used	20193288	7.14	5105	-0.013	0.573	0.086	0.131	98.869961	5.512572	1136.77	-1701.67
5	GUIDE	used	20204256	7.94	5103	0.093	0.135	0.081	0.133	97.968888	5.033108	-1836.62	434.76
6	GUIDE	used	20733648	7.98	5103	-0.008	-0.571	0.077	0.124	98.400457	5.661167	874.08	42.72
7	GUIDE	used	20721216	8.80	5102	-0.280	-0.241	0.097	0.156	97.796179	5.876936	616.09	2329.72

2.4 Star Slots

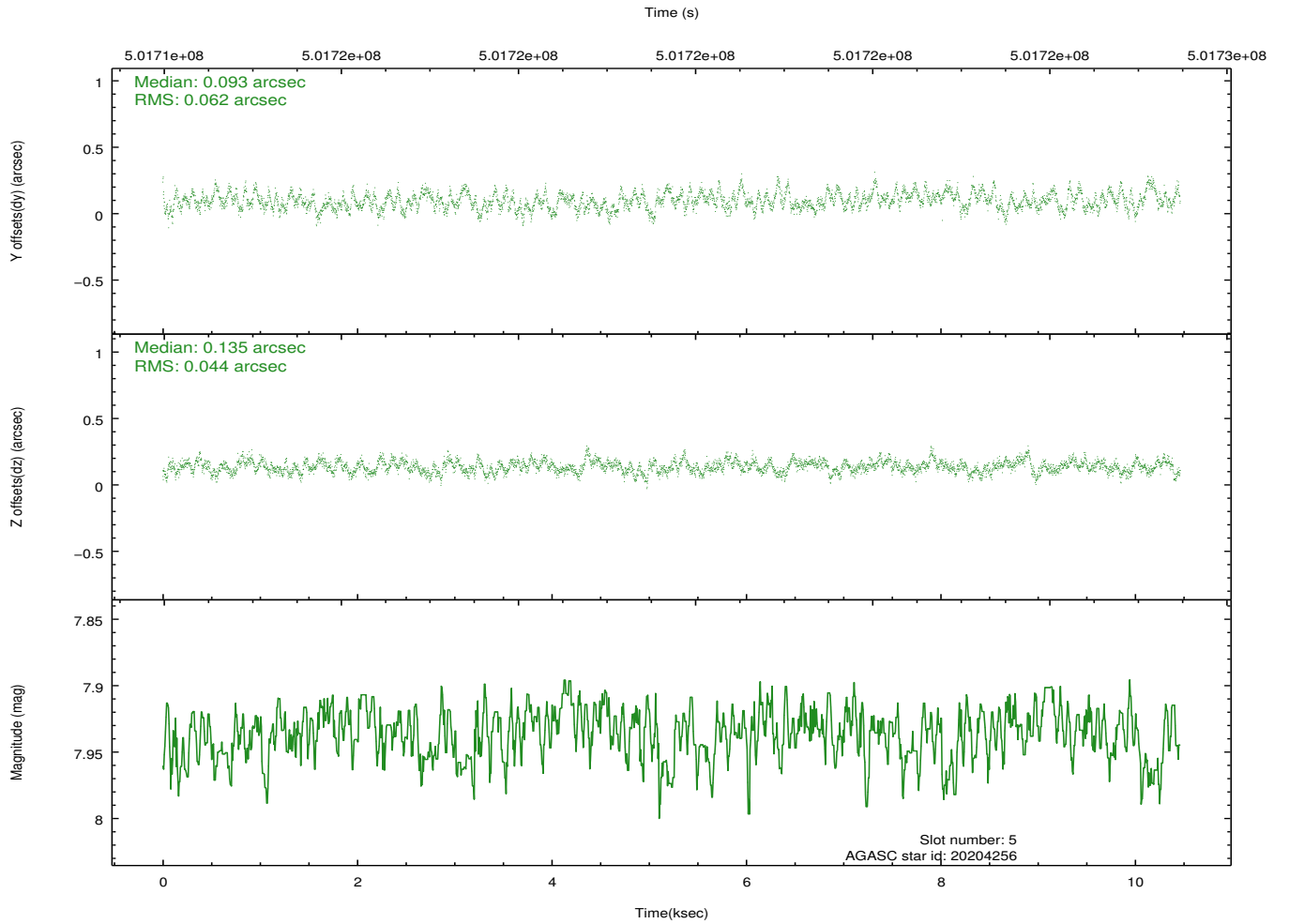
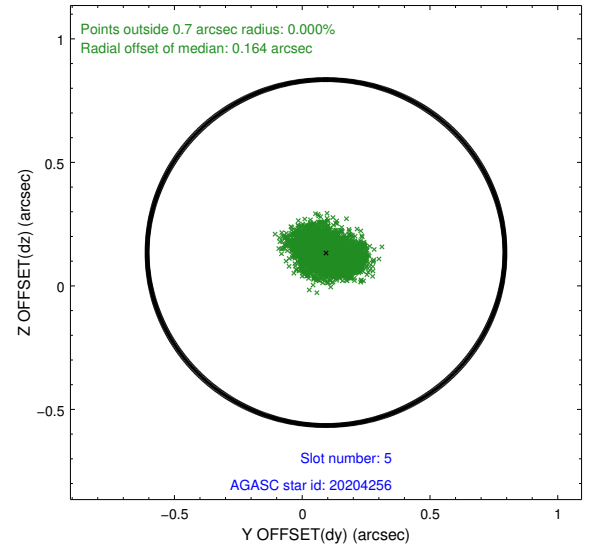
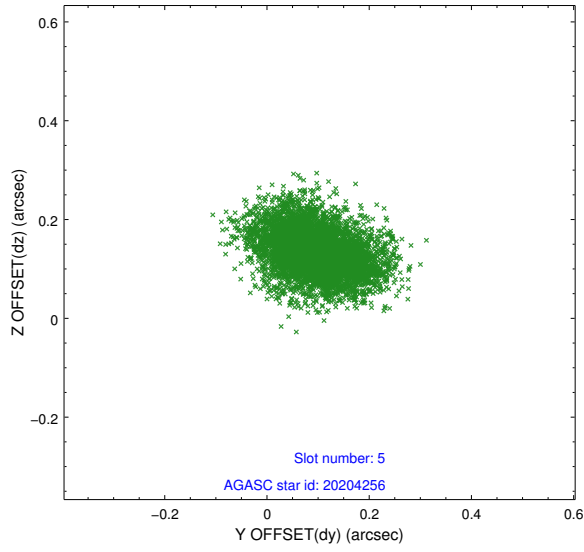
2.4.1 Slot 3



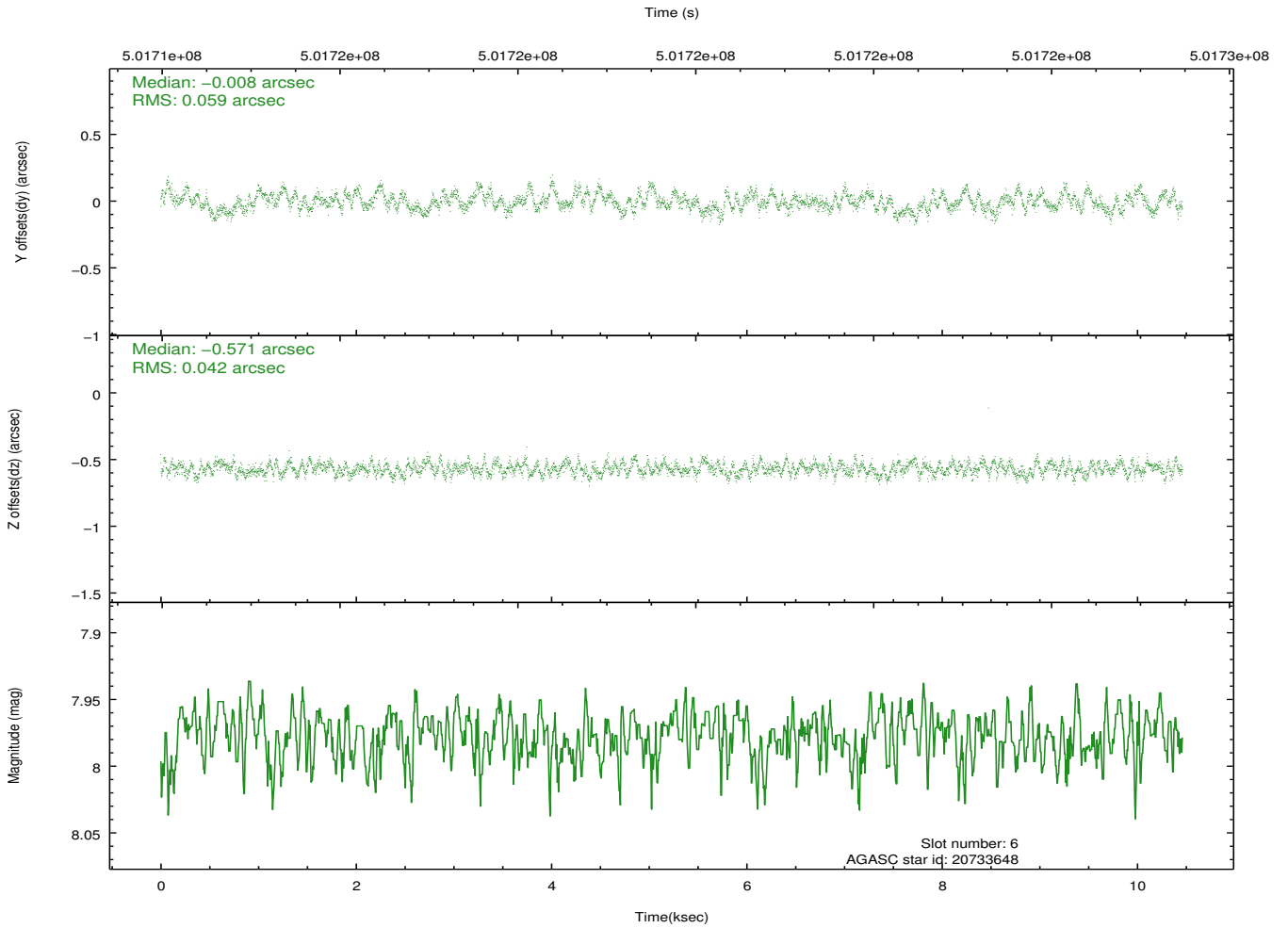
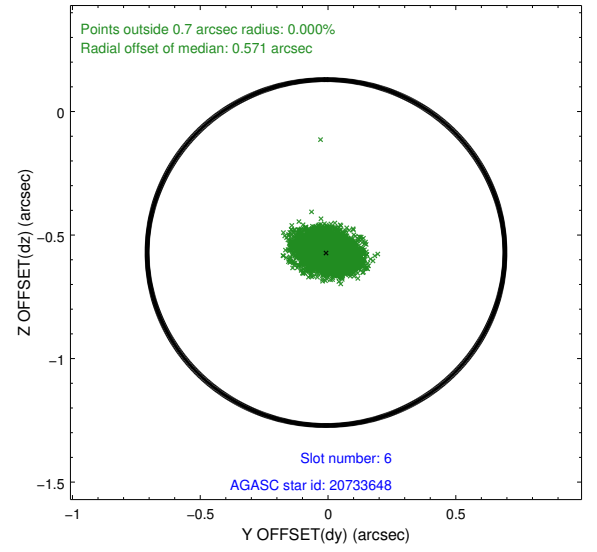
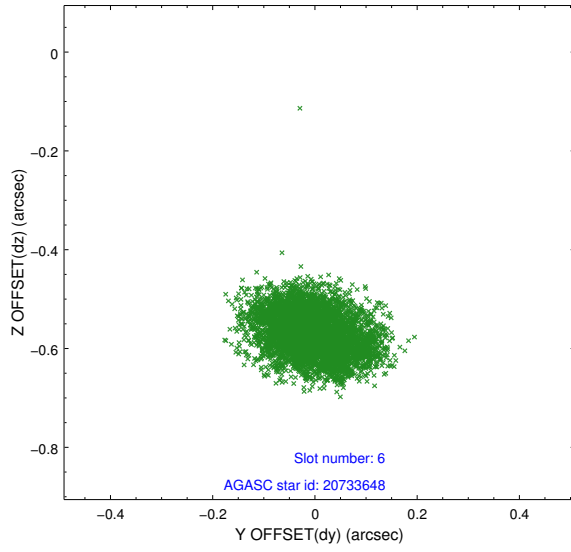
2.4.2 Slot 4



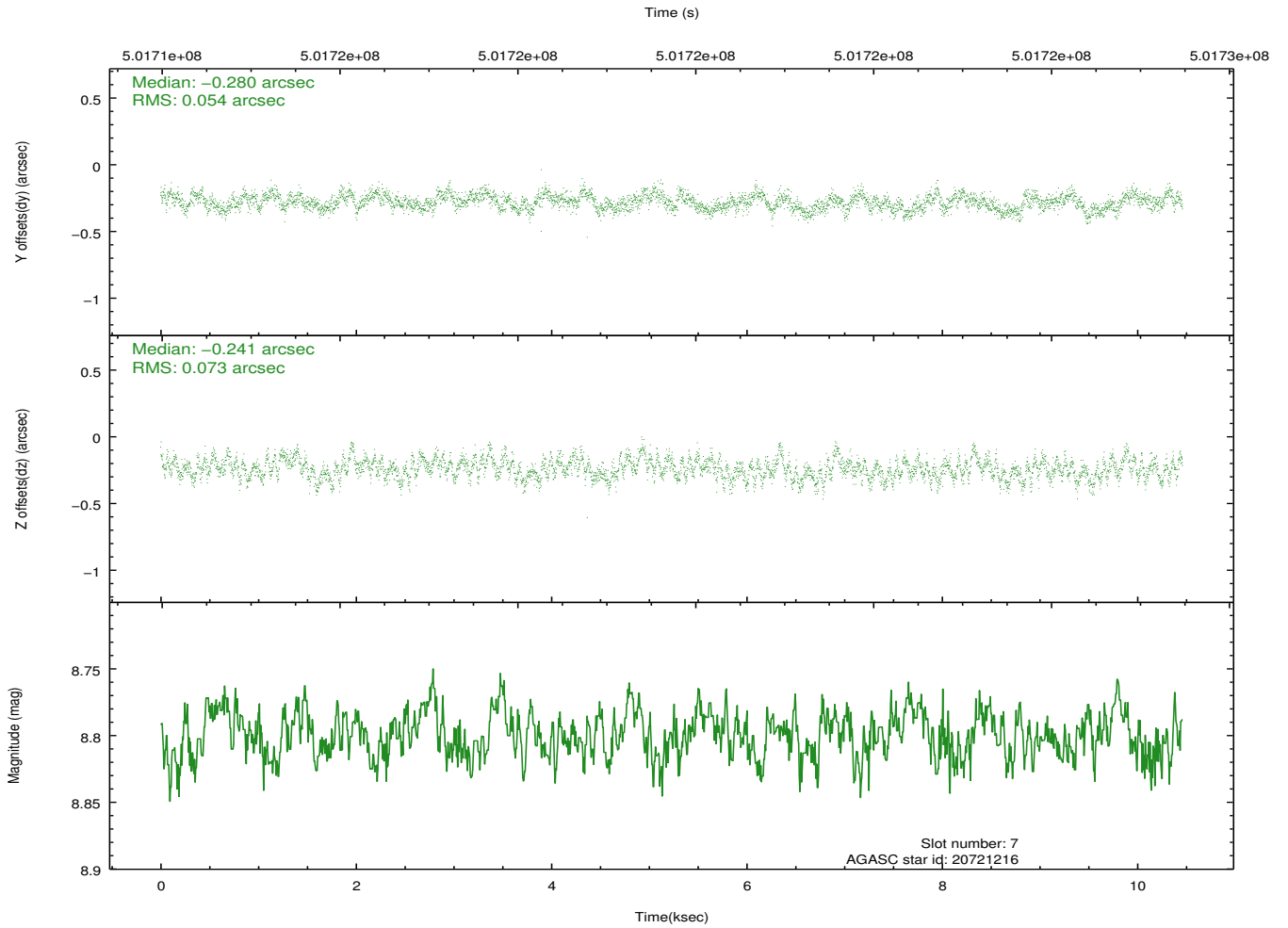
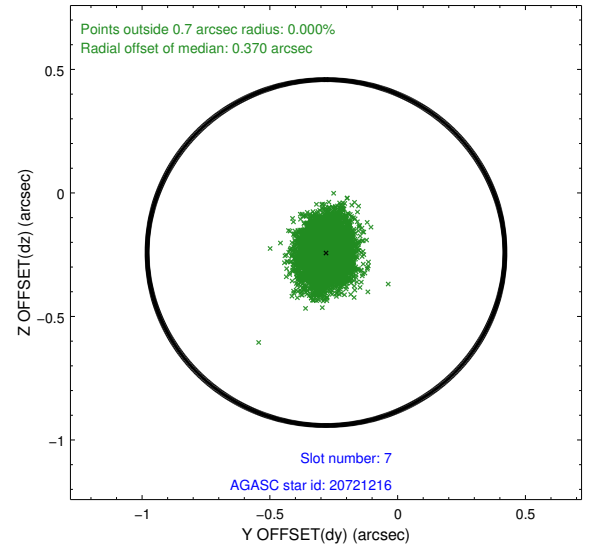
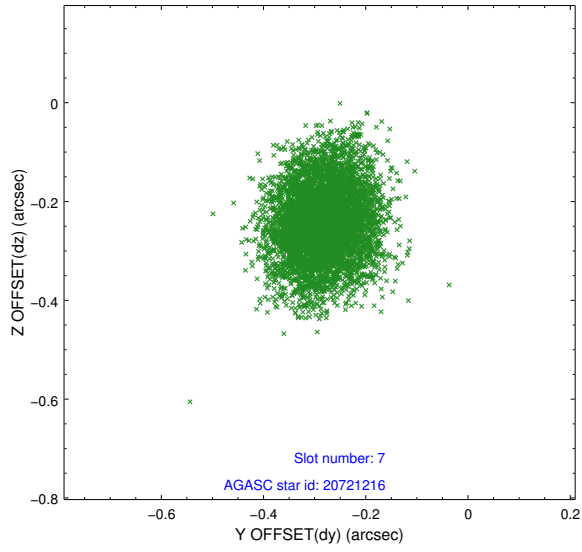
2.4.3 Slot 5



2.4.4 Slot 6

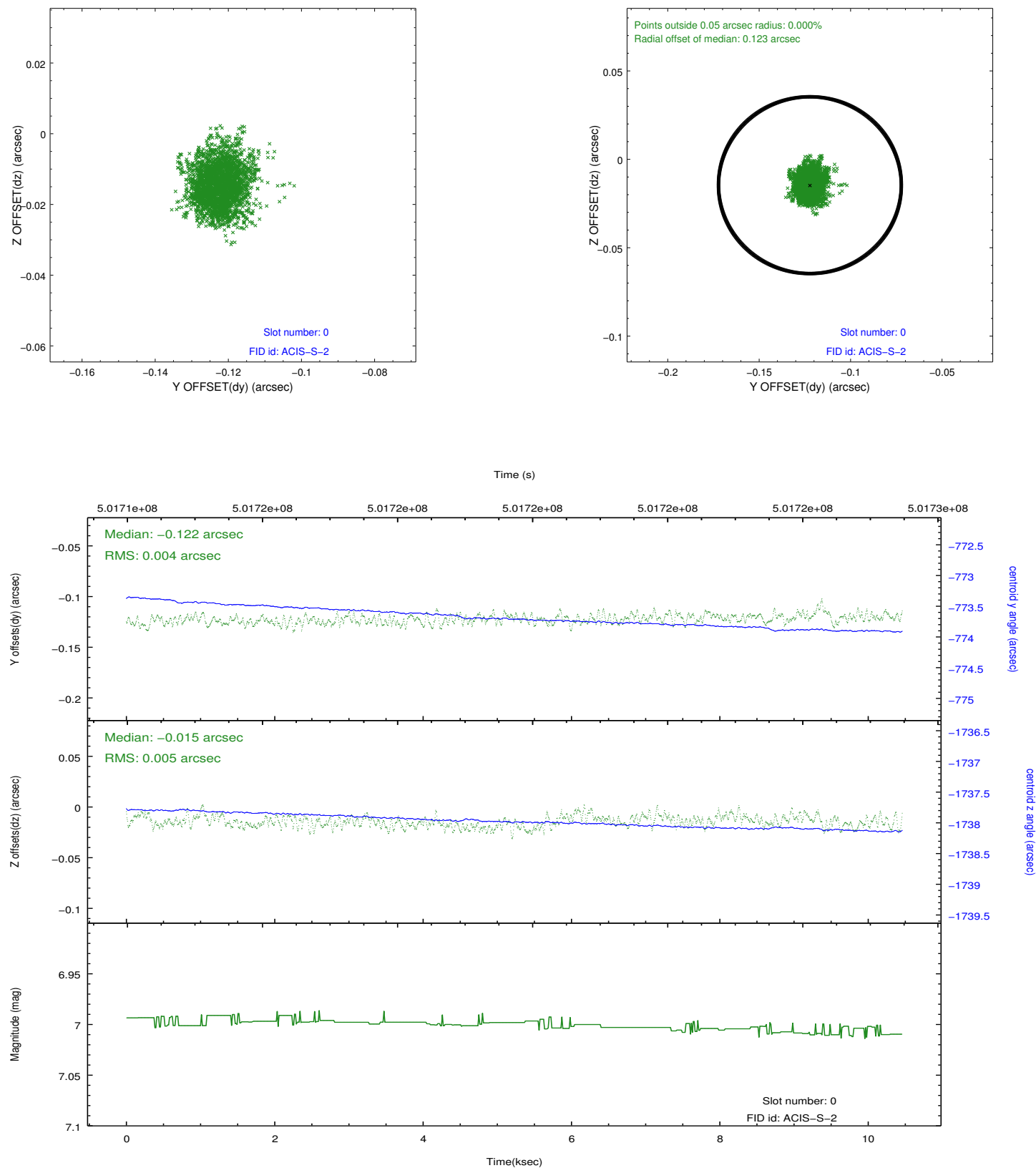


2.4.5 Slot 7

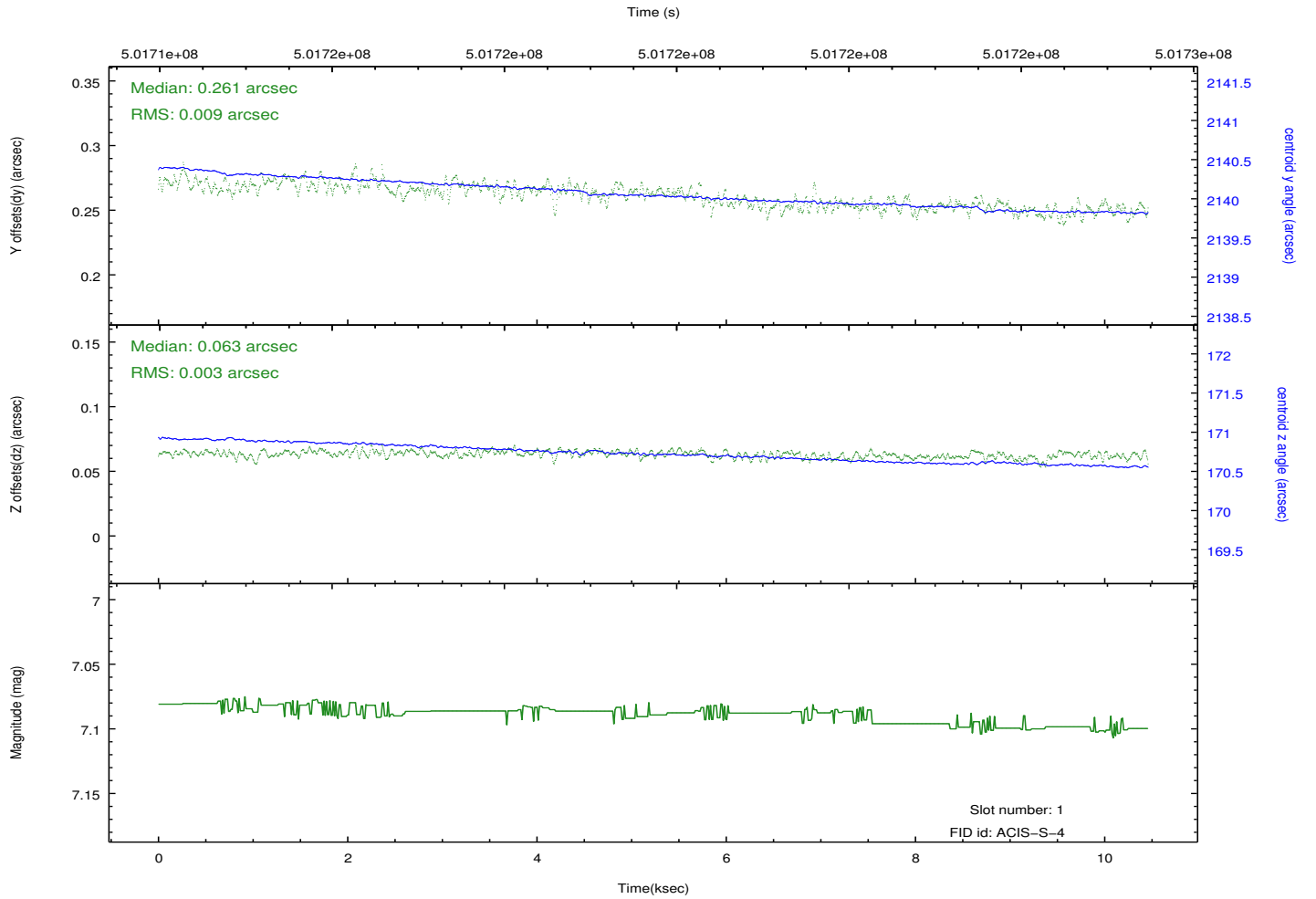
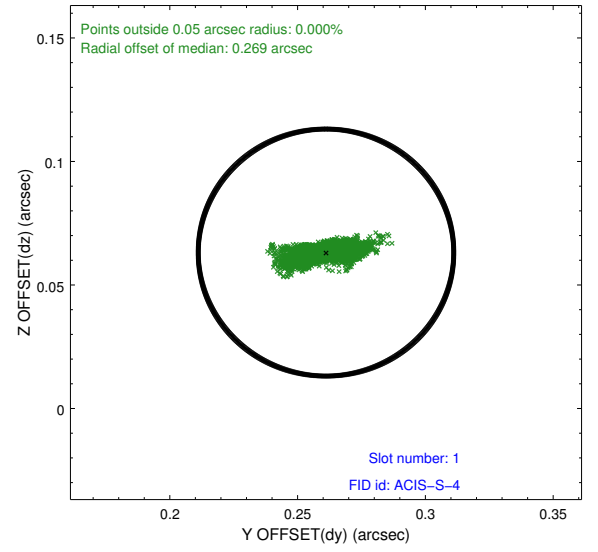
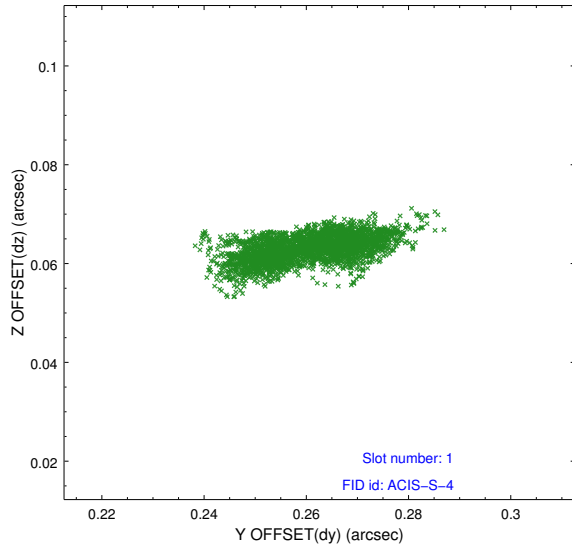


2.5 FID Slots

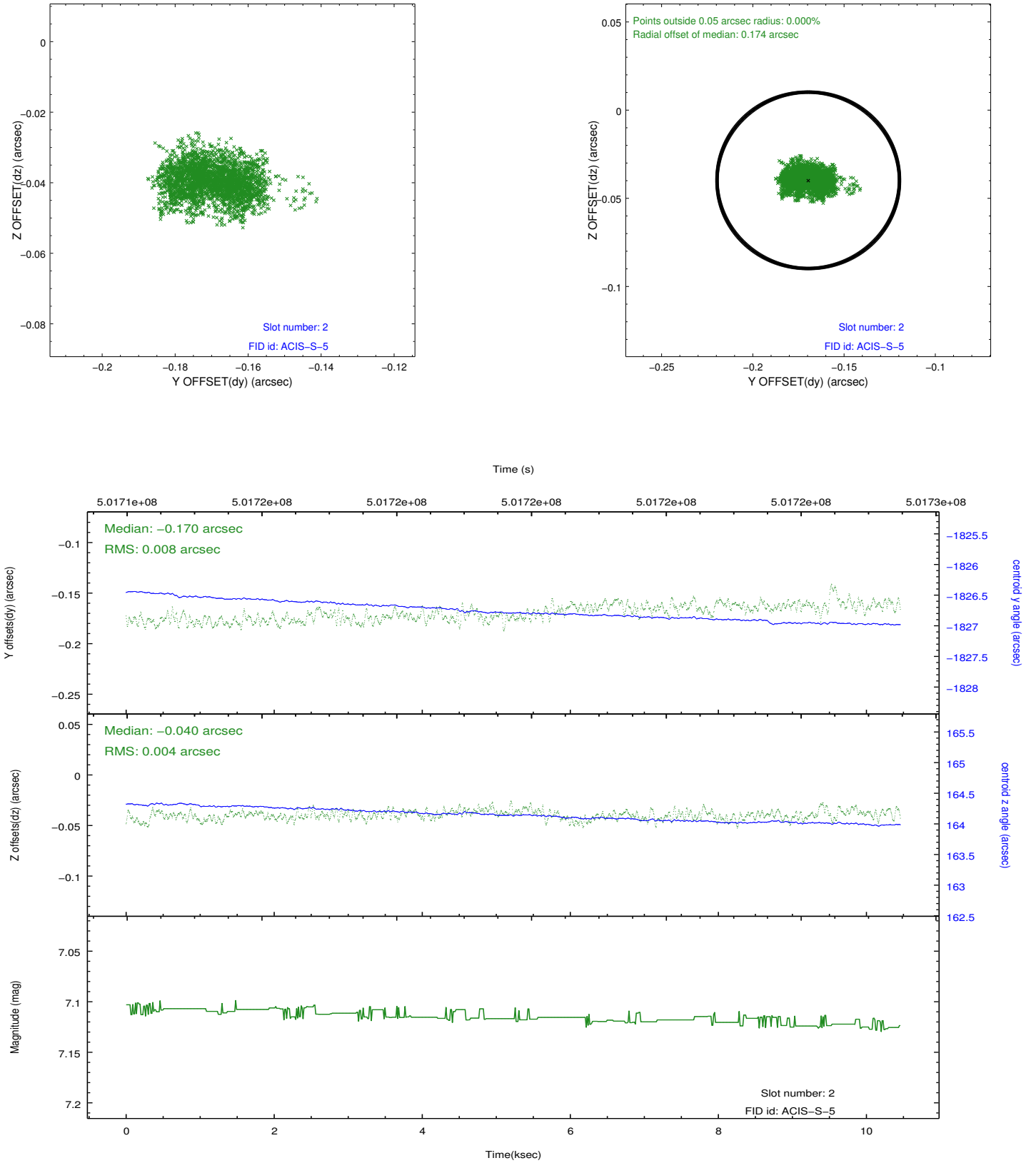
2.5.1 Slot 0



2.5.2 Slot 1



2.5.3 Slot 2



A Summary

A.1 Status

V&V Scientist	Beth Sundheim
V&V Date (YYYY-MM-DD)	2014.12.15
V&V Edition	1
V&V Disposition and Status	OK
V&V Charge Time	10.062600077391

A.2 Comments

Joint proposal with XMM.

These data have been reprocessed with new aspect alignment calibration files that correct small mean offsets (up to 0.4 arcsecs) and improve overall astrometric accuracy. The new calibration was determined using data from the time period being reprocessed and was performed using cross-correlation of X-ray sources with radio and optical counterparts.