

V&V Reference Report

L2 ASCDS Version : 8.4.3

Observation 12669 - L2 Version 2
Chandra X-Ray Center

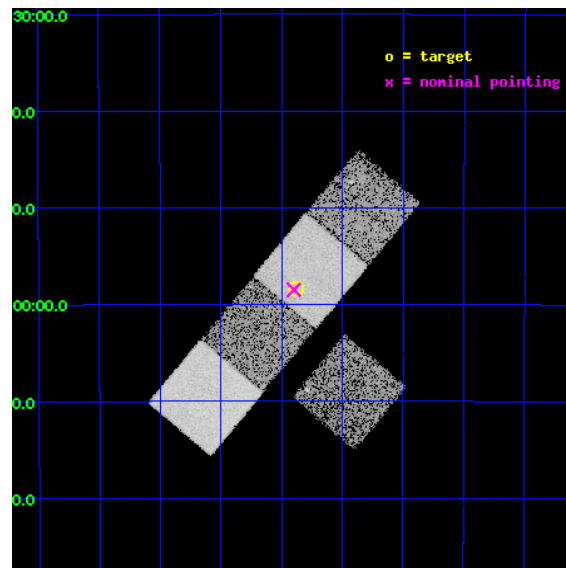
L2 Processing Date : Feb 20 2012

Contents

1	Front	2
2	OBI	3
2.1	OBI	3
2.1.1	Images	3
2.1.2	Bias	3
2.1.3	Parameters	4
2.1.4	Events	4
2.2	Compared Parameters	5
2.3	Aspect	6
2.4	Star Slots	9
2.4.1	Slot 3	9
2.4.2	Slot 4	10
2.4.3	Slot 5	11
2.4.4	Slot 6	12
2.4.5	Slot 7	13
2.5	FID Slots	14
2.5.1	Slot 0	14
2.5.2	Slot 1	15
2.5.3	Slot 2	16
A	Summary	17
A.1	Status	17
A.2	Comments	17

1 Front

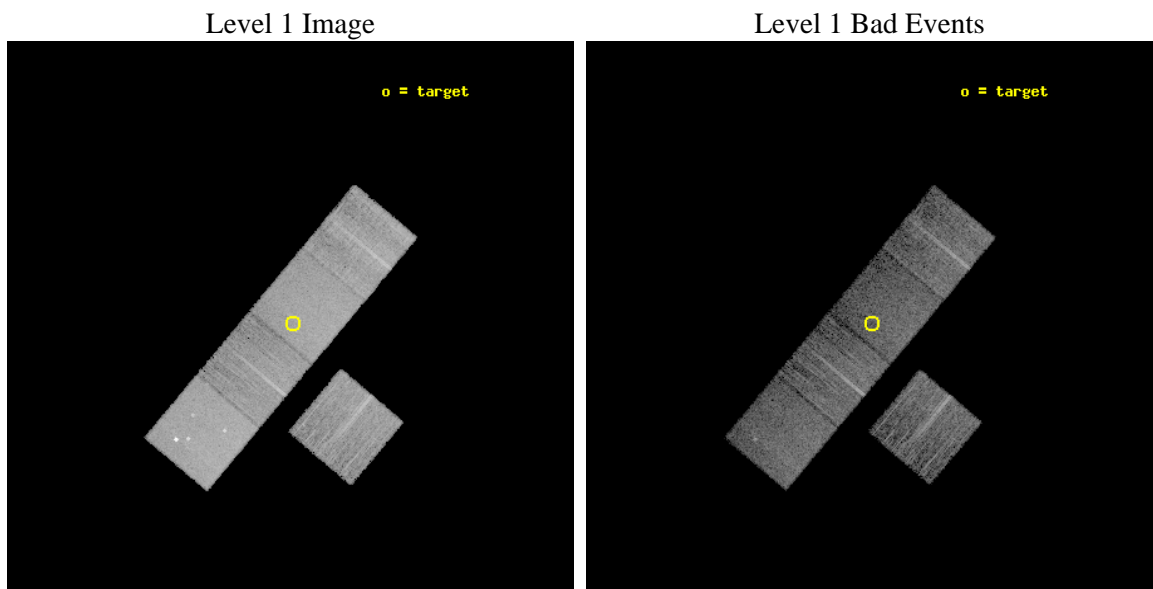
seq_num	501502	Sequence number
obs_id	12669	Observation id
title	The Energetics and Environments of Type Ibc Supernovae	Proposal ti
observer	Prof. Alicia Soderberg	Principal investigator
object	SN2011ei	Source name
dtcycle	0	
cycle	P	events from which exps? Prim/Second/Both
ra_targ	308.59425	Observer's specified target RA [deg]
dec_targ	-31.973222	Observer's specified target Dec [deg]
ra_nom	308.59973848005	Nominal RA [deg]
dec_nom	-31.974736893475	Nominal Dec [deg]
roll_nom	309.96068171712	Nominal Roll [deg]
revision	2	Processing version of data
ontime	10036.437769651	Sum of GTIs [s]
livetime	9905.3043214729	Livetime [s]
ontime2	10036.273609638	Sum of GTIs [s]
ontime5	10036.396729648	Sum of GTIs [s]
ontime6	10036.355689645	Sum of GTIs [s]
ontime7	10036.437769651	Sum of GTIs [s]
ontime8	10036.314649642	Sum of GTIs [s]
l2events	102097	Number of level 2 events



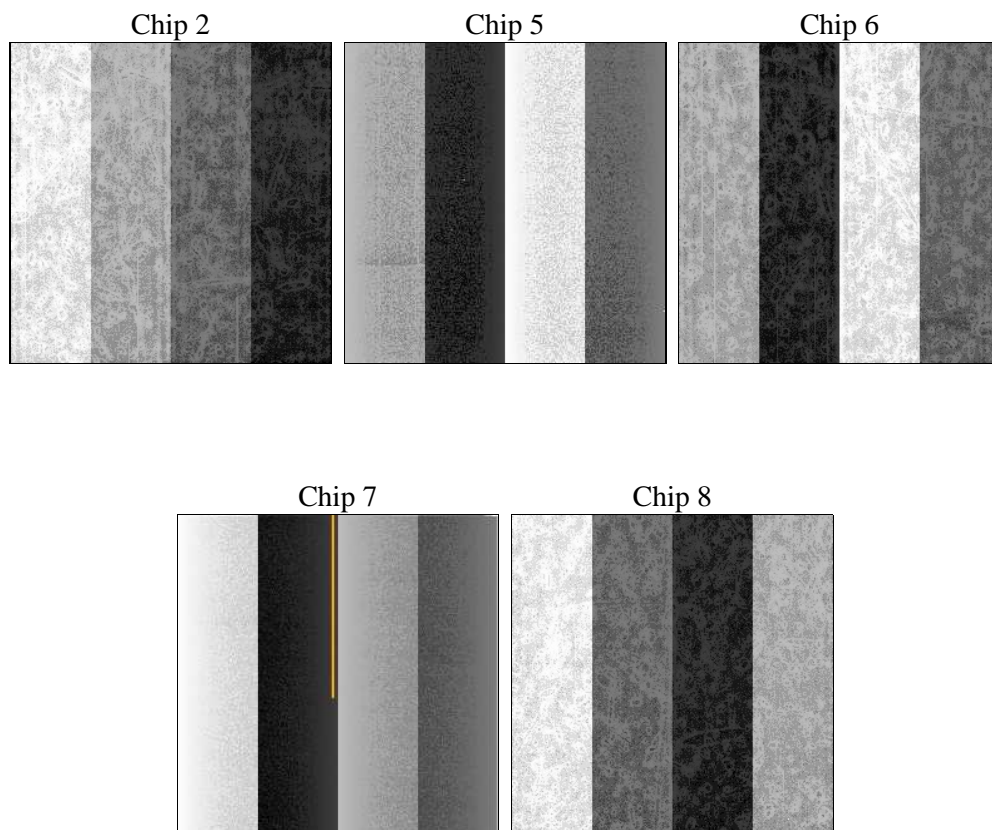
2 OBI

2.1 OBI

2.1.1 Images



2.1.2 Bias



2.1.3 Parameters

obi_num	0	Obi number	sched_exp_time	10000.000000	[s] Scheduled observation exposure time
ascdsver	8.4.3	Processing system revision	ontime	10036.437769651	Sum of GTIs [s]
caldbver	4.4.8	 	ontime2	10036.273609638	Sum of GTIs [s]
date	2012-02-20T22:44:52	Date and time of file creation	ontime5	10036.396729648	Sum of GTIs [s]
revision	2	Processing version of data	ontime6	10036.355689645	Sum of GTIs [s]
			ontime7	10036.437769651	Sum of GTIs [s]
			ontime8	10036.314649642	Sum of GTIs [s]
			l1events	394658	Number of level 1 events

2.1.4 Events

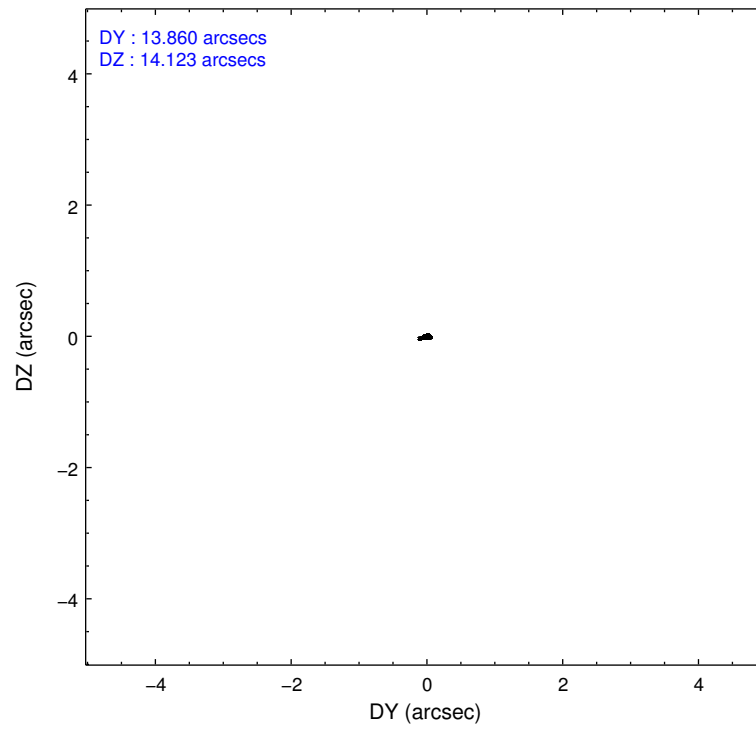
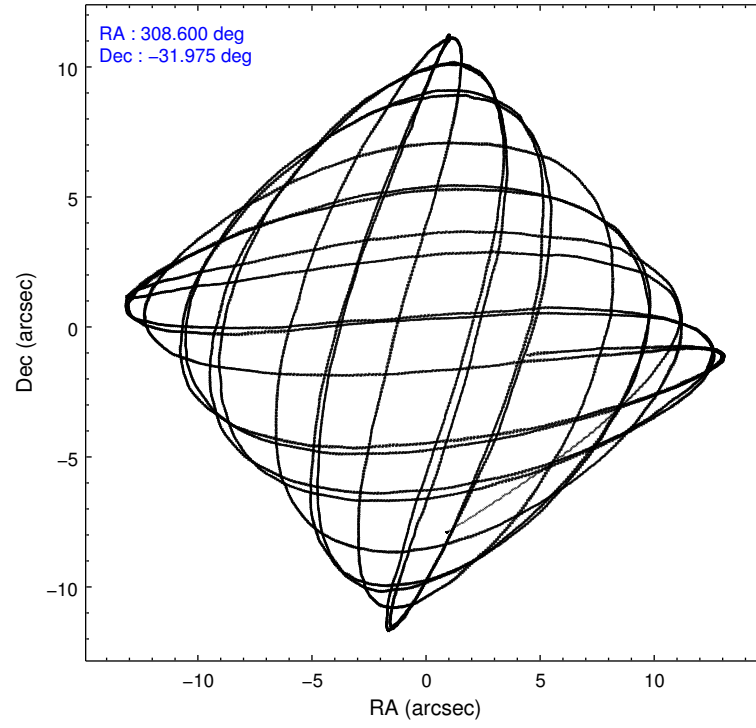
	ccd 2	ccd 5	ccd 6	ccd 7	ccd 8
level 1 events	63409	104370	62939	82812	81128
rejected events	56486	52063	55341	46111	59772
rejected %	89%	49%	87%	55%	73%

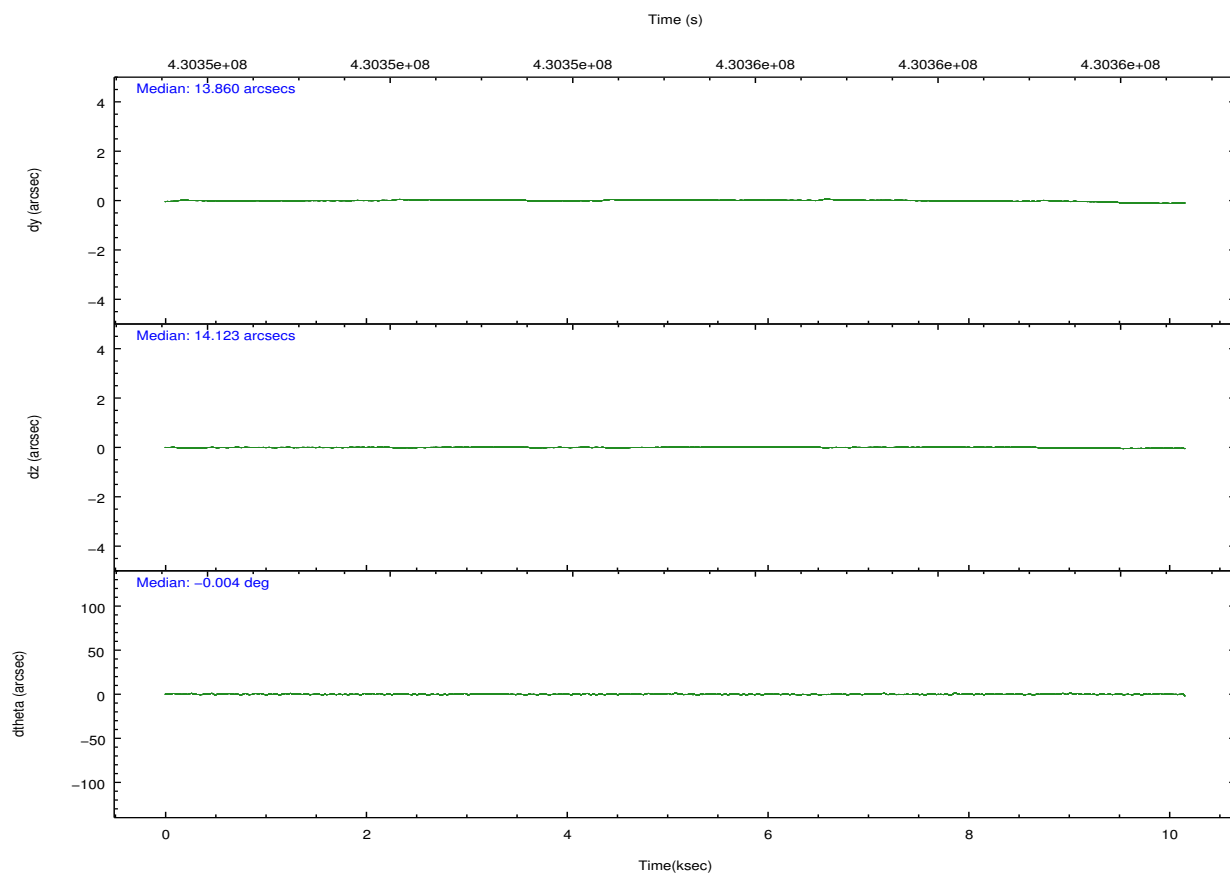
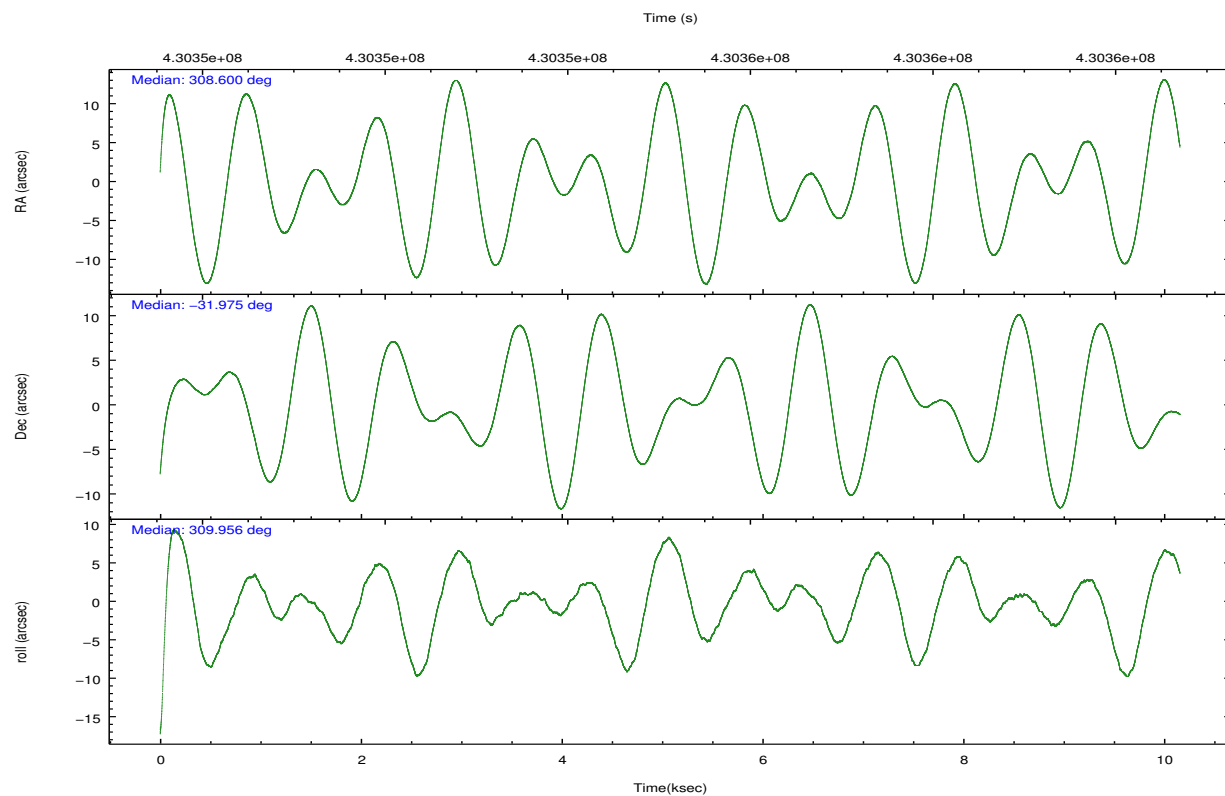
	ccd 2	ccd 5	ccd 6	ccd 7	ccd 8
grade 0 events	2501	5370	2672	3402	6107
	3%	5%	4%	4%	7%
grade 1 events	39	310	35	98	71
	0%	0%	0%	0%	0%
grade 2 events	1700	16930	1693	7395	5056
	2%	16%	2%	8%	6%
grade 3 events	734	1813	764	3168	2388
	1%	1%	1%	3%	2%
grade 4 events	710	1803	827	3201	2167
	1%	1%	1%	3%	2%
grade 5 events	2628	7574	3087	8584	4489
	4%	7%	4%	10%	5%
grade 6 events	1282	26418	1647	19564	5647
	2%	25%	2%	23%	6%
grade 7 events	53815	44152	52214	37400	55203
	84%	42%	82%	45%	68%

2.2 Compared Parameters

Parameter	Planned	Actual	Parameter	Planned	Actual
Instrument	ACIS	ACIS	Obspar format version number	7	7
Detector	ACIS-25678	ACIS-25678	Obspar file type	PREDICTED	ACTUAL
Grating	NONE	NONE	Obspar update status	NONE	UPDATED
Data mode	VFAINT	VFAINT	CCD I0 on	N	N
Observation mode	POINTING	POINTING	CCD I1 on	N	N
[deg] Pointing RA	308.569252	308.5997384800537	CCD I2 on	O1	Y
[deg] Pointing Dec	-31.965728	-31.97473689347522	CCD I3 on	N	N
[deg] Pointing Roll	309.787934	309.9606817171167	CCD S0 on	N	N
[mm] SIM focus pos	-0.684267	-0.6828225247311905	CCD S1 on	Y	Y
[mm] SIM defocus	0	0.001444936568705701	CCD S2 on	Y	Y
[mm] SIM translation stage pos	-190.132523	-190.1400660498719	CCD S3 on	Y	Y
[mm] SIM translation stage offset	0	0.00754346686406393	CCD S4 on	Y	Y
[s] Observation start time (MET)	430350200.184000	430349105.87072	CCD S5 on	N	N
Observation start date	2011-08-21T21:42:14	2011-08-21T21:25:05	Number of optional ACIS chips dropped	0	0
[s] Observation end time (MET)	430360200.184000	430360800.60883	On-chip summing requested	N	N
Observation end date	2011-08-22T00:28:54	2011-08-22T00:40:00	Subarray requested	NONE	NONE
Read mode	TIMED	TIMED	Alternating exposures requested	N	N
			[s] Primary exposure time	0.000000	3.1

2.3 Aspect



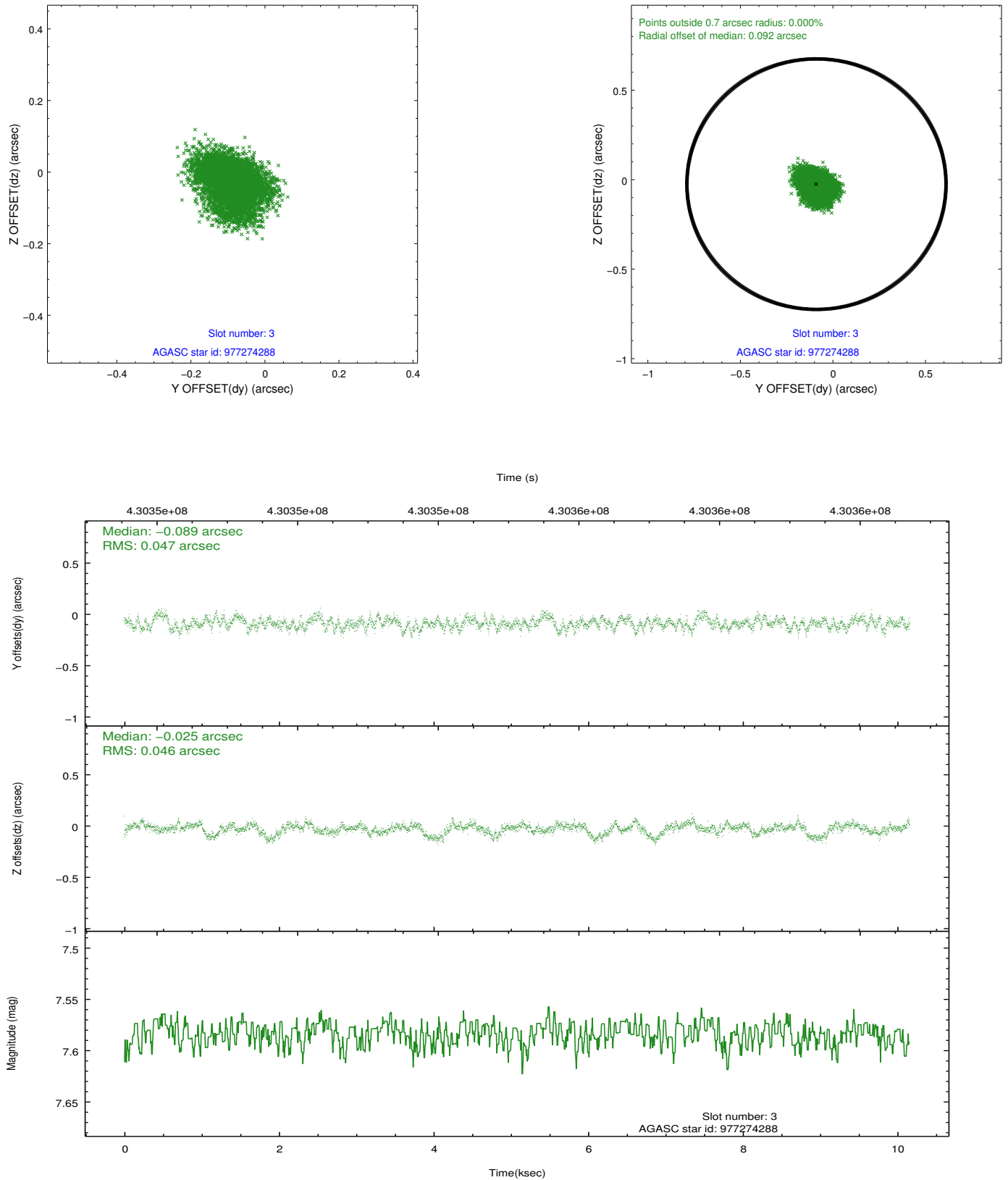


Slot Statistics

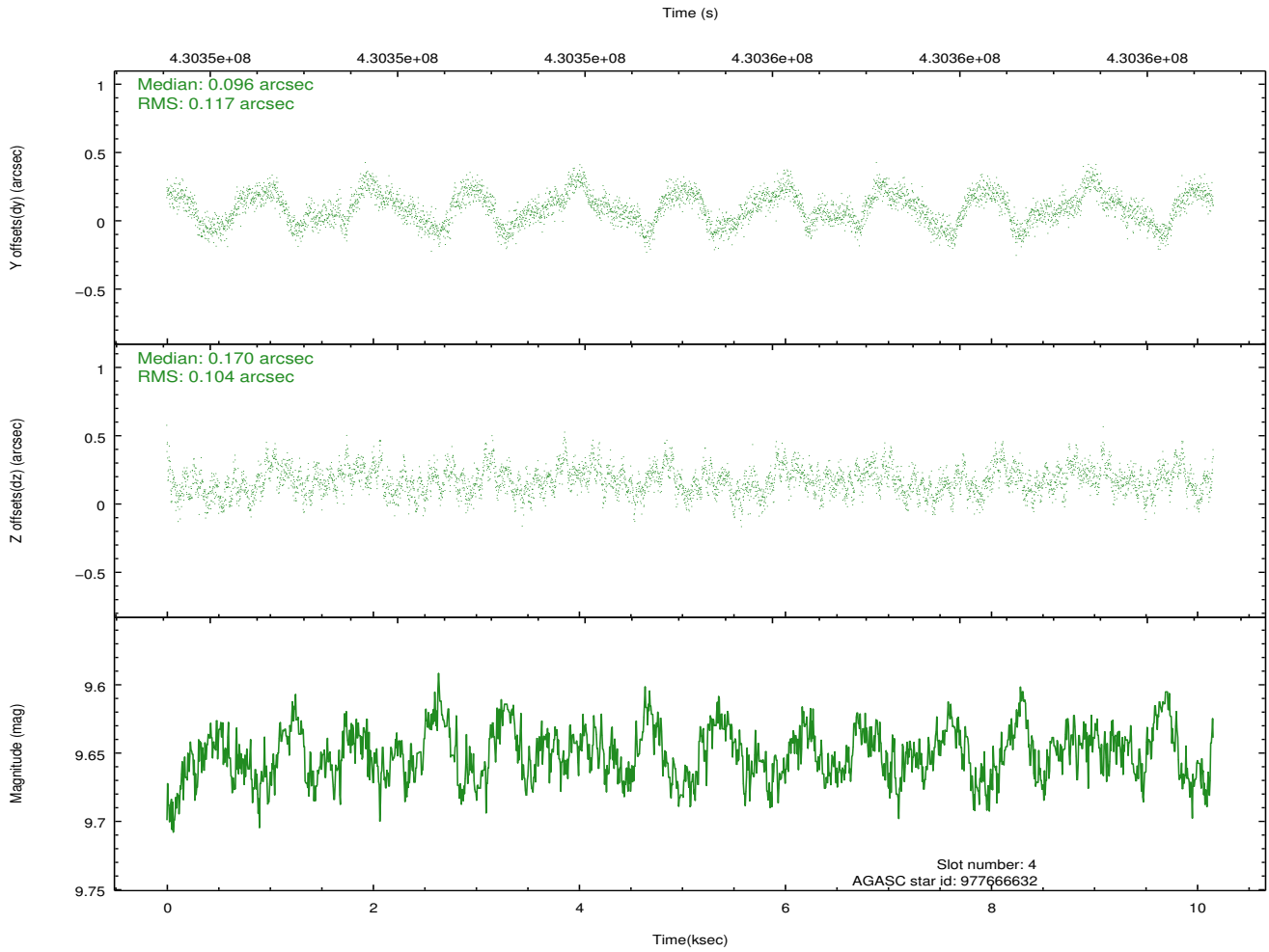
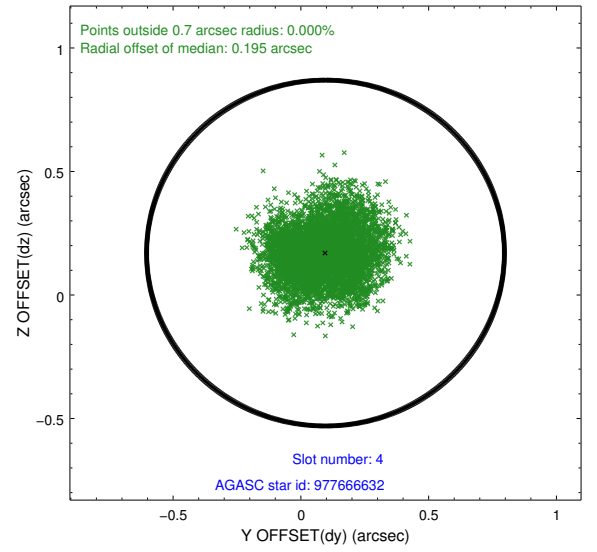
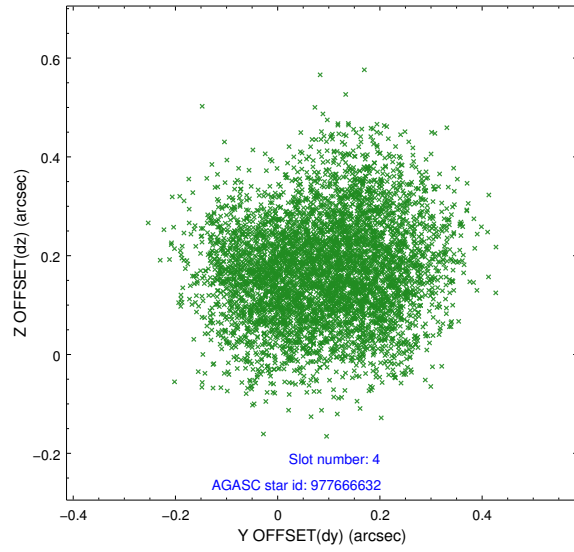
slot	status	id	mag	n_pts	med_dy	med_dz	dr1	dr2	ra	dec	mean_y	mean_z
0	FID	ACIS-S-2	6.99	2478	-0.076	-0.043	0.006	0.011	0.000000	0.000000	-766.87	-1735.52
1	FID	ACIS-S-4	7.07	2478	0.244	0.048	0.005	0.010	0.000000	0.000000	2146.49	172.51
2	FID	ACIS-S-5	7.10	2478	-0.200	0.004	0.006	0.011	0.000000	0.000000	-1819.17	166.74
3	GUIDE	977274288	7.58	4956	-0.089	-0.025	0.072	0.115	308.497209	-31.212304	-2226.18	1564.95
4	GUIDE	977666632	9.65	4949	0.096	0.170	0.170	0.258	308.032949	-32.305532	-101.22	-2039.06
5	GUIDE	977802080	9.47	4947	-0.003	-0.114	0.118	0.189	309.514664	-32.077568	2164.98	1949.73
6	GUIDE	977803752	9.10	4953	0.025	-0.151	0.100	0.159	309.187494	-32.207154	1877.17	887.69
7	GUIDE	977801368	9.75	4950	-0.021	0.122	0.149	0.232	308.789109	-32.302937	1362.02	-263.00

2.4 Star Slots

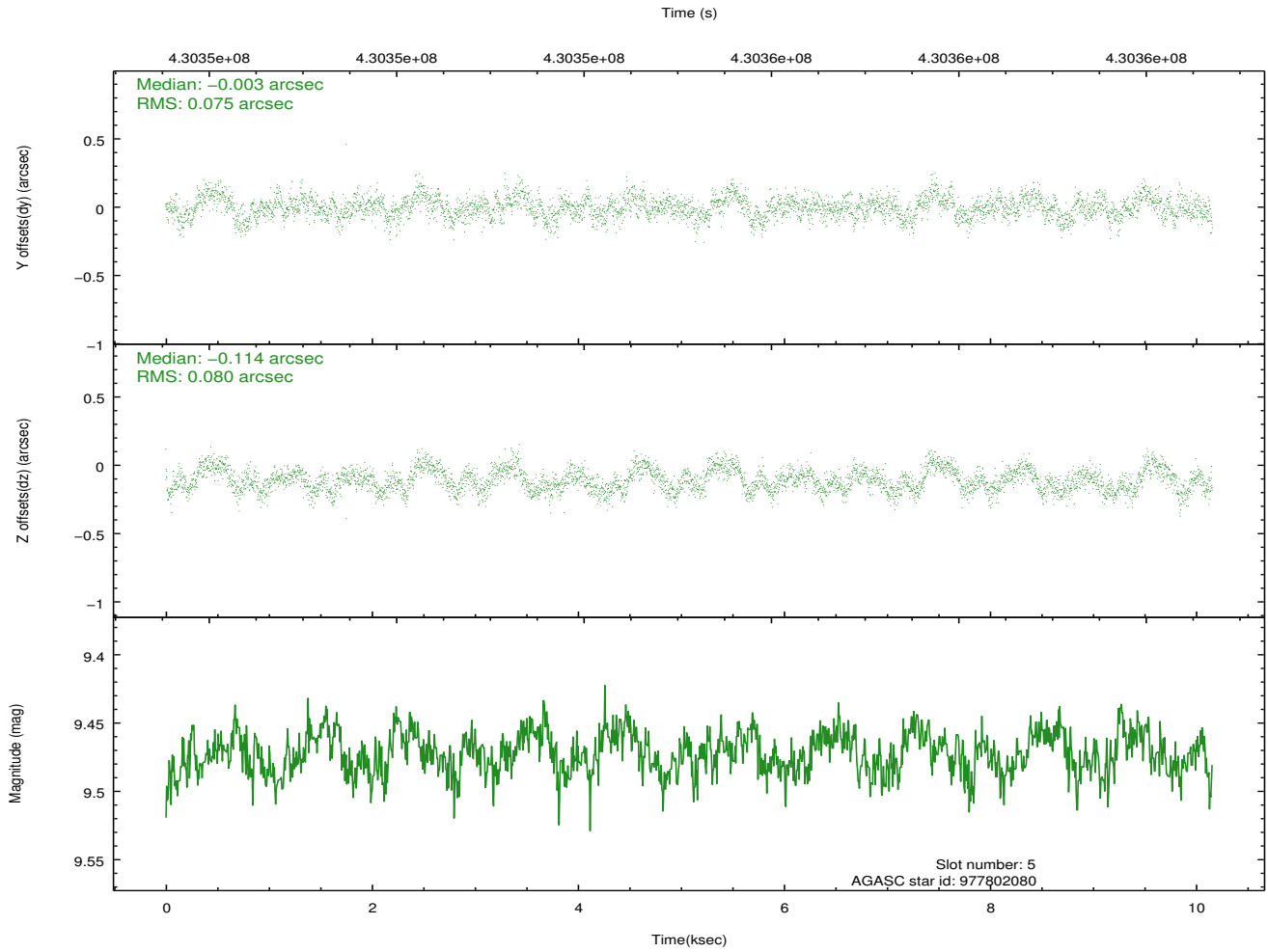
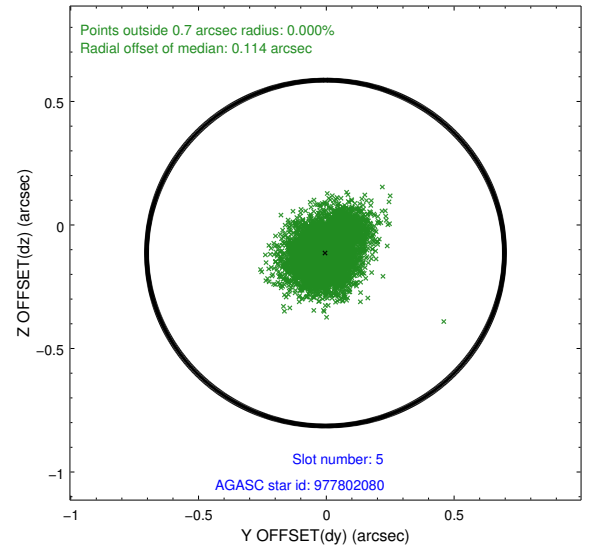
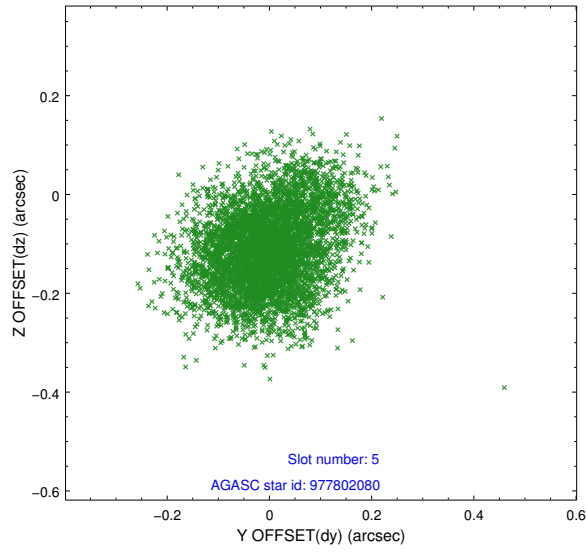
2.4.1 Slot 3



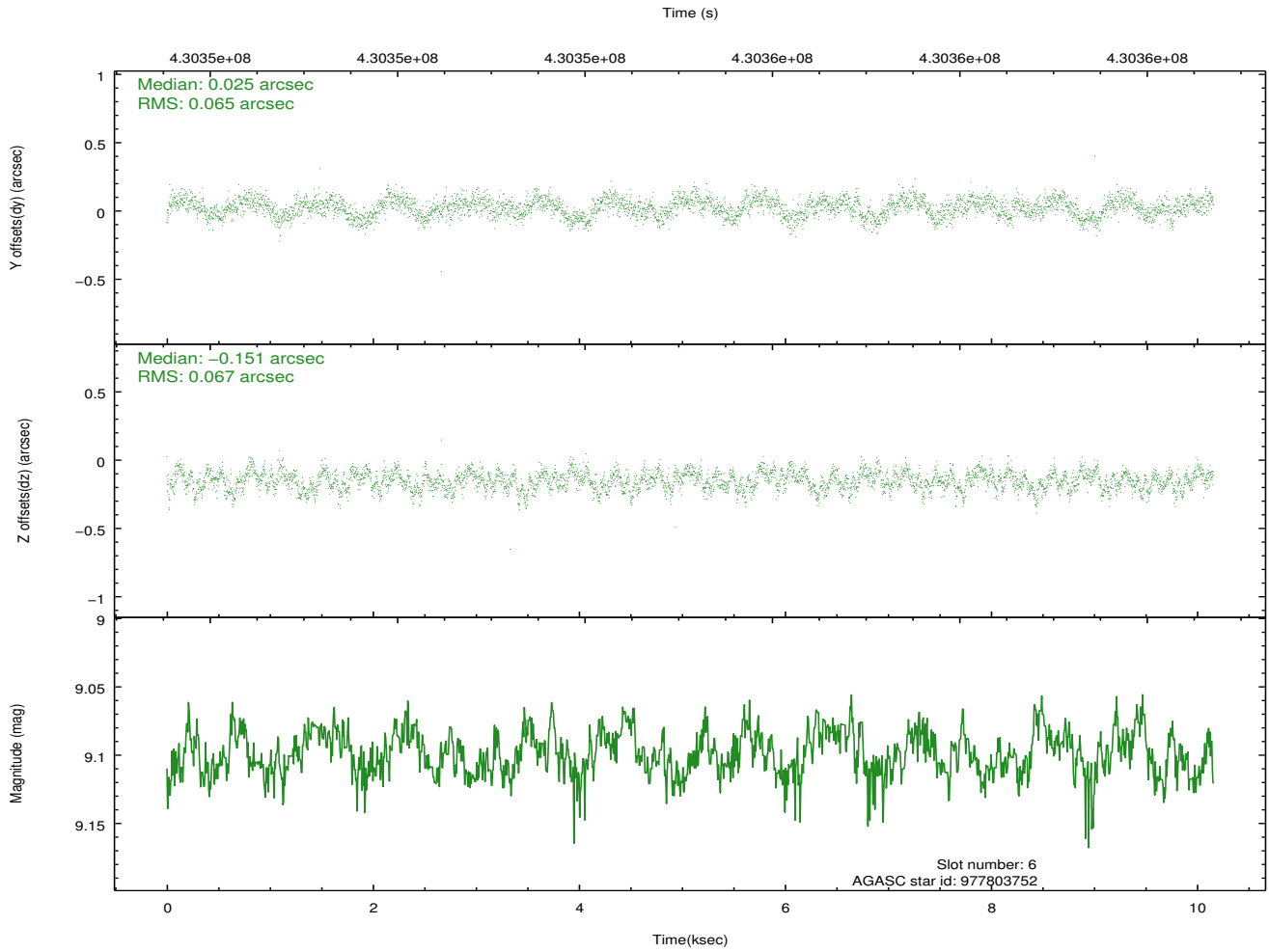
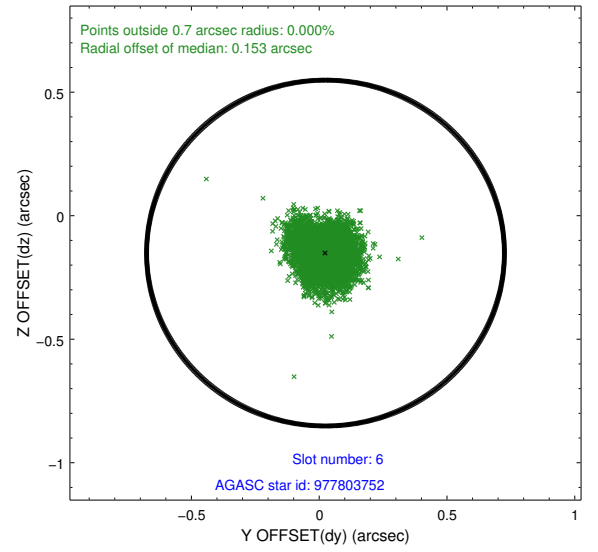
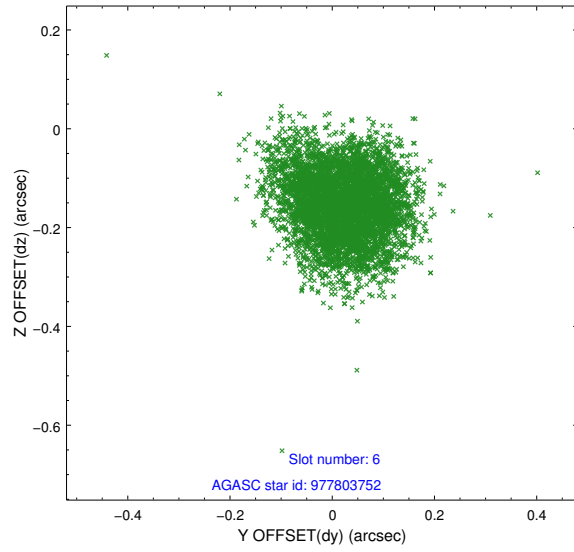
2.4.2 Slot 4



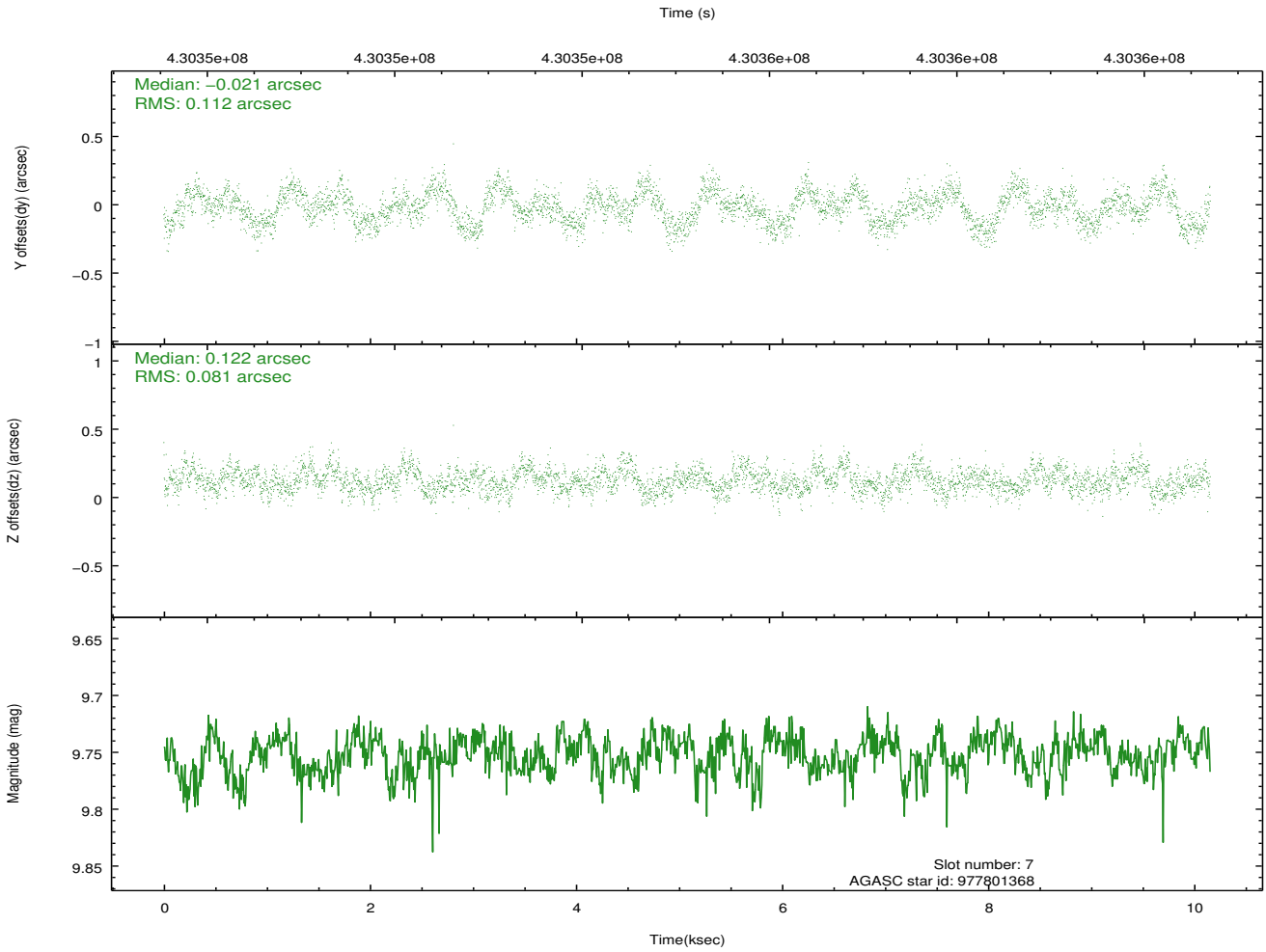
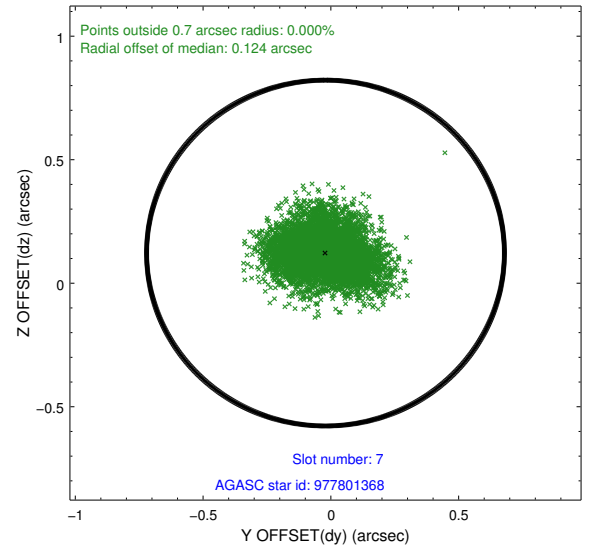
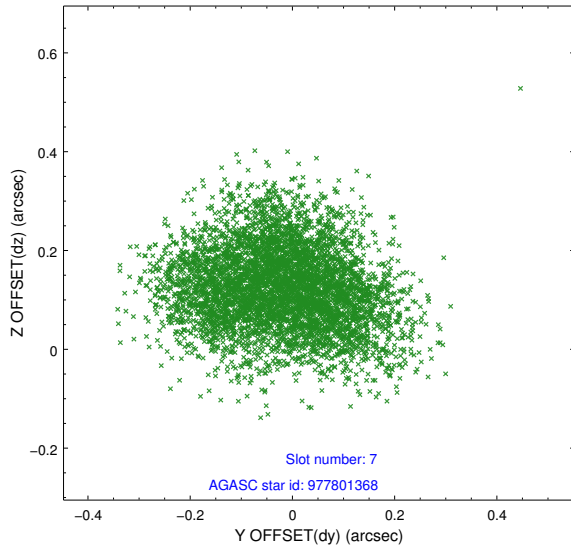
2.4.3 Slot 5



2.4.4 Slot 6

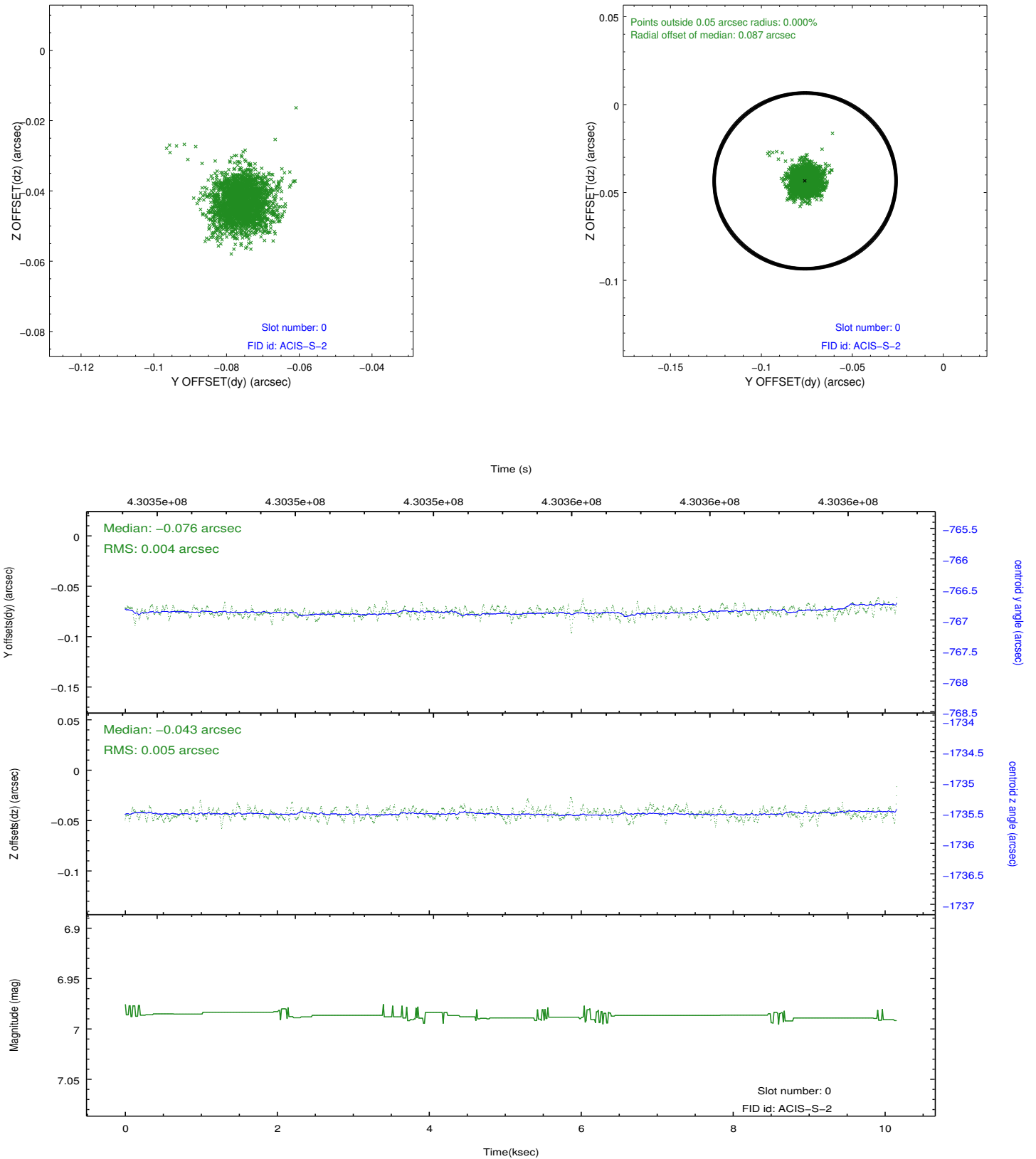


2.4.5 Slot 7

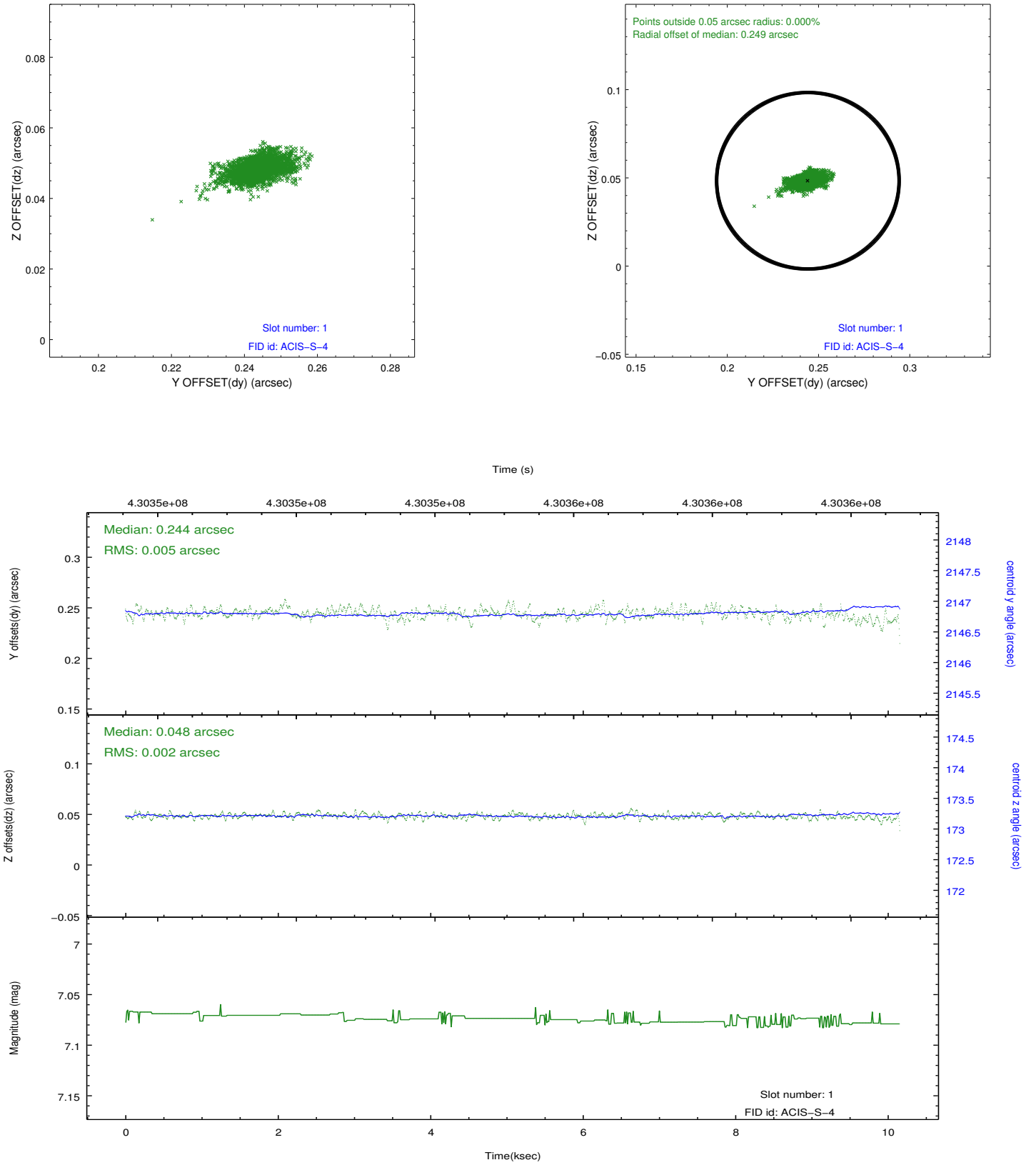


2.5 FID Slots

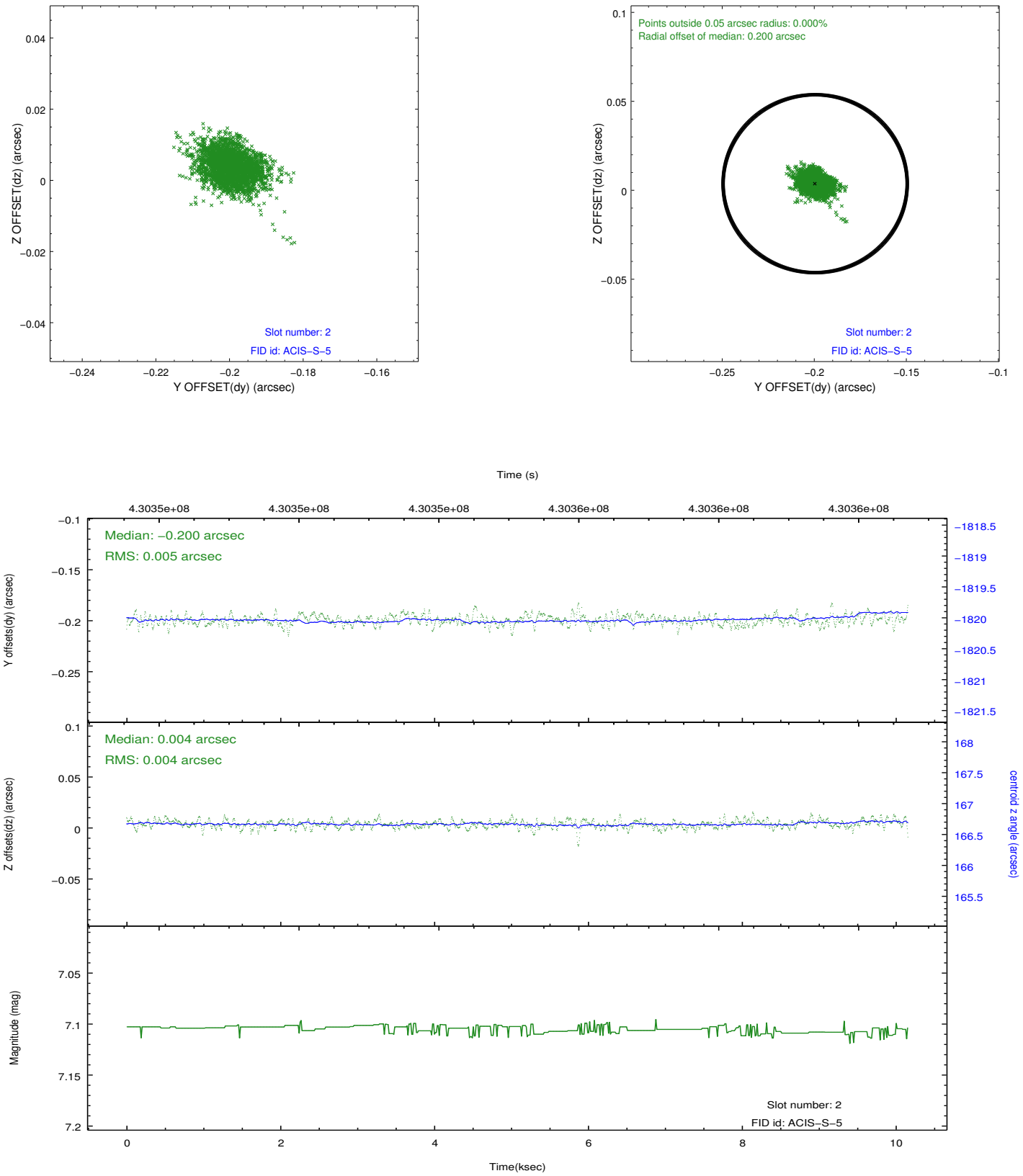
2.5.1 Slot 0



2.5.2 Slot 1



2.5.3 Slot 2



A Summary

A.1 Status

V&V Scientist	Jen Lauer
V&V Date (YYYY-MM-DD)	2012.02.22
V&V Edition	1
V&V Disposition and Status	OK
V&V Charge Time	10.036437771559

A.2 Comments