

V&V Reference Report

L2 ASCDS Version : 8.4.5

Observation 12279 - L2 Version 2
Chandra X-Ray Center

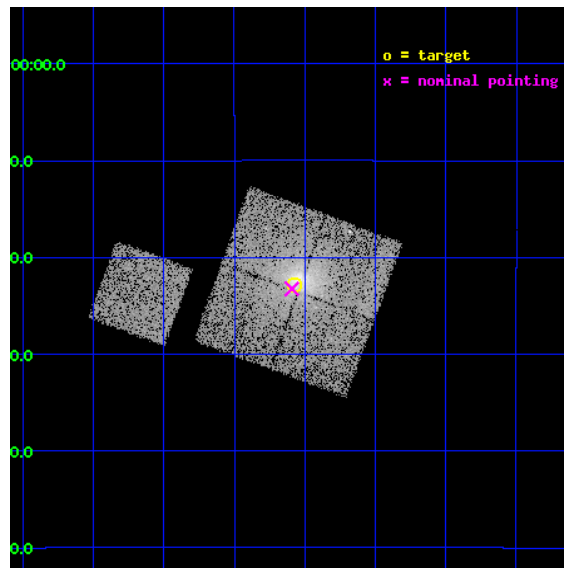
L2 Processing Date : Jul 3 2012

Contents

1	Front	2
2	OBI	3
2.1	OBI	3
2.1.1	Images	3
2.1.2	Bias	3
2.1.3	Parameters	4
2.1.4	Events	4
2.2	Compared Parameters	5
2.3	Aspect	6
2.4	Star Slots	9
2.4.1	Slot 3	9
2.4.2	Slot 4	10
2.4.3	Slot 5	11
2.4.4	Slot 6	12
2.4.5	Slot 7	13
2.5	FID Slots	14
2.5.1	Slot 0	14
2.5.2	Slot 1	15
2.5.3	Slot 2	16
A	Summary	17
A.1	Status	17
A.2	Comments	17

1 Front

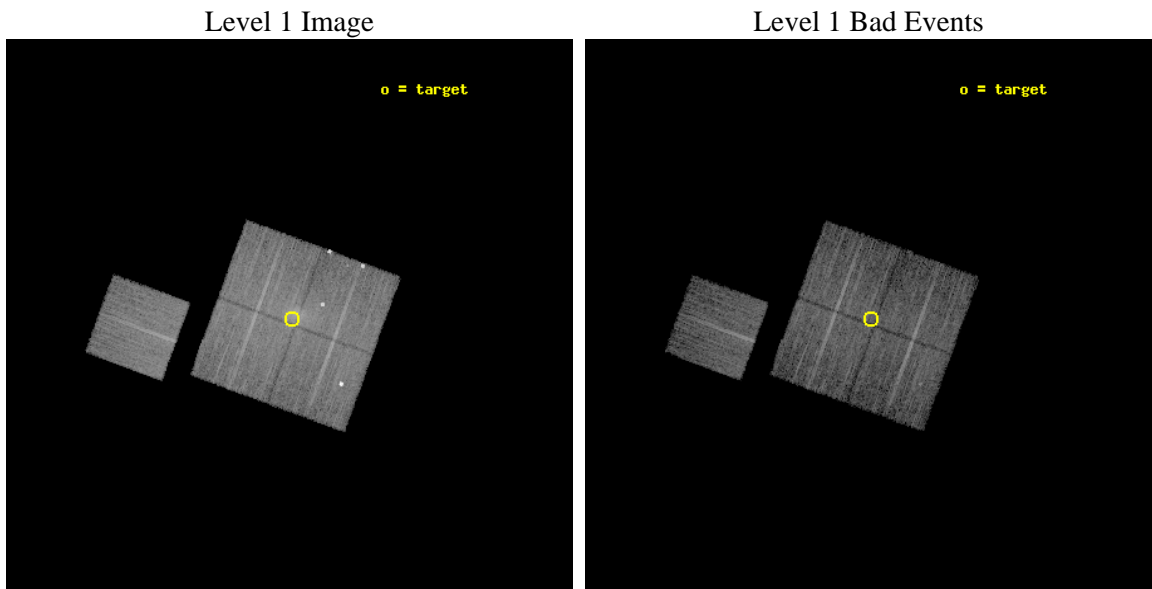
seq_num	800998	Sequence number
obs_id	12279	Observation id
title	A 'CENTENNIAL' SAMPLE OF THE 100 X-RAY BRIGHTEST GALAXY CLUSTERS	
observer	Dr. Alexey Vikhlinin	Principal investigator
object	A2426	Source name
dtcycle	0	
cycle	P	events from which exps? Prim/Second/Both
ra_targ	333.642917	Observer's specified target RA [deg]
dec_targ	-10.381167	Observer's specified target Dec [deg]
ra_nom	333.64791612546	Nominal RA [deg]
dec_nom	-10.387598734937	Nominal Dec [deg]
roll_nom	290.13214438409	Nominal Roll [deg]
revision	2	Processing version of data
ontime	9774.0438981652	Sum of GTIs [s]
livetime	9646.3388190893	Livetime [s]
ontime0	9773.9207782745	Sum of GTIs [s]
ontime1	9770.8207879066	Sum of GTIs [s]
ontime2	9774.0028581619	Sum of GTIs [s]
ontime3	9774.0438981652	Sum of GTIs [s]
ontime6	9773.879738152	Sum of GTIs [s]
l2events	48032	Number of level 2 events



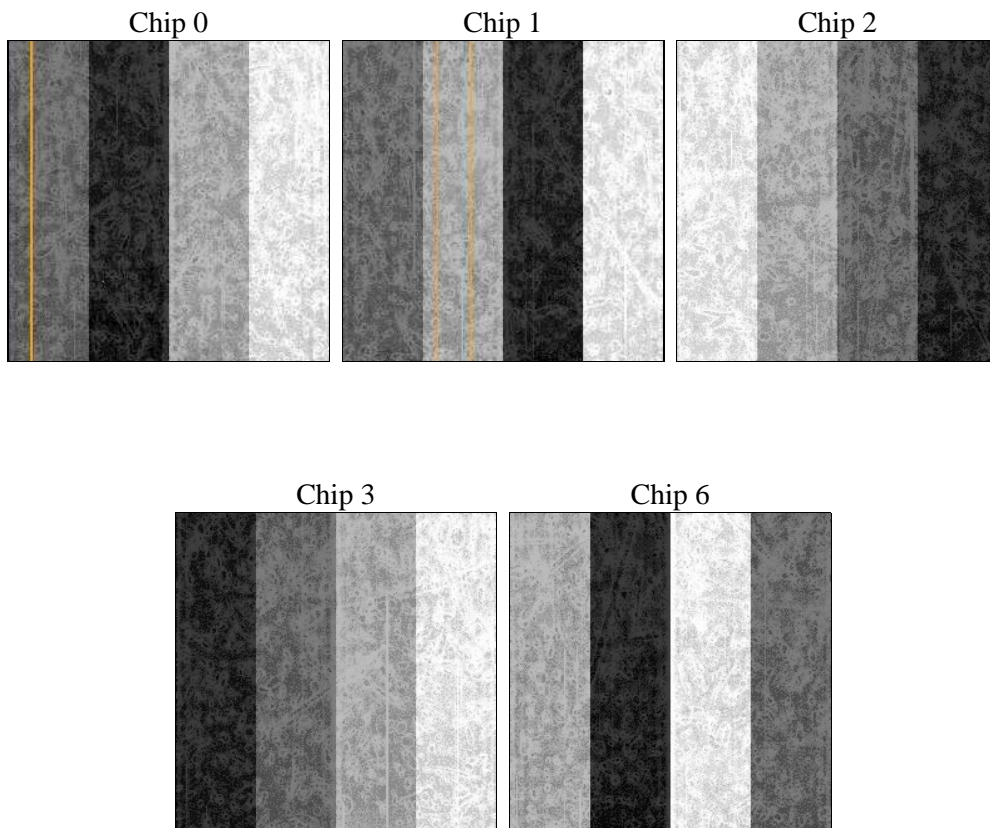
2 OBI

2.1 OBI

2.1.1 Images



2.1.2 Bias



2.1.3 Parameters

obi_num	0	Obi number	sched_exp_time	10000.000000	[s] Scheduled observation exposure time
ascdsver	8.4.5	Processing system revision	ontime	9774.0438981652	Sum of GTIs [s]
caldsver	4.5.0	 	ontime0	9773.9207782745	Sum of GTIs [s]
date	2012-07-03T08:20:30	Date and time of file creation	ontime1	9770.8207879066	Sum of GTIs [s]
revision	2	Processing version of data	ontime2	9774.0028581619	Sum of GTIs [s]
			ontime3	9774.0438981652	Sum of GTIs [s]
			ontime6	9773.879738152	Sum of GTIs [s]
			l1events	382188	Number of level 1 events

2.1.4 Events

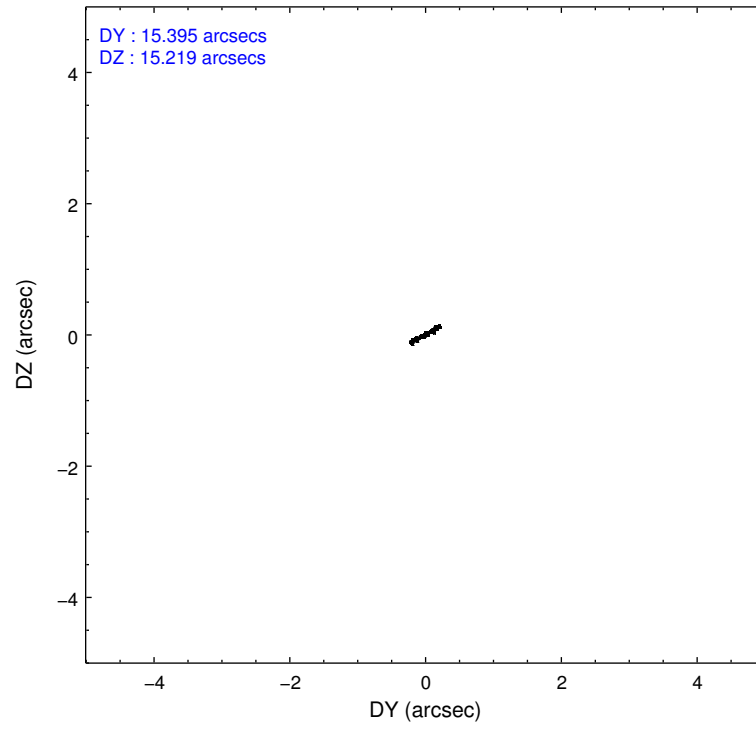
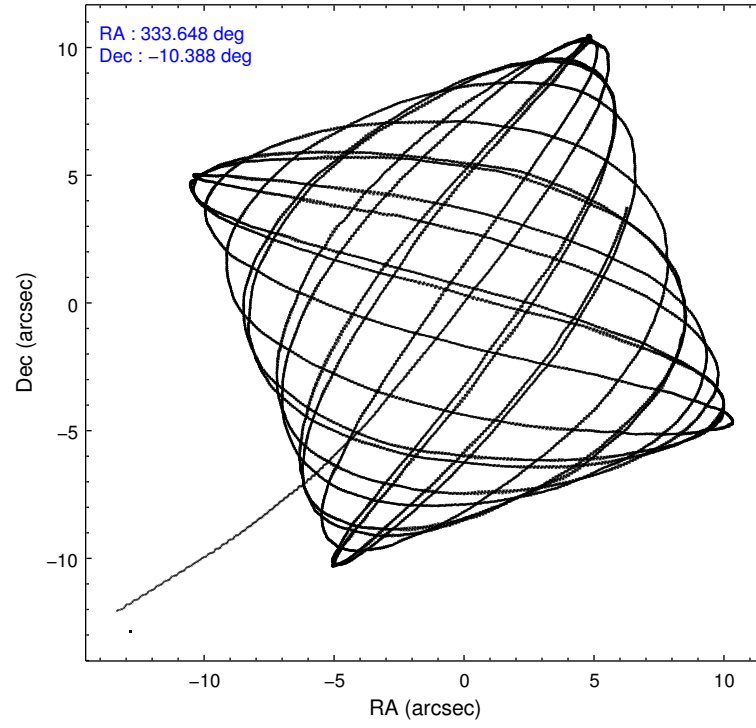
	ccd 0	ccd 1	ccd 2	ccd 3	ccd 6
level 1 events	74769	81493	75479	78580	71867
rejected events	57154	58059	66142	64207	63912
rejected %	76%	71%	87%	81%	88%

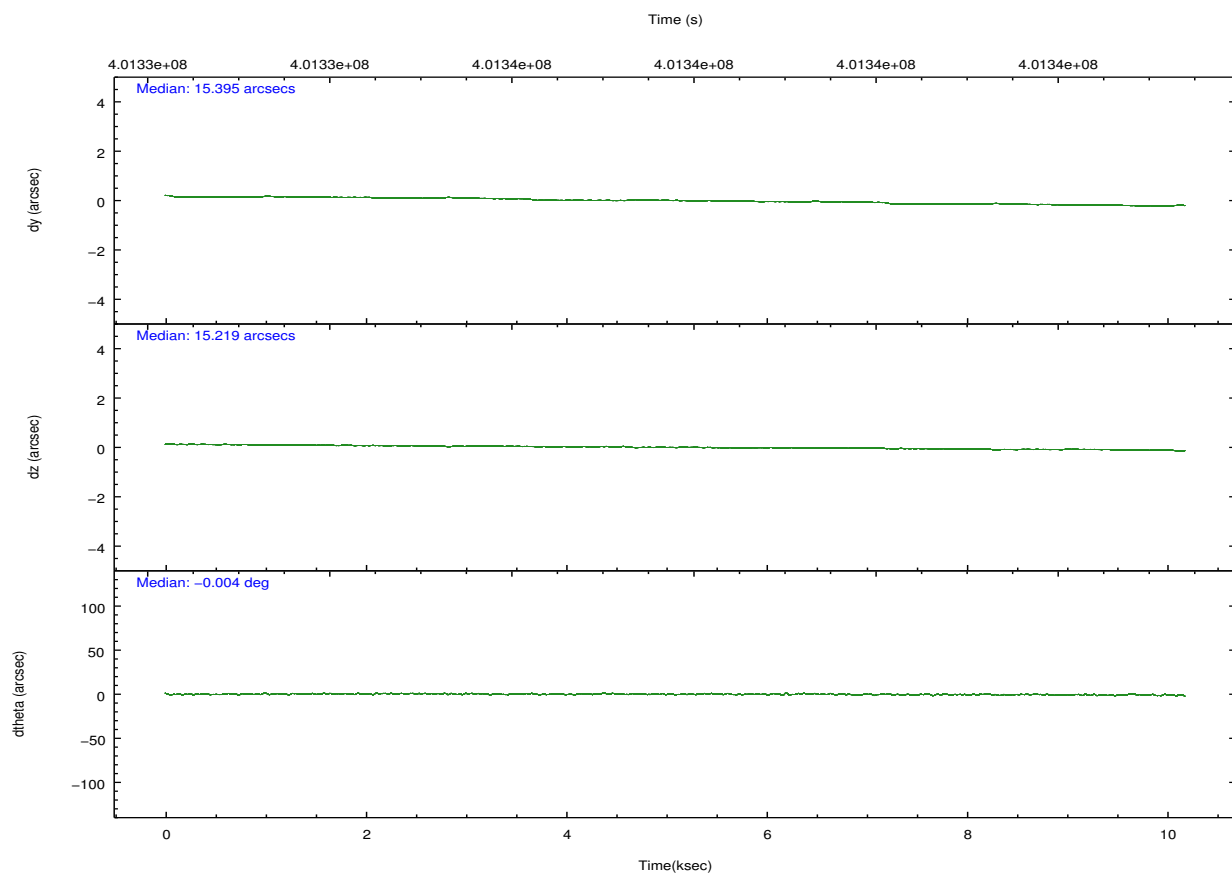
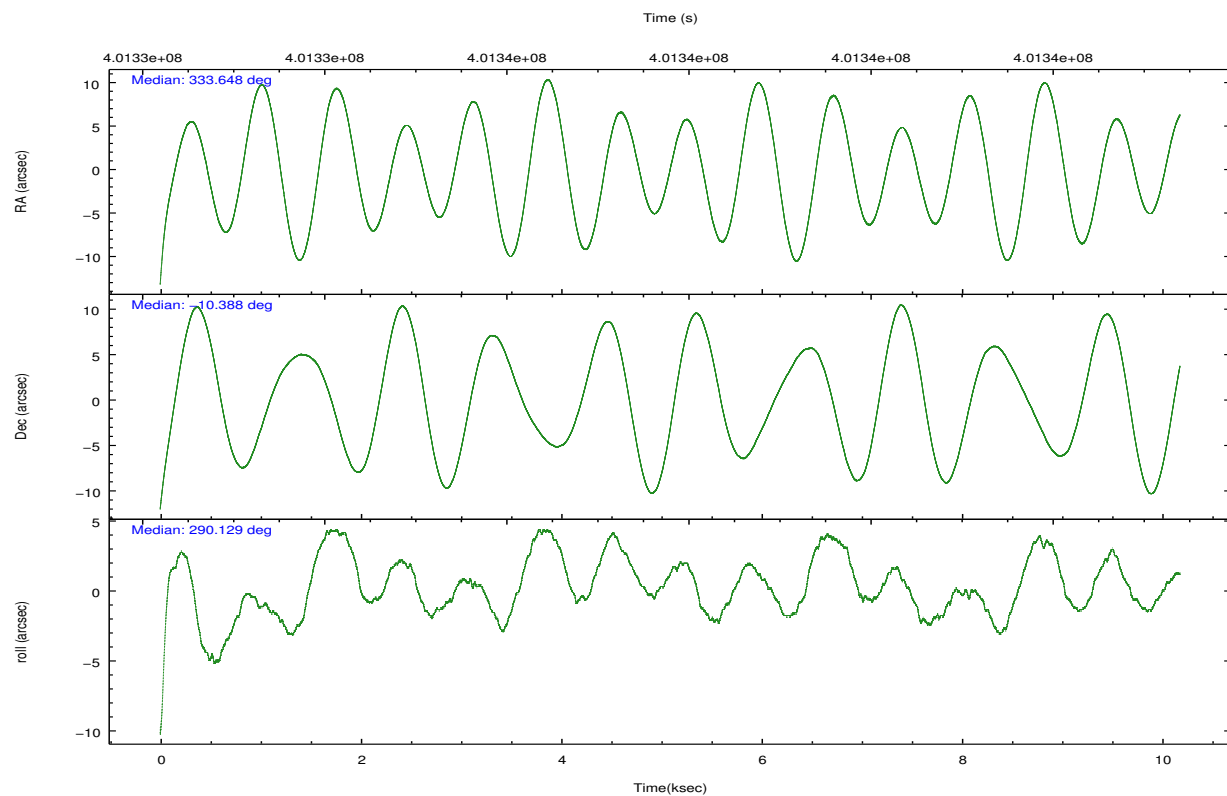
	ccd 0	ccd 1	ccd 2	ccd 3	ccd 6
grade 0 events	6378	14255	4177	8357	2773
	8%	17%	5%	10%	3%
grade 1 events	62	94	58	73	30
	0%	0%	0%	0%	0%
grade 2 events	7842	5029	1919	2278	1804
	10%	6%	2%	2%	2%
grade 3 events	905	1112	840	981	870
	1%	1%	1%	1%	1%
grade 4 events	915	1057	865	1017	795
	1%	1%	1%	1%	1%
grade 5 events	2832	3206	2714	3338	3324
	3%	3%	3%	4%	4%
grade 6 events	1583	1989	1537	1743	1714
	2%	2%	2%	2%	2%
grade 7 events	54252	54751	63369	60793	60557
	72%	67%	83%	77%	84%

2.2 Compared Parameters

Parameter	Planned	Actual	Parameter	Planned	Actual
Instrument	ACIS	ACIS	Obspar format version number	7	7
Detector	ACIS-01236	ACIS-01236	Obspar file type	PREDICTED	ACTUAL
Grating	NONE	NONE	Obspar update status	NONE	UPDATED
Data mode	VFAINT	VFAINT	CCD I0 on	Y	Y
Observation mode	POINTING	POINTING	CCD I1 on	Y	Y
[deg] Pointing RA	333.626381	333.6479161254575	CCD I2 on	Y	Y
[deg] Pointing Dec	-10.370045	-10.38759873493741	CCD I3 on	Y	Y
[deg] Pointing Roll	289.919594	290.1321443840898	CCD S0 on	N	N
[mm] SIM focus pos	-0.782348	-0.7809083437167272	CCD S1 on	N	N
[mm] SIM defocus	0	0.001439871863259334	CCD S2 on	O1	Y
[mm] SIM translation stage pos	-233.592463	-233.5874344608287	CCD S3 on	N	N
[mm] SIM translation stage offset	0	-0.005018542100998502	CCD S4 on	N	N
[s] Observation start time (MET)	401332874.184000	401331764.22701	CCD S5 on	N	N
Observation start date	2010-09-20T01:20:08	2010-09-20T01:02:44	Number of optional ACIS chips dropped	0	0
[s] Observation end time (MET)	401342874.184000	401343835.65263	On-chip summing requested	N	N
Observation end date	2010-09-20T04:06:48	2010-09-20T04:23:55	Subarray requested	NONE	NONE
Read mode	TIMED	TIMED	Alternating exposures requested	N	N
			[s] Primary exposure time	0.000000	3.1

2.3 Aspect



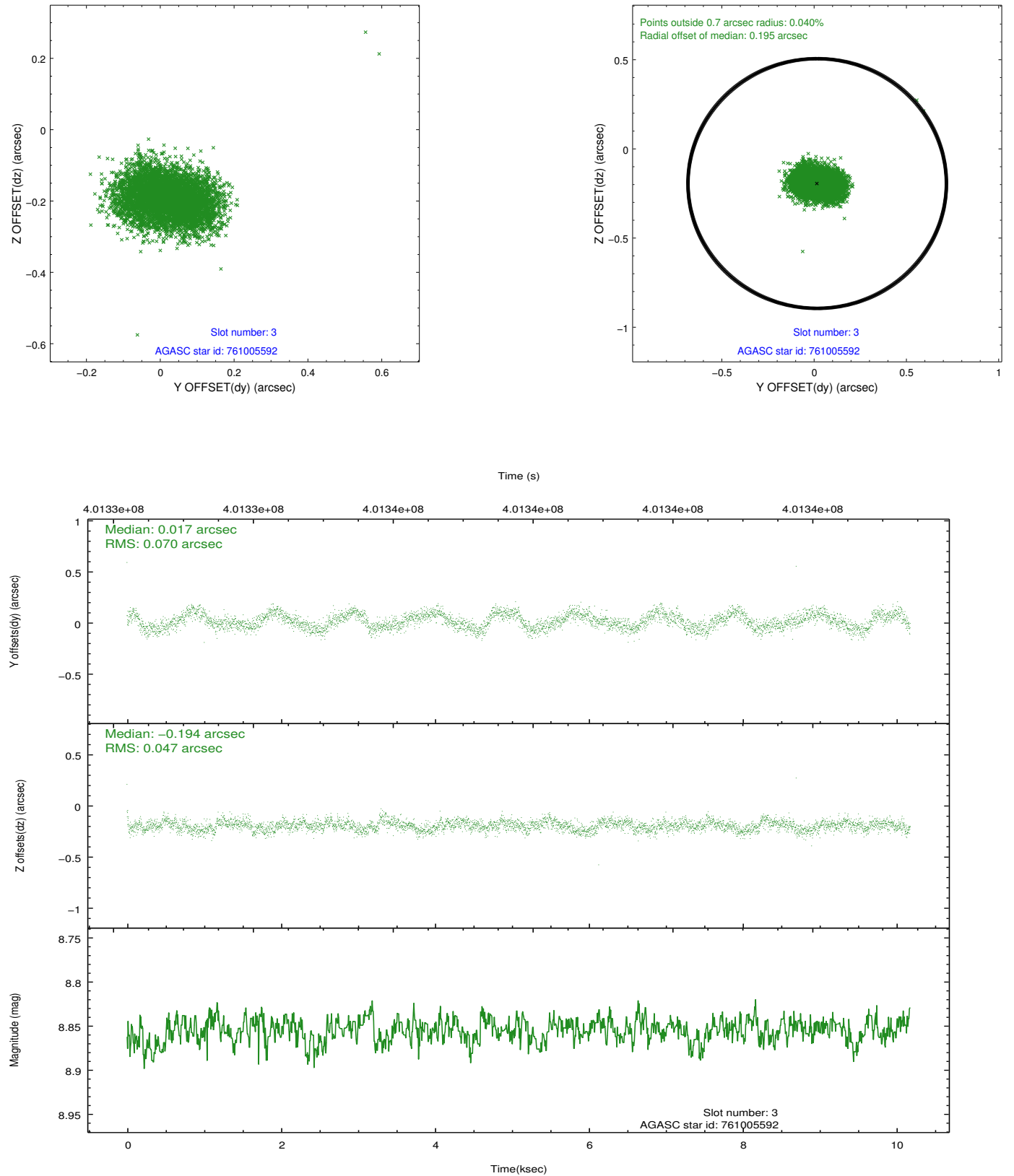


Slot Statistics

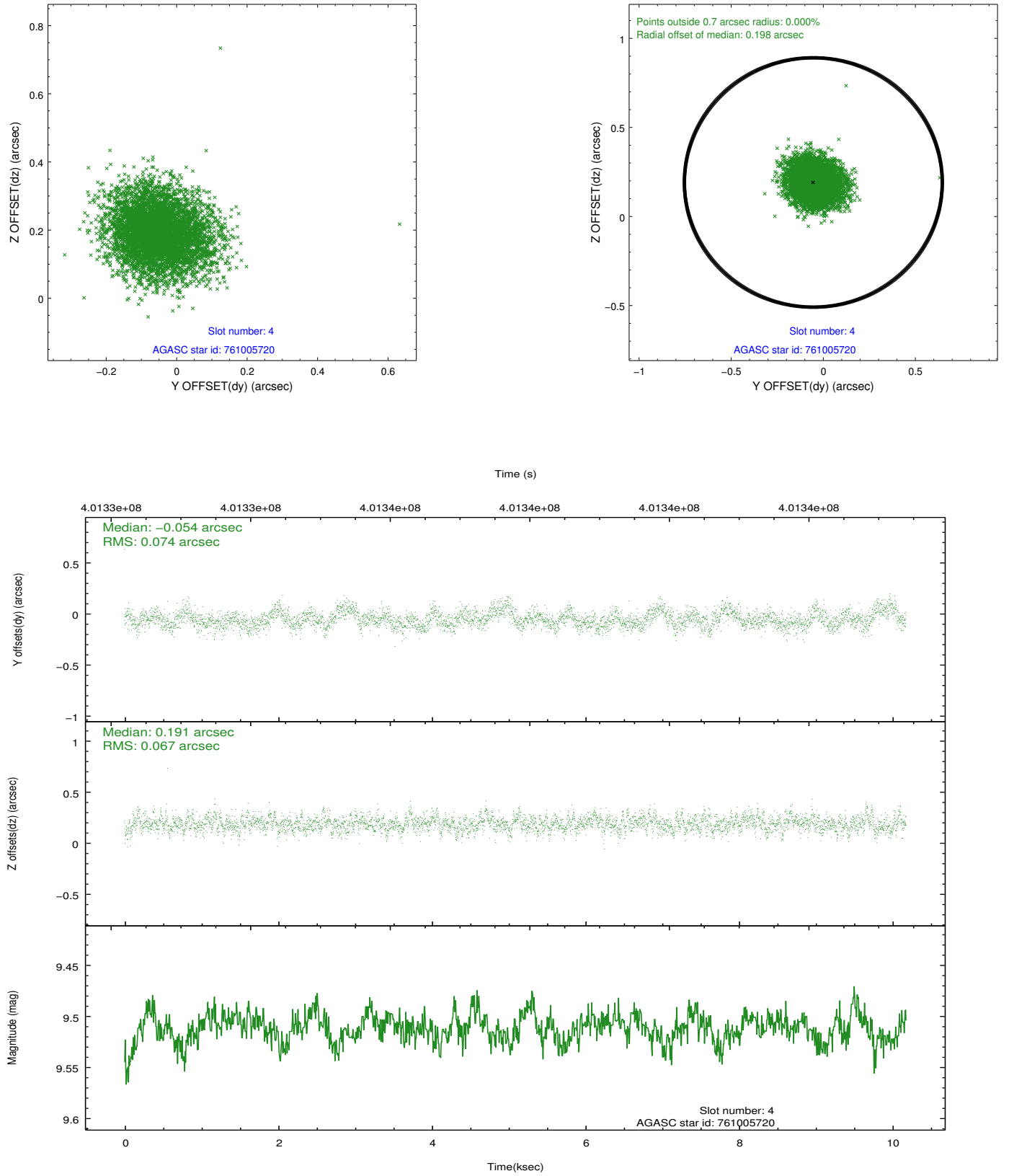
slot	status	id	mag	n_pts	med_dy	med_dz	dr1	dr2	ra	dec	mean_y	mean_z
0	FID	ACIS-I-1	7.10	2483	0.092	-0.023	0.007	0.012	0.000000	0.000000	924.19	-838.81
1	FID	ACIS-I-2	7.01	2482	-0.054	-0.031	0.011	0.021	0.000000	0.000000	-769.76	-845.59
2	FID	ACIS-I-5	7.08	2483	-0.131	0.127	0.009	0.016	0.000000	0.000000	-1824.61	1058.45
3	GUIDE	761005592	8.85	4966	0.017	-0.194	0.090	0.141	334.120342	-10.760818	1919.35	1162.83
4	GUIDE	761005720	9.51	4961	-0.054	0.191	0.106	0.172	333.284621	-10.011824	-1624.00	-699.50
5	GUIDE	761006040	9.44	4962	-0.093	-0.039	0.134	0.214	333.758719	-10.030683	-988.33	858.04
6	GUIDE	761006144	8.60	4966	-0.094	0.062	0.085	0.136	334.178388	-10.518511	1169.68	1654.74
7	GUIDE	761016496	9.15	4963	0.232	-0.024	0.104	0.168	333.160534	-10.425995	-370.61	-1619.27

2.4 Star Slots

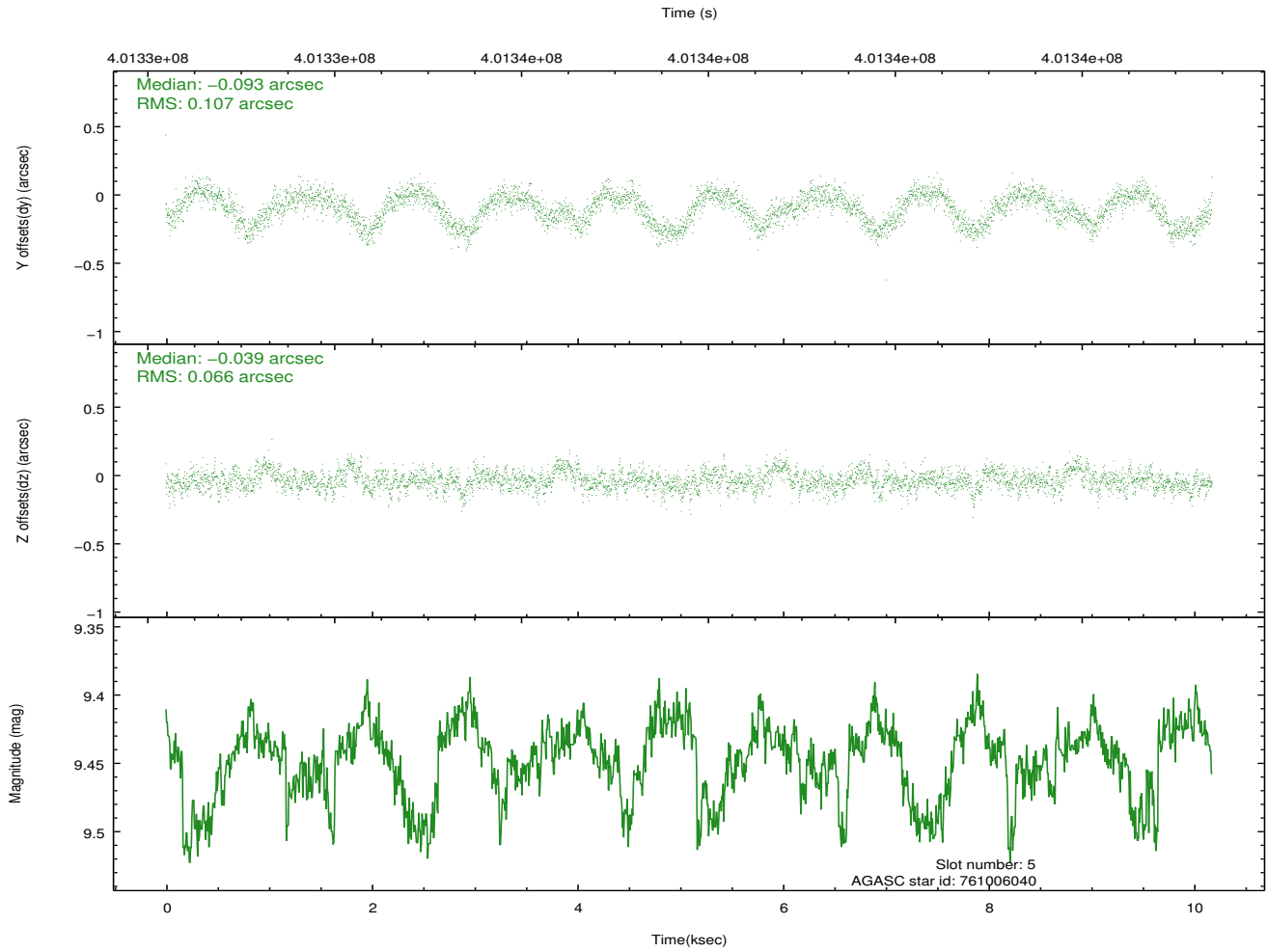
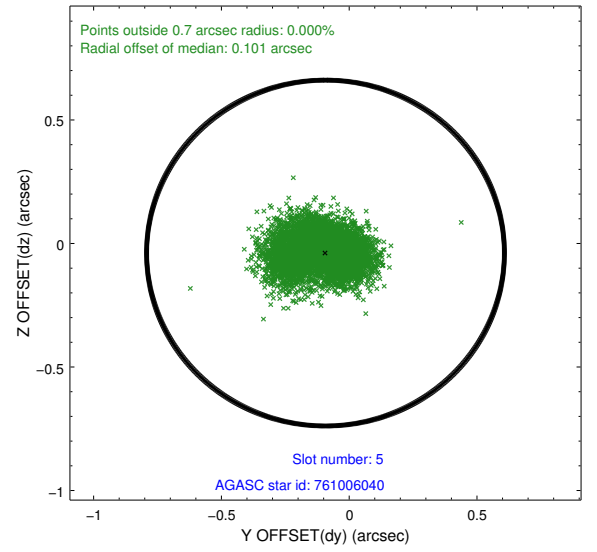
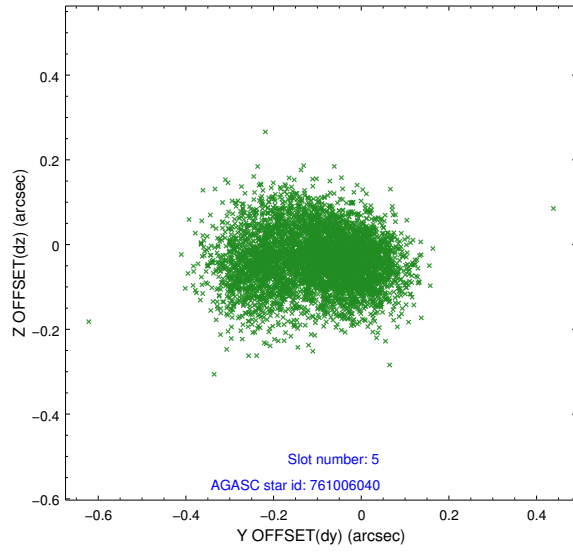
2.4.1 Slot 3



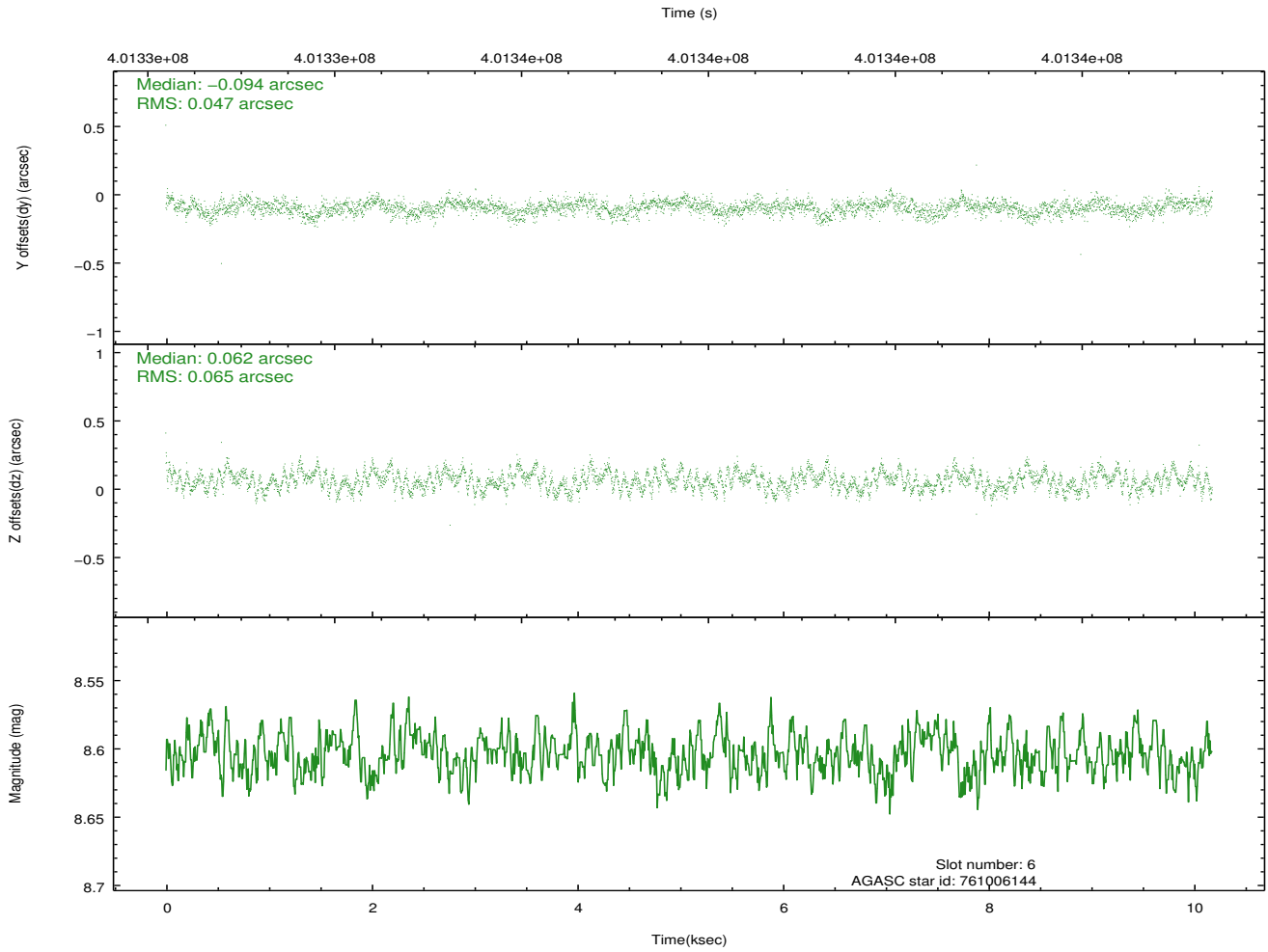
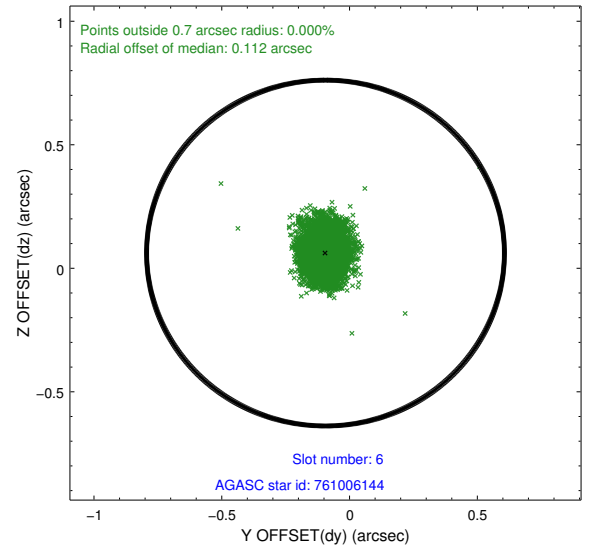
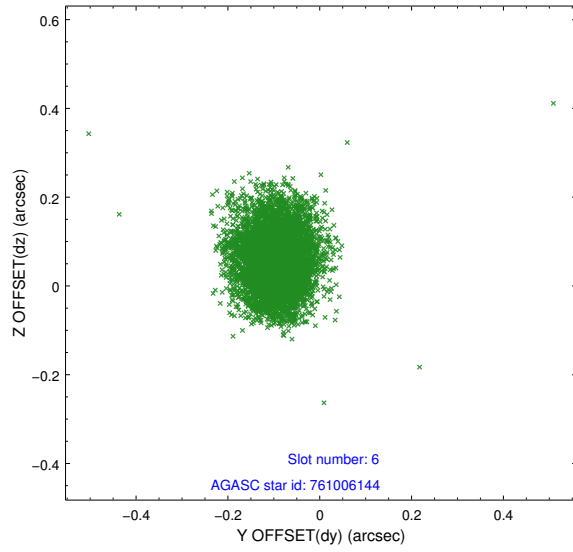
2.4.2 Slot 4



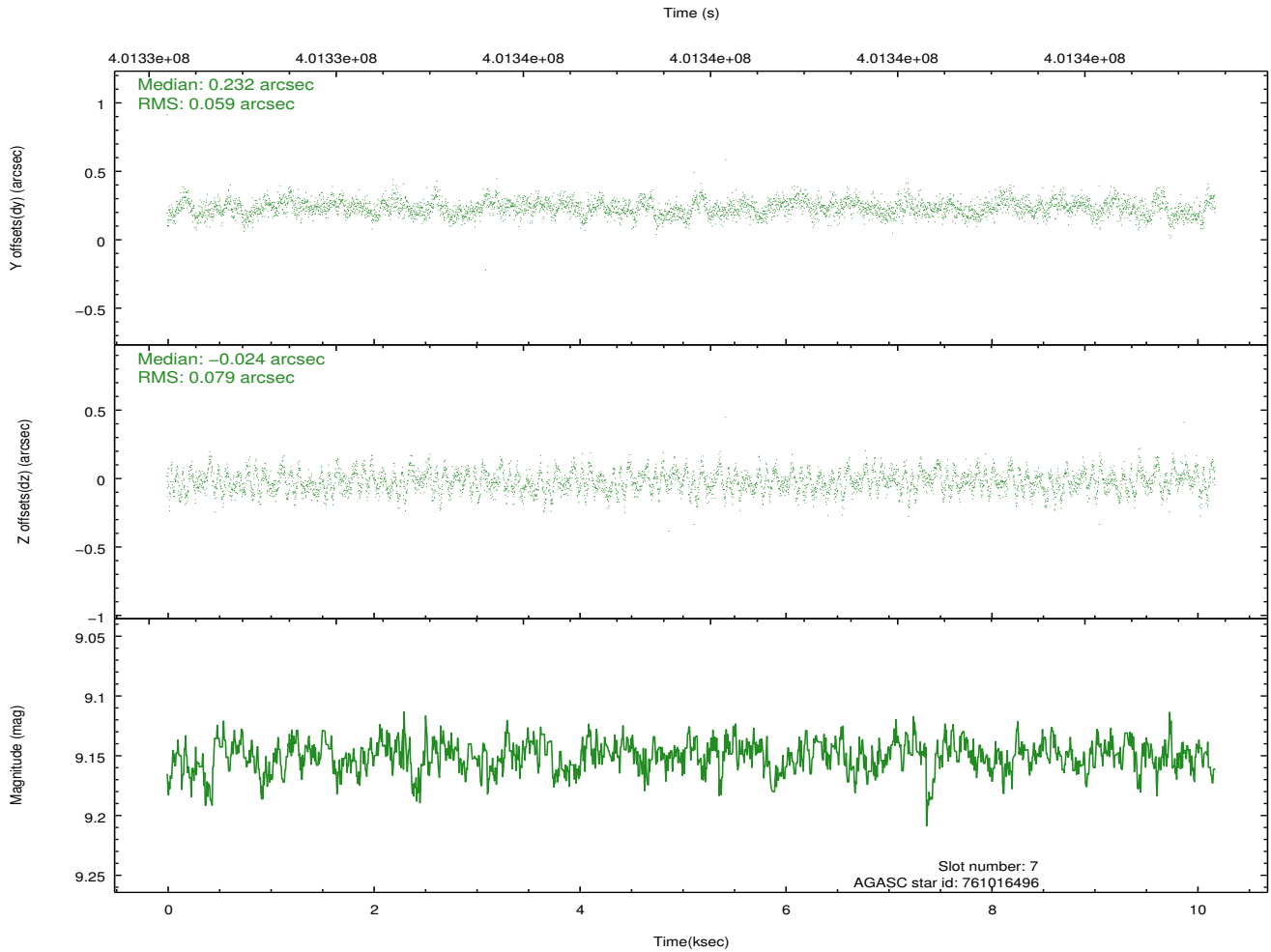
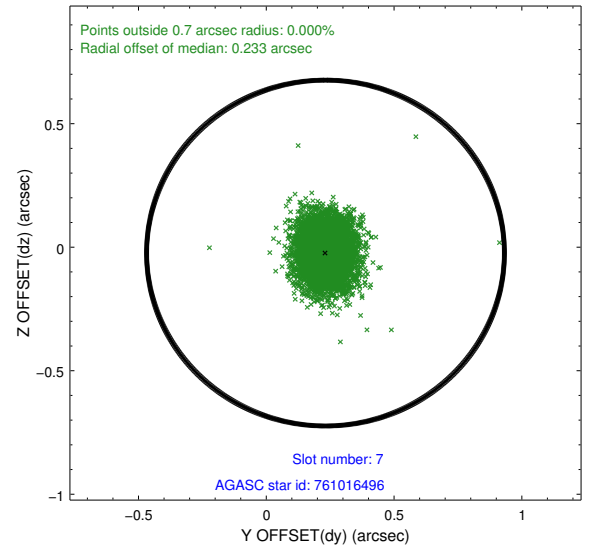
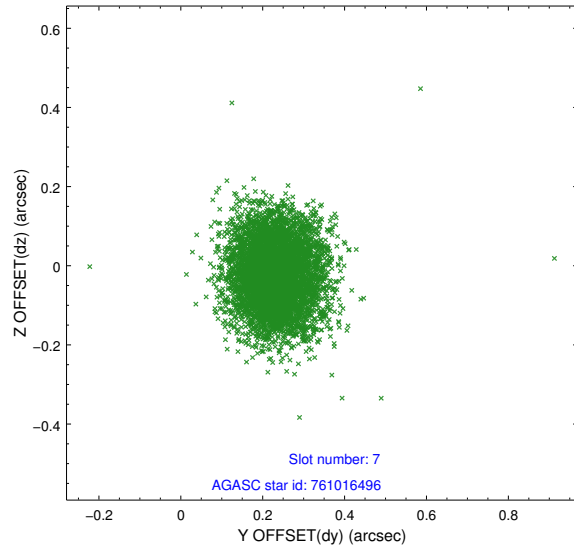
2.4.3 Slot 5



2.4.4 Slot 6

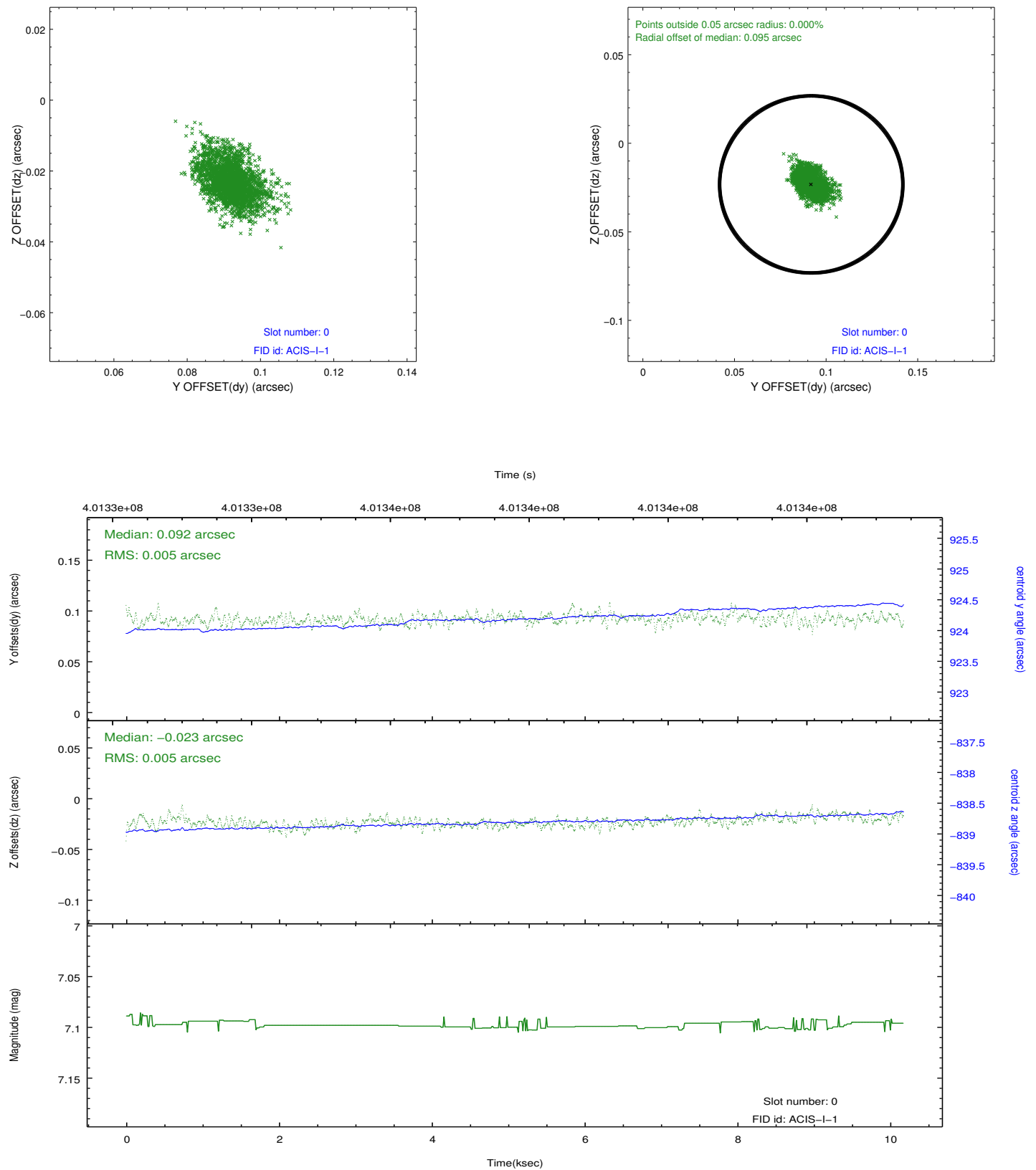


2.4.5 Slot 7

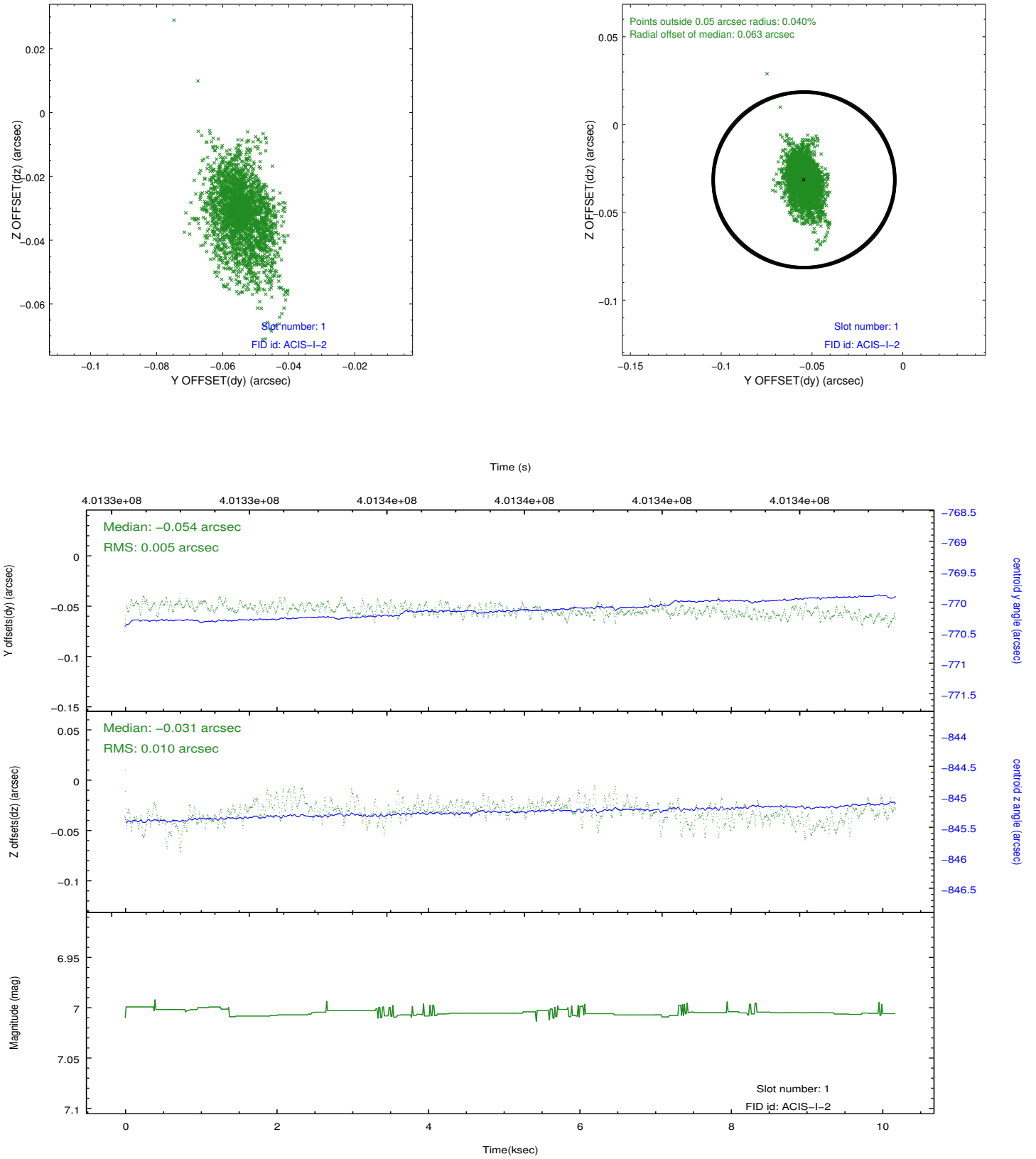


2.5 FID Slots

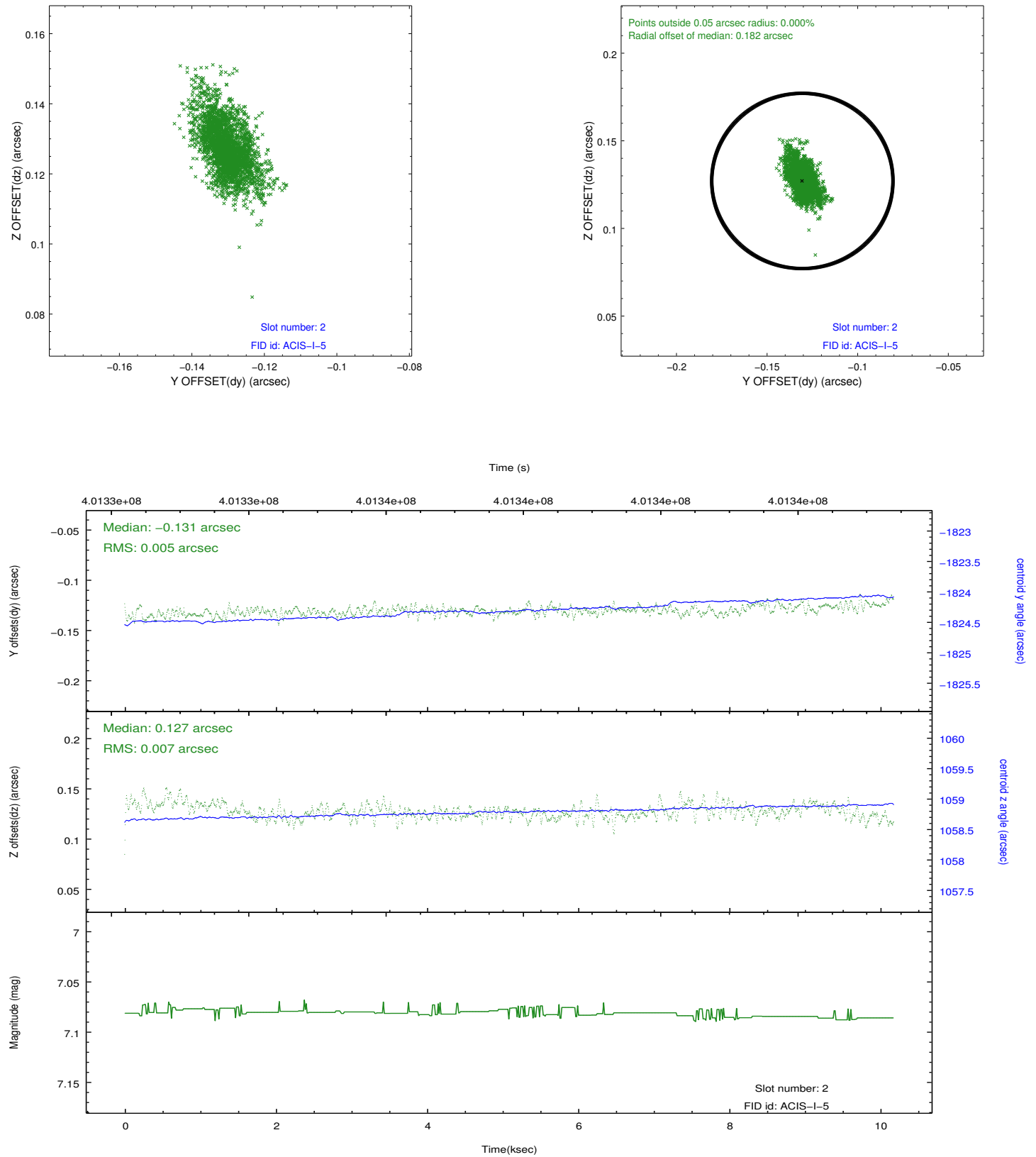
2.5.1 Slot 0



2.5.2 Slot 1



2.5.3 Slot 2



A Summary

A.1 Status

V&V Scientist	Jen Lauer
V&V Date (YYYY-MM-DD)	2012.07.11
V&V Edition	1
V&V Disposition and Status	OK
V&V Charge Time	9.7740438973308

A.2 Comments