

# V&V Reference Report

## L2 ASCDS Version : 8.4.5

Observation 11589 - L2 Version 2  
Chandra X-Ray Center

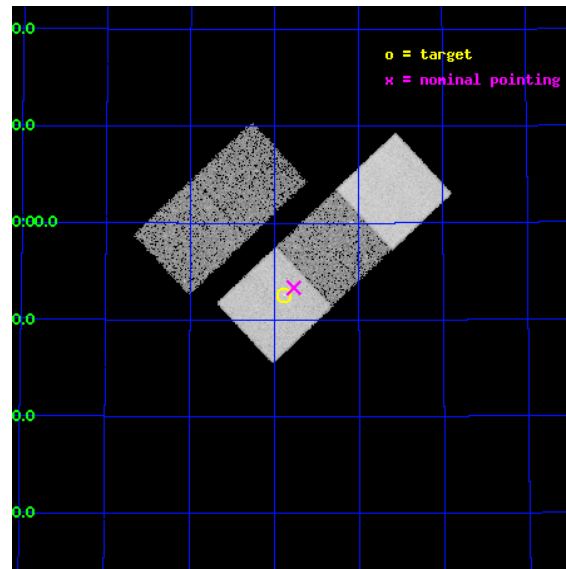
L2 Processing Date : Jun 19 2012

## Contents

<b>1</b>	<b>Front</b>	<b>2</b>
<b>2</b>	<b>OBI</b>	<b>3</b>
2.1	OBI . . . . .	3
2.1.1	Images . . . . .	3
2.1.2	Bias . . . . .	3
2.1.3	Parameters . . . . .	4
2.1.4	Events . . . . .	4
2.2	Compared Parameters . . . . .	5
2.3	Aspect . . . . .	6
2.4	Star Slots . . . . .	9
2.4.1	Slot 3 . . . . .	9
2.4.2	Slot 4 . . . . .	10
2.4.3	Slot 5 . . . . .	11
2.4.4	Slot 6 . . . . .	12
2.4.5	Slot 7 . . . . .	13
2.5	FID Slots . . . . .	14
2.5.1	Slot 0 . . . . .	14
2.5.2	Slot 1 . . . . .	15
2.5.3	Slot 2 . . . . .	16
<b>A</b>	<b>Summary</b>	<b>17</b>
A.1	Status . . . . .	17
A.2	Comments . . . . .	17

# 1 Front

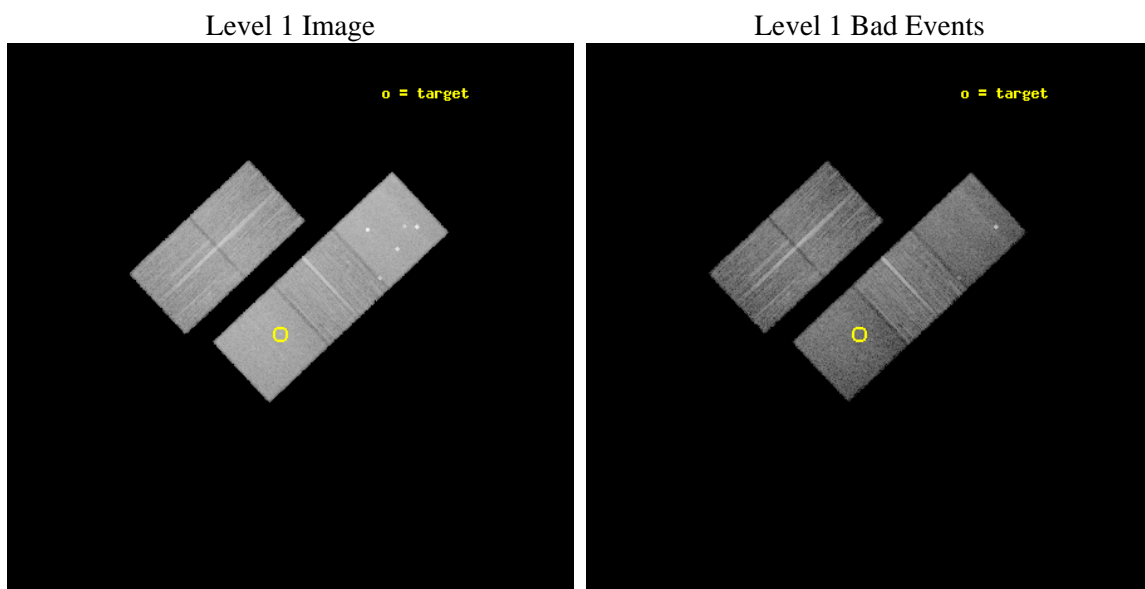
seq_num	702175	Sequence number
obs_id	11589	Observation id
title	Strong radio AGN in the center of galaxy groups	Proposal title
observer	Dr. Ming Sun	Principal investigator
object	NGC 2656	Source name
dtcycle	0	&#160
cycle	P	events from which exps? Prim/Second/Both
ra_targ	131.97125	Observer's specified target RA [deg]
dec_targ	53.876389	Observer's specified target Dec [deg]
ra_nom	131.94264927181	Nominal RA [deg]
dec_nom	53.888819308339	Nominal Dec [deg]
roll_nom	136.74899857543	Nominal Roll [deg]
revision	2	Processing version of data
ontime	12772.000098228	Sum of GTIs [s]
livetime	12605.124514335	Livetime [s]
ontime2	12772.000098228	Sum of GTIs [s]
ontime3	12768.859107971	Sum of GTIs [s]
ontime5	12772.000098228	Sum of GTIs [s]
ontime6	12765.718137383	Sum of GTIs [s]
ontime7	12772.000098228	Sum of GTIs [s]
l2events	162979	Number of level 2 events



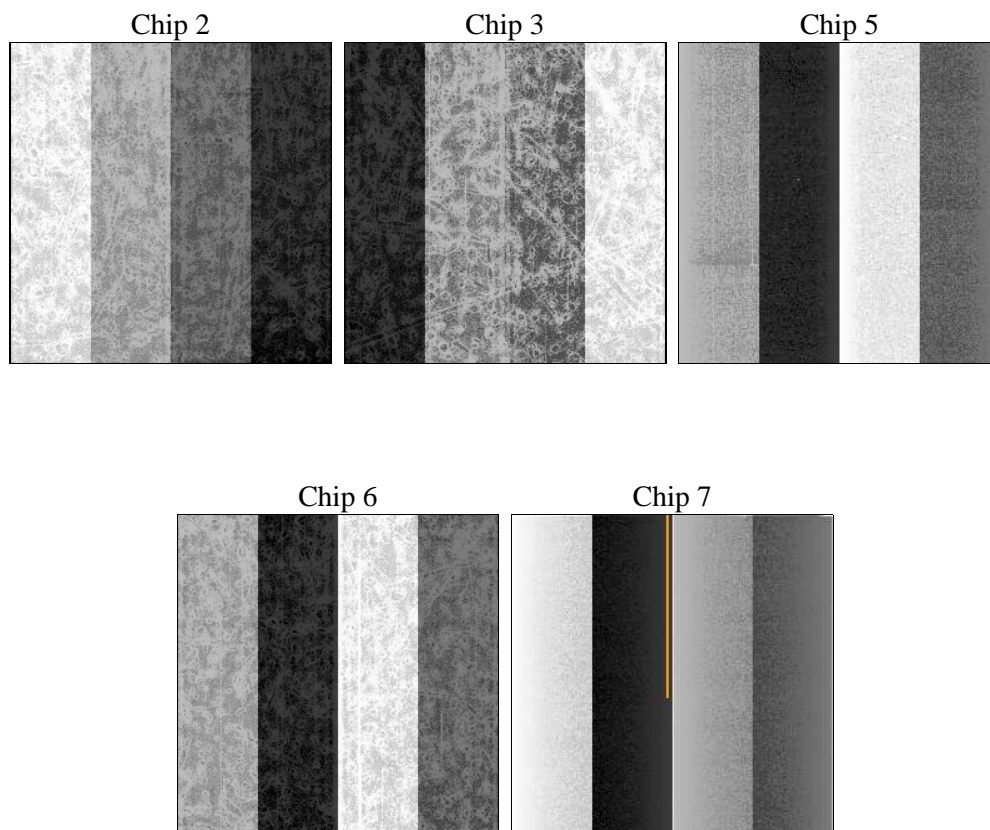
## 2 OBI

### 2.1 OBI

#### 2.1.1 Images



#### 2.1.2 Bias



### 2.1.3 Parameters

obi_num	0	Obi number	sched_exp_time	12595.960000	[s] Scheduled observation exposure time
ascdsver	8.4.5	Processing system revision	ontime	12772.000098228	Sum of GTIs [s]
caldsver	4.4.10	&#160	ontime2	12772.000098228	Sum of GTIs [s]
date	2012-06-19T07:25:03	Date and time of file creation	ontime3	12768.859107971	Sum of GTIs [s]
revision	2	Processing version of data	ontime5	12772.000098228	Sum of GTIs [s]
			ontime6	12765.718137383	Sum of GTIs [s]
			ontime7	12772.000098228	Sum of GTIs [s]
			l1events	653256	Number of level 1 events

### 2.1.4 Events

	ccd 2	ccd 3	ccd 5	ccd 6	ccd 7
level 1 events	115560	111268	172378	118721	135329
rejected events	104300	100560	87929	106402	74964
rejected %	90%	90%	51%	89%	55%

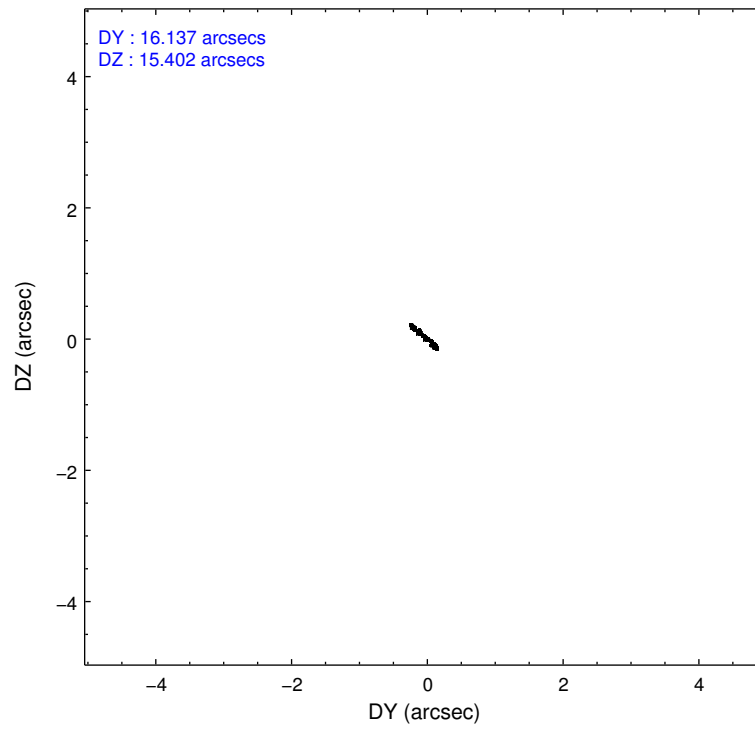
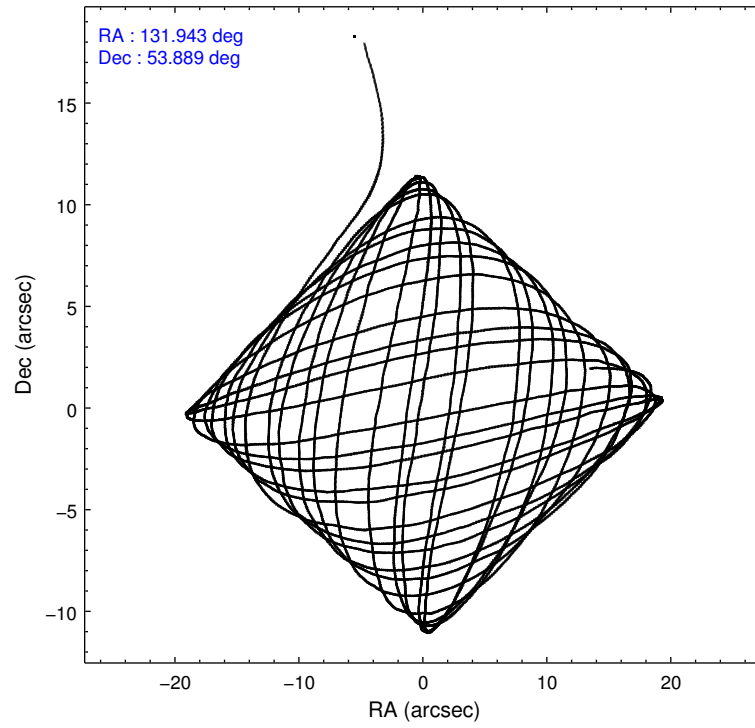
	ccd 2	ccd 3	ccd 5	ccd 6	ccd 7
grade 0 events	4121	3937	11776	4708	6075
	3%	3%	6%	3%	4%
grade 1 events	89	68	563	72	192
	0%	0%	0%	0%	0%
grade 2 events	2803	2447	25140	2786	12936
	2%	2%	14%	2%	9%
grade 3 events	1183	1258	3666	1240	5609
	1%	1%	2%	1%	4%
grade 4 events	1304	1163	3075	1295	5620
	1%	1%	1%	1%	4%
grade 5 events	3980	4703	13615	4778	13964
	3%	4%	7%	4%	10%
grade 6 events	2166	2237	43328	2645	31918
	1%	2%	25%	2%	23%
grade 7 events	99914	95455	71215	101197	59015
	86%	85%	41%	85%	43%

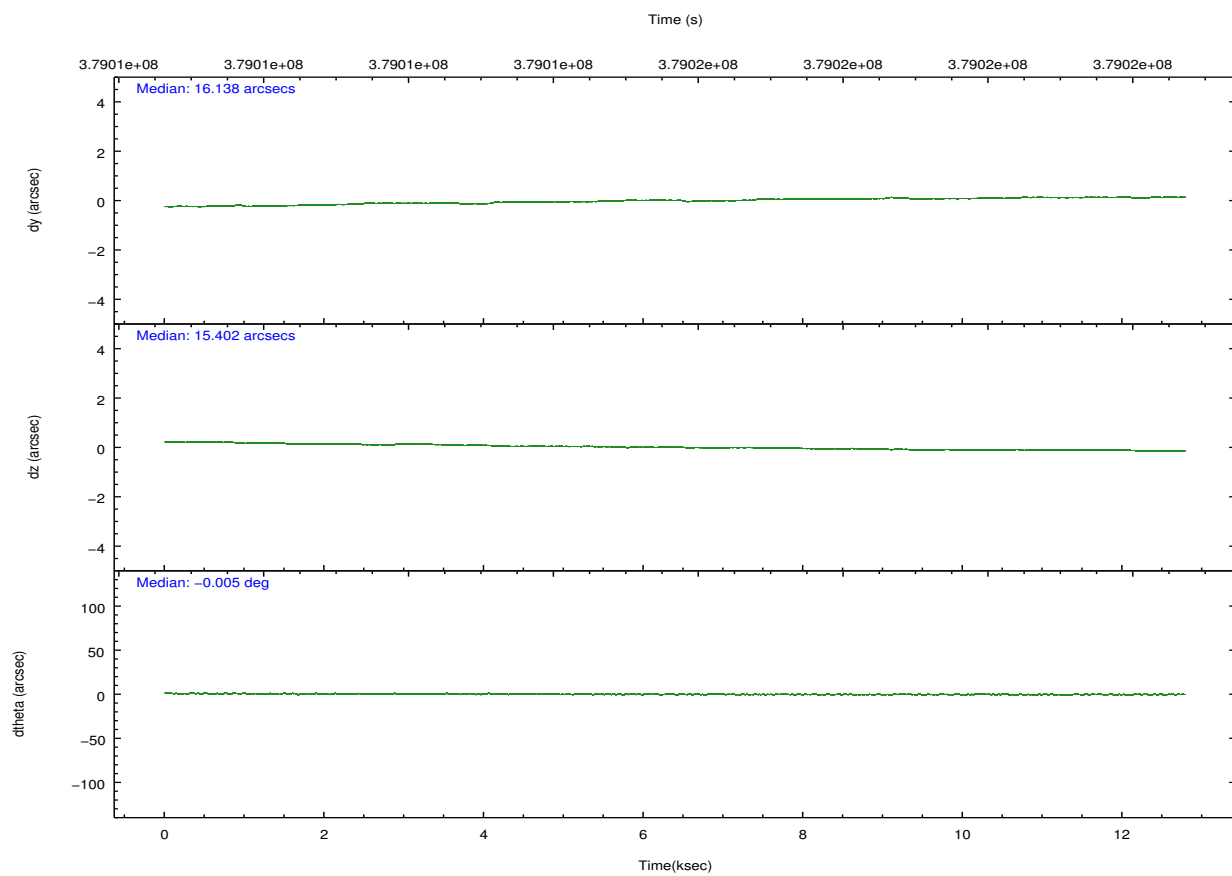
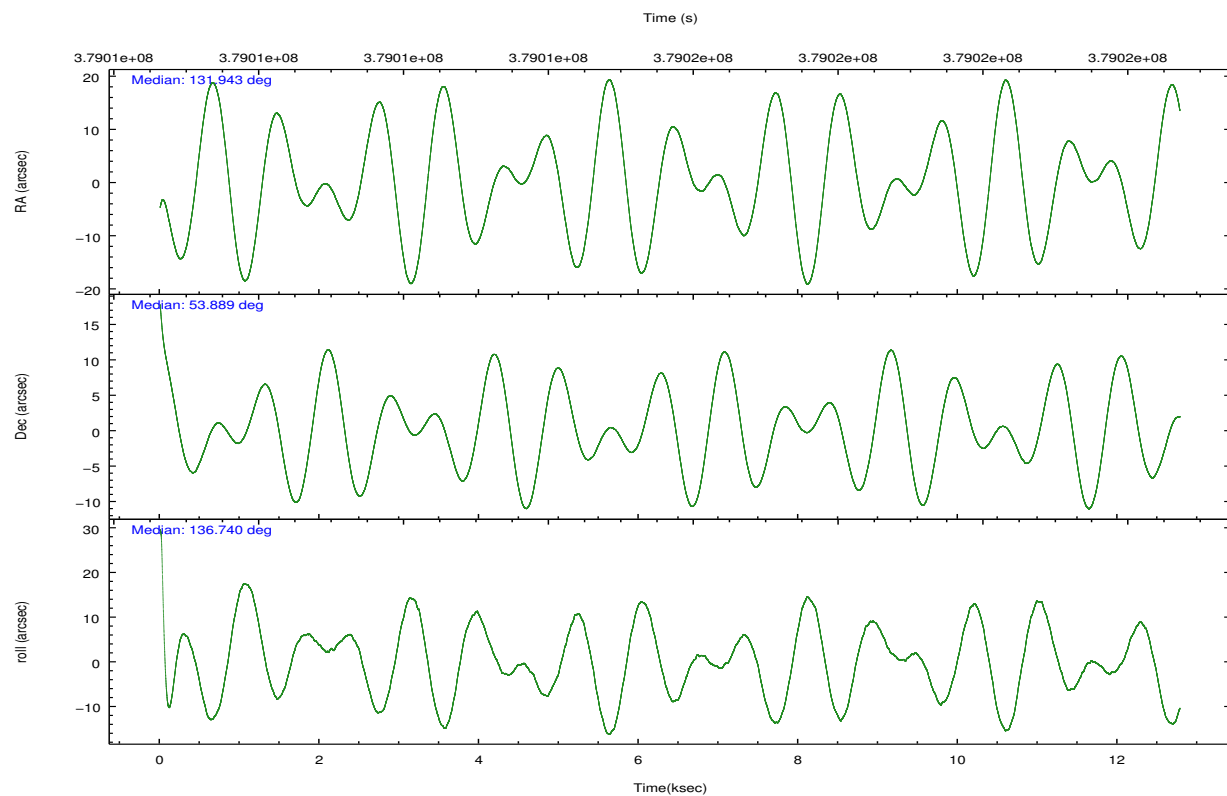


## 2.2 Compared Parameters

Parameter	Planned	Actual	Parameter	Planned	Actual
Instrument	ACIS	ACIS	Obspar format version number	7	7
Detector	ACIS-23567	ACIS-23567	Obspar file type	PREDICTED	ACTUAL
Grating	NONE	NONE	Obspar update status	NONE	UPDATED
Data mode	VFAINT	VFAINT	CCD I0 on	N	N
Observation mode	POINTING	POINTING	CCD I1 on	N	N
[deg] Pointing RA	131.987949	131.9426492718069	CCD I2 on	O1	Y
[deg] Pointing Dec	53.882907	53.88881930833855	CCD I3 on	Y	Y
[deg] Pointing Roll	136.555723	136.7489985754304	CCD S0 on	N	N
[mm] SIM focus pos	-0.684267	-0.6828225247311905	CCD S1 on	Y	Y
[mm] SIM defocus	0	0.001444936568705701	CCD S2 on	Y	Y
[mm] SIM translation stage pos	-190.132523	-190.1400660498719	CCD S3 on	Y	Y
[mm] SIM translation stage offset	0	0.00754346686406393	CCD S4 on	N	N
[s] Observation start time (MET)	379009474.184000	379008285.52773	CCD S5 on	N	N
Observation start date	2010-01-04T16:23:28	2010-01-04T16:04:45	Number of optional ACIS chips dropped	0	0
[s] Observation end time (MET)	379022070.184000	379022287.54094	On-chip summing requested	N	N
Observation end date	2010-01-04T19:53:24	2010-01-04T19:58:07	Subarray requested	NONE	NONE
Read mode	TIMED	TIMED	Alternating exposures requested	N	N
			[s] Primary exposure time	0.000000	3.1

## 2.3 Aspect



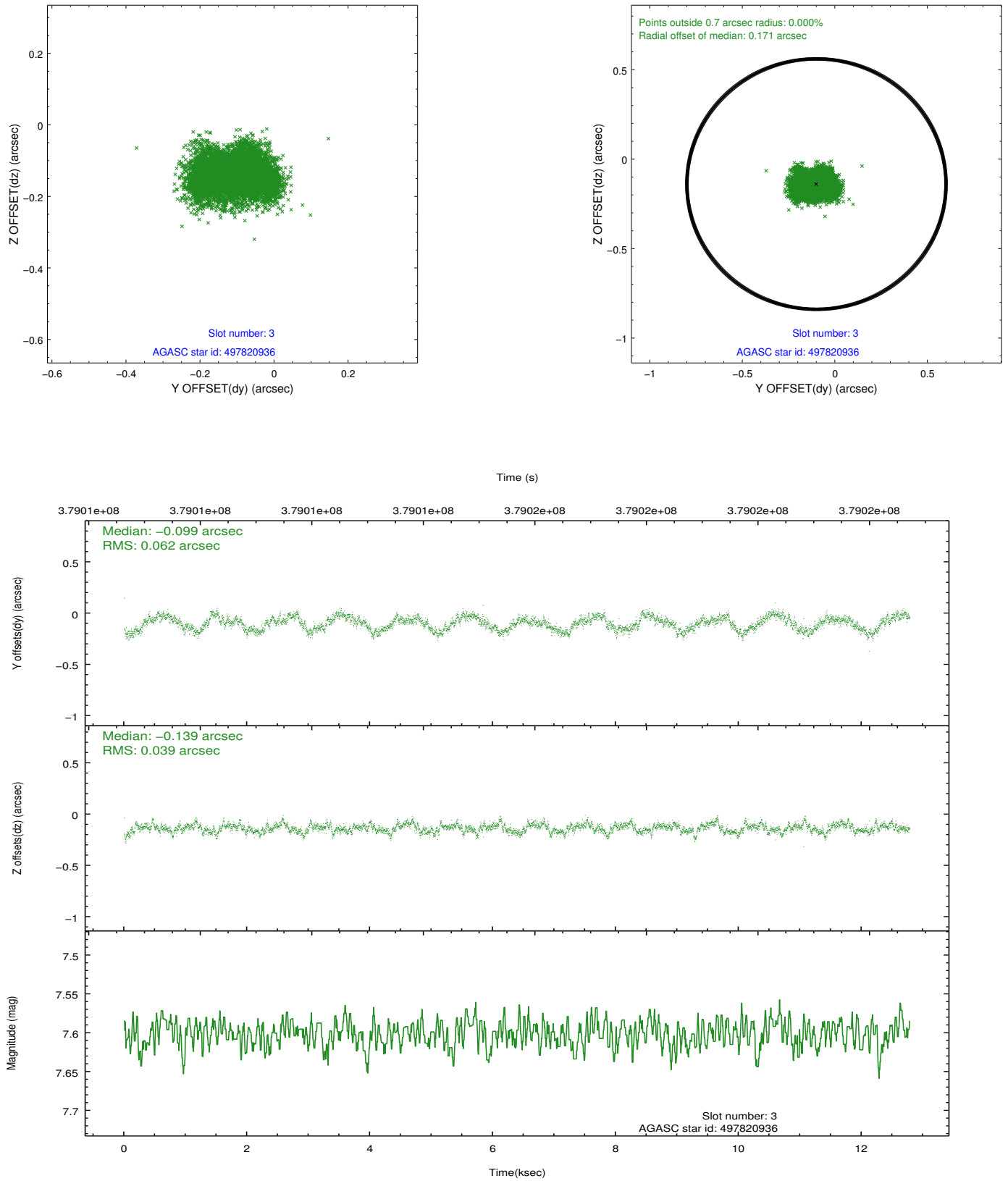


### Slot Statistics

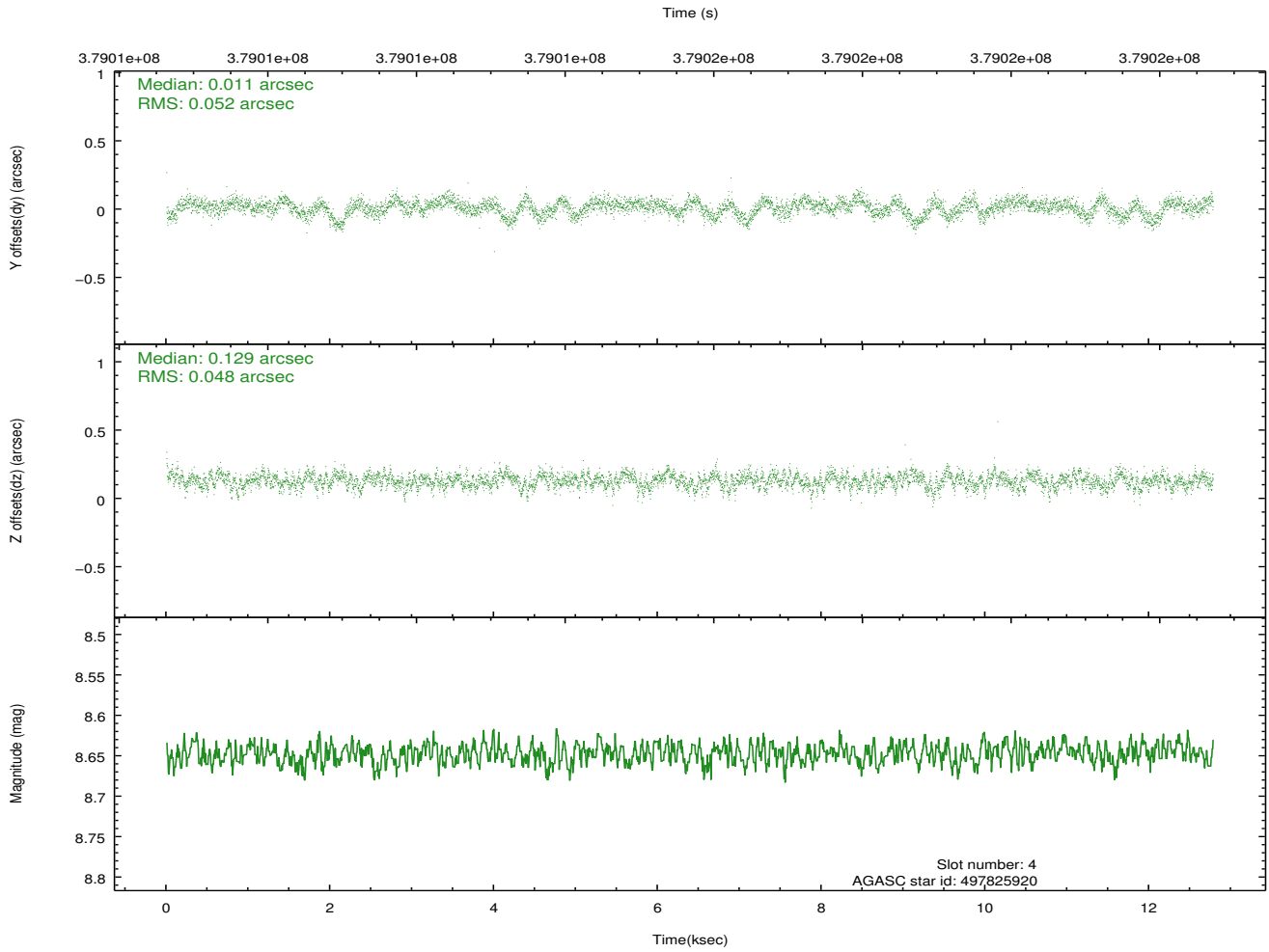
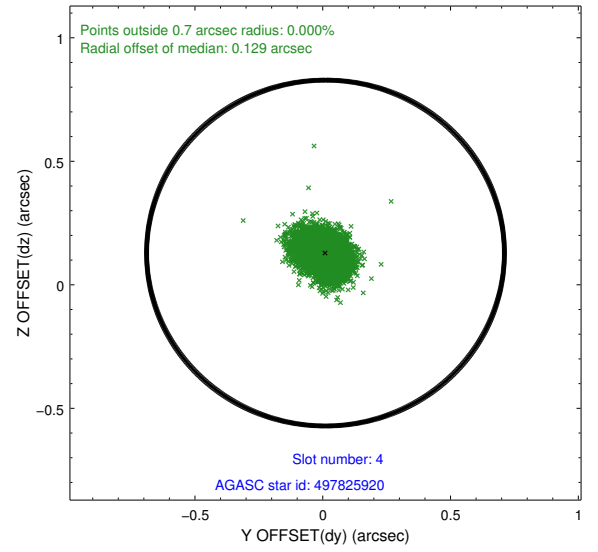
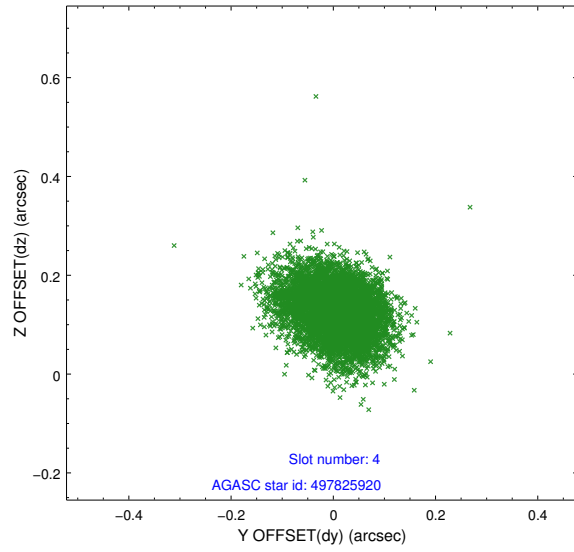
slot	status	id	mag	n_pts	med_dy	med_dz	dr1	dr2	ra	dec	mean_y	mean_z
0	FID	ACIS-S-2	6.95	3117	-0.100	-0.021	0.007	0.011	0.000000	0.000000	-769.20	-1736.84
1	FID	ACIS-S-4	7.03	3117	0.188	0.054	0.005	0.010	0.000000	0.000000	2144.17	171.36
2	FID	ACIS-S-5	7.06	3116	-0.118	-0.024	0.007	0.011	0.000000	0.000000	-1821.59	165.34
3	GUIDE	497820936	7.60	6231	-0.099	-0.139	0.079	0.123	131.493181	53.916367	847.10	631.44
4	GUIDE	497825920	8.65	6224	0.011	0.129	0.074	0.123	132.363960	54.104670	-25.17	-1126.50
5	GUIDE	497826112	9.08	6215	0.059	-0.011	0.095	0.155	131.956534	54.397420	1322.11	-1299.38
6	GUIDE	497827576	9.85	6204	0.024	0.060	0.134	0.224	132.551306	53.839646	-972.12	-713.03
7	GUIDE	497828720	9.46	6196	0.011	-0.035	0.123	0.201	131.913593	53.354801	-1191.40	1490.01

## 2.4 Star Slots

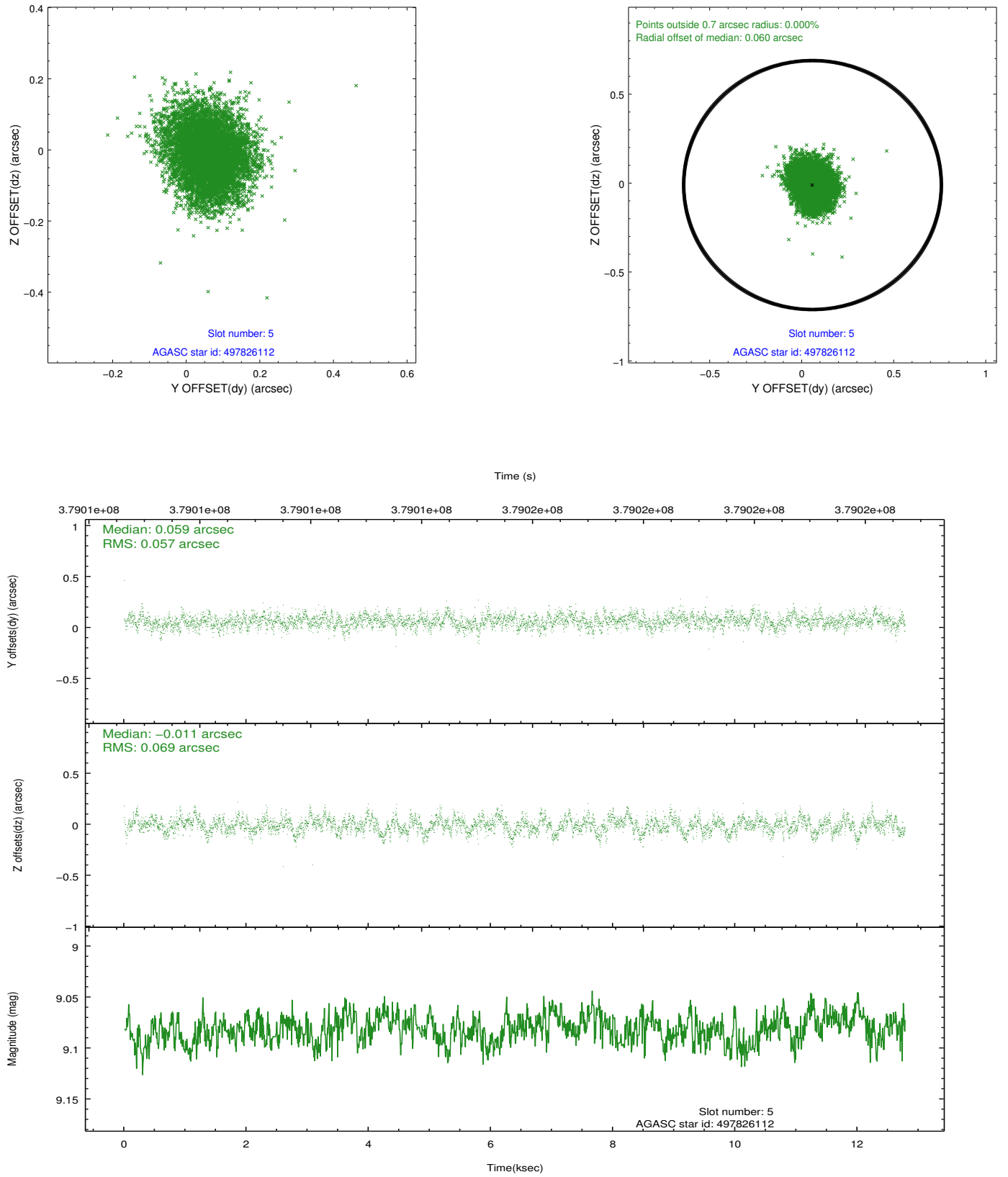
### 2.4.1 Slot 3



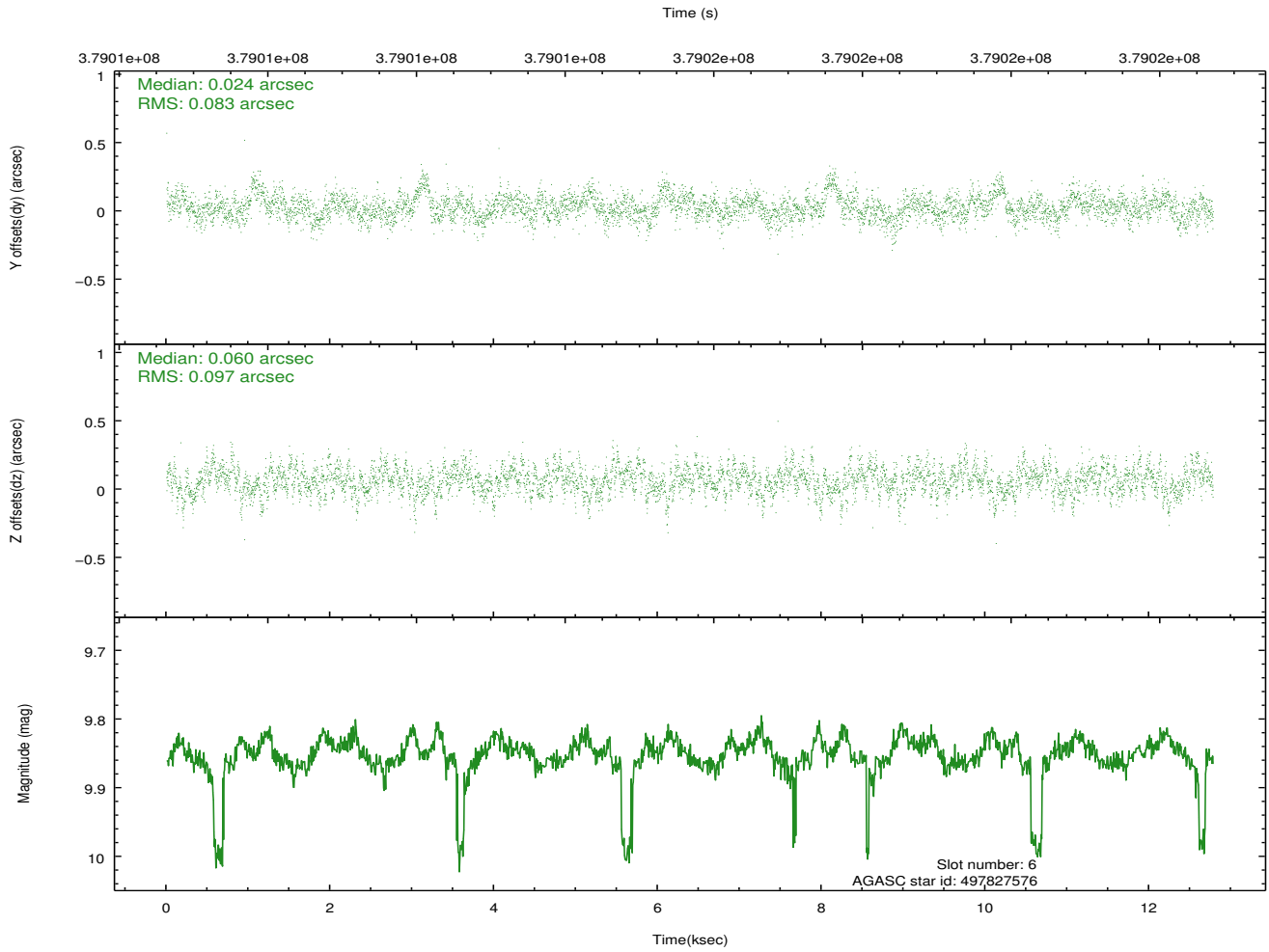
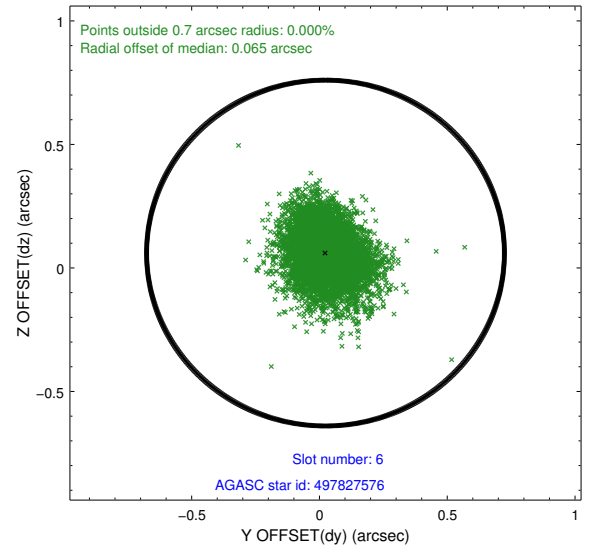
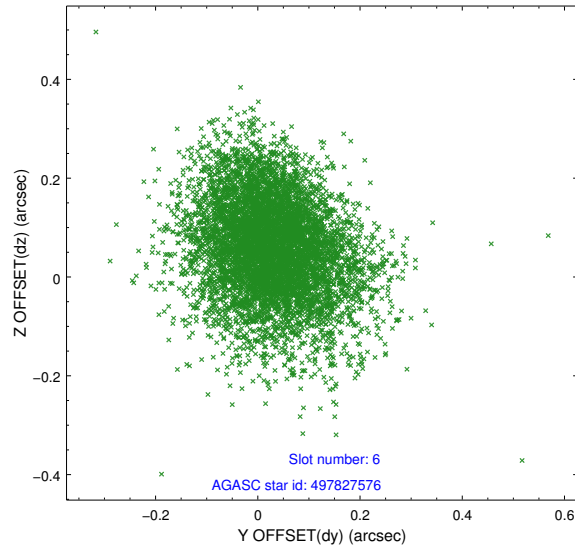
## 2.4.2 Slot 4



### 2.4.3 Slot 5

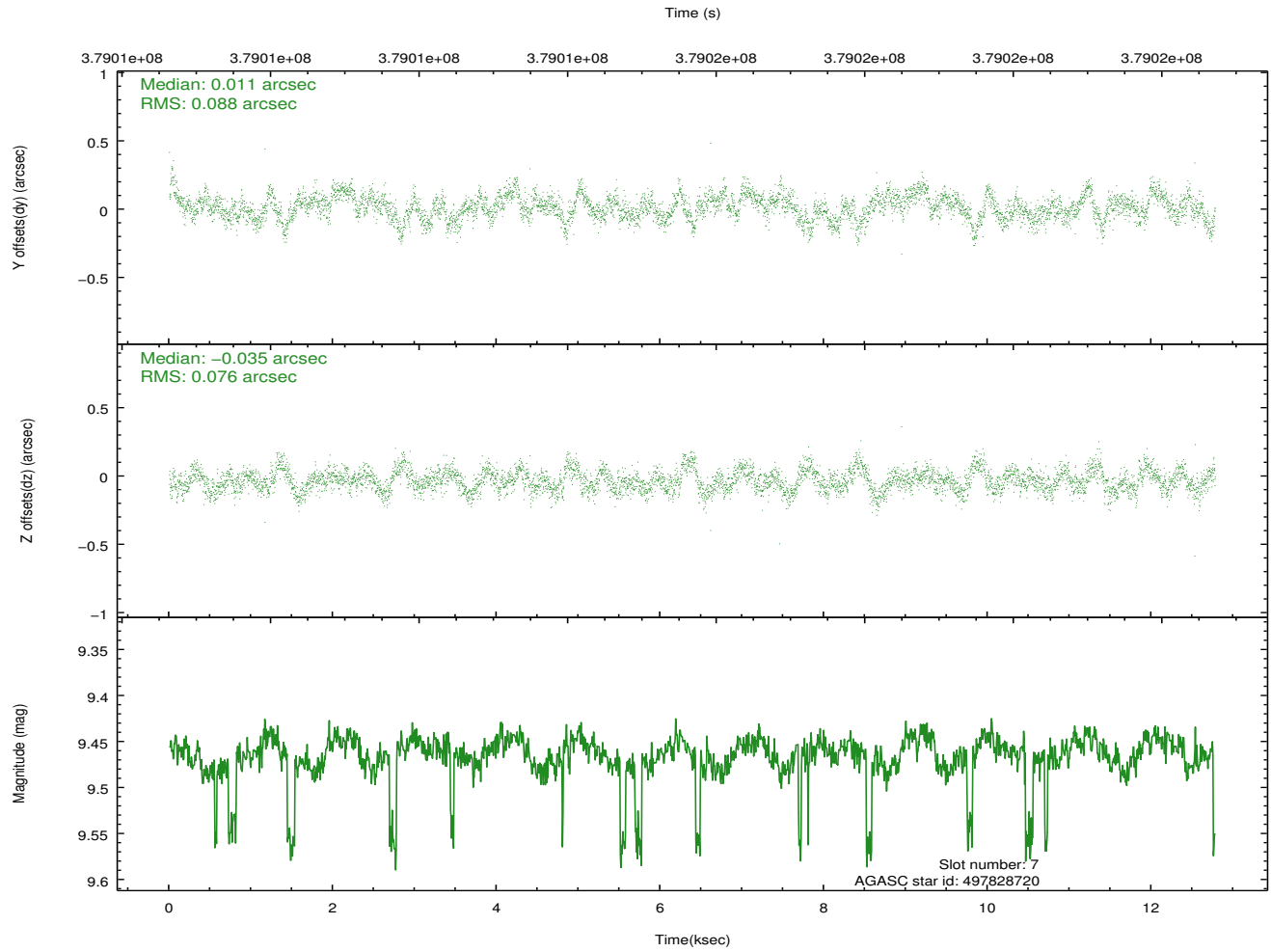
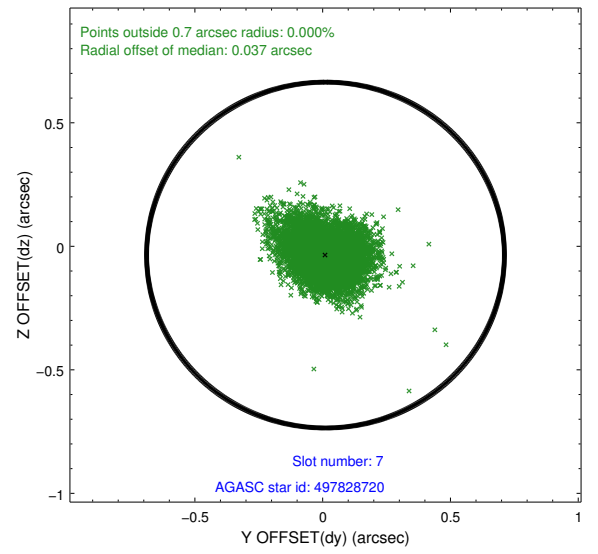
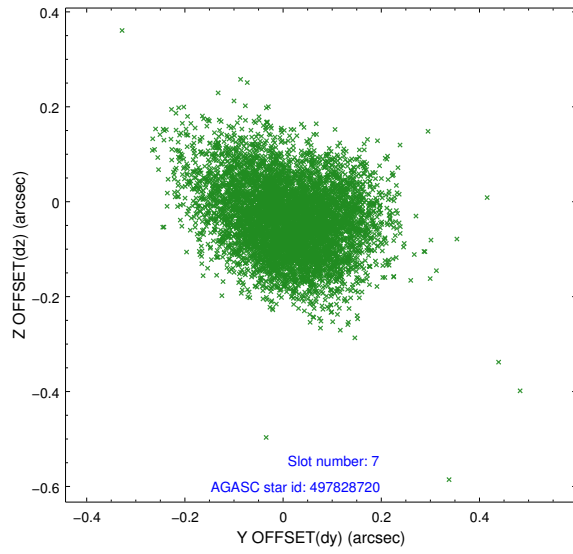


## 2.4.4 Slot 6



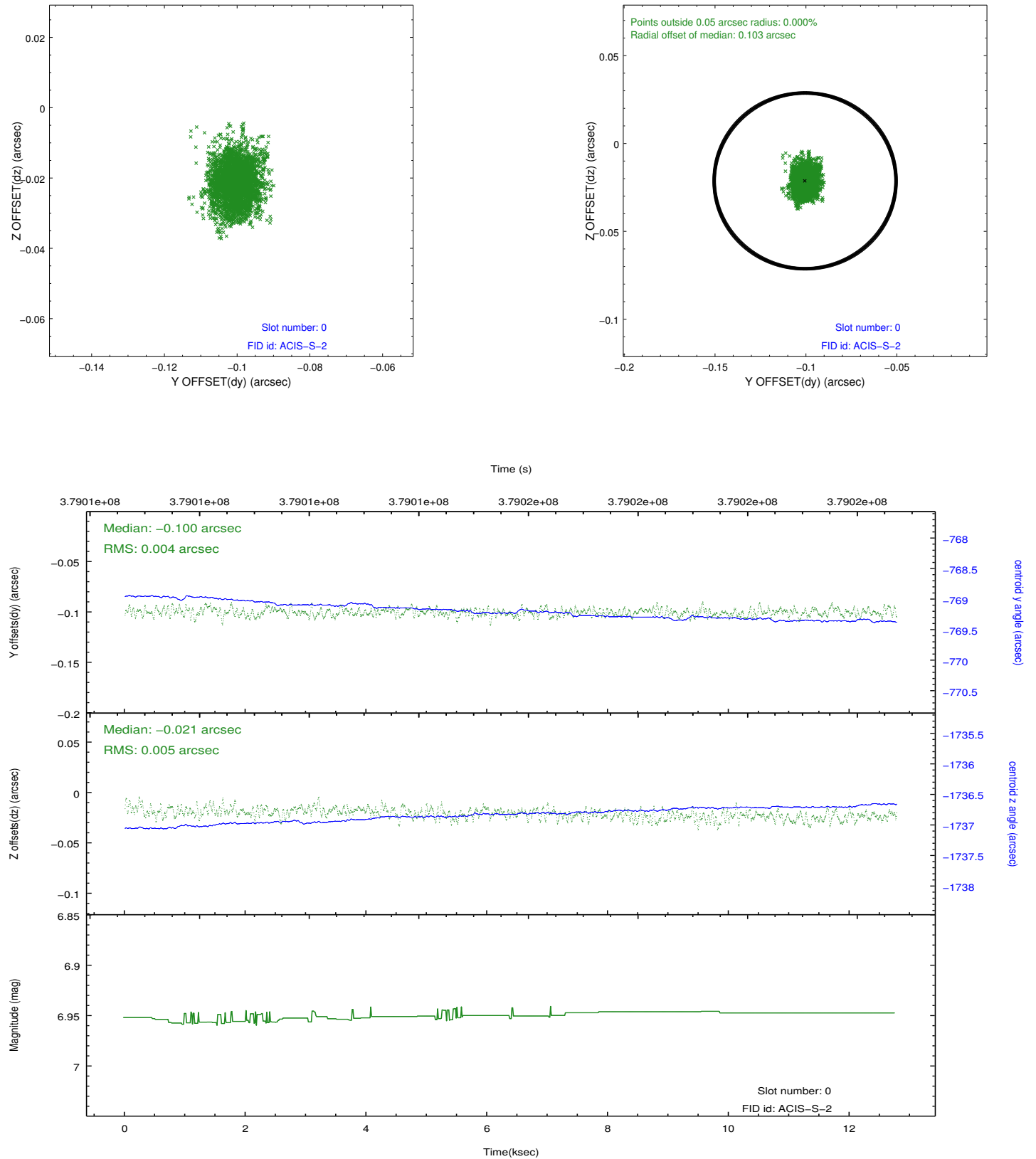


## 2.4.5 Slot 7

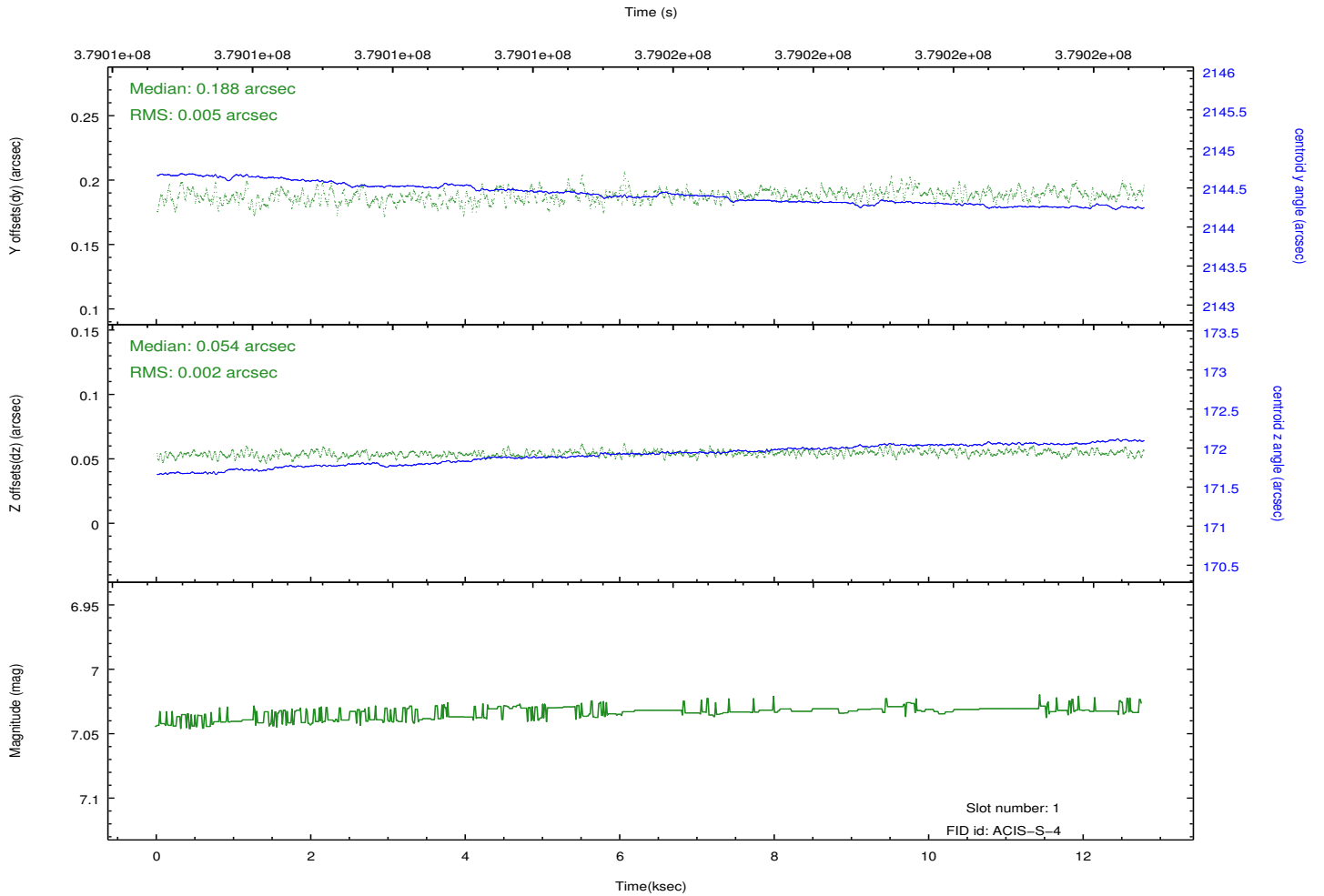
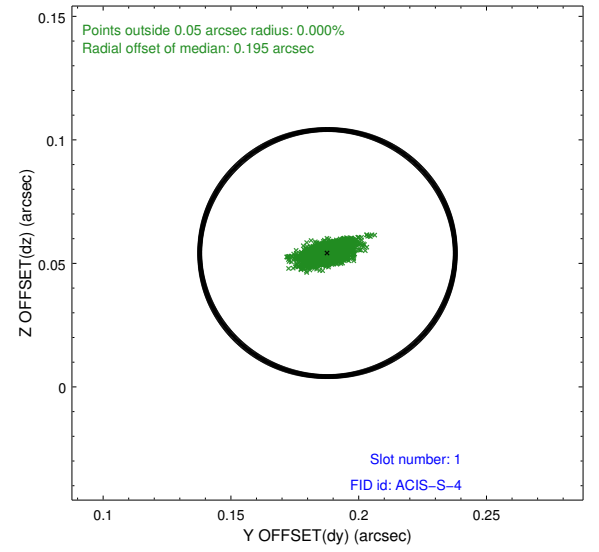
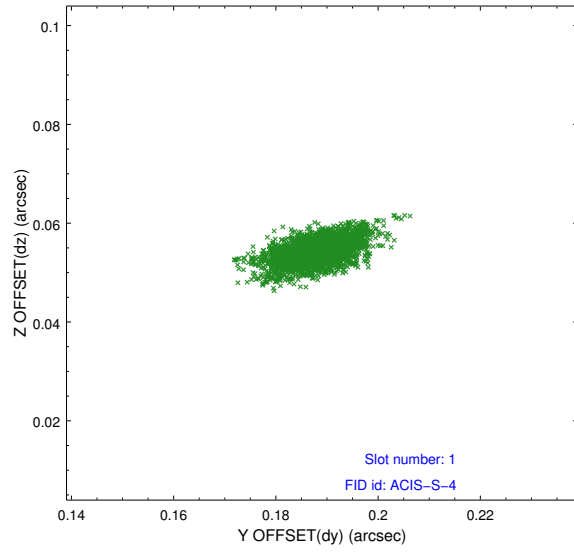


## 2.5 FID Slots

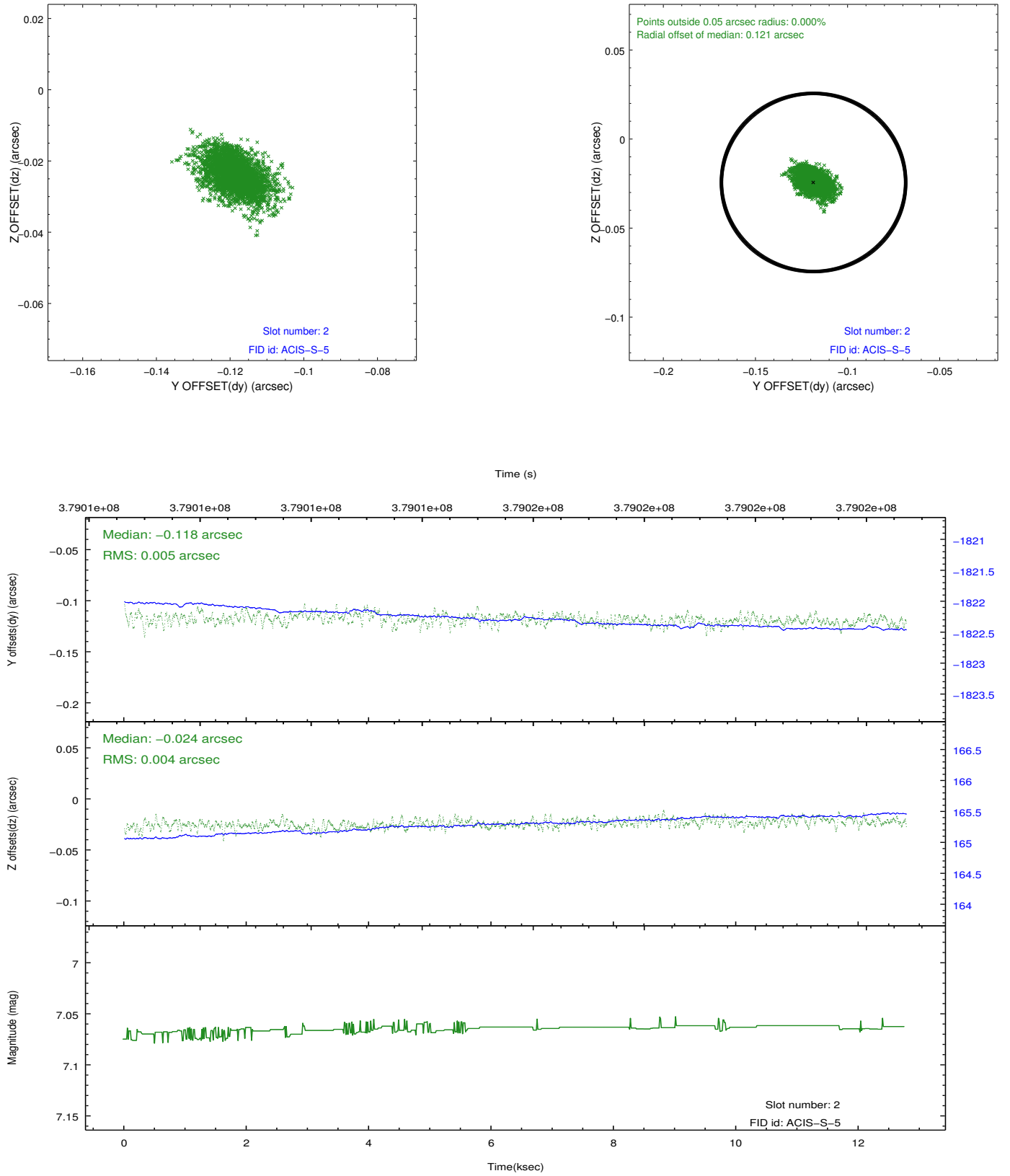
### 2.5.1 Slot 0



## 2.5.2 Slot 1



### 2.5.3 Slot 2



## **A Summary**

### **A.1 Status**

V&V Scientist	Jen Lauer
V&V Date (YYYY-MM-DD)	2012.06.25
V&V Edition	1
V&V Disposition and Status	OK
V&V Charge Time	12.772000098228

### **A.2 Comments**