

V&V Reference Report

L2 ASCDS Version : 8.4.4

Observation 10749 - L2 Version 2
Chandra X-Ray Center

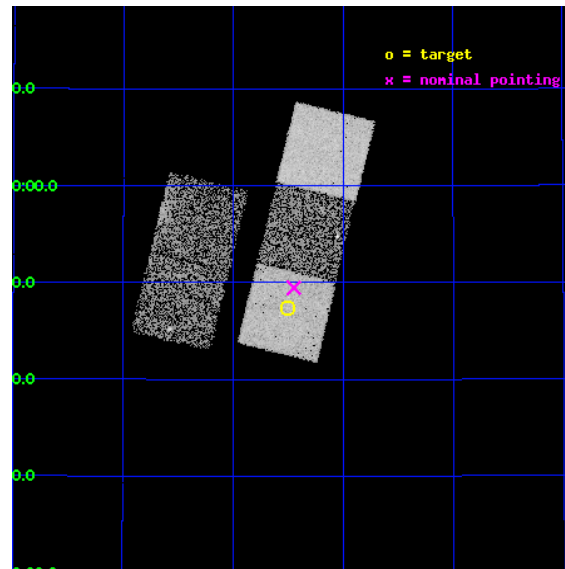
L2 Processing Date : May 28 2012

Contents

1	Front	2
2	OBI	3
2.1	OBI	3
2.1.1	Images	3
2.1.2	Bias	3
2.1.3	Parameters	4
2.1.4	Events	4
2.2	Compared Parameters	5
2.3	Aspect	6
2.4	Star Slots	9
2.4.1	Slot 3	9
2.4.2	Slot 4	10
2.4.3	Slot 5	11
2.4.4	Slot 6	12
2.4.5	Slot 7	13
2.5	FID Slots	14
2.5.1	Slot 0	14
2.5.2	Slot 1	15
2.5.3	Slot 2	16
A	Summary	17
A.1	Status	17
A.2	Comments	17

1 Front

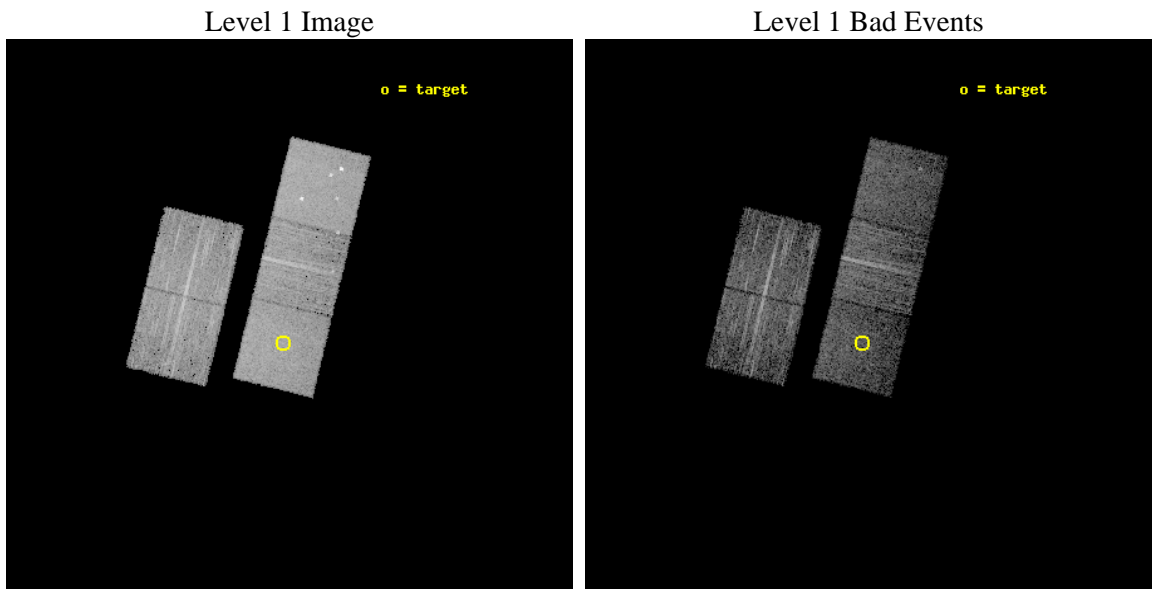
seq_num	900896	Sequence number
obs_id	10749	Observation id
title	The Origin and Evolution of Fossil Groups	Proposal title
observer	Professor Gordon Garmire	Principal investigator
object	SDSS J1039+3947	Source name
dtcycle	0	
cycle	P	events from which exps? Prim/Second/Both
ra_targ	159.876667	Observer's specified target RA [deg]
dec_targ	39.788611	Observer's specified target Dec [deg]
ra_nom	159.86202871037	Nominal RA [deg]
dec_nom	39.824422051804	Nominal Dec [deg]
roll_nom	103.69201493947	Nominal Roll [deg]
revision	2	Processing version of data
ontime	5161.5000396967	Sum of GTIs [s]
livetime	5094.061241837	Livetime [s]
ontime2	5161.5000396967	Sum of GTIs [s]
ontime3	5161.5000396967	Sum of GTIs [s]
ontime5	5161.5000396967	Sum of GTIs [s]
ontime6	5161.5000396967	Sum of GTIs [s]
ontime7	5161.5000396967	Sum of GTIs [s]
l2events	61893	Number of level 2 events



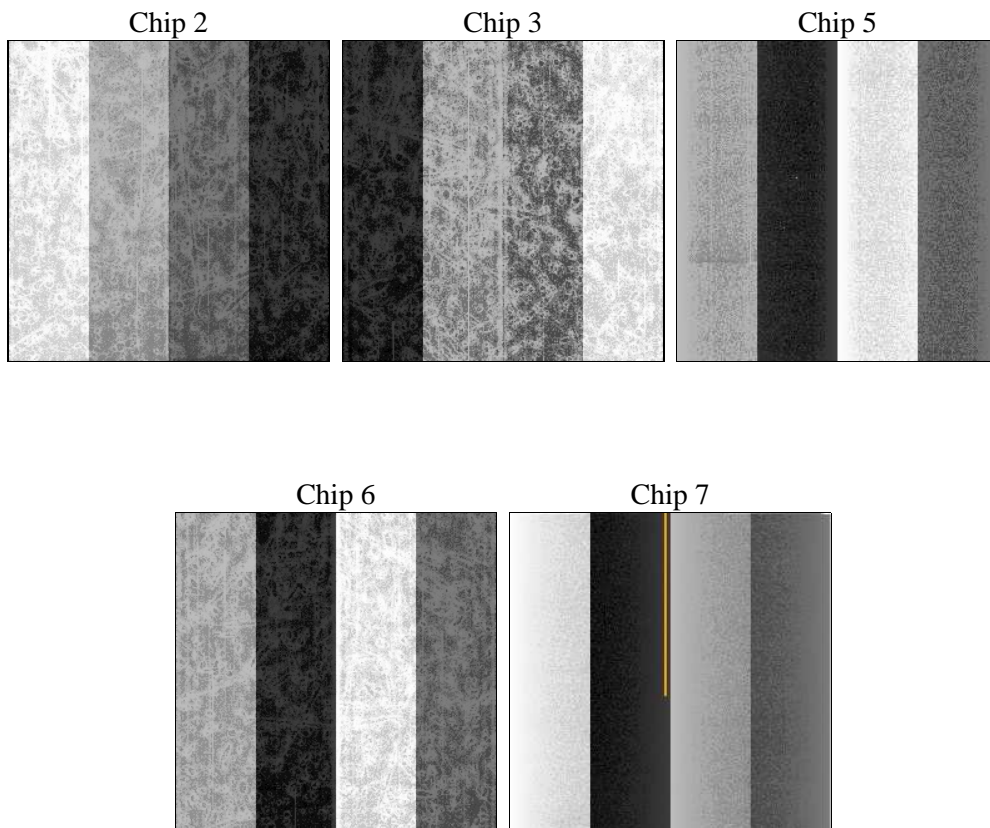
2 OBI

2.1 OBI

2.1.1 Images



2.1.2 Bias



2.1.3 Parameters

obi_num	0	Obi number	sched_exp_time	5000.000000	[s] Scheduled observation exposure time
ascdsver	8.4.4	Processing system revision	ontime	5161.5000396967	Sum of GTIs [s]
caldsver	4.4.9	 	ontime2	5161.5000396967	Sum of GTIs [s]
date	2012-05-29T01:25:40	Date and time of file creation	ontime3	5161.5000396967	Sum of GTIs [s]
revision	2	Processing version of data	ontime5	5161.5000396967	Sum of GTIs [s]
			ontime6	5161.5000396967	Sum of GTIs [s]
			ontime7	5161.5000396967	Sum of GTIs [s]
			l1events	251944	Number of level 1 events

2.1.4 Events

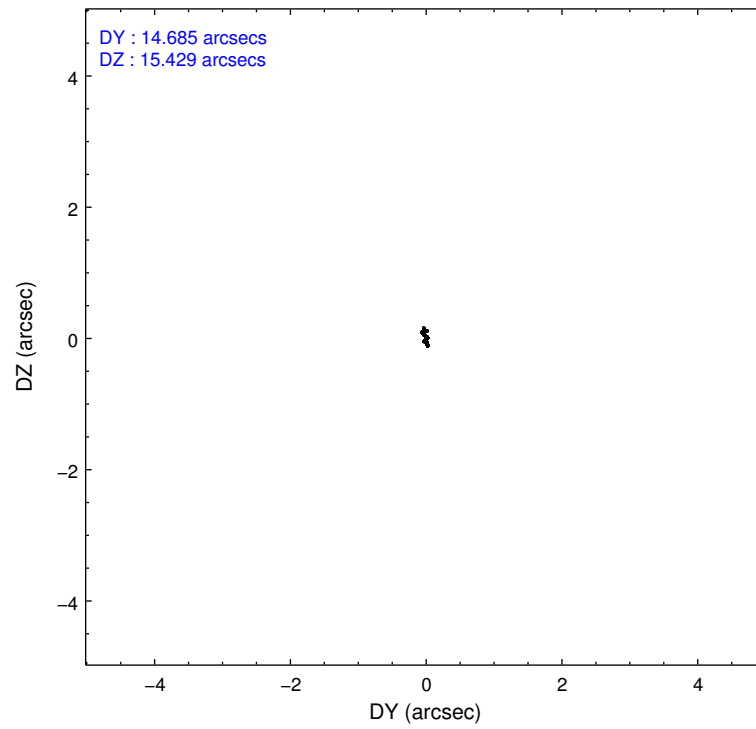
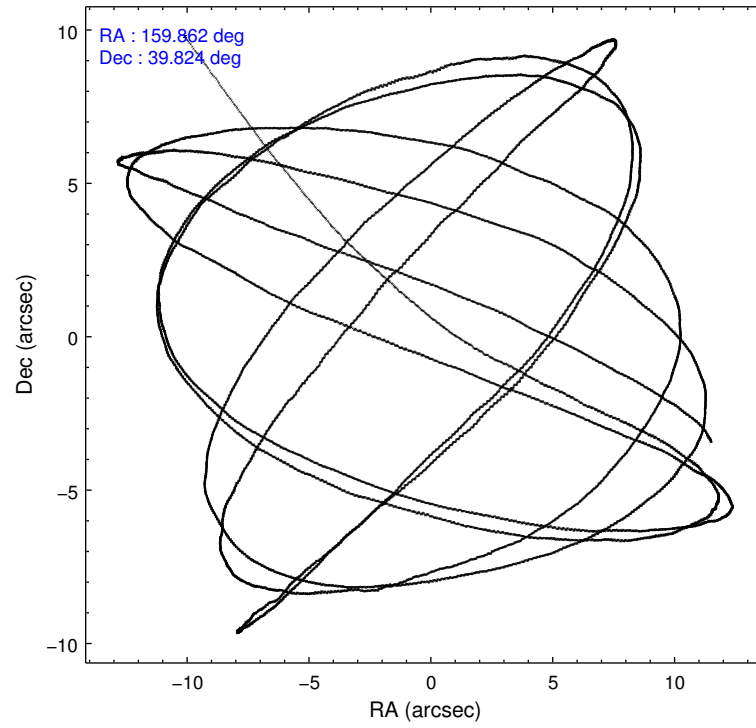
	ccd 2	ccd 3	ccd 5	ccd 6	ccd 7
level 1 events	46587	43114	65509	45679	51055
rejected events	41830	38878	32914	40910	28597
rejected %	89%	90%	50%	89%	56%

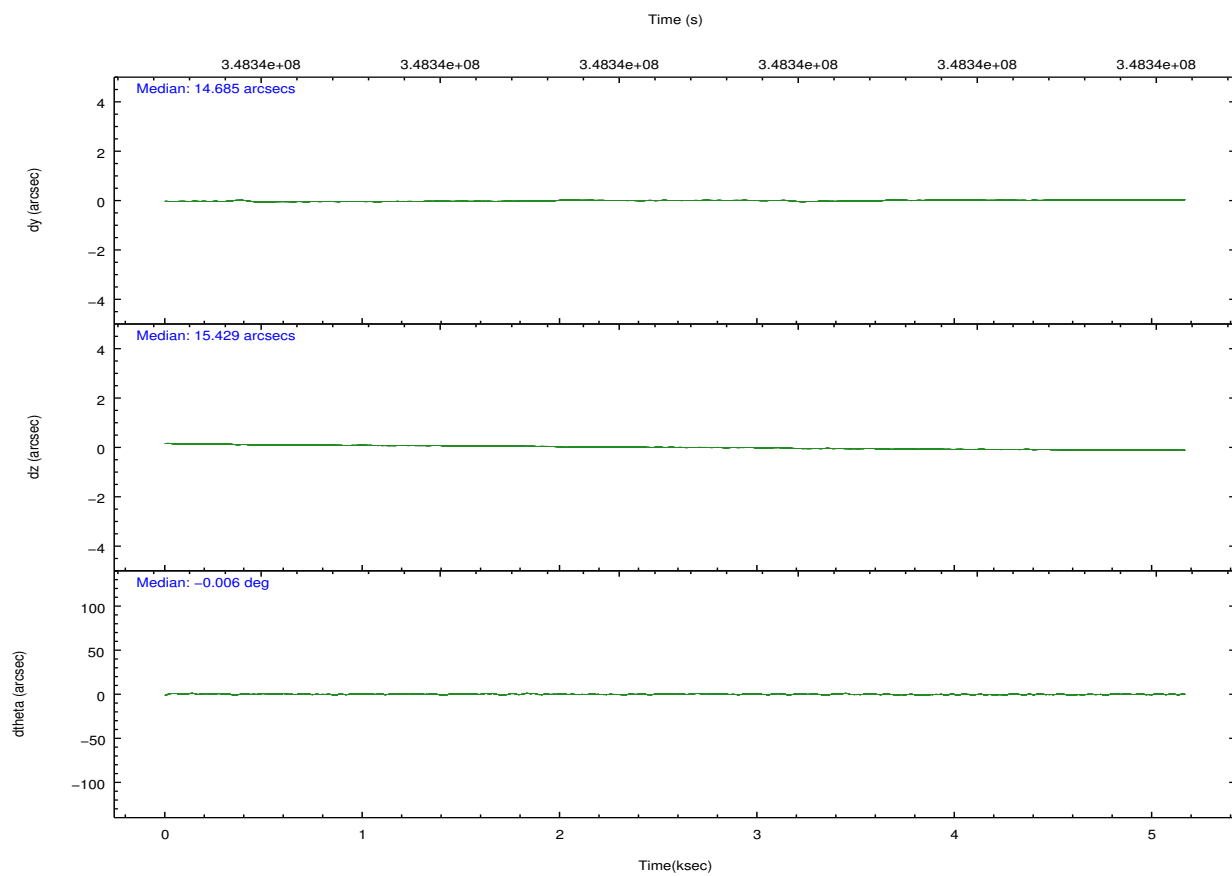
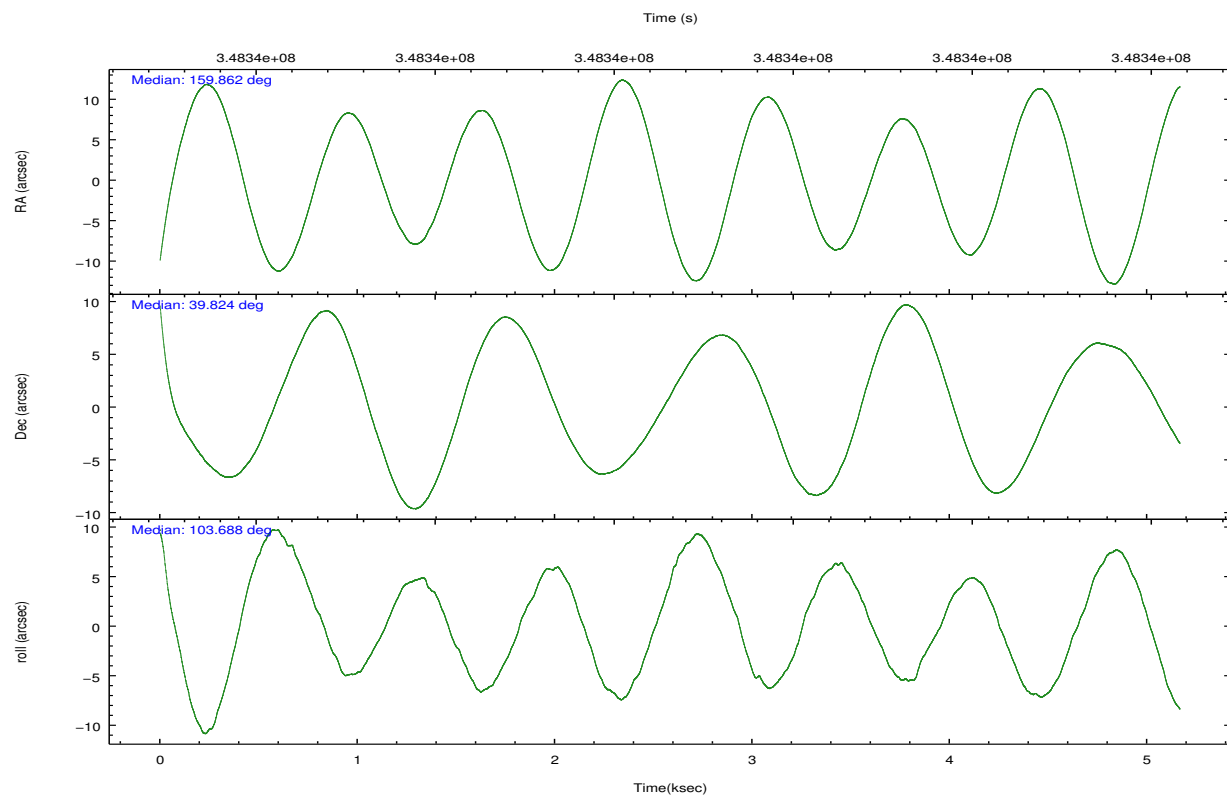
	ccd 2	ccd 3	ccd 5	ccd 6	ccd 7
grade 0 events	2097	1592	4615	1871	2222
	4%	3%	7%	4%	4%
grade 1 events	34	20	288	22	58
	0%	0%	0%	0%	0%
grade 2 events	1061	983	10599	1104	4894
	2%	2%	16%	2%	9%
grade 3 events	502	484	1338	502	2098
	1%	1%	2%	1%	4%
grade 4 events	469	477	1248	511	1967
	1%	1%	1%	1%	3%
grade 5 events	1506	1742	4840	1872	5323
	3%	4%	7%	4%	10%
grade 6 events	812	882	16299	1024	12283
	1%	2%	24%	2%	24%
grade 7 events	40106	36934	26282	38773	22210
	86%	85%	40%	84%	43%

2.2 Compared Parameters

Parameter	Planned	Actual	Parameter	Planned	Actual
Instrument	ACIS	ACIS	Obspar format version number	7	7
Detector	ACIS-23567	ACIS-23567	Obspar file type	PREDICTED	ACTUAL
Grating	NONE	NONE	Obspar update status	NONE	UPDATED
Data mode	VFAINT	VFAINT	CCD I0 on	N	N
Observation mode	POINTING	POINTING	CCD I1 on	N	N
[deg] Pointing RA	159.886957	159.8620287103726	CCD I2 on	O1	Y
[deg] Pointing Dec	39.804904	39.824422051804	CCD I3 on	O2	Y
[deg] Pointing Roll	103.519410	103.6920149394714	CCD S0 on	N	N
[mm] SIM focus pos	-0.684267	-0.6828225247311905	CCD S1 on	Y	Y
[mm] SIM defocus	0	0.001444936568705701	CCD S2 on	Y	Y
[mm] SIM translation stage pos	-190.132523	-190.1400660498719	CCD S3 on	Y	Y
[mm] SIM translation stage offset	0	0.00754346686406393	CCD S4 on	N	N
[s] Observation start time (MET)	348334890.184000	348333784.98097	CCD S5 on	N	N
Observation start date	2009-01-14T15:40:24	2009-01-14T15:23:04	Number of optional ACIS chips dropped	0	0
[s] Observation end time (MET)	348339890.184000	348340504.8813	On-chip summing requested	N	N
Observation end date	2009-01-14T17:03:44	2009-01-14T17:15:04	Subarray requested	NONE	NONE
Read mode	TIMED	TIMED	Alternating exposures requested	N	N
			[s] Primary exposure time	0.000000	3.1

2.3 Aspect



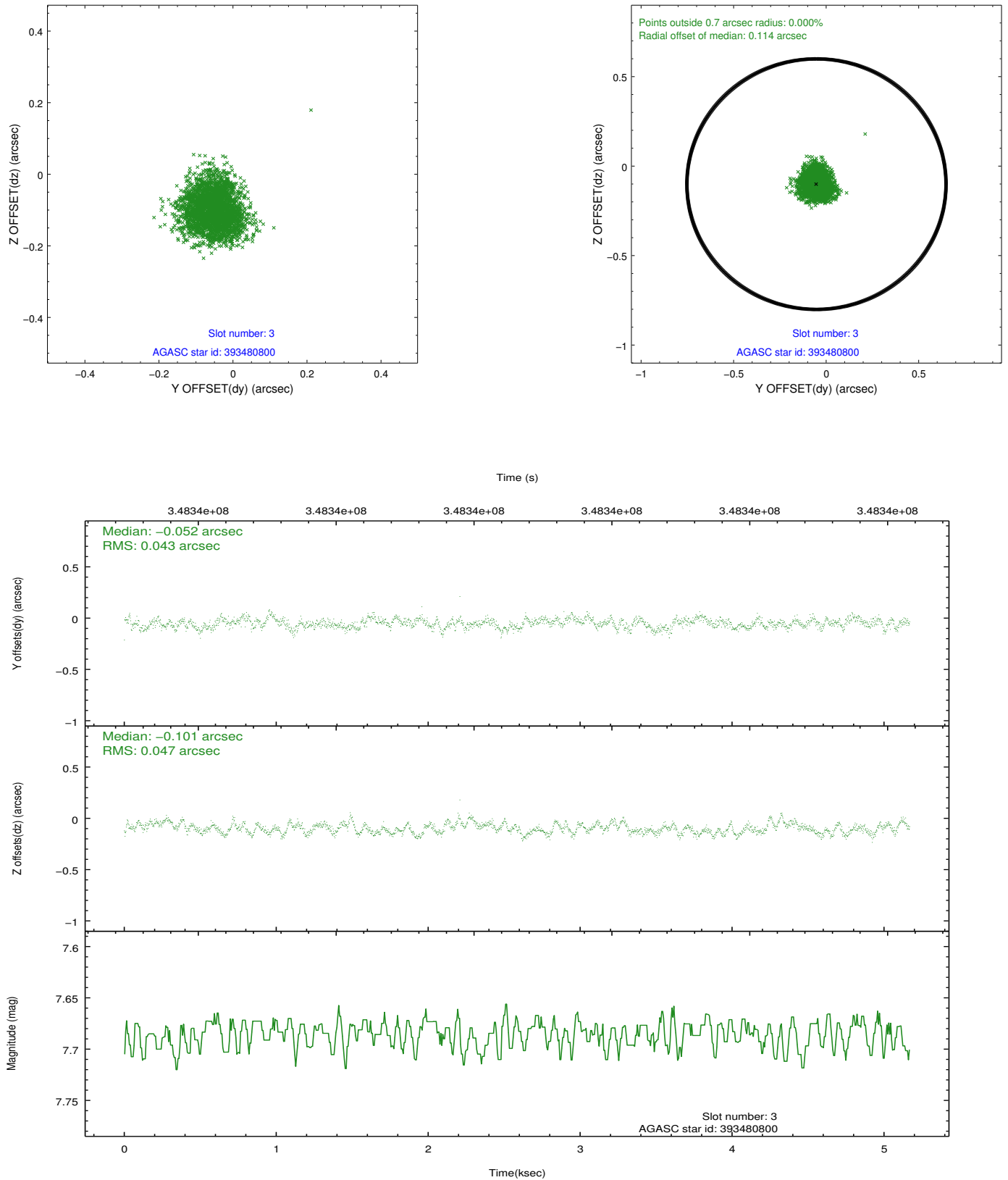


Slot Statistics

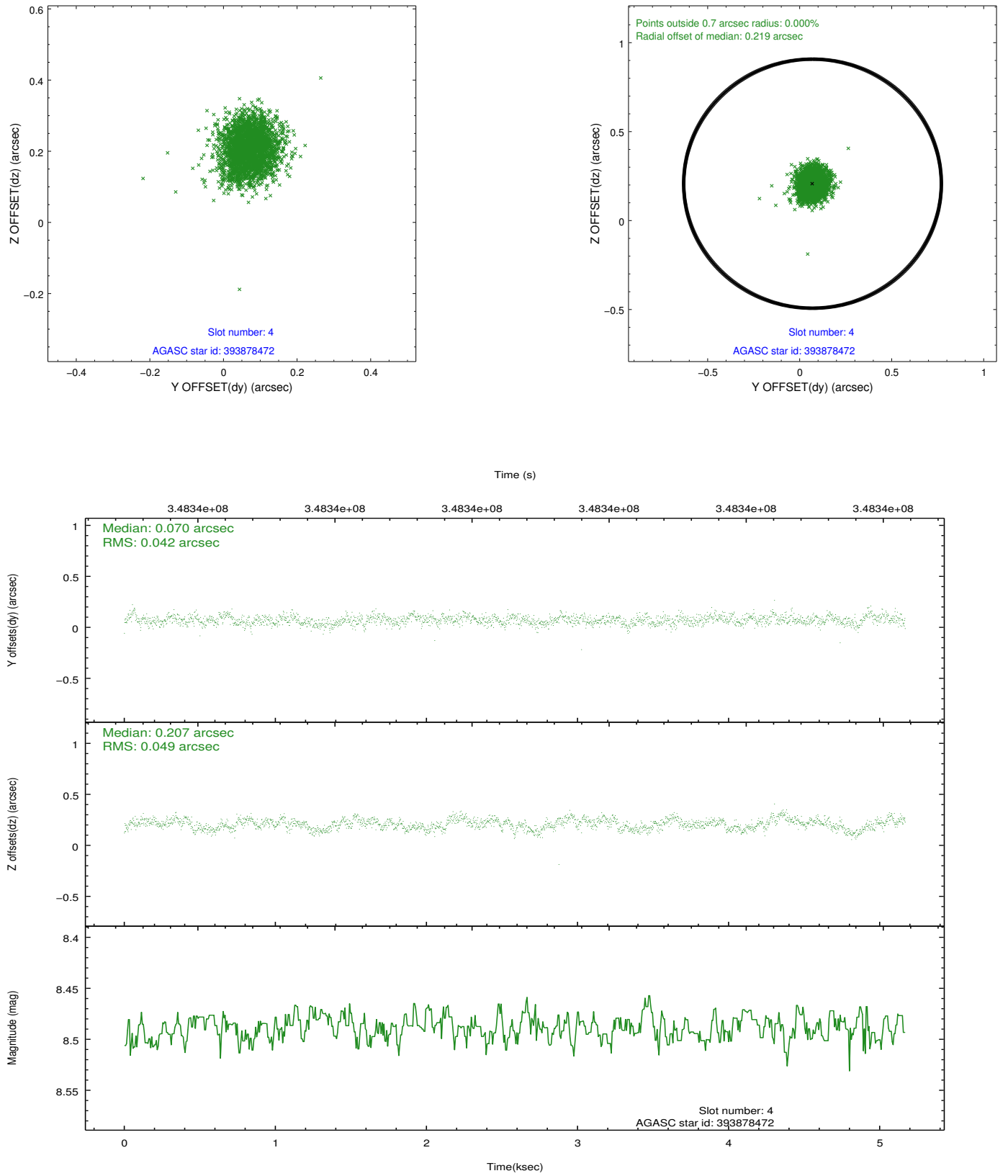
slot	status	id	mag	n_pts	med_dy	med_dz	dr1	dr2	ra	dec	mean_y	mean_z
0	FID	ACIS-S-1	6.99	1261	0.044	-0.036	0.007	0.014	0.000000	0.000000	928.46	-1732.48
1	FID	ACIS-S-5	7.03	1261	-0.124	0.019	0.006	0.011	0.000000	0.000000	-1820.07	163.90
2	FID	ACIS-S-6	7.14	1261	0.058	0.029	0.007	0.012	0.000000	0.000000	392.74	809.21
3	GUIDE	393480800	7.69	2520	-0.052	-0.101	0.070	0.107	159.955558	39.404672	-1445.19	151.43
4	GUIDE	393878472	8.49	2519	0.070	0.207	0.067	0.109	159.653339	40.322119	1960.90	188.70
5	GUIDE	394405296	8.73	2521	-0.131	-0.117	0.096	0.154	160.050441	40.278361	1553.65	-834.65
6	GUIDE	394408776	9.28	2514	-0.049	-0.133	0.111	0.185	160.059246	40.119309	990.50	-724.18
7	GUIDE	394409120	10.17	2518	0.160	0.143	0.183	0.290	160.577684	39.318574	-2144.01	-1462.75

2.4 Star Slots

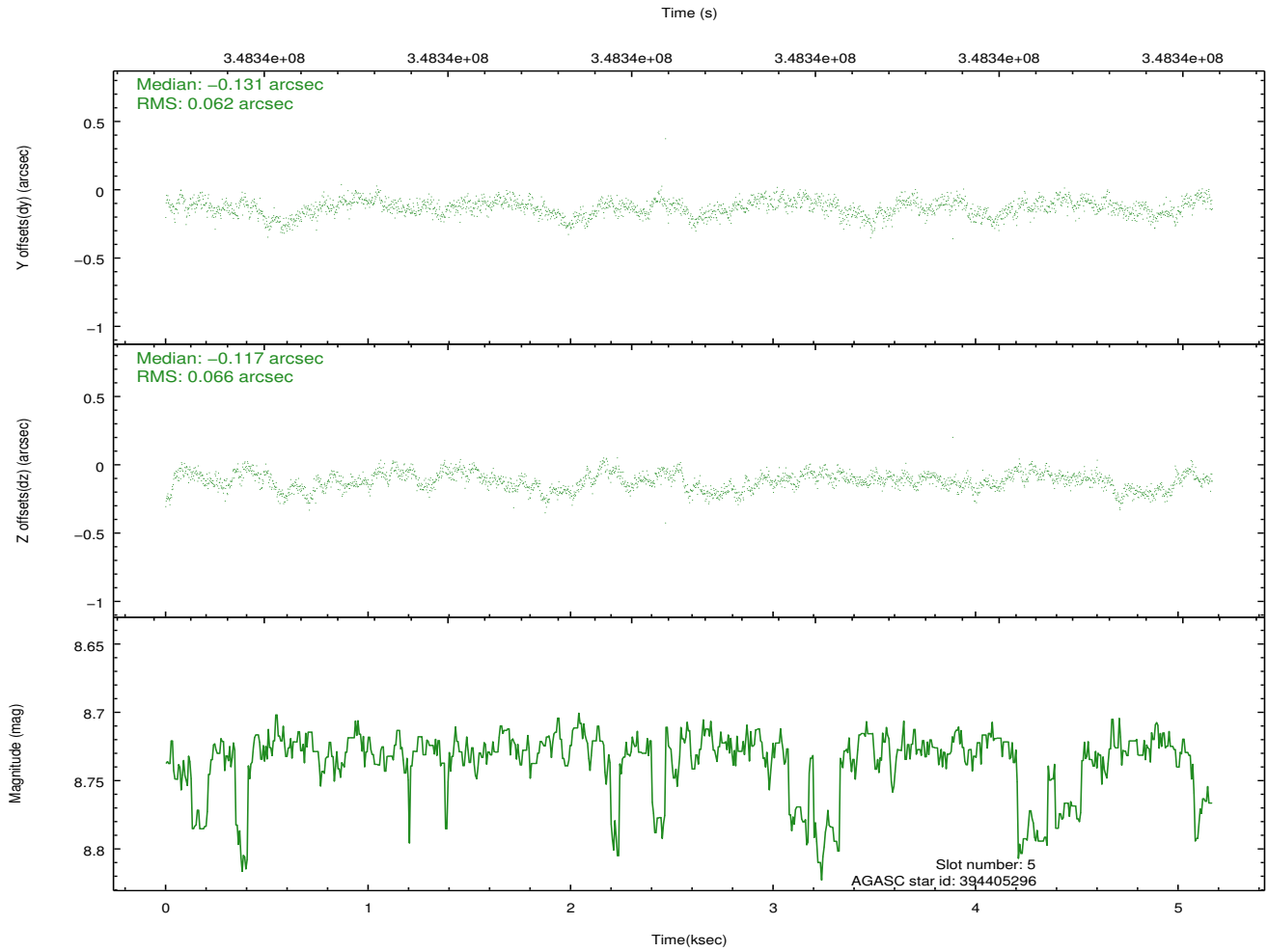
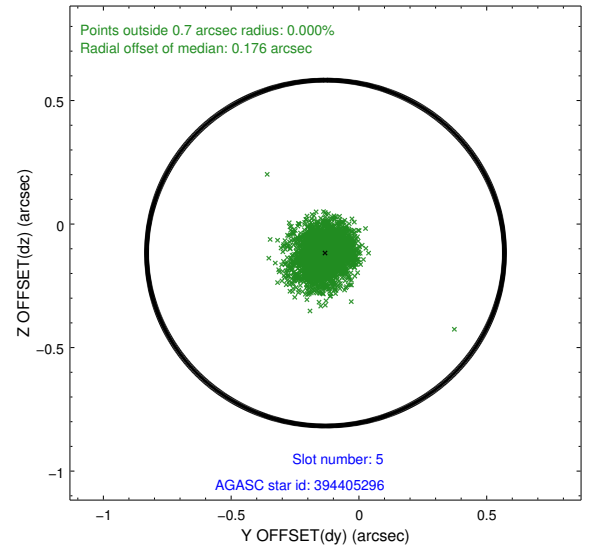
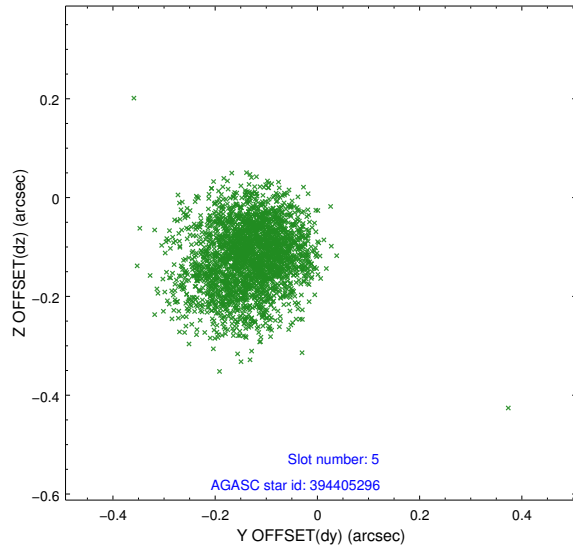
2.4.1 Slot 3



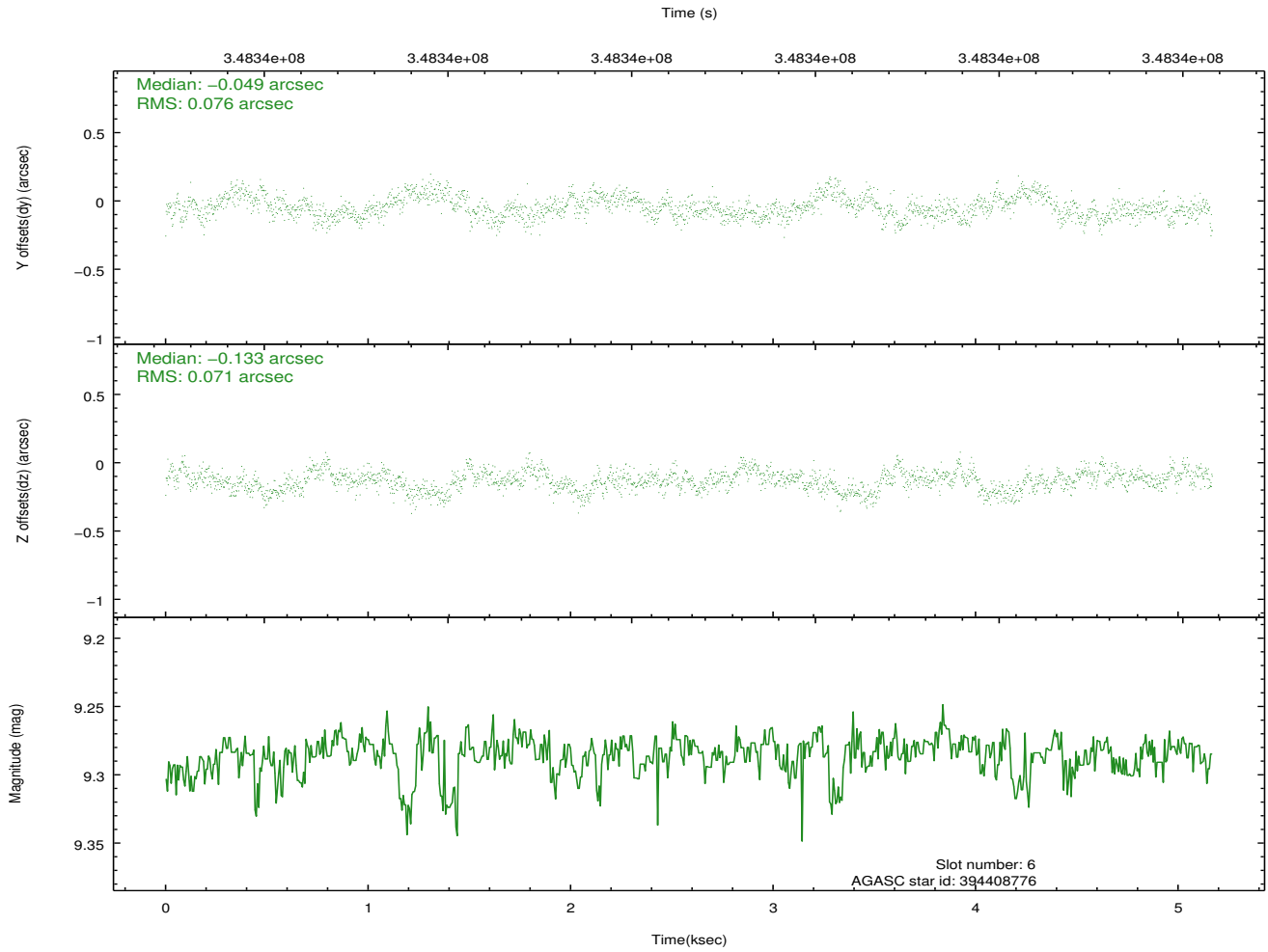
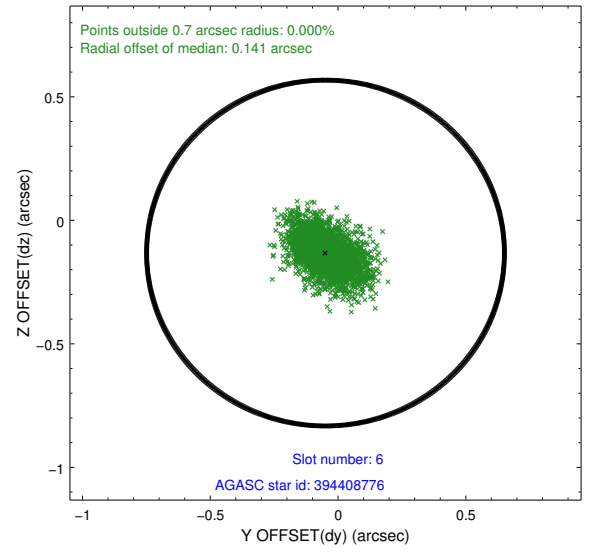
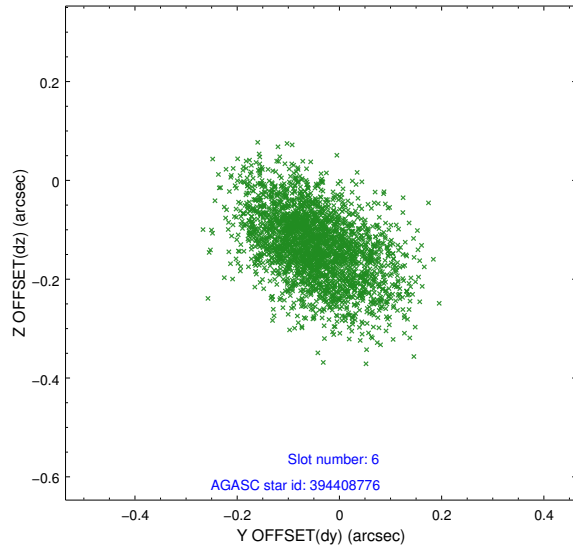
2.4.2 Slot 4



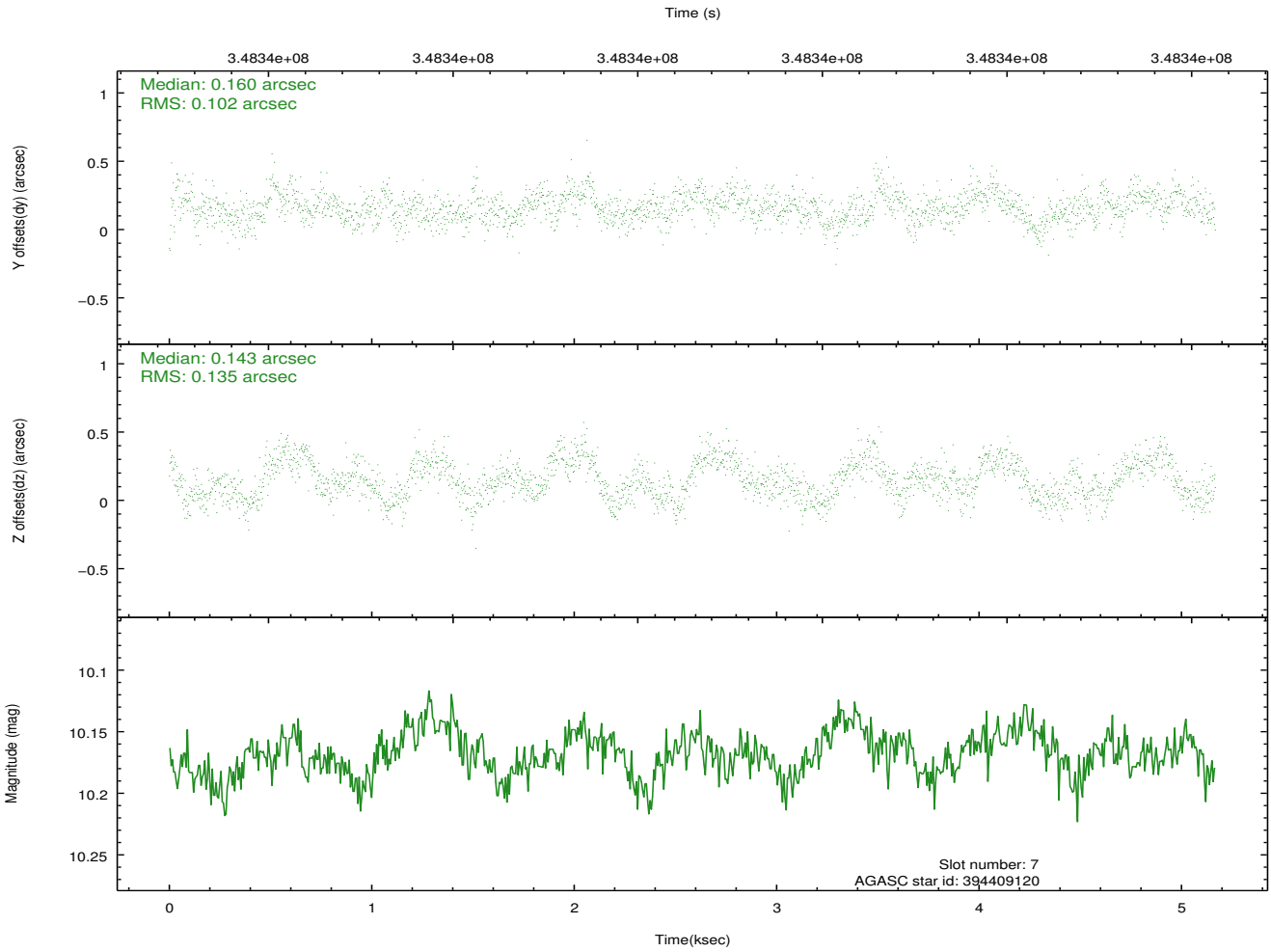
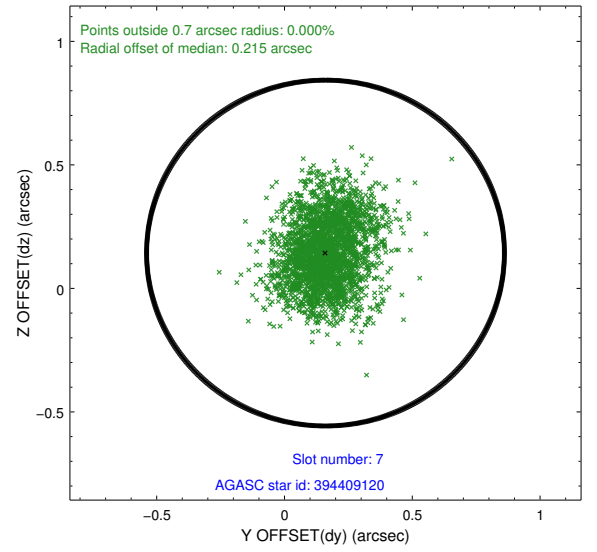
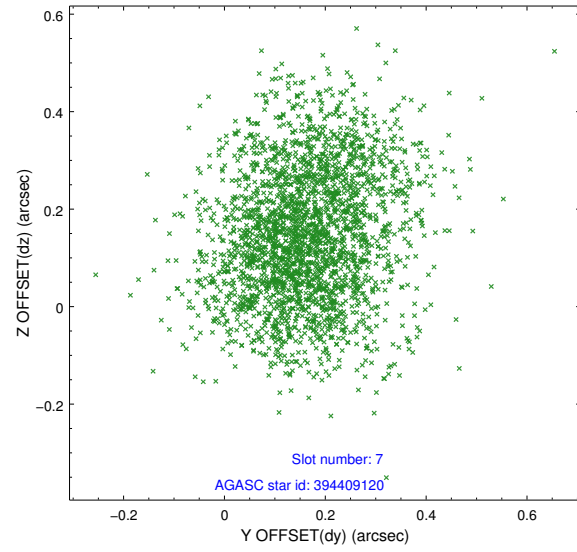
2.4.3 Slot 5



2.4.4 Slot 6

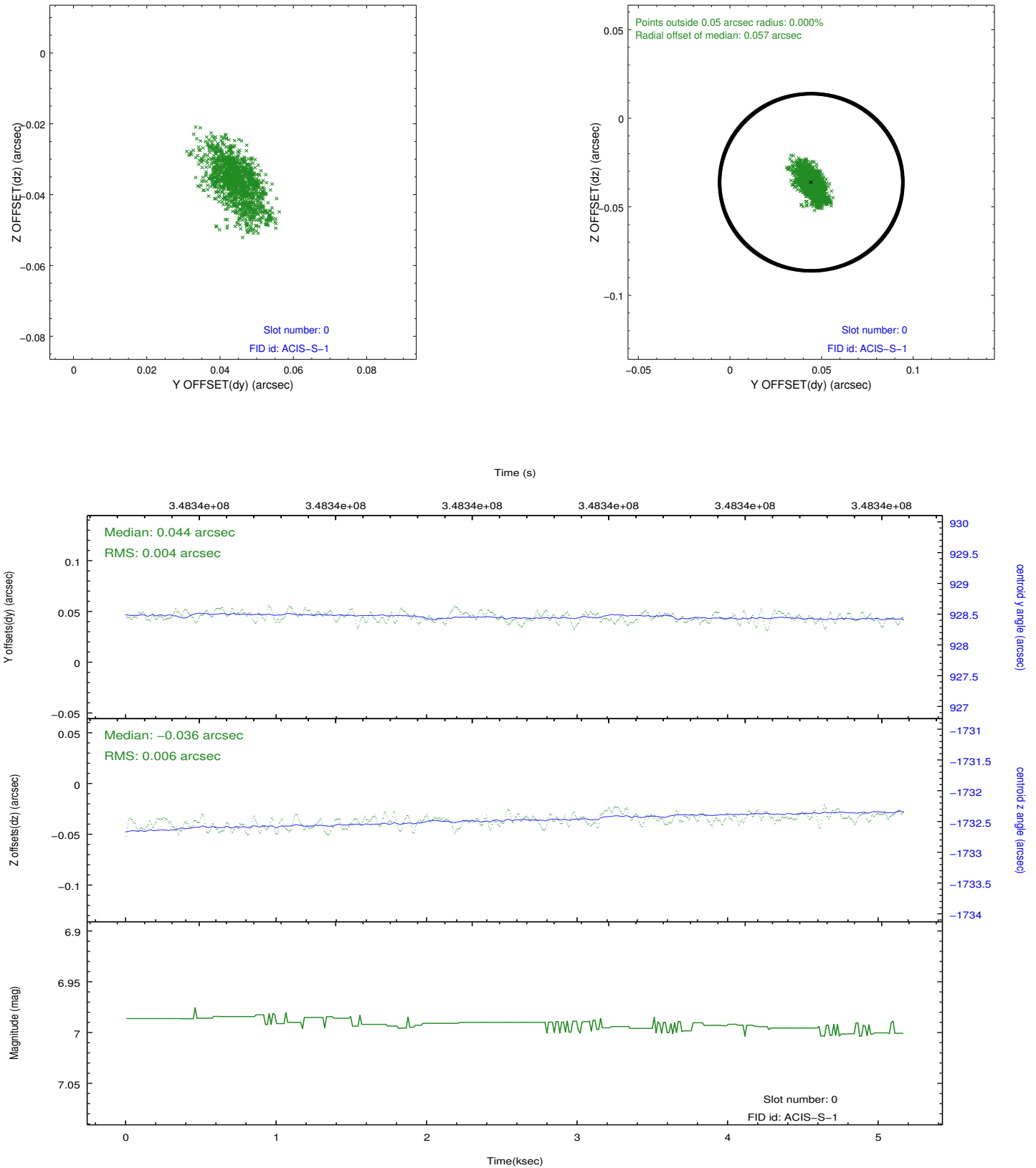


2.4.5 Slot 7

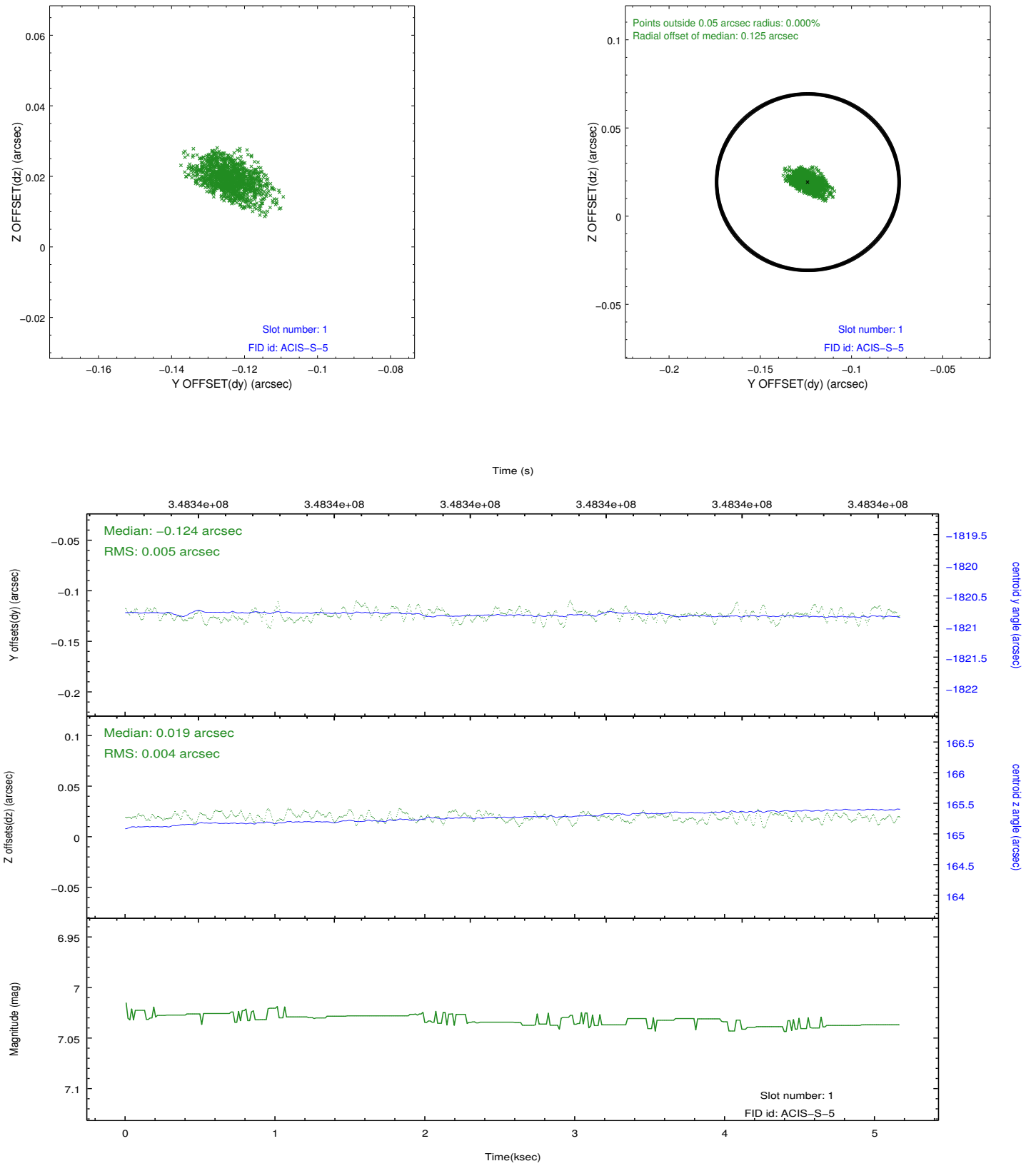


2.5 FID Slots

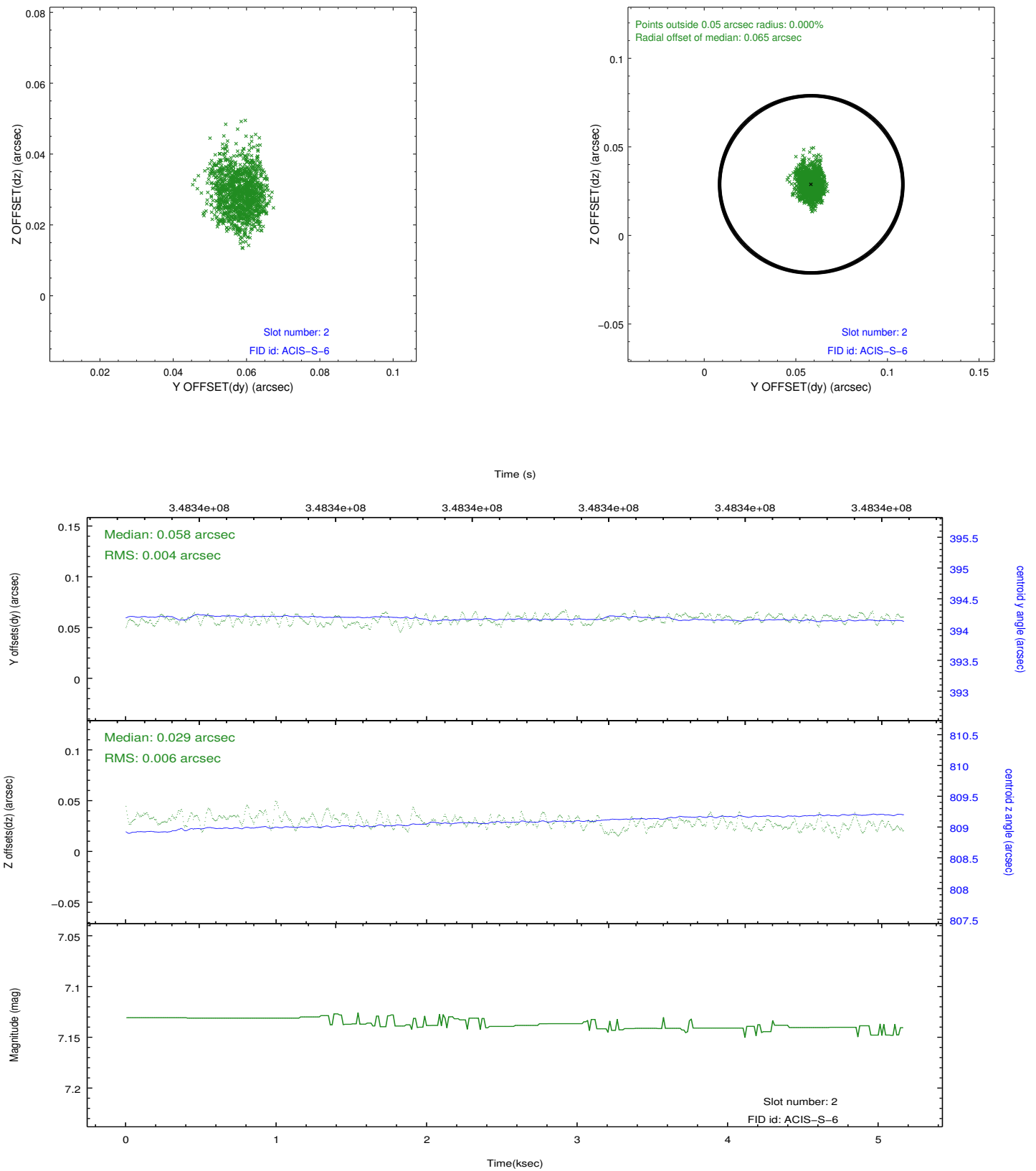
2.5.1 Slot 0



2.5.2 Slot 1



2.5.3 Slot 2



A Summary

A.1 Status

V&V Scientist	Beth Sundheim
V&V Date (YYYY-MM-DD)	2012.06.04
V&V Edition	1
V&V Disposition and Status	OK
V&V Charge Time	5.16150003

A.2 Comments