

V&V Reference Report

L2 ASCDS Version : 8.4.5

Observation 10259 - L2 Version 2
Chandra X-Ray Center

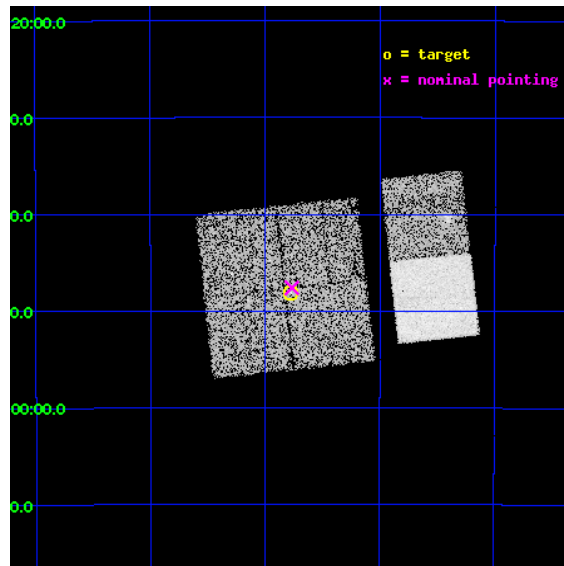
L2 Processing Date : Jun 9 2012

Contents

1	Front	2
2	OBI	3
2.1	OBI	3
2.1.1	Images	3
2.1.2	Bias	3
2.1.3	Parameters	4
2.1.4	Events	4
2.2	Compared Parameters	5
2.3	Aspect	6
2.4	Star Slots	9
2.4.1	Slot 3	9
2.4.2	Slot 4	10
2.4.3	Slot 5	11
2.4.4	Slot 6	12
2.4.5	Slot 7	13
2.5	FID Slots	14
2.5.1	Slot 0	14
2.5.2	Slot 1	15
2.5.3	Slot 2	16
A	Summary	17
A.1	Status	17
A.2	Comments	17

1 Front

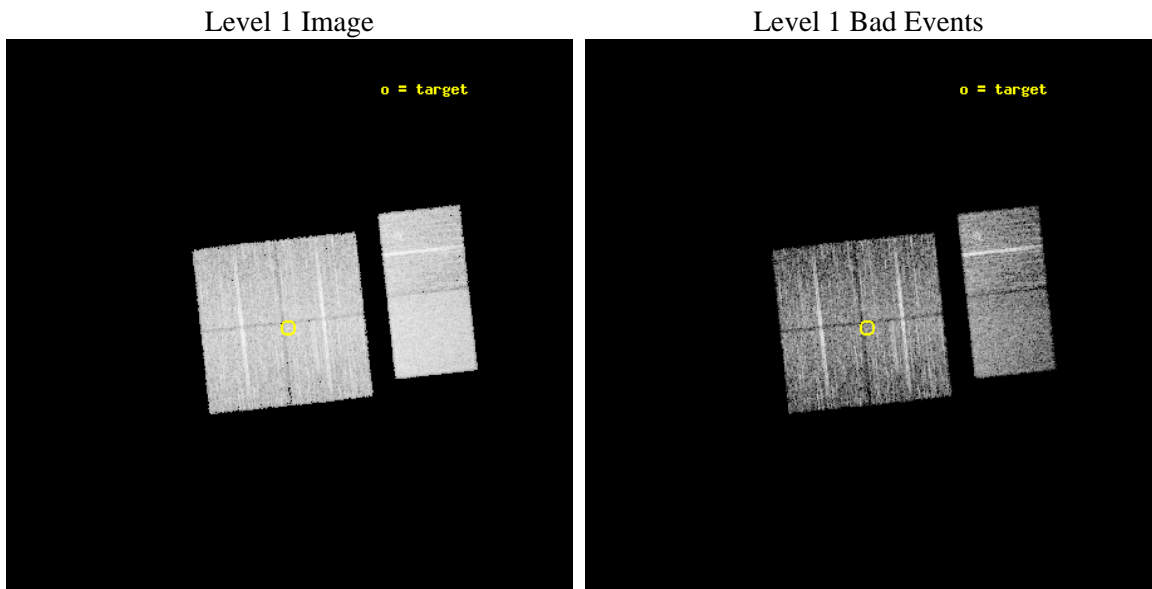
seq_num	701802	Sequence number
obs_id	10259	Observation id
title	Zeroing in on the sources of Ultrahigh Energy Cosmic Rays	Proposal
observer	Prof. Glennys Farrar	Principal investigator
object	IC 5186	Source name
dtcycle	0	
cycle	P	events from which exps? Prim/Second/Both
ra_targ	334.69375	Observer's specified target RA [deg]
dec_targ	-36.8015	Observer's specified target Dec [deg]
ra_nom	334.69176716234	Nominal RA [deg]
dec_nom	-36.793472737318	Nominal Dec [deg]
roll_nom	83.816510385917	Nominal Roll [deg]
revision	2	Processing version of data
ontime	4950.3999816179	Sum of GTIs [s]
livetime	4887.7150362777	Livetime [s]
ontime0	4950.3999816179	Sum of GTIs [s]
ontime1	4950.3999816179	Sum of GTIs [s]
ontime2	4950.3999816179	Sum of GTIs [s]
ontime3	4950.3999816179	Sum of GTIs [s]
ontime6	4950.3999816179	Sum of GTIs [s]
ontime7	4950.3999816179	Sum of GTIs [s]
l2events	57403	Number of level 2 events



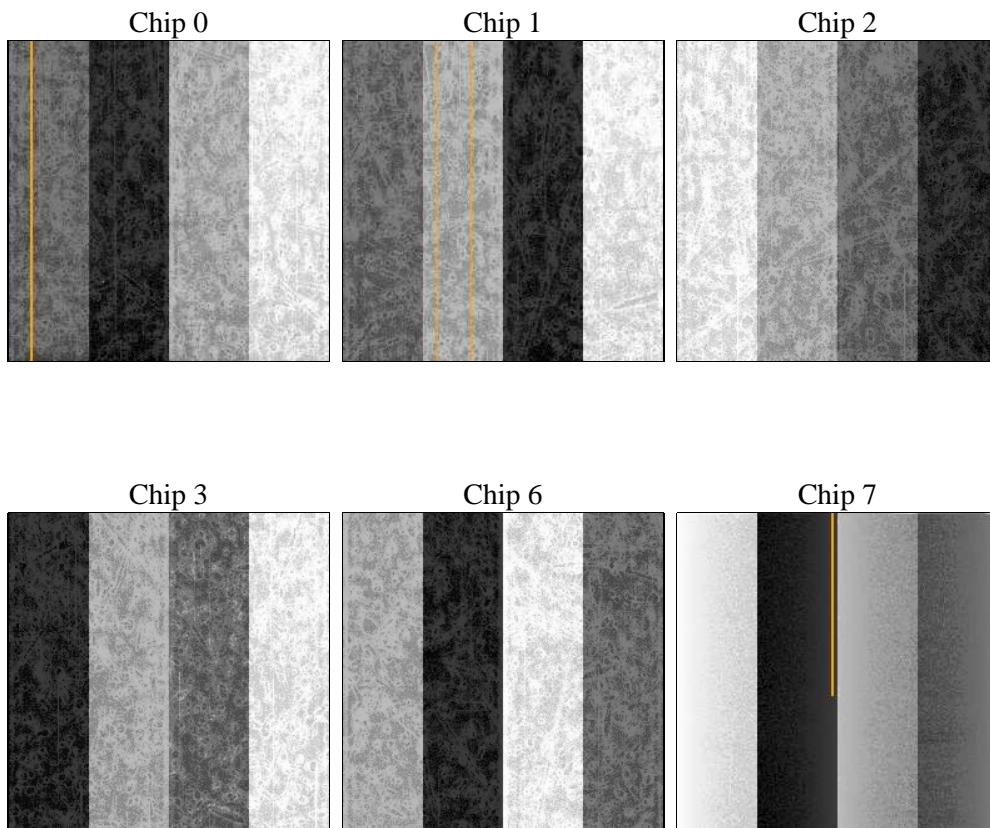
2 OBI

2.1 OBI

2.1.1 Images



2.1.2 Bias



2.1.3 Parameters

obi_num	1	Obi number	sched_exp_time	5000.000000	[s] Scheduled observation exposure time
ascdsver	8.4.5	Processing system revision	ontime	4950.3999816179	Sum of GTIs [s]
caldsver	4.4.10	 	ontime0	4950.3999816179	Sum of GTIs [s]
date	2012-06-09T23:04:25	Date and time of file creation	ontime1	4950.3999816179	Sum of GTIs [s]
revision	2	Processing version of data	ontime2	4950.3999816179	Sum of GTIs [s]
			ontime3	4950.3999816179	Sum of GTIs [s]
			ontime6	4950.3999816179	Sum of GTIs [s]
			ontime7	4950.3999816179	Sum of GTIs [s]
			l1events	323667	Number of level 1 events

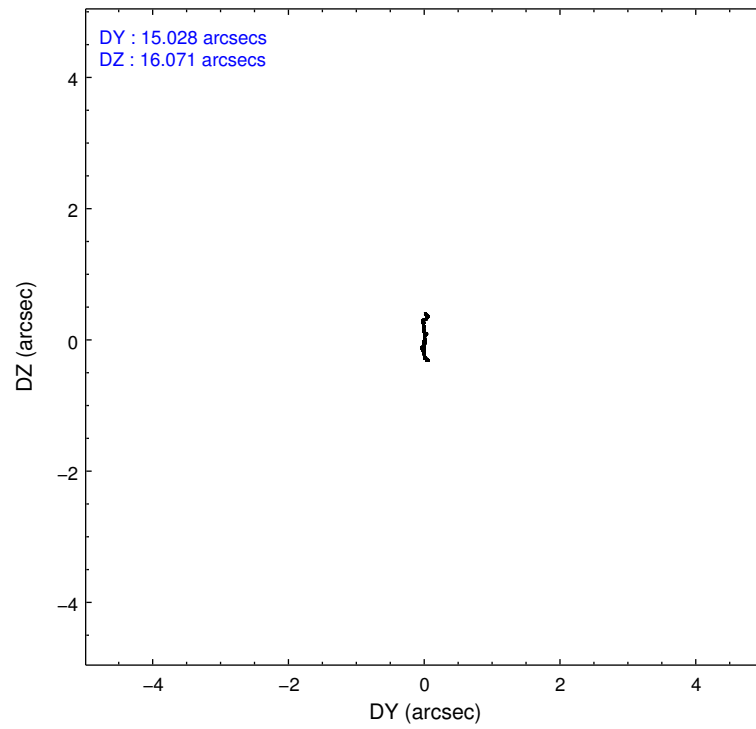
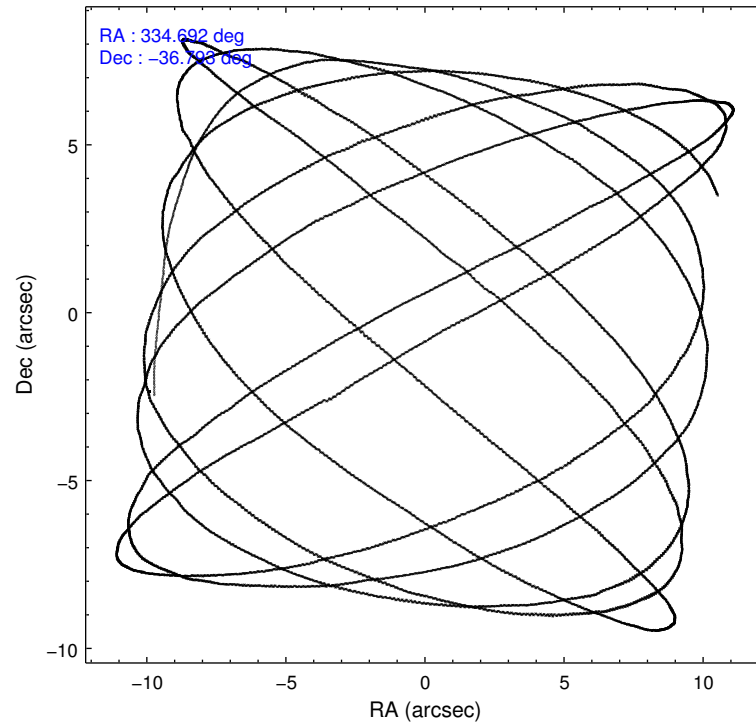
2.1.4 Events

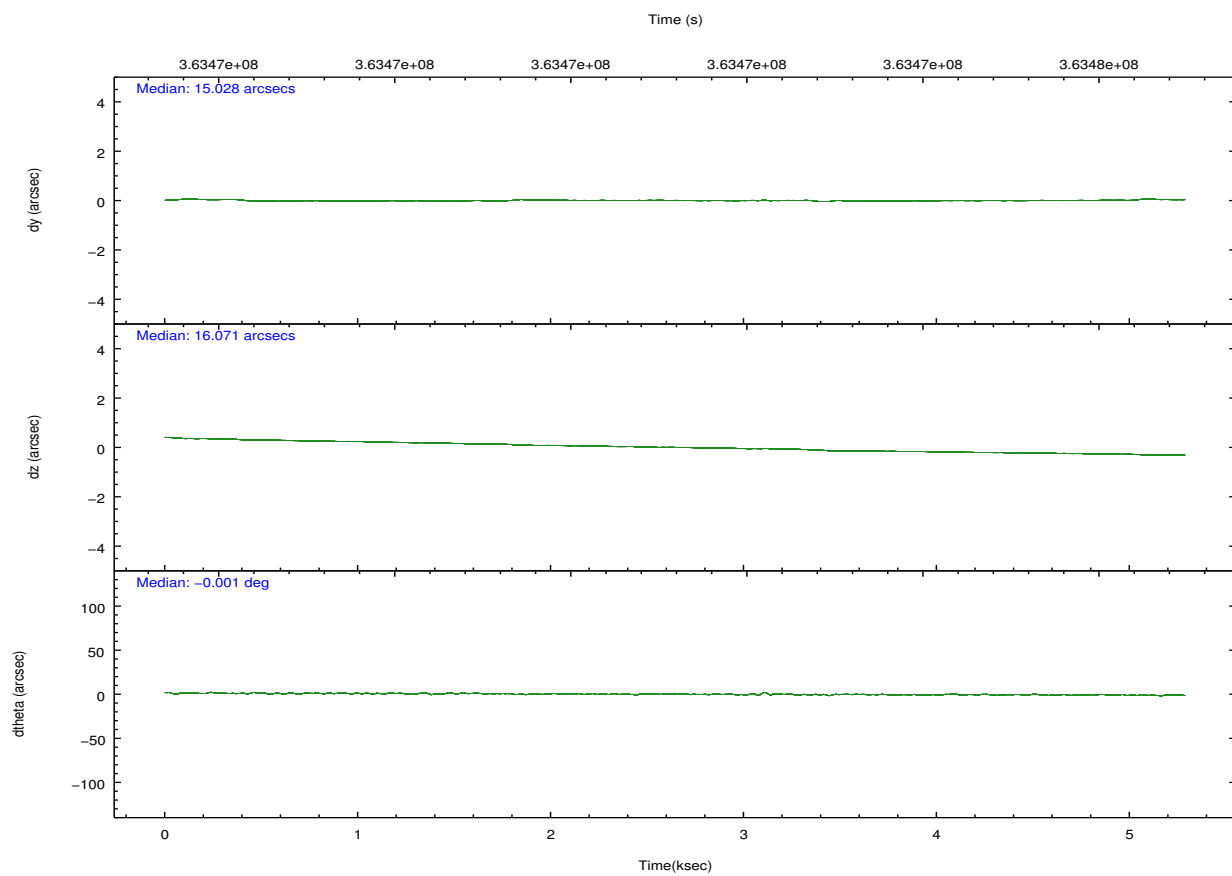
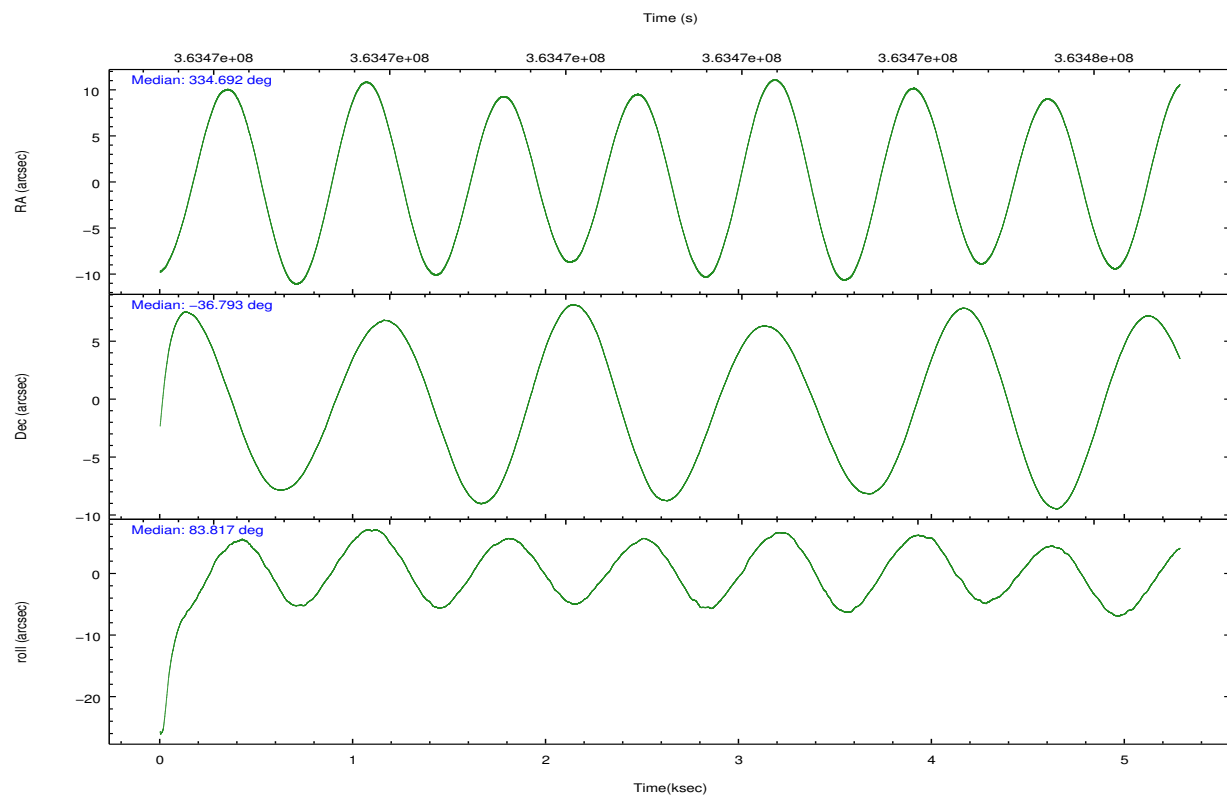
	ccd 0	ccd 1	ccd 2	ccd 3	ccd 6	ccd 7		ccd 0	ccd 1	ccd 2	ccd 3	ccd 6	ccd 7
level 1 events	46078	47566	49161	51711	56056	73095	grade 0 events	2690	2475	2635	2724	2779	2649
rejected events	39627	40969	43021	45439	49356	42754		5%	5%	5%	5%	4%	3%
rejected %	85%	86%	87%	87%	88%	58%	grade 1 events	36	23	36	45	35	82
								0%	0%	0%	0%	0%	0%
							grade 2 events	1492	1573	1330	1265	1476	6269
								3%	3%	2%	2%	2%	8%
							grade 3 events	598	587	558	574	559	2552
								1%	1%	1%	1%	0%	3%
							grade 4 events	530	593	561	562	589	2457
								1%	1%	1%	1%	1%	3%
							grade 5 events	2208	2251	2154	2493	2455	6829
								4%	4%	4%	4%	4%	9%
							grade 6 events	1143	1373	1062	1150	1303	16439
								2%	2%	2%	2%	2%	22%
							grade 7 events	37381	38691	40825	42898	46860	35818
								81%	81%	83%	82%	83%	49%

2.2 Compared Parameters

Parameter	Planned	Actual	Parameter	Planned	Actual
Instrument	ACIS	ACIS	Obspar format version number	7	7
Detector	ACIS-012367	ACIS-012367	Obspar file type	PREDICTED	ACTUAL
Grating	NONE	NONE	Obspar update status	NONE	UPDATED
Data mode	FAINT	FAINT	CCD I0 on	Y	Y
Observation mode	POINTING	POINTING	CCD I1 on	Y	Y
[deg] Pointing RA	334.705796	334.6917671623433	CCD I2 on	Y	Y
[deg] Pointing Dec	-36.818683	-36.79347273731831	CCD I3 on	Y	Y
[deg] Pointing Roll	83.616260	83.81651038591654	CCD S0 on	N	N
[mm] SIM focus pos	-0.782348	-0.7809083437167272	CCD S1 on	N	N
[mm] SIM defocus	0	0.001439871863259334	CCD S2 on	O1	Y
[mm] SIM translation stage pos	-233.592463	-233.5874344608287	CCD S3 on	O2	Y
[mm] SIM translation stage offset	0	-0.005018542100998502	CCD S4 on	N	N
[s] Observation start time (MET)	363470241.184000	363469228.37146	CCD S5 on	N	N
Observation start date	2009-07-08T19:56:15	2009-07-08T19:40:28	Number of optional ACIS chips dropped	0	0
[s] Observation end time (MET)	363475241.184000	363476641.17183	On-chip summing requested	N	N
Observation end date	2009-07-08T21:19:35	2009-07-08T21:44:01	Subarray requested	NONE	NONE
Read mode	TIMED	TIMED	Alternating exposures requested	N	N
			[s] Primary exposure time	0.000000	3.2

2.3 Aspect



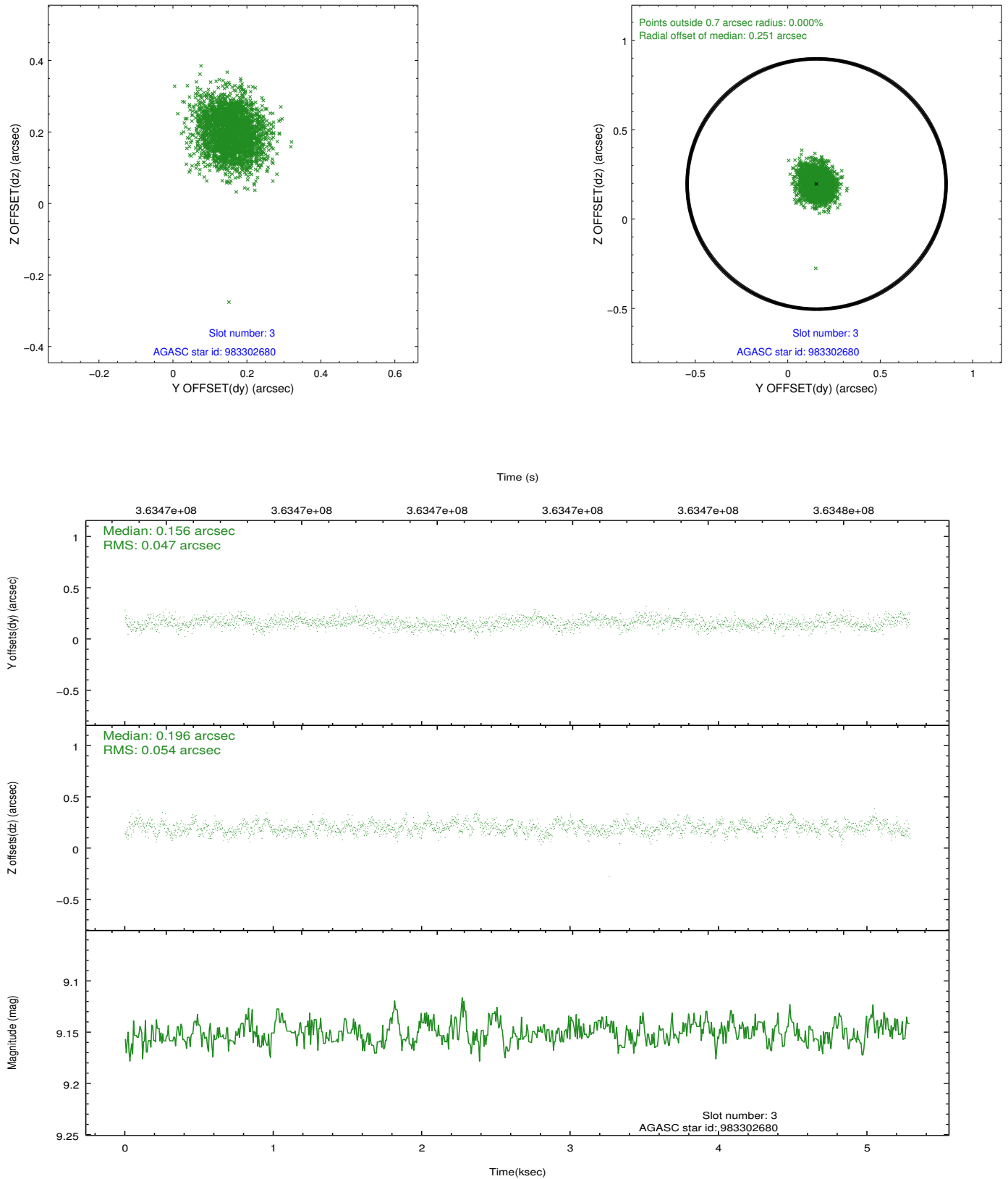


Slot Statistics

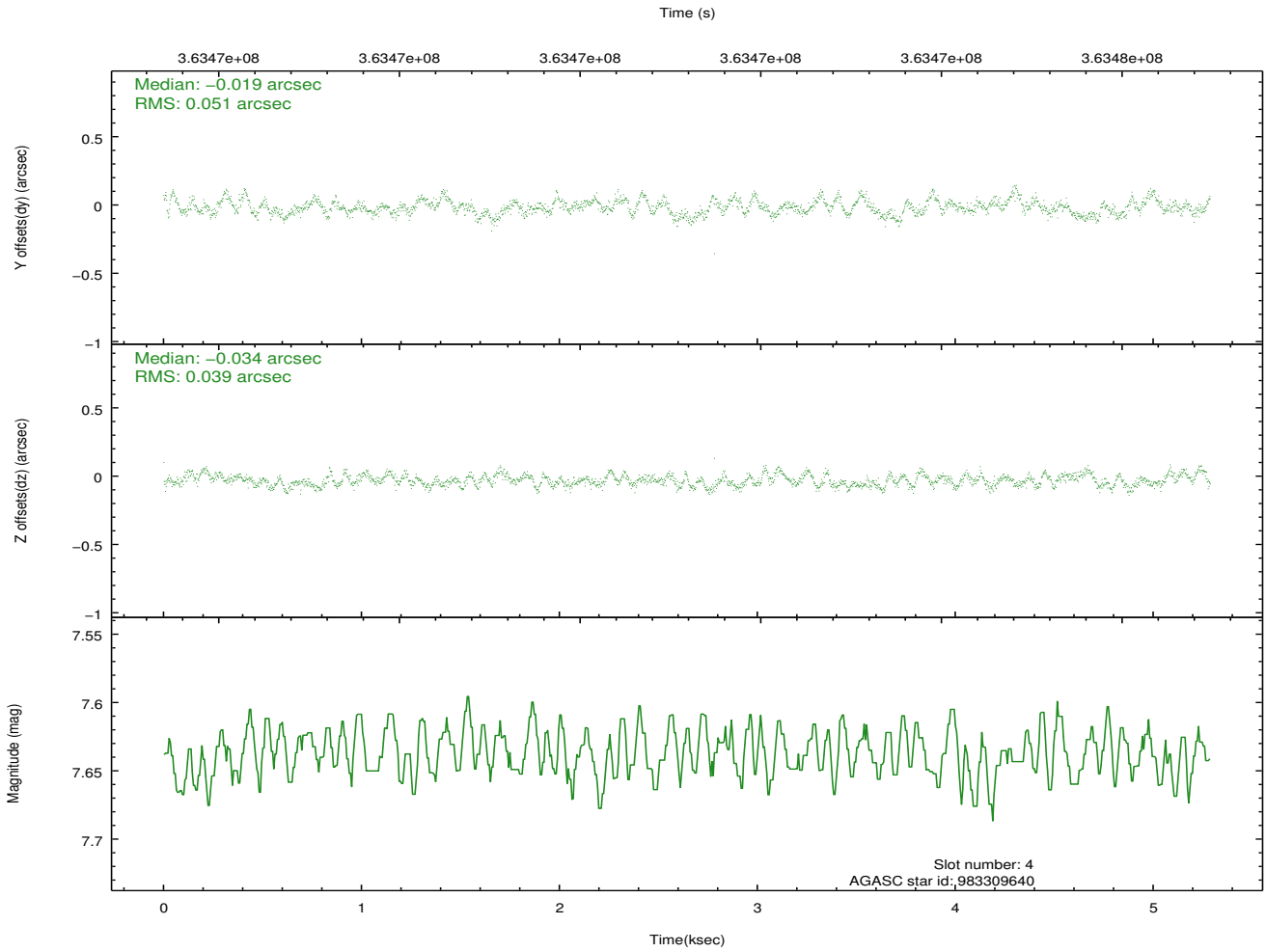
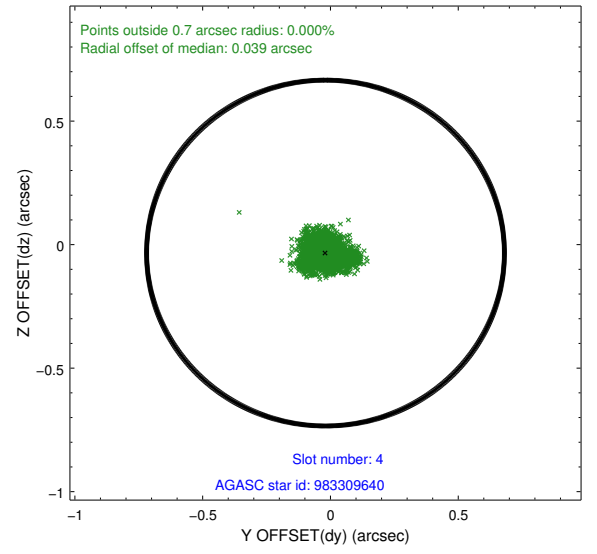
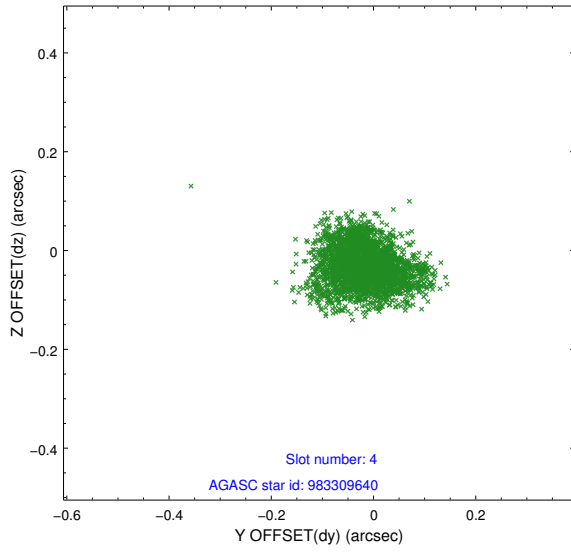
slot	status	id	mag	n_pts	med_dy	med_dz	dr1	dr2	ra	dec	mean_y	mean_z
0	FID	ACIS-I-1	7.01	1290	0.058	-0.038	0.010	0.017	0.000000	0.000000	924.47	-839.75
1	FID	ACIS-I-5	7.00	1290	-0.219	0.056	0.008	0.014	0.000000	0.000000	-1823.26	1057.29
2	FID	ACIS-I-6	7.01	1290	0.070	0.052	0.008	0.013	0.000000	0.000000	388.81	1703.05
3	GUIDE	983302680	9.15	2580	0.156	0.196	0.076	0.123	334.787684	-37.354212	-1889.97	-447.27
4	GUIDE	983309640	7.64	2578	-0.019	-0.034	0.068	0.111	334.570582	-36.595765	752.68	477.24
5	GUIDE	983309856	8.89	2576	-0.171	-0.061	0.067	0.110	334.553948	-36.261002	1945.76	661.47
6	GUIDE	983311272	9.19	2577	-0.167	0.032	0.081	0.135	334.507174	-36.215546	2093.42	814.58
7	GUIDE	983304248	8.94	2577	0.196	-0.134	0.073	0.117	334.308844	-37.410454	-2244.94	891.26

2.4 Star Slots

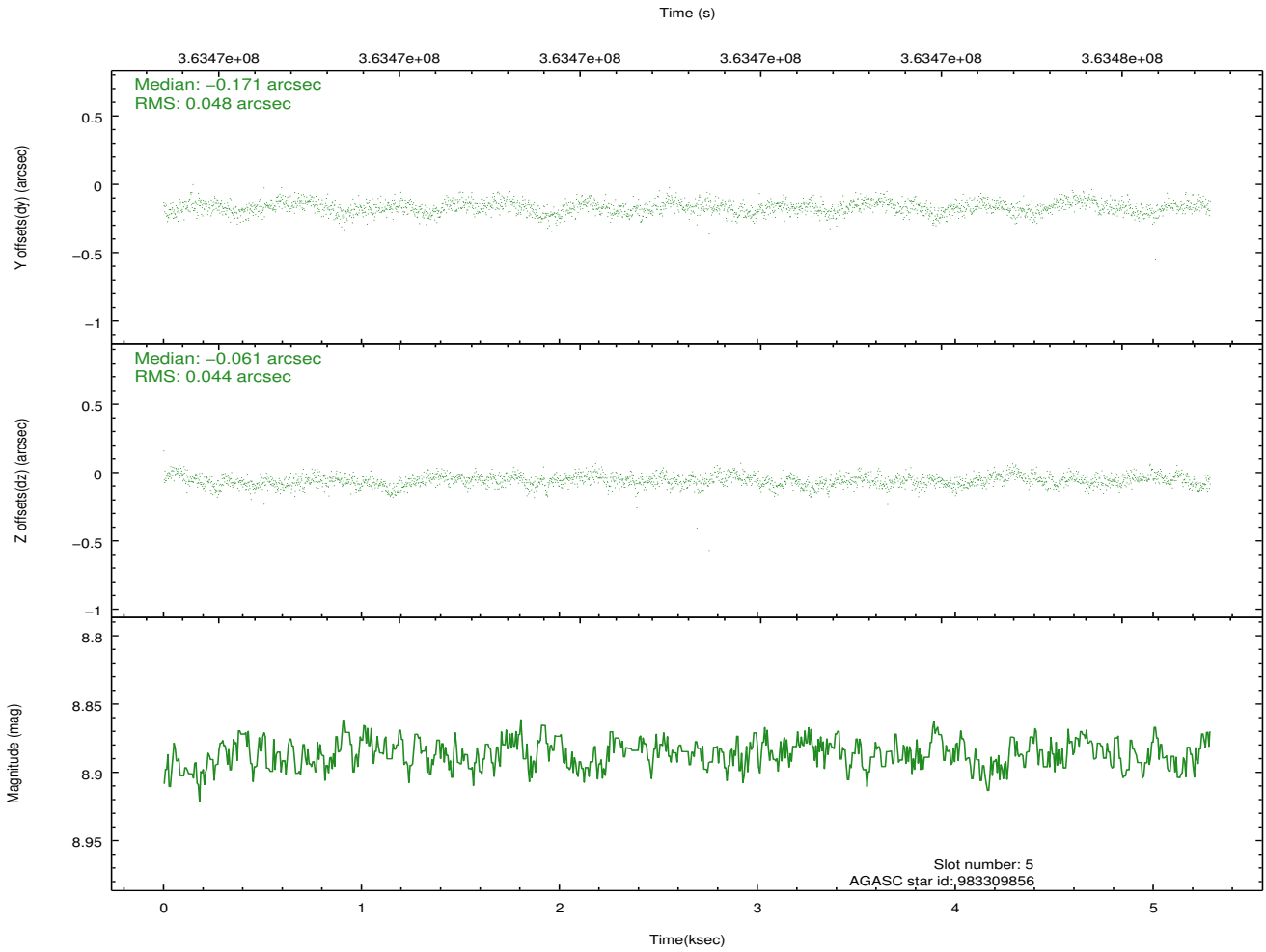
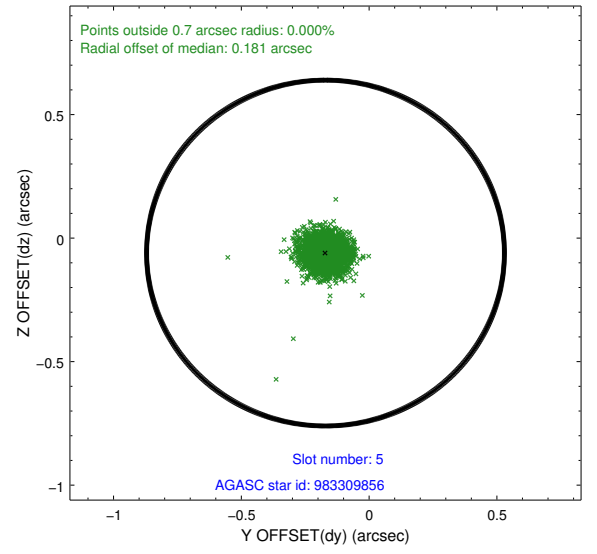
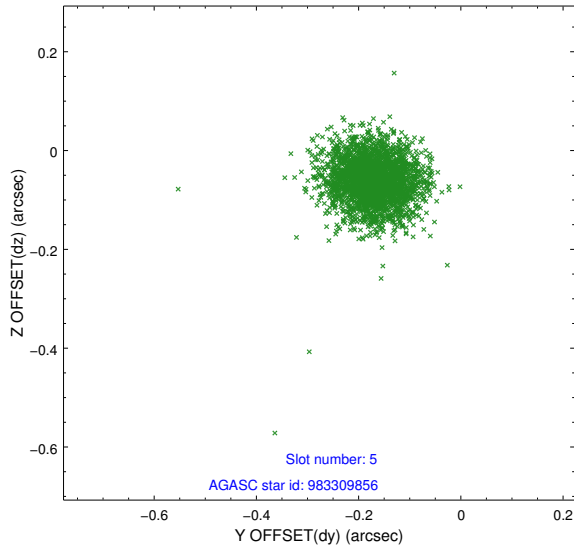
2.4.1 Slot 3



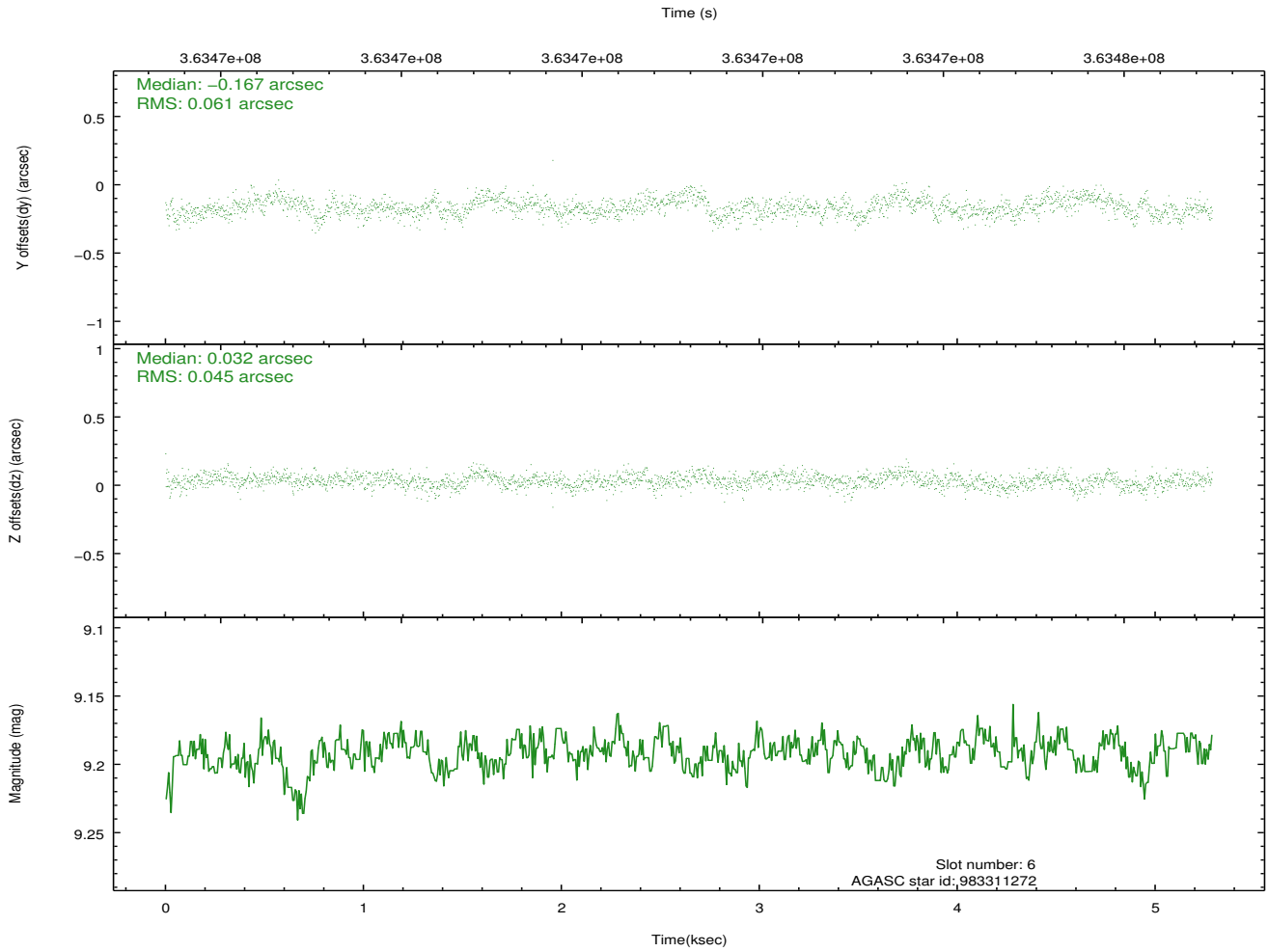
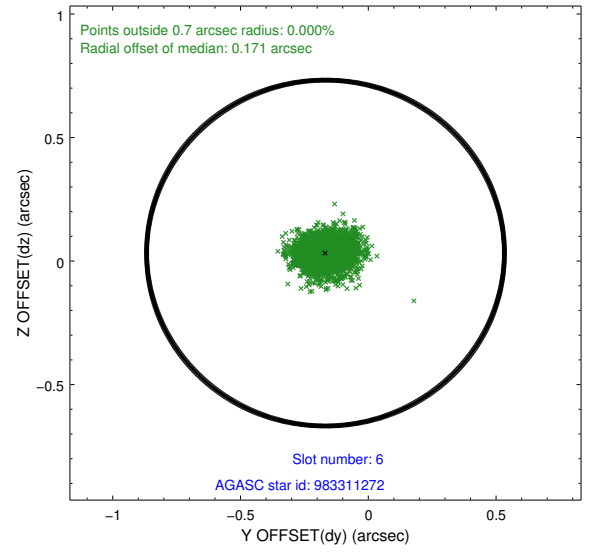
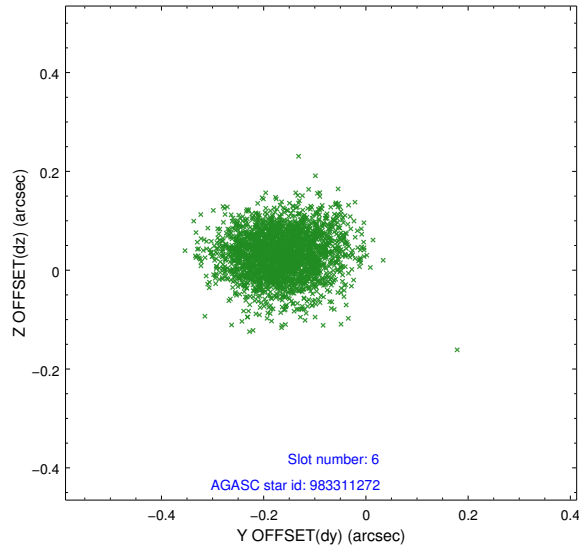
2.4.2 Slot 4



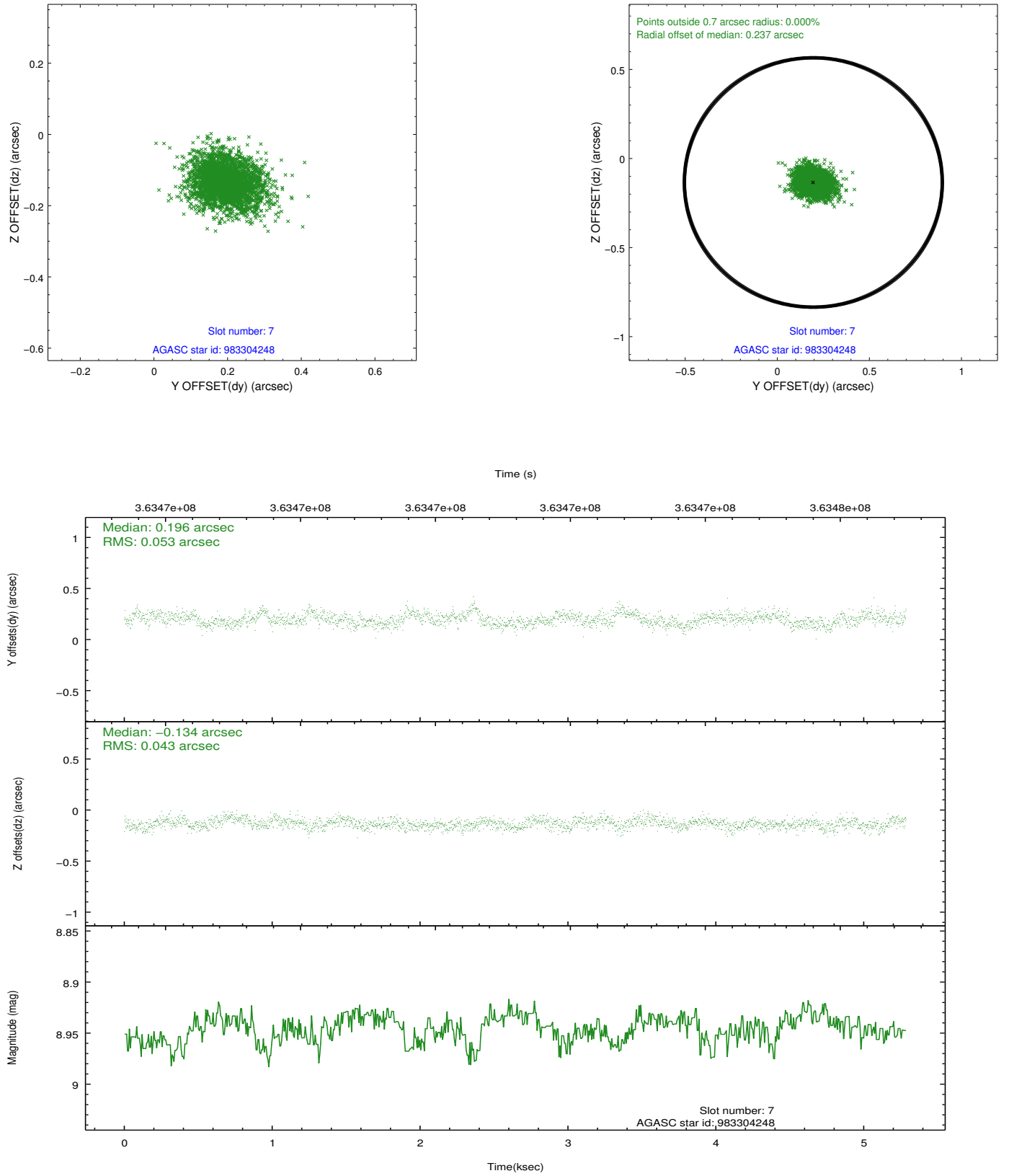
2.4.3 Slot 5



2.4.4 Slot 6

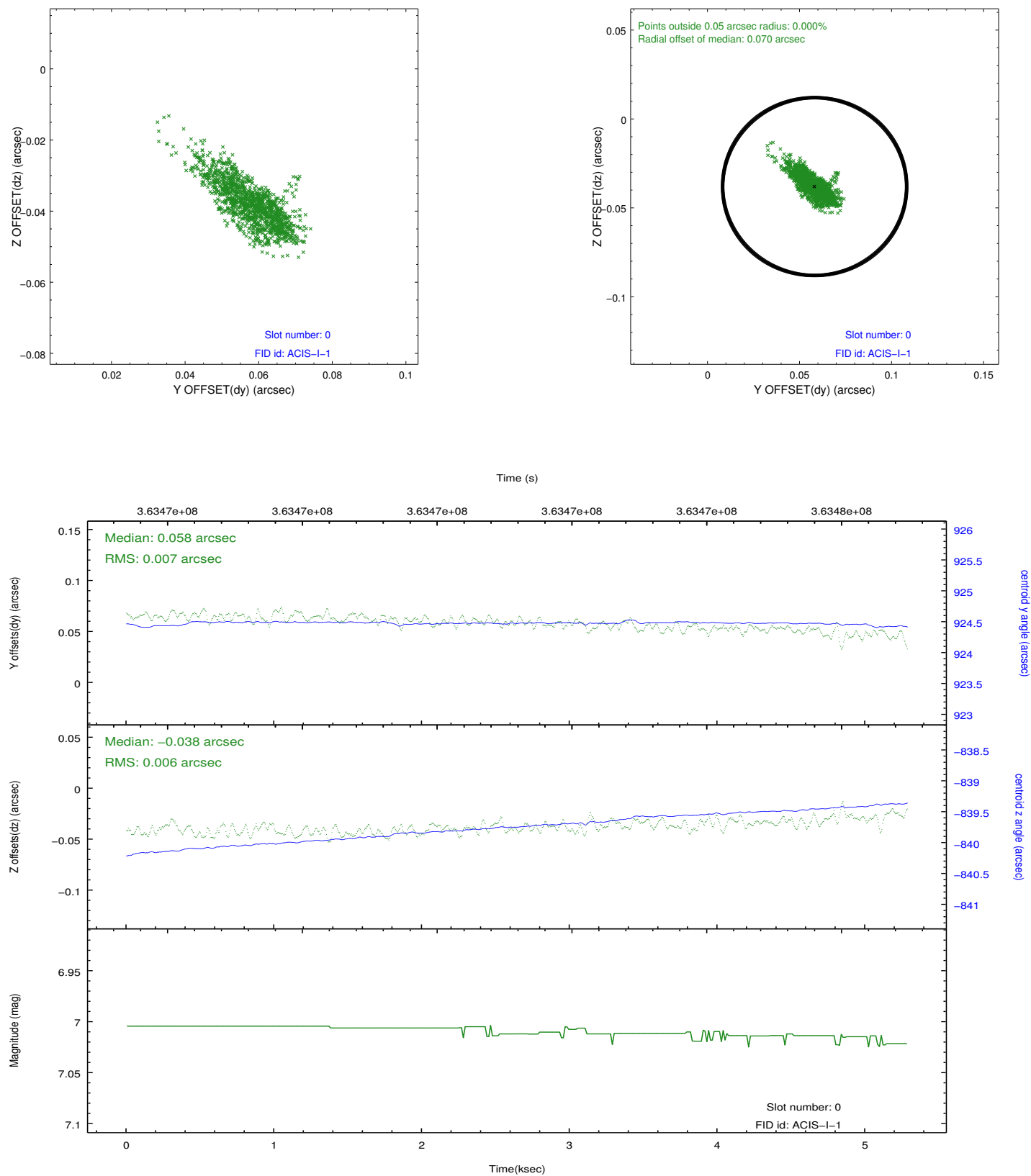


2.4.5 Slot 7

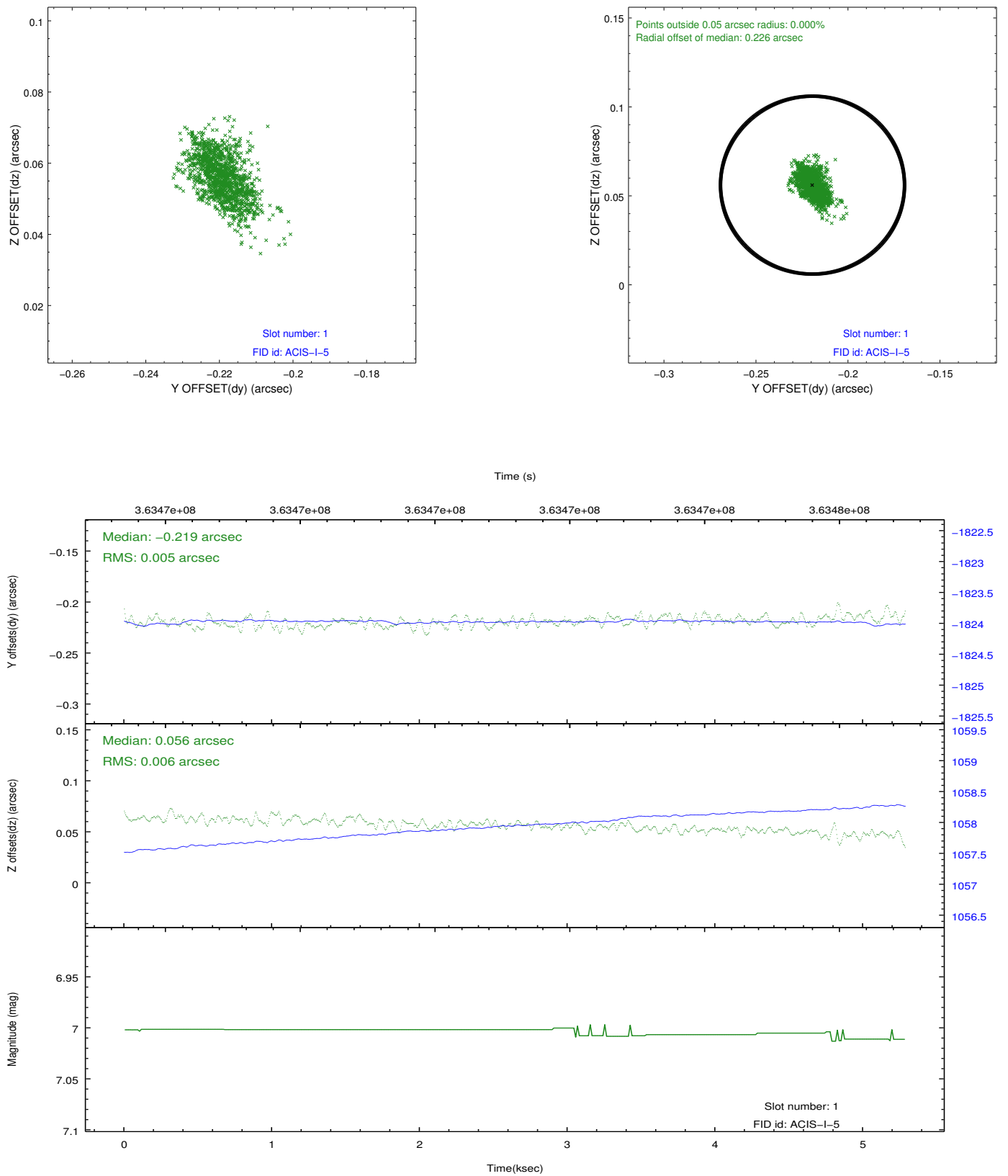


2.5 FID Slots

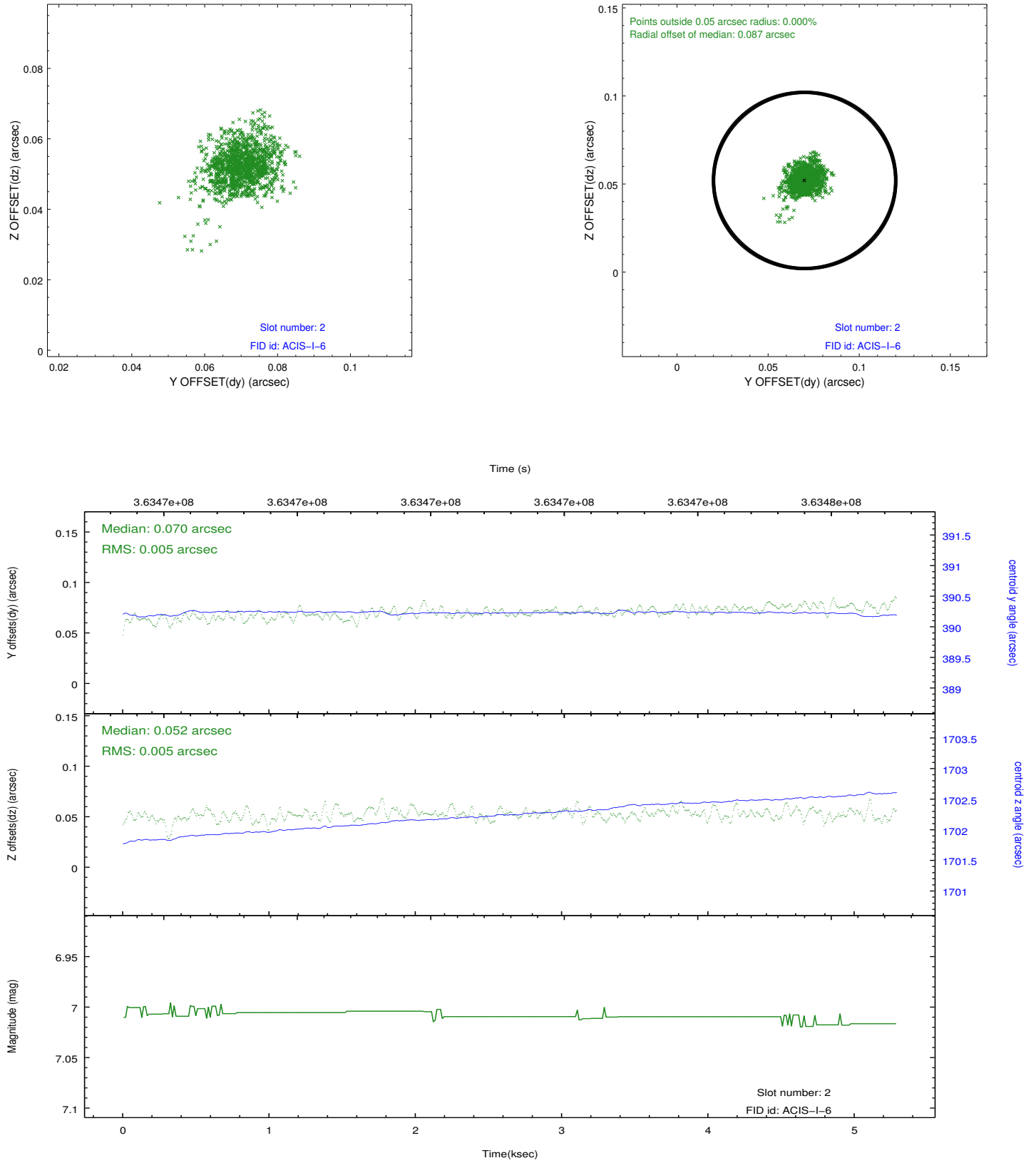
2.5.1 Slot 0



2.5.2 Slot 1



2.5.3 Slot 2



A Summary

A.1 Status

V&V Scientist	Jen Lauer
V&V Date (YYYY-MM-DD)	2012.06.13
V&V Edition	1
V&V Disposition and Status	OK
V&V Charge Time	4.95039998

A.2 Comments