

V&V Reference Report

L2 ASCDS Version : 8.4.4

Observation 9928 - L2 Version 2
Chandra X-Ray Center

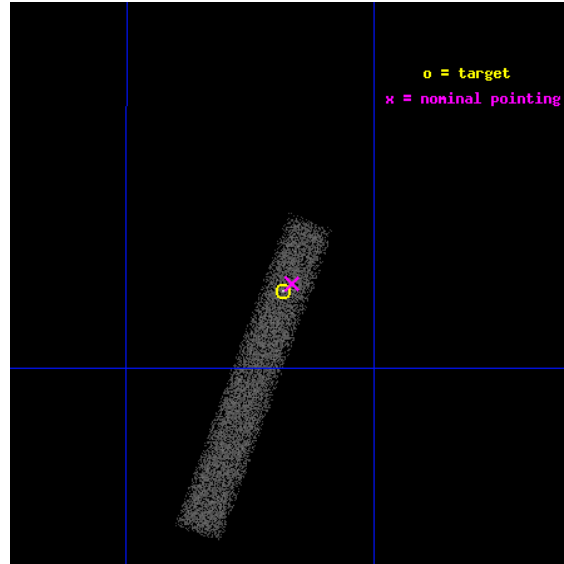
L2 Processing Date : May 23 2012

Contents

1	Front	2
2	OBI	3
2.1	OBI	3
2.1.1	Images	3
2.1.2	Bias	3
2.1.3	Parameters	4
2.1.4	Events	4
2.2	Compared Parameters	5
2.3	Aspect	6
2.4	Star Slots	9
2.4.1	Slot 3	9
2.4.2	Slot 4	10
2.4.3	Slot 5	11
2.4.4	Slot 6	12
2.5	FID Slots	13
2.5.1	Slot 0	13
2.5.2	Slot 1	14
2.5.3	Slot 2	15
A	Summary	16
A.1	Status	16
A.2	Comments	16

1 Front

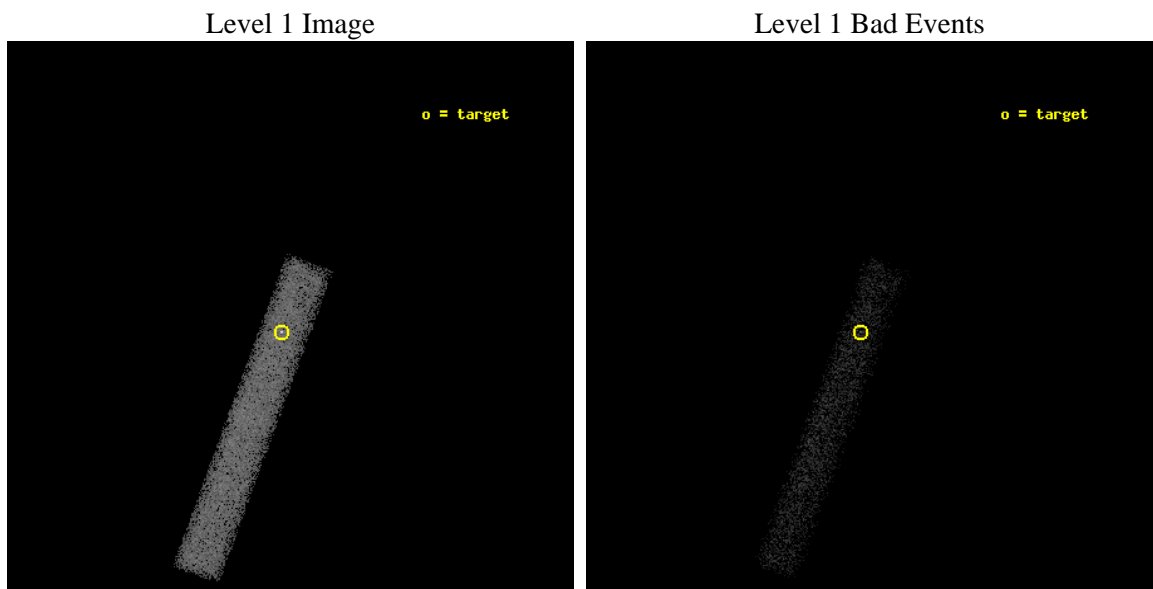
seq_num	200544	Sequence number
obs_id	9928	Observation id
title	Constraining the Effects of High Energy Photons on Proto-Planetary Disk Chemistry and Evolution	Proposal title
observer	Dr. Gregory Herczeg	Principal investigator
object	GM Aur	Source name
dtcycle	0	
cycle	P	events from which exps? Prim/Second/Both
ra_targ	73.795833	Observer's specified target RA [deg]
dec_targ	30.3665	Observer's specified target Dec [deg]
ra_nom	73.791413816238	Nominal RA [deg]
dec_nom	30.369521929924	Nominal Dec [deg]
roll_nom	110.27810206104	Nominal Roll [deg]
revision	2	Processing version of data
ontime	15394.799082398	Sum of GTIs [s]
livetime	13962.270163612	Livetime [s]
ontime7	15394.799082398	Sum of GTIs [s]
l2events	14076	Number of level 2 events



2 OBI

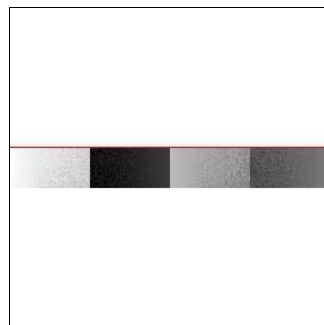
2.1 OBI

2.1.1 Images



2.1.2 Bias

Chip 7



2.1.3 Parameters

obi_num	0	Obi number	sched_exp_time	15364.000000	[s] Scheduled observation exposure time
ascdsver	8.4.4	Processing system revision	ontime	15394.799082398	Sum of GTIs [s]
caldsver	4.4.9	 	ontime7	15394.799082398	Sum of GTIs [s]
date	2012-05-23T12:57:27	Date and time of file creation	l1events	32866	Number of level 1 events
revision	2	Processing version of data			

2.1.4 Events

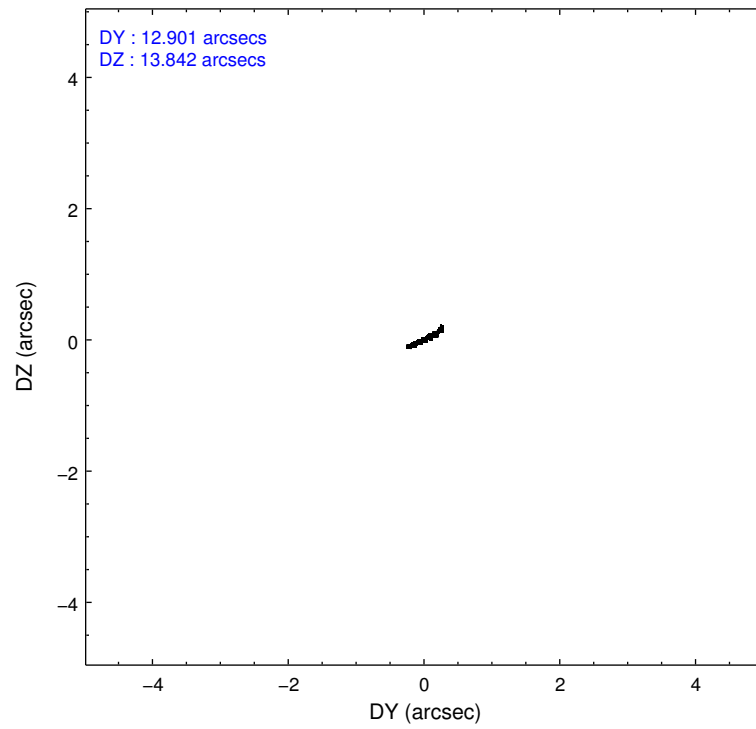
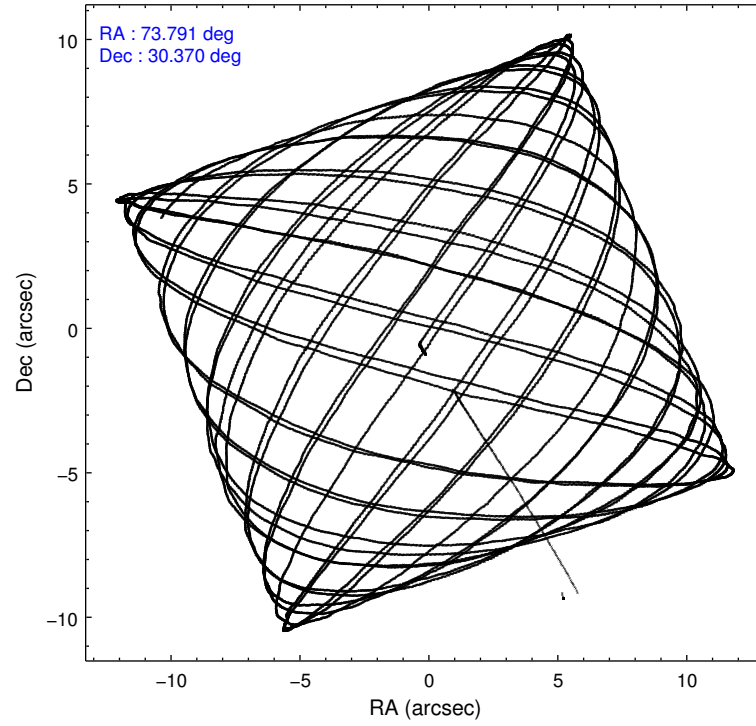
	ccd 7
level 1 events	32866
rejected events	18277
rejected %	55%

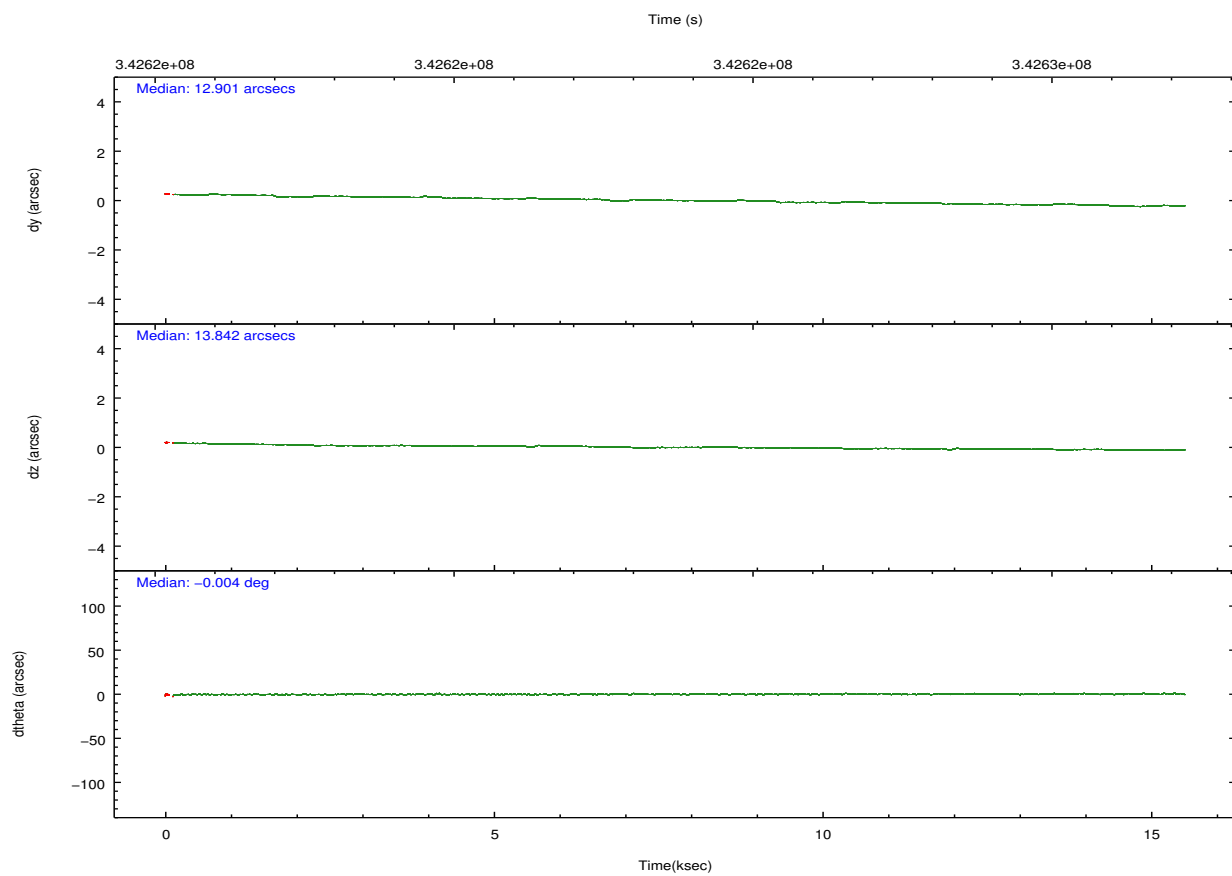
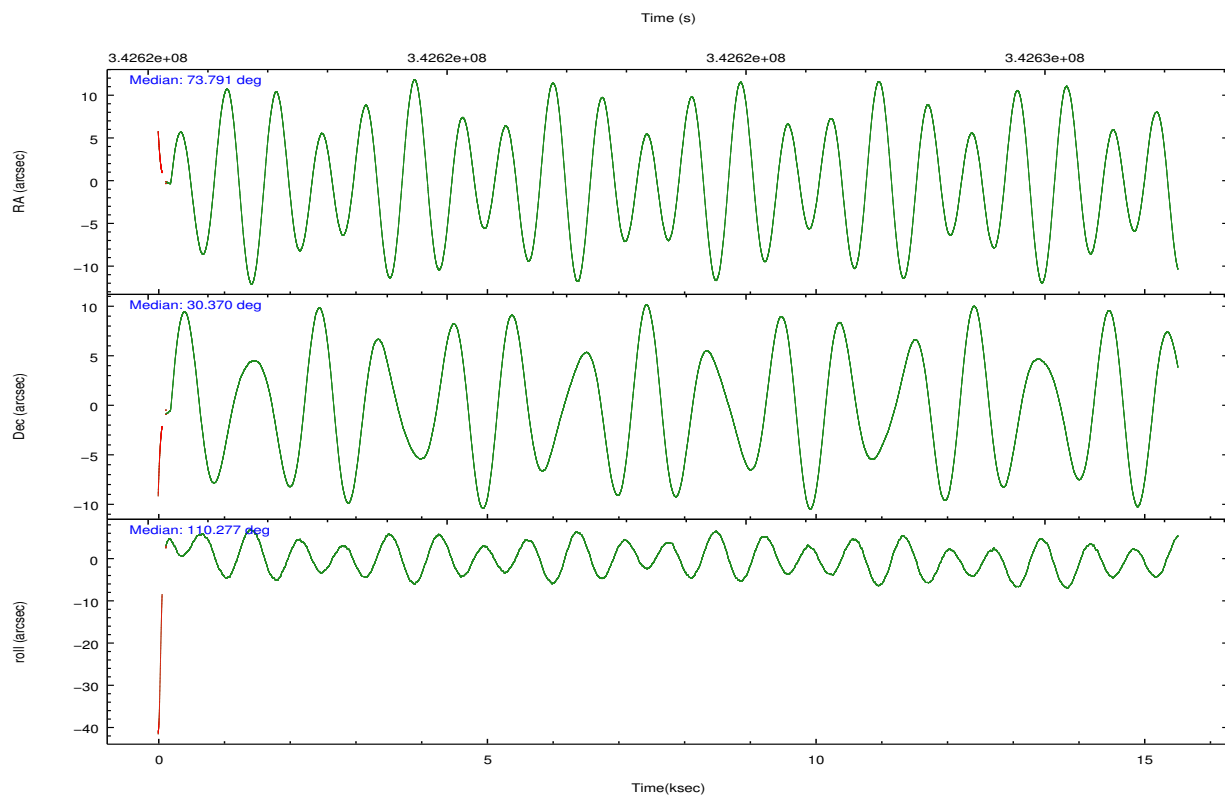
	ccd 7
grade 0 events	1808
	5%
grade 1 events	60
	0%
grade 2 events	3306
	10%
grade 3 events	1968
	5%
grade 4 events	2084
	6%
grade 5 events	2900
	8%
grade 6 events	6921
	21%
grade 7 events	13819
	42%

2.2 Compared Parameters

Parameter	Planned	Actual	Parameter	Planned	Actual
Instrument	ACIS	ACIS	Obspar format version number	7	7
Detector	ACIS-7	ACIS-7	Obspar file type	PREDICTED	ACTUAL
Grating	NONE	NONE	Obspar update status	NONE	UPDATED
Data mode	FAINT	FAINT	Number of optional ACIS chips dropped	0	0
Observation mode	POINTING	POINTING	On-chip summing requested	N	N
[deg] Pointing RA	73.816049	73.79141381623788	Subarray requested	CUSTOM	1/8
[deg] Pointing Dec	30.352295	30.36952192992402	Subarray start row	449	449
[deg] Pointing Roll	110.109053	110.2781020610419	Subarray row count	128	128
[mm] SIM focus pos	-0.684267	-0.6828225247311905	Alternating exposures requested	N	N
[mm] SIM defocus	0	0.001444936568705701	[s] Primary exposure time	0.000000	0.4
[mm] SIM translation stage pos	-190.132523	-190.1400660498719			
[mm] SIM translation stage offset	0	0.00754346686406393			
[s] Observation start time (MET)	342616077.184000	342614323.13585			
Observation start date	2008-11-09T11:06:52	2008-11-09T10:38:43			
[s] Observation end time (MET)	342631441.184000	342632918.17427			
Observation end date	2008-11-09T15:22:56	2008-11-09T15:48:38			
Read mode	TIMED	TIMED			

2.3 Aspect



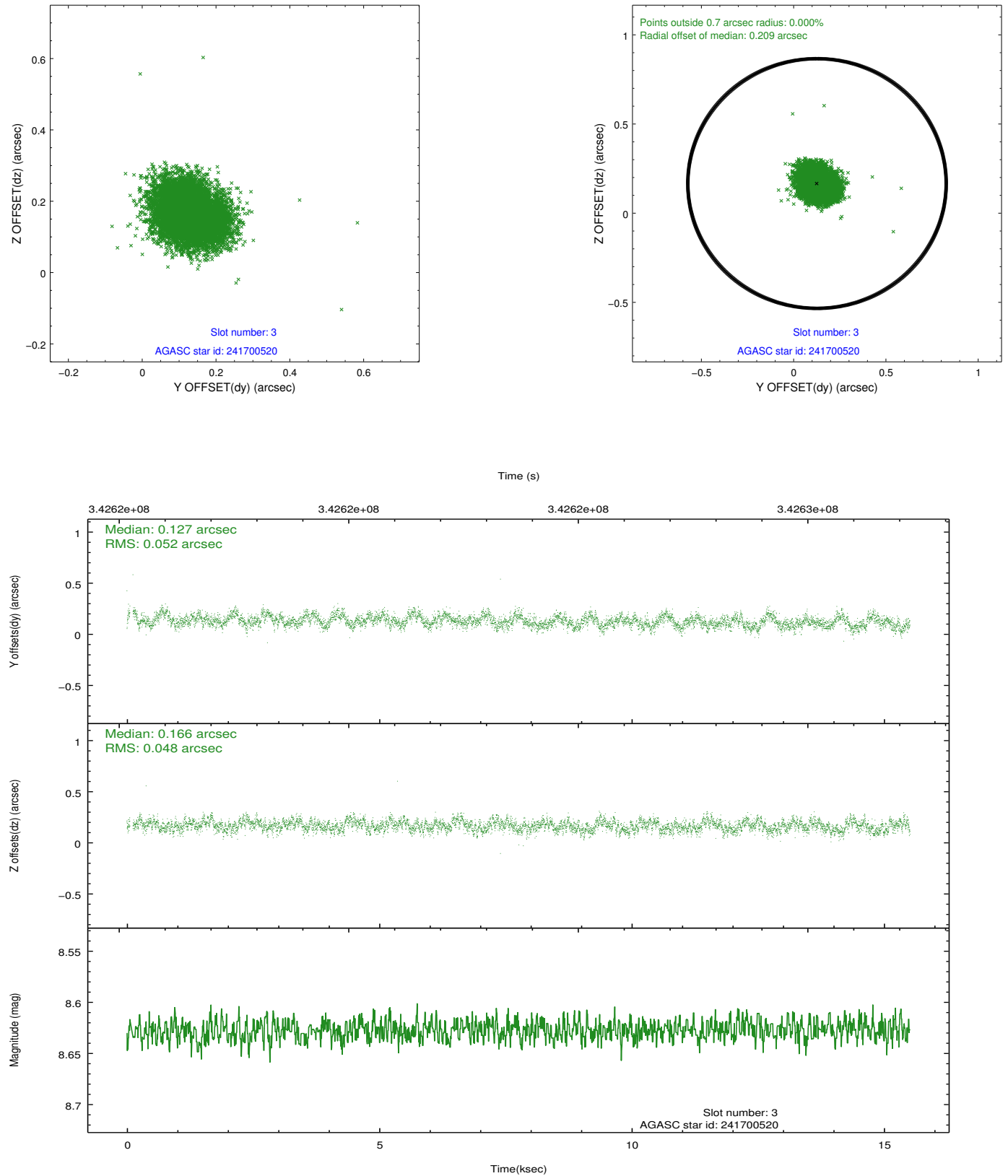


Slot Statistics

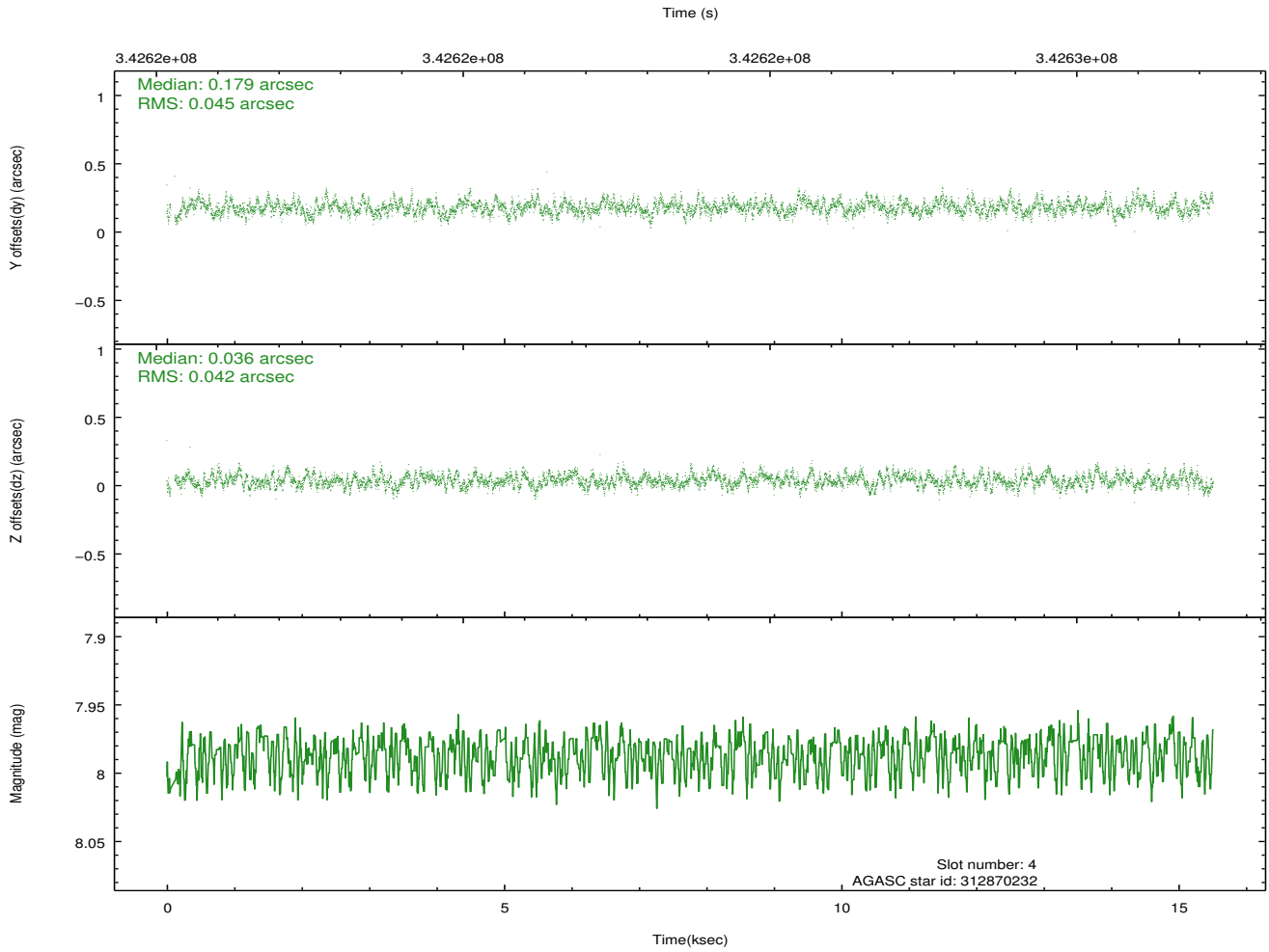
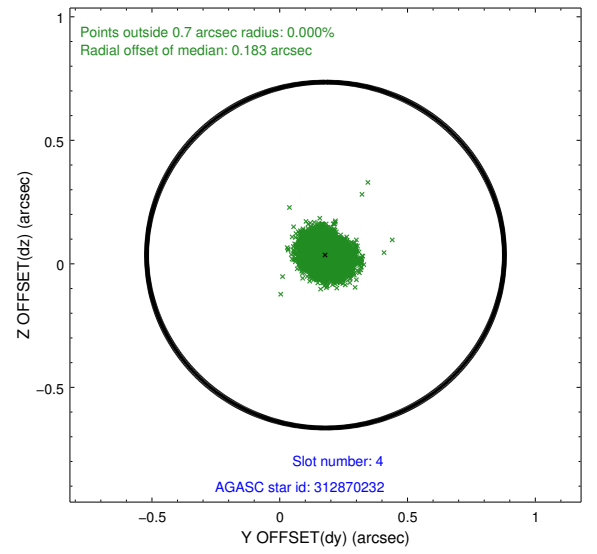
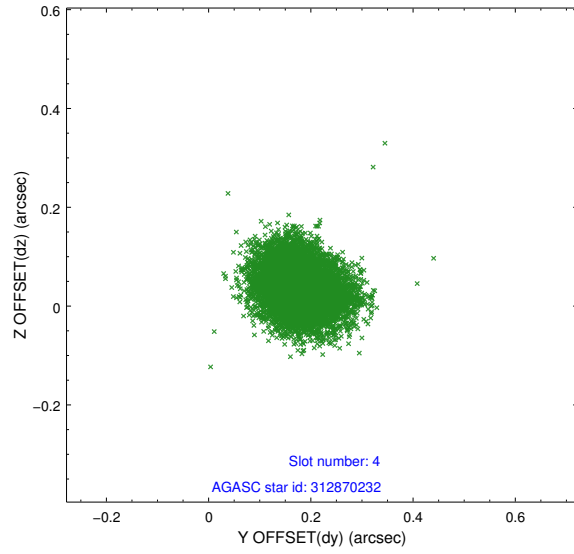
	status	id	mag	n_pts	med_dy	med_dz	drl
	FID	ACIS-S-2	6.92	3771	-0.025	-0.022	0.010
	FID	ACIS-S-4	7.01	3770	0.122	0.018	0.007
	FID	ACIS-S-5	7.04	3771	-0.129	0.013	0.009
	GUIDE	241700520	8.63	7537	0.127	0.166	0.075
	GUIDE	312870232	7.99	7539	0.179	0.036	0.067
	GUIDE	312872256	8.03	7538	-0.427	-0.215	0.060
	GUIDE	313012784	8.24	7539	0.117	0.012	0.061
0.0000.0000.0000.0000000.00000000.000.00							

2.4 Star Slots

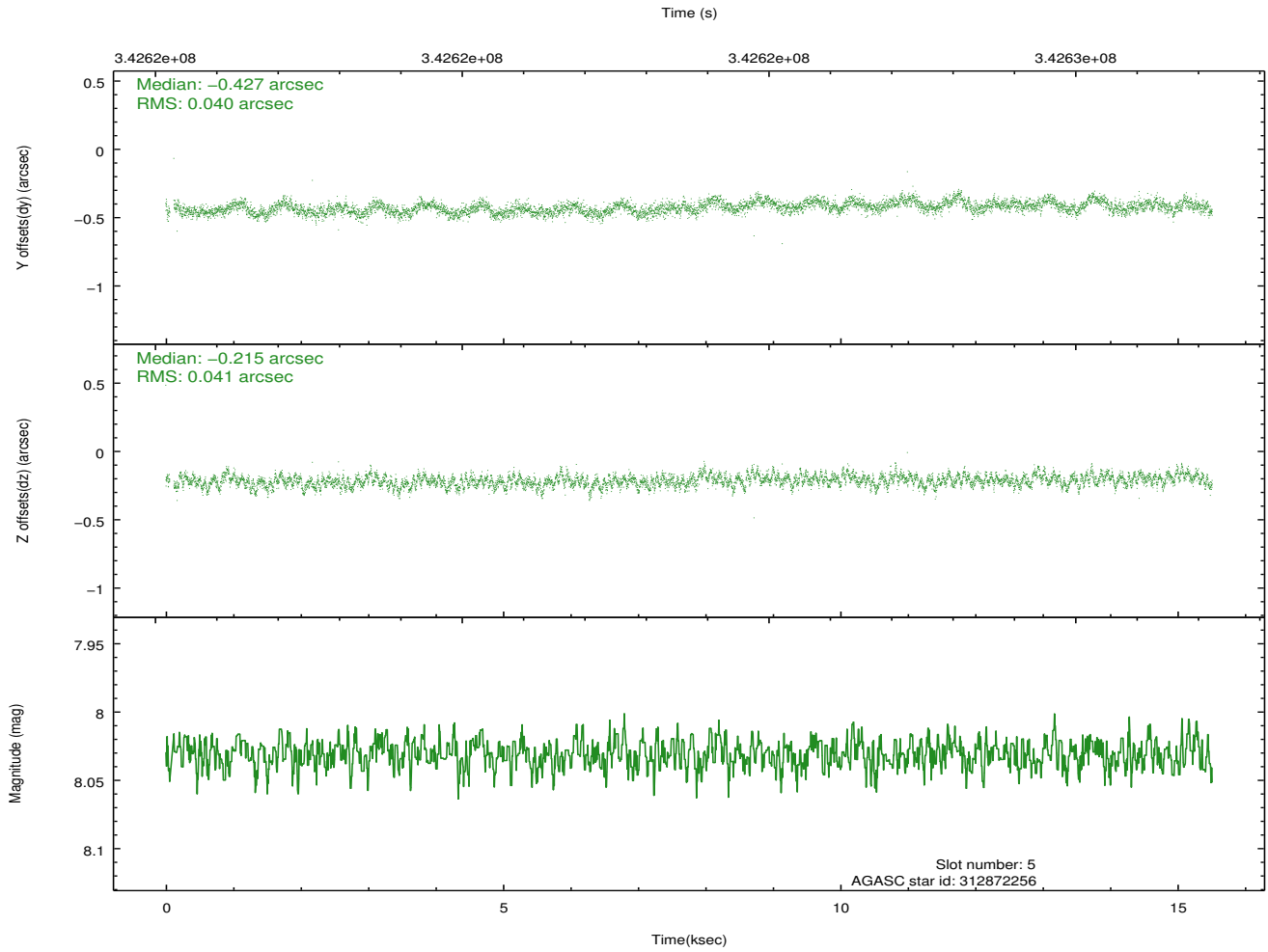
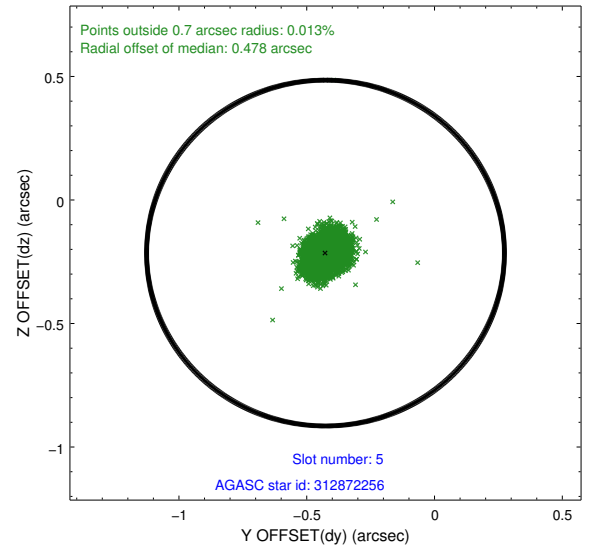
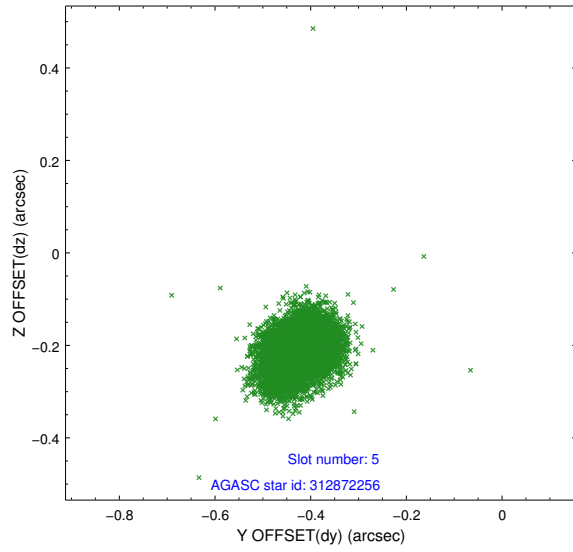
2.4.1 Slot 3



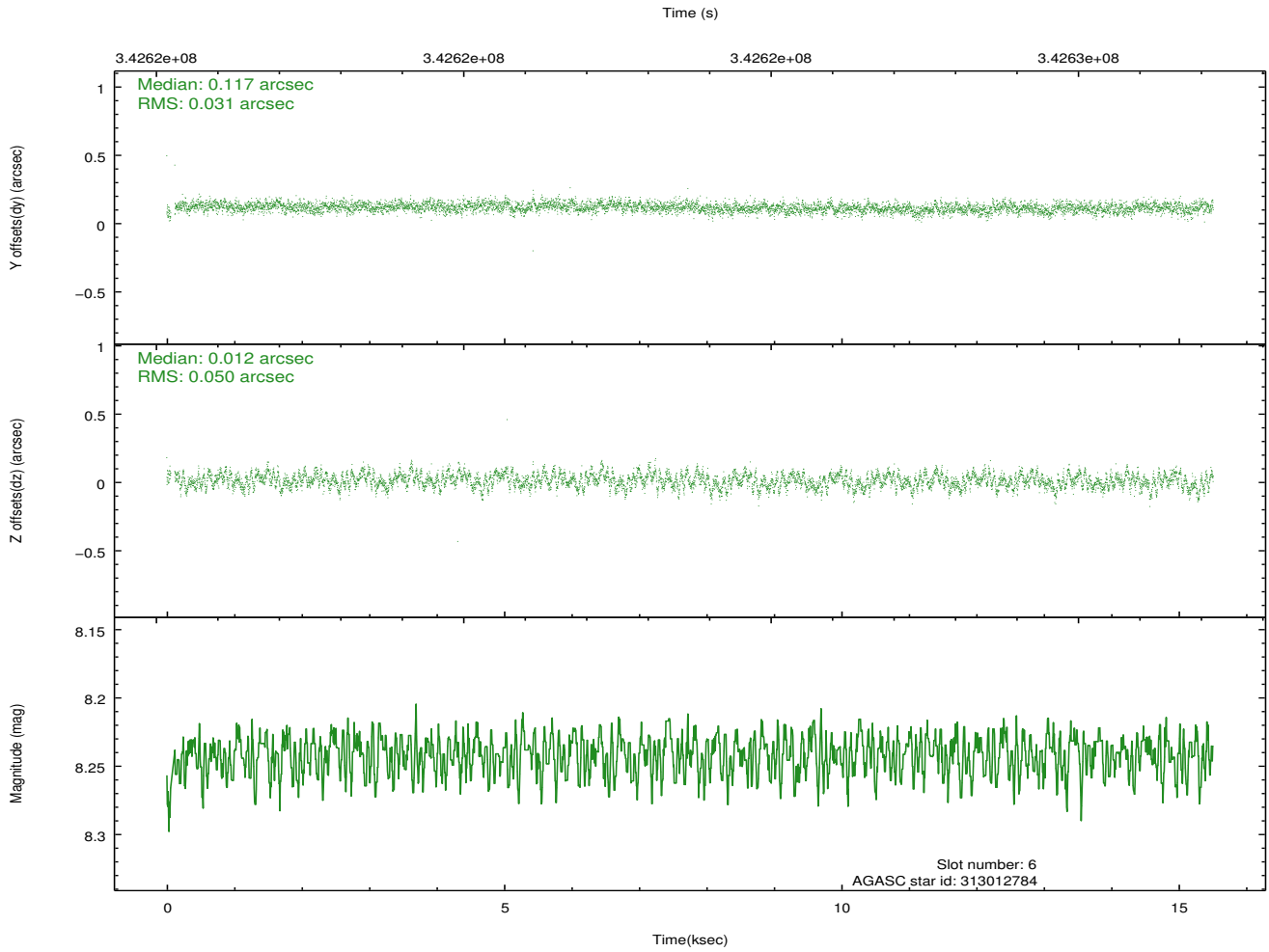
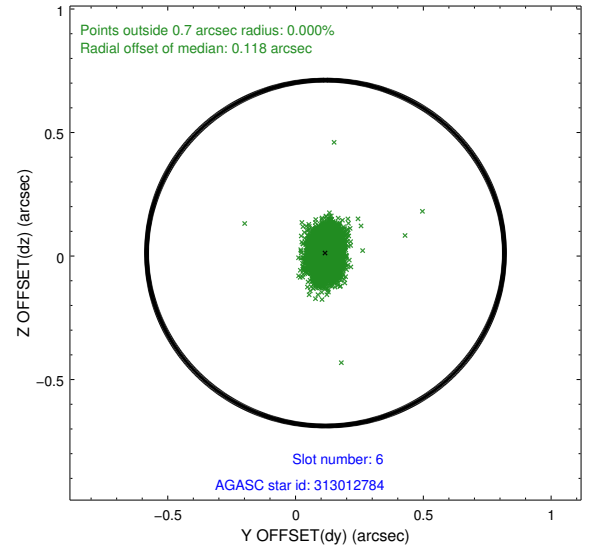
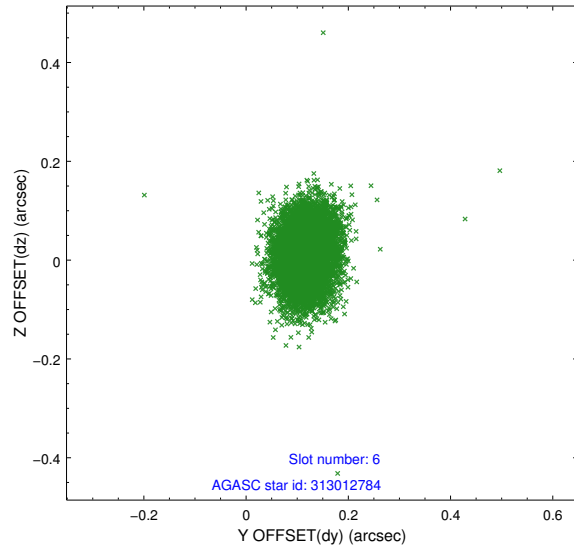
2.4.2 Slot 4



2.4.3 Slot 5

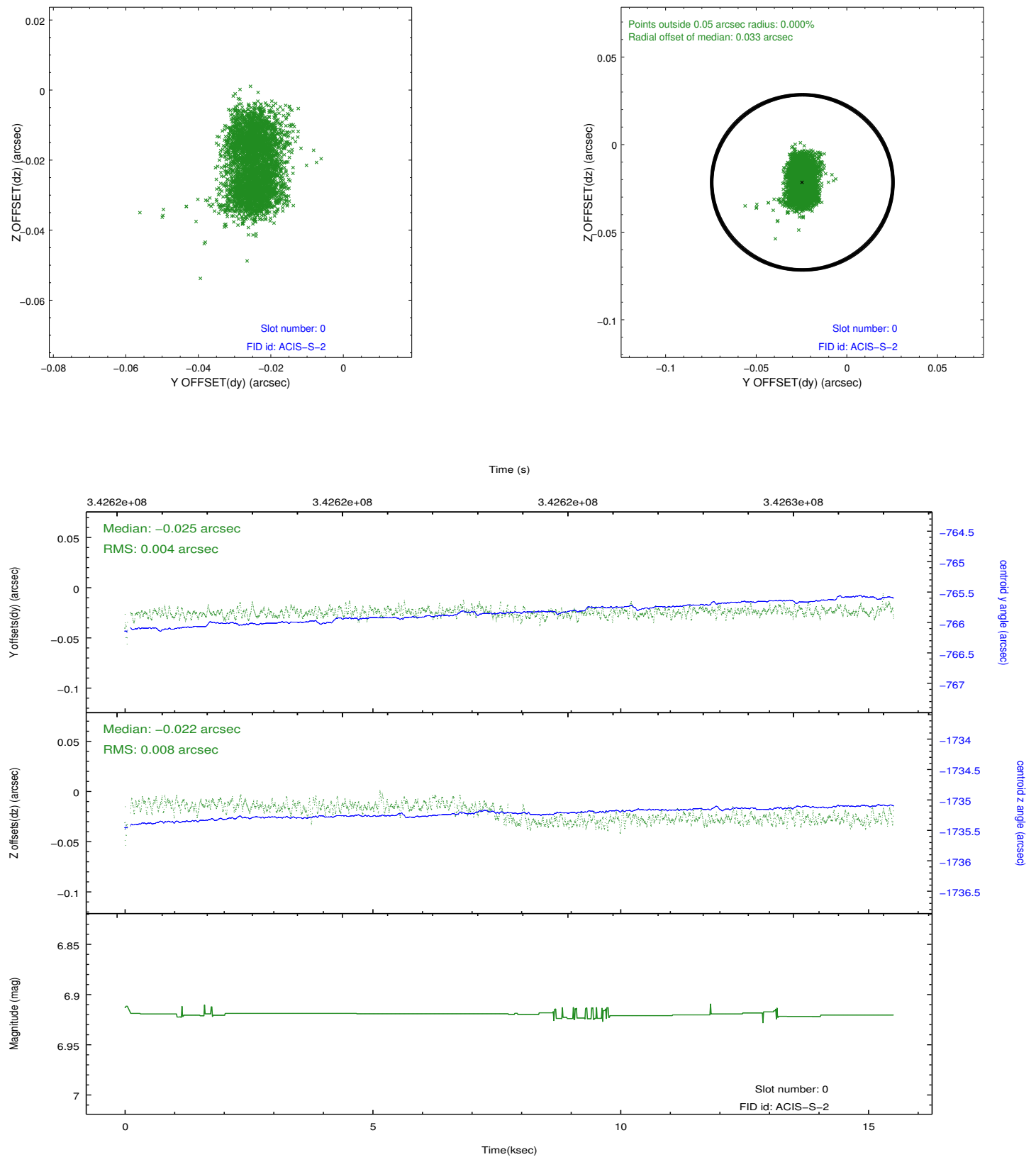


2.4.4 Slot 6

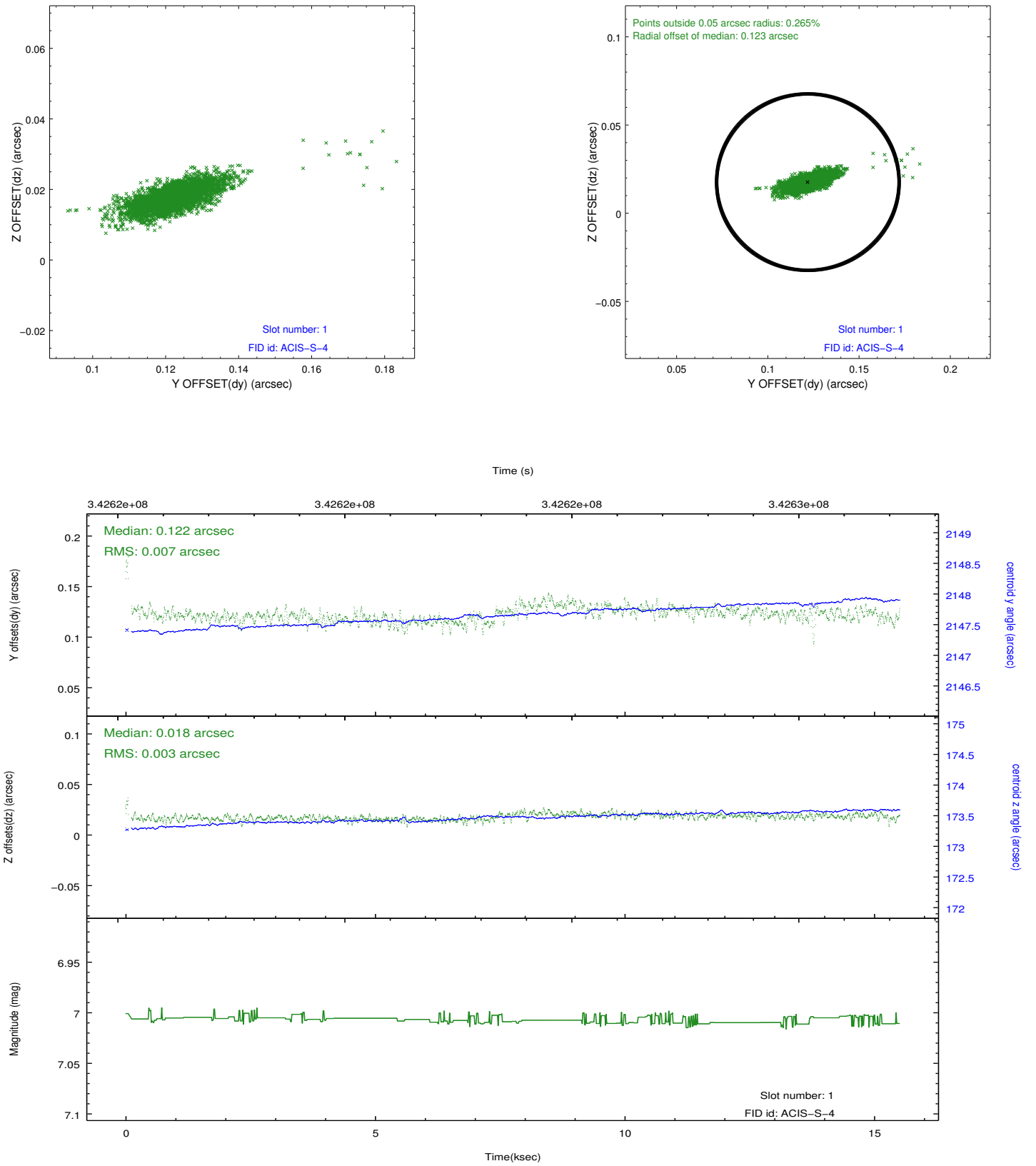


2.5 FID Slots

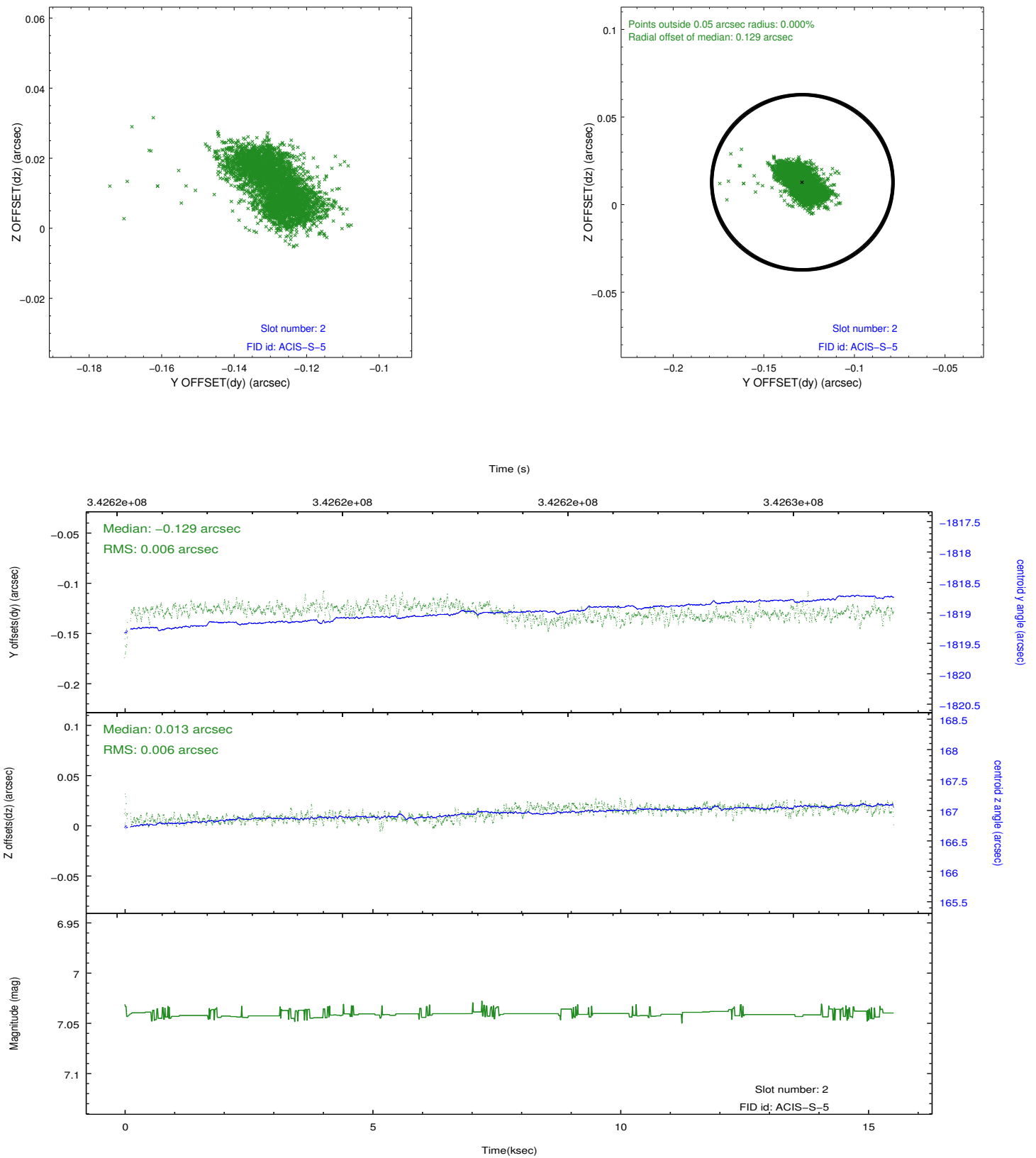
2.5.1 Slot 0



2.5.2 Slot 1



2.5.3 Slot 2



A Summary

A.1 Status

V&V Scientist	Jen Lauer
V&V Date (YYYY-MM-DD)	2012.05.31
V&V Edition	1
V&V Disposition and Status	OK
V&V Charge Time	15.394799

A.2 Comments

Coordinated with GEMINI/NORTH and CTIO. Optical photometry on target during observation using the Aspect Camera.