

# V&V Reference Report

## L2 ASCDS Version : 8.4.5

Observation 98 - L2 Version 5  
Chandra X-Ray Center

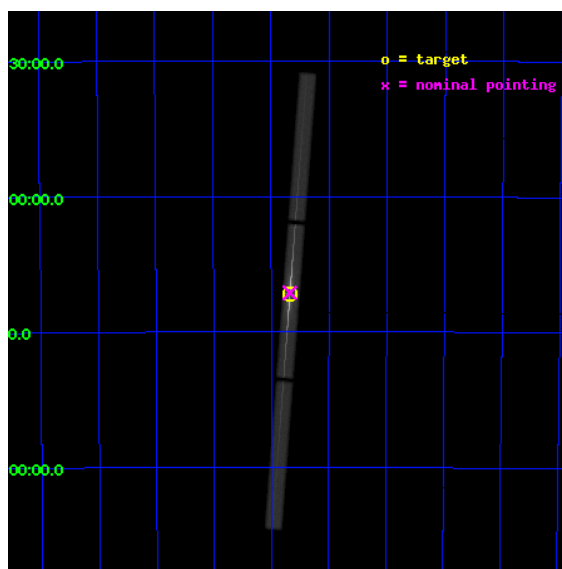
L2 Processing Date : Aug 24 2012

## Contents

<b>1</b>	<b>Front</b>	<b>2</b>
<b>2</b>	<b>OBI</b>	<b>3</b>
2.1	OBI . . . . .	3
2.1.1	Images . . . . .	3
2.1.2	Parameters . . . . .	4
2.1.3	Events . . . . .	4
2.2	Compared Parameters . . . . .	5
2.3	Aspect . . . . .	6
2.4	Star Slots . . . . .	9
2.4.1	Slot 3 . . . . .	9
2.4.2	Slot 4 . . . . .	10
2.4.3	Slot 5 . . . . .	11
2.4.4	Slot 6 . . . . .	12
2.4.5	Slot 7 . . . . .	13
2.5	FID Slots . . . . .	14
2.5.1	Slot 0 . . . . .	14
2.5.2	Slot 1 . . . . .	15
2.5.3	Slot 2 . . . . .	16
<b>3</b>	<b>Gratings</b>	<b>17</b>
3.1	LETG Arm . . . . .	17
<b>A</b>	<b>Summary</b>	<b>19</b>
A.1	Status . . . . .	19
A.2	Comments . . . . .	19

# 1 Front

seq_num	400011	Sequence number
obs_id	98	Observation id
title	SPECTRA AND MASS MEASURE FOR THE ULTRACOMPACT BINARY IN NGC 6624	P
observer	Dr. Stephen Murray	Principal investigator
object	NGC 6624	Source name
ra_targ	275.91875	Observer's specified target RA [deg]
dec_targ	-30.361111	Observer's specified target Dec [deg]
ra_nom	275.91859510367	Nominal RA [deg]
dec_nom	-30.356028371564	Nominal Dec [deg]
roll_nom	94.326048852349	Nominal Roll [deg]
revision	5	Processing version of data
ontime	15124.131802499	[s]
livetime	14951.228573875	Ontime multiplied by DTCOR
l2events	1819749	Number of level 2 events

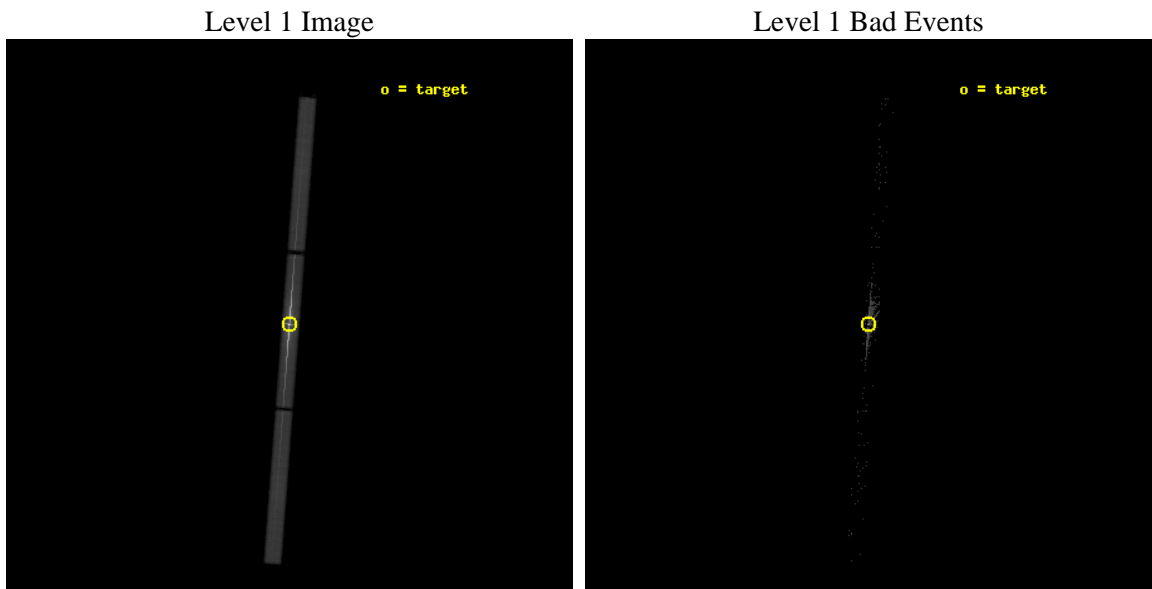




## 2 OBI

### 2.1 OBI

#### 2.1.1 Images



### 2.1.2 Parameters

obi_num	0	Obi number	sched_exp_time	15000.000000	[s] Scheduled observation exposure time
ascdsver	8.4.5	Processing system revision	ontime	15124.131802499	[s]
caldsver	4.5.1.1	&#160	l1events	2166887	Number of level 1 events
date	2012-08-24T05:08:42	Date and time of file creation			
revision	5	Processing version of data			

### 2.1.3 Events

Level 1 Events

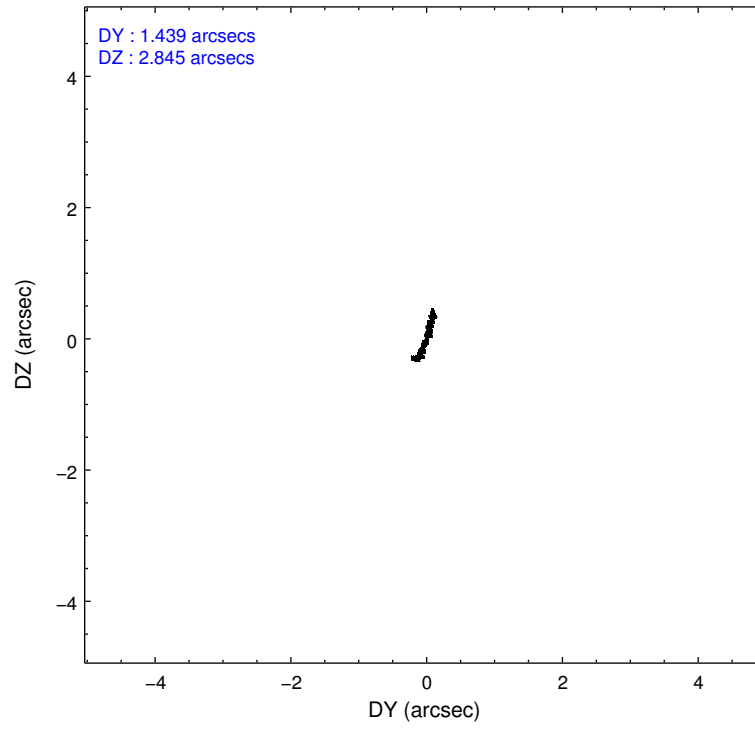
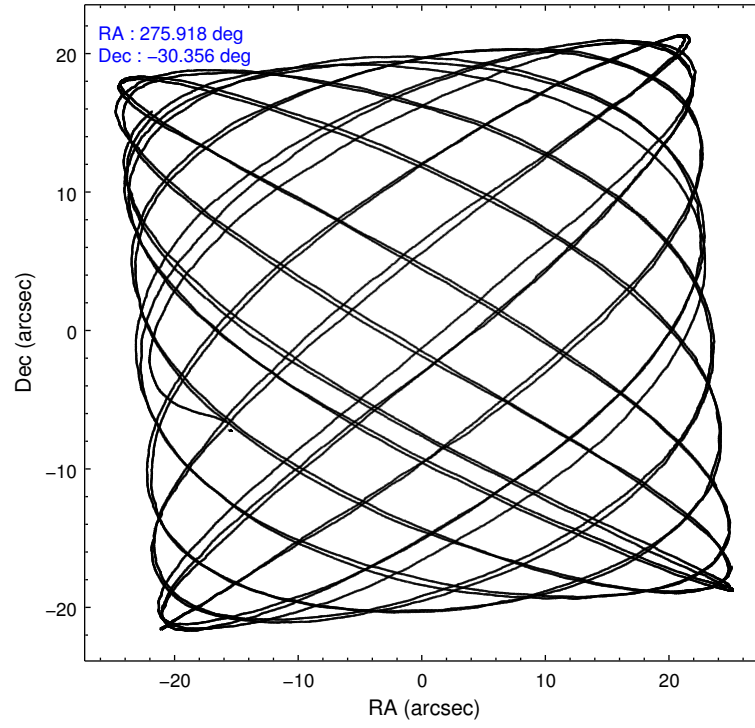
	<b>segment 1</b>	<b>segment 2</b>	<b>segment 3</b>
level 1 events	367806	1425850	373231
rejected events	8288	15642	8575
rejected %	2%	1%	2%

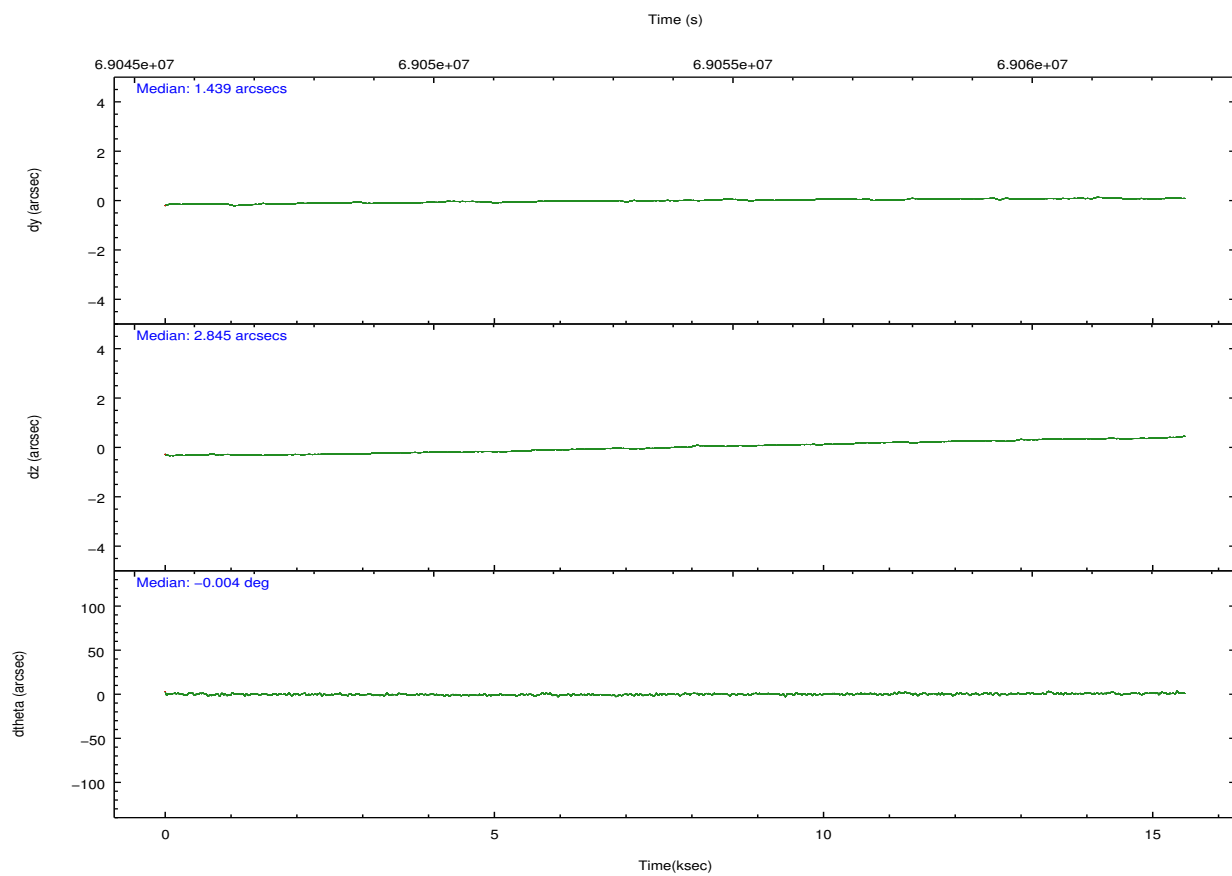
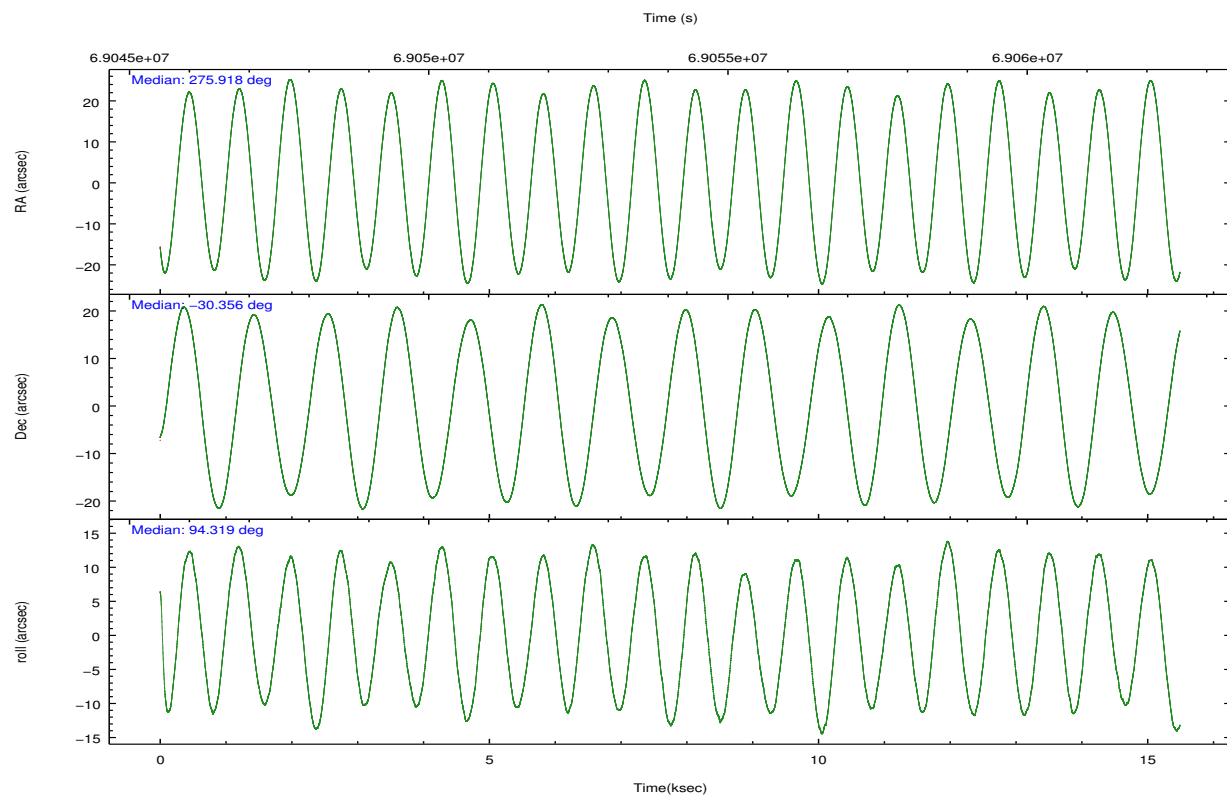
## 2.2 Compared Parameters

Parameter	Planned	Actual
Instrument	HRC	HRC
Detector	HRC-S	HRC-S
Grating	LETG	LETG
Data mode	OBSERVING	OBSERVING
Observation mode	POINTING	POINTING
[deg] Pointing RA	275.938530	275.9185951036683
[deg] Pointing Dec	-30.379227	-30.35602837156396
[deg] Pointing Roll	94.268781	94.32604885234875
[mm] SIM focus pos	-1.429586	-1.428180813131781
[mm] SIM defocus	0.1037507710433287	0.1051558262725154
[mm] SIM translation stage pos	250.455976	250.466033080201
[mm] SIM translation stage offset	0	-0.01005468664627074
[s] Observation start time (MET)	69046776.184000	69045842.194261
Observation start date	2000-03-10T03:38:32	2000-03-10T03:24:02
[s] Observation end time (MET)	69061776.184000	69062112.53235599
Observation end date	2000-03-10T07:48:32	2000-03-10T07:55:12

Parameter	Planned	Actual
Obspar format version number	7	7
Obspar file type	PREDICTED	ACTUAL
Obspar update status	NONE	UPDATED

## 2.3 Aspect



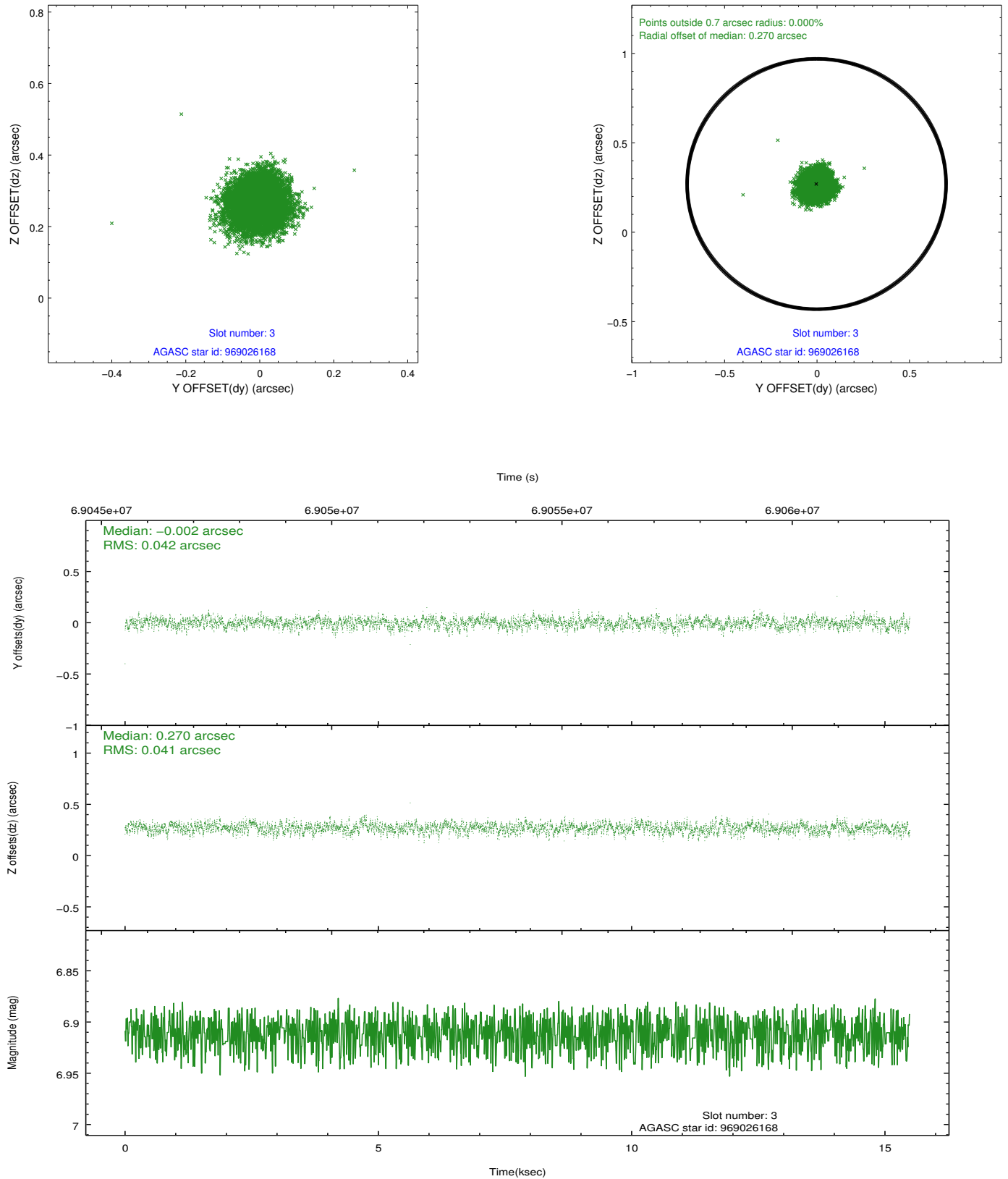


### Slot Statistics

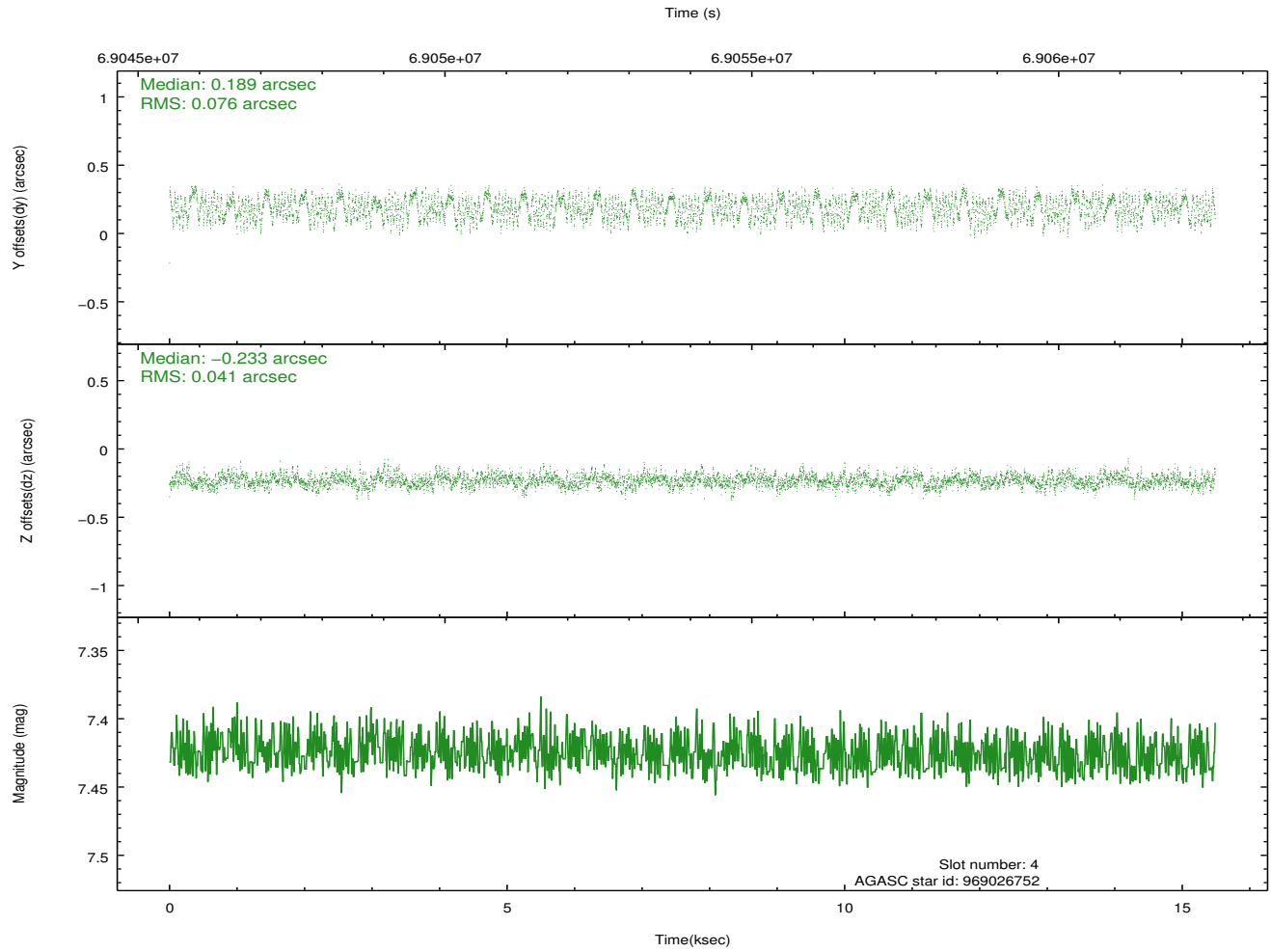
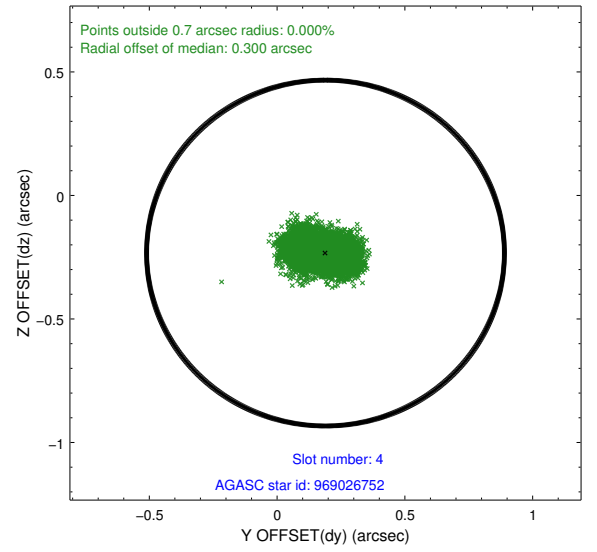
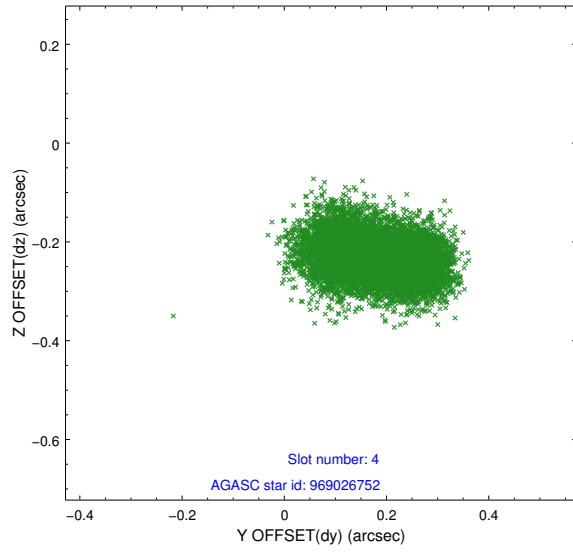
slot	status	id	mag	n_pts	med_dy	med_dz	dr1	dr2	ra	dec	mean_y	mean_z
0	FID	HRC-S-2	6.95	3778	0.119	-0.128	0.010	0.021	0.000000	0.000000	1244.24	-443.91
1	FID	HRC-S-3	6.98	3779	0.168	-0.105	0.006	0.012	0.000000	0.000000	-1157.80	578.13
2	FID	HRC-S-4	6.91	3779	0.118	-0.062	0.010	0.018	0.000000	0.000000	1242.49	581.04
3	GUIDE	969026168	6.91	7556	-0.002	0.270	0.063	0.098	276.670048	-30.393325	-225.75	-2261.14
4	GUIDE	969026752	7.43	7556	0.189	-0.233	0.094	0.143	275.318545	-30.941468	-1880.35	2058.93
5	GUIDE	900337624	9.20	7554	-0.184	0.298	0.091	0.149	276.569844	-29.732579	2170.04	-2140.68
6	GUIDE	898633728	8.98	7544	-0.284	-0.279	0.074	0.119	275.334468	-29.851261	2031.67	1739.06
7	GUIDE	969020224	9.86	7548	0.285	-0.056	0.117	0.185	275.682614	-30.885320	-1757.48	923.68

## 2.4 Star Slots

### 2.4.1 Slot 3

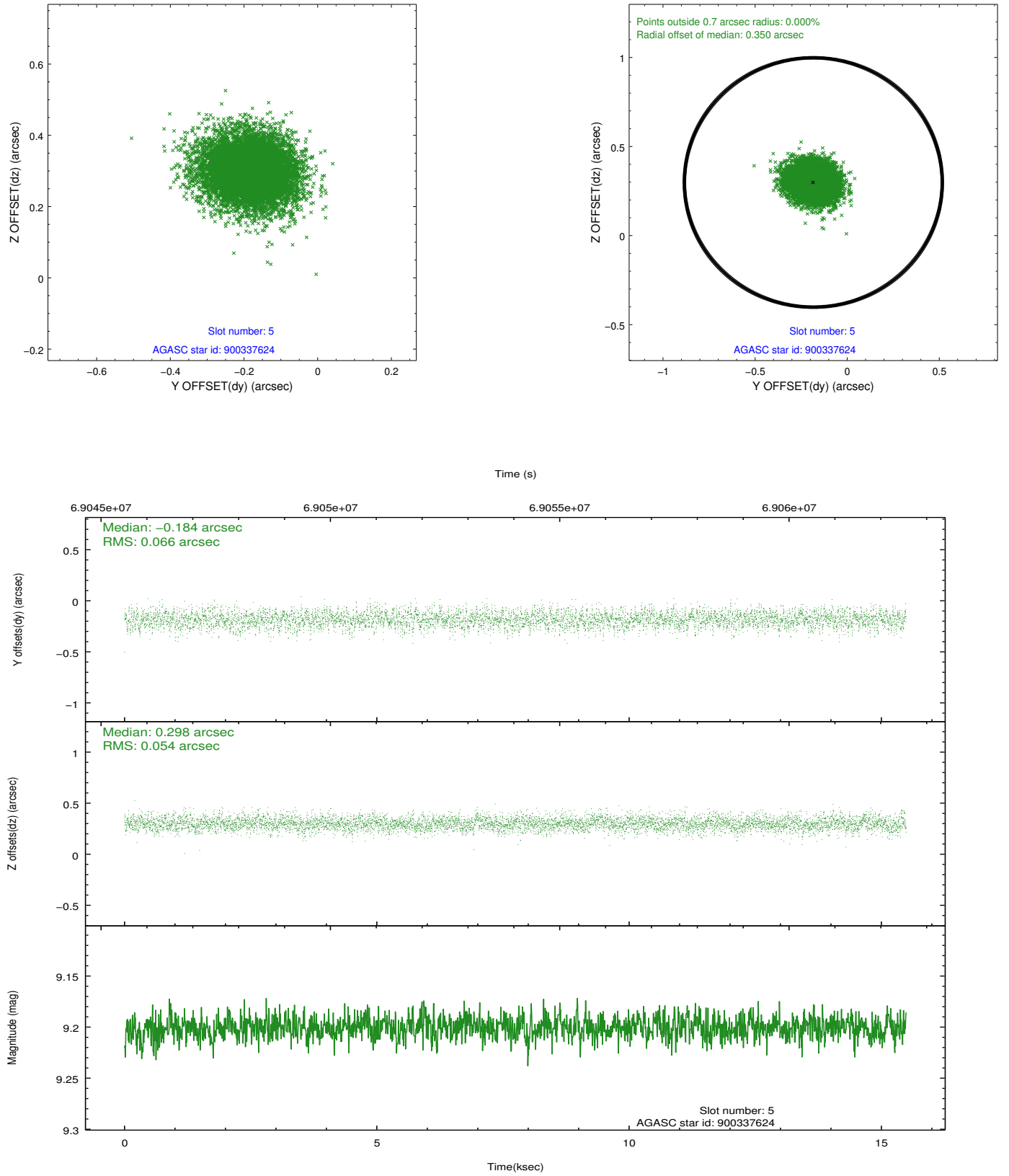


## 2.4.2 Slot 4

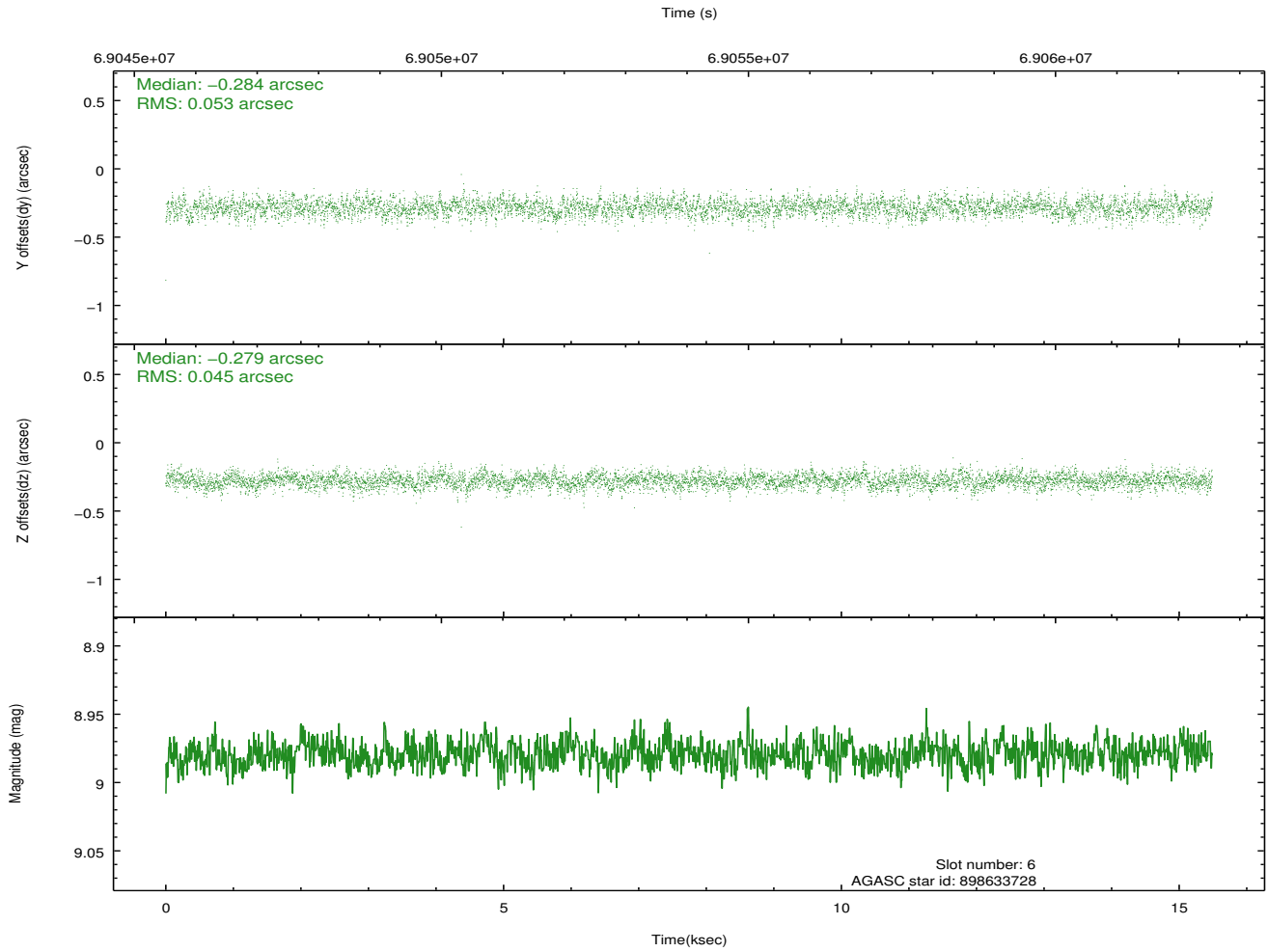
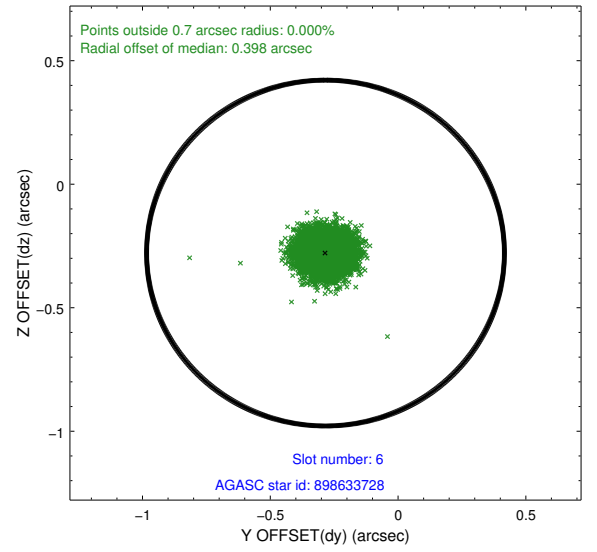
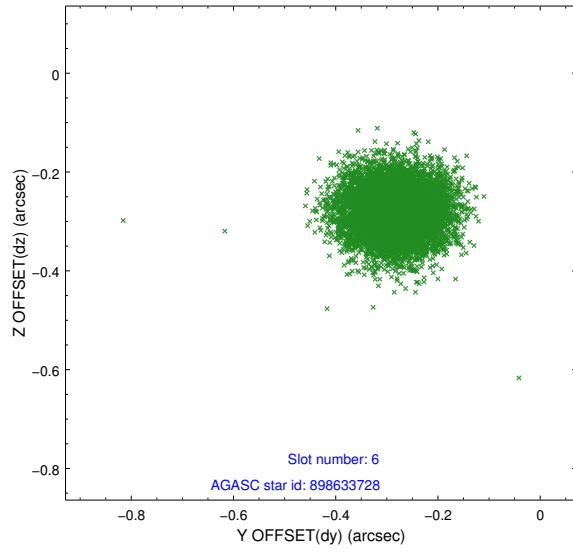




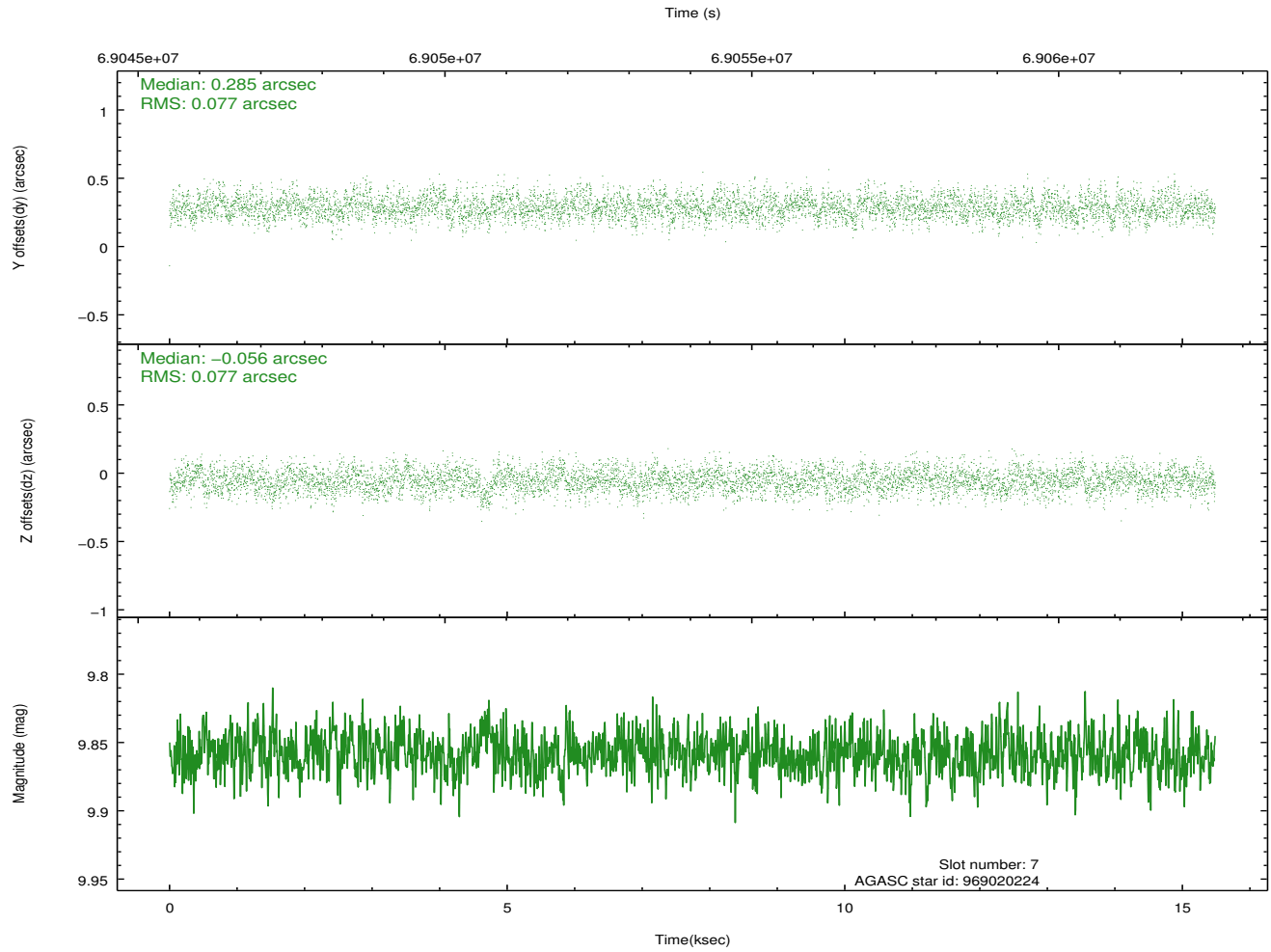
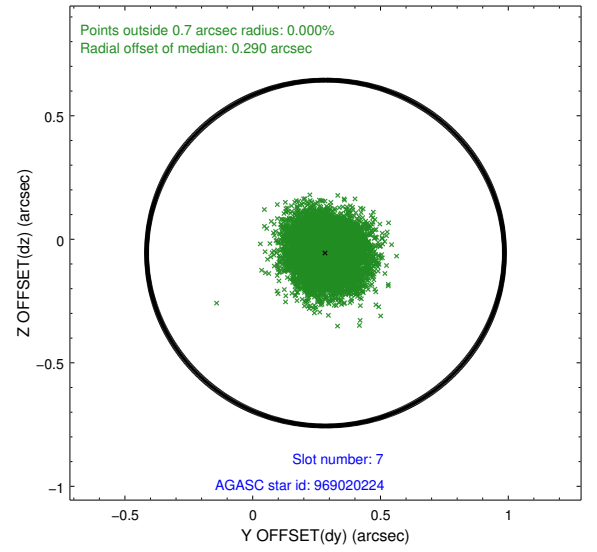
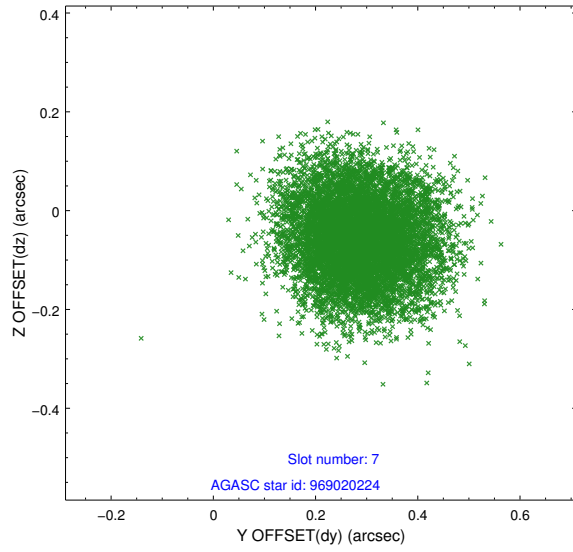
### 2.4.3 Slot 5



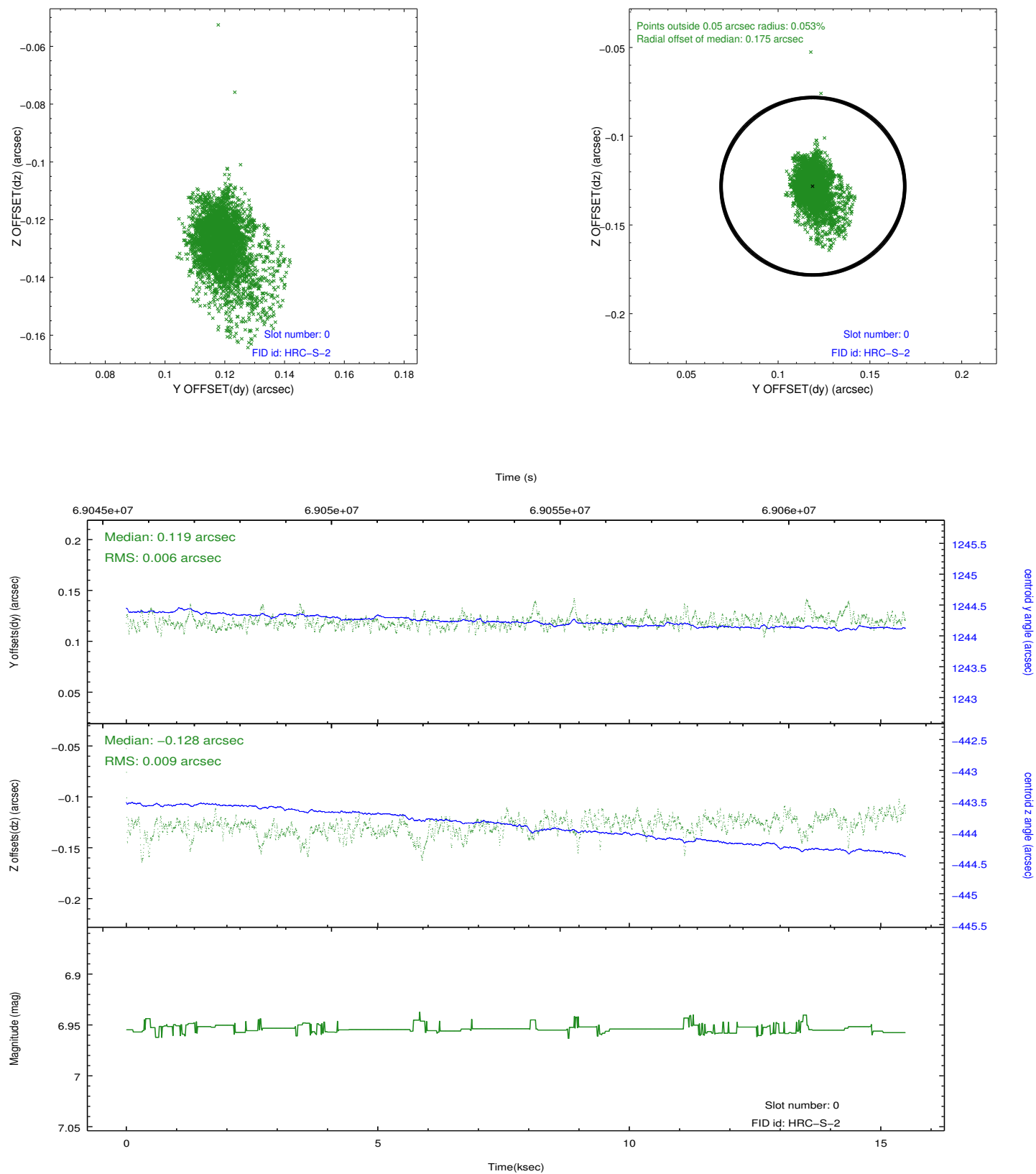
## 2.4.4 Slot 6



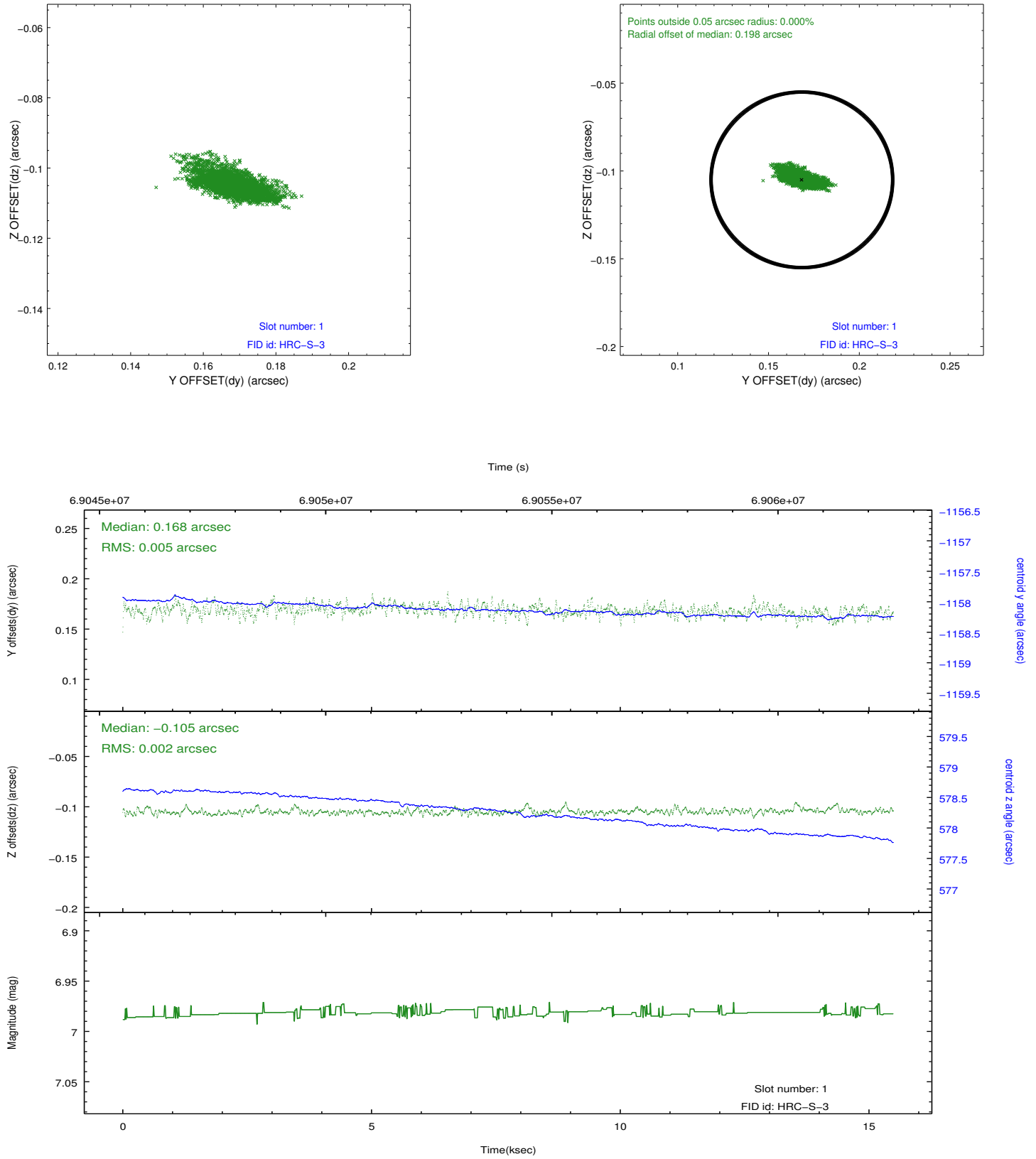
## 2.4.5 Slot 7



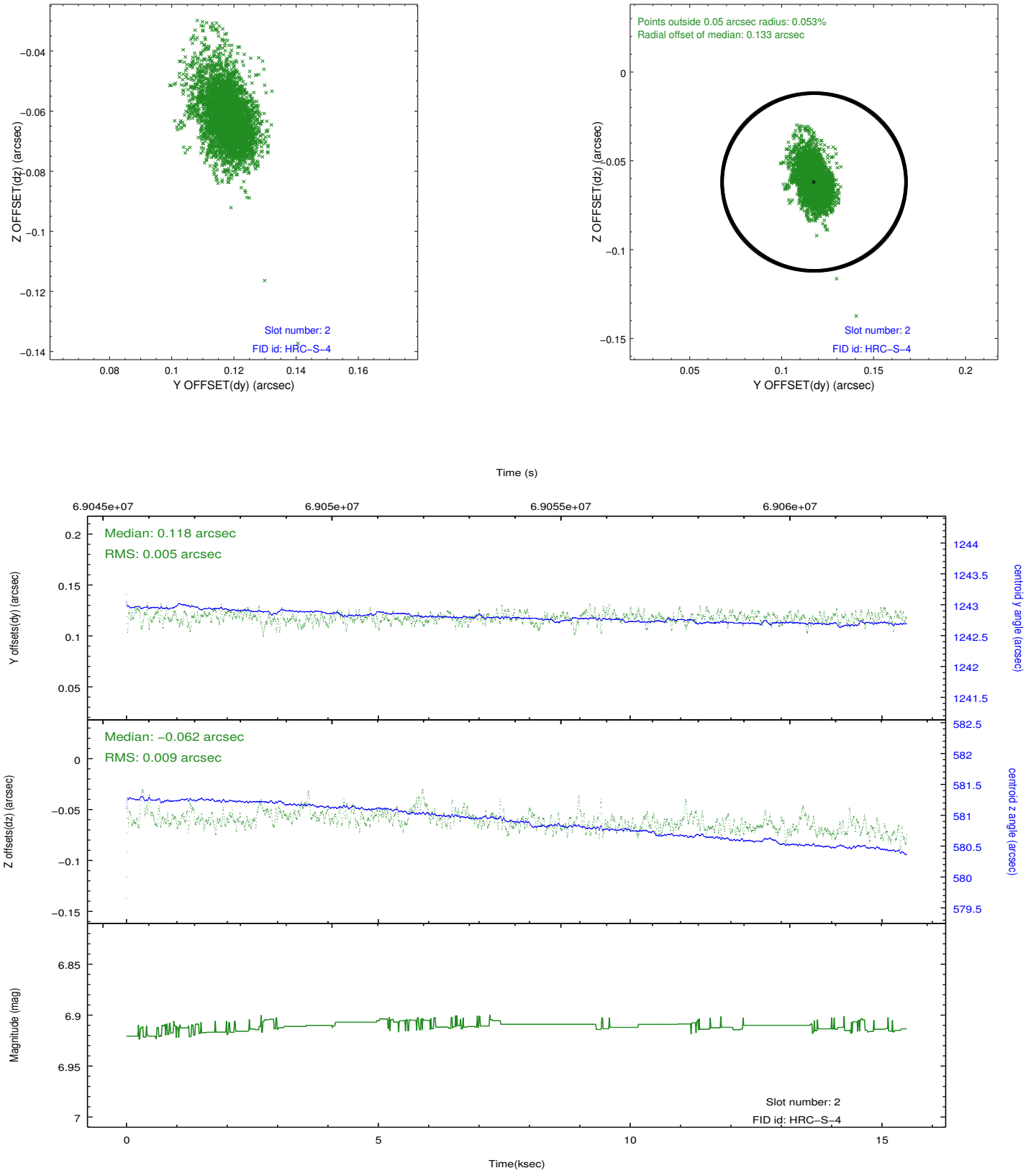
### 2.5.1 Slot 0



## 2.5.2 Slot 1

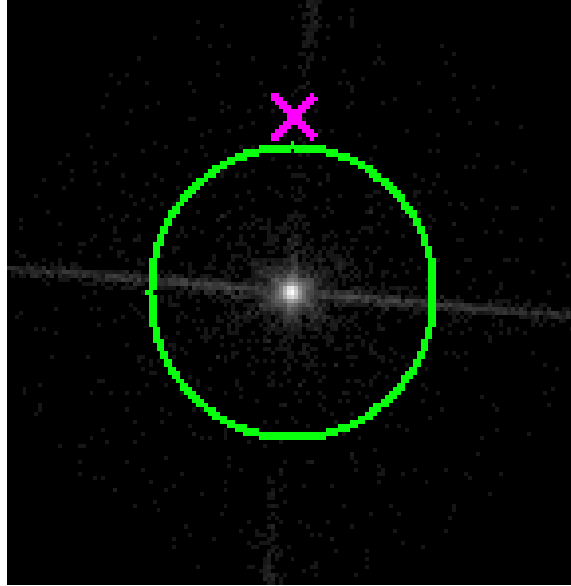


### 2.5.3 Slot 2

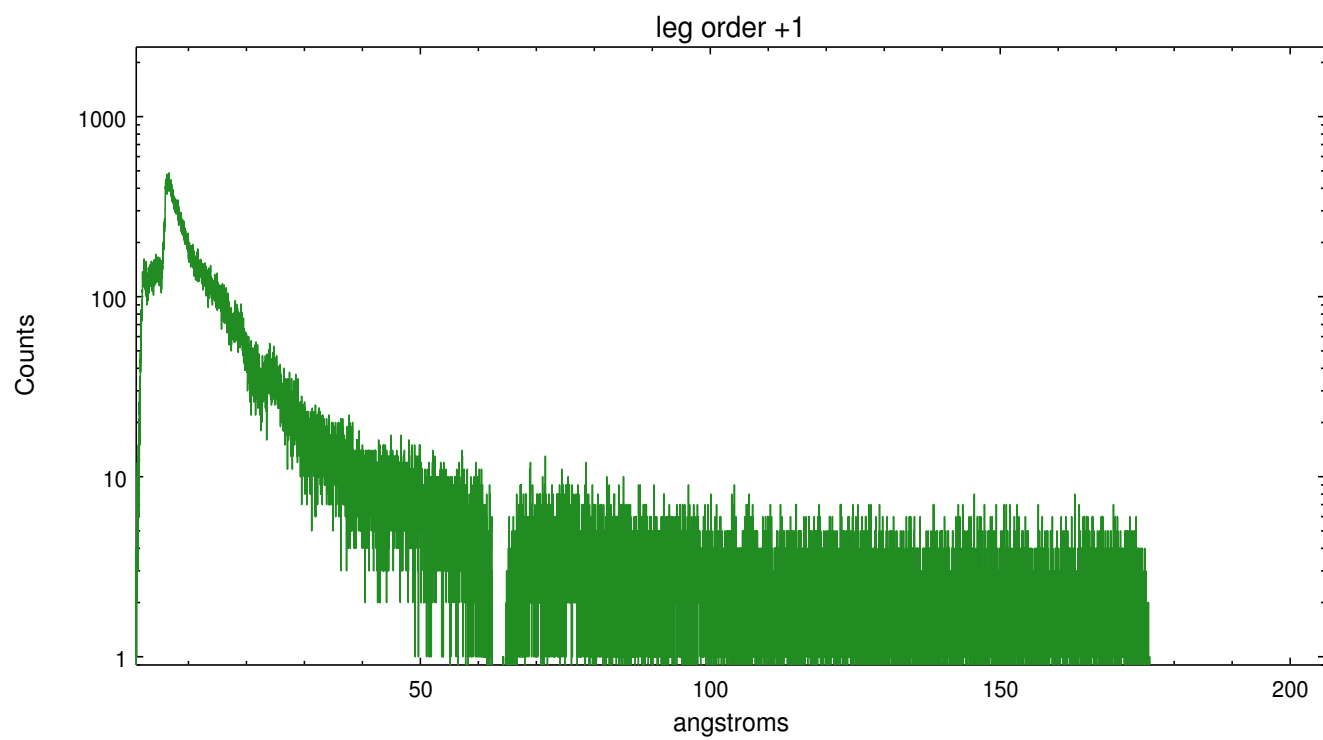
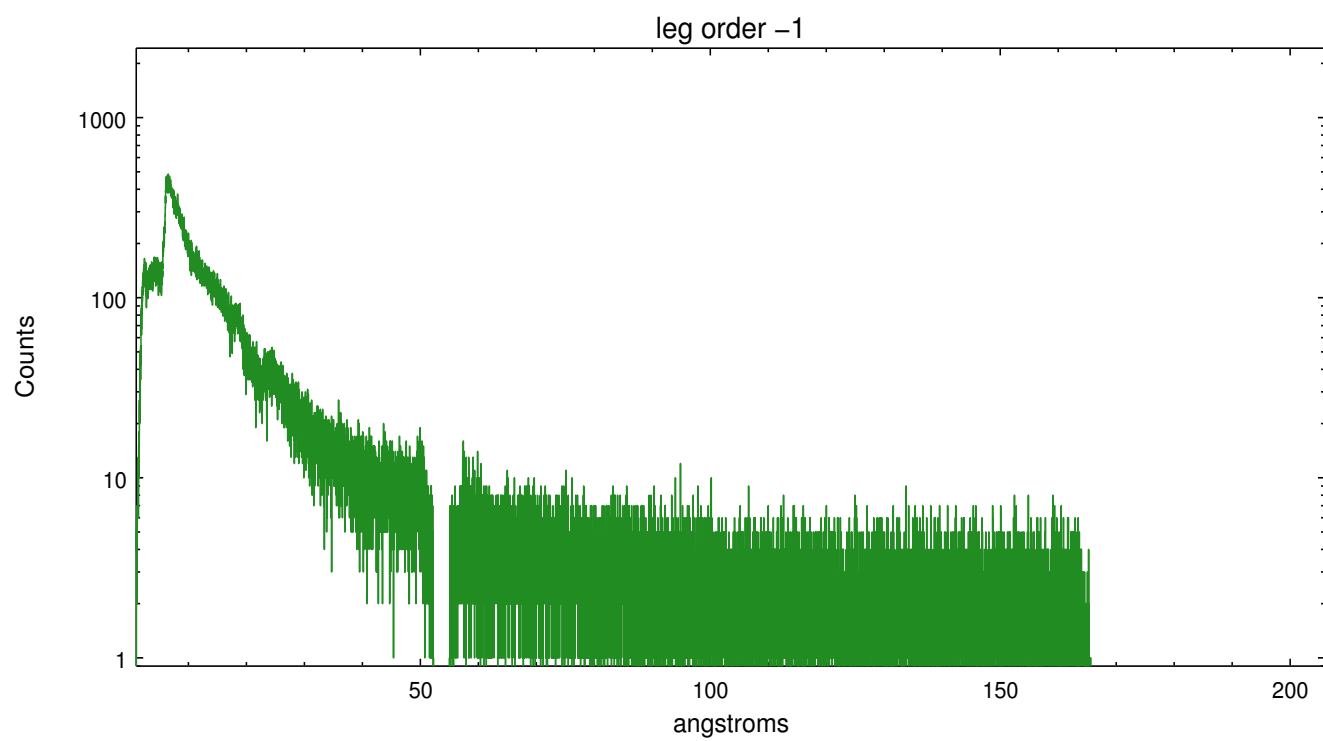


## 3 Gratings

### 3.1 LETG Arm



LETG Zero Order





## A Summary

### A.1 Status

V&V Scientist	Joy Nichols
V&V Date (YYYY-MM-DD)	2012.08.24
V&V Edition	1
V&V Disposition and Status	OK
V&V Charge Time	15.12

### A.2 Comments

Analysis caveat: strong hard continuum (2-10A) will cause severe overlapping-order confusion.