

V&V Reference Report

L2 ASCDS Version : 8.4.5

Observation 938 - L2 Version 3
Chandra X-Ray Center

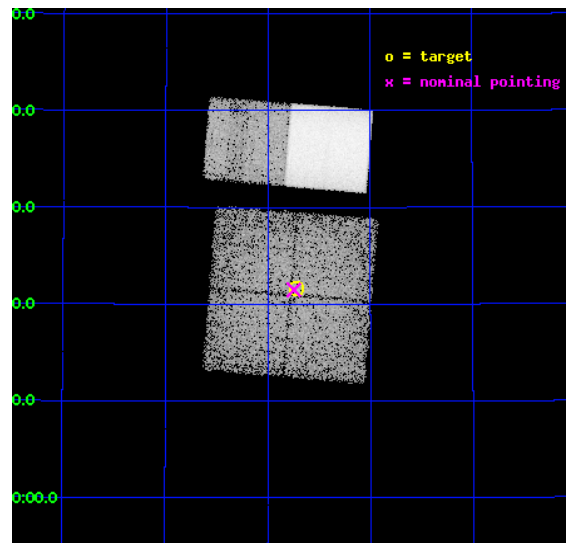
L2 Processing Date : Sep 5 2012

Contents

1	Front	2
2	OBI	3
2.1	OBI	3
2.1.1	Images	3
2.1.2	Bias	3
2.1.3	Parameters	4
2.1.4	Events	4
2.2	Compared Parameters	5
2.3	Aspect	6
2.4	Star Slots	9
2.4.1	Slot 3	9
2.4.2	Slot 4	10
2.4.3	Slot 5	11
2.4.4	Slot 6	12
2.4.5	Slot 7	13
2.5	FID Slots	14
2.5.1	Slot 0	14
2.5.2	Slot 1	15
2.5.3	Slot 2	16
A	Summary	17
A.1	Status	17
A.2	Comments	17

1 Front

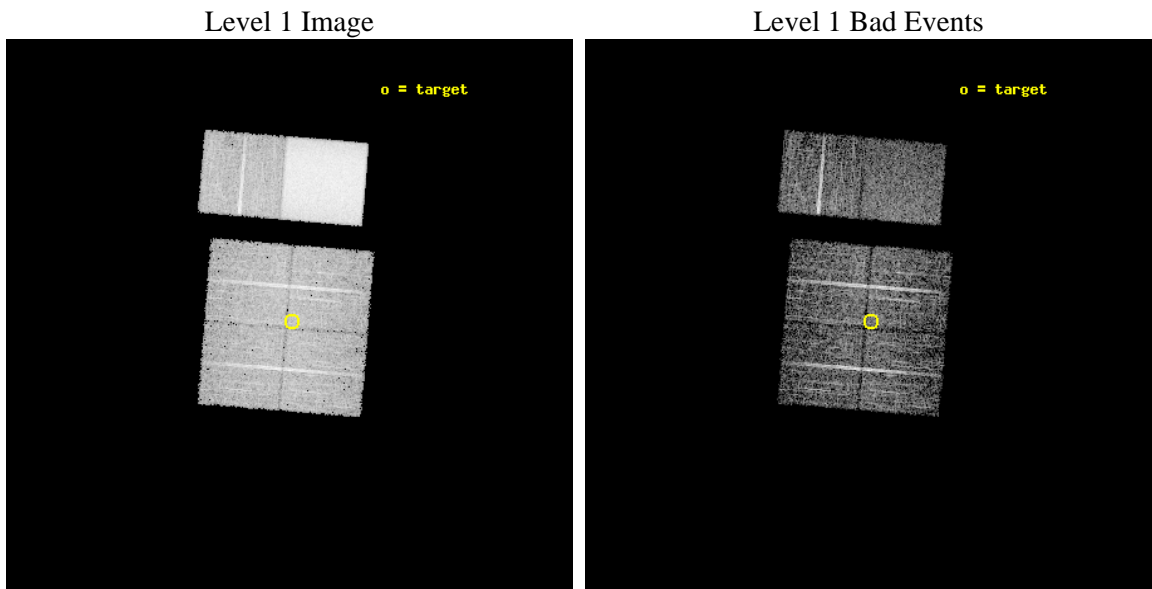
seq_num	900010	Sequence number
obs_id	938	Observation id
title	AXAF OBSERVATION OF FAINT HARD X-RAY SOURCES DISCOVERED WITH ASCA	
observer	Dr. Tadayuki Takahashi	Principal investigator
object	AX J1227+4421	Source name
dtcycle	0	
cycle	P	events from which exps? Prim/Second/Both
ra_targ	186.93	Observer's specified target RA [deg]
dec_targ	44.359806	Observer's specified target Dec [deg]
ra_nom	186.93638596429	Nominal RA [deg]
dec_nom	44.358254850933	Nominal Dec [deg]
roll_nom	4.7304399280981	Nominal Roll [deg]
revision	3	Processing version of data
ontime	5644.2755131125	Sum of GTIs [s]
livetime	5572.8042979908	Livetime [s]
ontime0	5653.8754333556	Sum of GTIs [s]
ontime1	5657.1578723043	Sum of GTIs [s]
ontime2	5569.6920488477	Sum of GTIs [s]
ontime3	5644.2755131125	Sum of GTIs [s]
ontime6	5676.7673948705	Sum of GTIs [s]
ontime7	5919.7993092835	Sum of GTIs [s]
l2events	174873	Number of level 2 events



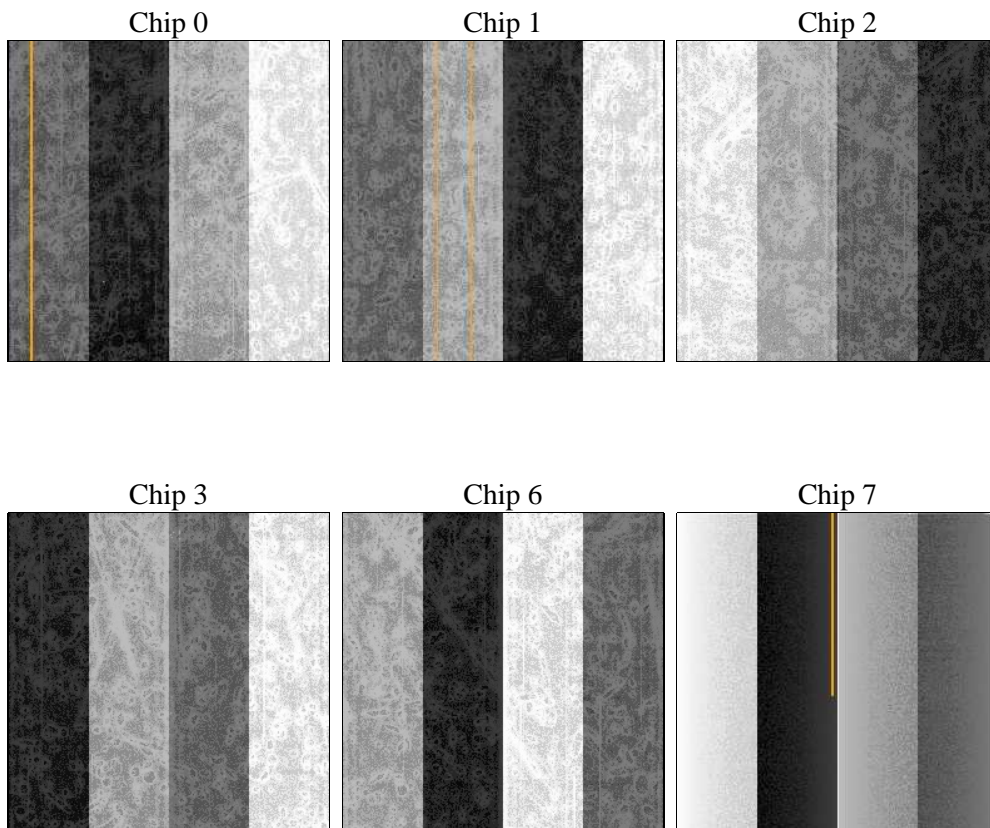
2 OBI

2.1 OBI

2.1.1 Images



2.1.2 Bias



2.1.3 Parameters

obi_num	0	Obi number	sched_exp_time	6338.118000	[s] Scheduled observation exposure time
ascdsver	8.4.5	Processing system revision	ontime	5644.2755131125	Sum of GTIs [s]
caldbver	4.5.1.1	 	ontime0	5653.8754333556	Sum of GTIs [s]
date	2012-09-05T15:05:56	Date and time of file creation	ontime1	5657.1578723043	Sum of GTIs [s]
revision	3	Processing version of data	ontime2	5569.6920488477	Sum of GTIs [s]
			ontime3	5644.2755131125	Sum of GTIs [s]
			ontime6	5676.7673948705	Sum of GTIs [s]
			ontime7	5919.7993092835	Sum of GTIs [s]
			l1events	355424	Number of level 1 events

2.1.4 Events

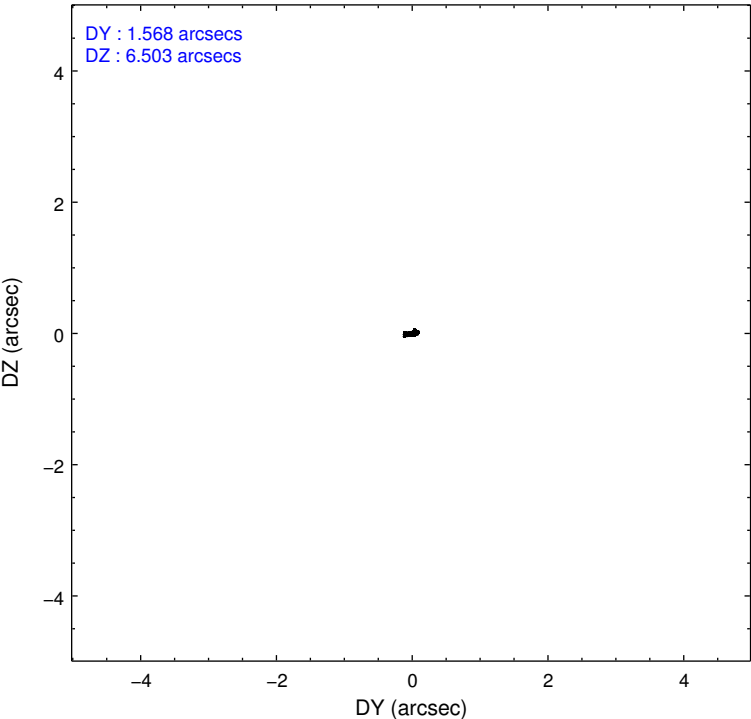
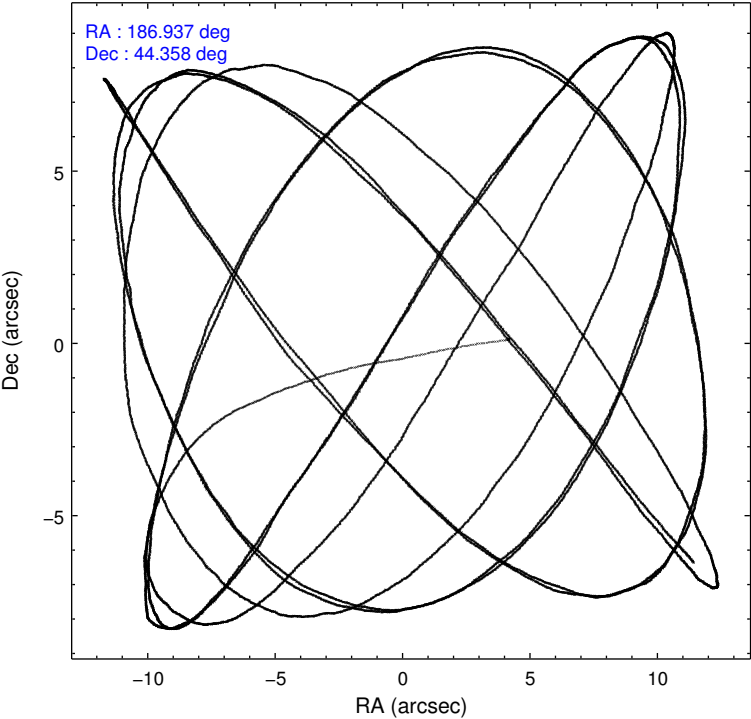
	ccd 0	ccd 1	ccd 2	ccd 3	ccd 6	ccd 7		ccd 0	ccd 1	ccd 2	ccd 3	ccd 6	ccd 7
level 1 events	35647	37385	39297	39216	46141	157738	grade 0 events	6006	6106	5934	5695	10391	15502
rejected events	26416	27733	30226	30276	31624	28442		16%	16%	15%	14%	22%	9%
rejected %	74%	74%	76%	77%	68%	18%	grade 1 events	17	31	44	39	43	48
								0%	0%	0%	0%	0%	0%
							grade 2 events	1572	1657	1530	1574	2164	22802
								4%	4%	3%	4%	4%	14%
							grade 3 events	413	497	424	459	510	10126
								1%	1%	1%	1%	1%	6%
							grade 4 events	464	506	429	468	511	10273
								1%	1%	1%	1%	1%	6%
							grade 5 events	1234	1299	1125	1285	1415	4797
								3%	3%	2%	3%	3%	3%
							grade 6 events	794	905	762	756	957	70701
								2%	2%	1%	1%	2%	44%
							grade 7 events	25147	26384	29049	28940	30150	23489
								70%	70%	73%	73%	65%	14%

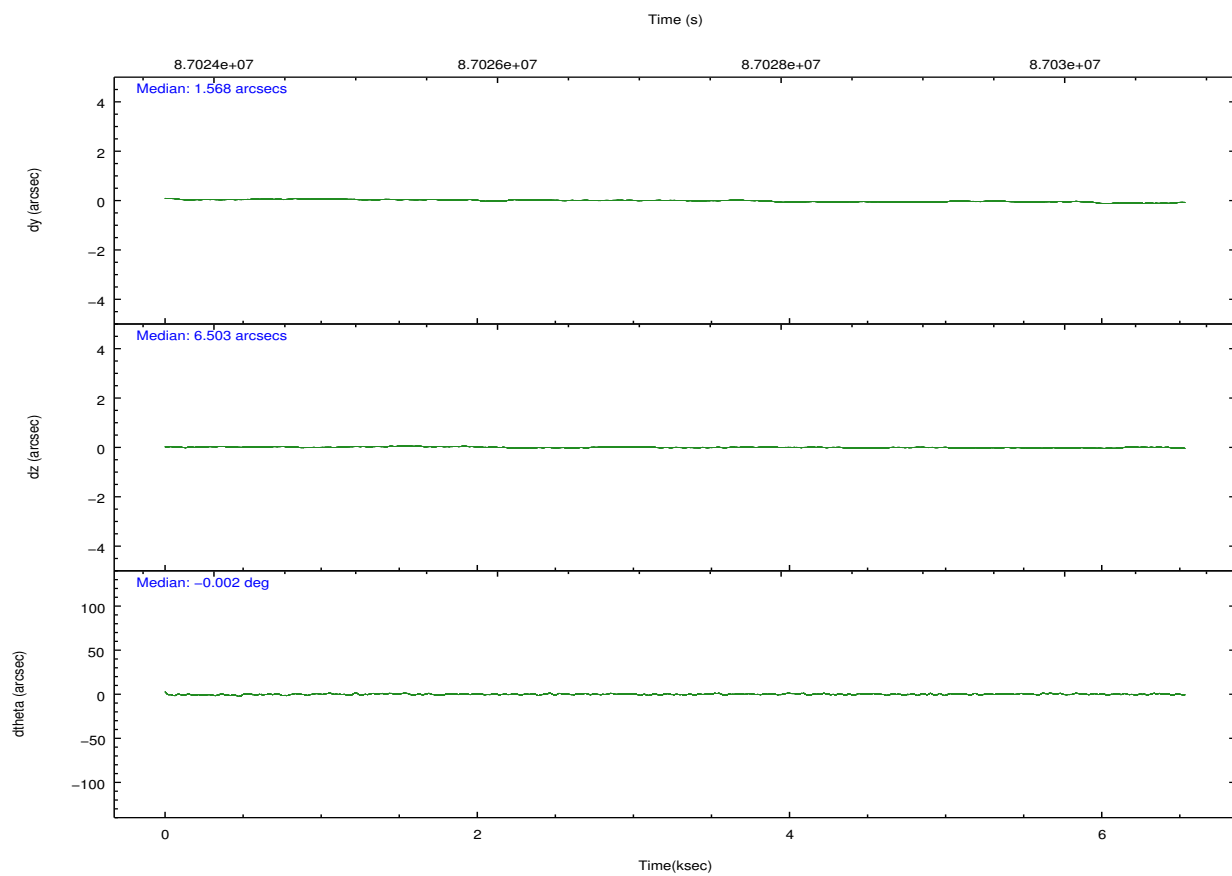
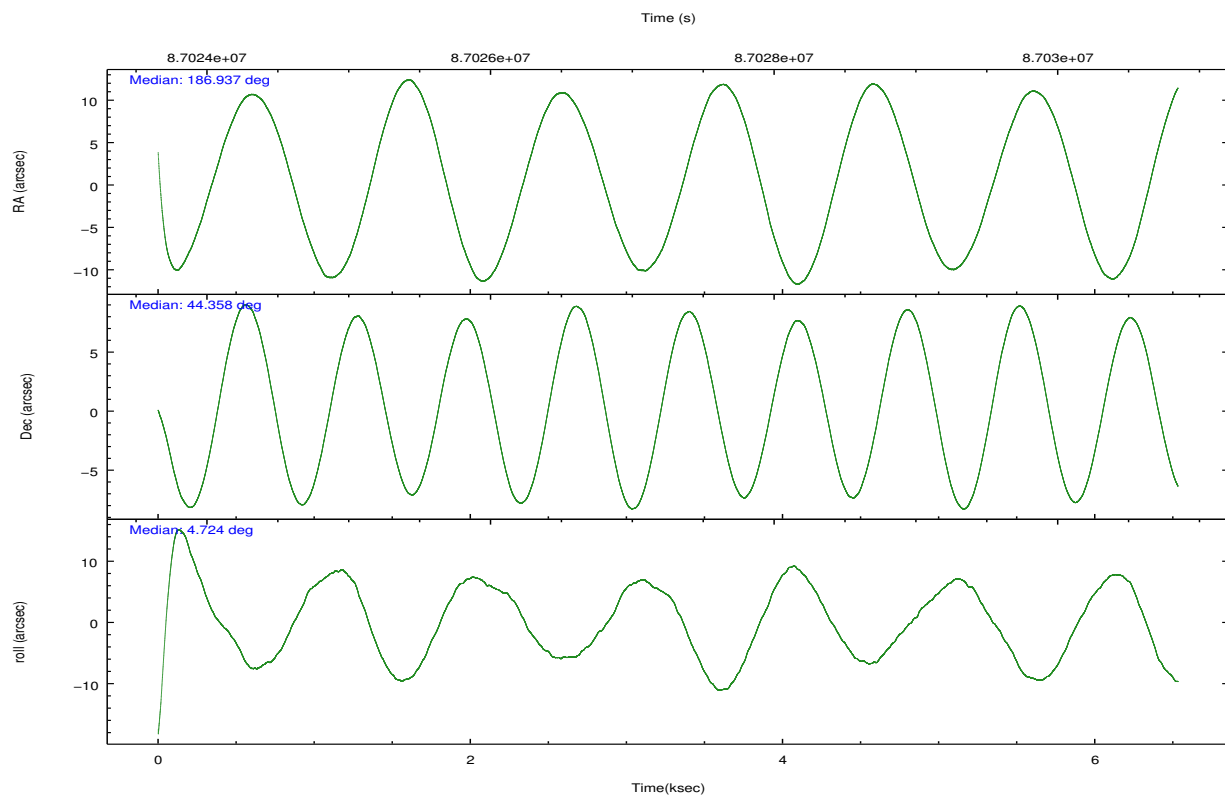
2.2 Compared Parameters

Parameter	Planned	Actual
Instrument	ACIS	ACIS
Detector	ACIS-012367	ACIS-012367
Grating	NONE	NONE
Data mode	VFAINT	VFAINT
Observation mode	POINTING	POINTING
[deg] Pointing RA	186.904780	186.9363859642861
[deg] Pointing Dec	44.342655	44.35825485093345
[deg] Pointing Roll	4.543891	4.730439928098069
[mm] SIM focus pos	-0.782348	-0.7809083437167272
[mm] SIM defocus	0	0.001439871863259334
[mm] SIM translation stage pos	-233.592463	-233.5874344608287
[mm] SIM translation stage offset	0	-0.005018542100998502
[s] Observation start time (MET)	87024179.184000	87023516.709556
Observation start date	2000-10-04T05:21:55	2000-10-04T05:11:56
[s] Observation end time (MET)	87030517.184000	87030831.109832
Observation end date	2000-10-04T07:07:33	2000-10-04T07:13:51
Read mode	TIMED	TIMED

Parameter	Planned	Actual
Obspar format version number	7	7
Obspar file type	PREDICTED	ACTUAL
Obspar update status	NONE	UPDATED
Number of optional ACIS chips dropped	0	0
On-chip summing requested	N	N
Subarray requested	NONE	NONE
Alternating exposures requested	N	N
[s] Primary exposure time	0.000000	3.2

2.3 Aspect



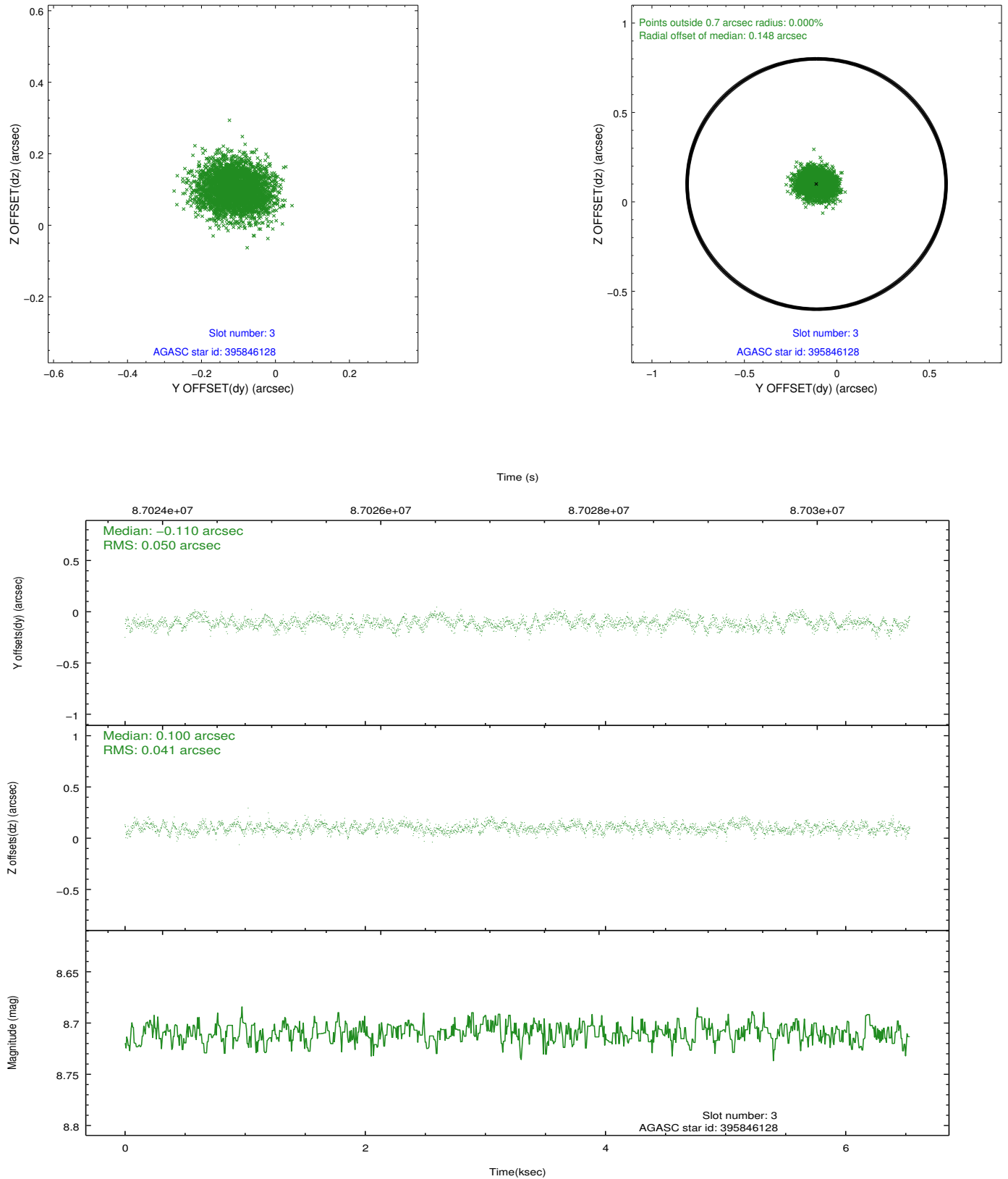


Slot Statistics

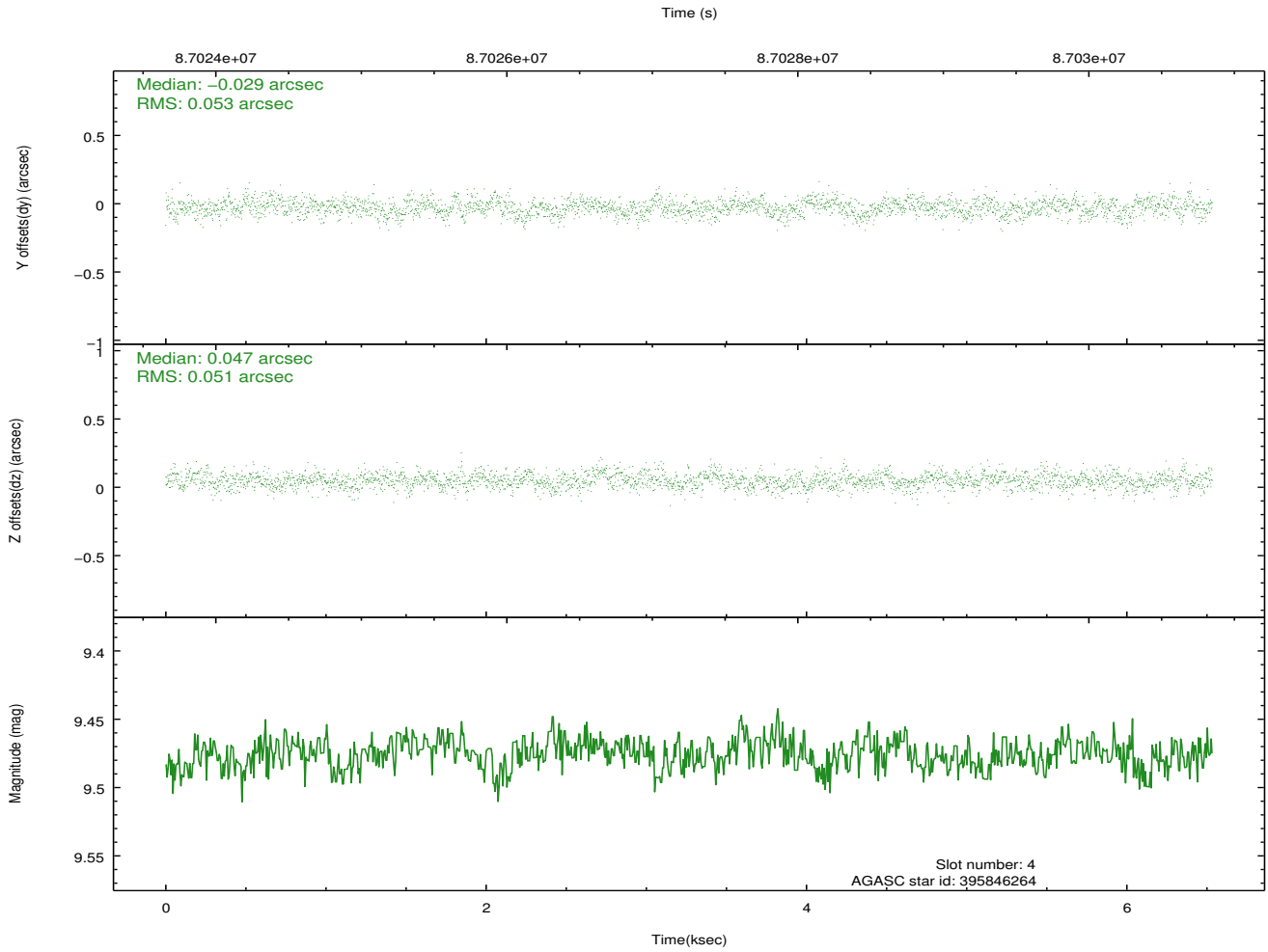
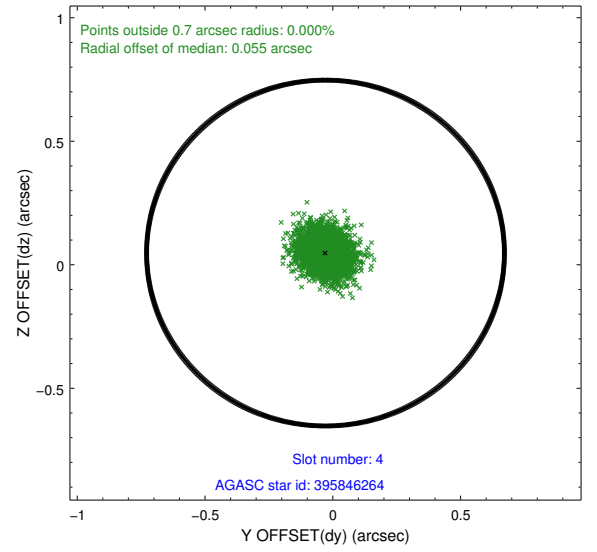
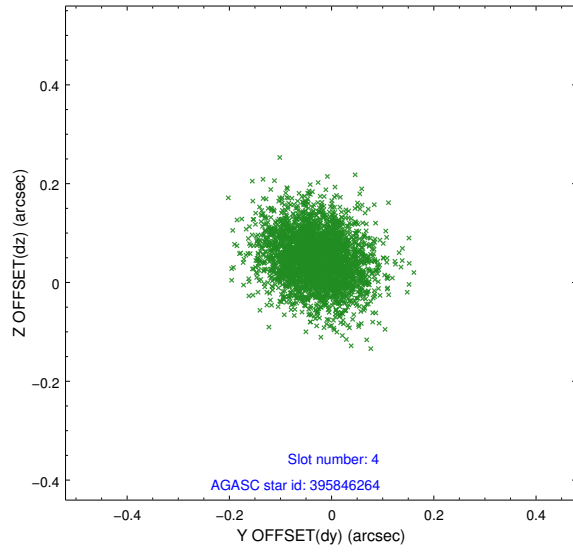
slot	status	id	mag	n_pts	med_dy	med_dz	dr1	dr2	ra	dec	mean_y	mean_z
0	FID	ACIS-I-2	7.16	1594	-0.043	-0.068	0.009	0.015	0.000000	0.000000	-755.94	-836.32
1	FID	ACIS-I-4	7.18	1594	-0.049	0.050	0.007	0.012	0.000000	0.000000	2157.70	1069.53
2	FID	ACIS-I-5	7.23	1594	-0.009	0.087	0.009	0.015	0.000000	0.000000	-1808.58	1068.43
3	GUIDE	395846128	8.71	3187	-0.110	0.100	0.069	0.110	187.720764	44.188706	2055.89	-708.88
4	GUIDE	395846264	9.48	3188	-0.029	0.047	0.078	0.130	187.191241	44.211279	699.45	-529.12
5	GUIDE	395855224	9.65	3187	0.110	-0.111	0.117	0.199	186.279112	44.799118	-1463.18	1770.14
6	GUIDE	395855392	9.86	3186	0.058	-0.003	0.103	0.163	186.593517	44.710998	-689.94	1386.66
7	GUIDE	395854648	9.97	3187	-0.037	-0.035	0.108	0.175	187.682941	44.741066	2096.82	1281.96

2.4 Star Slots

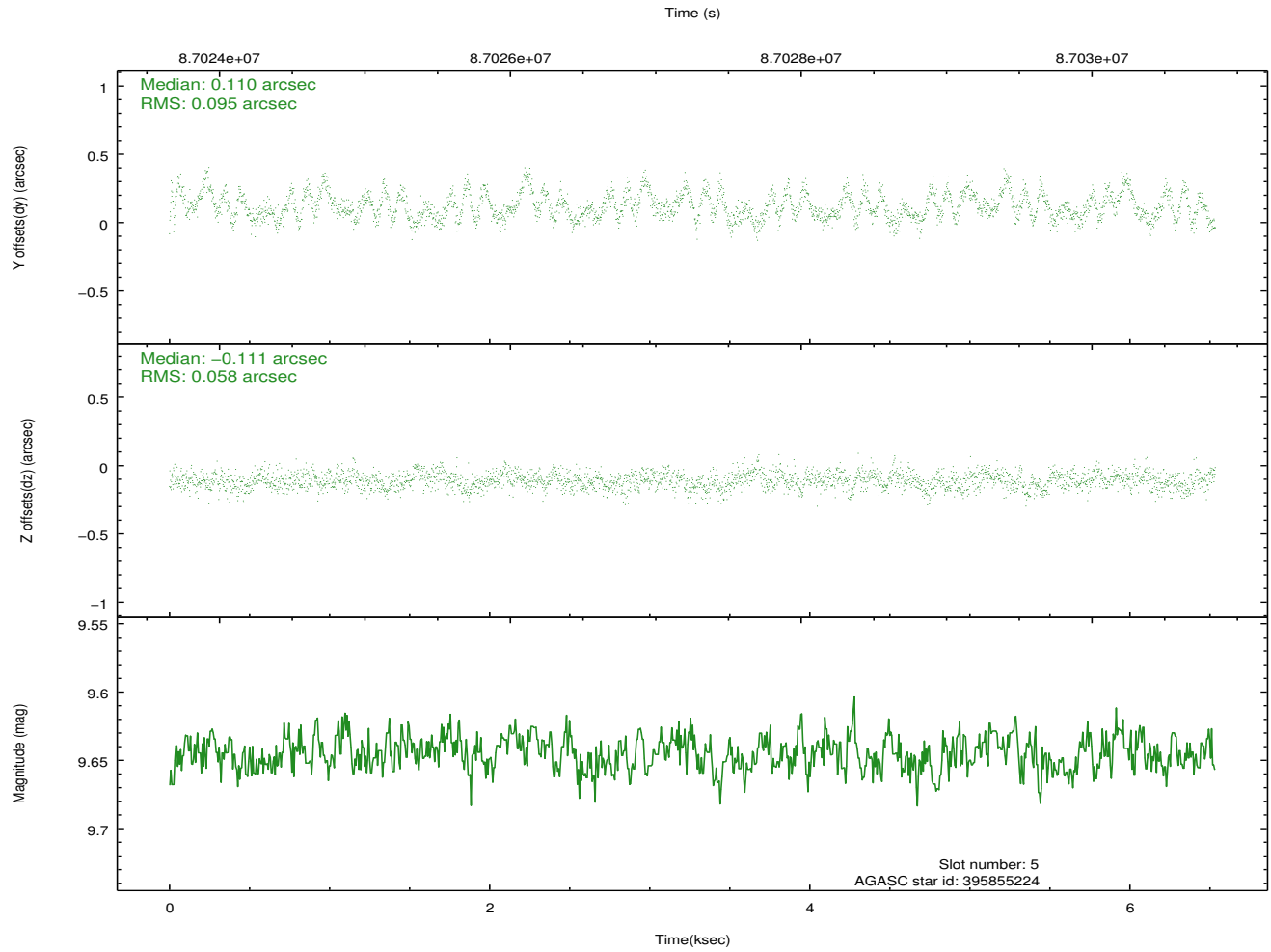
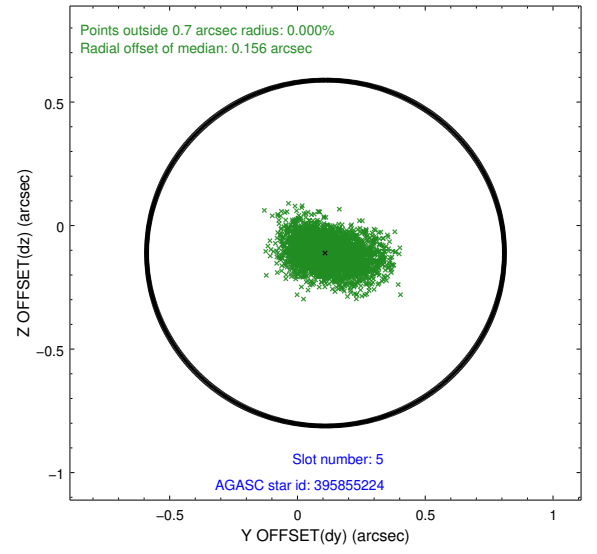
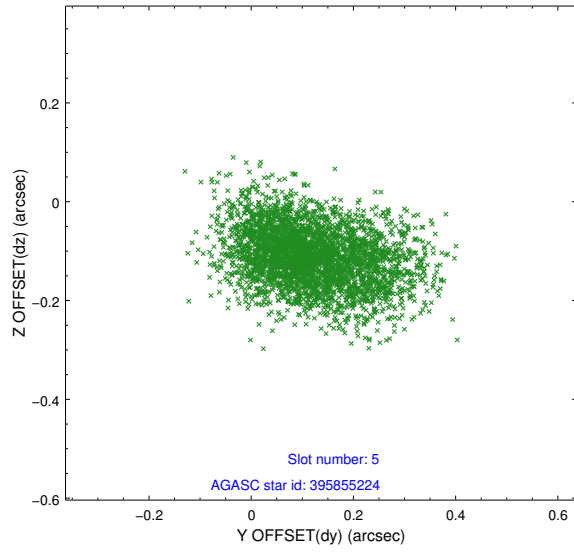
2.4.1 Slot 3



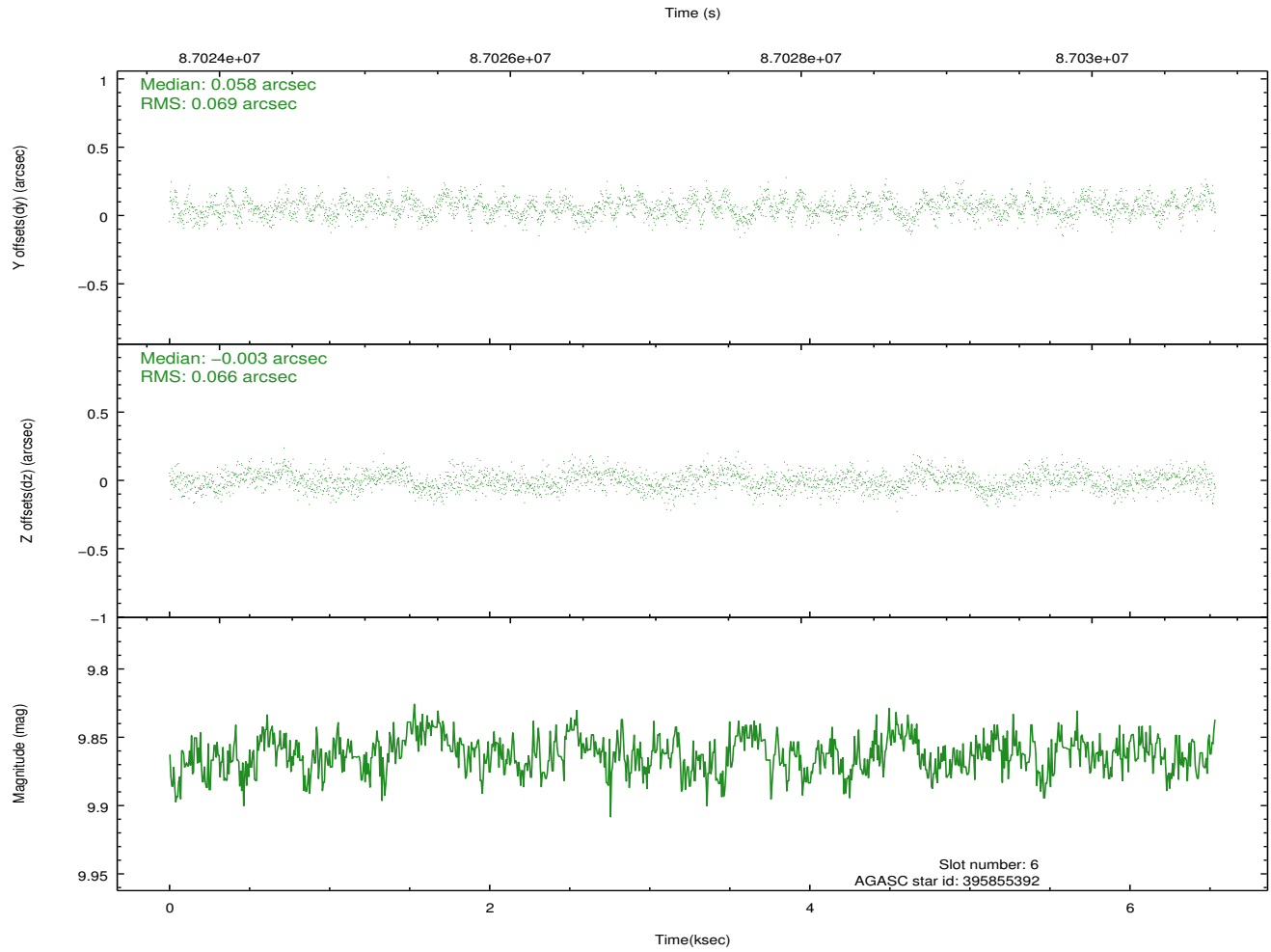
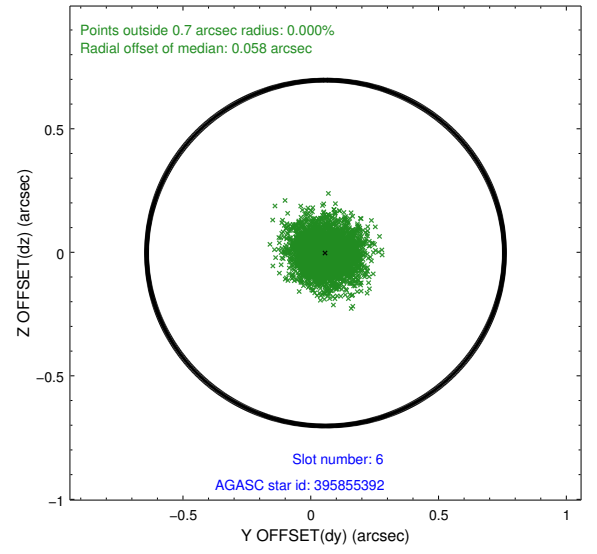
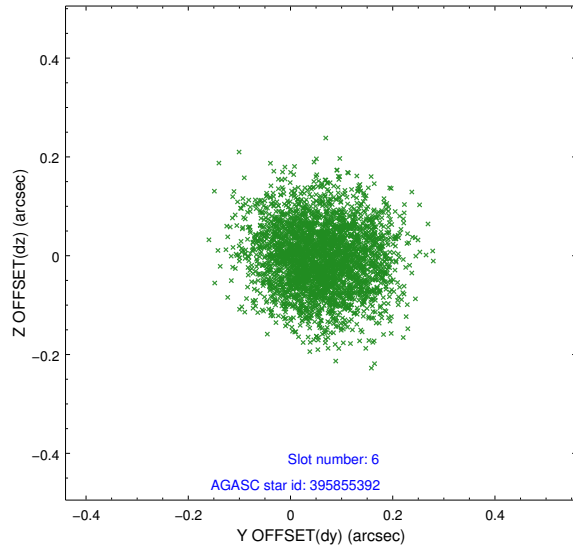
2.4.2 Slot 4



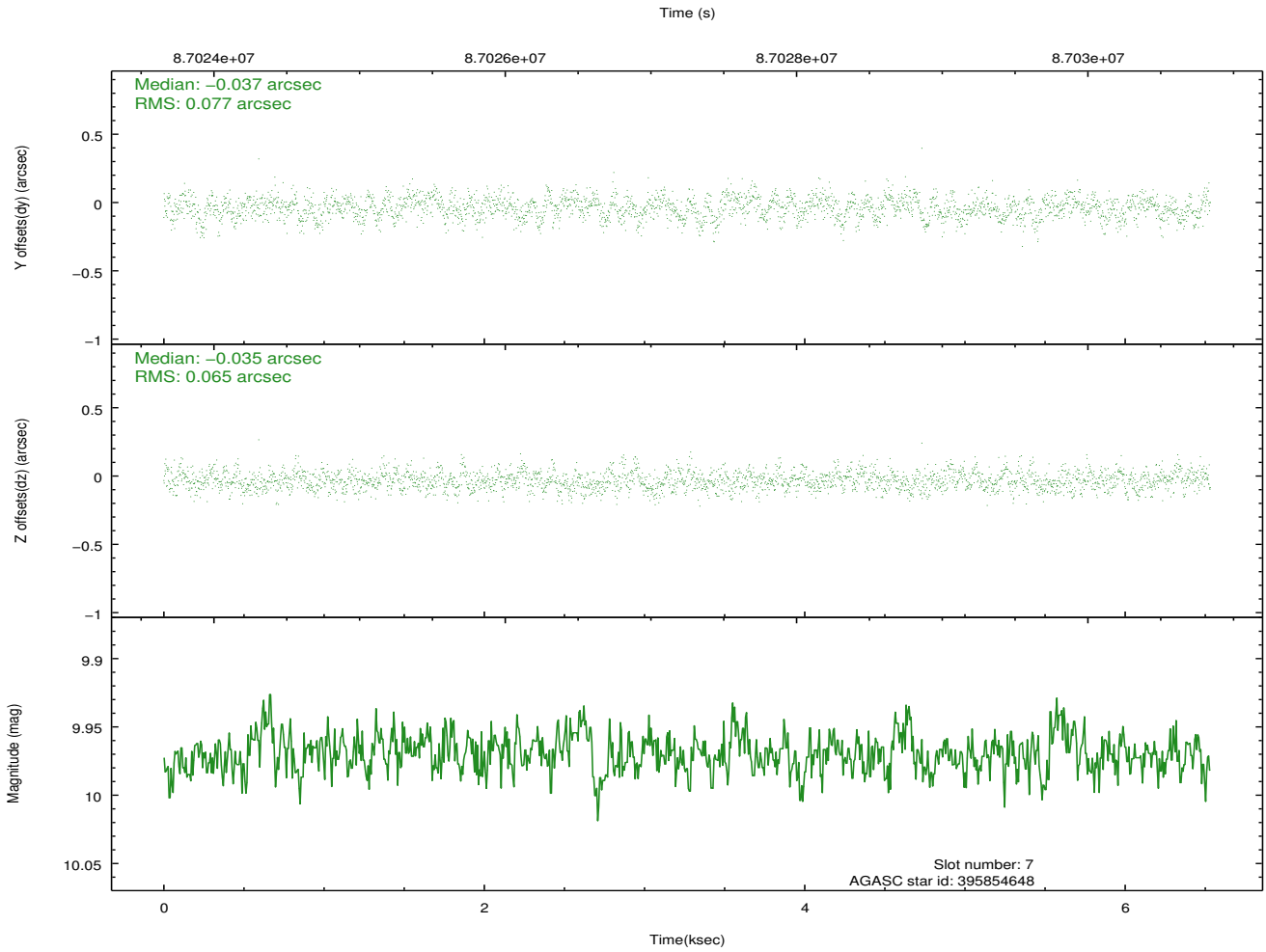
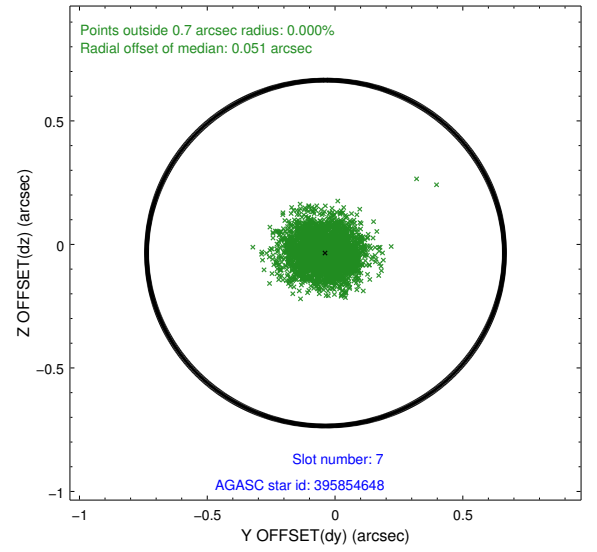
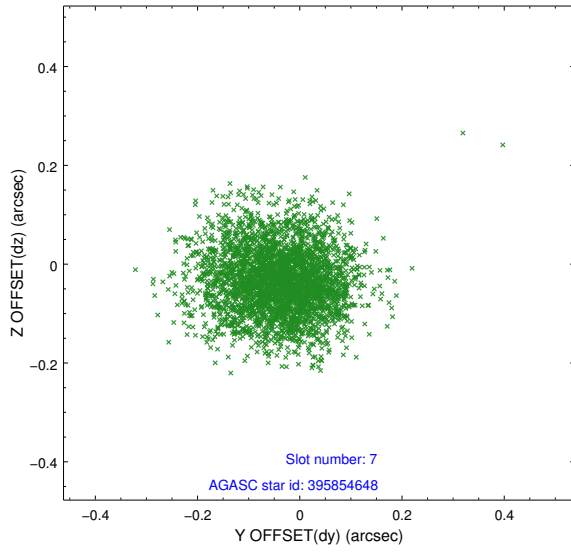
2.4.3 Slot 5



2.4.4 Slot 6

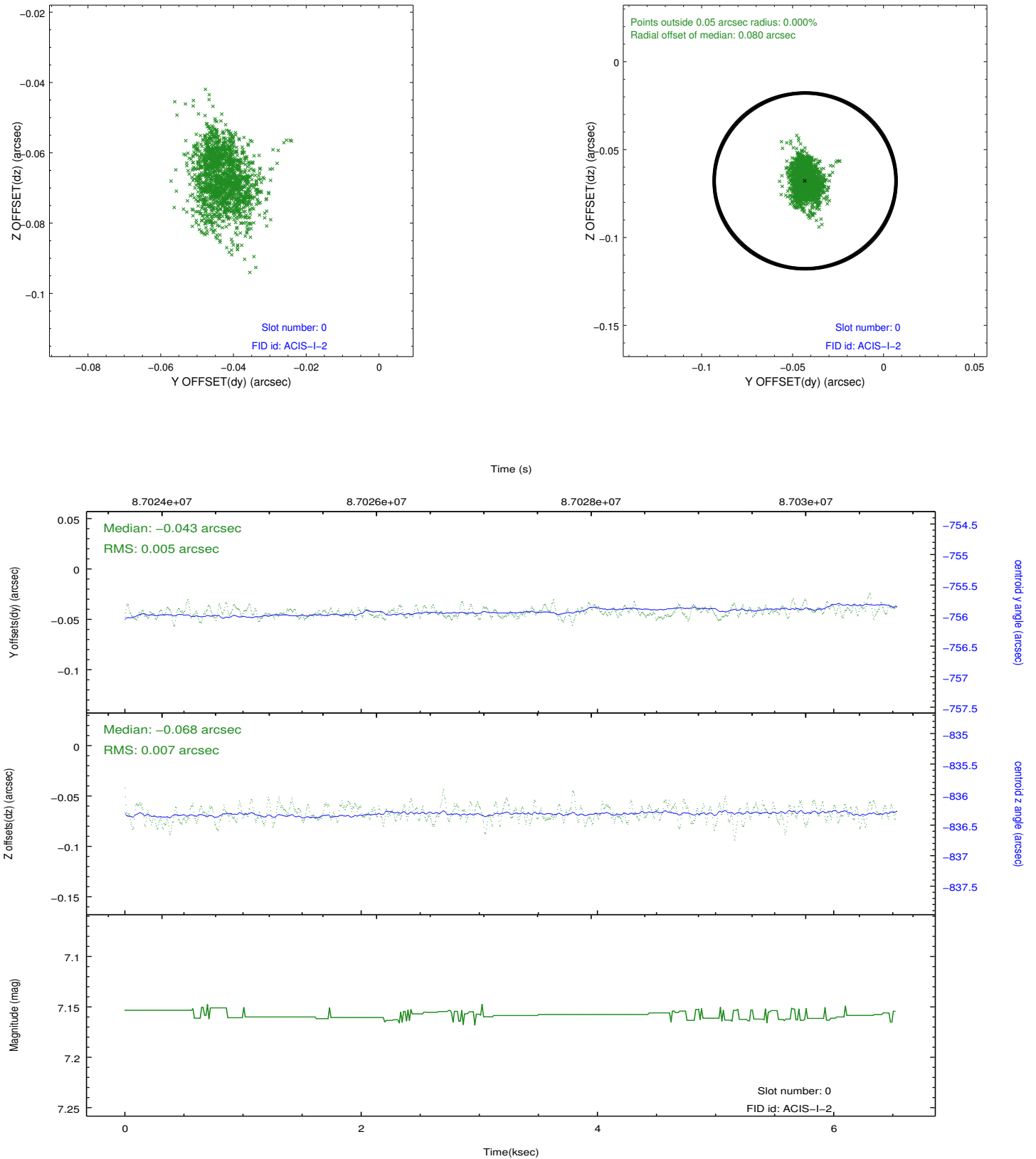


2.4.5 Slot 7

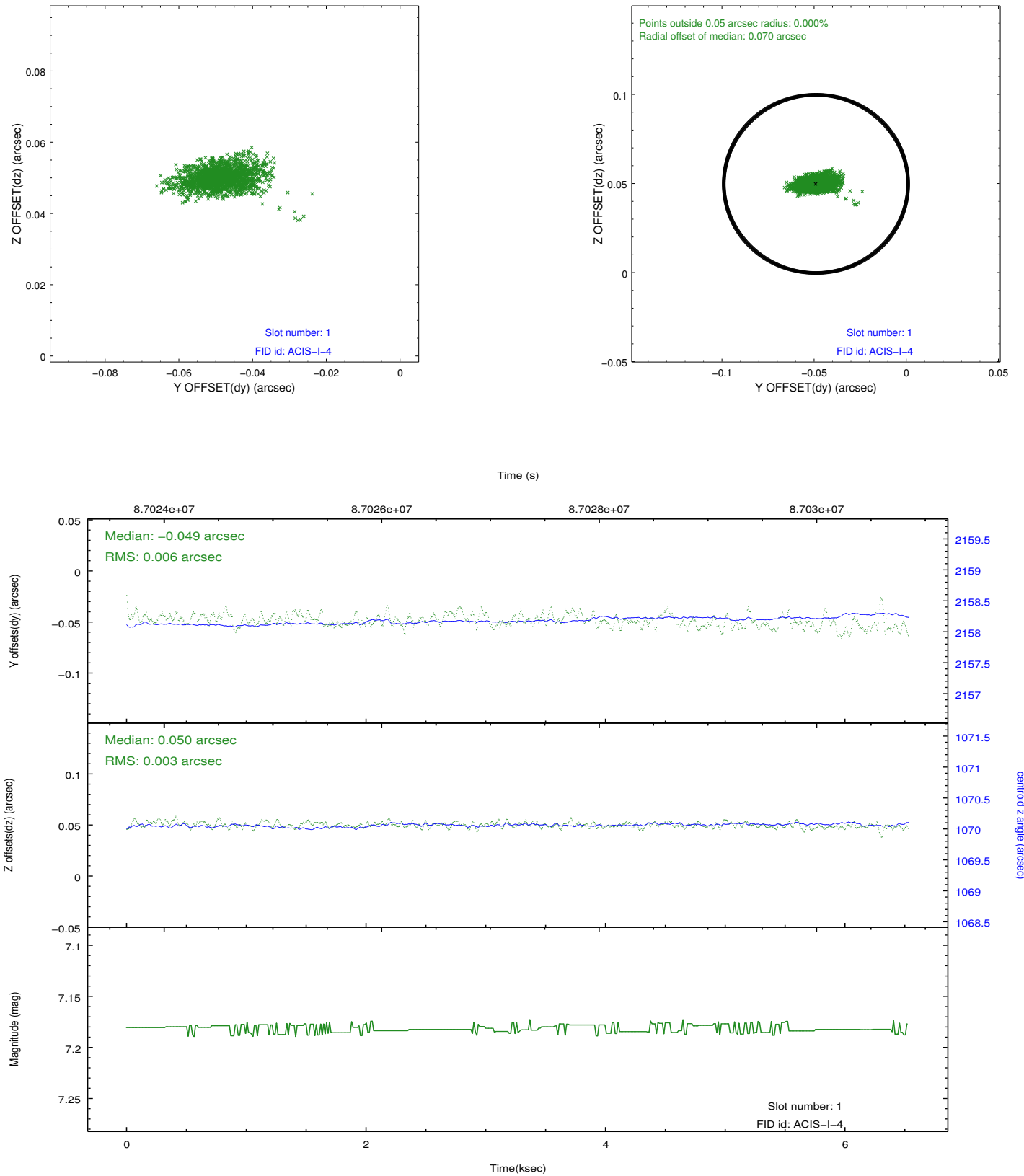


2.5 FID Slots

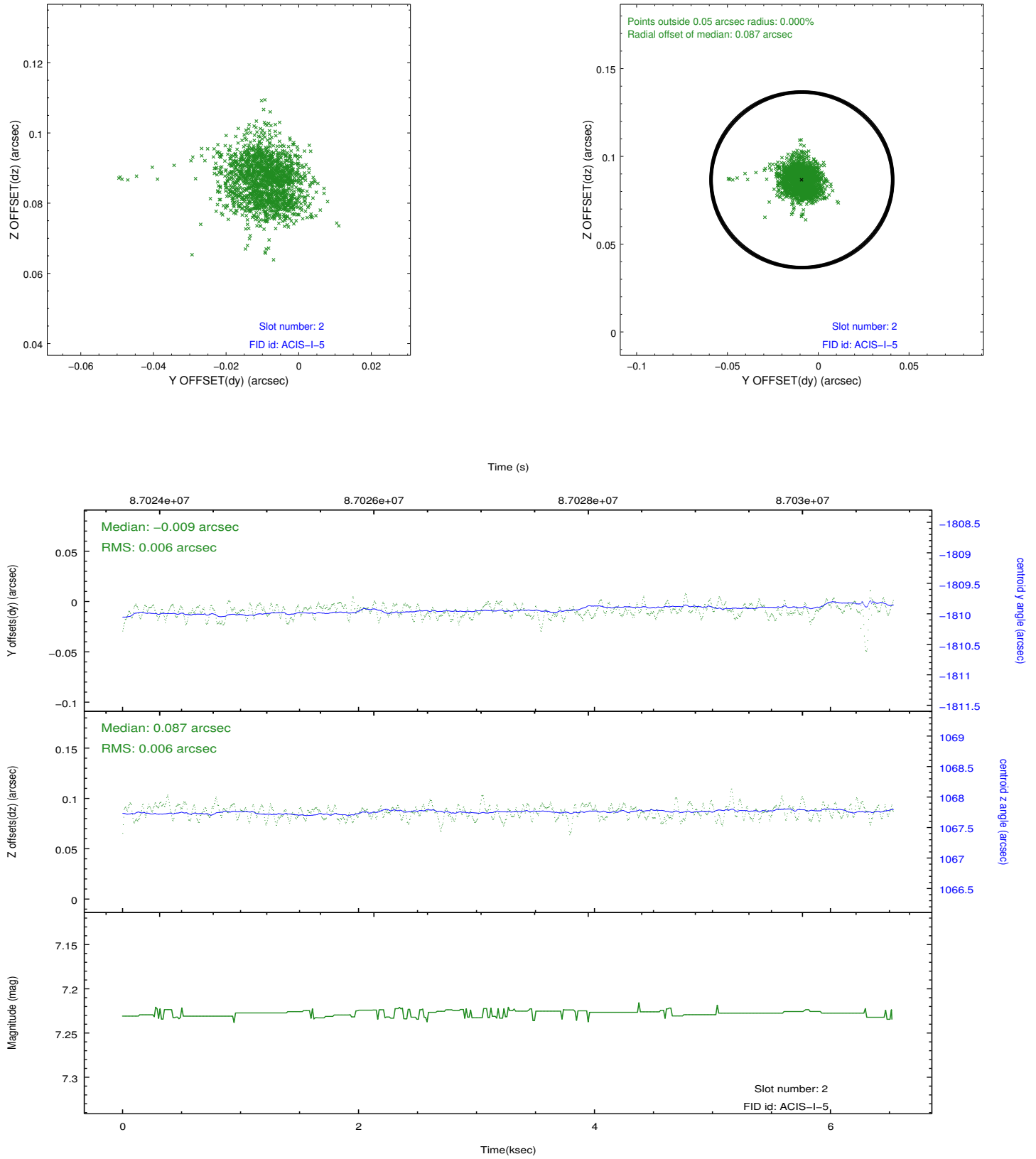
2.5.1 Slot 0



2.5.2 Slot 1



2.5.3 Slot 2



A Summary

A.1 Status

V&V Scientist	Beth Sundheim
V&V Date (YYYY-MM-DD)	2012.09.13
V&V Edition	1
V&V Disposition and Status	OK
V&V Charge Time	5.651

A.2 Comments

Charge time for this observation remains at previous value of 5.651 ksec.