

# V&V Reference Report

## L2 ASCDS Version : 8.4.4

Observation 8948 - L2 Version 2  
Chandra X-Ray Center

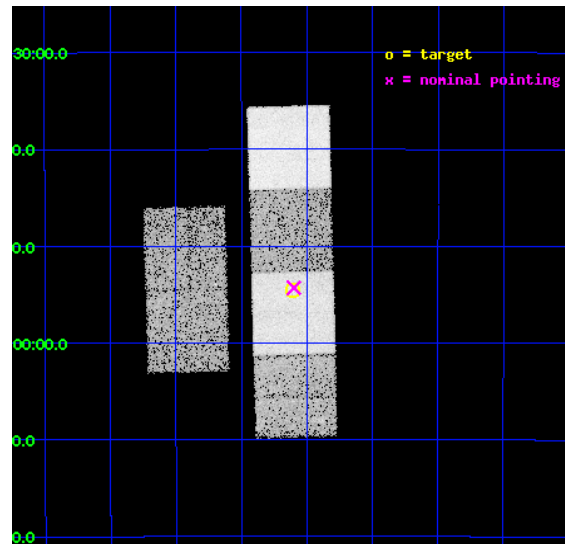
L2 Processing Date : Jun 1 2012

## Contents

<b>1</b>	<b>Front</b>	<b>2</b>
<b>2</b>	<b>OBI</b>	<b>3</b>
2.1	OBI . . . . .	3
2.1.1	Images . . . . .	3
2.1.2	Bias . . . . .	3
2.1.3	Parameters . . . . .	4
2.1.4	Events . . . . .	4
2.2	Compared Parameters . . . . .	5
2.3	Aspect . . . . .	6
2.4	Star Slots . . . . .	9
2.4.1	Slot 3 . . . . .	9
2.4.2	Slot 4 . . . . .	10
2.4.3	Slot 5 . . . . .	11
2.4.4	Slot 6 . . . . .	12
2.4.5	Slot 7 . . . . .	13
2.5	FID Slots . . . . .	14
2.5.1	Slot 0 . . . . .	14
2.5.2	Slot 1 . . . . .	15
2.5.3	Slot 2 . . . . .	16
<b>A</b>	<b>Summary</b>	<b>17</b>
A.1	Status . . . . .	17
A.2	Comments . . . . .	17

# 1 Front

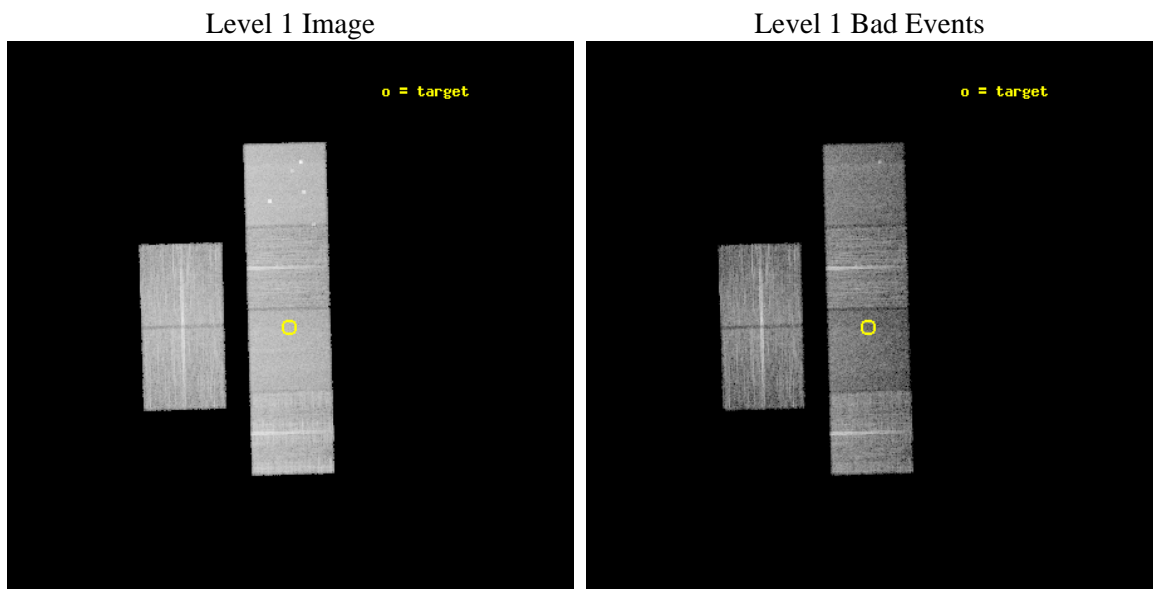
seq_num	300204	Sequence number
obs_id	8948	Observation id
title	A Chandra Legacy Survey of Dynamically Active Globular Clusters	Pr
observer	Prof. David Pooley	Principal investigator
object	NGC 6401	Source name
dtcycle	0	&#160
cycle	P	events from which exps? Prim/Second/Both
ra_targ	264.6525	Observer's specified target RA [deg]
dec_targ	-23.909444	Observer's specified target Dec [deg]
ra_nom	264.64986937523	Nominal RA [deg]
dec_nom	-23.905207090565	Nominal Dec [deg]
roll_nom	88.45084088715	Nominal Roll [deg]
revision	2	Processing version of data
ontime	11241.599958181	Sum of GTIs [s]
livetime	11099.252050632	Livetime [s]
ontime2	11241.599958181	Sum of GTIs [s]
ontime3	11241.599958181	Sum of GTIs [s]
ontime5	11241.599958181	Sum of GTIs [s]
ontime6	11241.599958181	Sum of GTIs [s]
ontime7	11241.599958181	Sum of GTIs [s]
ontime8	11241.599958181	Sum of GTIs [s]
l2events	147725	Number of level 2 events



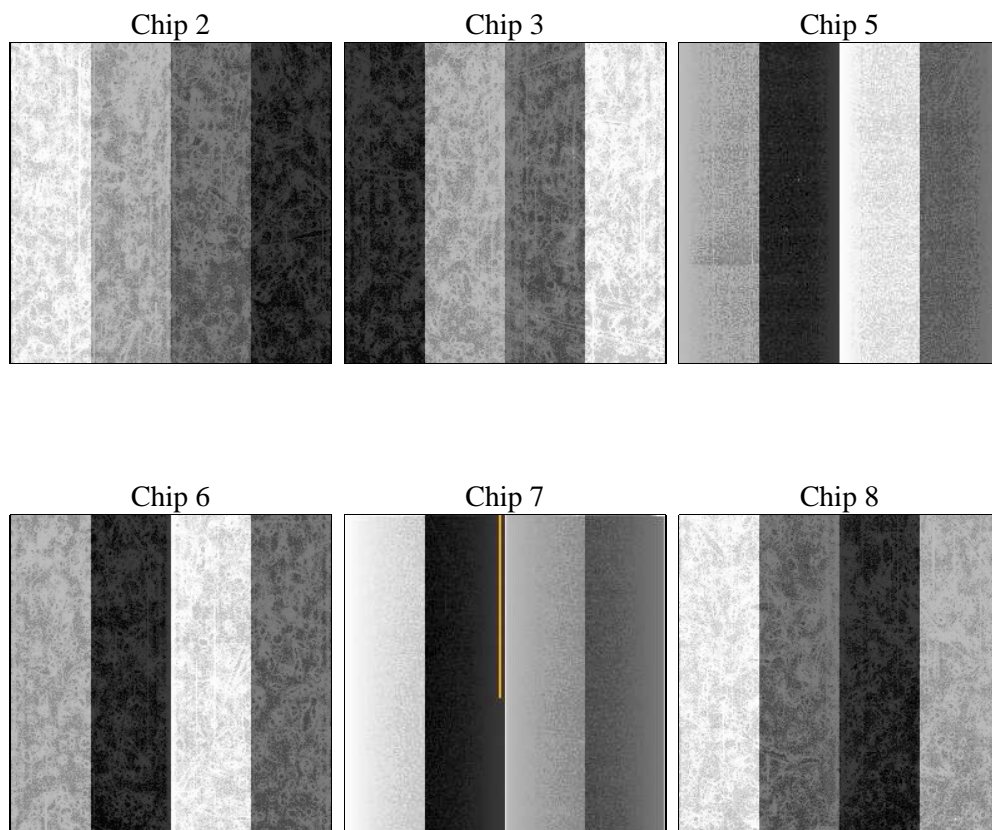
## 2 OBI

### 2.1 OBI

#### 2.1.1 Images



#### 2.1.2 Bias



### 2.1.3 Parameters

obi_num	0	Obi number	sched_exp_time	11200.000000	[s] Scheduled observation exposure time
ascdsver	8.4.4	Processing system revision	ontime	11241.599958181	Sum of GTIs [s]
caldsver	4.4.9	&#160	ontime2	11241.599958181	Sum of GTIs [s]
date	2012-06-01T06:56:52	Date and time of file creation	ontime3	11241.599958181	Sum of GTIs [s]
revision	2	Processing version of data	ontime5	11241.599958181	Sum of GTIs [s]
			ontime6	11241.599958181	Sum of GTIs [s]
			ontime7	11241.599958181	Sum of GTIs [s]
			ontime8	11241.599958181	Sum of GTIs [s]
			l1events	654064	Number of level 1 events

### 2.1.4 Events

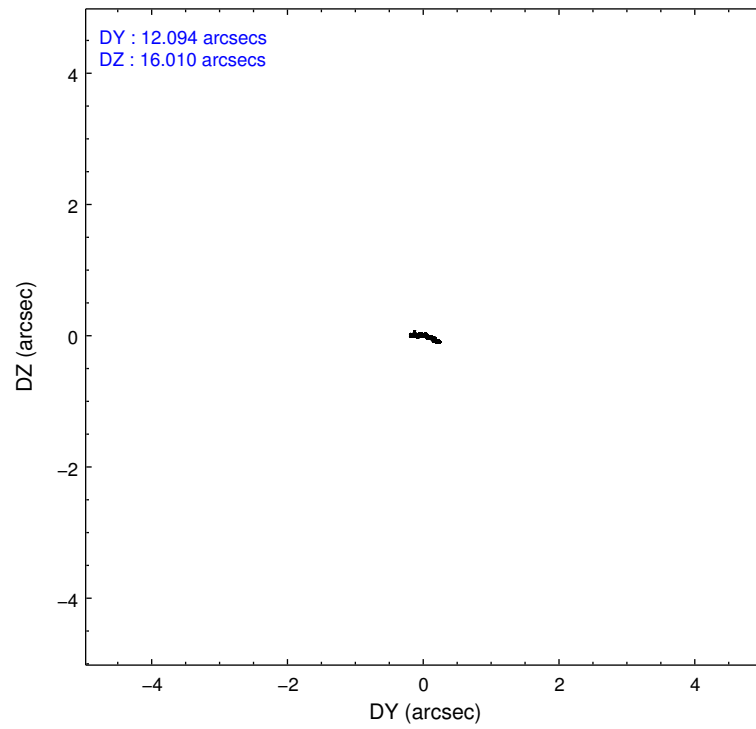
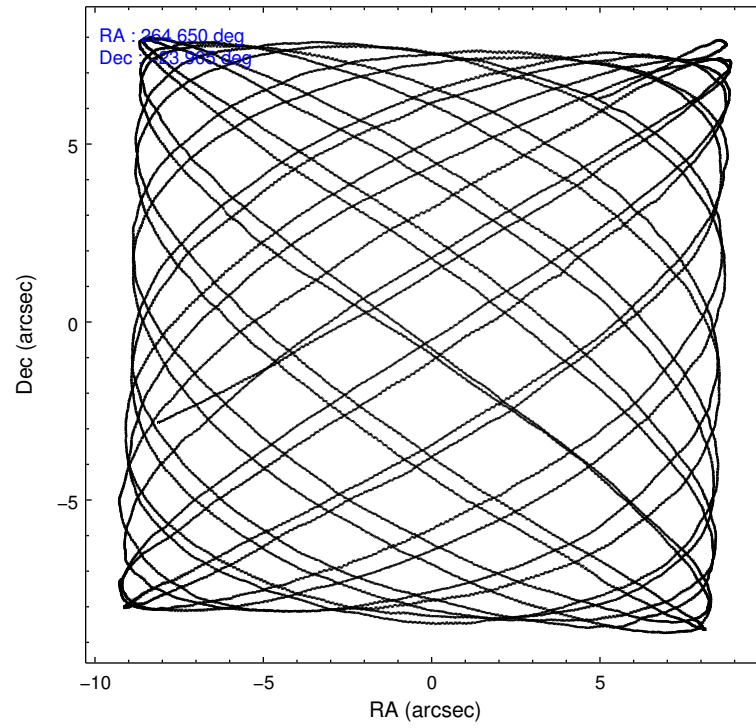
	ccd 2	ccd 3	ccd 5	ccd 6	ccd 7	ccd 8		ccd 2	ccd 3	ccd 5	ccd 6	ccd 7	ccd 8
level 1 events	101712	93708	133533	94827	106794	123490	grade 0 events	3928	3620	7550	4027	4874	9592
rejected events	91655	84311	66172	84104	56762	92392		3%	3%	5%	4%	4%	7%
rejected %	90%	89%	49%	88%	53%	74%	grade 1 events	58	64	338	54	156	116
								0%	0%	0%	0%	0%	0%
							grade 2 events	2349	2052	19699	2322	10462	7029
								2%	2%	14%	2%	9%	5%
							grade 3 events	960	1013	2848	1121	4496	3253
								0%	1%	2%	1%	4%	2%
							grade 4 events	1037	995	2621	1138	4537	2979
								1%	1%	1%	1%	4%	2%
							grade 5 events	3288	3828	10483	3811	11316	5540
								3%	4%	7%	4%	10%	4%
							grade 6 events	1785	1721	34663	2120	25675	8249
								1%	1%	25%	2%	24%	6%
							grade 7 events	88307	80415	55331	80234	45278	86732
								86%	85%	41%	84%	42%	70%

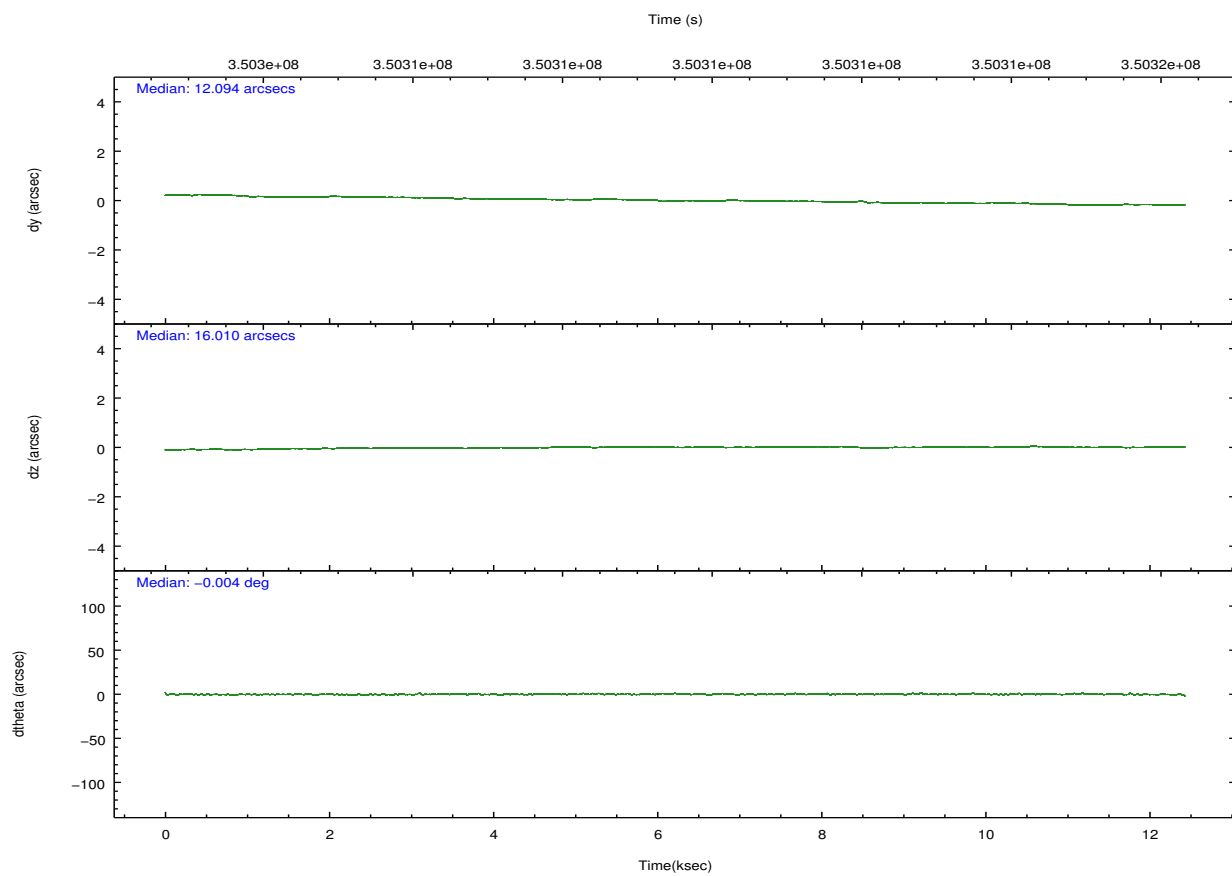
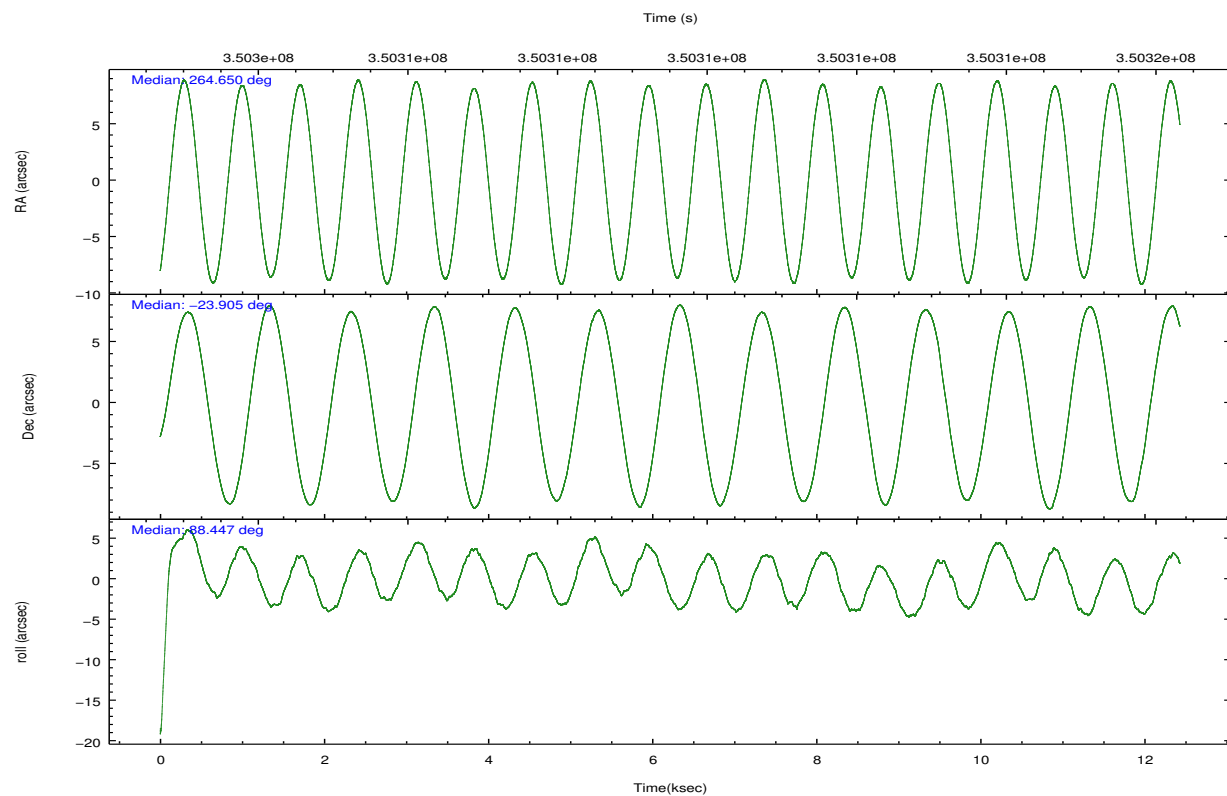


## 2.2 Compared Parameters

Parameter	Planned	Actual	Parameter	Planned	Actual
Instrument	ACIS	ACIS	Obspar format version number	7	7
Detector	ACIS-235678	ACIS-235678	Obspar file type	PREDICTED	ACTUAL
Grating	NONE	NONE	Obspar update status	NONE	UPDATED
Data mode	VFAINT	VFAINT	CCD I0 on	N	N
Observation mode	POINTING	POINTING	CCD I1 on	N	N
[deg] Pointing RA	264.664440	264.6498693752315	CCD I2 on	O1	Y
[deg] Pointing Dec	-23.929109	-23.90520709056539	CCD I3 on	O2	Y
[deg] Pointing Roll	88.300128	88.45084088715035	CCD S0 on	N	N
[mm] SIM focus pos	-0.684267	-0.6828225247311905	CCD S1 on	Y	Y
[mm] SIM defocus	0	0.001444936568705701	CCD S2 on	Y	Y
[mm] SIM translation stage pos	-190.132523	-190.1425803651734	CCD S3 on	Y	Y
[mm] SIM translation stage offset	0	0.01005778216563158	CCD S4 on	Y	Y
[s] Observation start time (MET)	350304523.184000	350302989.96601	CCD S5 on	N	N
Observation start date	2009-02-06T10:47:37	2009-02-06T10:23:09	Number of optional ACIS chips dropped	0	0
[s] Observation end time (MET)	350315723.184000	350316331.87917	On-chip summing requested	N	N
Observation end date	2009-02-06T13:54:17	2009-02-06T14:05:31	Subarray requested	NONE	NONE
Read mode	TIMED	TIMED	Alternating exposures requested	N	N
			[s] Primary exposure time	0.000000	3.2

## 2.3 Aspect



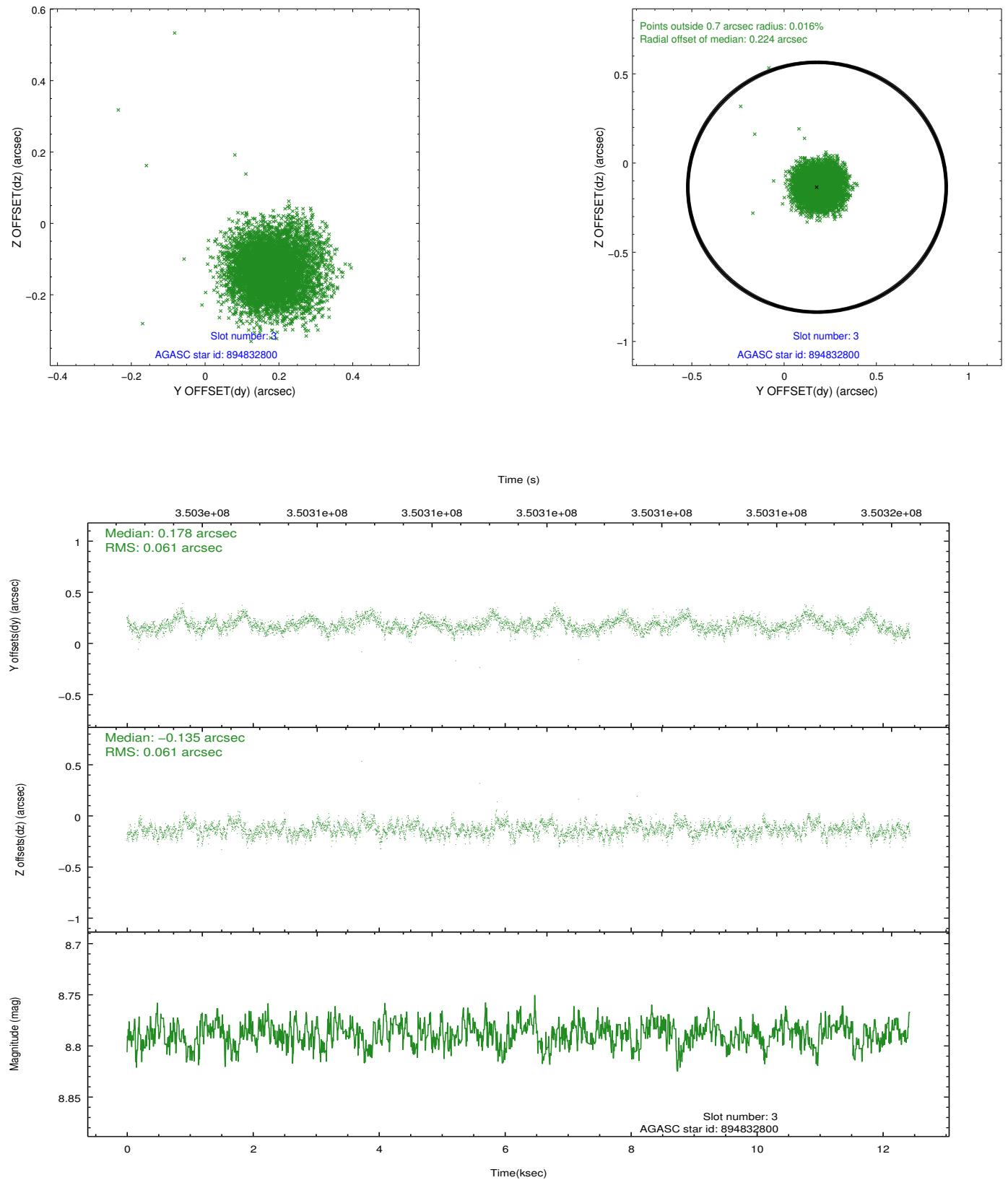


### Slot Statistics

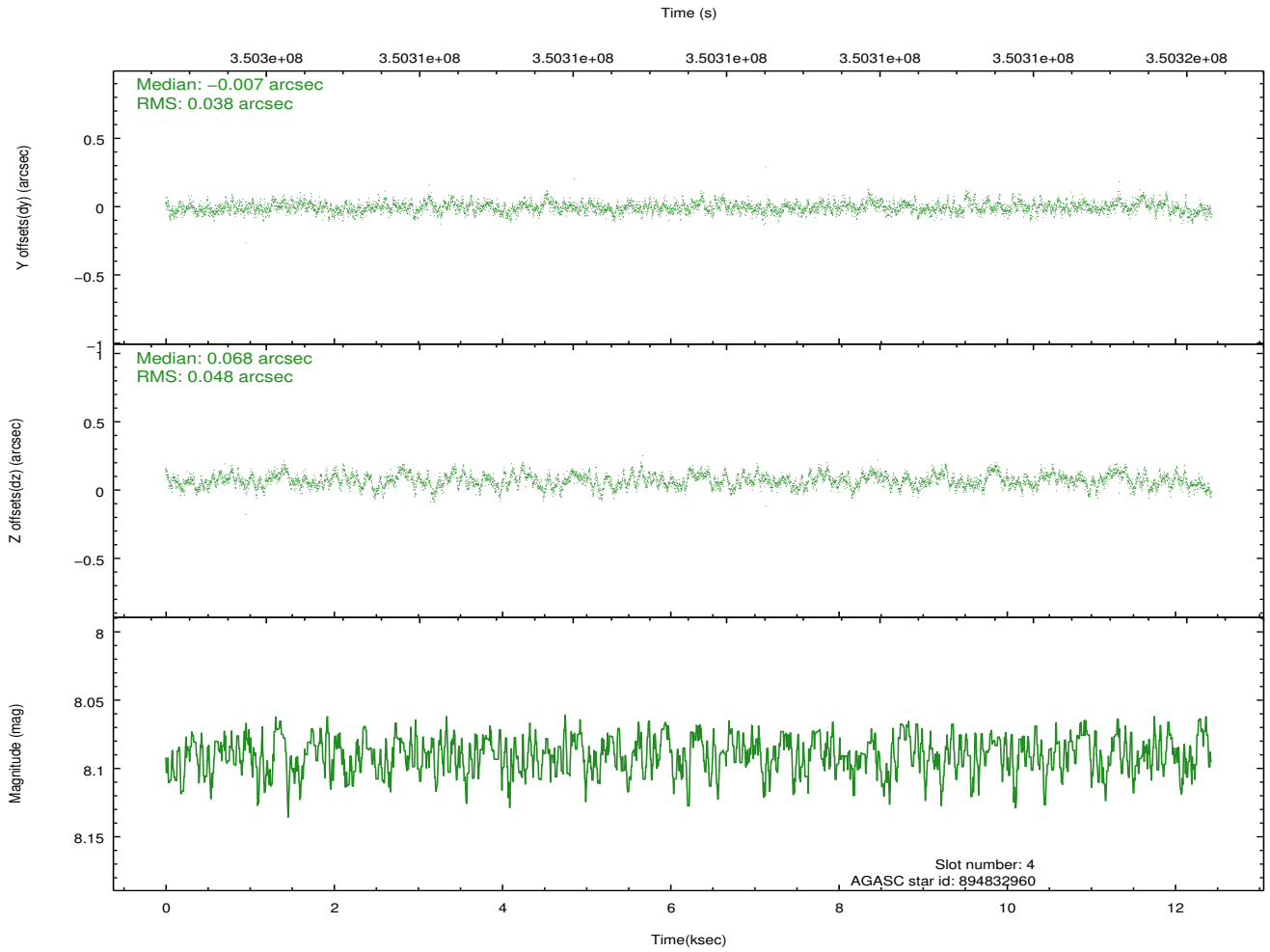
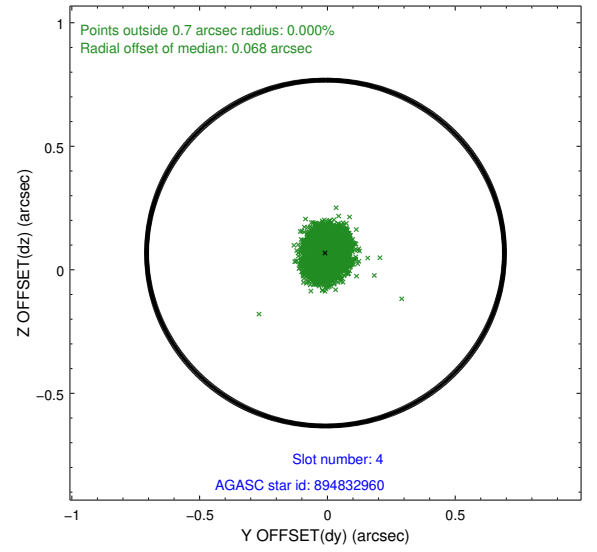
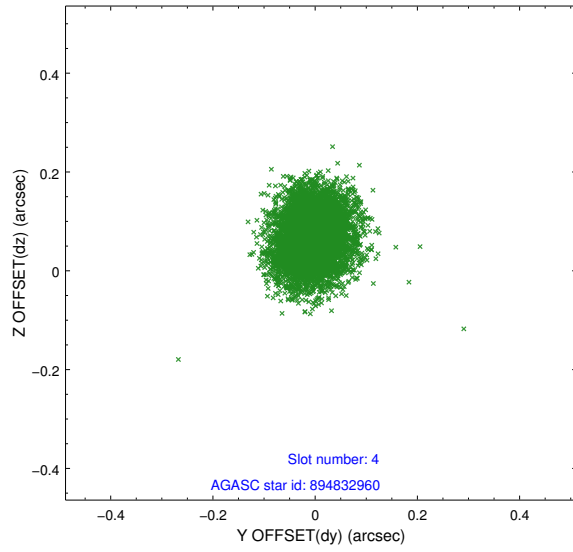
slot	status	id	mag	n_pts	med_dy	med_dz	dr1	dr2	ra	dec	mean_y	mean_z
0	FID	ACIS-S-2	6.88	3032	-0.064	-0.040	0.008	0.015	0.000000	0.000000	-765.05	-1737.40
1	FID	ACIS-S-4	6.97	3032	0.097	0.019	0.007	0.012	0.000000	0.000000	2148.20	170.74
2	FID	ACIS-S-6	7.10	3032	-0.061	0.029	0.007	0.012	0.000000	0.000000	397.43	808.59
3	GUIDE	894832800	8.79	6062	0.178	-0.135	0.091	0.151	264.850371	-23.988083	-194.34	-617.05
4	GUIDE	894832960	8.09	6062	-0.007	0.068	0.066	0.107	265.207905	-23.836130	384.54	-1778.63
5	GUIDE	894833864	8.88	6060	-0.131	0.150	0.073	0.119	265.284431	-23.474307	1693.18	-1997.64
6	GUIDE	894834264	9.03	6058	-0.114	-0.056	0.081	0.131	264.804000	-23.480108	1629.55	-412.60
7	GUIDE	895353224	9.64	5993	0.071	-0.030	0.114	0.187	264.332855	-24.564998	-2321.23	1017.32

## 2.4 Star Slots

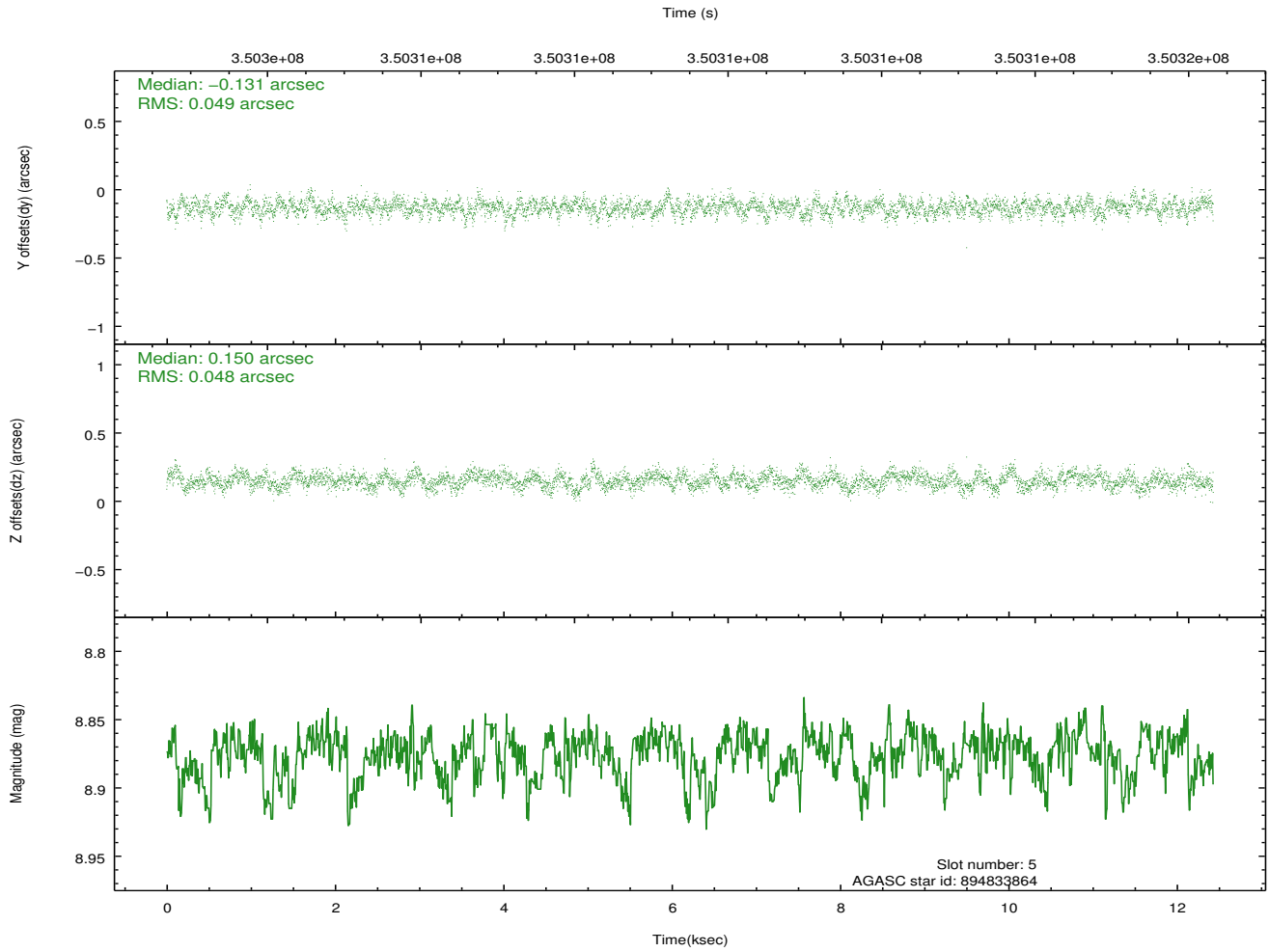
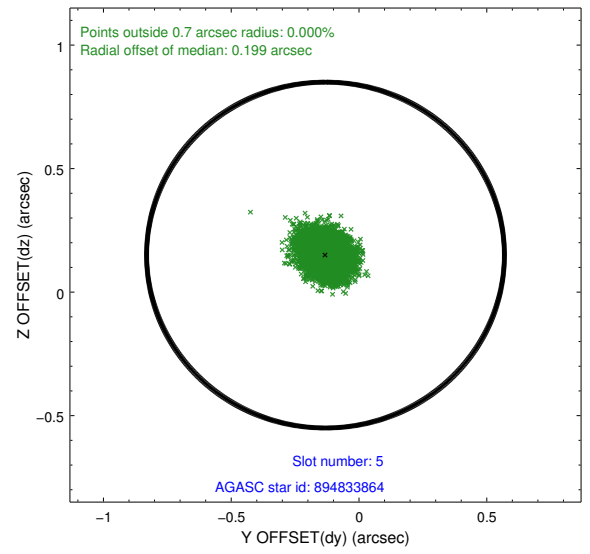
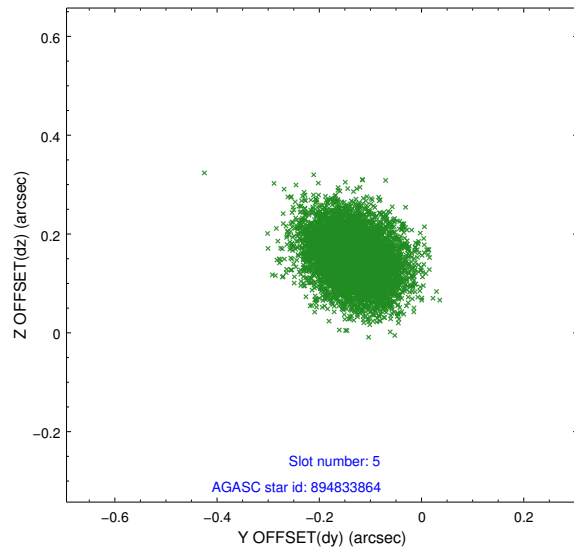
### 2.4.1 Slot 3



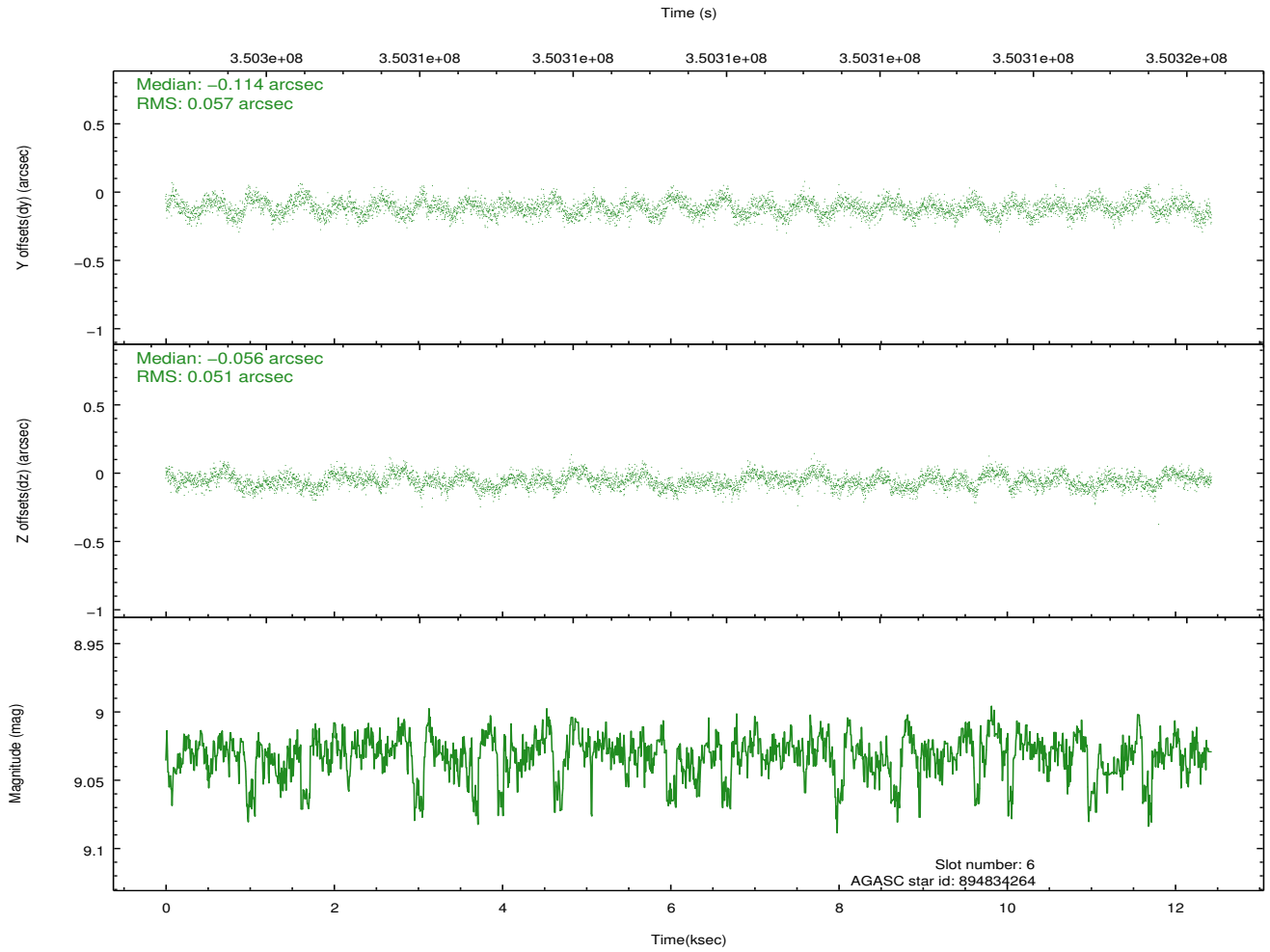
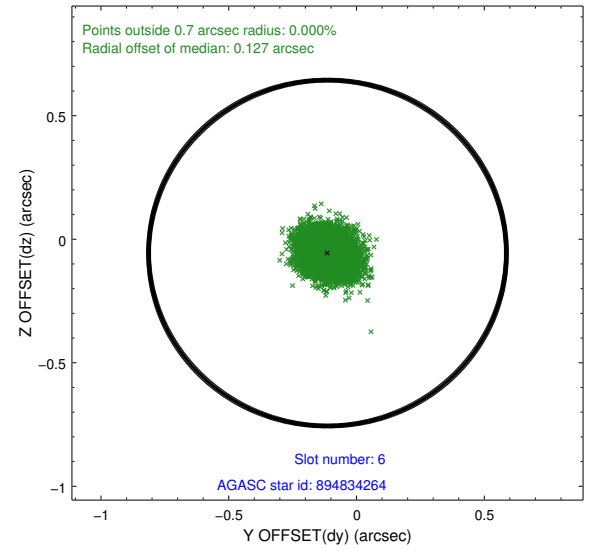
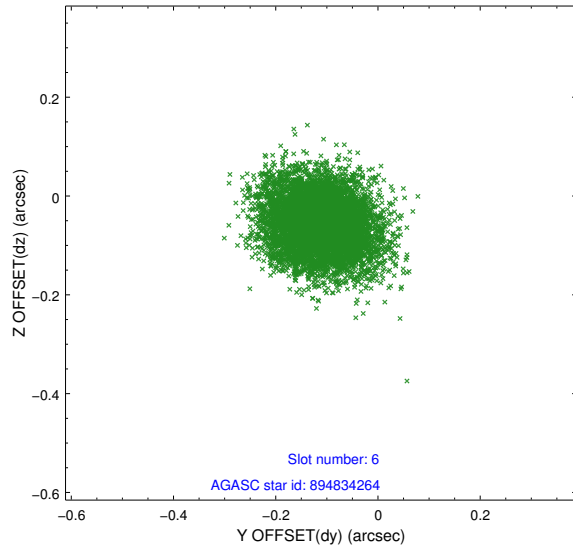
## 2.4.2 Slot 4



### 2.4.3 Slot 5

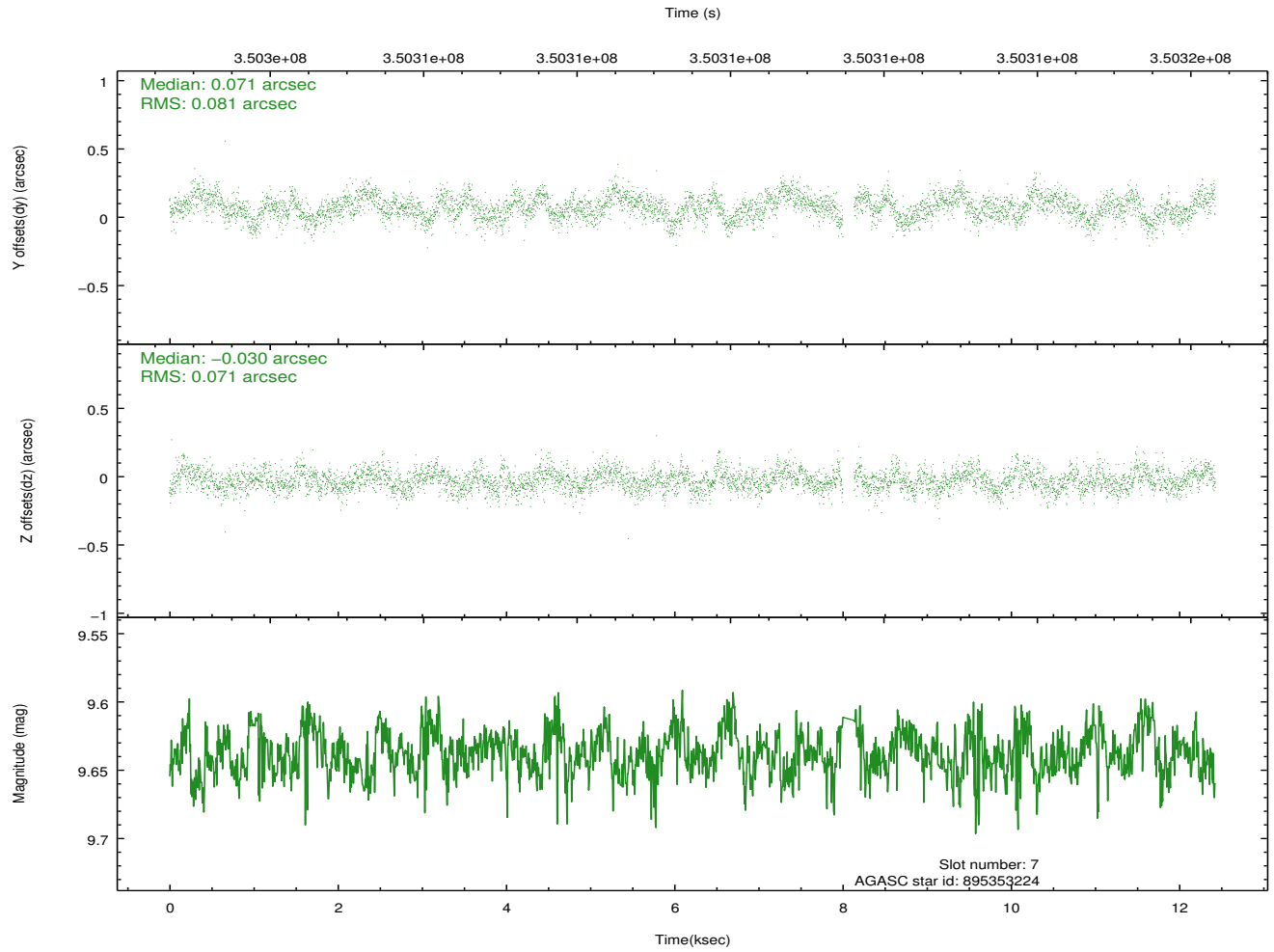
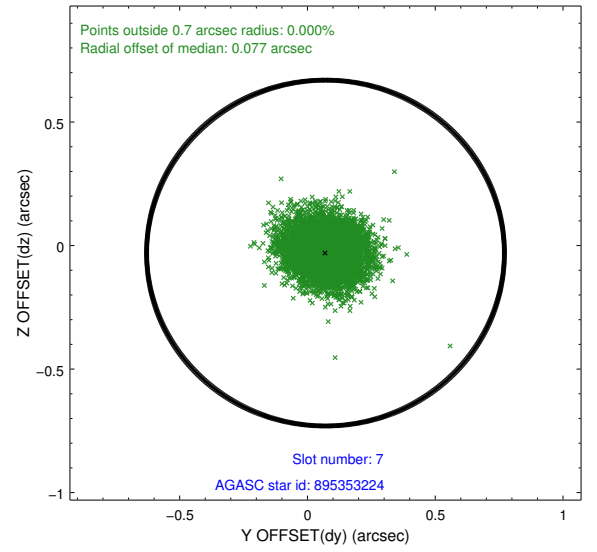
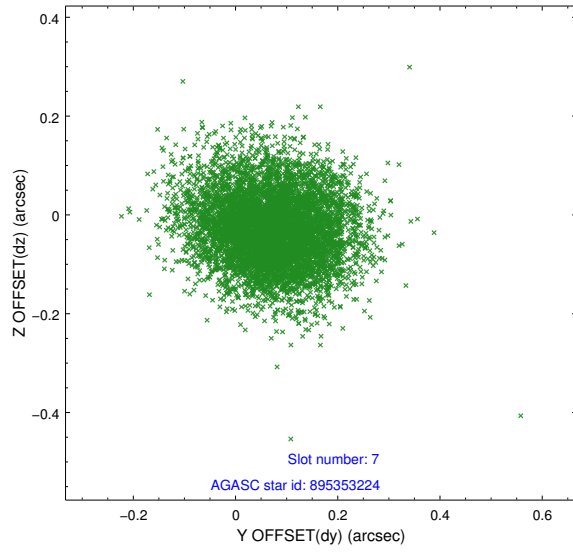


## 2.4.4 Slot 6



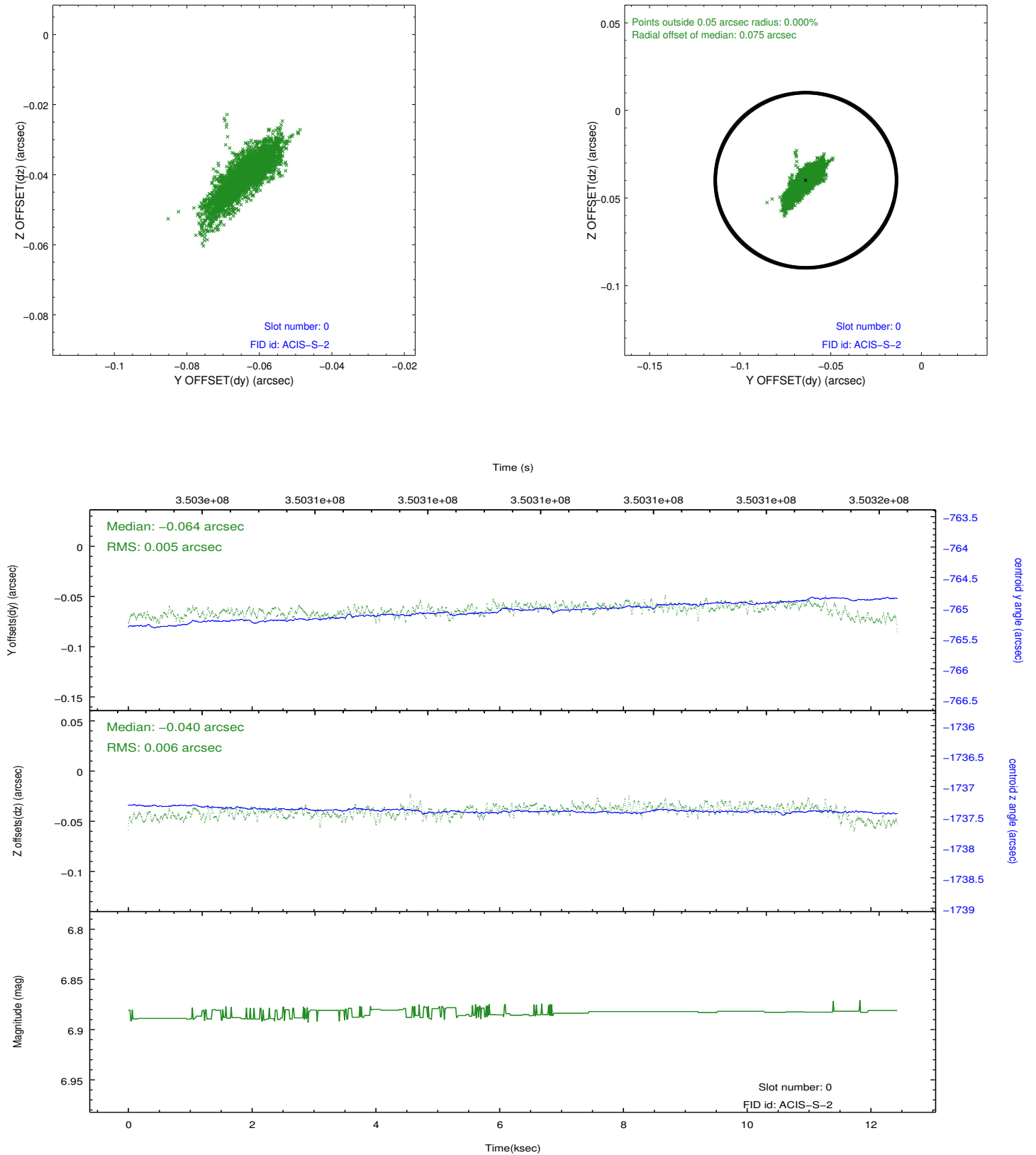


## 2.4.5 Slot 7

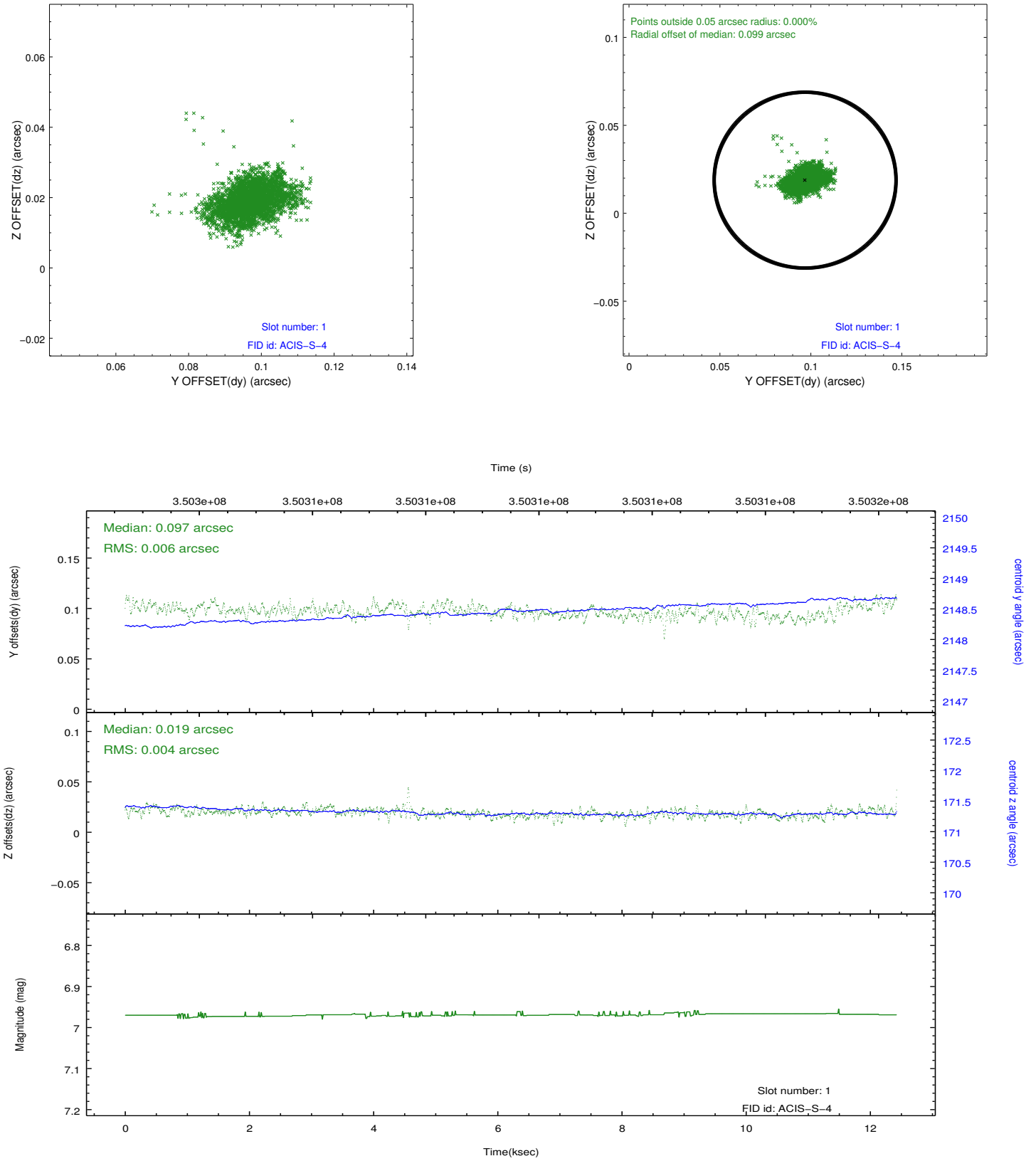


## 2.5 FID Slots

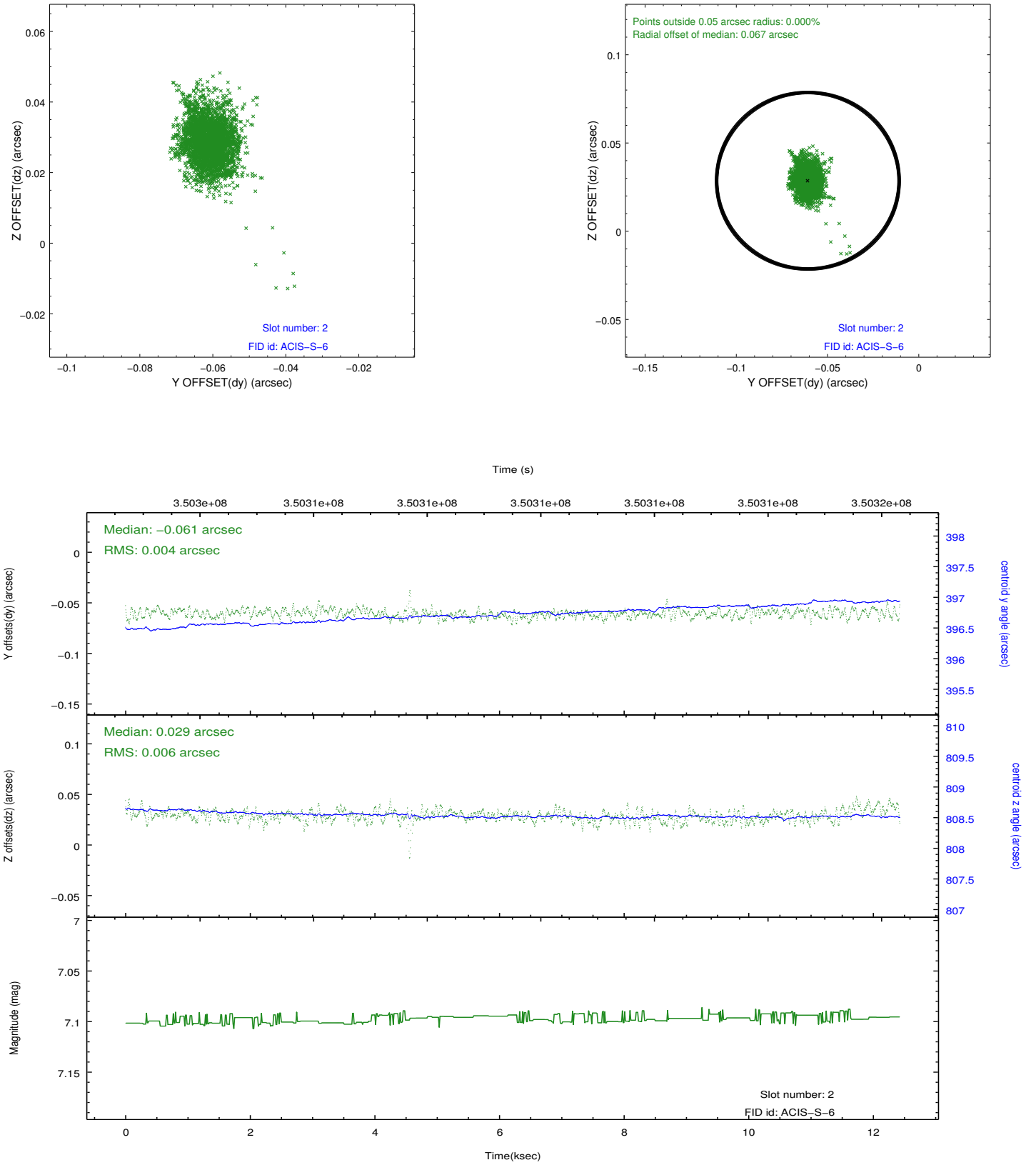
### 2.5.1 Slot 0



## 2.5.2 Slot 1



### 2.5.3 Slot 2



## A Summary

### A.1 Status

V&V Scientist	Beth Sundheim
V&V Date (YYYY-MM-DD)	2012.06.06
V&V Edition	1
V&V Disposition and Status	OK
V&V Charge Time	11.2415999

### A.2 Comments