

# V&V Reference Report

## L2 ASCDS Version : 7.6.10

Observation 868 - L2 Version 001  
Chandra X-Ray Center

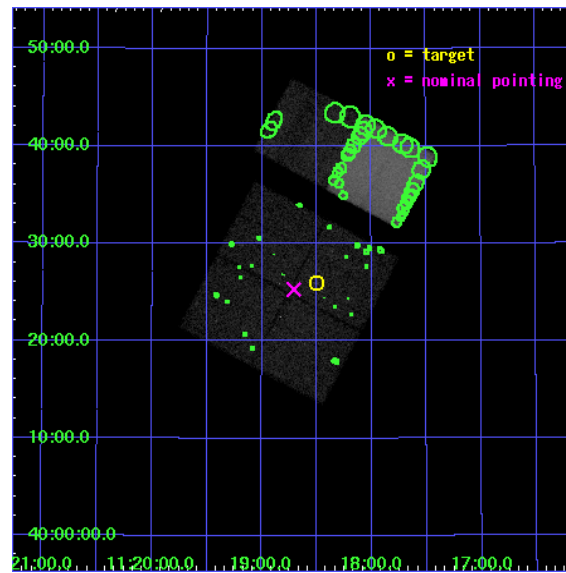
L2 Processing Date : Jun 9 2007

## Contents

<b>1</b>	<b>Front</b>	<b>2</b>
<b>2</b>	<b>OBI</b>	<b>3</b>
2.1	OBI . . . . .	3
2.1.1	Images . . . . .	3
2.1.2	Bias . . . . .	3
2.1.3	Parameters . . . . .	4
2.1.4	Events . . . . .	4
2.2	Compared Parameters . . . . .	5
2.3	Aspect . . . . .	6
2.4	Star Slots . . . . .	9
2.4.1	Slot 3 . . . . .	9
2.4.2	Slot 4 . . . . .	10
2.4.3	Slot 5 . . . . .	11
2.4.4	Slot 6 . . . . .	12
2.4.5	Slot 7 . . . . .	13
2.5	FID Slots . . . . .	14
2.5.1	Slot 0 . . . . .	14
2.5.2	Slot 1 . . . . .	15
2.5.3	Slot 2 . . . . .	16
<b>3</b>	<b>Point Sources</b>	<b>17</b>
<b>A</b>	<b>Summary</b>	<b>18</b>
A.1	Status . . . . .	18
A.2	Comments . . . . .	18

# 1 Front

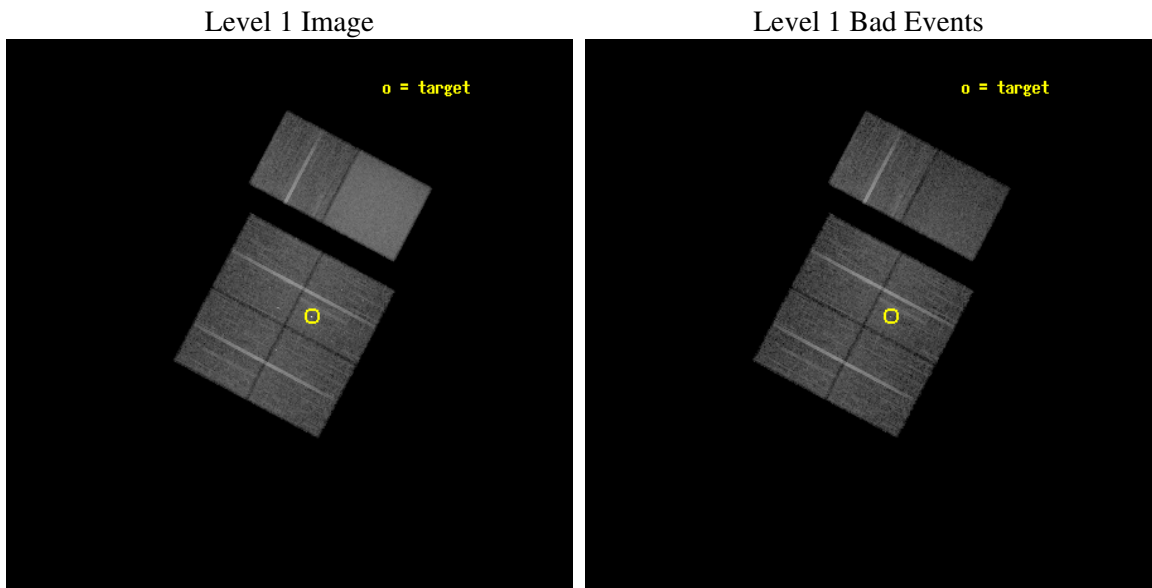
seq_num	700173
obs_id	868
title	IMAGING OF 2 NARROW LINE TYPE 1 AGN
observer	Dr. Fabrizio Fiore
object	PG 1115+407
dtcycle	0
cycle	P
ra_targ	169.62625
dec_targ	40.431667
ra_nom	169.67695991795
dec_nom	40.421560118901
roll_nom	27.883379906182
revision	2
ontime	19955.159058362
livetime	19702.474818811
ontime0	19958.400018588
ontime1	19958.400018588
ontime2	19955.159058347
ontime3	19955.159058362
ontime6	19955.159058347
ontime7	19958.400018588
l2events	191938



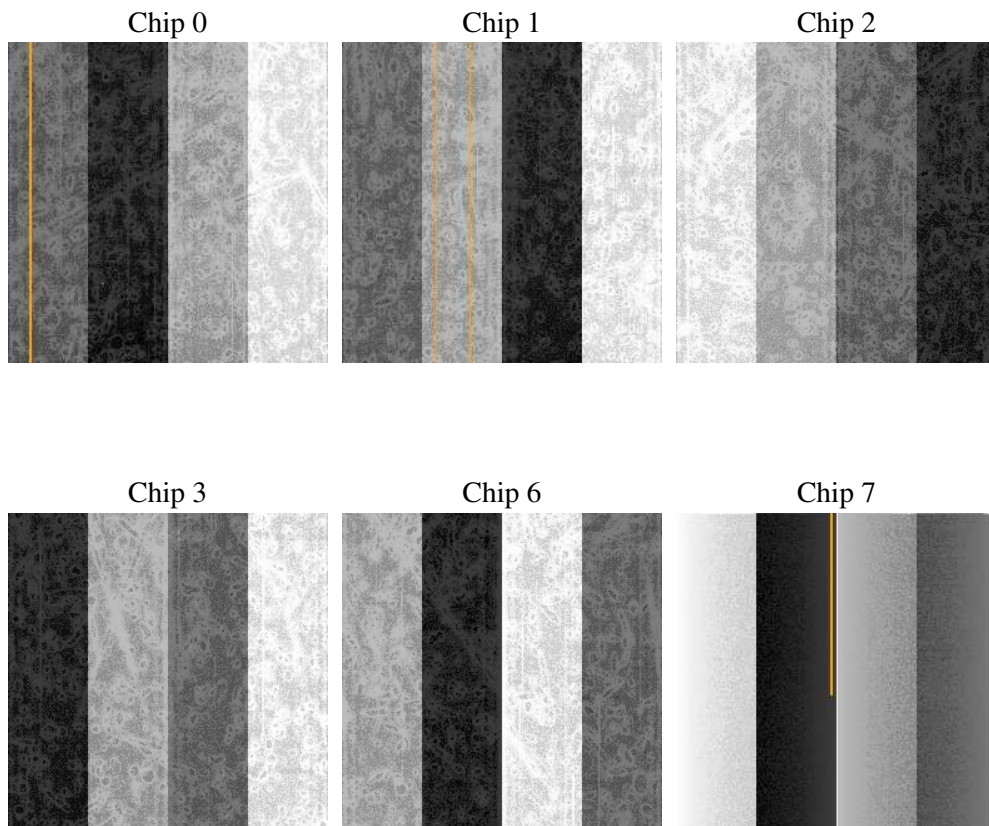
## 2 OBI

### 2.1 OBI

#### 2.1.1 Images



#### 2.1.2 Bias



### 2.1.3 Parameters

obi_num	0
ascdsver	7.6.10
caldsver	3.4.0
date	2007-06-09T16:57:42
revision	2

sched_exp_time	20000.000000
ontime	19955.159058362
ontime0	19958.400018588
ontime1	19958.400018588
ontime2	19955.159058347
ontime3	19955.159058362
ontime6	19955.159058347
ontime7	19958.400018588
l1events	805792

### 2.1.4 Events

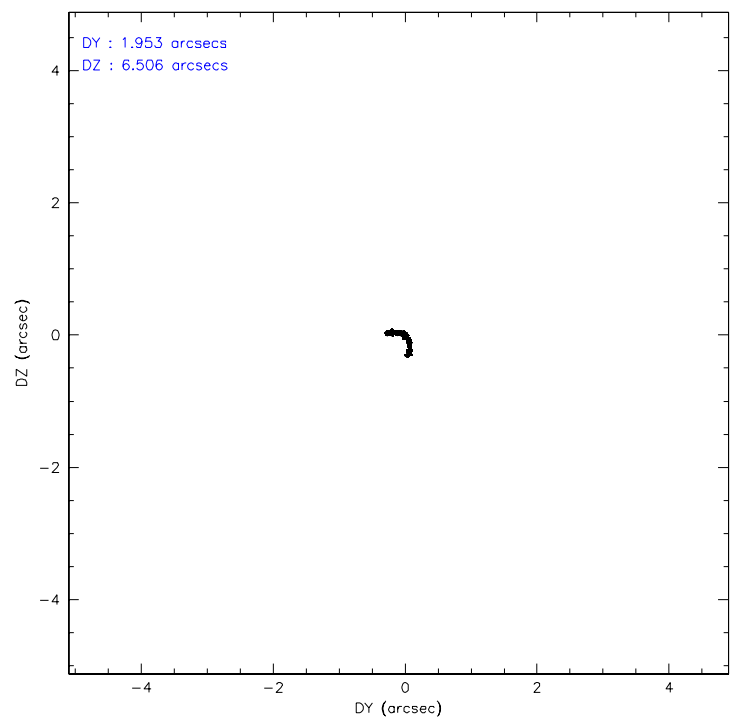
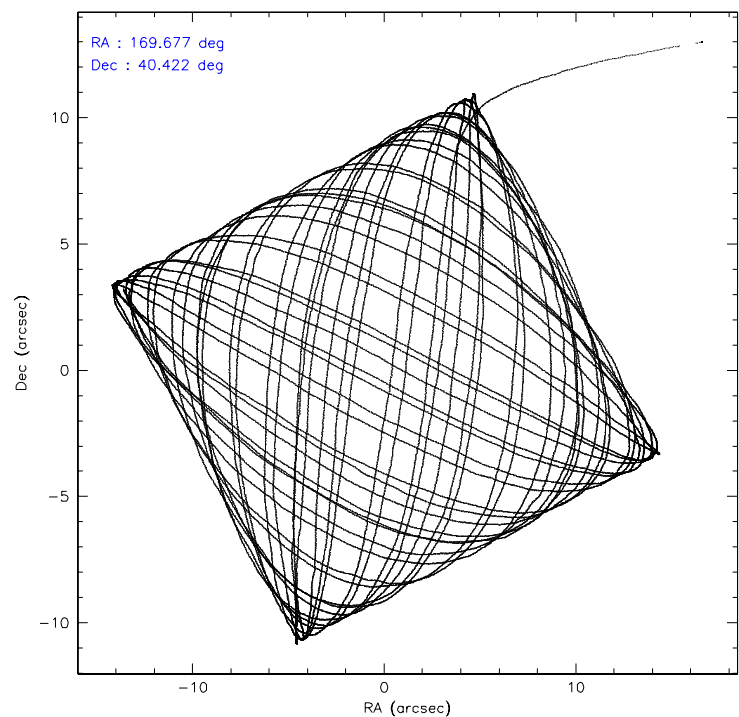
	ccd 0	ccd 1	ccd 2	ccd 3	ccd 6	ccd 7
level 1 events	111226	111464	119892	123551	129431	210228
rejected events	96400	95505	104836	105883	112670	86134
rejected %	86%	85%	87%	85%	87%	40%

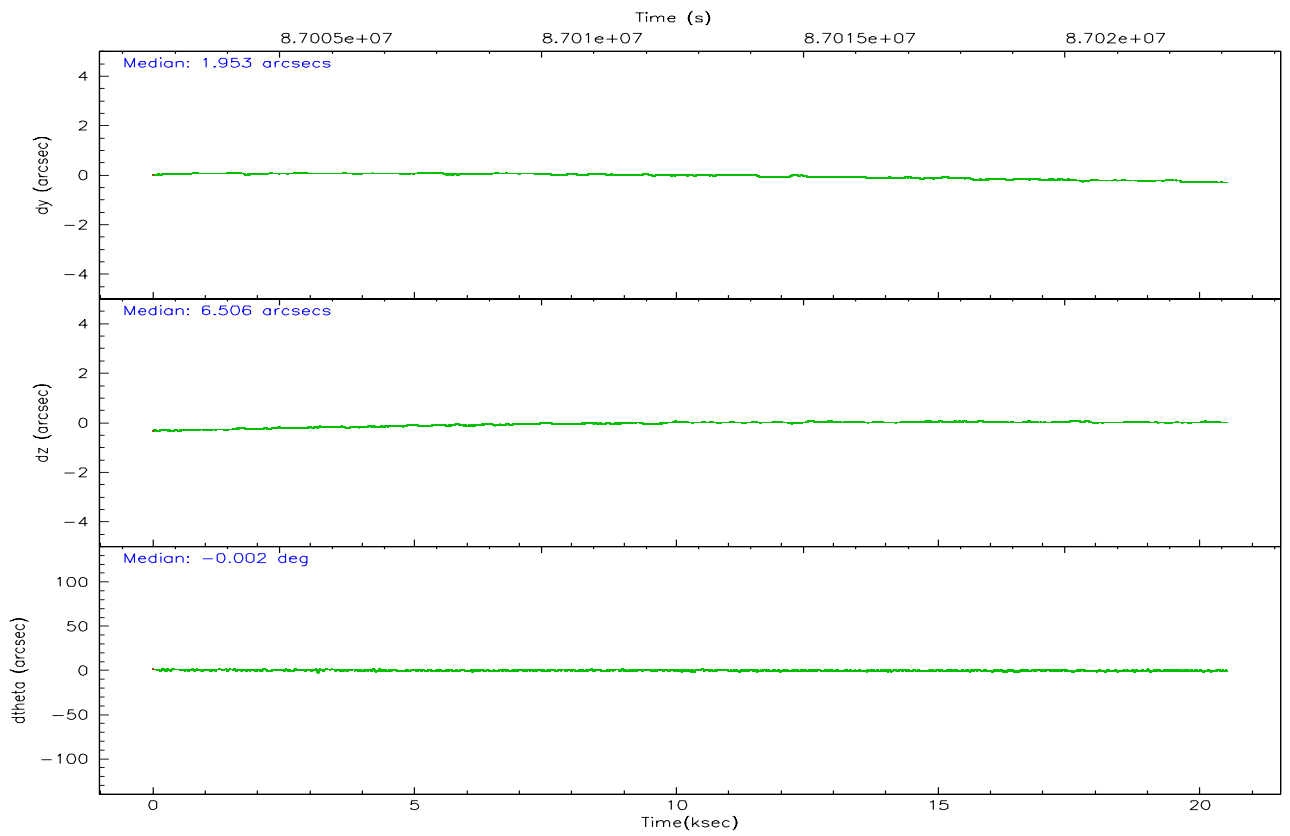
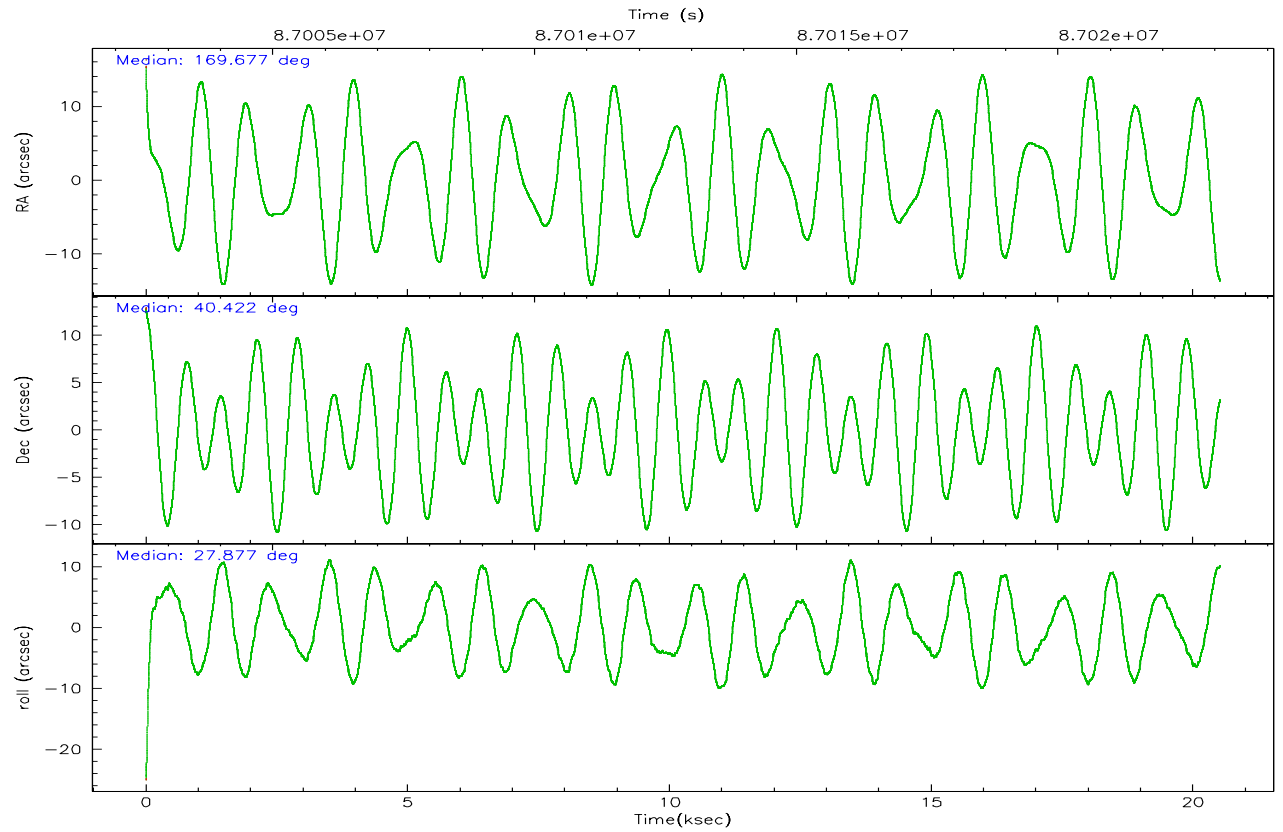
	ccd 0	ccd 1	ccd 2	ccd 3	ccd 6	ccd 7
grade 0 events	6984	7216	7324	9380	8258	14781
	6%	6%	6%	7%	6%	7%
grade 1 events	51	49	52	202	57	168
	0%	0%	0%	0%	0%	0%
grade 2 events	2948	3111	2988	3108	3073	23352
	2%	2%	2%	2%	2%	11%
grade 3 events	1356	1483	1324	1346	1404	10521
	1%	1%	1%	1%	1%	5%
grade 4 events	1220	1474	1262	1447	1276	10460
	1%	1%	1%	1%	0%	4%
grade 5 events	4061	4334	3836	4368	4934	14089
	3%	3%	3%	3%	3%	6%
grade 6 events	2322	2676	2161	2391	2753	65004
	2%	2%	1%	1%	2%	30%
grade 7 events	92284	91121	100945	101309	107676	71853
	82%	81%	84%	81%	83%	34%

## 2.2 Compared Parameters

Parameter	Planned	Actual	Parameter	Planned	Actual
Instrument	ACIS	ACIS	Obspar format version number	6	6
Detector	ACIS-012367	ACIS-012367	Obspar file type	PREDICTED	ACTUAL
Grating	NONE	NONE	Obspar update status	NONE	UPDATED
Data mode	VFAINT	VFAINT	Number of optional ACIS chips dropped	0	0
Observation mode	POINTING	POINTING	On-chip summing requested	N	N
Pointing RA	169.657665	169.6769599179513	Subarray requested	NONE	NONE
Pointing Dec	40.398298	40.4215601189012	Alternating exposures requested	N	N
Pointing Roll	27.687220	27.88337990618163	Primary exposure time	3.200000	3.2
SIM focus pos (mm)	-0.782348	-0.7809083437167272			
SIM defocus (mm)	0	0.001439871863259334			
SIM translation stage pos (mm)	-233.592463	-233.5874344608287			
SIM translation stage offset (mm)	0	-0.005018542100998502			
Observation start time	87003097.184000	87001961.47124299			
Observation start date	2000-10-03T23:30:33	2000-10-03T23:12:41			
Observation end time	87023097.184000	87023516.709556			
Observation end date	2000-10-04T05:03:53	2000-10-04T05:11:56			
Read mode	TIMED	TIMED			

## 2.3 Aspect





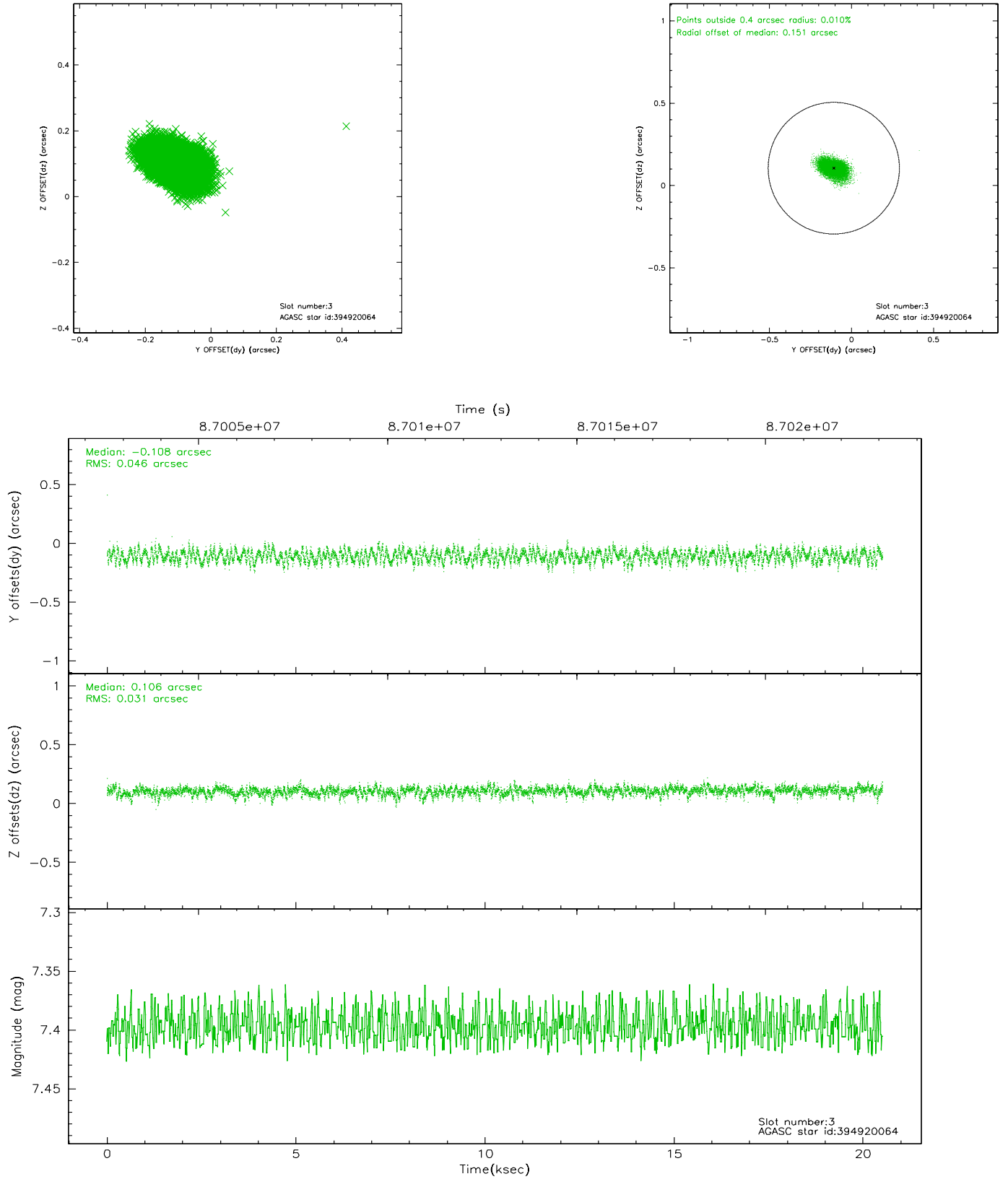
### Slot Statistics

slot	status	id	mag	n_pts	med_dy	med_dz	dr1	dr2	ra	dec	mean_y	mean_z
0	FID	ACIS-I-2	7.15	5004	-0.036	-0.047	0.009	0.015	0.000000	0.000000	-756.29	-836.25
1	FID	ACIS-I-4	7.18	5004	-0.069	0.041	0.009	0.017	0.000000	0.000000	2157.65	1069.93
2	FID	ACIS-I-5	7.23	5005	0.005	0.075	0.011	0.017	0.000000	0.000000	-1809.85	1068.01
3	GUIDE	394920064	7.40	10009	-0.108	0.106	0.059	0.096	170.399341	40.430982	1857.66	-832.28
4	GUIDE	394920792	8.30	10007	-0.061	0.059	0.058	0.099	170.410155	40.280807	1637.19	-1326.81
5	GUIDE	394540984	9.07	10008	0.123	-0.067	0.074	0.124	169.035193	40.529906	-1285.82	1215.97
6	GUIDE	394534584	9.39	10000	0.007	-0.062	0.107	0.167	169.479815	40.837337	304.74	1625.23
7	GUIDE	394921296	9.58	10006	0.038	-0.033	0.126	0.210	170.797199	40.193273	2440.93	-2091.34

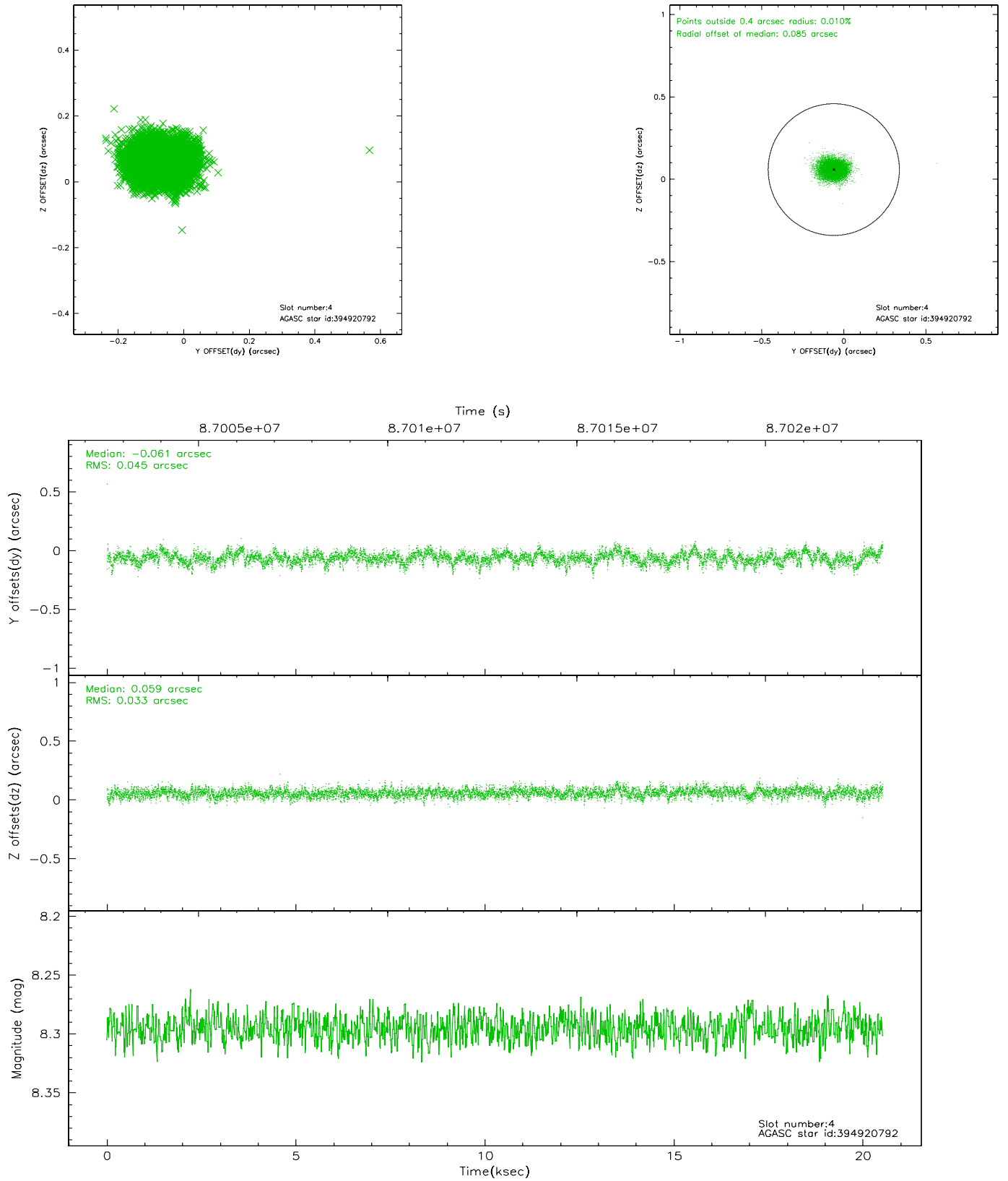


## 2.4 Star Slots

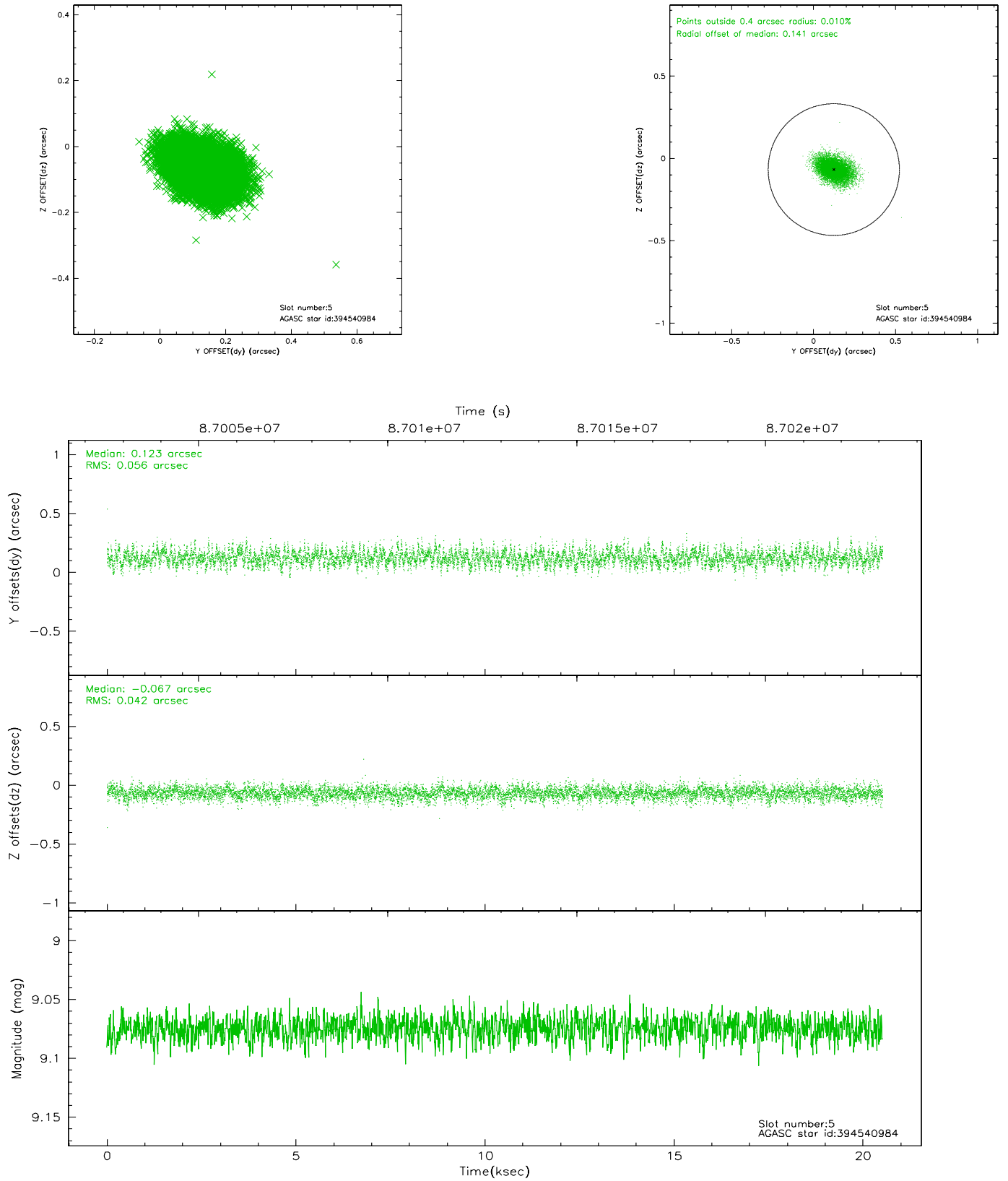
### 2.4.1 Slot 3



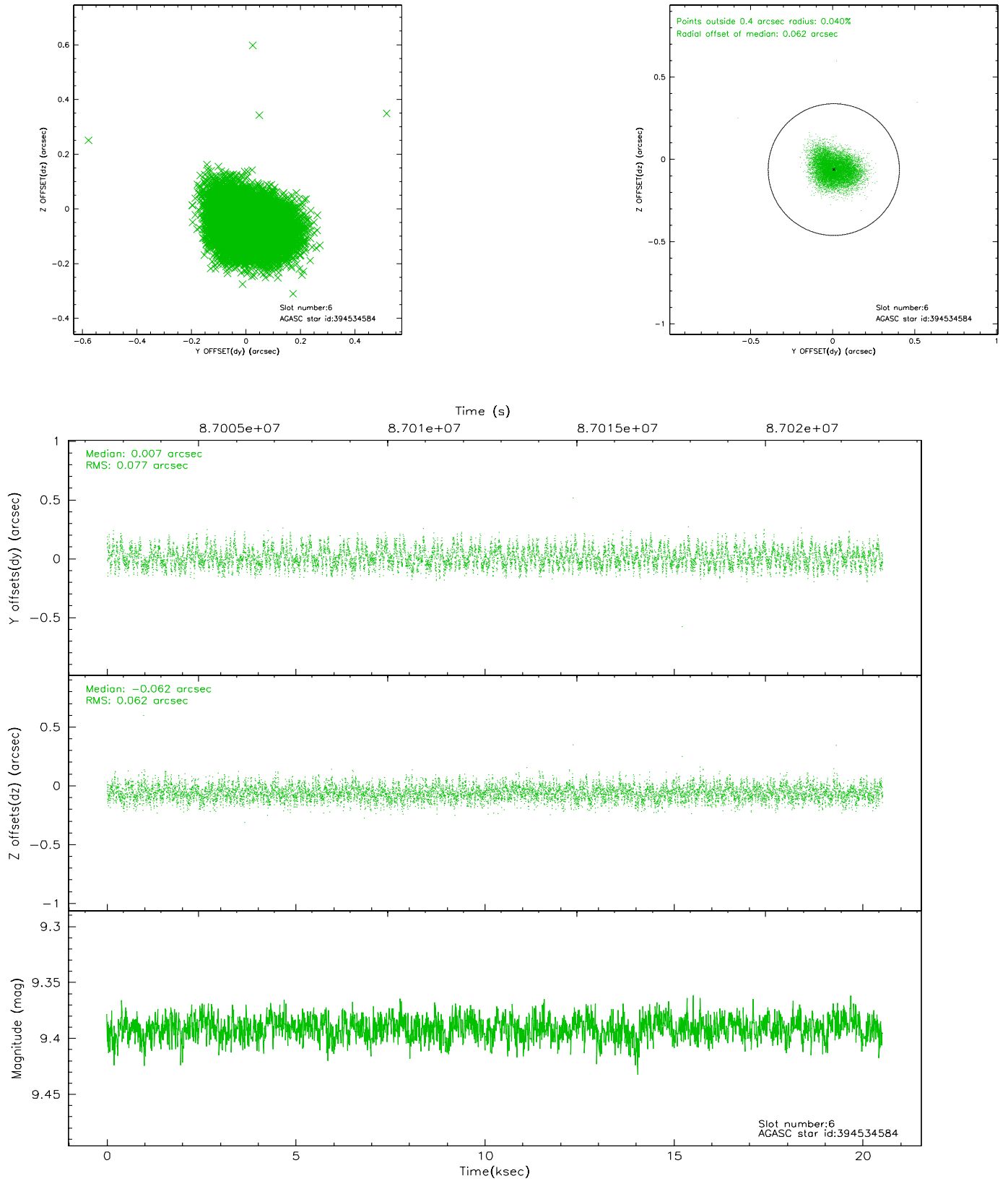
## 2.4.2 Slot 4



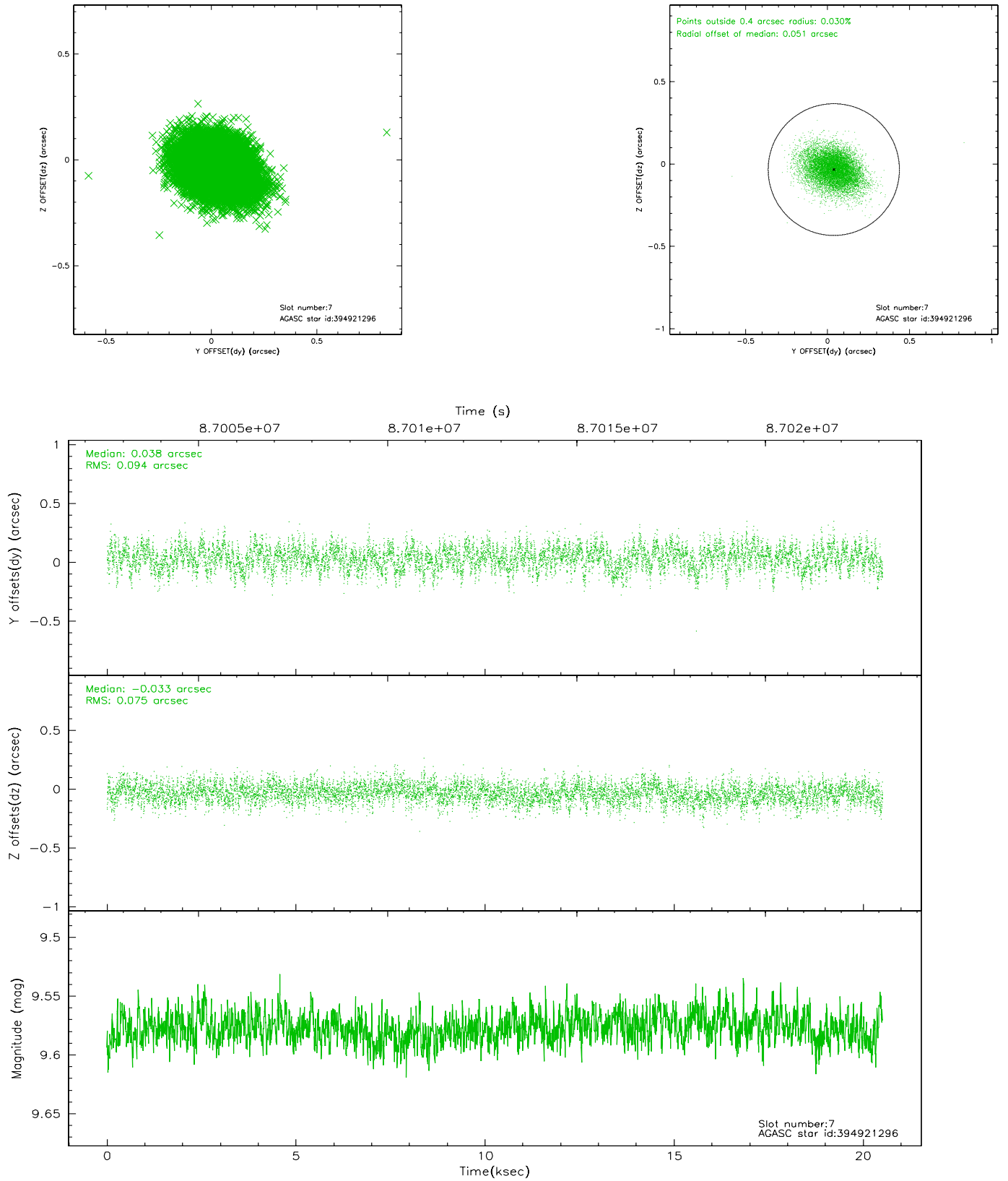
### 2.4.3 Slot 5



## 2.4.4 Slot 6

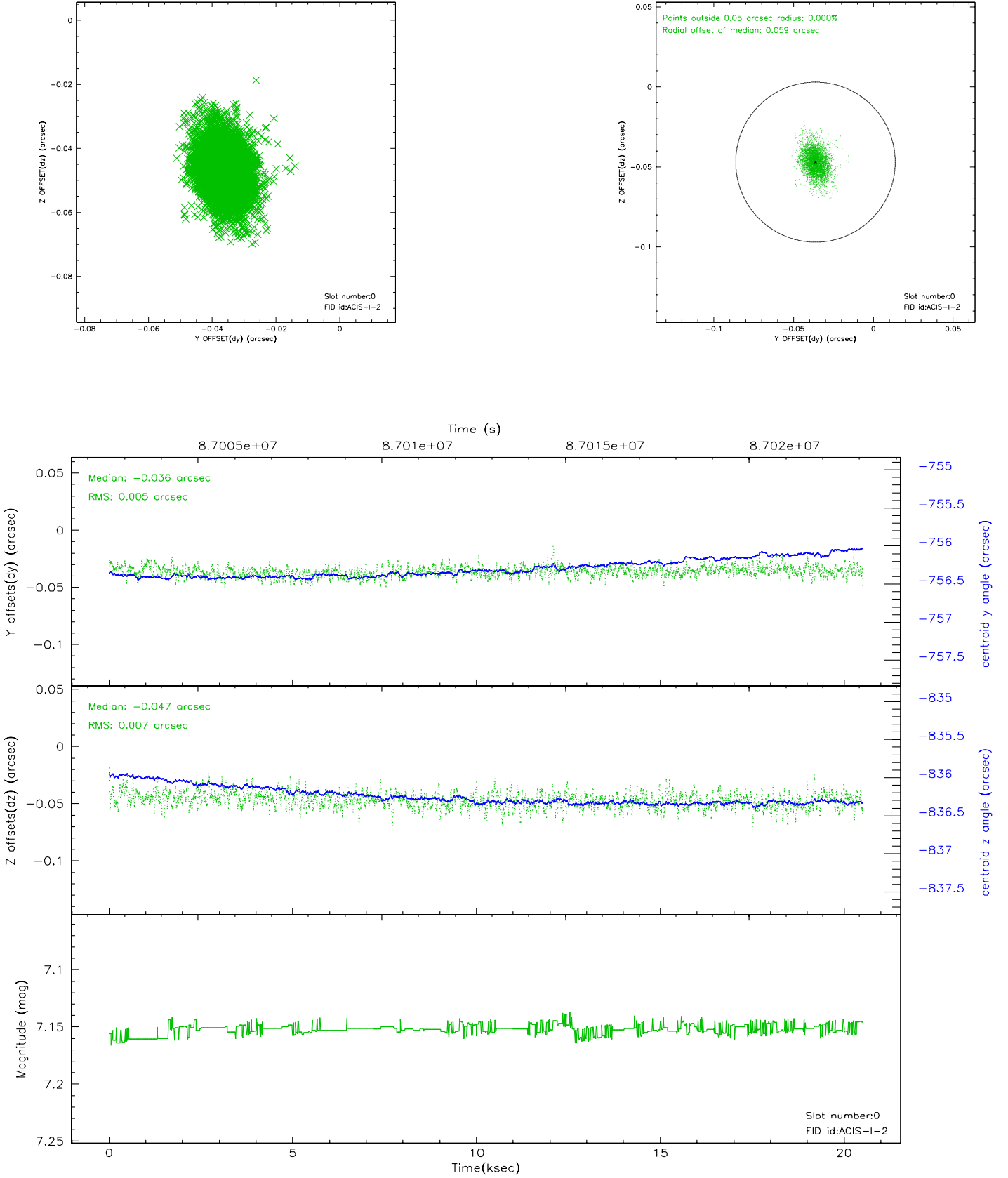


## 2.4.5 Slot 7

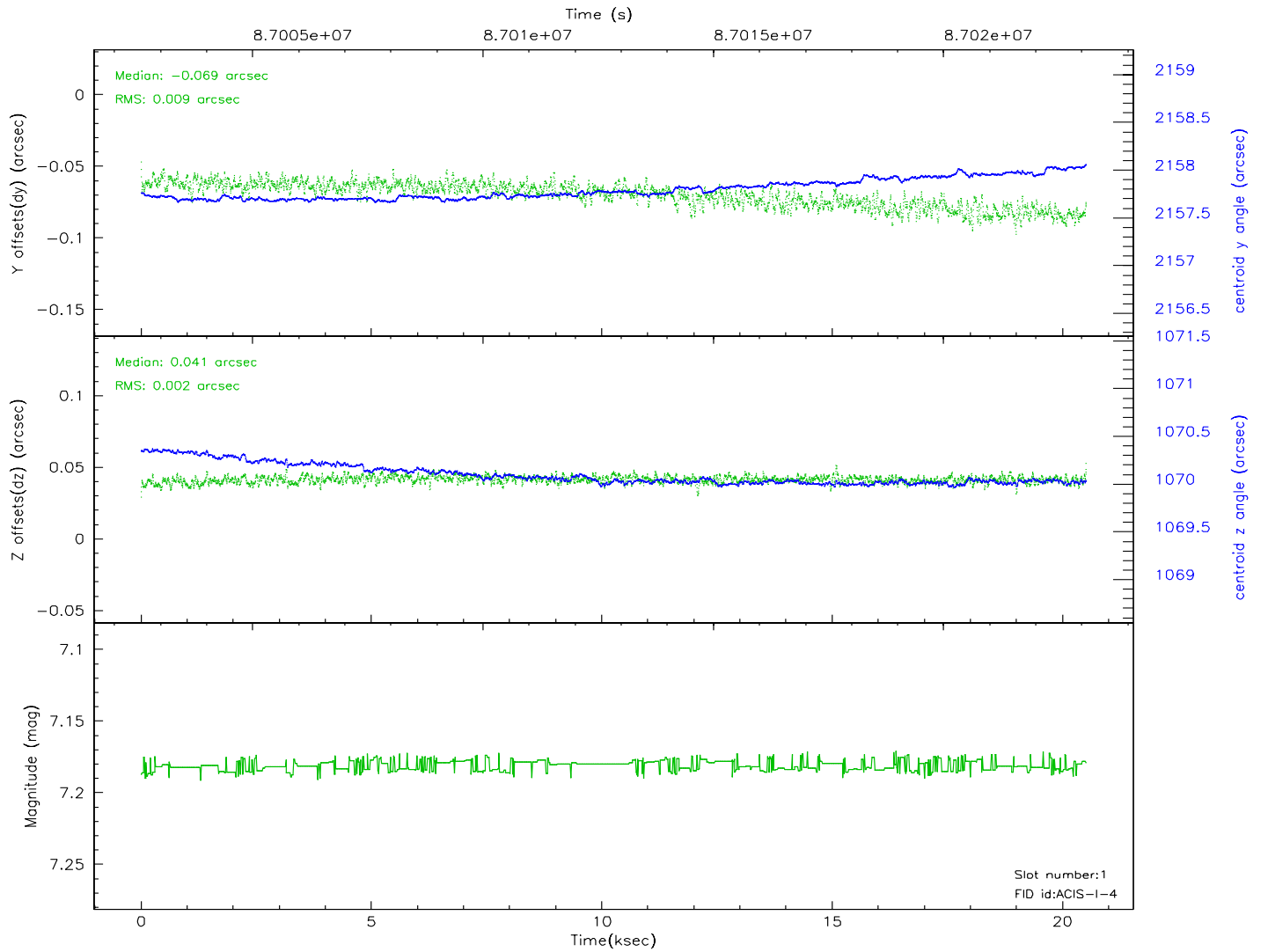
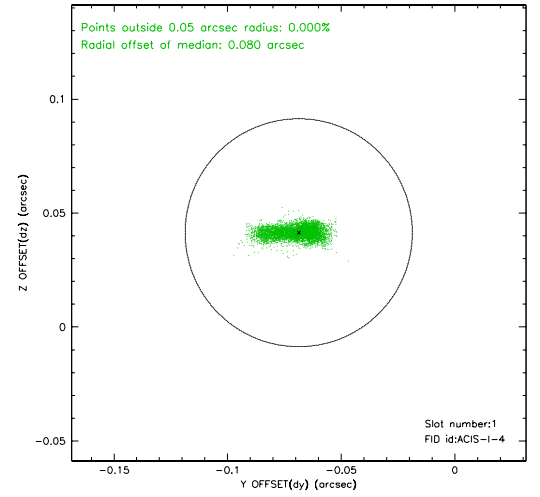
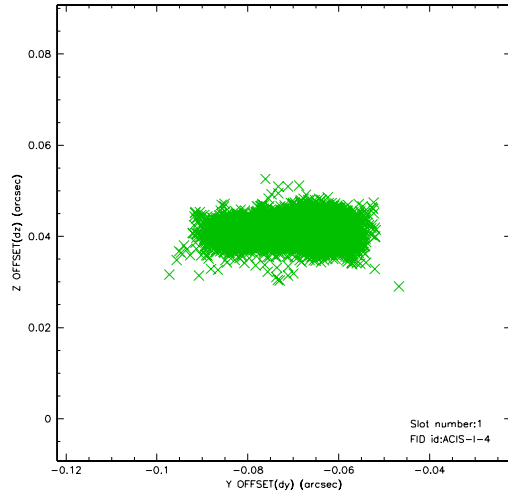


## 2.5 FID Slots

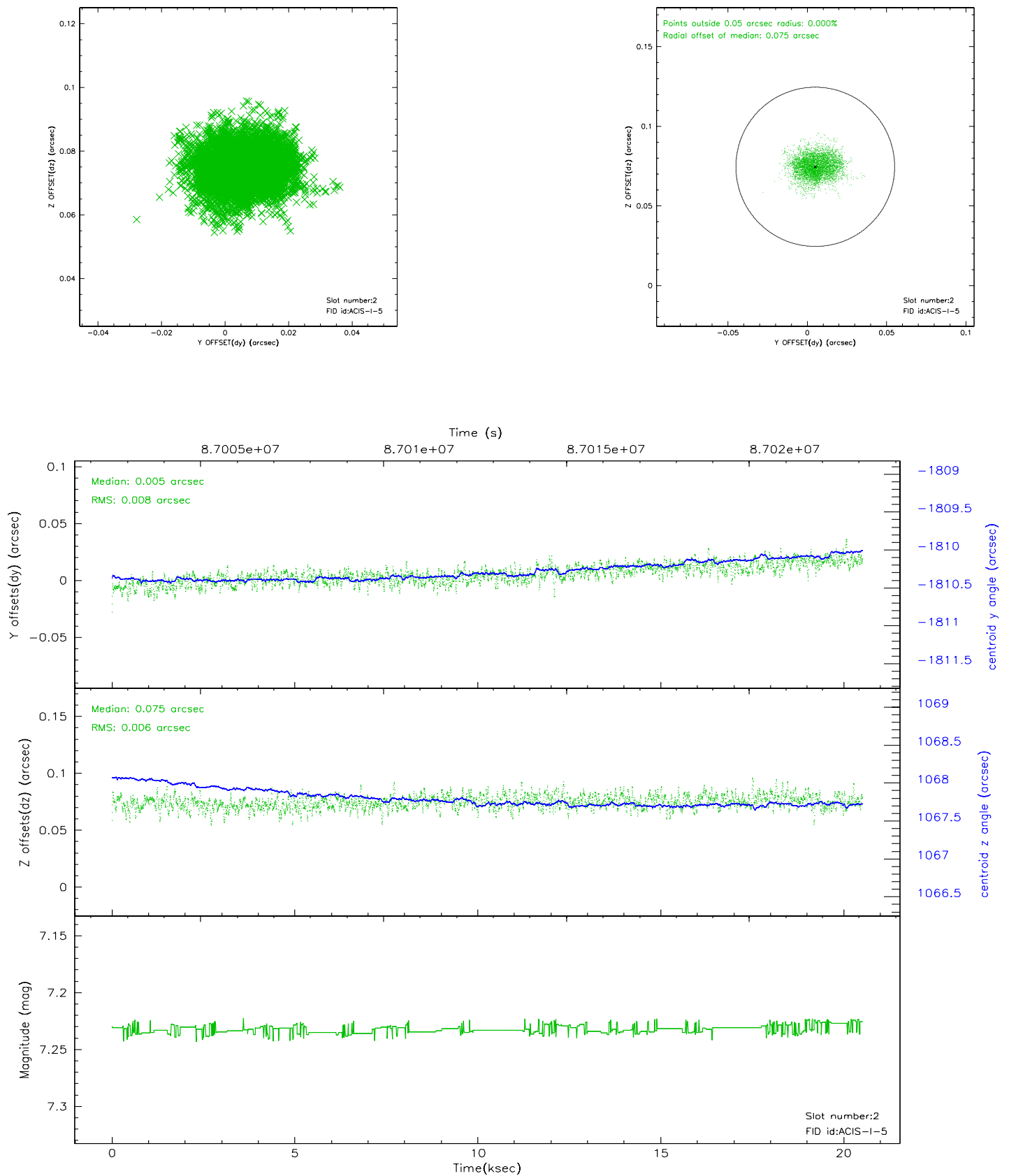
### 2.5.1 Slot 0



## 2.5.2 Slot 1

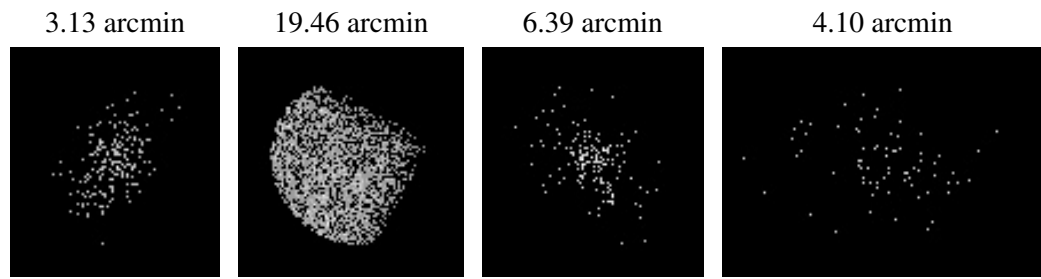


### 2.5.3 Slot 2





### 3 Point Sources



## A Summary

### A.1 Status

V&V Scientist	Beth Sundheim
V&V Date (YYYY-MM-DD)	2007.06.11
V&V Edition	1
V&V Disposition and Status	OK
V&V Charge Time	19.955

### A.2 Comments