

V&V Reference Report

L2 ASCDS Version : 8.4.4

Observation 8638 - L2 Version 2
Chandra X-Ray Center

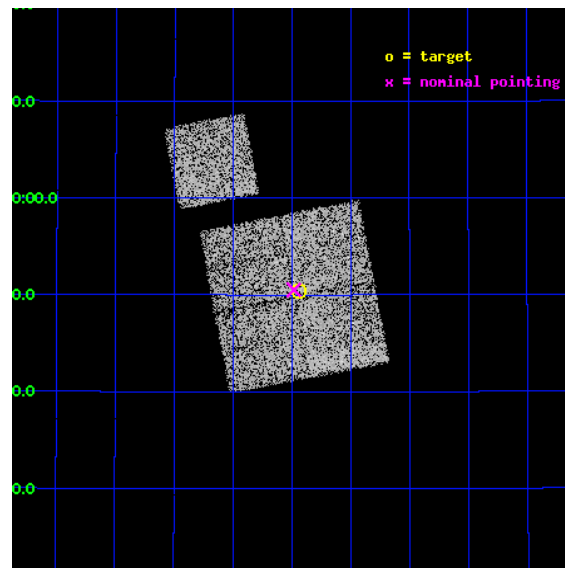
L2 Processing Date : May 5 2012

Contents

1	Front	2
2	OBI	3
2.1	OBI	3
2.1.1	Images	3
2.1.2	Bias	3
2.1.3	Parameters	4
2.1.4	Events	4
2.2	Compared Parameters	5
2.3	Aspect	6
2.4	Star Slots	9
2.4.1	Slot 3	9
2.4.2	Slot 4	10
2.4.3	Slot 5	11
2.4.4	Slot 6	12
2.4.5	Slot 7	13
2.5	FID Slots	14
2.5.1	Slot 0	14
2.5.2	Slot 1	15
2.5.3	Slot 2	16
A	Summary	17
A.1	Status	17
A.2	Comments	17

1 Front

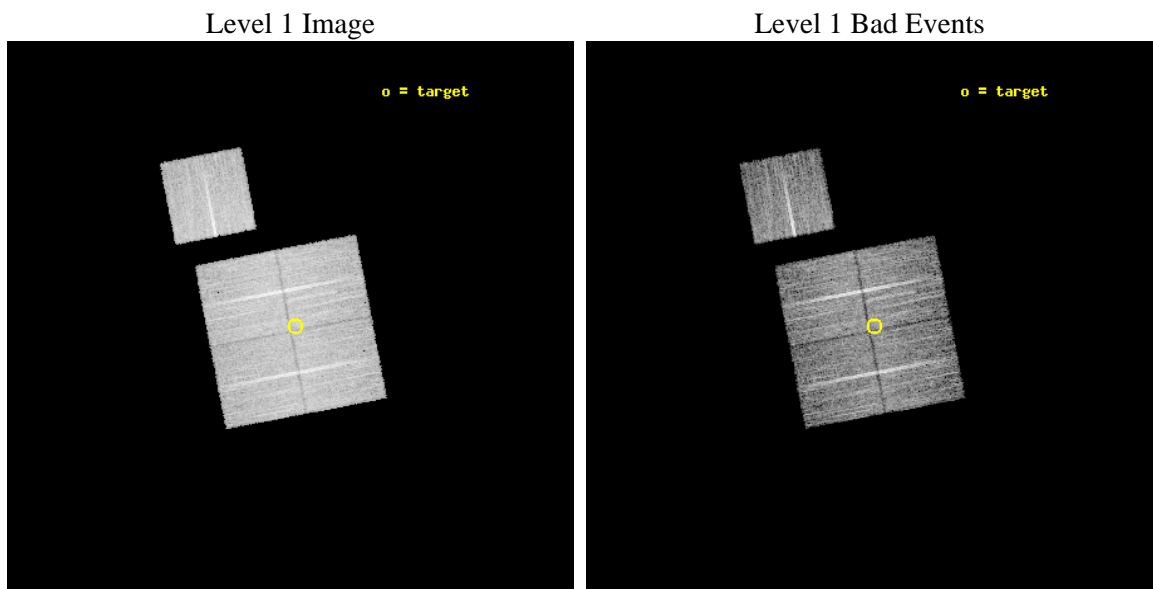
seq_num	900775	Sequence number
obs_id	8638	Observation id
title	Chandra Observations of the DEEP2 Fields	Proposal title
observer	Dr. Stephen Murray	Principal investigator
object	DEEP2 Field 2	Source name
dtcycle	0	
cycle	P	events from which exps? Prim/Second/Both
ra_targ	252.86086	Observer's specified target RA [deg]
dec_targ	34.841181	Observer's specified target Dec [deg]
ra_nom	252.87065379284	Nominal RA [deg]
dec_nom	34.842090038647	Nominal Dec [deg]
roll_nom	349.10311023991	Nominal Roll [deg]
revision	2	Processing version of data
ontime	8717.2000670433	Sum of GTIs [s]
livetime	8603.3034306581	Livetime [s]
ontime0	8717.2000670433	Sum of GTIs [s]
ontime1	8717.2000670433	Sum of GTIs [s]
ontime2	8714.0591067076	Sum of GTIs [s]
ontime3	8717.2000670433	Sum of GTIs [s]
ontime6	8717.2000670433	Sum of GTIs [s]
l2events	29223	Number of level 2 events



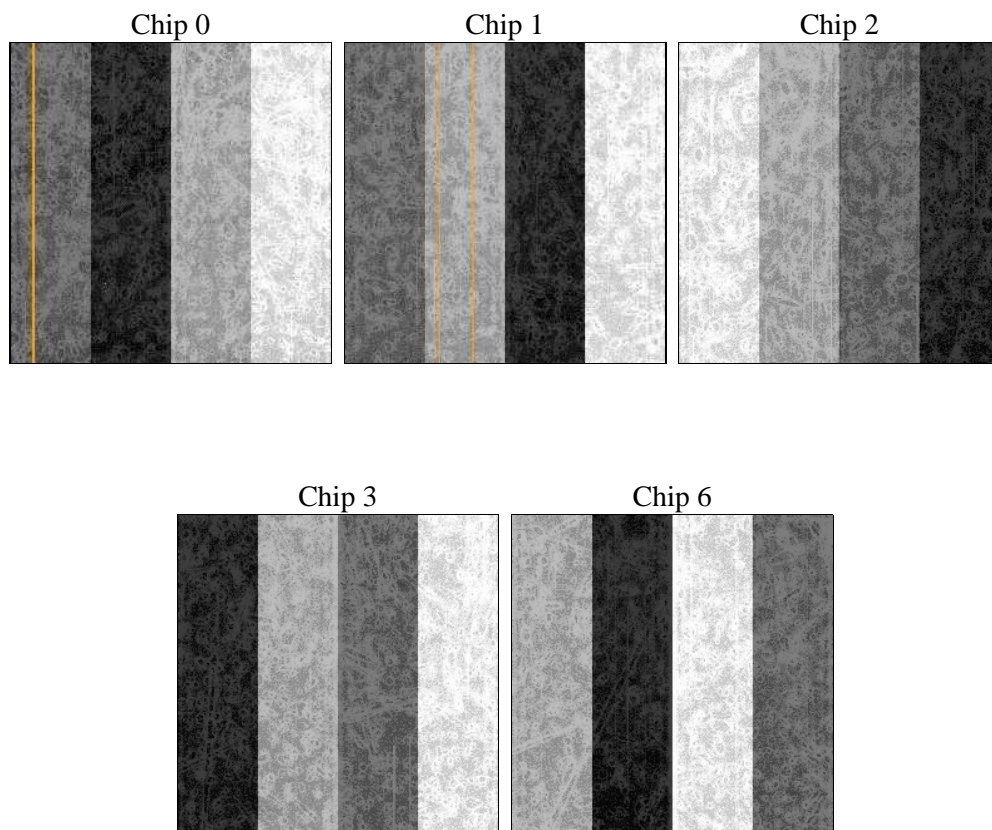
2 OBI

2.1 OBI

2.1.1 Images



2.1.2 Bias



2.1.3 Parameters

obi_num	0	Obi number	sched_exp_time	8941.000000	[s] Scheduled observation exposure time
ascdsver	8.4.4	Processing system revision	ontime	8717.2000670433	Sum of GTIs [s]
caldsver	4.4.9	 	ontime0	8717.2000670433	Sum of GTIs [s]
date	2012-05-05T05:20:06	Date and time of file creation	ontime1	8717.2000670433	Sum of GTIs [s]
revision	2	Processing version of data	ontime2	8714.0591067076	Sum of GTIs [s]
			ontime3	8717.2000670433	Sum of GTIs [s]
			ontime6	8717.2000670433	Sum of GTIs [s]
			l1events	346963	Number of level 1 events

2.1.4 Events

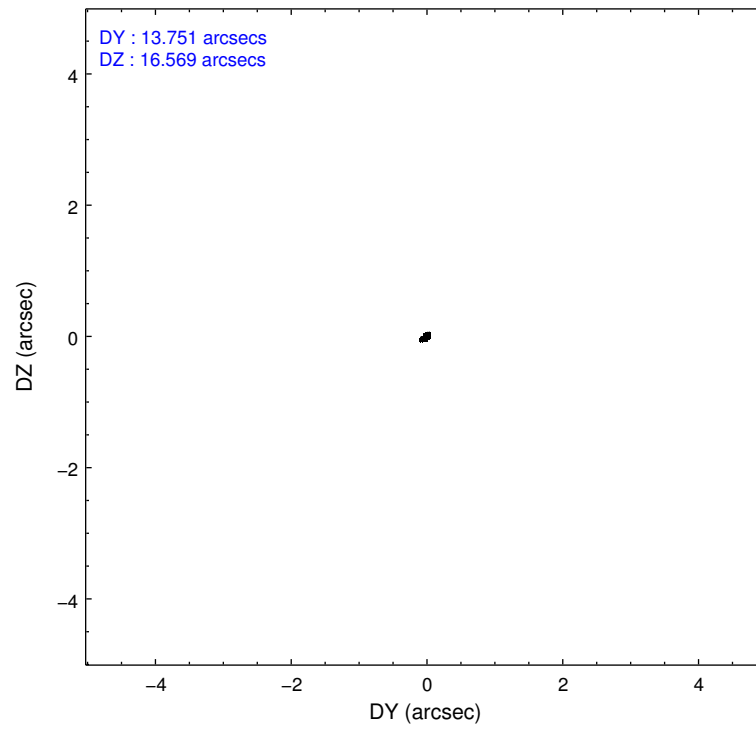
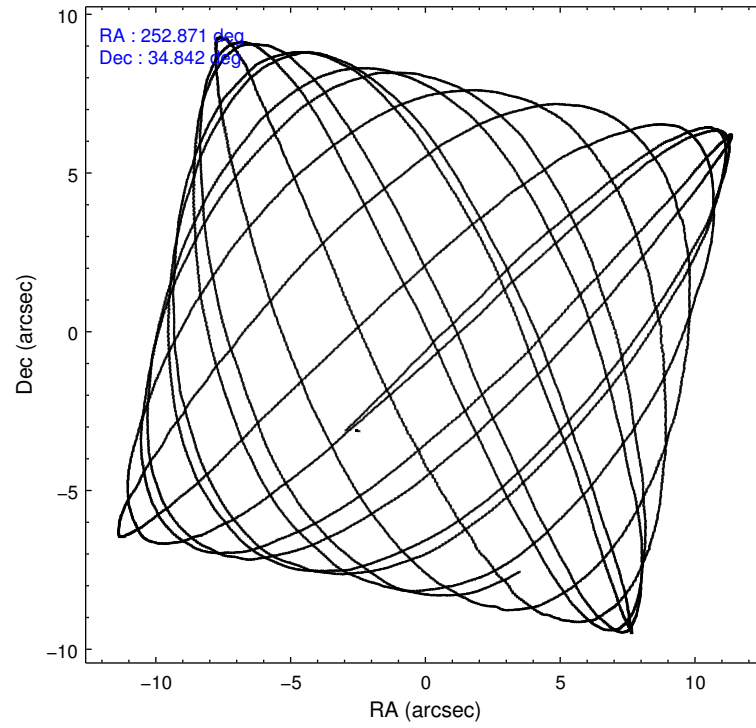
	ccd 0	ccd 1	ccd 2	ccd 3	ccd 6
level 1 events	65307	67074	75152	70807	68623
rejected events	58412	59190	68365	64263	61604
rejected %	89%	88%	90%	90%	89%

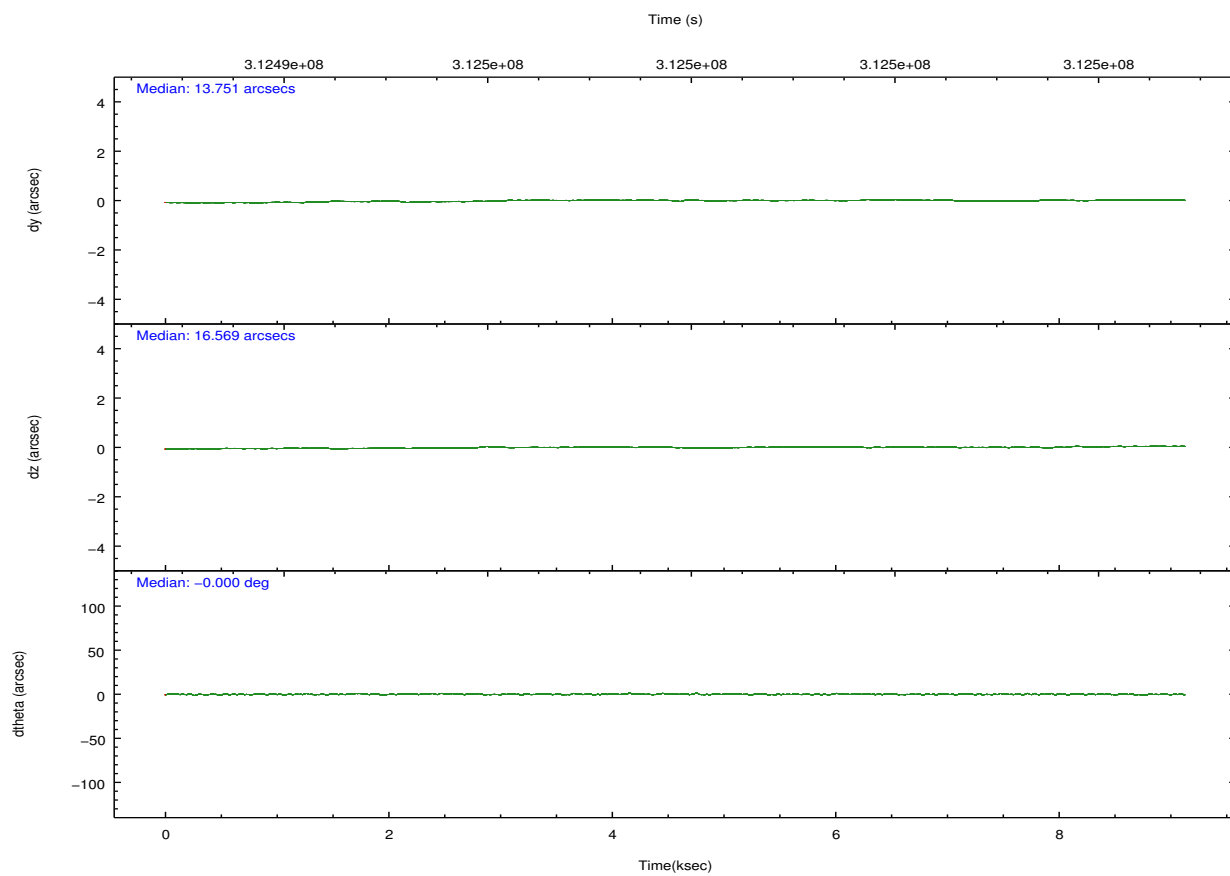
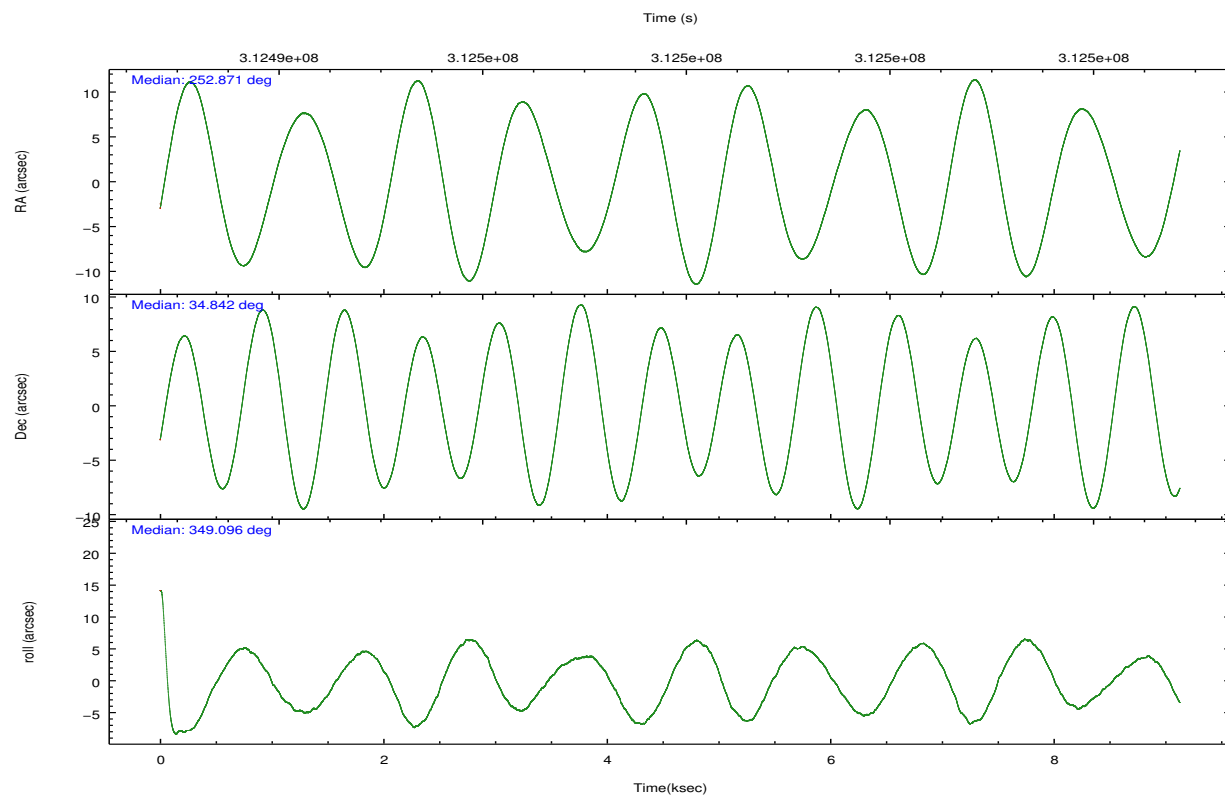
	ccd 0	ccd 1	ccd 2	ccd 3	ccd 6
grade 0 events	2477	2869	2388	2281	2408
	3%	4%	3%	3%	3%
grade 1 events	33	28	37	40	32
	0%	0%	0%	0%	0%
grade 2 events	1590	1759	1642	1403	1590
	2%	2%	2%	1%	2%
grade 3 events	787	842	761	752	744
	1%	1%	1%	1%	1%
grade 4 events	688	853	738	728	771
	1%	1%	0%	1%	1%
grade 5 events	2454	2746	2340	2738	2628
	3%	4%	3%	3%	3%
grade 6 events	1357	1561	1261	1384	1512
	2%	2%	1%	1%	2%
grade 7 events	55921	56416	65985	61481	58938
	85%	84%	87%	86%	85%

2.2 Compared Parameters

Parameter	Planned	Actual	Parameter	Planned	Actual
Instrument	ACIS	ACIS	Obspar format version number	7	7
Detector	ACIS-01236	ACIS-01236	Obspar file type	PREDICTED	ACTUAL
Grating	NONE	NONE	Obspar update status	NONE	UPDATED
Data mode	VFAINT	VFAINT	CCD I0 on	Y	Y
Observation mode	POINTING	POINTING	CCD I1 on	Y	Y
[deg] Pointing RA	252.839033	252.8706537928404	CCD I2 on	Y	Y
[deg] Pointing Dec	34.832969	34.84209003864673	CCD I3 on	Y	Y
[deg] Pointing Roll	348.912463	349.103110239913	CCD S0 on	N	N
[mm] SIM focus pos	-0.782348	-0.7809083437167272	CCD S1 on	N	N
[mm] SIM defocus	0	0.001439871863259334	CCD S2 on	O1	Y
[mm] SIM translation stage pos	-233.592463	-233.5874344608287	CCD S3 on	N	N
[mm] SIM translation stage offset	0	-0.005018542100998502	CCD S4 on	N	N
[s] Observation start time (MET)	312493466.184000	312493078.93089	CCD S5 on	N	N
Observation start date	2007-11-26T19:43:21	2007-11-26T19:37:58	Number of optional ACIS chips dropped	0	0
[s] Observation end time (MET)	312502407.184000	312502540.70635	On-chip summing requested	N	N
Observation end date	2007-11-26T22:12:22	2007-11-26T22:15:40	Subarray requested	NONE	NONE
Read mode	TIMED	TIMED	Alternating exposures requested	N	N
			[s] Primary exposure time	0.000000	3.1

2.3 Aspect



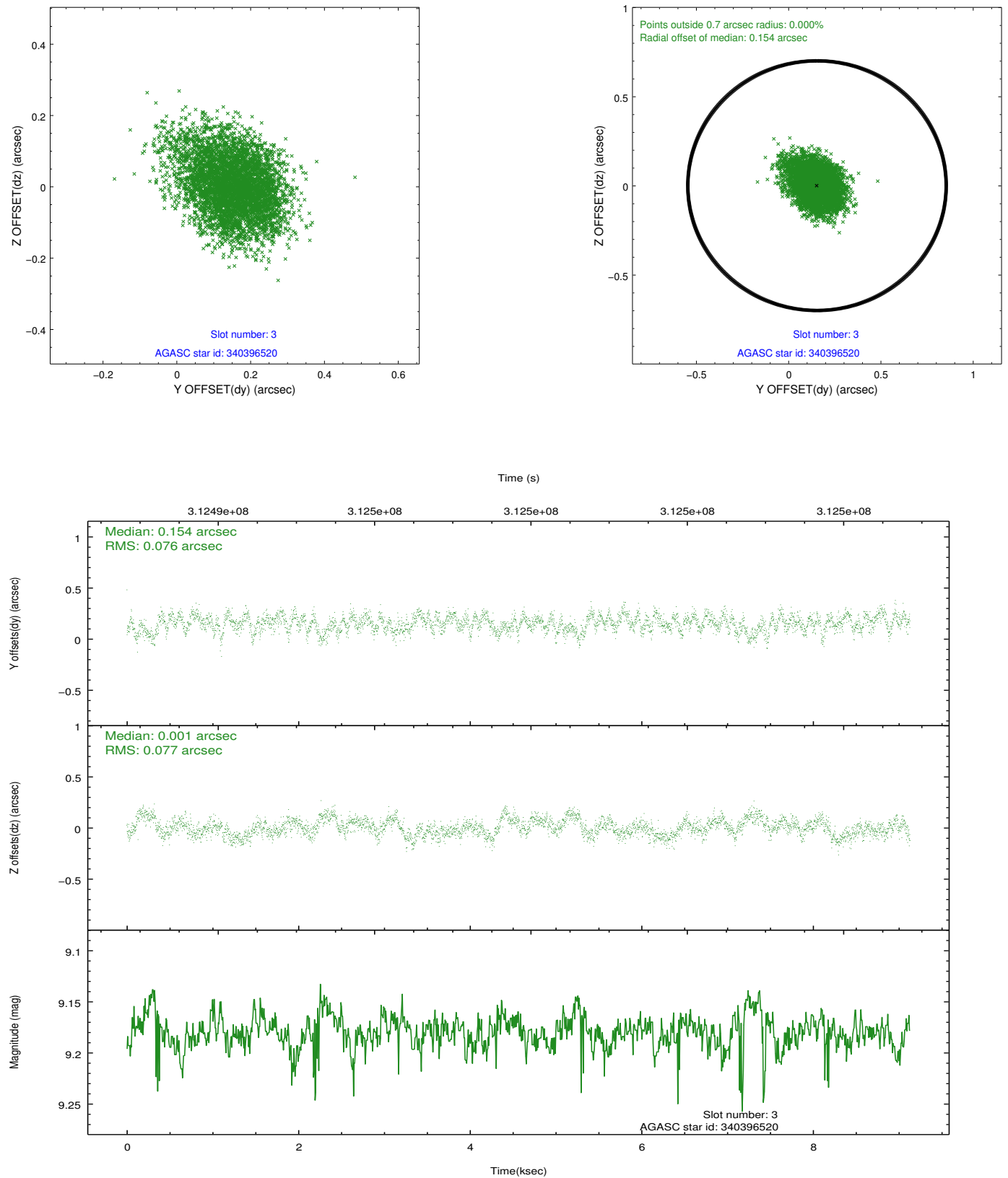


Slot Statistics

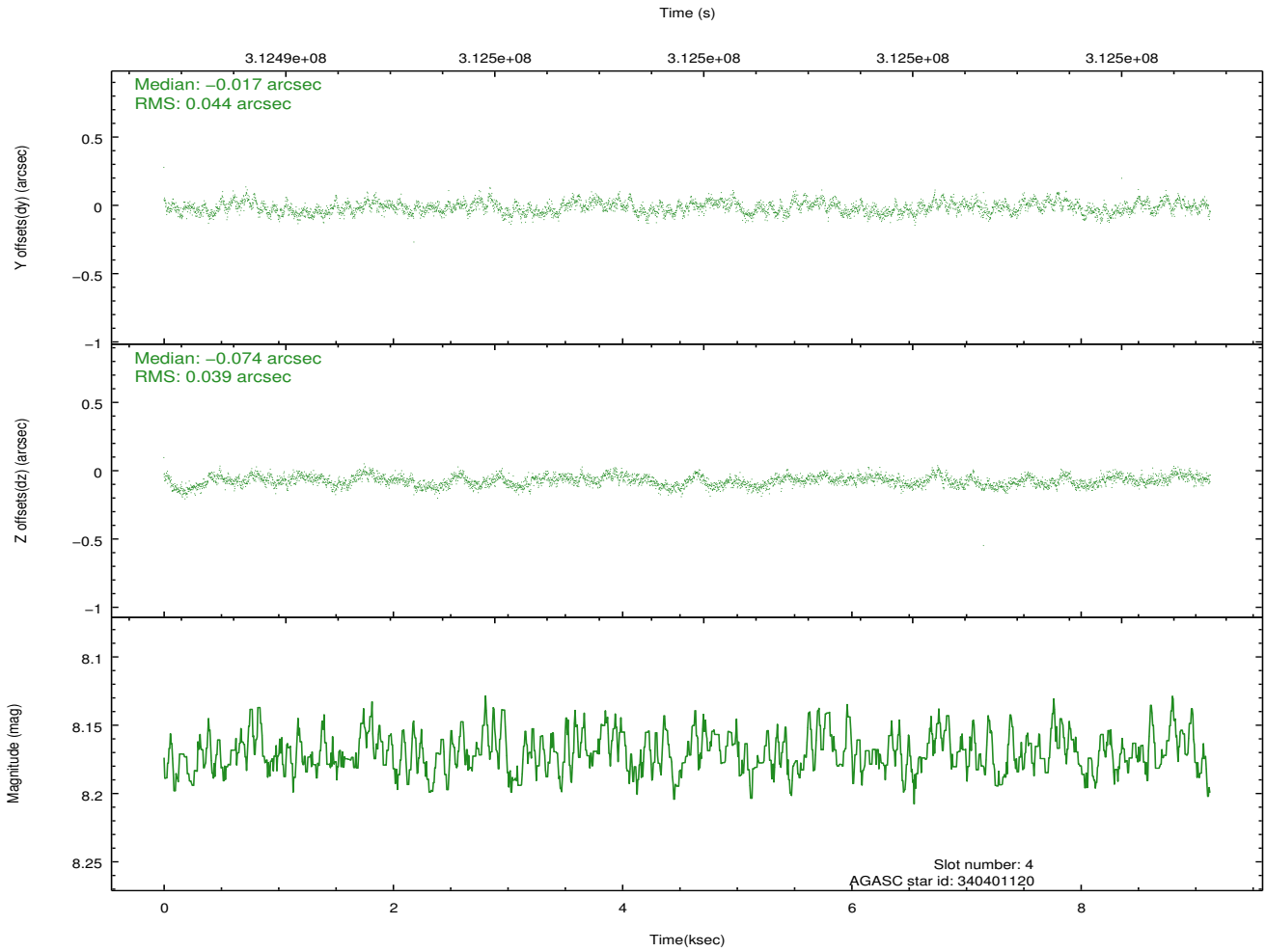
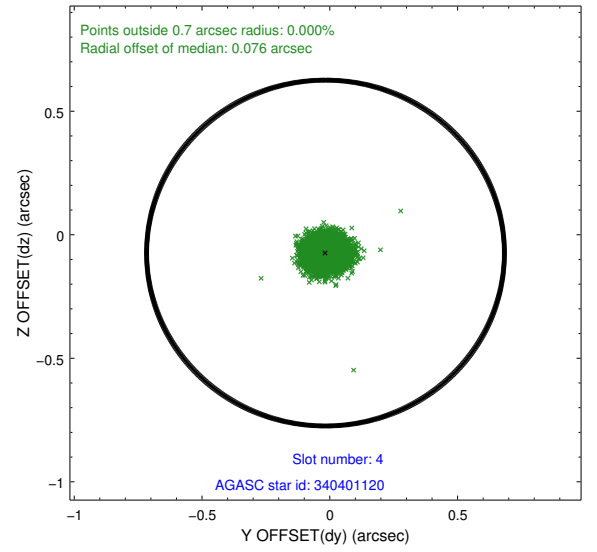
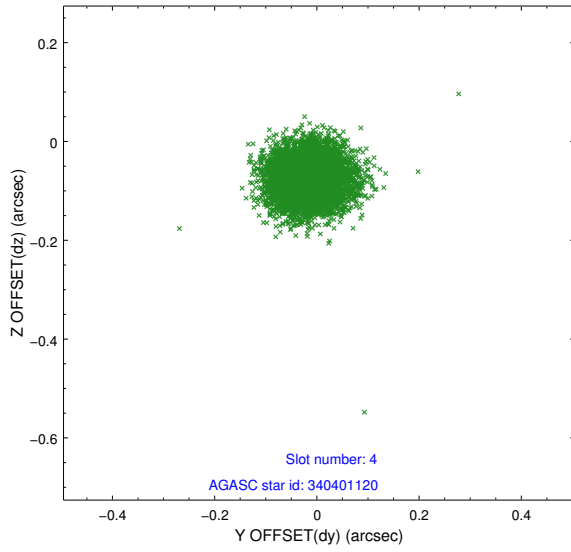
slot	status	id	mag	n_pts	med_dy	med_dz	dr1	dr2	ra	dec	mean_y	mean_z
0	FID	ACIS-I-1	7.22	2227	0.057	-0.032	0.006	0.011	0.000000	0.000000	925.79	-840.26
1	FID	ACIS-I-5	7.22	2227	-0.201	0.062	0.006	0.011	0.000000	0.000000	-1822.20	1057.10
2	FID	ACIS-I-6	7.23	2227	0.052	0.040	0.007	0.012	0.000000	0.000000	390.75	1702.20
3	GUIDE	340396520	9.18	4448	0.154	0.001	0.115	0.187	253.361058	34.111320	2027.08	-2246.42
4	GUIDE	340401120	8.17	4453	-0.017	-0.074	0.062	0.097	253.574895	35.128140	1921.23	1466.84
5	GUIDE	340402112	8.49	4449	-0.034	-0.079	0.067	0.110	253.640936	34.860529	2304.41	562.73
6	GUIDE	340405600	8.11	4451	-0.015	0.037	0.057	0.093	252.813465	34.289368	302.30	-1934.09
7	GUIDE	340401160	9.35	4449	-0.088	0.113	0.089	0.141	252.460112	35.243739	-1377.85	1238.52

2.4 Star Slots

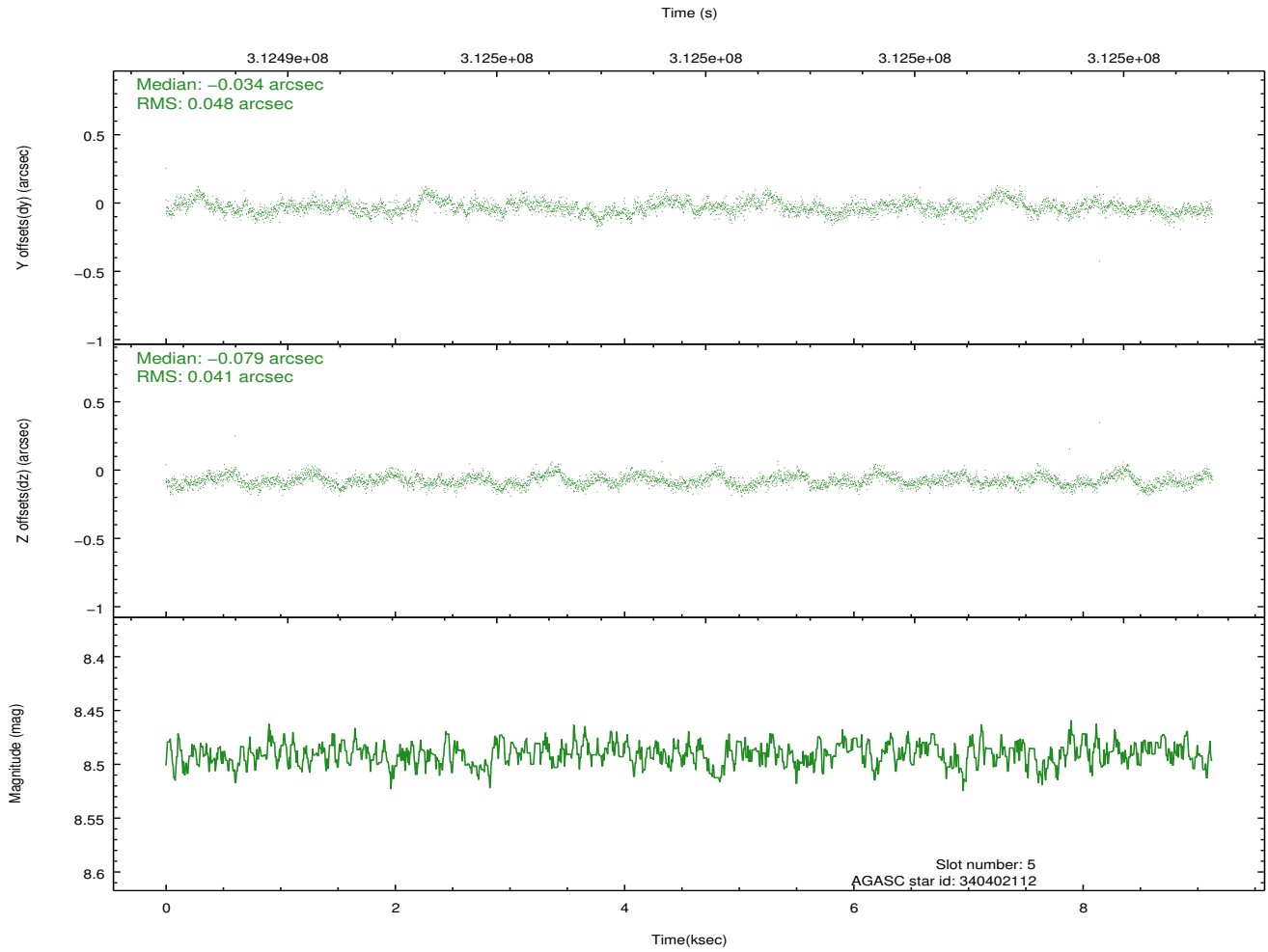
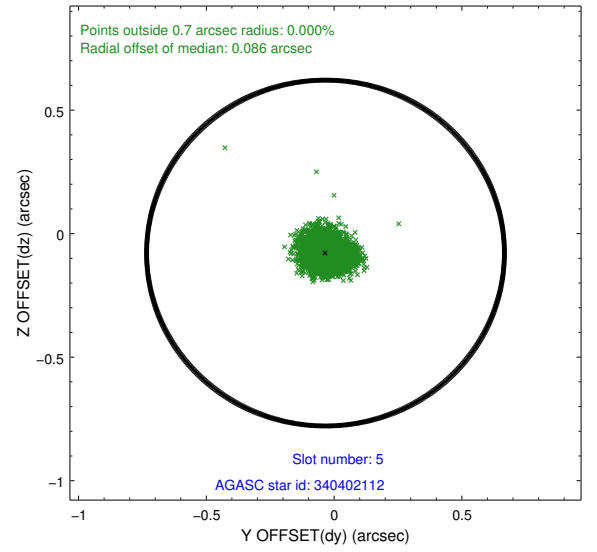
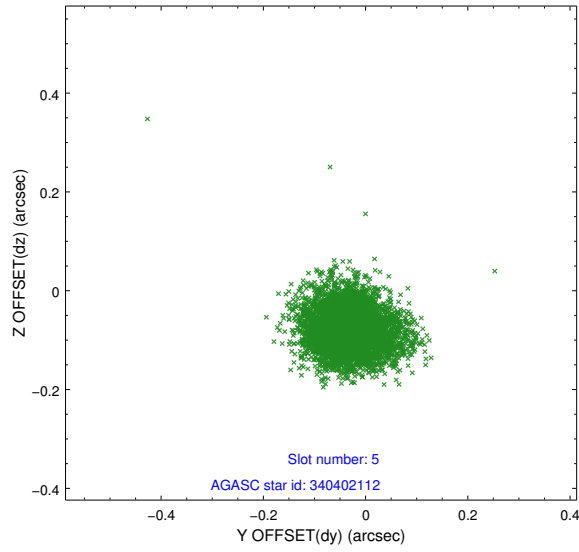
2.4.1 Slot 3



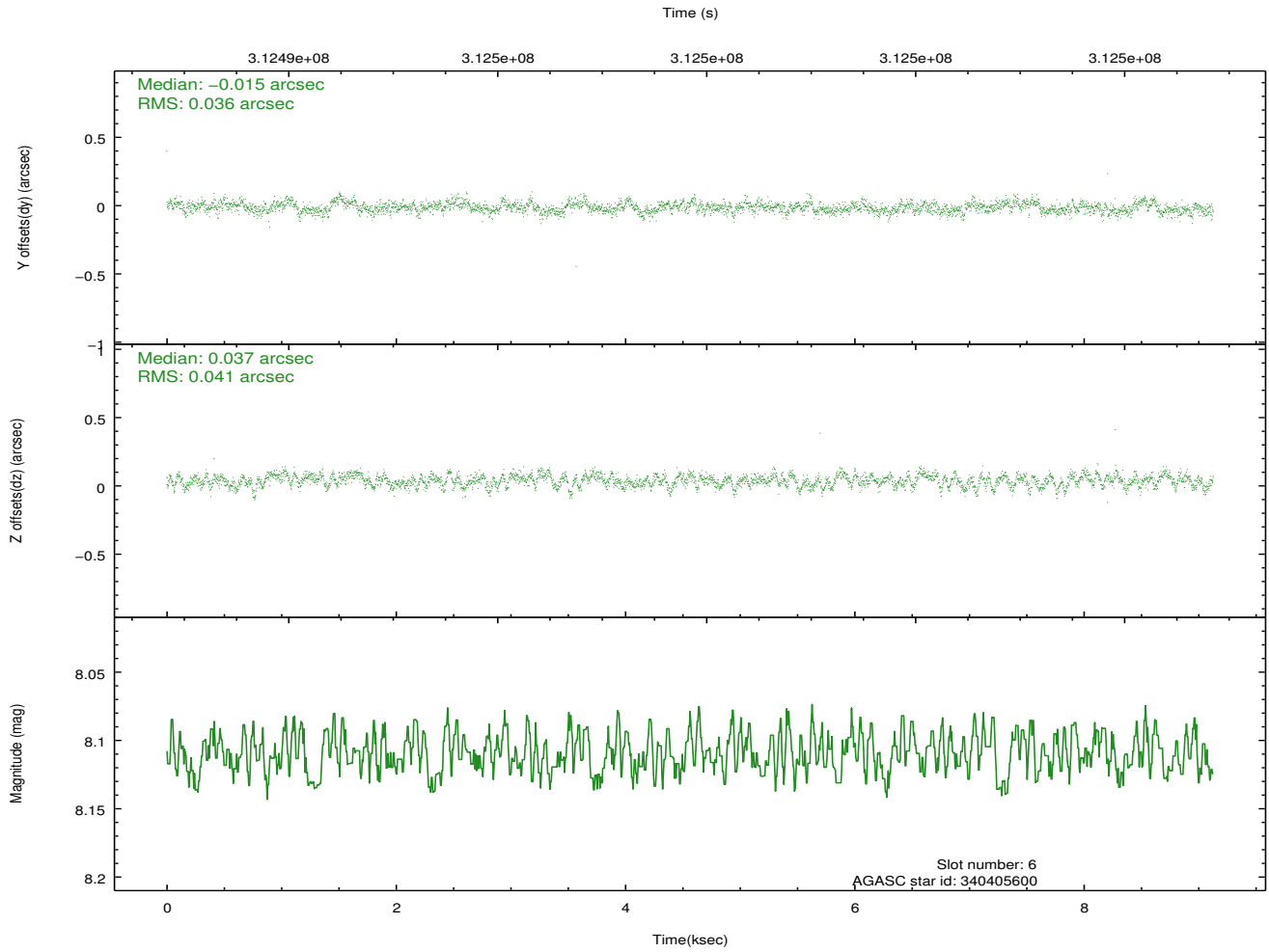
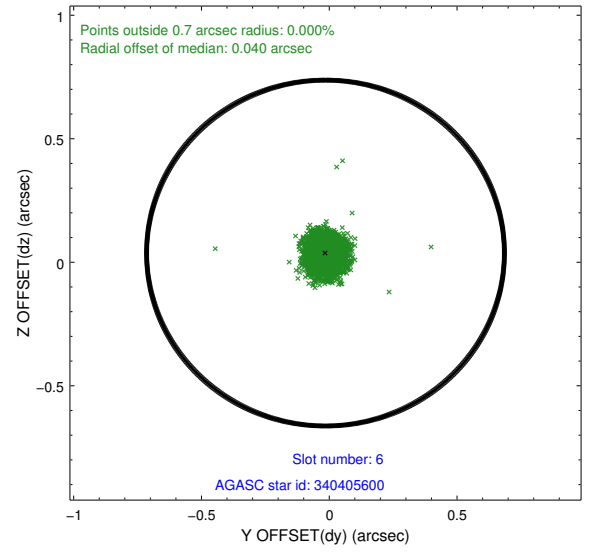
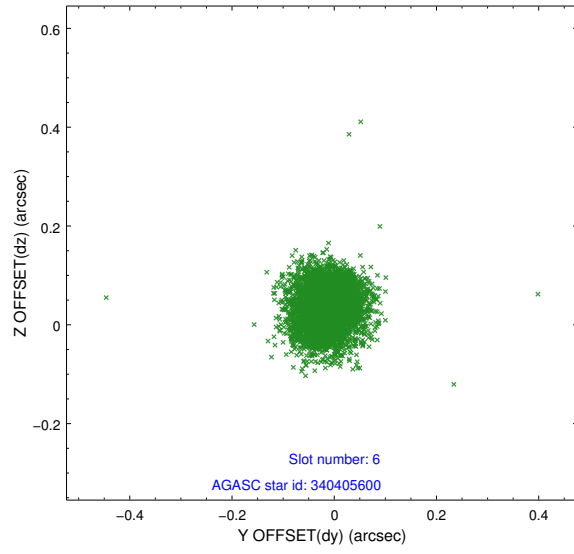
2.4.2 Slot 4



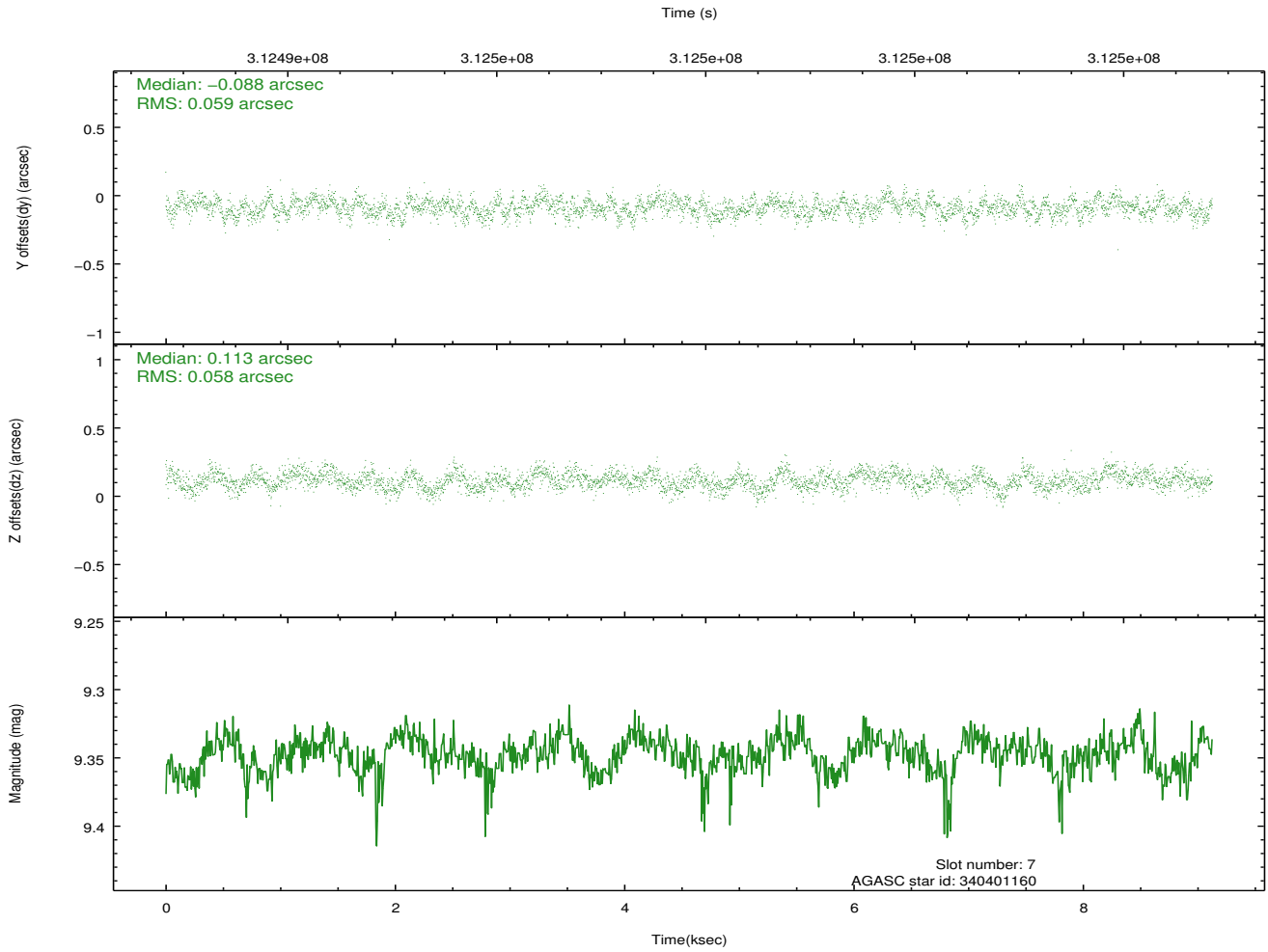
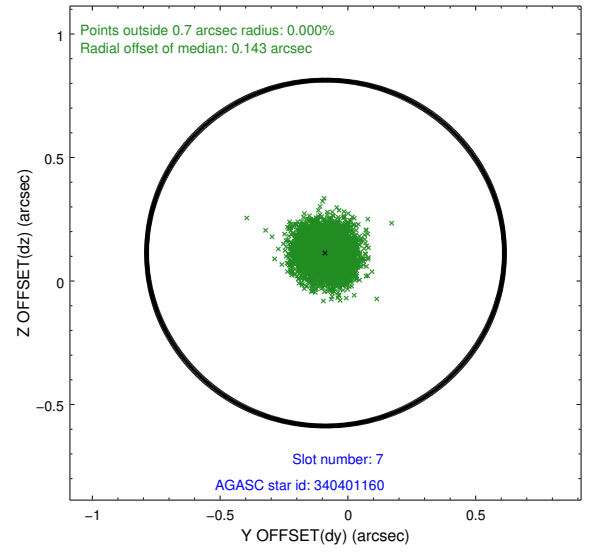
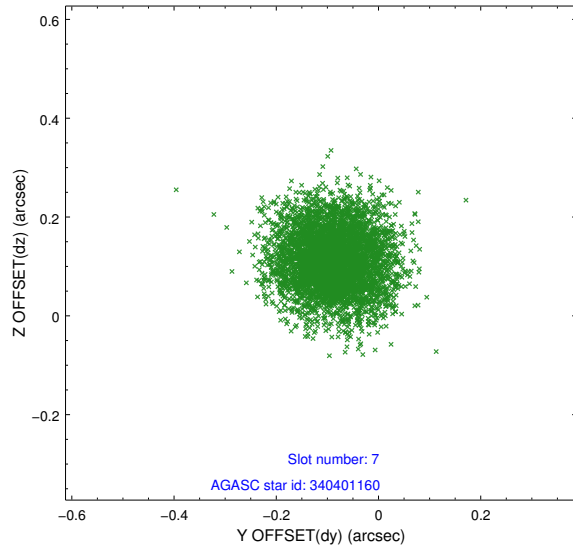
2.4.3 Slot 5



2.4.4 Slot 6

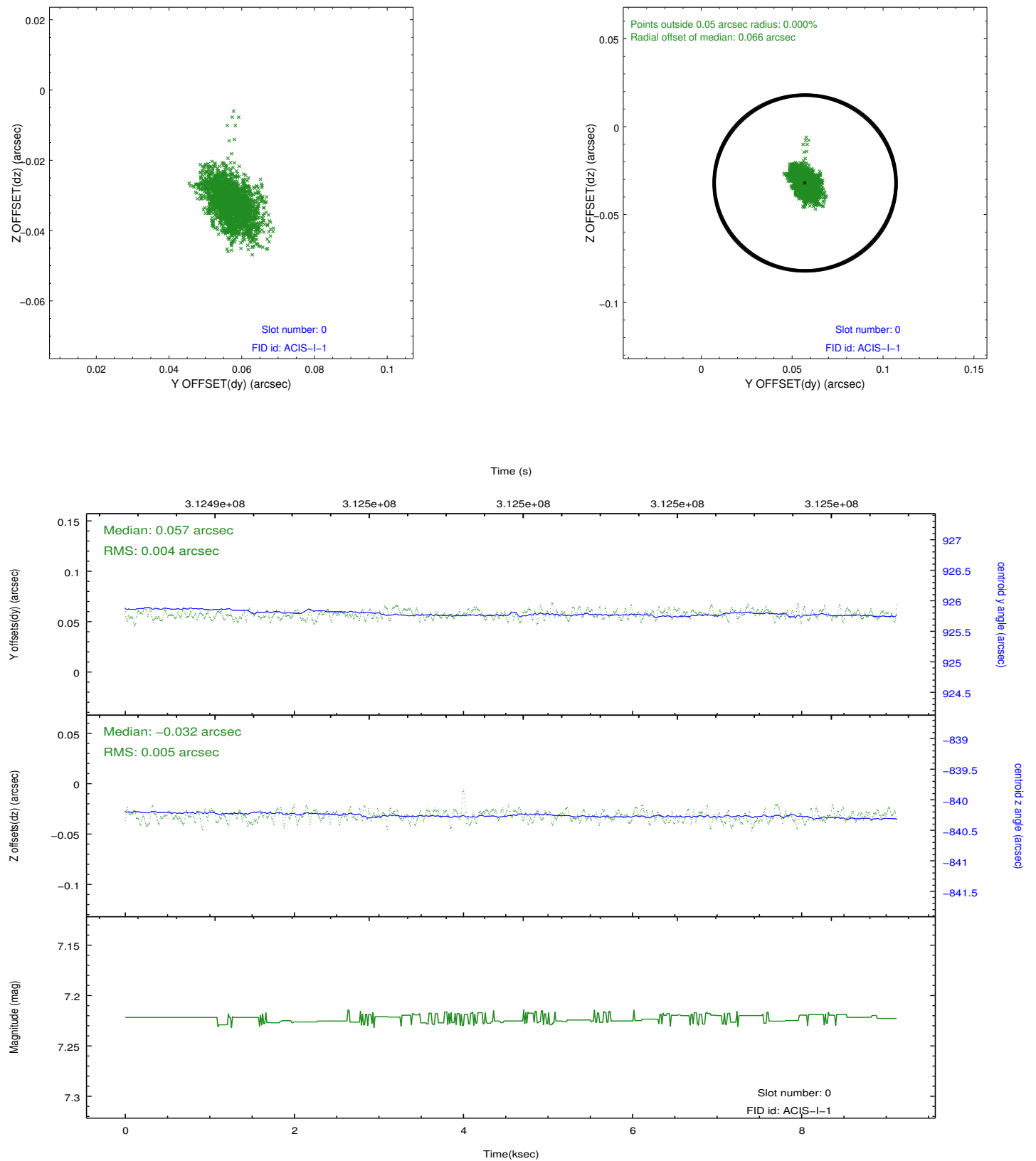


2.4.5 Slot 7

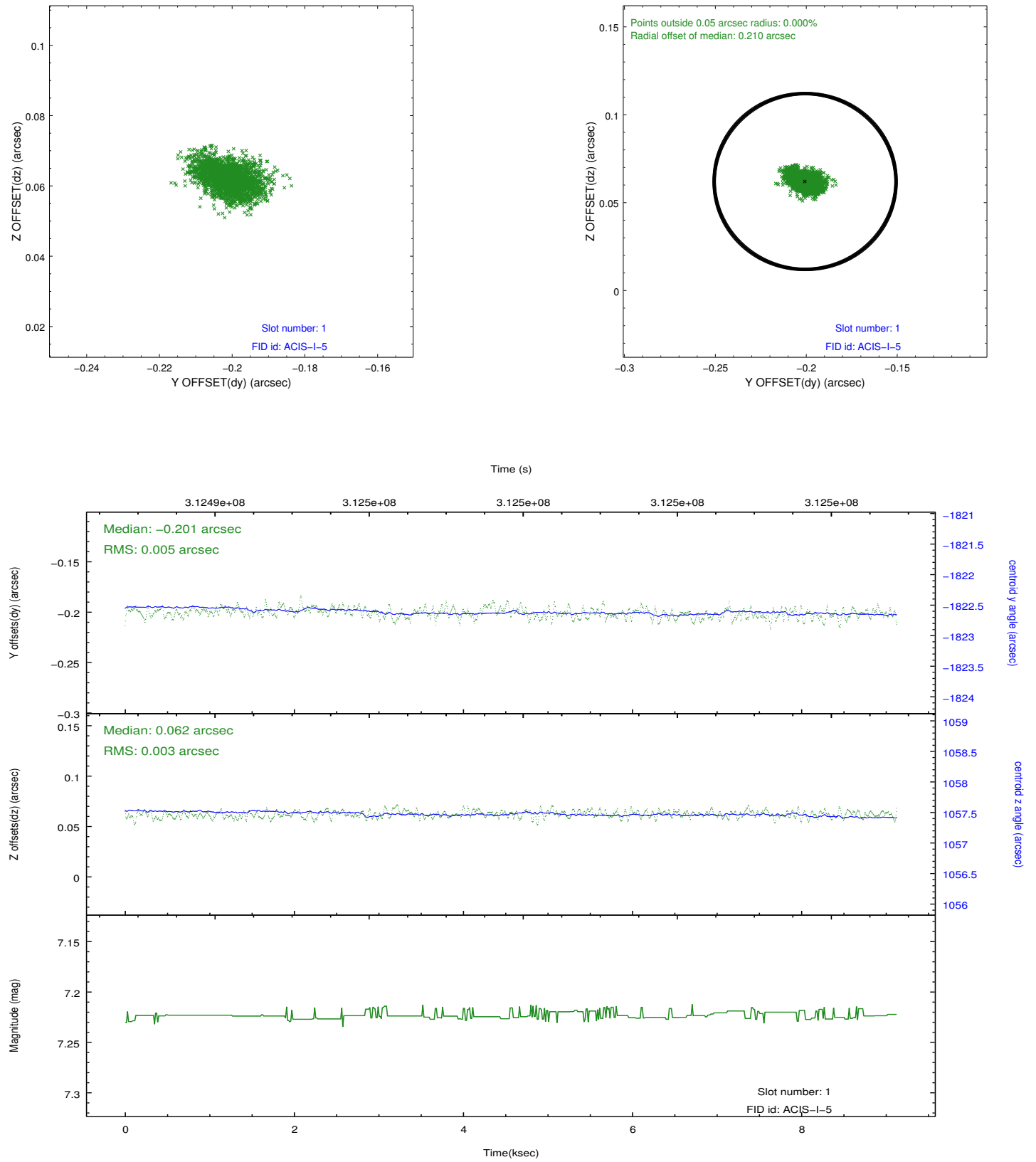


2.5 FID Slots

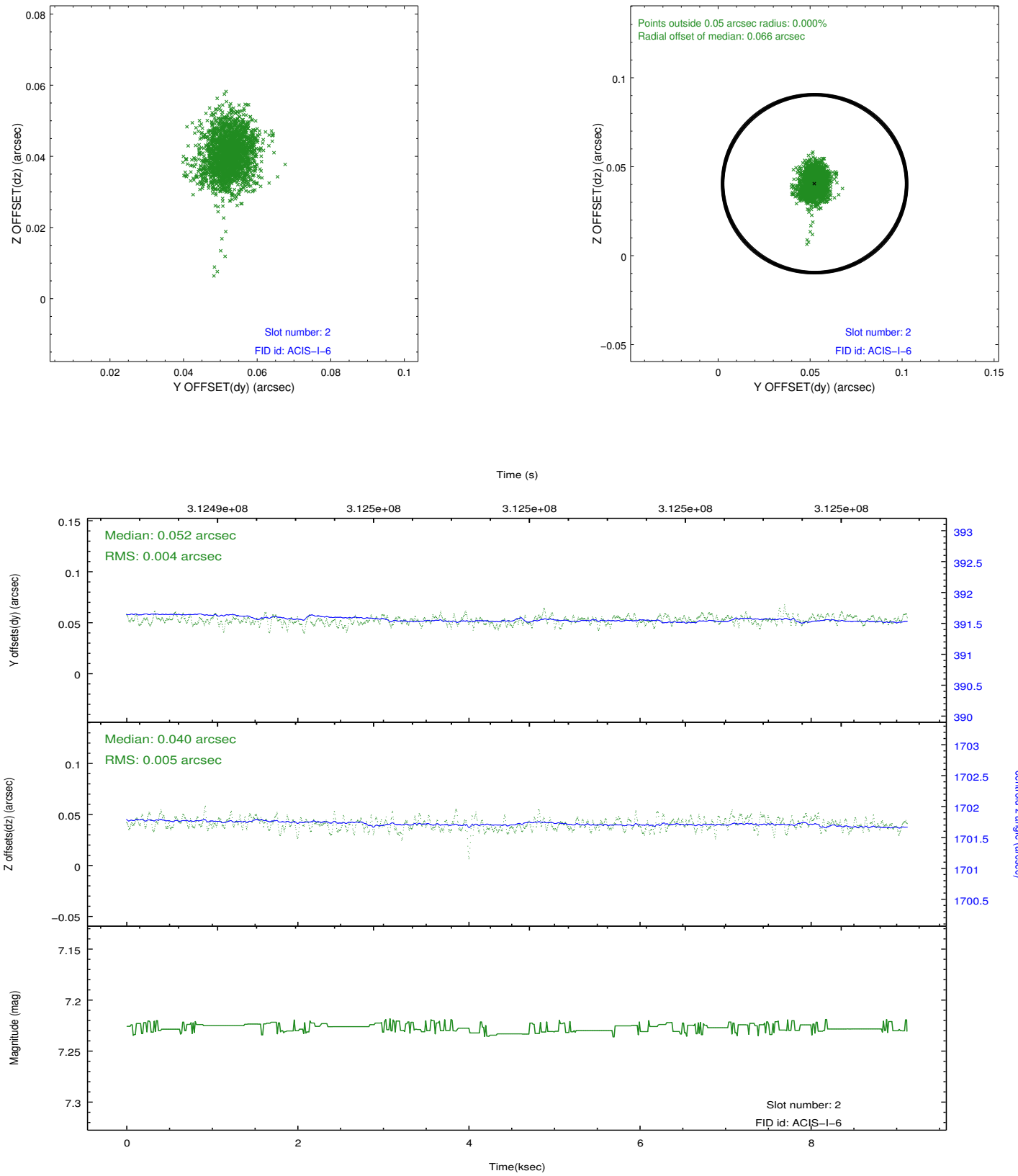
2.5.1 Slot 0



2.5.2 Slot 1



2.5.3 Slot 2



A Summary

A.1 Status

V&V Scientist	Jen Lauer
V&V Date (YYYY-MM-DD)	2012.05.07
V&V Edition	1
V&V Disposition and Status	OK
V&V Charge Time	8.71720006

A.2 Comments