

# V&V Reference Report

## L2 ASCDS Version : 8.4.4

Observation 8608 - L2 Version 2  
Chandra X-Ray Center

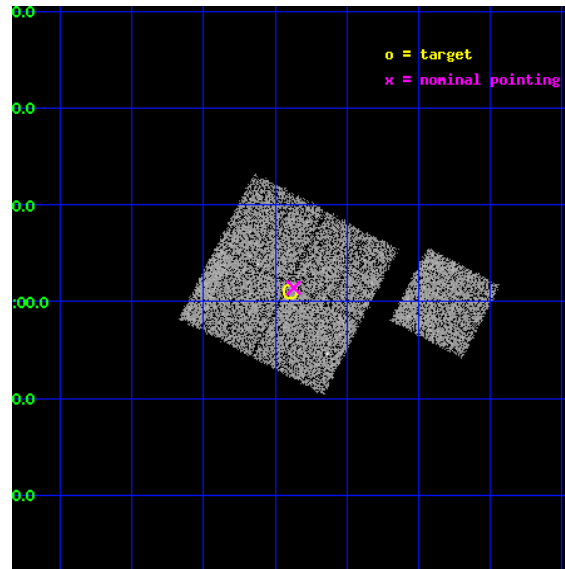
L2 Processing Date : May 19 2012

## Contents

<b>1</b>	<b>Front</b>	<b>2</b>
<b>2</b>	<b>OBI</b>	<b>3</b>
2.1	OBI . . . . .	3
2.1.1	Images . . . . .	3
2.1.2	Bias . . . . .	3
2.1.3	Parameters . . . . .	4
2.1.4	Events . . . . .	4
2.2	Compared Parameters . . . . .	5
2.3	Aspect . . . . .	6
2.4	Star Slots . . . . .	9
2.4.1	Slot 3 . . . . .	9
2.4.2	Slot 4 . . . . .	10
2.4.3	Slot 5 . . . . .	11
2.4.4	Slot 6 . . . . .	12
2.4.5	Slot 7 . . . . .	13
2.5	FID Slots . . . . .	14
2.5.1	Slot 0 . . . . .	14
2.5.2	Slot 1 . . . . .	15
2.5.3	Slot 2 . . . . .	16
<b>A</b>	<b>Summary</b>	<b>17</b>
A.1	Status . . . . .	17
A.2	Comments . . . . .	17

# 1 Front

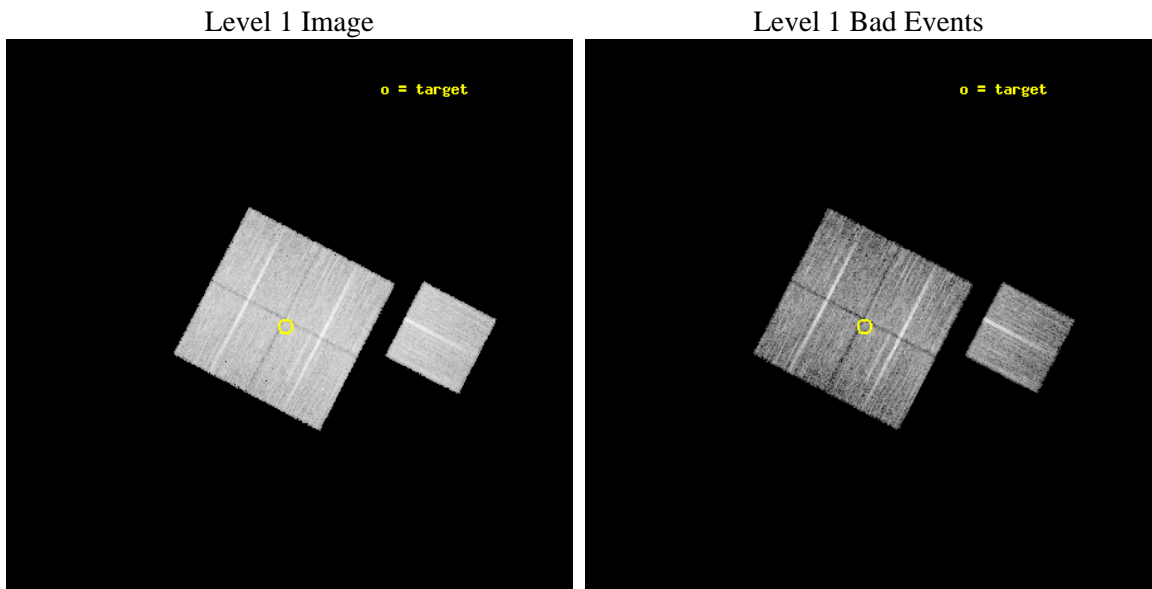
seq_num	900745	Sequence number
obs_id	8608	Observation id
title	Chandra Observations of the DEEP2 Fields	Proposal title
observer	Dr. Stephen Murray	Principal investigator
object	DEEP2 Field 3	Source name
dtcycle	0	&#160
cycle	P	events from which exps? Prim/Second/Both
ra_targ	351.72303	Observer's specified target RA [deg]
dec_targ	0.017828	Observer's specified target Dec [deg]
ra_nom	351.71728328742	Nominal RA [deg]
dec_nom	0.023524116233098	Nominal Dec [deg]
roll_nom	117.50869493687	Nominal Roll [deg]
revision	2	Processing version of data
ontime	8955.9000688791	Sum of GTIs [s]
livetime	8838.8846412415	Livetime [s]
ontime0	8952.7590586543	Sum of GTIs [s]
ontime1	8955.9000688791	Sum of GTIs [s]
ontime2	8955.9000688791	Sum of GTIs [s]
ontime3	8955.9000688791	Sum of GTIs [s]
ontime6	8949.6180583239	Sum of GTIs [s]
l2events	31044	Number of level 2 events



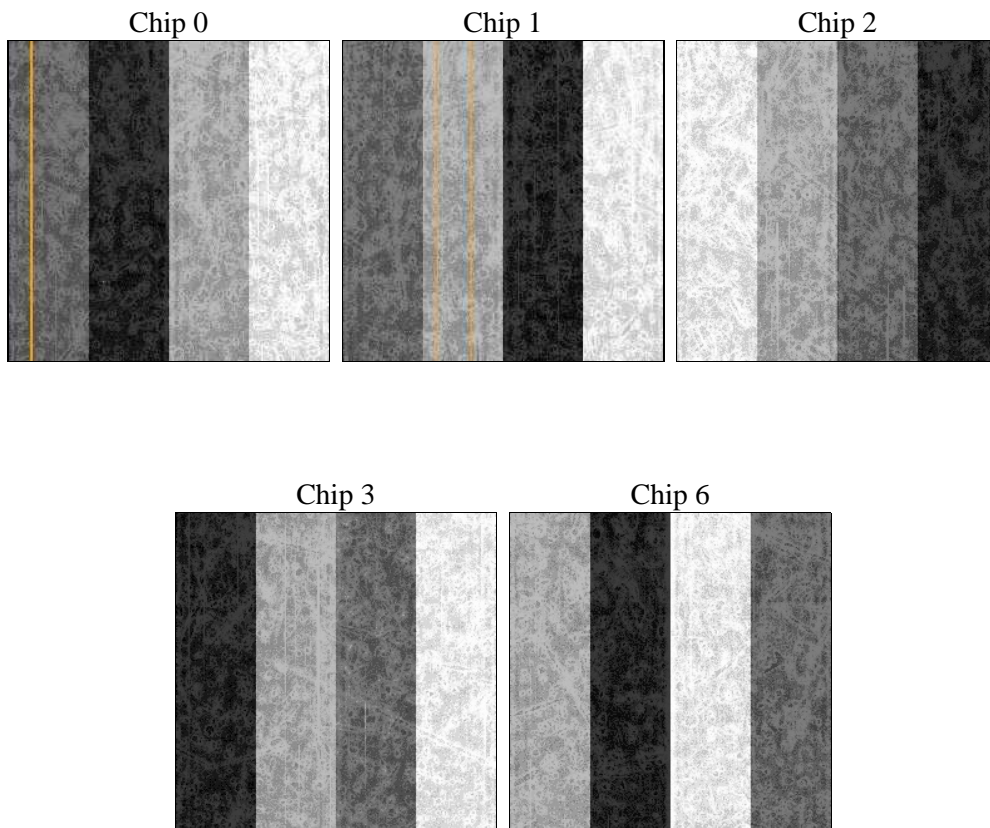
## 2 OBI

### 2.1 OBI

#### 2.1.1 Images



#### 2.1.2 Bias



### 2.1.3 Parameters

obi_num	0	Obi number	sched_exp_time	8771.000000	[s] Scheduled observation exposure time
ascdsver	8.4.4	Processing system revision	ontime	8955.9000688791	Sum of GTIs [s]
caldsver	4.4.9	&#160	ontime0	8952.7590586543	Sum of GTIs [s]
date	2012-05-19T01:57:18	Date and time of file creation	ontime1	8955.9000688791	Sum of GTIs [s]
revision	2	Processing version of data	ontime2	8955.9000688791	Sum of GTIs [s]
			ontime3	8955.9000688791	Sum of GTIs [s]
			ontime6	8949.6180583239	Sum of GTIs [s]
			l1events	383106	Number of level 1 events

### 2.1.4 Events

	ccd 0	ccd 1	ccd 2	ccd 3	ccd 6
level 1 events	71384	73962	83380	75079	79301
rejected events	64063	65681	76307	67953	71715
rejected %	89%	88%	91%	90%	90%

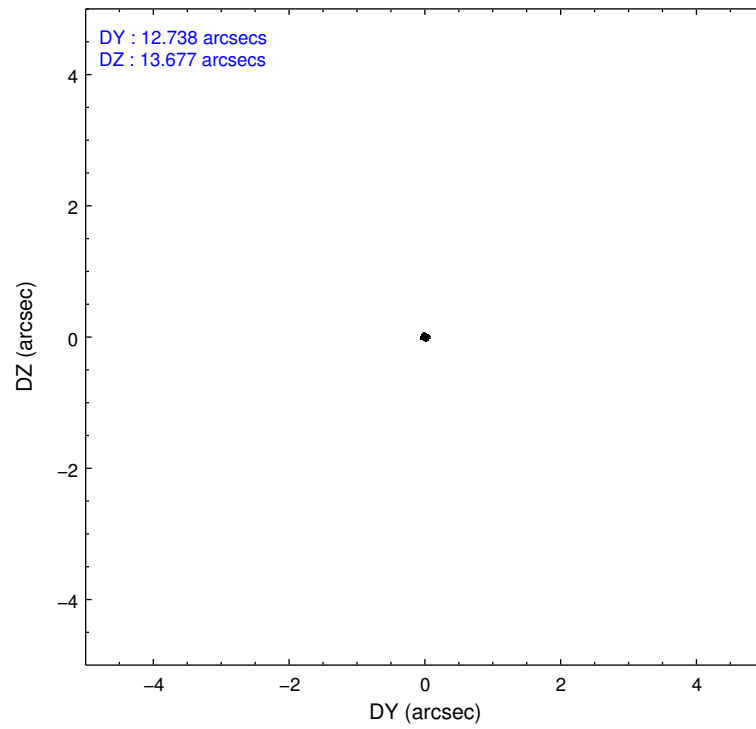
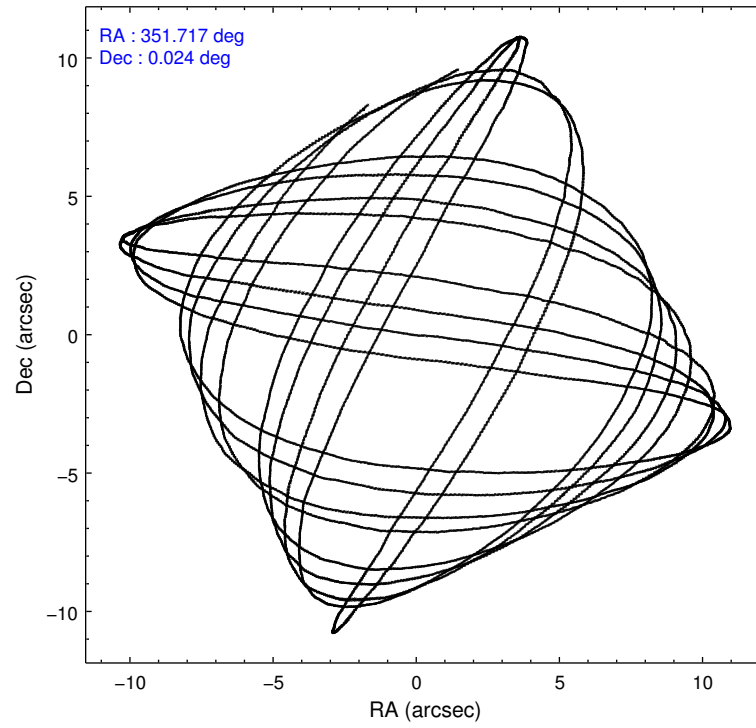
	ccd 0	ccd 1	ccd 2	ccd 3	ccd 6
grade 0 events	2563	3043	2622	2631	2692
	3%	4%	3%	3%	3%
grade 1 events	53	39	53	37	28
	0%	0%	0%	0%	0%
grade 2 events	1926	1963	1818	1602	1785
	2%	2%	2%	2%	2%
grade 3 events	848	954	762	852	850
	1%	1%	0%	1%	1%
grade 4 events	786	868	760	799	844
	1%	1%	0%	1%	1%
grade 5 events	2724	2963	2635	3082	3156
	3%	4%	3%	4%	3%
grade 6 events	1471	1745	1398	1502	1704
	2%	2%	1%	2%	2%
grade 7 events	61013	62387	73332	64574	68242
	85%	84%	87%	86%	86%

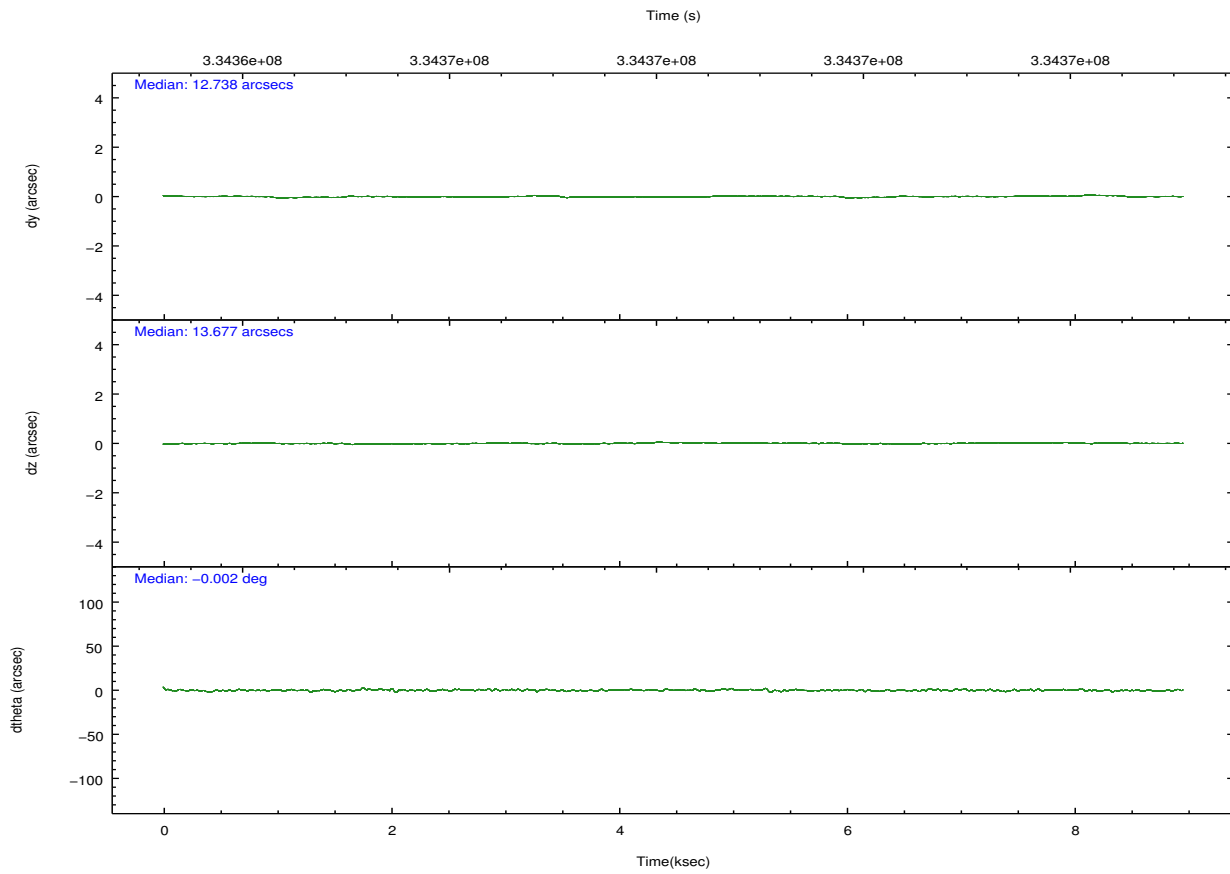
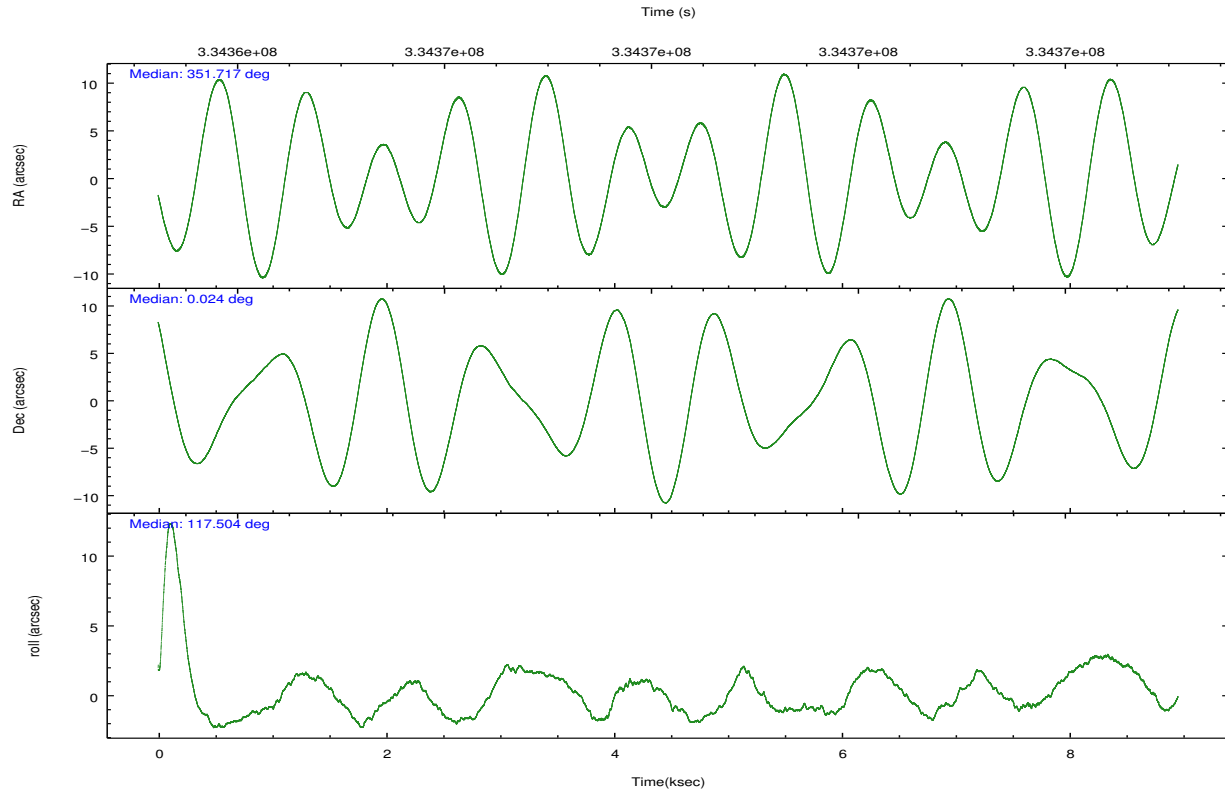


## 2.2 Compared Parameters

Parameter	Planned	Actual	Parameter	Planned	Actual
Instrument	ACIS	ACIS	Obspar format version number	7	7
Detector	ACIS-01236	ACIS-01236	Obspar file type	PREDICTED	ACTUAL
Grating	NONE	NONE	Obspar update status	NONE	UPDATED
Data mode	VFAINT	VFAINT	CCD I0 on	Y	Y
Observation mode	POINTING	POINTING	CCD I1 on	Y	Y
[deg] Pointing RA	351.740583	351.7172832874212	CCD I2 on	Y	Y
[deg] Pointing Dec	0.008886	0.02352411623309765	CCD I3 on	Y	Y
[deg] Pointing Roll	117.300003	117.5086949368684	CCD S0 on	N	N
[mm] SIM focus pos	-0.782348	-0.7809083437167272	CCD S1 on	N	N
[mm] SIM defocus	0	0.001439871863259334	CCD S2 on	O1	Y
[mm] SIM translation stage pos	-233.592463	-233.5874344608287	CCD S3 on	N	N
[mm] SIM translation stage offset	0	-0.005018542100998502	CCD S4 on	N	N
[s] Observation start time (MET)	334363855.184000	334363479.37019	CCD S5 on	N	N
Observation start date	2008-08-05T22:49:50	2008-08-05T22:44:39	Number of optional ACIS chips dropped	0	0
[s] Observation end time (MET)	334372626.184000	334372779.70815	On-chip summing requested	N	N
Observation end date	2008-08-06T01:16:01	2008-08-06T01:19:39	Subarray requested	NONE	NONE
Read mode	TIMED	TIMED	Alternating exposures requested	N	N
			[s] Primary exposure time	0.000000	3.1

## 2.3 Aspect



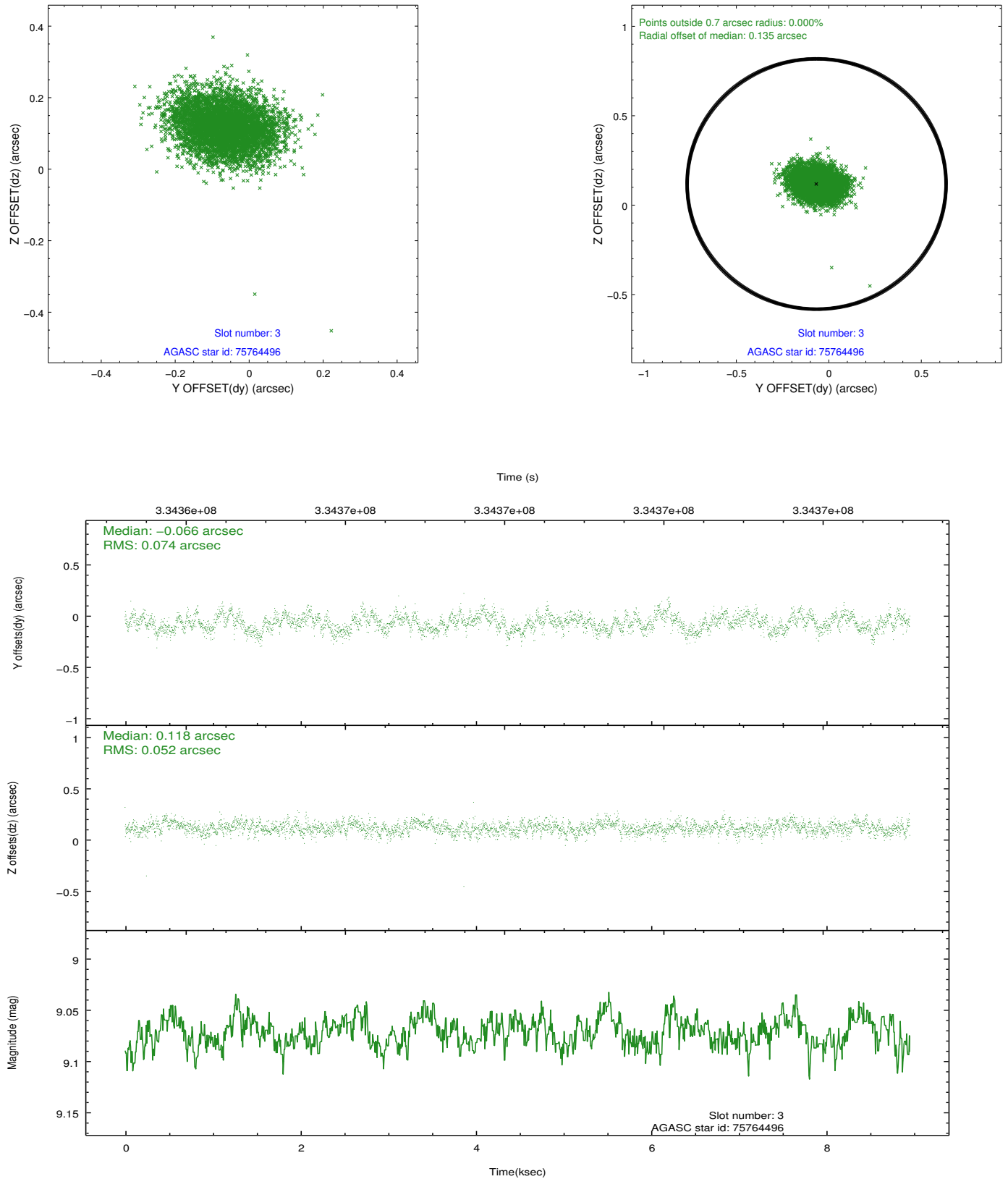


### Slot Statistics

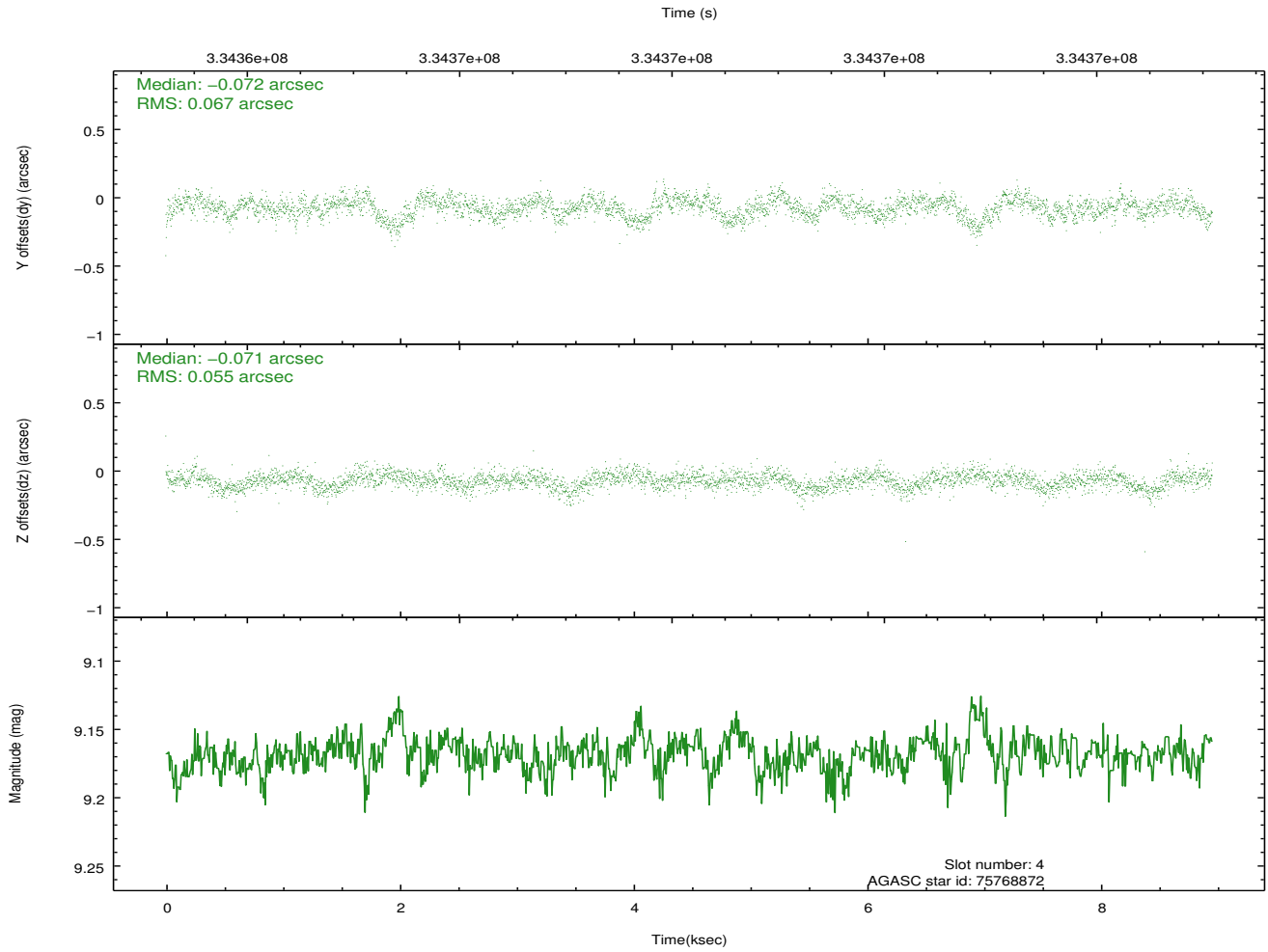
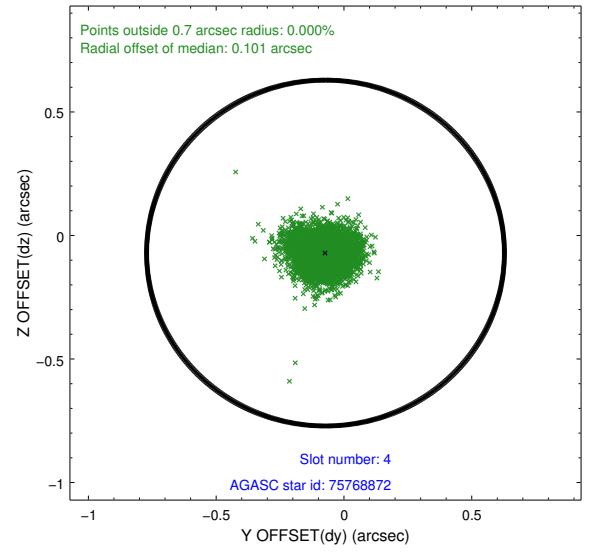
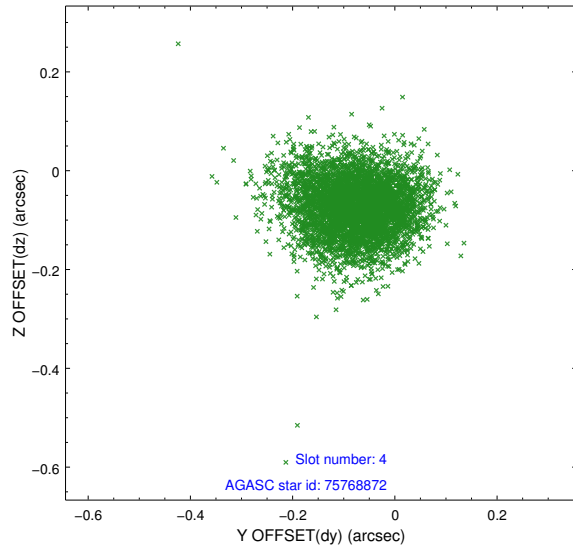
slot	status	id	mag	n_pts	med_dy	med_dz	dr1	dr2	ra	dec	mean_y	mean_z
0	FID	ACIS-I-2	6.99	2184	-0.071	-0.041	0.012	0.032	0.000000	0.000000	-767.46	-843.65
1	FID	ACIS-I-4	7.00	2185	0.183	0.056	0.008	0.015	0.000000	0.000000	2146.58	1062.31
2	FID	ACIS-I-5	7.05	2185	-0.213	0.054	0.011	0.023	0.000000	0.000000	-1820.64	1060.87
3	GUIDE	75764496	9.07	4366	-0.066	0.118	0.095	0.155	351.852841	0.722290	2097.24	-1536.74
4	GUIDE	75768872	9.17	4369	-0.072	-0.071	0.091	0.150	350.987165	0.298741	2171.54	1931.24
5	GUIDE	75769104	8.66	4369	-0.079	-0.023	0.080	0.126	351.845083	0.370778	985.86	-931.14
6	GUIDE	687346848	8.78	4362	0.122	-0.186	0.085	0.131	351.544424	-0.463235	-1185.86	1406.52
7	GUIDE	688265896	9.17	4363	0.097	0.157	0.109	0.173	352.587516	-0.177872	-1995.74	-2400.83

## 2.4 Star Slots

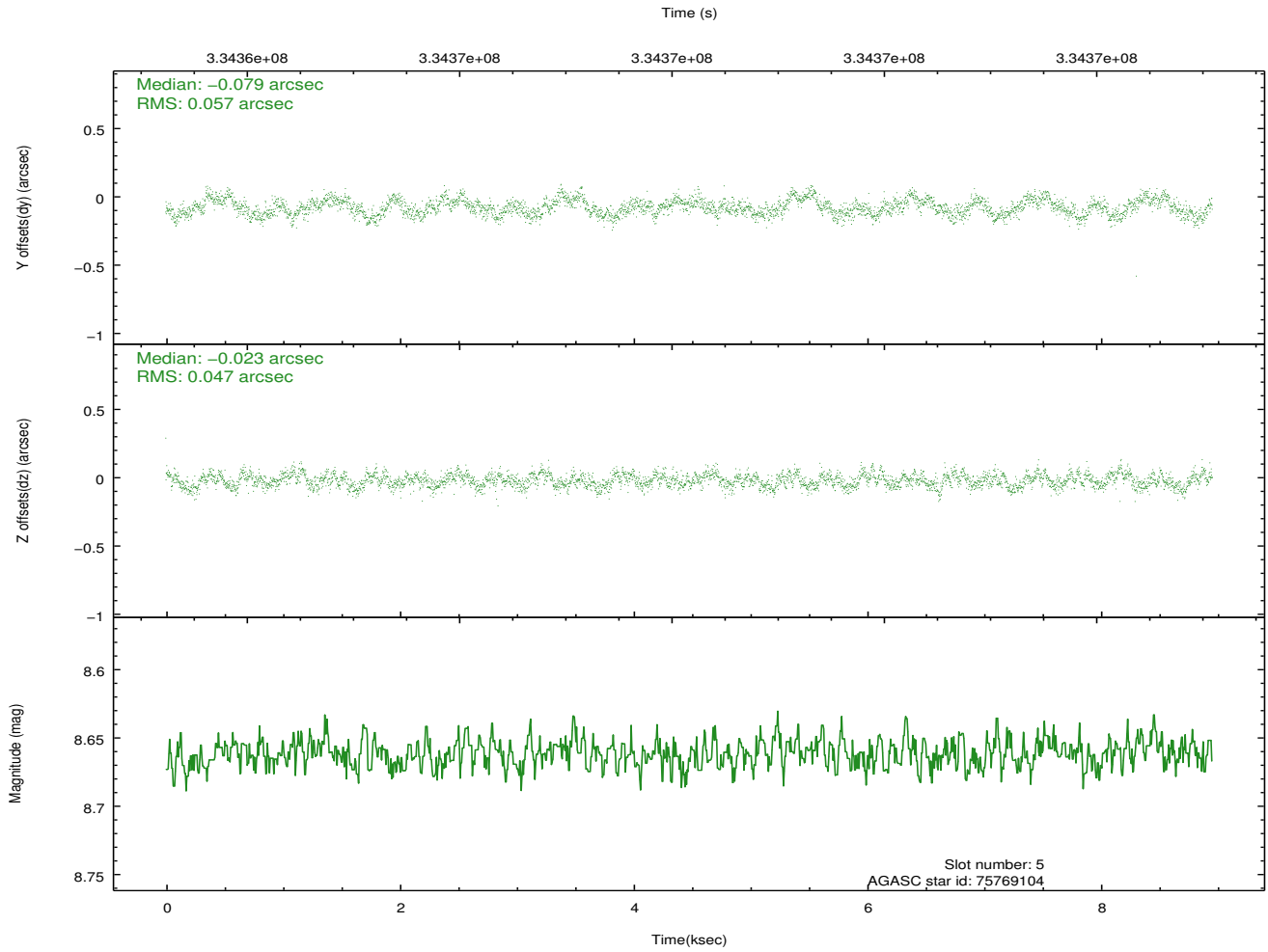
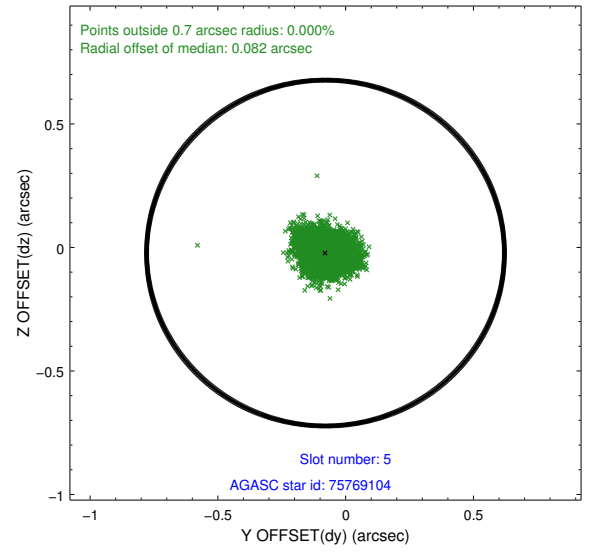
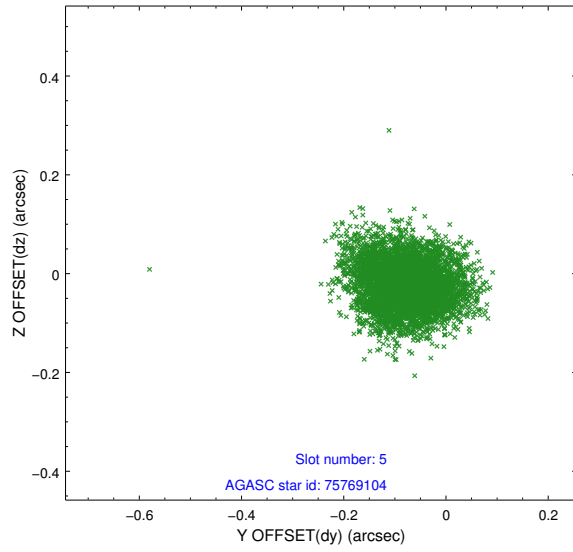
### 2.4.1 Slot 3



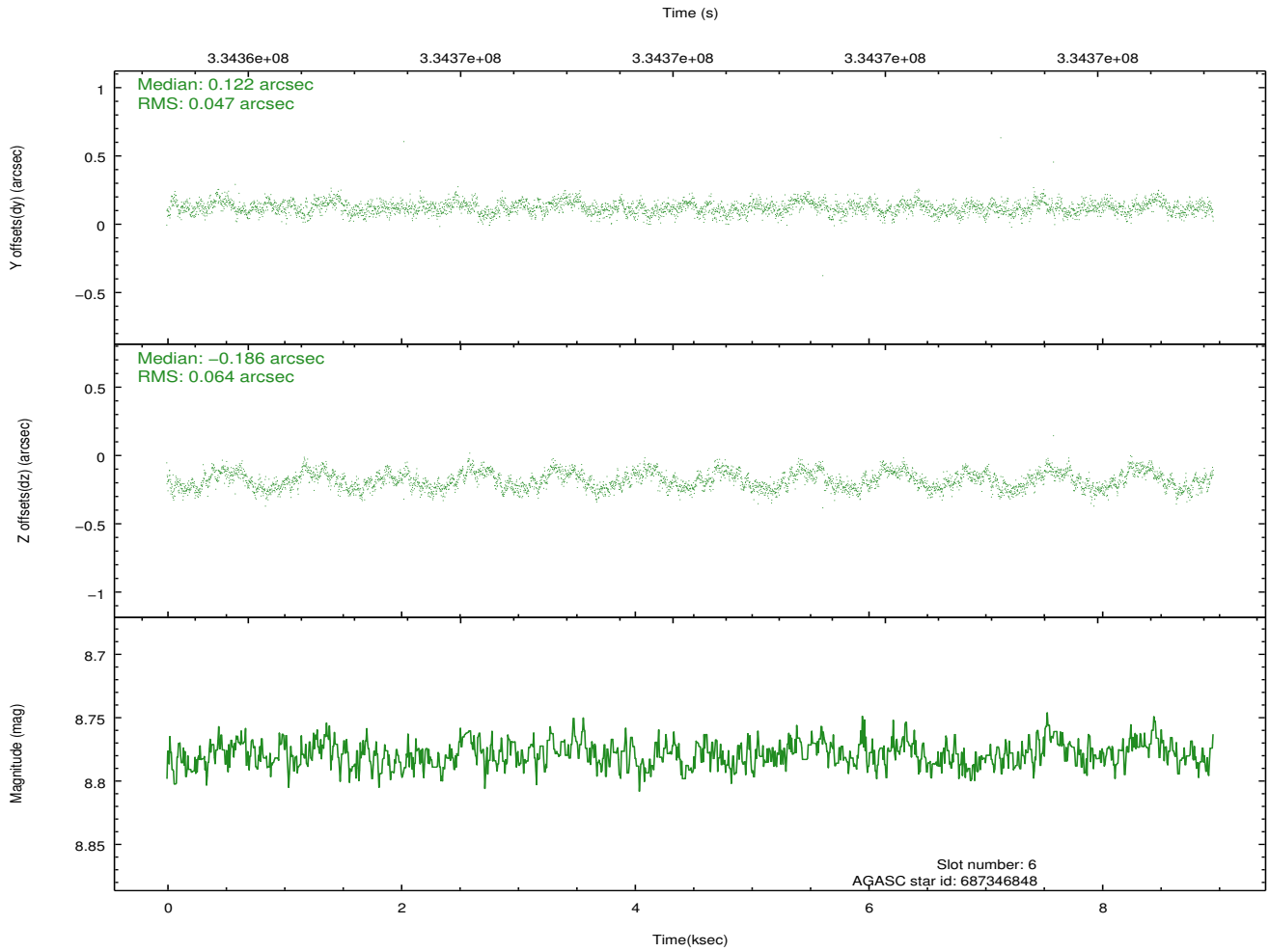
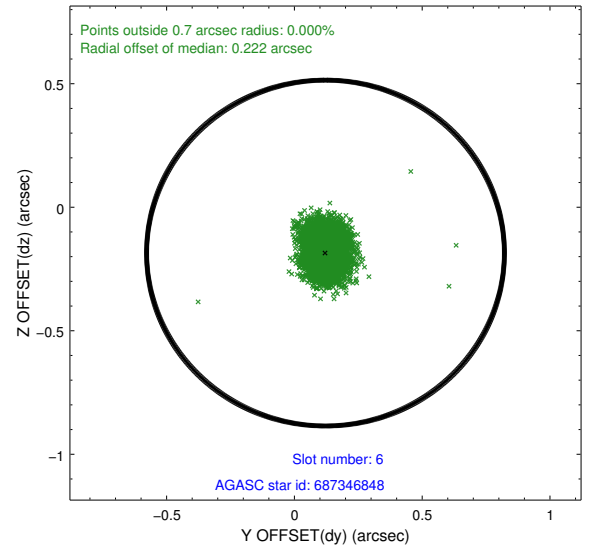
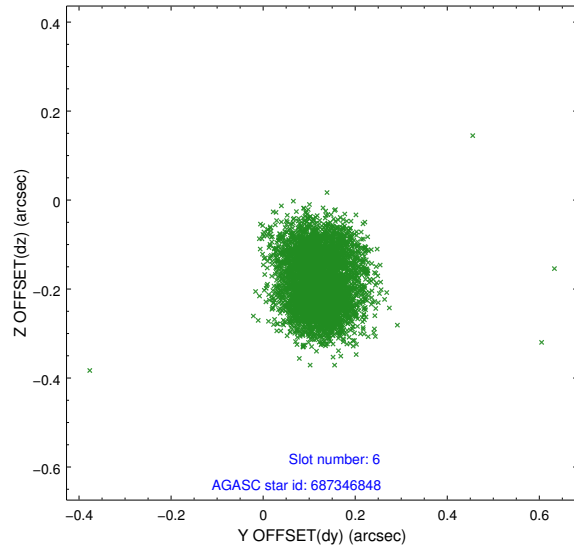
## 2.4.2 Slot 4



### 2.4.3 Slot 5

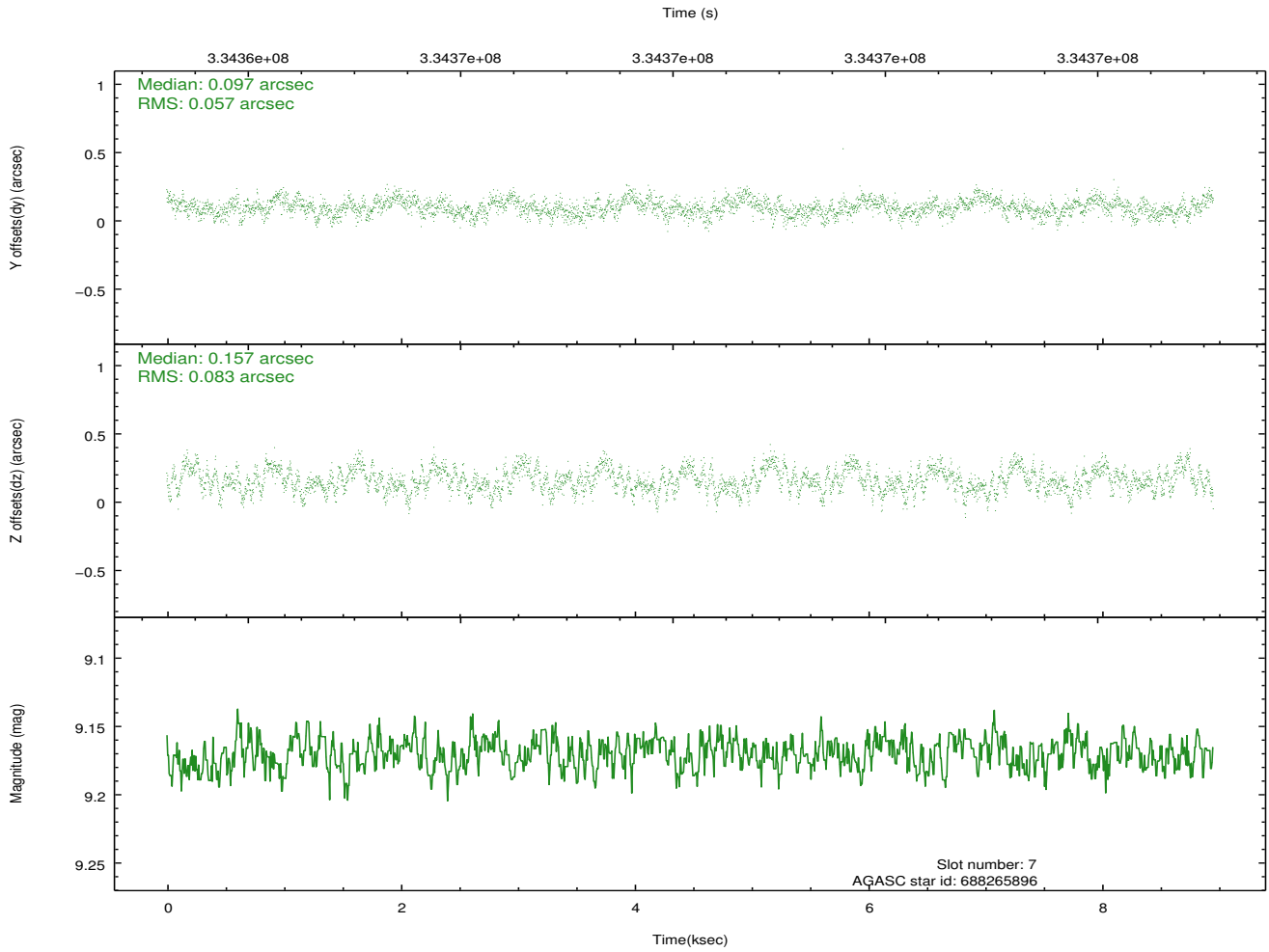
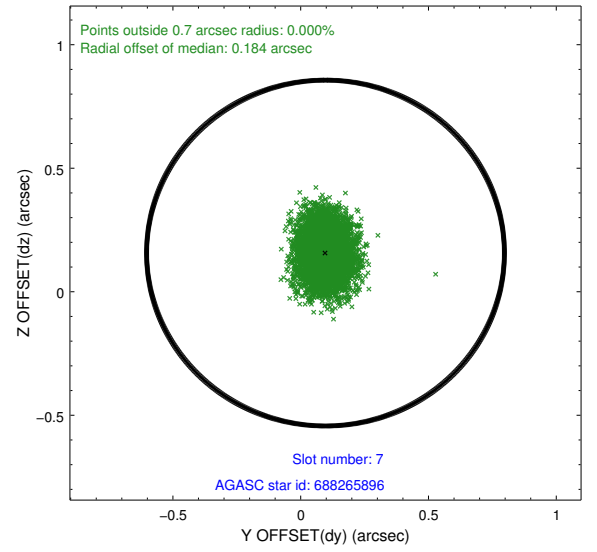
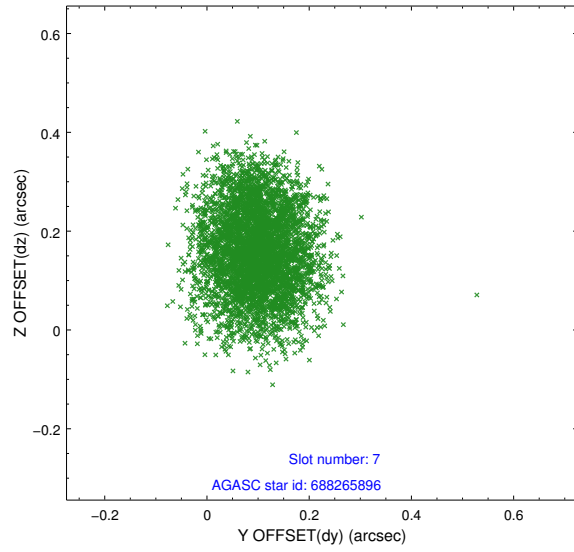


## 2.4.4 Slot 6



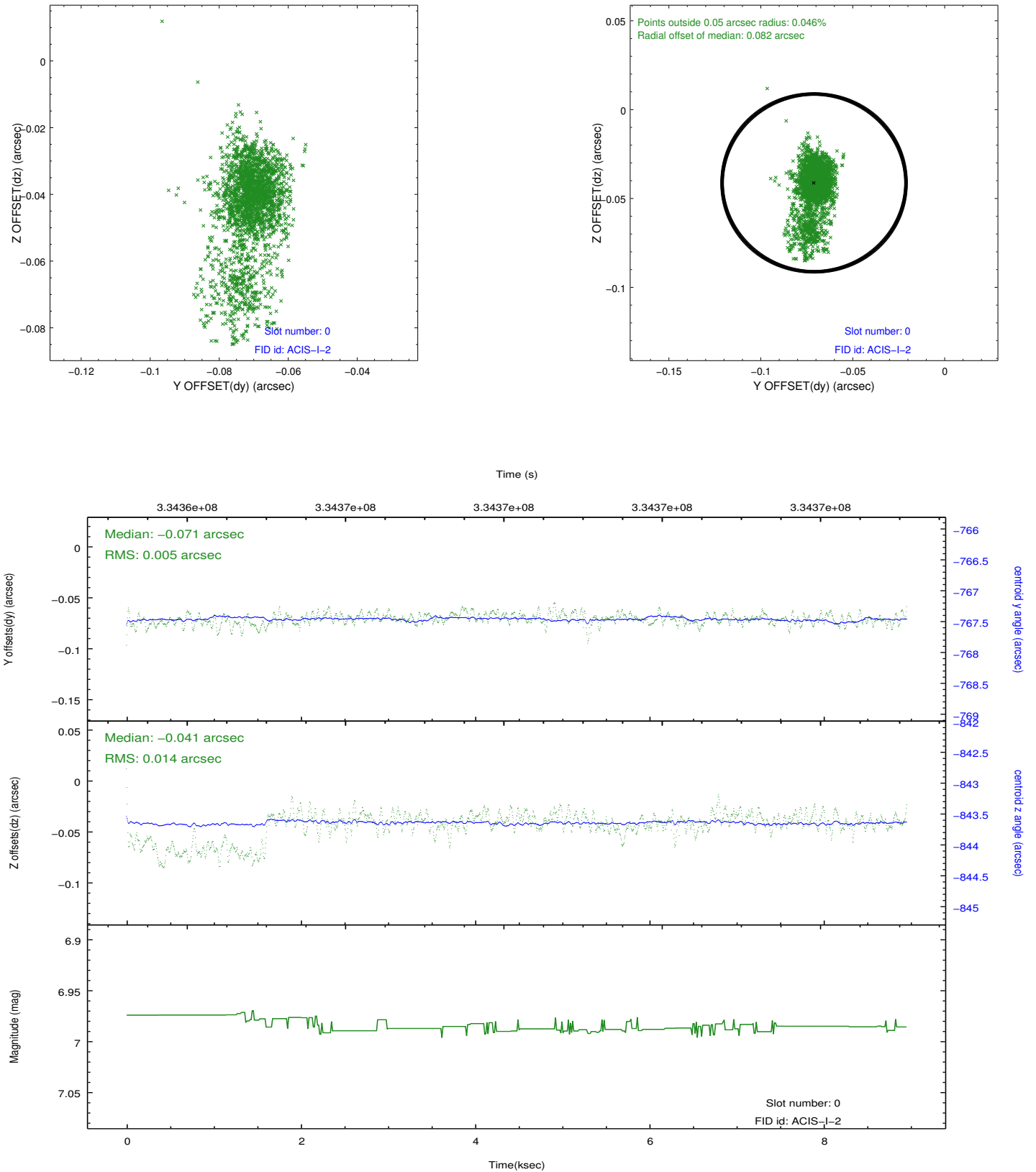


## 2.4.5 Slot 7

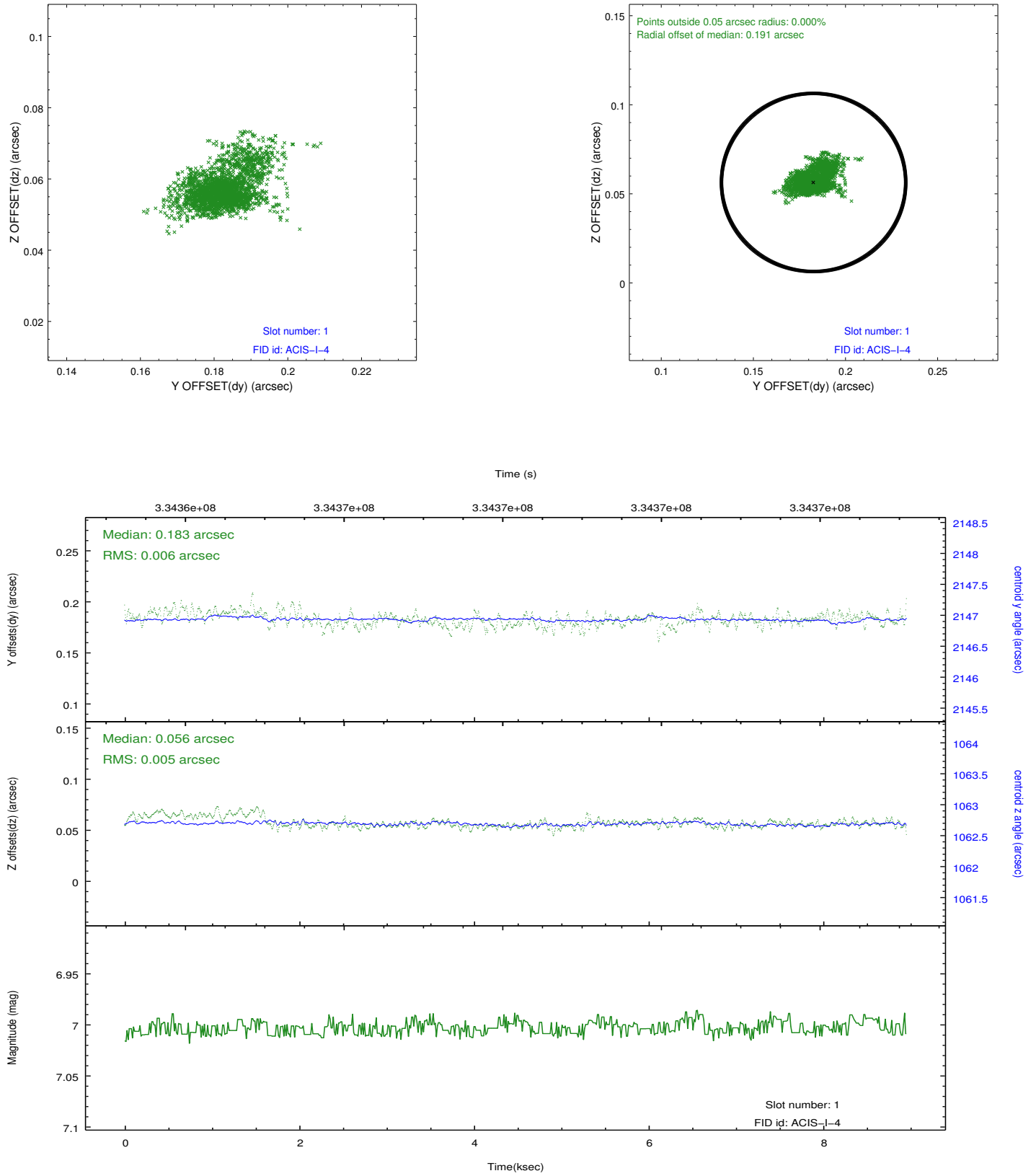


## 2.5 FID Slots

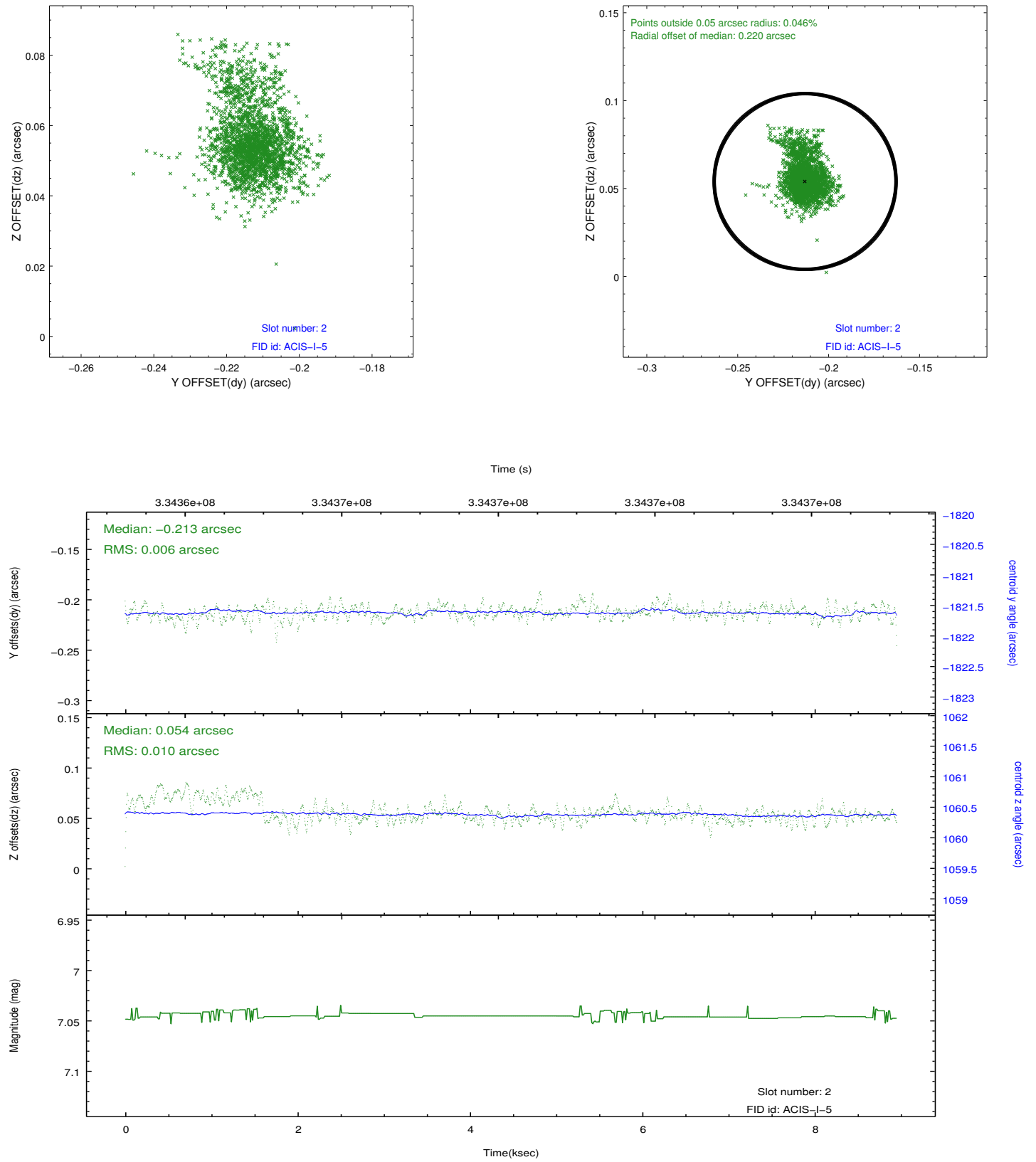
### 2.5.1 Slot 0



## 2.5.2 Slot 1



### 2.5.3 Slot 2



## A Summary

### A.1 Status

V&V Scientist	Beth Sundheim
V&V Date (YYYY-MM-DD)	2012.05.27
V&V Edition	1
V&V Disposition and Status	OK
V&V Charge Time	8.95590006

### A.2 Comments