

V&V Reference Report

L2 ASCDS Version : 8.4.5

Observation 858 - L2 Version 4
Chandra X-Ray Center

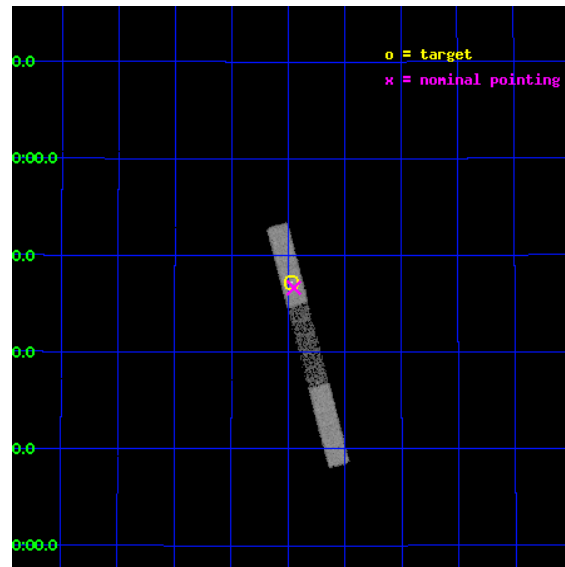
L2 Processing Date : Aug 25 2012

Contents

1	Front	2
2	OBI	3
2.1	OBI	3
2.1.1	Images	3
2.1.2	Bias	3
2.1.3	Parameters	4
2.1.4	Events	4
2.2	Compared Parameters	5
2.3	Aspect	6
2.4	Star Slots	9
2.4.1	Slot 3	9
2.4.2	Slot 4	10
2.4.3	Slot 5	11
2.4.4	Slot 6	12
2.4.5	Slot 7	13
2.5	FID Slots	14
2.5.1	Slot 0	14
2.5.2	Slot 1	15
2.5.3	Slot 2	16
A	Summary	17
A.1	Status	17
A.2	Comments	17

1 Front

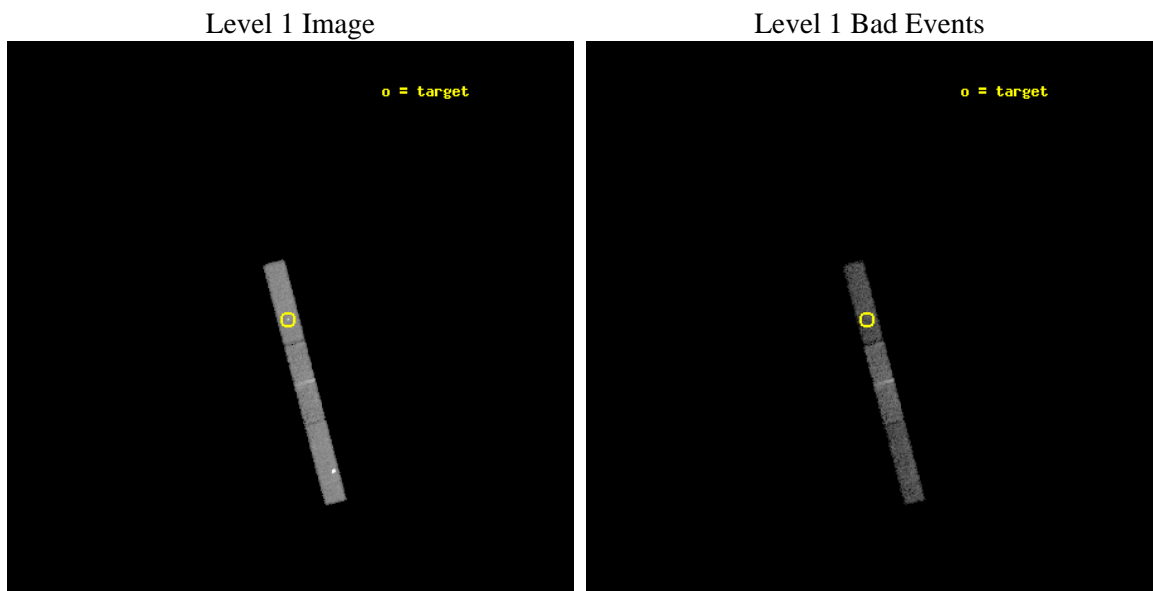
seq_num	700163	Sequence number
obs_id	858	Observation id
title	HUNTING THE AGN CORES IN FR1 RADIO GALAXIES	Proposal title
observer	Prof Diana Worrall	Principal investigator
object	B2 0755+37	Source name
dtcycle	0	
cycle	P	events from which exps? Prim/Second/Both
ra_targ	119.6175	Observer's specified target RA [deg]
dec_targ	37.786667	Observer's specified target Dec [deg]
ra_nom	119.61208105603	Nominal RA [deg]
dec_nom	37.777523018921	Nominal Dec [deg]
roll_nom	255.2674036831	Nominal Roll [deg]
revision	4	Processing version of data
ontime	8261.1000547111	Sum of GTIs [s]
livetime	7900.8225465867	Livetime [s]
ontime5	8261.1000547111	Sum of GTIs [s]
ontime6	8261.1000547111	Sum of GTIs [s]
ontime7	8261.1000547111	Sum of GTIs [s]
l2events	25484	Number of level 2 events



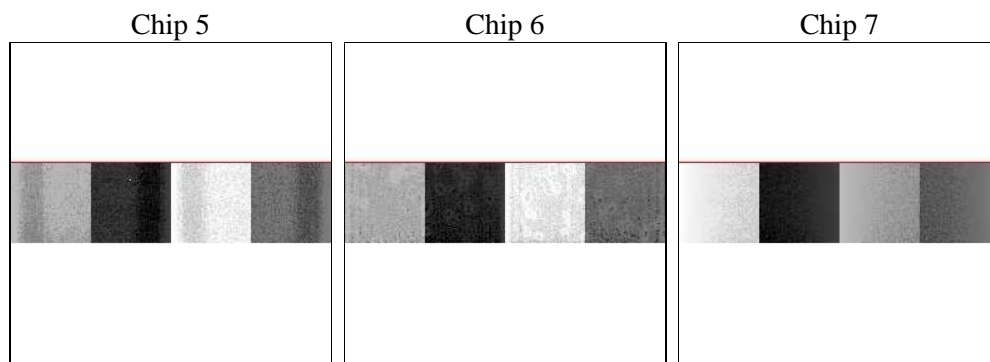
2 OBI

2.1 OBI

2.1.1 Images



2.1.2 Bias



2.1.3 Parameters

obi_num	2	Obi number	sched_exp_time	7800.000000	[s] Scheduled observation exposure time
ascdsver	8.4.5	Processing system revision	ontime	8261.1000547111	Sum of GTIs [s]
caldsver	4.5.1.1	 	ontime5	8261.1000547111	Sum of GTIs [s]
date	2012-08-25T03:11:43	Date and time of file creation	ontime6	8261.1000547111	Sum of GTIs [s]
revision	4	Processing version of data	ontime7	8261.1000547111	Sum of GTIs [s]
			l1events	80934	Number of level 1 events

2.1.4 Events

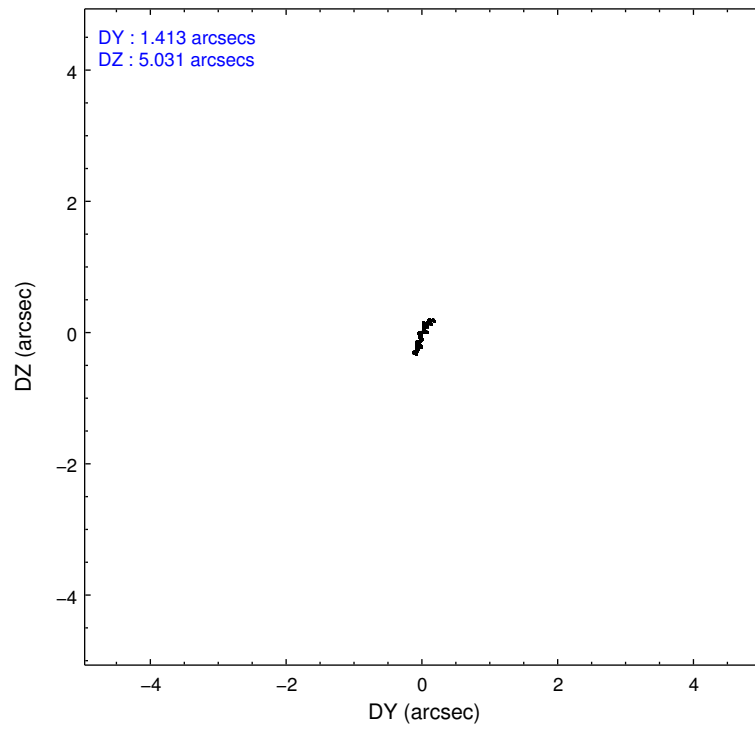
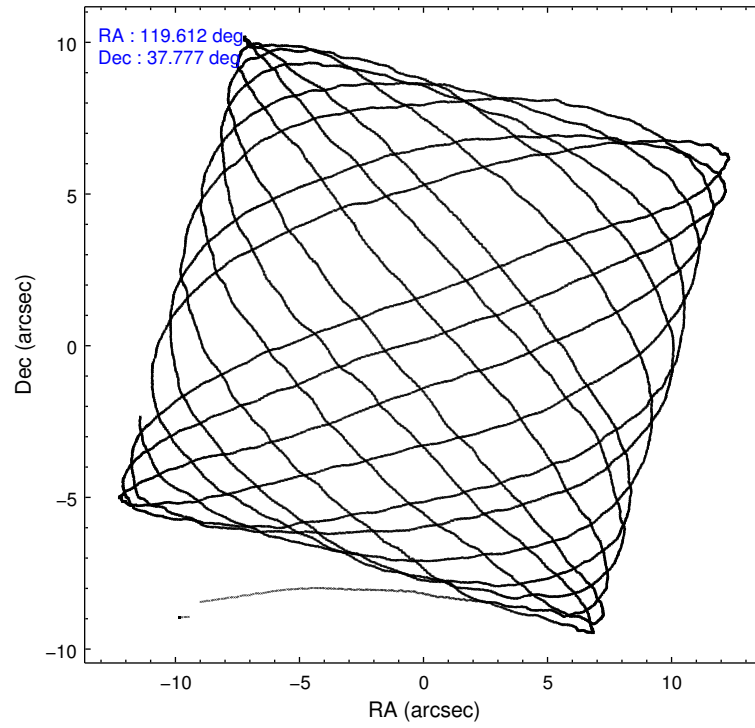
	ccd 5	ccd 6	ccd 7
level 1 events	33502	22610	24822
rejected events	13166	20557	12267
rejected %	39%	90%	49%

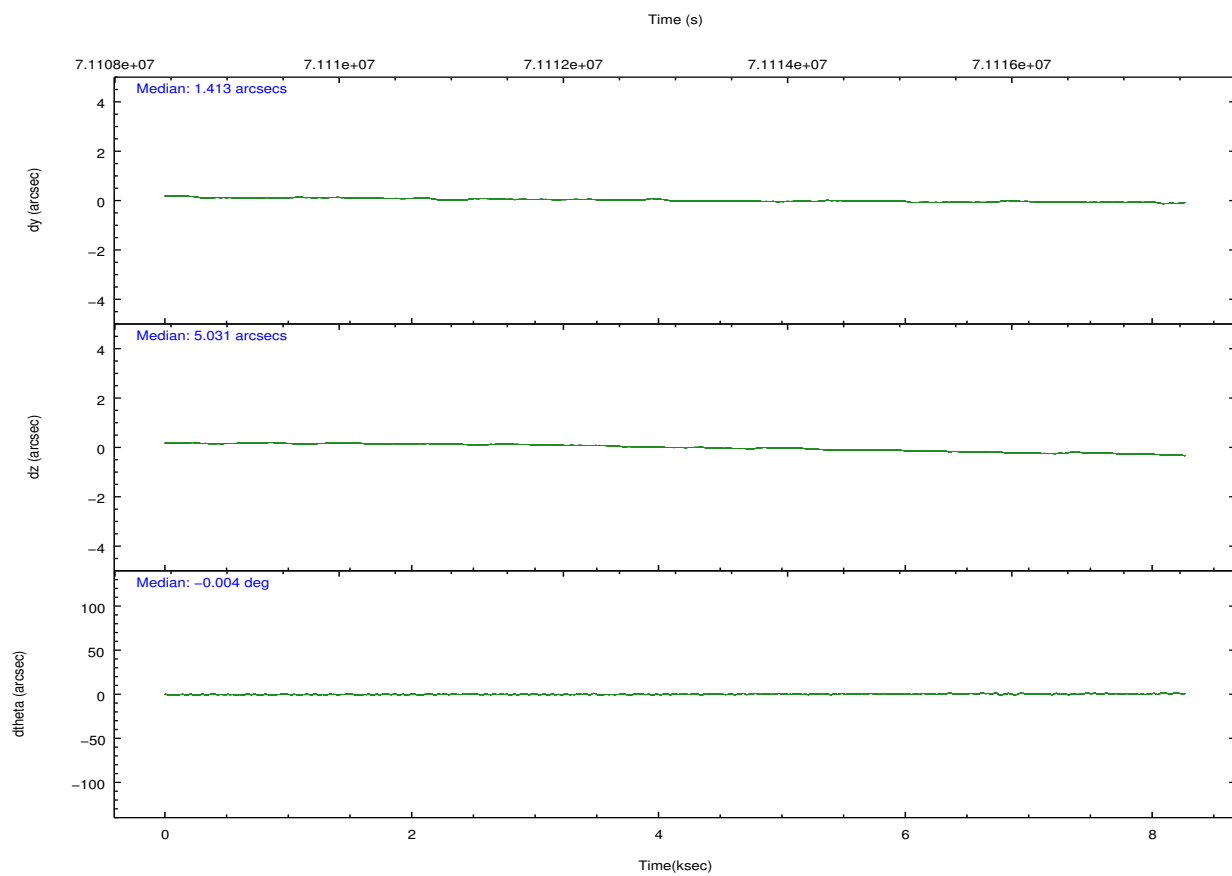
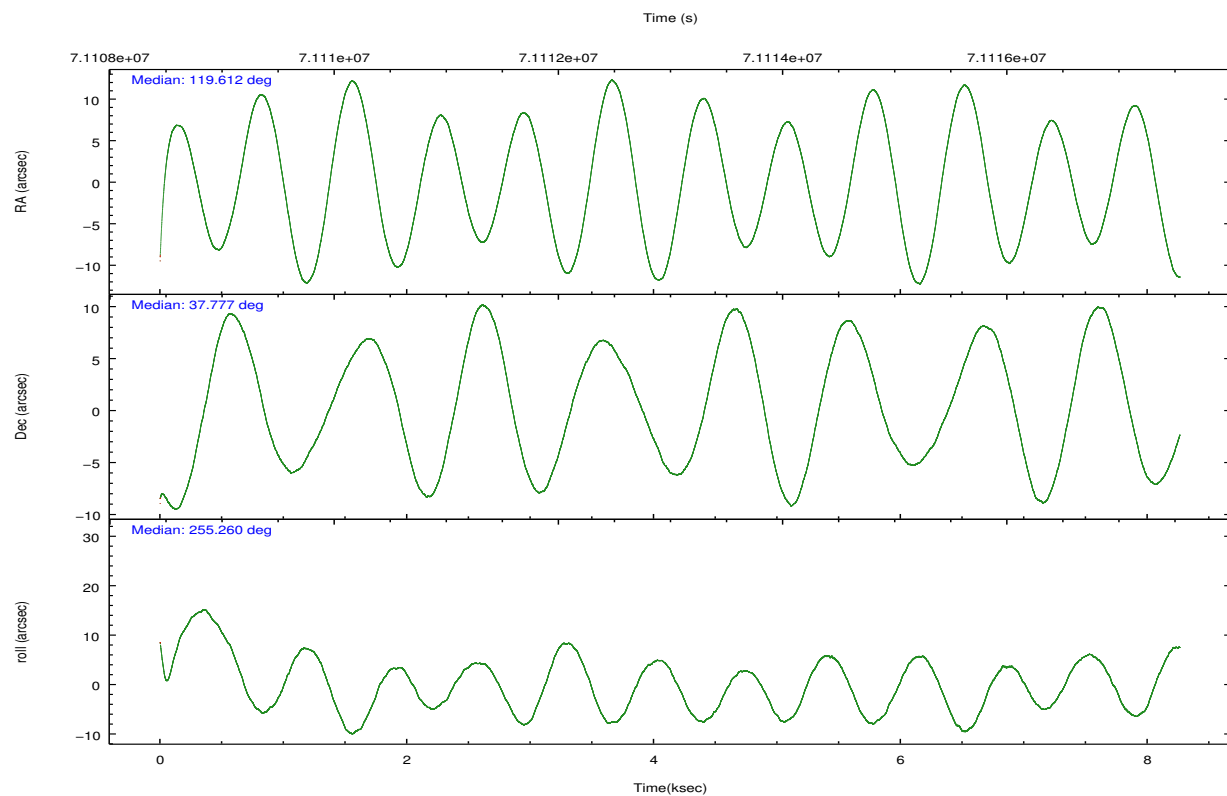
	ccd 5	ccd 6	ccd 7
grade 0 events	10365	852	1902
	30%	3%	7%
grade 1 events	70	6	26
	0%	0%	0%
grade 2 events	3927	354	2833
	11%	1%	11%
grade 3 events	1069	356	1521
	3%	1%	6%
grade 4 events	879	336	1444
	2%	1%	5%
grade 5 events	1792	587	1935
	5%	2%	7%
grade 6 events	6025	339	6176
	17%	1%	24%
grade 7 events	9375	19780	8985
	27%	87%	36%

2.2 Compared Parameters

Parameter	Planned	Actual	Parameter	Planned	Actual
Instrument	ACIS	ACIS	Obspar format version number	7	7
Detector	ACIS-567	ACIS-567	Obspar file type	PREDICTED	ACTUAL
Grating	NONE	NONE	Obspar update status	NONE	UPDATED
Data mode	VFAINT	VFAINT	Number of optional ACIS chips dropped	0	0
Observation mode	POINTING	POINTING	On-chip summing requested	N	N
[deg] Pointing RA	119.602842	119.6120810560316	Subarray requested	CUSTOM	1/4
[deg] Pointing Dec	37.804062	37.77752301892082	Subarray start row	385	385
[deg] Pointing Roll	255.116093	255.2674036831027	Subarray row count	256	256
[mm] SIM focus pos	-0.684267	-0.6828225247311905	Alternating exposures requested	N	N
[mm] SIM defocus	0	0.001444936568705701	[s] Primary exposure time	0.000000	0.9
[mm] SIM translation stage pos	-190.132523	-190.1400660498719			
[mm] SIM translation stage offset	0	0.00754346686406393			
[s] Observation start time (MET)	71109244.184000	71108047.969671			
Observation start date	2000-04-03T00:33:00	2000-04-03T00:14:07			
[s] Observation end time (MET)	71117044.184000	71117838.25752901			
Observation end date	2000-04-03T02:43:00	2000-04-03T02:57:18			
Read mode	TIMED	TIMED			

2.3 Aspect



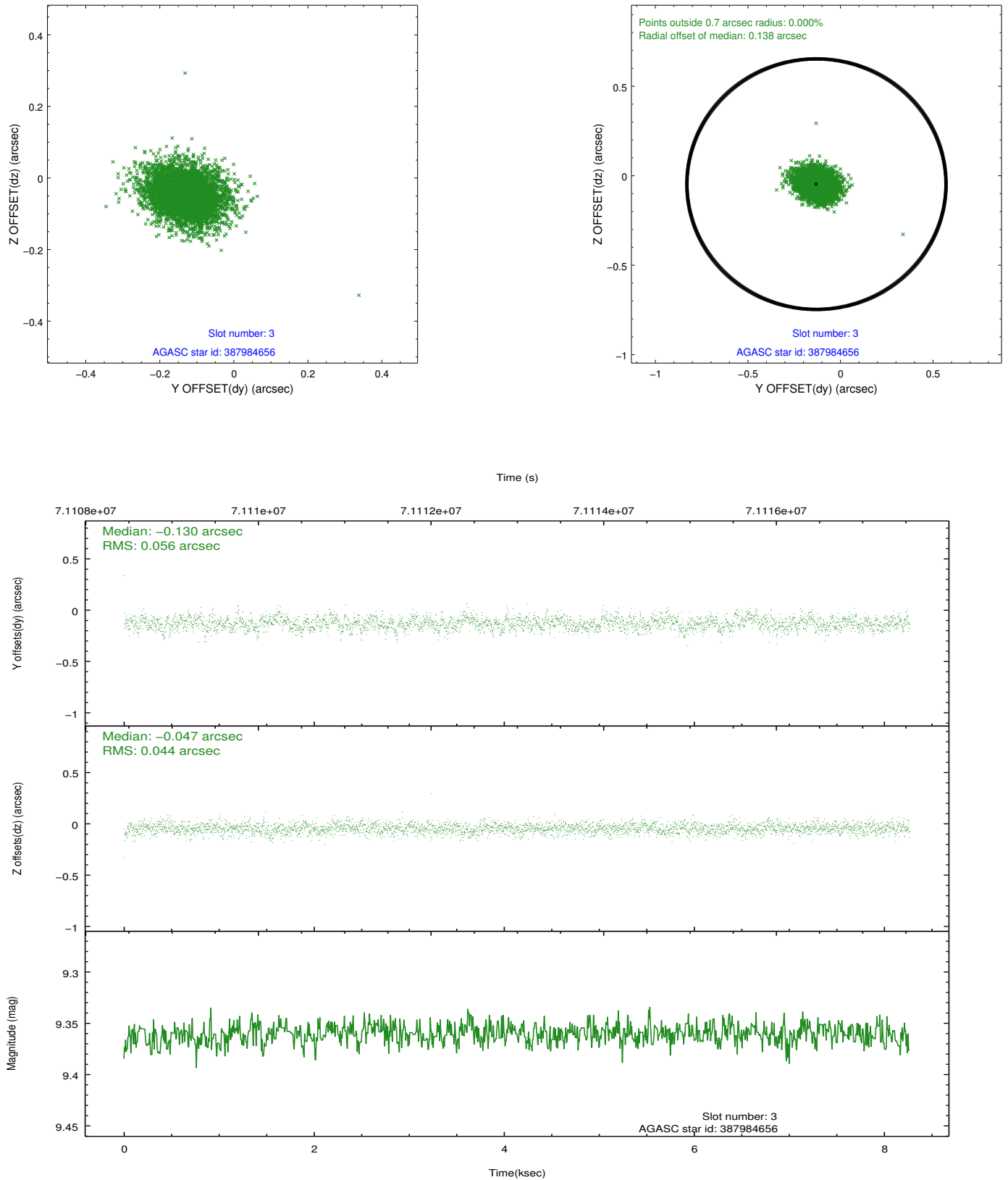


Slot Statistics

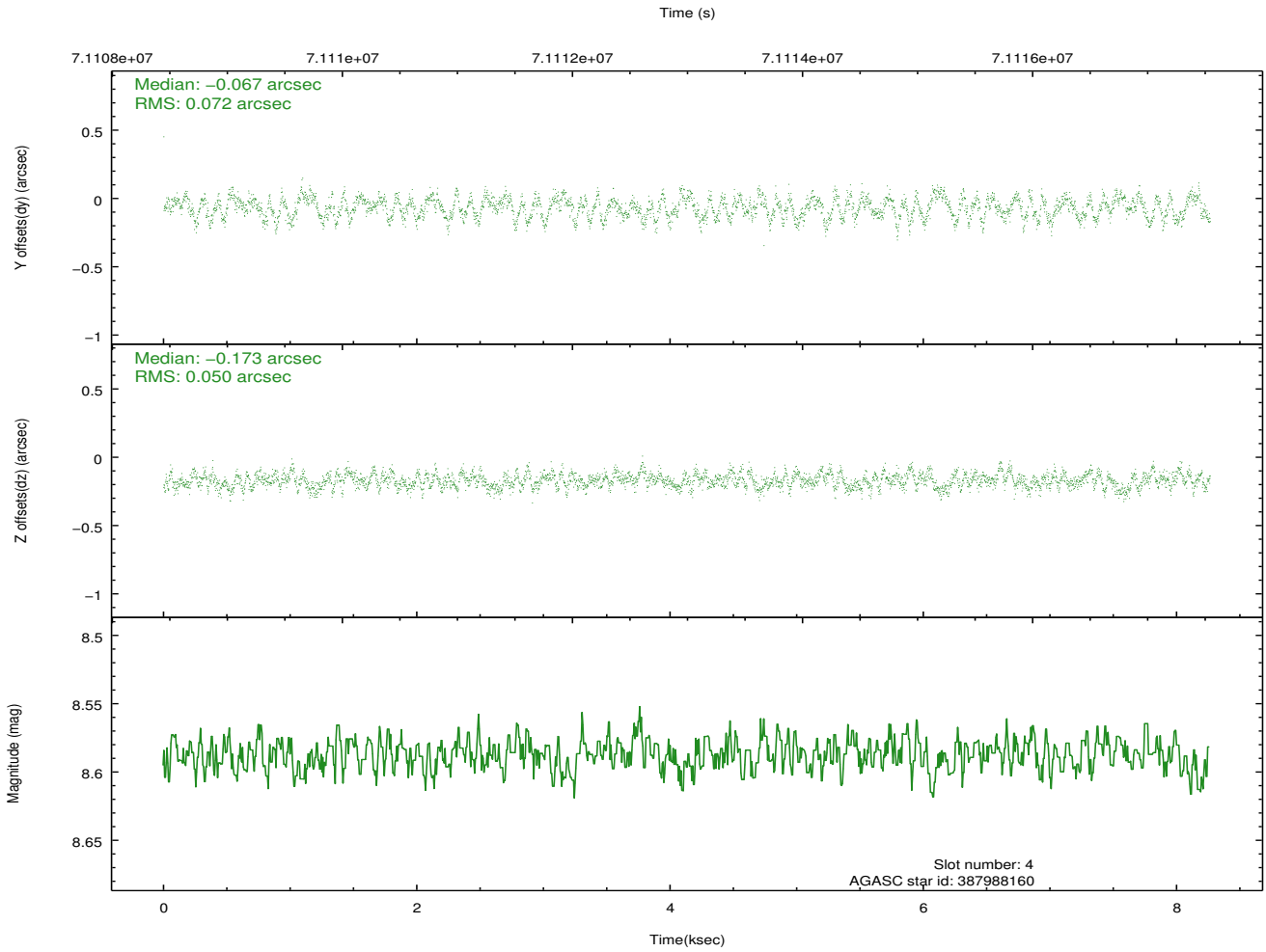
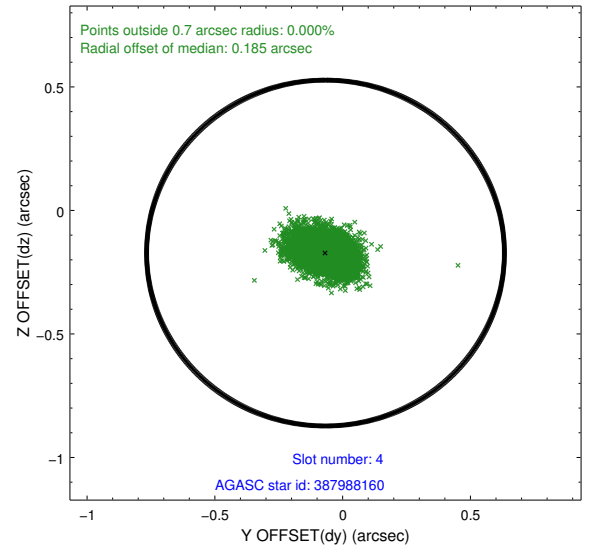
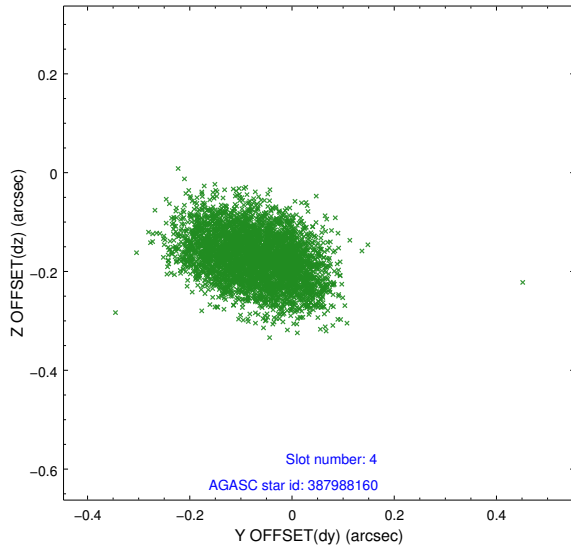
slot	status	id	mag	n_pts	med_dy	med_dz	dr1	dr2	ra	dec	mean_y	mean_z
0	FID	ACIS-S-2	7.10	2016	-0.020	-0.028	0.006	0.011	0.000000	0.000000	-754.06	-1726.16
1	FID	ACIS-S-4	7.21	2016	0.007	-0.003	0.006	0.011	0.000000	0.000000	2158.95	181.65
2	FID	ACIS-S-6	7.35	2016	-0.015	0.038	0.008	0.014	0.000000	0.000000	408.81	819.86
3	GUIDE	387984656	9.36	4027	-0.130	-0.047	0.075	0.123	119.812526	38.156148	-1379.31	247.76
4	GUIDE	387988160	8.59	4031	-0.067	-0.173	0.094	0.148	118.725955	37.845270	484.47	-2450.25
5	GUIDE	325067368	8.76	4031	0.200	0.171	0.069	0.116	119.893201	37.104442	2217.87	1452.26
6	GUIDE	389698224	9.35	4029	-0.087	0.162	0.086	0.139	120.221990	38.001937	-1146.01	1513.43
7	GUIDE	387986848	9.84	4029	0.086	-0.112	0.105	0.171	119.179684	37.932736	-142.79	-1280.60

2.4 Star Slots

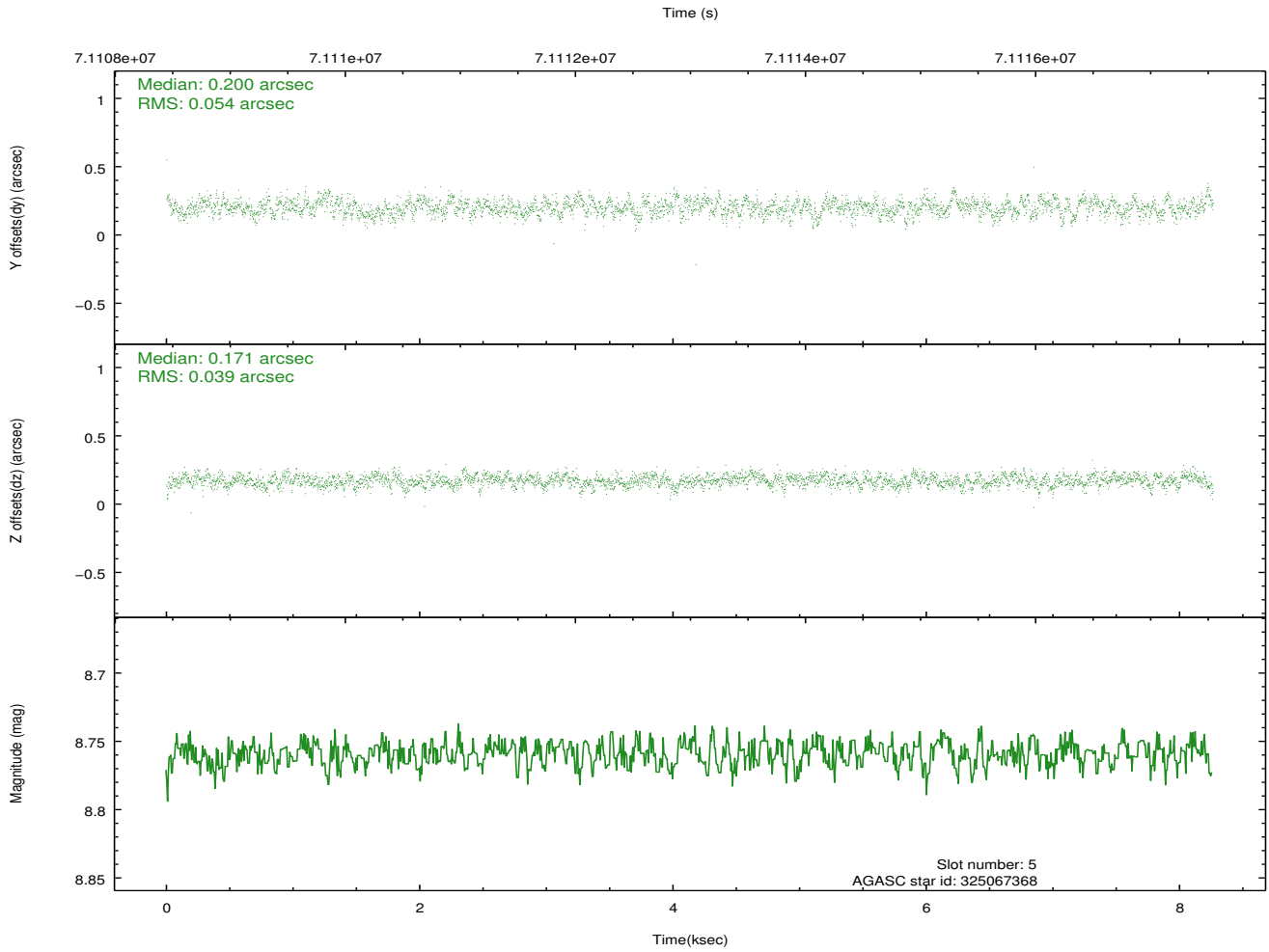
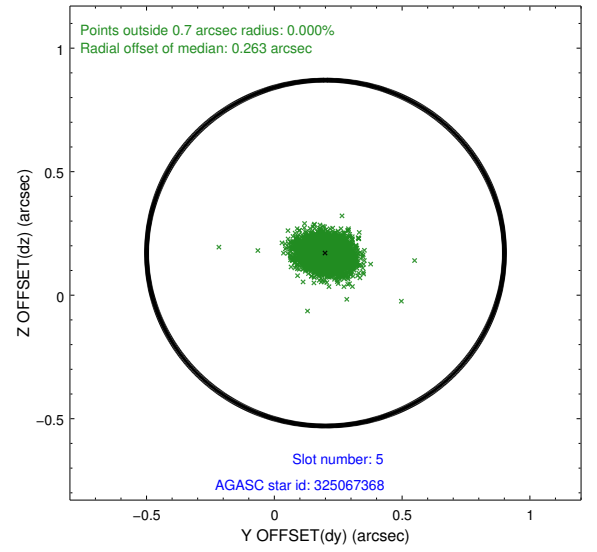
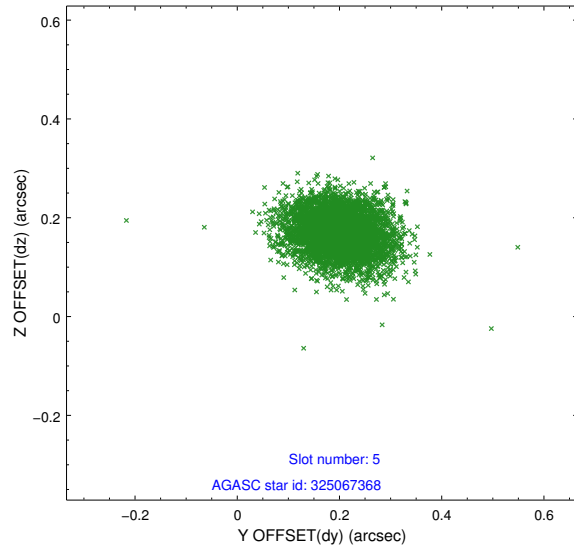
2.4.1 Slot 3



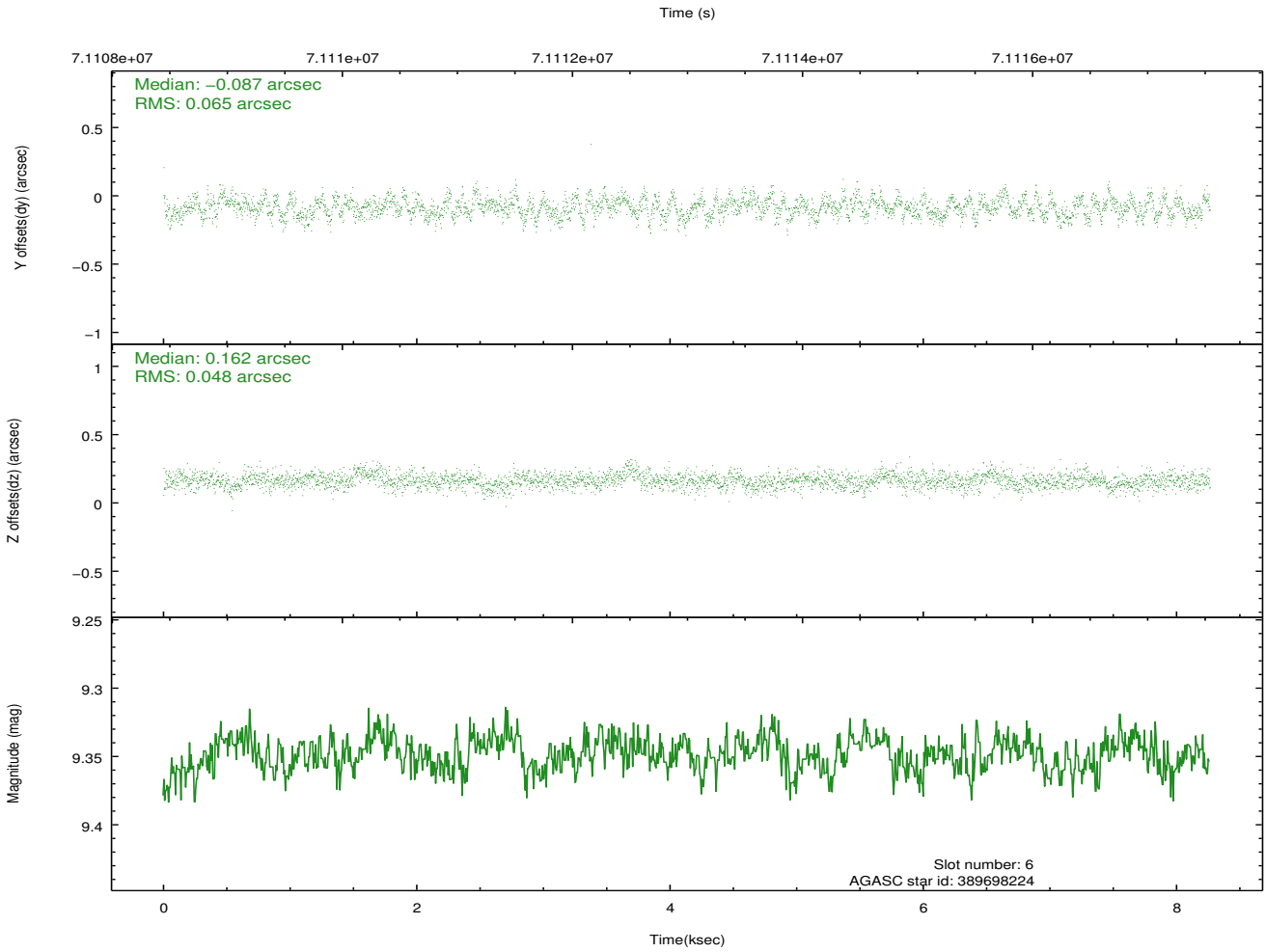
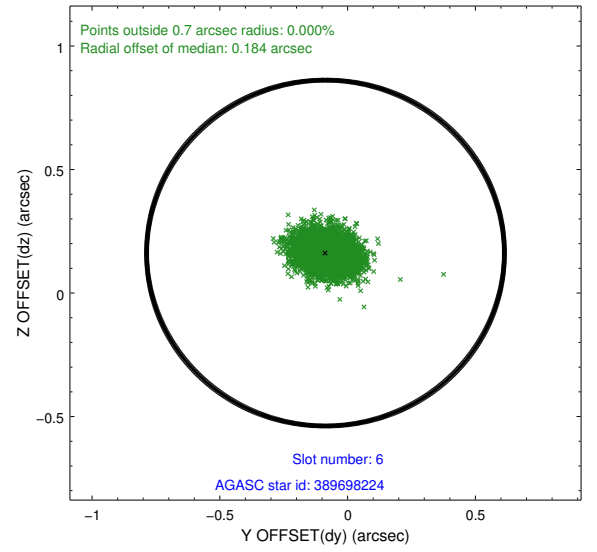
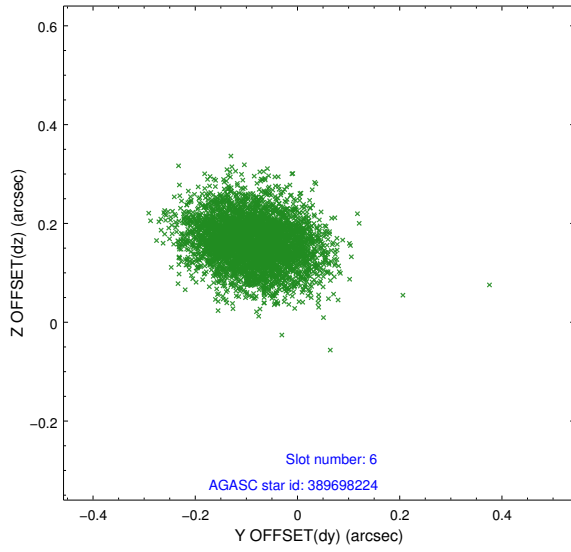
2.4.2 Slot 4



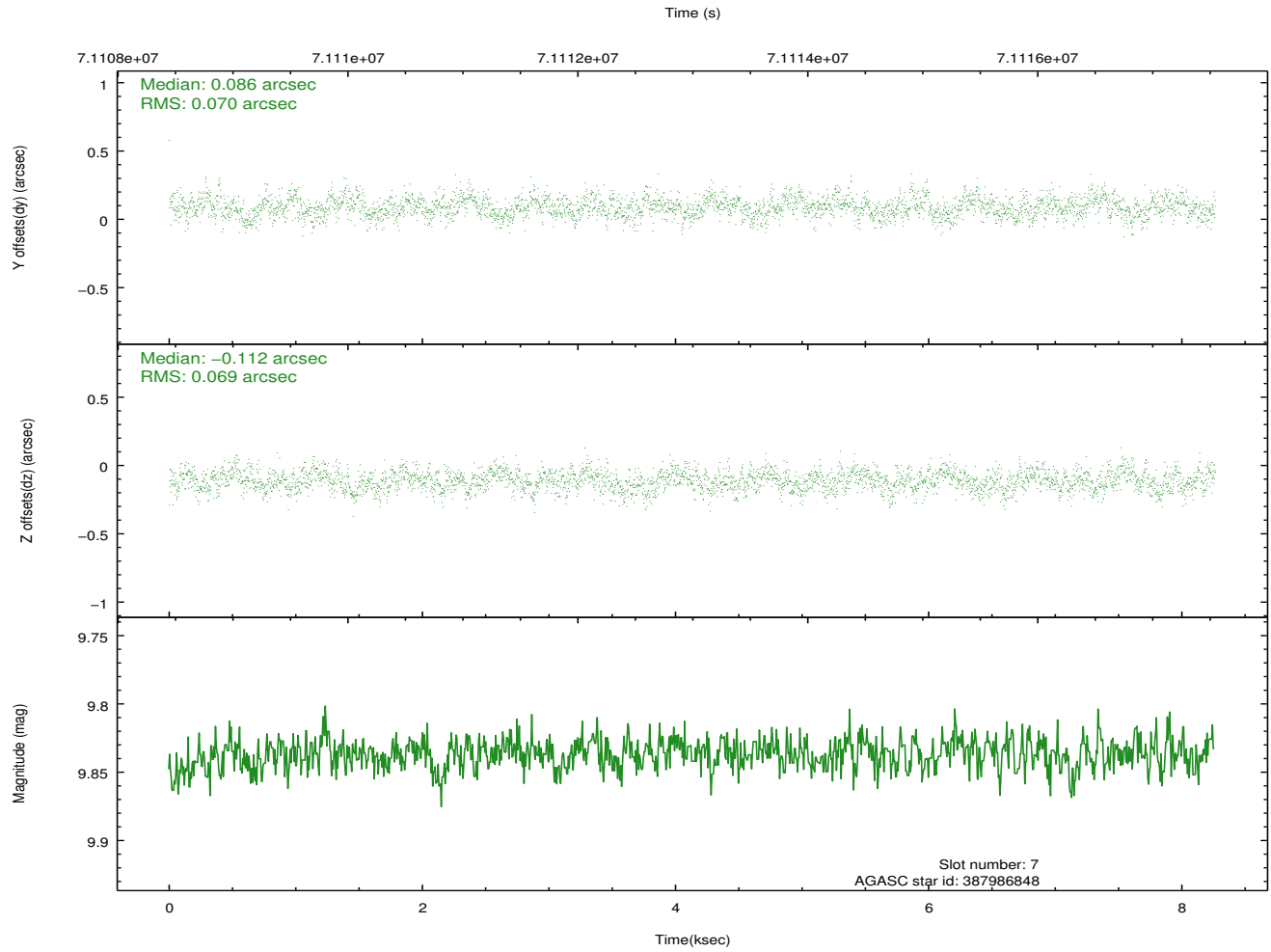
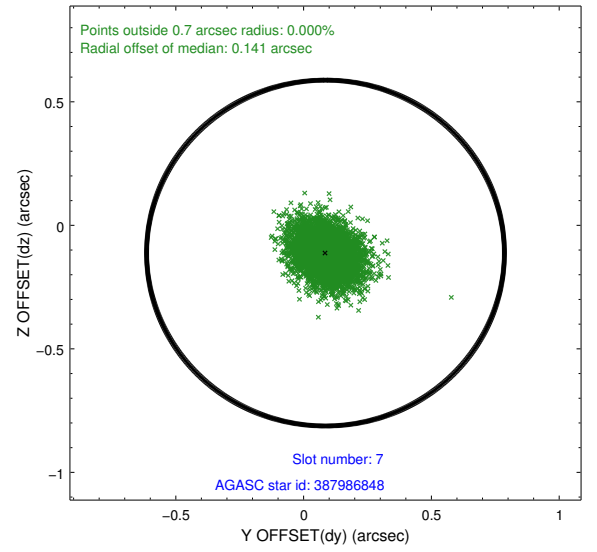
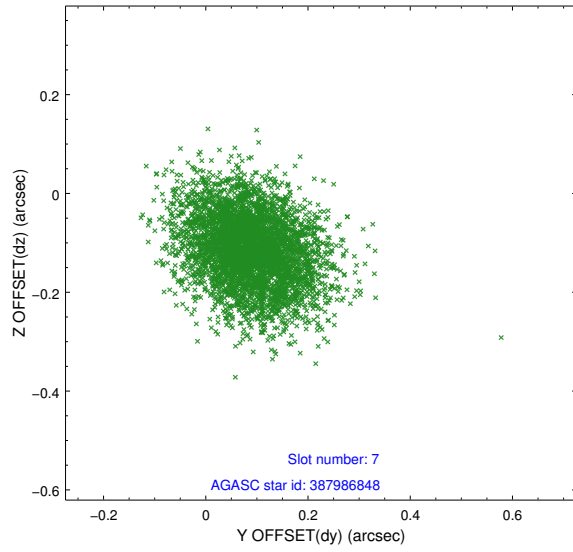
2.4.3 Slot 5



2.4.4 Slot 6

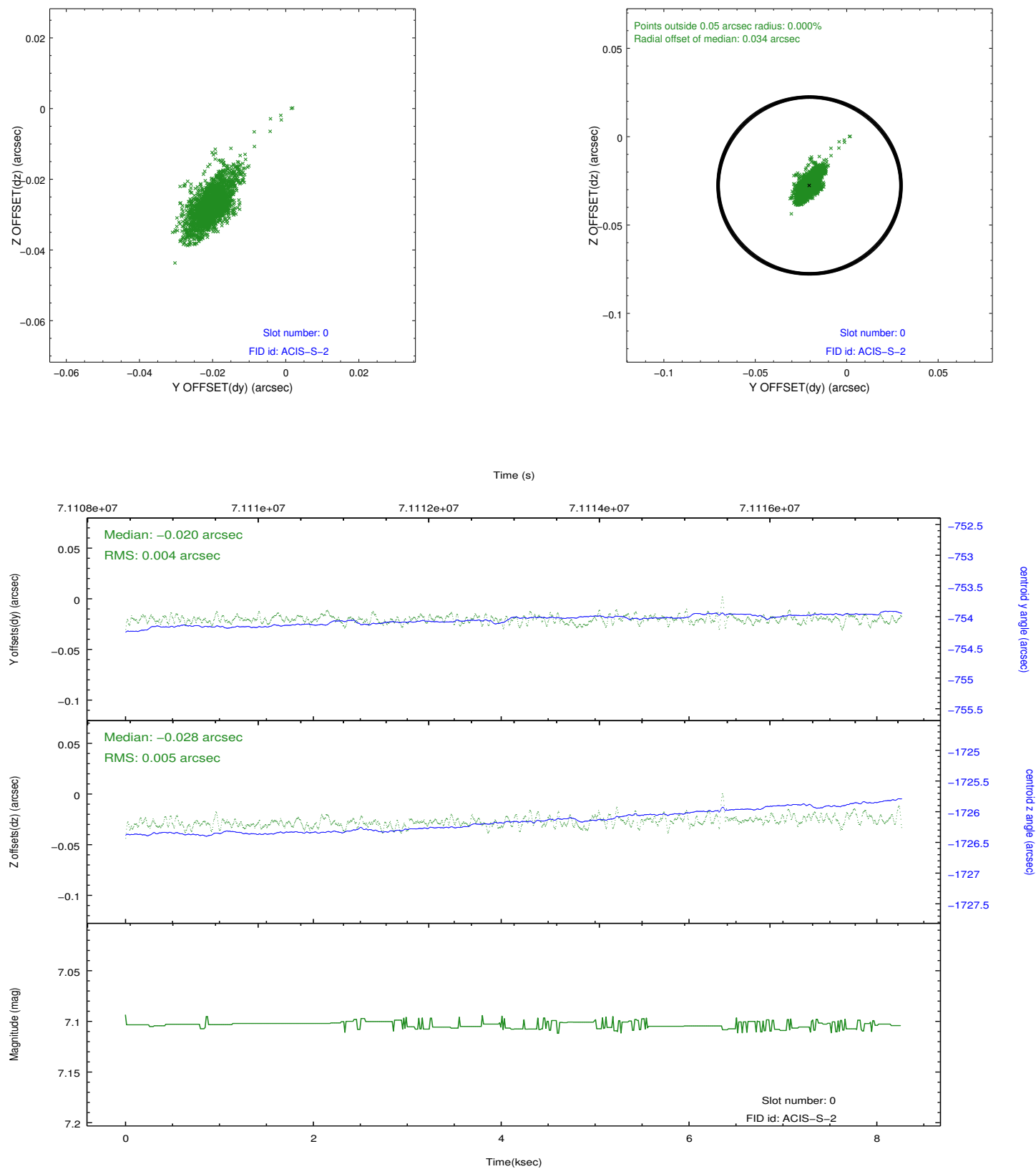


2.4.5 Slot 7

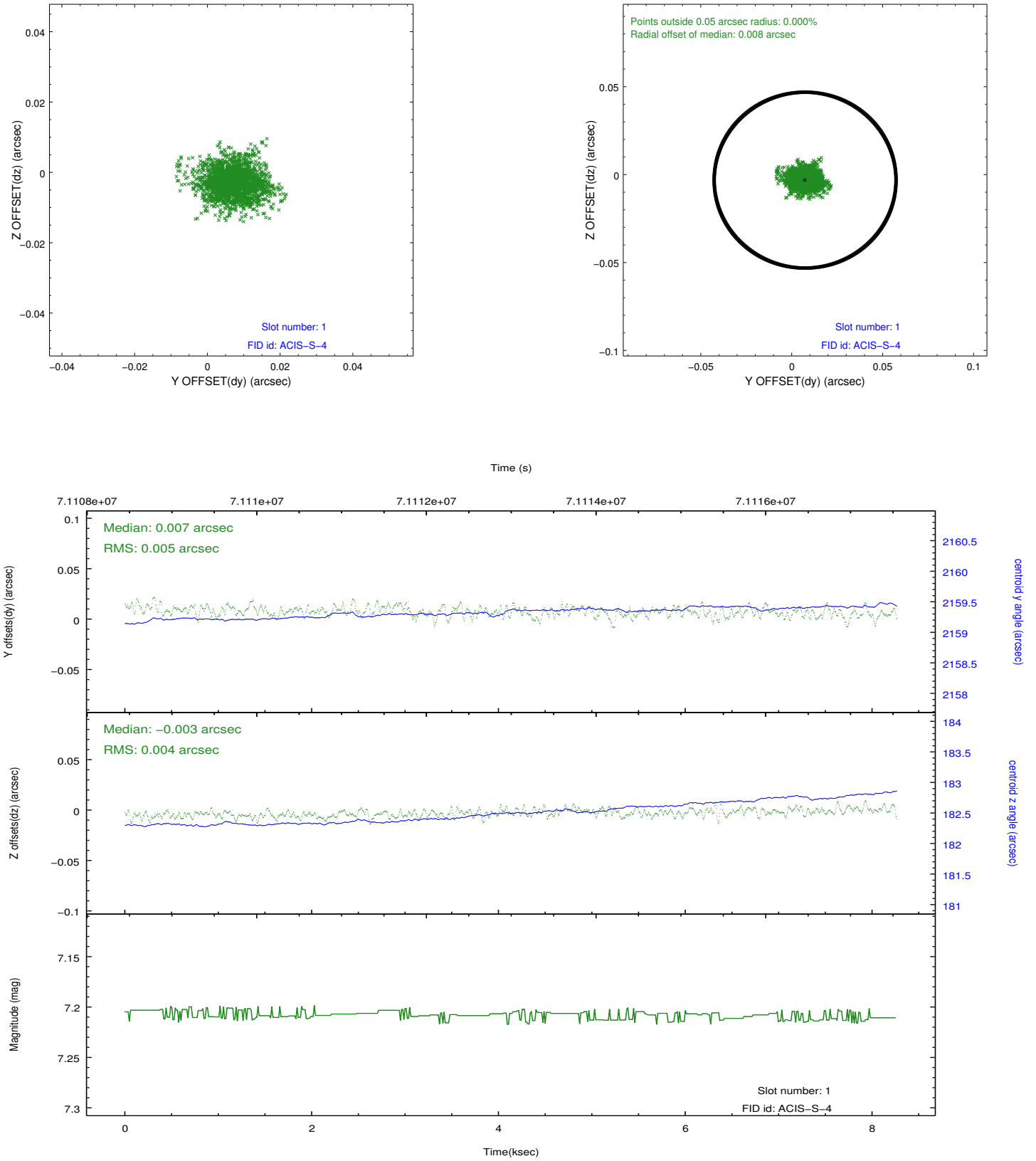


2.5 FID Slots

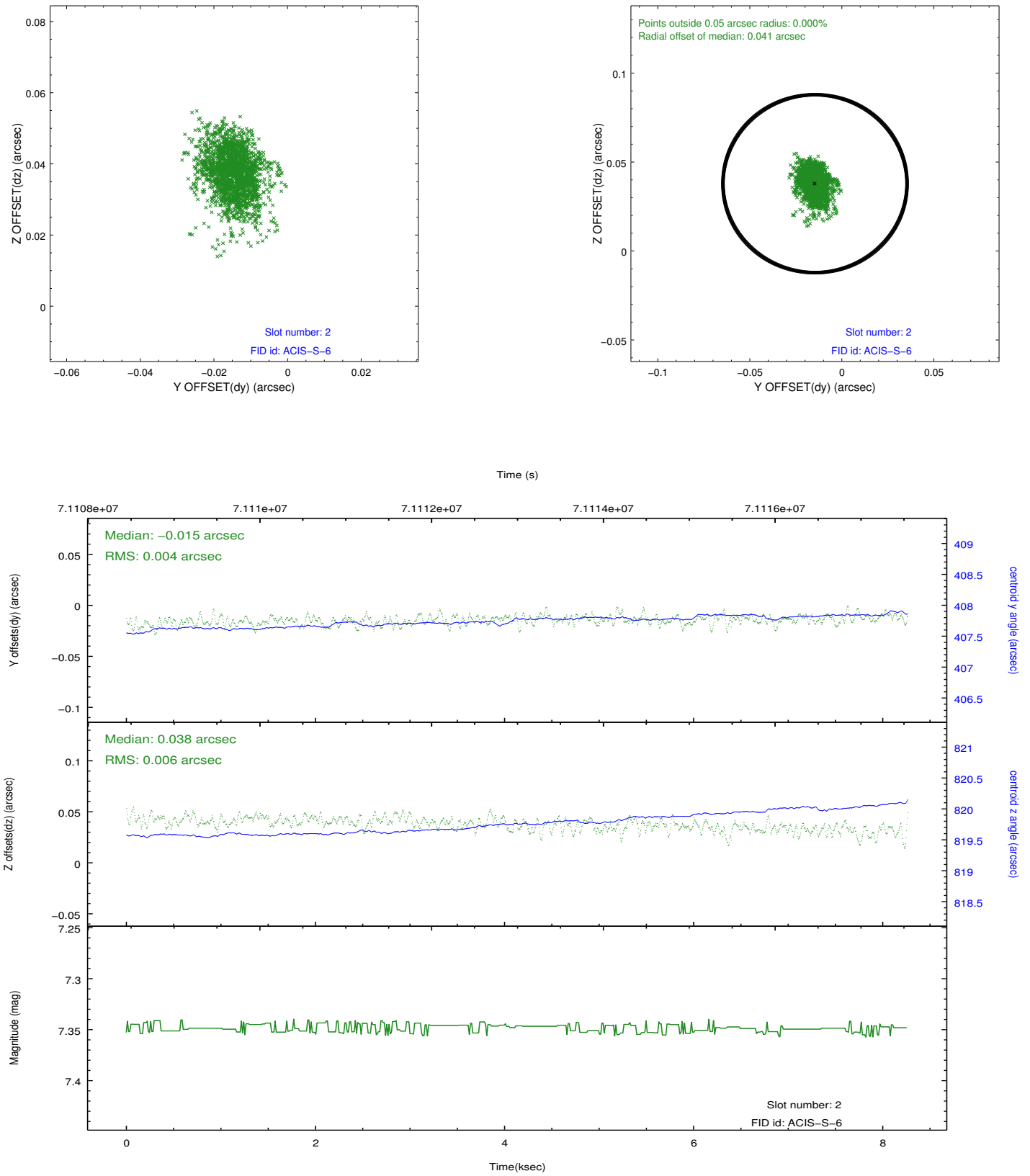
2.5.1 Slot 0



2.5.2 Slot 1



2.5.3 Slot 2



A Summary

A.1 Status

V&V Scientist	Jen Lauer
V&V Date (YYYY-MM-DD)	2012.08.27
V&V Edition	1
V&V Disposition and Status	OK
V&V Charge Time	8.261

A.2 Comments