

V&V Reference Report

L2 ASCDS Version : 8.4.4

Observation 8258 - L2 Version 3
Chandra X-Ray Center

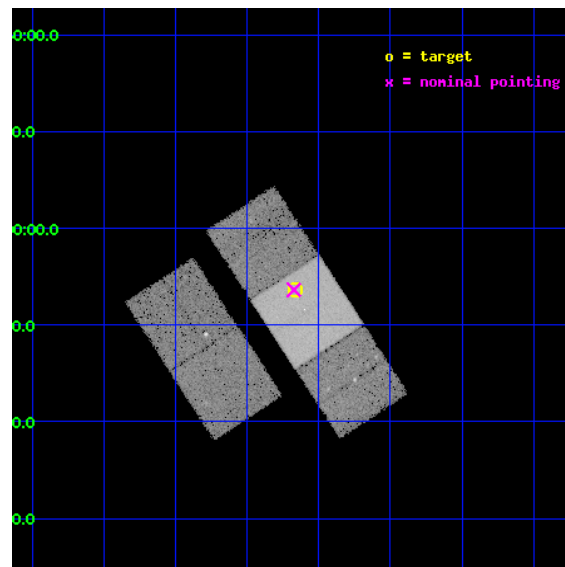
L2 Processing Date : Apr 18 2012

Contents

1	Front	2
2	OBI	3
2.1	OBI	3
2.1.1	Images	3
2.1.2	Bias	3
2.1.3	Parameters	4
2.1.4	Events	4
2.2	Compared Parameters	5
2.3	Aspect	6
2.4	Star Slots	9
2.4.1	Slot 3	9
2.4.2	Slot 4	10
2.4.3	Slot 5	11
2.4.4	Slot 6	12
2.4.5	Slot 7	13
2.5	FID Slots	14
2.5.1	Slot 0	14
2.5.2	Slot 1	15
2.5.3	Slot 2	16
A	Summary	17
A.1	Status	17
A.2	Comments	17

1 Front

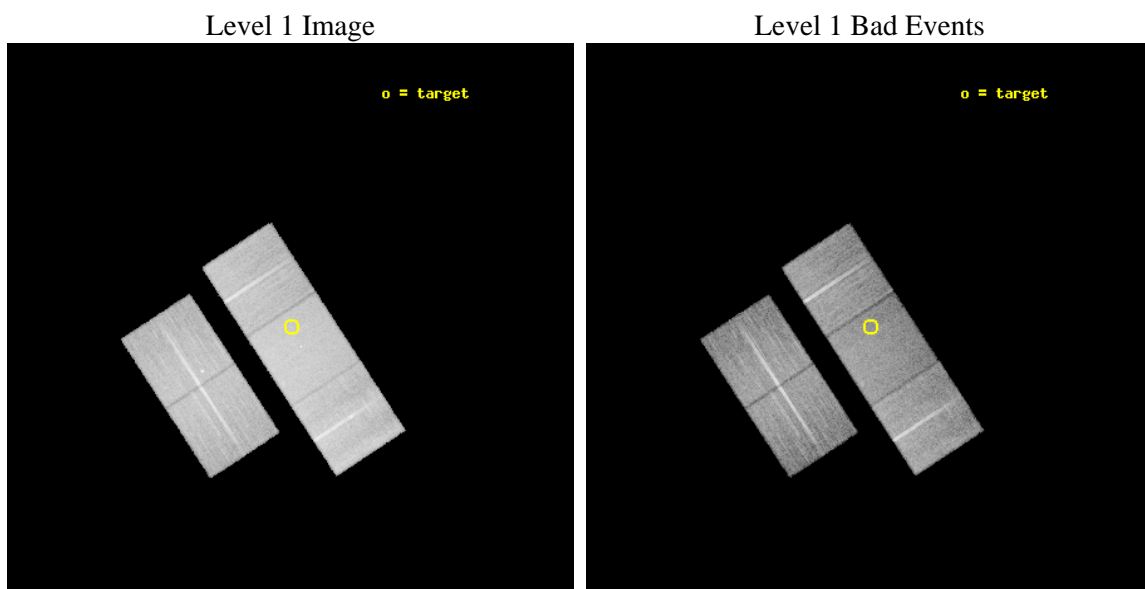
seq_num	701573	Sequence number
obs_id	8258	Observation id
title	A snapshot X-ray/radio survey of AGNs selected from the long menu of SDSS galaxies	Proposal title
observer	Dr. Sebastian Heinz	Principal investigator
object	LCRS B101008-023710	Source name
dtcycle	0	
cycle	P	events from which exps? Prim/Second/Both
ra_targ	153.166125	Observer's specified target RA [deg]
dec_targ	-1.1063	Observer's specified target Dec [deg]
ra_nom	153.16819302173	Nominal RA [deg]
dec_nom	-1.1060810251541	Nominal Dec [deg]
roll_nom	56.825839102235	Nominal Roll [deg]
revision	3	Processing version of data
ontime	17164.700132012	Sum of GTIs [s]
livetime	16940.430688319	Livetime [s]
ontime2	17158.418181419	Sum of GTIs [s]
ontime3	17161.559151649	Sum of GTIs [s]
ontime6	17164.700132012	Sum of GTIs [s]
ontime7	17164.700132012	Sum of GTIs [s]
ontime8	17161.559131742	Sum of GTIs [s]
l2events	160049	Number of level 2 events



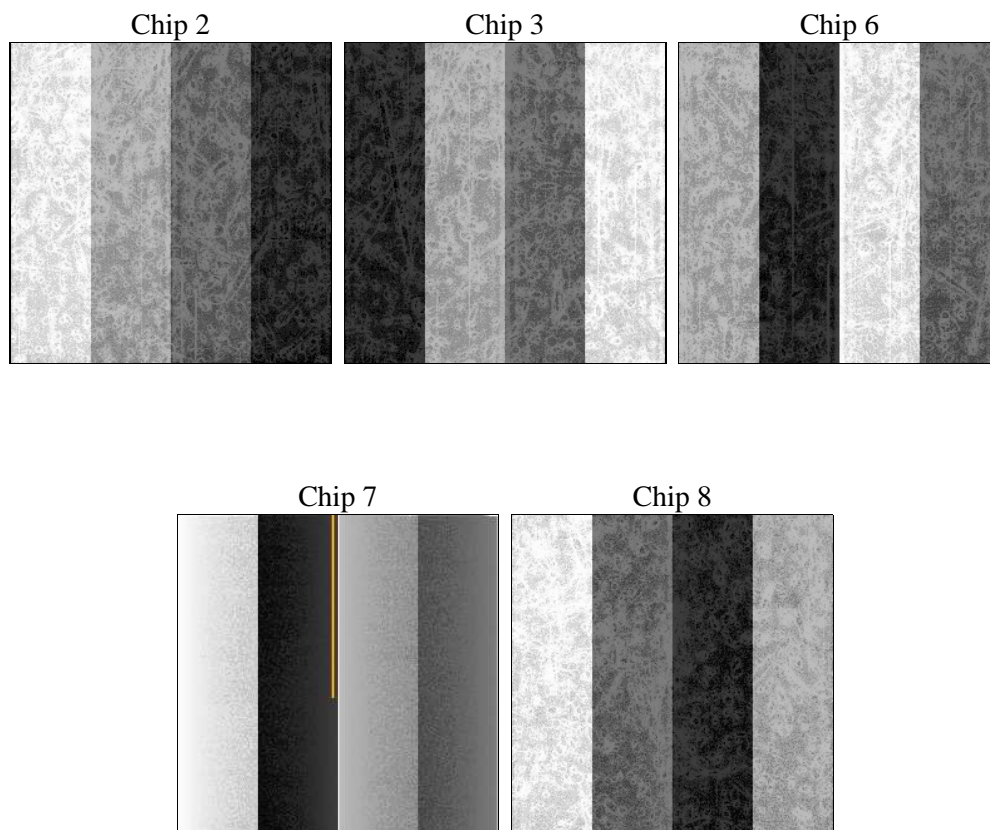
2 OBI

2.1 OBI

2.1.1 Images



2.1.2 Bias



2.1.3 Parameters

obi_num	0	Obi number	sched_exp_time	17000.000000	[s] Scheduled observation exposure time
ascdsver	8.4.4	Processing system revision	ontime	17164.700132012	Sum of GTIs [s]
caldsver	4.4.9	 	ontime2	17158.418181419	Sum of GTIs [s]
date	2012-04-18T12:20:12	Date and time of file creation	ontime3	17161.559151649	Sum of GTIs [s]
revision	3	Processing version of data	ontime6	17164.700132012	Sum of GTIs [s]
			ontime7	17164.700132012	Sum of GTIs [s]
			ontime8	17161.559131742	Sum of GTIs [s]
			l1events	927605	Number of level 1 events

2.1.4 Events

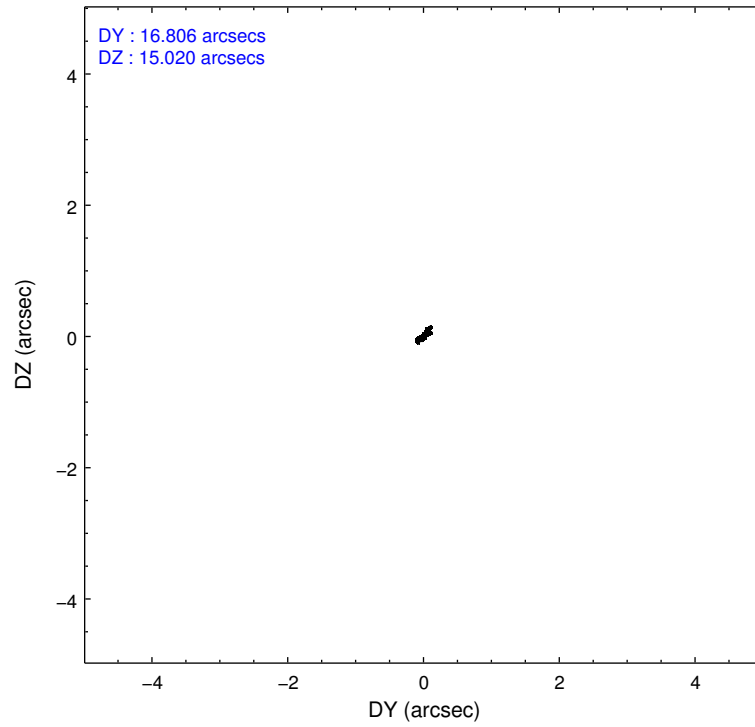
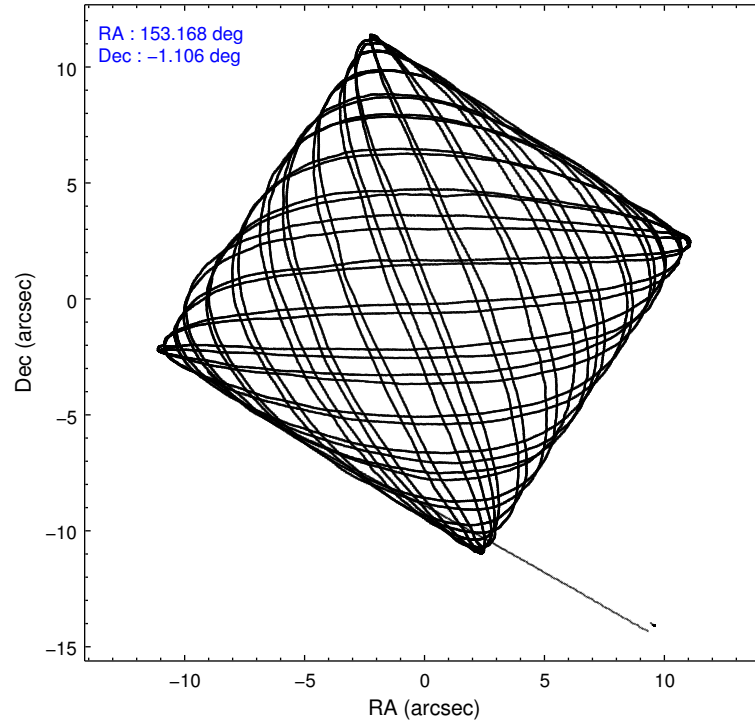
	ccd 2	ccd 3	ccd 6	ccd 7	ccd 8
level 1 events	166323	159701	167357	221958	212266
rejected events	146935	140737	147912	130158	164986
rejected %	88%	88%	88%	58%	77%

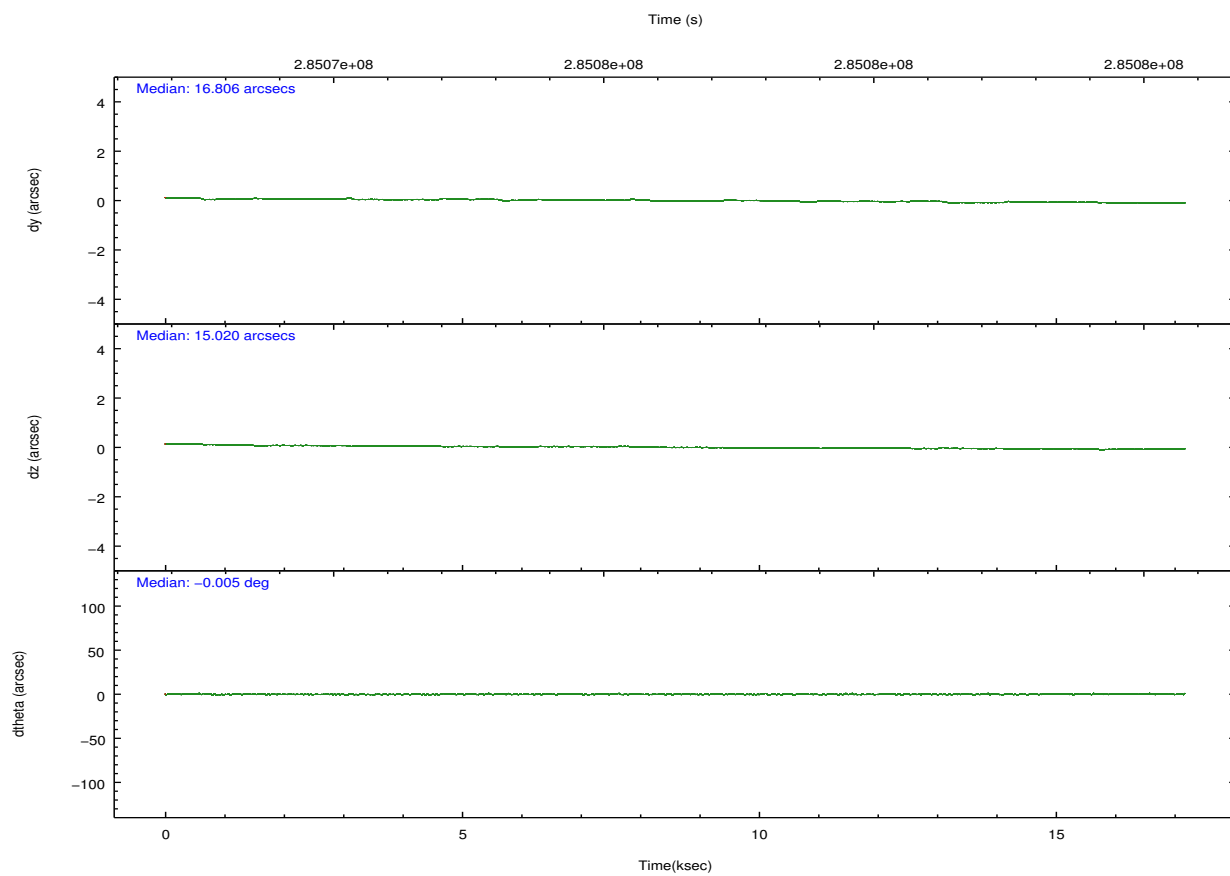
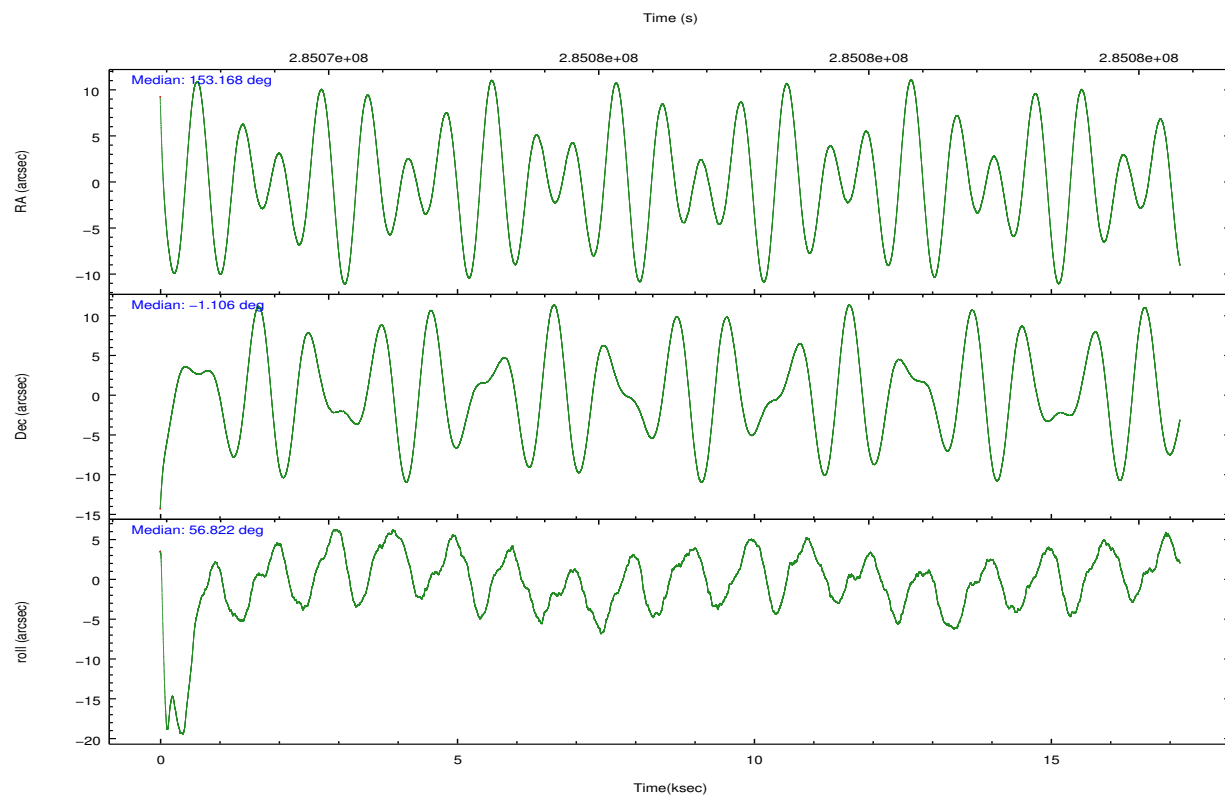
	ccd 2	ccd 3	ccd 6	ccd 7	ccd 8
grade 0 events	9033	8321	7676	7971	15017
	5%	5%	4%	3%	7%
grade 1 events	102	91	82	246	165
	0%	0%	0%	0%	0%
grade 2 events	3960	3717	4344	18946	10856
	2%	2%	2%	8%	5%
grade 3 events	1675	1872	1786	8054	5067
	1%	1%	1%	3%	2%
grade 4 events	1788	1854	1756	7958	4574
	1%	1%	1%	3%	2%
grade 5 events	6241	7271	7599	20907	10039
	3%	4%	4%	9%	4%
grade 6 events	3154	3398	4063	49890	12333
	1%	2%	2%	22%	5%
grade 7 events	140370	133177	140051	107986	154215
	84%	83%	83%	48%	72%

2.2 Compared Parameters

Parameter	Planned	Actual	Parameter	Planned	Actual
Instrument	ACIS	ACIS	Obspar format version number	7	7
Detector	ACIS-23678	ACIS-23678	Obspar file type	PREDICTED	ACTUAL
Grating	NONE	NONE	Obspar update status	NONE	UPDATED
Data mode	VFAINT	VFAINT	CCD I0 on	N	N
Observation mode	POINTING	POINTING	CCD I1 on	N	N
[deg] Pointing RA	153.167067	153.1681930217331	CCD I2 on	O1	Y
[deg] Pointing Dec	-1.133380	-1.106081025154134	CCD I3 on	O2	Y
[deg] Pointing Roll	56.669169	56.82583910223463	CCD S0 on	N	N
[mm] SIM focus pos	-0.684267	-0.6828225247311905	CCD S1 on	N	N
[mm] SIM defocus	0	0.001444936568705701	CCD S2 on	O3	Y
[mm] SIM translation stage pos	-190.132523	-190.1400660498719	CCD S3 on	Y	Y
[mm] SIM translation stage offset	0	0.00754346686406393	CCD S4 on	O4	Y
[s] Observation start time (MET)	285067910.184000	285066822.05578	CCD S5 on	N	N
Observation start date	2007-01-13T09:30:45	2007-01-13T09:13:42	Number of optional ACIS chips dropped	0	0
[s] Observation end time (MET)	285084910.184000	285085296.65665	On-chip summing requested	N	N
Observation end date	2007-01-13T14:14:05	2007-01-13T14:21:36	Subarray requested	NONE	NONE
Read mode	TIMED	TIMED	Alternating exposures requested	N	N
			[s] Primary exposure time	0.000000	3.1

2.3 Aspect



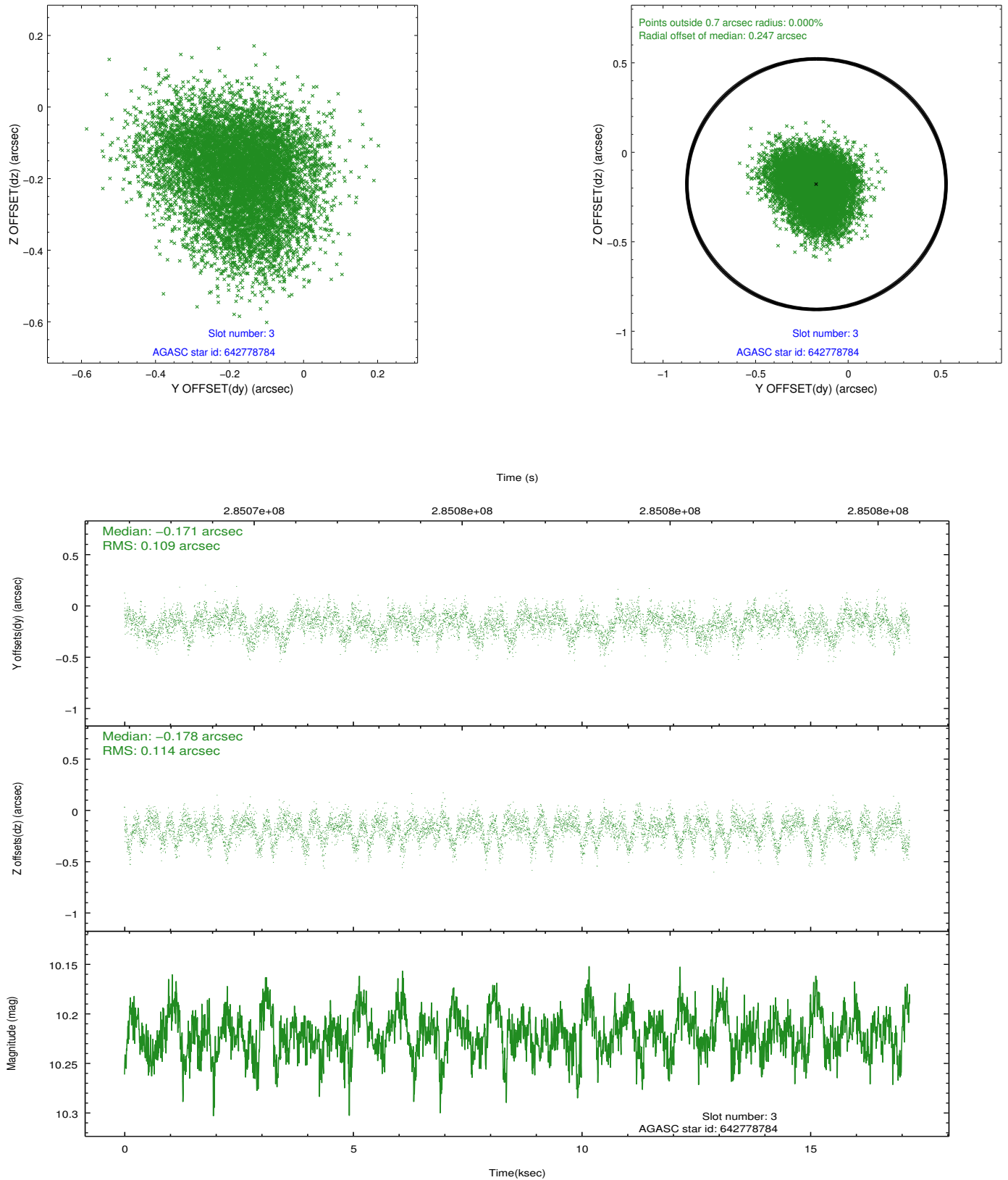


Slot Statistics

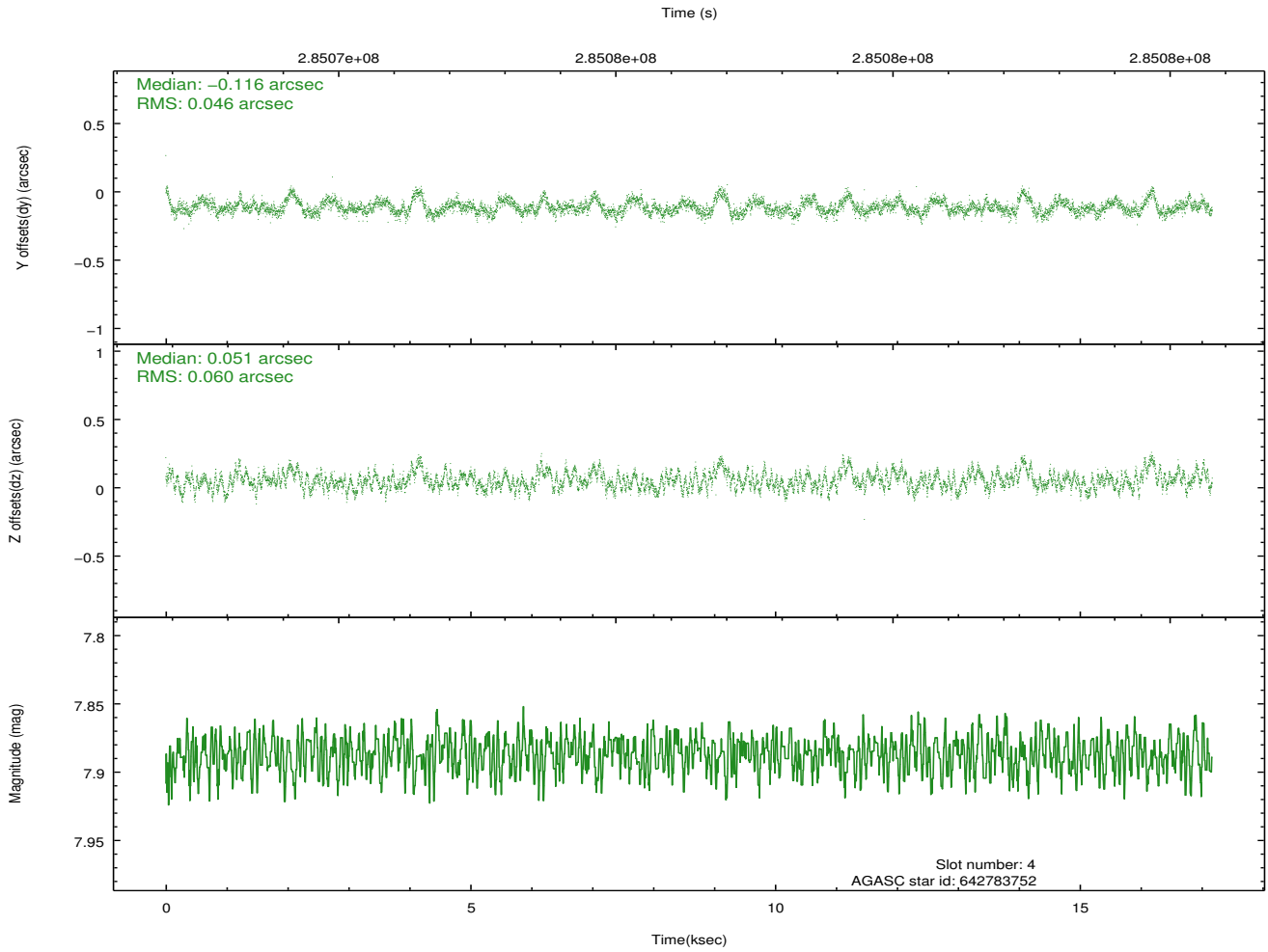
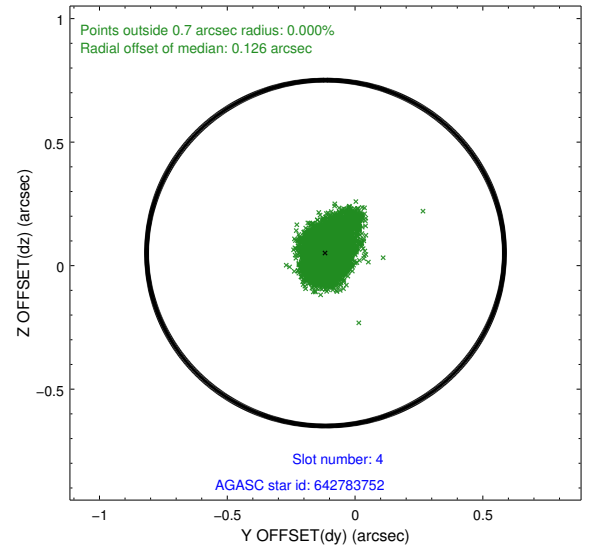
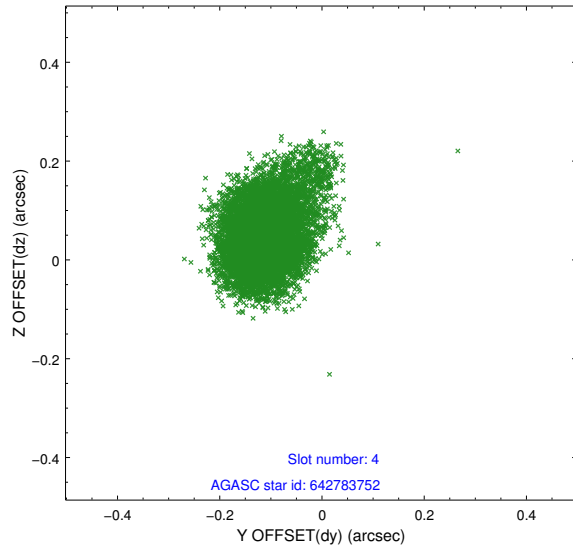
slot	status	id	mag	n_pts	med_dy	med_dz	dr1	dr2	ra	dec	mean_y	mean_z
0	FID	ACIS-S-2	7.10	4189	-0.104	-0.035	0.007	0.011	0.000000	0.000000	-769.91	-1736.45
1	FID	ACIS-S-4	7.20	4189	0.215	0.060	0.005	0.010	0.000000	0.000000	2143.56	171.90
2	FID	ACIS-S-5	7.23	4186	-0.142	-0.016	0.007	0.011	0.000000	0.000000	-1822.50	165.73
3	GUIDE	642778784	10.22	8360	-0.171	-0.178	0.170	0.270	153.124460	-0.637096	1407.69	1107.96
4	GUIDE	642783752	7.89	8376	-0.116	0.051	0.078	0.136	153.639411	-1.126972	953.71	-1407.30
5	GUIDE	642784088	10.09	8364	0.207	0.349	0.238	0.358	153.550230	-1.698994	-942.97	-2270.50
6	GUIDE	642784392	9.96	8356	0.175	-0.140	0.163	0.262	152.895853	-1.186393	-695.83	711.09
7	GUIDE	642785416	8.94	8373	-0.092	-0.075	0.097	0.161	153.061684	-1.260657	-591.09	65.40

2.4 Star Slots

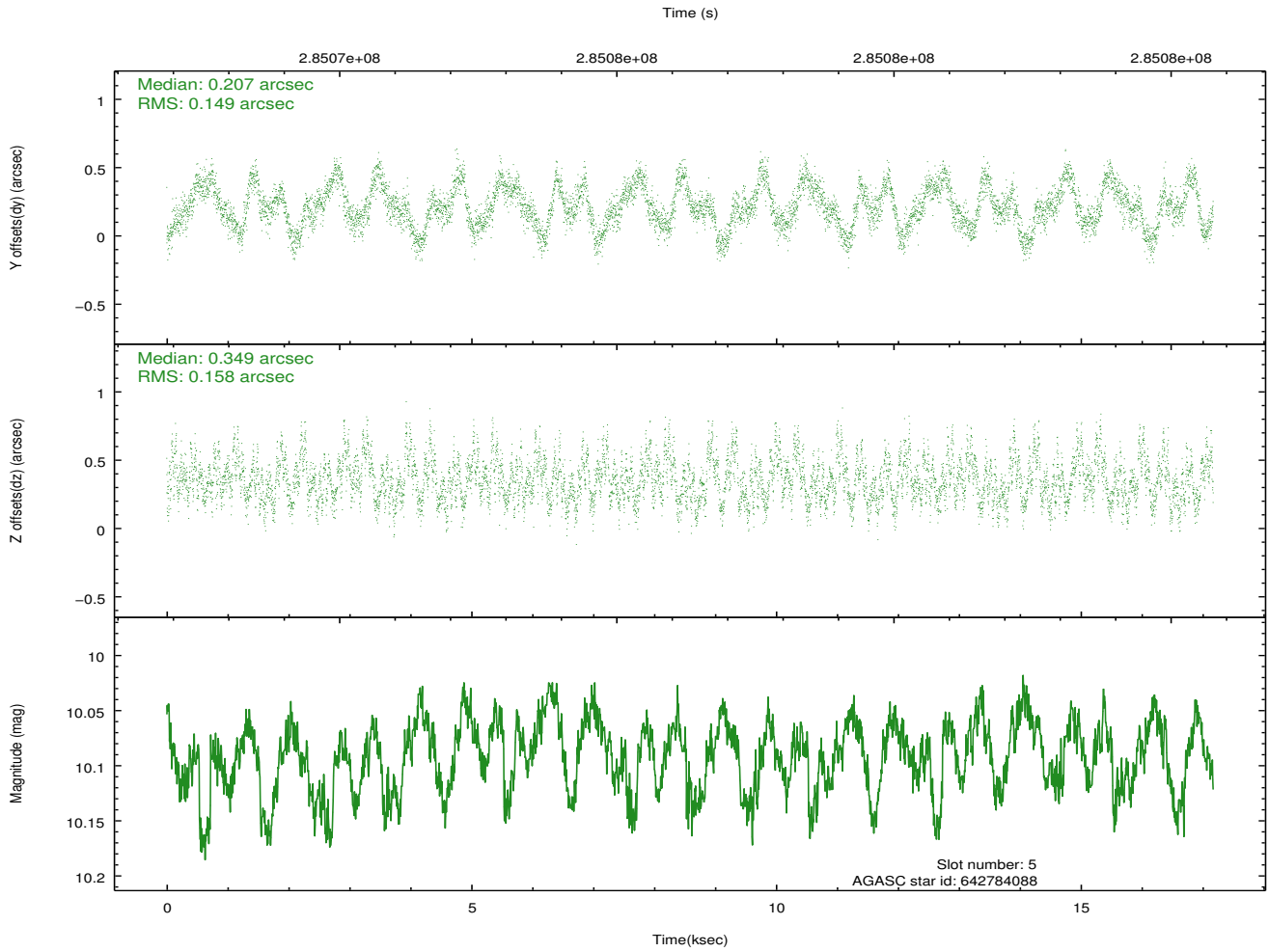
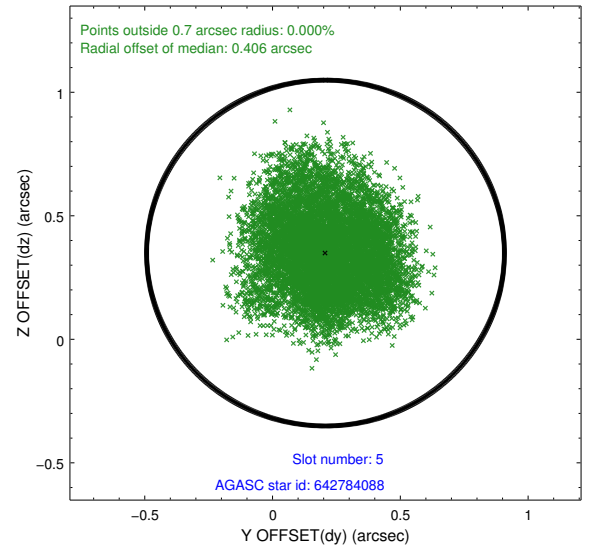
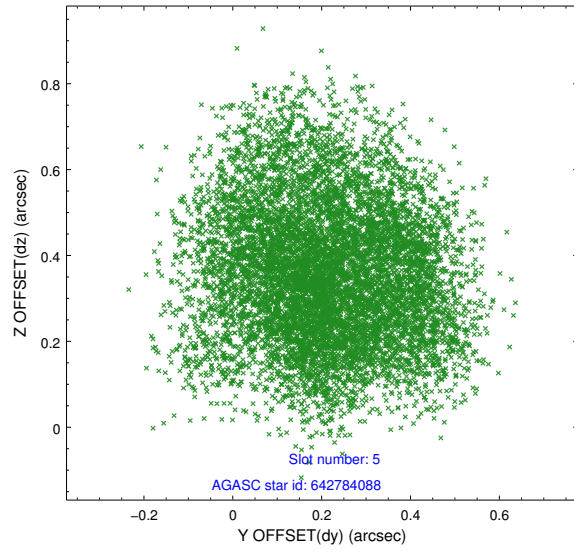
2.4.1 Slot 3



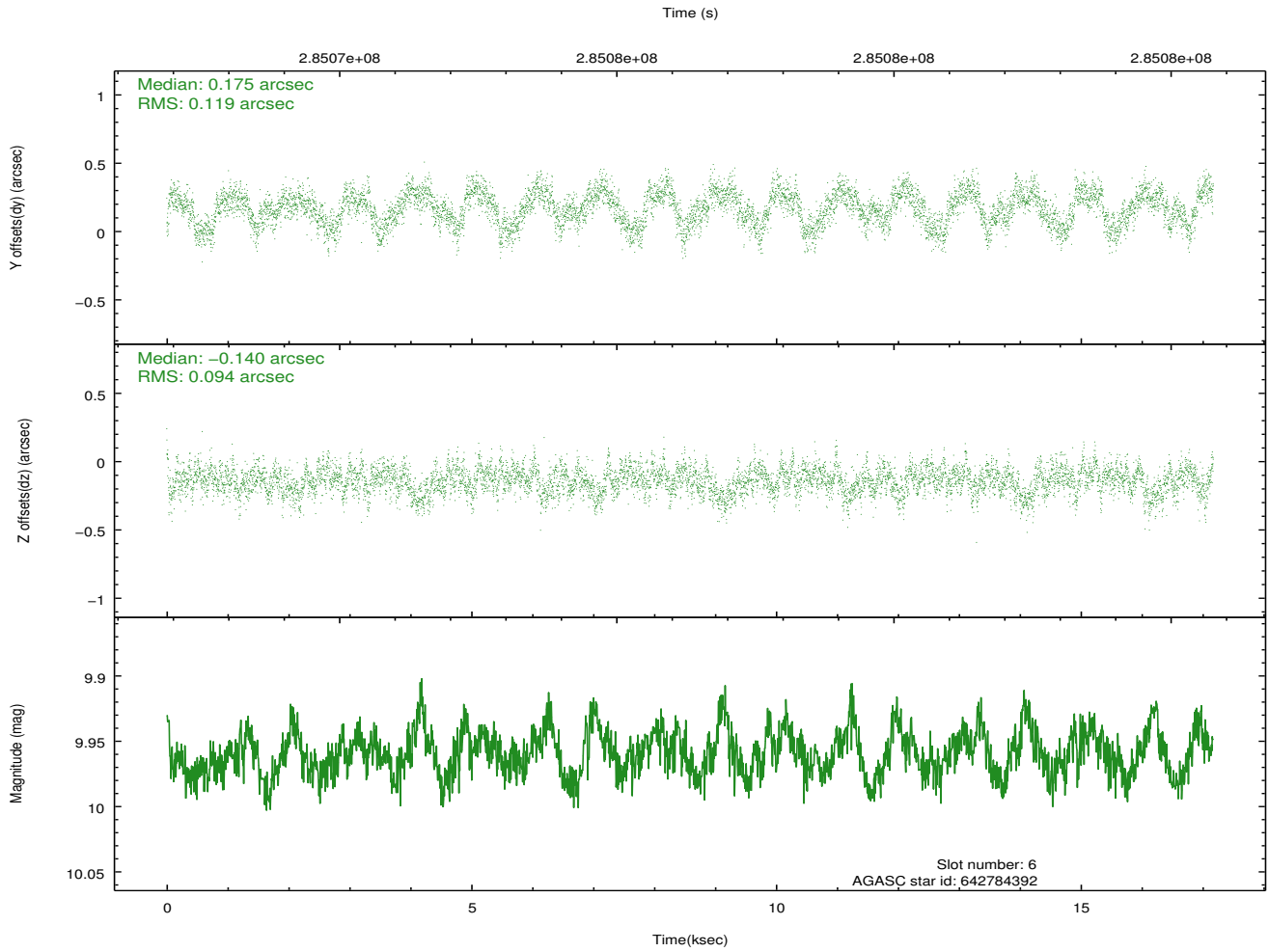
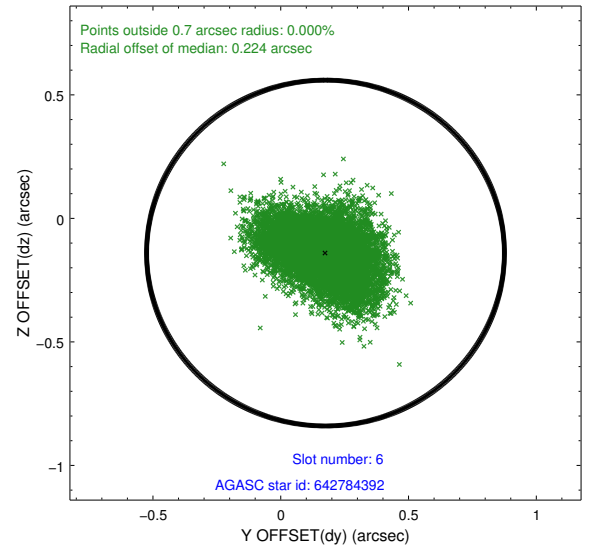
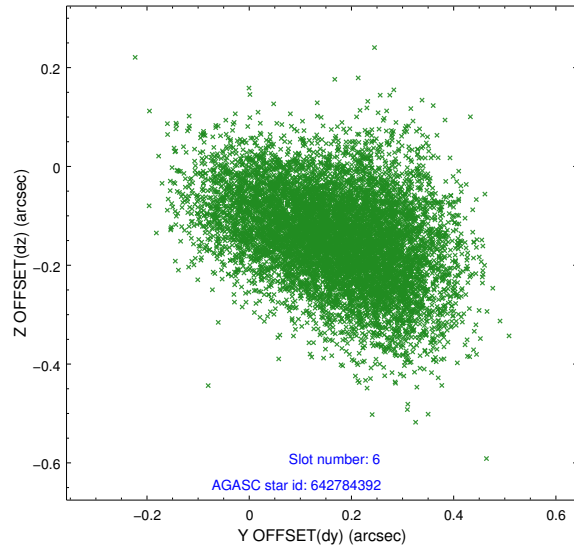
2.4.2 Slot 4



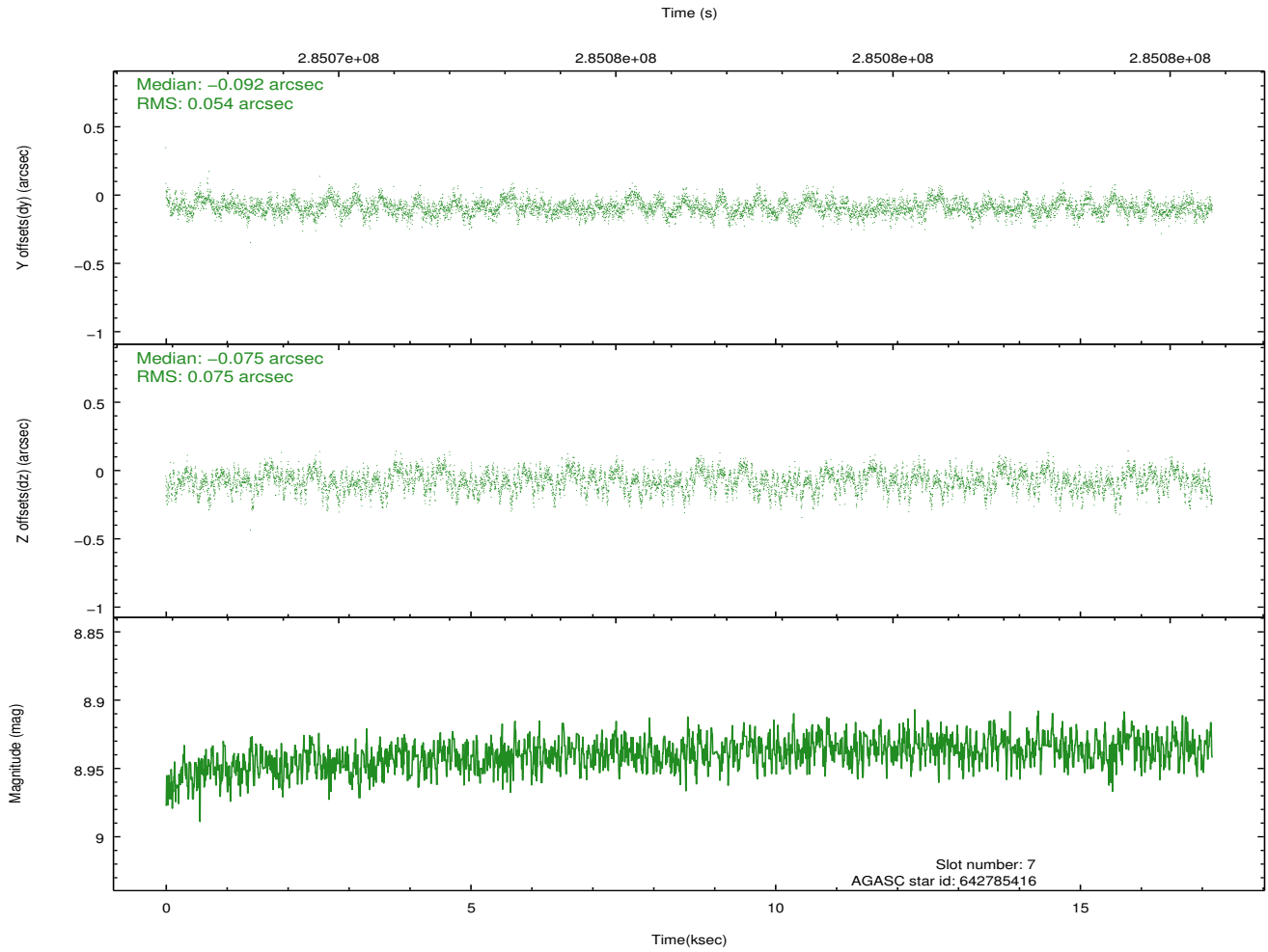
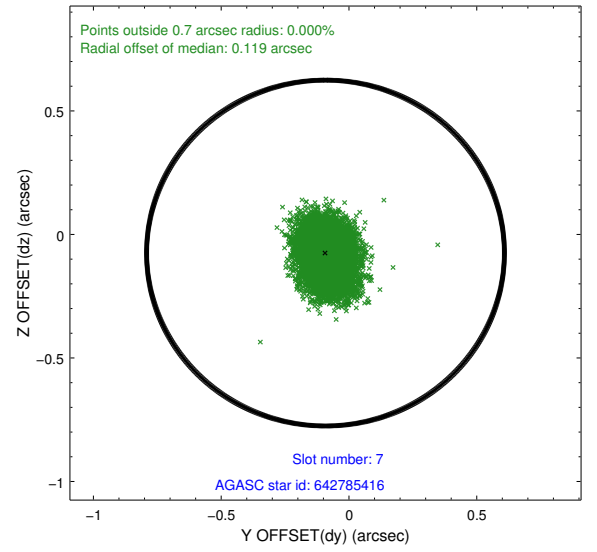
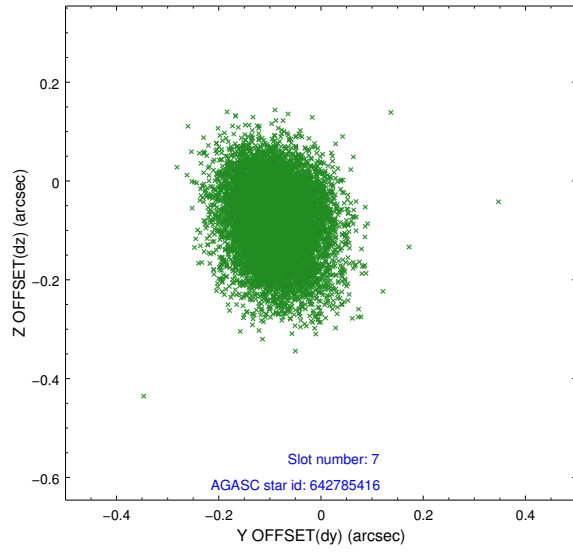
2.4.3 Slot 5



2.4.4 Slot 6

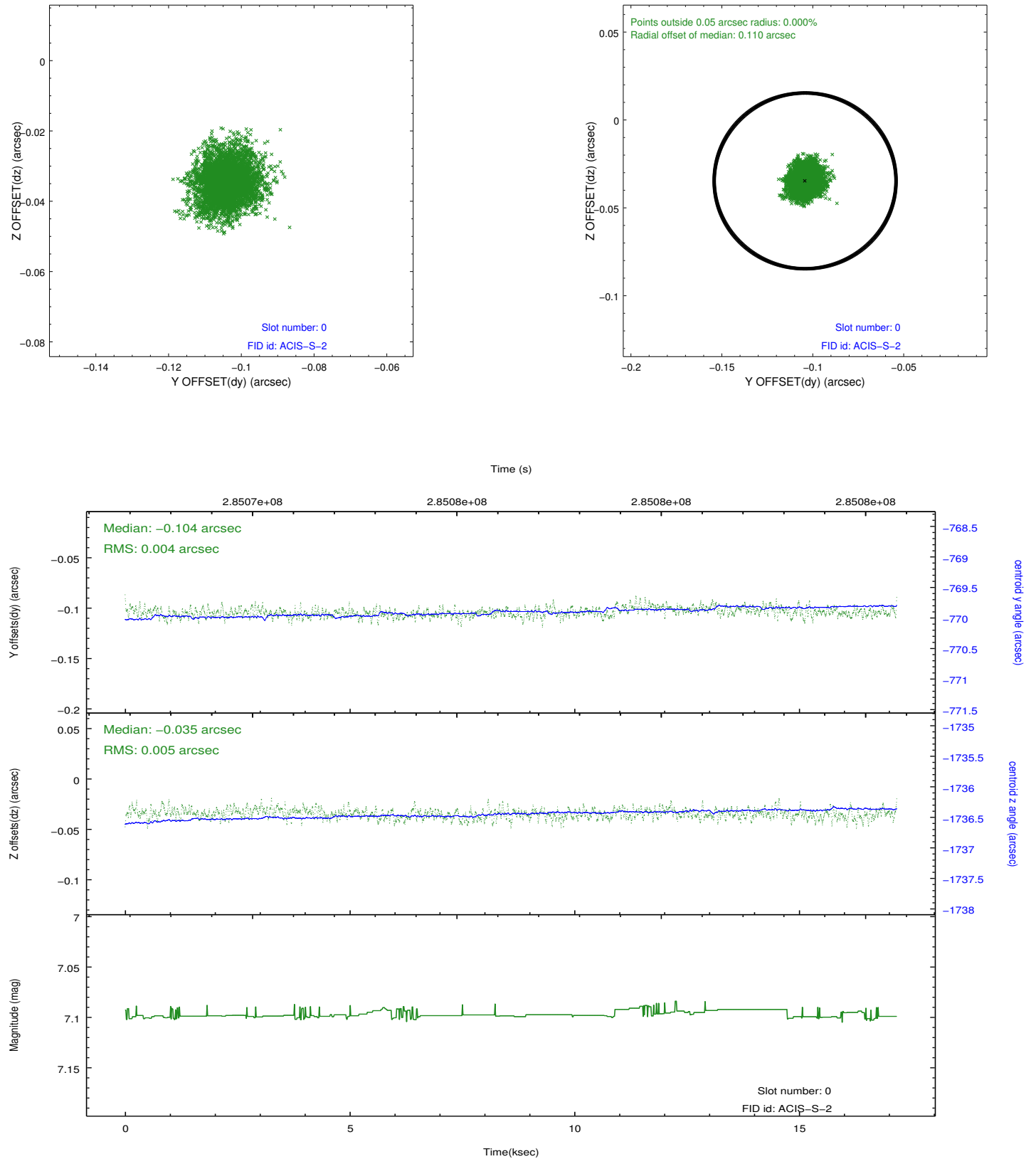


2.4.5 Slot 7

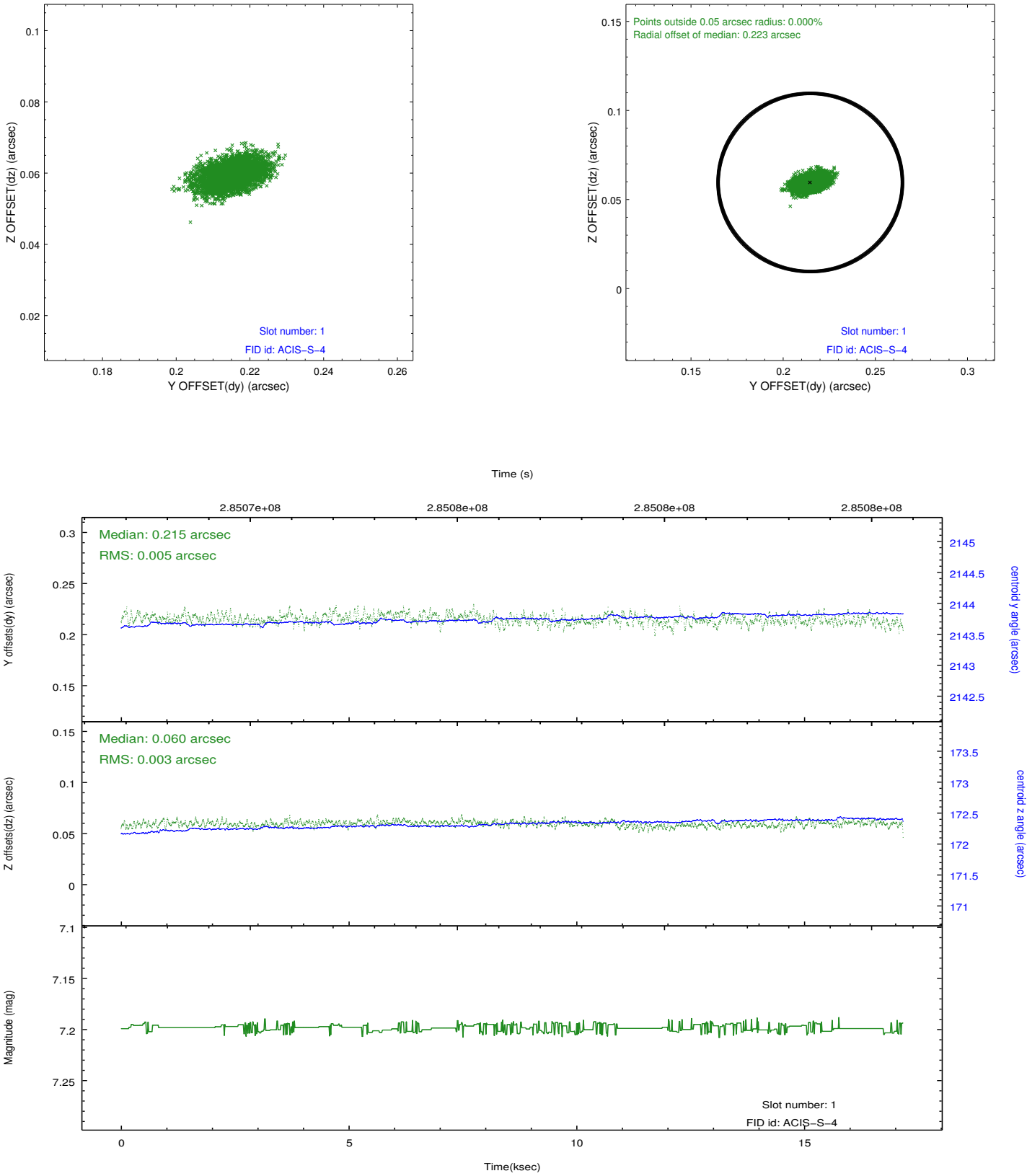


2.5 FID Slots

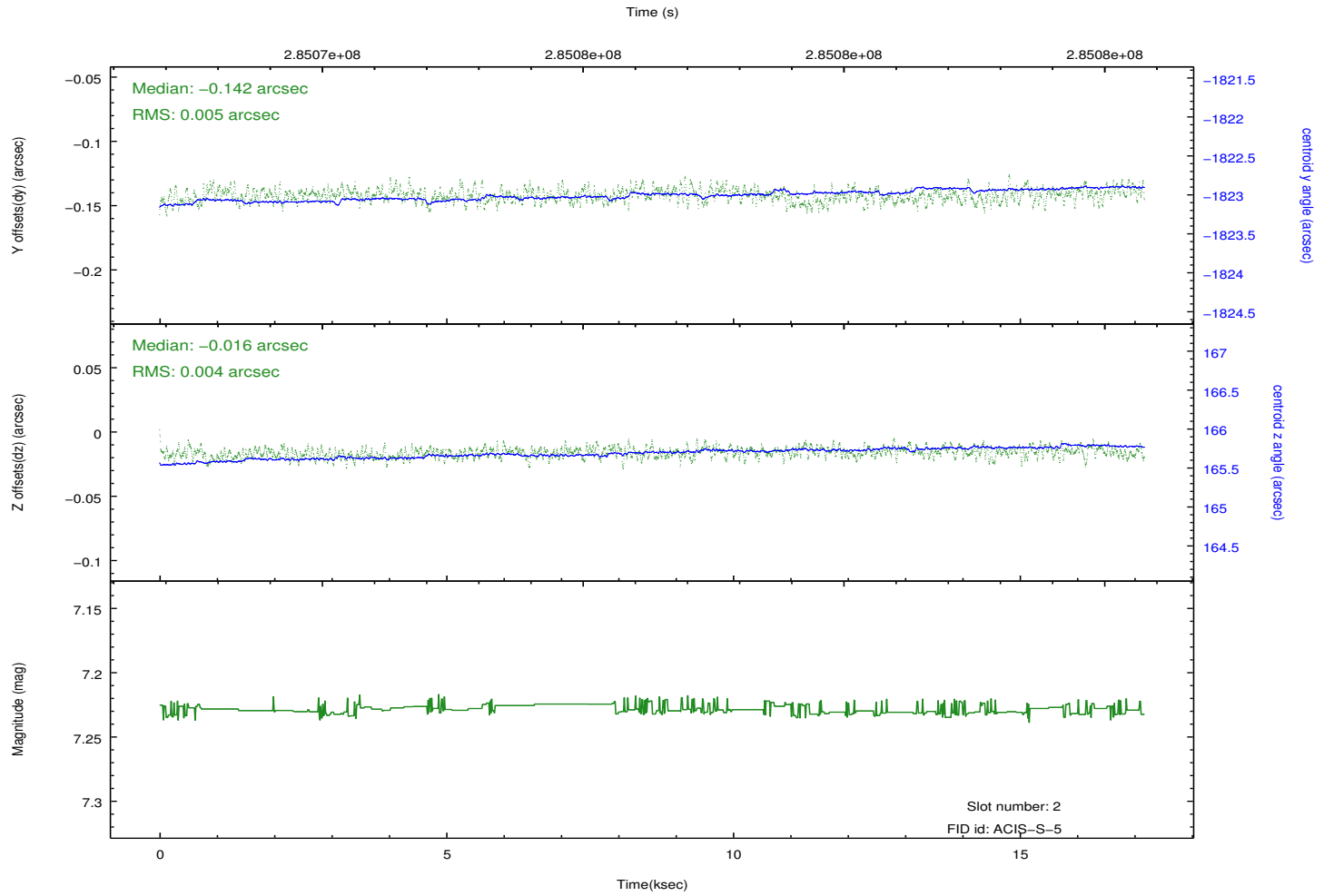
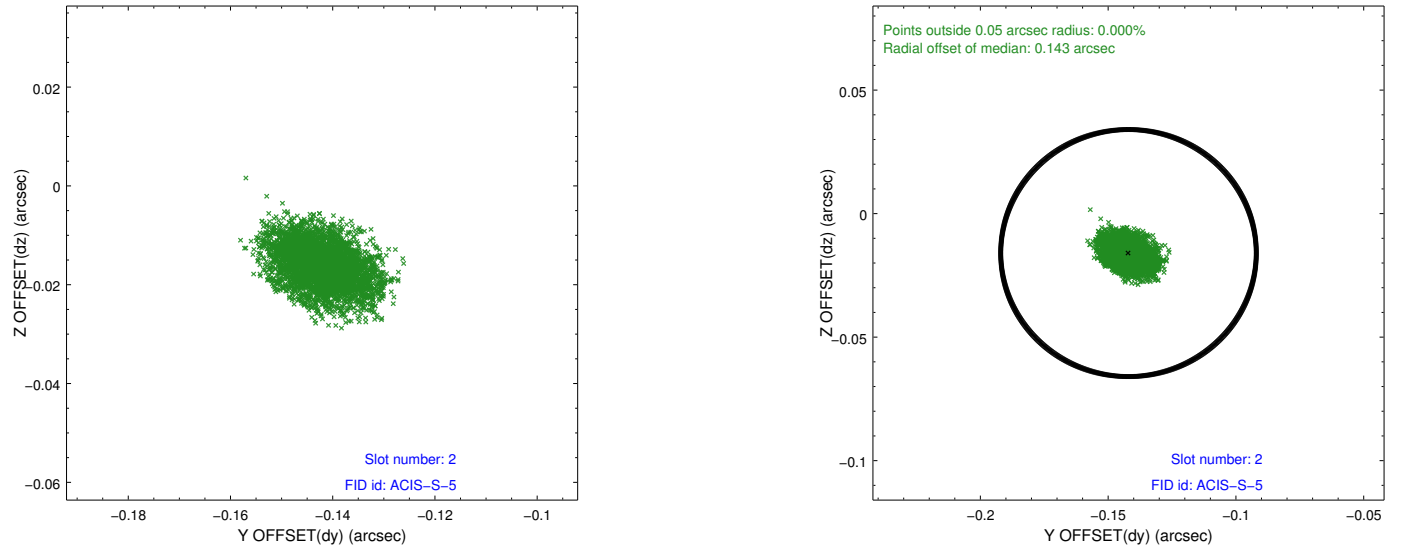
2.5.1 Slot 0



2.5.2 Slot 1



2.5.3 Slot 2



A Summary

A.1 Status

V&V Scientist	Jen Lauer
V&V Date (YYYY-MM-DD)	2012.04.19
V&V Edition	1
V&V Disposition and Status	OK
V&V Charge Time	17.1647001

A.2 Comments