

# V&V Reference Report

## L2 ASCDS Version : 8.4.4

Observation 7888 - L2 Version 2  
Chandra X-Ray Center

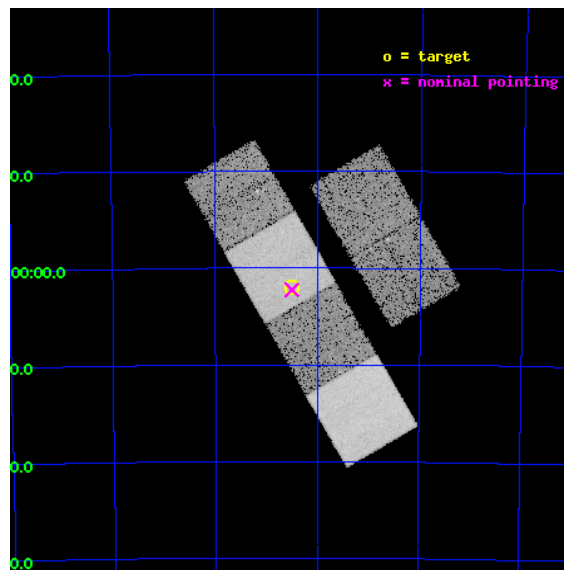
L2 Processing Date : Apr 25 2012

## Contents

<b>1</b>	<b>Front</b>	<b>2</b>
<b>2</b>	<b>OBI</b>	<b>3</b>
2.1	OBI . . . . .	3
2.1.1	Images . . . . .	3
2.1.2	Bias . . . . .	3
2.1.3	Parameters . . . . .	4
2.1.4	Events . . . . .	4
2.2	Compared Parameters . . . . .	5
2.3	Aspect . . . . .	6
2.4	Star Slots . . . . .	9
2.4.1	Slot 3 . . . . .	9
2.4.2	Slot 4 . . . . .	10
2.4.3	Slot 5 . . . . .	11
2.4.4	Slot 6 . . . . .	12
2.4.5	Slot 7 . . . . .	13
2.5	FID Slots . . . . .	14
2.5.1	Slot 0 . . . . .	14
2.5.2	Slot 1 . . . . .	15
2.5.3	Slot 2 . . . . .	16
<b>A</b>	<b>Summary</b>	<b>17</b>
A.1	Status . . . . .	17
A.2	Comments . . . . .	17

# 1 Front

seq_num	701551	Sequence number
obs_id	7888	Observation id
title	The Chandra-RBGS Survey of a Complete Sample of Luminous Infrared Galaxies	Proposal title
observer	Professor David Sanders	Principal investigator
object	ESO 60-IG016	Source name
dtcycle	0	&#160
cycle	P	events from which exps? Prim/Second/Both
ra_targ	133.124583	Observer's specified target RA [deg]
dec_targ	-69.032778	Observer's specified target Dec [deg]
ra_nom	133.12502027376	Nominal RA [deg]
dec_nom	-69.037650977497	Nominal Dec [deg]
roll_nom	239.93203662249	Nominal Roll [deg]
revision	2	Processing version of data
ontime	14870.399944663	Sum of GTIs [s]
livetime	14682.101986684	Livetime [s]
ontime2	14867.158964396	Sum of GTIs [s]
ontime3	14870.399944663	Sum of GTIs [s]
ontime5	14870.399944663	Sum of GTIs [s]
ontime6	14870.399944663	Sum of GTIs [s]
ontime7	14870.399944663	Sum of GTIs [s]
ontime8	14867.158964336	Sum of GTIs [s]
l2events	175470	Number of level 2 events

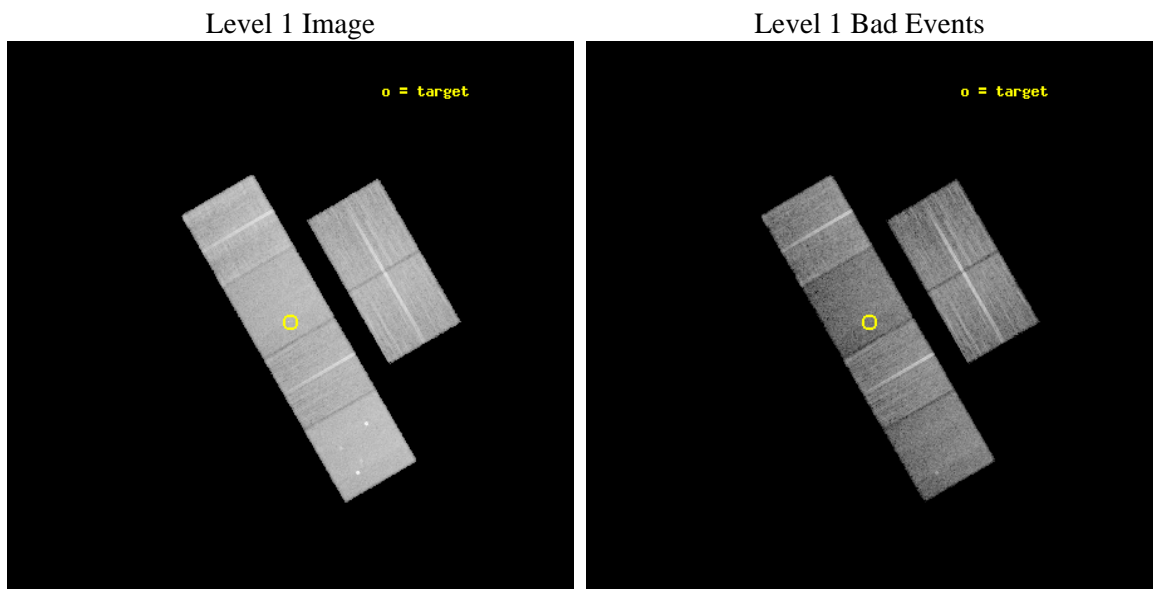




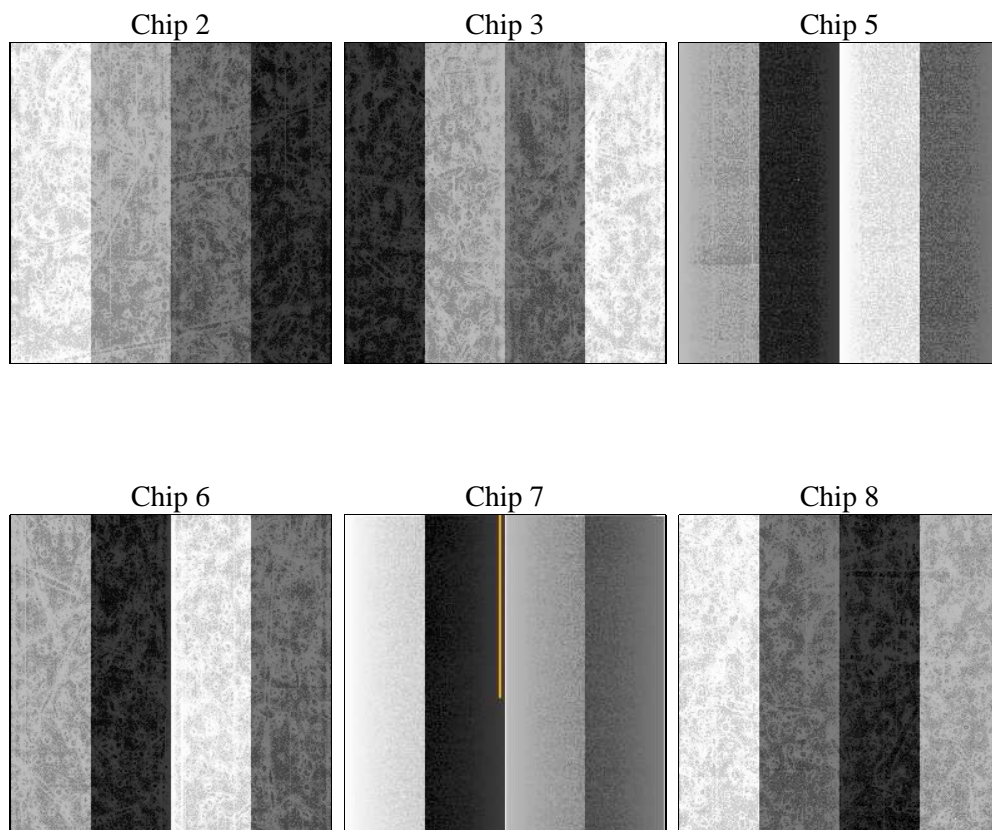
## 2 OBI

### 2.1 OBI

#### 2.1.1 Images



#### 2.1.2 Bias



### 2.1.3 Parameters

obi_num	0	Obi number	sched_exp_time	14828.924000	[s] Scheduled observation exposure time
ascdsver	8.4.4	Processing system revision	ontime	14870.399944663	Sum of GTIs [s]
caldsver	4.4.9	&#160	ontime2	14867.158964396	Sum of GTIs [s]
date	2012-04-25T10:45:41	Date and time of file creation	ontime3	14870.399944663	Sum of GTIs [s]
revision	2	Processing version of data	ontime5	14870.399944663	Sum of GTIs [s]
			ontime6	14870.399944663	Sum of GTIs [s]
			ontime7	14870.399944663	Sum of GTIs [s]
			ontime8	14867.158964336	Sum of GTIs [s]
			l1events	809238	Number of level 1 events

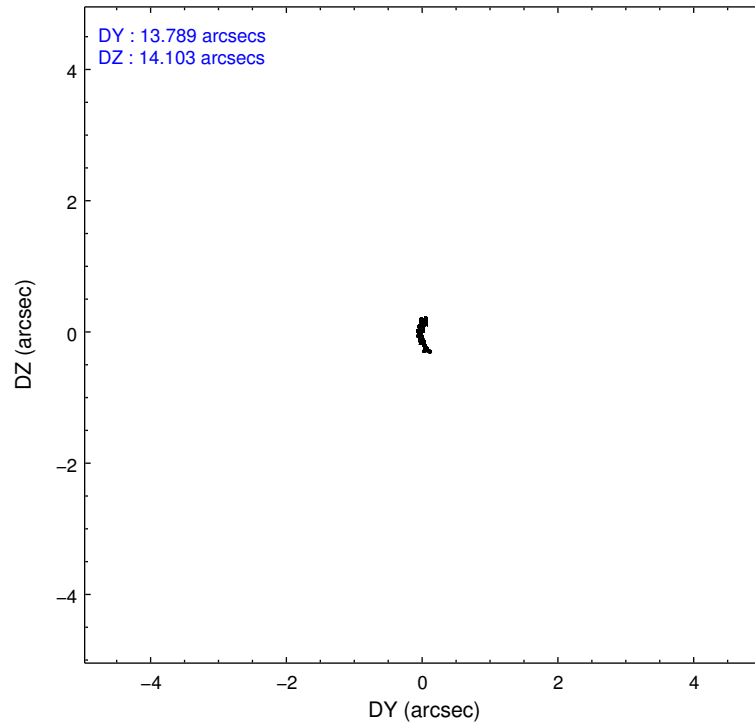
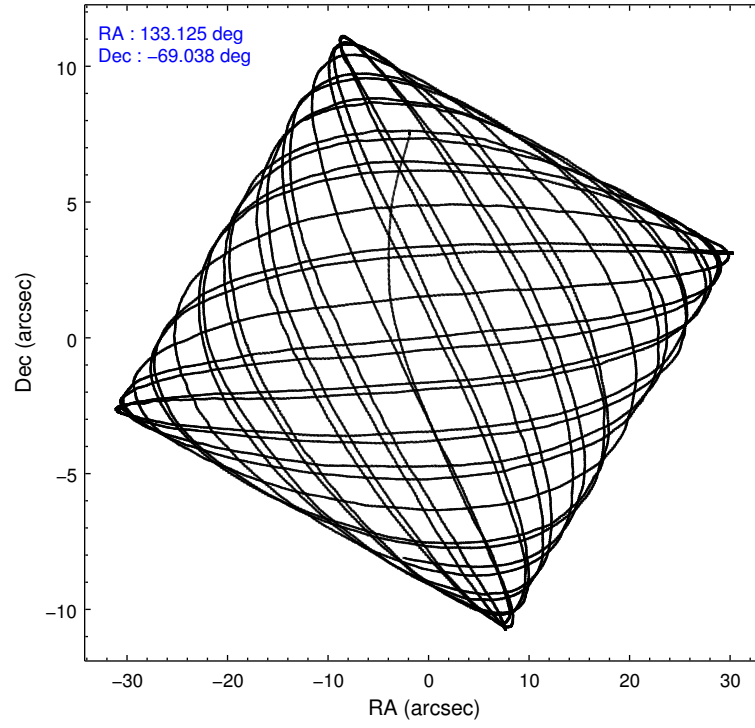
### 2.1.4 Events

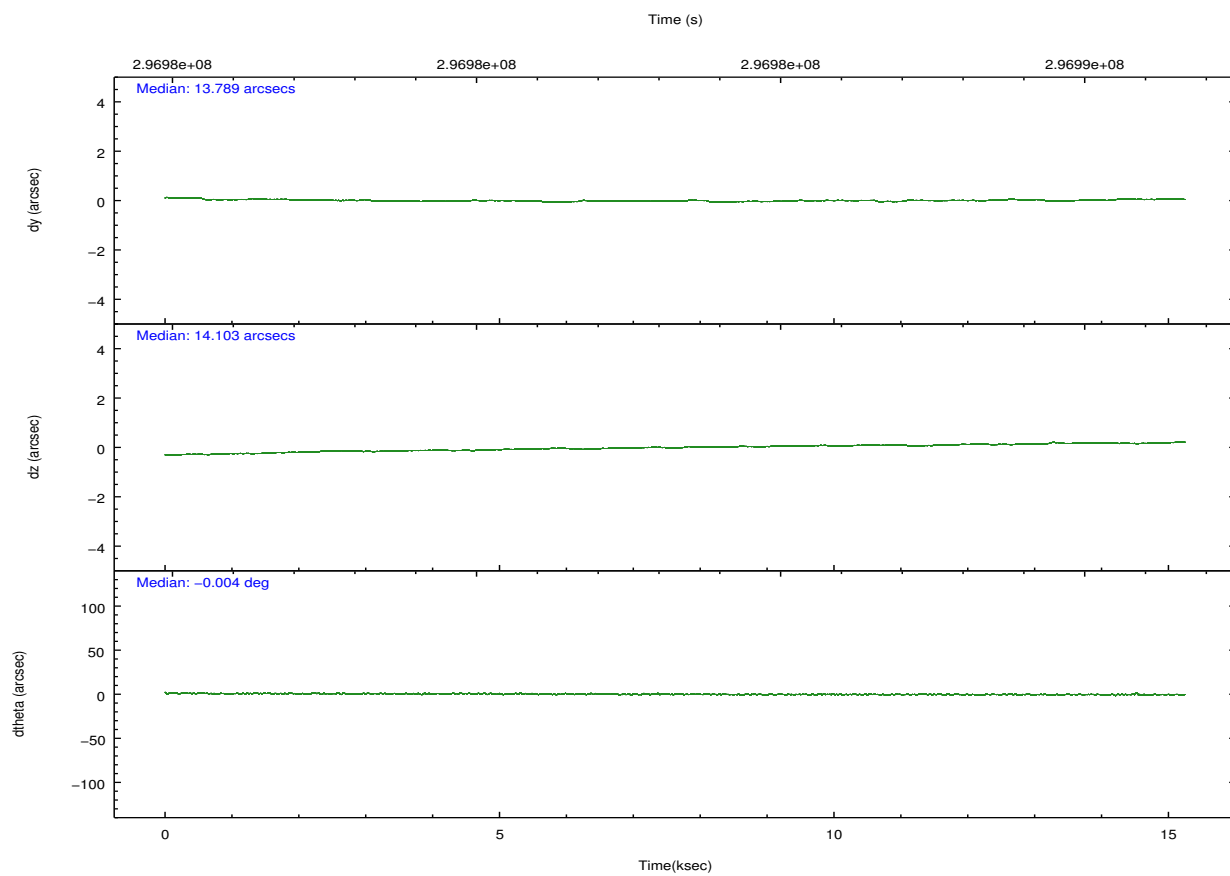
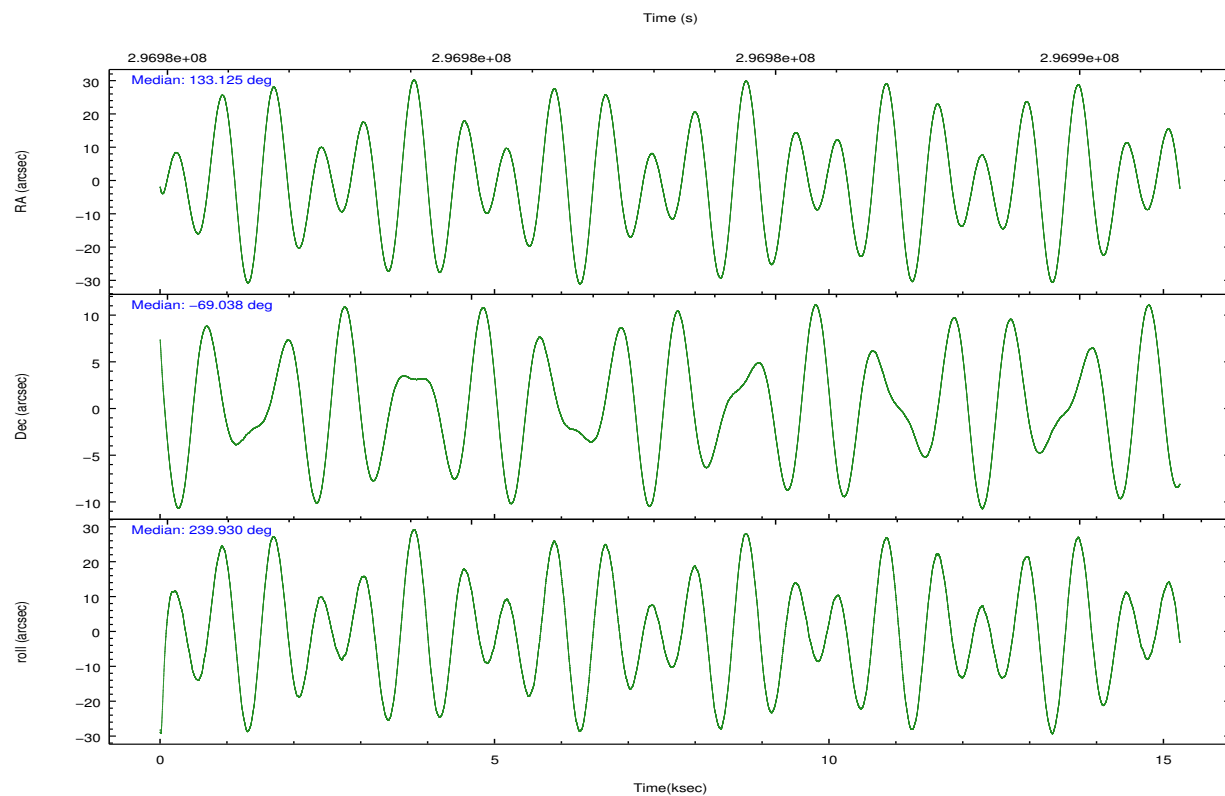
	ccd 2	ccd 3	ccd 5	ccd 6	ccd 7	ccd 8		ccd 2	ccd 3	ccd 5	ccd 6	ccd 7	ccd 8
level 1 events	127892	115789	162887	122141	131415	149114	grade 0 events	4201	3853	8855	4457	5622	10964
rejected events	116185	104871	81462	109708	71667	113255		3%	3%	5%	3%	4%	7%
rejected %	90%	90%	50%	89%	54%	75%	grade 1 events	70	97	408	51	175	135
								0%	0%	0%	0%	0%	0%
							grade 2 events	2831	2386	23788	2703	11911	7993
								2%	2%	14%	2%	9%	5%
							grade 3 events	1287	1264	3351	1316	5644	3973
								1%	1%	2%	1%	4%	2%
							grade 4 events	1260	1251	3294	1335	5359	3659
								0%	1%	2%	1%	4%	2%
							grade 5 events	3953	4584	12777	4668	13918	6845
								3%	3%	7%	3%	10%	4%
							grade 6 events	2137	2167	42164	2627	31238	9274
								1%	1%	25%	2%	23%	6%
							grade 7 events	112153	100187	68250	104984	57548	106271
								87%	86%	41%	85%	43%	71%

## 2.2 Compared Parameters

Parameter	Planned	Actual	Parameter	Planned	Actual
Instrument	ACIS	ACIS	Obspar format version number	7	7
Detector	ACIS-235678	ACIS-235678	Obspar file type	PREDICTED	ACTUAL
Grating	NONE	NONE	Obspar update status	NONE	UPDATED
Data mode	VFAINT	VFAINT	CCD I0 on	N	N
Observation mode	POINTING	POINTING	CCD I1 on	N	N
[deg] Pointing RA	133.124016	133.1250202737637	CCD I2 on	O1	Y
[deg] Pointing Dec	-69.010284	-69.03765097749664	CCD I3 on	O2	Y
[deg] Pointing Roll	239.774490	239.9320366224883	CCD S0 on	N	N
[mm] SIM focus pos	-0.684267	-0.6828225247311905	CCD S1 on	O3	Y
[mm] SIM defocus	0	0.001444936568705701	CCD S2 on	O5	Y
[mm] SIM translation stage pos	-190.132523	-190.1425803651734	CCD S3 on	Y	Y
[mm] SIM translation stage offset	0	0.01005778216563158	CCD S4 on	O4	Y
[s] Observation start time (MET)	296976066.184000	296974940.52257	CCD S5 on	N	N
Observation start date	2007-05-31T05:20:01	2007-05-31T05:02:20	Number of optional ACIS chips dropped	0	0
[s] Observation end time (MET)	296990895.184000	296991114.51084	On-chip summing requested	N	N
Observation end date	2007-05-31T09:27:10	2007-05-31T09:31:54	Subarray requested	NONE	NONE
Read mode	TIMED	TIMED	Alternating exposures requested	N	N
			[s] Primary exposure time	0.000000	3.2

## 2.3 Aspect



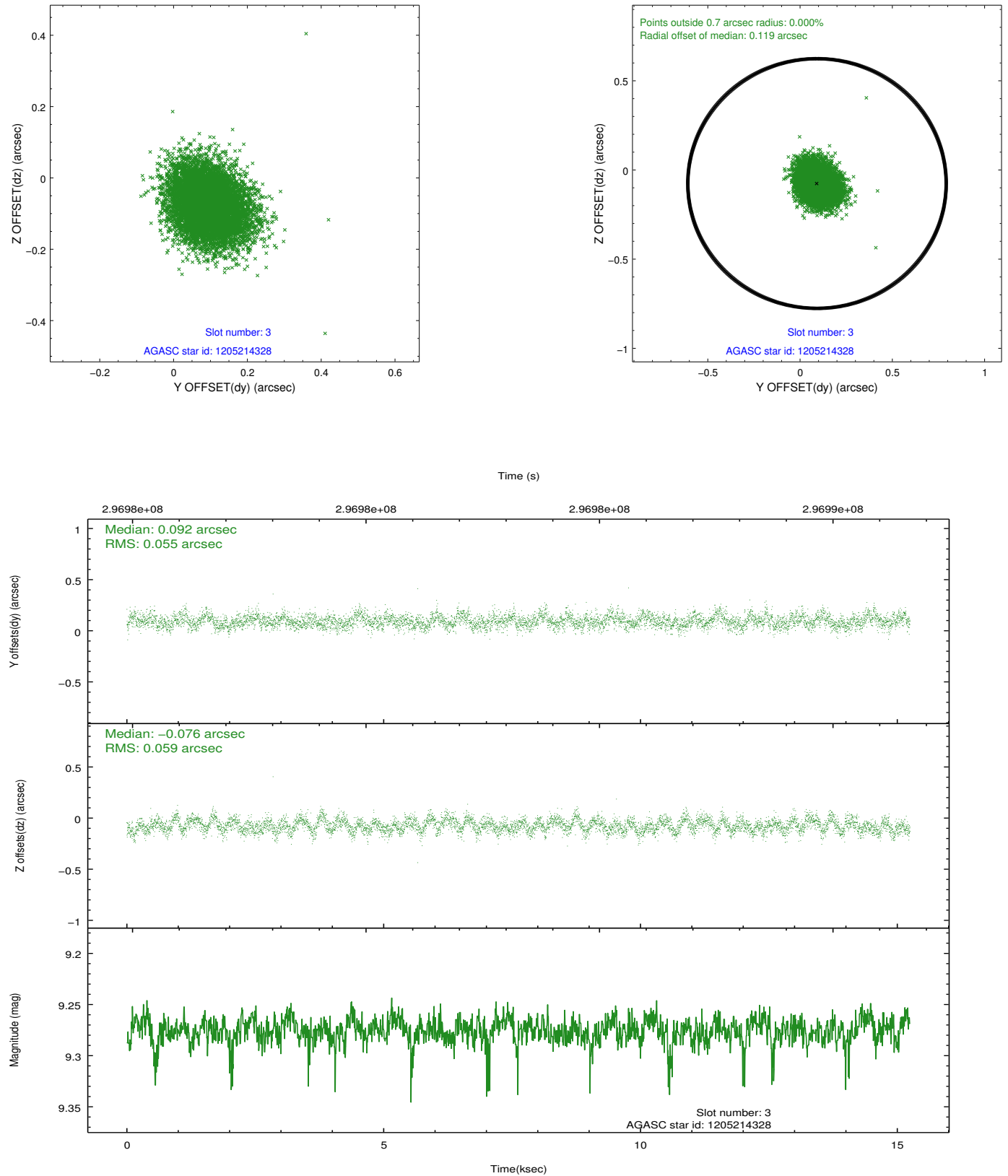


### Slot Statistics

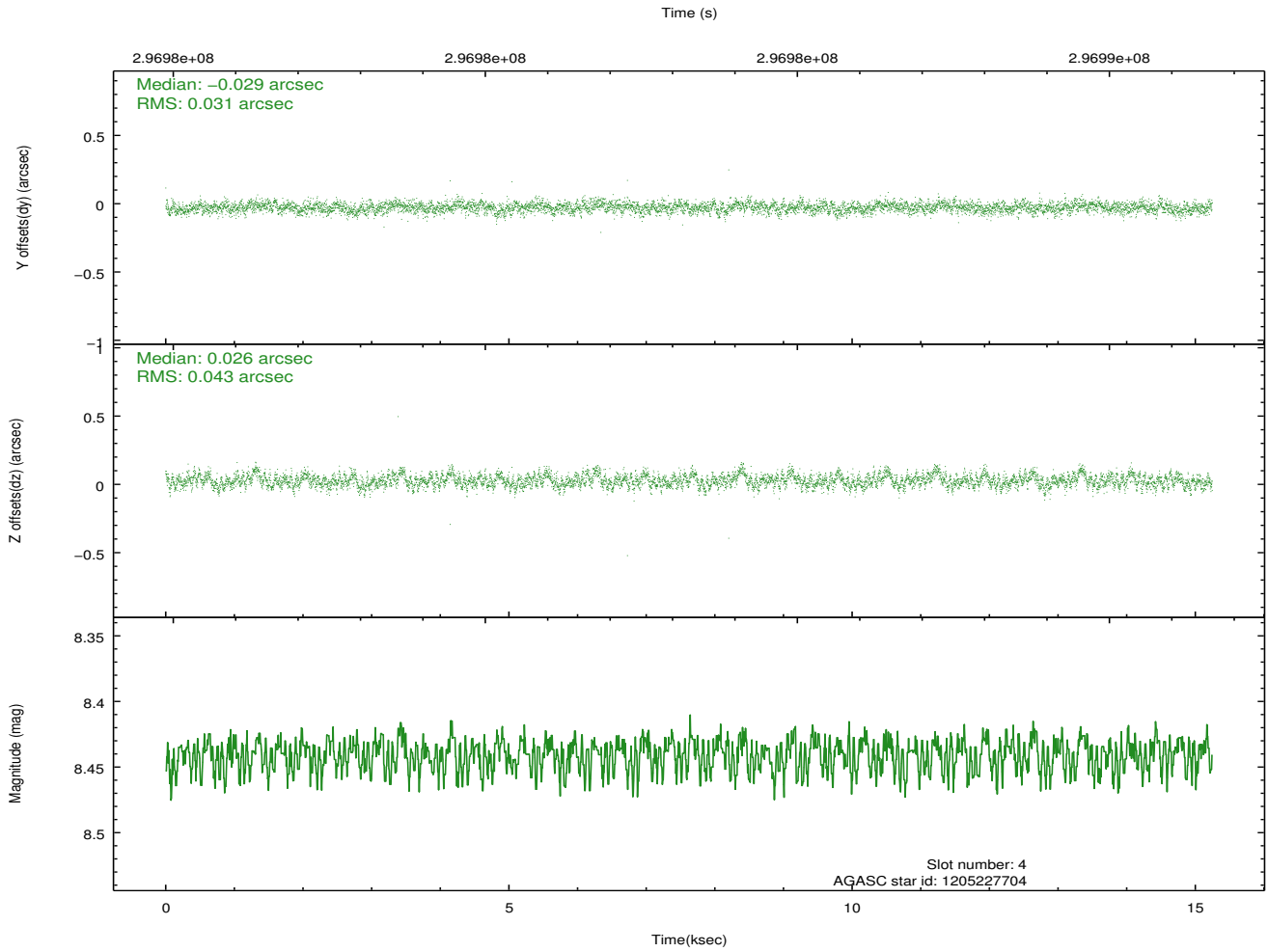
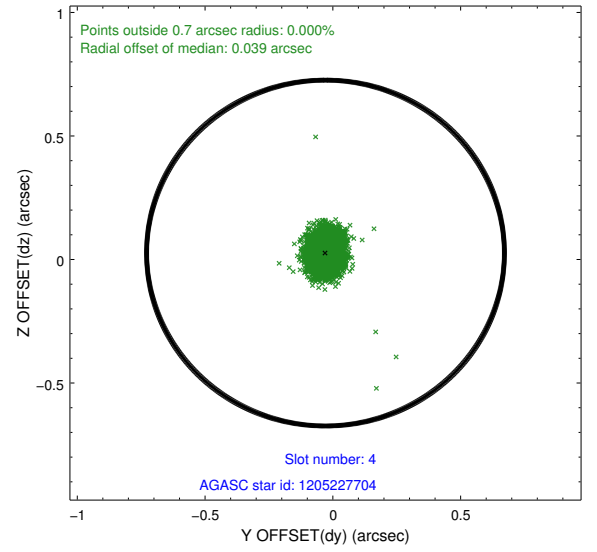
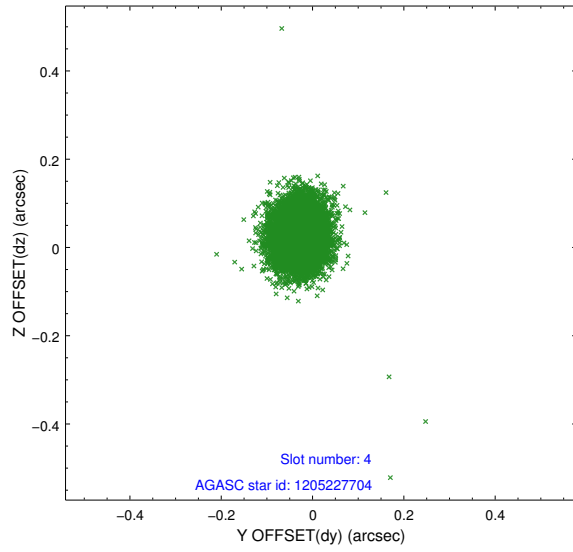
slot	status	id	mag	n_pts	med_dy	med_dz	dr1	dr2	ra	dec	mean_y	mean_z
0	FID	ACIS-S-2	7.09	3717	-0.057	-0.055	0.008	0.014	0.000000	0.000000	-766.78	-1735.45
1	FID	ACIS-S-4	7.19	3719	0.195	0.042	0.007	0.013	0.000000	0.000000	2146.61	172.84
2	FID	ACIS-S-5	7.22	3718	-0.170	0.021	0.008	0.013	0.000000	0.000000	-1819.36	166.81
3	GUIDE	1205214328	9.28	7430	0.092	-0.076	0.086	0.140	134.661768	-68.830160	-1544.79	1413.31
4	GUIDE	1205227704	8.44	7435	-0.029	0.026	0.055	0.090	132.381253	-68.520308	-1026.17	-1730.73
5	GUIDE	1205232320	8.05	7437	-0.047	-0.011	0.055	0.090	132.084382	-69.372733	1800.80	-476.80
6	GUIDE	1205232848	8.86	7427	0.114	-0.004	0.092	0.142	133.602577	-68.538771	-1781.33	-308.62
7	GUIDE	1205753664	8.38	7434	-0.136	0.061	0.052	0.086	132.312845	-69.439508	1857.01	-104.77

## 2.4 Star Slots

### 2.4.1 Slot 3

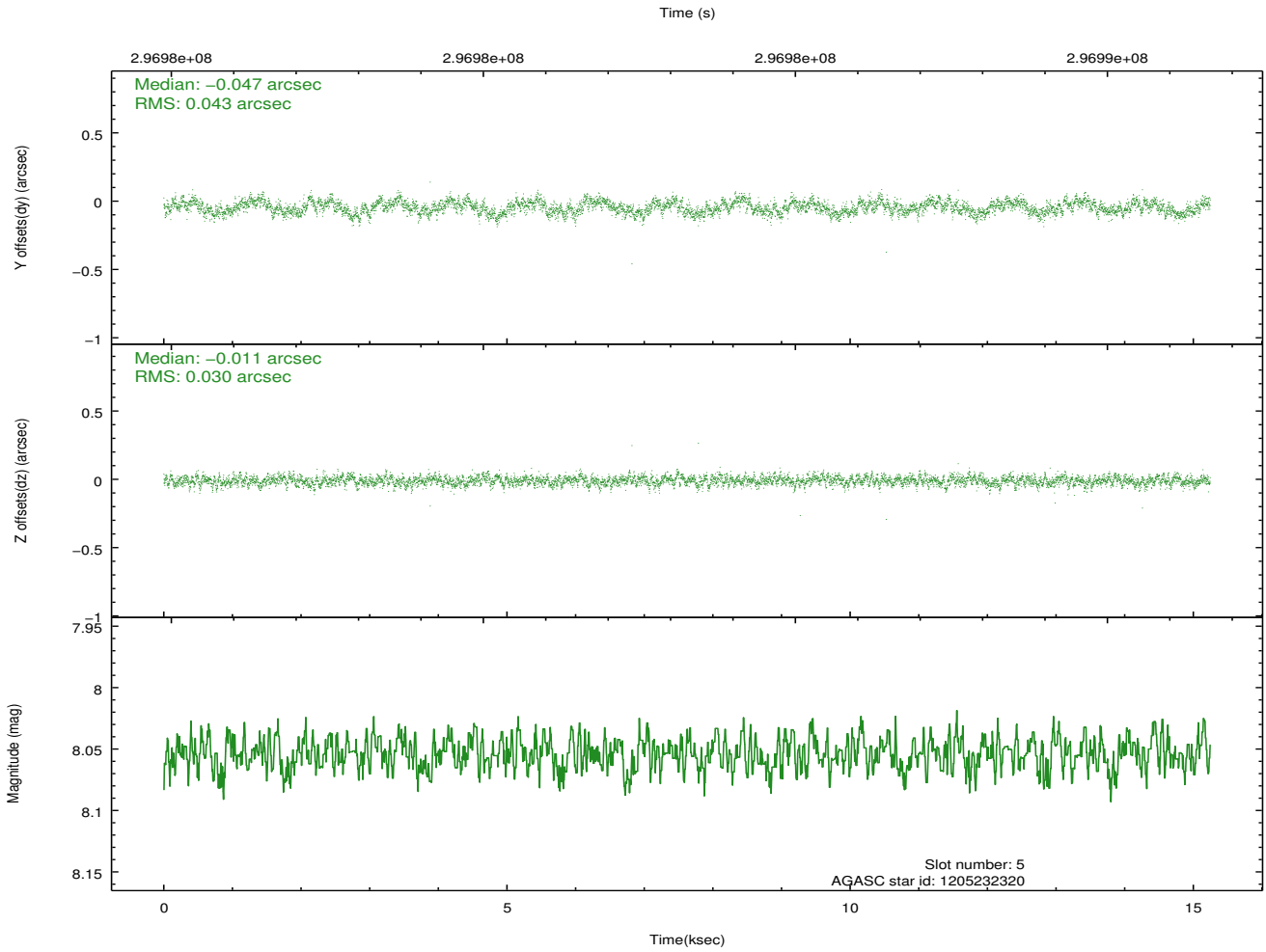
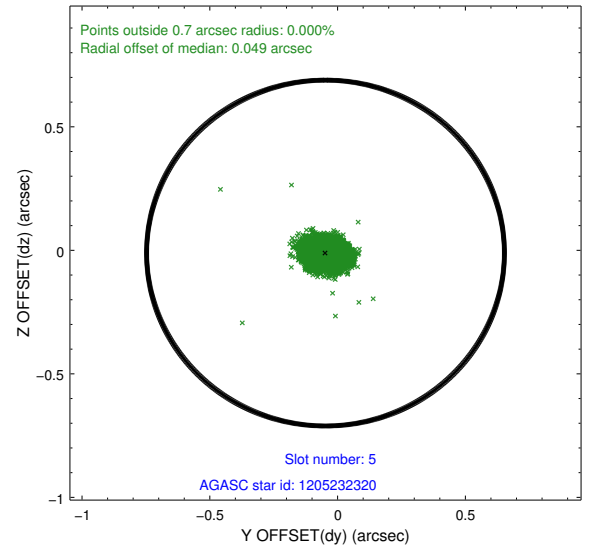
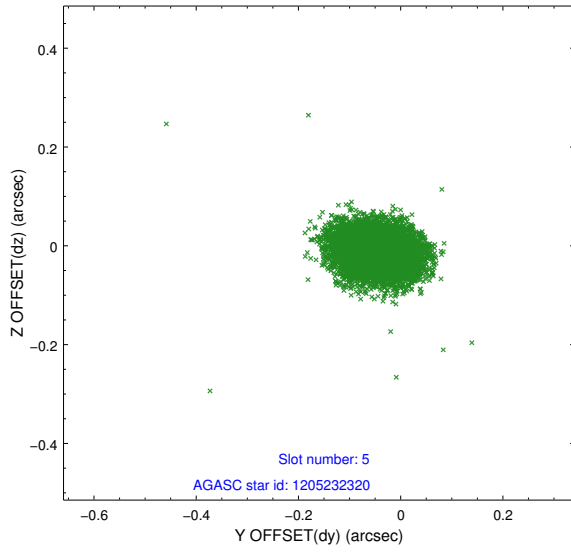


## 2.4.2 Slot 4

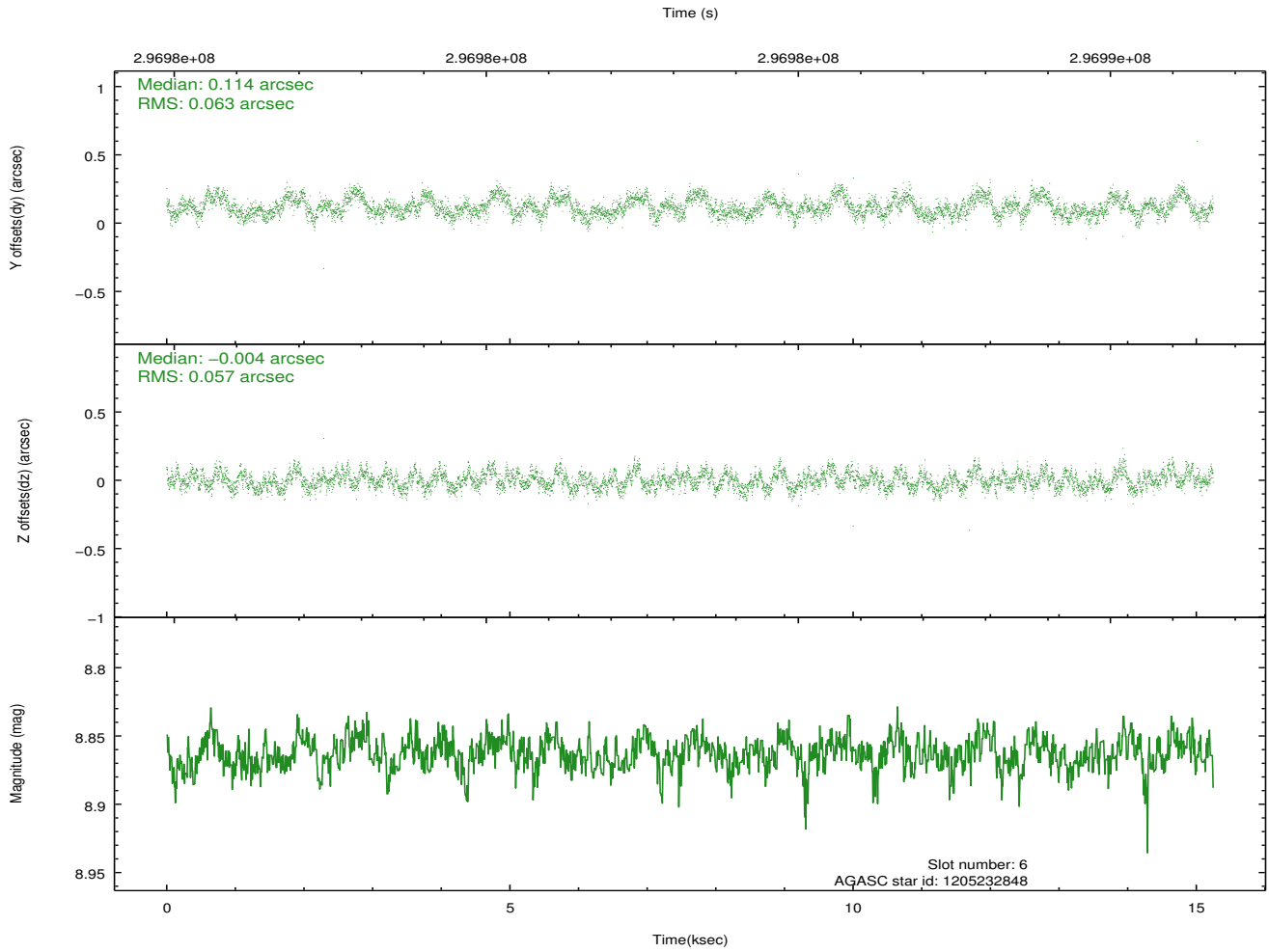
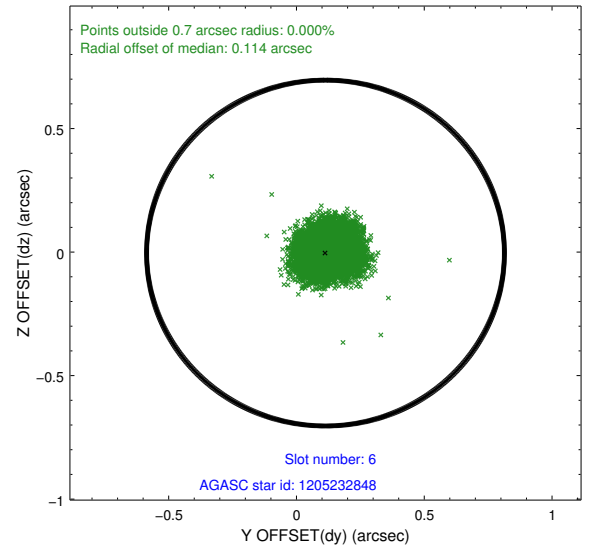
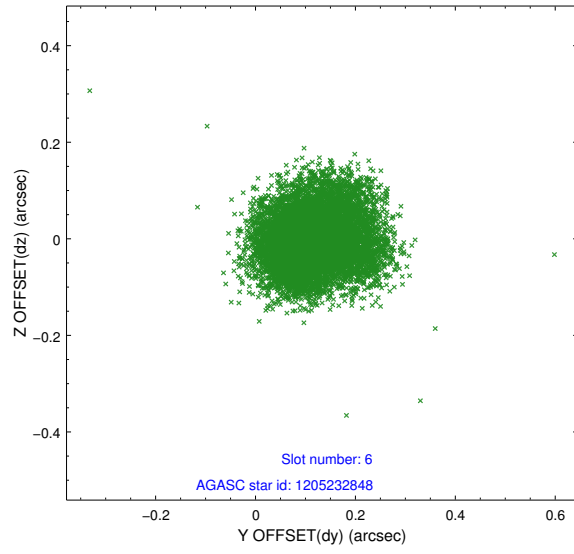




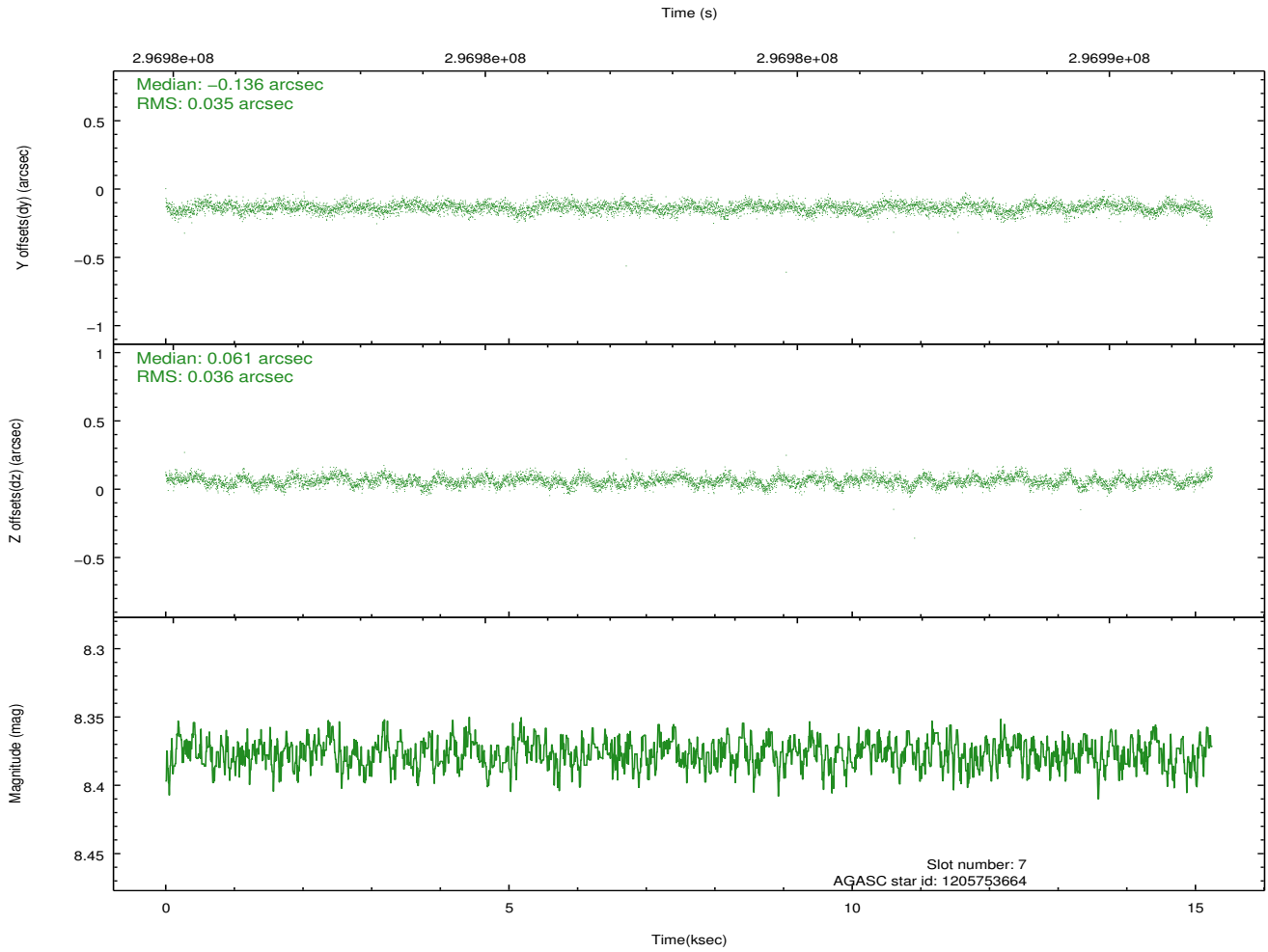
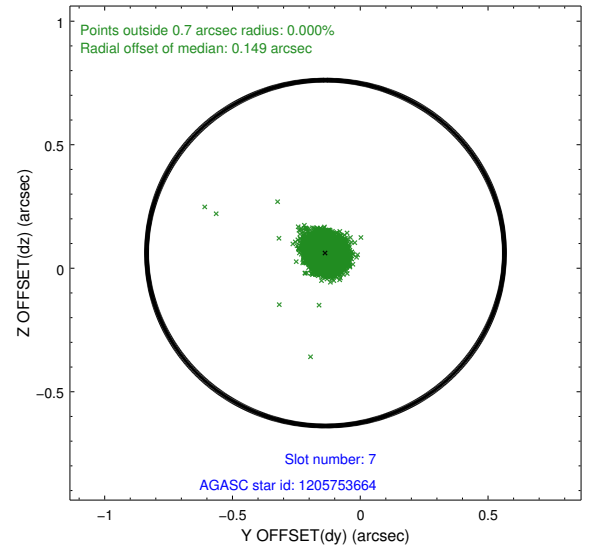
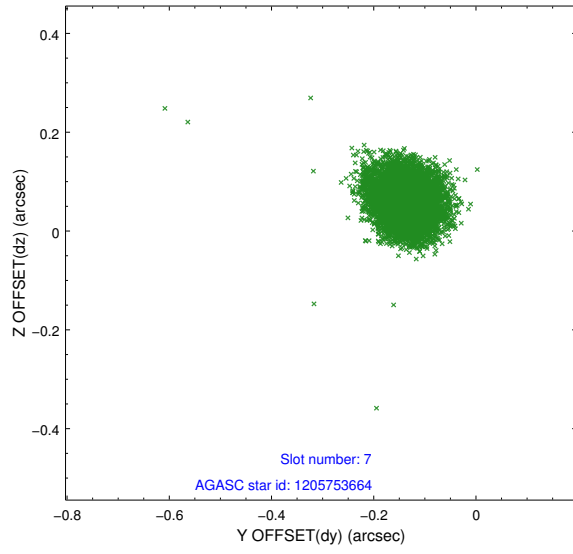
### 2.4.3 Slot 5



## 2.4.4 Slot 6

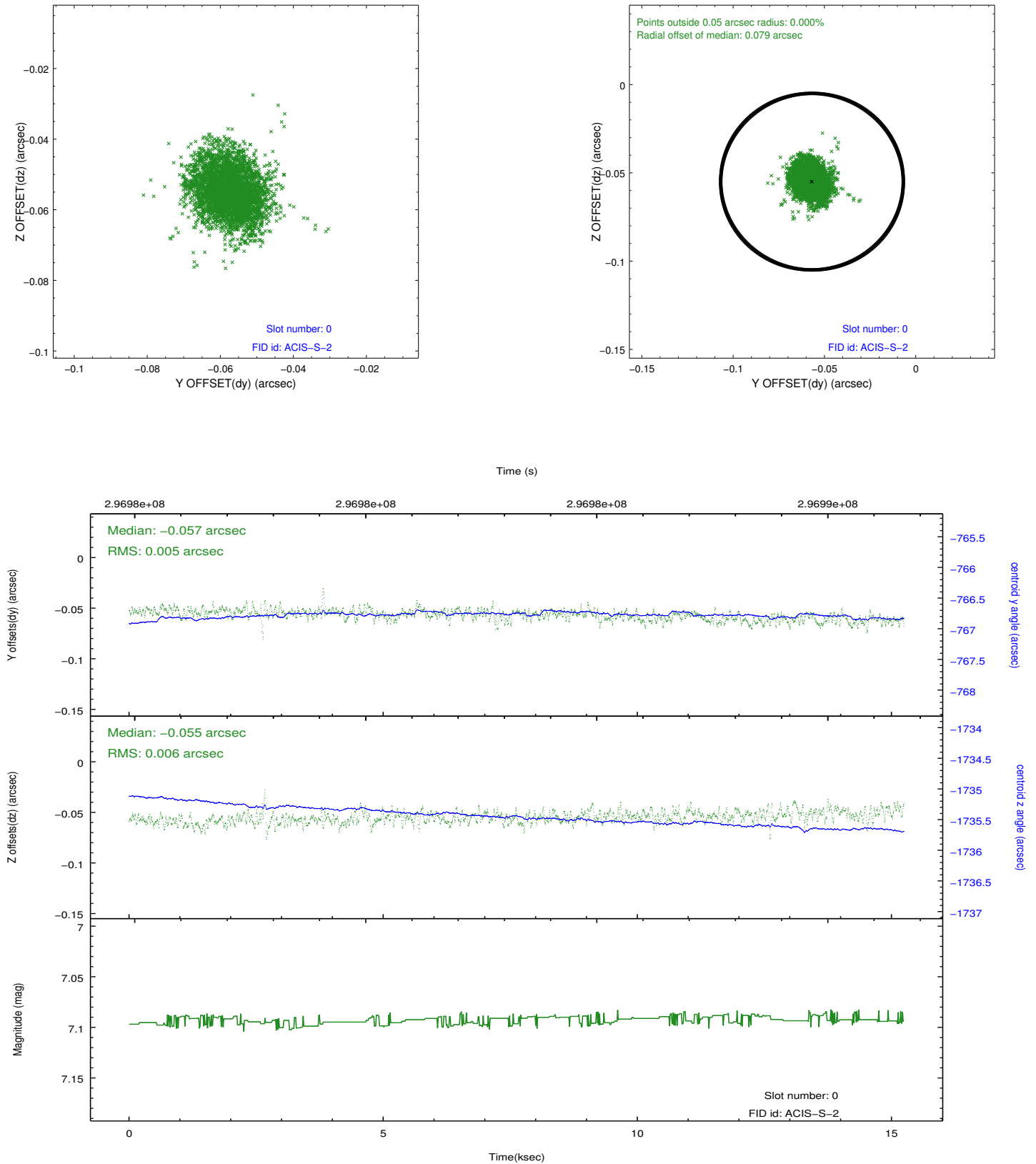


## 2.4.5 Slot 7

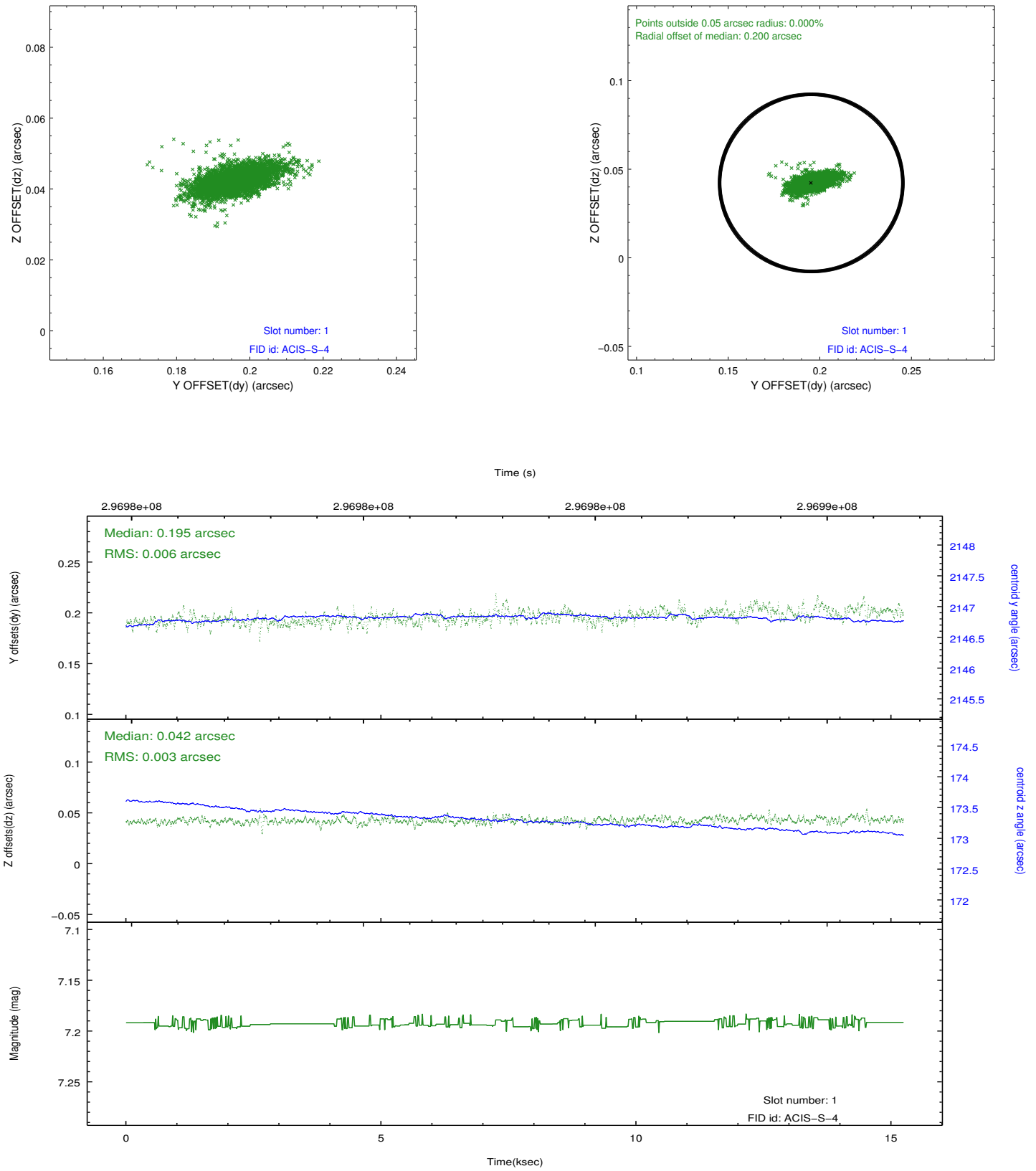


## 2.5 FID Slots

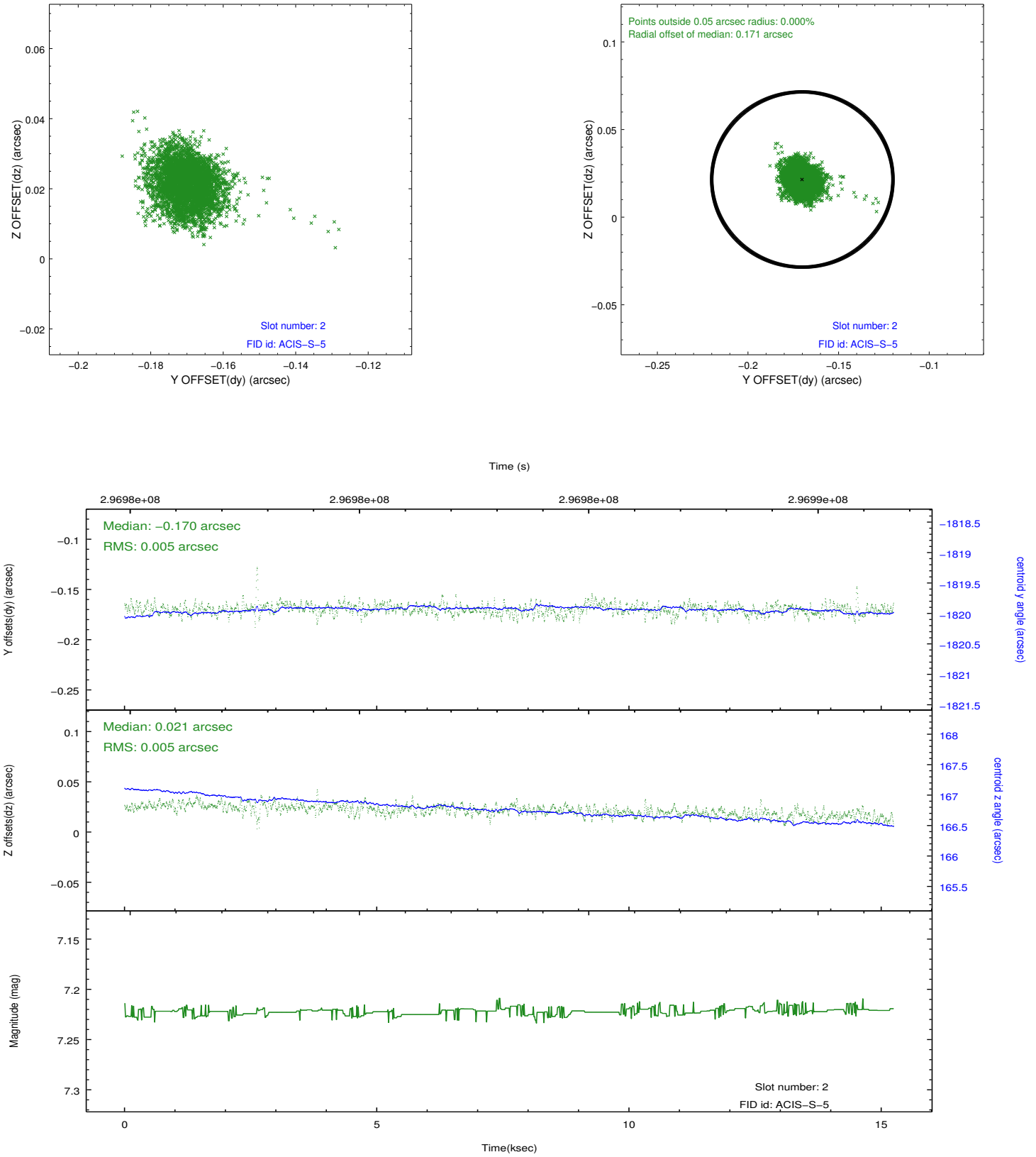
### 2.5.1 Slot 0



## 2.5.2 Slot 1



### 2.5.3 Slot 2



## A Summary

### A.1 Status

V&V Scientist	Jen Lauer
V&V Date (YYYY-MM-DD)	2012.04.25
V&V Edition	1
V&V Disposition and Status	OK
V&V Charge Time	14.8703999

### A.2 Comments

X-ray source located at 08:52:32.1, -69:01:55.37. Observer specified coordinates as 08:52:29.90,-69:01:58.00.