

# V&V Reference Report

## L2 ASCDS Version : 8.4.3.1

Observation 6988 - L2 Version 2  
Chandra X-Ray Center

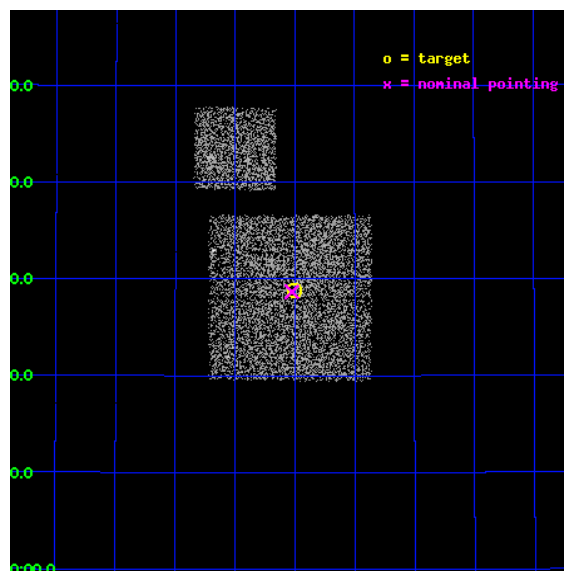
L2 Processing Date : Apr 12 2012

## Contents

<b>1</b>	<b>Front</b>	<b>2</b>
<b>2</b>	<b>OBI</b>	<b>3</b>
2.1	OBI . . . . .	3
2.1.1	Images . . . . .	3
2.1.2	Bias . . . . .	3
2.1.3	Parameters . . . . .	4
2.1.4	Events . . . . .	4
2.2	Compared Parameters . . . . .	5
2.3	Aspect . . . . .	6
2.4	Star Slots . . . . .	9
2.4.1	Slot 3 . . . . .	9
2.4.2	Slot 4 . . . . .	10
2.4.3	Slot 5 . . . . .	11
2.4.4	Slot 6 . . . . .	12
2.4.5	Slot 7 . . . . .	13
2.5	FID Slots . . . . .	14
2.5.1	Slot 0 . . . . .	14
2.5.2	Slot 1 . . . . .	15
2.5.3	Slot 2 . . . . .	16
<b>A</b>	<b>Summary</b>	<b>17</b>
A.1	Status . . . . .	17
A.2	Comments . . . . .	17

# 1 Front

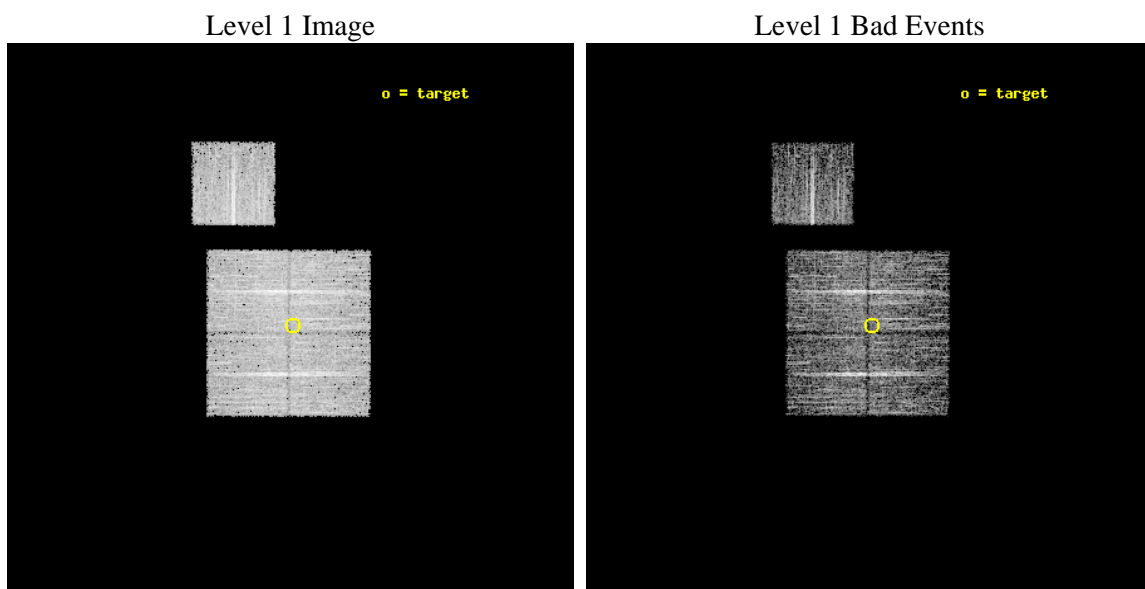
seq_num	900404	Sequence number
obs_id	6988	Observation id
title	Chandra Large Scale Survey of the NOAO Bootes Deep Field (A)	Propo
observer	Dr. Stephen Murray	Principal investigator
object	Bootes2 10	Source name
dtcycle	0	&#160
cycle	P	events from which exps? Prim/Second/Both
ra_targ	217.376271	Observer's specified target RA [deg]
dec_targ	33.479717	Observer's specified target Dec [deg]
ra_nom	217.38135729896	Nominal RA [deg]
dec_nom	33.477923924893	Nominal Dec [deg]
roll_nom	0.20586477334224	Nominal Roll [deg]
revision	2	Processing version of data
ontime	4770.9000366926	Sum of GTIs [s]
livetime	4708.5647154277	Livetime [s]
ontime0	4767.7590664029	Sum of GTIs [s]
ontime1	4770.9000366926	Sum of GTIs [s]
ontime2	4770.9000366926	Sum of GTIs [s]
ontime3	4770.9000366926	Sum of GTIs [s]
ontime6	4770.9000366926	Sum of GTIs [s]
l2events	13551	Number of level 2 events



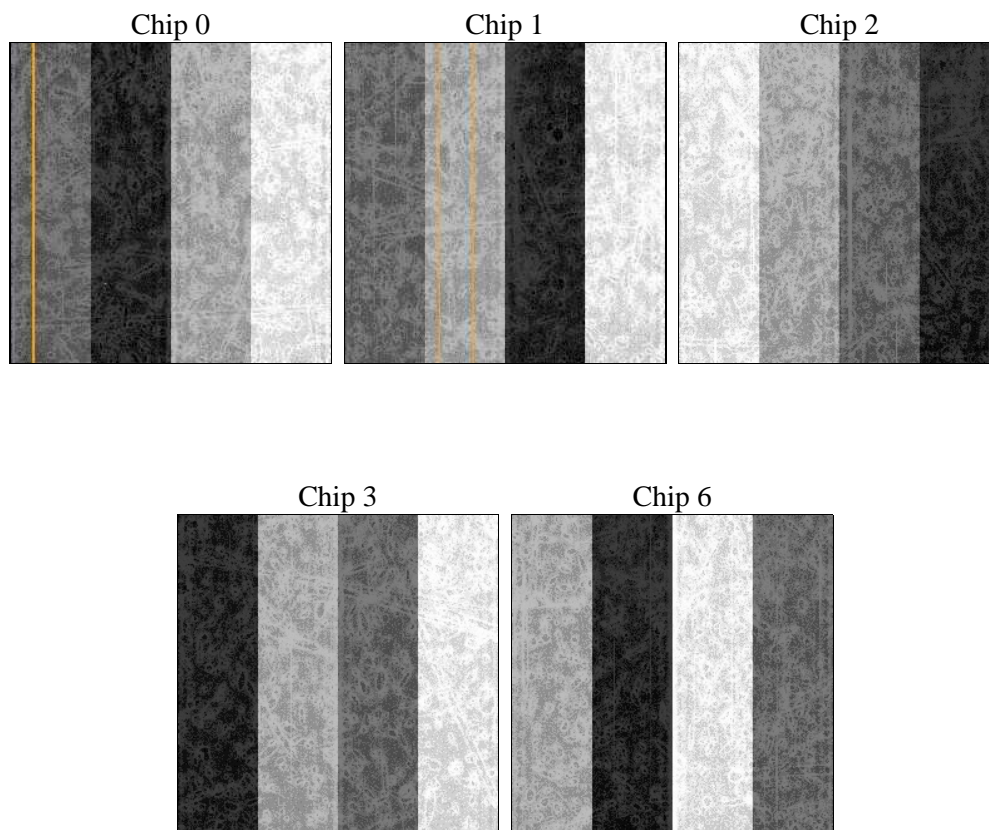
## 2 OBI

### 2.1 OBI

#### 2.1.1 Images



#### 2.1.2 Bias



### 2.1.3 Parameters

obi_num	0	Obi number	sched_exp_time	5000.000000	[s] Scheduled observation exposure time
ascdsver	8.4.3.1	Processing system revision	ontime	4770.9000366926	Sum of GTIs [s]
caldsver	4.4.9	&#160	ontime0	4767.7590664029	Sum of GTIs [s]
date	2012-04-12T23:21:05	Date and time of file creation	ontime1	4770.9000366926	Sum of GTIs [s]
revision	2	Processing version of data	ontime2	4770.9000366926	Sum of GTIs [s]
			ontime3	4770.9000366926	Sum of GTIs [s]
			ontime6	4770.9000366926	Sum of GTIs [s]
			l1events	173637	Number of level 1 events

### 2.1.4 Events

	ccd 0	ccd 1	ccd 2	ccd 3	ccd 6
level 1 events	33550	31788	38082	36414	33803
rejected events	30257	28358	34698	33209	30420
rejected %	90%	89%	91%	91%	89%

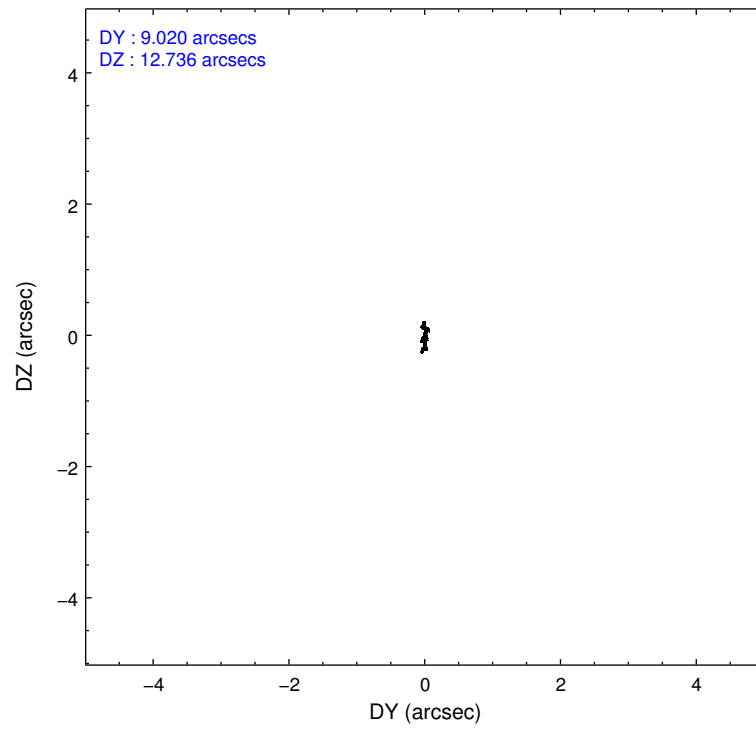
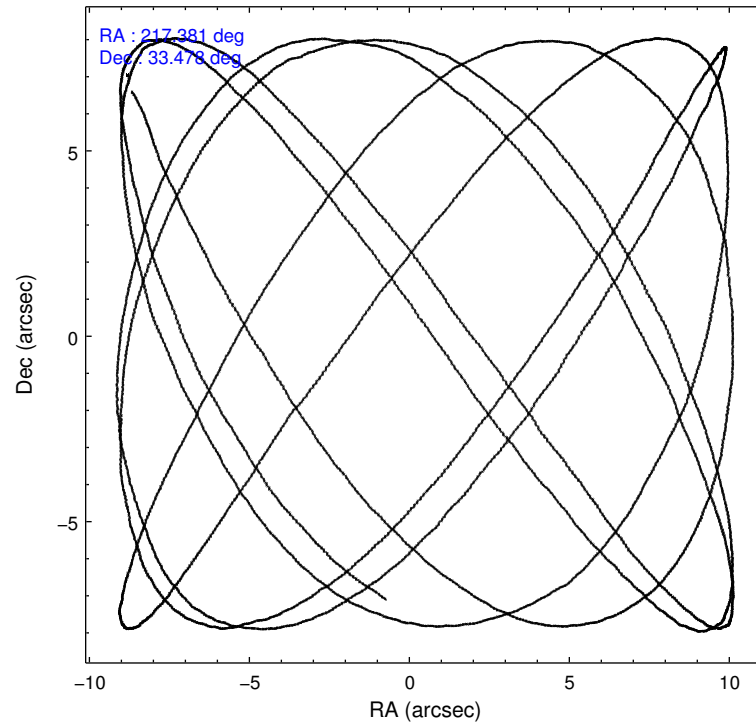
	ccd 0	ccd 1	ccd 2	ccd 3	ccd 6
grade 0 events	1223	1150	1222	1168	1248
	3%	3%	3%	3%	3%
grade 1 events	21	13	22	27	16
	0%	0%	0%	0%	0%
grade 2 events	791	709	823	682	735
	2%	2%	2%	1%	2%
grade 3 events	379	396	352	364	367
	1%	1%	0%	0%	1%
grade 4 events	352	437	366	351	392
	1%	1%	0%	0%	1%
grade 5 events	957	1129	961	1199	1101
	2%	3%	2%	3%	3%
grade 6 events	550	746	623	644	644
	1%	2%	1%	1%	1%
grade 7 events	29277	27208	33713	31979	29300
	87%	85%	88%	87%	86%

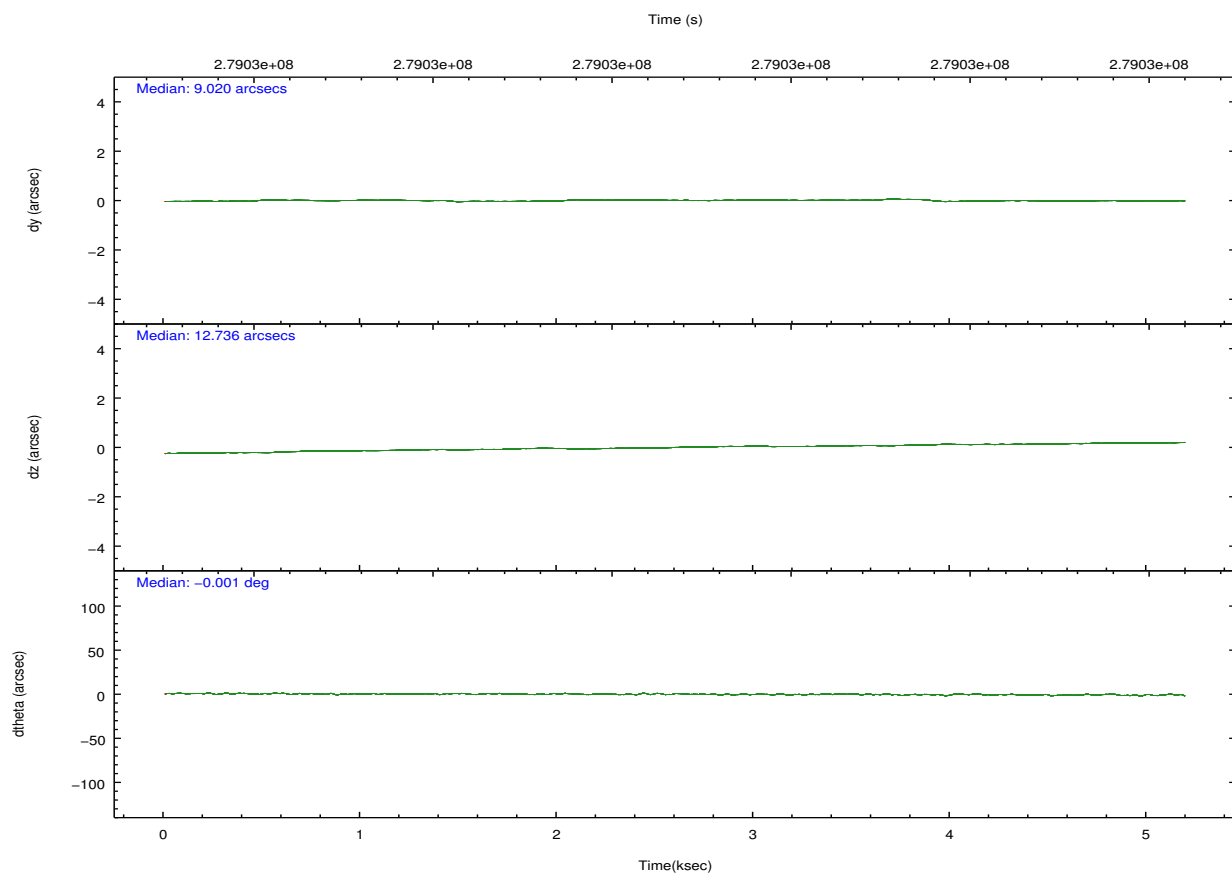
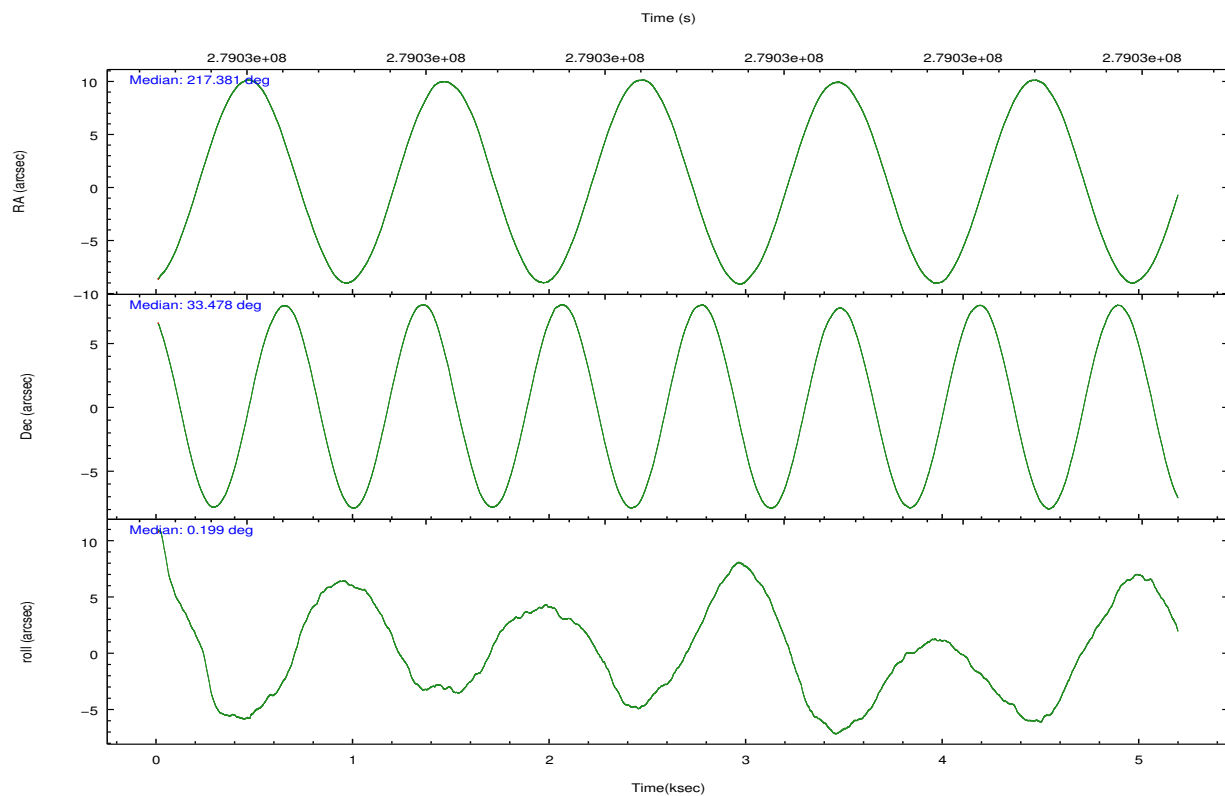


## 2.2 Compared Parameters

Parameter	Planned	Actual	Parameter	Planned	Actual
Instrument	ACIS	ACIS	Obspar format version number	7	7
Detector	ACIS-01236	ACIS-01236	Obspar file type	PREDICTED	ACTUAL
Grating	NONE	NONE	Obspar update status	NONE	UPDATED
Data mode	VFAINT	VFAINT	Number of optional ACIS chips dropped	0	0
Observation mode	POINTING	POINTING	On-chip summing requested	N	N
[deg] Pointing RA	217.353099	217.381357298964	Subarray requested	NONE	NONE
[deg] Pointing Dec	33.464042	33.4779239248934	Alternating exposures requested	N	N
[deg] Pointing Roll	0.012781	0.205864773342236	[s] Primary exposure time	0.000000	3.1
[mm] SIM focus pos	-0.782348	-0.7809083437167272			
[mm] SIM defocus	0	0.001439871863259334			
[mm] SIM translation stage pos	-233.592463	-233.5874344608287			
[mm] SIM translation stage offset	0	-0.005018542100998502			
[s] Observation start time (MET)	279025960.184000	279025584.00757			
Observation start date	2006-11-04T11:11:35	2006-11-04T11:06:24			
[s] Observation end time (MET)	279030960.184000	279031094.40784			
Observation end date	2006-11-04T12:34:55	2006-11-04T12:38:14			
Read mode	TIMED	TIMED			

## 2.3 Aspect



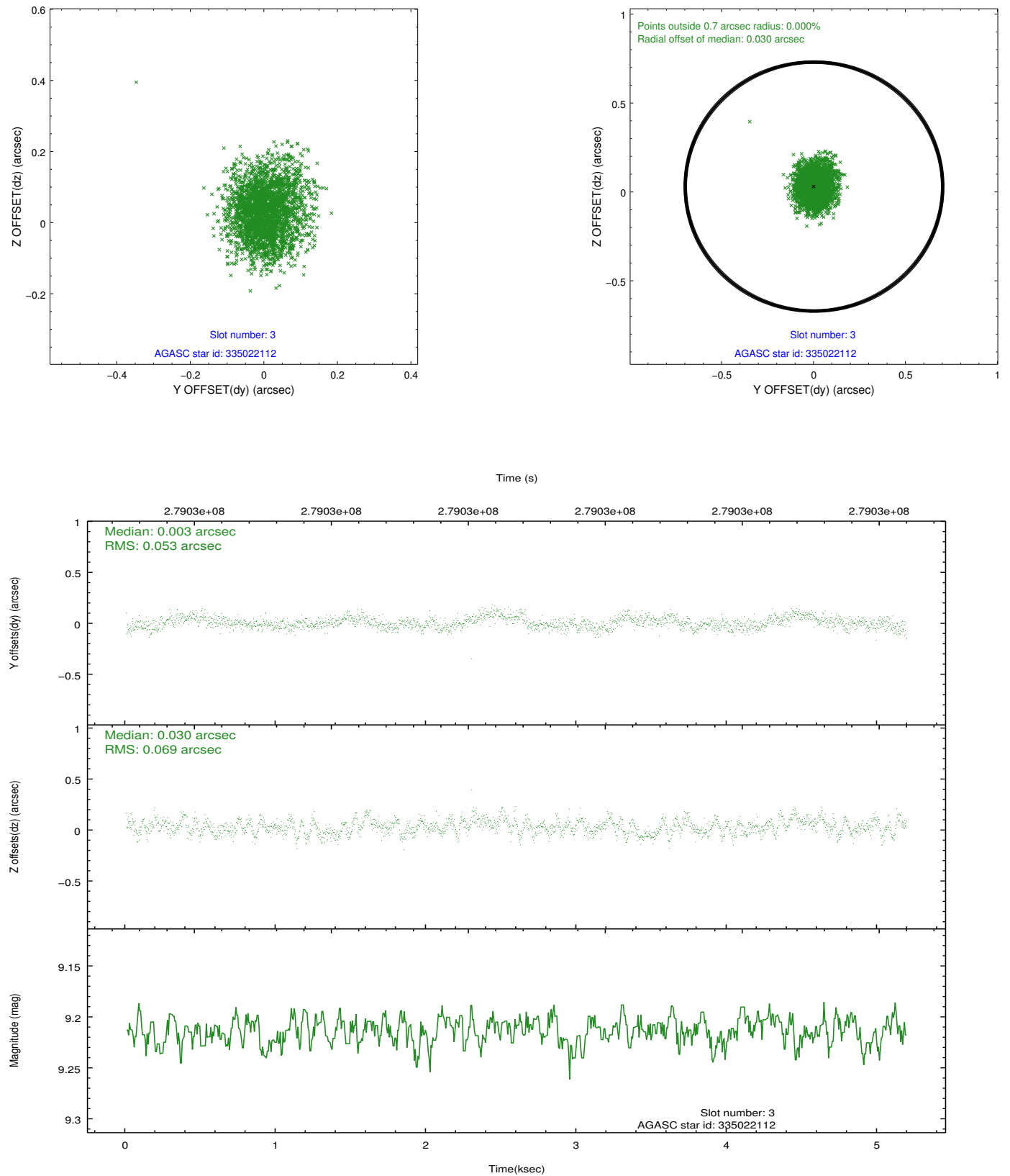


### Slot Statistics

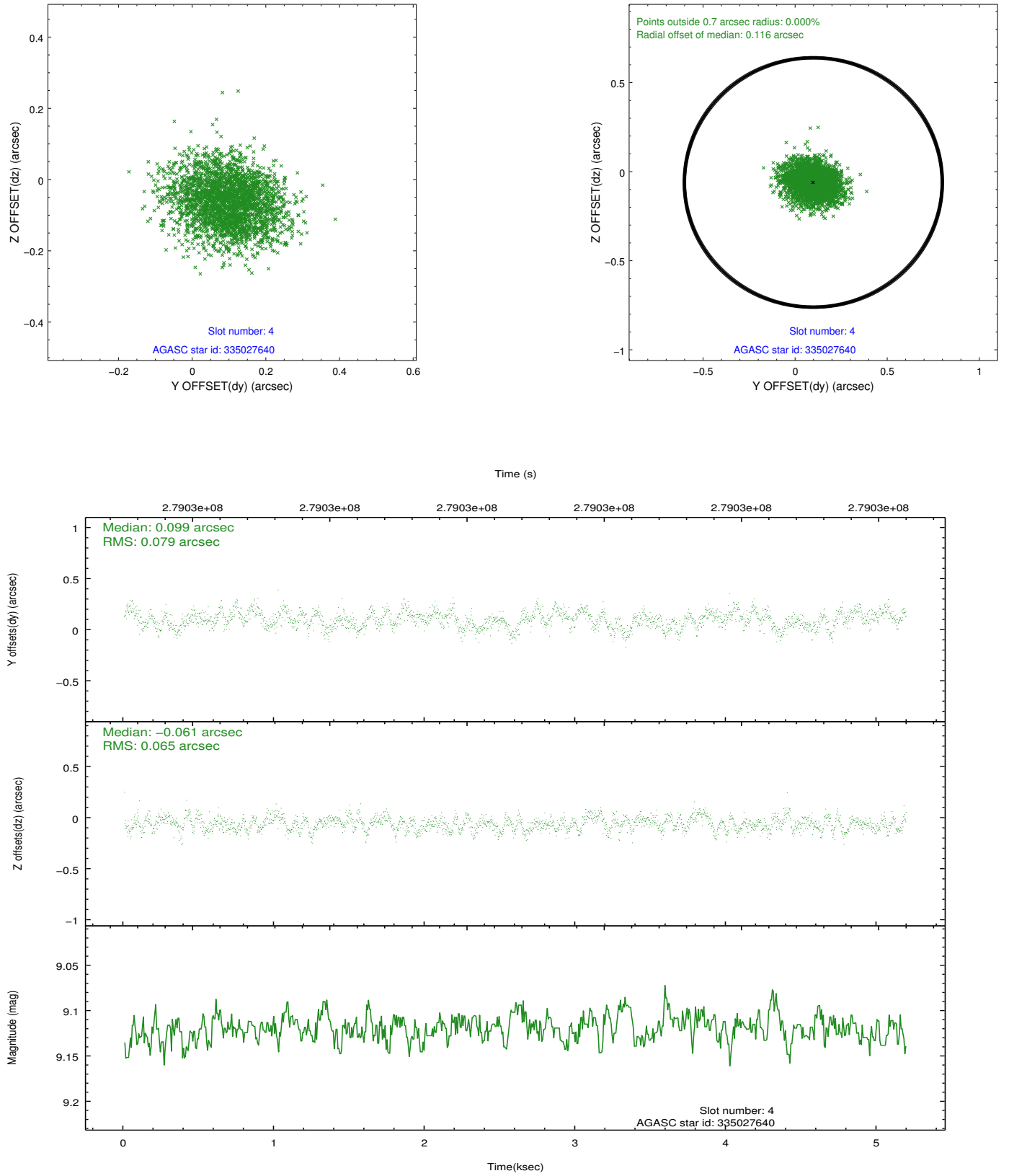
slot	status	id	mag	n_pts	med_dy	med_dz	dr1	dr2	ra	dec	mean_y	mean_z
0	FID	ACIS-I-1	7.24	1266	0.059	-0.017	0.009	0.014	0.000000	0.000000	930.65	-836.30
1	FID	ACIS-I-5	7.23	1266	-0.212	0.064	0.007	0.012	0.000000	0.000000	-1817.06	1060.72
2	FID	ACIS-I-6	7.24	1266	0.063	0.023	0.008	0.012	0.000000	0.000000	394.96	1706.48
3	GUIDE	335022112	9.21	2532	0.003	0.030	0.094	0.152	216.659296	32.794758	-2099.27	-2402.48
4	GUIDE	335027640	9.12	2529	0.099	-0.061	0.110	0.177	218.092211	33.193770	2226.44	-966.25
5	GUIDE	335028240	9.16	2526	0.203	0.225	0.081	0.130	216.746851	33.385009	-1821.06	-278.81
6	GUIDE	335028696	9.17	2527	-0.321	-0.152	0.085	0.140	217.260519	33.844112	-277.06	1368.28
7	GUIDE	335029384	8.50	2529	0.019	-0.038	0.064	0.104	217.848061	33.088477	1493.51	-1348.27

## 2.4 Star Slots

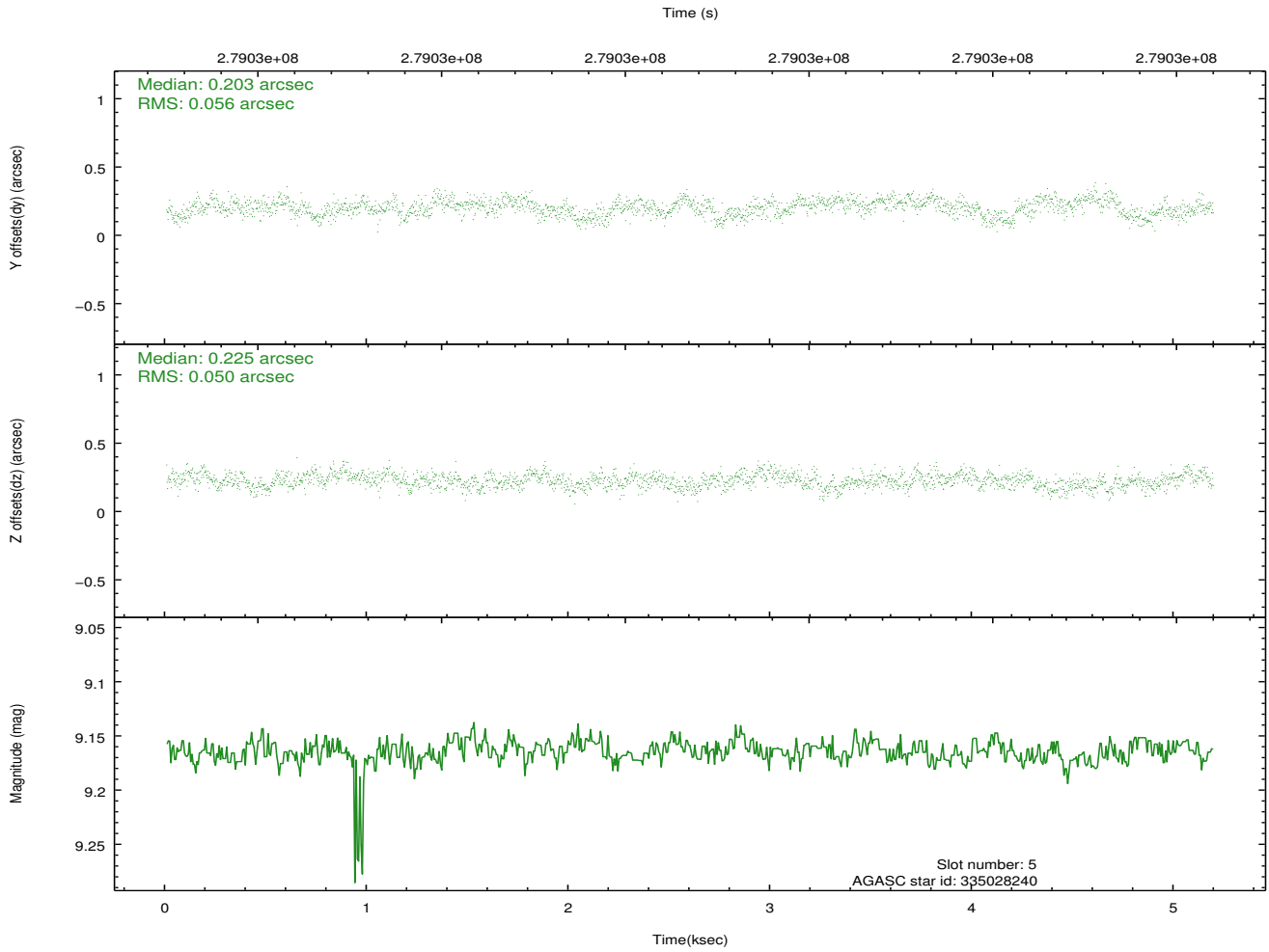
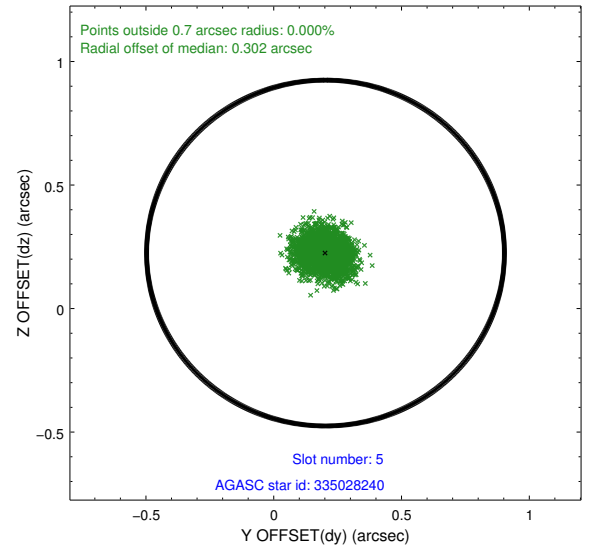
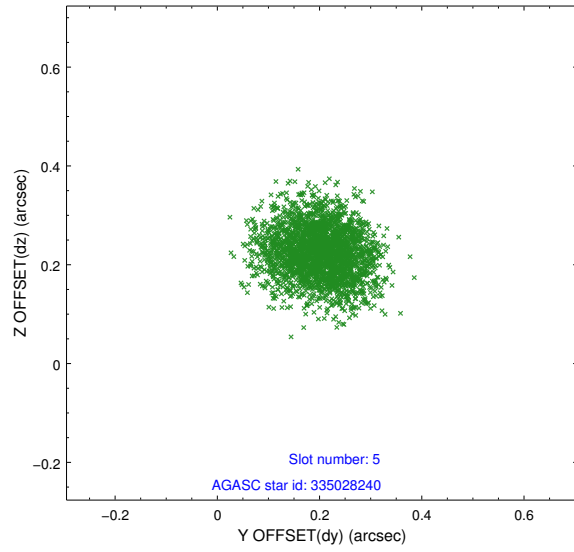
### 2.4.1 Slot 3



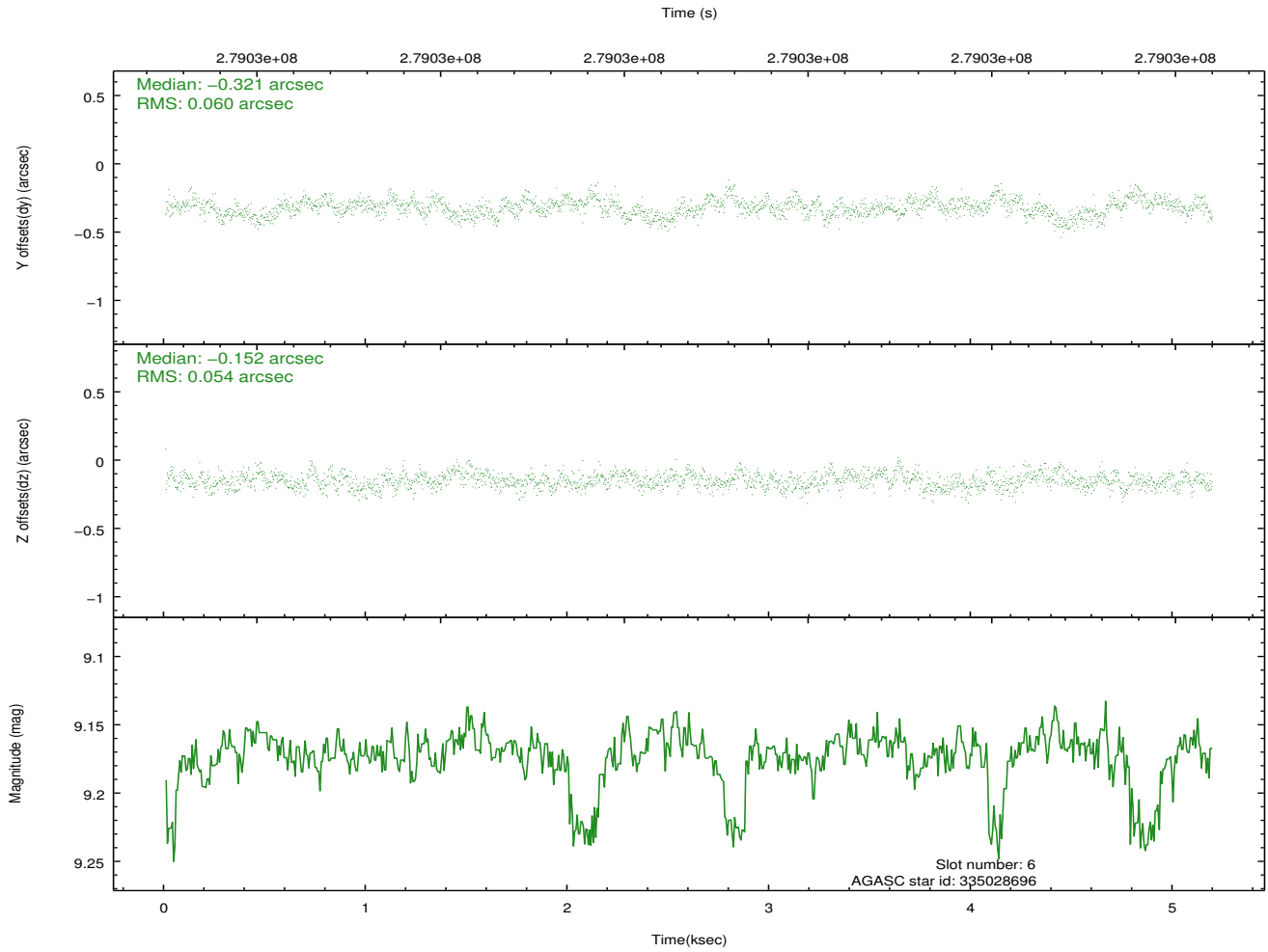
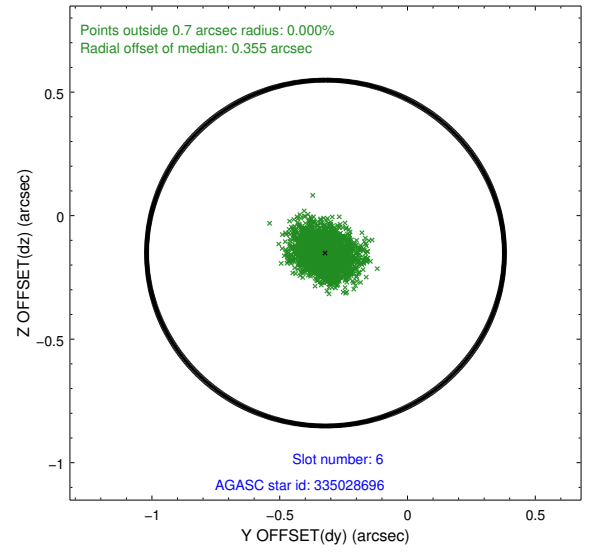
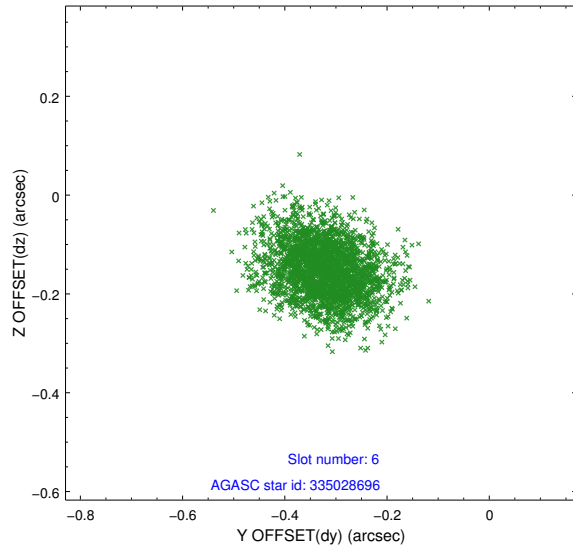
## 2.4.2 Slot 4



### 2.4.3 Slot 5

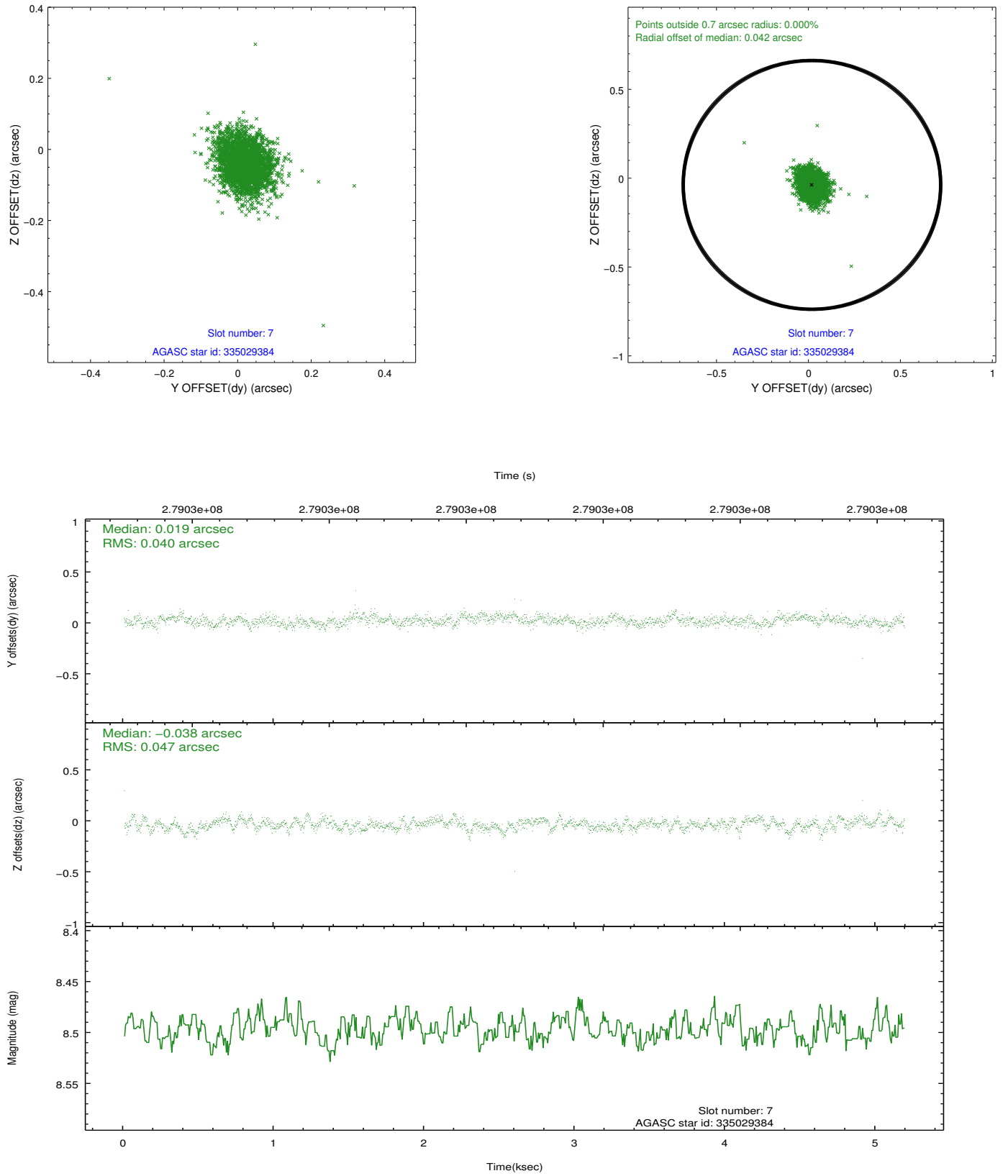


## 2.4.4 Slot 6



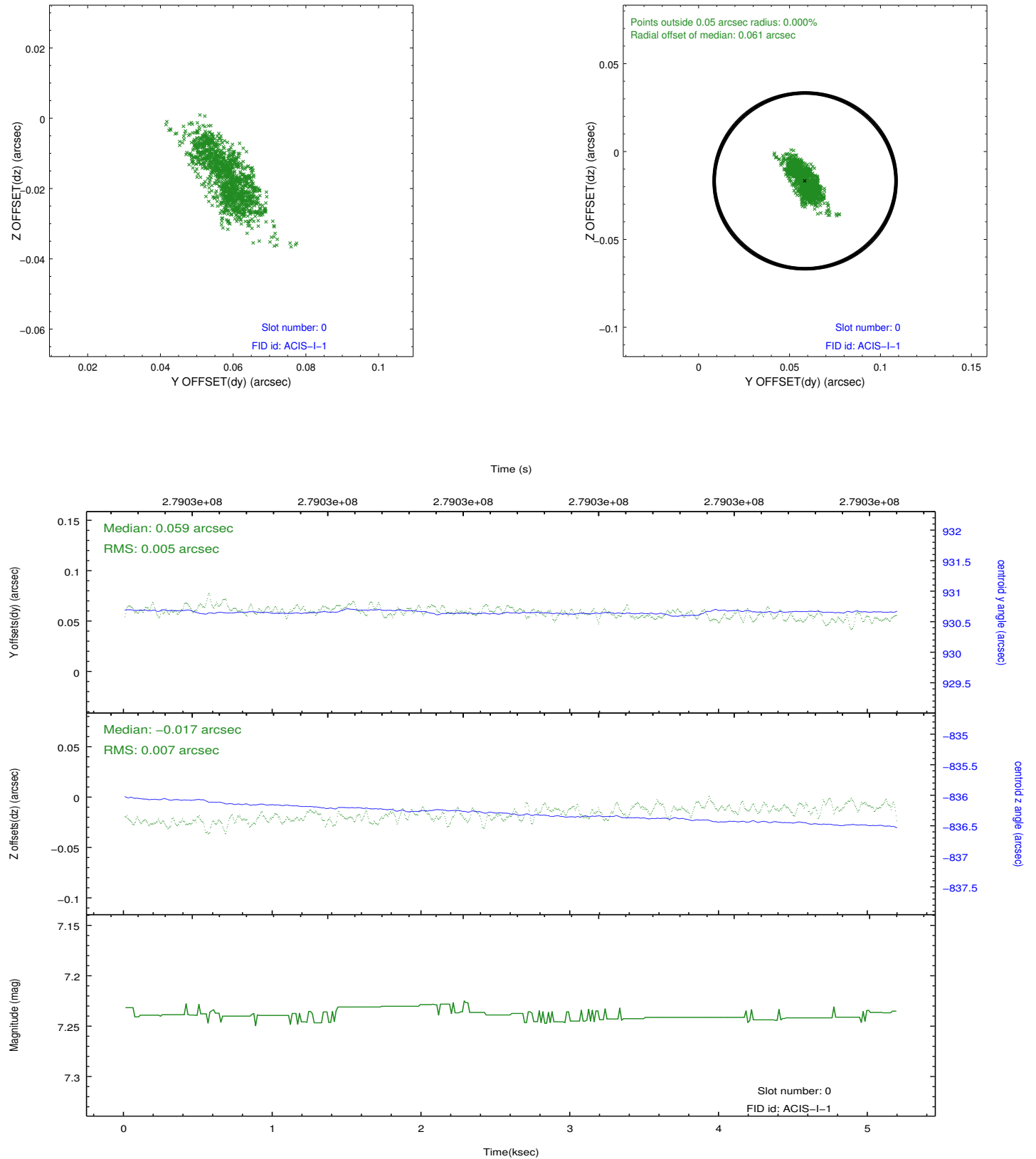


## 2.4.5 Slot 7

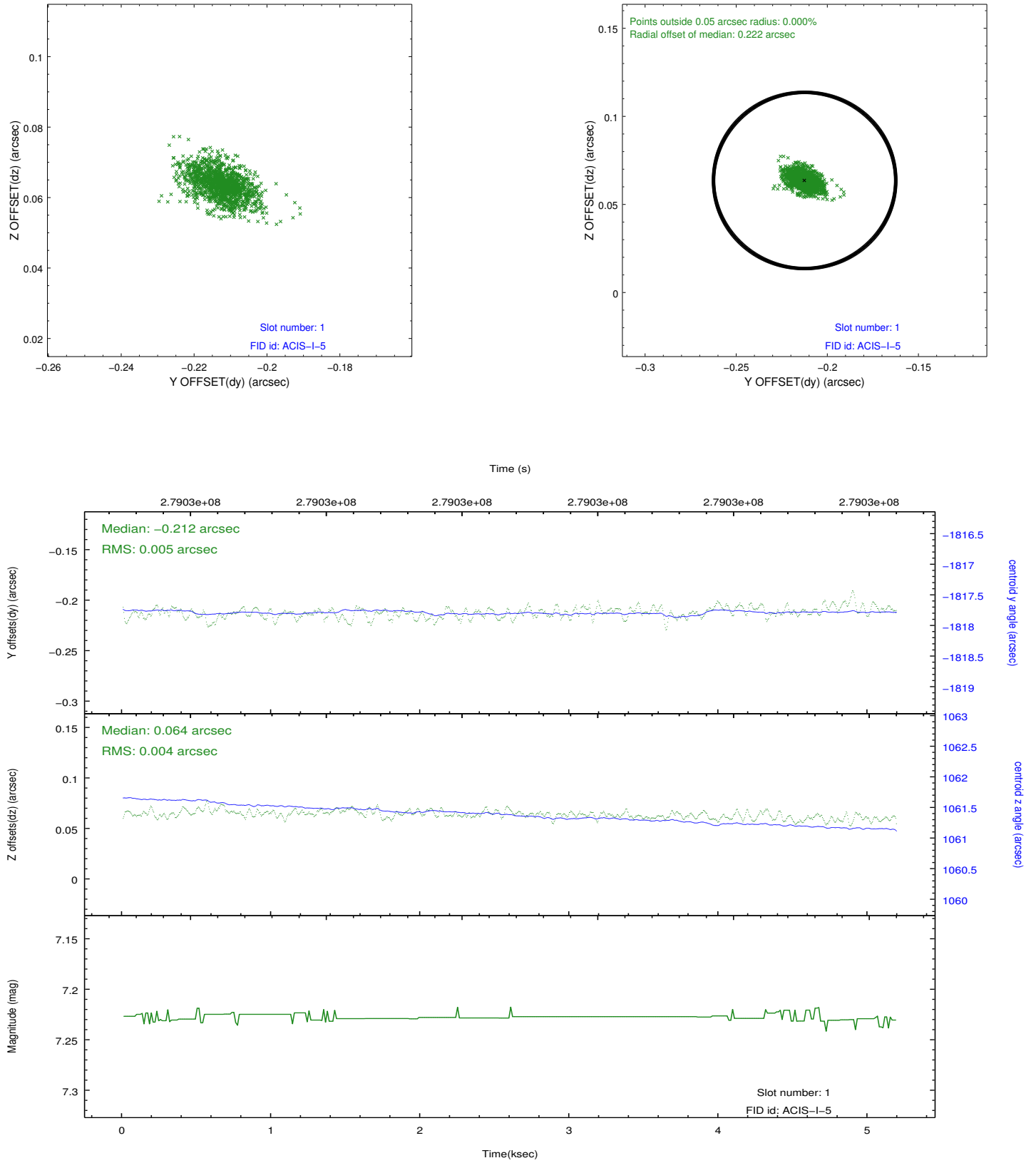


## 2.5 FID Slots

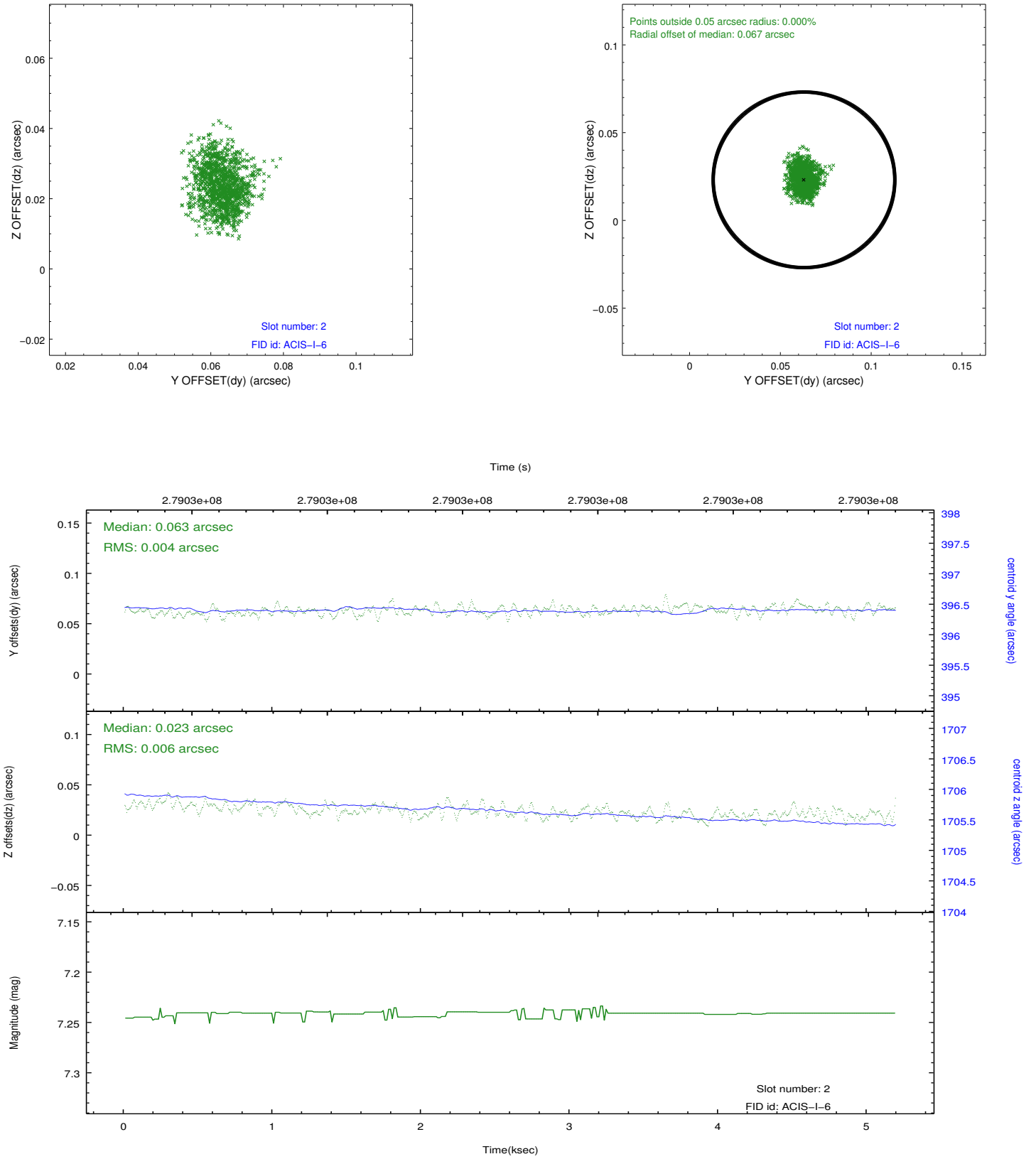
### 2.5.1 Slot 0



## 2.5.2 Slot 1



### 2.5.3 Slot 2



## A Summary

### A.1 Status

V&V Scientist	Beth Sundheim
V&V Date (YYYY-MM-DD)	2012.04.13
V&V Edition	1
V&V Disposition and Status	OK
V&V Charge Time	4.77090003

### A.2 Comments