

V&V Reference Report

L2 ASCDS Version : 7.6.7.1

Observation 6948 - L2 Version 002
Chandra X-Ray Center

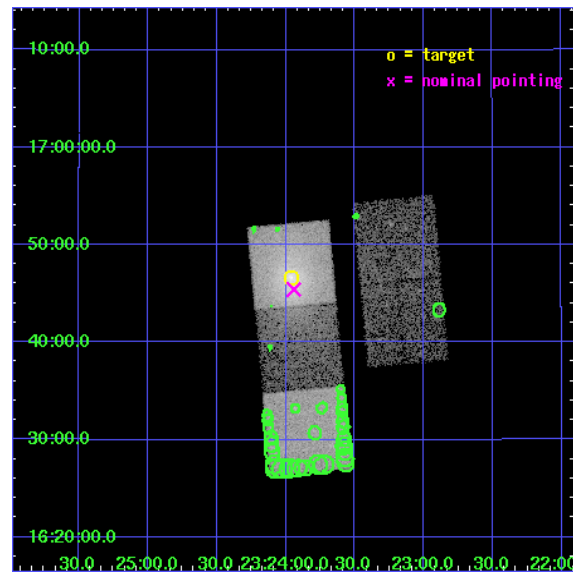
L2 Processing Date : Apr 2 2006

Contents

1	Front	2
2	OBI	3
2.1	OBI	3
2.1.1	Images	3
2.1.2	Bias	3
2.1.3	Parameters	4
2.1.4	Events	4
2.2	Compared Parameters	5
2.3	Aspect	6
2.4	Star Slots	9
2.4.1	Slot 3	9
2.4.2	Slot 4	10
2.4.3	Slot 5	11
2.4.4	Slot 6	12
2.4.5	Slot 7	13
2.5	FID Slots	14
2.5.1	Slot 0	14
2.5.2	Slot 1	15
2.5.3	Slot 2	16
3	Point Sources	17
A	Summary	18
A.1	Status	18
A.2	Comments	18

1 Front

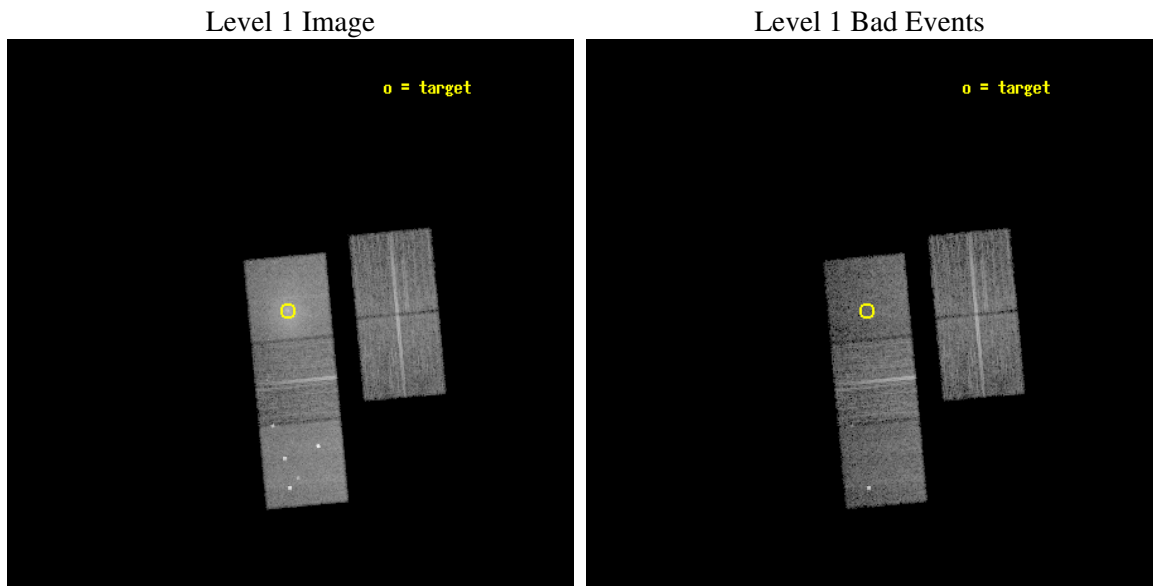
seq_num	800581
obs_id	6948
title	Dark Matter in the Core of the Relaxed Cluster A2589
observer	Prof. David Buote
object	Abell 2589
dtcycle	0
cycle	P
ra_targ	350.989167
dec_targ	16.7775
ra_nom	350.98535871507
dec_nom	16.75713401351
roll_nom	264.62586025053
revision	2
ontime	10471.799979866
livetime	10334.978203902
ontime2	10465.518019319
ontime3	10471.799979866
ontime5	10471.799979866
ontime6	10471.799979866
ontime7	10471.799979866
l2events	130318



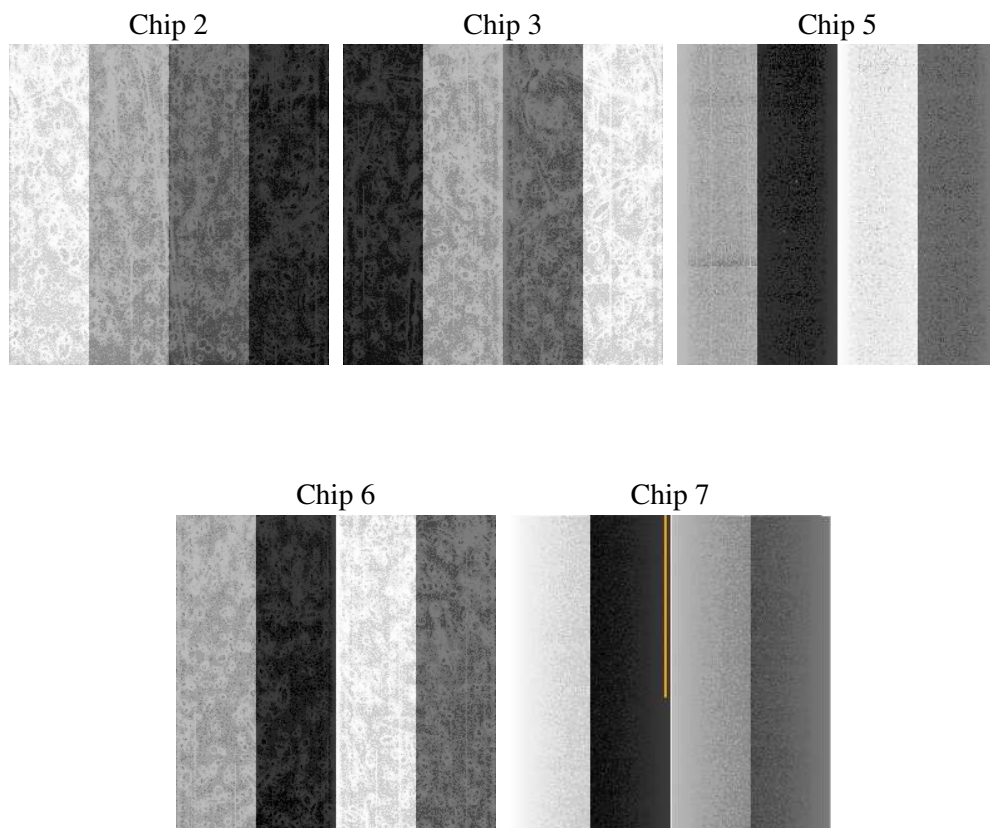
2 OBI

2.1 OBI

2.1.1 Images



2.1.2 Bias



2.1.3 Parameters

obi_num	0
ascdsver	7.6.7.1
caldsver	3.2.1
date	2006-04-02T13:44:01
revision	2

sched_exp_time	10299.108000
ontime	10478.402663022
ontime2	10472.120702475
ontime3	10478.402663022
ontime5	10478.402663022
ontime6	10478.402663022
ontime7	10478.402663022
l1events	427554

2.1.4 Events

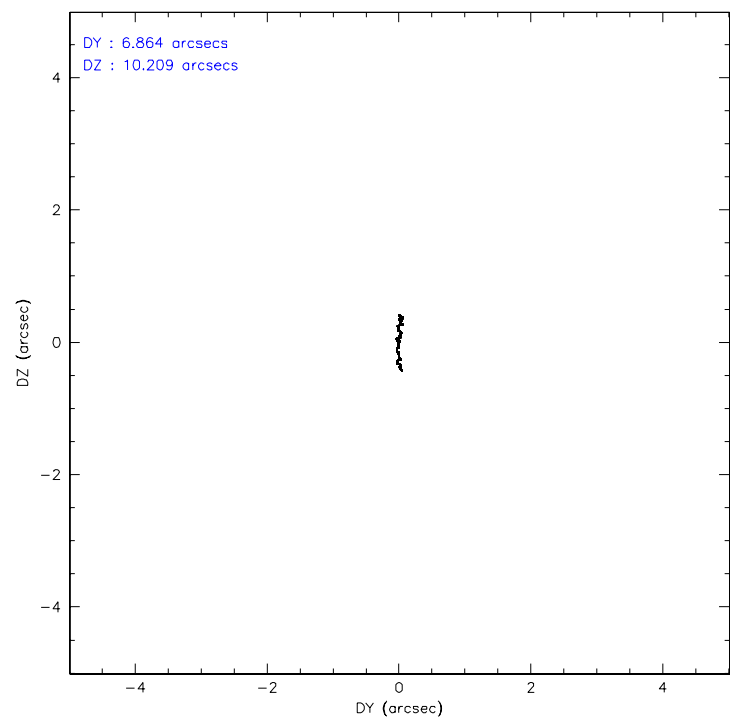
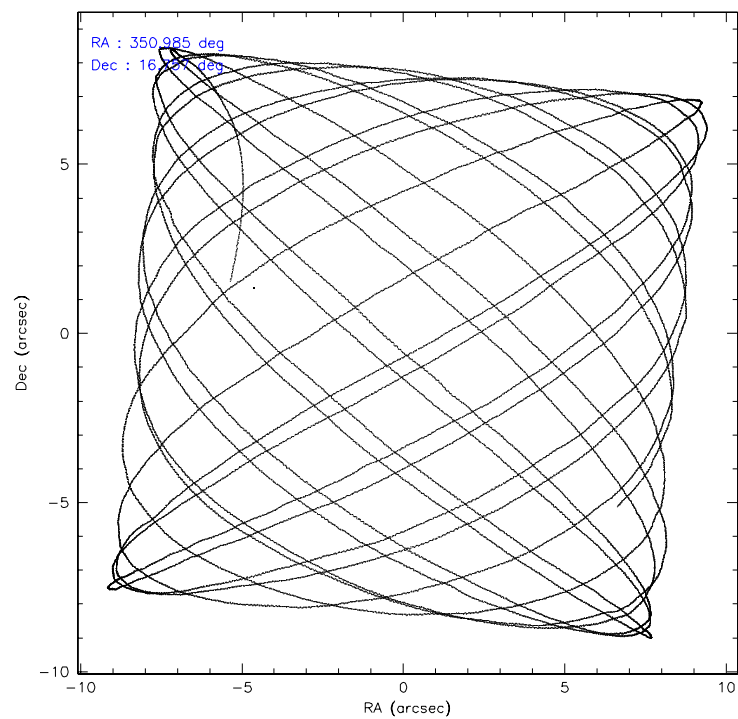
	ccd 2	ccd 3	ccd 5	ccd 6	ccd 7
level 1 events	71122	69706	101119	74274	111333
rejected events	64008	62859	51111	62298	45528
rejected %	89%	90%	50%	83%	40%

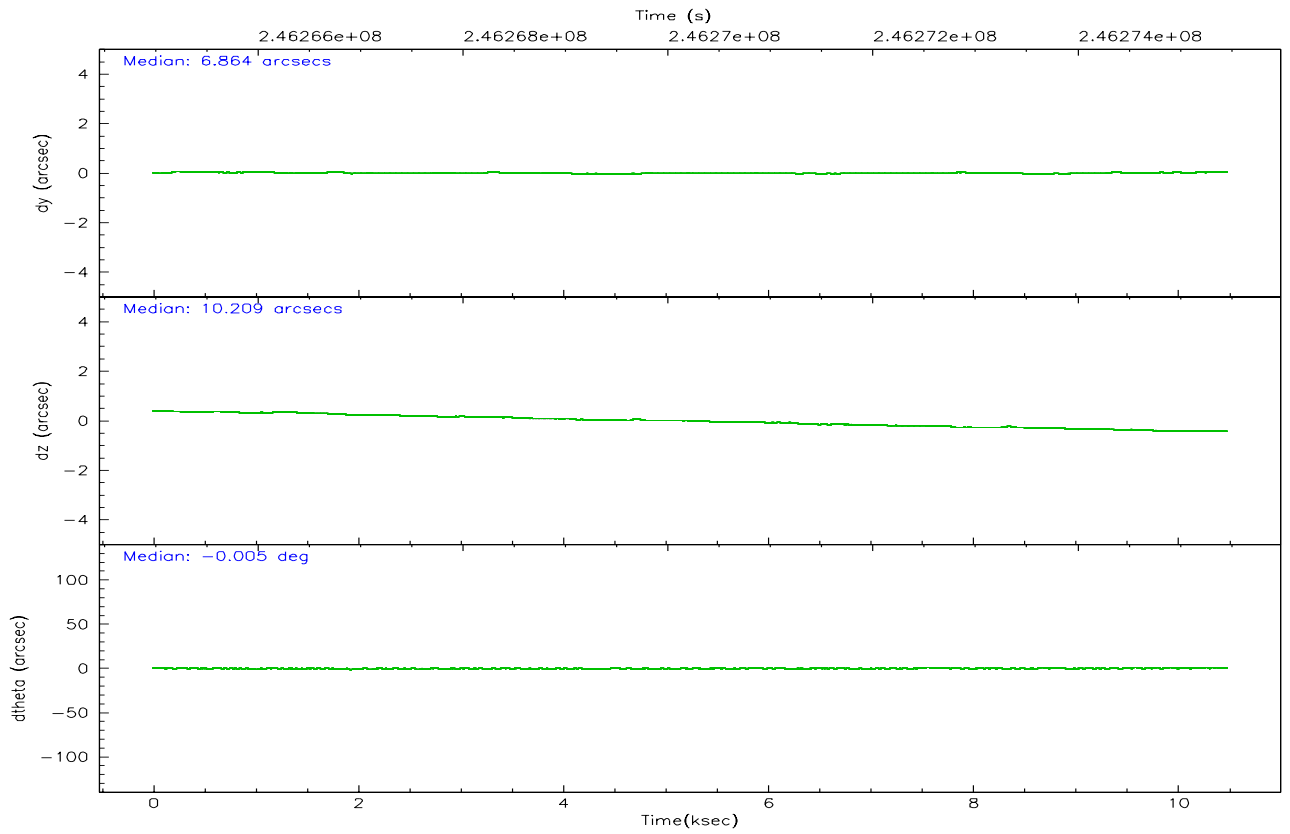
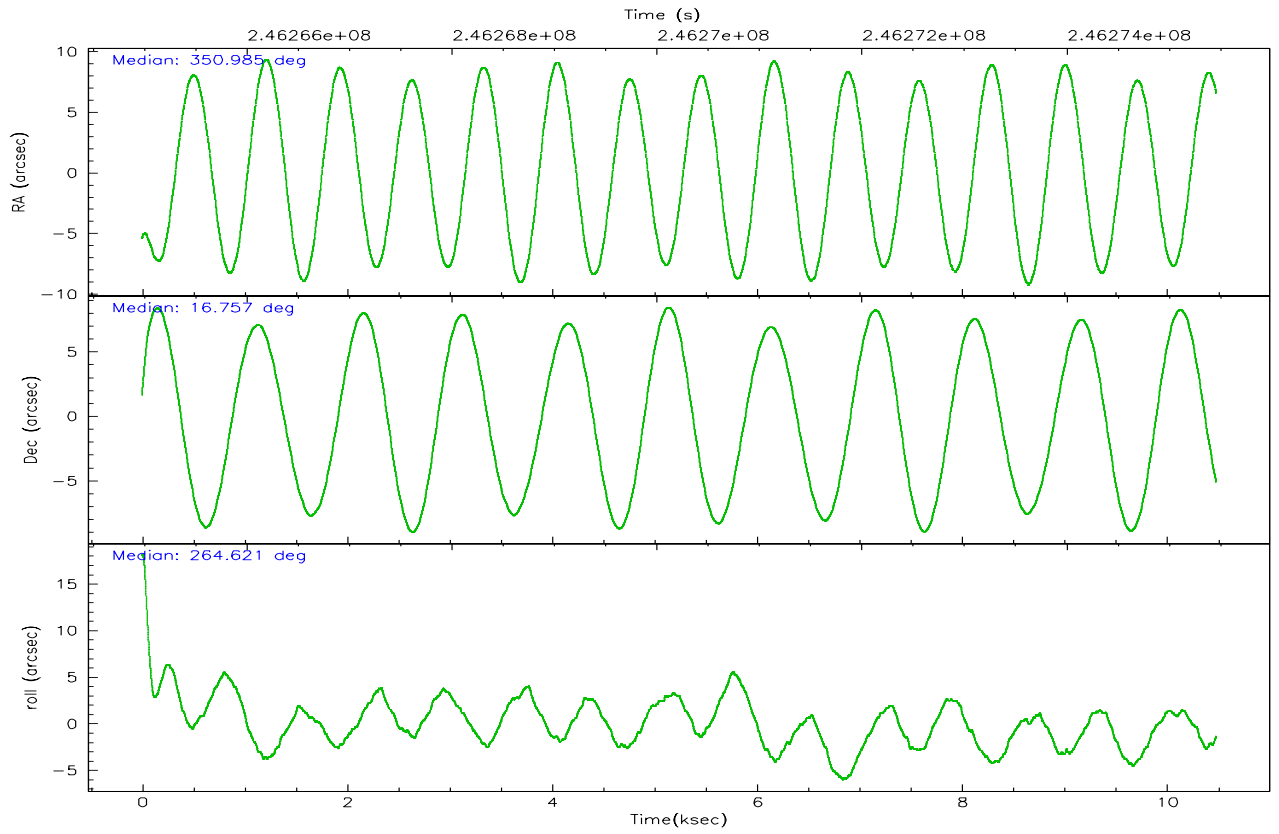
	ccd 2	ccd 3	ccd 5	ccd 6	ccd 7
grade 0 events	2716	2662	6905	6523	10976
	3%	3%	6%	8%	9%
grade 1 events	28	31	110	59	49
	0%	0%	0%	0%	0%
grade 2 events	1624	1452	14823	1931	17544
	2%	2%	14%	2%	15%
grade 3 events	759	744	1250	918	5644
	1%	1%	1%	1%	5%
grade 4 events	767	696	1187	939	5362
	1%	0%	1%	1%	4%
grade 5 events	2200	2611	5783	2824	6069
	3%	3%	5%	3%	5%
grade 6 events	1255	1298	25872	1671	26317
	1%	1%	25%	2%	23%
grade 7 events	61773	60212	45189	59409	39372
	86%	86%	44%	79%	35%

2.2 Compared Parameters

Parameter	Planned	Actual	Parameter	Planned	Actual
Instrument	ACIS	ACIS	Obspar format version number	6	6
Detector	ACIS-23567	ACIS-23567	Obspar file type	PREDICTED	ACTUAL
Grating	NONE	NONE	Obspar update status	NONE	UPDATED
Data mode	VFAINT	VFAINT	On-chip summing requested	N	N
Observation mode	POINTING	POINTING	Subarray requested	NONE	NONE
Pointing RA	350.973151	350.9853587150677	Alternating exposures requested	N	N
Pointing Dec	16.781664	16.75713401350997	Primary exposure time	0.000000	3.1
Pointing Roll	264.472739	264.6258602505284			
SIM focus pos (mm)	-0.684267	-0.6828225247311905			
SIM defocus (mm)	0	0.001444936568705701			
SIM translation stage pos (mm)	-190.132523	-190.1400660498719			
SIM translation stage offset (mm)	0	0.00754346686406393			
Observation start time	246265152.184000	246264154.76716			
Observation start date	2005-10-21T06:58:08	2005-10-21T06:42:34			
Observation end time	246275451.184000	246275671.15519			
Observation end date	2005-10-21T09:49:47	2005-10-21T09:54:31			
Read mode	TIMED	TIMED			

2.3 Aspect



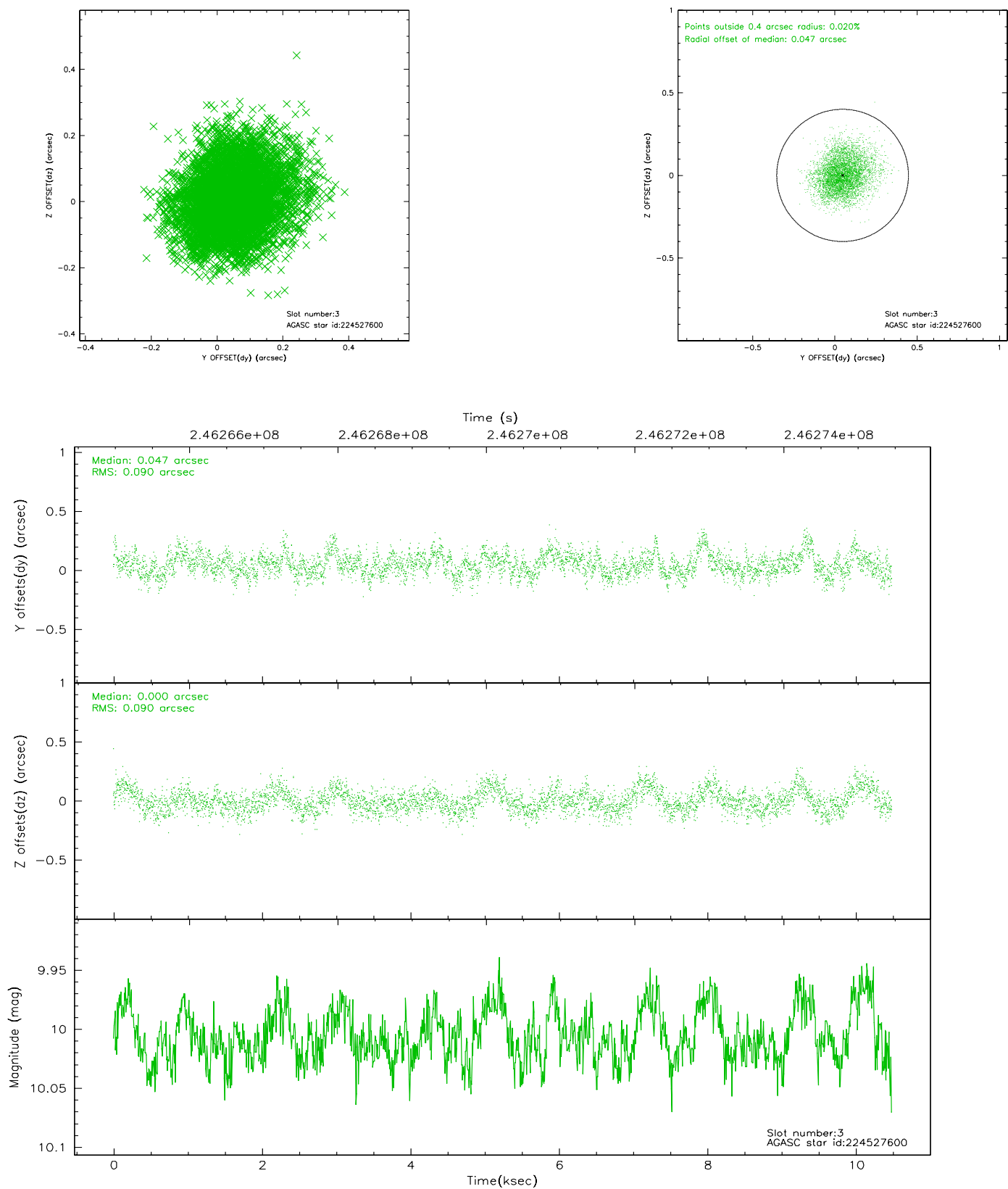


Slot Statistics

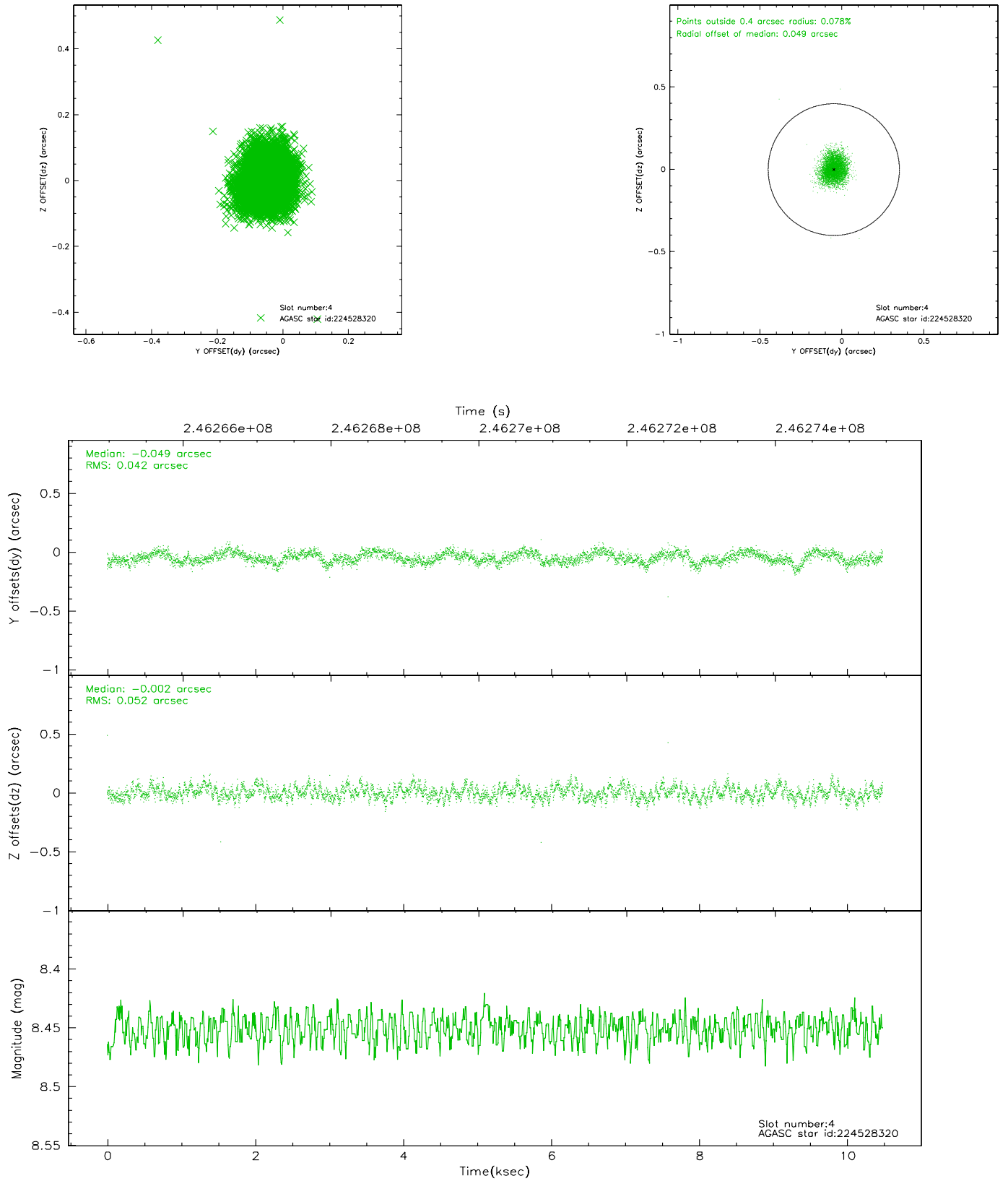
slot	status	id	mag	n_pts	med_dy	med_dz	dr1	dr2	ra	dec	mean_y	mean_z
0	FID	ACIS-S-2	7.10	2557	-0.045	-0.000	0.009	0.014	0.000000	0.000000	-759.62	-1731.46
1	FID	ACIS-S-4	7.21	2557	0.056	0.022	0.006	0.011	0.000000	0.000000	2153.49	176.59
2	FID	ACIS-S-5	7.23	2557	-0.042	-0.013	0.008	0.014	0.000000	0.000000	-1811.86	170.71
3	GUIDE	224527600	10.01	5103	0.047	0.000	0.137	0.219	351.354290	17.243672	-1782.35	1144.33
4	GUIDE	224528320	8.45	5114	-0.049	-0.002	0.071	0.112	350.399607	17.080070	-881.72	-2067.91
5	GUIDE	224528984	8.96	5114	0.071	-0.006	0.088	0.143	350.492856	16.632535	692.61	-1595.24
6	GUIDE	224531944	9.24	5109	0.126	0.113	0.081	0.131	350.741588	16.203421	2149.58	-596.27
7	GUIDE	224536712	9.33	5106	-0.201	-0.109	0.087	0.142	350.322096	17.433192	-2122.03	-2452.33

2.4 Star Slots

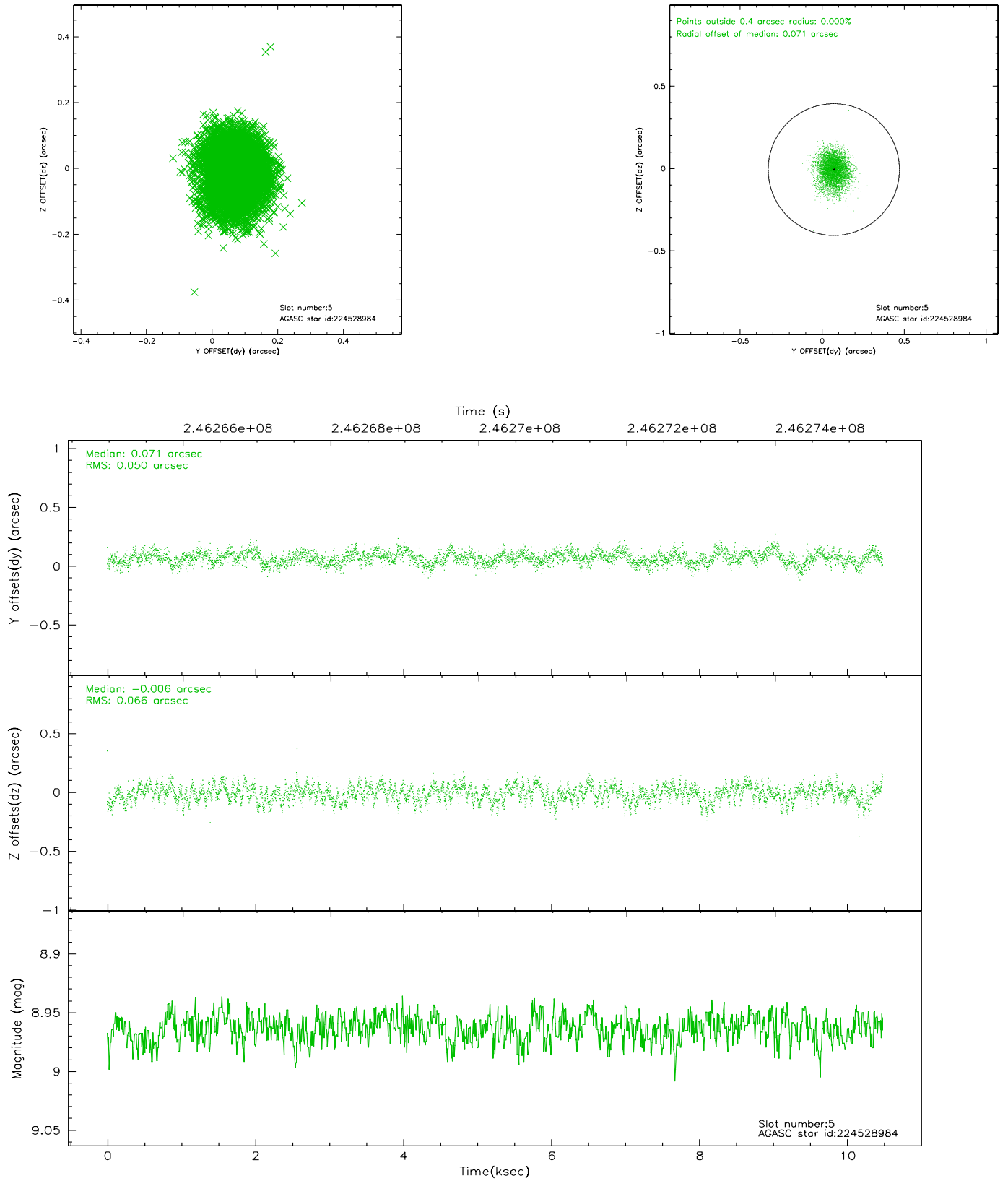
2.4.1 Slot 3



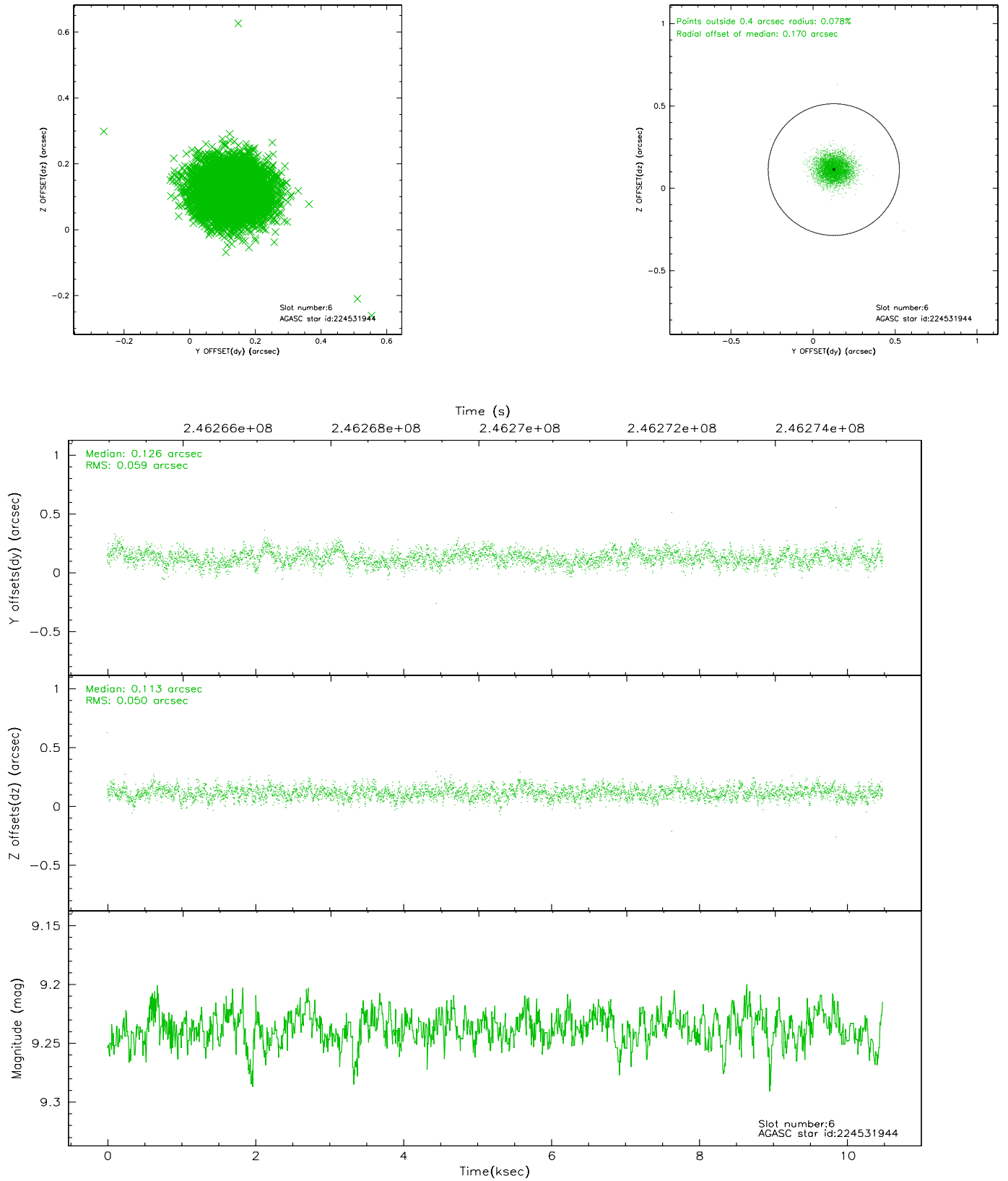
2.4.2 Slot 4



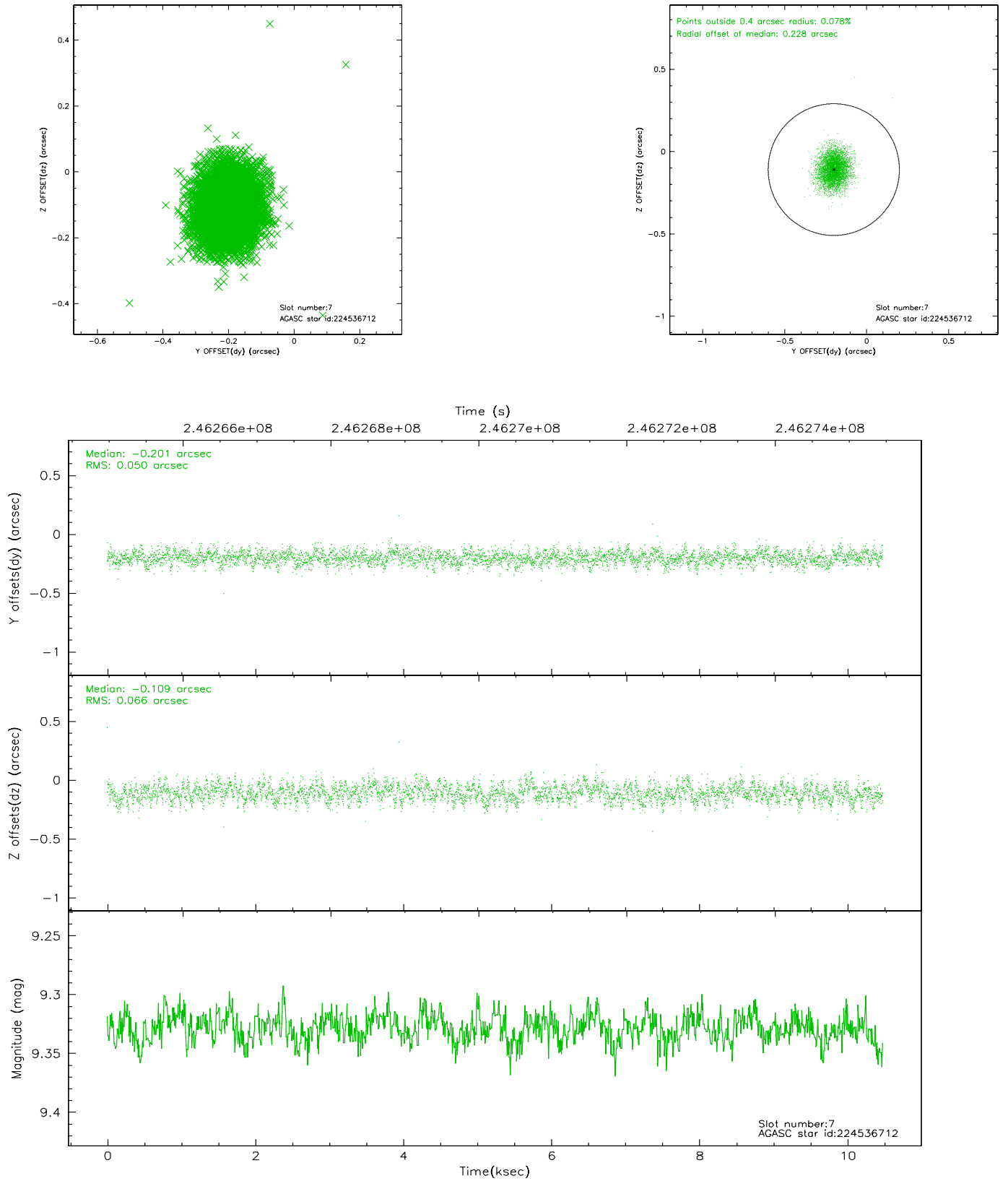
2.4.3 Slot 5



2.4.4 Slot 6

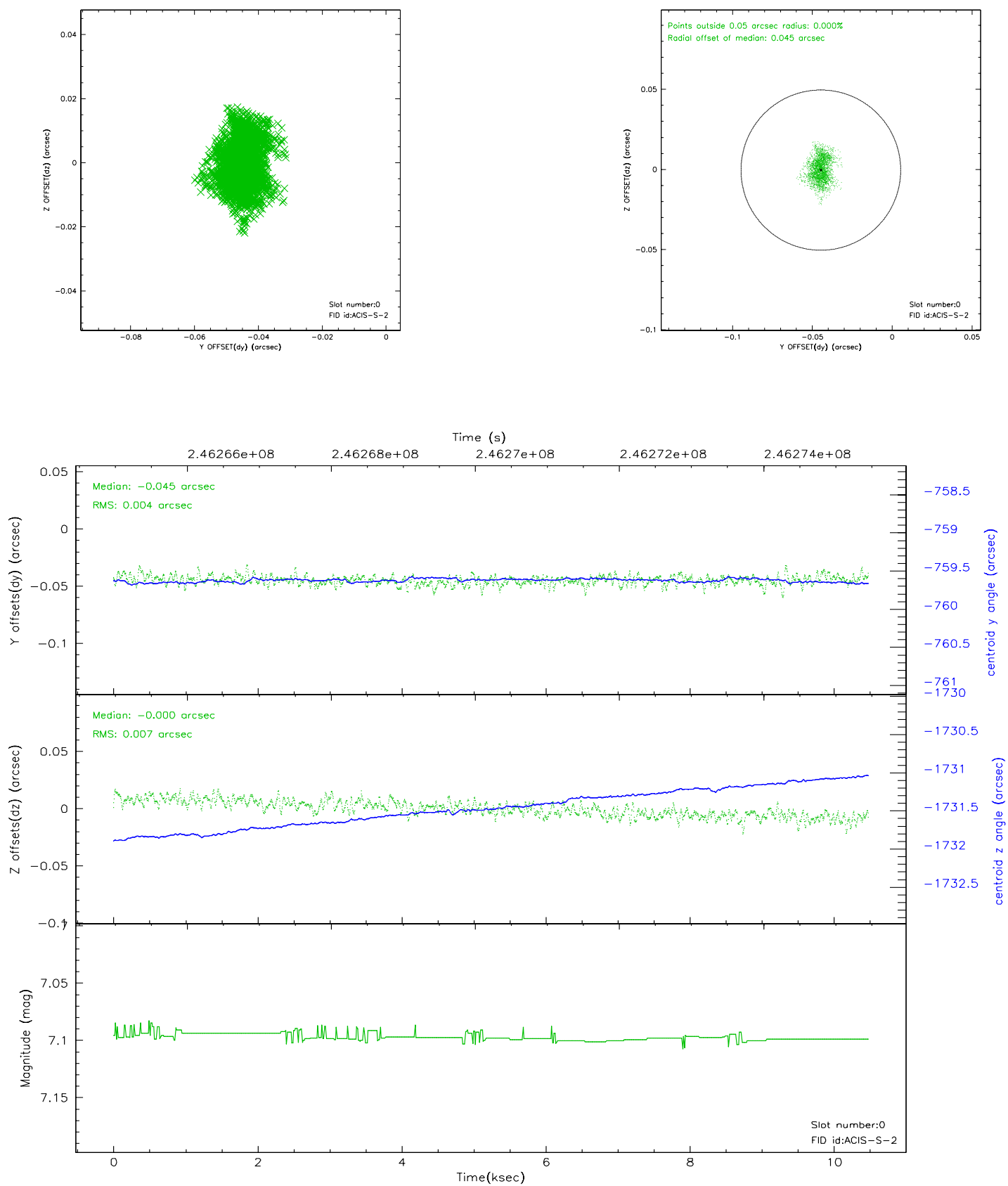


2.4.5 Slot 7

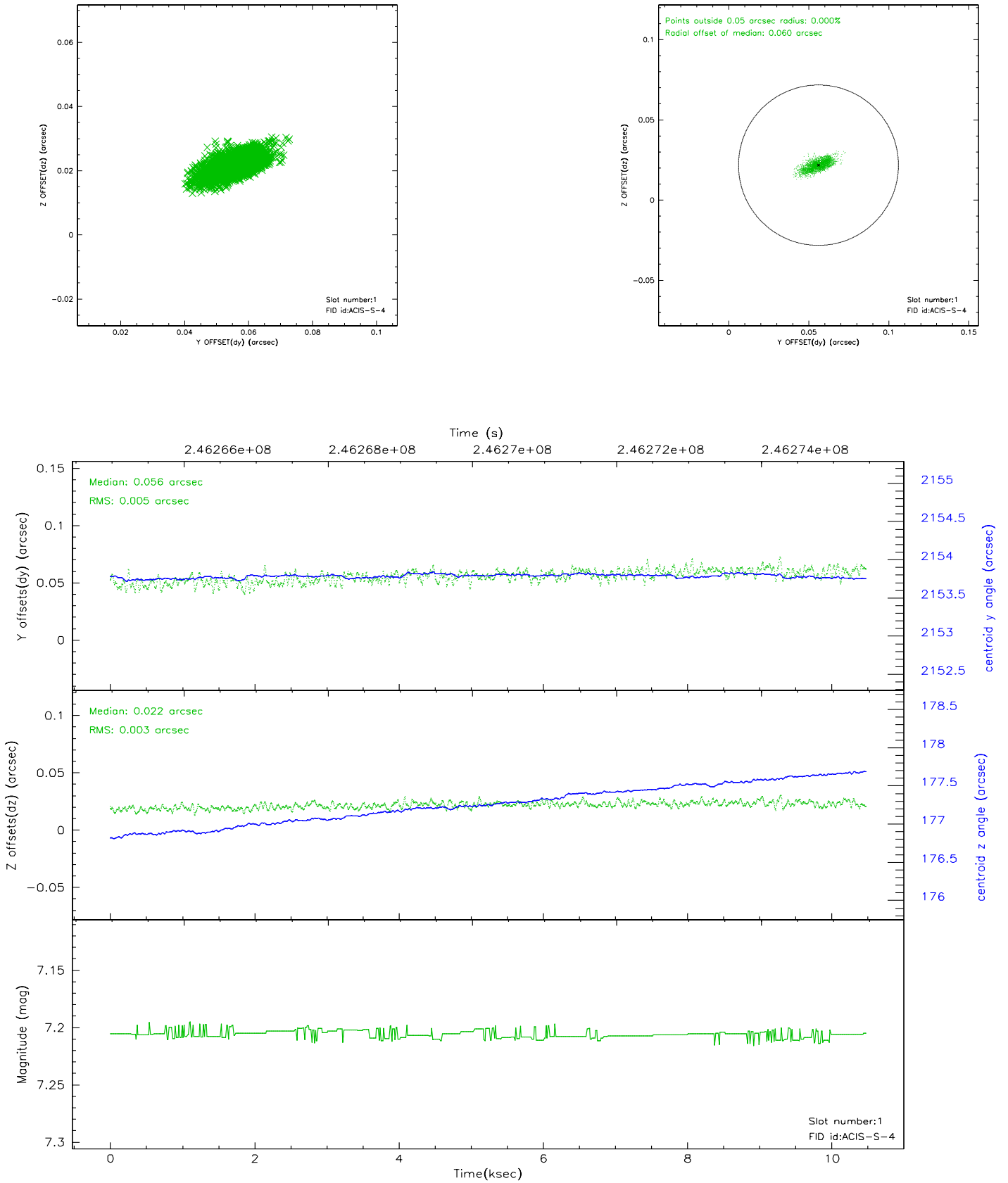


2.5 FID Slots

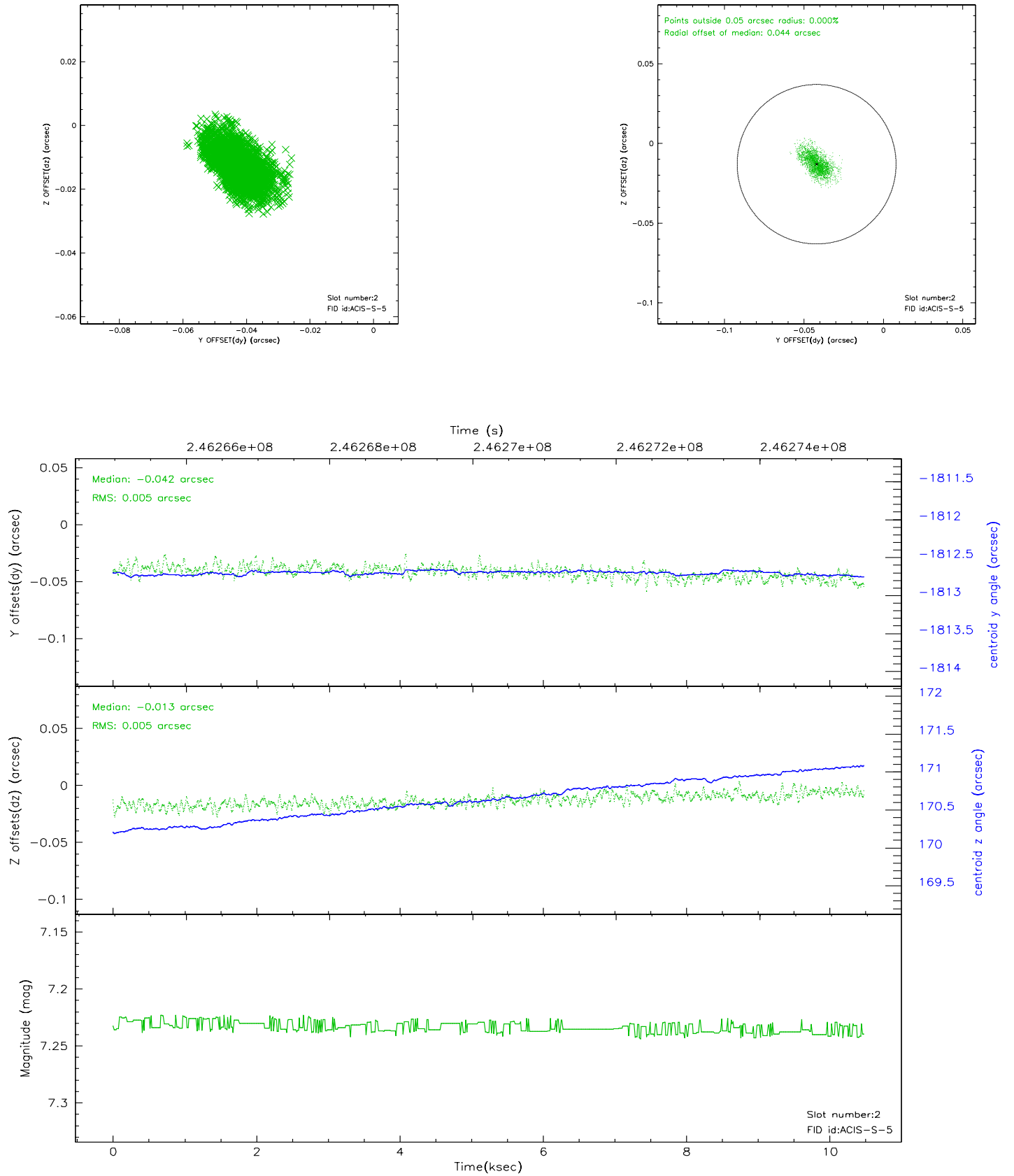
2.5.1 Slot 0



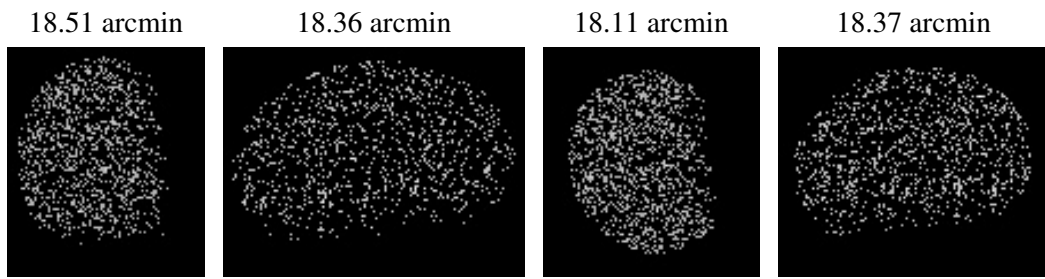
2.5.2 Slot 1



2.5.3 Slot 2



3 Point Sources



A Summary

A.1 Status

V&V Scientist	Beth Sundheim
V&V Date (YYYY-MM-DD)	2006.04.03
V&V Edition	1
V&V Disposition and Status	OK
V&V Charge Time	10.47179

A.2 Comments