

V&V Reference Report

L2 ASCDS Version : 8.4.3.1

Observation 6828 - L2 Version 2
Chandra X-Ray Center

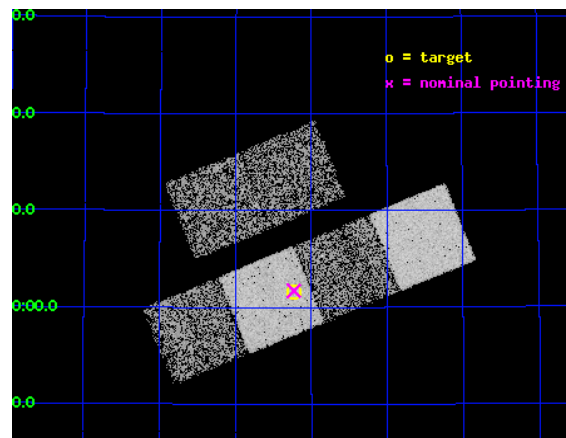
L2 Processing Date : Mar 24 2012

Contents

1	Front	2
2	OBI	3
2.1	OBI	3
2.1.1	Images	3
2.1.2	Bias	3
2.1.3	Parameters	4
2.1.4	Events	4
2.2	Compared Parameters	5
2.3	Aspect	6
2.4	Star Slots	9
2.4.1	Slot 3	9
2.4.2	Slot 4	10
2.4.3	Slot 5	11
2.4.4	Slot 6	12
2.4.5	Slot 7	13
2.5	FID Slots	14
2.5.1	Slot 0	14
2.5.2	Slot 1	15
2.5.3	Slot 2	16
A	Summary	17
A.1	Status	17
A.2	Comments	17

1 Front

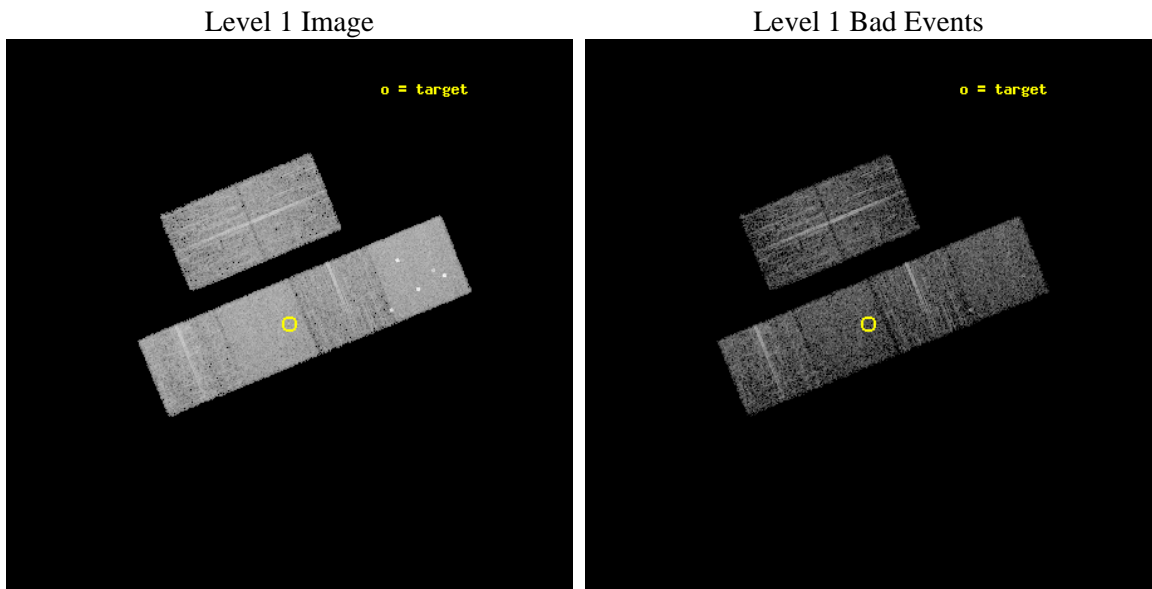
seq_num	701246	Sequence number
obs_id	6828	Observation id
title	Chandra ACIS Snapshot Observations of the Most Luminous Quasars from the Sloan Digital Sky Survey	Proposal title
observer	Professor Gordon Garmire	Principal investigator
object	SDSS J0950+5801	Source name
dtcycle	0	
cycle	P	events from which exps? Prim/Second/Both
ra_targ	147.55875	Observer's specified target RA [deg]
dec_targ	58.026806	Observer's specified target Dec [deg]
ra_nom	147.55763537061	Nominal RA [deg]
dec_nom	58.028746790414	Nominal Dec [deg]
roll_nom	157.7026550738	Nominal Roll [deg]
revision	2	Processing version of data
ontime	3954.3299084306	Sum of GTIs [s]
livetime	3904.2578021184	Livetime [s]
ontime2	3954.3709484339	Sum of GTIs [s]
ontime3	3954.2067884207	Sum of GTIs [s]
ontime5	3954.2888684273	Sum of GTIs [s]
ontime6	3954.247828424	Sum of GTIs [s]
ontime7	3954.3299084306	Sum of GTIs [s]
ontime8	3954.1657484472	Sum of GTIs [s]
l2events	55645	Number of level 2 events



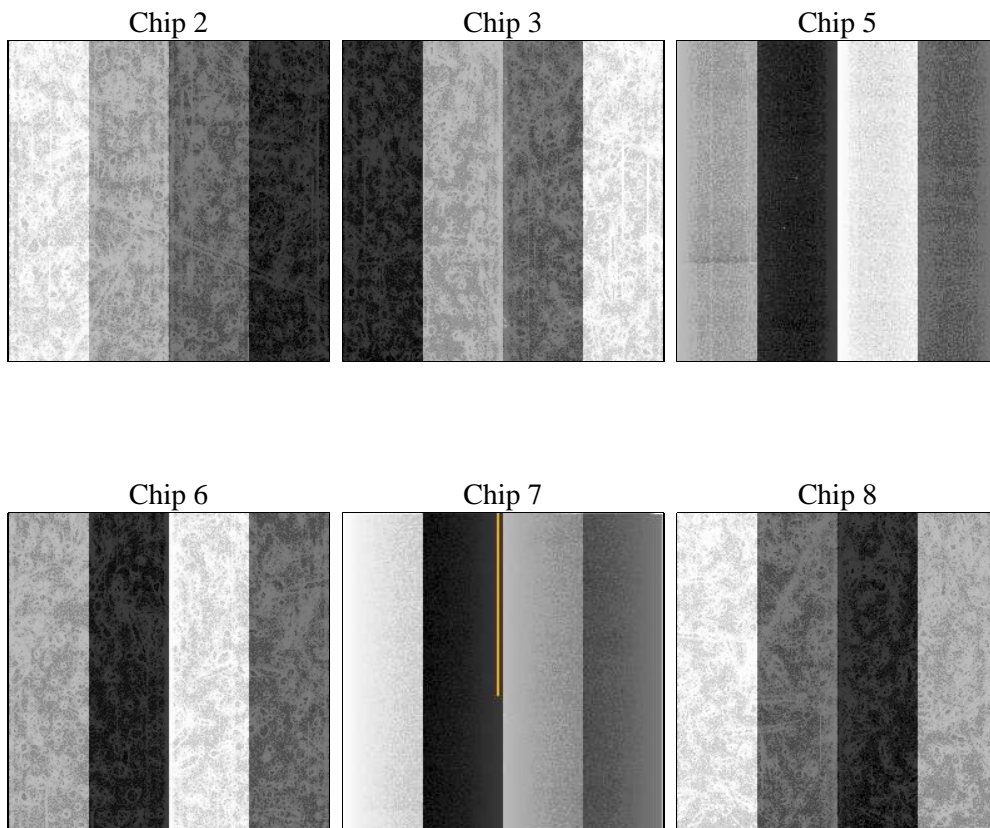
2 OBI

2.1 OBI

2.1.1 Images



2.1.2 Bias



2.1.3 Parameters

obi_num	0	Obi number	sched_exp_time	4000.000000	[s] Scheduled observation exposure time
ascdsver	8.4.3	Processing system revision	ontime	3954.3299084306	Sum of GTIs [s]
caldsver	4.4.8	 	ontime2	3954.3709484339	Sum of GTIs [s]
date	2012-03-24T06:05:53	Date and time of file creation	ontime3	3954.2067884207	Sum of GTIs [s]
revision	2	Processing version of data	ontime5	3954.2888684273	Sum of GTIs [s]
			ontime6	3954.247828424	Sum of GTIs [s]
			ontime7	3954.3299084306	Sum of GTIs [s]
			ontime8	3954.1657484472	Sum of GTIs [s]
			l1events	241514	Number of level 1 events

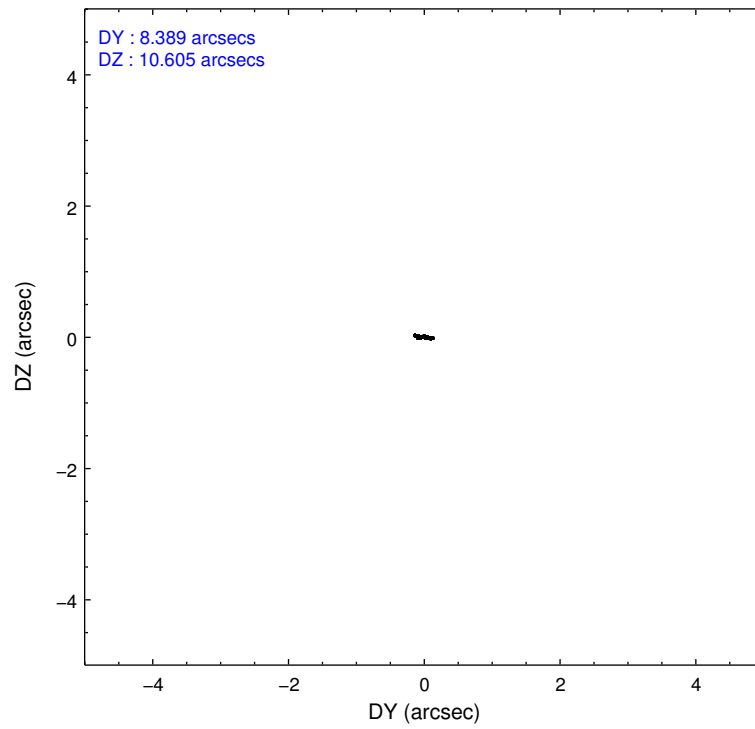
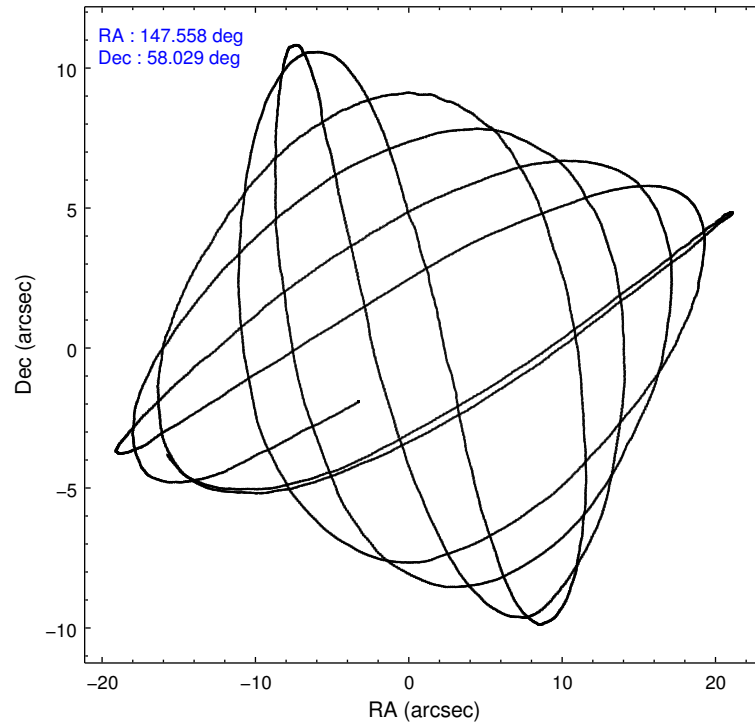
2.1.4 Events

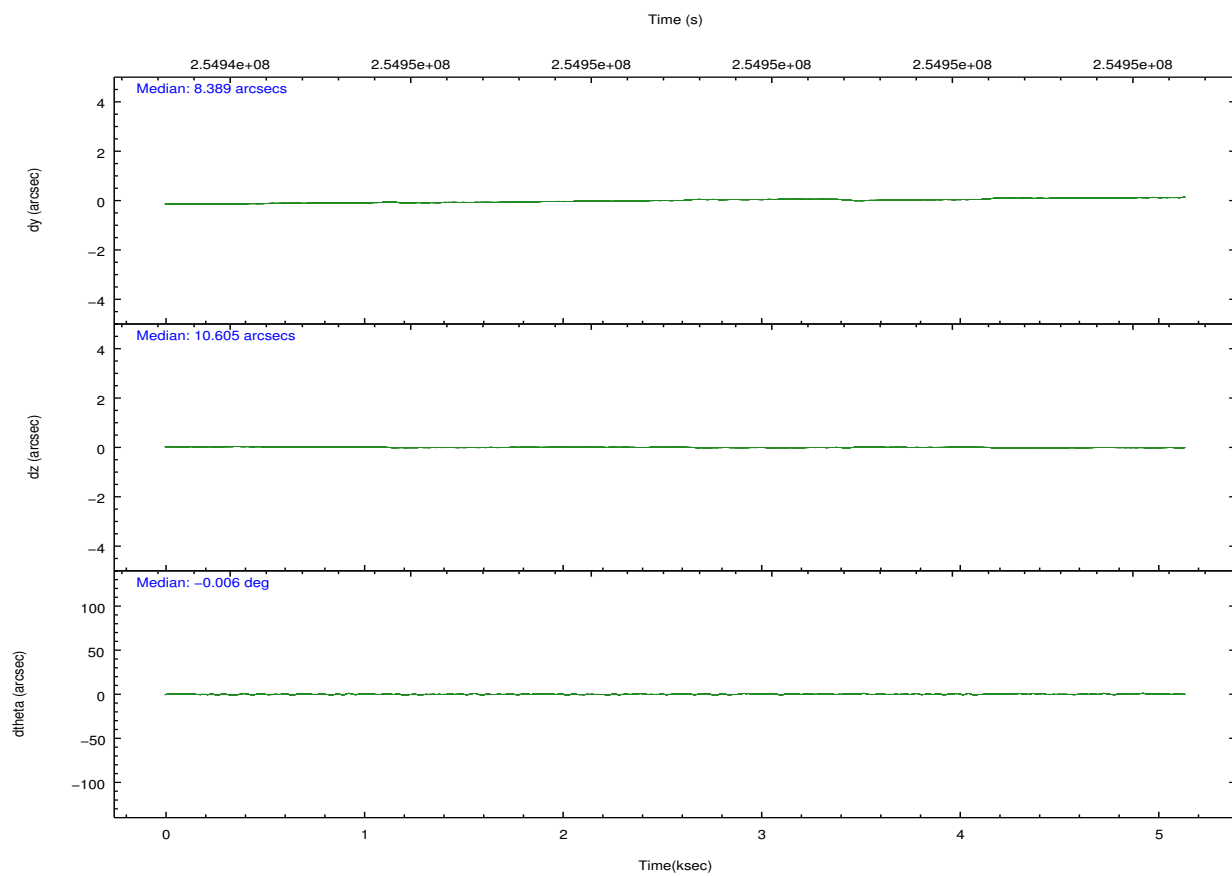
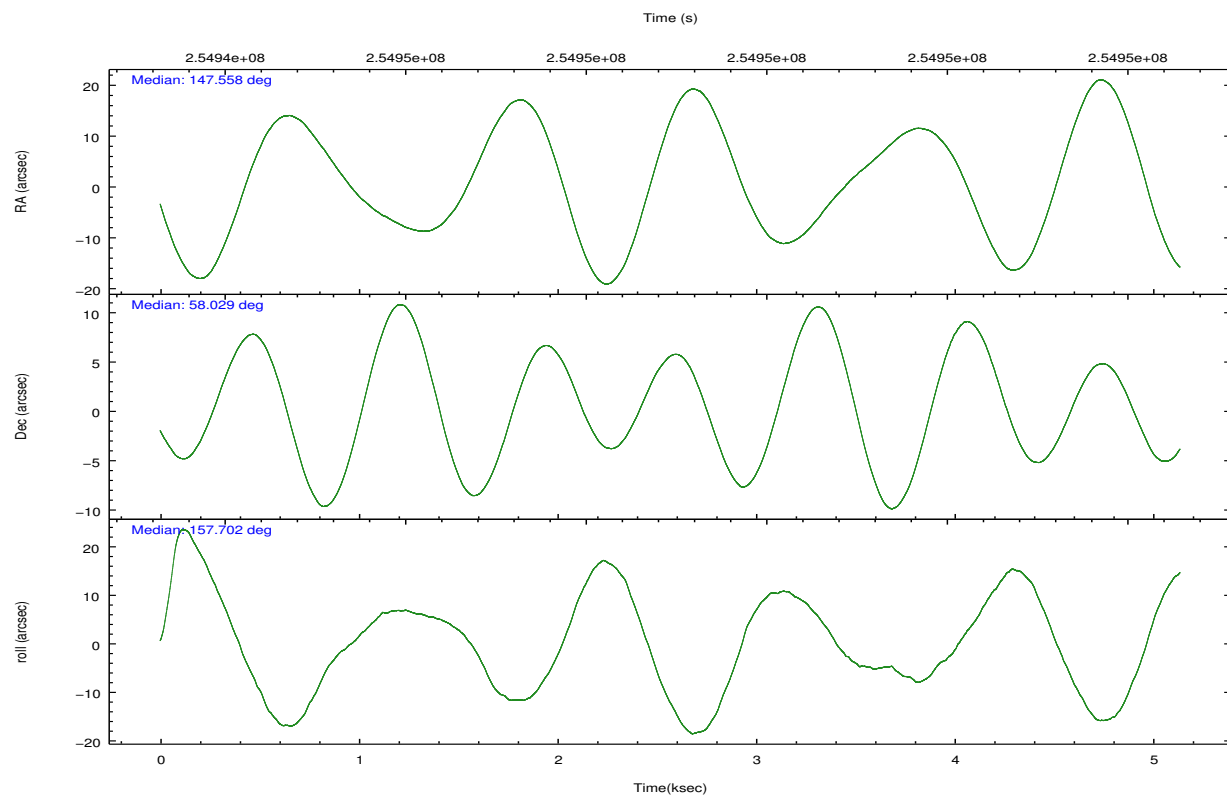
	ccd 2	ccd 3	ccd 5	ccd 6	ccd 7	ccd 8		ccd 2	ccd 3	ccd 5	ccd 6	ccd 7	ccd 8
level 1 events	33401	34207	53679	33786	45035	41406	grade 0 events	1936	1917	4391	1826	1738	3144
rejected events	29264	30056	27269	29446	25917	32219		5%	5%	8%	5%	3%	7%
rejected %	87%	87%	50%	87%	57%	77%	grade 1 events	22	28	200	17	43	31
								0%	0%	0%	0%	0%	0%
							grade 2 events	801	785	8019	897	3882	1928
								2%	2%	14%	2%	8%	4%
							grade 3 events	388	392	851	392	1635	1001
								1%	1%	1%	1%	3%	2%
							grade 4 events	370	398	872	381	1576	887
								1%	1%	1%	1%	3%	2%
							grade 5 events	1290	1516	3596	1570	4250	2024
								3%	4%	6%	4%	9%	4%
							grade 6 events	648	669	12326	849	10318	2231
								1%	1%	22%	2%	22%	5%
							grade 7 events	27946	28502	23424	27854	21593	30160
								83%	83%	43%	82%	47%	72%

2.2 Compared Parameters

Parameter	Planned	Actual	Parameter	Planned	Actual
Instrument	ACIS	ACIS	Obspar format version number	7	7
Detector	ACIS-235678	ACIS-235678	Obspar file type	PREDICTED	ACTUAL
Grating	NONE	NONE	Obspar update status	NONE	UPDATED
Data mode	FAINT	FAINT	Number of optional ACIS chips dropped	0	0
Observation mode	POINTING	POINTING	On-chip summing requested	N	N
[deg] Pointing RA	147.608652	147.5576353706104	Subarray requested	NONE	NONE
[deg] Pointing Dec	58.032818	58.02874679041433	Alternating exposures requested	N	N
[deg] Pointing Roll	157.502747	157.7026550737968	[s] Primary exposure time	0.000000	3.2
[mm] SIM focus pos	-0.684267	-0.6828225247311905			
[mm] SIM defocus	0	0.001444936568705701			
[mm] SIM translation stage pos	-190.132523	-190.1425803651734			
[mm] SIM translation stage offset	0	0.01005778216563158			
[s] Observation start time (MET)	254946028.184000	254944589.06857			
Observation start date	2006-01-29T18:19:23	2006-01-29T17:56:29			
[s] Observation end time (MET)	254950028.184000	254950981.48137			
Observation end date	2006-01-29T19:26:03	2006-01-29T19:43:01			
Read mode	TIMED	TIMED			

2.3 Aspect



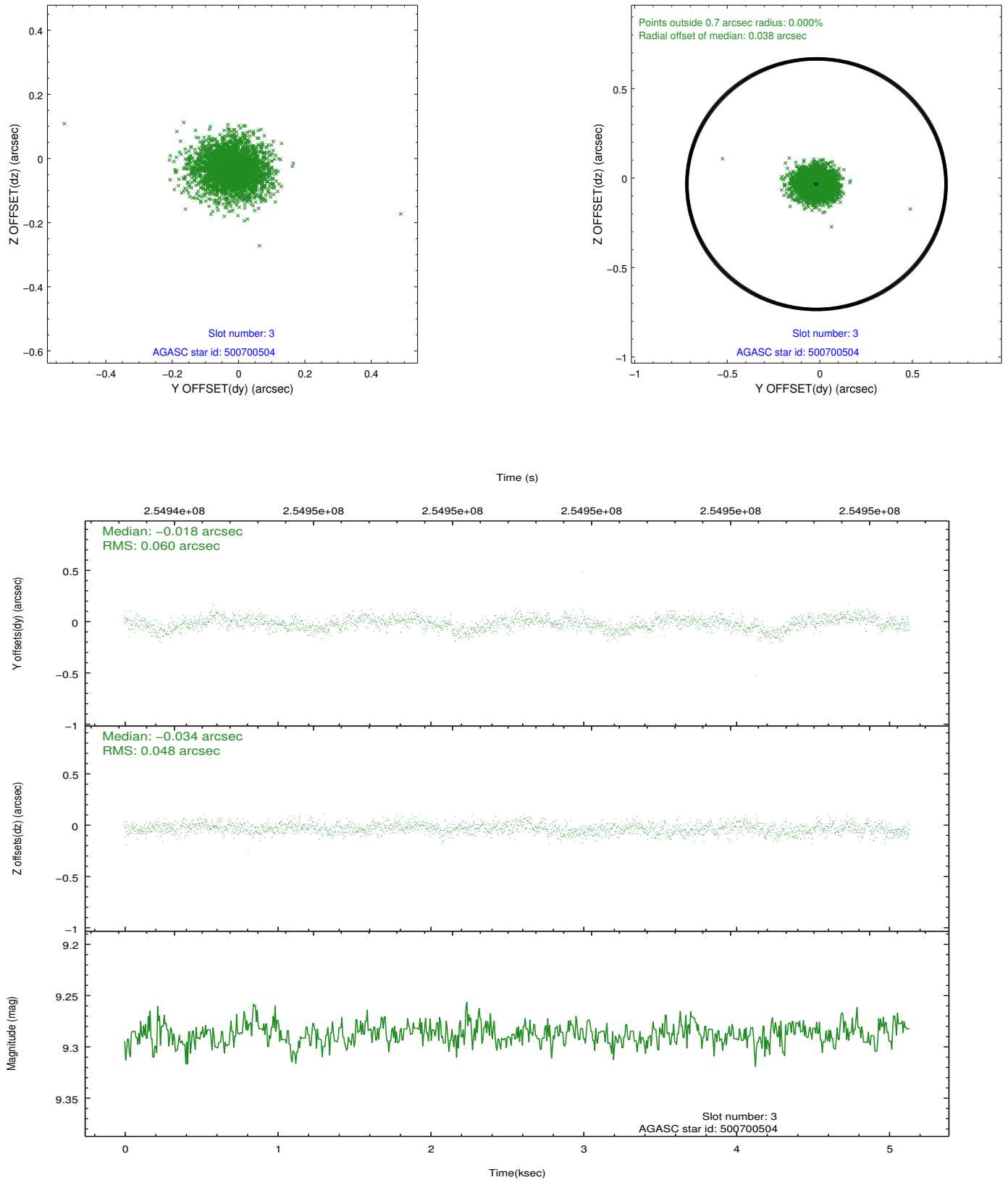


Slot Statistics

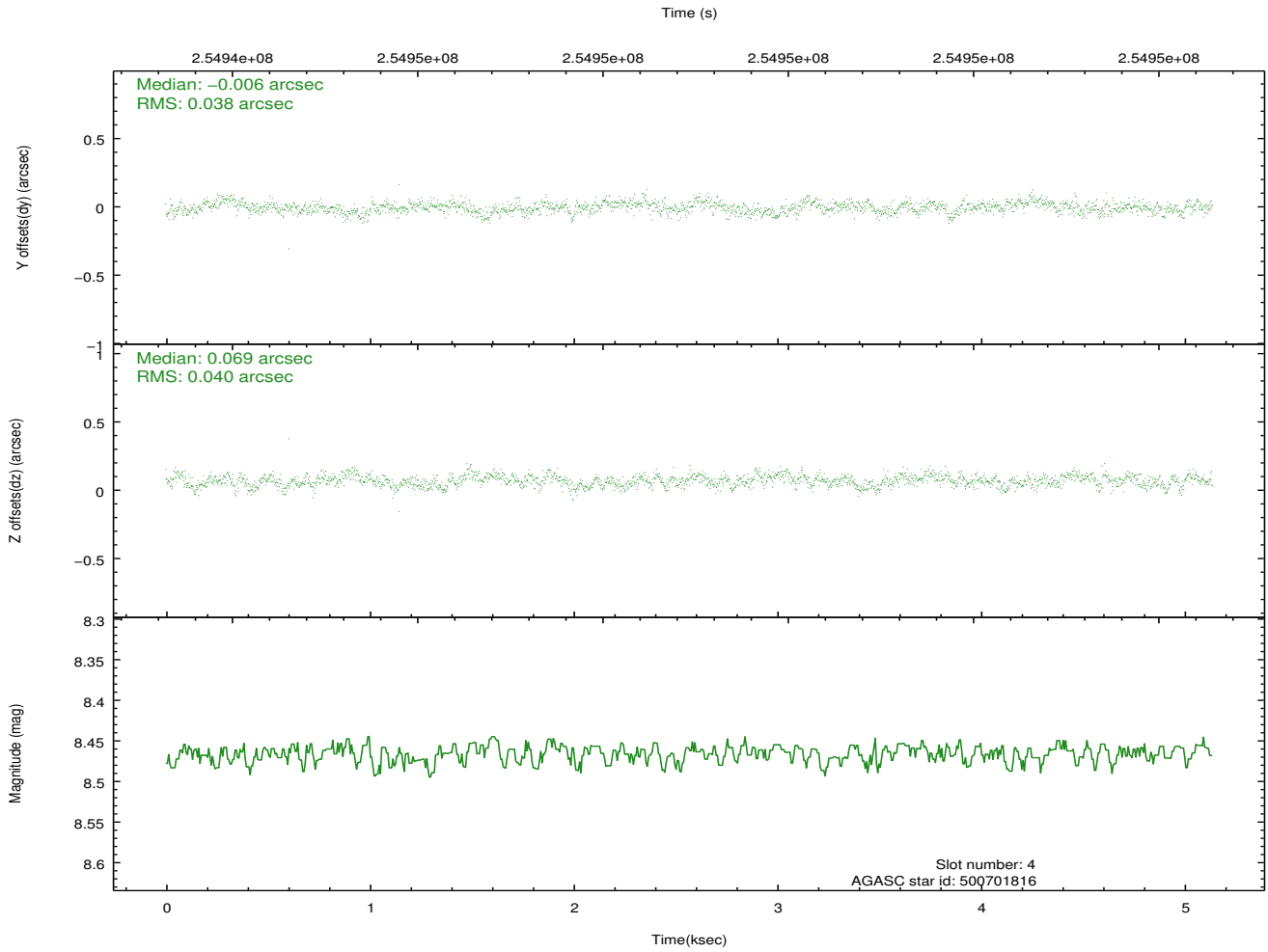
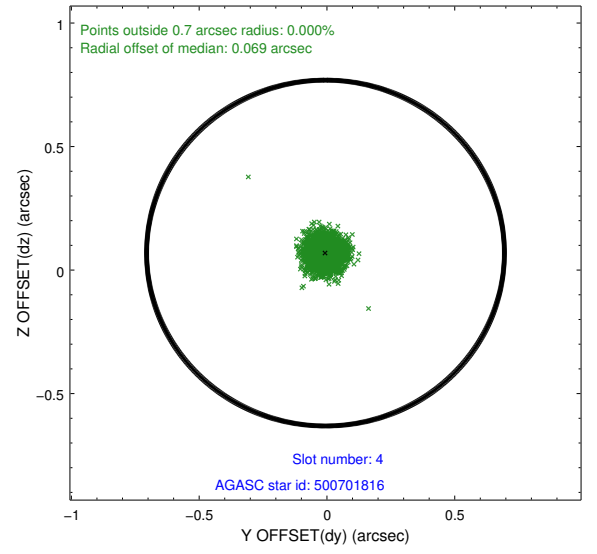
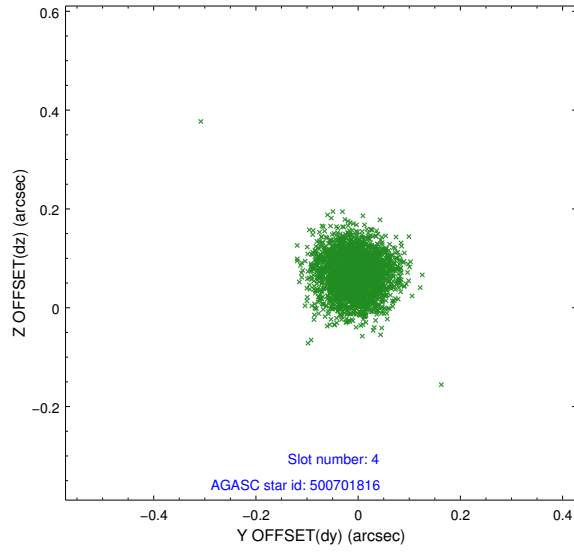
slot	status	id	mag	n_pts	med_dy	med_dz	dr1	dr2	ra	dec	mean_y	mean_z
0	FID	ACIS-S-2	7.11	1253	-0.043	-0.021	0.010	0.016	0.000000	0.000000	-761.17	-1731.86
1	FID	ACIS-S-4	7.21	1253	0.139	0.027	0.012	0.019	0.000000	0.000000	2151.71	175.53
2	FID	ACIS-S-5	7.23	1253	-0.127	0.003	0.010	0.016	0.000000	0.000000	-1812.62	170.42
3	GUIDE	500700504	9.29	2501	-0.018	-0.034	0.081	0.130	147.383772	57.878638	185.68	676.70
4	GUIDE	500701816	8.47	2507	-0.006	0.069	0.058	0.094	148.402113	58.028481	-1399.75	-572.02
5	GUIDE	500701952	7.45	2507	-0.105	-0.123	0.078	0.117	148.491481	57.683705	-2047.36	500.78
6	GUIDE	500702600	9.78	2506	0.134	-0.055	0.124	0.203	146.735019	58.123454	1662.85	324.27
7	GUIDE	500706264	8.89	2504	0.001	0.146	0.096	0.149	148.327505	58.563945	-512.03	-2289.46

2.4 Star Slots

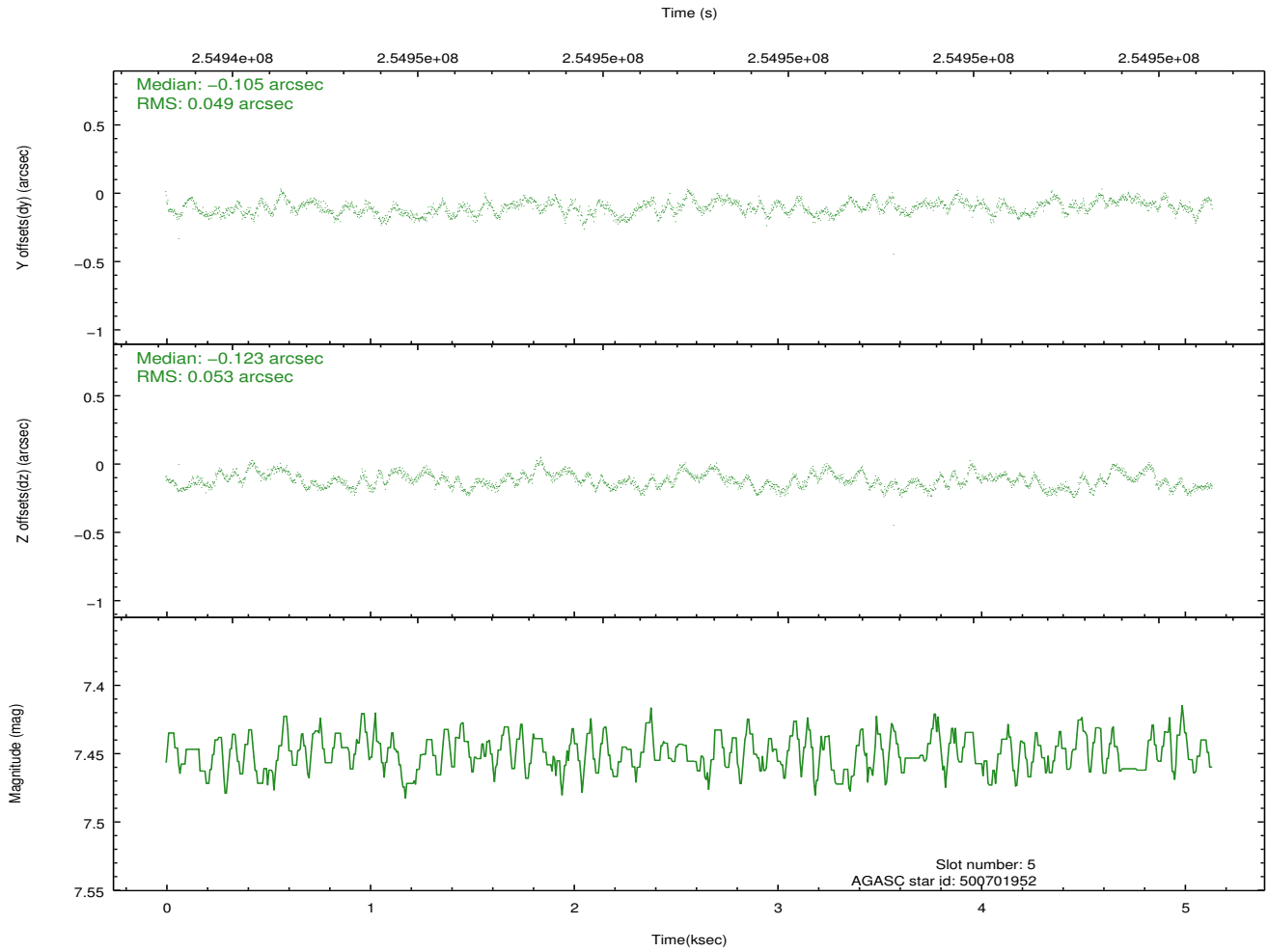
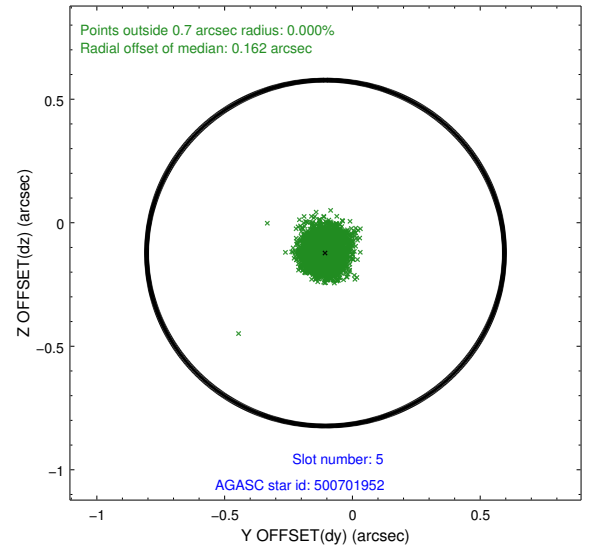
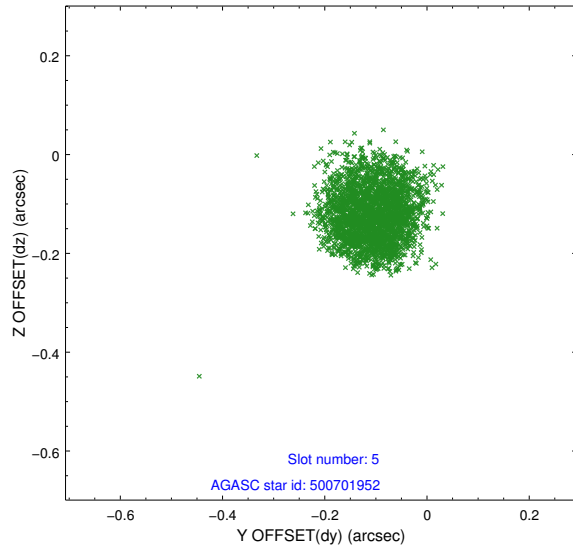
2.4.1 Slot 3



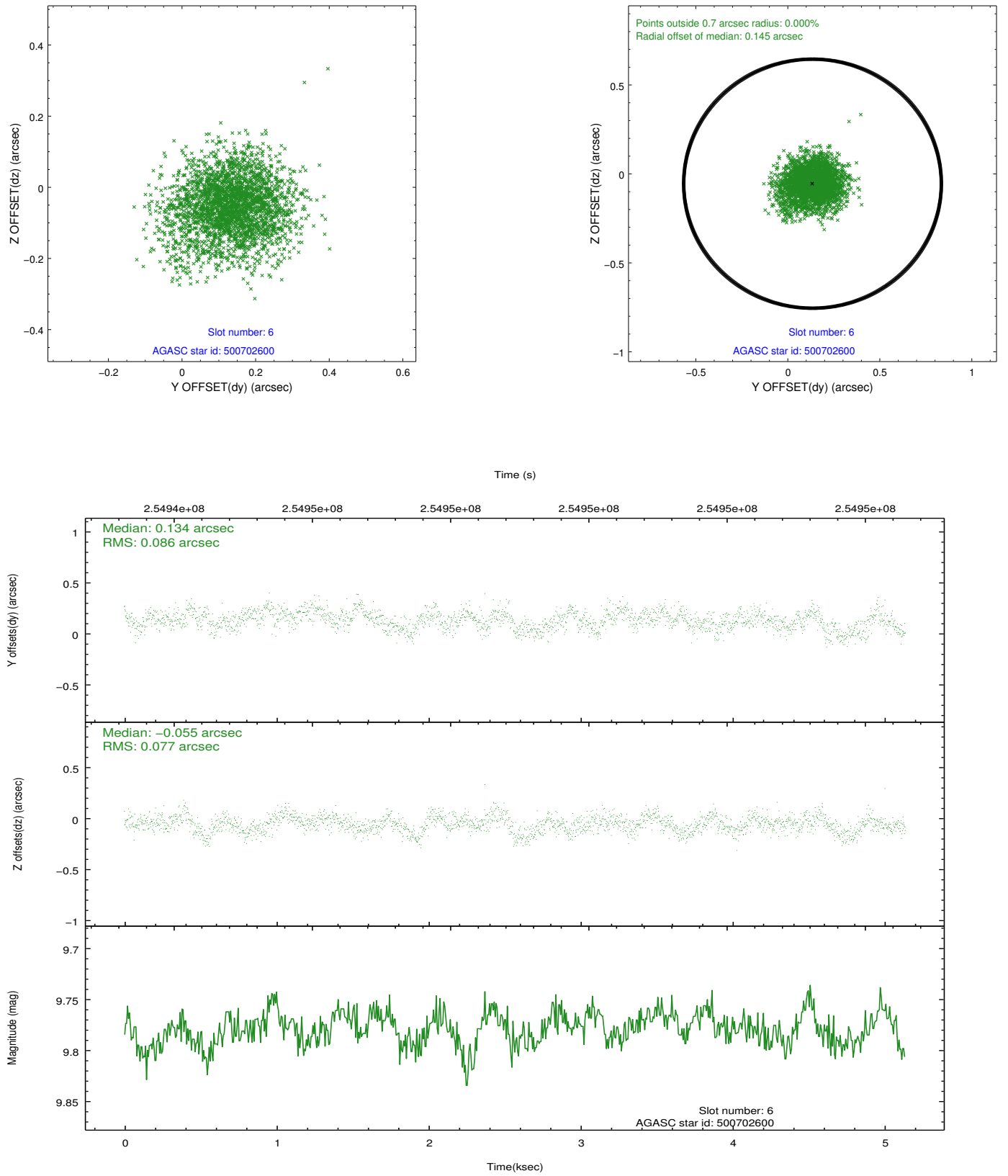
2.4.2 Slot 4



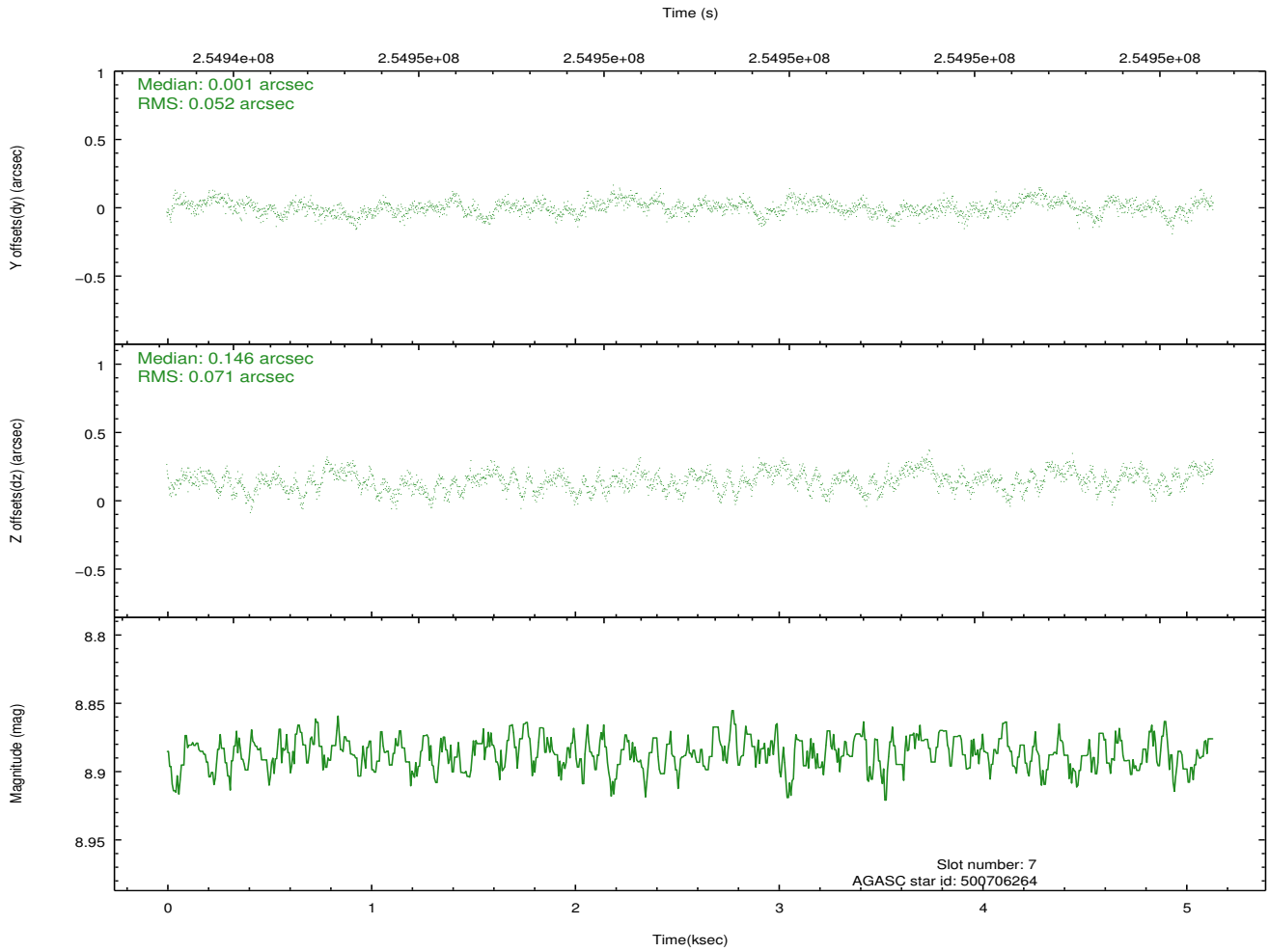
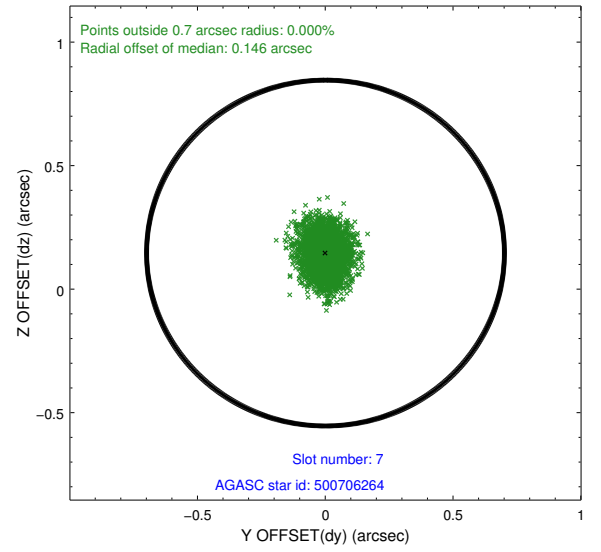
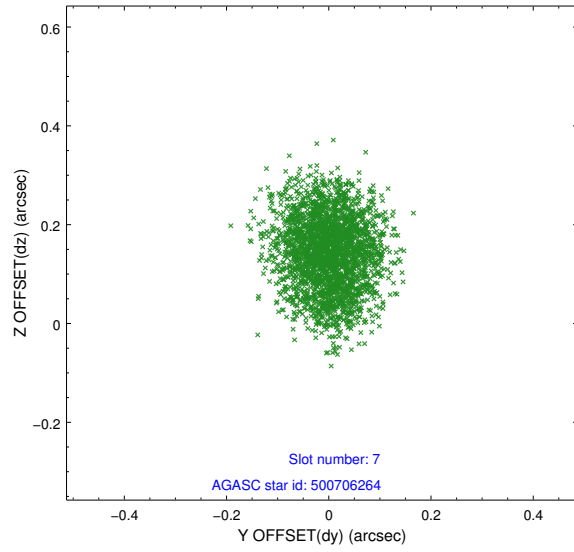
2.4.3 Slot 5



2.4.4 Slot 6

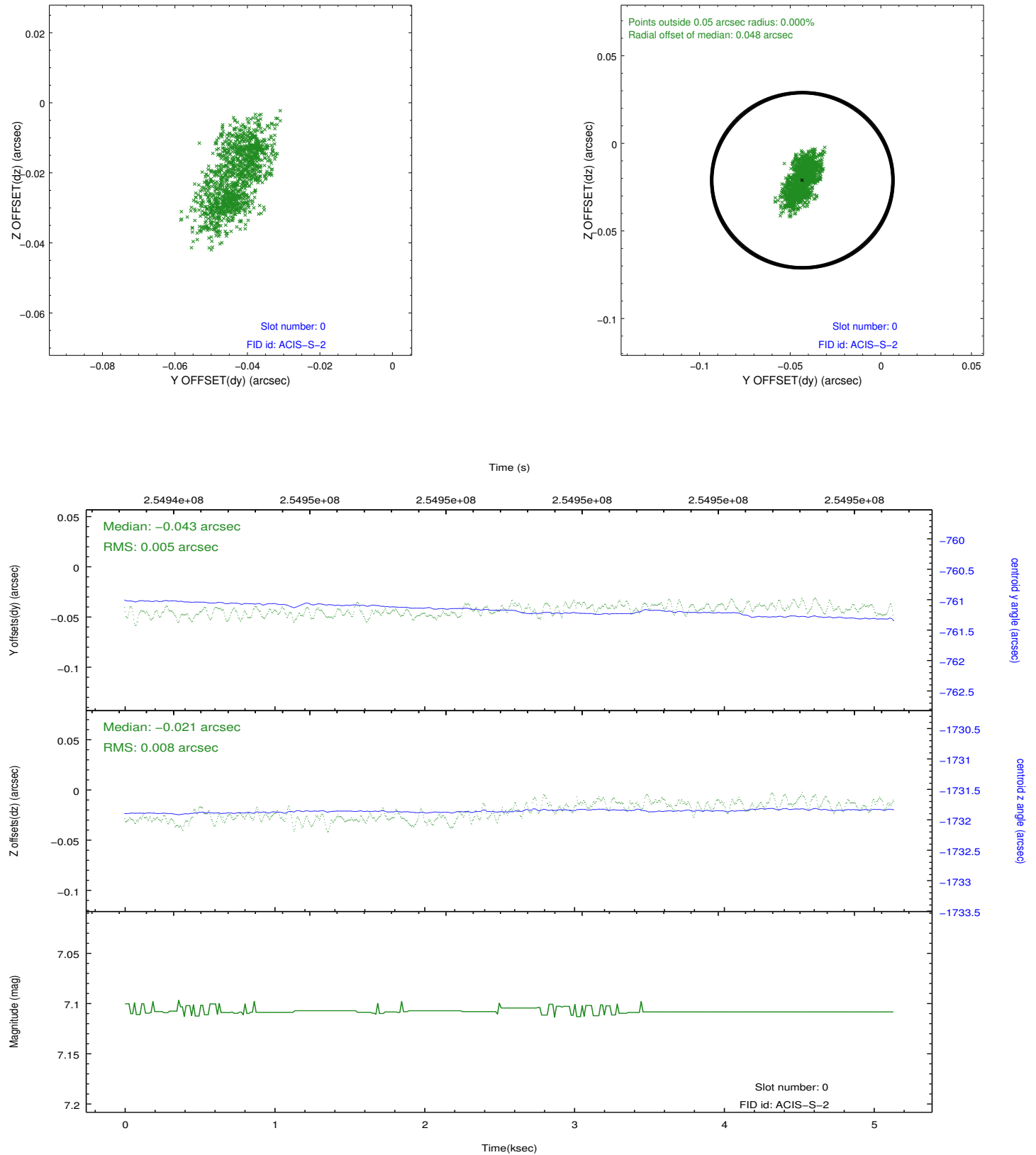


2.4.5 Slot 7

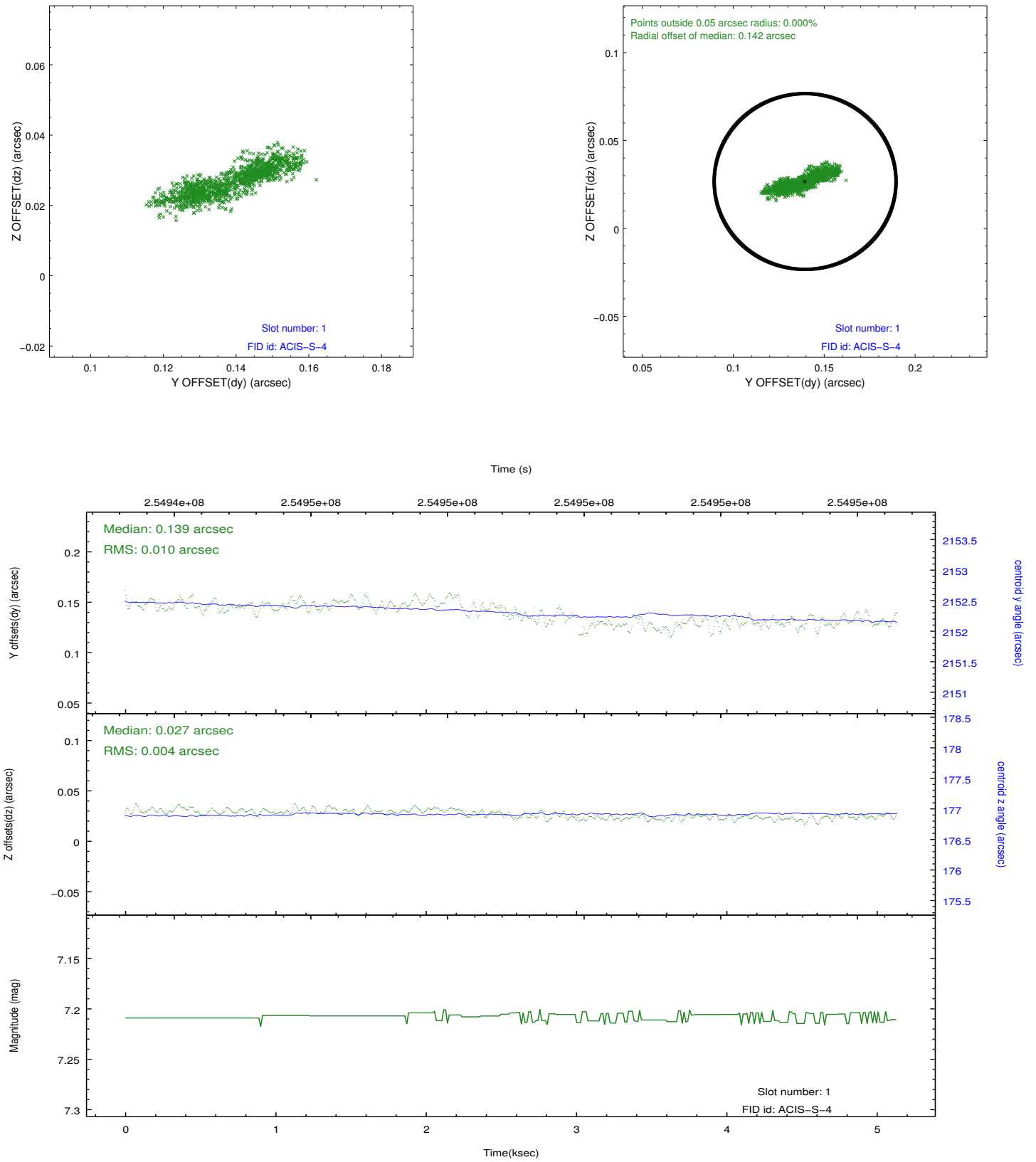


2.5 FID Slots

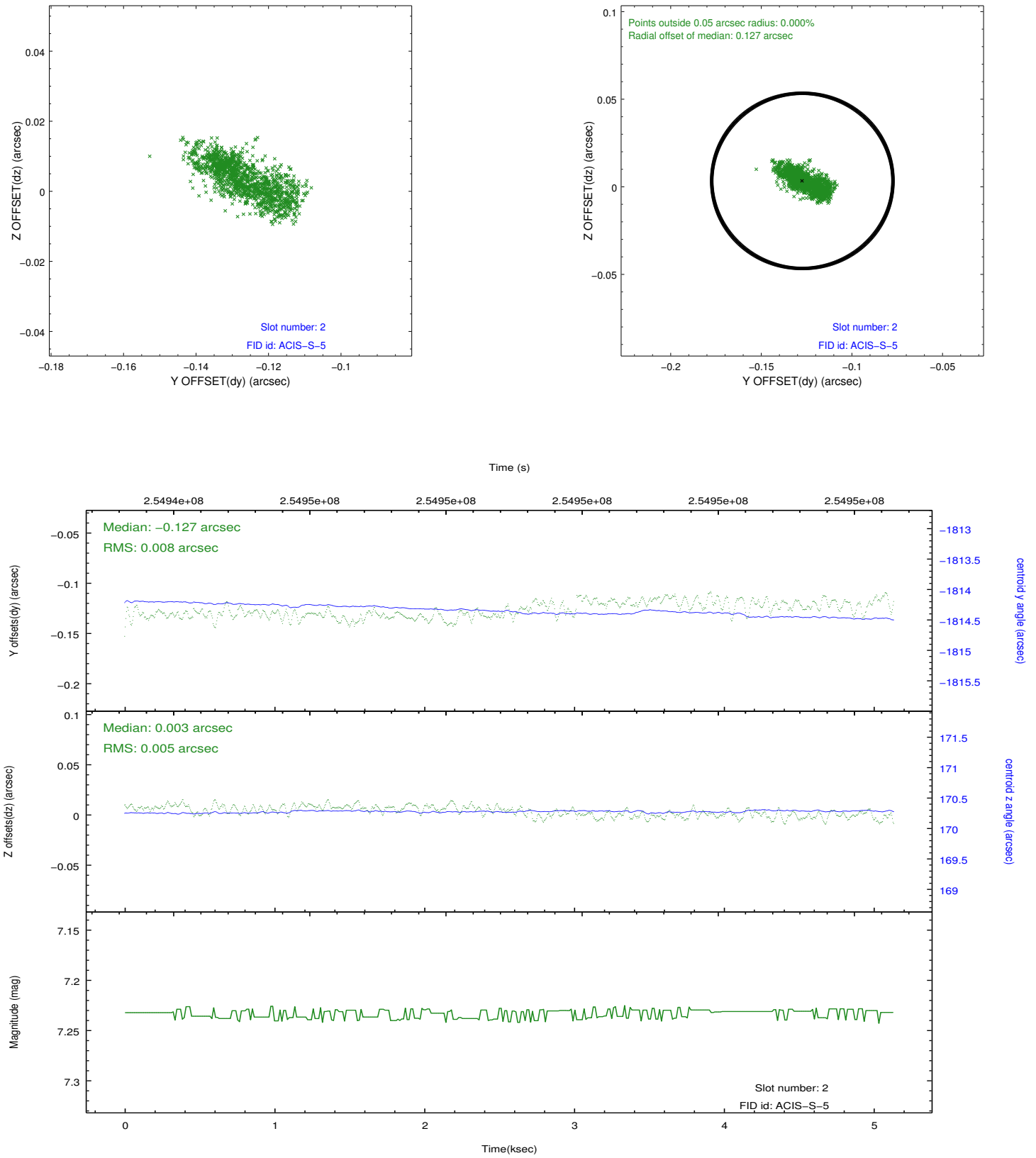
2.5.1 Slot 0



2.5.2 Slot 1



2.5.3 Slot 2



A Summary

A.1 Status

V&V Scientist	Jen Lauer
V&V Date (YYYY-MM-DD)	2012.03.26
V&V Edition	1
V&V Disposition and Status	OK
V&V Charge Time	3.95519998

A.2 Comments