

V&V Reference Report

L2 ASCDS Version : 8.4.3

Observation 6788 - L2 Version 2
Chandra X-Ray Center

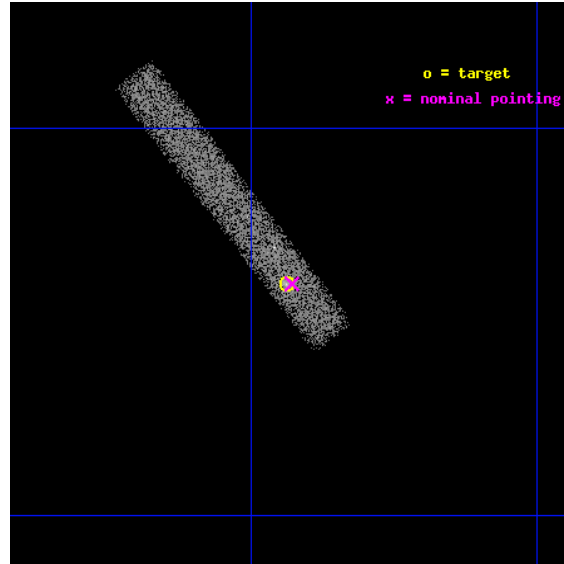
L2 Processing Date : Apr 3 2012

Contents

1	Front	2
2	OBI	3
2.1	OBI	3
2.1.1	Images	3
2.1.2	Bias	3
2.1.3	Parameters	4
2.1.4	Events	4
2.2	Compared Parameters	5
2.3	Aspect	6
2.4	Star Slots	9
2.4.1	Slot 3	9
2.4.2	Slot 4	10
2.4.3	Slot 5	11
2.4.4	Slot 6	12
2.4.5	Slot 7	13
2.5	FID Slots	14
2.5.1	Slot 0	14
2.5.2	Slot 1	15
2.5.3	Slot 2	16
A	Summary	17
A.1	Status	17
A.2	Comments	17

1 Front

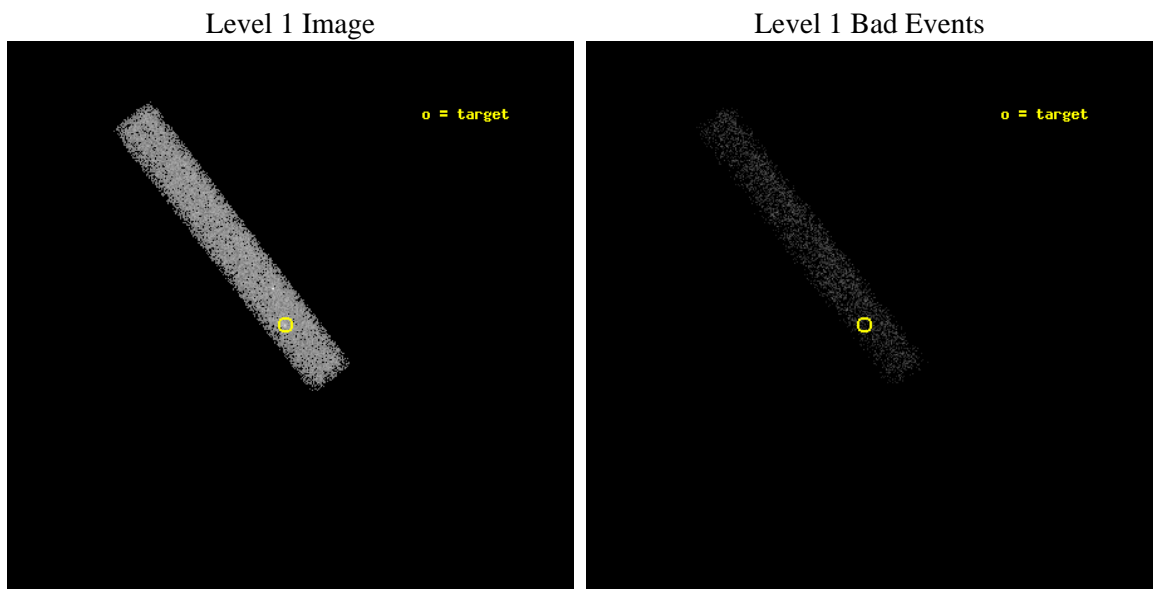
seq_num	701206	Sequence number
obs_id	6788	Observation id
title	Active Galactic Nuclei in nearby galaxies: a new view of the origin of the radio-loud radio-quiet dichotomy?	Proposal title
observer	Dr. Alessandro Capetti	Principal investigator
object	UGC9692	Source name
dtcycle	0	
cycle	P	events from which exps? Prim/Second/Both
ra_targ	226.359167	Observer's specified target RA [deg]
dec_targ	2.099444	Observer's specified target Dec [deg]
ra_nom	226.35704551934	Nominal RA [deg]
dec_nom	2.0994688009157	Nominal Dec [deg]
roll_nom	232.29853635879	Nominal Roll [deg]
revision	2	Processing version of data
ontime	15042.400224119	Sum of GTIs [s]
livetime	13642.66300029	Livetime [s]
ontime7	15042.400224119	Sum of GTIs [s]
l2events	11412	Number of level 2 events



2 OBI

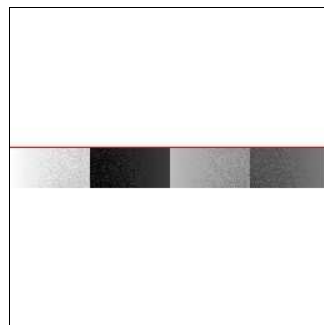
2.1 OBI

2.1.1 Images



2.1.2 Bias

Chip 7



2.1.3 Parameters

obi_num	0	Obi number	sched_exp_time	15000.000000	[s] Scheduled observation exposure time
ascdsver	8.4.3.1	Processing system revision	ontime	15042.400224119	Sum of GTIs [s]
caldsver	4.4.9	 	ontime7	15042.400224119	Sum of GTIs [s]
date	2012-04-03T11:37:21	Date and time of file creation	l1events	24904	Number of level 1 events
revision	2	Processing version of data			

2.1.4 Events

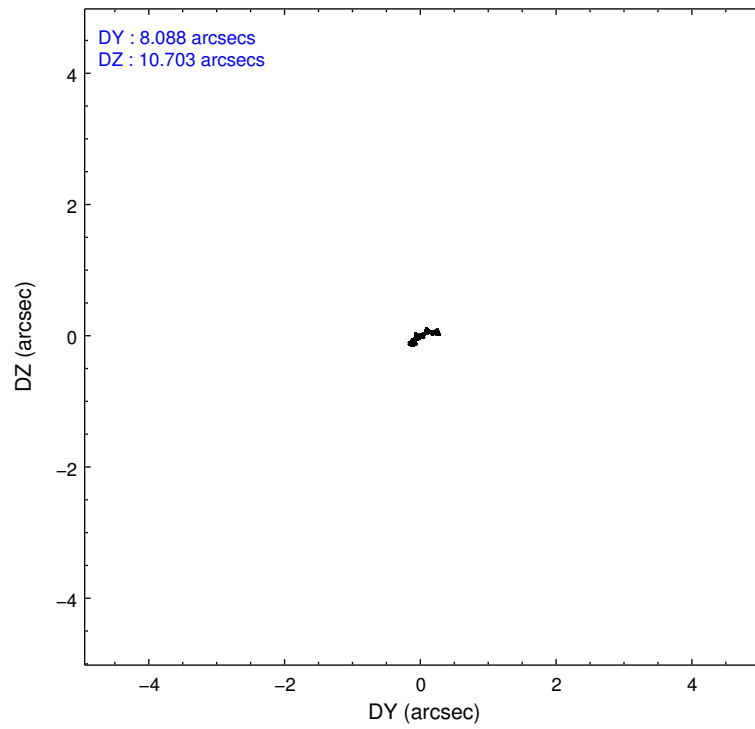
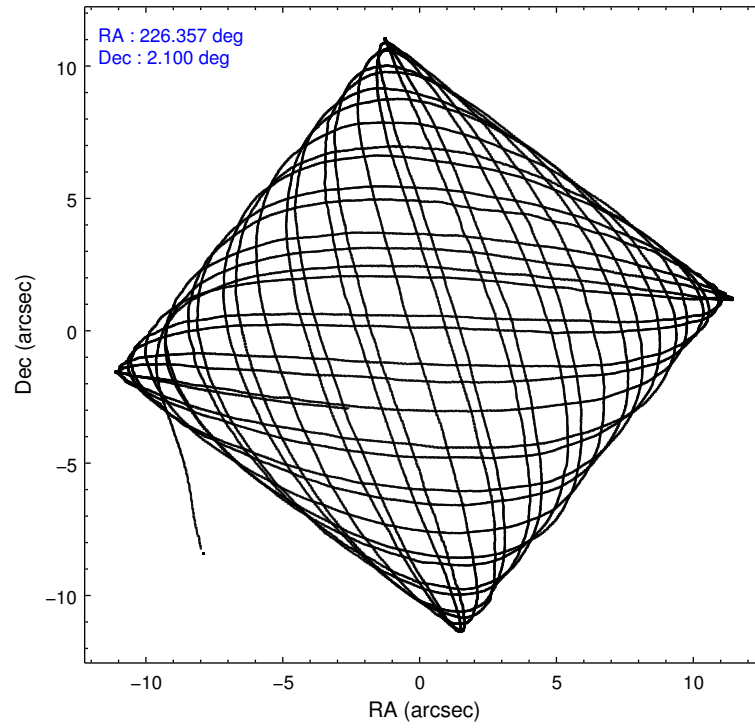
	ccd 7
level 1 events	24904
rejected events	13037
rejected %	52%

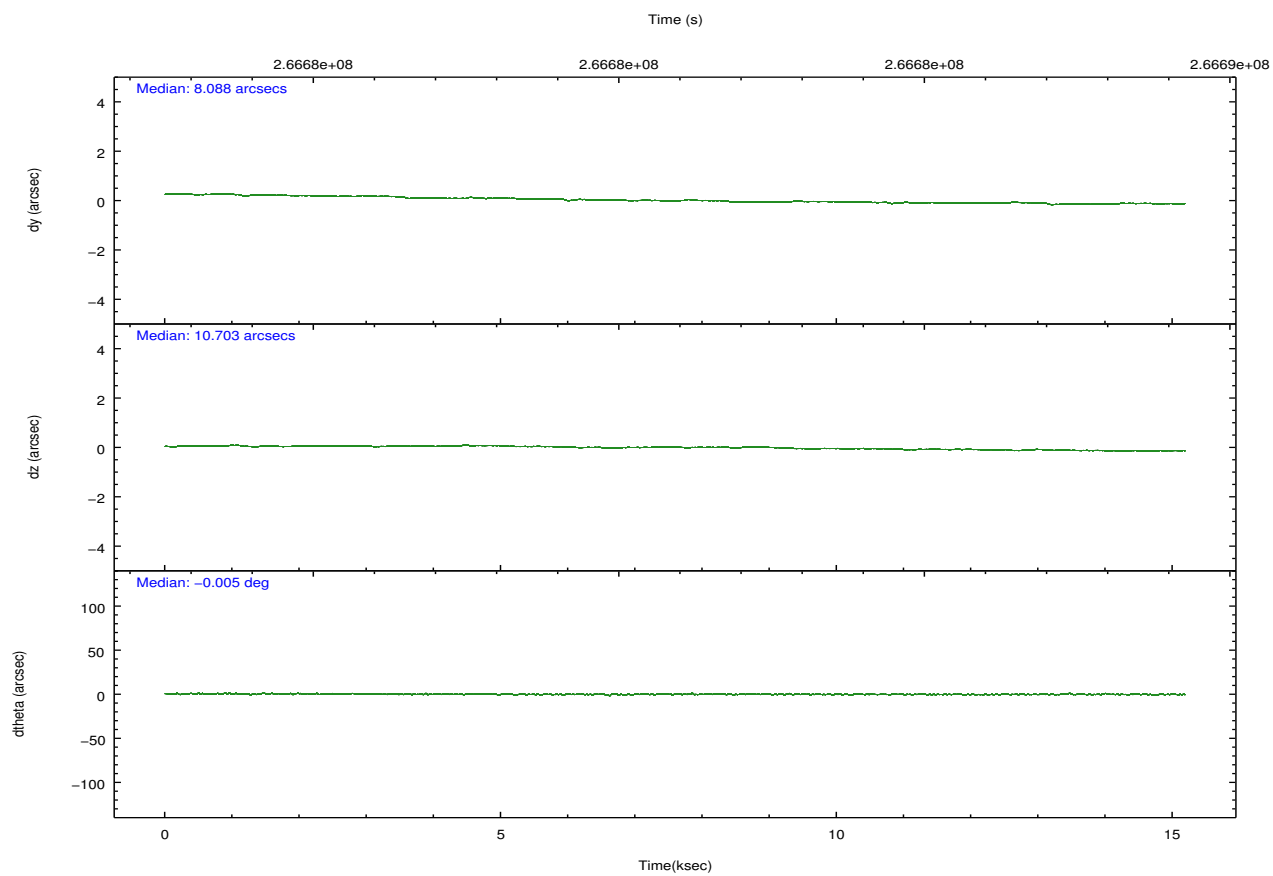
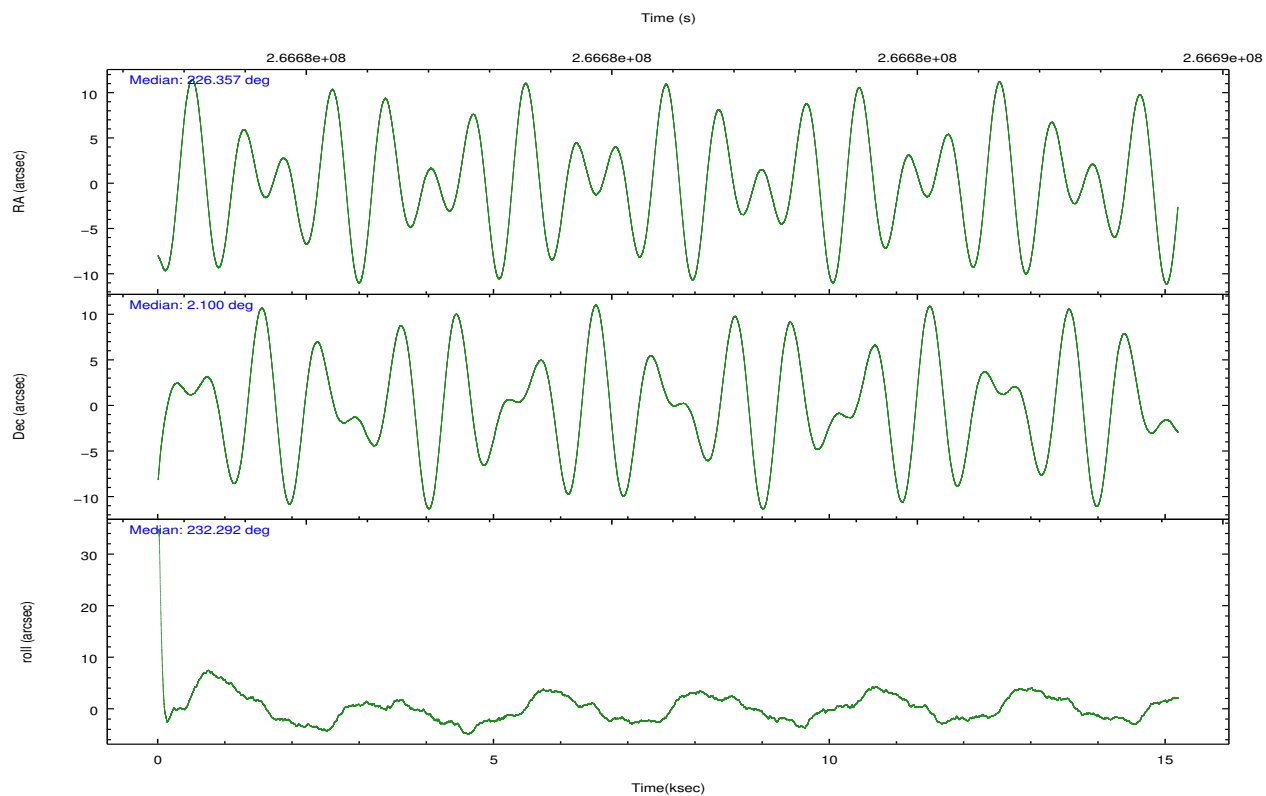
	ccd 7
grade 0 events	1382
	5%
grade 1 events	25
	0%
grade 2 events	2273
	9%
grade 3 events	1496
	6%
grade 4 events	1470
	5%
grade 5 events	2156
	8%
grade 6 events	5249
	21%
grade 7 events	10853
	43%

2.2 Compared Parameters

Parameter	Planned	Actual	Parameter	Planned	Actual
Instrument	ACIS	ACIS	Obspar format version number	7	7
Detector	ACIS-7	ACIS-7	Obspar file type	PREDICTED	ACTUAL
Grating	NONE	NONE	Obspar update status	NONE	UPDATED
Data mode	VFAINT	VFAINT	Number of optional ACIS chips dropped	0	0
Observation mode	POINTING	POINTING	On-chip summing requested	N	N
[deg] Pointing RA	226.360366	226.3570455193358	Subarray requested	CUSTOM	1/8
[deg] Pointing Dec	2.126516	2.099468800915656	Subarray start row	449	449
[deg] Pointing Roll	232.141750	232.2985363587865	Subarray row count	128	128
[mm] SIM focus pos	-0.684267	-0.6828225247311905	Alternating exposures requested	N	N
[mm] SIM defocus	0	0.001444936568705701	[s] Primary exposure time	0.000000	0.4
[mm] SIM translation stage pos	-190.132523	-190.1400660498719			
[mm] SIM translation stage offset	0	0.00754346686406393			
[s] Observation start time (MET)	266673520.184000	266672911.75231			
Observation start date	2006-06-14T11:57:35	2006-06-14T11:48:31			
[s] Observation end time (MET)	266688520.184000	266689370.17808			
Observation end date	2006-06-14T16:07:35	2006-06-14T16:22:50			
Read mode	TIMED	TIMED			

2.3 Aspect



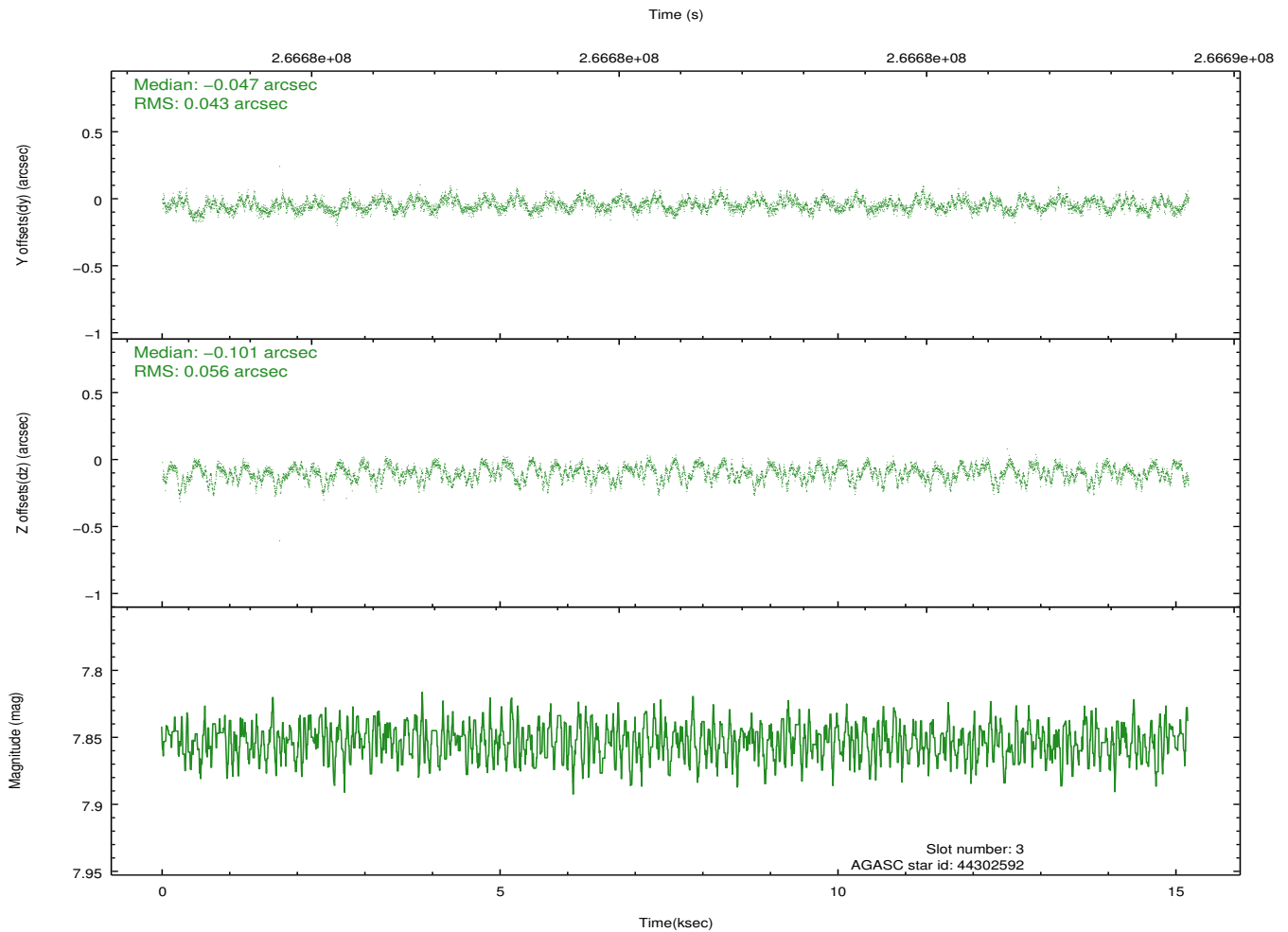
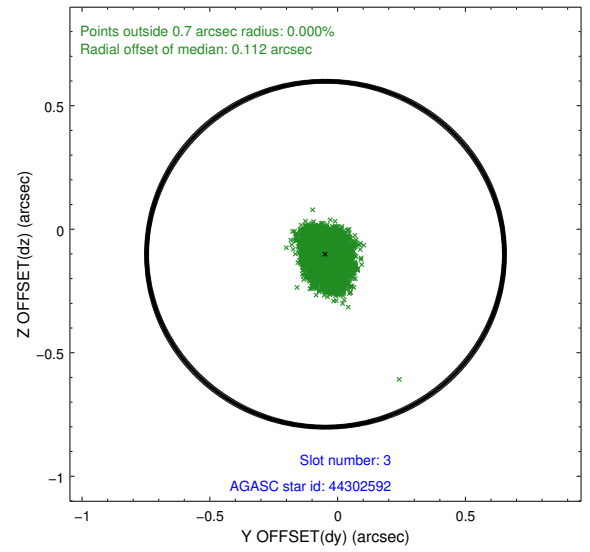
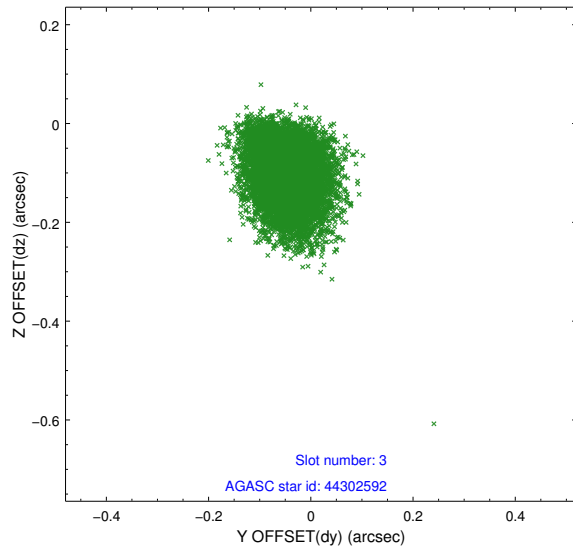


Slot Statistics

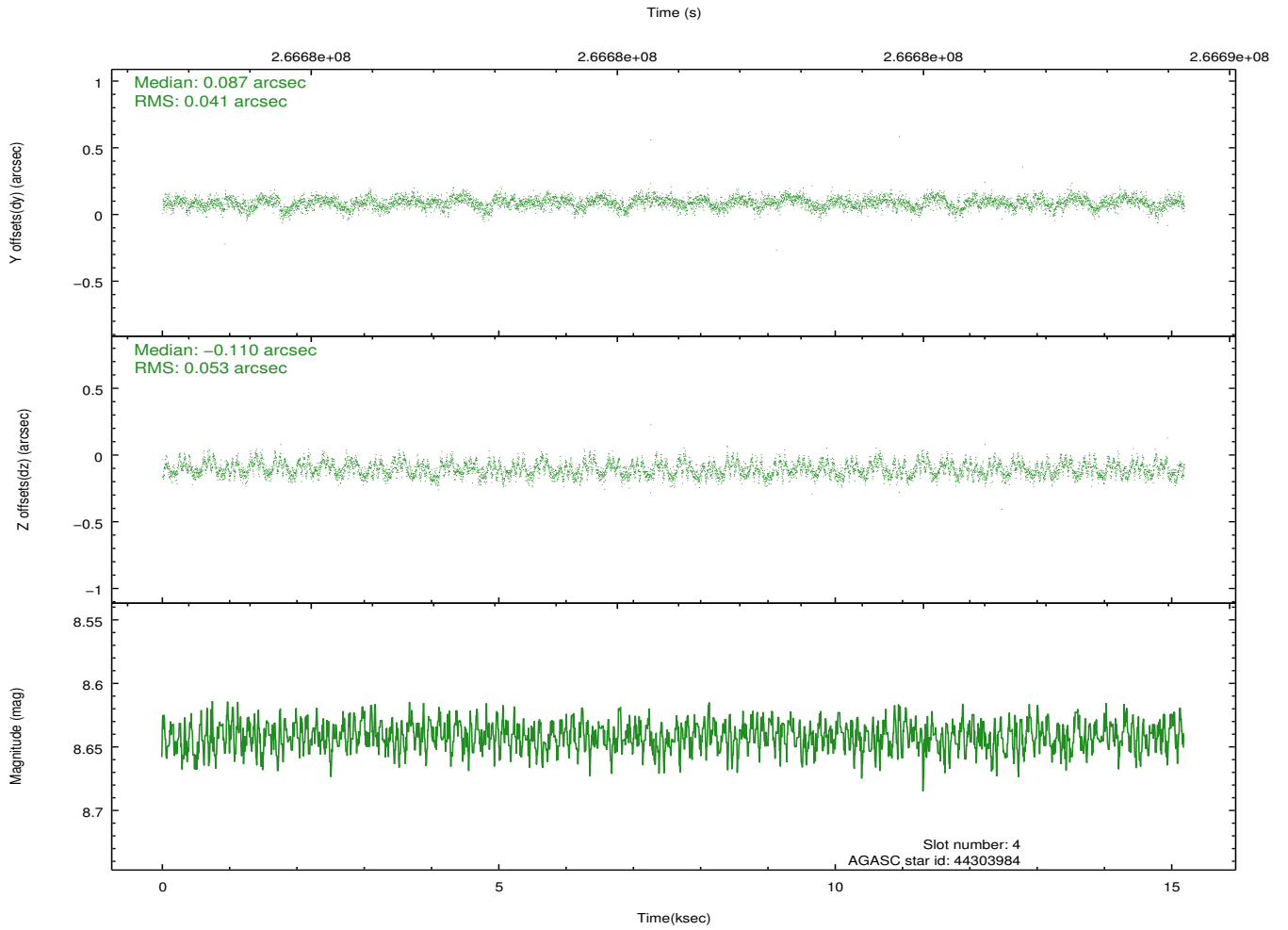
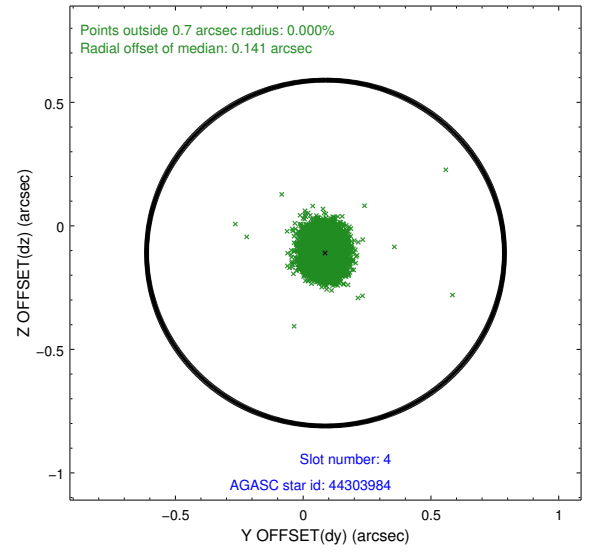
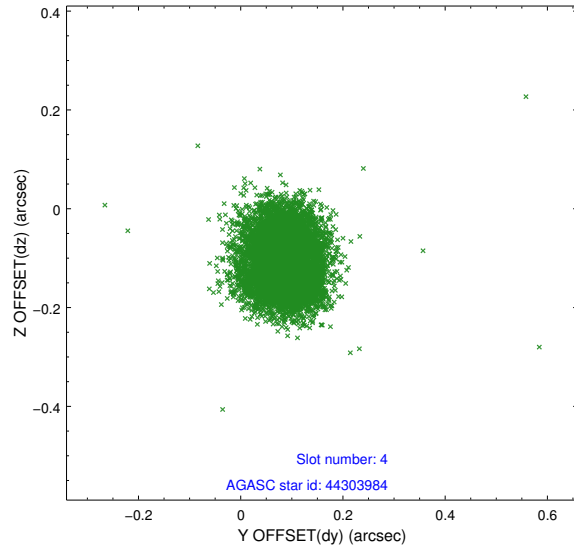
slot	status	id	mag	n_pts	med_dy	med_dz	dr1	dr2	ra	dec	mean_y	mean_z
0	FID	ACIS-S-2	7.11	3703	-0.050	-0.030	0.008	0.021	0.000000	0.000000	-760.90	-1732.00
1	FID	ACIS-S-4	7.21	3704	0.145	0.032	0.010	0.020	0.000000	0.000000	2152.39	176.31
2	FID	ACIS-S-5	7.23	3704	-0.126	0.006	0.009	0.016	0.000000	0.000000	-1813.48	170.19
3	GUIDE	44302592	7.85	7407	-0.047	-0.101	0.075	0.119	226.320439	2.016885	400.35	128.89
4	GUIDE	44303984	8.64	7402	0.087	-0.110	0.071	0.113	225.918266	2.386308	238.02	-1829.30
5	GUIDE	44304040	8.10	7402	0.035	0.115	0.056	0.090	225.823407	2.372575	486.33	-2068.45
6	GUIDE	44305256	9.14	7399	-0.006	0.013	0.068	0.112	226.603465	2.661871	-2057.56	-492.80
7	GUIDE	44305696	8.97	7400	-0.065	0.086	0.068	0.110	226.640736	2.617122	-2013.03	-287.90

2.4 Star Slots

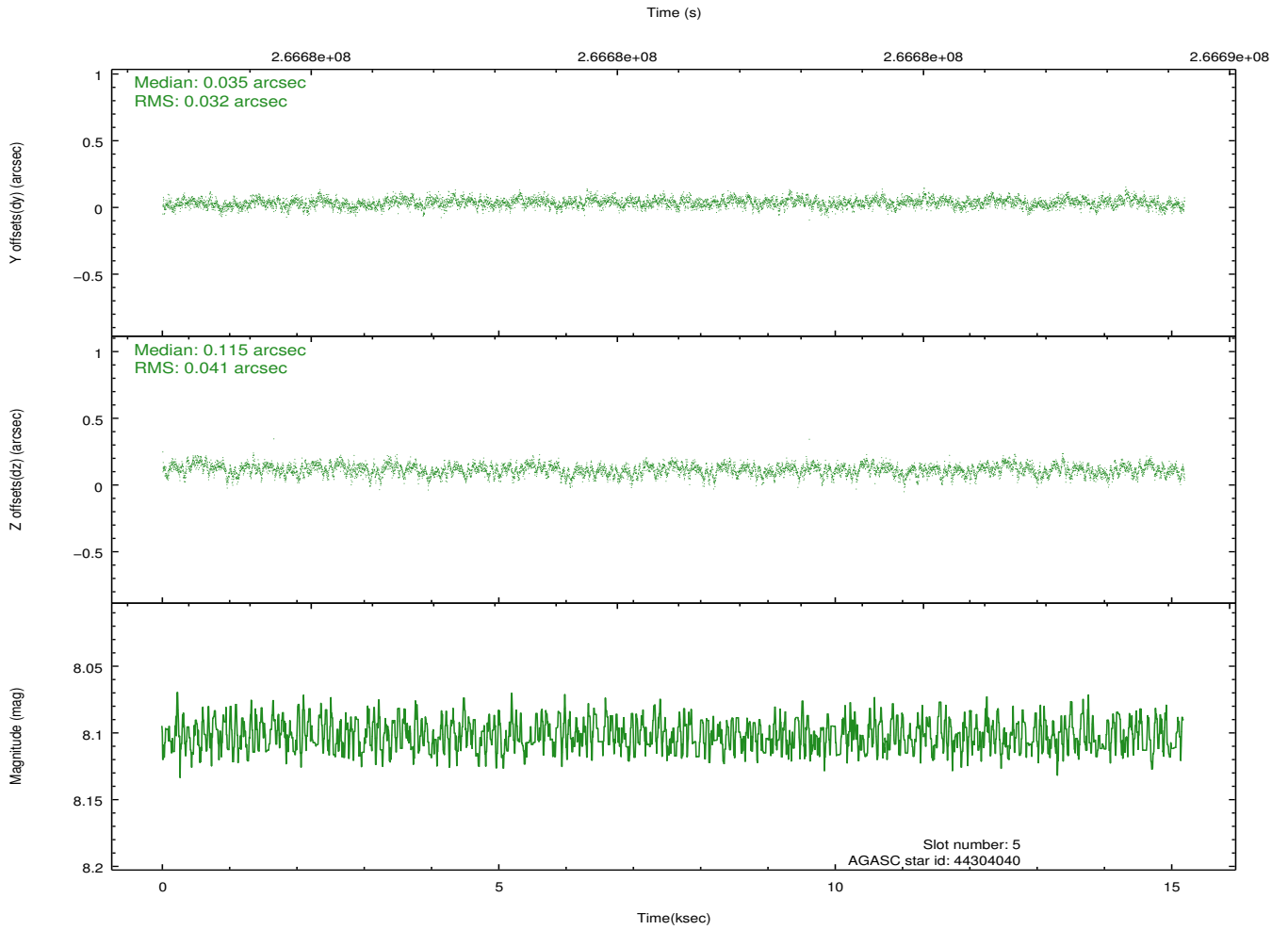
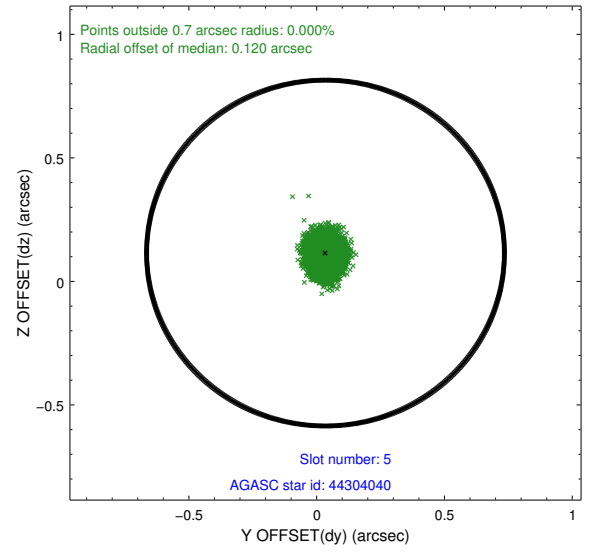
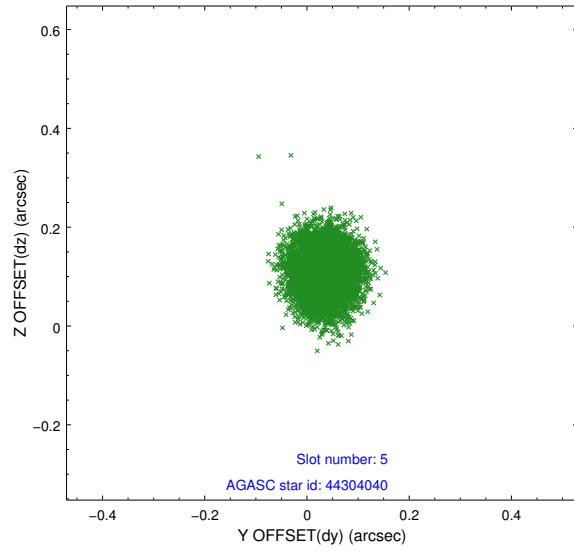
2.4.1 Slot 3



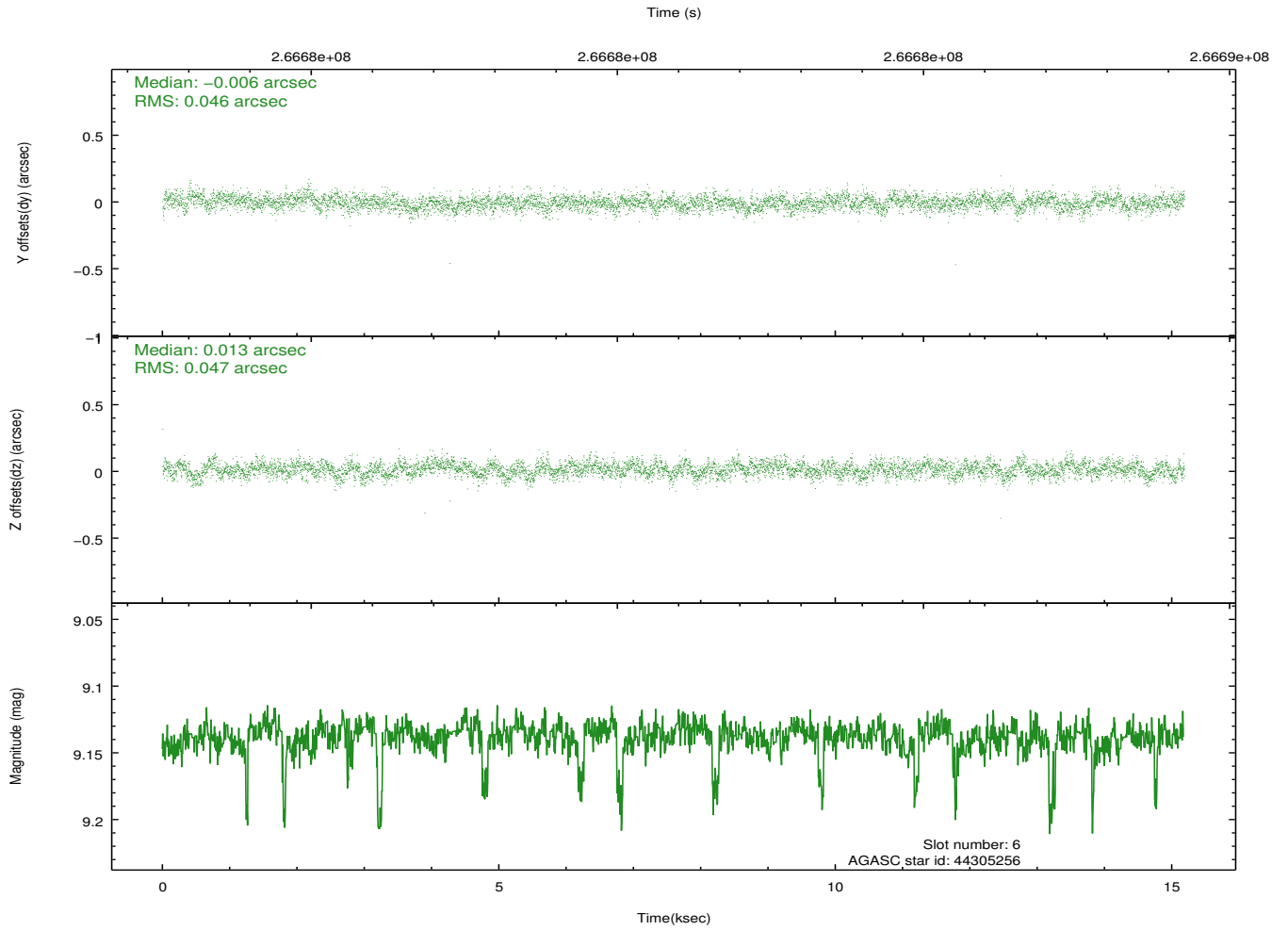
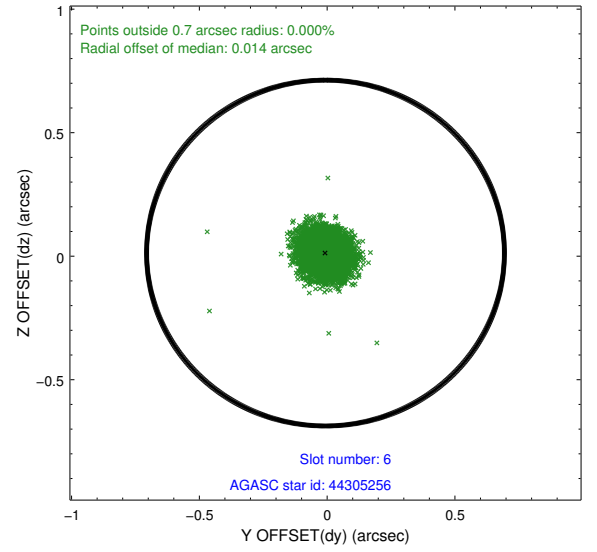
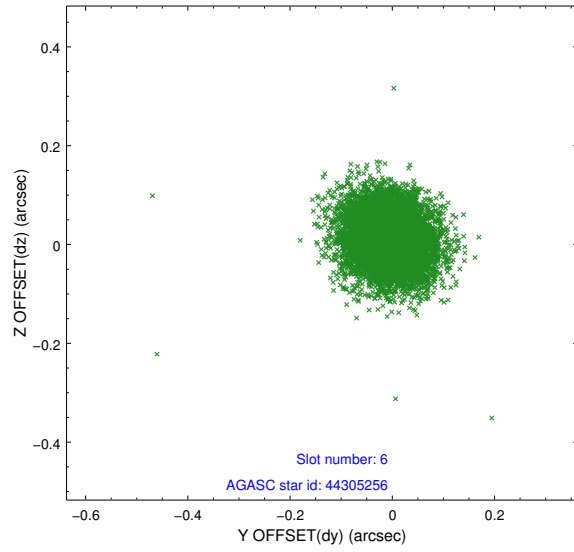
2.4.2 Slot 4



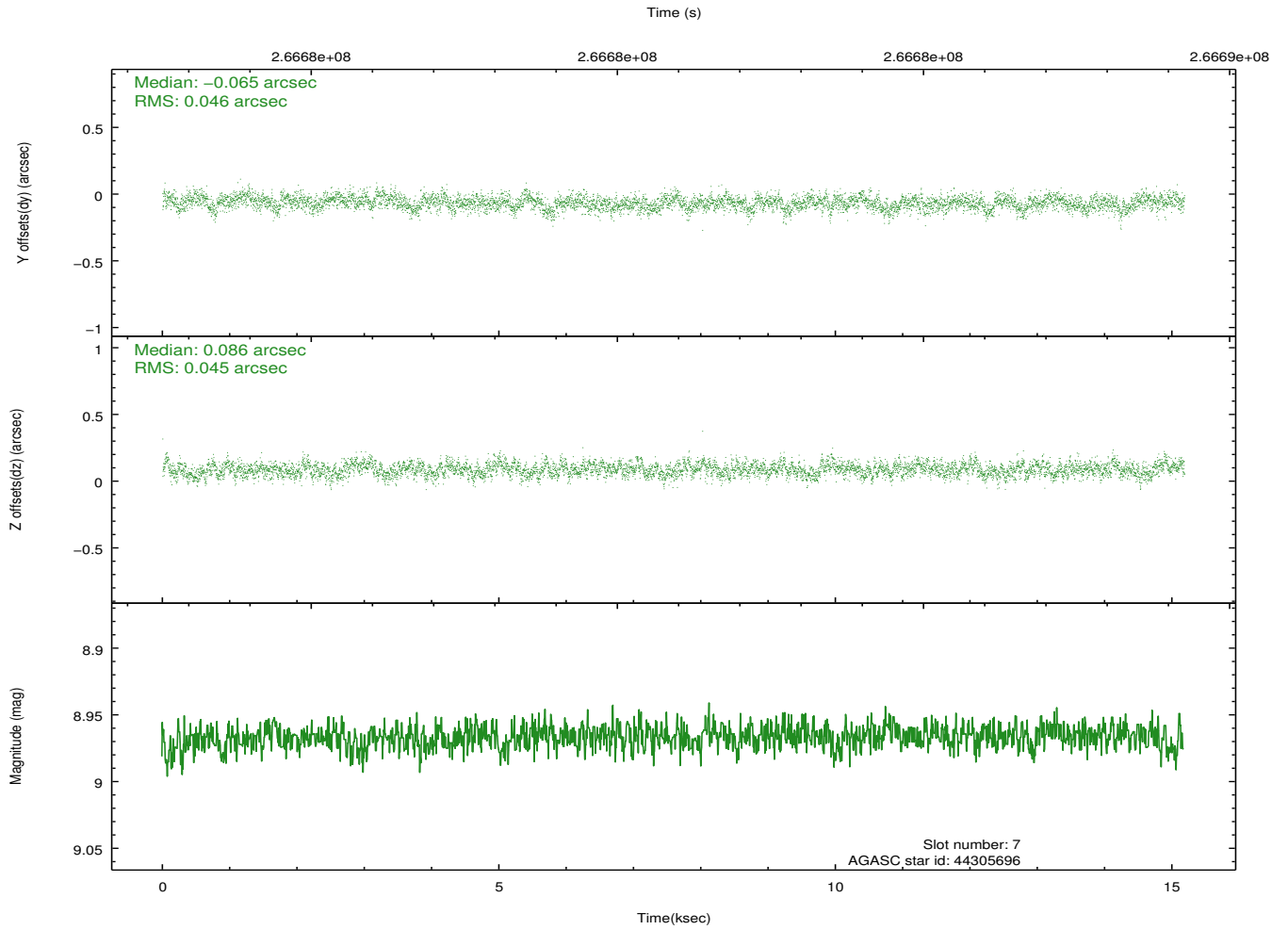
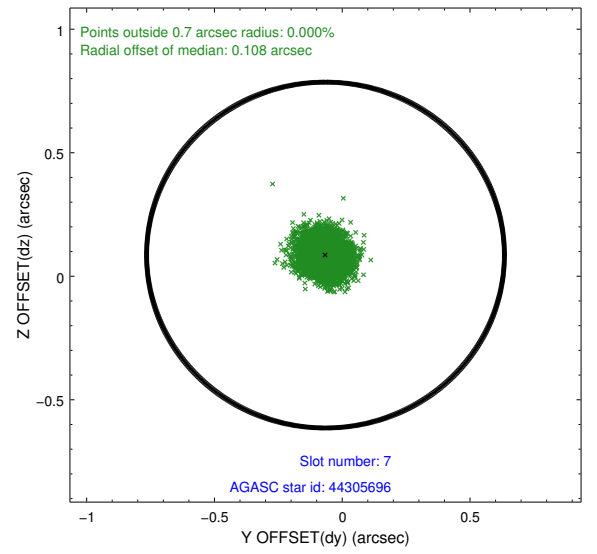
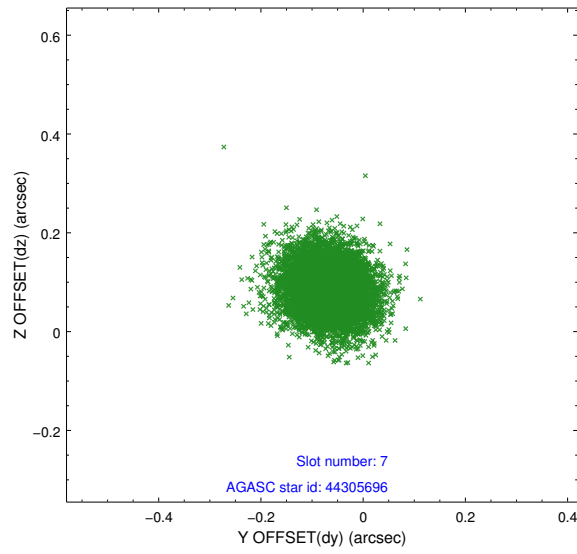
2.4.3 Slot 5



2.4.4 Slot 6

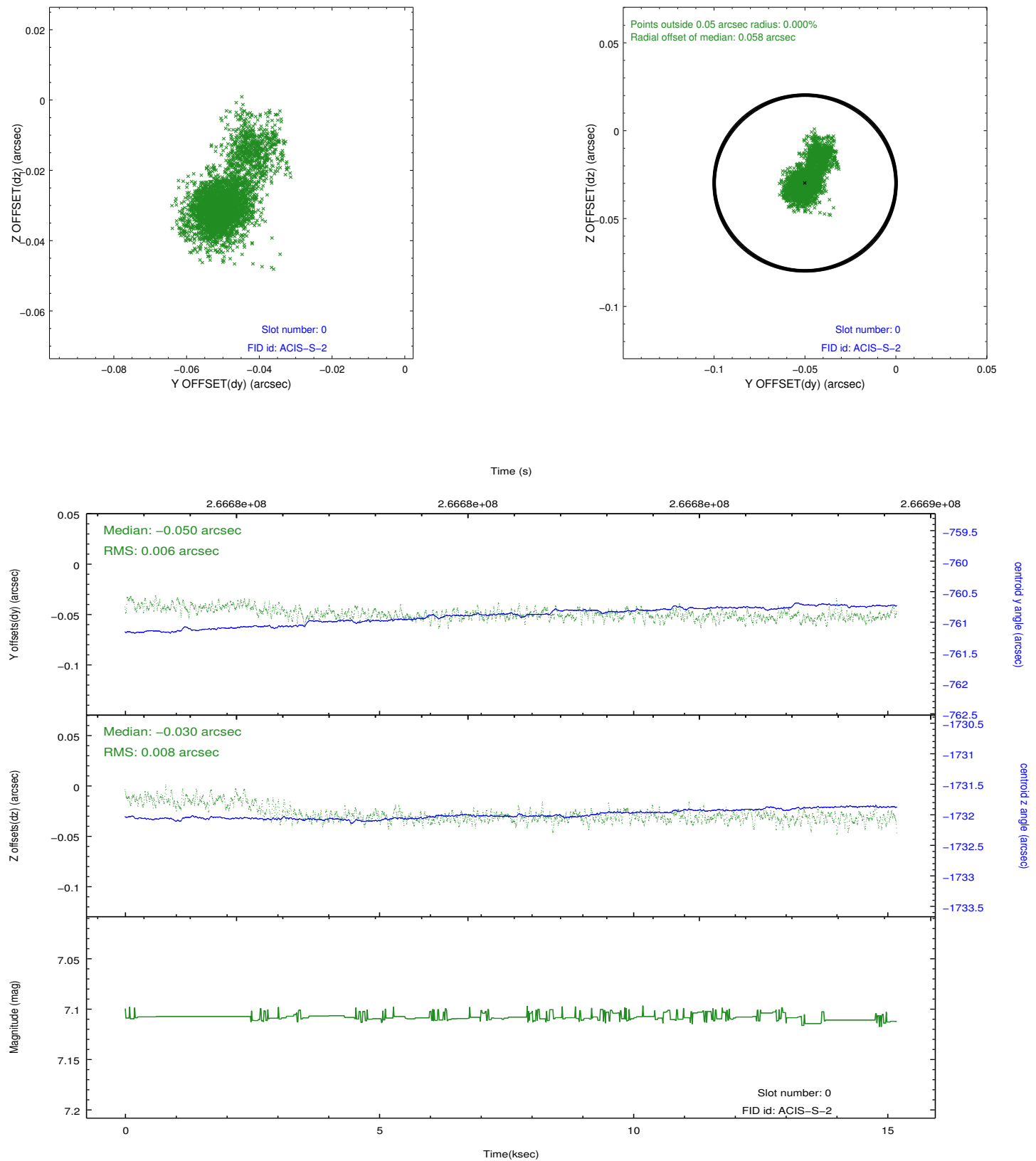


2.4.5 Slot 7

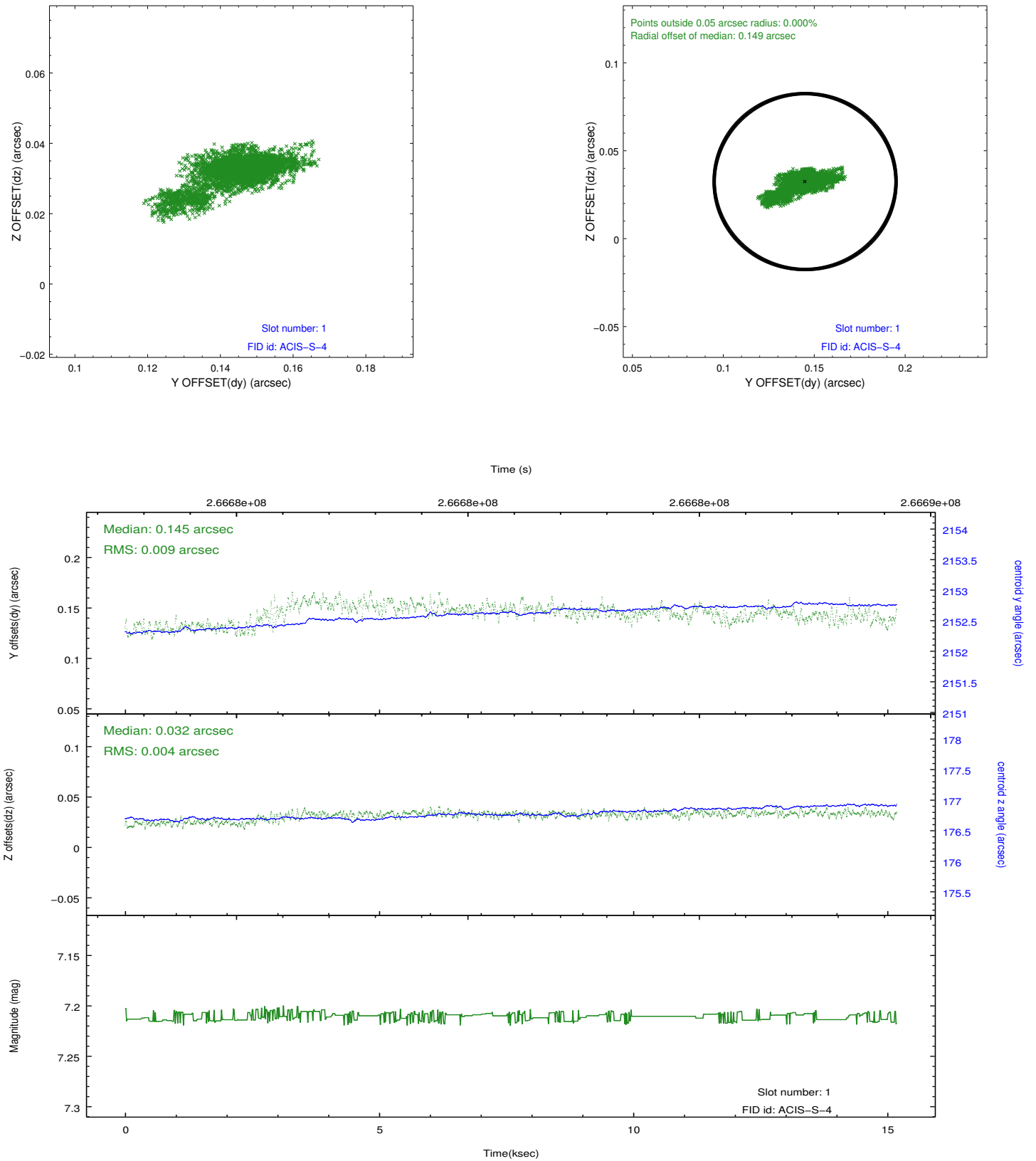


2.5 FID Slots

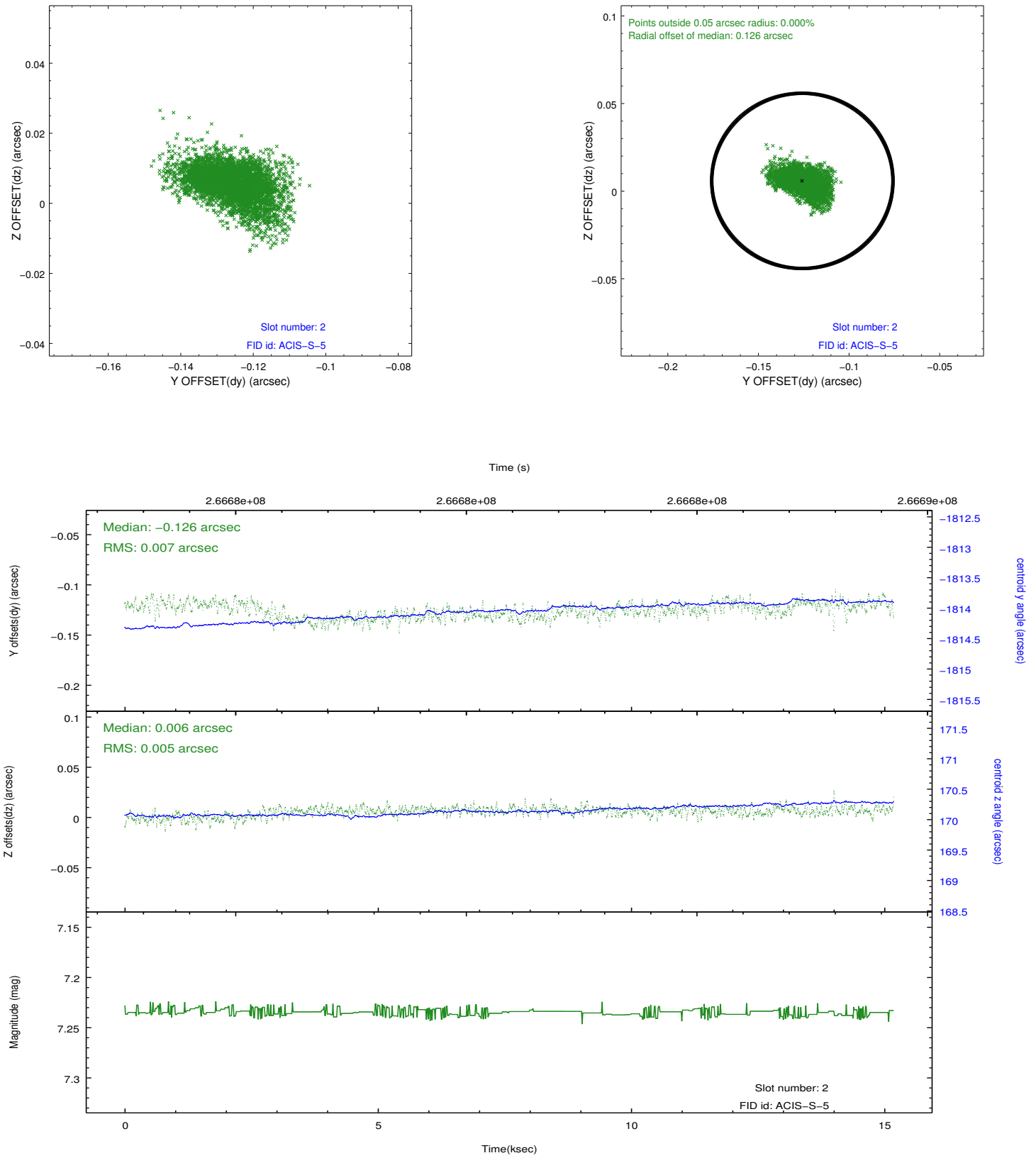
2.5.1 Slot 0



2.5.2 Slot 1



2.5.3 Slot 2



A Summary

A.1 Status

V&V Scientist	Jen Lauer
V&V Date (YYYY-MM-DD)	2012.04.04
V&V Edition	1
V&V Disposition and Status	OK
V&V Charge Time	15.0424002

A.2 Comments