

V&V Reference Report

L2 ASCDS Version : 8.4.3.1

Observation 6688 - L2 Version 2
Chandra X-Ray Center

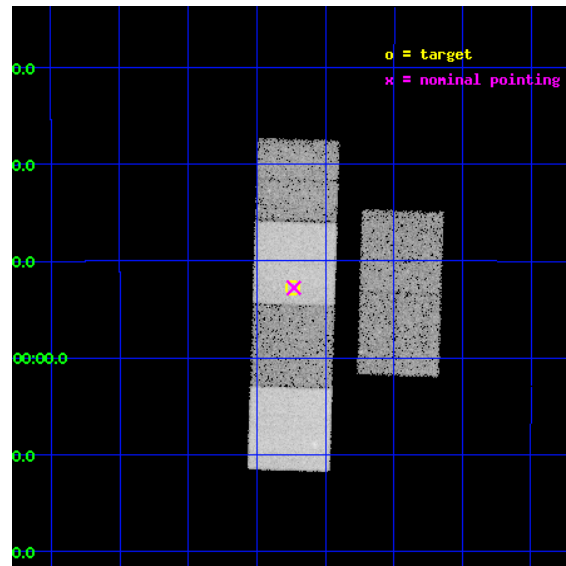
L2 Processing Date : Apr 10 2012

Contents

1	Front	2
2	OBI	3
2.1	OBI	3
2.1.1	Images	3
2.1.2	Bias	3
2.1.3	Parameters	4
2.1.4	Events	4
2.2	Compared Parameters	5
2.3	Aspect	6
2.4	Star Slots	9
2.4.1	Slot 3	9
2.4.2	Slot 4	10
2.4.3	Slot 5	11
2.4.4	Slot 6	12
2.4.5	Slot 7	13
2.5	FID Slots	14
2.5.1	Slot 0	14
2.5.2	Slot 1	15
2.5.3	Slot 2	16
A	Summary	17
A.1	Status	17
A.2	Comments	17

1 Front

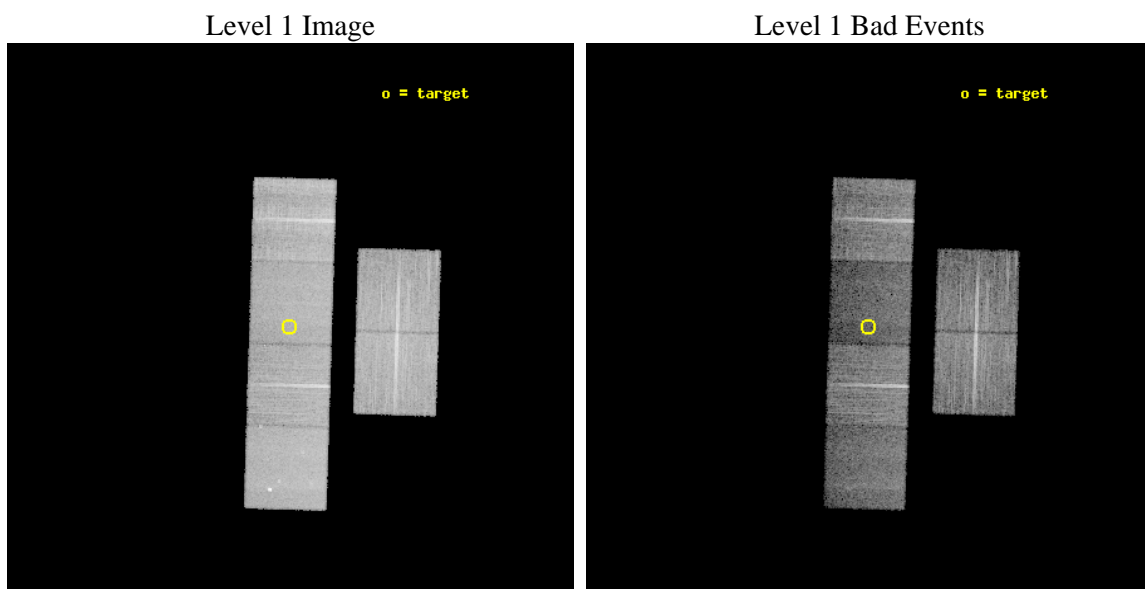
seq_num	500639	Sequence number
obs_id	6688	Observation id
title	After CAS A: A Search for the Youngest Supernova Remnants in the Galaxy	Proposal title
observer	Prof. David Helfand	Principal investigator
object	G13.9-0.0	Source name
dtcycle	0	
cycle	P	events from which exps? Prim/Second/Both
ra_targ	273.934167	Observer's specified target RA [deg]
dec_targ	-16.878333	Observer's specified target Dec [deg]
ra_nom	273.93249580884	Nominal RA [deg]
dec_nom	-16.879604015459	Nominal Dec [deg]
roll_nom	271.74317925406	Nominal Roll [deg]
revision	2	Processing version of data
ontime	13541.086940169	Sum of GTIs [s]
livetime	13369.621543869	Livetime [s]
ontime2	13537.887009859	Sum of GTIs [s]
ontime3	13540.963820159	Sum of GTIs [s]
ontime5	13541.045900166	Sum of GTIs [s]
ontime6	13537.763959467	Sum of GTIs [s]
ontime7	13541.086940169	Sum of GTIs [s]
ontime8	13540.922780156	Sum of GTIs [s]
l2events	162612	Number of level 2 events



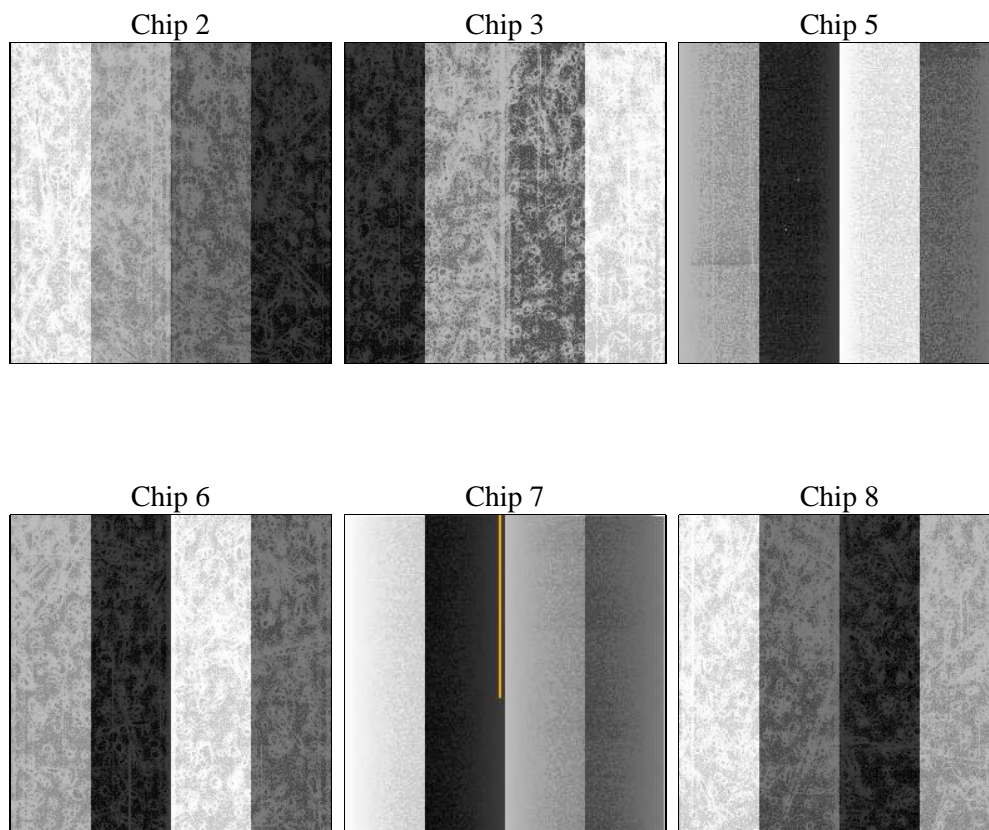
2 OBI

2.1 OBI

2.1.1 Images



2.1.2 Bias



2.1.3 Parameters

obi_num	0	Obi number	sched_exp_time	13500.000000	[s] Scheduled observation exposure time
ascdsver	8.4.3.1	Processing system revision	ontime	13541.086940169	Sum of GTIs [s]
caldsver	4.4.9	 	ontime2	13537.887009859	Sum of GTIs [s]
date	2012-04-10T09:20:03	Date and time of file creation	ontime3	13540.963820159	Sum of GTIs [s]
revision	2	Processing version of data	ontime5	13541.045900166	Sum of GTIs [s]
			ontime6	13537.763959467	Sum of GTIs [s]
			ontime7	13541.086940169	Sum of GTIs [s]
			ontime8	13540.922780156	Sum of GTIs [s]
			l1events	656653	Number of level 1 events

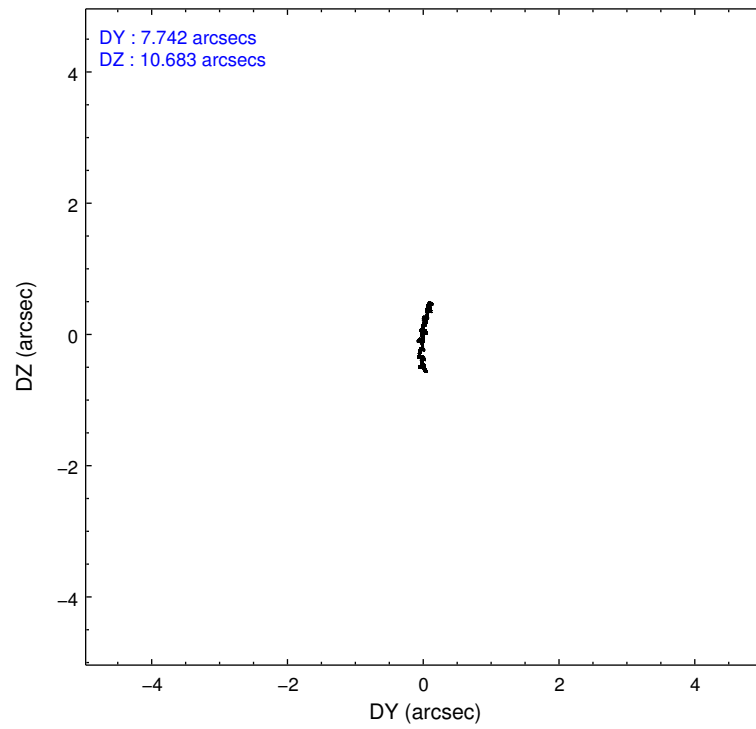
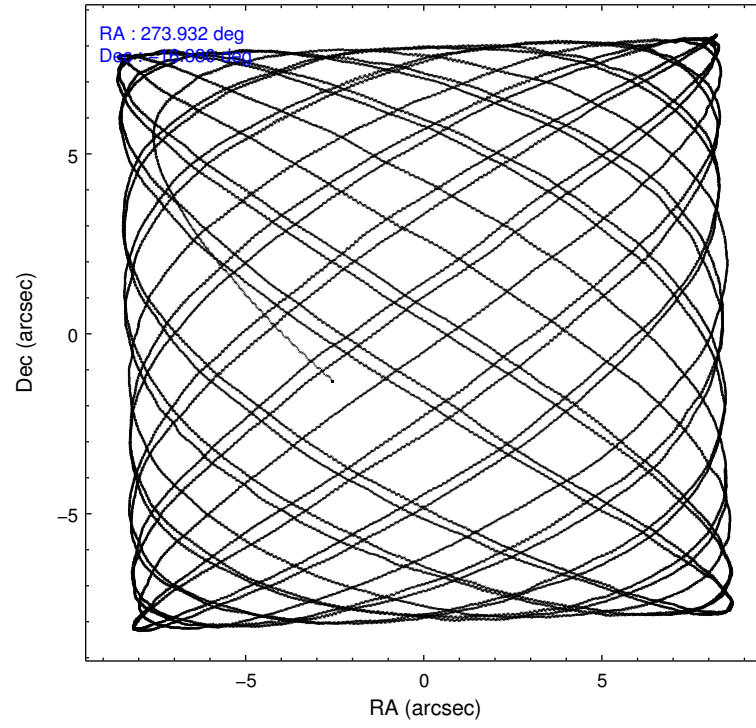
2.1.4 Events

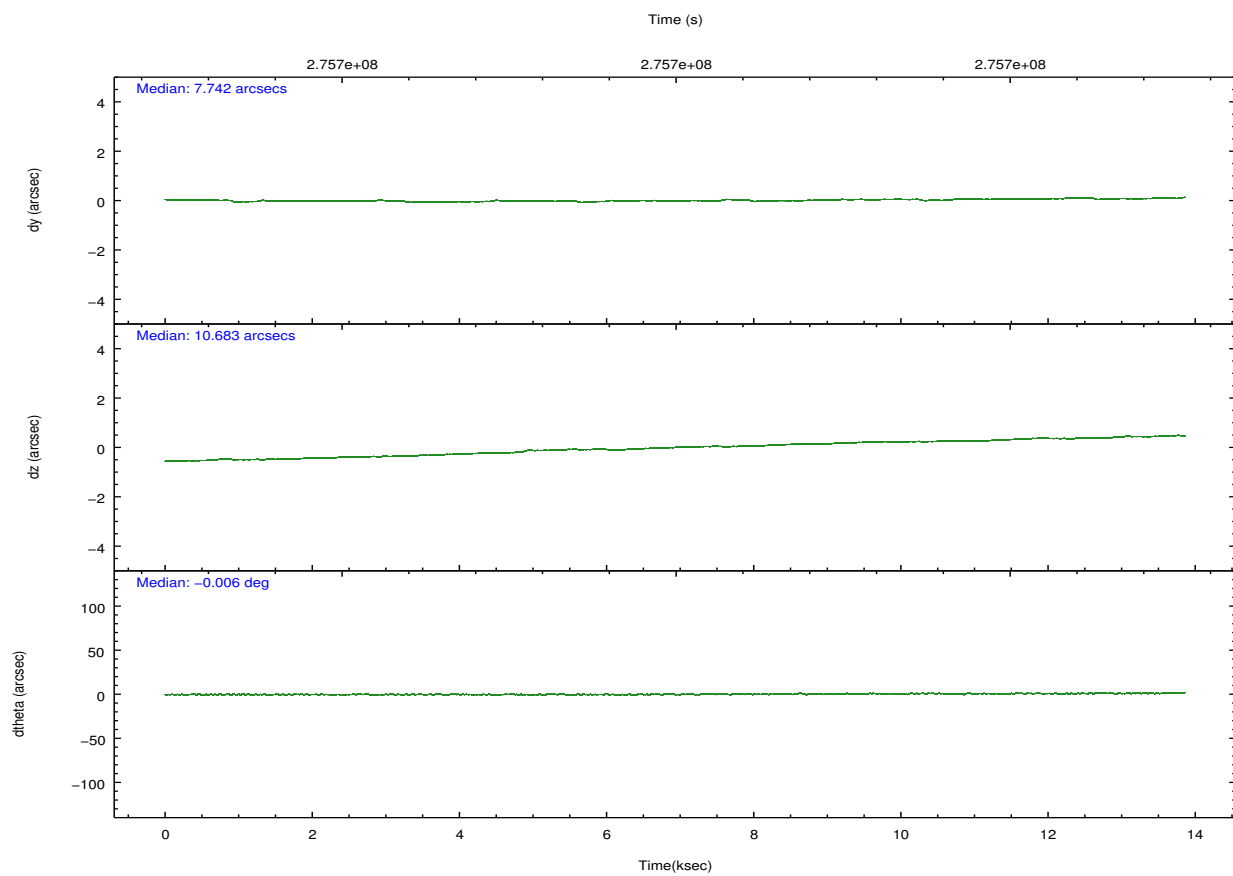
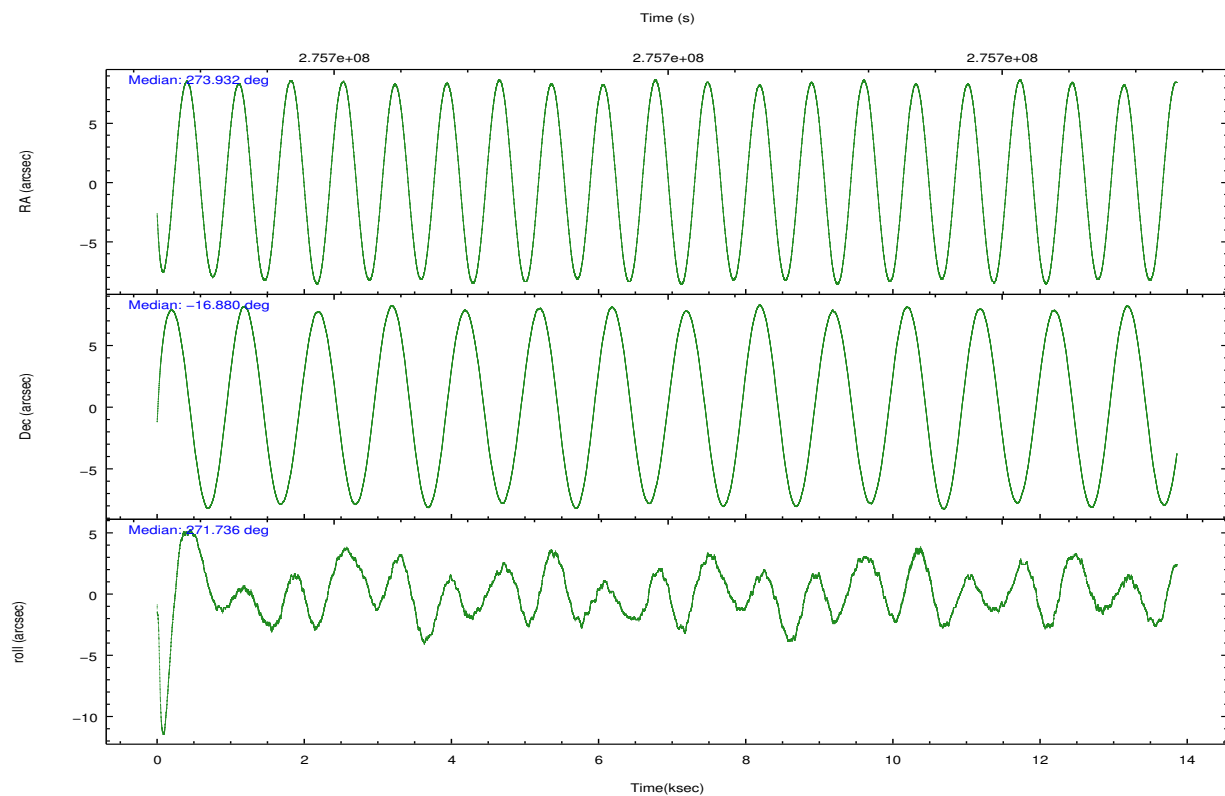
	ccd 2	ccd 3	ccd 5	ccd 6	ccd 7	ccd 8		ccd 2	ccd 3	ccd 5	ccd 6	ccd 7	ccd 8
level 1 events	113488	97736	120521	101115	98710	125083	grade 0 events	7665	6440	7163	7512	6964	12665
rejected events	98904	85228	55671	86732	46263	91554		6%	6%	5%	7%	7%	10%
rejected %	87%	87%	46%	85%	46%	73%	grade 1 events	71	63	316	81	106	112
								0%	0%	0%	0%	0%	0%
							grade 2 events	2815	2168	19729	2490	11533	6815
								2%	2%	16%	2%	11%	5%
							grade 3 events	1175	1113	2879	1206	5117	3204
								1%	1%	2%	1%	5%	2%
							grade 4 events	1183	1085	2794	1148	5077	3041
								1%	1%	2%	1%	5%	2%
							grade 5 events	2505	3174	9170	3085	9852	4827
								2%	3%	7%	3%	9%	3%
							grade 6 events	1755	1706	32326	2037	23780	7831
								1%	1%	26%	2%	24%	6%
							grade 7 events	96319	81987	46144	83556	36281	86588
								84%	83%	38%	82%	36%	69%

2.2 Compared Parameters

Parameter	Planned	Actual	Parameter	Planned	Actual
Instrument	ACIS	ACIS	Obspar format version number	7	7
Detector	ACIS-235678	ACIS-235678	Obspar file type	PREDICTED	ACTUAL
Grating	NONE	NONE	Obspar update status	NONE	UPDATED
Data mode	VFAINT	VFAINT	Number of optional ACIS chips dropped	0	0
Observation mode	POINTING	POINTING	On-chip summing requested	N	N
[deg] Pointing RA	273.917190	273.9324958088419	Subarray requested	NONE	NONE
[deg] Pointing Dec	-16.856628	-16.87960401545949	Alternating exposures requested	N	N
[deg] Pointing Roll	271.582099	271.7431792540614	[s] Primary exposure time	0.000000	3.2
[mm] SIM focus pos	-0.684267	-0.6828225247311905			
[mm] SIM defocus	0	0.001444936568705701			
[mm] SIM translation stage pos	-190.132523	-190.145094680475			
[mm] SIM translation stage offset	0	0.01257209746719923			
[s] Observation start time (MET)	275693416.184000	275692320.75043			
Observation start date	2006-09-26T21:29:11	2006-09-26T21:12:00			
[s] Observation end time (MET)	275706916.184000	275707302.15113			
Observation end date	2006-09-27T01:14:11	2006-09-27T01:21:42			
Read mode	TIMED	TIMED			

2.3 Aspect



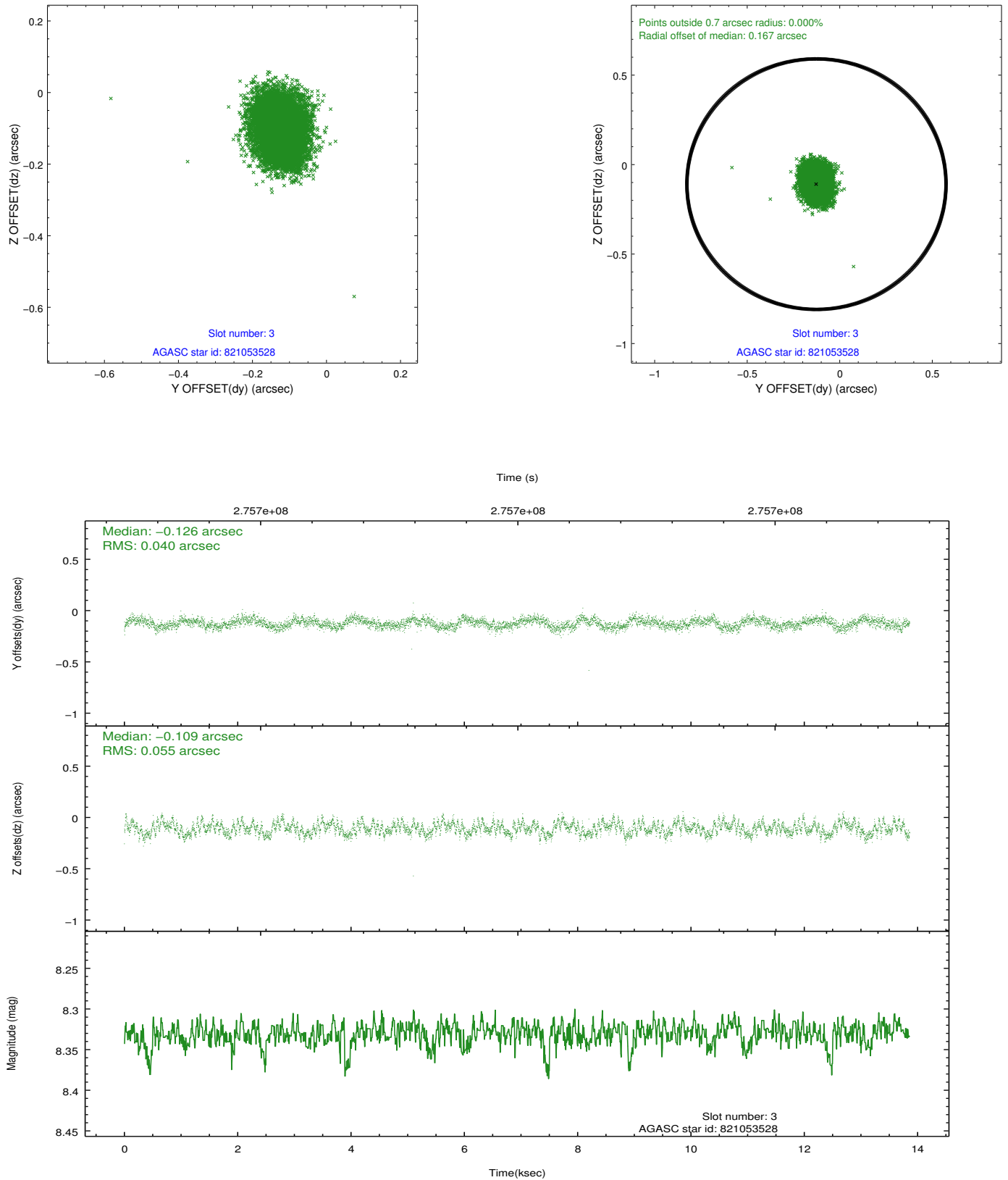


Slot Statistics

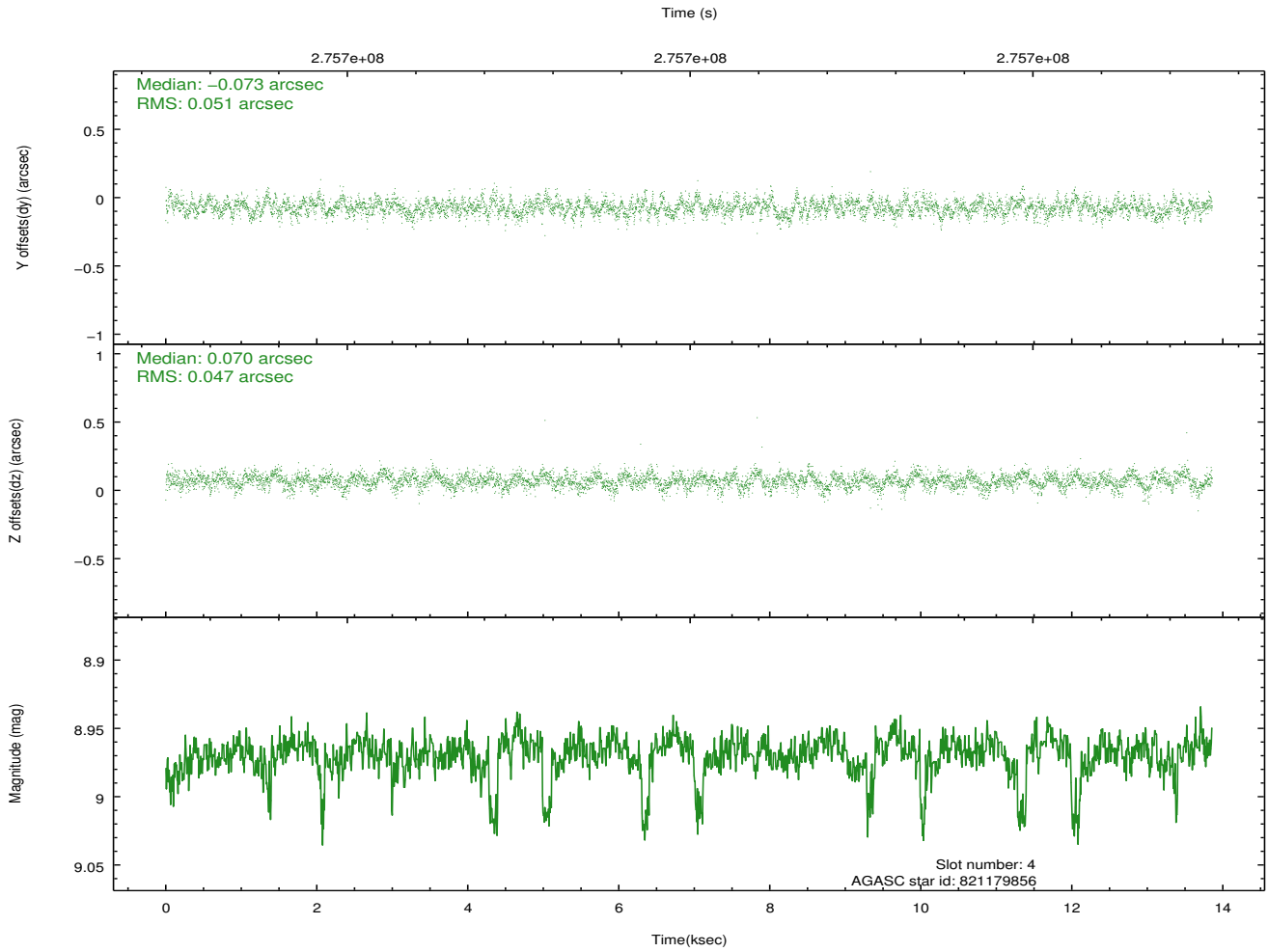
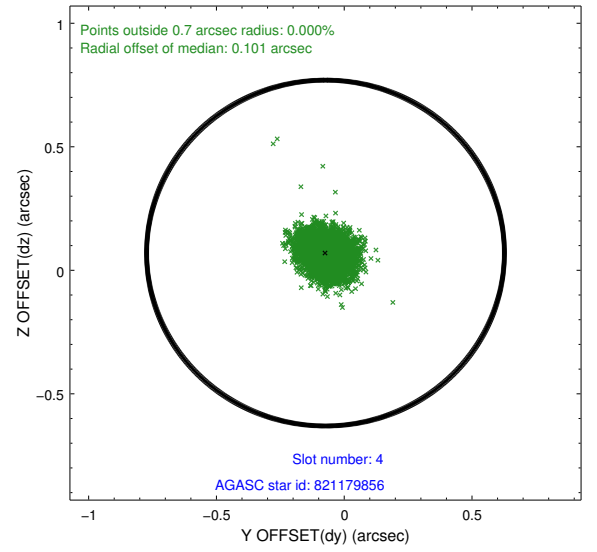
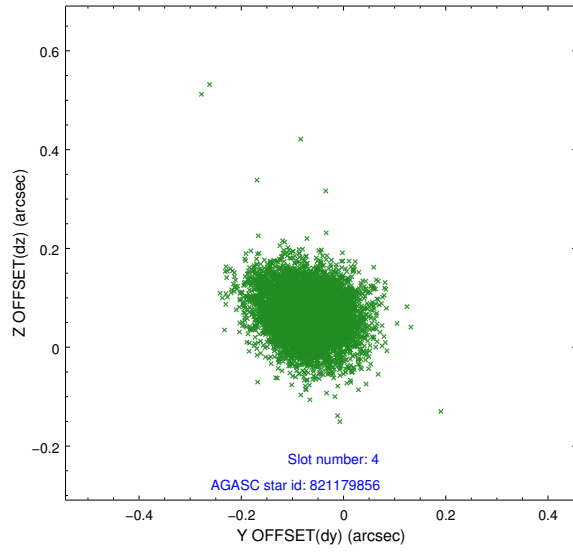
slot	status	id	mag	n_pts	med_dy	med_dz	dr1	dr2	ra	dec	mean_y	mean_z
0	FID	ACIS-S-1	7.19	3380	0.020	-0.075	0.019	0.028	0.000000	0.000000	935.54	-1727.51
1	FID	ACIS-S-4	7.21	3380	0.106	0.048	0.012	0.019	0.000000	0.000000	2153.20	176.43
2	FID	ACIS-S-5	7.23	3381	-0.153	0.040	0.009	0.015	0.000000	0.000000	-1813.09	170.36
3	GUIDE	821053528	8.33	6757	-0.126	-0.109	0.073	0.114	273.625019	-16.498449	-1315.73	-972.71
4	GUIDE	821179856	8.97	6758	-0.073	0.070	0.073	0.121	274.218736	-16.395636	-1629.57	1086.81
5	GUIDE	821183504	8.36	6761	0.019	0.036	0.068	0.111	274.206900	-16.517860	-1190.88	1033.48
6	GUIDE	821707704	8.91	6757	-0.027	0.004	0.143	0.208	274.330077	-16.988328	514.56	1408.30
7	GUIDE	821035568	7.92	6754	0.194	0.006	0.084	0.127	273.834124	-16.831485	-97.77	-283.19

2.4 Star Slots

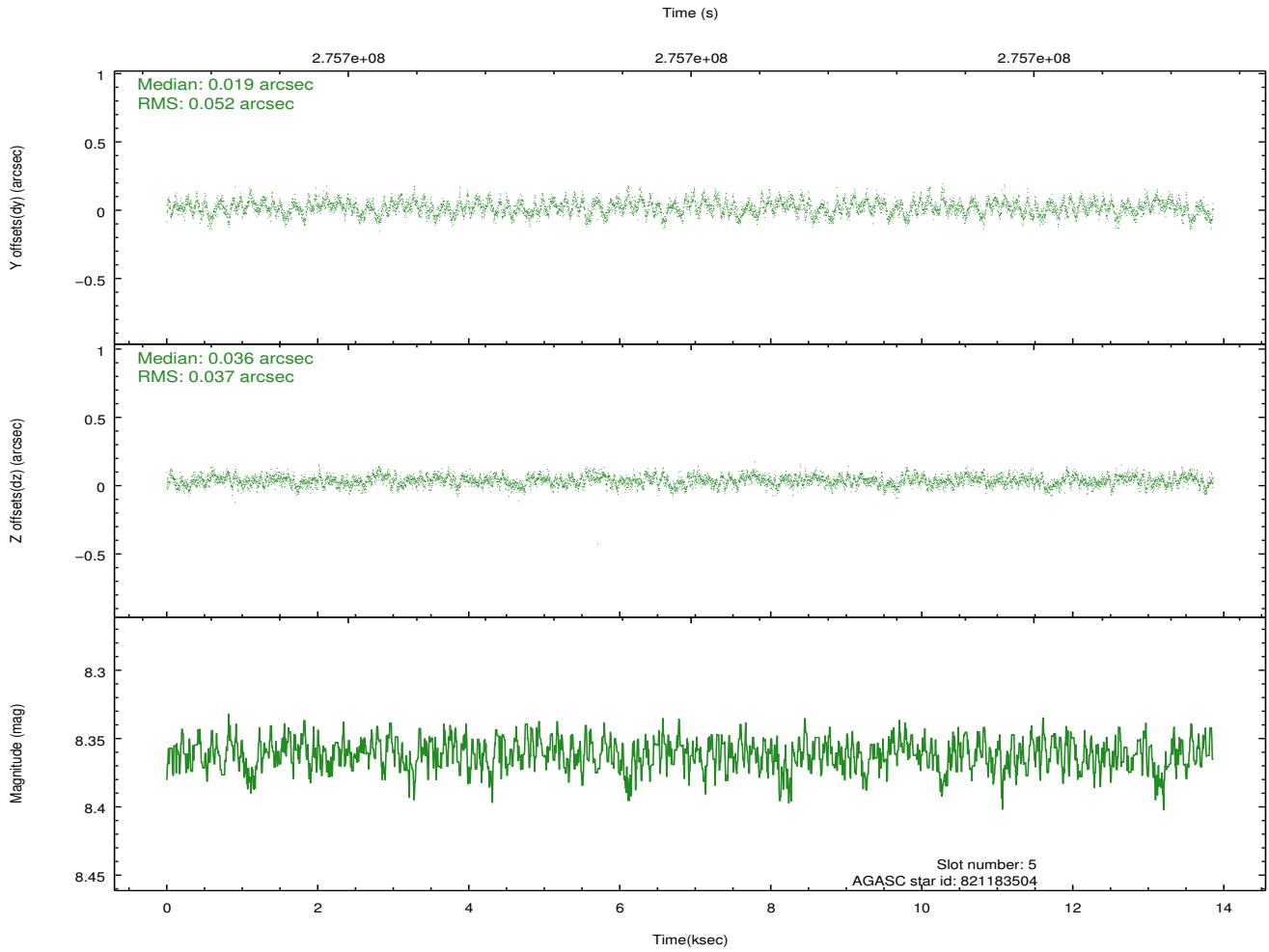
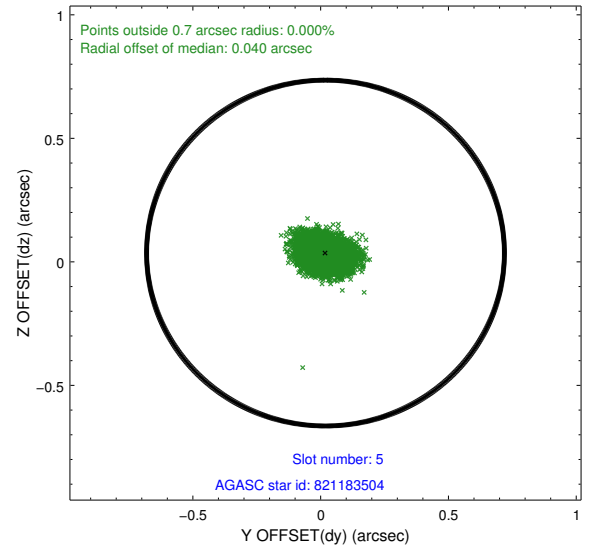
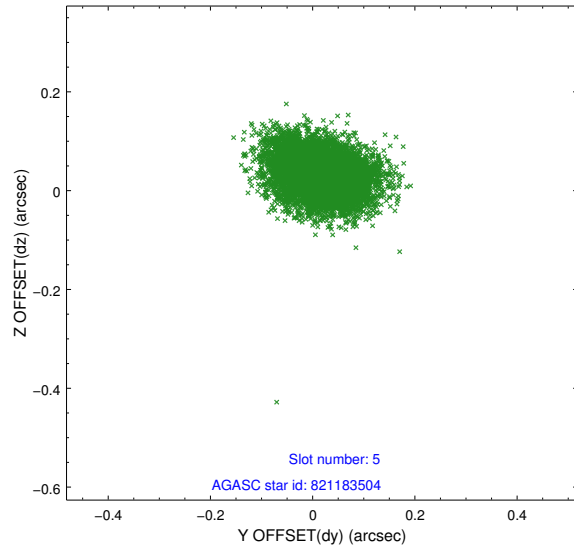
2.4.1 Slot 3



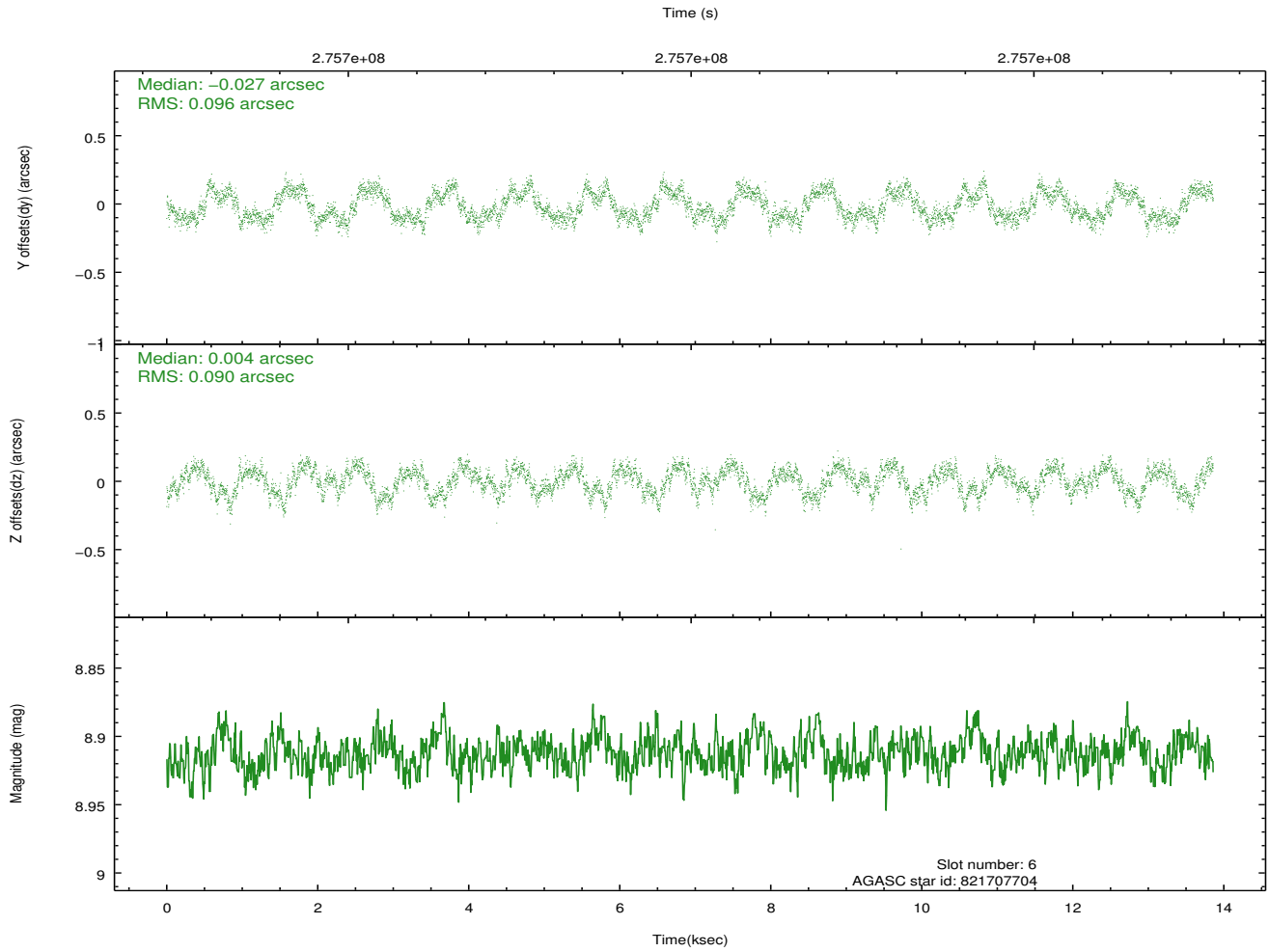
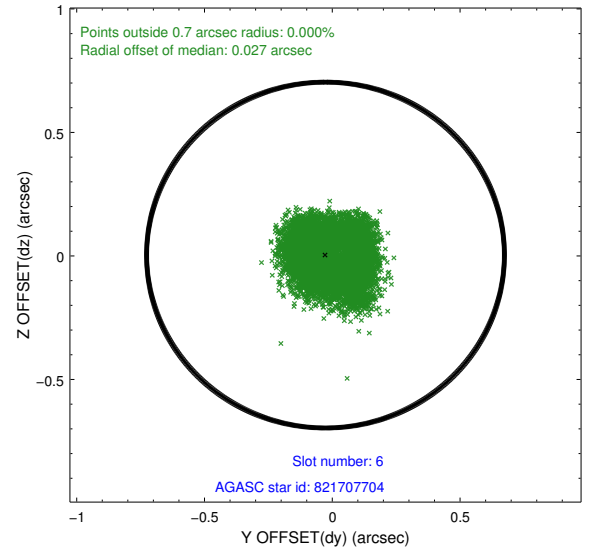
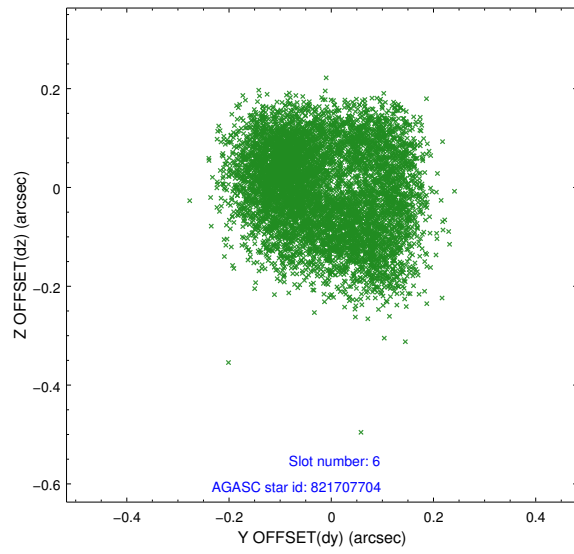
2.4.2 Slot 4



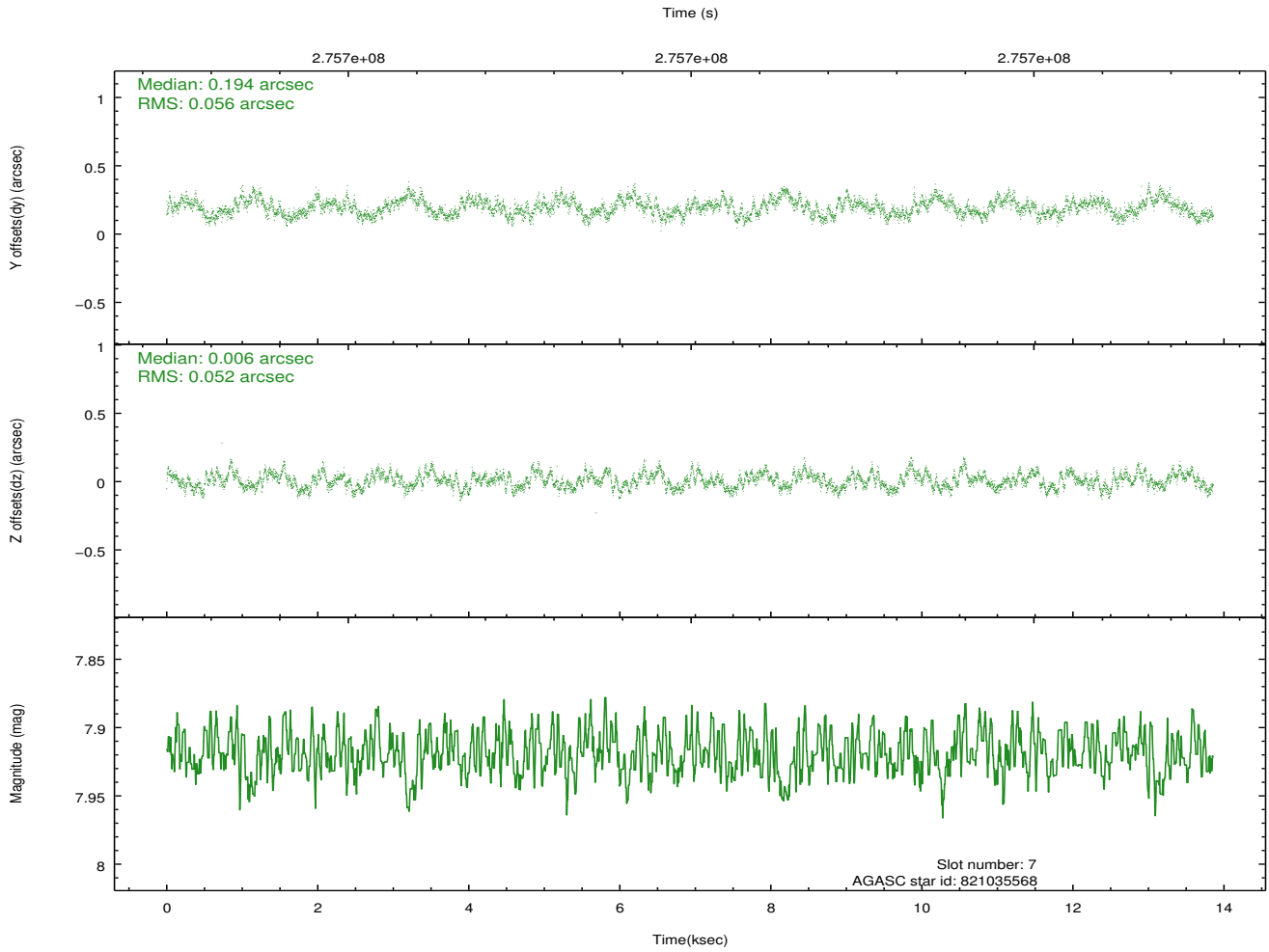
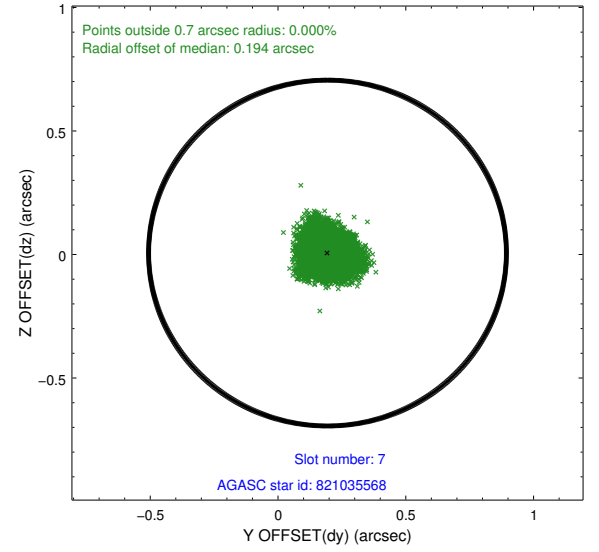
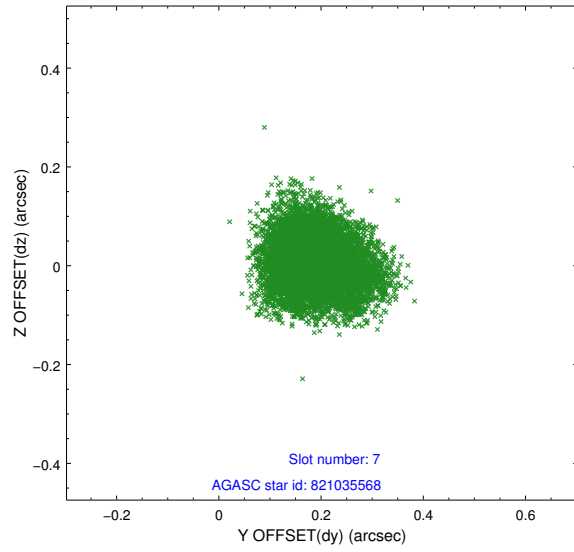
2.4.3 Slot 5



2.4.4 Slot 6

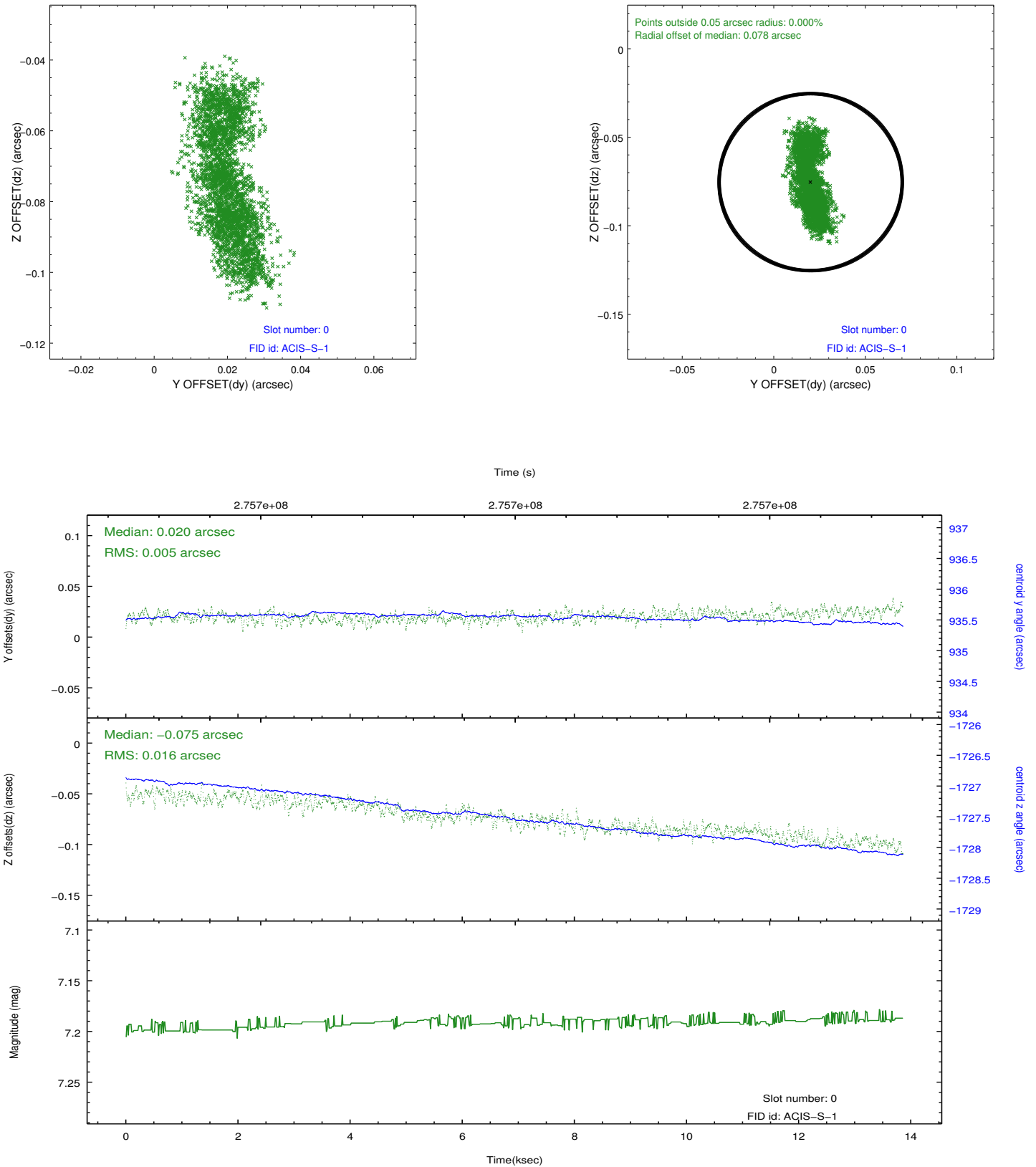


2.4.5 Slot 7

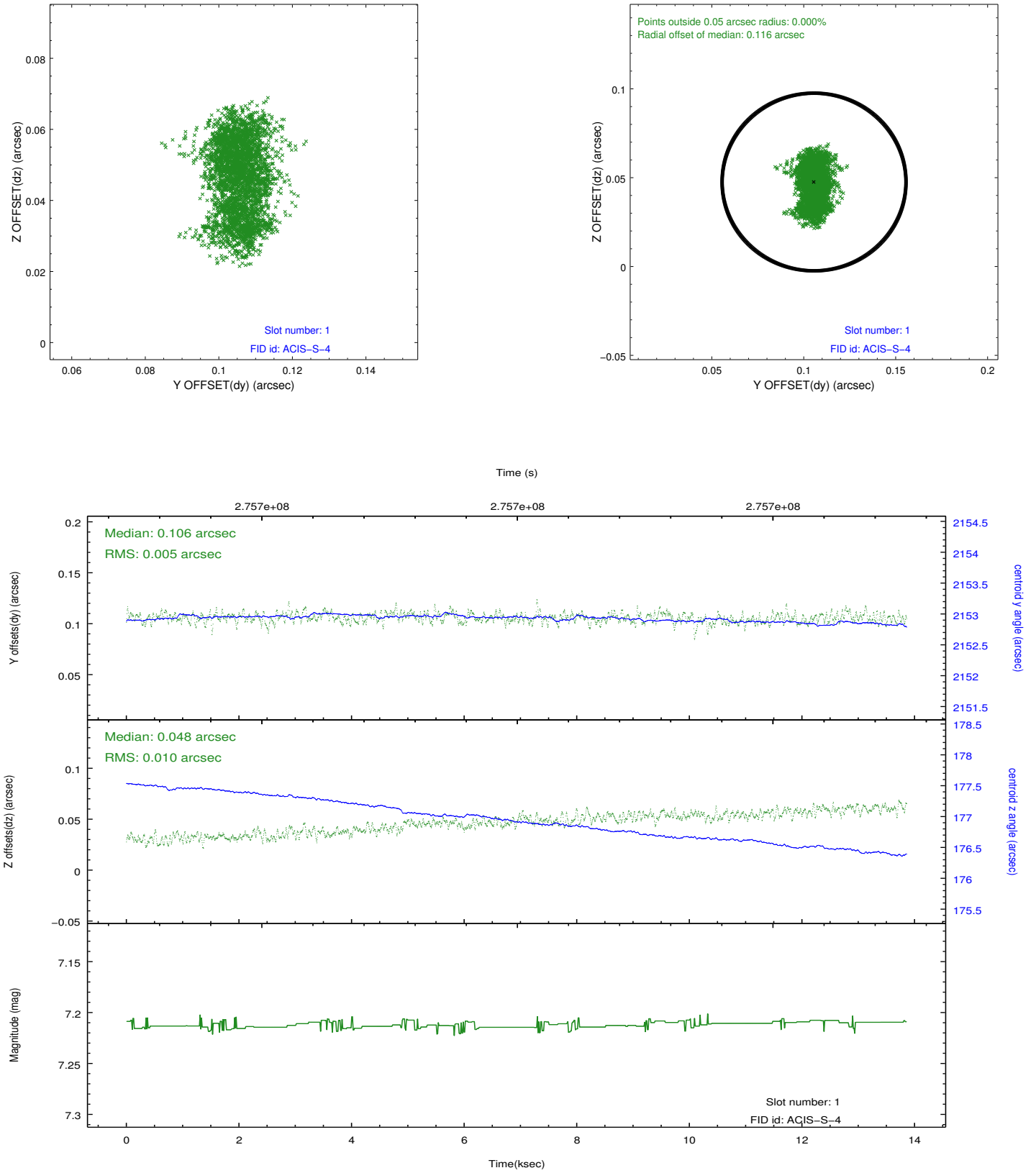


2.5 FID Slots

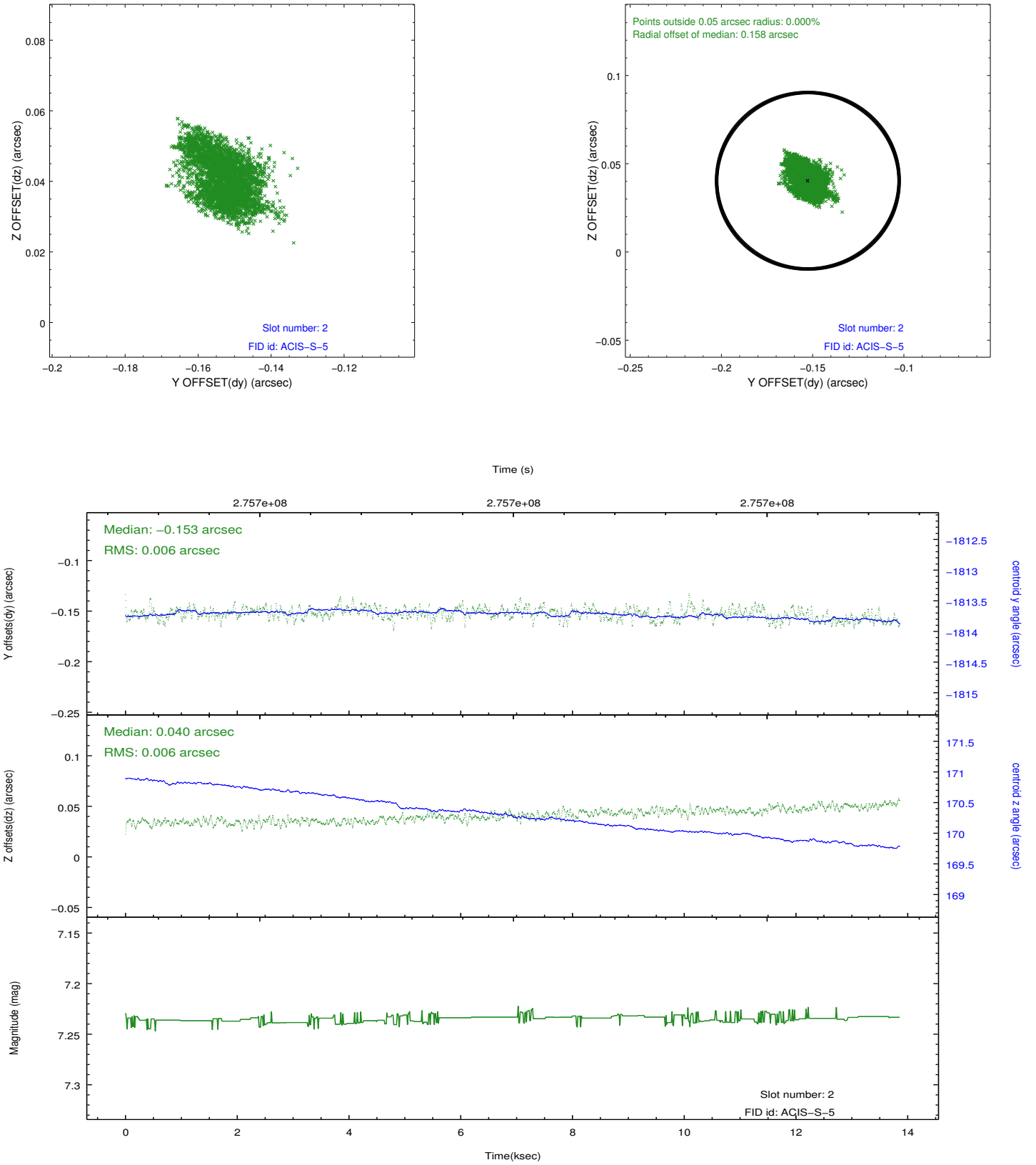
2.5.1 Slot 0



2.5.2 Slot 1



2.5.3 Slot 2



A Summary

A.1 Status

V&V Scientist	Beth Sundheim
V&V Date (YYYY-MM-DD)	2012.04.10
V&V Edition	1
V&V Disposition and Status	OK
V&V Charge Time	13.5423999

A.2 Comments