

# V&V Reference Report

## L2 ASCDS Version : 8.4.3

Observation 6598 - L2 Version 4  
Chandra X-Ray Center

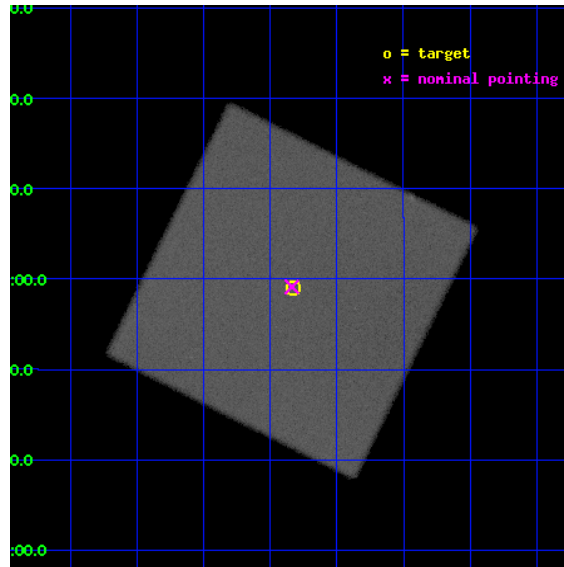
L2 Processing Date : Aug 10 2012

## Contents

<b>1</b>	<b>Front</b>	<b>2</b>
<b>2</b>	<b>OBI</b>	<b>3</b>
2.1	OBI . . . . .	3
2.1.1	Images . . . . .	3
2.1.2	Parameters . . . . .	4
2.1.3	Events . . . . .	4
2.2	Compared Parameters . . . . .	5
2.3	Aspect . . . . .	6
2.4	Star Slots . . . . .	9
2.4.1	Slot 3 . . . . .	9
2.4.2	Slot 4 . . . . .	10
2.4.3	Slot 5 . . . . .	11
2.4.4	Slot 6 . . . . .	12
2.4.5	Slot 7 . . . . .	13
2.5	FID Slots . . . . .	14
2.5.1	Slot 0 . . . . .	14
2.5.2	Slot 1 . . . . .	15
2.5.3	Slot 2 . . . . .	16
<b>A</b>	<b>Summary</b>	<b>17</b>
A.1	Status . . . . .	17
A.2	Comments . . . . .	17

# 1 Front

seq_num	400503	Sequence number
obs_id	6598	Observation id
title	Rapid variability of the arcsec scale X-ray jets of SS 433	Proposa
observer	Dr Simone Migliari	Principal investigator
object	SS 433	Source name
ra_targ	287.956667	Observer's specified target RA [deg]
dec_targ	4.982667	Observer's specified target Dec [deg]
ra_nom	287.95939153746	Nominal RA [deg]
dec_nom	4.9858305984433	Nominal Dec [deg]
roll_nom	71.418791317195	Nominal Roll [deg]
revision	4	Processing version of data
ontime	15181.275705487	[s]
livetime	14878.334007317	Ontime multiplied by DTCOR
l2events	1029747	Number of level 2 events

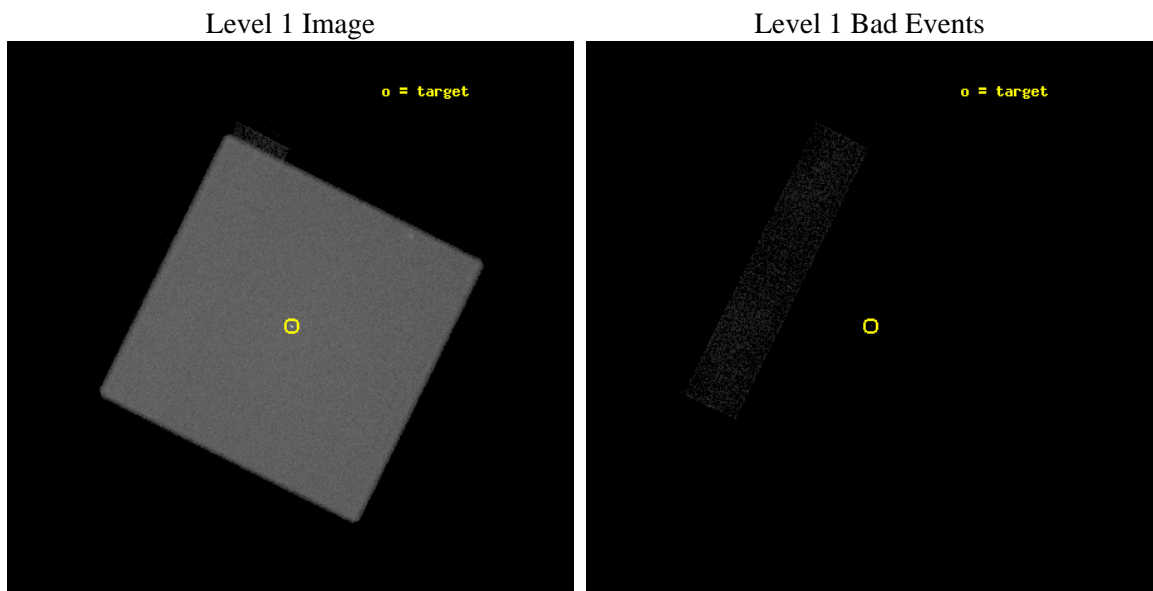




## 2 OBI

### 2.1 OBI

#### 2.1.1 Images



### 2.1.2 Parameters

obi_num	0	Obi number	sched_exp_time	15000.000000	[s] Scheduled observation exposure time
ascdsver	8.4.5	Processing system revision	ontime	15181.275705487	[s]
caldbver	4.5.1.1	&#160	l1events	1543820	Number of level 1 events
date	2012-08-11T00:42:39	Date and time of file creation			
revision	4	Processing version of data			

### 2.1.3 Events

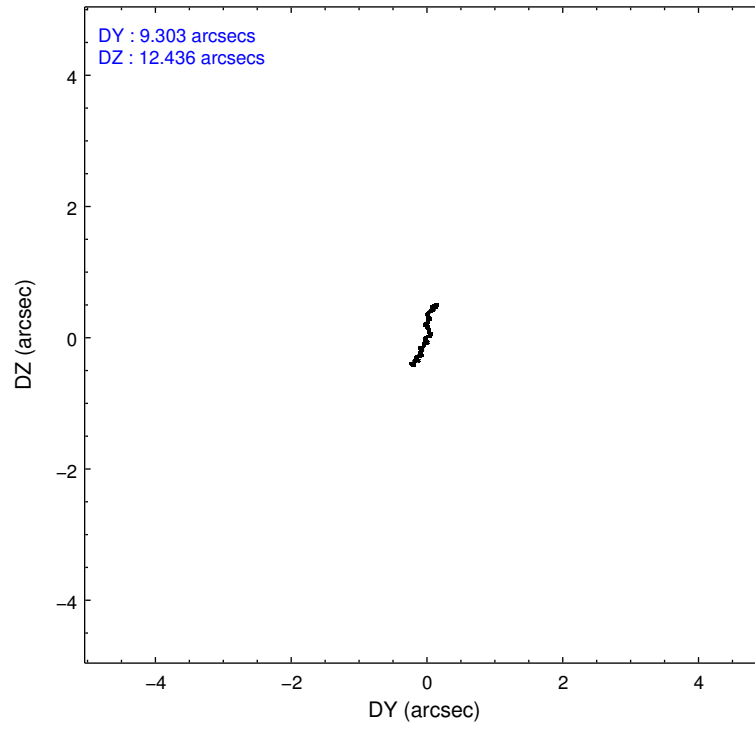
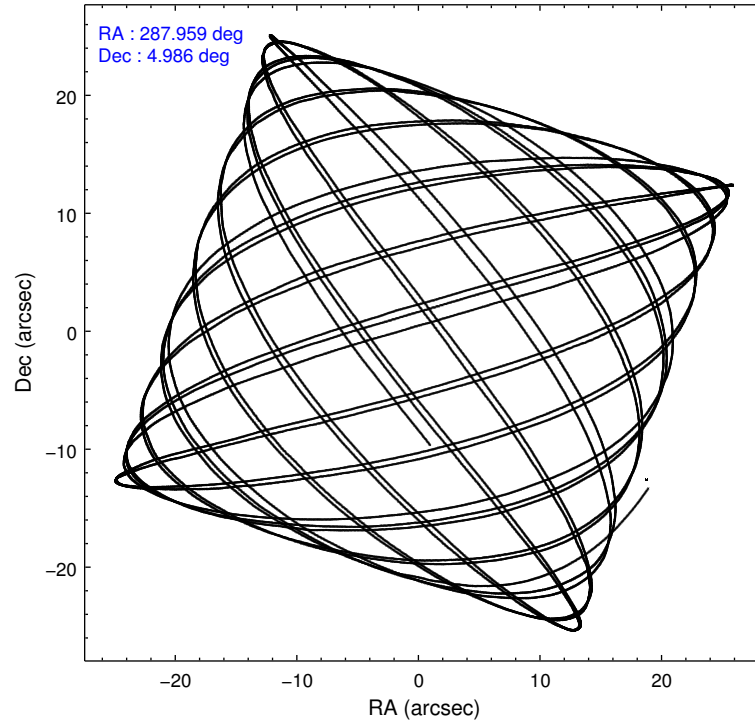
#### Level 1 Events

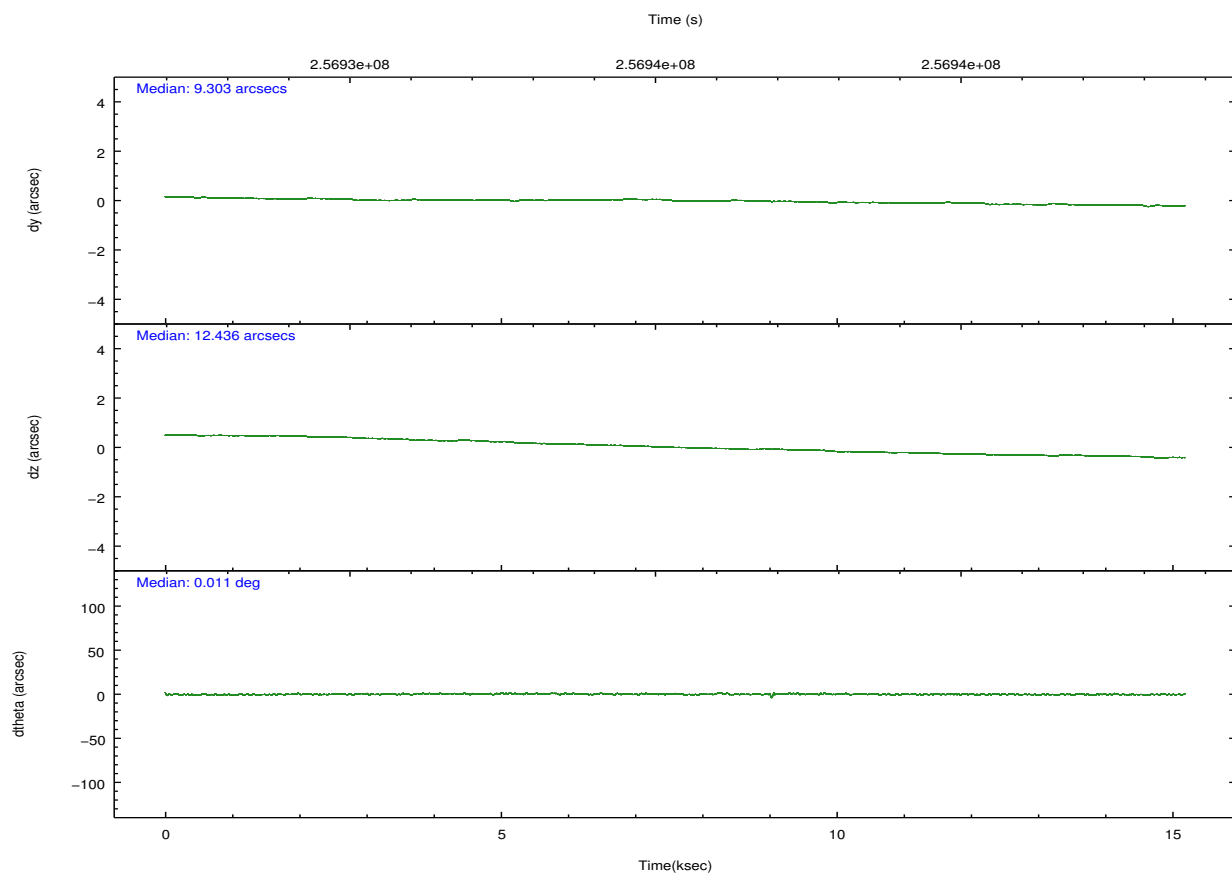
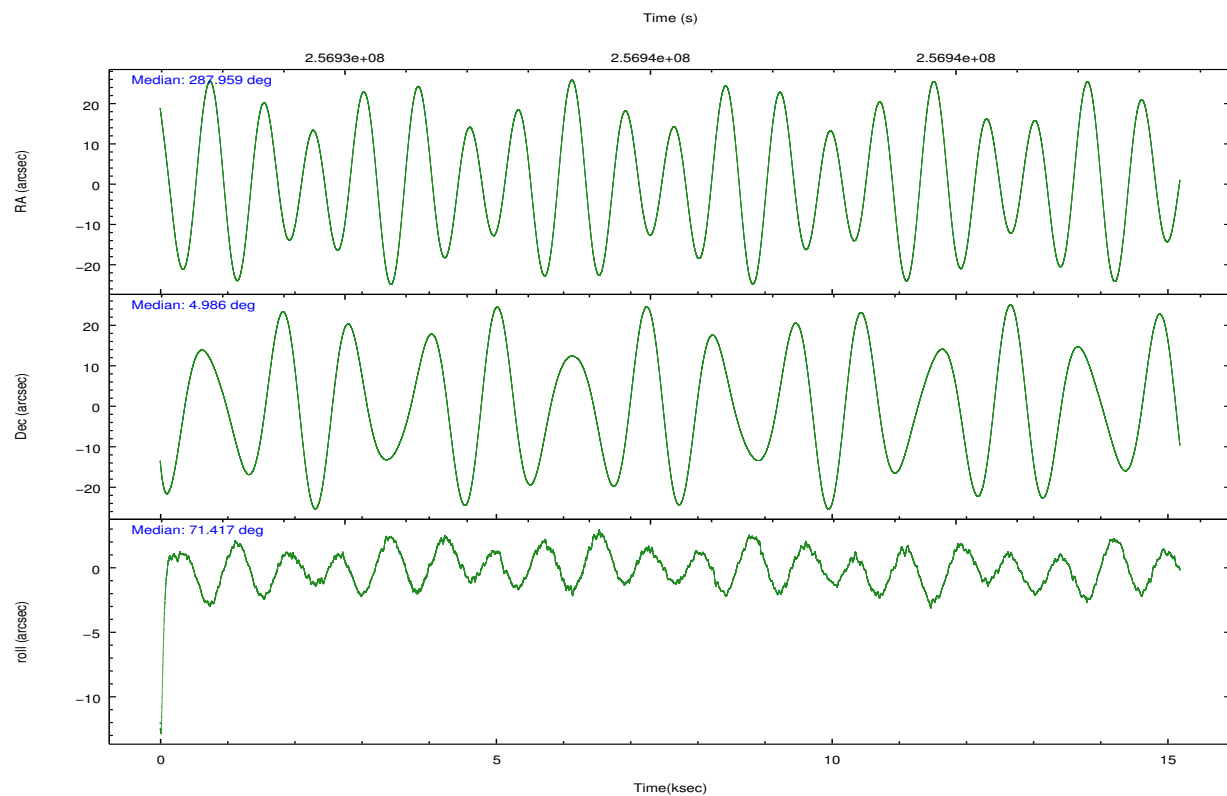
	<b>segment 0</b>
level 1 events	1543820
rejected events	93661
rejected %	6%

## 2.2 Compared Parameters

Parameter	Planned	Actual	Parameter	Planned	Actual
Instrument	HRC	HRC	Obspar format version number	7	7
Detector	HRC-I	HRC-I	Obspar file type	PREDICTED	ACTUAL
Grating	NONE	NONE	Obspar update status	NONE	UPDATED
Data mode	OBSERVING	OBSERVING			
Observation mode	POINTING	POINTING			
[deg] Pointing RA	287.965432	287.959391537457			
[deg] Pointing Dec	4.959366	4.985830598443258			
[deg] Pointing Roll	71.513767	71.41879131719534			
[mm] SIM focus pos	-1.040293	-1.038866356238299			
[mm] SIM defocus	0	0.001426264420575141			
[mm] SIM translation stage pos	126.985494	126.9829799899862			
[mm] SIM translation stage offset	0	0.002508901615314585			
[s] Observation start time (MET)	256927907.184000	256927195.41062			
Observation start date	2006-02-21T16:50:42	2006-02-21T16:39:55			
[s] Observation end time (MET)	256942907.184000	256943378.11137			
Observation end date	2006-02-21T21:00:42	2006-02-21T21:09:38			

## 2.3 Aspect



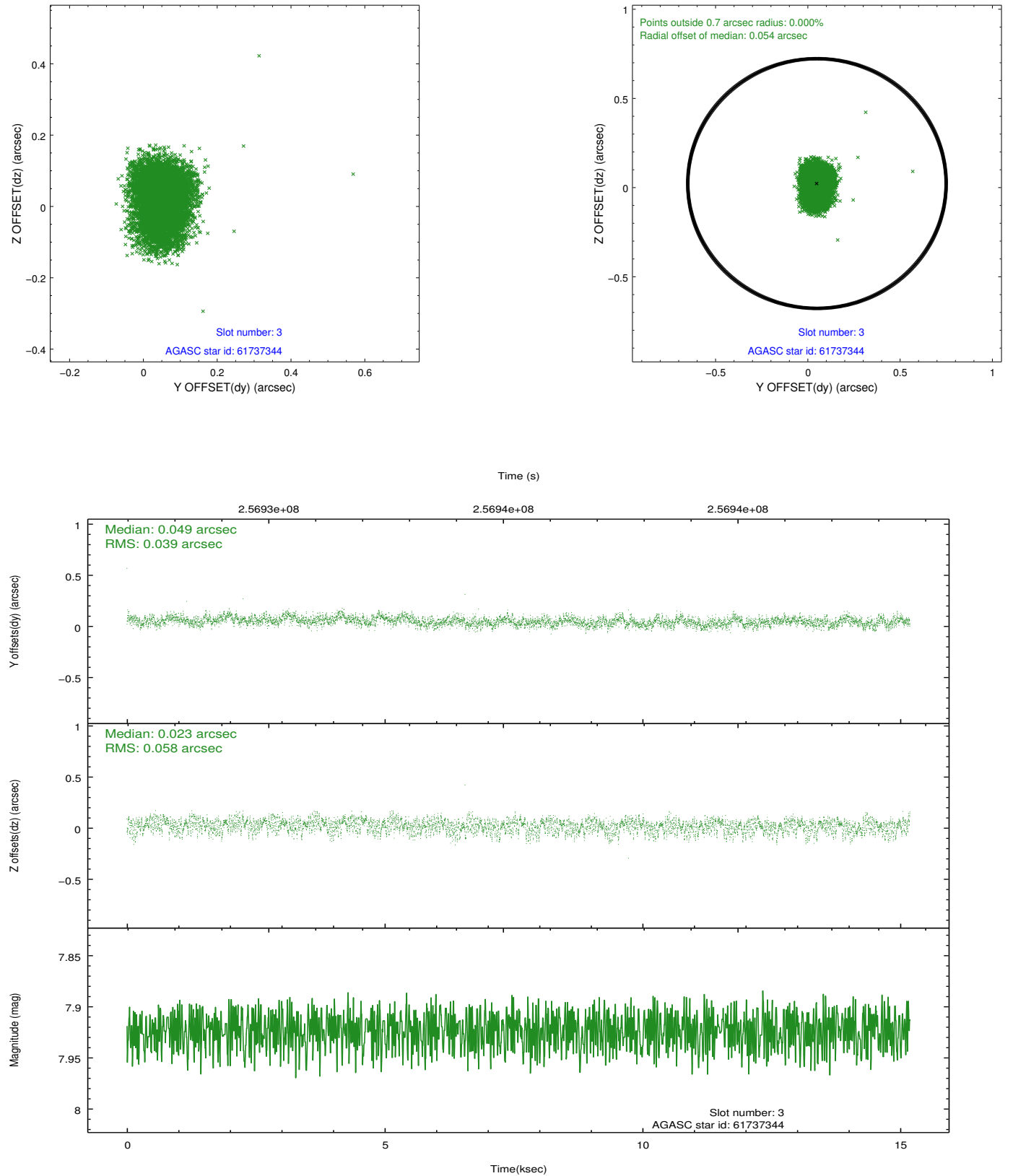


### Slot Statistics

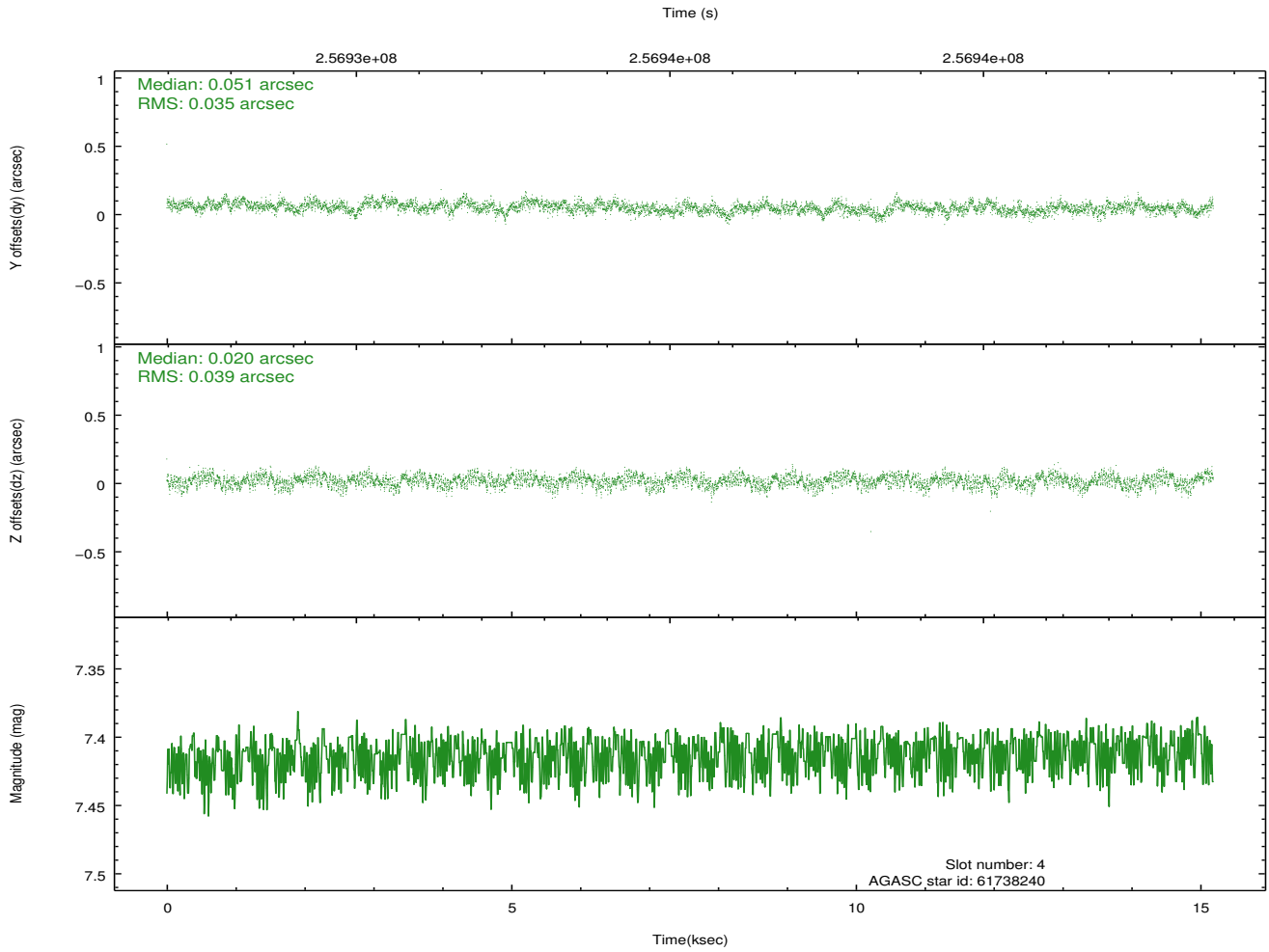
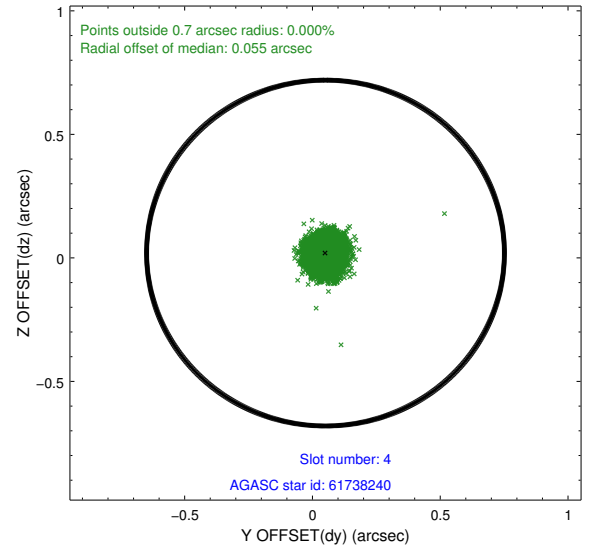
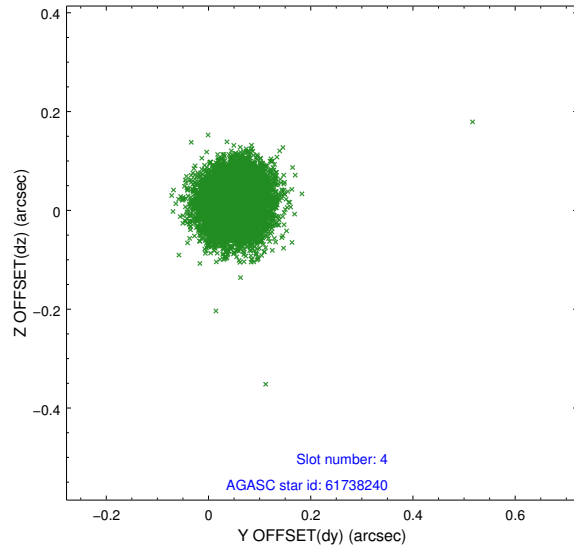
slot	status	id	mag	n_pts	med_dy	med_dz	dr1	dr2	ra	dec	mean_y	mean_z
0	FID	HRC-I-1	7.01	3703	0.051	-0.018	0.022	0.033	0.000000	0.000000	-764.92	-1300.46
1	FID	HRC-I-3	7.11	3704	-0.063	-0.028	0.012	0.020	0.000000	0.000000	-1193.64	1003.75
2	FID	HRC-I-4	7.05	3704	0.128	-0.046	0.016	0.023	0.000000	0.000000	1277.71	1001.87
3	GUIDE	61737344	7.92	7409	0.049	0.023	0.074	0.122	288.389606	4.264010	-1890.52	-2237.93
4	GUIDE	61738240	7.41	7408	0.051	0.020	0.056	0.090	287.996556	4.354861	-2028.36	-796.40
5	GUIDE	61743800	7.47	7329	-0.043	-0.210	0.067	0.109	287.776811	5.274666	862.01	1001.02
6	GUIDE	61744976	7.61	7409	-0.197	0.063	0.053	0.087	288.430364	5.306675	1715.11	-1183.75
7	GUIDE	61745024	7.61	7403	0.134	0.108	0.064	0.100	288.156168	5.297362	1371.59	-262.63

## 2.4 Star Slots

### 2.4.1 Slot 3

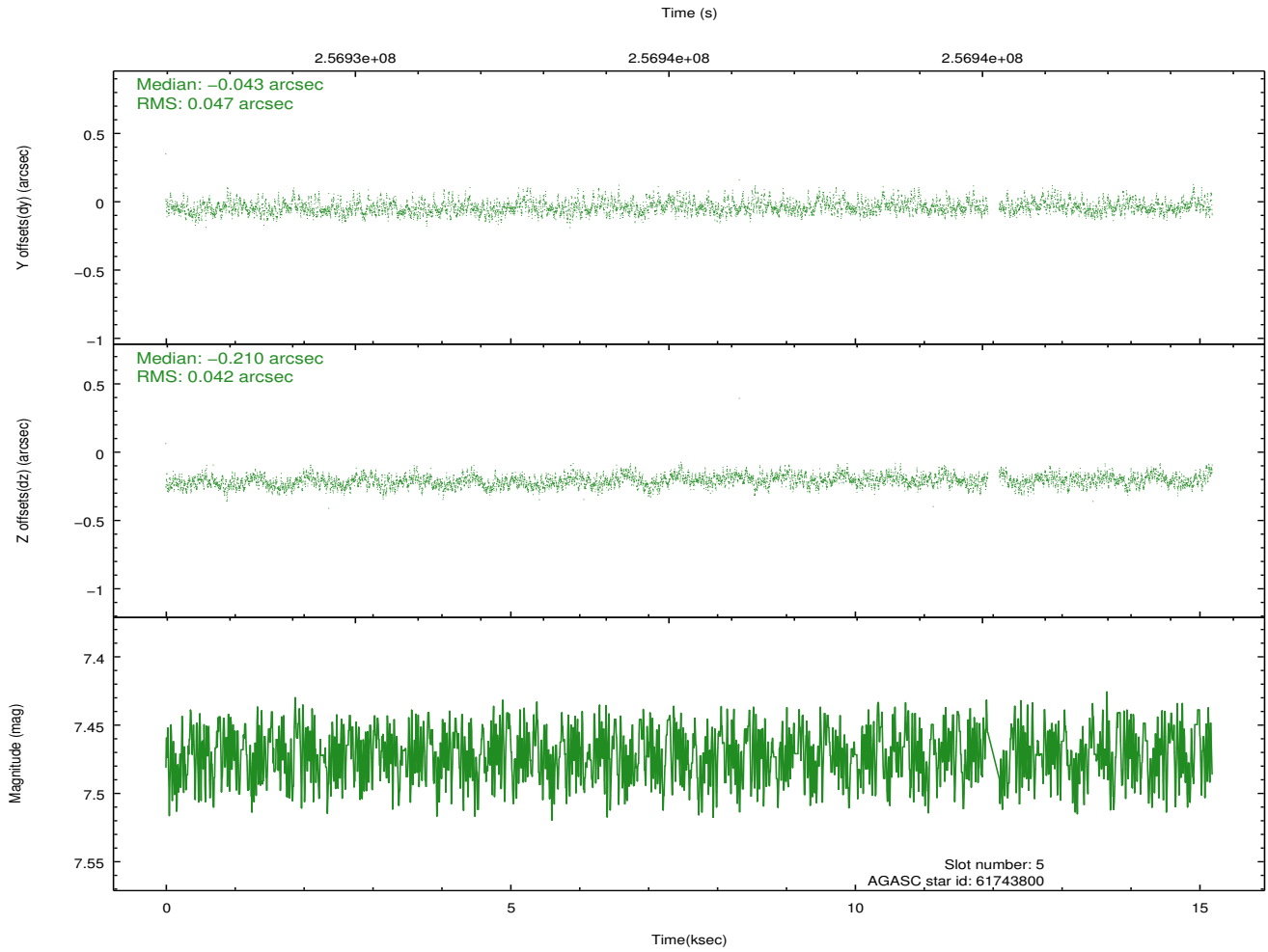
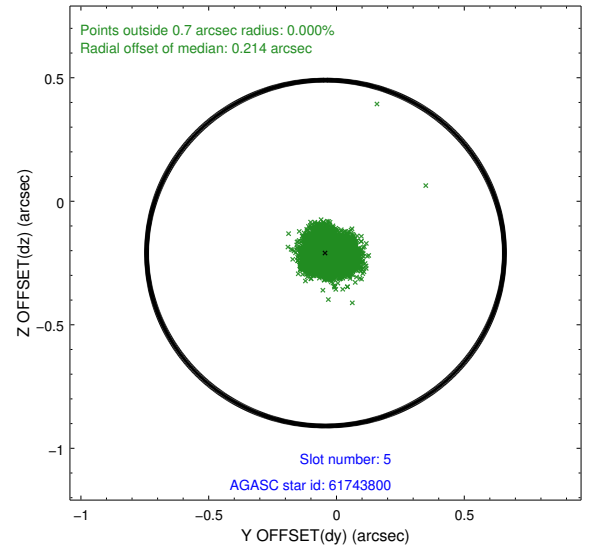
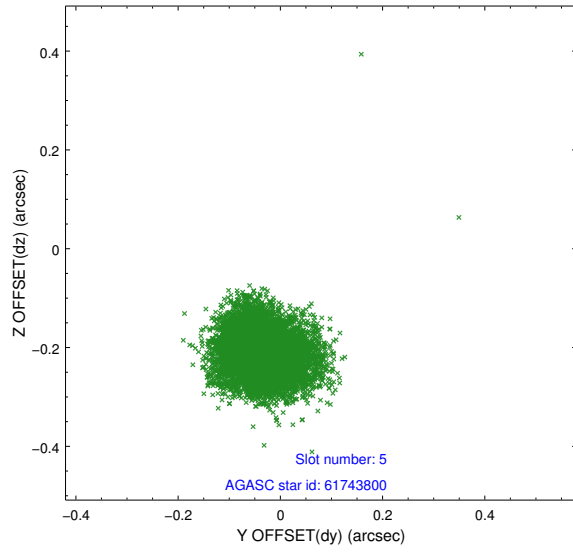


## 2.4.2 Slot 4

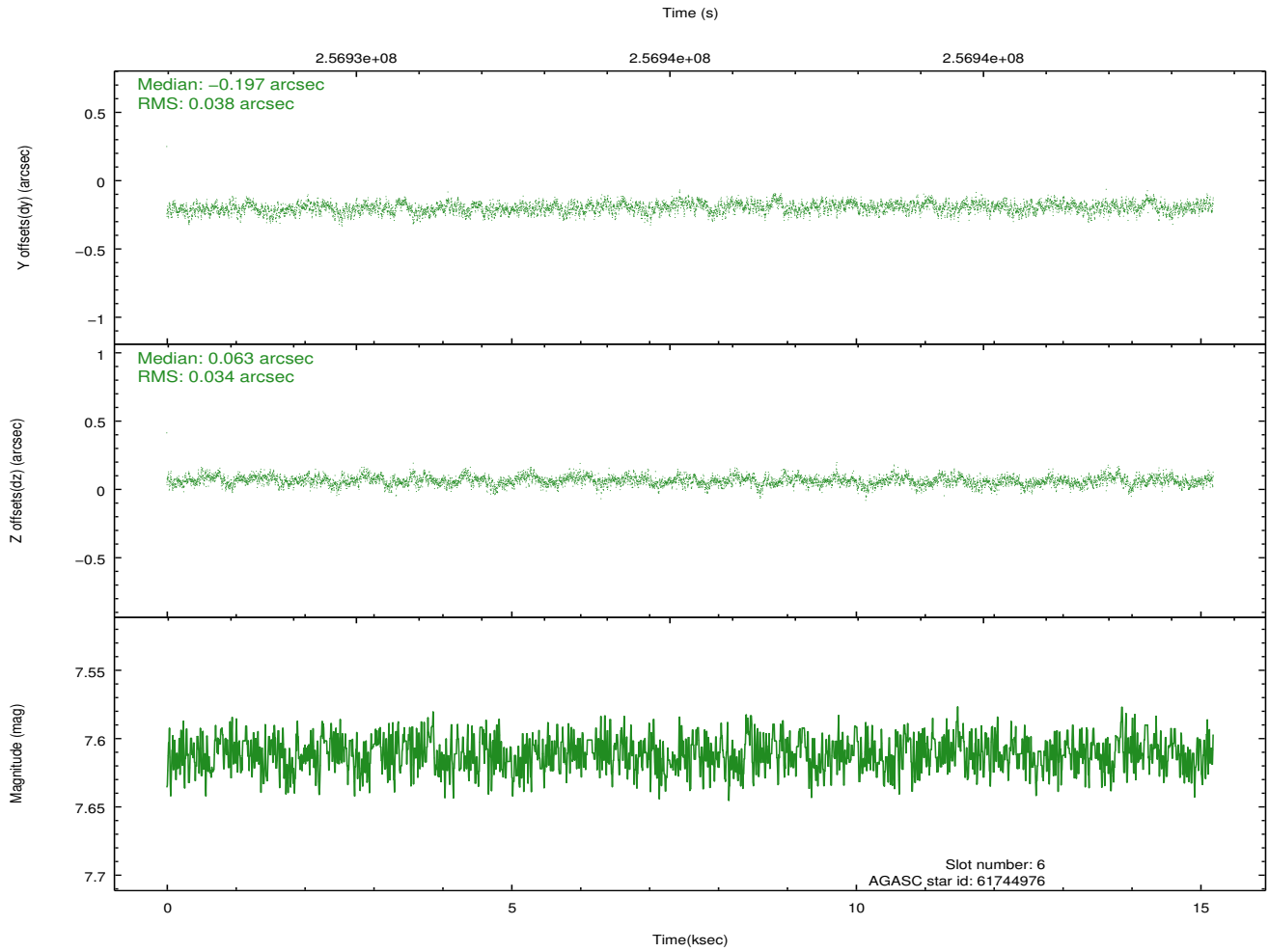
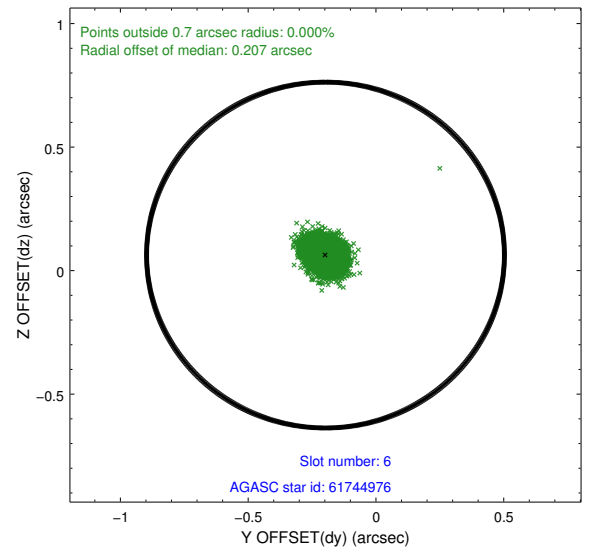
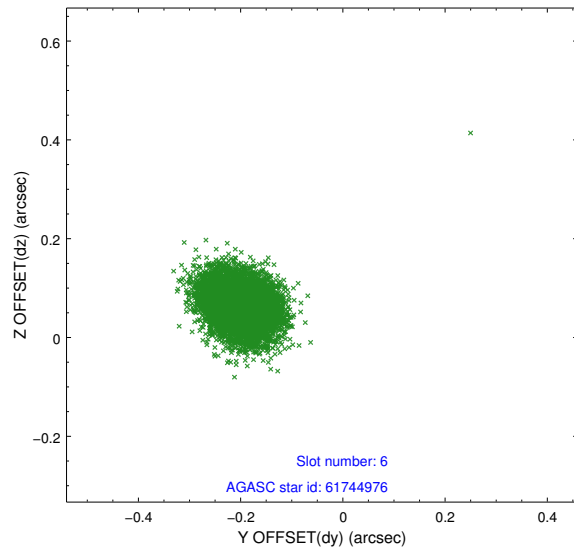




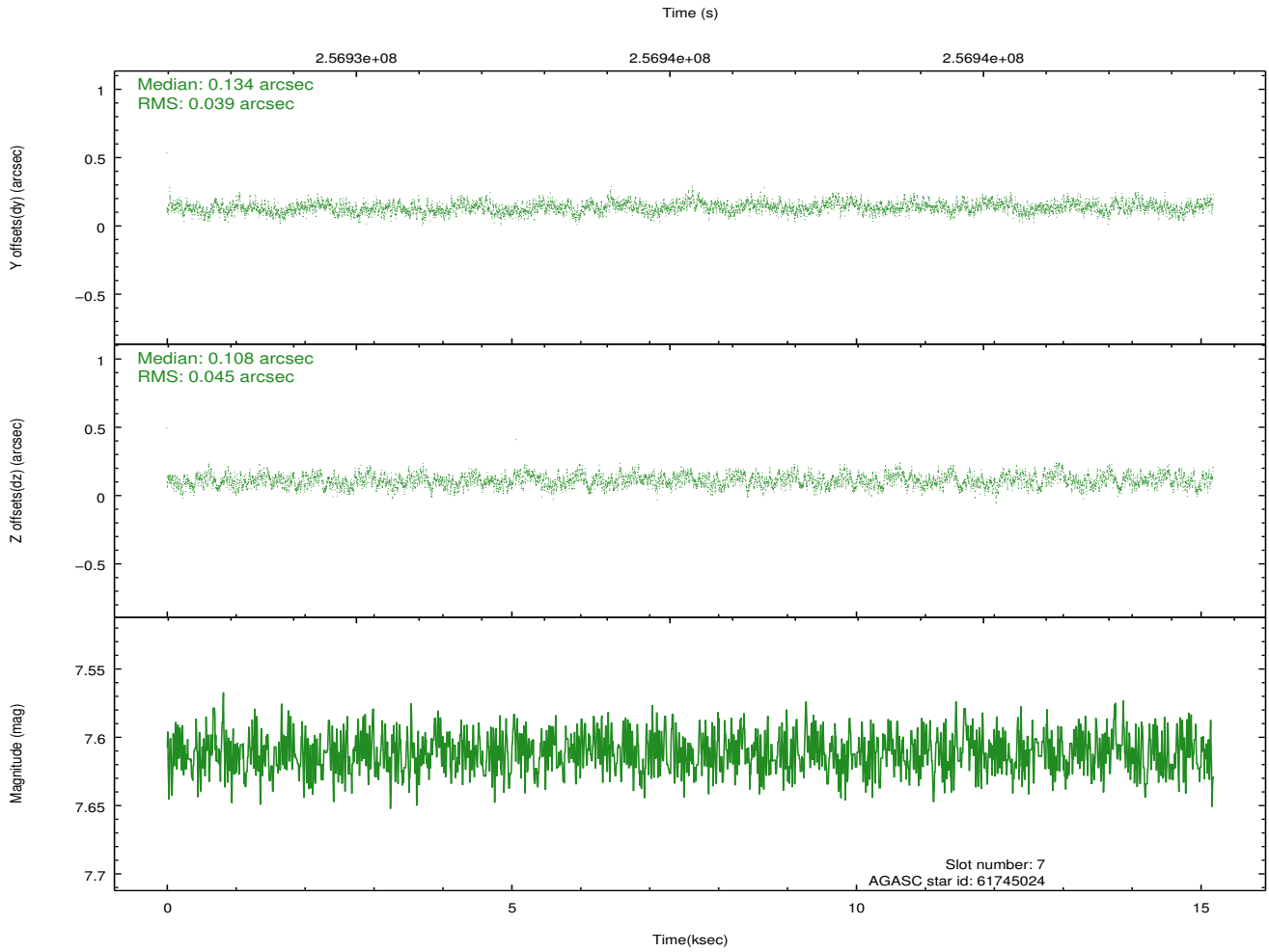
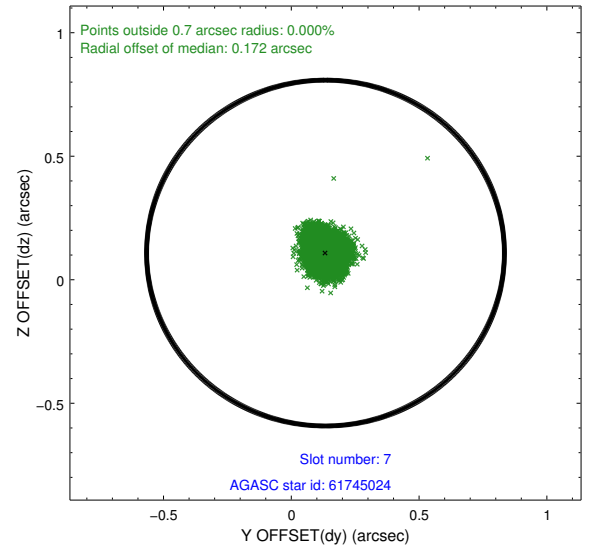
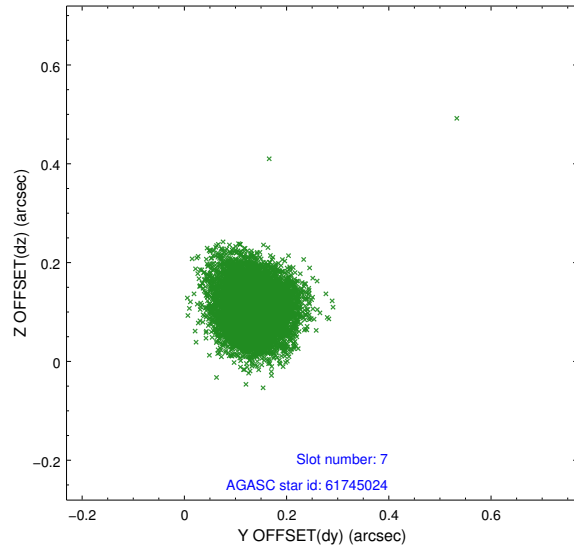
### 2.4.3 Slot 5



## 2.4.4 Slot 6

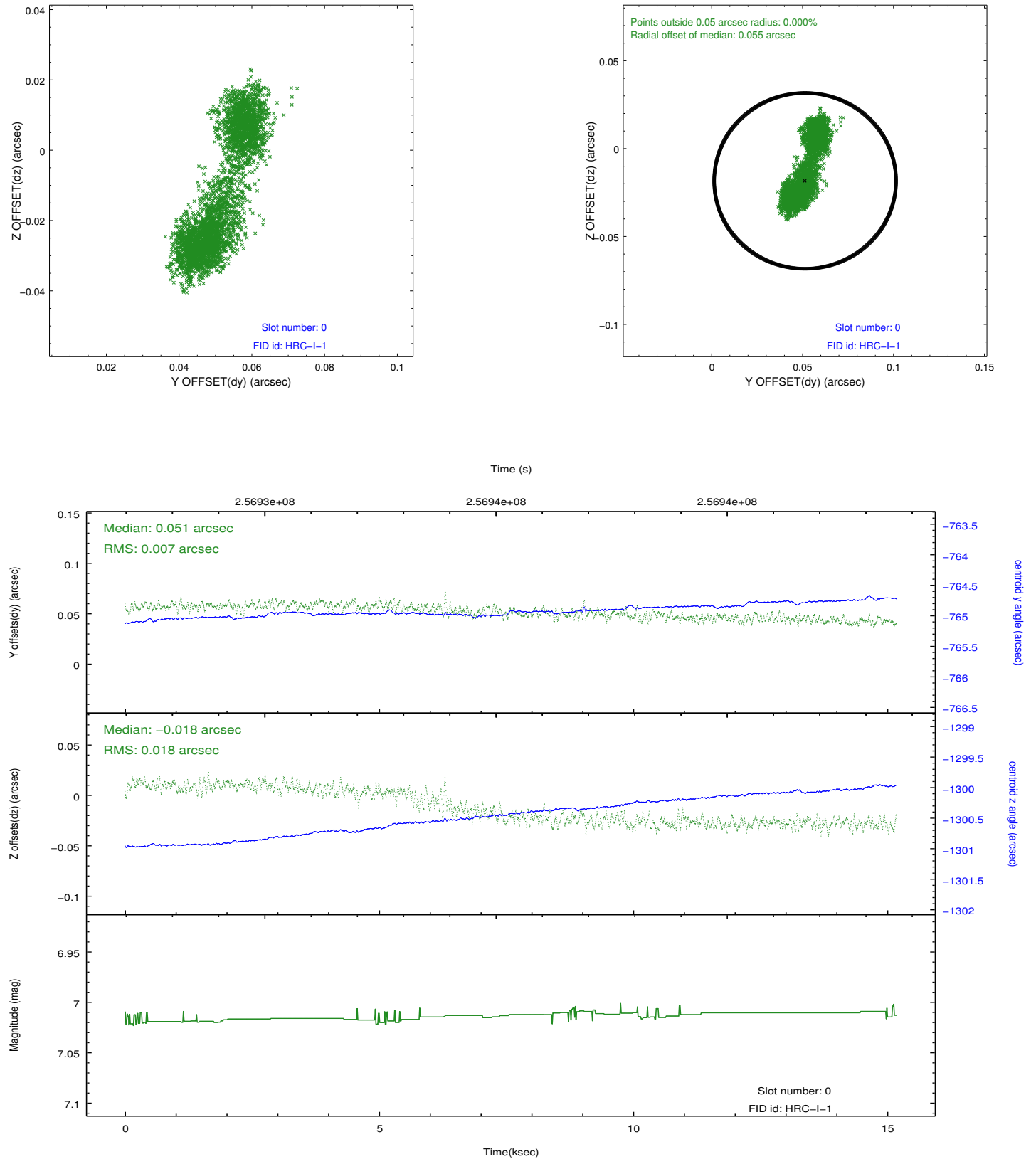


## 2.4.5 Slot 7

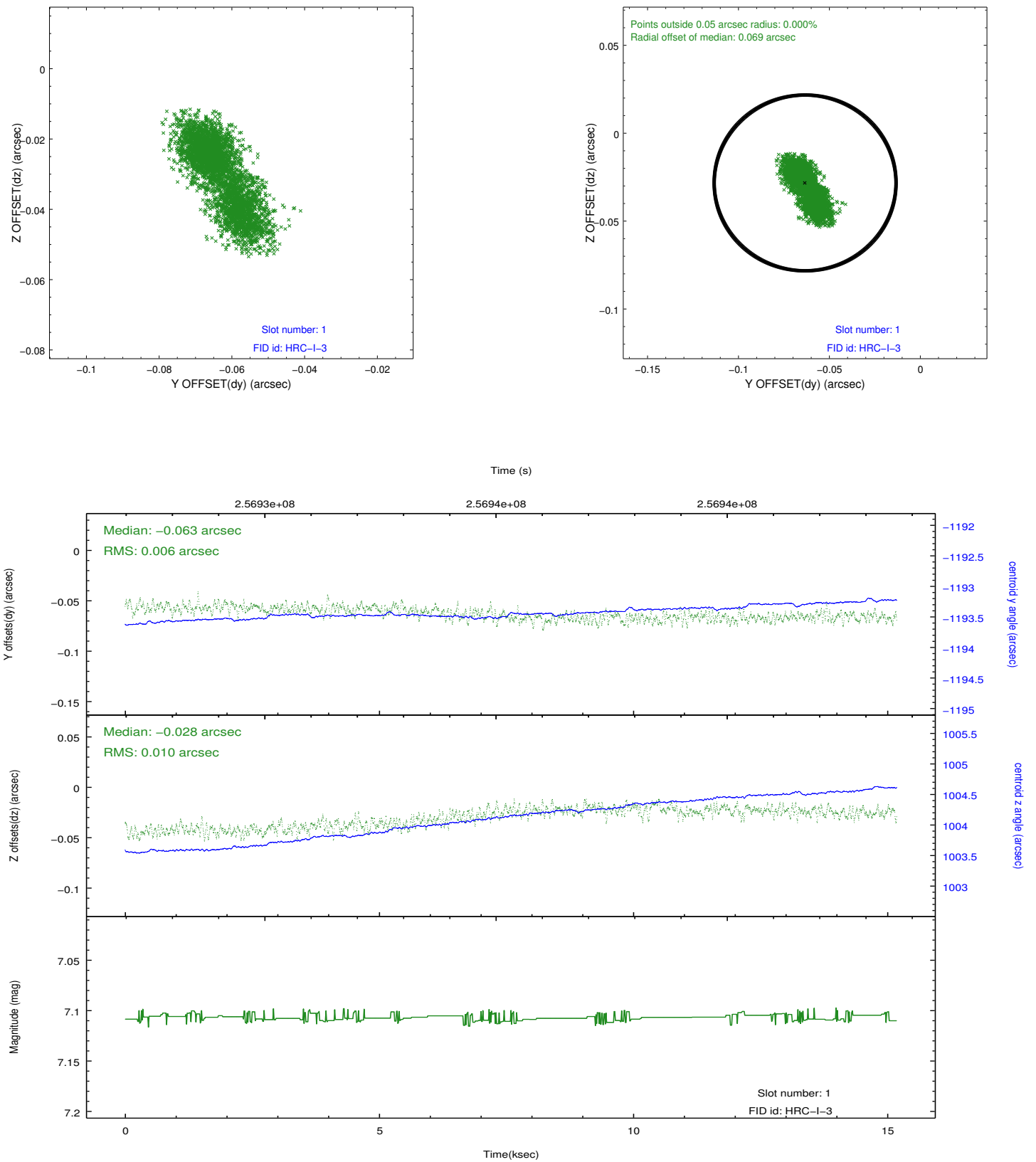


## 2.5 FID Slots

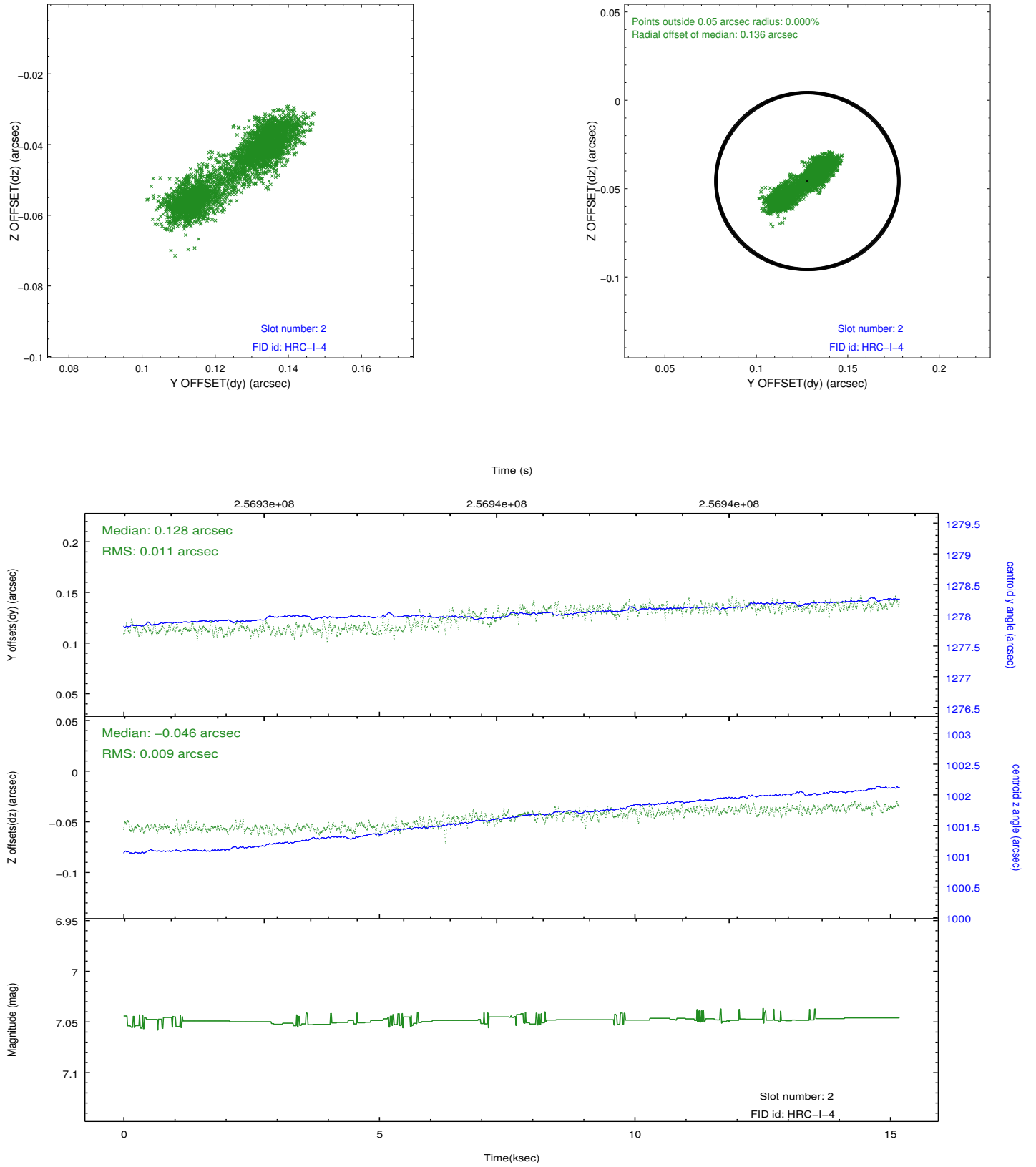
### 2.5.1 Slot 0



## 2.5.2 Slot 1



### 2.5.3 Slot 2



## A Summary

### A.1 Status

V&V Scientist	Jen Lauer
V&V Date (YYYY-MM-DD)	2012.08.12
V&V Edition	1
V&V Disposition and Status	OK
V&V Charge Time	15.1812757

### A.2 Comments

Joint proposal with NRAO.