

V&V Reference Report

L2 ASCDS Version : 8.4.3

Observation 6418 - L2 Version 2
Chandra X-Ray Center

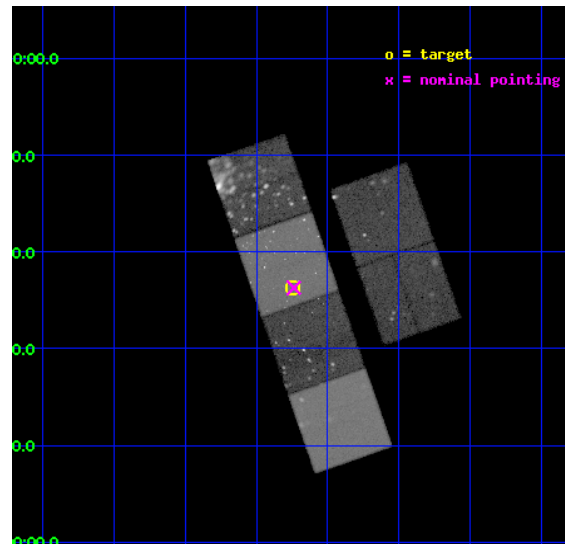
L2 Processing Date : Mar 30 2012

Contents

1	Front	2
2	OBI	3
2.1	OBI	3
2.1.1	Images	3
2.1.2	Bias	3
2.1.3	Parameters	4
2.1.4	Events	4
2.2	Compared Parameters	5
2.3	Aspect	6
2.4	Star Slots	9
2.4.1	Slot 3	9
2.4.2	Slot 4	10
2.4.3	Slot 5	11
2.4.4	Slot 6	12
2.4.5	Slot 7	13
2.5	FID Slots	14
2.5.1	Slot 0	14
2.5.2	Slot 1	15
2.5.3	Slot 2	16
A	Summary	17
A.1	Status	17
A.2	Comments	17

1 Front

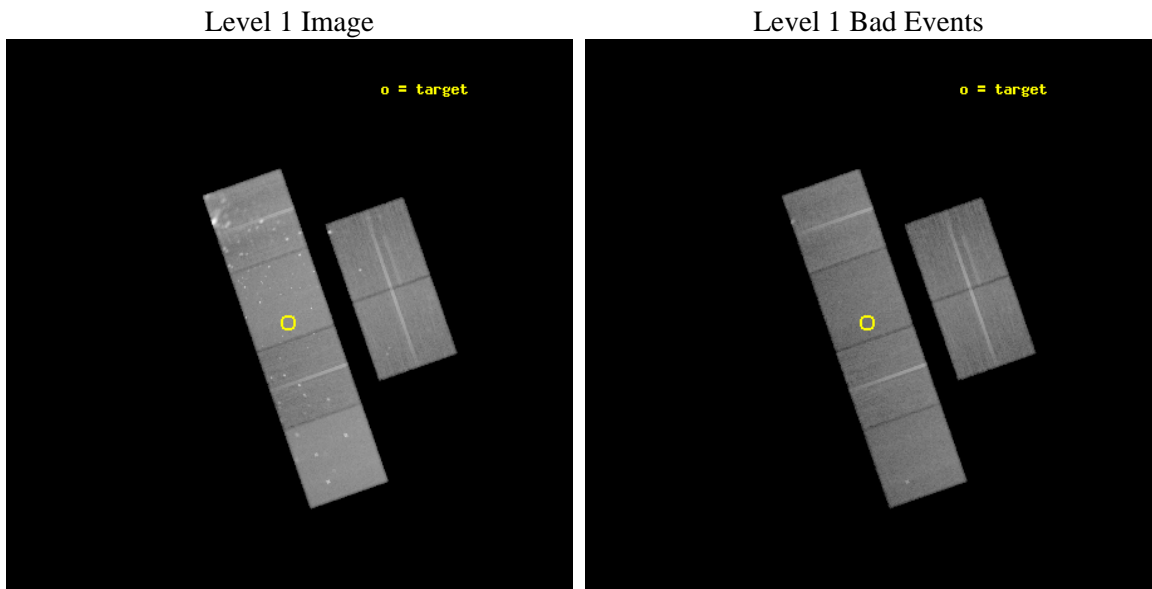
seq_num	200393	Sequence number
obs_id	6418	Observation id
title	Monitoring the X-ray emission of V1118 Ori during its outburst	Pro
observer	Prof. Marc Audard	Principal investigator
object	V1118 Ori	Source name
dtcycle	0	
cycle	P	events from which exps? Prim/Second/Both
ra_targ	83.68625	Observer's specified target RA [deg]
dec_targ	-5.561472	Observer's specified target Dec [deg]
ra_nom	83.684237854936	Nominal RA [deg]
dec_nom	-5.5621095137042	Nominal Dec [deg]
roll_nom	250.7668045782	Nominal Roll [deg]
revision	2	Processing version of data
ontime	29951.600443423	Sum of GTIs [s]
livetime	29572.33524392	Livetime [s]
ontime2	29948.400493205	Sum of GTIs [s]
ontime3	29948.236233562	Sum of GTIs [s]
ontime5	29951.559403419	Sum of GTIs [s]
ontime6	29951.518363416	Sum of GTIs [s]
ontime7	29951.600443423	Sum of GTIs [s]
ontime8	29948.19532311	Sum of GTIs [s]
l2events	567107	Number of level 2 events



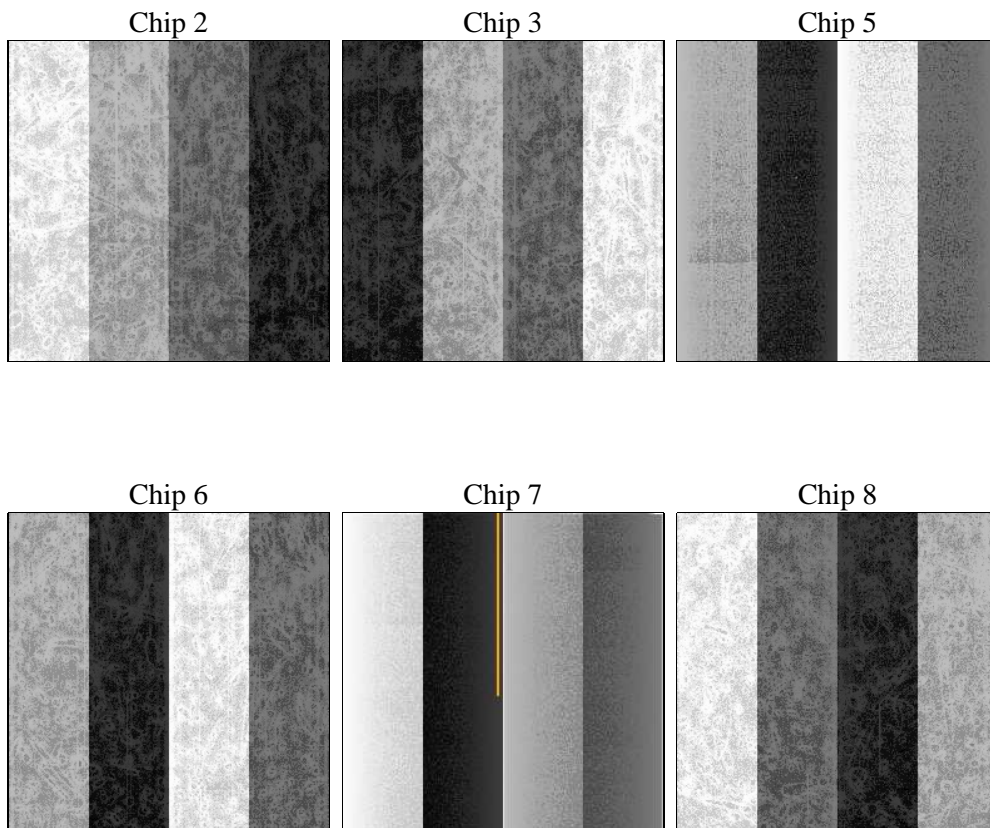
2 OBI

2.1 OBI

2.1.1 Images



2.1.2 Bias



2.1.3 Parameters

obi_num	0	Obi number	sched_exp_time	30000.000000	[s] Scheduled observation exposure time
ascdsver	8.4.3.1	Processing system revision	ontime	29951.600443423	Sum of GTIs [s]
caldsver	4.4.8	 	ontime2	29948.400493205	Sum of GTIs [s]
date	2012-03-30T19:24:04	Date and time of file creation	ontime3	29948.236233562	Sum of GTIs [s]
revision	2	Processing version of data	ontime5	29951.559403419	Sum of GTIs [s]
			ontime6	29951.518363416	Sum of GTIs [s]
			ontime7	29951.600443423	Sum of GTIs [s]
			ontime8	29948.19532311	Sum of GTIs [s]
			l1events	2023822	Number of level 1 events

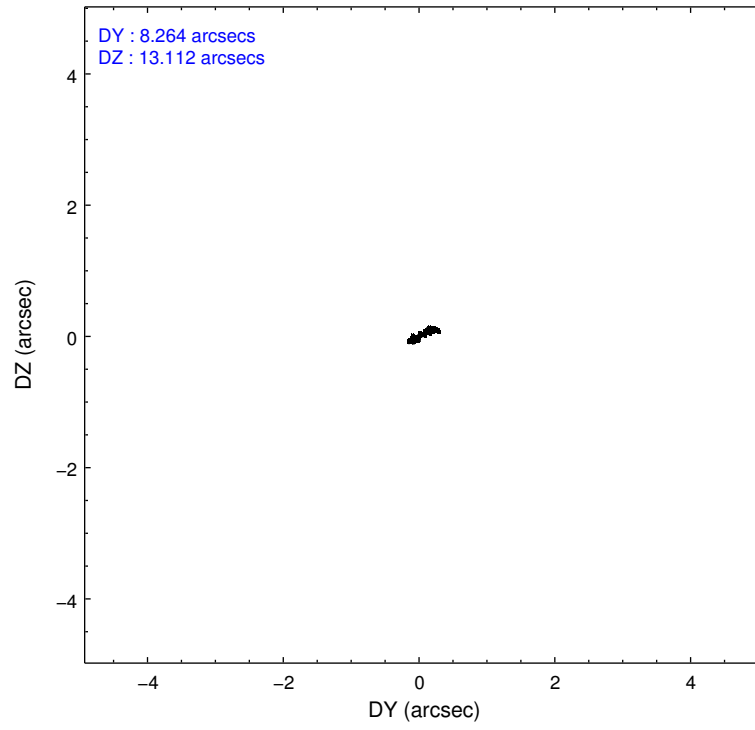
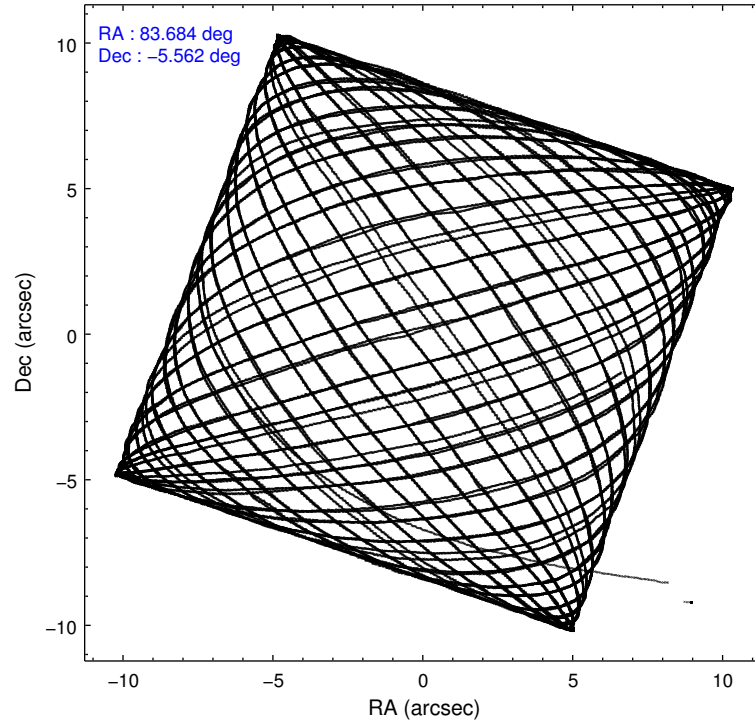
2.1.4 Events

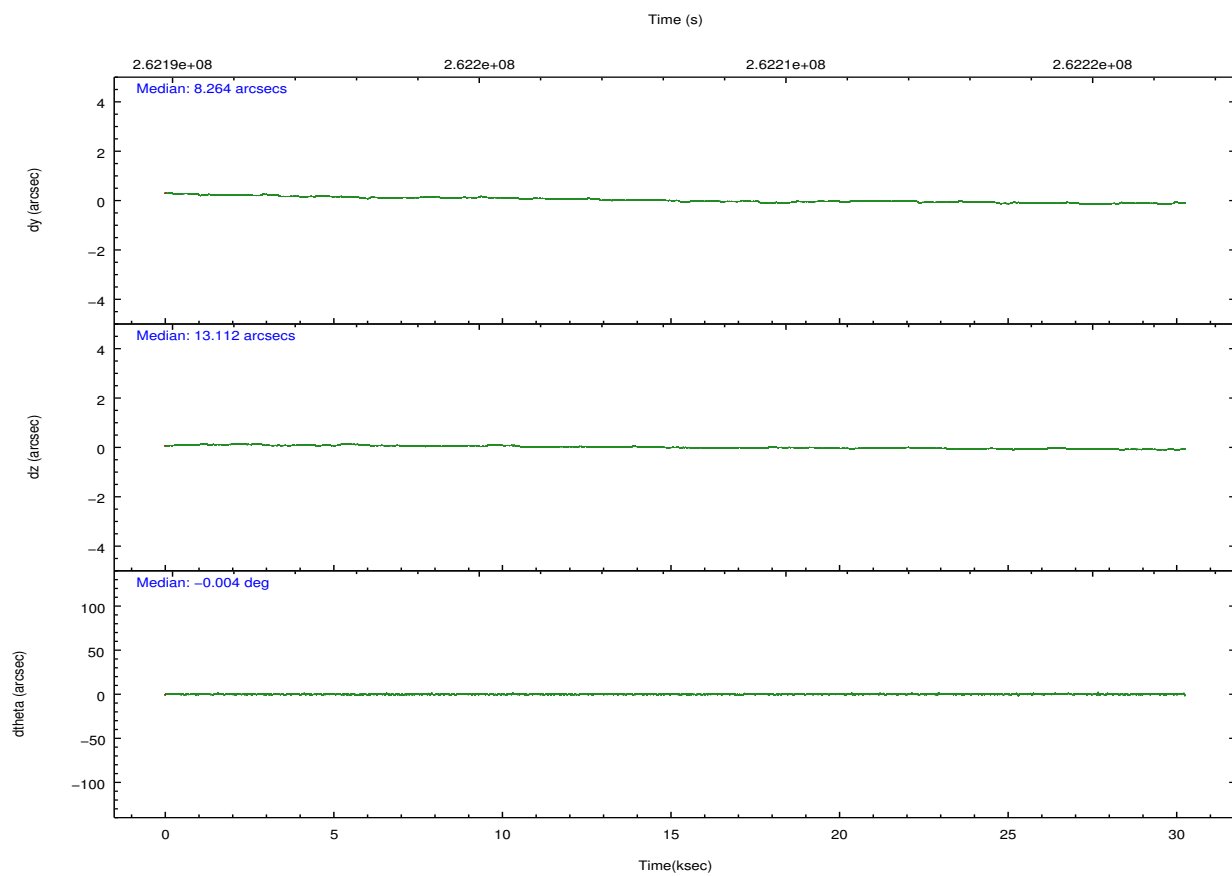
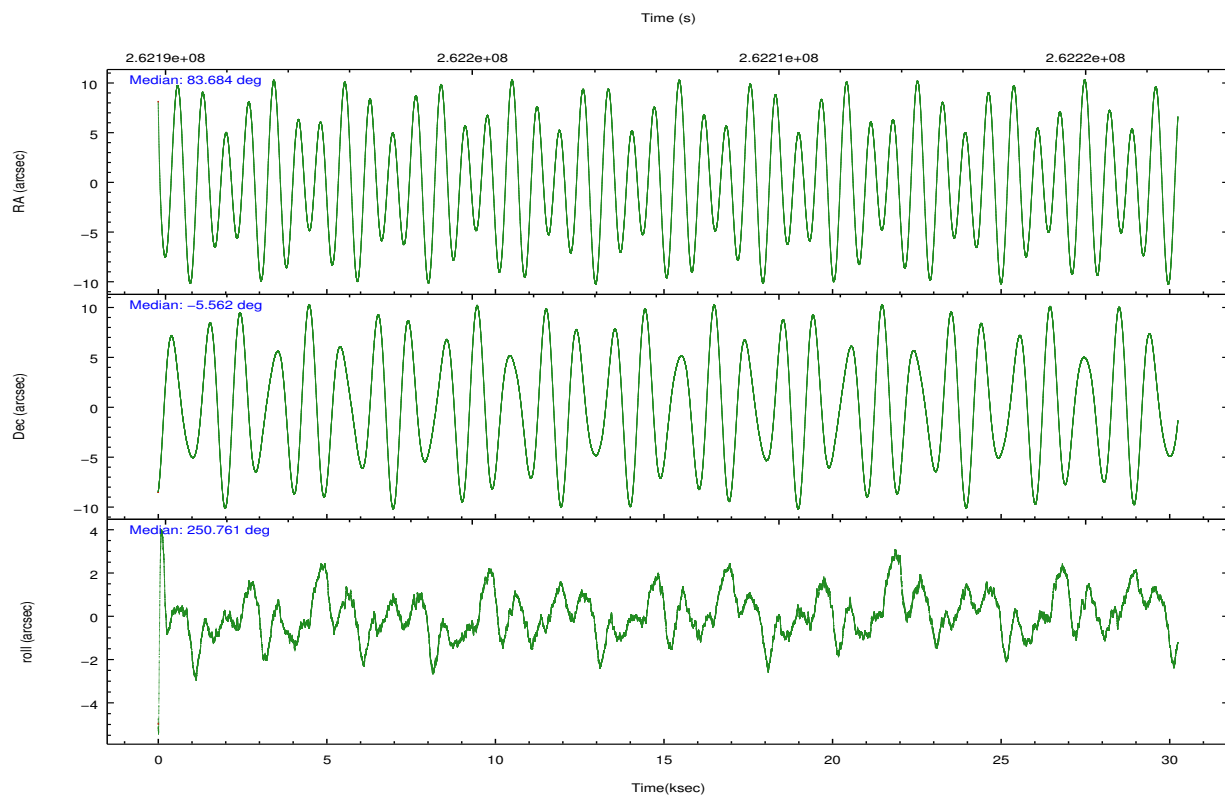
	ccd 2	ccd 3	ccd 5	ccd 6	ccd 7	ccd 8		ccd 2	ccd 3	ccd 5	ccd 6	ccd 7	ccd 8
level 1 events	273536	257816	403755	270973	379798	437944	grade 0 events	15548	18703	21069	19747	19972	106203
rejected events	240489	220759	214567	231027	209095	263227		5%	7%	5%	7%	5%	24%
rejected %	87%	85%	53%	85%	55%	60%	grade 1 events	175	204	1238	179	367	726
								0%	0%	0%	0%	0%	0%
							grade 2 events	6688	6507	55542	7506	35756	26286
								2%	2%	13%	2%	9%	6%
							grade 3 events	2916	3080	7709	3166	15659	10907
								1%	1%	1%	1%	4%	2%
							grade 4 events	2893	3253	7541	3160	15514	10403
								1%	1%	1%	1%	4%	2%
							grade 5 events	10200	11794	29127	12566	34365	16436
								3%	4%	7%	4%	9%	3%
							grade 6 events	5011	5522	97366	6378	83840	20962
								1%	2%	24%	2%	22%	4%
							grade 7 events	230105	208753	184163	218271	174325	246021
								84%	80%	45%	80%	45%	56%

2.2 Compared Parameters

Parameter	Planned	Actual	Parameter	Planned	Actual
Instrument	ACIS	ACIS	Obspar format version number	7	7
Detector	ACIS-235678	ACIS-235678	Obspar file type	PREDICTED	ACTUAL
Grating	NONE	NONE	Obspar update status	NONE	UPDATED
Data mode	VFAINT	VFAINT	Number of optional ACIS chips dropped	0	0
Observation mode	POINTING	POINTING	On-chip summing requested	N	N
[deg] Pointing RA	83.678773	83.68423785493647	Subarray requested	NONE	NONE
[deg] Pointing Dec	-5.535415	-5.562109513704156	Alternating exposures requested	N	N
[deg] Pointing Roll	250.609654	250.7668045781975	[s] Primary exposure time	0.000000	3.2
[mm] SIM focus pos	-0.684267	-0.6828225247311905			
[mm] SIM defocus	0	0.001444936568705701			
[mm] SIM translation stage pos	-190.132523	-190.1425803651734			
[mm] SIM translation stage offset	0	0.01005778216563158			
[s] Observation start time (MET)	262191508.184000	262190514.79309			
Observation start date	2006-04-23T14:57:23	2006-04-23T14:41:54			
[s] Observation end time (MET)	262221508.184000	262222289.28207			
Observation end date	2006-04-23T23:17:23	2006-04-23T23:31:29			
Read mode	TIMED	TIMED			

2.3 Aspect



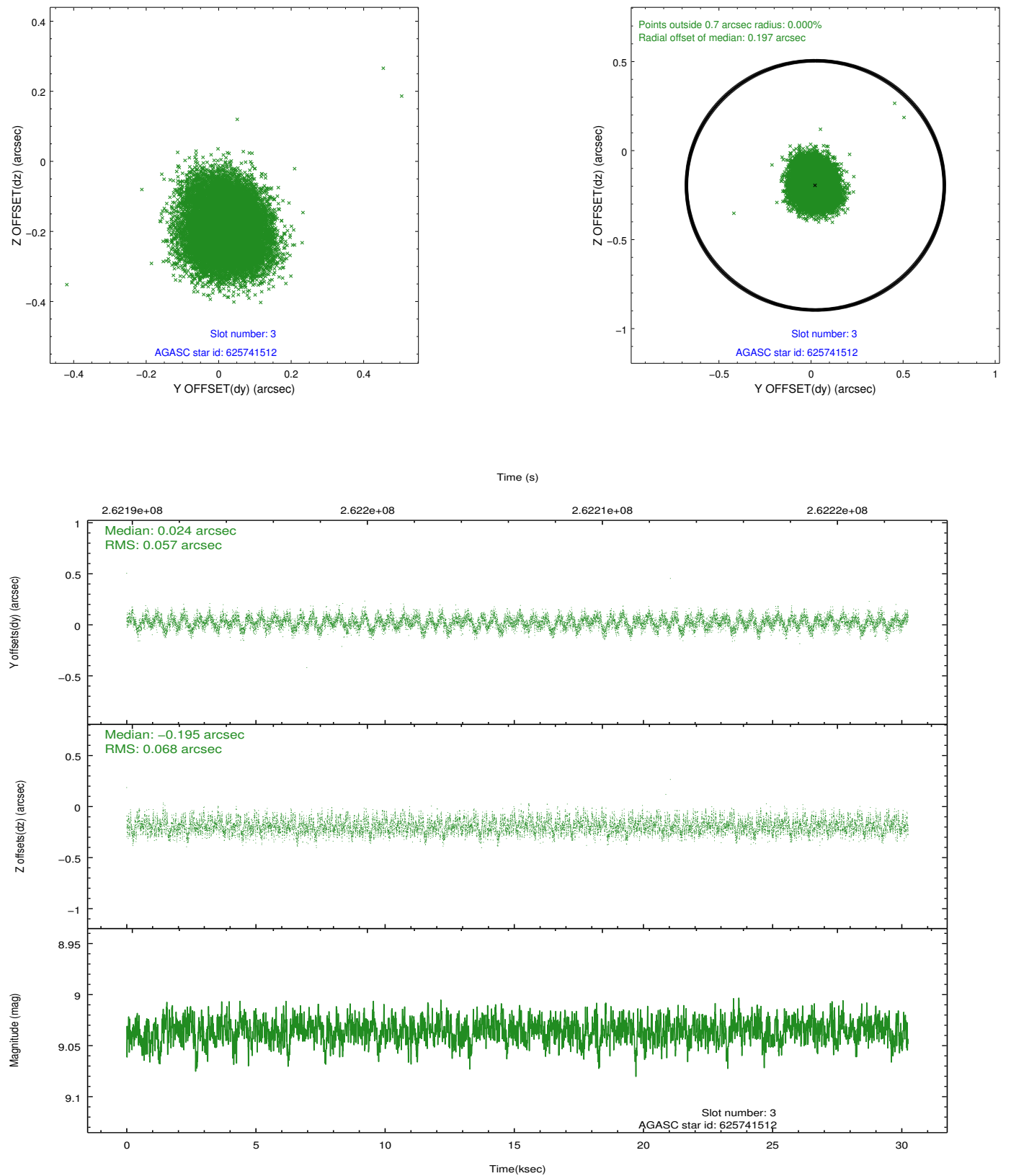


Slot Statistics

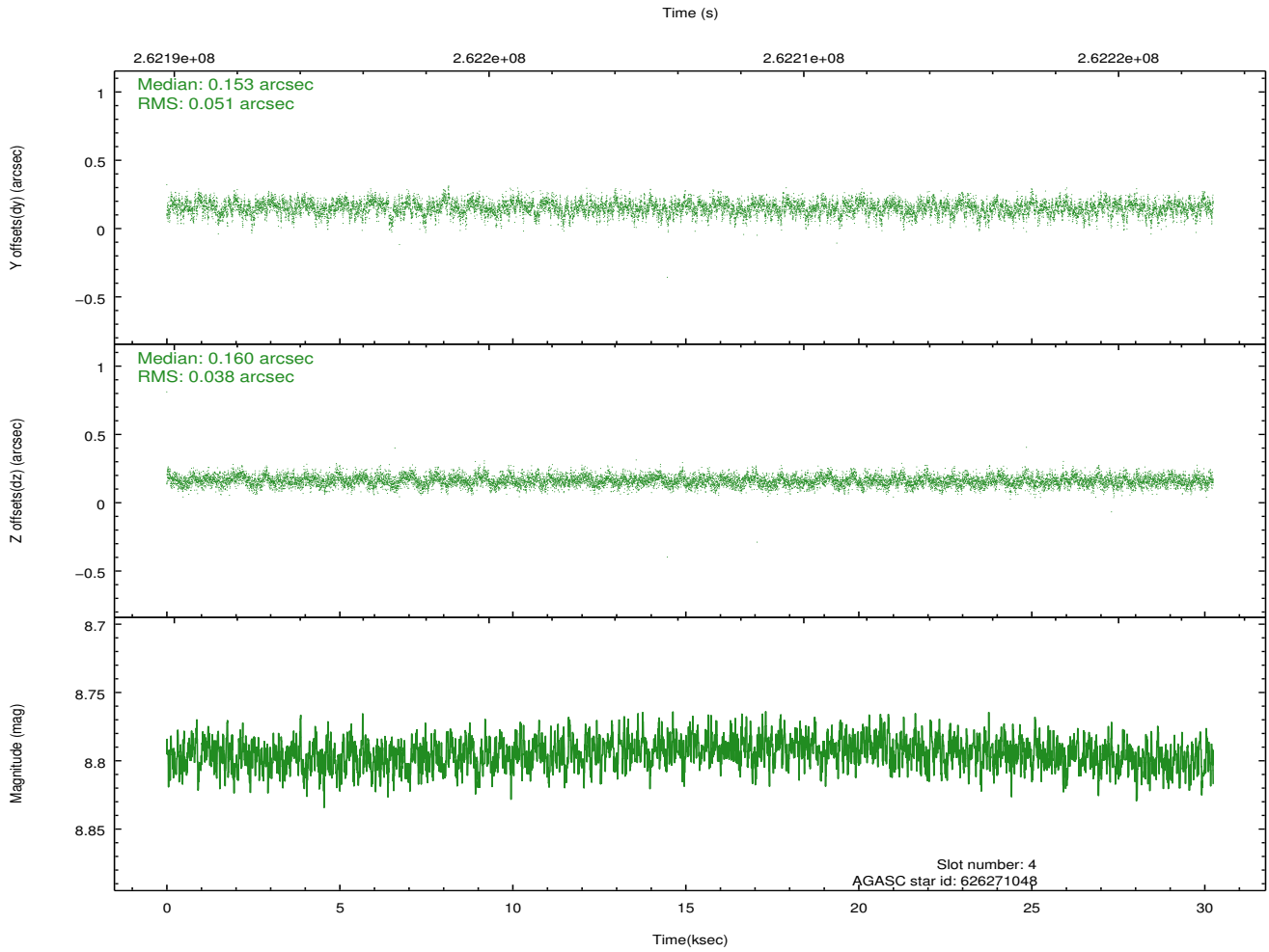
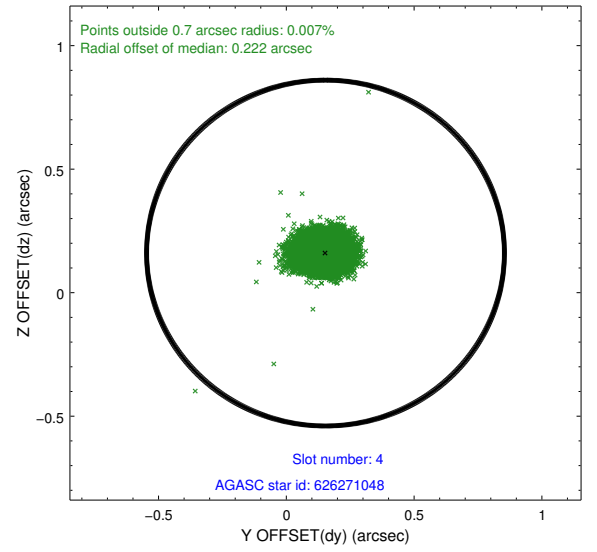
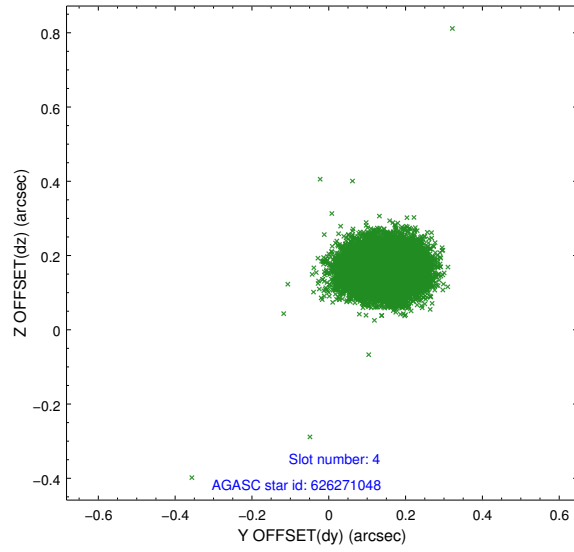
slot	status	id	mag	n_pts	med_dy	med_dz	dr1	dr2	ra	dec	mean_y	mean_z
0	FID	ACIS-S-2	7.10	7377	-0.008	-0.054	0.007	0.012	0.000000	0.000000	-761.10	-1734.45
1	FID	ACIS-S-4	7.19	7378	0.109	0.018	0.010	0.018	0.000000	0.000000	2152.28	174.01
2	FID	ACIS-S-5	7.23	7377	-0.133	0.044	0.010	0.017	0.000000	0.000000	-1813.96	167.82
3	GUIDE	625741512	9.04	14745	0.024	-0.195	0.096	0.151	83.281151	-5.340585	-187.59	-1577.17
4	GUIDE	626271048	8.80	14750	0.153	0.160	0.066	0.110	83.996760	-6.275047	2134.37	1957.97
5	GUIDE	626273040	7.11	14756	-0.089	0.089	0.073	0.121	84.062610	-5.647920	-73.95	1432.08
6	GUIDE	625740992	9.08	14741	-0.136	-0.069	0.116	0.201	83.193672	-4.960928	-1372.31	-2327.59
7	GUIDE	626272880	7.66	14750	0.042	0.010	0.061	0.100	83.815609	-6.032748	1526.33	1056.69

2.4 Star Slots

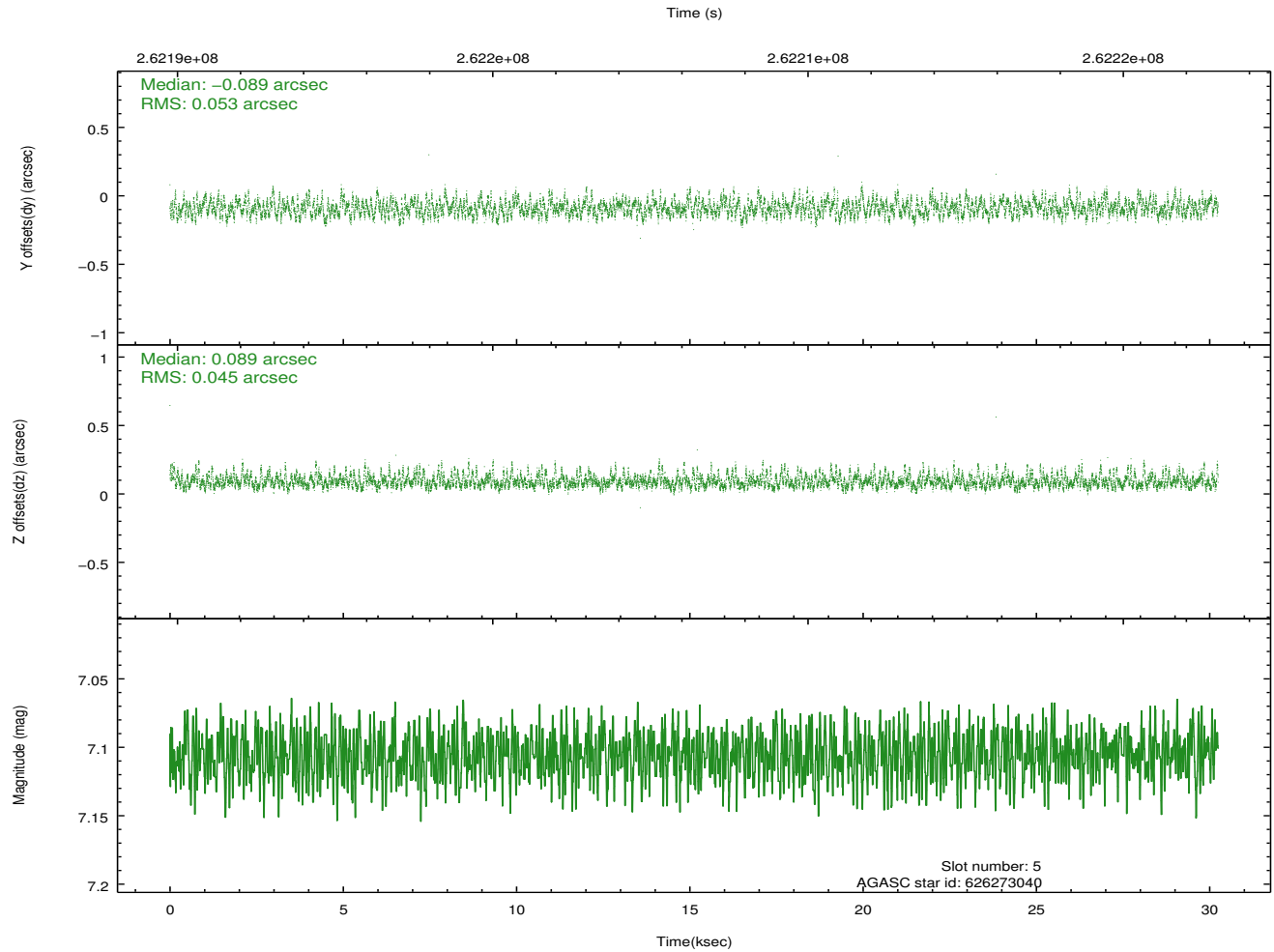
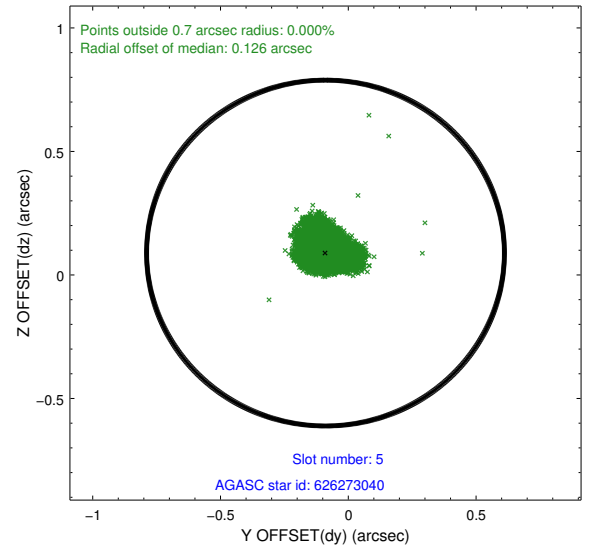
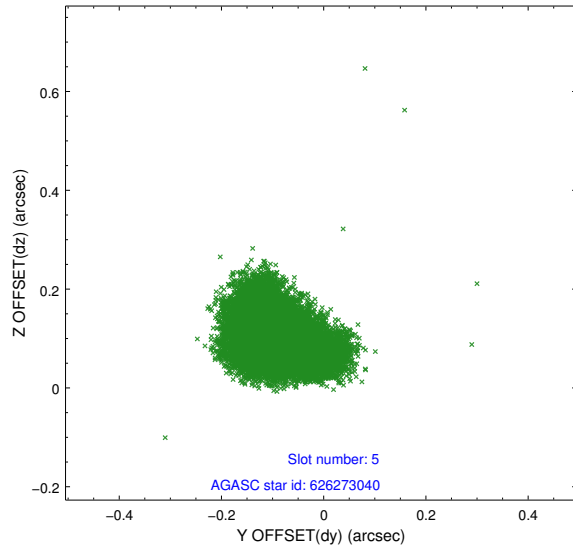
2.4.1 Slot 3



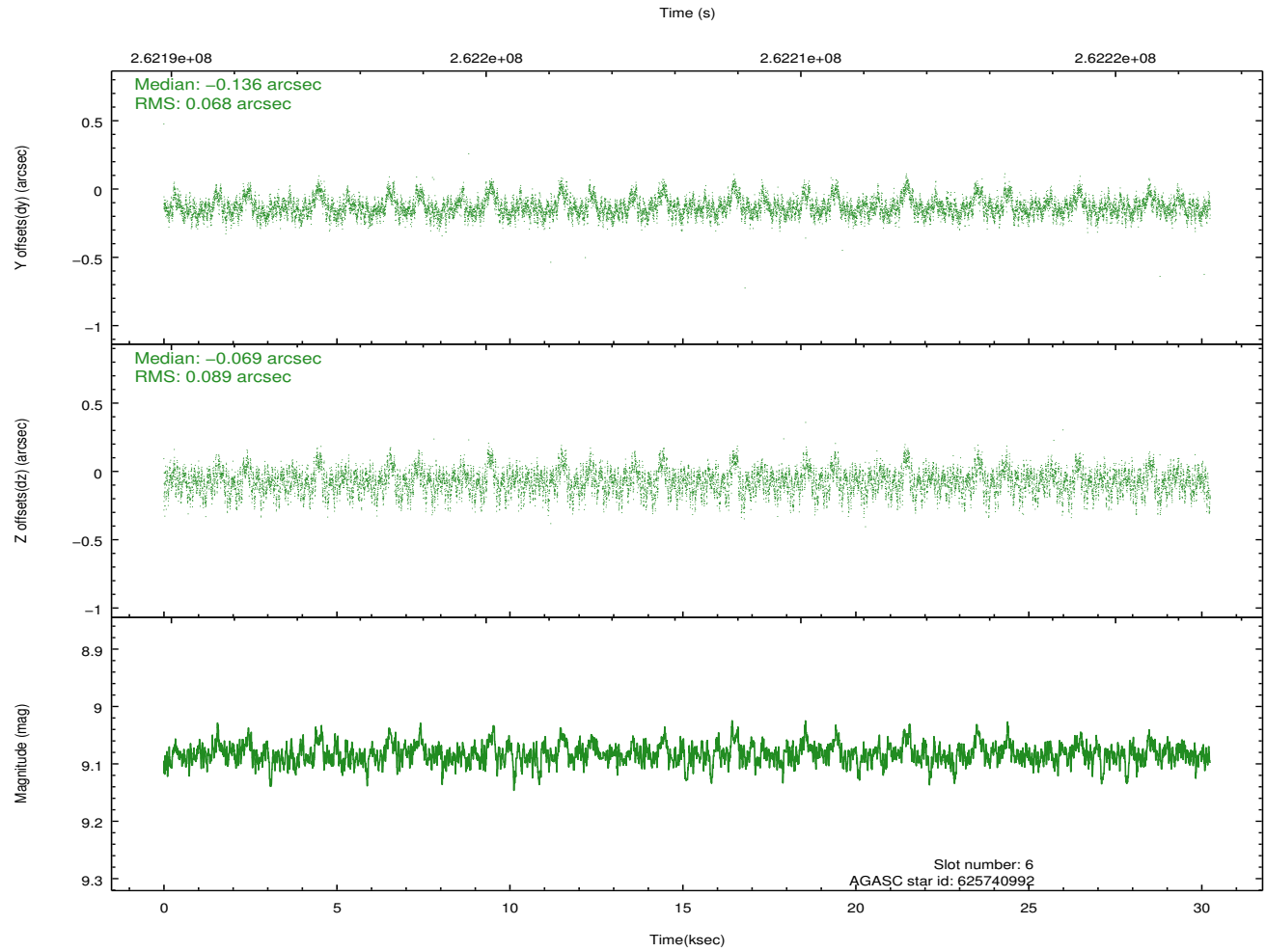
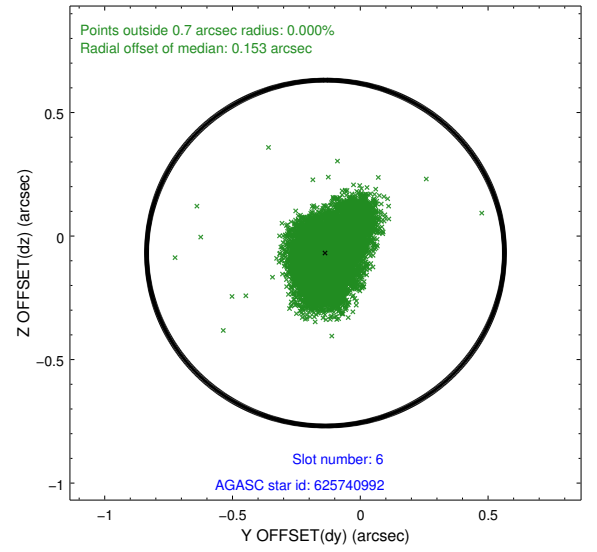
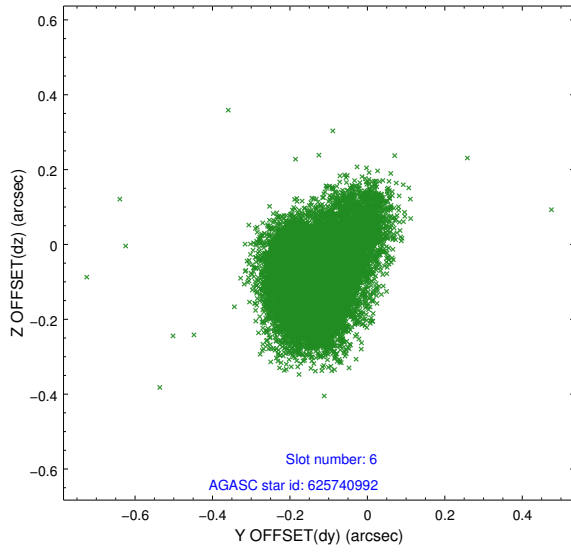
2.4.2 Slot 4



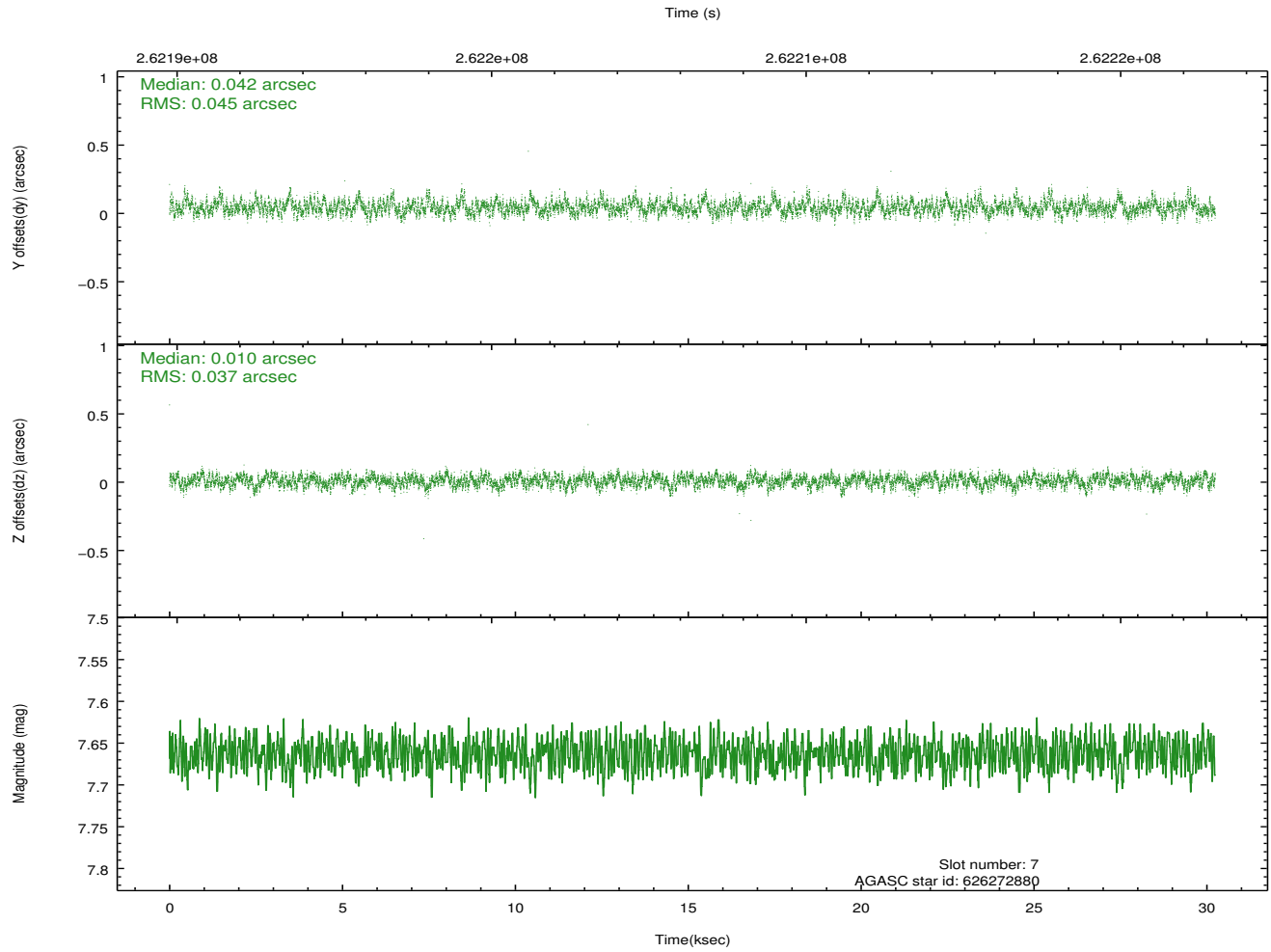
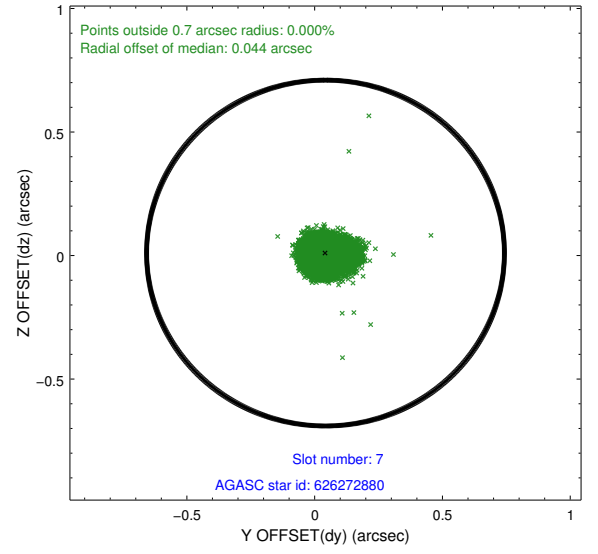
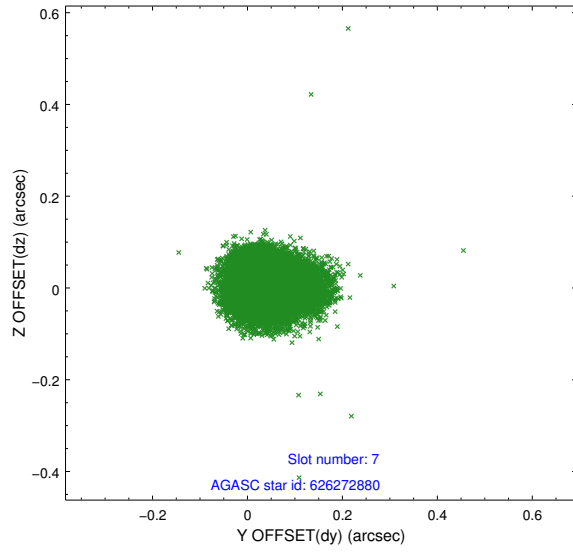
2.4.3 Slot 5



2.4.4 Slot 6

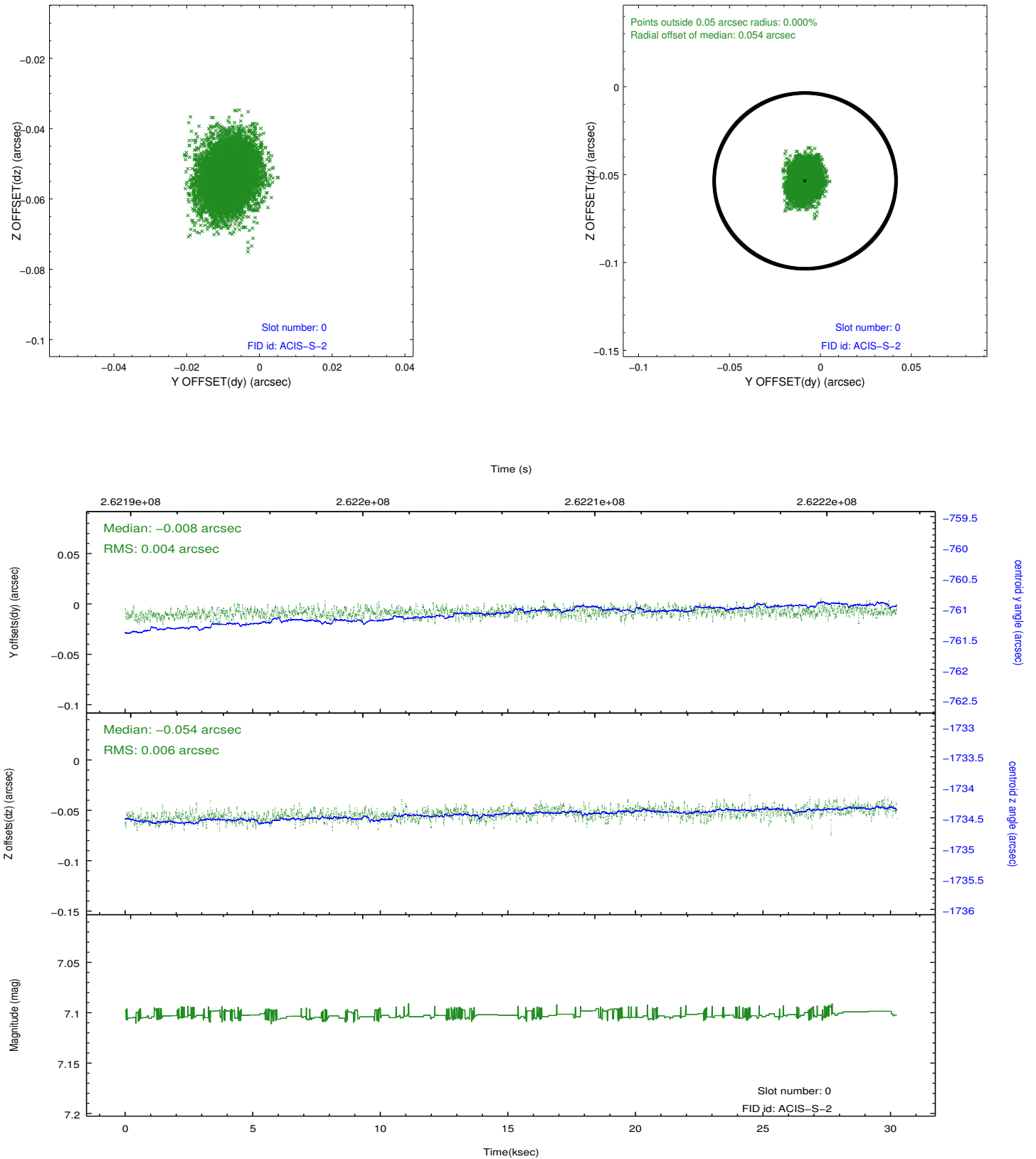


2.4.5 Slot 7

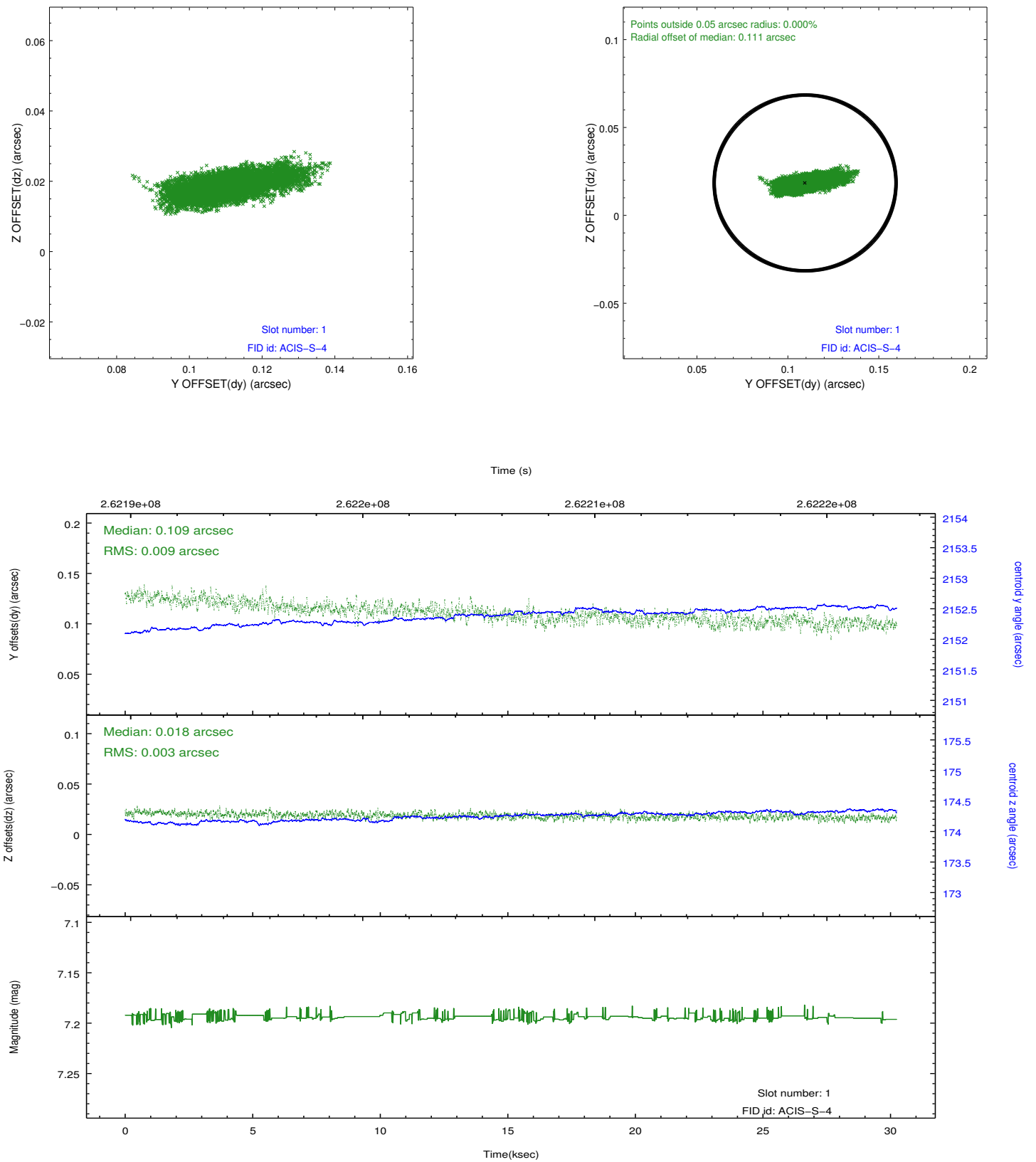


2.5 FID Slots

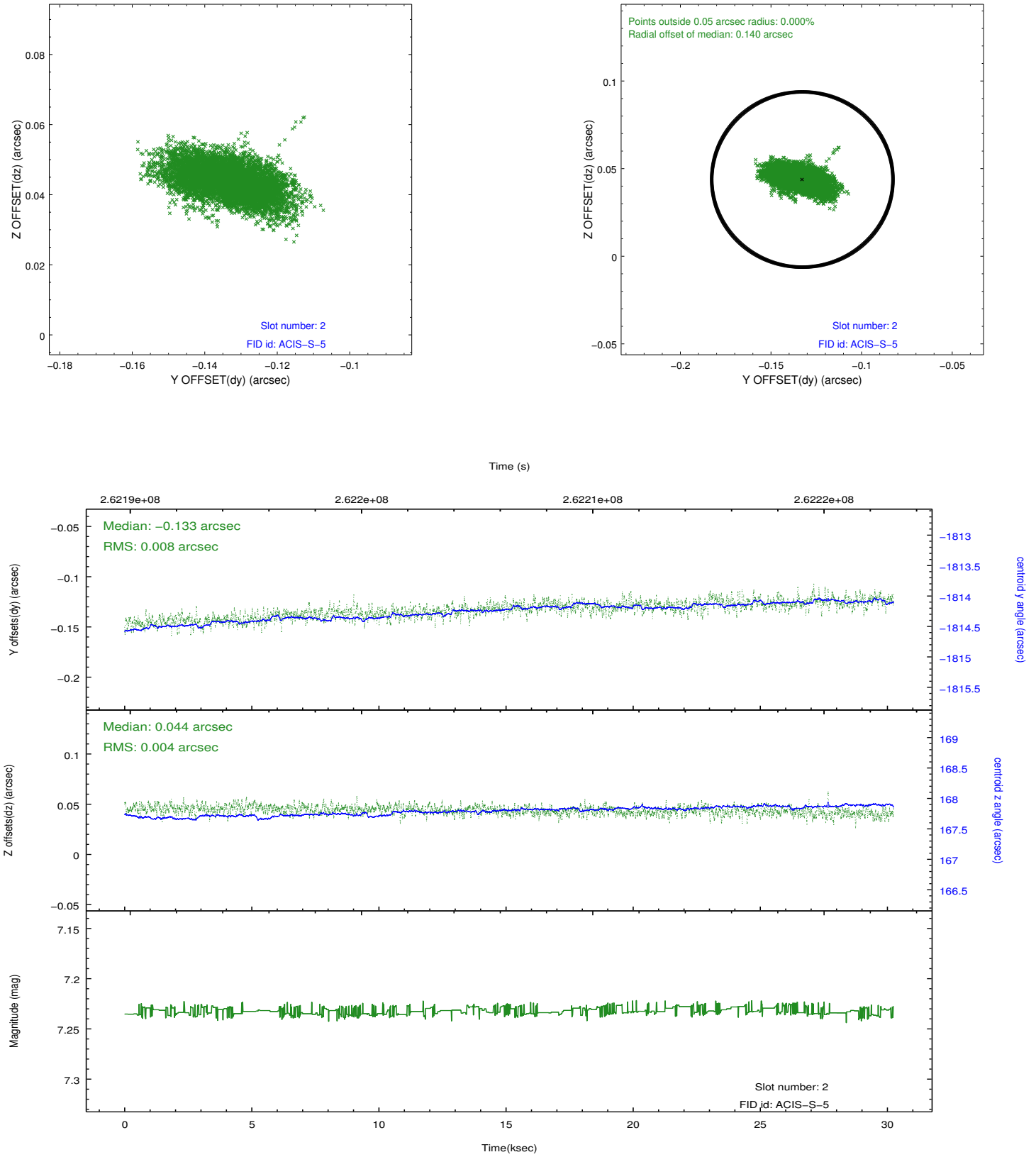
2.5.1 Slot 0



2.5.2 Slot 1



2.5.3 Slot 2



A Summary

A.1 Status

V&V Scientist	Jen Lauer
V&V Date (YYYY-MM-DD)	2012.04.02
V&V Edition	1
V&V Disposition and Status	OK
V&V Charge Time	29.9519998

A.2 Comments