

V&V Reference Report

L2 ASCDS Version : 8.5.1.1

Observation 6298 - L2 Version 4
Chandra X-Ray Center

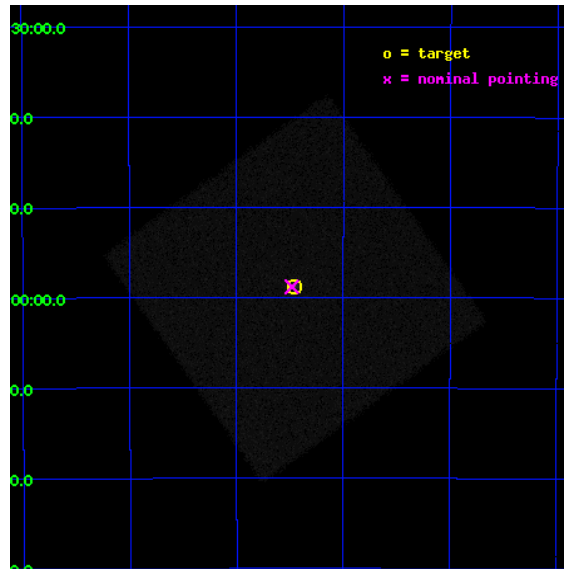
L2 Processing Date : Dec 25 2012

Contents

1	Front	2
2	OBI	3
2.1	OBI	3
2.1.1	Images	3
2.1.2	Parameters	4
2.1.3	Events	4
2.2	Compared Parameters	5
2.3	Aspect	6
2.4	Star Slots	9
2.4.1	Slot 3	9
2.4.2	Slot 4	10
2.4.3	Slot 5	11
2.4.4	Slot 6	12
2.5	FID Slots	13
2.5.1	Slot 0	13
2.5.2	Slot 1	14
2.5.3	Slot 2	15
A	Summary	16
A.1	Status	16
A.2	Comments	16

1 Front

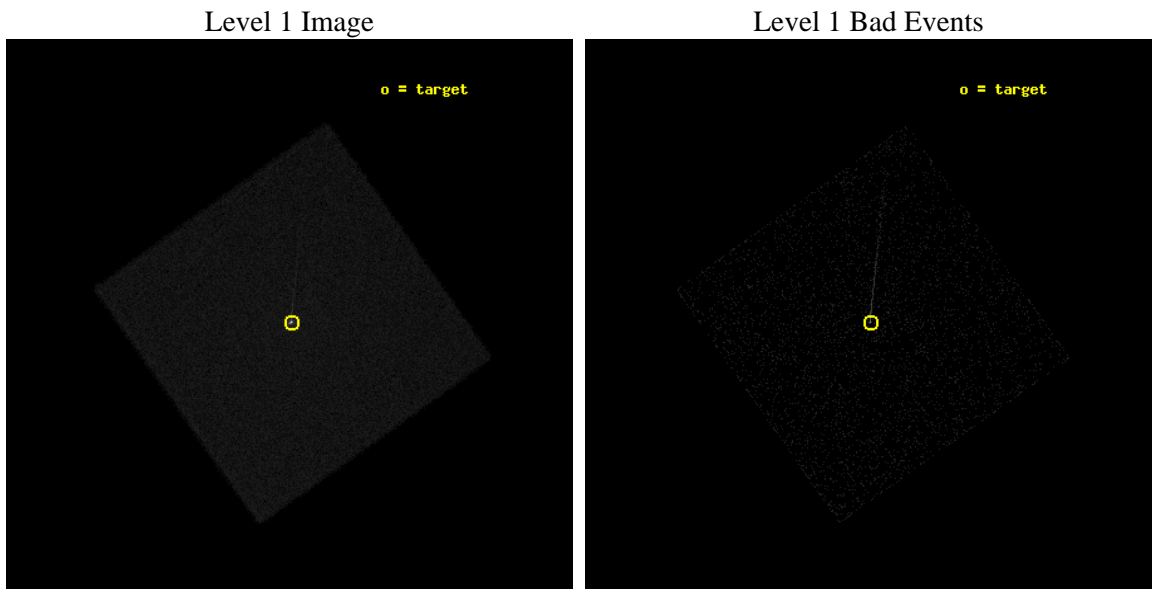
seq_num	400470	Sequence number
obs_id	6298	Observation id
title	Search for X-Ray Jets from a Millisecond Pulsar	Proposal title
observer	Prof. Deepto Chakrabarty	Principal investigator
object	SAX J1808.4-3658	Source name
ra_targ	272.114583	Observer's specified target RA [deg]
dec_targ	-36.978972	Observer's specified target Dec [deg]
ra_nom	272.1201561033	Nominal RA [deg]
dec_nom	-36.980087498764	Nominal Dec [deg]
roll_nom	9.7224288099823	Nominal Roll [deg]
revision	4	Processing version of data
ontime	4767.5314677358	[s]
livetime	4729.2628598348	Ontime multiplied by DTCOR
l2events	243268	Number of level 2 events



2 OBI

2.1 OBI

2.1.1 Images



2.1.2 Parameters

obi_num	0	Obi number	sched_exp_time	5000.000000	[s] Scheduled observation exposure time
ascdsver	8.5.1.1	Processing system revision	ontime	4767.5314677358	[s]
caldbver	4.5.5	 	l1events	386631	Number of level 1 events
date	2012-12-25T04:17:52	Date and time of file creation			
revision	4	Processing version of data			

2.1.3 Events

Level 1 Events

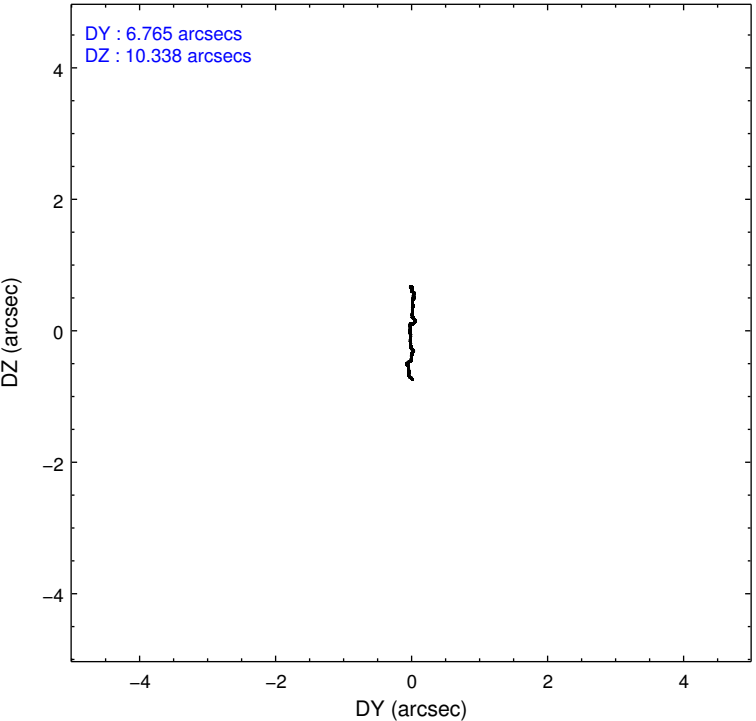
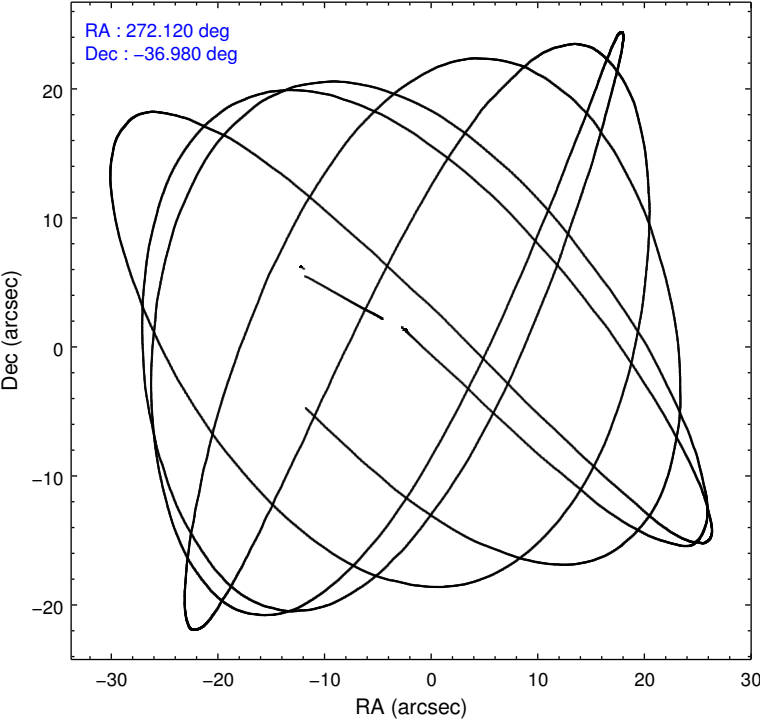
	segment 0
level 1 events	386631
rejected events	51446
rejected %	13%

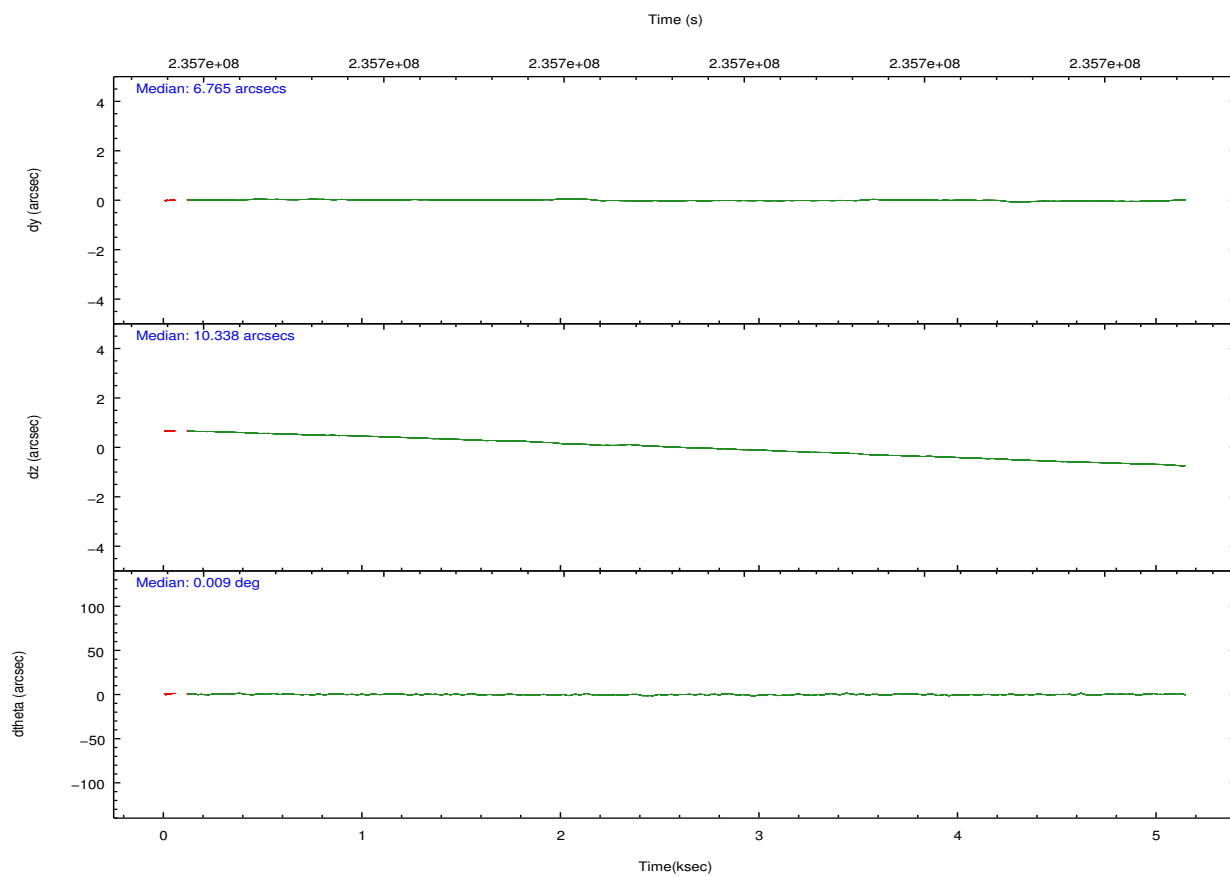
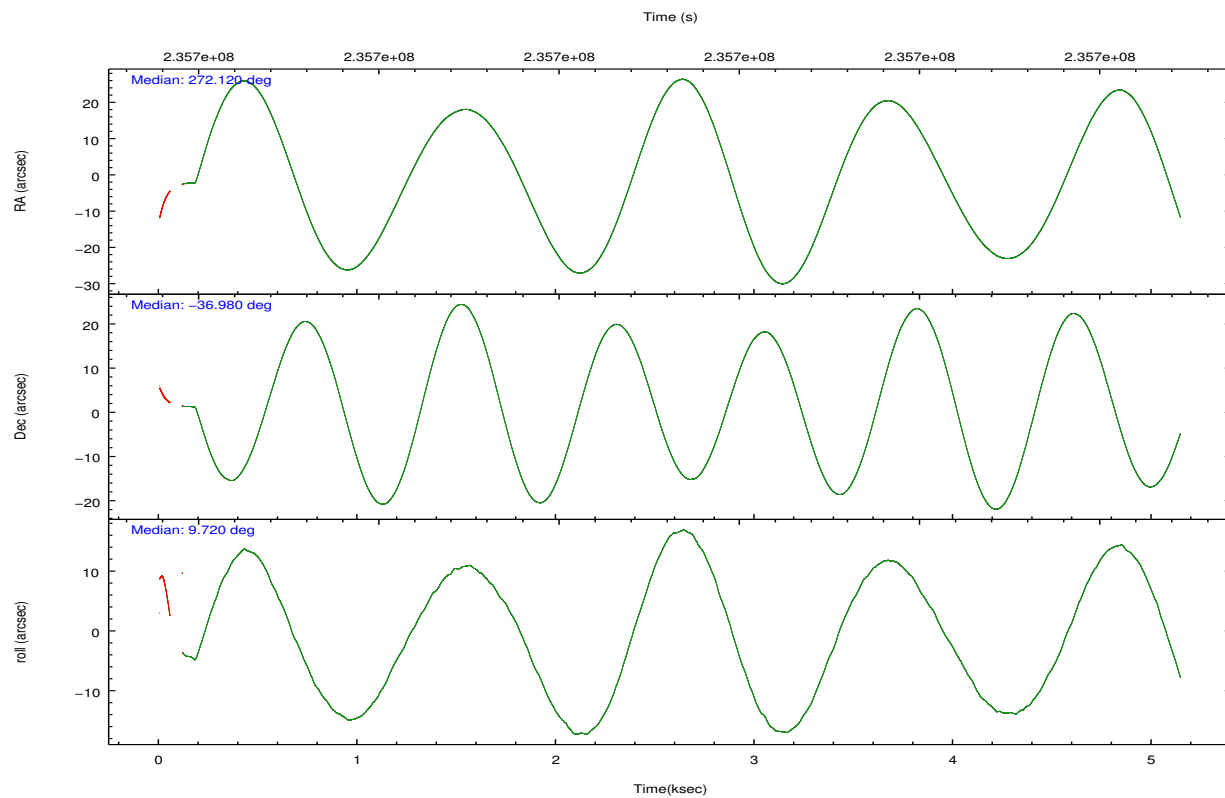
2.2 Compared Parameters

Parameter	Planned	Actual
Instrument	HRC	HRC
Detector	HRC-I	HRC-I
Grating	NONE	NONE
Data mode	OBSERVING	OBSERVING
Observation mode	POINTING	POINTING
[deg] Pointing RA	272.094078	272.1201561033016
[deg] Pointing Dec	-36.997696	-36.98008749876422
[deg] Pointing Roll	9.802186	9.722428809982283
[mm] SIM focus pos	-1.040293	-1.038866356238299
[mm] SIM defocus	0	0.001426264420575141
[mm] SIM translation stage pos	126.985494	126.9829799899862
[mm] SIM translation stage offset	0	0.002508901615314585
[s] Observation start time (MET)	235697188.184000	235695882.04483
Observation start date	2005-06-20T23:25:24	2005-06-20T23:04:42
[s] Observation end time (MET)	235702188.184000	235703017.07016
Observation end date	2005-06-21T00:48:44	2005-06-21T01:03:37

Parameter	Planned	Actual
Obspar format version number	7	7
Obspar file type	PREDICTED	ACTUAL
Obspar update status	NONE	UPDATED

2.3 Aspect



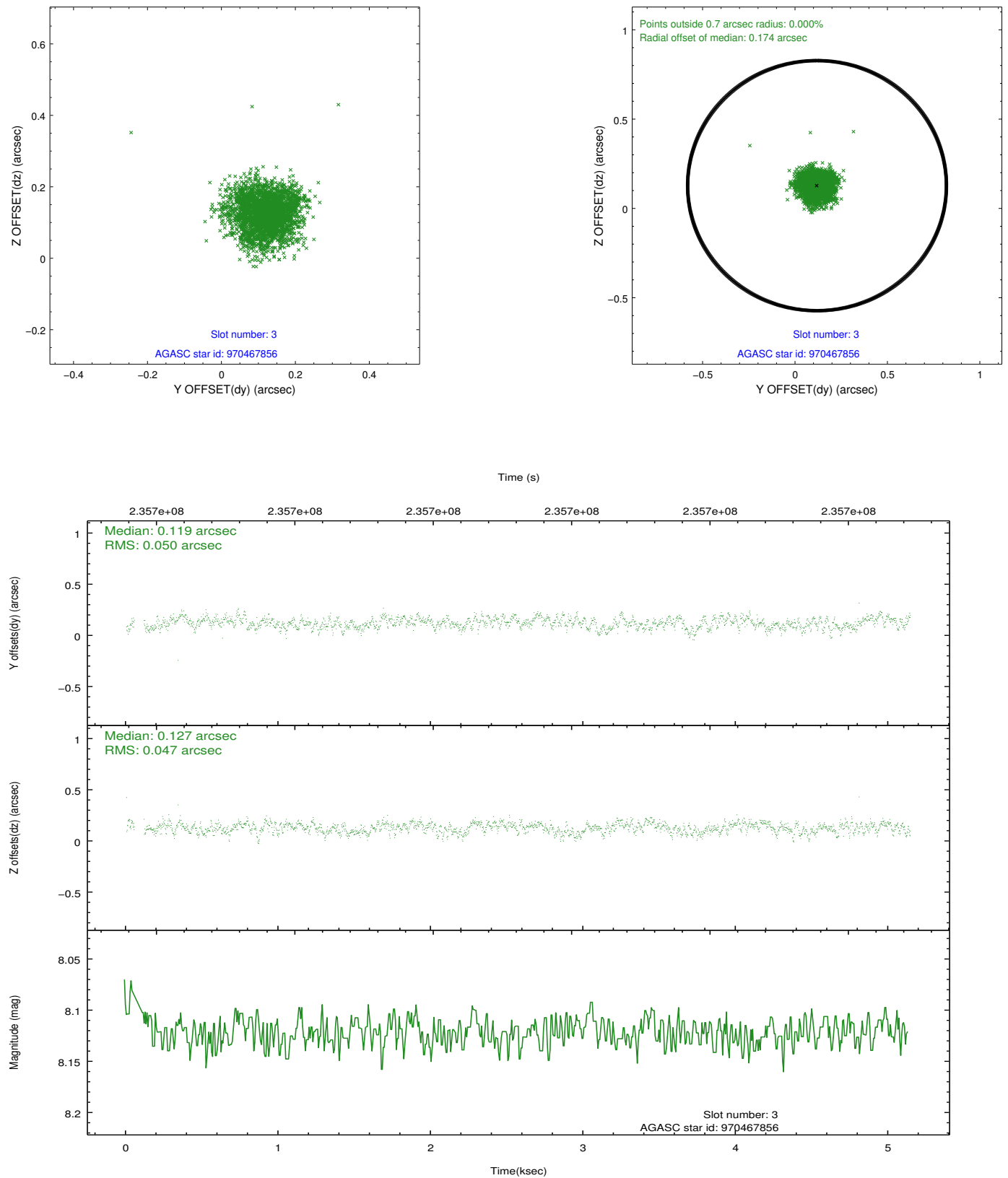


Slot Statistics

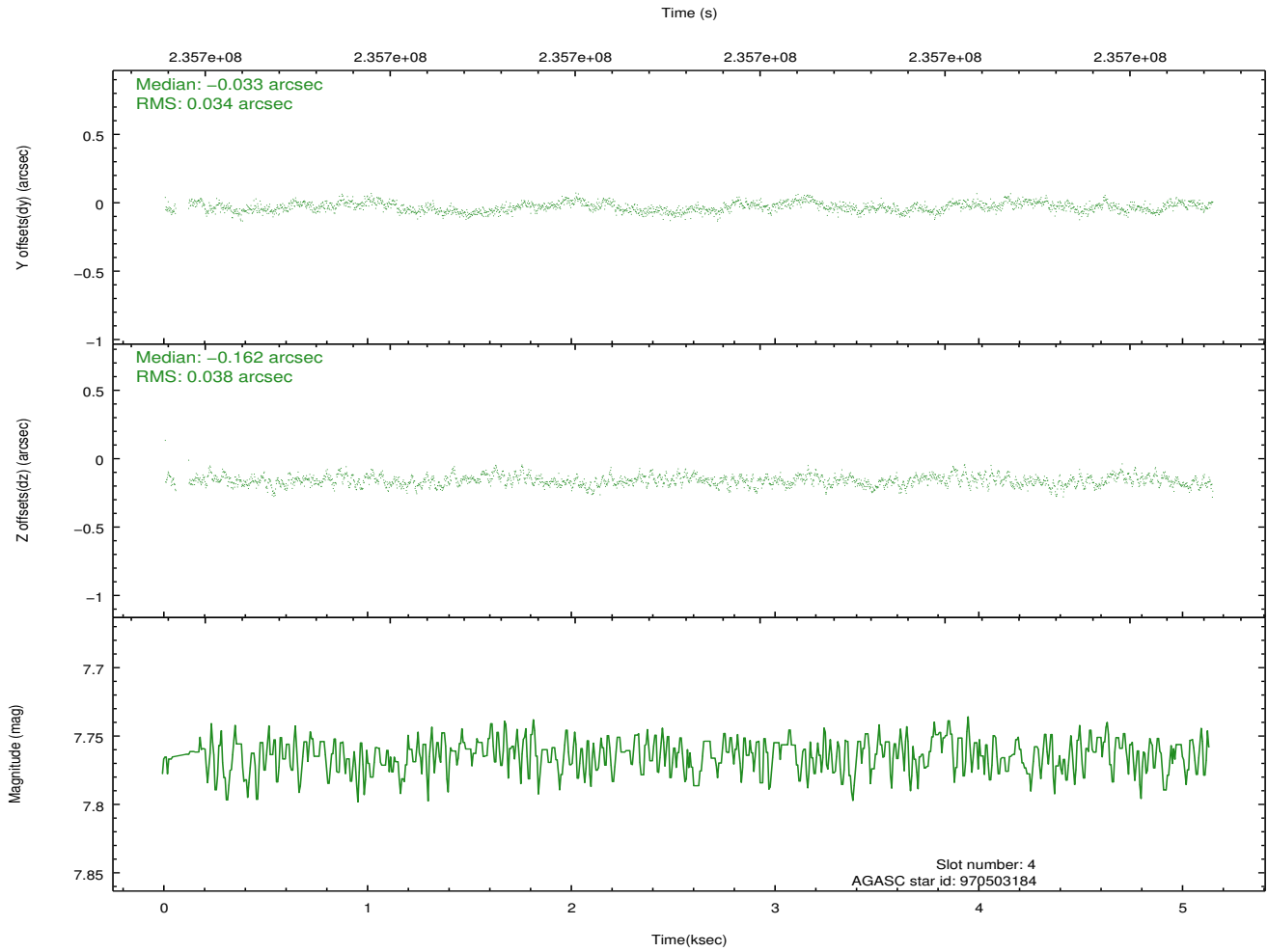
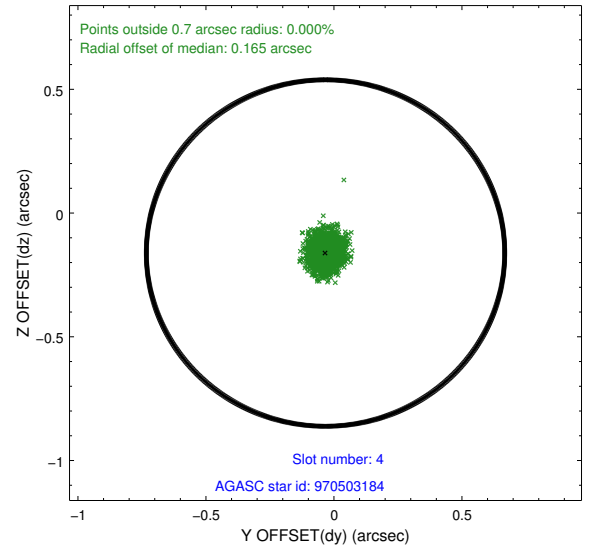
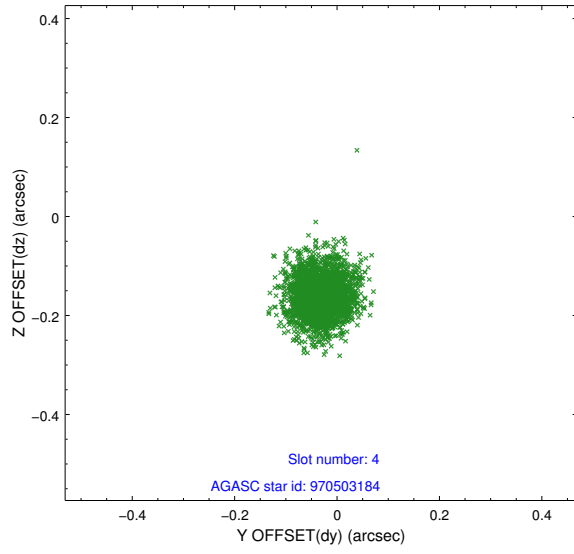
	status	id	mag	n_pts	med_dy	med_dz	drl
	FID	HRC-I-1	7.00	1240	-0.006	-0.018	0.015
	FID	HRC-I-3	7.09	1240	-0.040	-0.081	0.013
	FID	HRC-I-4	7.04	1240	0.160	0.009	0.007
	GUIDE	970467856	8.12	2479	0.119	0.127	0.074
	GUIDE	970503184	7.76	2479	-0.033	-0.162	0.054
	GUIDE	970342184	6.70	2479	-0.067	0.039	0.055
	GUIDE	970375136	7.93	2478	-0.019	-0.004	0.066
0.0000.0000.0000.0000000.00000000.000.00							

2.4 Star Slots

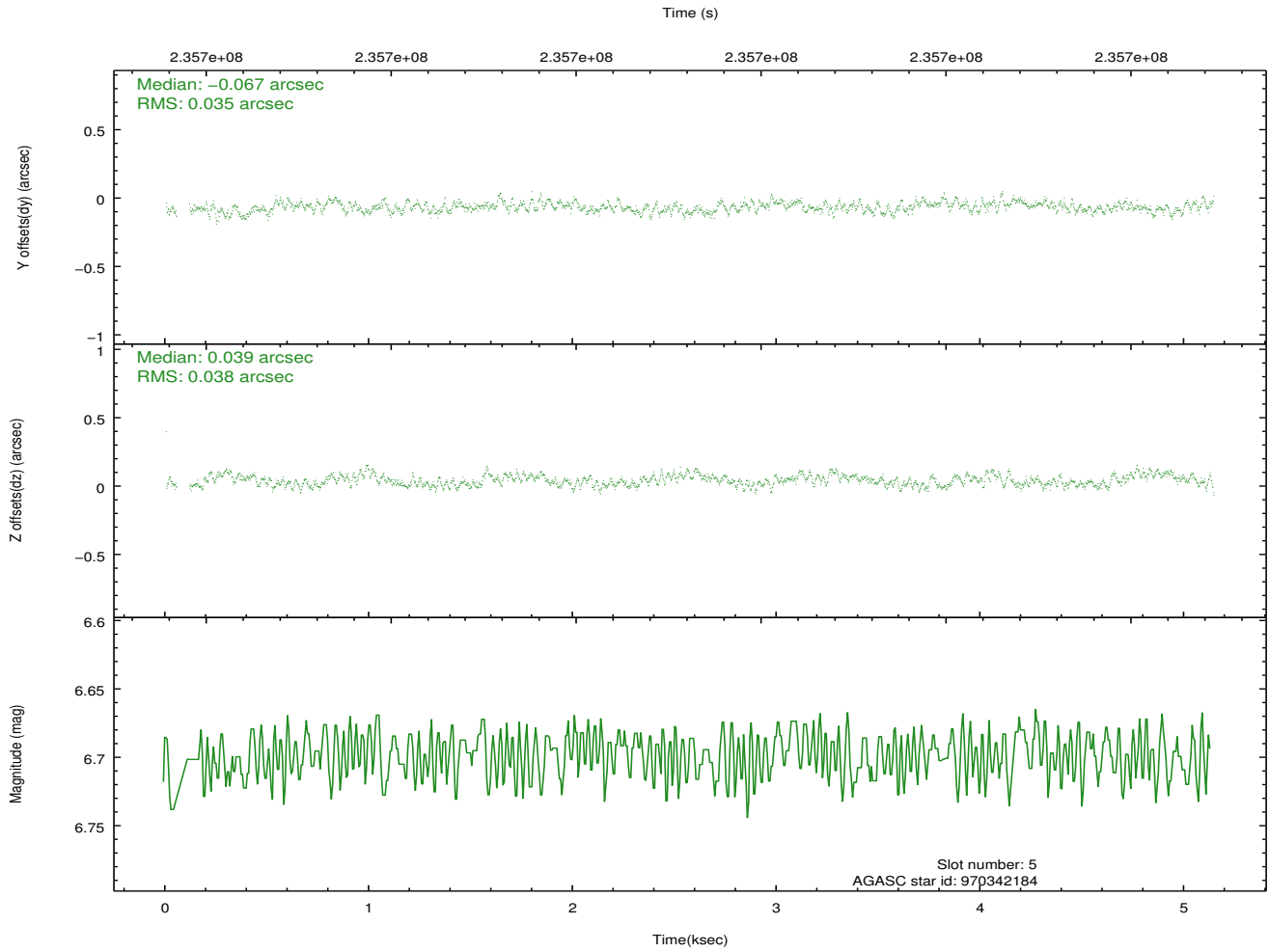
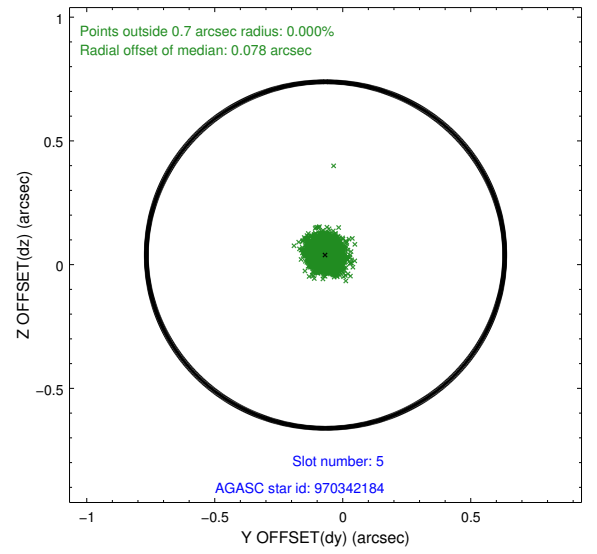
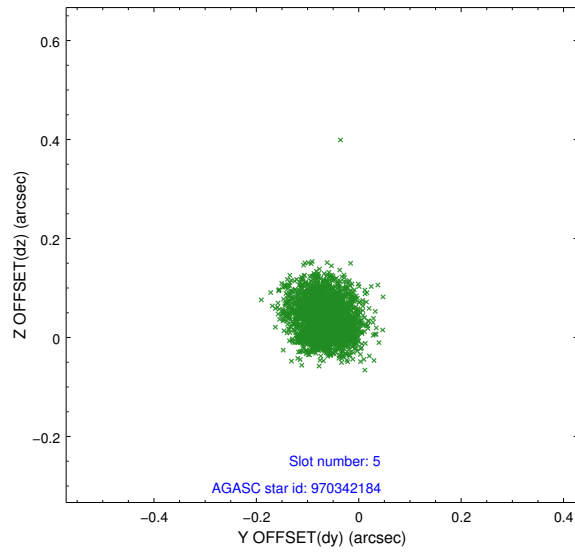
2.4.1 Slot 3



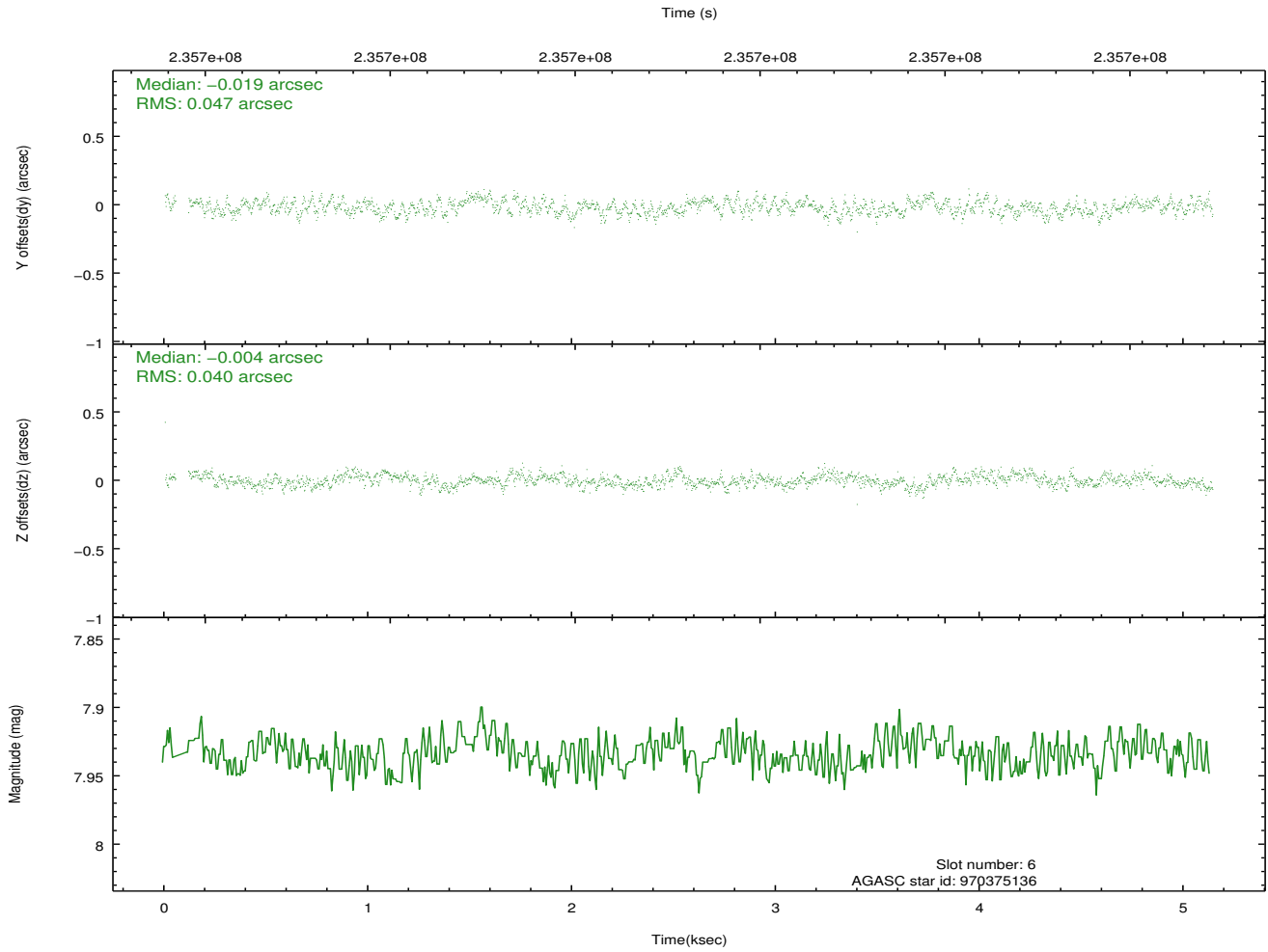
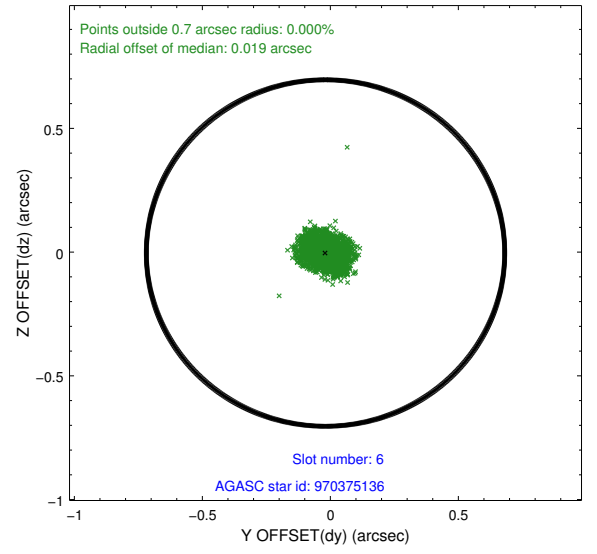
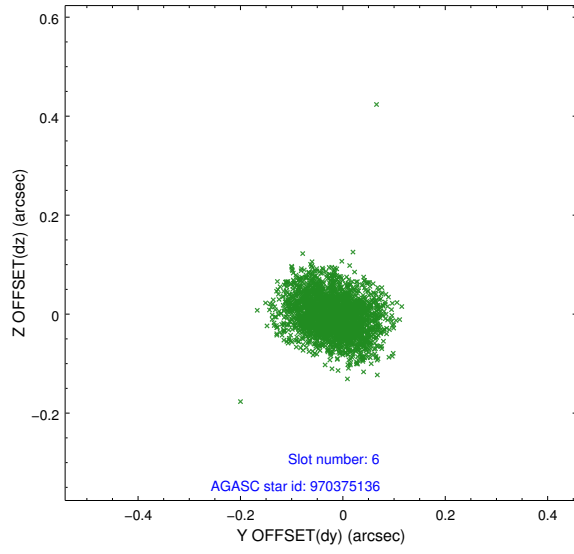
2.4.2 Slot 4



2.4.3 Slot 5

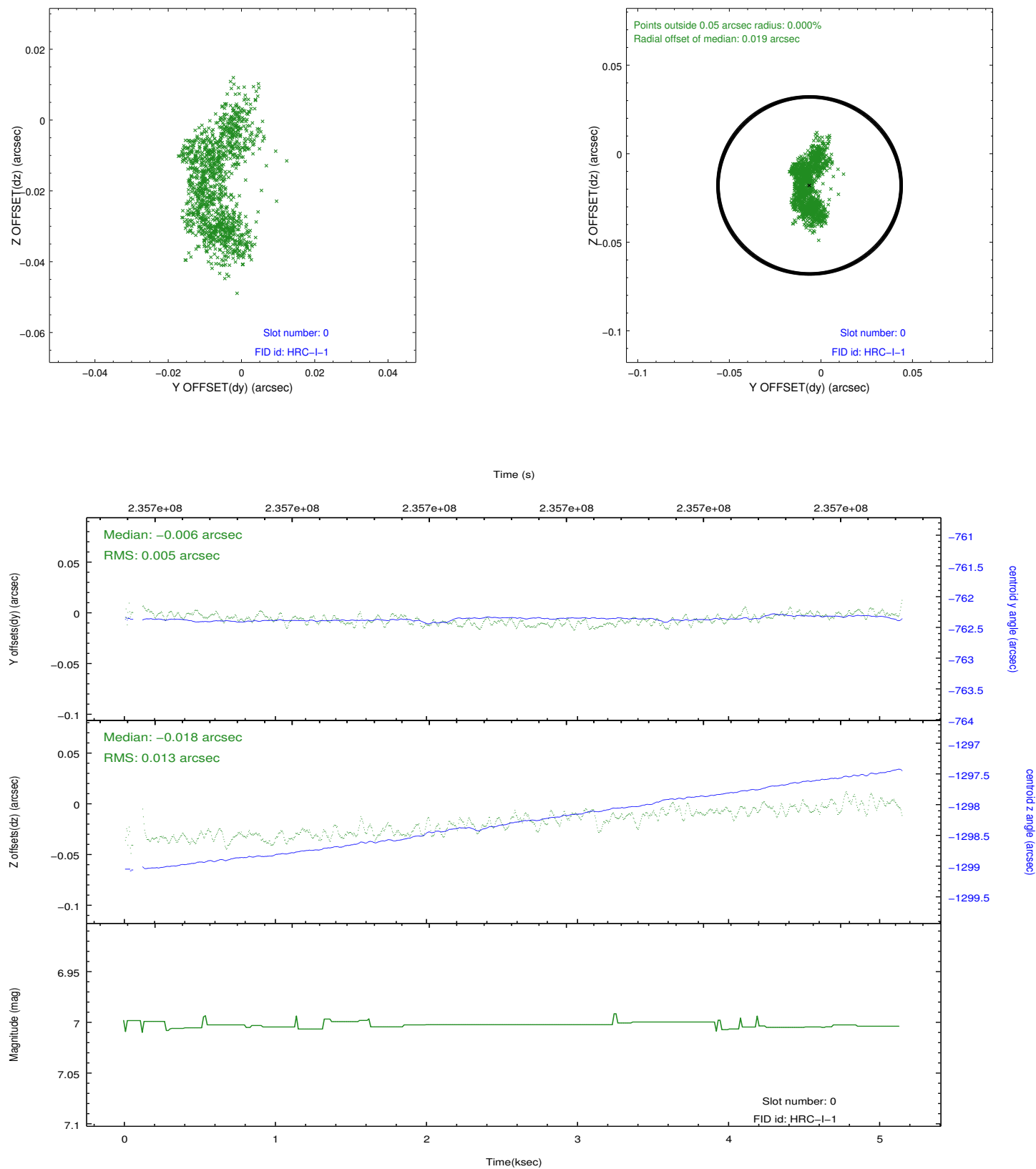


2.4.4 Slot 6

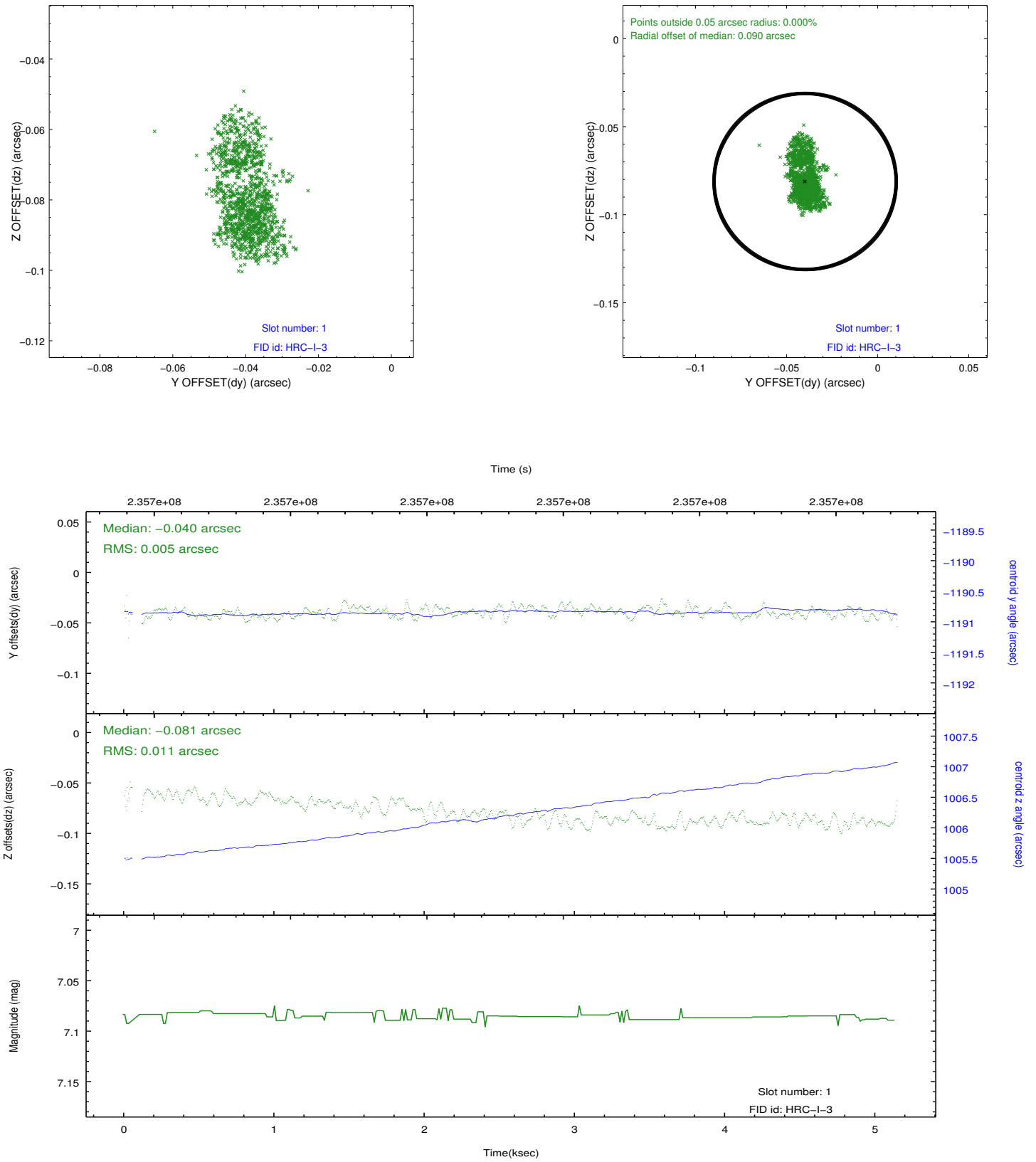


2.5 FID Slots

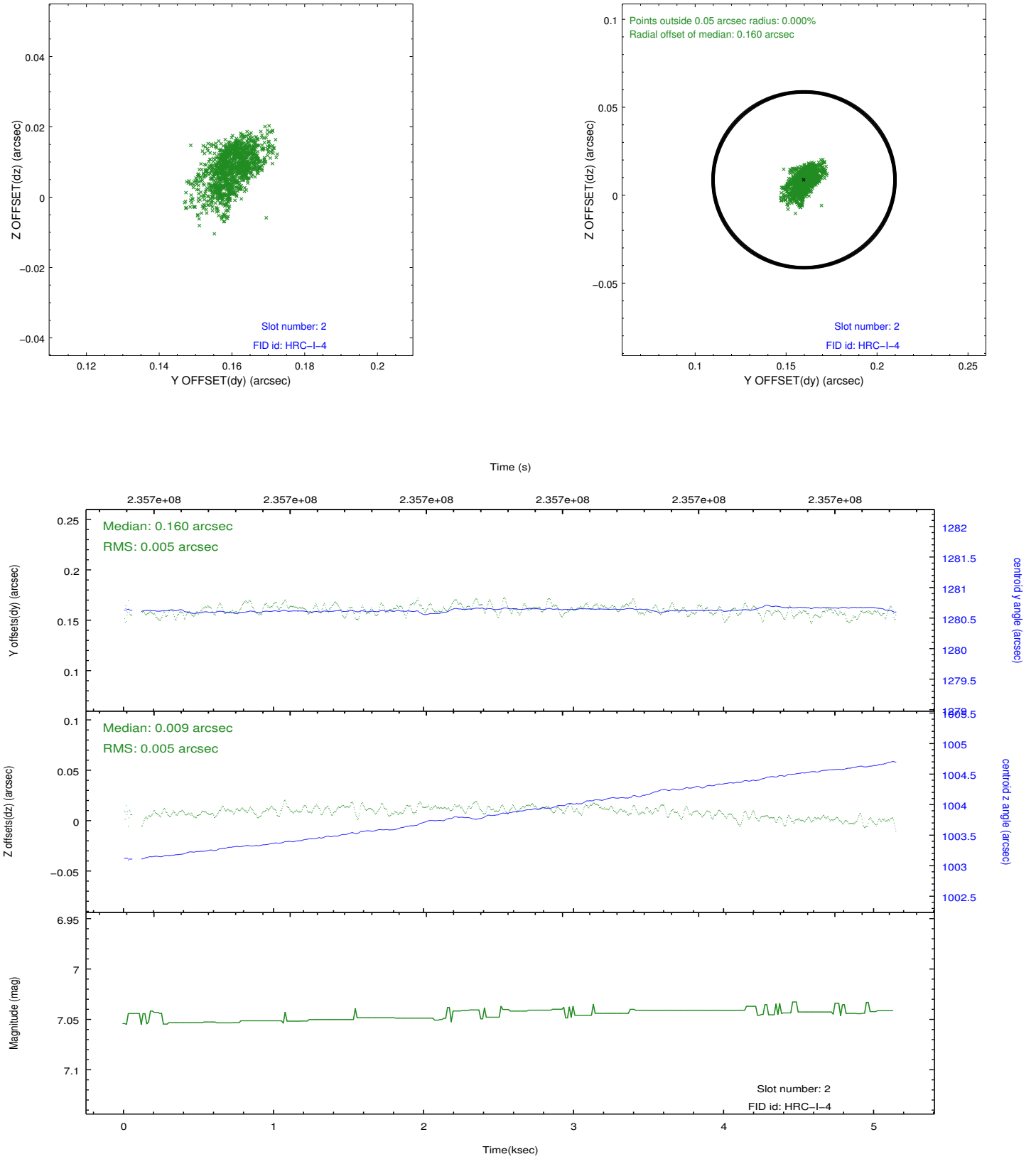
2.5.1 Slot 0



2.5.2 Slot 1



2.5.3 Slot 2



A Summary

A.1 Status

V&V Scientist	Jen Lauer
V&V Date (YYYY-MM-DD)	2013.01.17
V&V Edition	1
V&V Disposition and Status	OK
V&V Charge Time	4.767531

A.2 Comments