

V&V Reference Report

L2 ASCDS Version : 8.4.5

Observation 62888 - L2 Version 5
Chandra X-Ray Center

L2 Processing Date : Aug 26 2012

Contents

1	Front	2
2	OBI	3
2.1	OBI	3
2.1.1	Images	3
2.1.2	Bias	3
2.1.3	Parameters	4
2.1.4	Events	4
2.2	Compared Parameters	5
2.3	Star Slots	6
2.4	FID Slots	6
A	Summary	7
A.1	Status	7
A.2	Comments	7

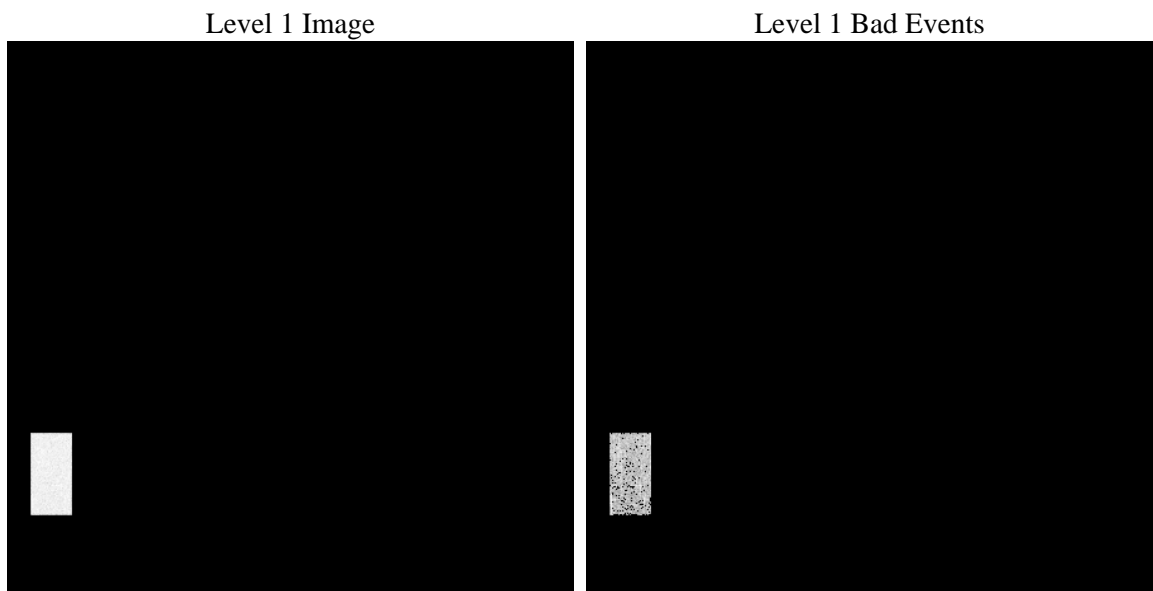
1 Front

seq_num	 	Sequence number
obs_id	62888	Observation id
title	ACIS-4 diagnostics; squeegee III, non-squeegee run, CAP 596	Propos
observer	CHANDRA engineering request/realtime commanding	Principal investig
object	 	Source name
dtcycle	0	
cycle	P	events from which exps? Prim/Second/Both
ra_targ	0.0	Observer's specified target RA [deg]
dec_targ	0.0	Observer's specified target Dec [deg]
ra_nom	260.00627499783	Nominal RA [deg]
dec_nom	-59.971285192845	Nominal Dec [deg]
roll_nom	51.511823675289	Nominal Roll [deg]
revision	5	Processing version of data
ontime	1323.2999988198	Sum of GTIs [s]
livetime	1307.0451105361	Livetime [s]
ontime4	1323.2999988198	Sum of GTIs [s]
l2events	47995	Number of level 2 events

2 OBI

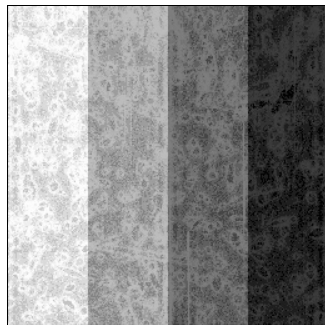
2.1 OBI

2.1.1 Images



2.1.2 Bias

Chip 4



2.1.3 Parameters

obi_num	0	Obi number	sched_exp_time	0.0	[s] Scheduled observation exposure time
ascdsver	8.4.5	Processing system revision	ontime	1323.2999988198	Sum of GTIs [s]
caldsver	4.5.1.1	 	ontime4	1323.2999988198	Sum of GTIs [s]
date	2012-08-26T21:40:19	Date and time of file creation	l1events	60687	Number of level 1 events
revision	5	Processing version of data			

2.1.4 Events

	ccd 4
level 1 events	60687
rejected events	7670
rejected %	12%

	ccd 4
grade 0 events	29758
	49%
grade 1 events	185
	0%
grade 2 events	9345
	15%
grade 3 events	3322
	5%
grade 4 events	3279
	5%
grade 5 events	470
	0%
grade 6 events	7313
	12%
grade 7 events	7015
	11%

2.2 Compared Parameters

Parameter	Planned	Actual	Parameter	Planned	Actual
Instrument	ACIS	ACIS	Obspar format version number	7	7
Detector	ACIS-4	ACIS-4	Obspar file type	PREDICTED	ACTUAL
Grating	NONE	NONE	Obspar update status	NONE	UPDATED
Data mode	FAINT	FAINT	On-chip summing requested	N	N
Observation mode	SECONDARY	SECONDARY	Subarray requested	NONE	NONE
[deg] Pointing RA	0	260.0062749978329	Alternating exposures requested	N	N
[deg] Pointing Dec	0	-59.97128519284502	[s] Primary exposure time	0.000000	3.3
[deg] Pointing Roll	0.0	51.51182367528892			
[mm] SIM focus pos	-0.684267	-0.6828225247311905			
[mm] SIM defocus	0	0.8505141146731063			
[mm] SIM translation stage pos	-190.132523	250.466033080201			
[mm] SIM translation stage offset	0	-0.01005468664627074			
[s] Observation start time (MET)	73608127.867	73608127.098842			
Observation start date	2000-05-01T22:42:08	2000-05-01T22:42:07			
[s] Observation end time (MET)	73610464.867	73610464.098928			
Observation end date	2000-05-01T23:21:05	2000-05-01T23:21:04			
Read mode	TIMED	TIMED			

2.3 Star Slots

2.4 FID Slots

A Summary

A.1 Status

V&V Scientist	Jen Lauer
V&V Date (YYYY-MM-DD)	2012.08.29
V&V Edition	1
V&V Disposition and Status	OK
V&V Charge Time	1.3232999988198

A.2 Comments

Used window 4 to send to telemetry only output from quadrants A and B. This obsid is an unintended second science run after 62889, which had some problems. 62888 was a test to make sure the CCD was ok, and it was. Image shows half a chip, which is quadrants A and B.