

V&V Reference Report

L2 ASCDS Version : 8.3.2.1

Observation 62868 - L2 Version 4

Chandra X-Ray Center

L2 Processing Date : Sep 28 2010

Contents

1	Front	2
2	OBI	3
2.1	OBI	3
2.1.1	Images	3
2.1.2	Bias	3
2.1.3	Parameters	4
2.1.4	Events	4
2.2	Compared Parameters	5
2.3	Star Slots	6
2.4	FID Slots	6
A	Summary	7
A.1	Status	7
A.2	Comments	7

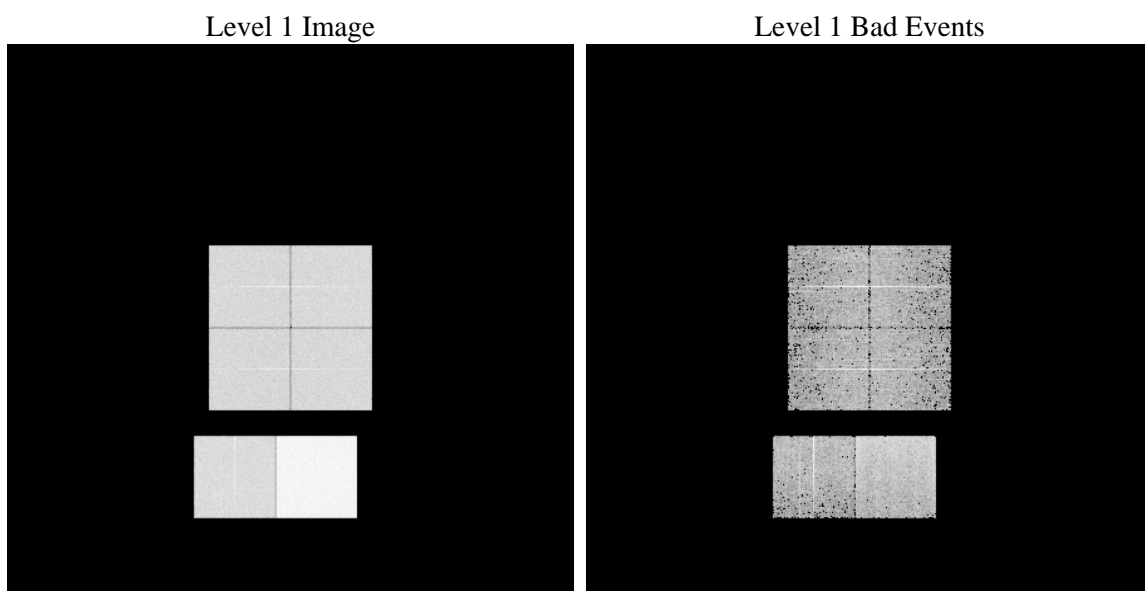
1 Front

seq_num	 	Sequence number
obs_id	62868	Observation id
title	ACIS-012367 diagnostics for the obsid formerly known as 1315	Propo
observer	CHANDRA engineering request/realtime commanding	Principal investig
object	 	Source name
dtcycle	0	
cycle	P	events from which exps? Prim/Second/Both
ra_targ	0.0	Observer's specified target RA
dec_targ	0.0	Observer's specified target Dec
ra_nom	95.256124880626	Nominal RA
dec_nom	80.785343075755	Nominal Dec
roll_nom	86.003348650316	Nominal Roll
revision	4	Processing version of data
ontime	3750.9459958002	Sum of GTIs [s]
livetime	3703.4492590529	Livetime [s]
ontime0	1422.8152560294	Sum of GTIs [s]
ontime1	1484.3950460702	Sum of GTIs [s]
ontime2	1374.1996858567	Sum of GTIs [s]
ontime3	1403.3691057786	Sum of GTIs [s]
ontime6	1566.2984152883	Sum of GTIs [s]
ontime7	3750.9459958002	Sum of GTIs [s]
l2events	1026619	Number of level 2 events

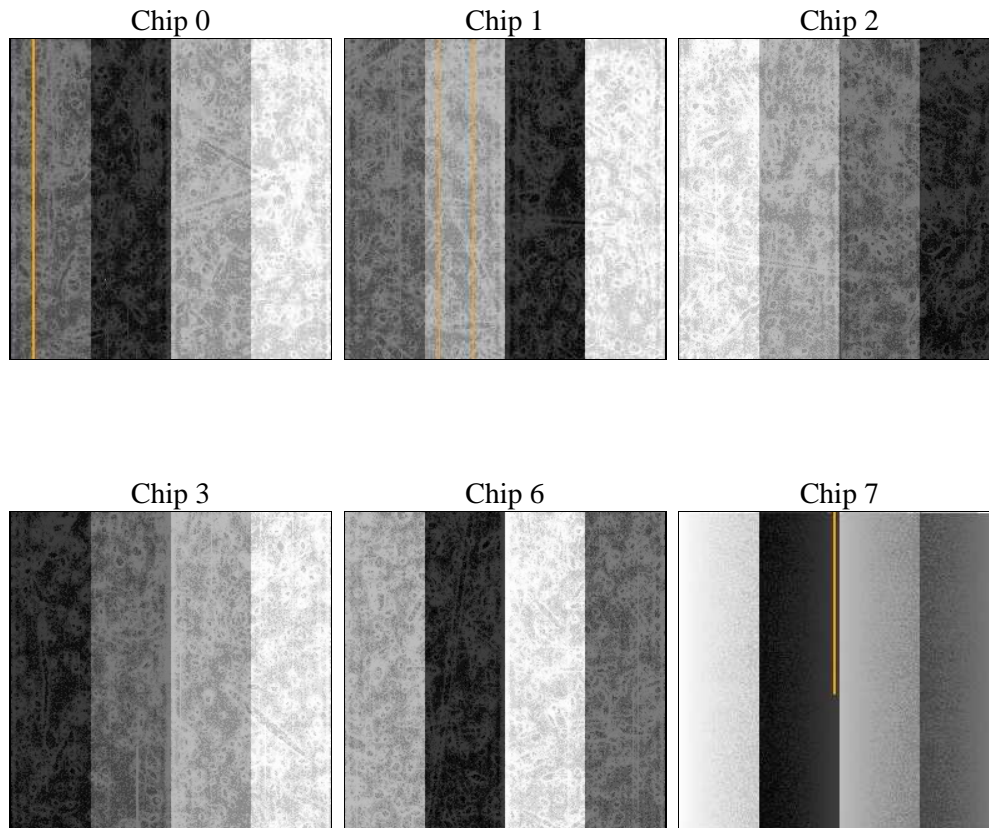
2 OBI

2.1 OBI

2.1.1 Images



2.1.2 Bias



2.1.3 Parameters

obi_num	0	Obi number	sched_exp_time	44792	Scheduled observation exposure time
ascdsver	8.3.2.1	ASCDS version number	ontime	3750.9459958002	Sum of GTIs [s]
caldsver	4.3.1	 	ontime0	1422.8152560294	Sum of GTIs [s]
date	2010-09-28T19:05:46	Date and time of file creation	ontime1	1484.3950460702	Sum of GTIs [s]
revision	4	Processing version of data	ontime2	1374.1996858567	Sum of GTIs [s]
			ontime3	1403.3691057786	Sum of GTIs [s]
			ontime6	1566.2984152883	Sum of GTIs [s]
			ontime7	3750.9459958002	Sum of GTIs [s]
			l1events	1189102	Number of level 1 events

2.1.4 Events

	ccd 0	ccd 1	ccd 2	ccd 3	ccd 6	ccd 7		ccd 0	ccd 1	ccd 2	ccd 3	ccd 6	ccd 7
level 1 events	150710	156979	146870	151104	171280	412159	grade 0 events	48862	51290	40960	43792	42127	69222
rejected events	21619	21673	22022	22255	25064	39128		32%	32%	27%	28%	24%	16%
rejected %	14%	13%	14%	14%	14%	9%	grade 1 events	213	237	193	193	178	172
								0%	0%	0%	0%	0%	0%
							grade 2 events	47429	49411	52988	53163	67137	104379
								31%	31%	36%	35%	39%	25%
							grade 3 events	5254	5575	4231	4689	4237	32774
								3%	3%	2%	3%	2%	7%
							grade 4 events	5184	5507	4214	4593	4336	29279
								3%	3%	2%	3%	2%	7%
							grade 5 events	1360	1357	1275	1403	1405	5734
								0%	0%	0%	0%	0%	1%
							grade 6 events	22362	23523	22455	22612	28683	137704
								14%	14%	15%	14%	16%	33%
							grade 7 events	20046	20079	20554	20659	23177	32895
								13%	12%	13%	13%	13%	7%

2.2 Compared Parameters

Parameter	Planned	Actual	Parameter	Planned	Actual
Instrument	ACIS	ACIS	Obspar format version number	6	6
Detector	ACIS-012367	ACIS-012367	Obspar file type	PREDICTED	ACTUAL
Grating	NONE	NONE	Obspar update status	OVERRIDE	OVERRIDE
Data mode	FAINT	FAINT	Number of optional ACIS chips dropped	0	0
Observation mode	SECONDARY	SECONDARY	On-chip summing requested	N	N
Pointing RA	0	95.2561248806259	Subarray requested	NONE	NONE
Pointing Dec	0	80.78534307575455	Alternating exposures requested	N	N
Pointing Roll	0.0	86.0033486503162	Primary exposure time	3.2	3.2
SIM focus pos (mm)	-0.6828225247311905	-0.6828225247311905			
SIM defocus (mm)	0.8505140384245529	0.8505140384245529			
SIM translation stage pos (mm)	250.466033080201	250.466033080201			
SIM translation stage offset (mm)	-0.0100572612062706	-0.0100572612062706			
Observation start time	54592236.148804	54592236.148804			
Observation start date	1999-09-24T20:29:33	1999-09-24T20:30:36			
Observation end time	54637028.650411	54637028.650411			
Observation end date	1999-09-25T08:56:05	1999-09-25T08:57:08			
Read mode	TIMED	TIMED			

2.3 Star Slots

2.4 FID Slots

A Summary

A.1 Status

V&V Scientist	Joy Nichols
V&V Date (YYYY-MM-DD)	2010.09.30
V&V Edition	2
V&V Disposition and Status	OK
V&V Charge Time	3.7509459958002

A.2 Comments

This obsid originally appeared in telemetry with number 1315. It is documented in the spacecraft load as obsid 1315. Because this obsid was previously used for a different instrument configuration, the telemetry file was edited to change the obsid to 62868. The focal plane temperature is approximately -110 C during this observation.