

V&V Reference Report

L2 ASCDS Version : 8.4.5

Observation 628 - L2 Version 4
Chandra X-Ray Center

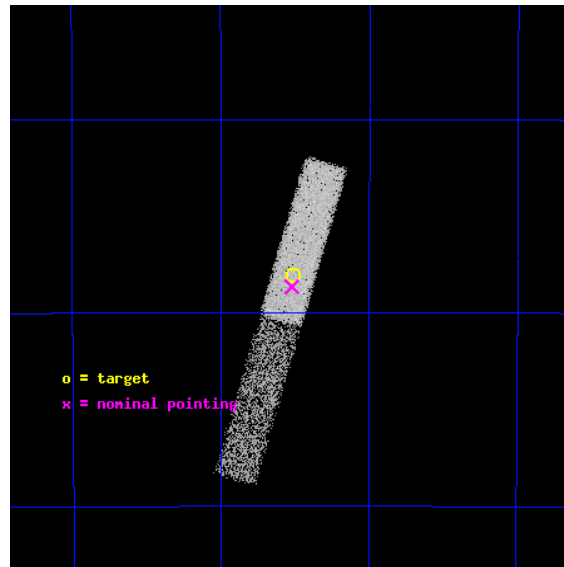
L2 Processing Date : Aug 30 2012

Contents

1	Front	2
2	OBI	3
2.1	OBI	3
2.1.1	Images	3
2.1.2	Bias	3
2.1.3	Parameters	4
2.1.4	Events	4
2.2	Compared Parameters	5
2.3	Aspect	6
2.4	Star Slots	9
2.4.1	Slot 3	9
2.4.2	Slot 4	10
2.4.3	Slot 5	11
2.4.4	Slot 6	12
2.4.5	Slot 7	13
2.5	FID Slots	14
2.5.1	Slot 0	14
2.5.2	Slot 1	15
2.5.3	Slot 2	16
A	Summary	17
A.1	Status	17
A.2	Comments	17

1 Front

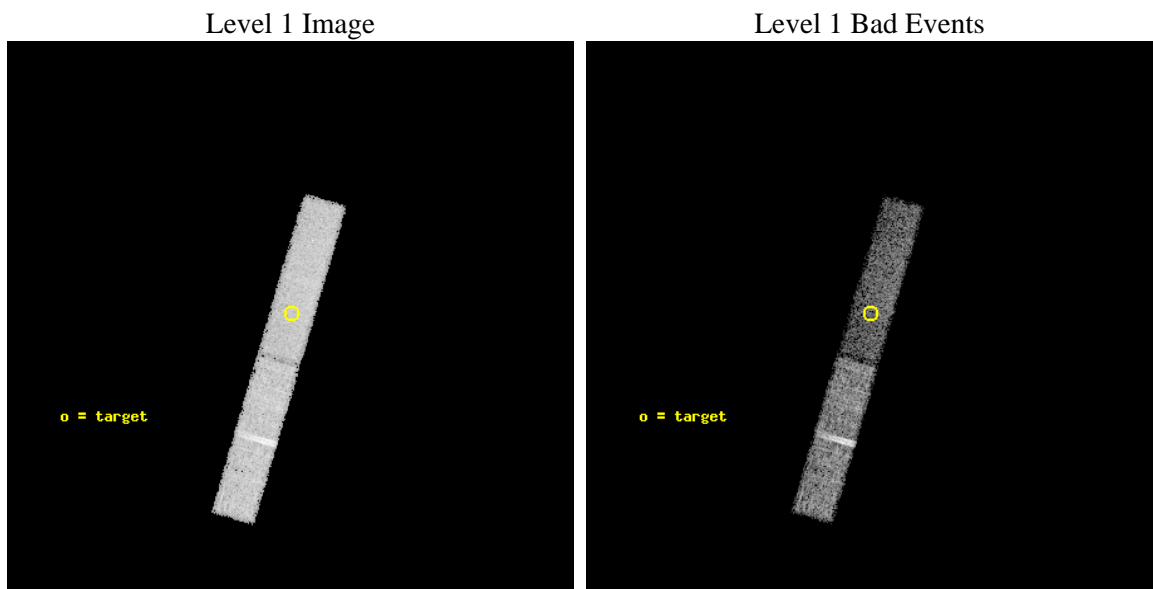
seq_num	200053	Sequence number
obs_id	628	Observation id
title	A COMPREHENSIVE INVESTIGATION OF X-RAY EMISSION FROM INTERMEDIATE MASS STARS	Proposal title
observer	Dr. Jeffrey Linsky	Principal investigator
object	HD 135379	Source name
dtcycle	0	
cycle	P	events from which exps? Prim/Second/Both
ra_targ	229.378542	Observer's specified target RA [deg]
dec_targ	-58.801194	Observer's specified target Dec [deg]
ra_nom	229.38051931869	Nominal RA [deg]
dec_nom	-58.81108068885	Nominal Dec [deg]
roll_nom	286.36962778112	Nominal Roll [deg]
revision	4	Processing version of data
ontime	19923.300131947	Sum of GTIs [s]
livetime	19054.418641877	Livetime [s]
ontime6	19923.300131947	Sum of GTIs [s]
ontime7	19923.300131947	Sum of GTIs [s]
l2events	21317	Number of level 2 events



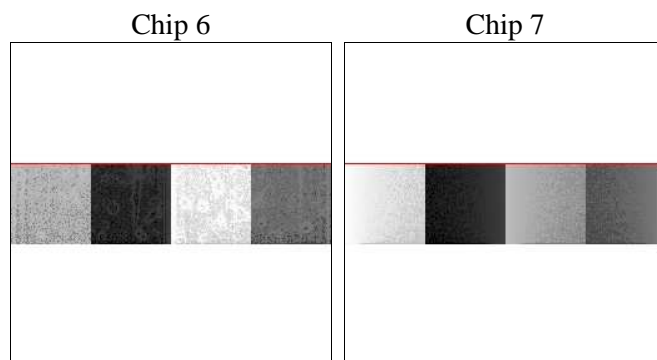
2 OBI

2.1 OBI

2.1.1 Images



2.1.2 Bias



2.1.3 Parameters

obi_num	0	Obi number	sched_exp_time	19785.000000	[s] Scheduled observation exposure time
ascdsver	8.4.5	Processing system revision	ontime	19923.300131947	Sum of GTIs [s]
caldsver	4.5.1.1	 	ontime6	19923.300131947	Sum of GTIs [s]
date	2012-08-30T04:17:29	Date and time of file creation	ontime7	19923.300131947	Sum of GTIs [s]
revision	4	Processing version of data	l1events	90401	Number of level 1 events

2.1.4 Events

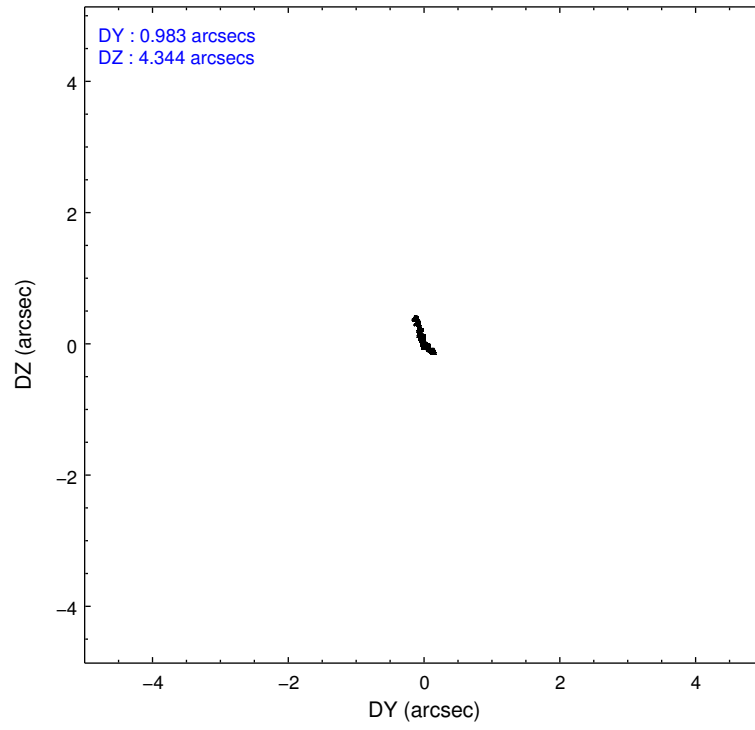
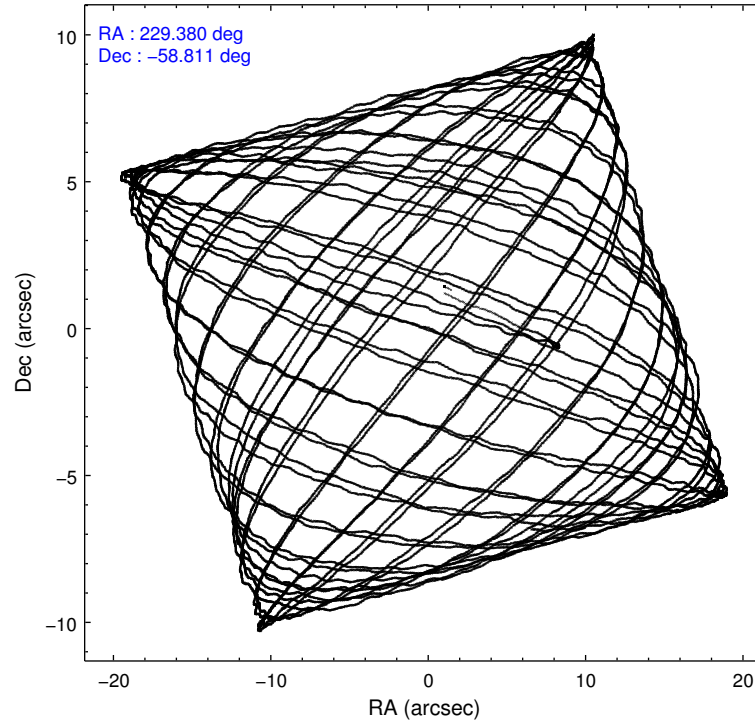
	ccd 6	ccd 7
level 1 events	47767	42634
rejected events	43047	24490
rejected %	90%	57%

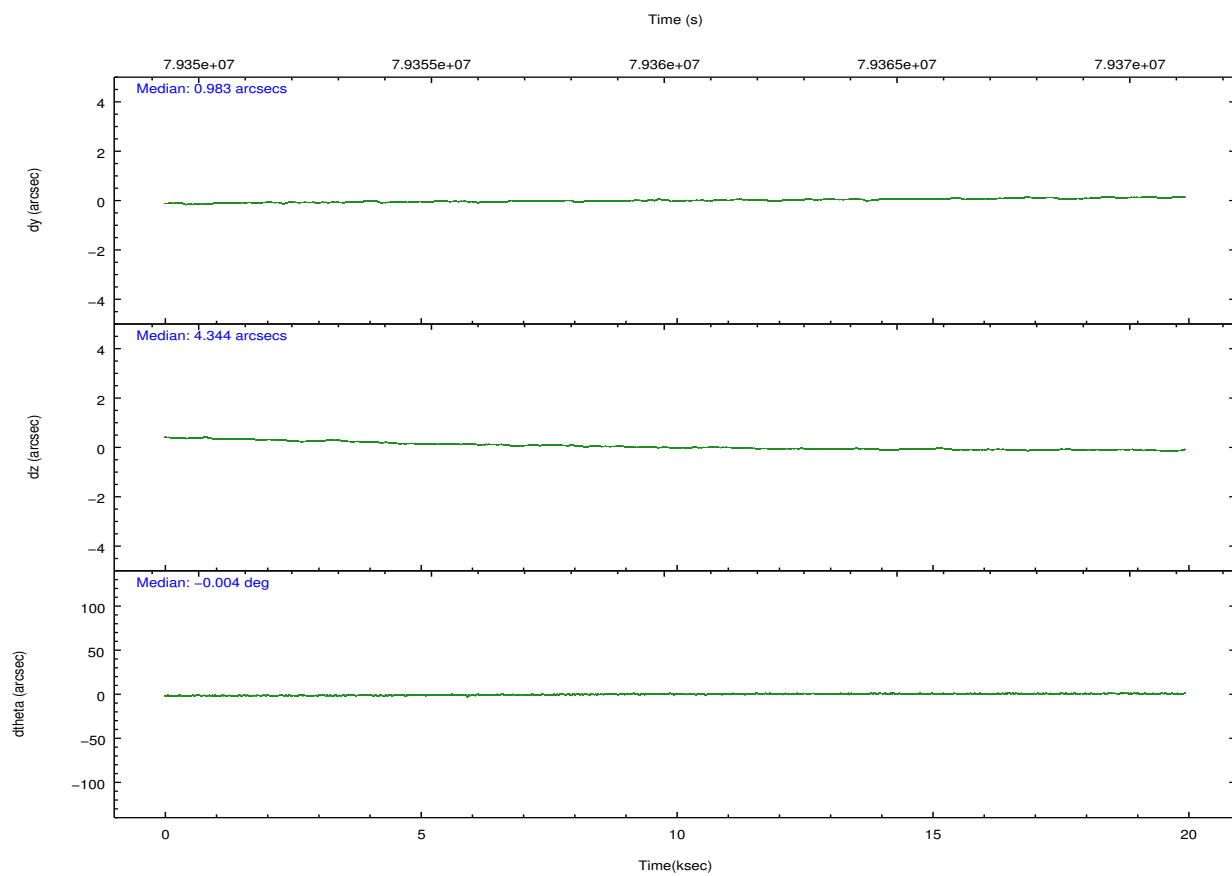
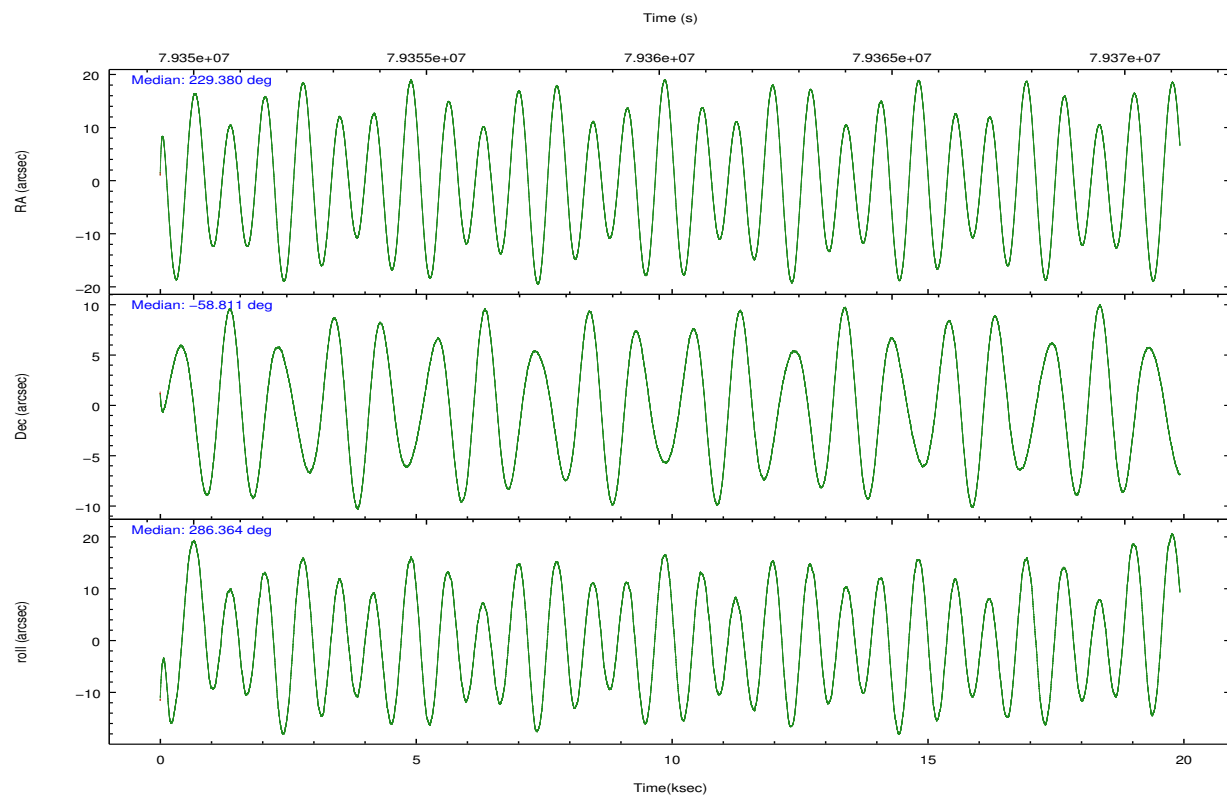
	ccd 6	ccd 7
grade 0 events	1844	1912
	3%	4%
grade 1 events	8	44
	0%	0%
grade 2 events	817	3972
	1%	9%
grade 3 events	777	2188
	1%	5%
grade 4 events	758	2167
	1%	5%
grade 5 events	1331	4119
	2%	9%
grade 6 events	805	8983
	1%	21%
grade 7 events	41427	19249
	86%	45%

2.2 Compared Parameters

Parameter	Planned	Actual	Parameter	Planned	Actual
Instrument	ACIS	ACIS	Obspar format version number	7	7
Detector	ACIS-67	ACIS-67	Obspar file type	PREDICTED	ACTUAL
Grating	NONE	NONE	Obspar update status	NONE	UPDATED
Data mode	VFAINT	VFAINT	Number of optional ACIS chips dropped	0	0
Observation mode	POINTING	POINTING	On-chip summing requested	N	N
[deg] Pointing RA	229.342054	229.3805193186851	Subarray requested	CUSTOM	1/4
[deg] Pointing Dec	-58.792285	-58.81108068885	Subarray start row	384	384
[deg] Pointing Roll	286.180101	286.3696277811233	Subarray row count	256	256
[mm] SIM focus pos	-0.684267	-0.6828225247311905	Alternating exposures requested	N	N
[mm] SIM defocus	0	0.001444936568705701	[s] Primary exposure time	0.000000	0.9
[mm] SIM translation stage pos	-190.132523	-190.1425803651734			
[mm] SIM translation stage offset	0	0.01005778216563158			
[s] Observation start time (MET)	79350409.184000	79349115.92260601			
Observation start date	2000-07-07T09:45:45	2000-07-07T09:25:15			
[s] Observation end time (MET)	79370194.184000	79370849.51090699			
Observation end date	2000-07-07T15:15:30	2000-07-07T15:27:29			
Read mode	TIMED	TIMED			

2.3 Aspect



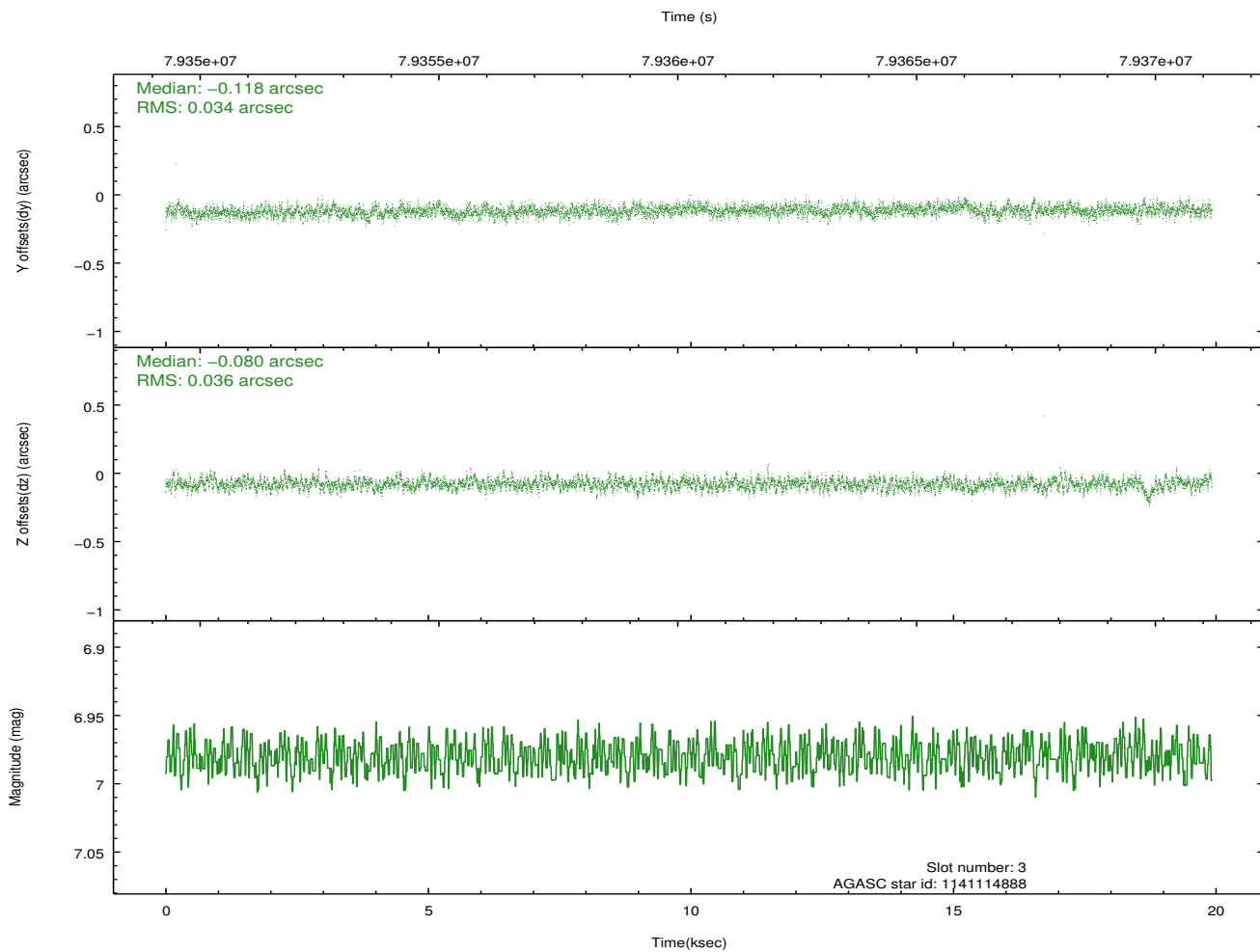
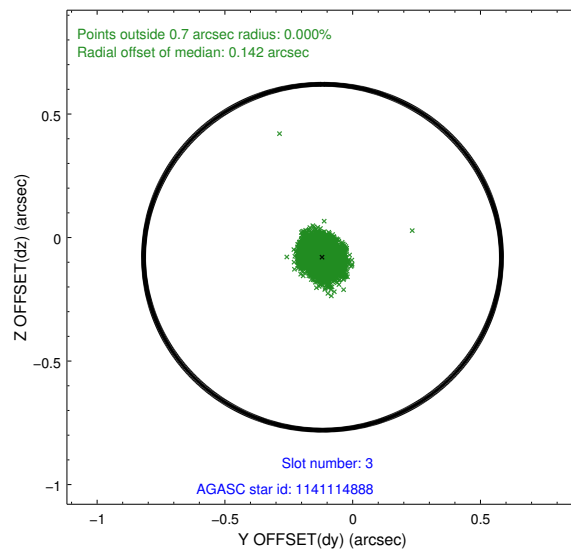
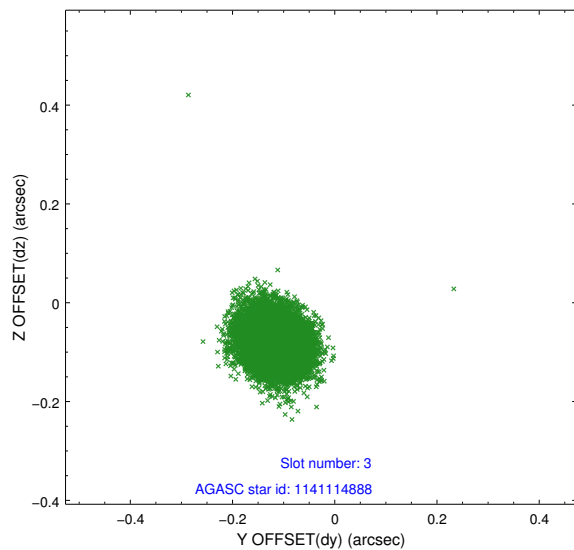


Slot Statistics

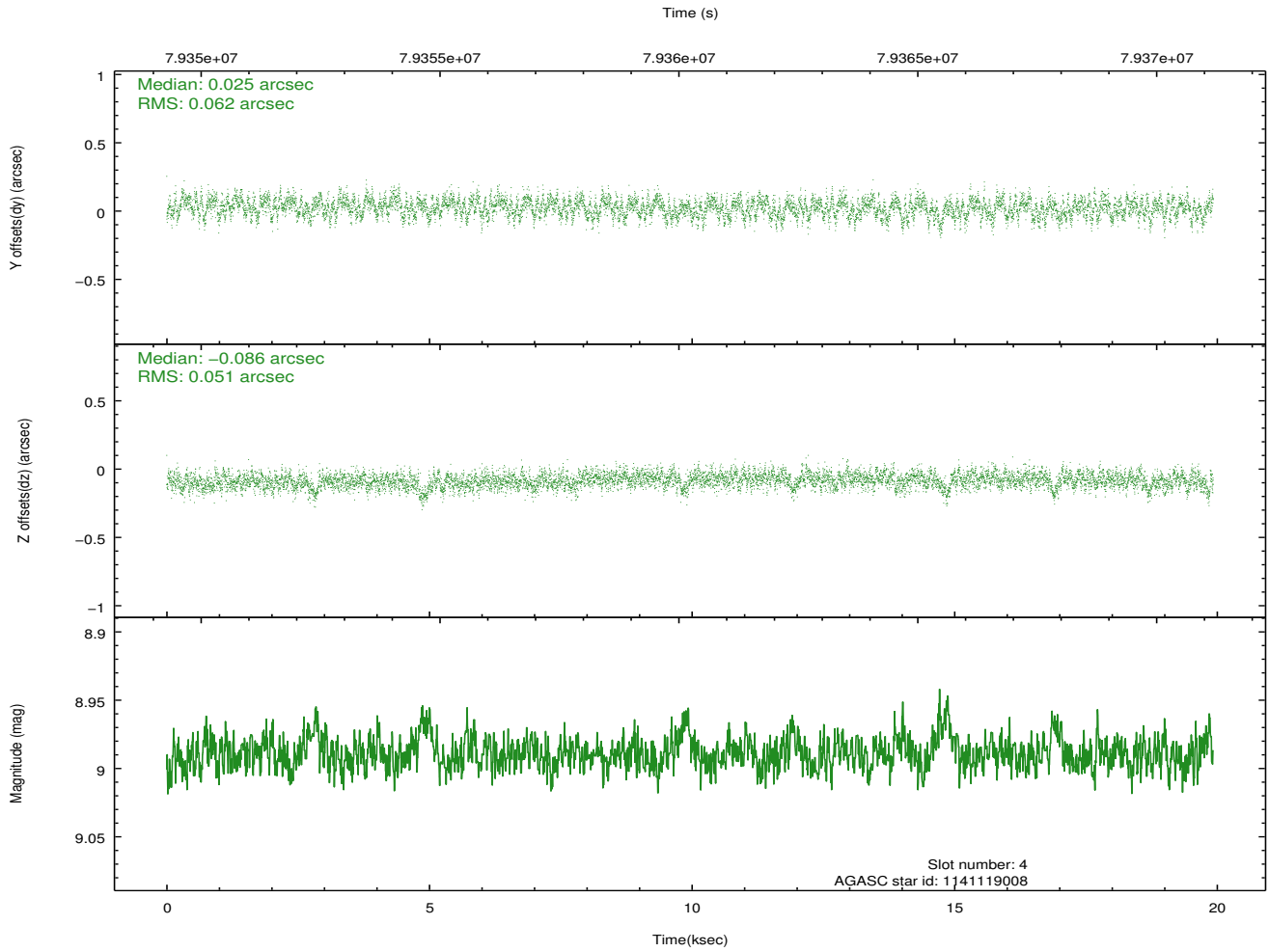
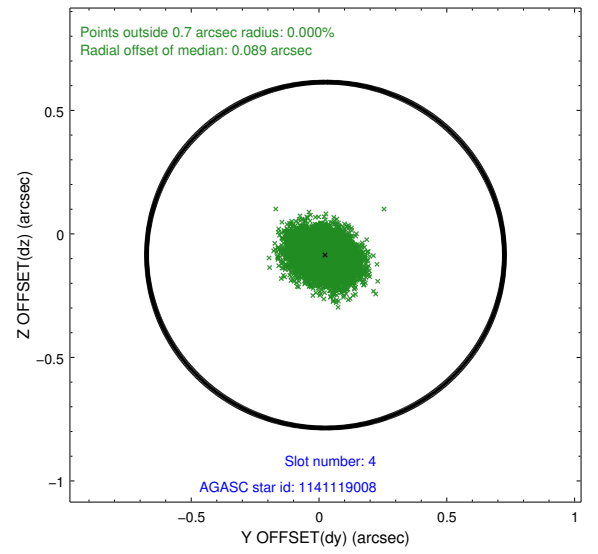
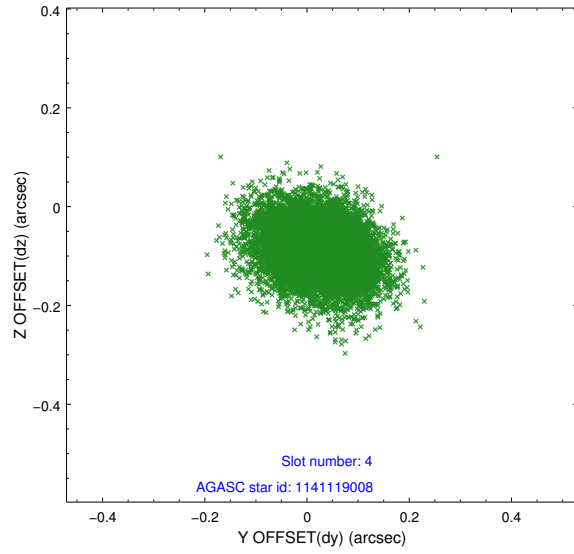
slot	status	id	mag	n_pts	med_dy	med_dz	dr1	dr2	ra	dec	mean_y	mean_z
0	FID	ACIS-S-2	7.11	4859	-0.022	-0.012	0.014	0.022	0.000000	0.000000	-753.61	-1725.45
1	FID	ACIS-S-4	7.21	4861	-0.006	0.013	0.028	0.040	0.000000	0.000000	2159.62	182.85
2	FID	ACIS-S-5	7.24	4861	-0.006	0.006	0.013	0.021	0.000000	0.000000	-1806.18	176.75
3	GUIDE	1141114888	6.98	9721	-0.118	-0.080	0.052	0.084	229.339260	-58.368001	-1468.20	421.35
4	GUIDE	1141119008	8.99	9716	0.025	-0.086	0.087	0.139	228.552751	-59.263048	1231.59	-1868.32
5	GUIDE	1141113304	8.85	9720	0.044	0.081	0.082	0.137	229.893168	-58.194542	-1770.80	1603.45
6	GUIDE	1141116760	9.44	9720	-0.001	0.026	0.084	0.141	229.350077	-58.445284	-1195.38	363.70
7	GUIDE	1141116384	9.43	9711	0.047	0.058	0.096	0.165	229.578291	-59.437206	2351.29	-230.55

2.4 Star Slots

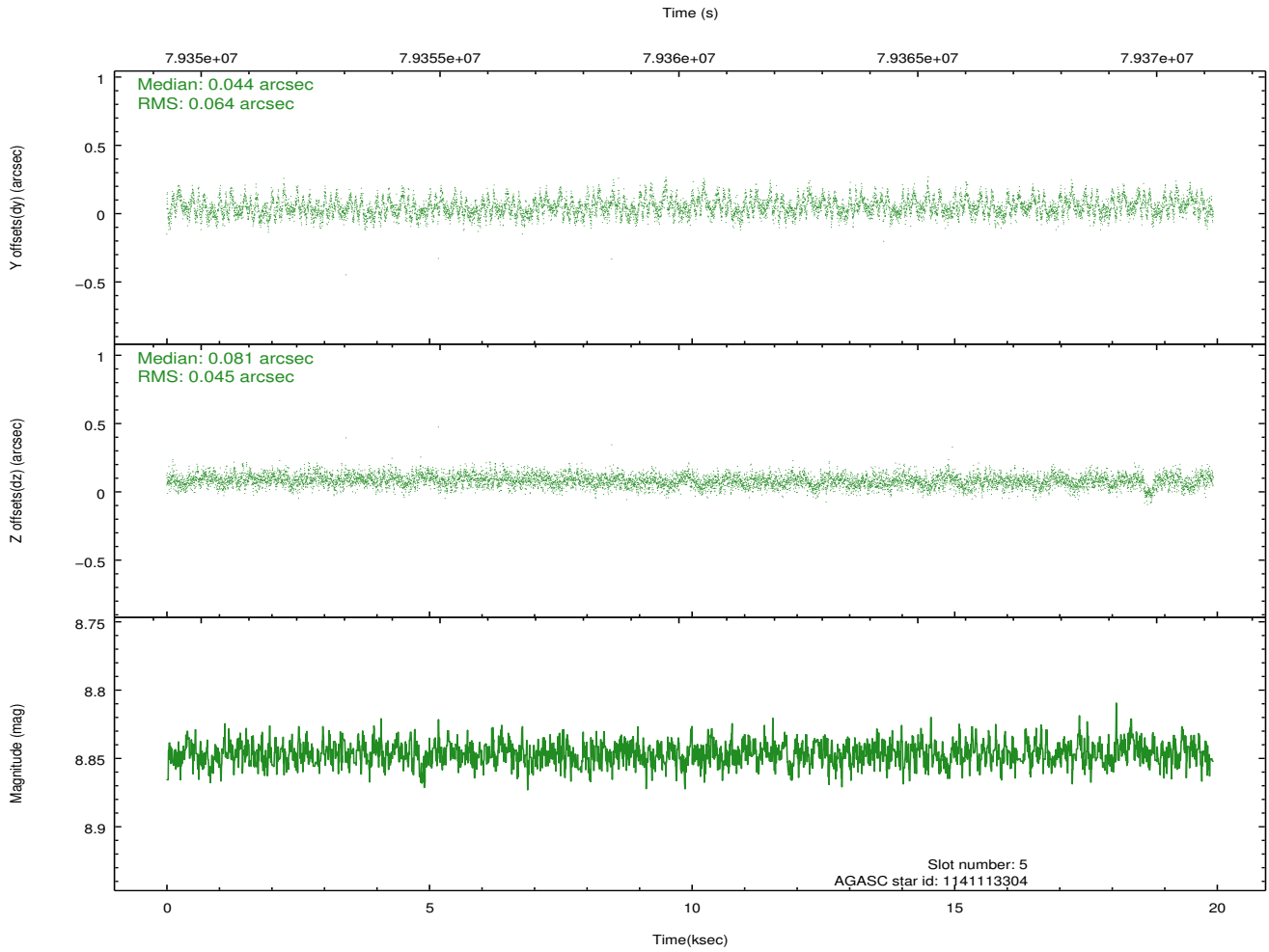
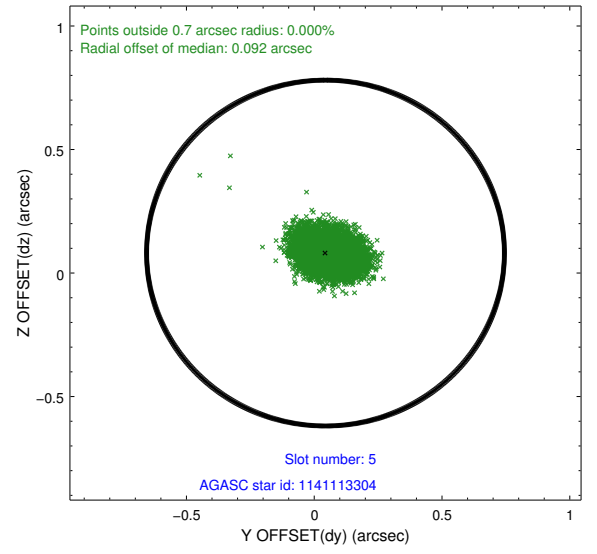
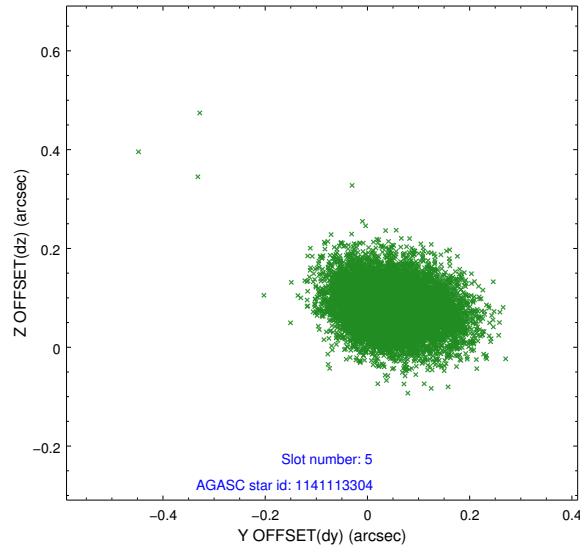
2.4.1 Slot 3



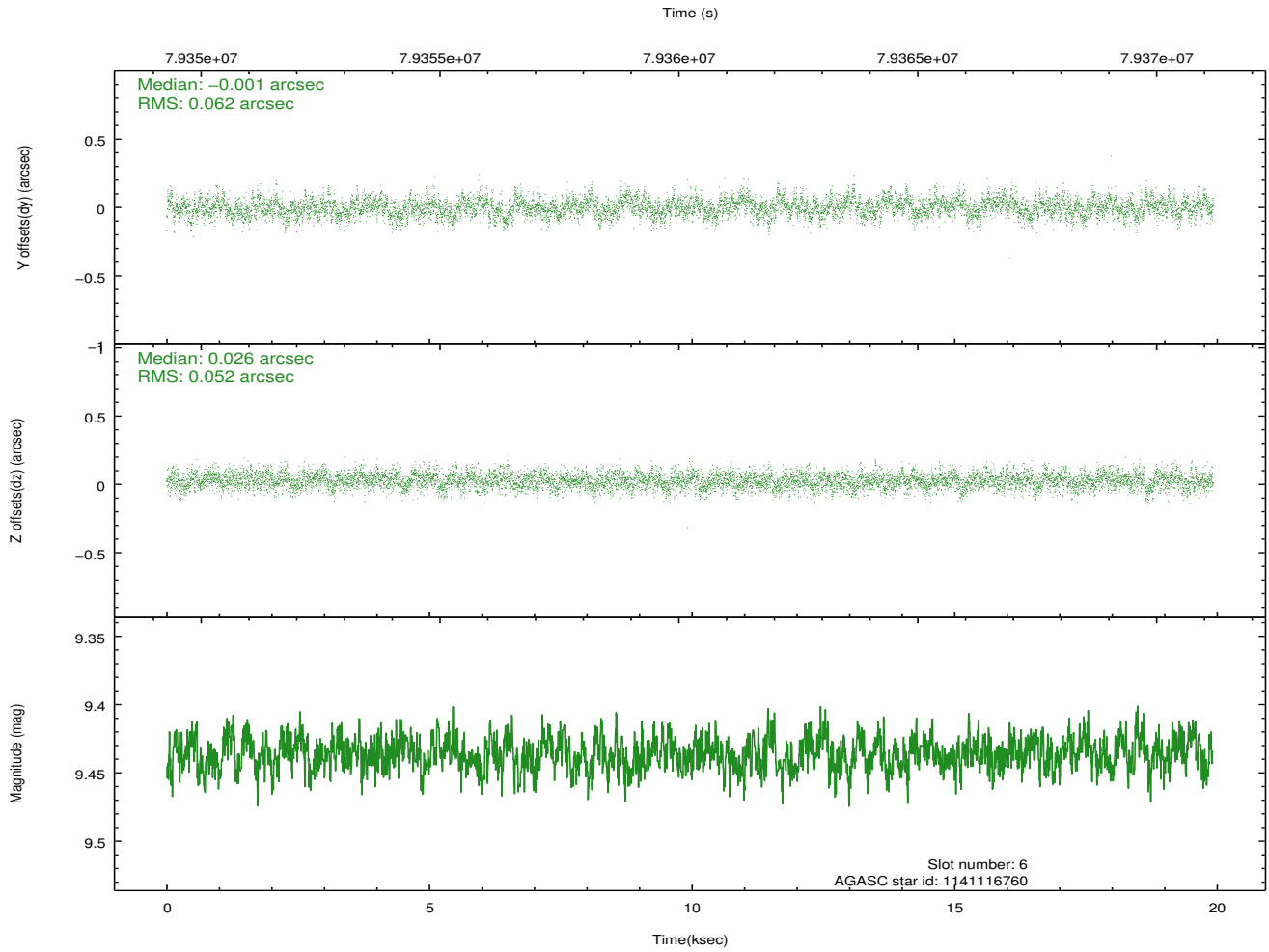
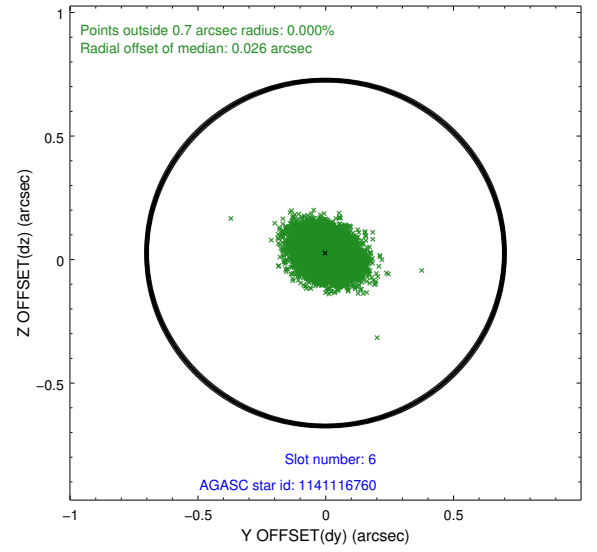
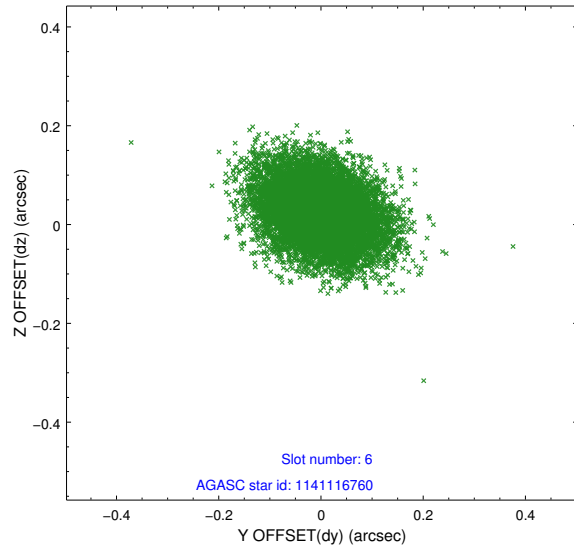
2.4.2 Slot 4



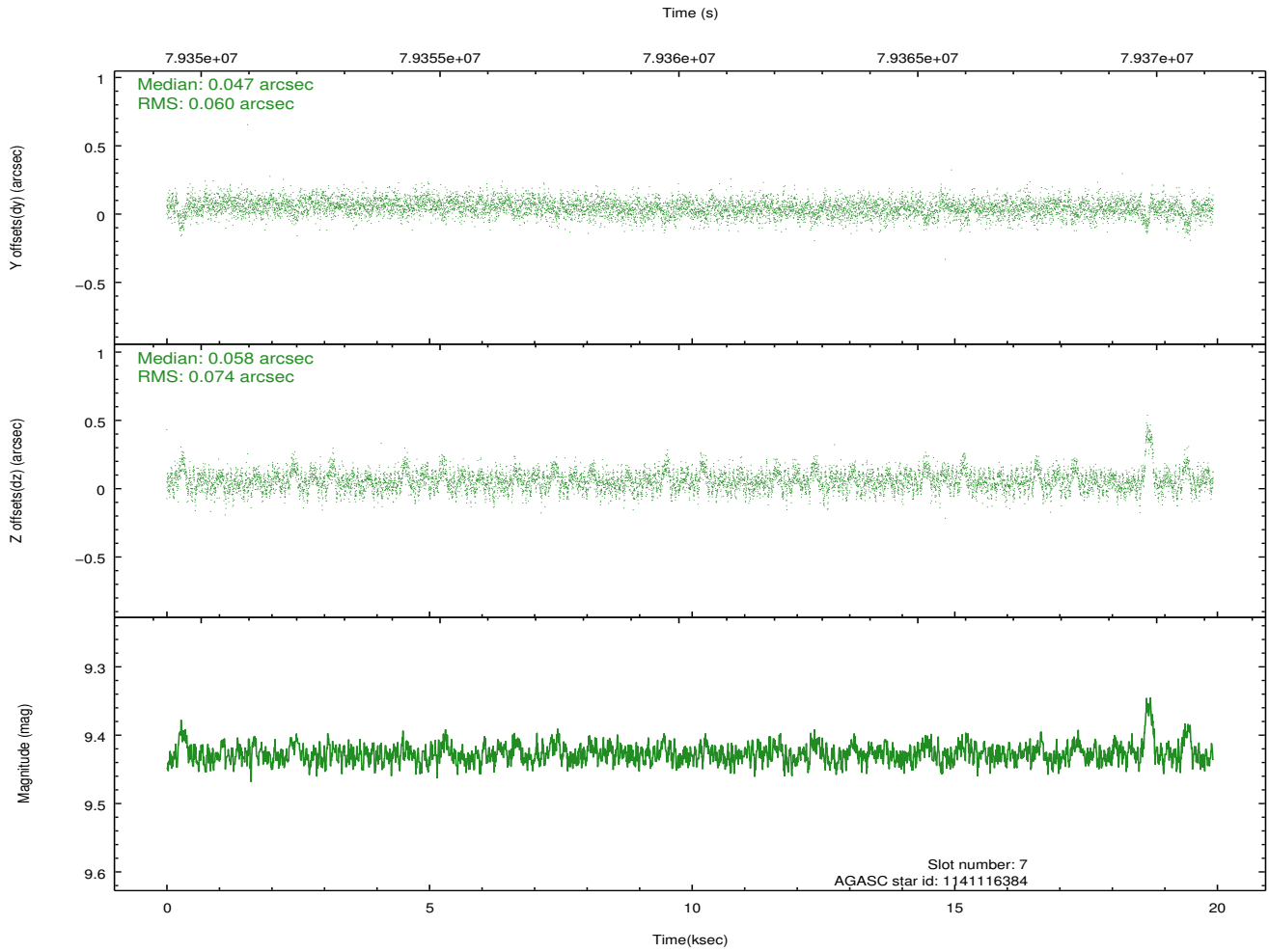
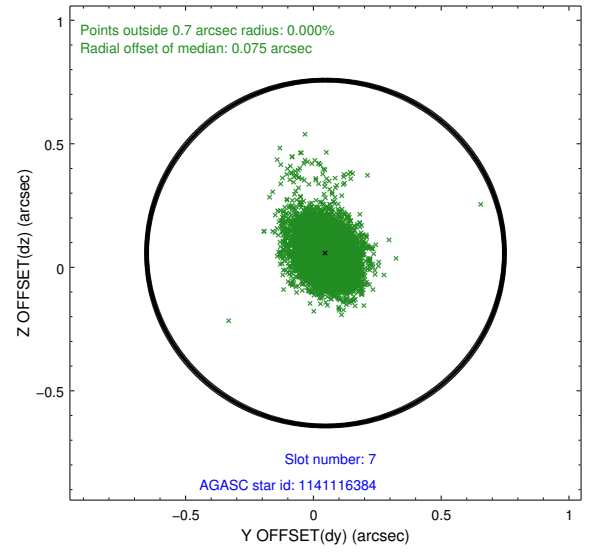
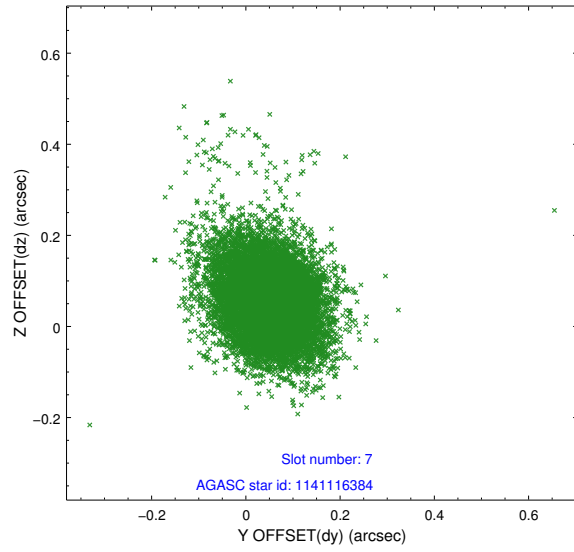
2.4.3 Slot 5



2.4.4 Slot 6

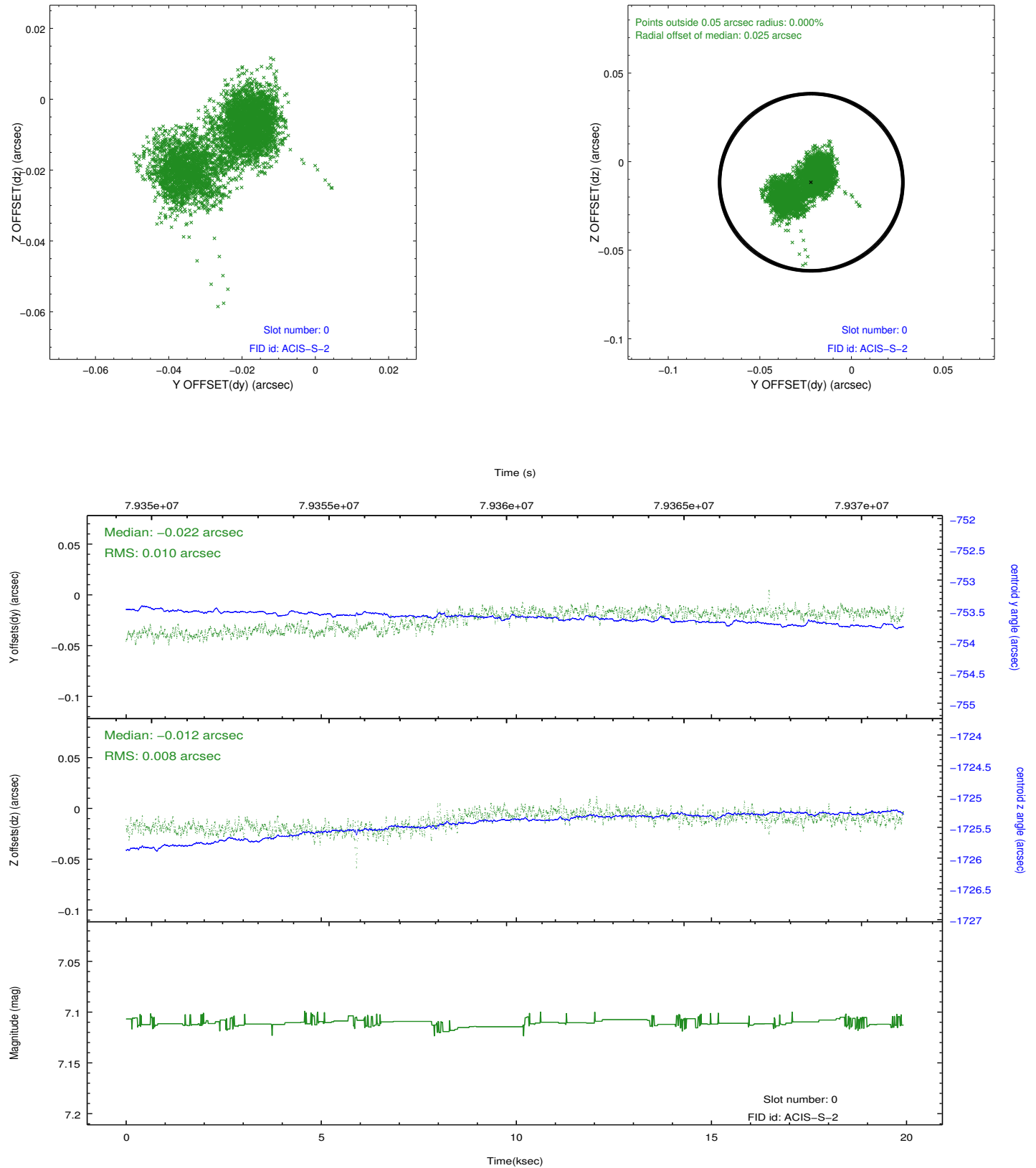


2.4.5 Slot 7

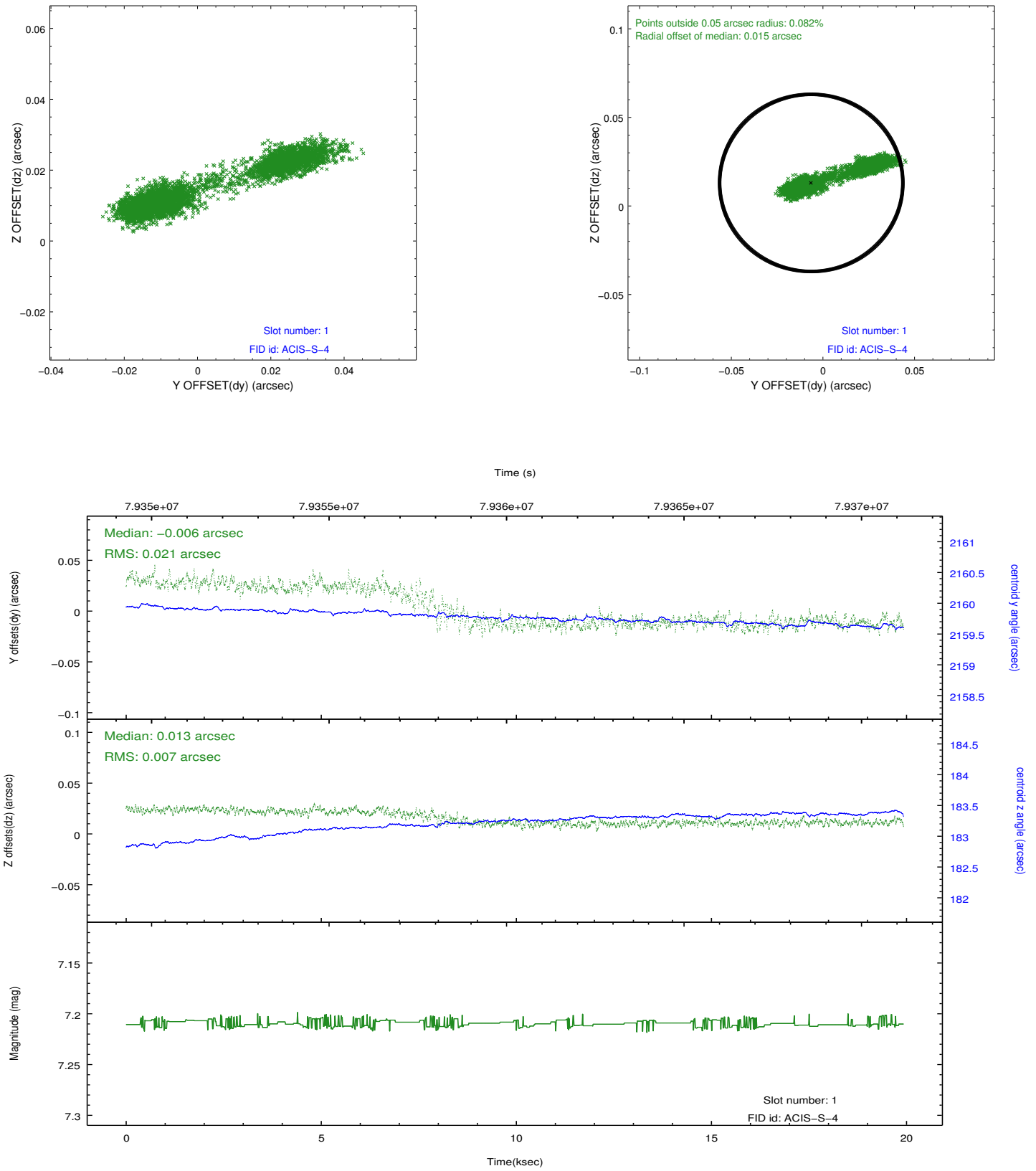


2.5 FID Slots

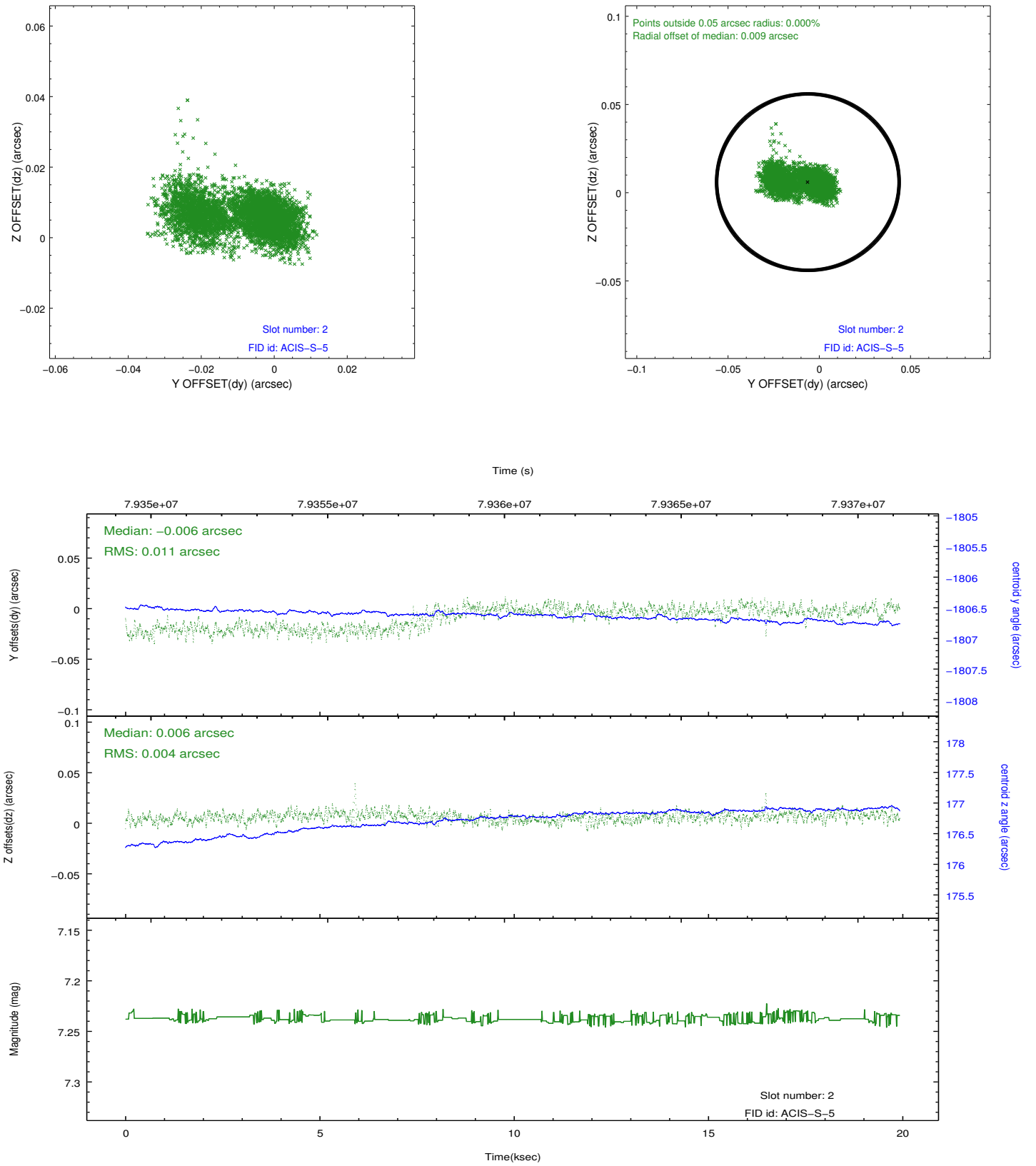
2.5.1 Slot 0



2.5.2 Slot 1



2.5.3 Slot 2



A Summary

A.1 Status

V&V Scientist	Jen Lauer
V&V Date (YYYY-MM-DD)	2012.09.04
V&V Edition	1
V&V Disposition and Status	OK
V&V Charge Time	19.925

A.2 Comments