

V&V Reference Report

L2 ASCDS Version : 8.4.5

Observation 61938 - L2 Version 3
Chandra X-Ray Center

L2 Processing Date : Sep 1 2012

Contents

1	Front	2
2	OBI	3
2.1	OBI	3
2.1.1	Images	3
2.1.2	Bias	3
2.1.3	Parameters	4
2.1.4	Events	4
2.2	Compared Parameters	5
2.3	Star Slots	6
2.4	FID Slots	6
A	Summary	7
A.1	Status	7
A.2	Comments	7

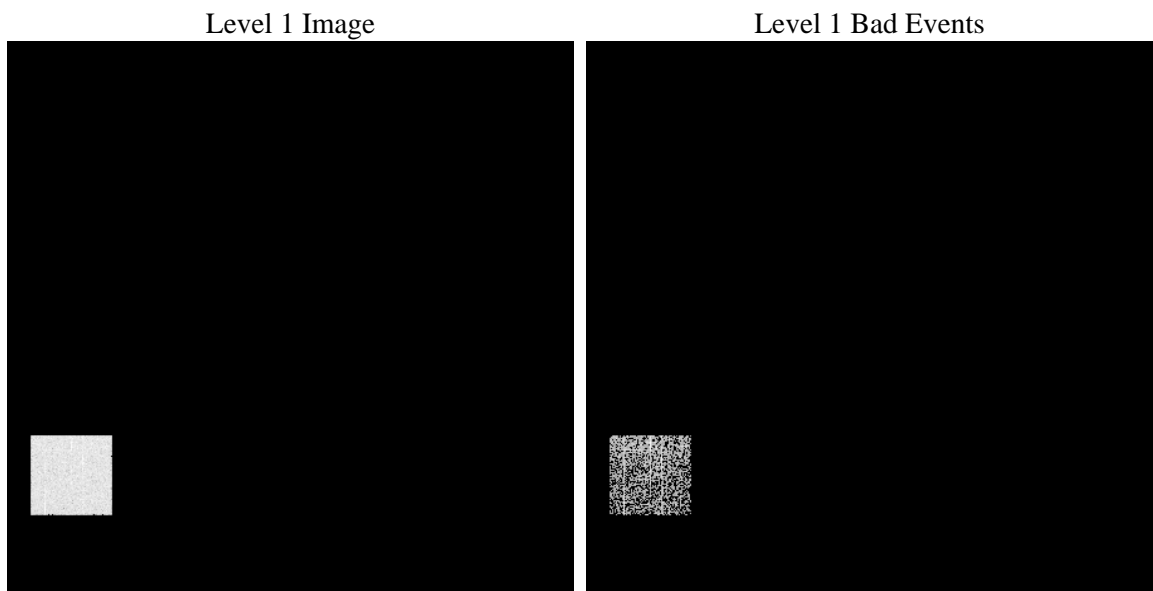
1 Front

seq_num	 	Sequence number
obs_id	61938	Observation id
title	ACIS-4 diagnostics	Proposal title
observer	CHANDRA engineering request/realtime commanding	Principal investig
object	 	Source name
dtcycle	0	
cycle	P	events from which exps? Prim/Second/Both
ra_targ	0.0	Observer's specified target RA [deg]
dec_targ	0.0	Observer's specified target Dec [deg]
ra_nom	76.942123528985	Nominal RA [deg]
dec_nom	-3.0566134859561	Nominal Dec [deg]
roll_nom	95.773532201354	Nominal Roll [deg]
revision	3	Processing version of data
ontime	590.06758379936	Sum of GTIs [s]
livetime	582.8194294405	Livetime [s]
ontime4	590.06758379936	Sum of GTIs [s]
l2events	37613	Number of level 2 events

2 OBI

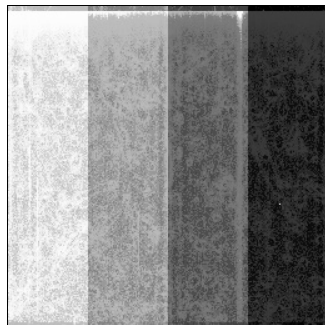
2.1 OBI

2.1.1 Images



2.1.2 Bias

Chip 4



2.1.3 Parameters

obi_num	0	Obi number	sched_exp_time	0.0	[s] Scheduled observation exposure time
ascdsver	8.4.5	Processing system revision	ontime	590.06758379936	Sum of GTIs [s]
caldsver	4.5.1.1	 	ontime4	590.06758379936	Sum of GTIs [s]
date	2012-09-01T17:33:05	Date and time of file creation	l1events	48515	Number of level 1 events
revision	3	Processing version of data			

2.1.4 Events

	ccd 4
level 1 events	48515
rejected events	5625
rejected %	11%

	ccd 4
grade 0 events	24048
	49%
grade 1 events	135
	0%
grade 2 events	7627
	15%
grade 3 events	2557
	5%
grade 4 events	2698
	5%
grade 5 events	366
	0%
grade 6 events	5960
	12%
grade 7 events	5124
	10%

2.2 Compared Parameters

Parameter	Planned	Actual	Parameter	Planned	Actual
Instrument	ACIS	ACIS	Obspar format version number	7	7
Detector	ACIS-4	ACIS-4	Obspar file type	PREDICTED	ACTUAL
Grating	NONE	NONE	Obspar update status	NONE	UPDATED
Data mode	FAINT	FAINT	On-chip summing requested	N	N
Observation mode	SECONDARY	SECONDARY	Subarray requested	NONE	NONE
[deg] Pointing RA	0	76.94212352898501	Alternating exposures requested	N	N
[deg] Pointing Dec	0	-3.056613485956147	[s] Primary exposure time	0.000000	3.3
[deg] Pointing Roll	0.0	95.77353220135407			
[mm] SIM focus pos	-0.684267	-0.7809083437167272			
[mm] SIM defocus	0	0.7524282956875696			
[mm] SIM translation stage pos	-190.132523	250.466033080201			
[mm] SIM translation stage offset	0	-0.01005468664627074			
[s] Observation start time (MET)	84747192.78	84747192.01138701			
Observation start date	2000-09-07T20:53:13	2000-09-07T20:53:12			
[s] Observation end time (MET)	84748884.03	84748883.26145101			
Observation end date	2000-09-07T21:21:24	2000-09-07T21:21:23			
Read mode	TIMED	TIMED			

2.3 Star Slots

2.4 FID Slots

A Summary

A.1 Status

V&V Scientist	Jen Lauer
V&V Date (YYYY-MM-DD)	2012.09.10
V&V Edition	1
V&V Disposition and Status	OK
V&V Charge Time	0.59006758379936

A.2 Comments

Squeegee mode diagnostic observation; bias map is non-standard.