

# V&V Reference Report

## L2 ASCDS Version : 7.6.10

Observation 61828 - L2 Version 001  
Chandra X-Ray Center

L2 Processing Date : Jun 20 2007

## Contents

<b>1</b>	<b>Front</b>	<b>2</b>
<b>2</b>	<b>OBI</b>	<b>3</b>
2.1	OBI . . . . .	3
2.1.1	Images . . . . .	3
2.1.2	Bias . . . . .	3
2.1.3	Parameters . . . . .	4
2.1.4	Events . . . . .	4
2.2	Compared Parameters . . . . .	5
2.3	Star Slots . . . . .	6
2.4	FID Slots . . . . .	6
<b>A</b>	<b>Summary</b>	<b>7</b>
A.1	Status . . . . .	7
A.2	Comments . . . . .	7

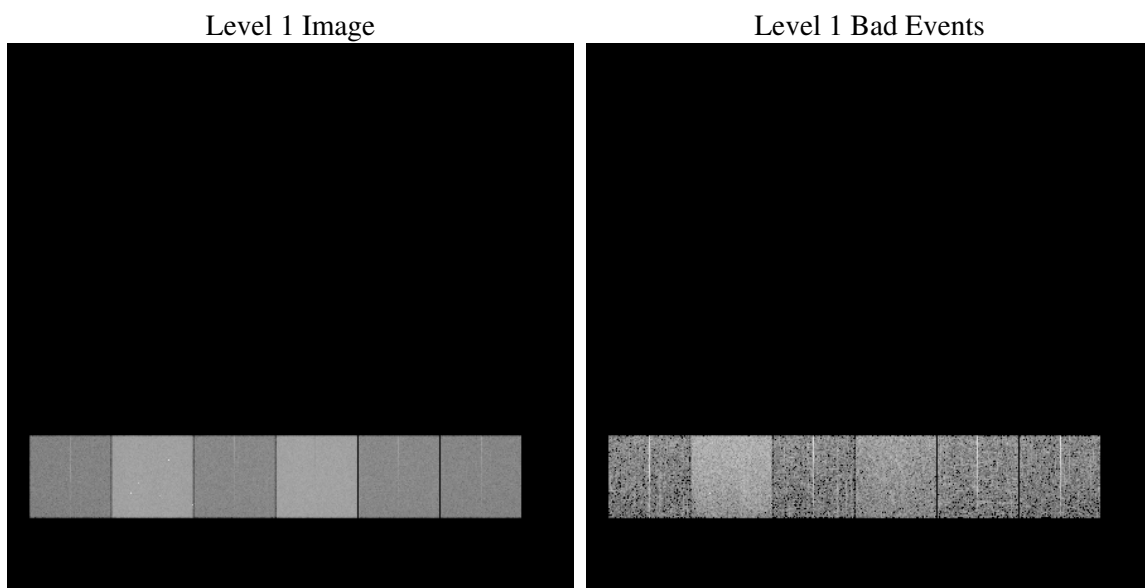
# 1 Front

seq_num	&#160
obs_id	61828
title	ACIS-456789 diagnostics
observer	CHANDRA engineering request/realtime commanding
object	&#160
dtcycle	0
cycle	P
ra_targ	0.0
dec_targ	0.0
ra_nom	91.900077989062
dec_nom	-71.668375281893
roll_nom	16.361720371909
revision	3
ontime	5118.590496242
livetime	5053.7758213335
ontime4	2153.7325353324
ontime5	5484.8198109418
ontime6	2351.3947753012
ontime7	5118.590496242
ontime8	2377.405235067
ontime9	2283.2097656429
l2events	1357567

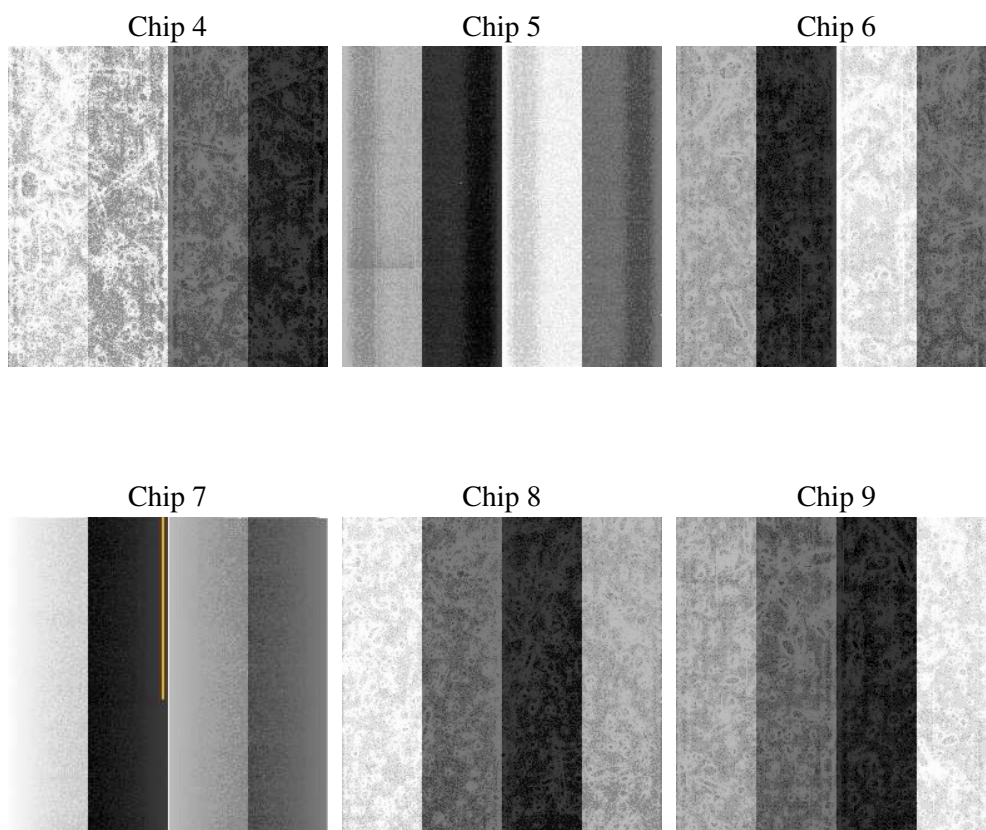
## 2 OBI

### 2.1 OBI

#### 2.1.1 Images



#### 2.1.2 Bias



### 2.1.3 Parameters

obi_num	0
ascdsver	7.6.10
caldsver	3.4.0
date	2007-06-20T15:58:18
revision	3

sched_exp_time	0.0
ontime	5118.590496242
ontime4	2153.7325353324
ontime5	5484.8198109418
ontime6	2351.3947753012
ontime7	5118.590496242
ontime8	2377.405235067
ontime9	2283.2097656429
l1events	1553822

### 2.1.4 Events

	ccd 4	ccd 5	ccd 6	ccd 7	ccd 8	ccd 9
level 1 events	170535	393651	197770	406552	200767	184547
rejected events	17631	38580	17547	24997	19467	16751
rejected %	10%	9%	8%	6%	9%	9%

	ccd 4	ccd 5	ccd 6	ccd 7	ccd 8	ccd 9
grade 0 events	86759	89710	98628	98183	100188	92348
	50%	22%	49%	24%	49%	50%
grade 1 events	459	312	456	283	521	474
	0%	0%	0%	0%	0%	0%
grade 2 events	26944	125238	31096	83651	31830	29598
	15%	31%	15%	20%	15%	16%
grade 3 events	9248	23494	11167	38949	11407	10177
	5%	5%	5%	9%	5%	5%
grade 4 events	9414	23030	11122	38849	11241	10489
	5%	5%	5%	9%	5%	5%
grade 5 events	1226	7933	1438	5367	1511	1429
	0%	2%	0%	1%	0%	0%
grade 6 events	20767	94002	28483	122417	26867	25407
	12%	23%	14%	30%	13%	13%
grade 7 events	15718	29932	15380	18853	17202	14625
	9%	7%	7%	4%	8%	7%

## 2.2 Compared Parameters

Parameter	Planned	Actual	Parameter	Planned	Actual
Instrument	ACIS	ACIS	Obspar format version number	6	6
Detector	ACIS-456789	ACIS-456789	Obspar file type	PREDICTED	ACTUAL
Grating	NONE	NONE	Obspar update status	NONE	UPDATED
Data mode	FAINT	FAINT	On-chip summing requested	N	N
Observation mode	SECONDARY	SECONDARY	Subarray requested	NONE	NONE
Pointing RA	0	91.90007798906211	Alternating exposures requested	N	N
Pointing Dec	0	-71.66837528189291	Primary exposure time	0.000000	3.2
Pointing Roll	0.0	16.36172037190899			
SIM focus pos (mm)	-0.684267	-0.6828225247311905			
SIM defocus (mm)	0	0.8505141146731063			
SIM translation stage pos (mm)	-190.132523	250.466033080201			
SIM translation stage offset (mm)	0	-0.01005468664627074			
Observation start time	92561282.626	92561281.857173			
Observation start date	2000-12-07T07:28:03	2000-12-07T07:28:01			
Observation end time	92571792.976	92571792.20757399			
Observation end date	2000-12-07T10:23:13	2000-12-07T10:23:12			
Read mode	TIMED	TIMED			

## **2.3 Star Slots**

## **2.4 FID Slots**

## A Summary

### A.1 Status

V&V Scientist	Jen Lauer
V&V Date (YYYY-MM-DD)	2007.06.21
V&V Edition	1
V&V Disposition and Status	OK
V&V Charge Time	5.11859049

### A.2 Comments