

V&V Reference Report

L2 ASCDS Version : 8.4.5

Observation 618 - L2 Version 4
Chandra X-Ray Center

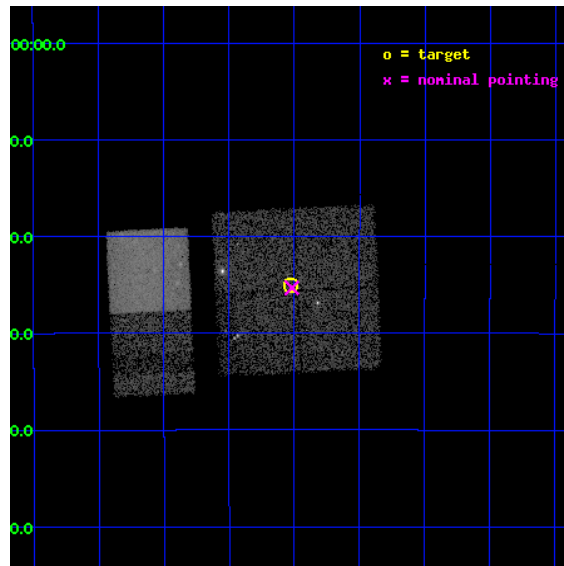
L2 Processing Date : Aug 29 2012

Contents

1	Front	2
2	OBI	3
2.1	OBI	3
2.1.1	Images	3
2.1.2	Bias	3
2.1.3	Parameters	4
2.1.4	Events	4
2.2	Compared Parameters	5
2.3	Aspect	6
2.4	Star Slots	9
2.4.1	Slot 3	9
2.4.2	Slot 4	10
2.4.3	Slot 5	11
2.4.4	Slot 6	12
2.4.5	Slot 7	13
2.5	FID Slots	14
2.5.1	Slot 0	14
2.5.2	Slot 1	15
2.5.3	Slot 2	16
A	Summary	17
A.1	Status	17
A.2	Comments	17

1 Front

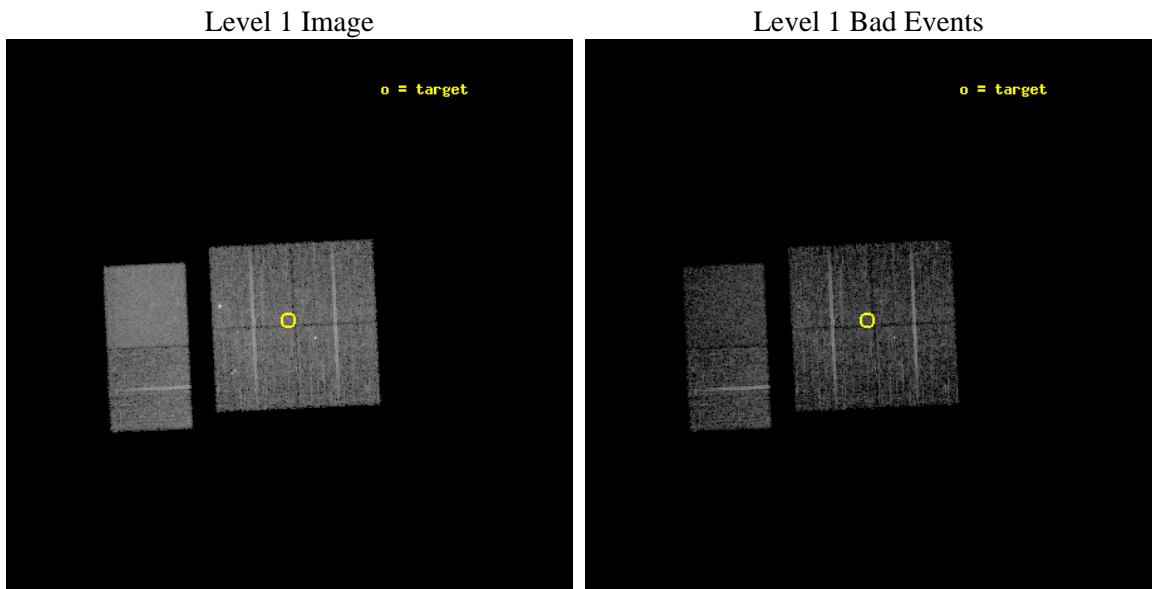
seq_num	200043	Sequence number
obs_id	618	Observation id
title	X-RAYS FROM THE RHO OPHIUCHI YOUNG STAR CLUSTER	Proposal title
observer	Dr. Thierry Montmerle	Principal investigator
object	OPHIUCHI MOSAIC #1	Source name
dtcycle	0	
cycle	P	events from which exps? Prim/Second/Both
ra_targ	246.382083	Observer's specified target RA [deg]
dec_targ	-24.4175	Observer's specified target Dec [deg]
ra_nom	246.37966817801	Nominal RA [deg]
dec_nom	-24.421996380937	Nominal Dec [deg]
roll_nom	267.3424152112	Nominal Roll [deg]
revision	4	Processing version of data
ontime	5078.4000047147	Sum of GTIs [s]
livetime	5014.0942460097	Livetime [s]
ontime0	5078.4000047147	Sum of GTIs [s]
ontime1	5078.4000047147	Sum of GTIs [s]
ontime2	5078.4000047147	Sum of GTIs [s]
ontime3	5078.4000047147	Sum of GTIs [s]
ontime6	5078.4000047147	Sum of GTIs [s]
ontime7	5078.4000047147	Sum of GTIs [s]
l2events	63528	Number of level 2 events



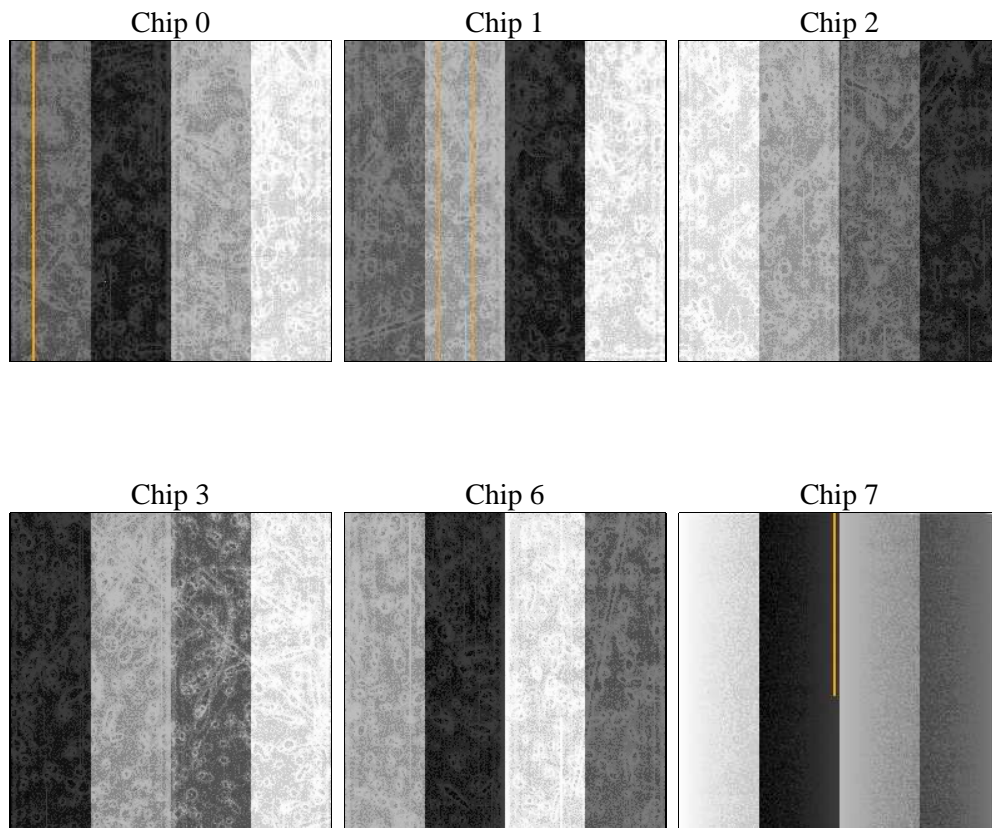
2 OBI

2.1 OBI

2.1.1 Images



2.1.2 Bias



2.1.3 Parameters

obi_num	0	Obi number	sched_exp_time	4940.000000	[s] Scheduled observation exposure time
ascdsver	8.4.5	Processing system revision	ontime	5078.4000047147	Sum of GTIs [s]
caldsver	4.5.1.1	 	ontime0	5078.4000047147	Sum of GTIs [s]
date	2012-08-29T15:03:56	Date and time of file creation	ontime1	5078.4000047147	Sum of GTIs [s]
revision	4	Processing version of data	ontime2	5078.4000047147	Sum of GTIs [s]
			ontime3	5078.4000047147	Sum of GTIs [s]
			ontime6	5078.4000047147	Sum of GTIs [s]
			ontime7	5078.4000047147	Sum of GTIs [s]
			l1events	259850	Number of level 1 events

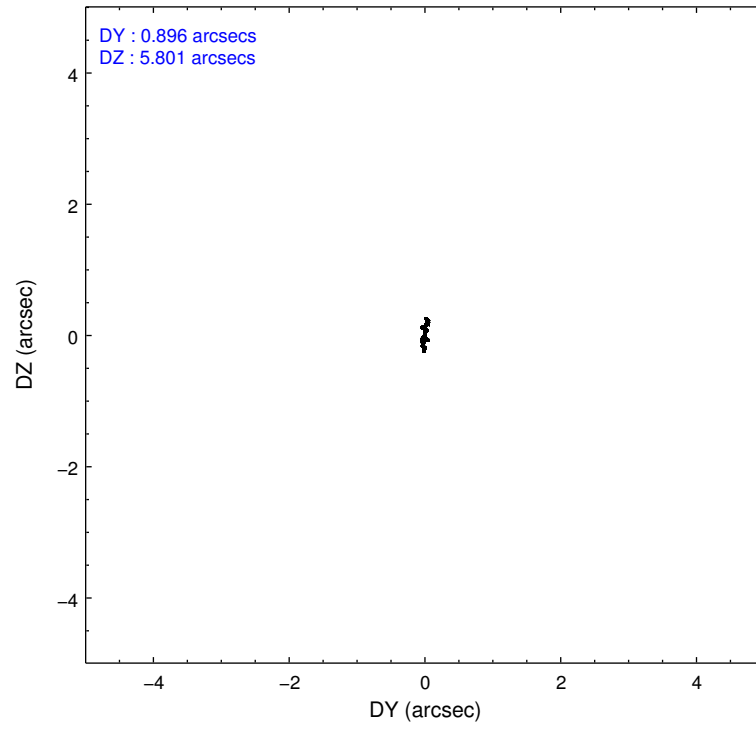
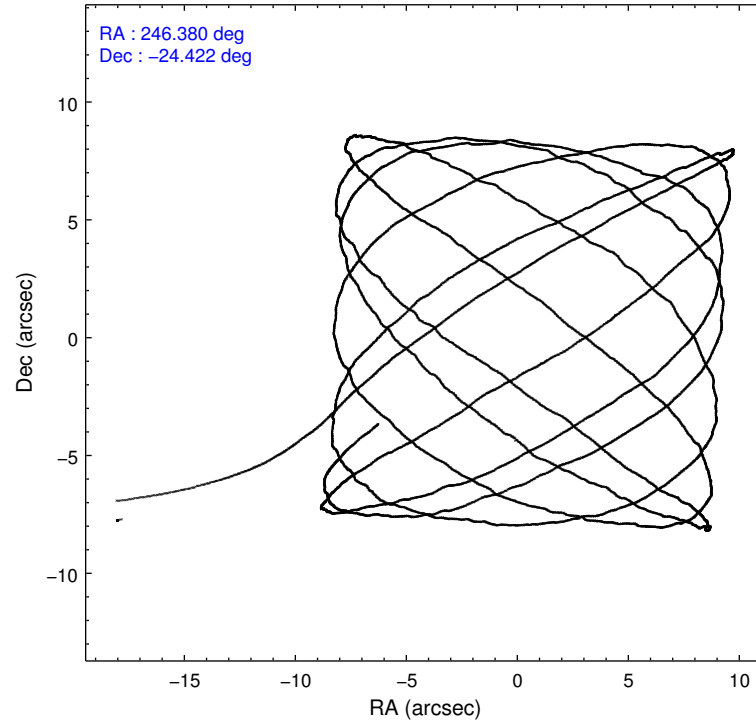
2.1.4 Events

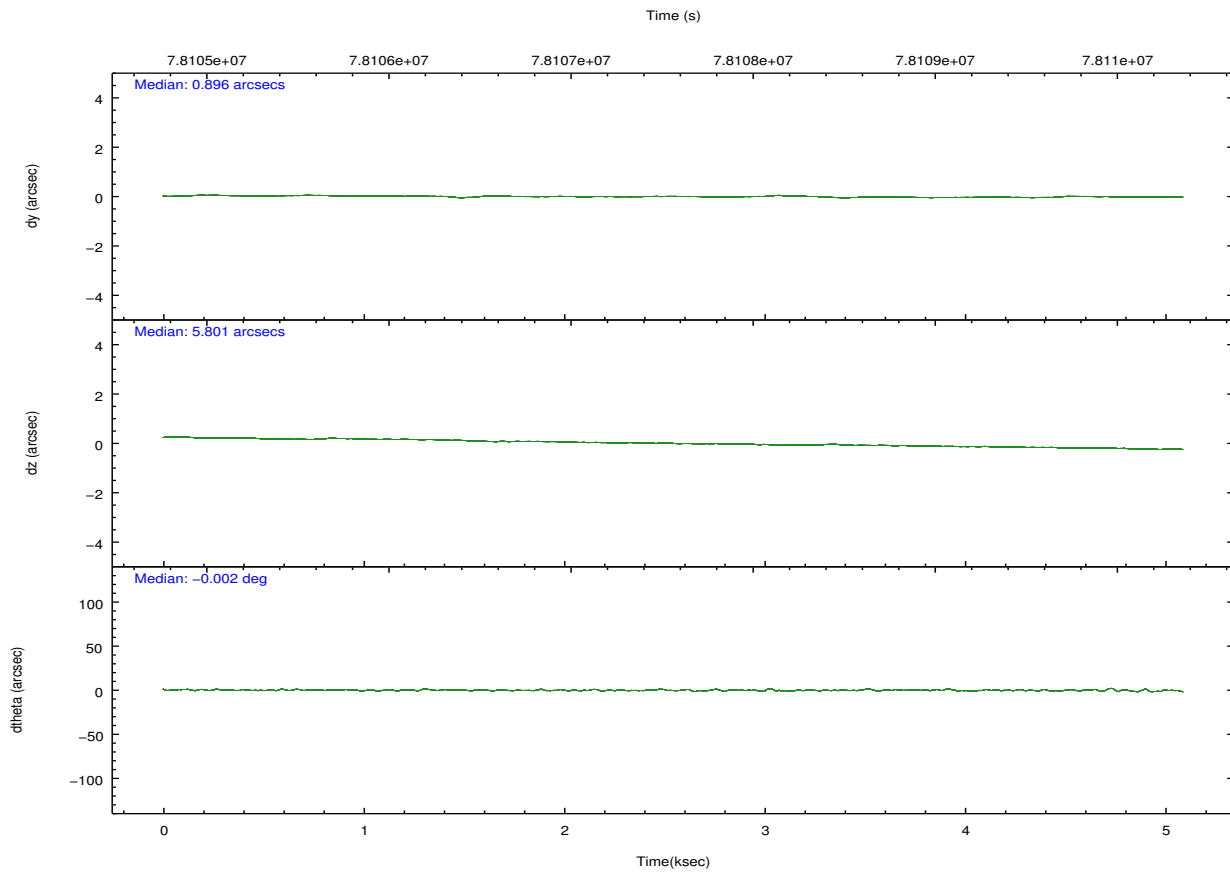
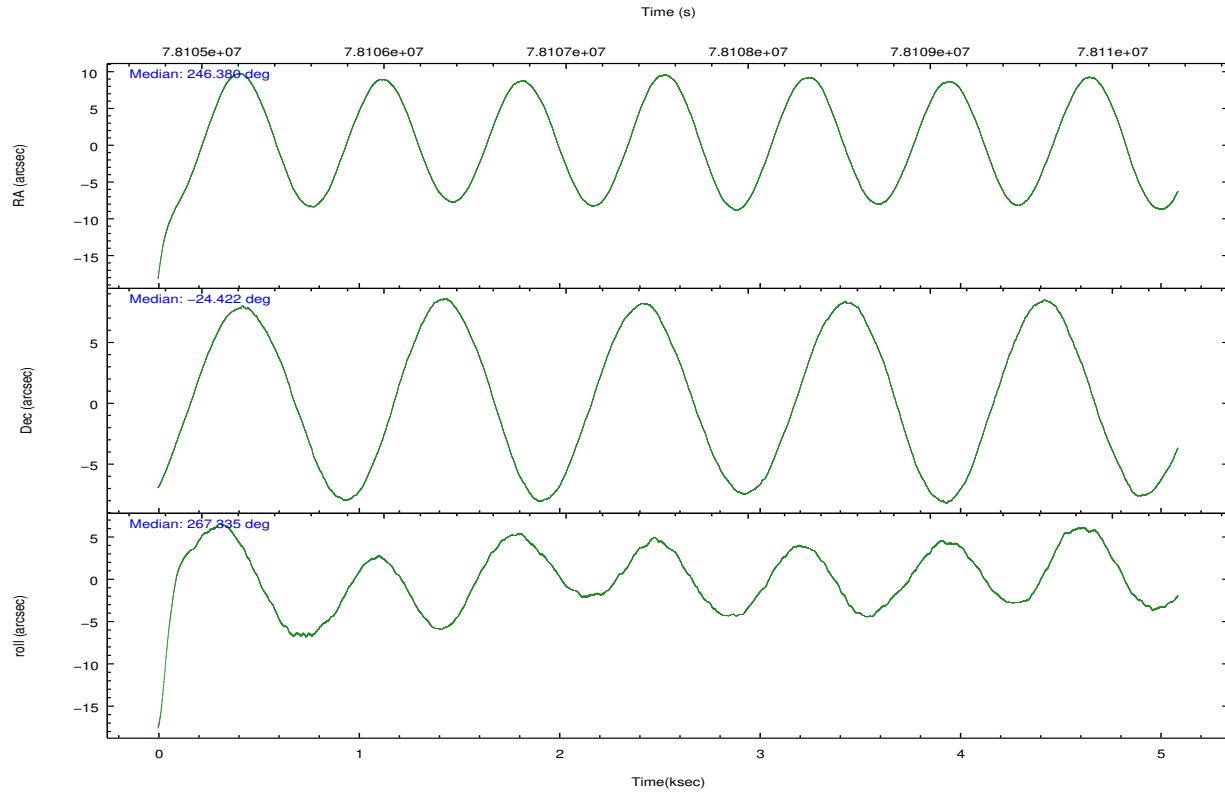
	ccd 0	ccd 1	ccd 2	ccd 3	ccd 6	ccd 7		ccd 0	ccd 1	ccd 2	ccd 3	ccd 6	ccd 7
level 1 events	39481	34920	40661	42629	40836	61323	grade 0 events	4100	2542	2957	4983	2546	5109
rejected events	31758	29012	34732	33802	35213	26759		10%	7%	7%	11%	6%	8%
rejected %	80%	83%	85%	79%	86%	43%	grade 1 events	212	13	24	76	23	55
								0%	0%	0%	0%	0%	0%
							grade 2 events	1783	1641	1413	1968	1513	7483
								4%	4%	3%	4%	3%	12%
							grade 3 events	504	480	381	541	457	3361
								1%	1%	0%	1%	1%	5%
							grade 4 events	542	448	452	541	406	3364
								1%	1%	1%	1%	0%	5%
							grade 5 events	1189	1228	1094	1270	1398	4239
								3%	3%	2%	2%	3%	6%
							grade 6 events	1266	1213	1164	1255	1147	16758
								3%	3%	2%	2%	2%	27%
							grade 7 events	29885	27355	33176	31995	33346	20954
								75%	78%	81%	75%	81%	34%

2.2 Compared Parameters

Parameter	Planned	Actual	Parameter	Planned	Actual
Instrument	ACIS	ACIS	Obspar format version number	7	7
Detector	ACIS-012367	ACIS-012367	Obspar file type	PREDICTED	ACTUAL
Grating	NONE	NONE	Obspar update status	NONE	UPDATED
Data mode	FAINT	FAINT	Number of optional ACIS chips dropped	0	0
Observation mode	POINTING	POINTING	On-chip summing requested	N	N
[deg] Pointing RA	246.365966	246.3796681780087	Subarray requested	NONE	NONE
[deg] Pointing Dec	-24.397403	-24.42199638093679	Alternating exposures requested	N	N
[deg] Pointing Roll	267.128095	267.3424152112027	[s] Primary exposure time	0.000000	3.2
[s] Window start time (MET)	63072064.184000	63072064.184000			
[s] Window stop time (MET)	84153664.184000	84153664.184000			
[mm] SIM focus pos	-0.782348	-0.7809083437167272			
[mm] SIM defocus	0	0.001439871863259334			
[mm] SIM translation stage pos	-233.592463	-233.5874344608287			
[mm] SIM translation stage offset	0	-0.005018542100998502			
[s] Observation start time (MET)	78105159.184000	78103915.639204			
Observation start date	2000-06-22T23:51:35	2000-06-22T23:31:55			
[s] Observation end time (MET)	78110099.184000	78110581.72694901			
Observation end date	2000-06-23T01:13:55	2000-06-23T01:23:01			
Read mode	TIMED	TIMED			

2.3 Aspect



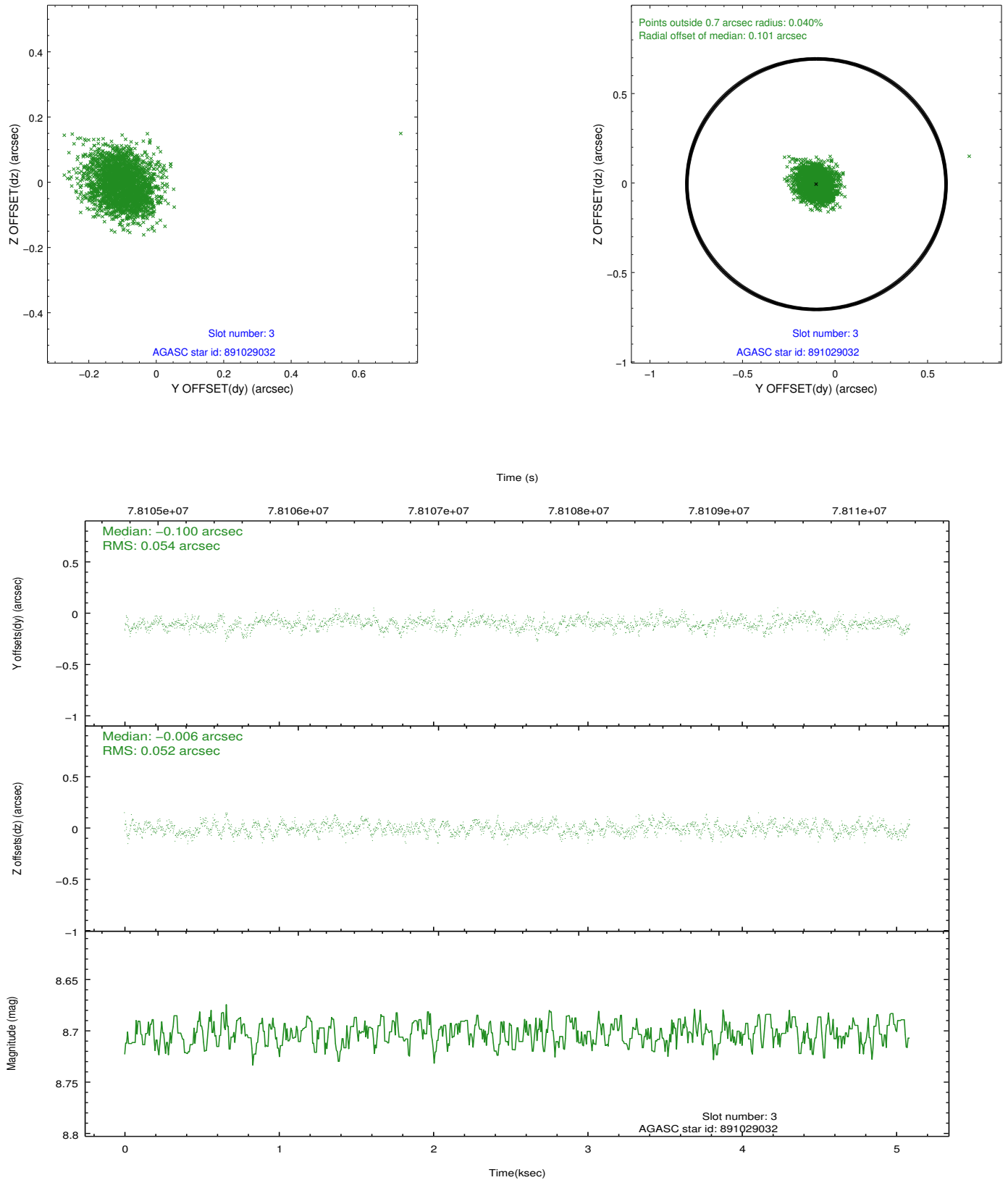


Slot Statistics

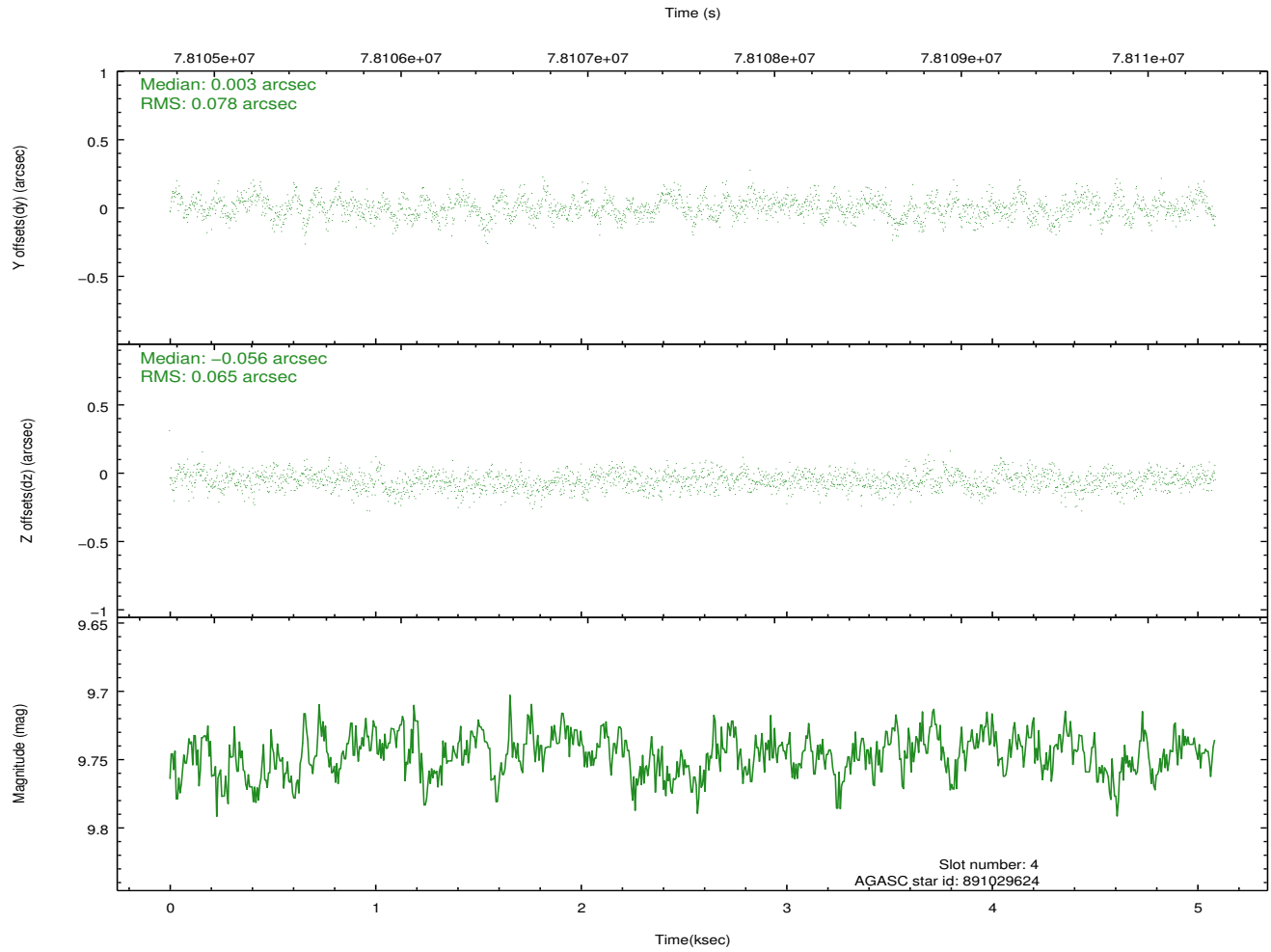
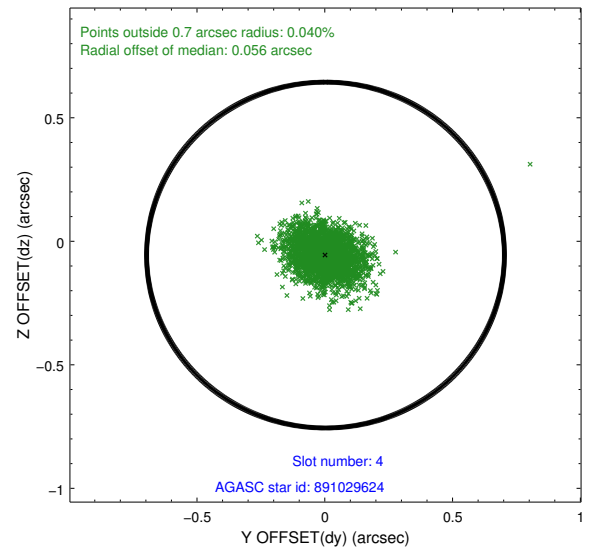
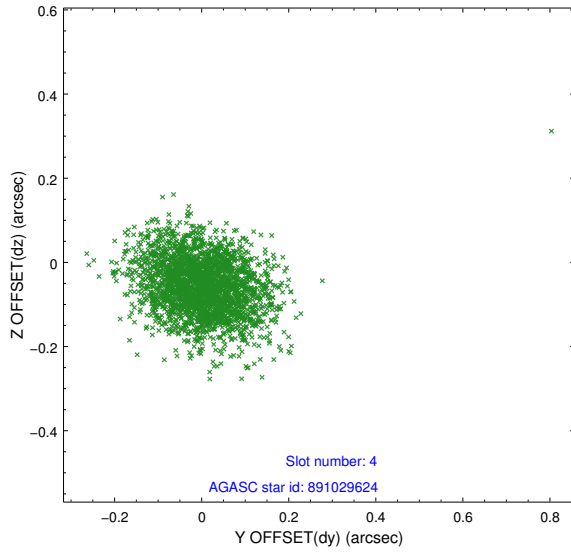
slot	status	id	mag	n_pts	med_dy	med_dz	dr1	dr2	ra	dec	mean_y	mean_z
0	FID	ACIS-I-2	7.16	1242	-0.031	-0.047	0.009	0.018	0.000000	0.000000	-755.25	-835.58
1	FID	ACIS-I-4	7.18	1242	-0.056	0.039	0.006	0.011	0.000000	0.000000	2158.25	1070.08
2	FID	ACIS-I-5	7.23	1241	-0.014	0.077	0.009	0.016	0.000000	0.000000	-1807.52	1069.33
3	GUIDE	891029032	8.70	2482	-0.100	-0.006	0.078	0.125	245.653034	-24.382970	72.65	-2337.03
4	GUIDE	891029624	9.75	2482	0.003	-0.056	0.105	0.175	245.713058	-24.612635	887.53	-2096.10
5	GUIDE	891028360	8.30	2481	0.159	0.018	0.070	0.112	246.088822	-25.025389	2305.97	-790.21
6	GUIDE	891028104	9.37	2482	-0.138	-0.012	0.087	0.141	246.615701	-25.040208	2273.01	929.49
7	GUIDE	891031768	7.57	2481	0.078	0.055	0.073	0.121	246.351325	-24.465712	250.22	-35.17

2.4 Star Slots

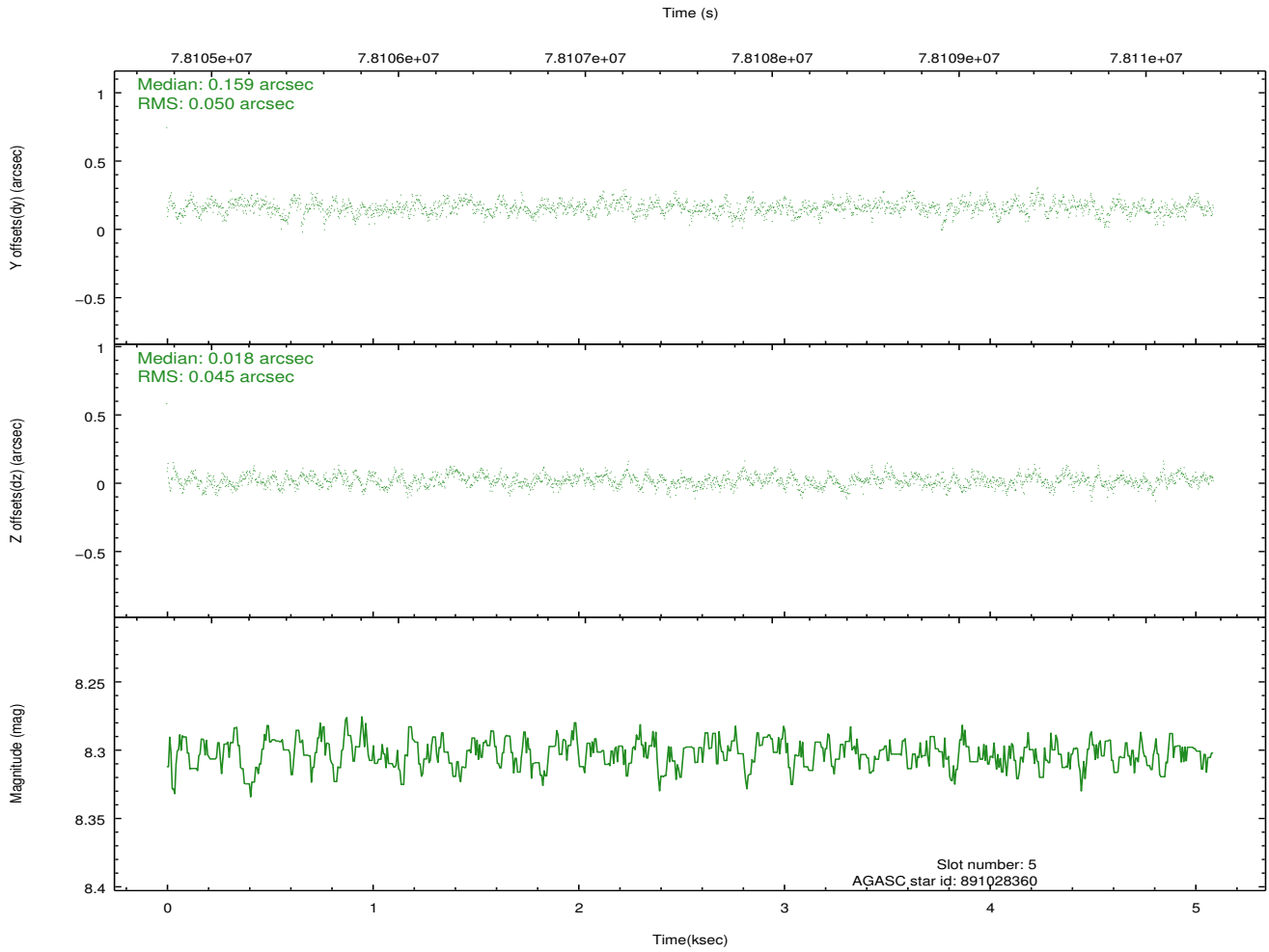
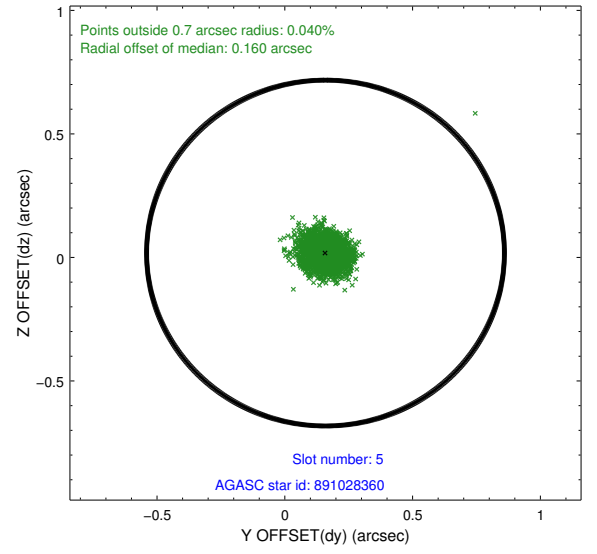
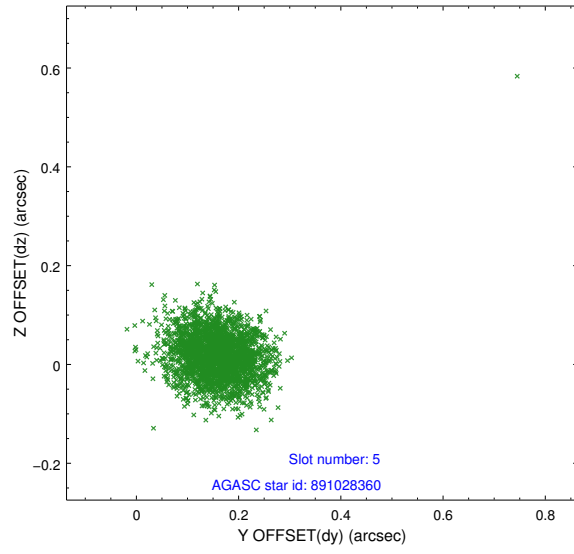
2.4.1 Slot 3



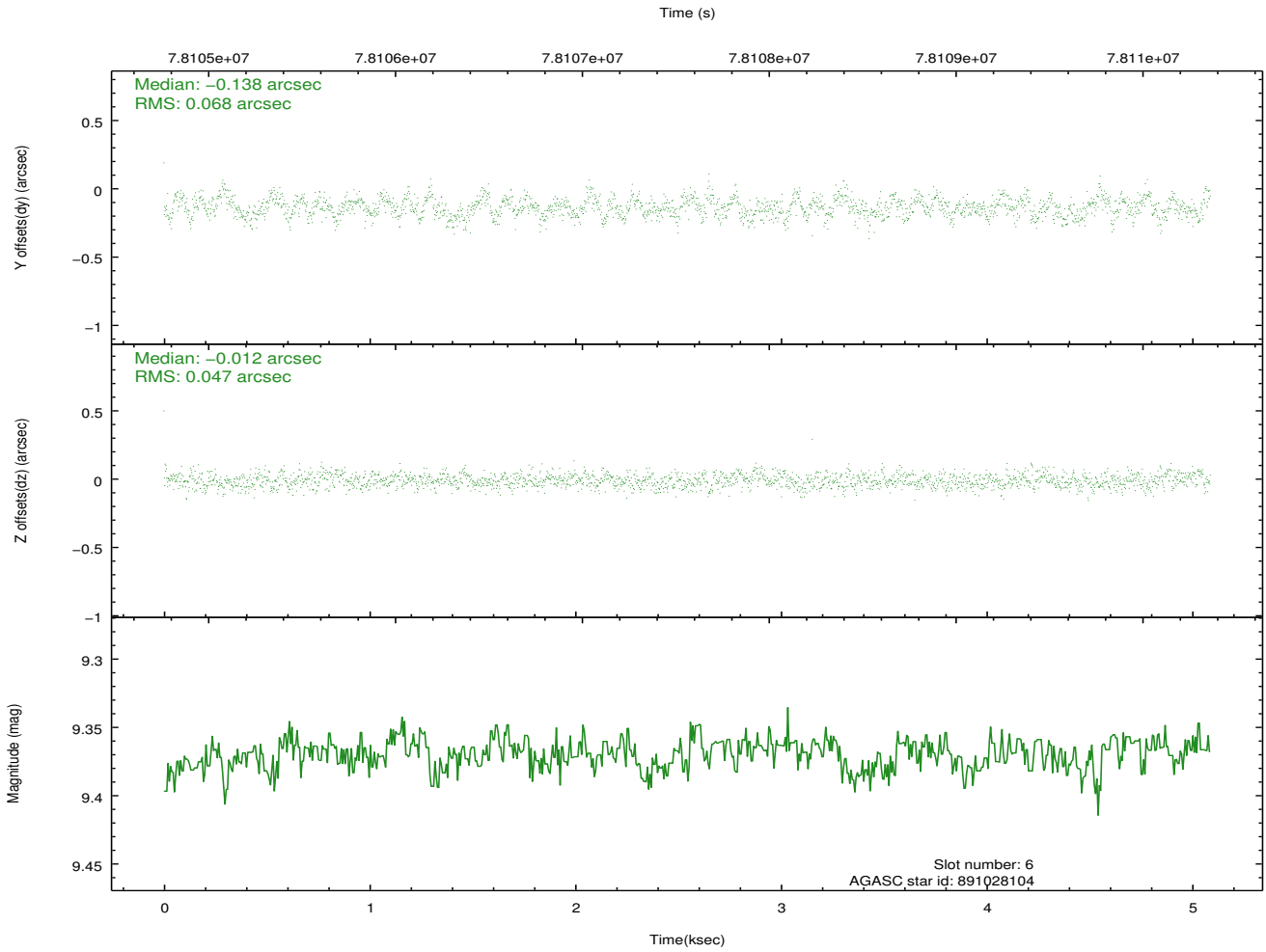
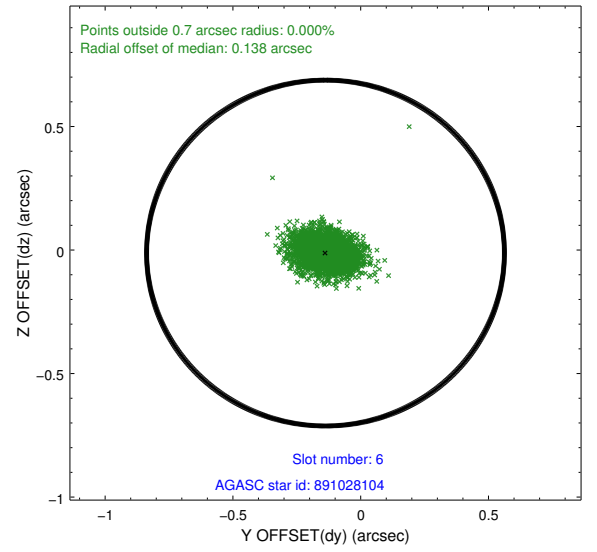
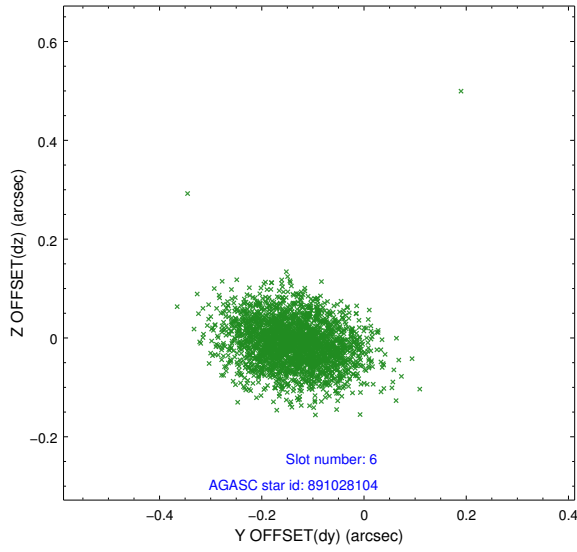
2.4.2 Slot 4



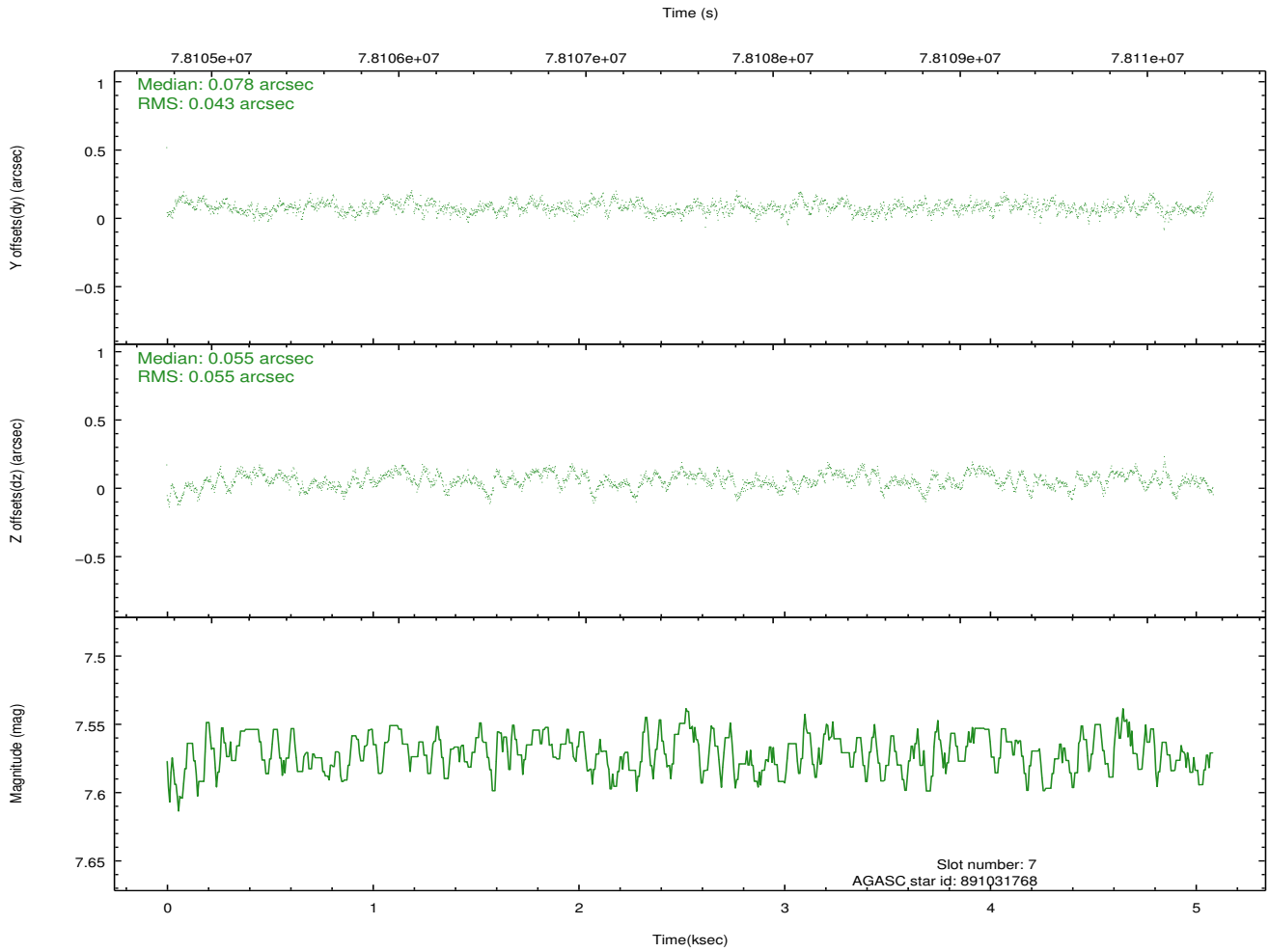
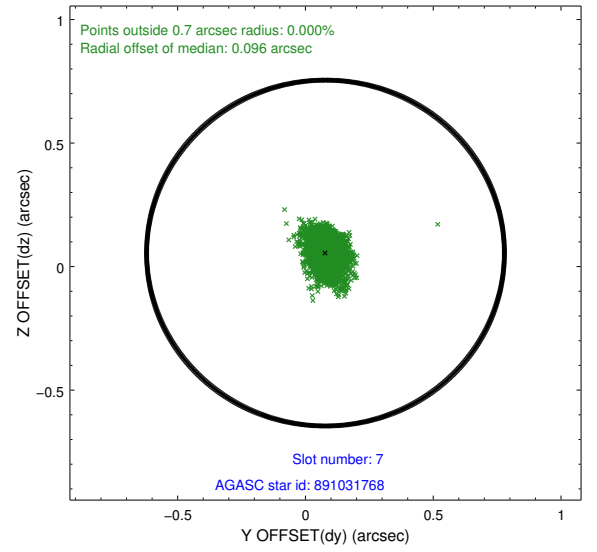
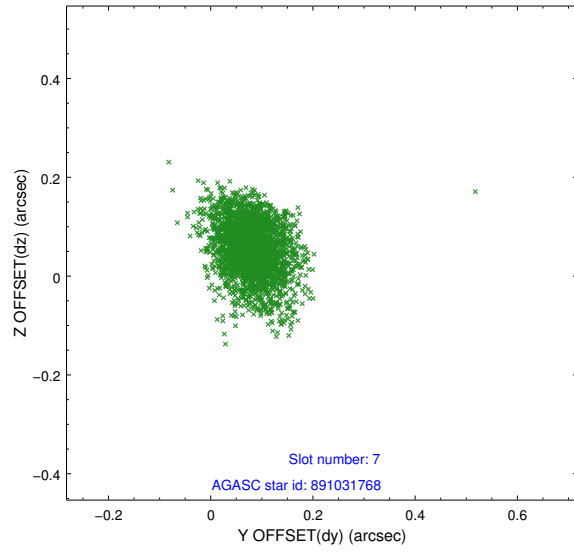
2.4.3 Slot 5



2.4.4 Slot 6

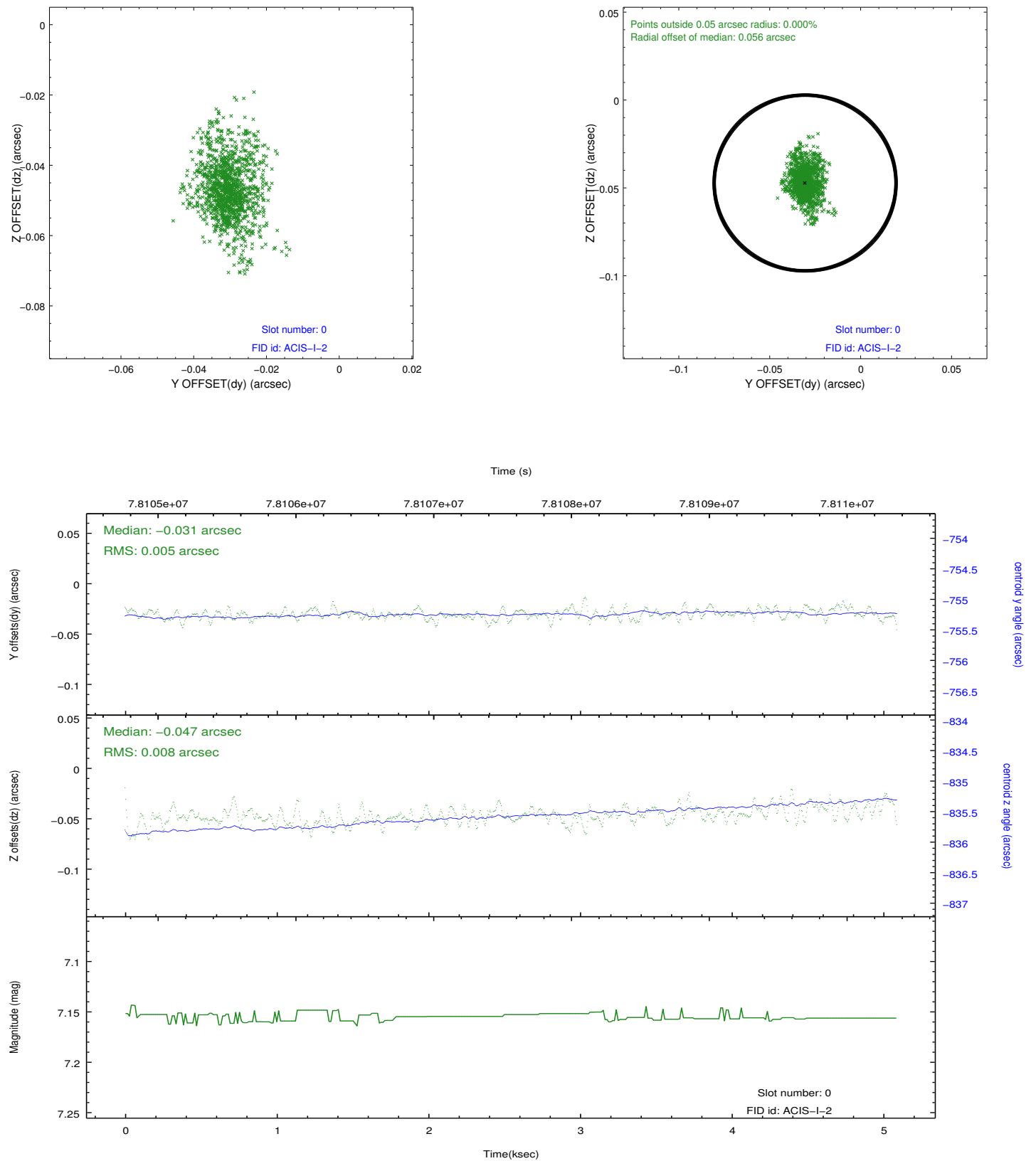


2.4.5 Slot 7

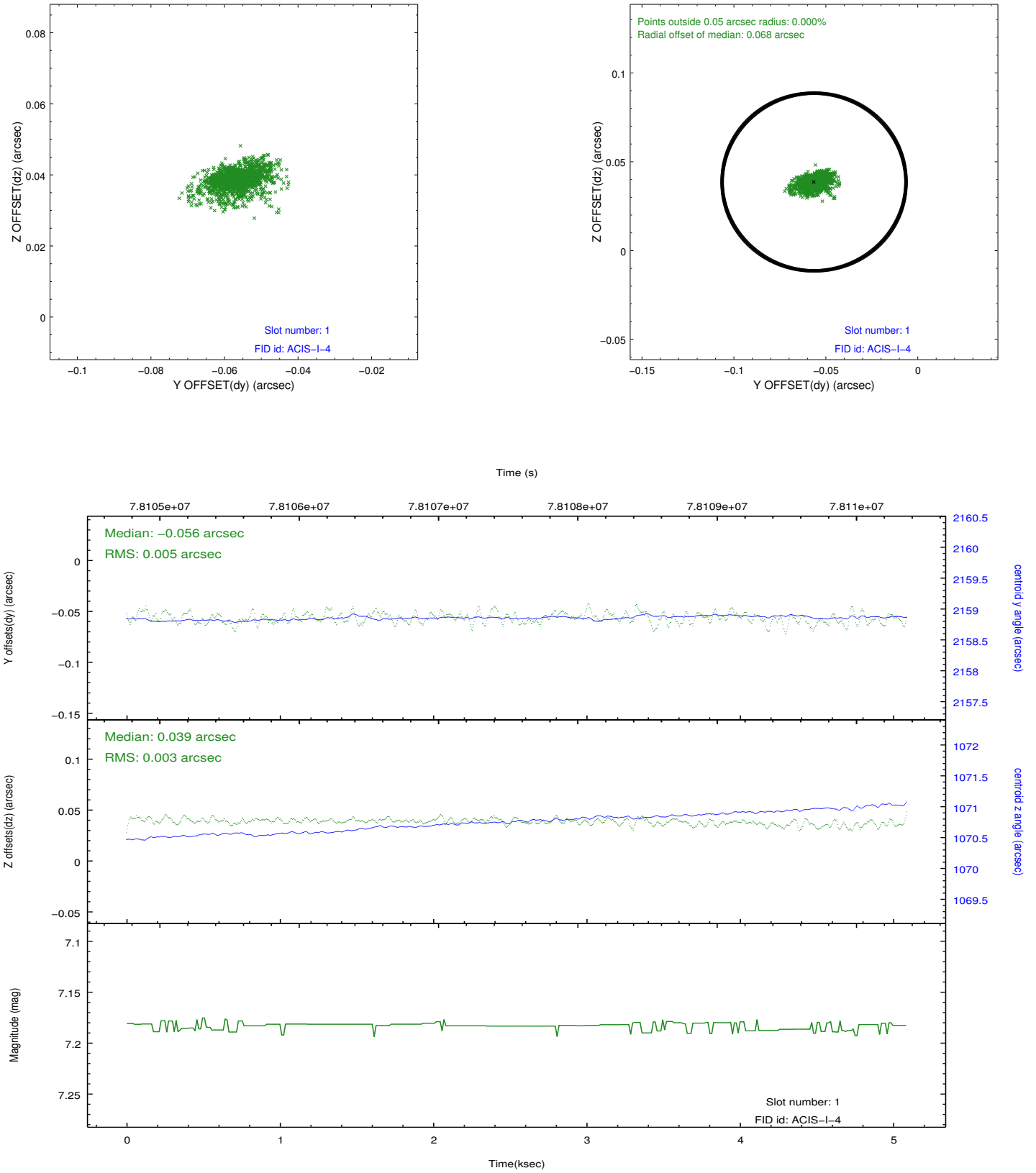


2.5 FID Slots

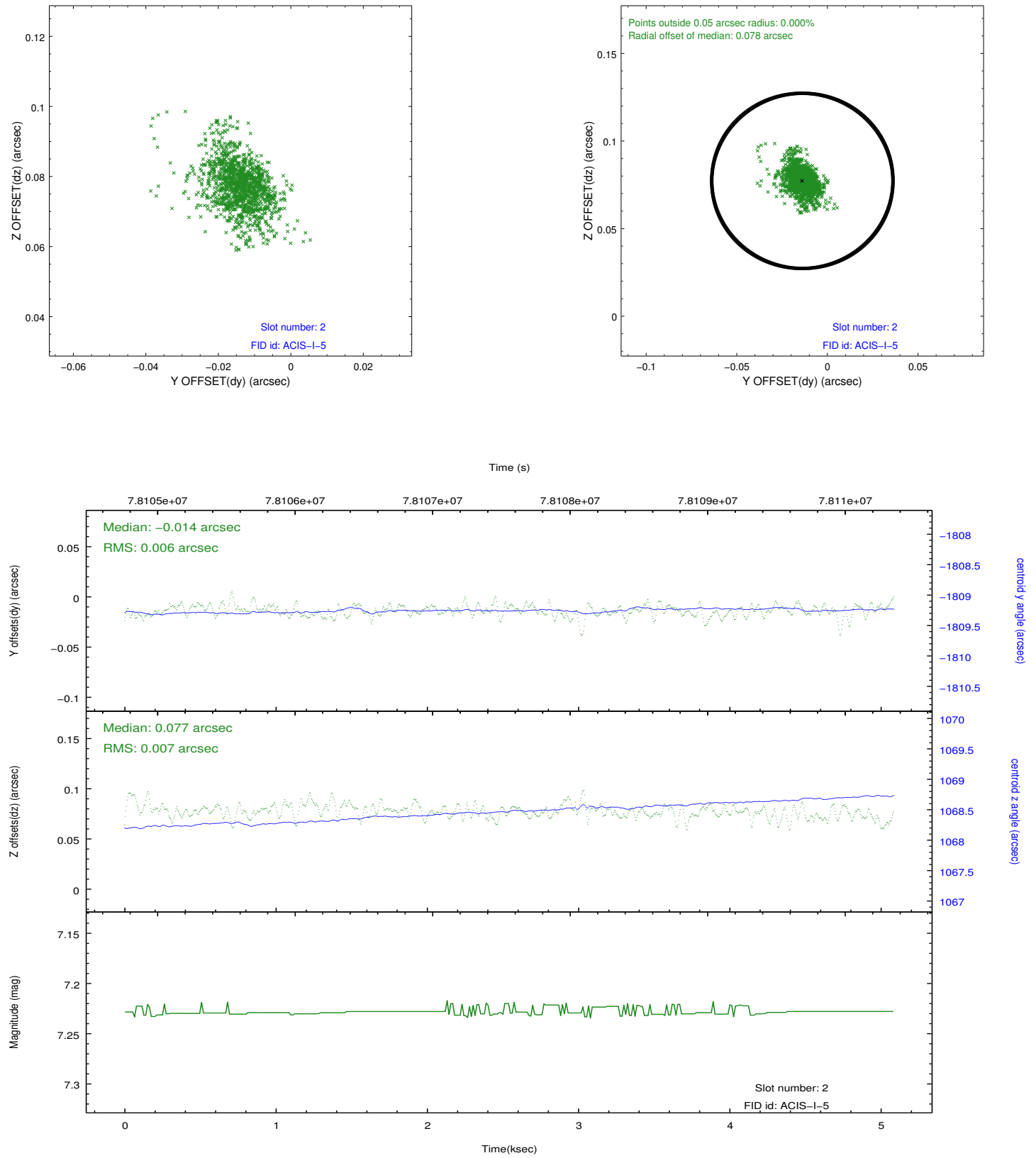
2.5.1 Slot 0



2.5.2 Slot 1



2.5.3 Slot 2



A Summary

A.1 Status

V&V Scientist	Jen Lauer
V&V Date (YYYY-MM-DD)	2012.08.31
V&V Edition	1
V&V Disposition and Status	OK
V&V Charge Time	5.078

A.2 Comments

Window constraint met.