

V&V Reference Report

L2 ASCDS Version : 8.4.5

Observation 61538 - L2 Version 3
Chandra X-Ray Center

L2 Processing Date : Sep 20 2012

Contents

1	Front	2
2	OBI	3
2.1	OBI	3
2.1.1	Images	3
2.1.2	Bias	3
2.1.3	Parameters	4
2.1.4	Events	4
2.2	Compared Parameters	5
2.3	Star Slots	6
2.4	FID Slots	6
A	Summary	7
A.1	Status	7
A.2	Comments	7

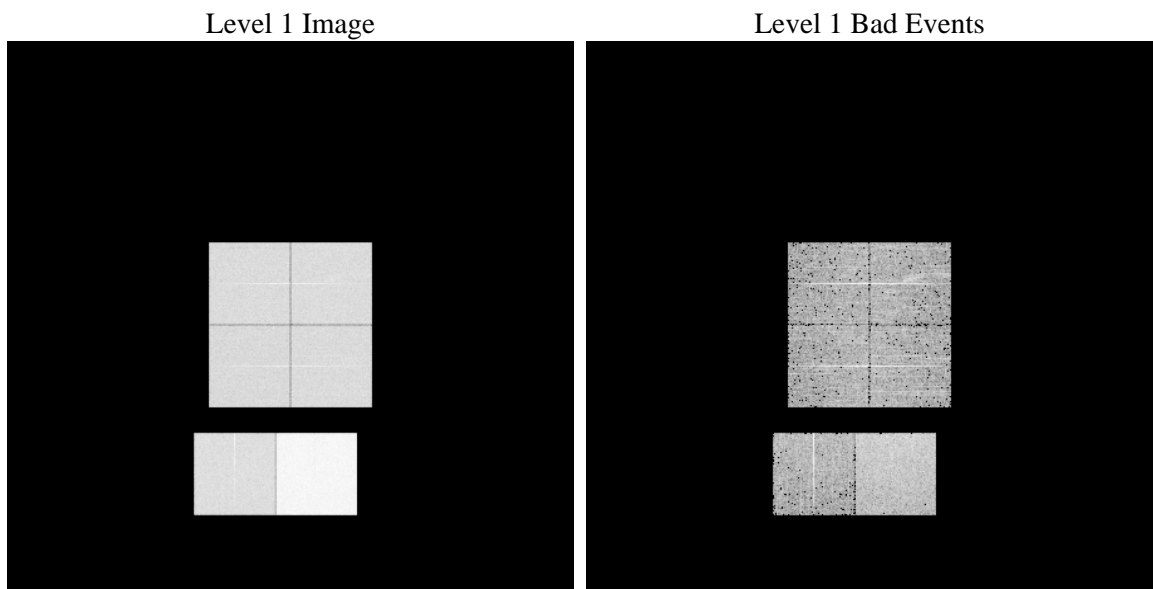
1 Front

seq_num	 	Sequence number
obs_id	61538	Observation id
title	ACIS-012367 diagnostics	Proposal title
observer	CHANDRA engineering request/realtime commanding	Principal investig
object	 	Source name
dtcycle	0	
cycle	P	events from which exps? Prim/Second/Both
ra_targ	0.0	Observer's specified target RA [deg]
dec_targ	0.0	Observer's specified target Dec [deg]
ra_nom	289.03586497112	Nominal RA [deg]
dec_nom	-36.99949263272	Nominal Dec [deg]
roll_nom	328.32220779056	Nominal Roll [deg]
revision	3	Processing version of data
ontime	7530.819895491	Sum of GTIs [s]
livetime	7435.460119459	Livetime [s]
ontime0	2928.6659448594	Sum of GTIs [s]
ontime1	2964.3586741388	Sum of GTIs [s]
ontime2	2705.1170230955	Sum of GTIs [s]
ontime3	2834.5944527537	Sum of GTIs [s]
ontime6	3096.1182075143	Sum of GTIs [s]
ontime7	7530.819895491	Sum of GTIs [s]
l2events	1327609	Number of level 2 events

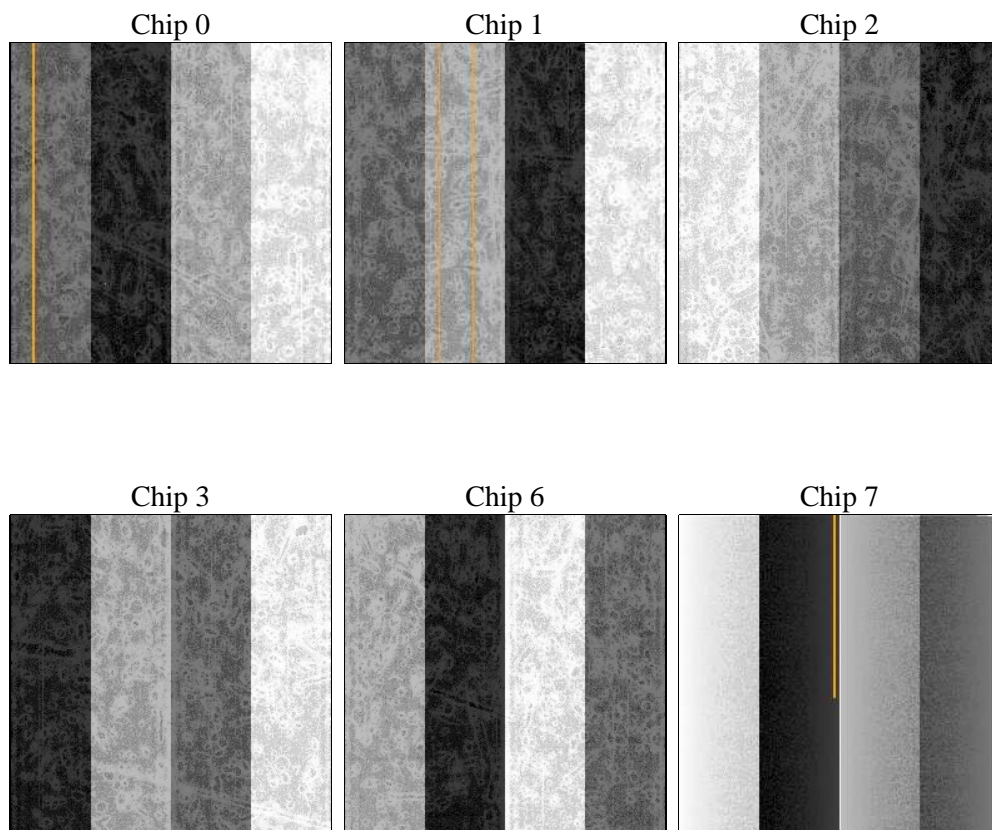
2 OBI

2.1 OBI

2.1.1 Images



2.1.2 Bias



2.1.3 Parameters

obi_num	0	Obi number	sched_exp_time	0.0	[s] Scheduled observation exposure time
ascdsver	8.4.5	Processing system revision	ontime	7530.819895491	Sum of GTIs [s]
caldbver	4.5.1.1	 	ontime0	2928.6659448594	Sum of GTIs [s]
date	2012-09-21T00:33:04	Date and time of file creation	ontime1	2964.3586741388	Sum of GTIs [s]
revision	3	Processing version of data	ontime2	2705.1170230955	Sum of GTIs [s]
			ontime3	2834.5944527537	Sum of GTIs [s]
			ontime6	3096.1182075143	Sum of GTIs [s]
			ontime7	7530.819895491	Sum of GTIs [s]
			l1events	1545712	Number of level 1 events

2.1.4 Events

	ccd 0	ccd 1	ccd 2	ccd 3	ccd 6	ccd 7		ccd 0	ccd 1	ccd 2	ccd 3	ccd 6	ccd 7
level 1 events	202340	206321	190390	199935	222788	523938	grade 0 events	98474	100645	92382	98115	107118	120029
rejected events	22949	23823	23445	24491	25238	42716		48%	48%	48%	49%	48%	22%
rejected %	11%	11%	12%	12%	11%	8%	grade 1 events	487	515	442	496	529	296
								0%	0%	0%	0%	0%	0%
							grade 2 events	32215	32274	30088	31026	34815	106117
								15%	15%	15%	15%	15%	20%
							grade 3 events	11232	11485	10386	10911	11948	48381
								5%	5%	5%	5%	5%	9%
							grade 4 events	11136	11477	10296	10890	11834	47956
								5%	5%	5%	5%	5%	9%
							grade 5 events	1623	1683	1574	1683	1948	8646
								0%	0%	0%	0%	0%	1%
							grade 6 events	26334	26617	23793	24502	31835	158739
								13%	12%	12%	12%	14%	30%
							grade 7 events	20839	21625	21429	22312	22761	33774
								10%	10%	11%	11%	10%	6%

2.2 Compared Parameters

Parameter	Planned	Actual	Parameter	Planned	Actual
Instrument	ACIS	ACIS	Obspar format version number	7	7
Detector	ACIS-012367	ACIS-012367	Obspar file type	PREDICTED	ACTUAL
Grating	NONE	NONE	Obspar update status	NONE	UPDATED
Data mode	FAINT	FAINT	On-chip summing requested	N	N
Observation mode	SECONDARY	SECONDARY	Subarray requested	NONE	NONE
[deg] Pointing RA	0	289.0358649711213	Alternating exposures requested	N	N
[deg] Pointing Dec	0	-36.99949263271954	[s] Primary exposure time	0.000000	3.2
[deg] Pointing Roll	0.0	328.3222077905592			
[mm] SIM focus pos	-0.782348	-0.7809083437167272			
[mm] SIM defocus	0	0.7524282956875696			
[mm] SIM translation stage pos	-233.592463	250.466033080201			
[mm] SIM translation stage offset	0	-0.01005468664627074			
[s] Observation start time (MET)	111968192.627	111968191.85812			
Observation start date	2001-07-19T22:16:33	2001-07-19T22:16:31			
[s] Observation end time (MET)	111990617.577	111990616.809			
Observation end date	2001-07-20T04:30:18	2001-07-20T04:30:16			
Read mode	TIMED	TIMED			

2.3 Star Slots

2.4 FID Slots

A Summary

A.1 Status

V&V Scientist	Beth Sundheim
V&V Date (YYYY-MM-DD)	2012.09.24
V&V Edition	1
V&V Disposition and Status	OK
V&V Charge Time	7.530819895491

A.2 Comments