

V&V Reference Report

L2 ASCDS Version : 7.6.9

Observation 61518 - L2 Version 001
Chandra X-Ray Center

L2 Processing Date : Dec 16 2006

Contents

1	Front	2
2	OBI	3
2.1	OBI	3
2.1.1	Images	3
2.1.2	Bias	3
2.1.3	Parameters	4
2.1.4	Events	4
2.2	Compared Parameters	5
2.3	Aspect	6
2.4	Star Slots	8
2.5	FID Slots	8
A	Summary	9
A.1	Status	9
A.2	Comments	9

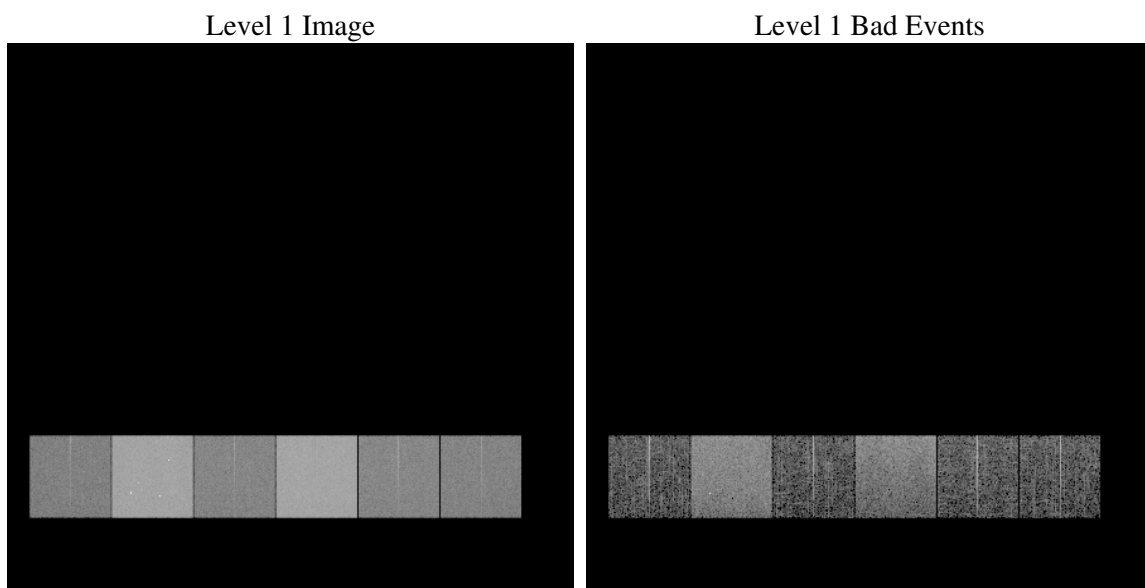
1 Front

seq_num	
obs_id	61518
title	ACIS-456789 diagnostics
observer	CHANDRA engineering request/realtime commanding
object	
dtcycle	0
cycle	P
ra_targ	0.0
dec_targ	0.0
ra_nom	341.96583147545
dec_nom	33.000582811083
roll_nom	146.09492787203
revision	2
ontime	5671.5460106134
livetime	5599.729480032
ontime4	2122.6508689672
ontime5	6103.8181234002
ontime6	2310.6307500154
ontime7	5671.5460106134
ontime8	2381.9339388162
ontime9	2249.0513688922
l2events	1199859

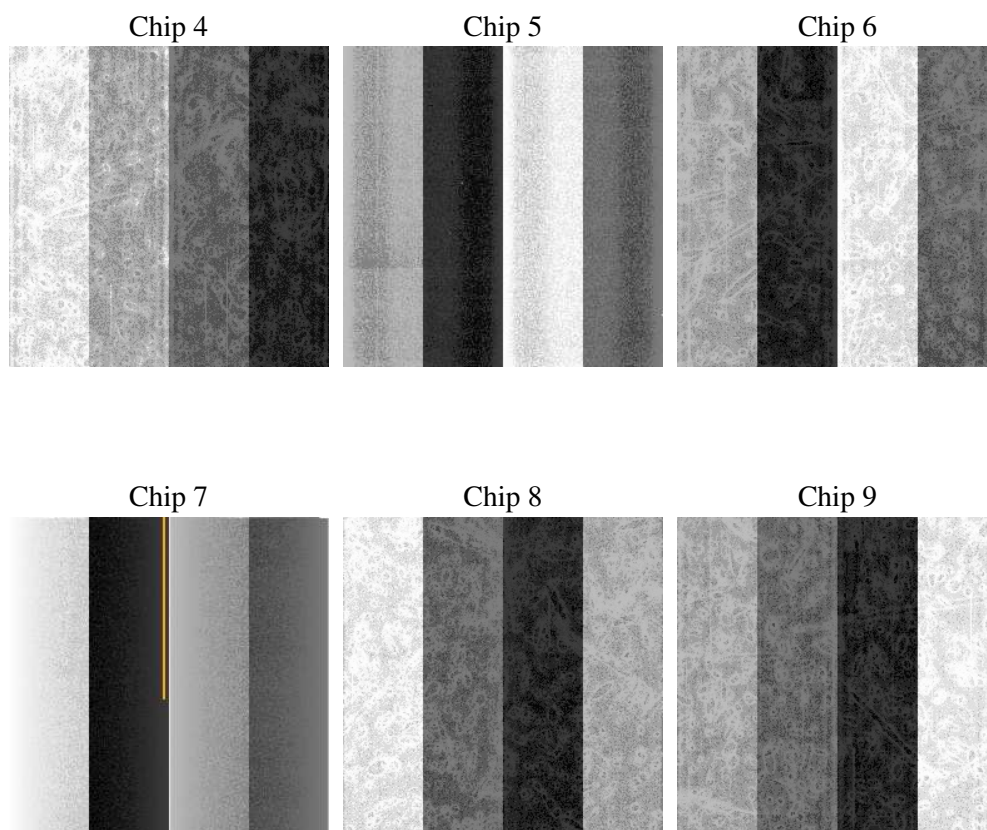
2 OBI

2.1 OBI

2.1.1 Images



2.1.2 Bias



2.1.3 Parameters

obi_num	0
ascdsver	7.6.9
caldsver	3.2.4
date	2006-12-16T05:30:42
revision	2

sched_exp_time	0.0
ontime	5675.0154726207
ontime4	2126.1203309745
ontime5	6106.063606143
ontime6	2314.1002120227
ontime7	5675.0154726207
ontime8	2385.4034008235
ontime9	2252.5208308995
l1events	1427474

2.1.4 Events

	ccd 4	ccd 5	ccd 6	ccd 7	ccd 8	ccd 9
level 1 events	146559	384658	168986	393648	174999	158624
rejected events	19733	54186	19105	41623	21099	18935
rejected %	13%	14%	11%	10%	12%	11%

	ccd 4	ccd 5	ccd 6	ccd 7	ccd 8	ccd 9
grade 0 events	71683	42765	81664	67776	85000	76196
	48%	11%	48%	17%	48%	48%
grade 1 events	444	88	416	156	456	391
	0%	0%	0%	0%	0%	0%
grade 2 events	22539	157500	26166	104224	27071	25094
	15%	40%	15%	26%	15%	15%
grade 3 events	7797	11534	9314	27341	9718	8668
	5%	2%	5%	6%	5%	5%
grade 4 events	7846	11294	9315	26908	9520	8738
	5%	2%	5%	6%	5%	5%
grade 5 events	1265	6488	1465	6016	1533	1427
	0%	1%	0%	1%	0%	0%
grade 6 events	17154	107547	23626	125973	22789	21209
	11%	27%	13%	32%	13%	13%
grade 7 events	17831	47442	17020	35254	18912	16901
	12%	12%	10%	8%	10%	10%

2.2 Compared Parameters

Parameter	Planned	Actual	Parameter	Planned	Actual
Instrument	ACIS	ACIS	Obspar format version number	6	6
Detector	ACIS-456789	ACIS-456789	Obspar file type	PREDICTED	ACTUAL
Grating	NONE	NONE	Obspar update status	NONE	UPDATED
Data mode	FAINT	FAINT	On-chip summing requested	N	N
Observation mode	SECONDARY	SECONDARY	Subarray requested	NONE	NONE
Pointing RA	0	341.9658314754471	Alternating exposures requested	N	N
Pointing Dec	0	33.0005828110827	Primary exposure time	0.000000	3.2
Pointing Roll	0.0	146.094927872031			
SIM focus pos (mm)	-0.684267	-0.6828225247311905			
SIM defocus (mm)	0	0.8505141146731063			
SIM translation stage pos (mm)	-190.132523	250.466033080201			
SIM translation stage offset (mm)	0	-0.01005468664627074			
Observation start time	113078413.22	113078412.45171			
Observation start date	2001-08-01T18:40:13	2001-08-01T18:40:12			
Observation end time	113112535.472	113112534.70305			
Observation end date	2001-08-02T04:08:55	2001-08-02T04:08:54			
Read mode	TIMED	TIMED			

2.3 Aspect

2.4 Star Slots

2.5 FID Slots

A Summary

A.1 Status

V&V Scientist	Beth Sundheim
V&V Date (YYYY-MM-DD)	2006.12.17
V&V Edition	1
V&V Disposition and Status	OK
V&V Charge Time	5.67154601

A.2 Comments