

V&V Reference Report

L2 ASCDS Version : 8.5.1.1

Observation 61508 - L2 Version 4
Chandra X-Ray Center

L2 Processing Date : Jan 3 2013

Contents

1	Front	2
2	OBI	3
2.1	OBI	3
2.1.1	Images	3
2.1.2	Bias	3
2.1.3	Parameters	4
2.1.4	Events	4
2.2	Compared Parameters	5
2.3	Star Slots	6
2.4	FID Slots	6
A	Summary	7
A.1	Status	7
A.2	Comments	7

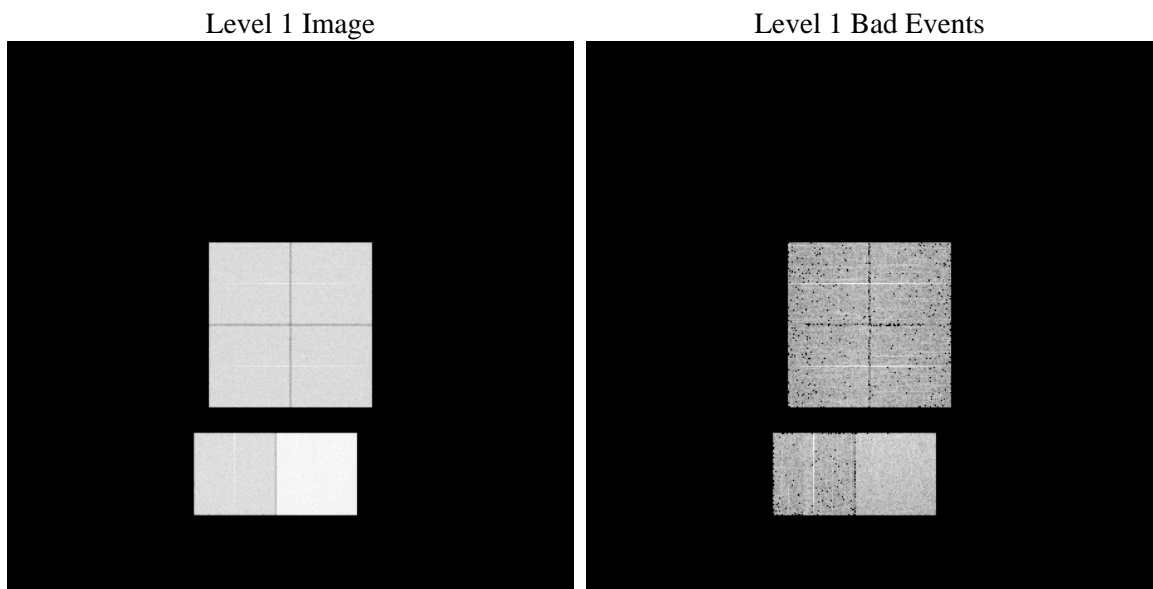
1 Front

seq_num	 	Sequence number
obs_id	61508	Observation id
title	ACIS-012367 diagnostics	Proposal title
observer	CHANDRA engineering request/realtime commanding	Principal investig
object	 	Source name
dtcycle	0	
cycle	P	events from which exps? Prim/Second/Both
ra_targ	0.0	Observer's specified target RA [deg]
dec_targ	0.0	Observer's specified target Dec [deg]
ra_nom	9.9754210775138	Nominal RA [deg]
dec_nom	8.0150842880216	Nominal Dec [deg]
roll_nom	115.57378919332	Nominal Roll [deg]
revision	4	Processing version of data
ontime	7627.0488756746	Sum of GTIs [s]
livetime	7530.4705903533	Livetime [s]
ontime0	2971.1218305826	Sum of GTIs [s]
ontime1	3003.5734997839	Sum of GTIs [s]
ontime2	2864.2508865744	Sum of GTIs [s]
ontime3	2847.8812973797	Sum of GTIs [s]
ontime6	3123.5739697069	Sum of GTIs [s]
ontime7	7627.0488756746	Sum of GTIs [s]
l2events	1327938	Number of level 2 events

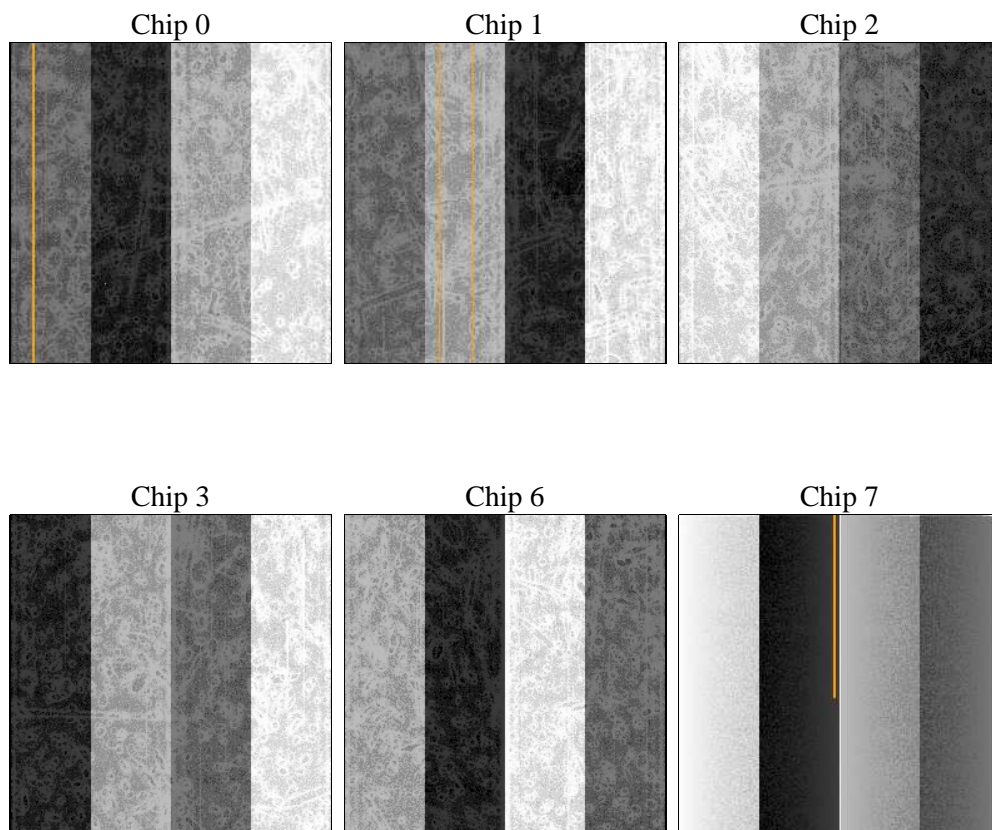
2 OBI

2.1 OBI

2.1.1 Images



2.1.2 Bias



2.1.3 Parameters

obi_num	0	Obi number	sched_exp_time	0.0	[s] Scheduled observation exposure time
ascdsver	8.5.1.1	Processing system revision	ontime	7627.0488756746	Sum of GTIs [s]
caldsver	4.5.5	 	ontime0	2971.1218305826	Sum of GTIs [s]
date	2013-01-03T02:12:01	Date and time of file creation	ontime1	3003.5734997839	Sum of GTIs [s]
revision	4	Processing version of data	ontime2	2864.2508865744	Sum of GTIs [s]
			ontime3	2847.8812973797	Sum of GTIs [s]
			ontime6	3123.5739697069	Sum of GTIs [s]
			ontime7	7627.0488756746	Sum of GTIs [s]
			l1events	1544457	Number of level 1 events

2.1.4 Events

	ccd 0	ccd 1	ccd 2	ccd 3	ccd 6	ccd 7		ccd 0	ccd 1	ccd 2	ccd 3	ccd 6	ccd 7
level 1 events	202265	205221	198166	196856	222106	519843	grade 0 events	99051	100571	96642	96697	107381	119391
rejected events	23073	23402	23497	23398	25560	42305		48%	49%	48%	49%	48%	22%
rejected %	11%	11%	11%	11%	11%	8%	grade 1 events	498	512	494	483	522	302
								0%	0%	0%	0%	0%	0%
							grade 2 events	31584	32208	31197	30521	34125	105382
								15%	15%	15%	15%	15%	20%
							grade 3 events	11451	11496	11095	10872	11717	48307
								5%	5%	5%	5%	5%	9%
							grade 4 events	11273	11442	10947	10880	11943	47198
								5%	5%	5%	5%	5%	9%
							grade 5 events	1652	1693	1565	1592	1891	8623
								0%	0%	0%	0%	0%	1%
							grade 6 events	26084	26441	24788	24488	31472	157665
								12%	12%	12%	12%	14%	30%
							grade 7 events	20672	20858	21438	21323	23055	32975
								10%	10%	10%	10%	10%	6%

2.2 Compared Parameters

Parameter	Planned	Actual
Instrument	ACIS	ACIS
Detector	ACIS-012367	ACIS-012367
Grating	NONE	NONE
Data mode	FAINT	FAINT
Observation mode	SECONDARY	SECONDARY
[deg] Pointing RA	0	9.975421077513829
[deg] Pointing Dec	0	8.015084288021622
[deg] Pointing Roll	0.0	115.5737891933157
[mm] SIM focus pos	-0.782348	-0.6828225247311905
[mm] SIM defocus	0	0.8505141146731063
[mm] SIM translation stage pos	-233.592463	250.466033080201
[mm] SIM translation stage offset	0	-0.01005468664627074
[s] Observation start time (MET)	113798900.098536	113798899.33007
Observation start date	2001-08-10T02:48:20	2001-08-10T02:48:19
[s] Observation end time (MET)	113821987.199445	113821986.43098
Observation end date	2001-08-10T09:13:07	2001-08-10T09:13:06
Read mode	TIMED	TIMED

Parameter	Planned	Actual
Obspar format version number	7	7
Obspar file type	PREDICTED	ACTUAL
Obspar update status	NONE	UPDATED
On-chip summing requested	N	N
Subarray requested	NONE	NONE
Alternating exposures requested	N	N
[s] Primary exposure time	3.2	3.2

2.3 Star Slots

2.4 FID Slots

A Summary

A.1 Status

V&V Scientist	Joy Nichols
V&V Date (YYYY-MM-DD)	2013.01.09
V&V Edition	1
V&V Disposition and Status	OK
V&V Charge Time	7.6270488756746

A.2 Comments