

V&V Reference Report

L2 ASCDS Version : 8.5.1.1

Observation 6138 - L2 Version 3
Chandra X-Ray Center

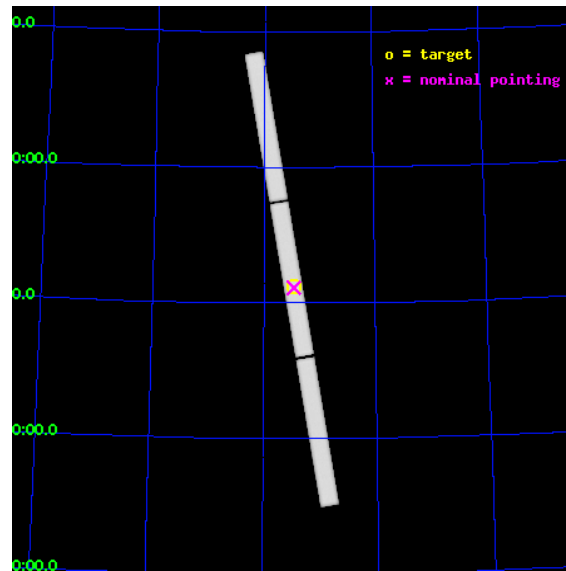
L2 Processing Date : Dec 31 2012

Contents

1	Front	2
2	OBI	3
2.1	OBI	3
2.1.1	Images	3
2.1.2	Parameters	4
2.1.3	Events	4
2.2	Compared Parameters	5
2.3	Aspect	6
2.4	Star Slots	9
2.4.1	Slot 3	9
2.4.2	Slot 4	10
2.4.3	Slot 5	11
2.4.4	Slot 6	12
2.4.5	Slot 7	13
2.5	FID Slots	14
2.5.1	Slot 0	14
2.5.2	Slot 1	15
2.5.3	Slot 2	16
3	Gratings	17
3.1	LETG Arm	17
A	Summary	19
A.1	Status	19
A.2	Comments	19

1 Front

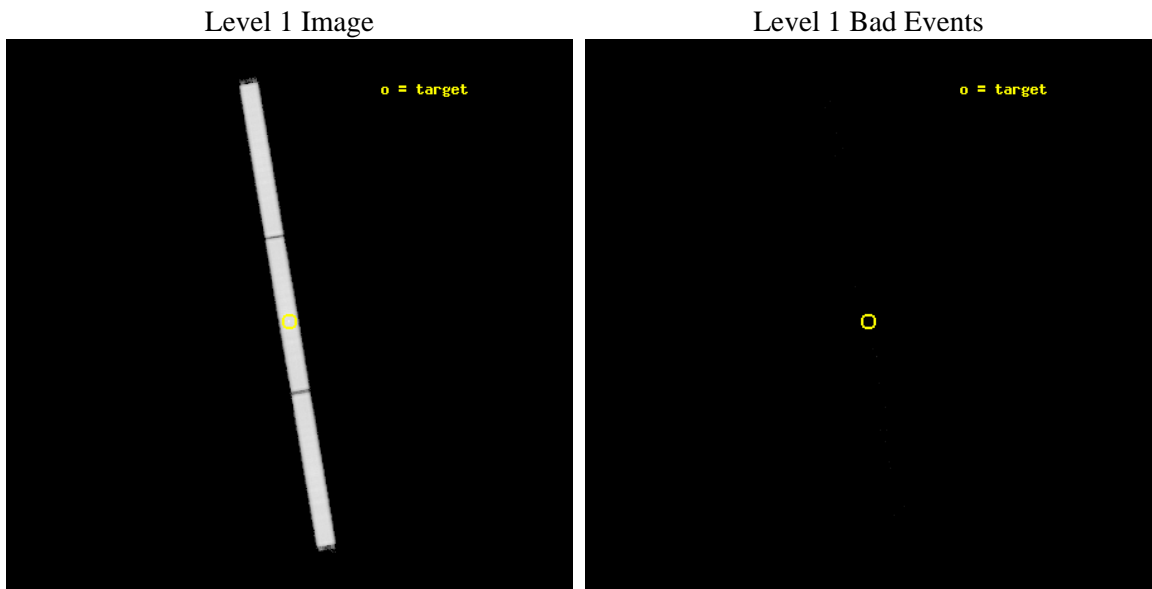
seq_num	200330	Sequence number
obs_id	6138	Observation id
title	The location and spatial structure of the X-ray emitting plasma in the magnetically confined environment of beta Cep	Proposal title
observer	Dr Coralie Neiner	Principal investigator
object	beta Cep	Source name
ra_targ	322.165	Observer's specified target RA [deg]
dec_targ	70.560717	Observer's specified target Dec [deg]
ra_nom	322.16227417617	Nominal RA [deg]
dec_nom	70.556059642411	Nominal Dec [deg]
roll_nom	260.26991027587	Nominal Roll [deg]
revision	3	Processing version of data
ontime	29540.757612228	[s]
livetime	29193.366528155	Ontime multiplied by DTCOR
l2events	1884948	Number of level 2 events



2 OBI

2.1 OBI

2.1.1 Images



2.1.2 Parameters

obi_num	0	Obi number	sched_exp_time	28977.366000	[s] Scheduled observation exposure time
ascdsver	8.5.1.1	Processing system revision	ontime	29540.757612228	[s]
caldsver	4.5.5	 	l1events	2577505	Number of level 1 events
date	2012-12-31T09:57:06	Date and time of file creation			
revision	3	Processing version of data			

2.1.3 Events

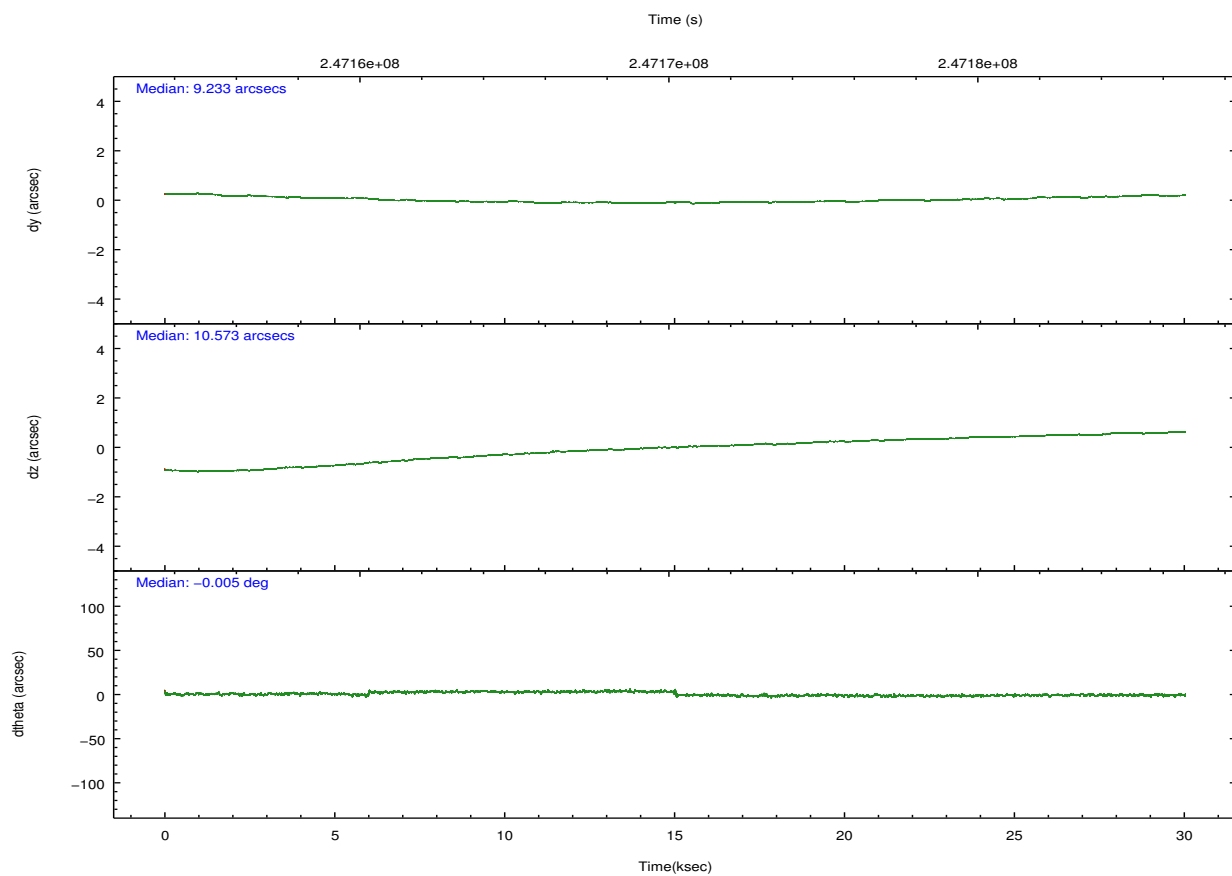
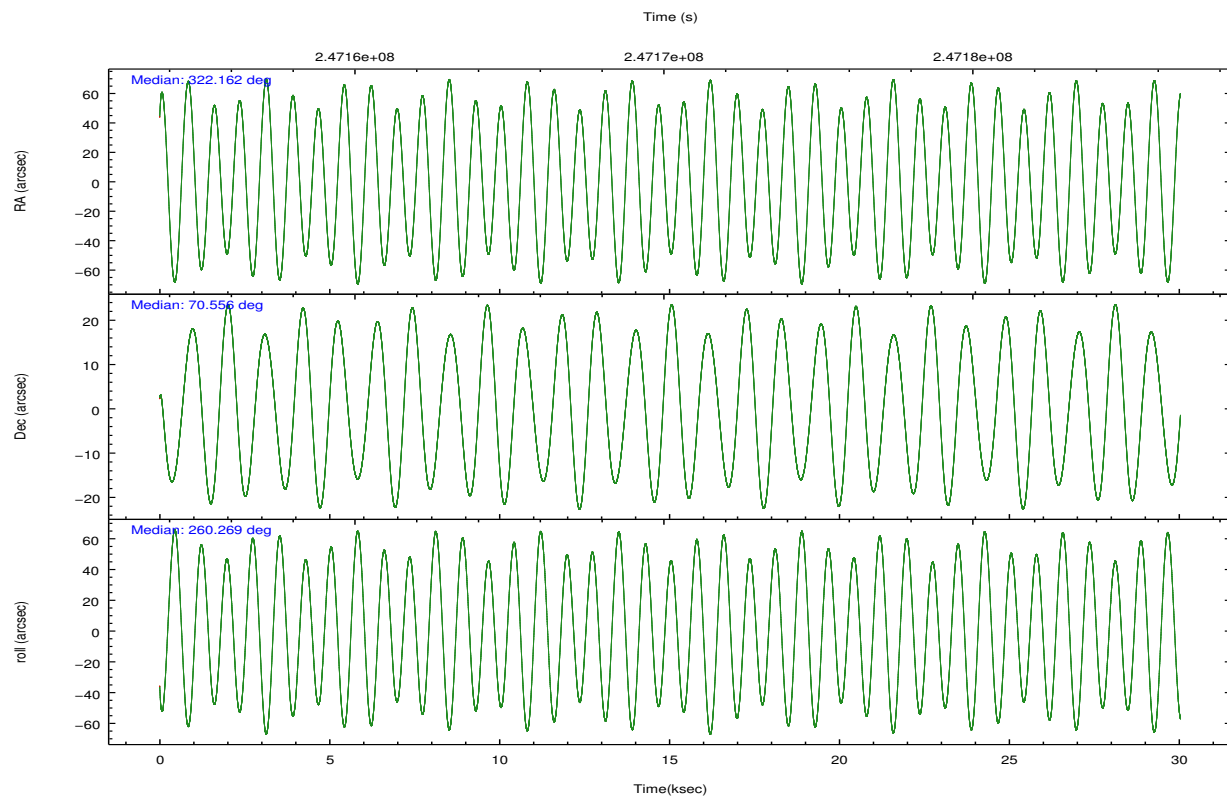
Level 1 Events

	segment 1	segment 2	segment 3
level 1 events	870043	845292	862170
rejected events	22030	21022	22193
rejected %	2%	2%	2%

2.2 Compared Parameters

Parameter	Planned	Actual	Parameter	Planned	Actual
Instrument	HRC	HRC	Obspar format version number	7	7
Detector	HRC-S	HRC-S	Obspar file type	PREDICTED	ACTUAL
Grating	LETG	LETG	Obspar update status	NONE	UPDATED
Data mode	OBSERVING	OBSERVING			
Observation mode	POINTING	POINTING			
[deg] Pointing RA	322.128446	322.1622741761712			
[deg] Pointing Dec	70.582433	70.55605964241077			
[deg] Pointing Roll	260.234471	260.2699102758694			
[mm] SIM focus pos	-1.429586	-1.428180813131781			
[mm] SIM defocus	0.1037507710433287	0.1051558262725154			
[mm] SIM translation stage pos	250.455976	250.466033080201			
[mm] SIM translation stage offset	0	-0.01005468664627074			
Phase constraints	Y	Y			
[d] Phase period	12.000750	12.000750			
[d] Phase epoch (MJD)	53962.310000	53962.310000			
Phase start	0.216245	0.216245			
Phase end	0.283755	0.283755			
Phase start error	0.020000	0.020000			
Phase end error	0.020000	0.020000			
[s] Observation start time (MET)	247155342.184000	247154394.47069			
Observation start date	2005-10-31T14:14:38	2005-10-31T13:59:54			
[s] Observation end time (MET)	247184319.184000	247185835.32214			
Observation end date	2005-10-31T22:17:35	2005-10-31T22:43:55			

2.3 Aspect

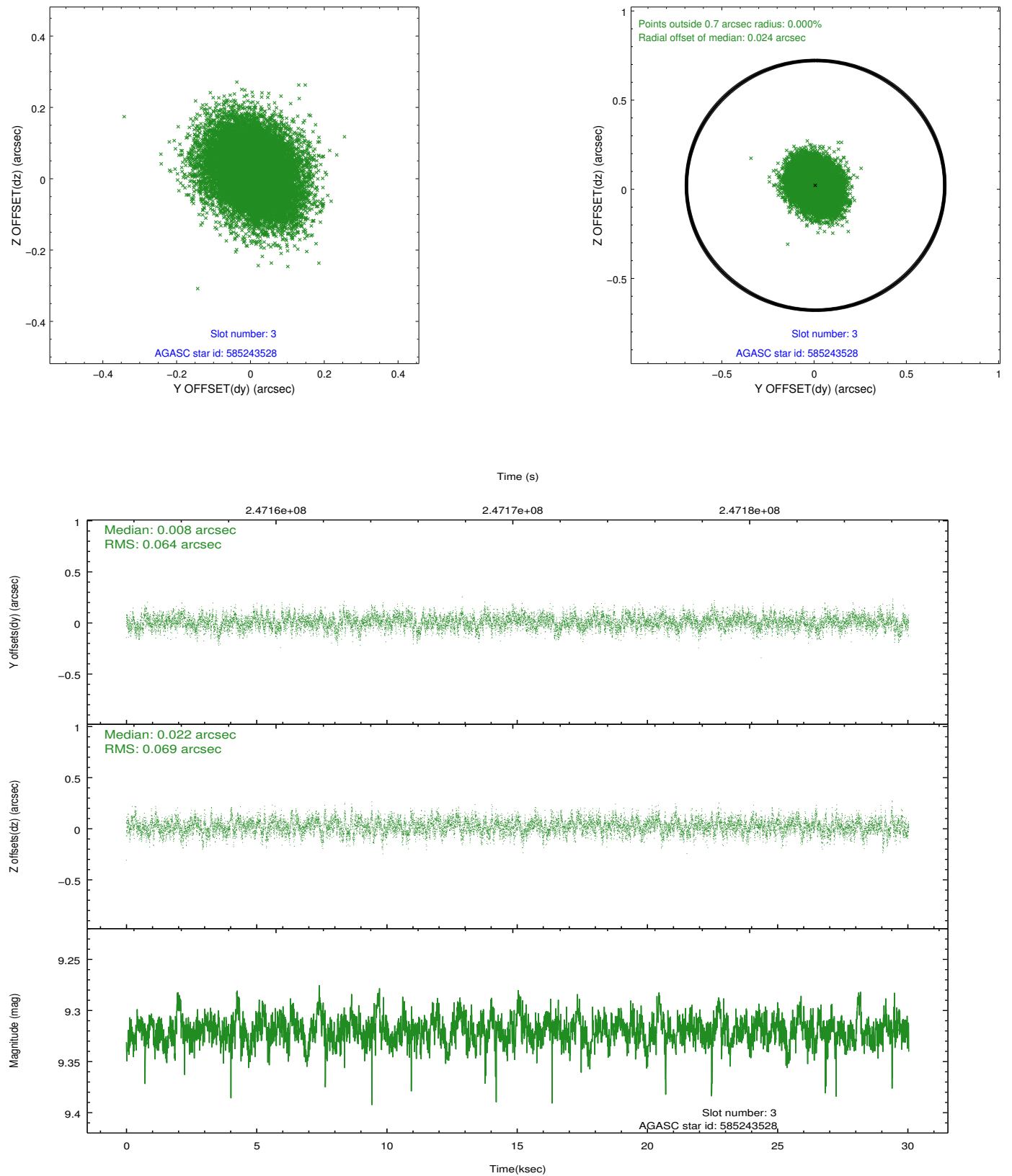


Slot Statistics

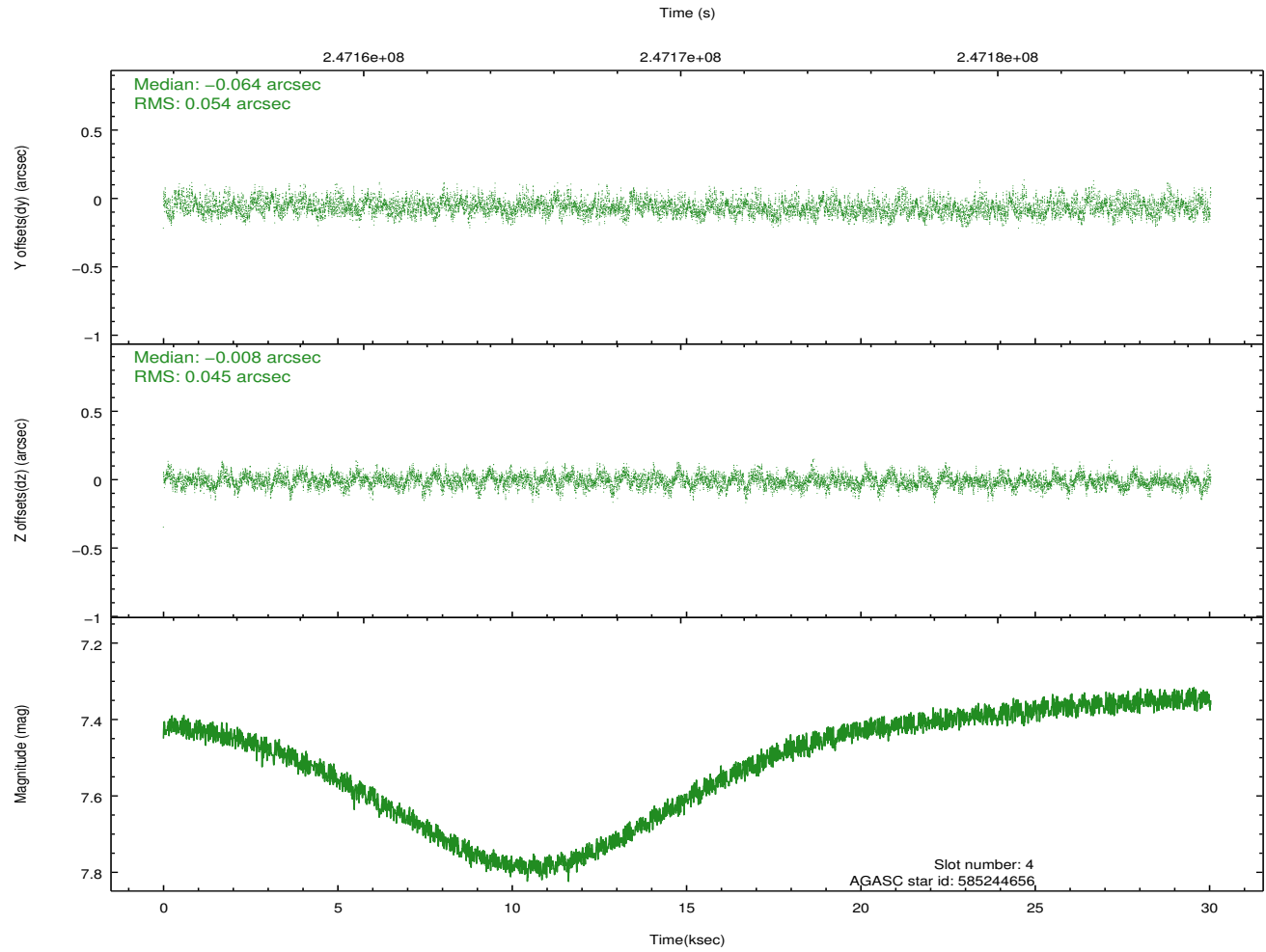
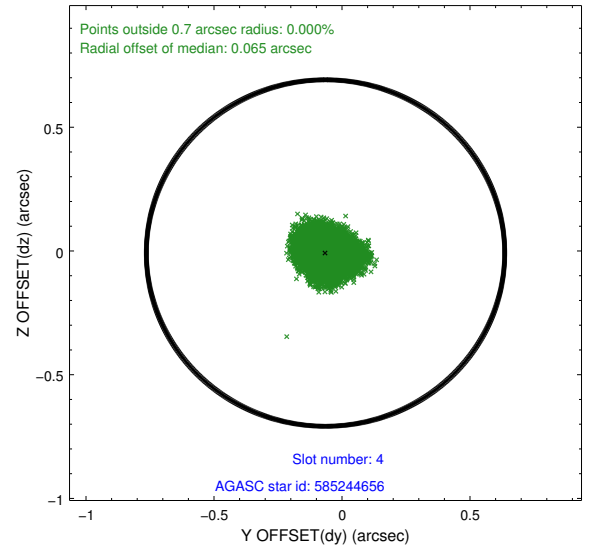
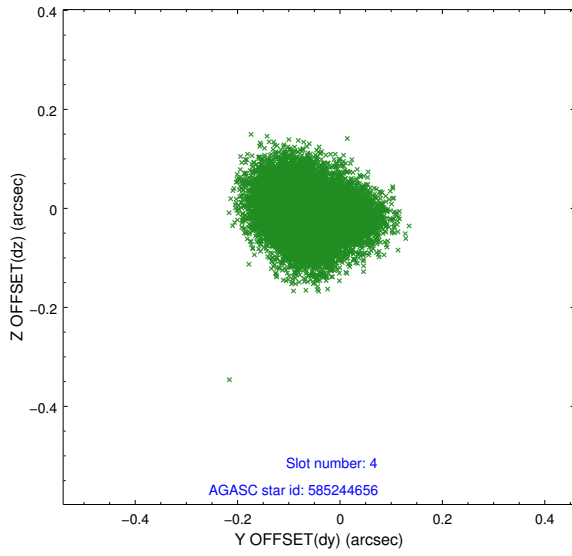
slot	status	id	mag	n_pts	med_dy	med_dz	dr1	dr2	ra	dec	mean_y	mean_z
0	FID	HRC-S-1	7.02	7327	0.099	-0.131	0.013	0.021	0.000000	0.000000	-1163.48	-459.19
1	FID	HRC-S-2	7.01	7328	0.099	-0.154	0.030	0.044	0.000000	0.000000	1236.04	-451.85
2	FID	HRC-S-4	6.99	7327	0.202	-0.019	0.029	0.041	0.000000	0.000000	1235.02	573.00
3	GUIDE	585243528	9.32	14646	0.008	0.022	0.100	0.164	323.001841	70.190189	1203.78	1288.66
4	GUIDE	585244656	7.48	14653	-0.064	-0.008	0.075	0.120	322.746463	70.823219	-981.85	572.72
5	GUIDE	585245544	7.37	14649	-0.028	-0.061	0.068	0.110	321.319997	70.477535	530.45	-895.24
6	GUIDE	585249712	9.18	14646	0.102	0.022	0.097	0.166	322.943679	70.596904	-222.90	950.75
7	GUIDE	585244168	9.02	14650	-0.024	0.030	0.075	0.123	323.050612	69.955180	2023.83	1503.23

2.4 Star Slots

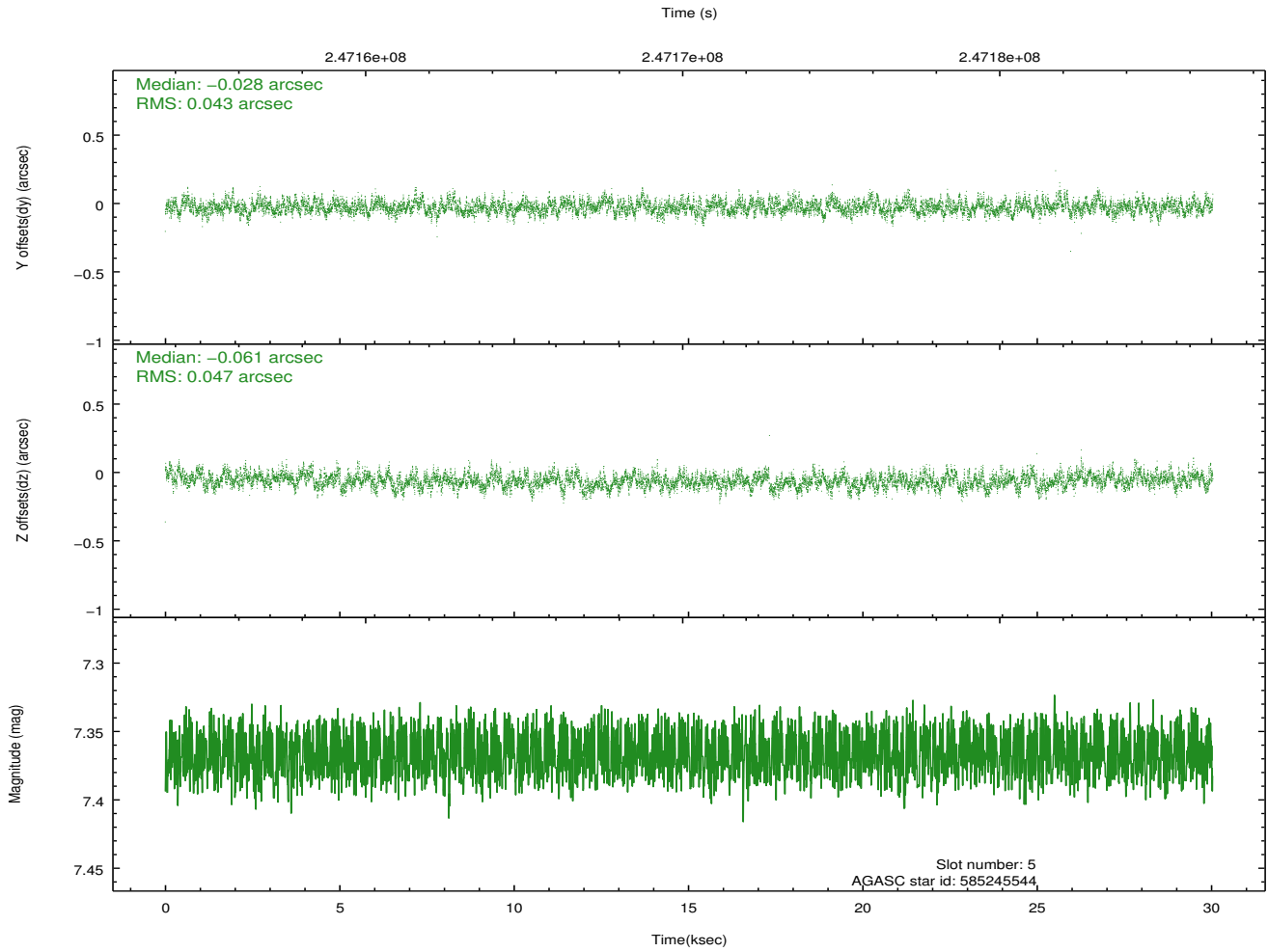
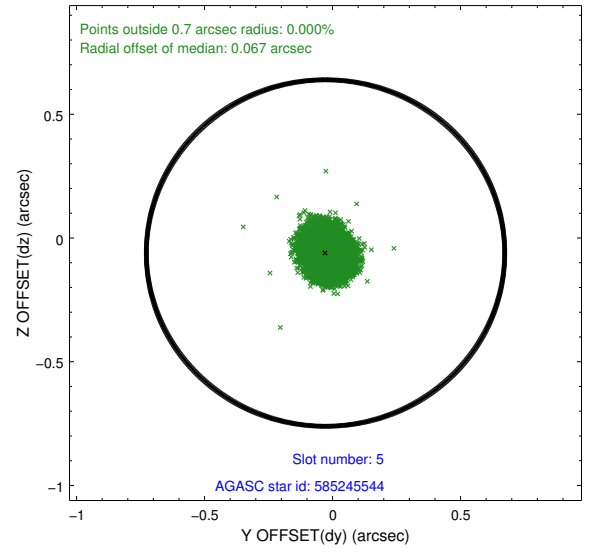
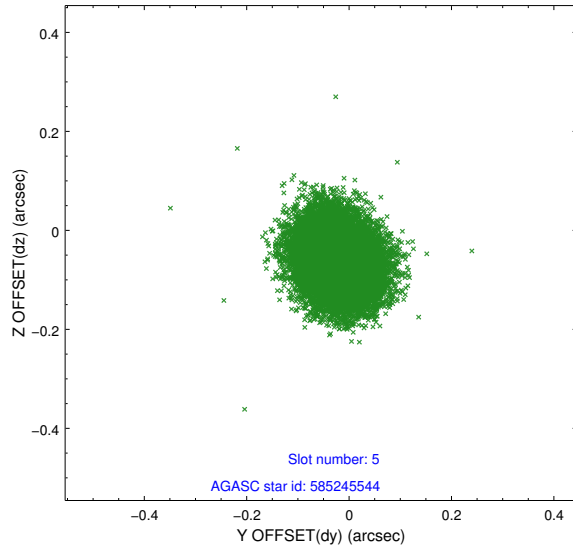
2.4.1 Slot 3



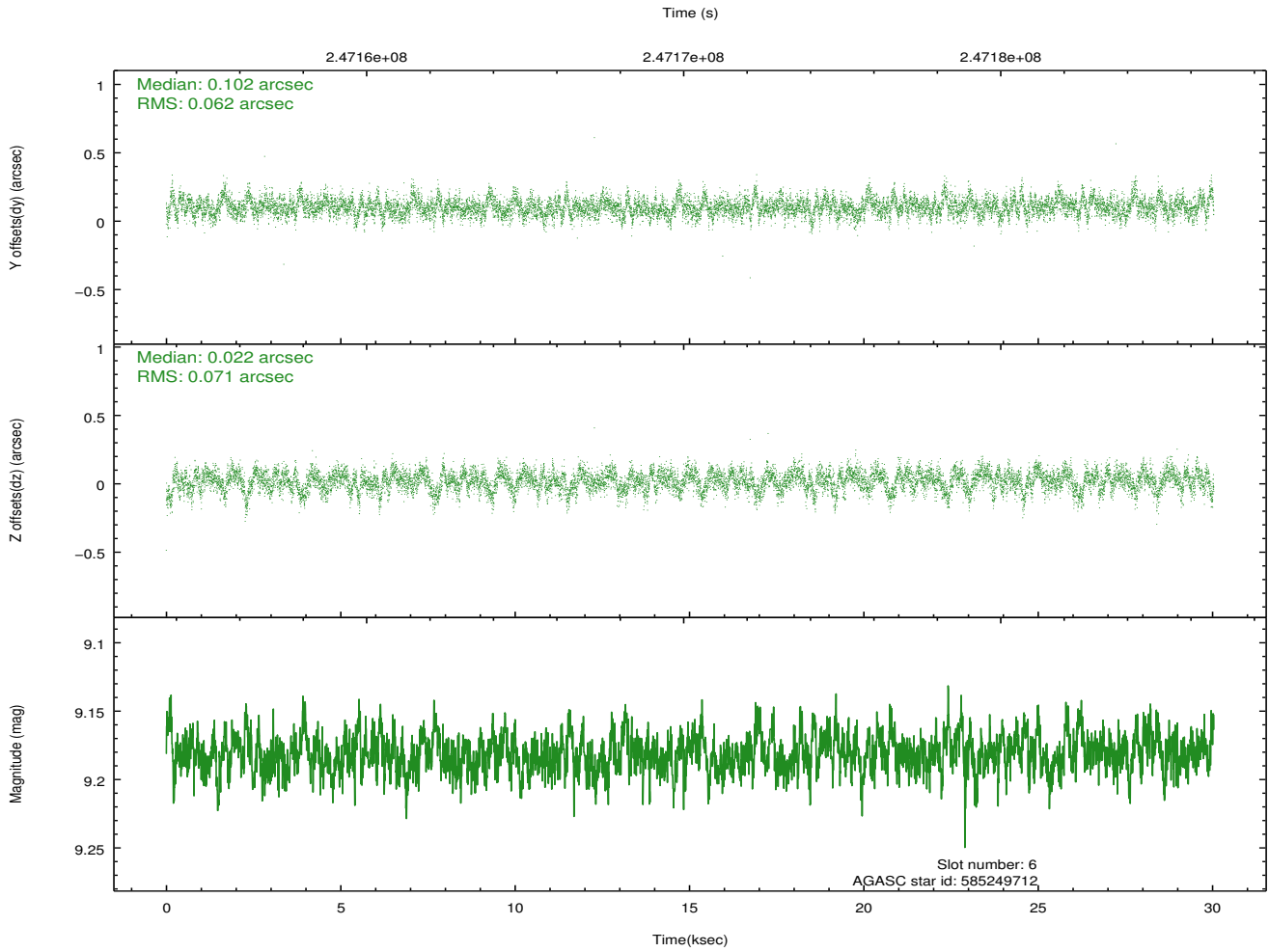
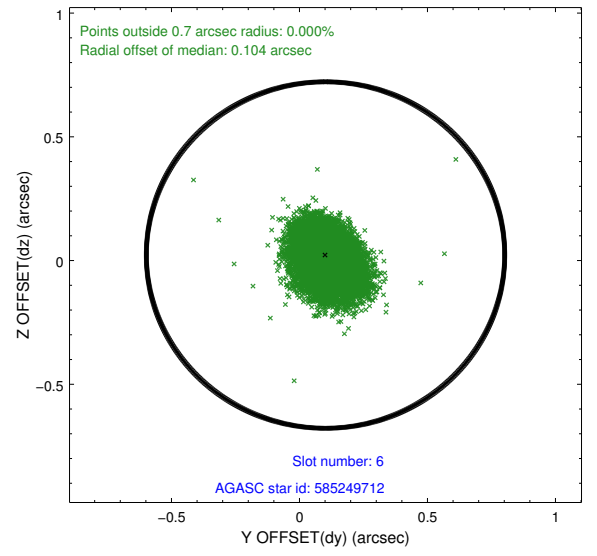
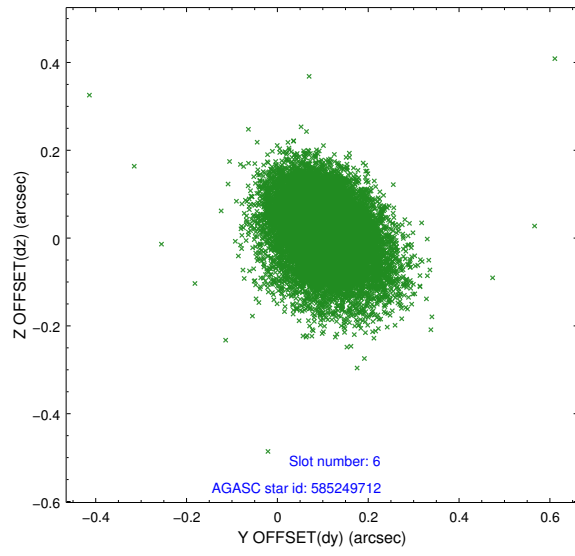
2.4.2 Slot 4



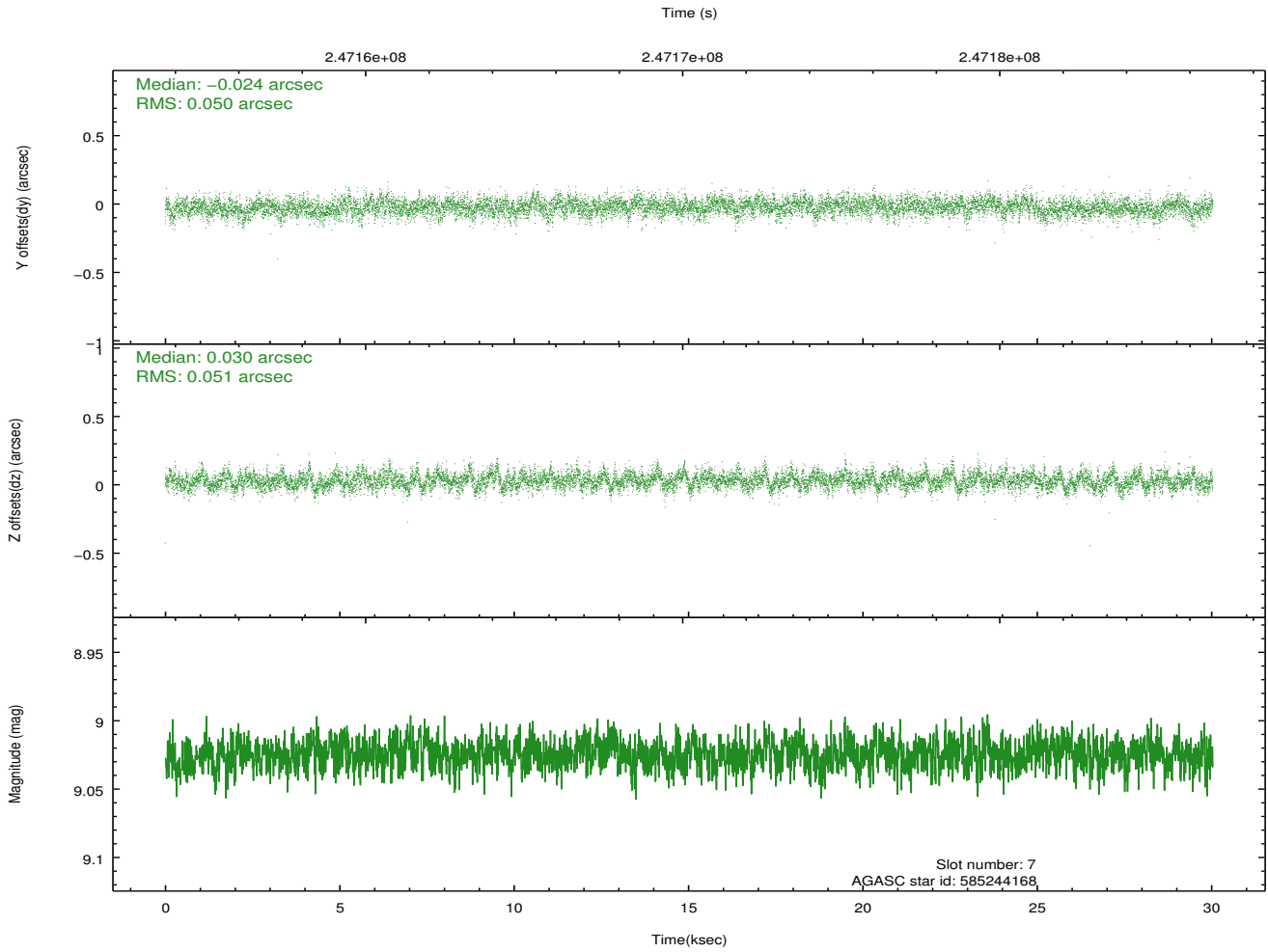
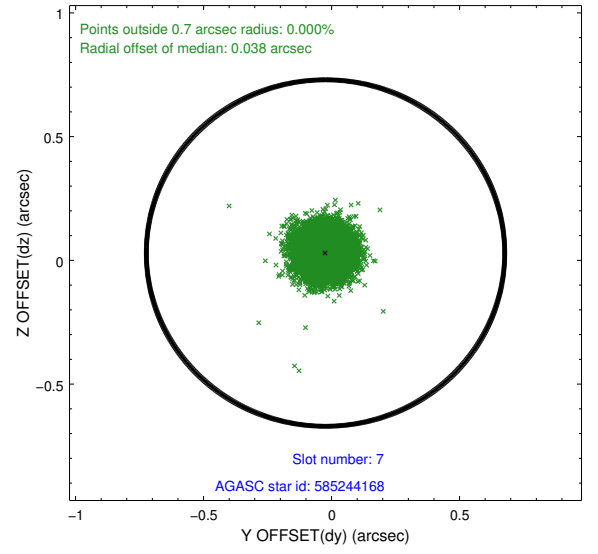
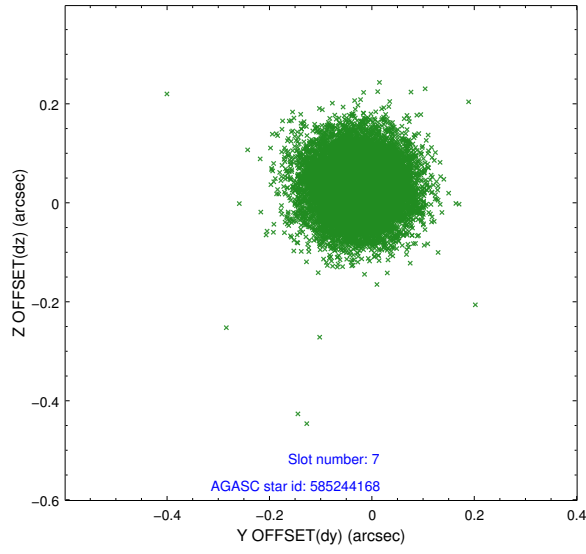
2.4.3 Slot 5



2.4.4 Slot 6

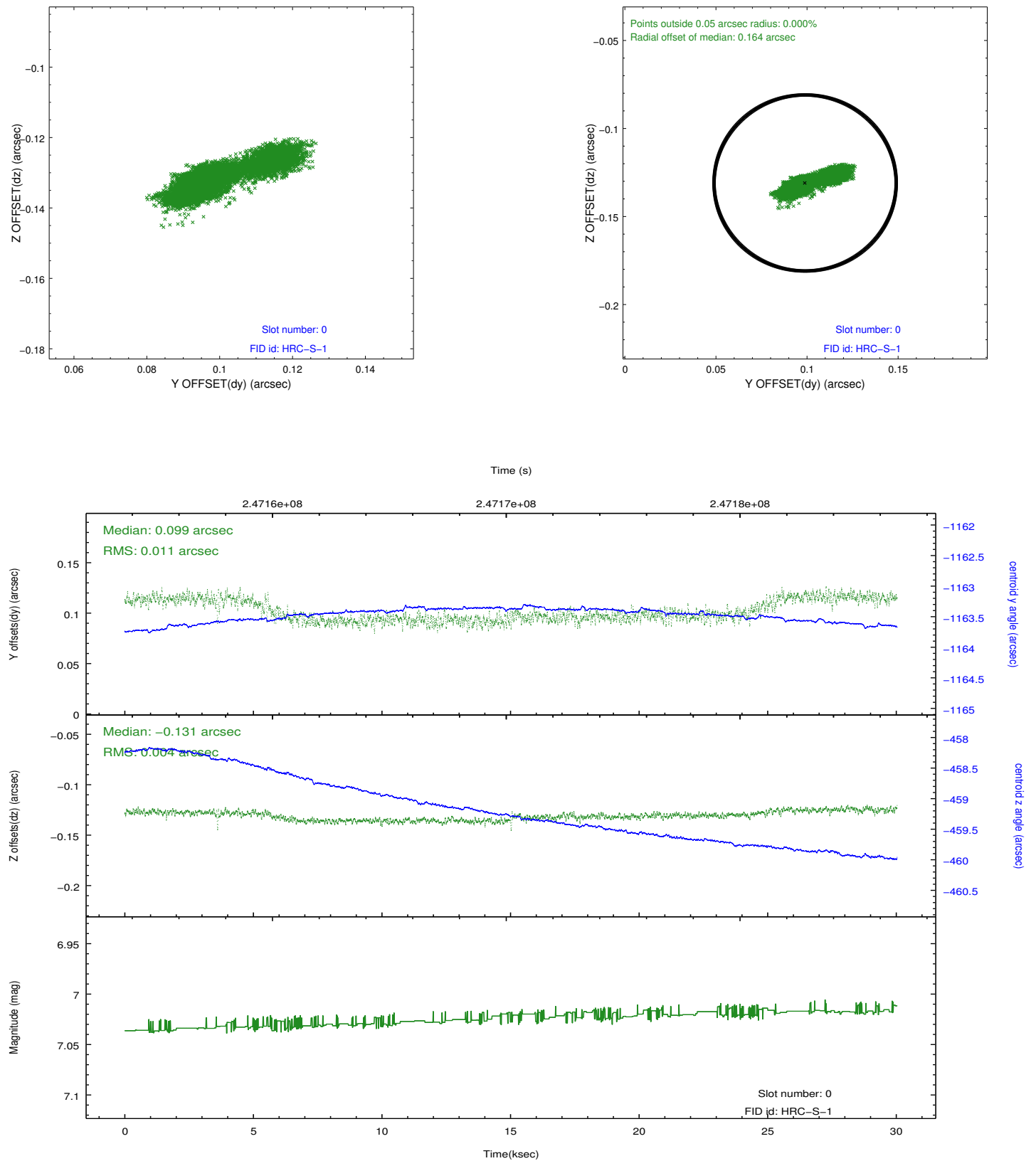


2.4.5 Slot 7

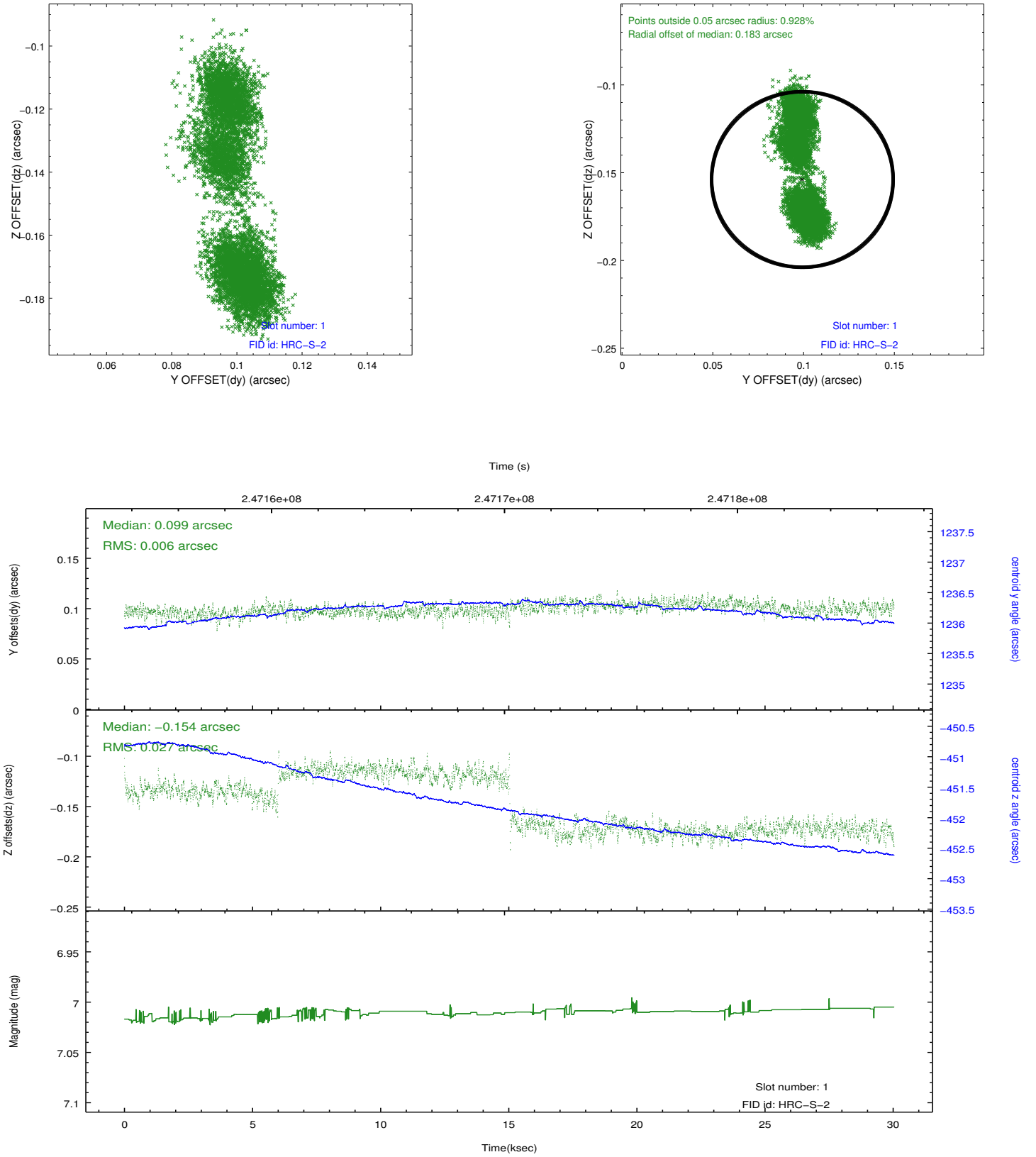


2.5 FID Slots

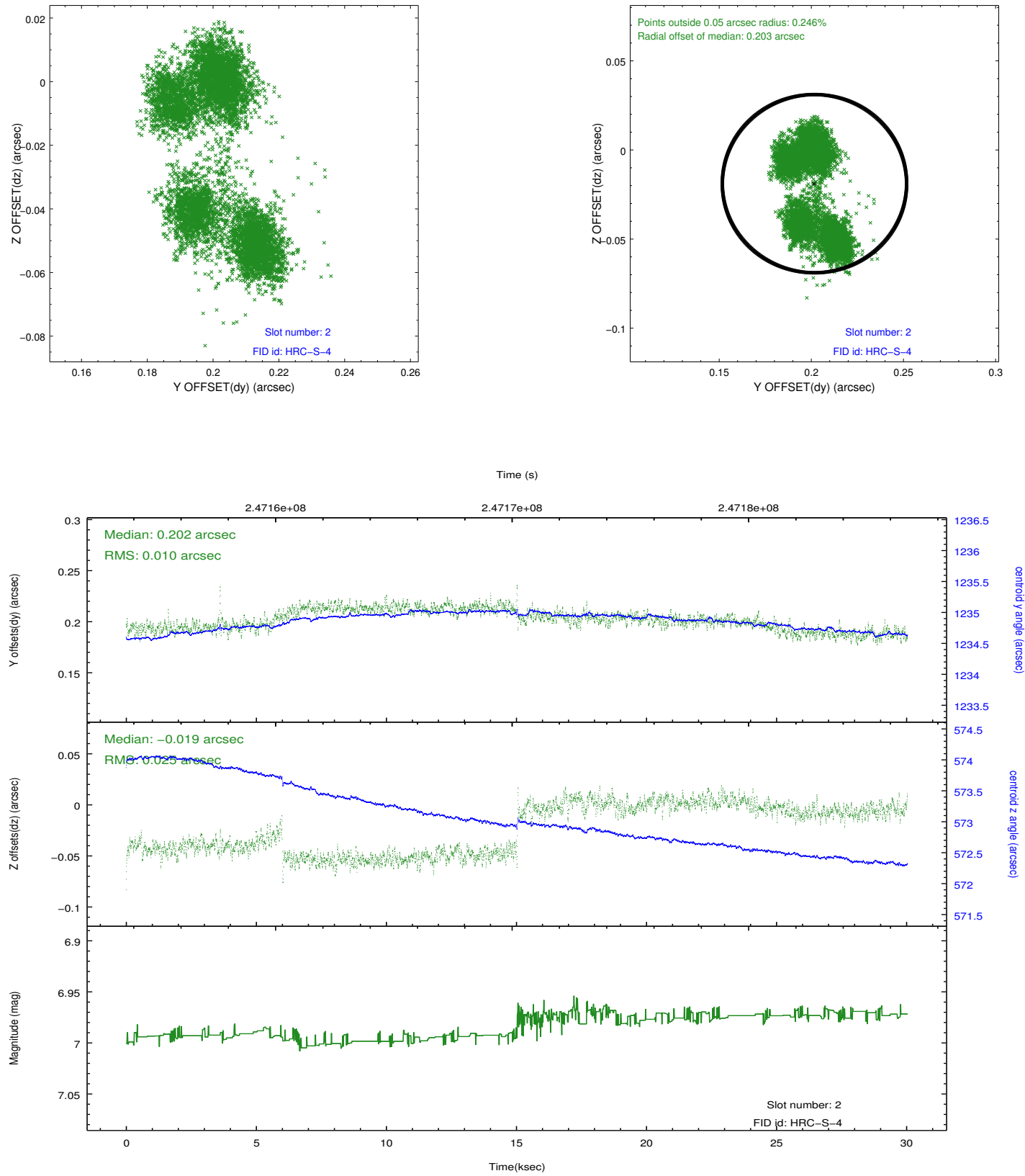
2.5.1 Slot 0



2.5.2 Slot 1

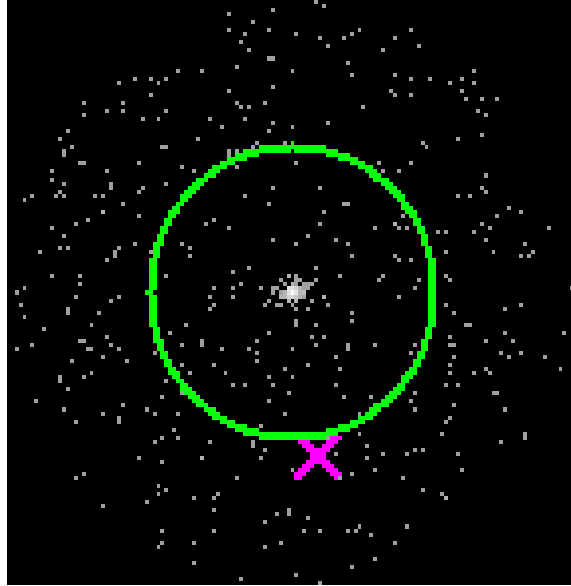


2.5.3 Slot 2

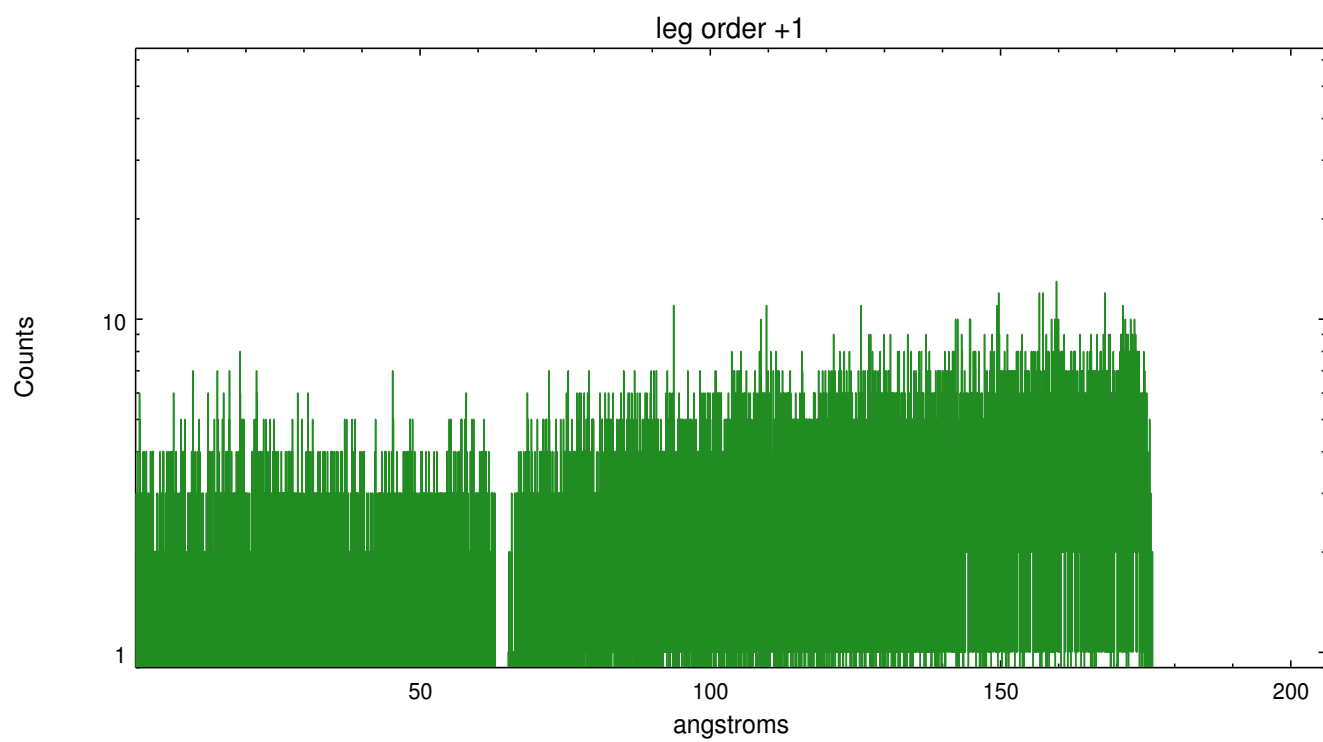
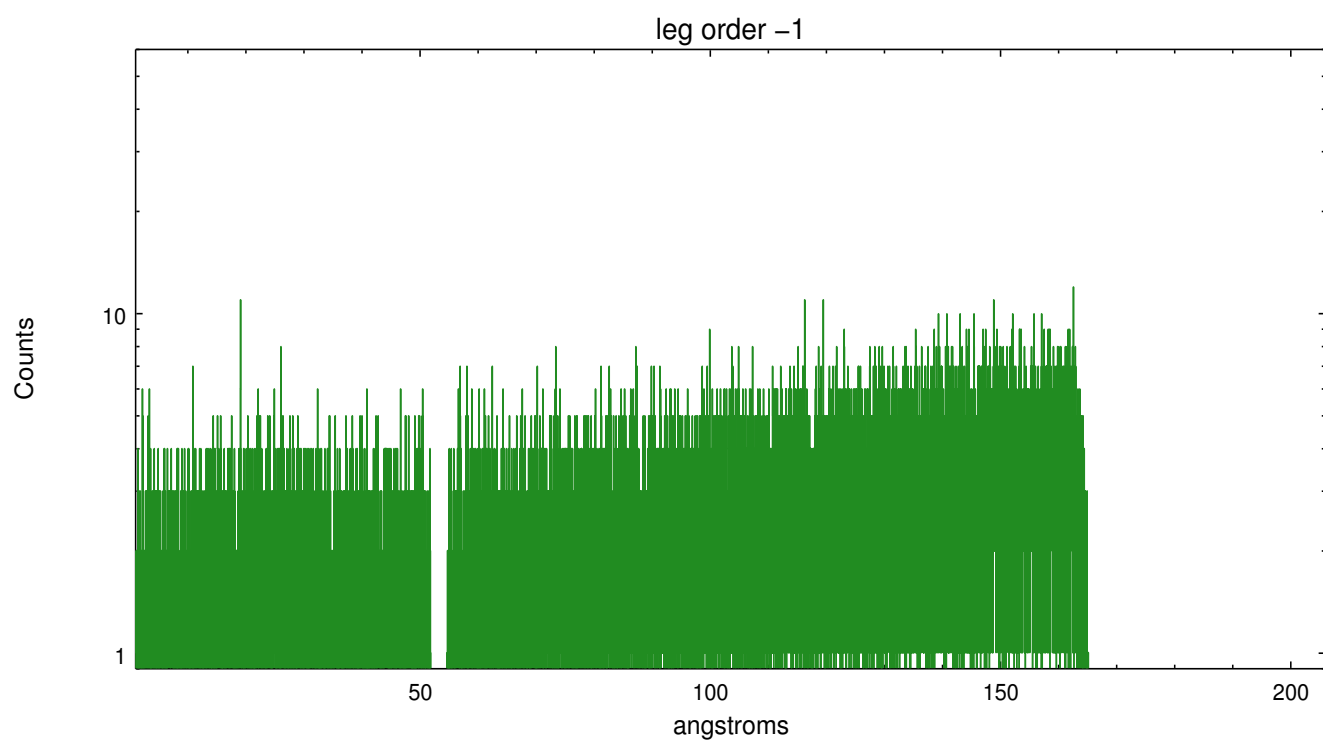


3 Gratings

3.1 LETG Arm



LETG Zero Order



A Summary

A.1 Status

V&V Scientist	Joy Nichols
V&V Date (YYYY-MM-DD)	2013.01.24
V&V Edition	1
V&V Disposition and Status	OK
V&V Charge Time	29.54075

A.2 Comments