

V&V Reference Report

L2 ASCDS Version : 8.5

Observation 6128 - L2 Version 3
Chandra X-Ray Center

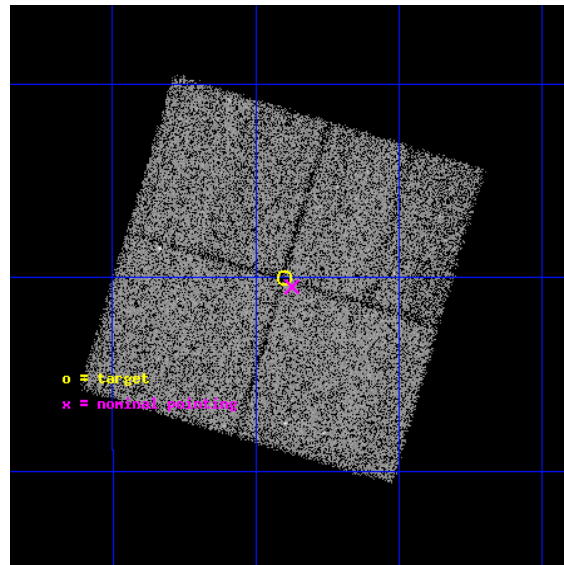
L2 Processing Date : Dec 9 2012

Contents

1	Front	2
2	OBI	3
2.1	OBI	3
2.1.1	Images	3
2.1.2	Bias	3
2.1.3	Parameters	4
2.1.4	Events	4
2.2	Compared Parameters	5
2.3	Aspect	6
2.4	Star Slots	9
2.4.1	Slot 3	9
2.4.2	Slot 4	10
2.4.3	Slot 5	11
2.4.4	Slot 6	12
2.4.5	Slot 7	13
2.5	FID Slots	14
2.5.1	Slot 0	14
2.5.2	Slot 1	15
2.5.3	Slot 2	16
A	Summary	17
A.1	Status	17
A.2	Comments	17

1 Front

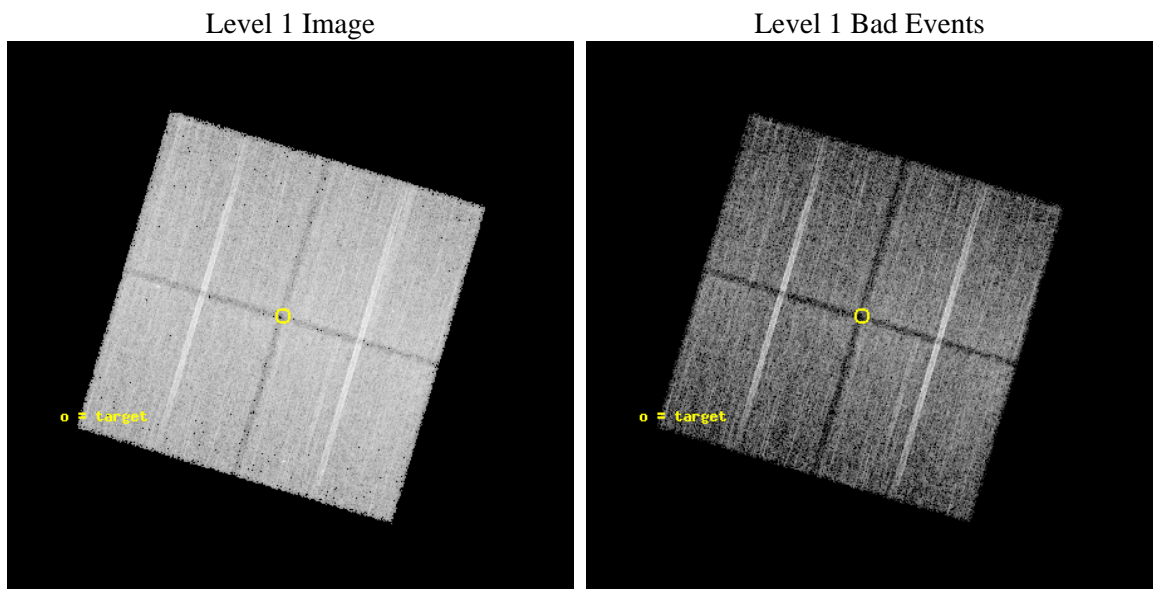
seq_num	500590	Sequence number
obs_id	6128	Observation id
title	GRB040912: An Unusual Event Exhibiting Strong Spectral Evolution from a GRB to an XRF	Proposal title
observer	Dr. george Ricker	Principal investigator
object	GRB040912	Source name
dtcycle	0	
cycle	P	events from which exps? Prim/Second/Both
ra_targ	359.225	Observer's specified target RA [deg]
dec_targ	-1.000556	Observer's specified target Dec [deg]
ra_nom	359.21868917911	Nominal RA [deg]
dec_nom	-1.0081068833643	Nominal Dec [deg]
roll_nom	106.7226060564	Nominal Roll [deg]
revision	3	Processing version of data
ontime	18168.936004192	Sum of GTIs [s]
livetime	17931.545479521	Livetime [s]
ontime0	18181.499965012	Sum of GTIs [s]
ontime1	18181.499965012	Sum of GTIs [s]
ontime2	18181.499965012	Sum of GTIs [s]
ontime3	18168.936004192	Sum of GTIs [s]
l2events	89304	Number of level 2 events



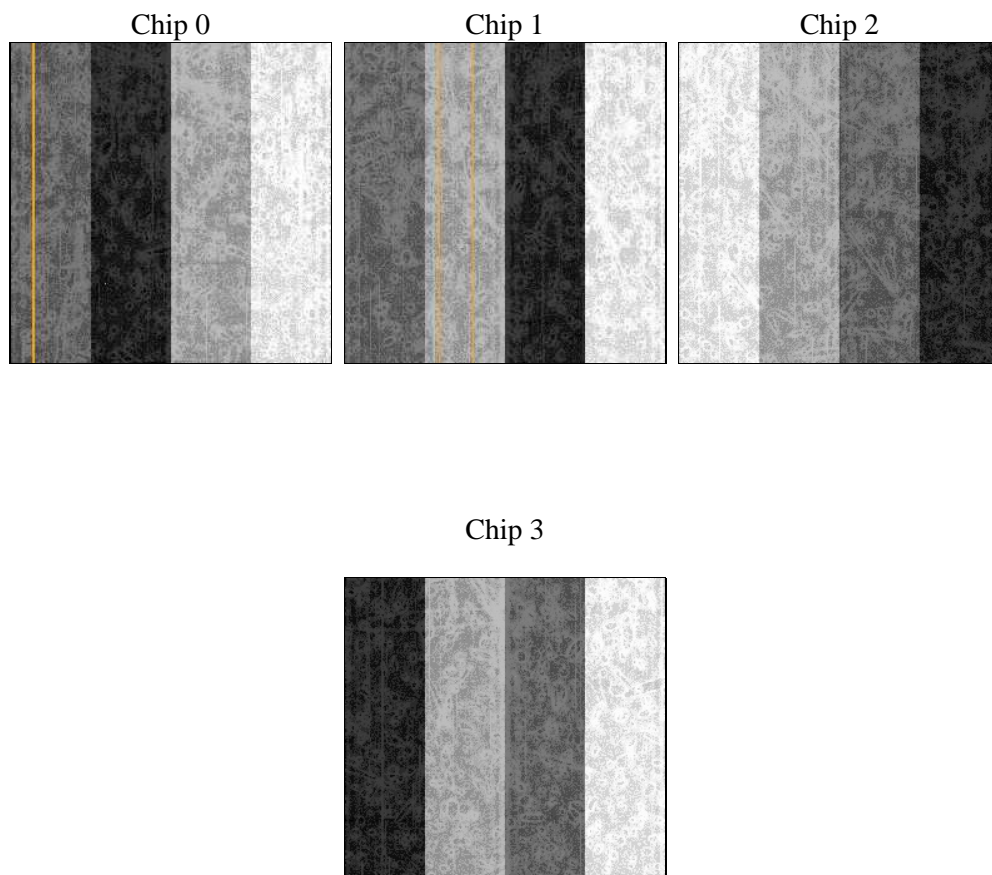
2 OBI

2.1 OBI

2.1.1 Images



2.1.2 Bias



2.1.3 Parameters

obi_num	0	Obi number	sched_exp_time	18000.000000	[s] Scheduled observation exposure time
ascdsver	8.5	Processing system revision	ontime	18168.936004192	Sum of GTIs [s]
caldsver	4.5.4	 	ontime0	18181.499965012	Sum of GTIs [s]
date	2012-12-09T01:09:07	Date and time of file creation	ontime1	18181.499965012	Sum of GTIs [s]
revision	3	Processing version of data	ontime2	18181.499965012	Sum of GTIs [s]
			ontime3	18168.936004192	Sum of GTIs [s]
			l1events	683960	Number of level 1 events

2.1.4 Events

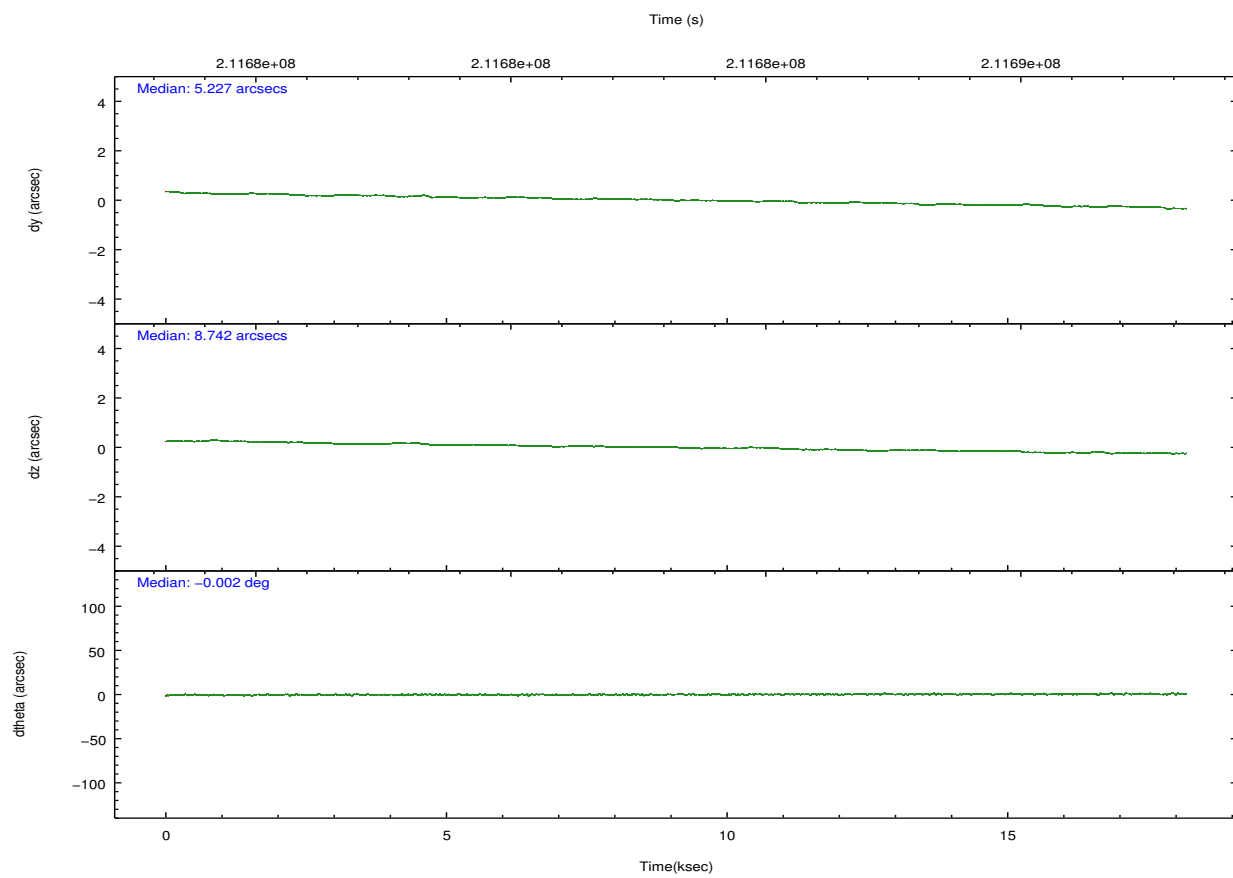
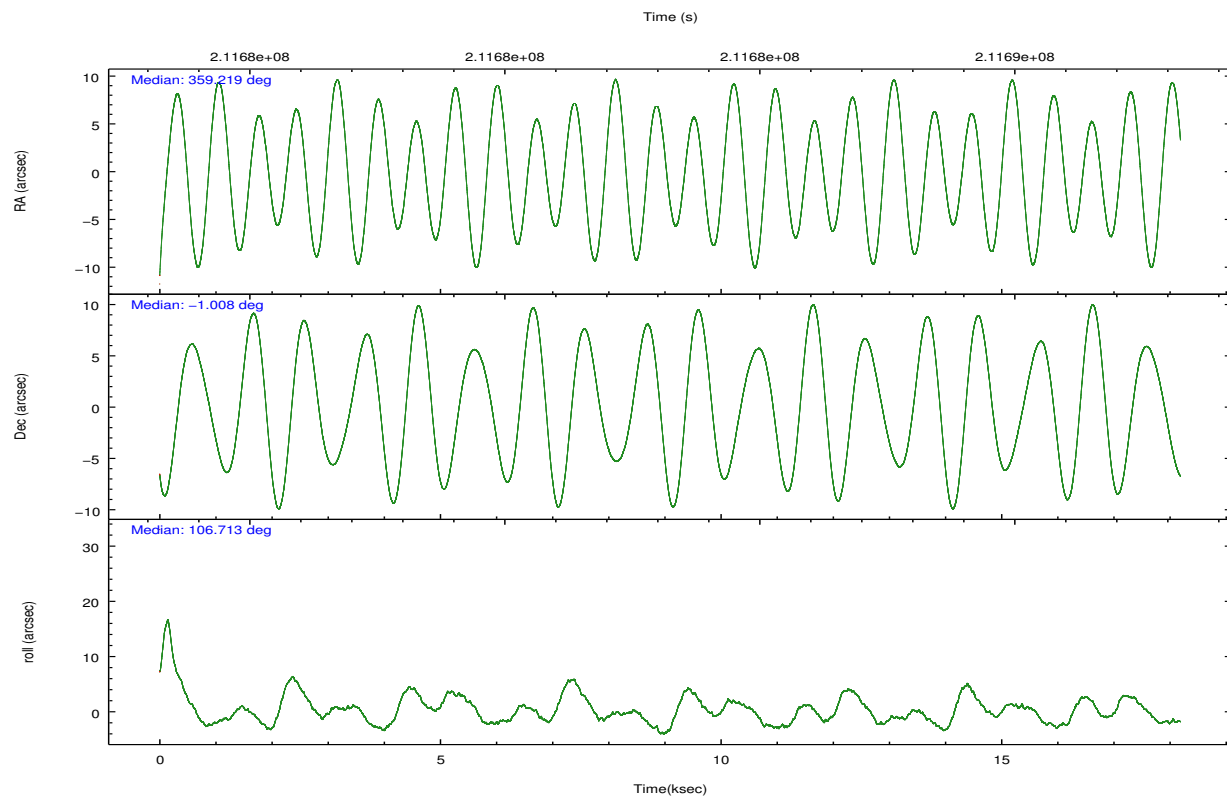
	ccd 0	ccd 1	ccd 2	ccd 3
level 1 events	159598	164039	183933	176390
rejected events	131717	136563	155171	151129
rejected %	82%	83%	84%	85%

	ccd 0	ccd 1	ccd 2	ccd 3
grade 0 events	12192	10267	13684	10609
	7%	6%	7%	6%
grade 1 events	109	95	120	91
	0%	0%	0%	0%
grade 2 events	8501	9056	7775	7536
	5%	5%	4%	4%
grade 3 events	1841	1944	1702	1680
	1%	1%	0%	0%
grade 4 events	1833	1918	2393	1807
	1%	1%	1%	1%
grade 5 events	5634	5995	5434	6179
	3%	3%	2%	3%
grade 6 events	5795	6577	5571	5753
	3%	4%	3%	3%
grade 7 events	123693	128187	147254	142735
	77%	78%	80%	80%

2.2 Compared Parameters

Parameter	Planned	Actual	Parameter	Planned	Actual
Instrument	ACIS	ACIS	Obspar format version number	7	7
Detector	ACIS-0123	ACIS-0123	Obspar file type	PREDICTED	ACTUAL
Grating	NONE	NONE	Obspar update status	NONE	UPDATED
Data mode	VFAINT	VFAINT	Number of optional ACIS chips dropped	0	0
Observation mode	POINTING	POINTING	On-chip summing requested	N	N
[deg] Pointing RA	359.238690	359.2186891791068	Subarray requested	NONE	NONE
[deg] Pointing Dec	-1.026801	-1.008106883364316	Alternating exposures requested	N	N
[deg] Pointing Roll	106.514271	106.7226060563991	[s] Primary exposure time	0.000000	3.1
[mm] SIM focus pos	-0.782348	-0.7809083437167272			
[mm] SIM defocus	0	0.001439871863259334			
[mm] SIM translation stage pos	-233.592463	-233.5874344608287			
[mm] SIM translation stage offset	0	-0.005018542100998502			
[s] Observation start time (MET)	211674330.184000	211672661.78453			
Observation start date	2004-09-15T22:24:26	2004-09-15T21:57:41			
[s] Observation end time (MET)	211692330.184000	211693727.07297			
Observation end date	2004-09-16T03:24:26	2004-09-16T03:48:47			
Read mode	TIMED	TIMED			

2.3 Aspect

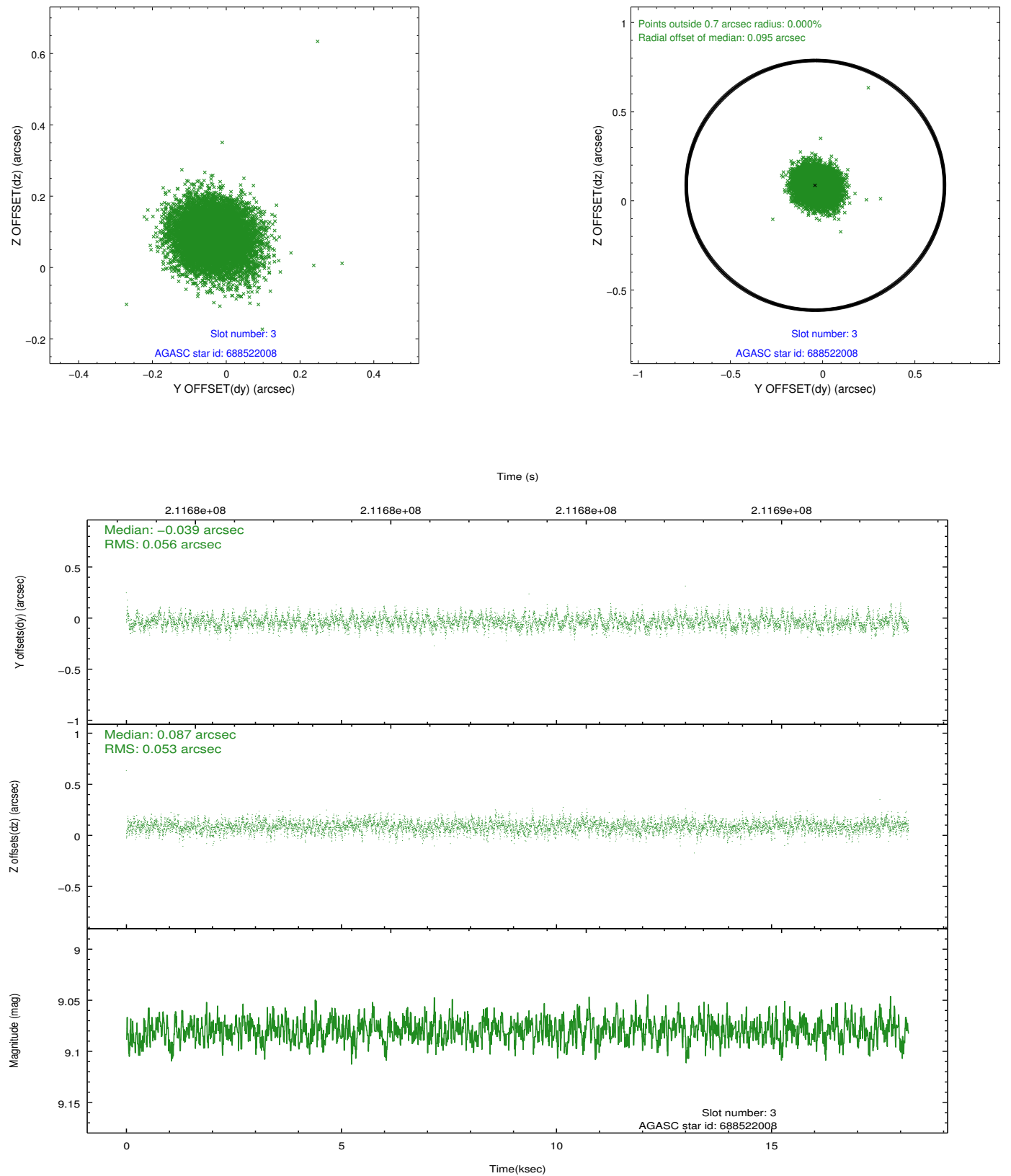


Slot Statistics

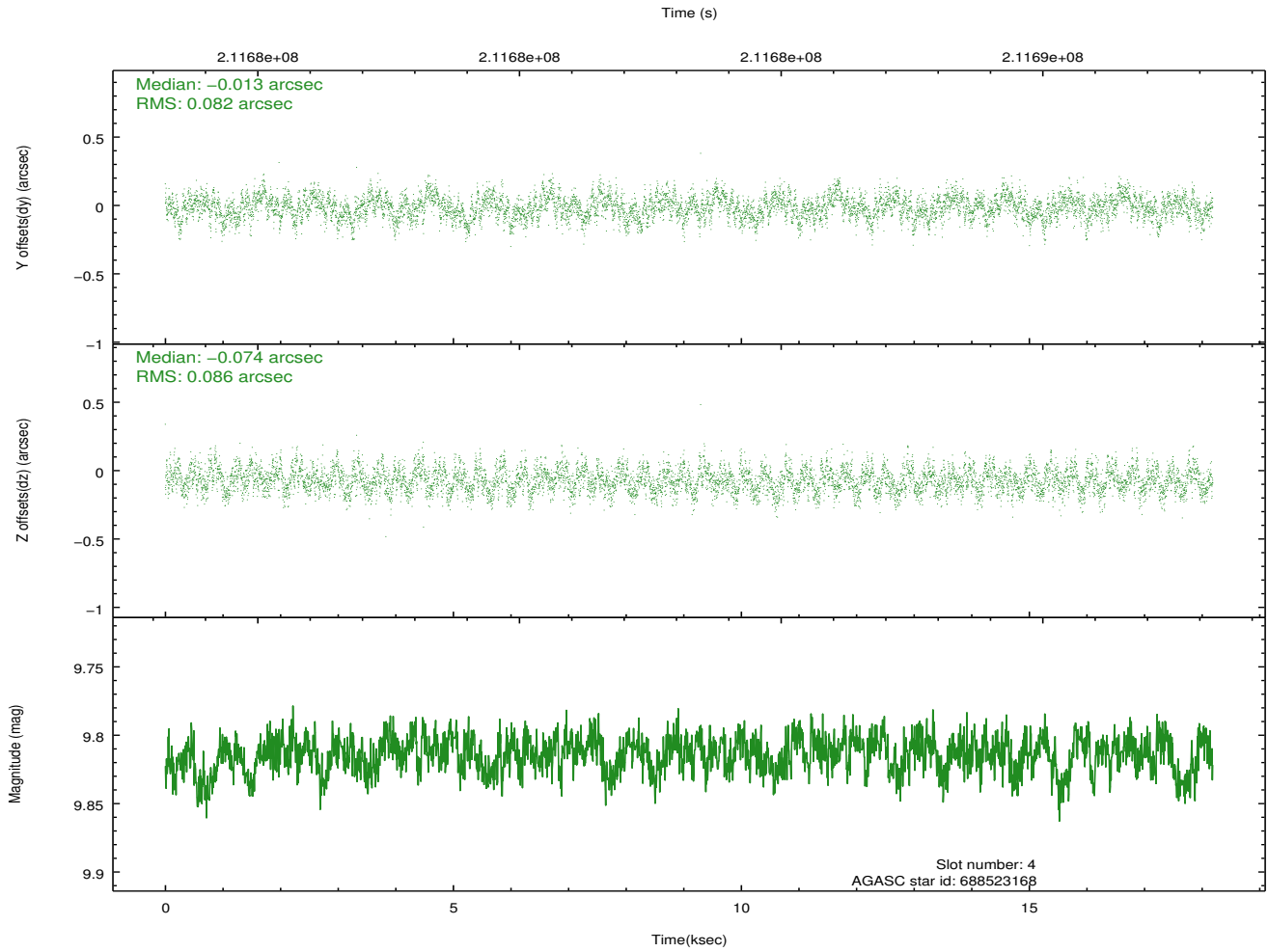
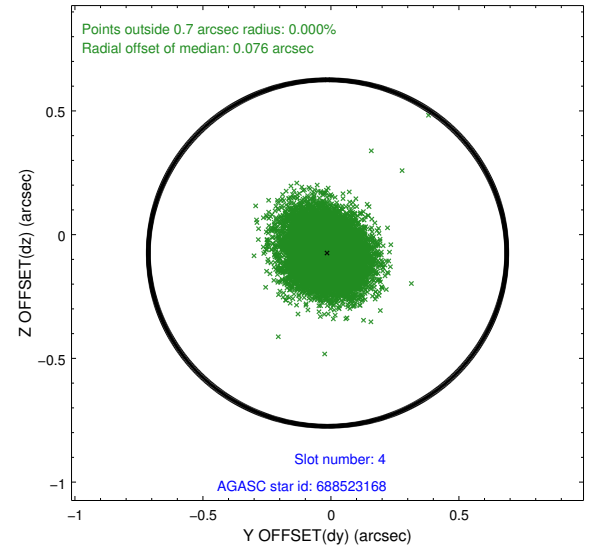
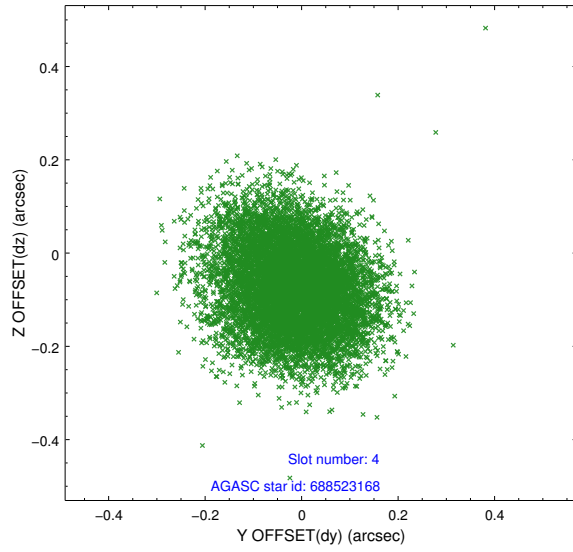
slot	status	id	mag	n_pts	med_dy	med_dz	dr1	dr2	ra	dec	mean_y	mean_z
0	FID	ACIS-I-1	7.24	4437	0.017	0.037	0.008	0.013	0.000000	0.000000	934.53	-832.13
1	FID	ACIS-I-5	7.23	4437	-0.169	0.042	0.008	0.013	0.000000	0.000000	-1813.66	1065.23
2	FID	ACIS-I-6	7.25	4437	0.061	-0.008	0.009	0.015	0.000000	0.000000	399.86	1709.95
3	GUIDE	688522008	9.08	8871	-0.039	0.087	0.082	0.132	359.793079	-0.583482	963.26	-2366.74
4	GUIDE	688523168	9.81	8868	-0.013	-0.074	0.128	0.202	358.843792	-1.079337	222.80	1416.59
5	GUIDE	688526568	8.84	8869	-0.009	-0.201	0.066	0.108	359.115698	-0.932325	452.19	328.08
6	GUIDE	688526856	9.26	8865	0.095	0.121	0.102	0.166	359.962410	-1.196707	-1325.97	-2323.57
7	GUIDE	688521312	8.47	8870	-0.028	0.076	0.084	0.139	359.794684	-0.499831	1250.33	-2457.73

2.4 Star Slots

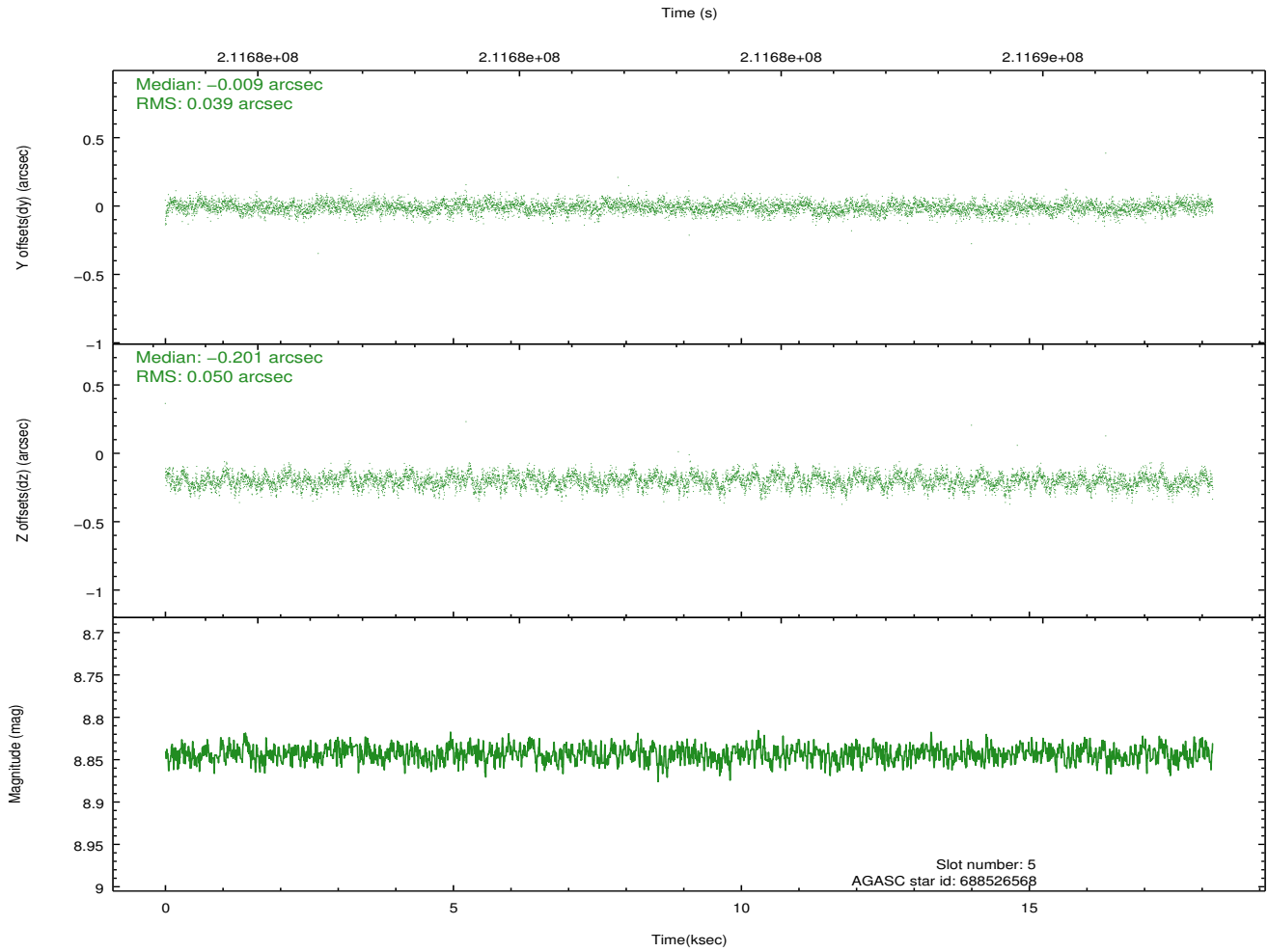
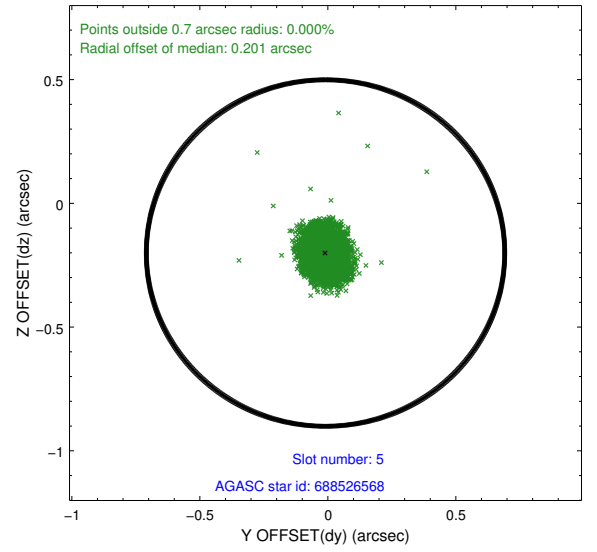
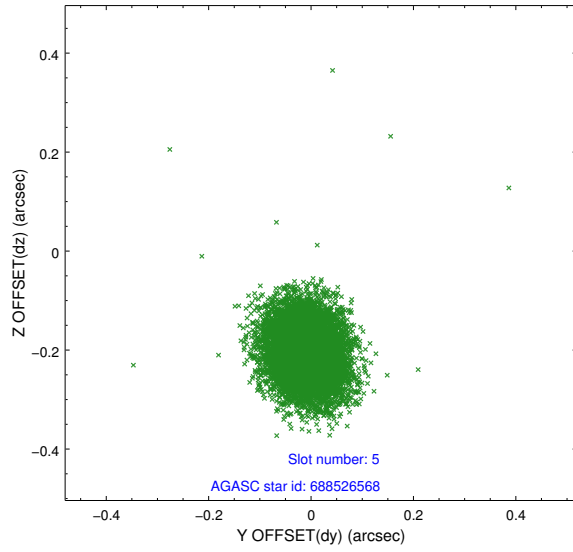
2.4.1 Slot 3



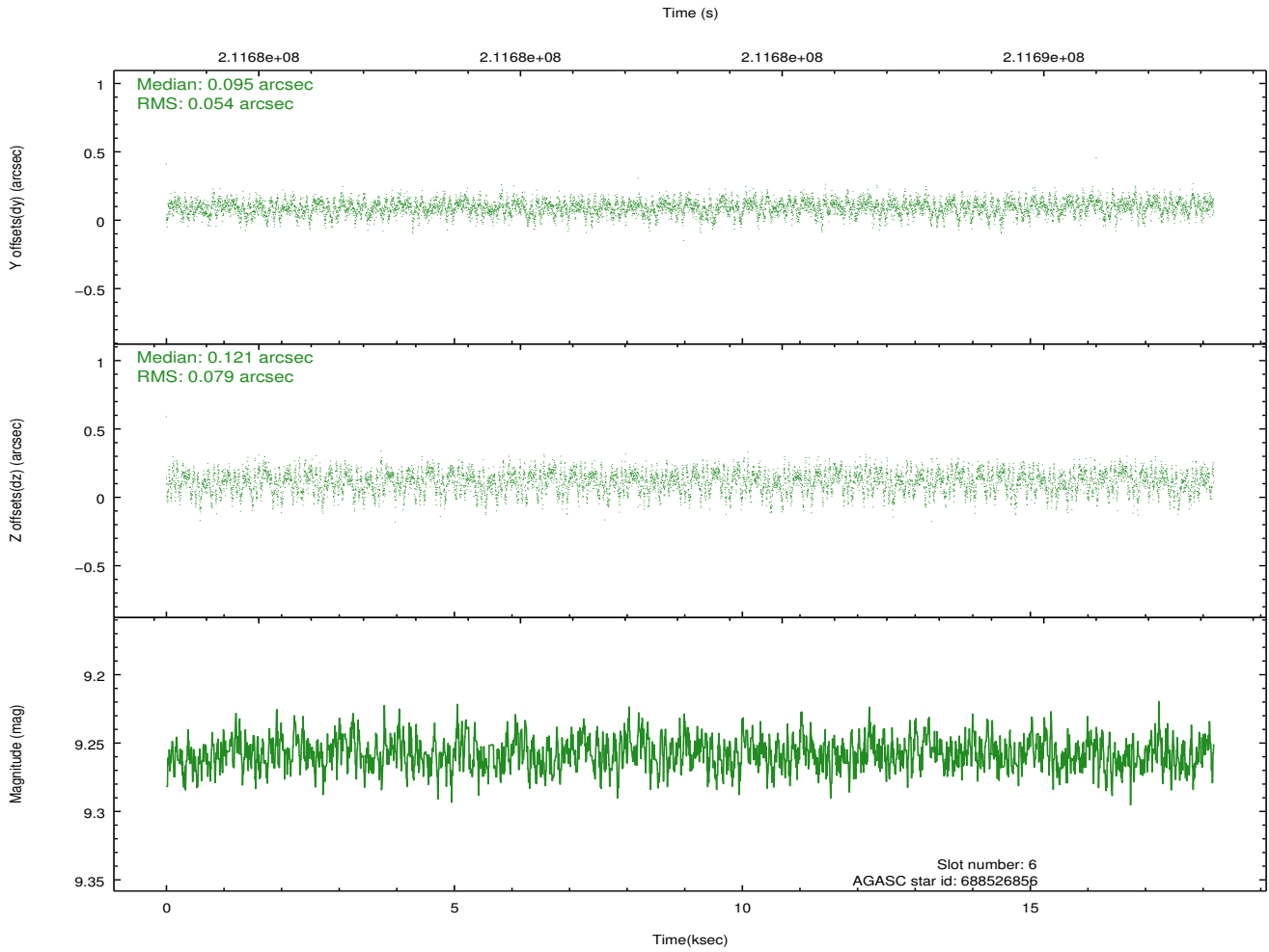
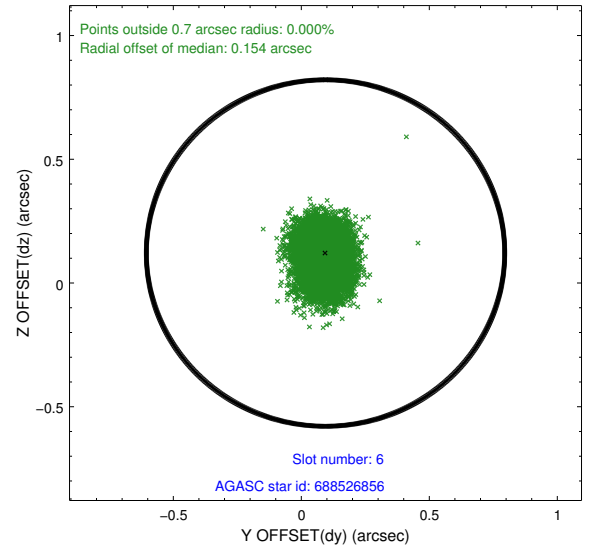
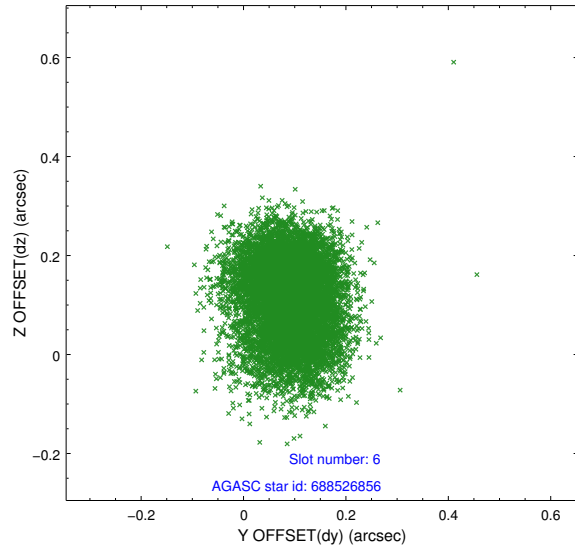
2.4.2 Slot 4



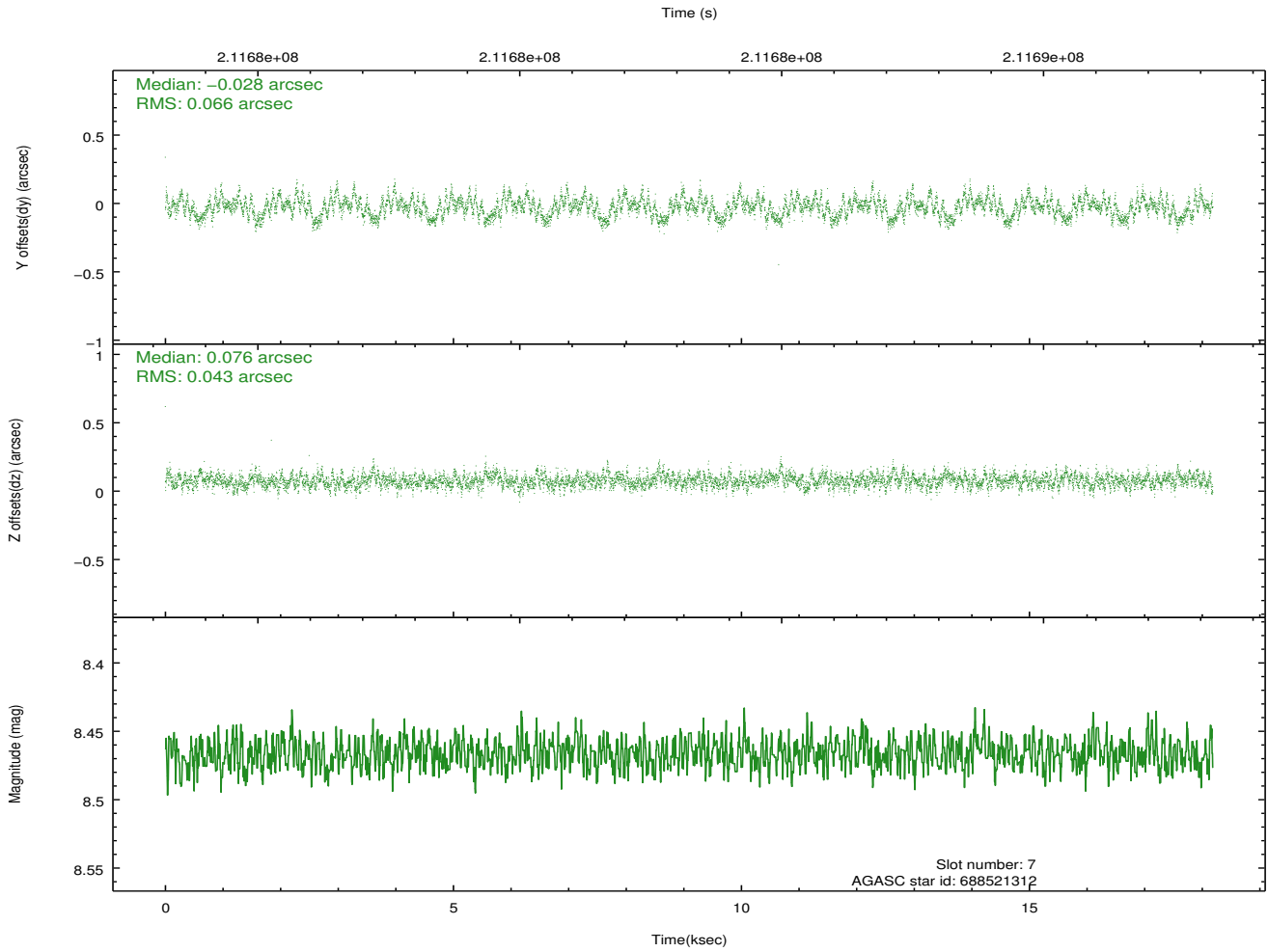
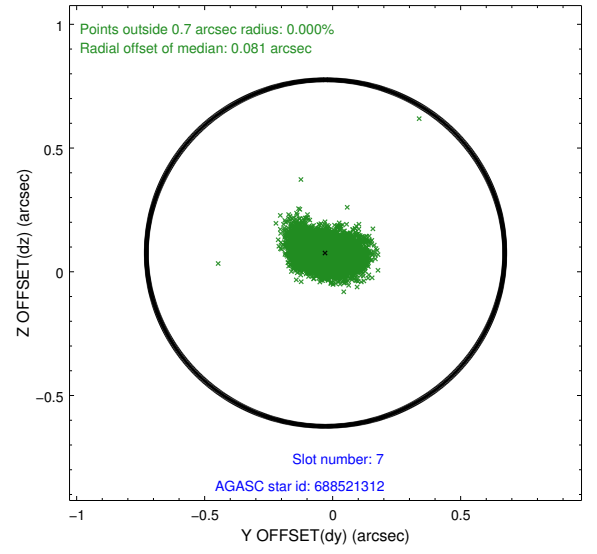
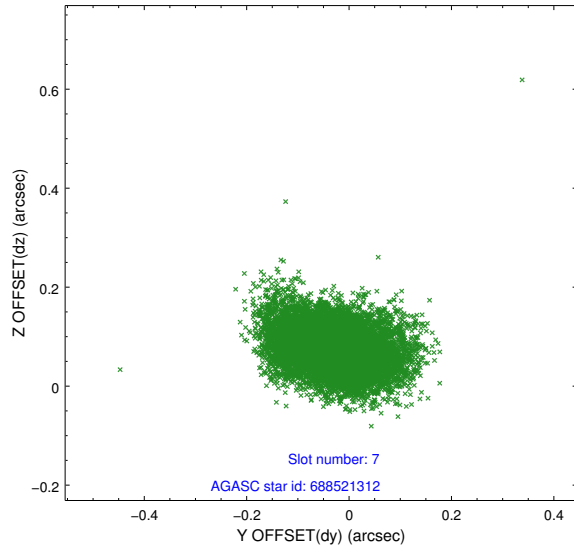
2.4.3 Slot 5



2.4.4 Slot 6

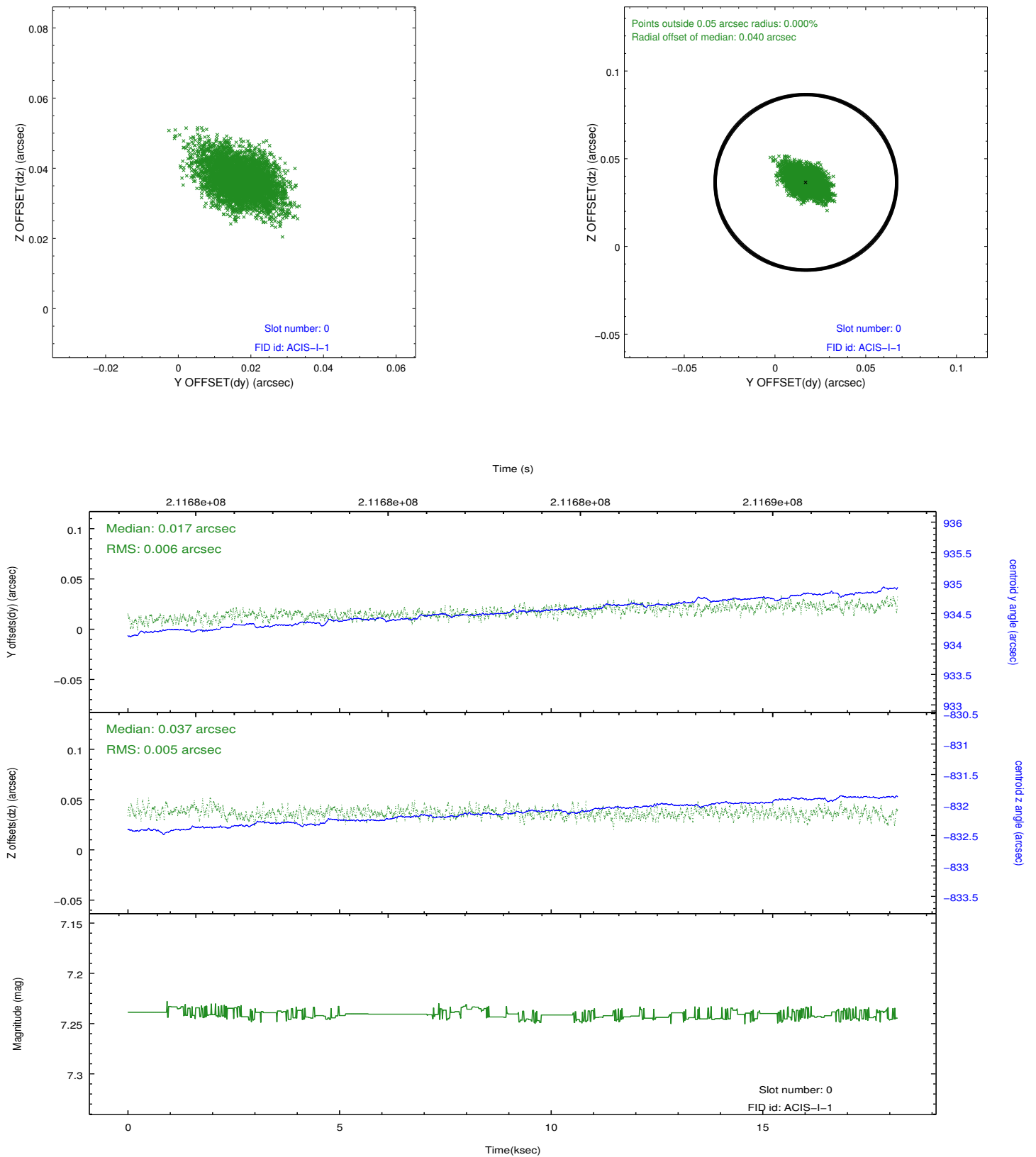


2.4.5 Slot 7

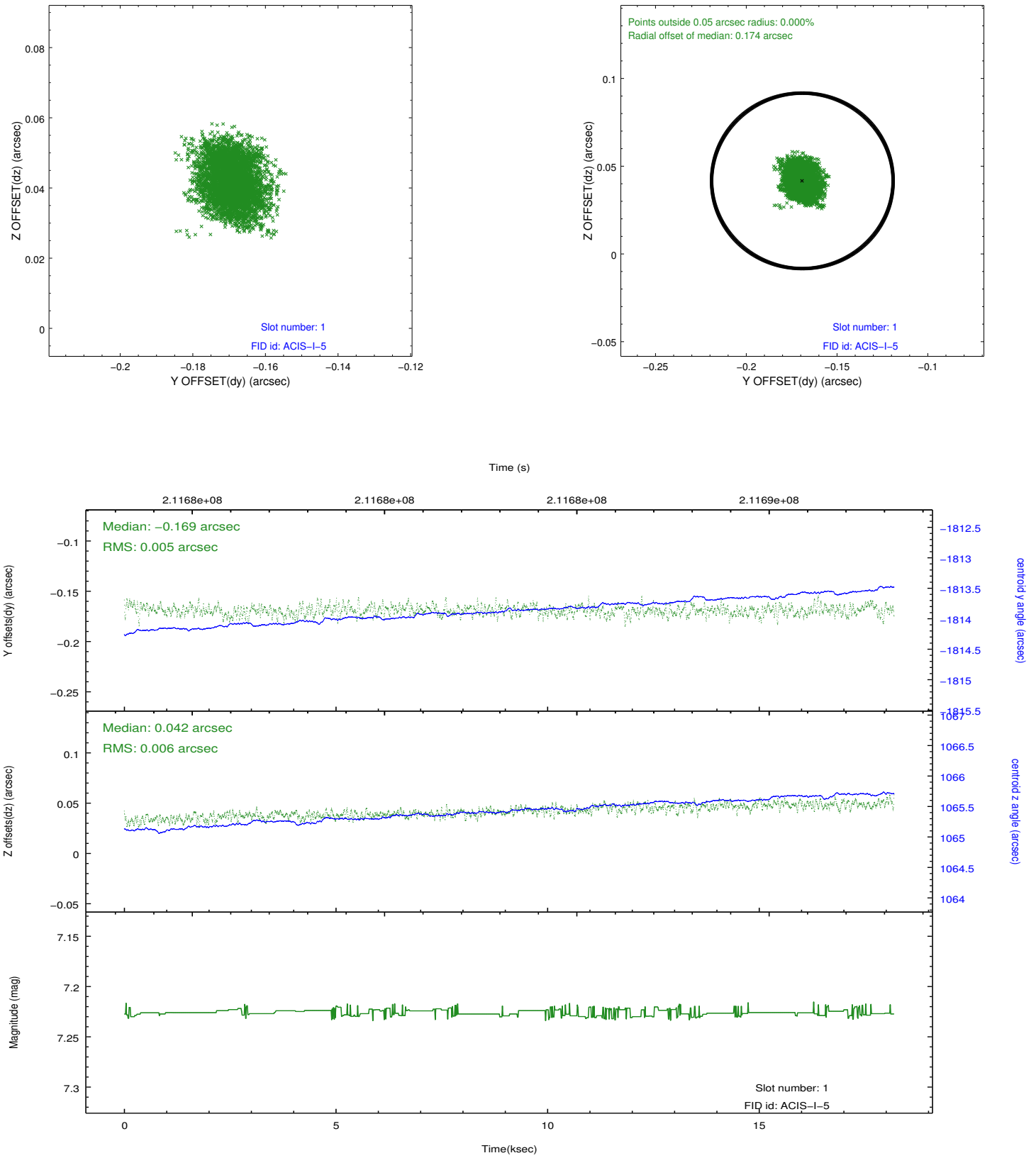


2.5 FID Slots

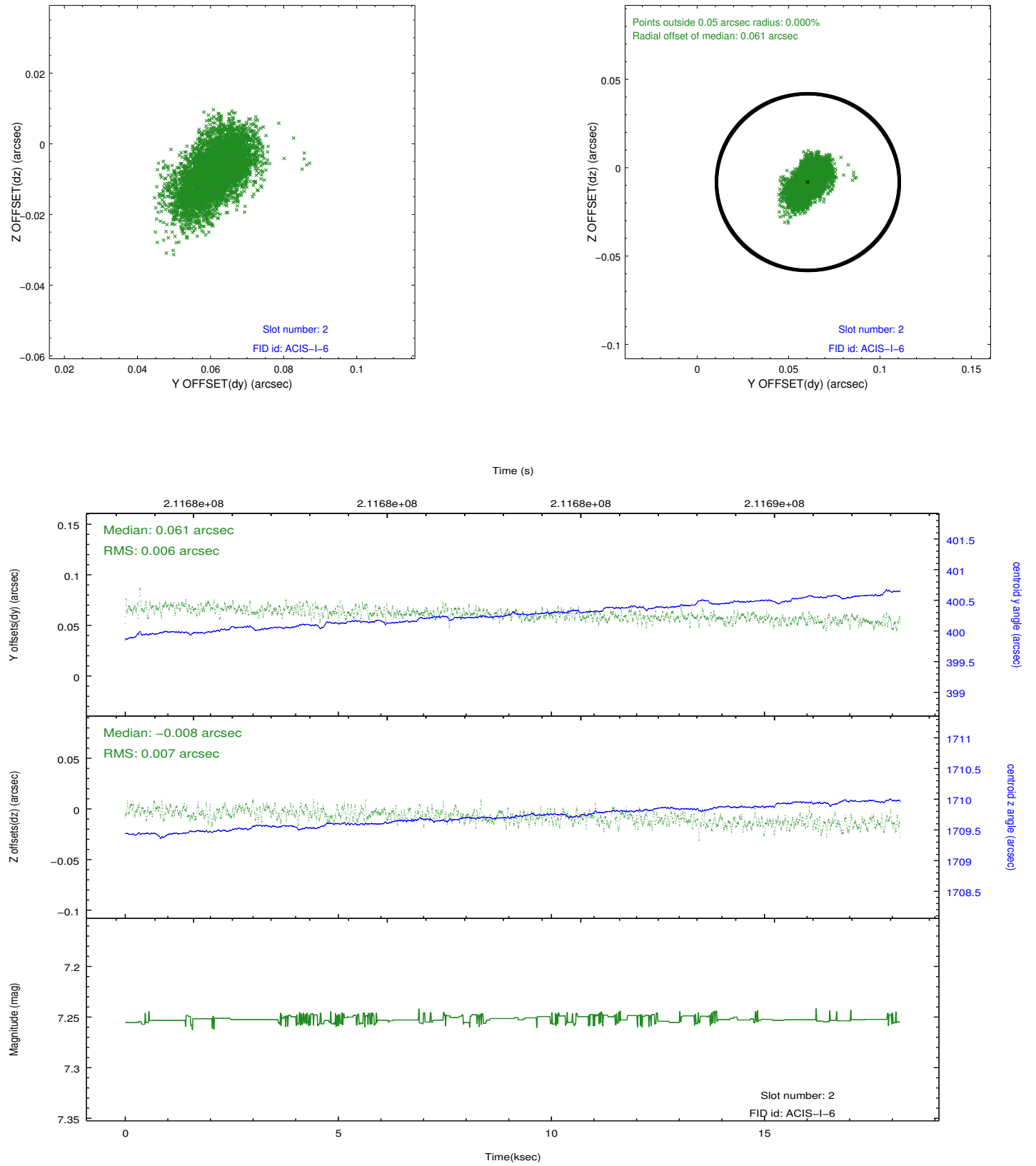
2.5.1 Slot 0



2.5.2 Slot 1



2.5.3 Slot 2



A Summary

A.1 Status

V&V Scientist	Beth Sundheim
V&V Date (YYYY-MM-DD)	2013.01.02
V&V Edition	1
V&V Disposition and Status	OK
V&V Charge Time	18.168

A.2 Comments