

V&V Reference Report

L2 ASCDS Version : 8.4.5

Observation 61168 - L2 Version 3
Chandra X-Ray Center

L2 Processing Date : Oct 9 2012

Contents

1	Front	2
2	OBI	3
2.1	OBI	3
2.1.1	Images	3
2.1.2	Bias	3
2.1.3	Parameters	4
2.1.4	Events	4
2.2	Compared Parameters	5
2.3	Star Slots	6
2.4	FID Slots	6
A	Summary	7
A.1	Status	7
A.2	Comments	7

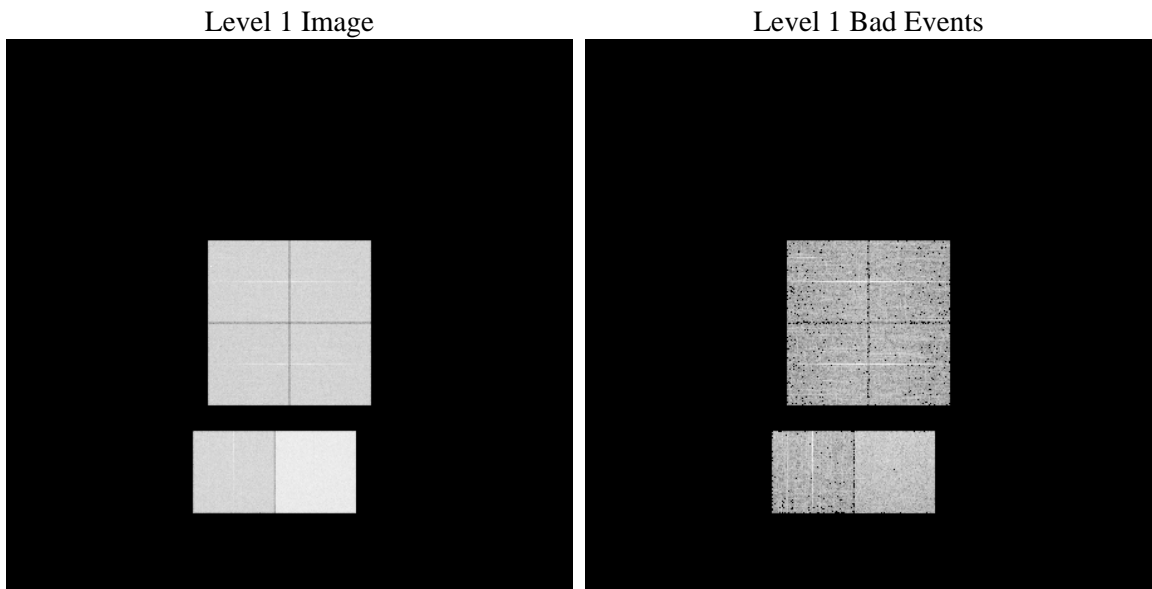
1 Front

seq_num	 	Sequence number
obs_id	61168	Observation id
title	ACIS-012367 diagnostics	Proposal title
observer	CHANDRA engineering request/realtime commanding	Principal investig
object	 	Source name
dtcycle	0	
cycle	P	events from which exps? Prim/Second/Both
ra_targ	0.0	Observer's specified target RA [deg]
dec_targ	0.0	Observer's specified target Dec [deg]
ra_nom	351.9758349539	Nominal RA [deg]
dec_nom	-11.483939758323	Nominal Dec [deg]
roll_nom	113.04484639328	Nominal Roll [deg]
revision	3	Processing version of data
ontime	7794.1866943538	Sum of GTIs [s]
livetime	7695.4920093341	Livetime [s]
ontime0	3499.8546537459	Sum of GTIs [s]
ontime1	3496.5717664659	Sum of GTIs [s]
ontime2	3224.8292117417	Sum of GTIs [s]
ontime3	3412.4291918576	Sum of GTIs [s]
ontime6	3661.7808922529	Sum of GTIs [s]
ontime7	7794.1866943538	Sum of GTIs [s]
l2events	1222877	Number of level 2 events

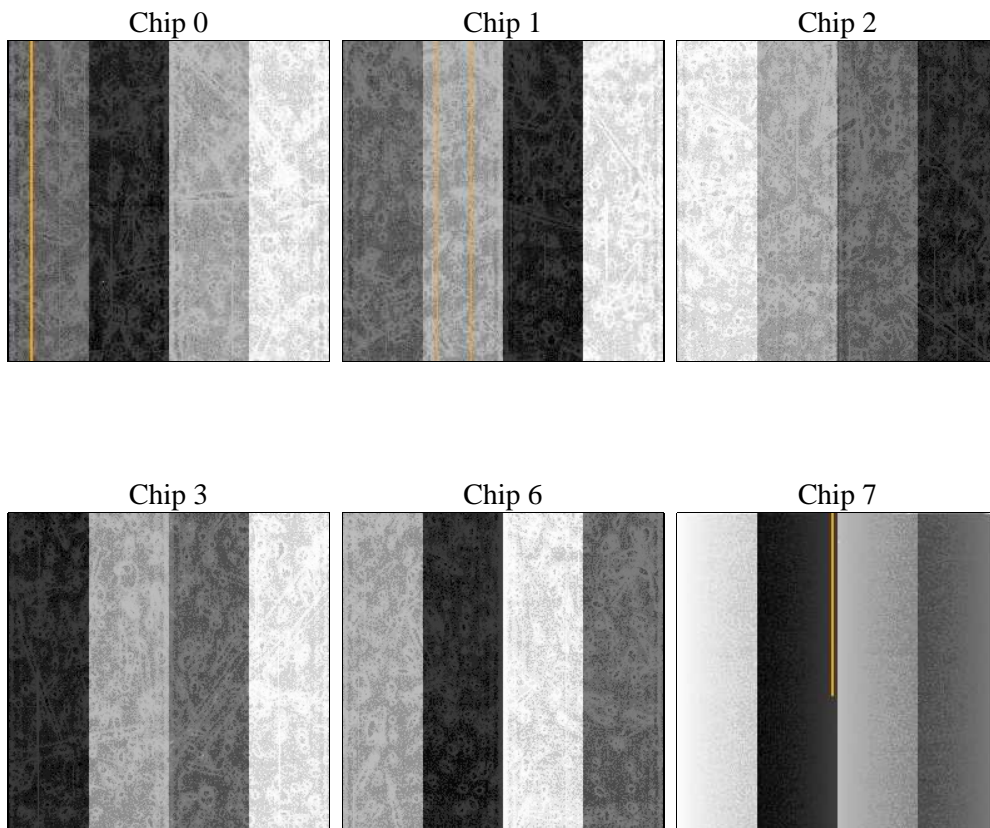
2 OBI

2.1 OBI

2.1.1 Images



2.1.2 Bias



2.1.3 Parameters

obi_num	0	Obi number	sched_exp_time	0.0	[s] Scheduled observation exposure time
ascdsver	8.4.5	Processing system revision	ontime	7794.1866943538	Sum of GTIs [s]
caldsver	4.5.2	 	ontime0	3499.8546537459	Sum of GTIs [s]
date	2012-10-09T06:31:10	Date and time of file creation	ontime1	3496.5717664659	Sum of GTIs [s]
revision	3	Processing version of data	ontime2	3224.8292117417	Sum of GTIs [s]
			ontime3	3412.4291918576	Sum of GTIs [s]
			ontime6	3661.7808922529	Sum of GTIs [s]
			ontime7	7794.1866943538	Sum of GTIs [s]
			l1events	1438839	Number of level 1 events

2.1.4 Events

	ccd 0	ccd 1	ccd 2	ccd 3	ccd 6	ccd 7		ccd 0	ccd 1	ccd 2	ccd 3	ccd 6	ccd 7
level 1 events	197717	197184	185611	195850	217514	444963	grade 0 events	95340	95657	89830	95665	104167	102924
rejected events	24073	23547	24026	24520	25993	40491		48%	48%	48%	48%	47%	23%
rejected %	12%	11%	12%	12%	11%	9%	grade 1 events	457	457	440	522	493	251
								0%	0%	0%	0%	0%	0%
							grade 2 events	30920	30857	28337	30068	33072	89456
								15%	15%	15%	15%	15%	20%
							grade 3 events	10921	11037	10177	10739	11745	41368
								5%	5%	5%	5%	5%	9%
							grade 4 events	10906	11033	10095	10951	11918	40663
								5%	5%	5%	5%	5%	9%
							grade 5 events	1631	1687	1517	1764	1932	8190
								0%	0%	0%	0%	0%	1%
							grade 6 events	25557	25053	23146	23907	30619	130061
								12%	12%	12%	12%	14%	29%
							grade 7 events	21985	21403	22069	22234	23568	32050
								11%	10%	11%	11%	10%	7%

2.2 Compared Parameters

Parameter	Planned	Actual	Parameter	Planned	Actual
Instrument	ACIS	ACIS	Obspar format version number	7	7
Detector	ACIS-012367	ACIS-012367	Obspar file type	PREDICTED	ACTUAL
Grating	NONE	NONE	Obspar update status	NONE	UPDATED
Data mode	FAINT	FAINT	On-chip summing requested	N	N
Observation mode	SECONDARY	SECONDARY	Subarray requested	NONE	NONE
[deg] Pointing RA	0	351.9758349539039	Alternating exposures requested	N	N
[deg] Pointing Dec	0	-11.48393975832323	[s] Primary exposure time	0.000000	3.2
[deg] Pointing Roll	0.0	113.0448463932826			
[mm] SIM focus pos	-0.782348	-0.6828225247311905			
[mm] SIM defocus	0	0.8505141146731063			
[mm] SIM translation stage pos	-233.592463	250.466033080201			
[mm] SIM translation stage offset	0	-0.01005468664627074			
[s] Observation start time (MET)	140266215.668	140266214.64334			
Observation start date	2002-06-12T10:50:16	2002-06-12T10:50:14			
[s] Observation end time (MET)	140278093.369	140278092.34382			
Observation end date	2002-06-12T14:08:13	2002-06-12T14:08:12			
Read mode	TIMED	TIMED			

2.3 Star Slots

2.4 FID Slots

A Summary

A.1 Status

V&V Scientist	Beth Sundheim
V&V Date (YYYY-MM-DD)	2012.10.18
V&V Edition	1
V&V Disposition and Status	OK
V&V Charge Time	7.7941866943538

A.2 Comments