

V&V Reference Report

L2 ASCDS Version : 7.6.9

Observation 61108 - L2 Version 001
Chandra X-Ray Center

L2 Processing Date : Sep 26 2006

Contents

1	Front	2
2	OBI	3
2.1	OBI	3
2.1.1	Images	3
2.1.2	Bias	3
2.1.3	Parameters	4
2.1.4	Events	4
2.2	Compared Parameters	5
2.3	Aspect	6
2.4	Star Slots	8
2.5	FID Slots	8
A	Summary	9
A.1	Status	9
A.2	Comments	9

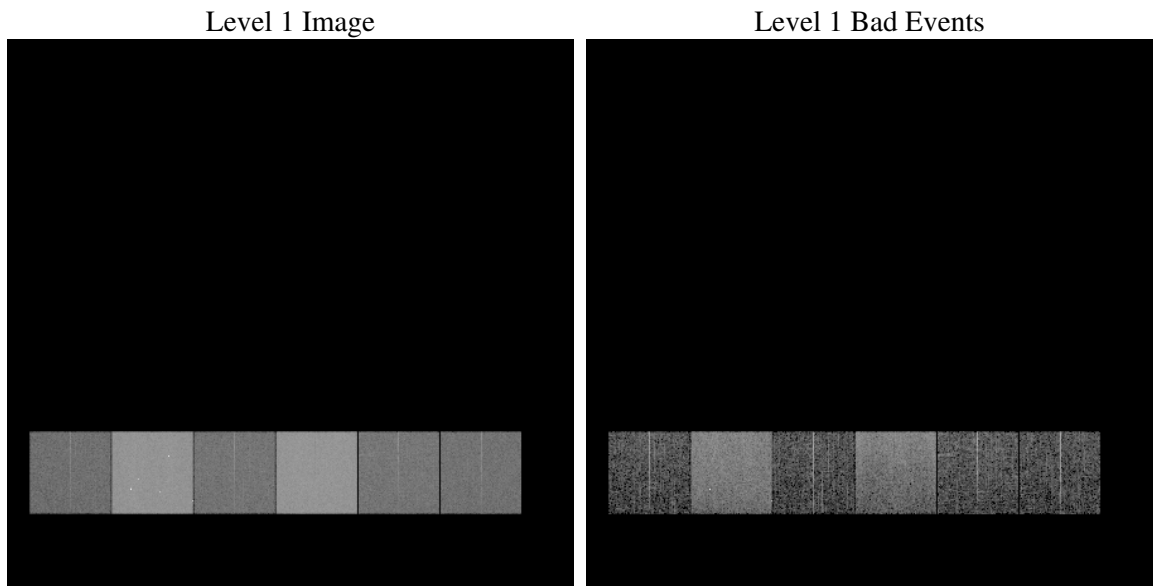
1 Front

seq_num	
obs_id	61108
title	ACIS-456789 diagnostics
observer	CHANDRA engineering request/realtime commanding
object	
dtcycle	0
cycle	P
ra_targ	0.0
dec_targ	0.0
ra_nom	293.03874384043
dec_nom	-42.996066442361
roll_nom	335.08582183489
revision	2
ontime	7293.2272601426
livetime	7200.8760251204
ontime4	2613.3640561104
ontime5	7789.1359826326
ontime6	2895.2929774225
ontime7	7293.2272601426
ontime8	2933.7670068443
ontime9	2784.974607259
l2events	1190680

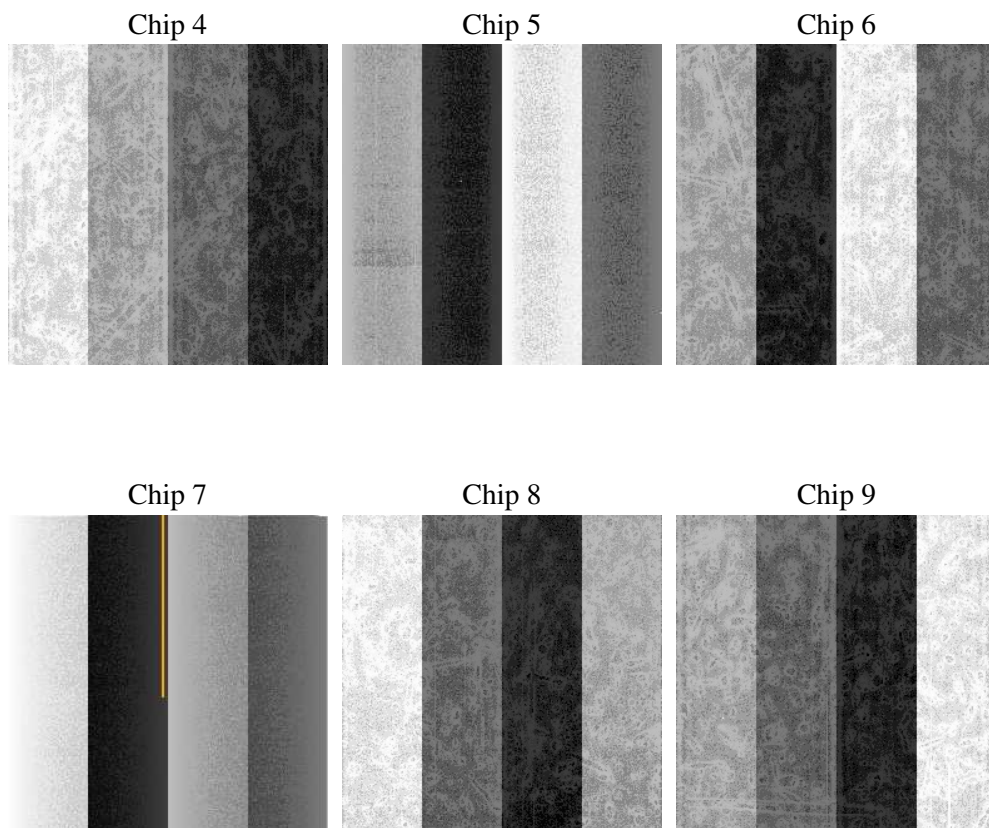
2 OBI

2.1 OBI

2.1.1 Images



2.1.2 Bias



2.1.3 Parameters

obi_num	0
ascdsver	7.6.9
caldsver	3.2.3
date	2006-09-26T21:07:47
revision	2

sched_exp_time	0.0
ontime	7295.5027376711
ontime4	2615.5164136291
ontime5	7791.3704201579
ontime6	2897.4863749444
ontime7	7295.5027376711
ontime8	2936.3784461915
ontime9	2787.2911247909
l1events	1441332

2.1.4 Events

	ccd 4	ccd 5	ccd 6	ccd 7	ccd 8	ccd 9
level 1 events	143414	396788	166951	406395	172028	155756
rejected events	21037	61000	21055	50015	23604	20250
rejected %	14%	15%	12%	12%	13%	13%

	ccd 4	ccd 5	ccd 6	ccd 7	ccd 8	ccd 9
grade 0 events	68790	43276	79865	67226	81281	74275
	47%	10%	47%	16%	47%	47%
grade 1 events	378	180	400	199	368	362
	0%	0%	0%	0%	0%	0%
grade 2 events	21707	159741	25395	105933	26403	24047
	15%	40%	15%	26%	15%	15%
grade 3 events	7501	11664	9253	27063	9509	8397
	5%	2%	5%	6%	5%	5%
grade 4 events	7665	11576	8829	26877	9418	8388
	5%	2%	5%	6%	5%	5%
grade 5 events	1243	7165	1502	6611	1666	1535
	0%	1%	0%	1%	0%	0%
grade 6 events	16880	109668	22706	129457	21979	20554
	11%	27%	13%	31%	12%	13%
grade 7 events	19250	53518	19001	43029	21404	18198
	13%	13%	11%	10%	12%	11%

2.2 Compared Parameters

Parameter	Planned	Actual	Parameter	Planned	Actual
Instrument	ACIS	ACIS	Obspar format version number	6	6
Detector	ACIS-456789	ACIS-456789	Obspar file type	PREDICTED	ACTUAL
Grating	NONE	NONE	Obspar update status	NONE	UPDATED
Data mode	FAINT	FAINT	On-chip summing requested	N	N
Observation mode	SECONDARY	SECONDARY	Subarray requested	NONE	NONE
Pointing RA	0	293.0387438404284	Alternating exposures requested	N	N
Pointing Dec	0	-42.99606644236063	Primary exposure time	0.000000	3.2
Pointing Roll	0.0	335.08582183489			
SIM focus pos (mm)	-0.684267	-0.7809083437167272			
SIM defocus (mm)	0	0.7524282956875696			
SIM translation stage pos (mm)	-190.132523	250.466033080201			
SIM translation stage offset (mm)	0	-0.01005468664627074			
Observation start time	143925594.968	143925593.94342			
Observation start date	2002-07-24T19:19:55	2002-07-24T19:19:53			
Observation end time	143960824.22	143960823.19487			
Observation end date	2002-07-25T05:07:04	2002-07-25T05:07:03			
Read mode	TIMED	TIMED			

2.3 Aspect

2.4 Star Slots

2.5 FID Slots

A Summary

A.1 Status

V&V Scientist	Jen Lauer
V&V Date (YYYY-MM-DD)	2006.09.27
V&V Edition	1
V&V Disposition and Status	OK
V&V Charge Time	7.29322726

A.2 Comments