

V&V Reference Report

L2 ASCDS Version : 7.6.8

Observation 60798 - L2 Version 001
Chandra X-Ray Center

L2 Processing Date : Jul 30 2006

Contents

1	Front	2
2	OBI	3
2.1	OBI	3
2.1.1	Images	3
2.1.2	Bias	3
2.1.3	Parameters	4
2.1.4	Events	4
2.2	Compared Parameters	5
2.3	Aspect	6
2.4	Star Slots	8
2.5	FID Slots	8
A	Summary	9
A.1	Status	9
A.2	Comments	9

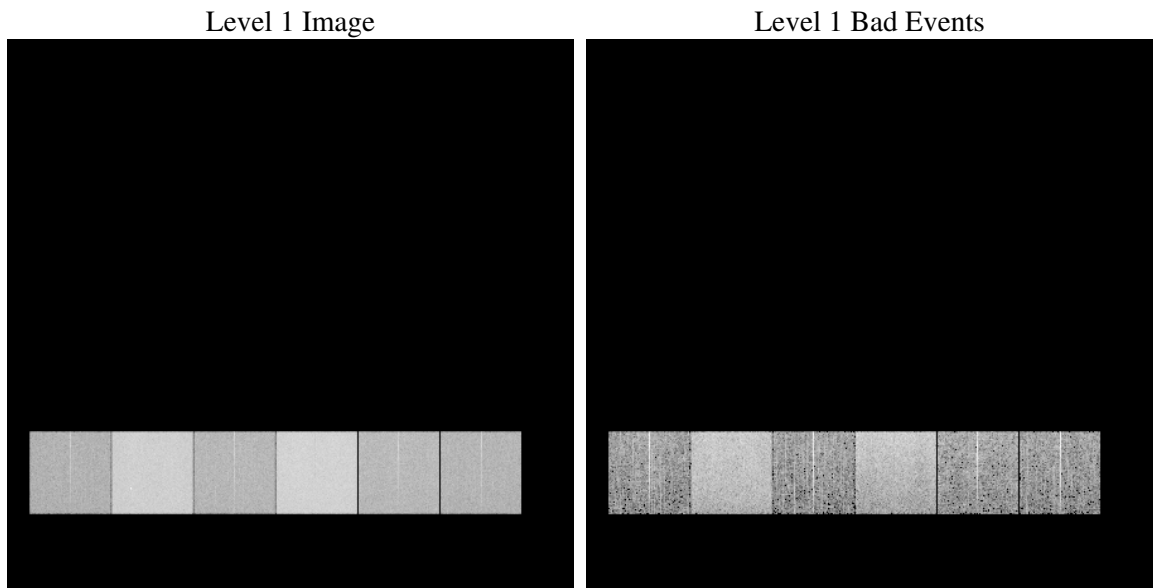
1 Front

seq_num	
obs_id	60798
title	ACIS-456789 diagnostics
observer	CHANDRA engineering request/realtime commanding
object	
dtcycle	0
cycle	P
ra_targ	0.0
dec_targ	0.0
ra_nom	189.57098689477
dec_nom	28.687009906955
roll_nom	174.18009095039
revision	2
ontime	8463.9999684691
livetime	8356.8237044595
ontime4	3661.0589175224
ontime5	8463.9999684691
ontime6	3985.1195954978
ontime7	8463.9999684691
ontime8	4160.2157832384
ontime9	3868.3198228776
l2events	1246547

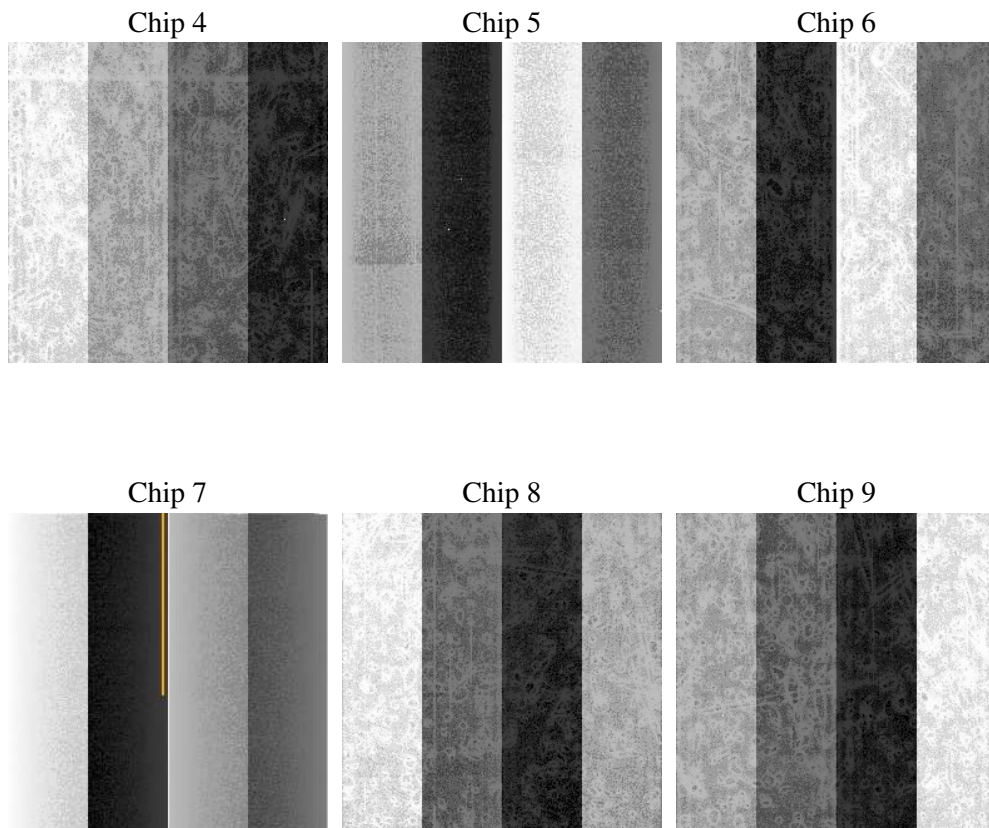
2 OBI

2.1 OBI

2.1.1 Images



2.1.2 Bias



2.1.3 Parameters

obi_num	0
ascdsver	7.6.8
caldsver	3.2.2
date	2006-07-30T10:50:52
revision	2

sched_exp_time	0.0
ontime	8465.5043866932
ontime4	3662.3673925698
ontime5	8465.5043866932
ontime6	3986.4691105485
ontime7	8465.5043866932
ontime8	4161.4832183123
ontime9	3869.7924579382
l1events	1541450

2.1.4 Events

	ccd 4	ccd 5	ccd 6	ccd 7	ccd 8	ccd 9
level 1 events	172594	371539	197602	405534	209158	185023
rejected events	28636	64922	28109	57229	30714	27236
rejected %	16%	17%	14%	14%	14%	14%

	ccd 4	ccd 5	ccd 6	ccd 7	ccd 8	ccd 9
grade 0 events	83632	33528	92689	61819	98547	87560
	48%	9%	46%	15%	47%	47%
grade 1 events	591	102	450	159	475	475
	0%	0%	0%	0%	0%	0%
grade 2 events	22857	148190	29198	106216	30981	26950
	13%	39%	14%	26%	14%	14%
grade 3 events	9582	9756	10307	25763	11369	9884
	5%	2%	5%	6%	5%	5%
grade 4 events	9594	9382	10442	25119	11447	10012
	5%	2%	5%	6%	5%	5%
grade 5 events	1699	6865	2005	7513	2282	2013
	0%	1%	1%	1%	1%	1%
grade 6 events	18293	105761	26857	129388	26100	23381
	10%	28%	13%	31%	12%	12%
grade 7 events	26346	57955	25654	49557	27957	24748
	15%	15%	12%	12%	13%	13%

2.2 Compared Parameters

Parameter	Planned	Actual	Parameter	Planned	Actual
Instrument	ACIS	ACIS	Obspar format version number	6	6
Detector	ACIS-456789	ACIS-456789	Obspar file type	PREDICTED	ACTUAL
Grating	NONE	NONE	Obspar update status	NONE	UPDATED
Data mode	FAINT	FAINT	On-chip summing requested	N	N
Observation mode	SECONDARY	SECONDARY	Subarray requested	NONE	NONE
Pointing RA	0	189.5709868947664	Alternating exposures requested	N	N
Pointing Dec	0	28.68700990695523	Primary exposure time	0.000000	3.2
Pointing Roll	0.0	174.1800909503912			
SIM focus pos (mm)	-0.684267	-0.7809083437167272			
SIM defocus (mm)	0	0.7524282956875696			
SIM translation stage pos (mm)	-190.132523	250.466033080201			
SIM translation stage offset (mm)	0	-0.01005468664627074			
Observation start time	165213882.354689	165213881.32999			
Observation start date	2003-03-28T04:44:42	2003-03-28T04:44:41			
Observation end time	165227152.005248	165227150.98055			
Observation end date	2003-03-28T08:25:52	2003-03-28T08:25:50			
Read mode	TIMED	TIMED			

2.3 Aspect

2.4 Star Slots

2.5 FID Slots

A Summary

A.1 Status

V&V Scientist	Jen Lauer
V&V Date (YYYY-MM-DD)	2006.07.30
V&V Edition	1
V&V Disposition and Status	OK
V&V Charge Time	8.46399996

A.2 Comments

The ACIS focal plane temperature was above calibration limits for the first 4 ksec of the observation.